

touch technology


Software & Networking



Table of Contents

Process Planning	4
Product Matrix	4
S.WOP	5
Easy PS	8
Shopfloor	10
Cayman	10
Iguana	12
WinCrimp	13
Machine Software	14
Easy - Cut Strip Terminate	14
S.On - Cut & Strip	16
Semi-Automatic	18





The modular software solution from Schleuniger maximizes machine efficiency and capacity utilization. The software transfers order data to wire processing machines. Our latest software S.WOP generates better process flows and eliminates administration tasks in production. The central database management system also optimizes material and machine usage and creates transparent results.

Product Matrix

Process Planning	Shopfloor	Machine Software	Machines
S.WOP		Easy	CrimpCenter 36 S CrimpCenter 64 CrimpCenter 67 CrimpCenter 67 HD 16
	Cayman	S.On	PowerStrip 9550 MegaStrip 9650
			CompactStrip 9200 PowerStrip 9500 OmniStrip 9450
		Semi-Automatic	UniStrip 2300 UniStrip 2550 JacketStrip 8310 CoaxStrip 5200 RotaryStrip2400
	Iguana		EcoCut 3200 EcoCut 3300 PowerCut 3700 UniStrip 2600 CoaxStrip 5300 CoaxStrip 5300 RX CoaxStrip 5400 CoaxStrip 5500
	WinCrimp		Pull Force Testing Crimp Height Measurement Crimp Force Monitoring

System Requirements

Software from Schleuniger can be easily integrated into the existing IT environment. The requirements are in line with normal industrial standards. The technical basis is Windows 7 or higher and a TCP/IP network.

S.WOP

S.software for Wire Optimized Production

The software solution S.WOP takes over the planning and monitoring of all wire processing machines. S.WOP extracts data from the order management system (e.g. ERP) and compiles consistent orders. These are grouped according to the best workflow principle and assigned to individual machines. In particular this enables clients with various order volumes and small batch sizes to produce more efficiently and to have access to relevant production- and machine data.

Your benefits

Administration work and intermediate storage are reduced by S.WOP. Even surpluses are eliminated due to demand-driven manufacturing. Raw material and machine capacities are used to their optimum capacities. Bar code scanning has consigned set-up errors to history. By process control users are encouraged to capture measurement values according to specified rules and to adhere to tolerances. Tooling maintenance thresholds are also monitored.

S.WOP

S.software for Wire Optimized Production

Your Benefits

- Process transparency
- Low paper production
- Production monitoring
- Reduced lead times
- Increased productivity



Raw material and machine capacities are fully utilized

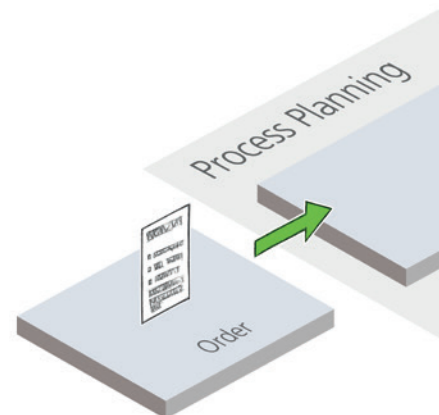
The technical options are specified in detail in the machine administration and this is used to check whether the machine is appropriate for an order. Not only new orders are taken into consideration but also those which have already been assigned to a machine. If faults arise orders are reassigned. The system recognizes downtime through the machine administration. These orders are then assigned to other machines in the next optimization process.

Achieving the objective with less effort

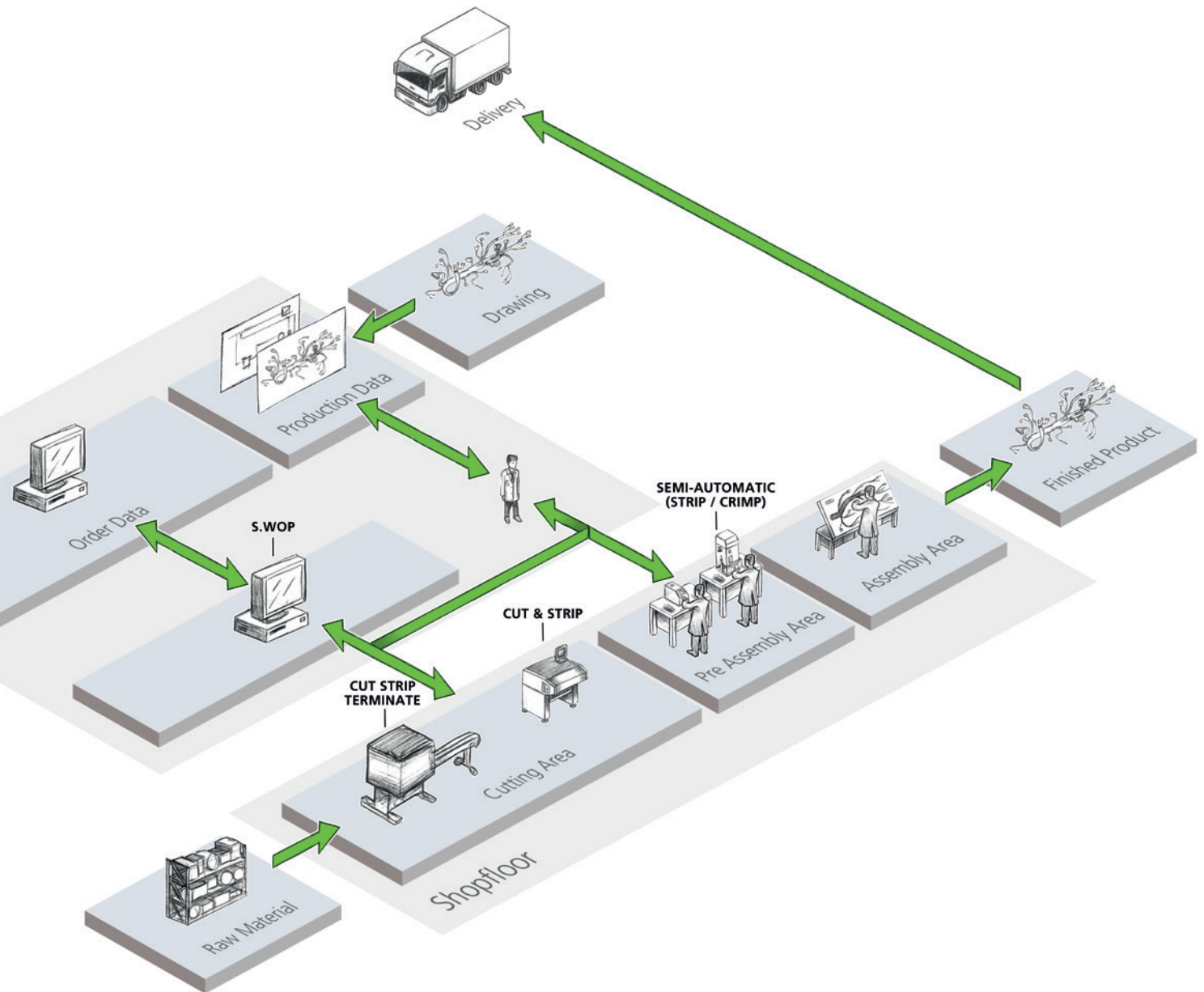
Kanban enables demand-driven manufacturing. This means that stocks of semi-finished goods are reduced thereby ensuring required stocks are available at the right time. Kanban orders are generated automatically by the system when booking parts out of stock. The number of these orders is determined automatically from the current inventory stock, the weekly requirement and the security stock.

Transparent Production

The set-up parameters for all operating equipment are specified in the machine administration for each machine connected to S.WOP. A Gantt Diagram visualizes the result and graphically displays the spread and sequencing of orders with their duration via a timeline. The tooling administration logs all tooling movements in a long-term archive and enhances the data with information on equipment use and its wear and tear. S.WOP records the production process together with the serial and batch numbers of the materials deployed together with inventory numbers of tools used. Quality assurance measures are directly integrated into the process.



Connecting Value Chains

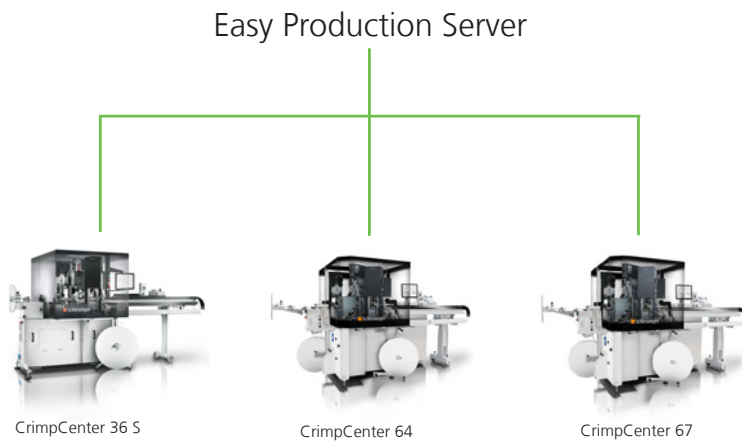


Easy Production Server (Easy PS)

Production Management Software

Easy Production Server (Easy PS)

With the Easy PS Server Software wire processing can be optimized on an unlimited number of networked CrimpCenters. Production planning, Managing of production orders and real-time production monitoring can be effected from one central computer workstation.



Your Benefits

- Automatic optimization of order sequencing and their assignment
- Integration into existing company networks through the standard TCP/IP Protocol
- Flexible data import of order and item data in XML format
- Customer-specific capture and logging of production data

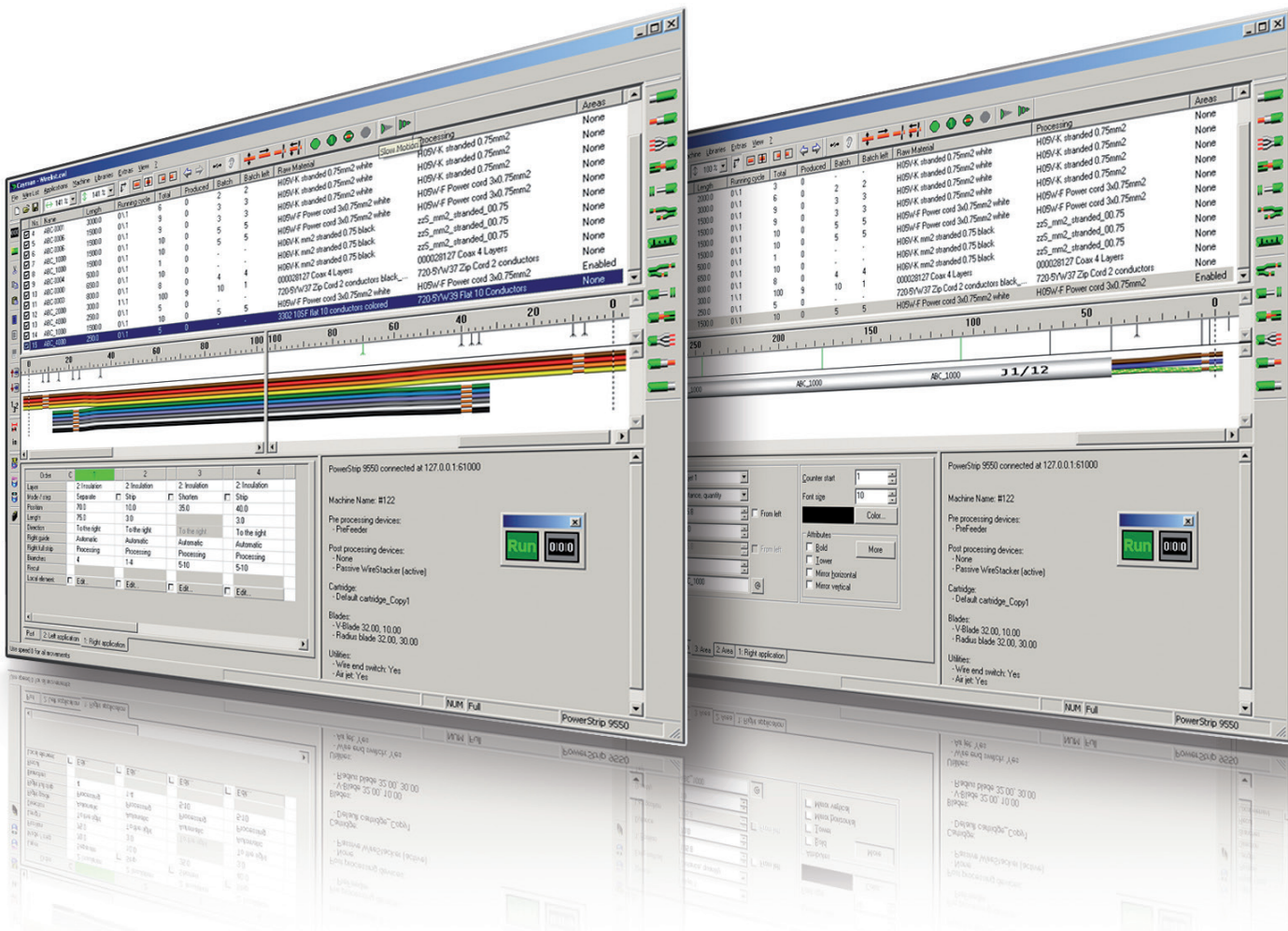


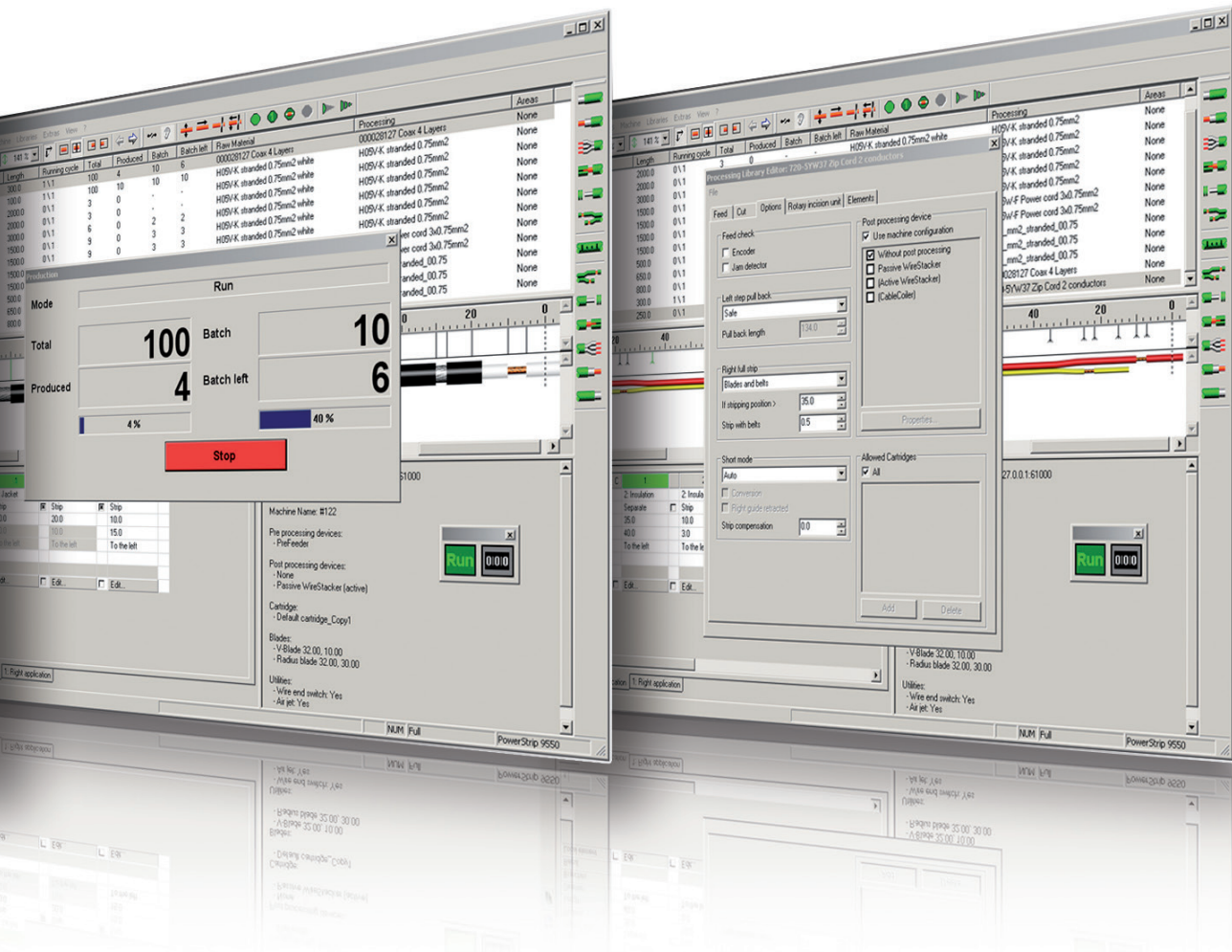
Process Planning

Cayman

Wire Processing Software

Cayman is the software solution for automatic cut & strip machines. The software enables simple programming and the processing control of wires and wire sets on the PC. The user-friendly software provides exemplary functionality, production flexibility and expandability through open interfaces. Furthermore, offline programming eliminates unnecessary idle times caused by programming on the machine.





Your Benefits

- User-friendly through visual control options
- Optimum programming of production processes
- Libraries for the reusability of raw material data
- Open interface for data import
- Efficient programming through predefined wire ends

Iguana

Wire Processing Software

Iguana is the PC software for offline programming and administration of wire data for semi-automatic machines. Offline programming eliminates unnecessary idle times caused by programming on the machine. Therefore, the machine productivity increases. In addition Iguana expands capacity for storing wire data.

Your Benefits

- Understandable symbols
- Programming on a PC or on the machine
- Graphical display shows wires and lists
- Easy data transfer
- Machine data backup and restore



WinCrimp

Quality Assurance Software

WinCrimp is the software which quickly and comprehensively captures pull-off and crimp force data. Therefore WinCrimp contributes considerably to quality traceability. The additional „Statistics“ version uses SPC analyses to graphically process and print the captured results. This ensures maintaining a predefined level of quality.

Your Benefits

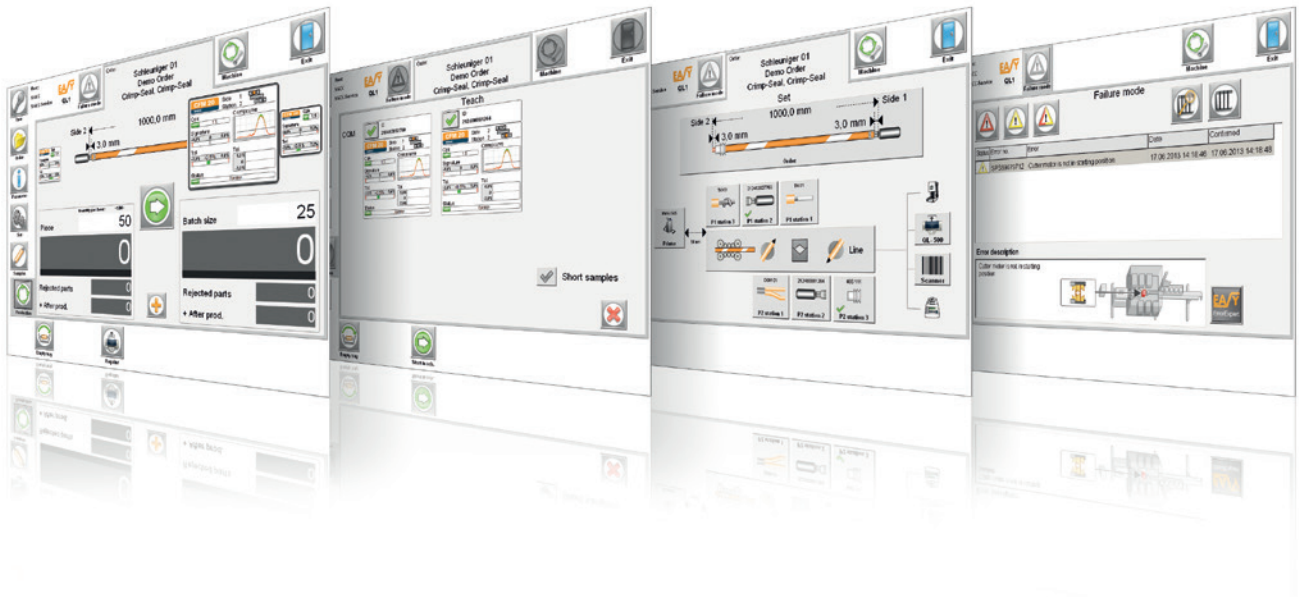
- Precise capture of crimp quality measurement data
- Transfer of crimp force data
- Crimp quality network
- Easy handling of order files



Easy - Cut Strip Terminate

Easy, a user-friendly software interface, sets new standards for the entire industry offering a very simple, welcoming interface. Touchscreen operation with intuitive icon-based navigation and logical menu structures reduce setup time and training time. The standard TCP/IP protocol allows a fast and simple integration into networks.





Your Benefits

- Touchscreen interface
- Intuitive and language independent icons
- Networking via standard TCP/IP protocol
- Online documentation
- System diagnostics and Easy ErrorExpert

S.On - Cut & Strip

S.On is the machine control software for cut & strip machines. Driven by an intuitive touchscreen the software addresses a broad spectrum of different applications. S.On also impresses by its convenient programming independent of the operators knowledge and its outstanding efficiency leading to optimized productivity.





Your Benefits

- Libraries for raw material data
- Default values for wire programming
- User-friendly operation
- Supporting graphics
- Predefined wire end processing

Semi-Automatic

The Software for semi-automatic machines impresses due to its short training period. The touchscreen interface covers a comprehensive functionality which enables efficient and accurate operation to achieve a maximum of productivity.





Your Benefits

- Default values for common wires
- Enhanced mode for advanced applications
- User-friendly operation
- Supporting graphics for convenient programming



To Be Precise.