



# Soil Erosion Control Update

Florida Stormwater, Erosion, and Sedimentation Control  
Inspector (FSESCI) Training and Qualification Certificate  
Program

Halton Lunsford, Statewide Training Coordinator

Sara Davis, Environmental Manager

December 2018



# FSESCI Training Program Information

*Program Goals*

*Program Objectives*

*Program Updates*



# FSESCI Program Goals

- Educate installers and inspectors
- Best Management Practice (BMP) selection, installation, layering, and maintenance
- Train and qualify inspectors
- Inspect BMPs for use during and after construction
- Minimize impacts from uncontrolled erosion and sedimentation on the construction site





# Program Objectives

- Ensure that the desired benefits of stormwater management systems are being achieved
- To ensure that both the public and private sectors have enough inspectors trained in the proper installation and maintenance of BMPs during and after construction
- To ensure a consistent level of technical expertise and professional conduct for all individuals responsible for inspecting erosion and sediment controls, and stormwater management systems



# Program Updates

## • Revised Manual & Class Materials

- Revised Two-Tiered Manual
- Workbook
- Class Syllabus
- PowerPoints (pdf)
- Exams



## • Instructing a Class - Procedural Changes

- Teaching the Two Tiers
- Scheduling/Flyer
- Registration/Attendee Information
- Sign-In Sheet
- Grading
- Certificate Processing



## • Communication

- New email address
- New GovDelivery Notifications
- New ftp sites





# Revised Manuals and Curriculum

*Revised, Two-Tiered Manual*  
*Class Workbook and Syllabus*  
*Class Presentations*  
*Class Exams*



# Revised Manuals

- TIER I
  - Qualified BMP Installer (QBI)
  - Chapters 1 through 5
  - Basic Dewatering
- TIER II
  - Qualified Compliance Inspector (QCI)
  - Chapters 6 through 9



## *Florida Stormwater Erosion and Sedimentation Control Inspectors Manual*

Florida Department of Environmental Protection

July 2018

2600 Blair Stone Road  
Tallahassee, FL 32399  
[www.floridadep.gov](http://www.floridadep.gov)





# Tier I Manual

## *Qualified BMP Installer (QBI)*

Chapter 1 - Erosion and Sediment Control

Chapter 2 - Soils

Chapter 3 - BMPs for Erosion and Sediment Control

Chapter 4 - Vegetative BMPs for Erosion and Sediment Control

Chapter 5 - Dewatering





# Tier I Manual

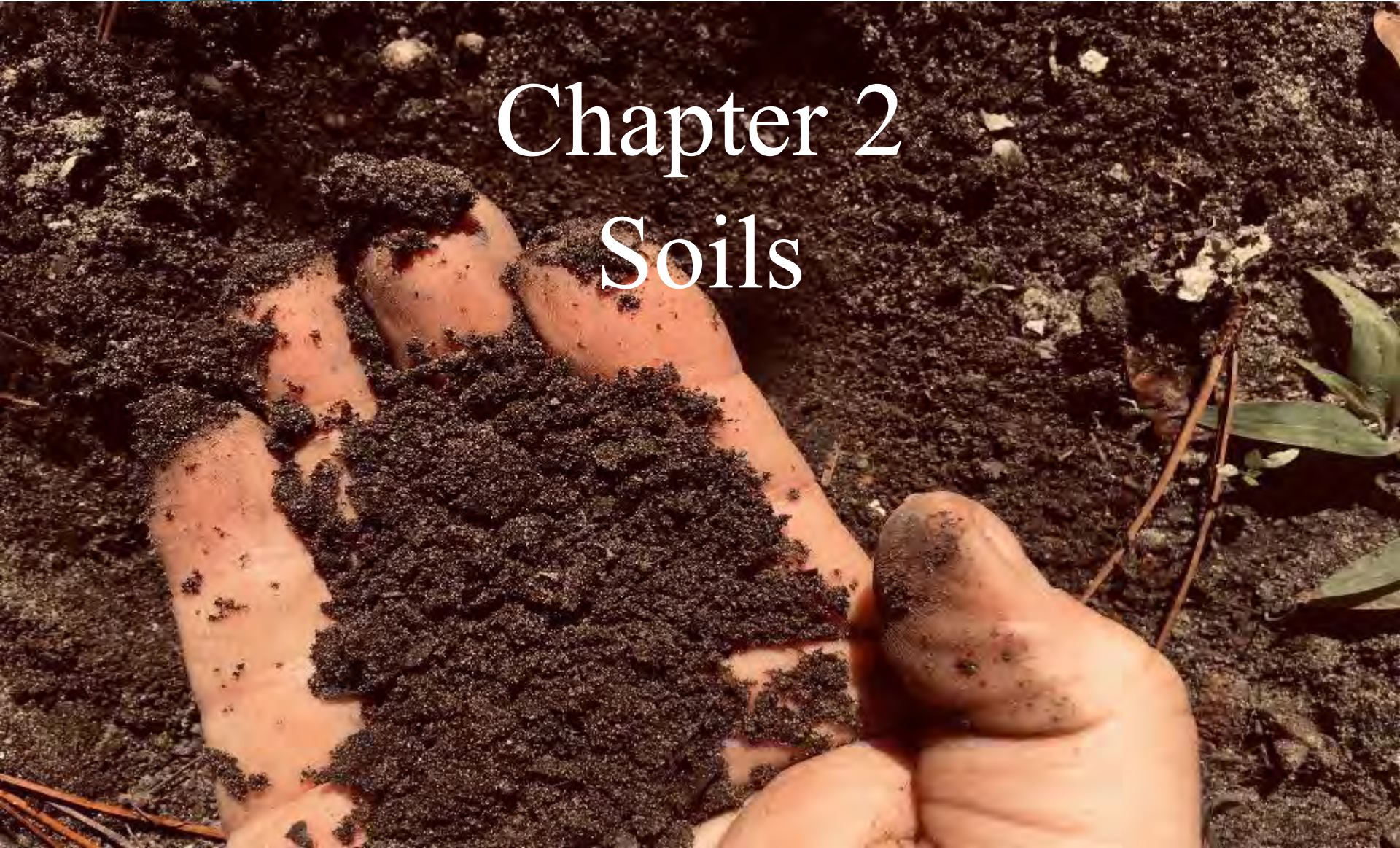
A photograph of a construction site showing significant soil erosion. The foreground is dominated by deep, reddish-brown soil gullies and exposed earth. Sparse, dry vegetation is scattered across the eroded terrain. In the background, a flat, open landscape stretches towards a clear blue sky.

Chapter 1  
Erosion and Sediment Control



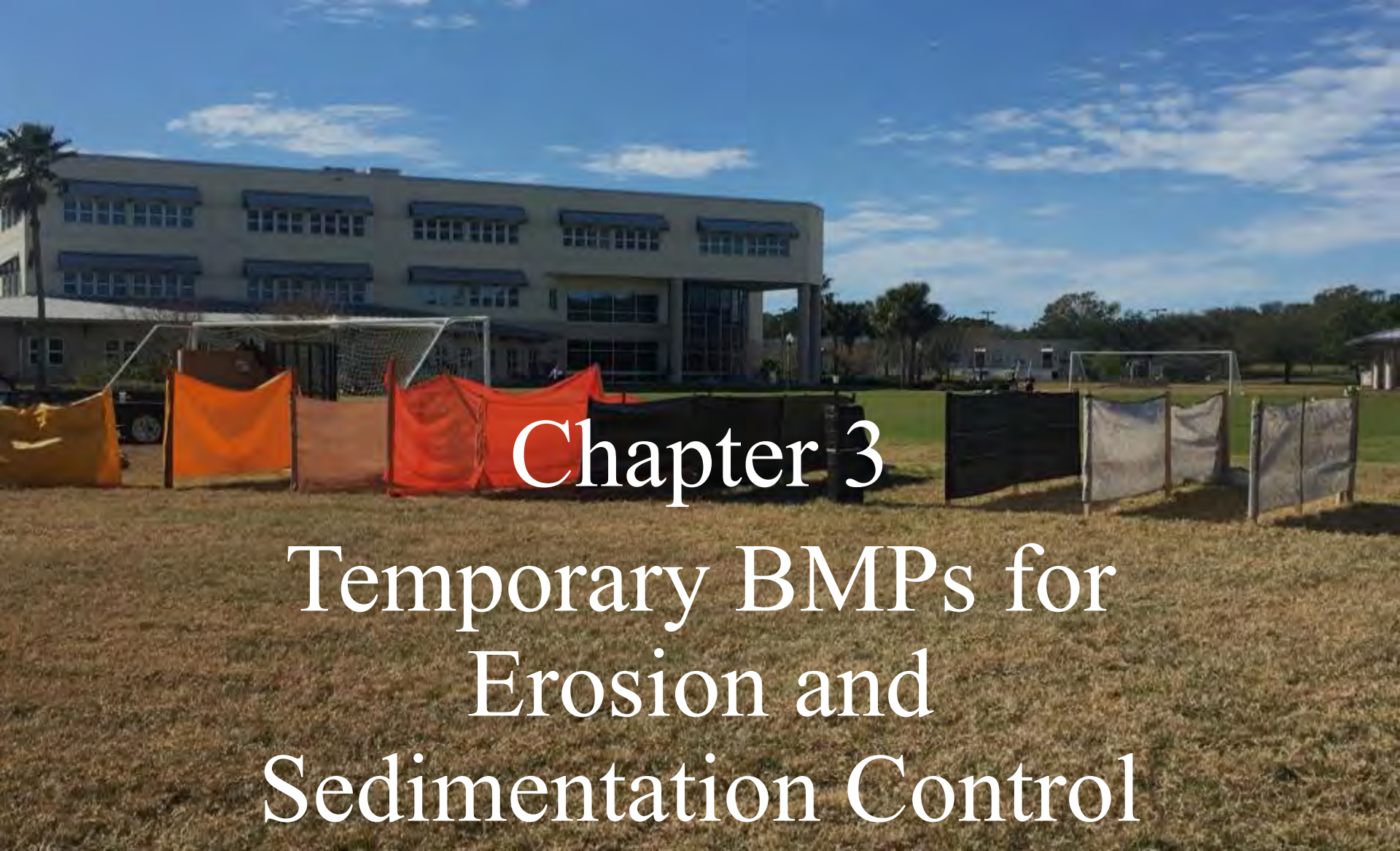
# Tier I Manual

## Chapter 2 Soils





# Tier I Manual

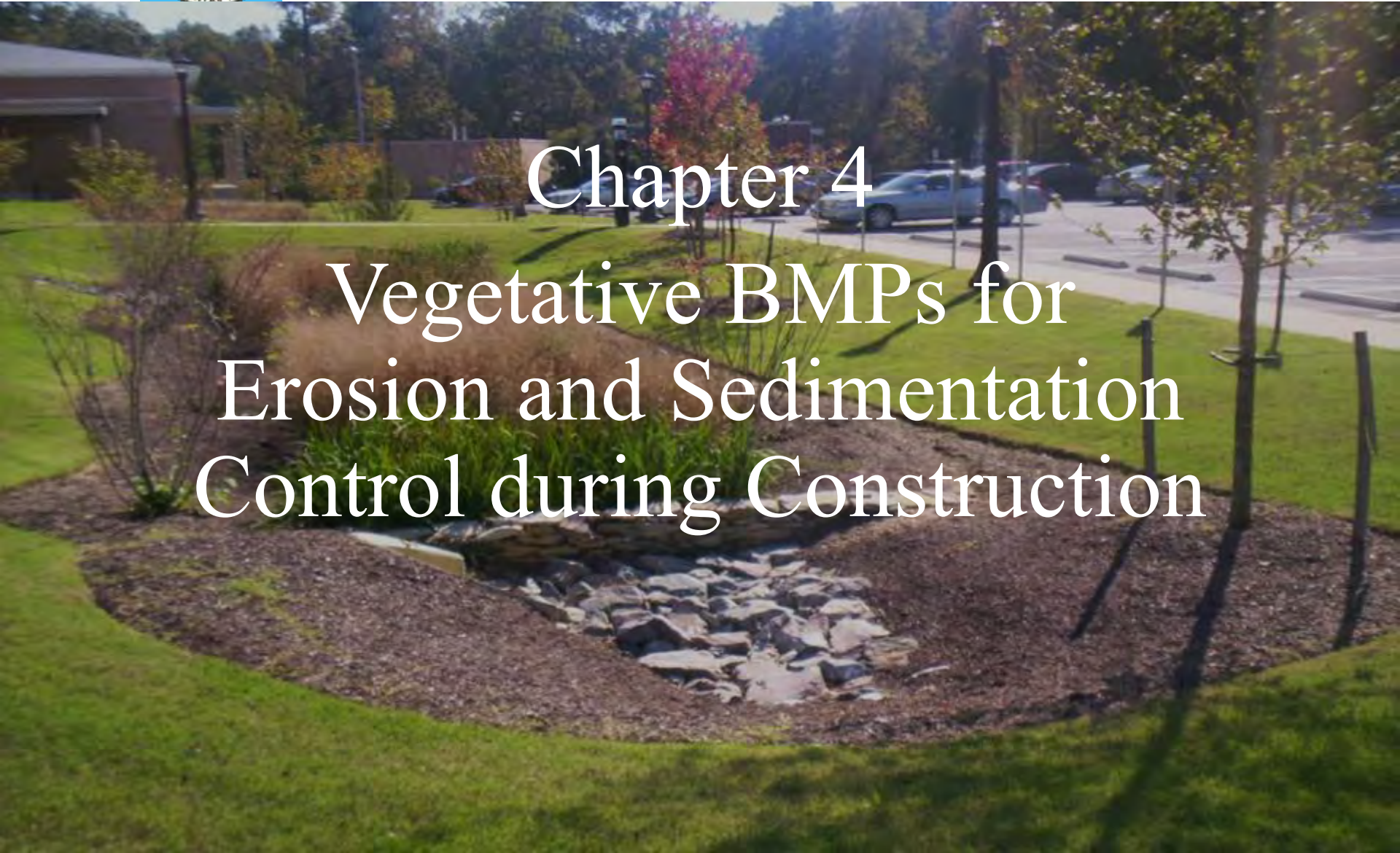
A photograph of a large, multi-story building with a modern architectural style, featuring a prominent glass entrance. In the foreground, a grassy field is partially covered with temporary erosion control measures, including orange and black fabric barriers and a chain-link fence. Two soccer goals are visible on the field. The sky is blue with scattered white clouds.

## Chapter 3

### Temporary BMPs for Erosion and Sedimentation Control



# Tier I Manual

A photograph of a vegetative Best Management Practice (BMP) for erosion control. It shows a stone-lined channel with water flowing through it, surrounded by green grass and various plants. In the background, there is a parking lot with several cars and a building.

## Chapter 4 Vegetative BMPs for Erosion and Sedimentation Control during Construction



# Tier I Manual

A photograph of a construction site. In the foreground, there is a large orange dewatering pump unit on a trailer. A yellow excavator is visible in the background, working on a site that is cordoned off with yellow and white striped safety barriers. The site is surrounded by trees and a clear blue sky with some clouds.

## Chapter 5

## Best Management Practices for Dewatering



# Tier II Manual

## *Qualified Compliance Inspector (QCI)*

Chapter 6 - Regulatory and Statutory Requirements

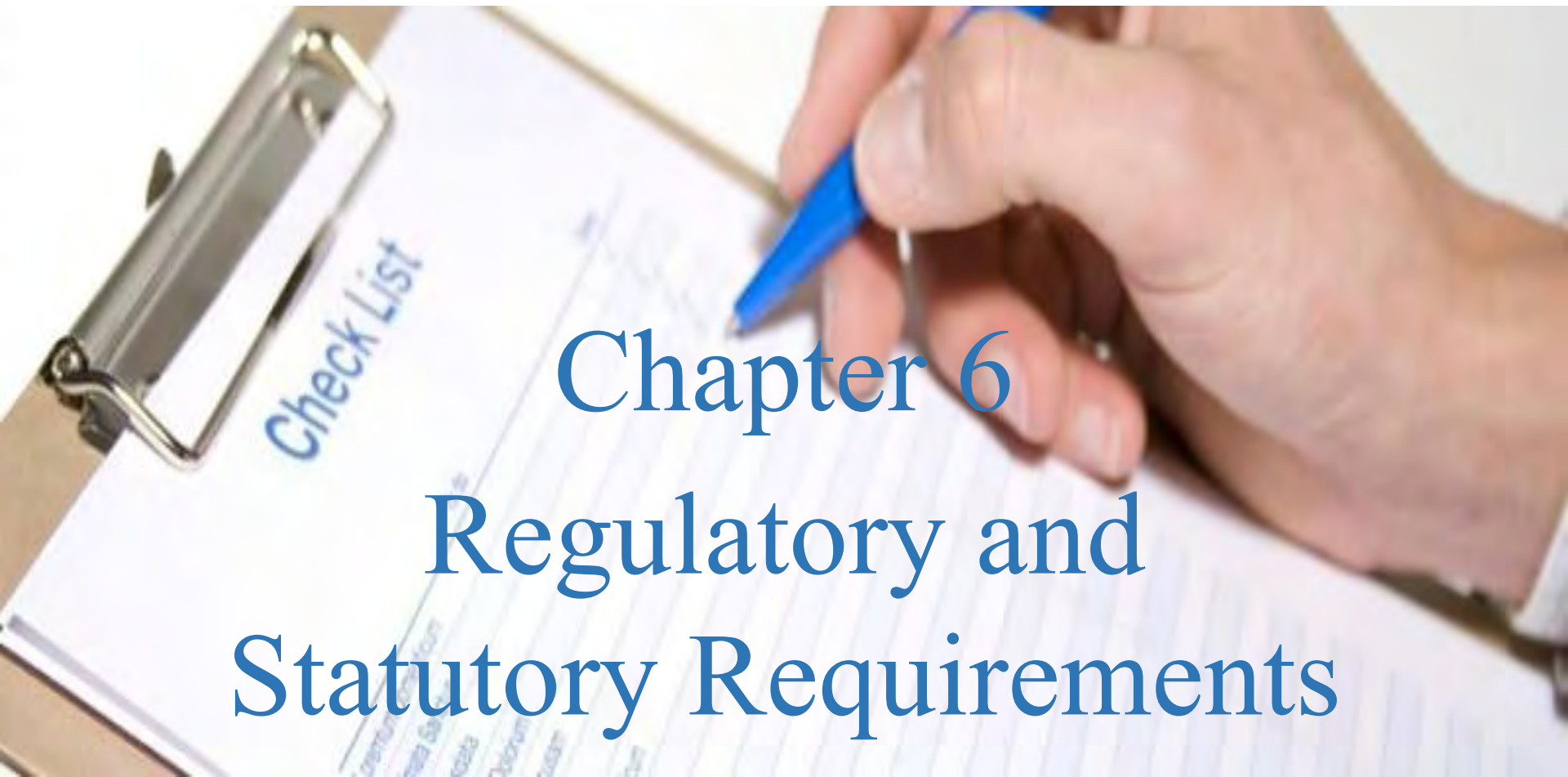
Chapter 7 - The Stormwater Pollution Prevention Plan (SWPPP)

Chapter 8 - Best Management Practice for Stormwater Management

Chapter 9 - Inspection and Enforcement



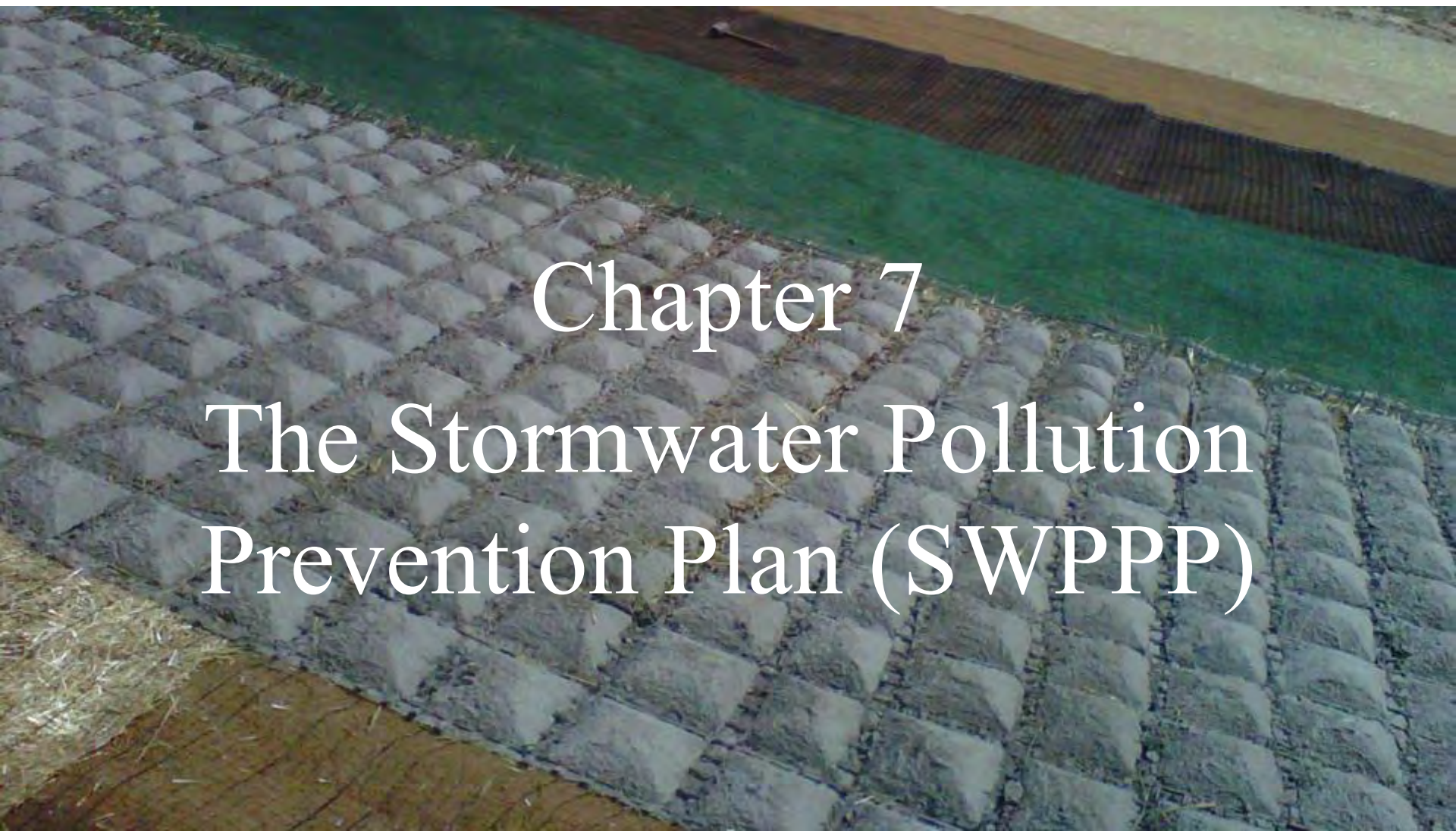
# Tier II Manual

A close-up photograph of a hand holding a blue pen, writing on a document. The document is a checklist, with the words "Check List" visible in blue ink. The hand is positioned over the right side of the page, and the pen is pointing towards the center. The background is a plain, light-colored surface.

## Chapter 6 Regulatory and Statutory Requirements



# Tier II Manual

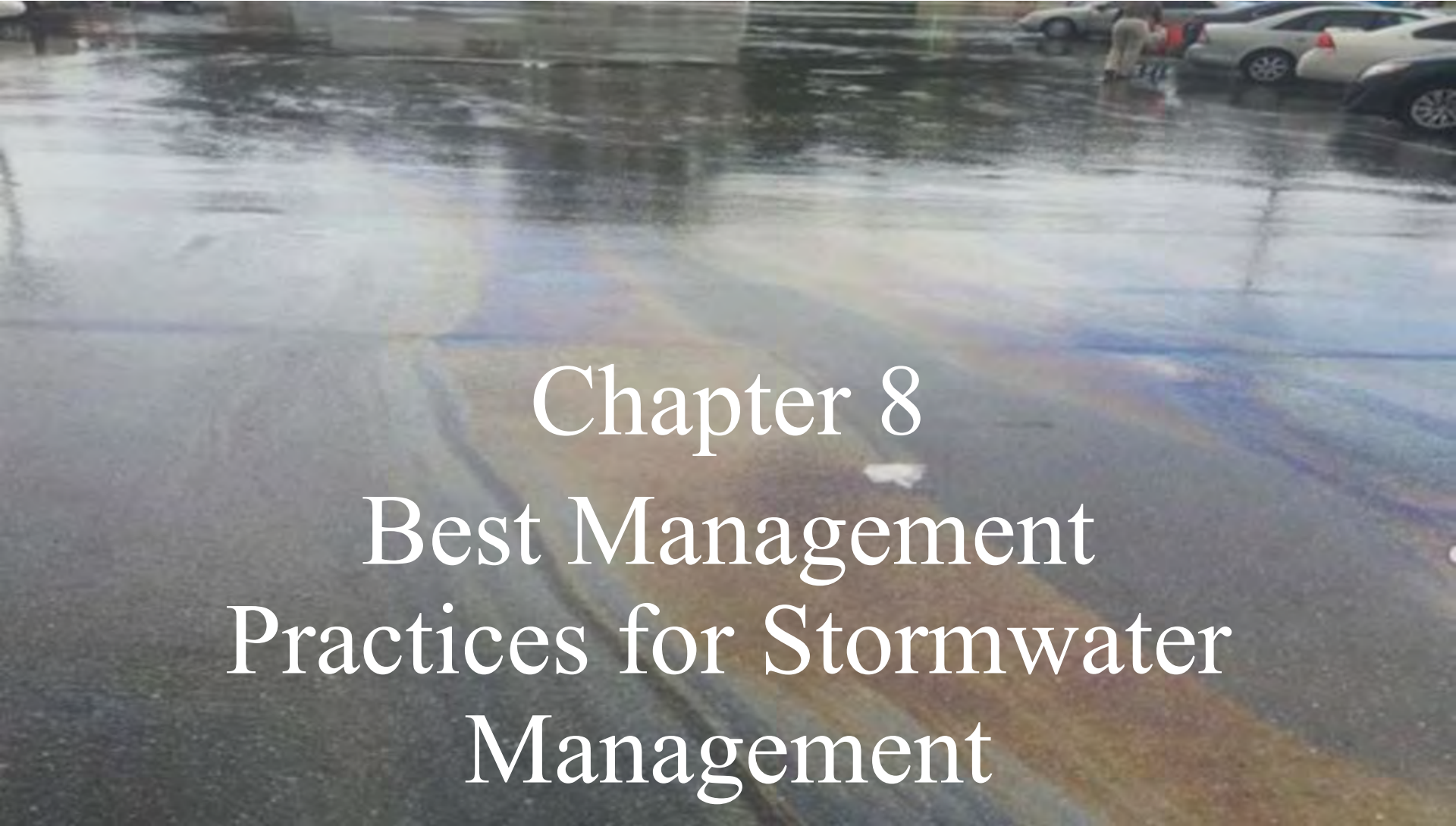
An aerial photograph showing a large-scale stormwater management structure. The structure consists of a grid of concrete blocks, likely permeable pavers, designed to filter and infiltrate stormwater. The surrounding area includes green grass and a dirt road.

## Chapter 7 The Stormwater Pollution Prevention Plan (SWPPP)





# Tier II Manual

A photograph of a wet parking lot with a vibrant rainbow arching across the wet pavement. In the background, several cars are parked, and a few people are visible near them.

## Chapter 8 Best Management Practices for Stormwater Management



# Tier II Manual

A photograph of a construction site. A worker in a yellow safety vest and blue shirt is standing near a black silt fence. In the background, there is a building under construction with a white roof and concrete walls. A dark pickup truck is parked nearby, and other workers in safety vests are visible in the distance. The sky is blue with some clouds.

## Chapter 9 Inspection and Enforcement



# Class Workbook and Syllabus

- Updated workbook
  - Corresponds to Chapter Reviews at the end of each chapter
  - Answers included to be used for exam review
- Class Syllabus
  - Lays out the chapters, timing, and any breaks or lunch period.
  - Indicates which instructor is teaching each chapter
  - Provides further information regarding lunch facilities, parking, and other important information.



# Class Presentations

- Introduction presentation introduces materials covered in class
- One presentation for each chapter
- Step by step train the attendee



**Florida Department of Environmental Protection**

**WELCOME TO:**

**The Florida Stormwater, Erosion, And Sedimentation  
Control Inspector's Qualification Course**

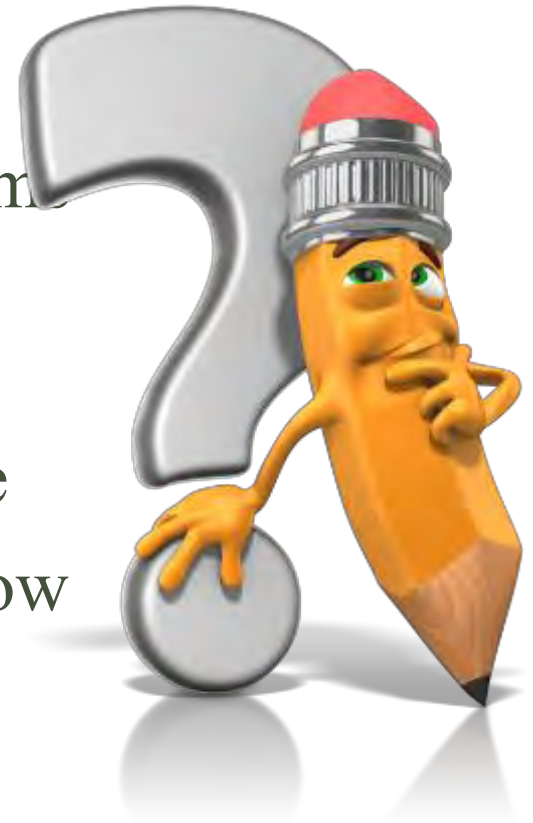
**TIER I – Qualified BMP Installer (QBI), and  
TIER II – Qualified Compliance Inspector (QCI)**

A row of five small landscape photographs: a beach with waves, a sunset over water, a large tree in a field, a river with trees, and a pond in a park.



# Class Exams

- More than one version
- Pre-printed attendee information on exams
- 100 question exam with multiple choice (A,B,C,D).
- Attendees have one (1) hour to complete
- Exam Answer Sheets will be used to allow scanning by ZipGrade





# Instructing a Class – Procedural Changes

*Scheduling/Flyer*

*Registration*

*Teaching the Two Tiers*

*Exam Grading*

*Certificates of Qualification*

*Replacement Certificates*



# Scheduling/Flyer



• Classes scheduled four to six weeks in advance.



• Flyer posted on the FSESCI Program webpage:

<https://floridadep.gov/dear/florida-stormwater-erosion>



Dates	Tier	Location	Instructor	Class Information	Registration	Notes
July 1 and 2, 2018	I and II	Orlando	Hal Lunsford	<a href="#">Orlando Flyer</a>	See flyer for registration instructions	Free
July 5 and 6, 2018	I and II	Tallahassee	Hal Lunsford	<a href="#">Tallahassee Flyer</a>	See flyer for registration instructions	Free

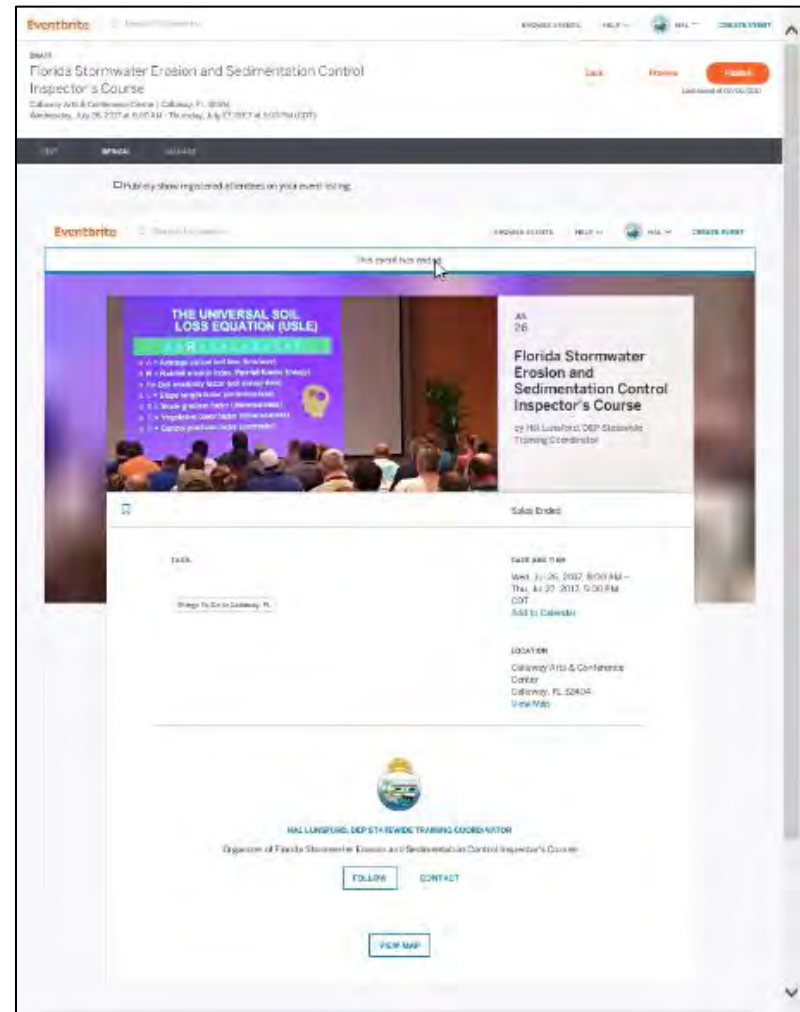


# Registration

Registration is now done one of two ways prior to class:

- Eventbrite
  - Automated, Specific requirements, Attendee Information Form
- Excel template
  - Must be fully completed

Information stored digitally







# Teaching the Two Tiers



- TIER I – QBI or Qualified BMP Installer
  - Geared towards selecting the right BMP, installing them correctly, and maintaining them properly
- TIER II – QCI or Qualified Compliance Inspector
  - Geared towards determining compliance, proper inspection timing, techniques, and documentation

- Certificate of Qualification for completing both Tier I and Tier II courses and getting a passing score on the exam





# Exam Grading

- Zip Grade is a free App for smart phone or tablet
- Grades stored automatically in the cloud as a comma separated value (csv) file
- Student ID links exam grade with attendee name

The screenshot displays the ZipGrade app interface. At the top, there are input fields for 'Name' (Jane Doe), 'Class' (Tallahassee), and 'Date' (E). Below these is a 'Student ID' field with a numeric keypad (1-9, 0) and a 'Key' section with radio buttons for A, B, C, D, and E. The main area is a grid of 20 rows and 10 columns of bubbles, each representing a question. The bubbles are numbered 1 through 100. The 'Key' section is partially filled with radio buttons, and the 'Student ID' field contains the number 123456789. The ZipGrade logo is visible on the left side of the screen.



# Certificates of Qualification

- Instructors send the class information to [FSESCI@dep.state.fl.us](mailto:FSESCI@dep.state.fl.us)
  - Excel file with attendee information and grade
  - Scanned copies of exams and sign-in sheet
  
- Once class information received, certificates processed within approximately two weeks





# Replacement Certificates

- For replacement certificates email [FSSESCI@dep.state.fl.us](mailto:FSSESCI@dep.state.fl.us)
- Include:
  - Inspector name
  - Inspector number
  - Phone number
  - Current mailing address
  - Current email address





# Communication

*Staying Connected*

*Program Contacts*



# Staying Connected

- New Email Address: [FSESCI@dep.state.fl.us](mailto:FSESCI@dep.state.fl.us)
  - Submit information after a class
  - Request replacement certificates
- GovDelivery Notifications:
  - Used to communicate important messages to instructors
- Program materials available through file transfer protocol (ftp)
  - Latest digital version of manuals
  - Download class materials
  - Submit manual edits and corrections





# Program Contacts

*New Program Email: [FSESCI@dep.state.fl.us](mailto:FSESCI@dep.state.fl.us)*

## **Hal Lunsford**

Statewide FSESCI Training  
Coordinator

Phone: (850) 245-8294

[Halton.Lunsford@dep.state.fl.us](mailto:Halton.Lunsford@dep.state.fl.us)

## **Sara Davis**

FSESCI Program Manager

Phone: (850) 245-8825

[Sara.C.Davis@dep.state.fl.us](mailto:Sara.C.Davis@dep.state.fl.us)

