



## Proposal For SolidWorks Academic Software for Mechanical Engineering CAD Lab



**SUBMITTED BY:**

**Shubhra Khare**

**Business Development Manager**

EMAIL: [shubhra@adv-educare.com](mailto:shubhra@adv-educare.com) || MOBILE: +91-9582157255

---

**ADVANCED EDUCARE TRAINING PRIVATE LIMITED**

**Plot No-6, 204, Arrow Corporate Tower, Sector-14, Kaushambi, Ghaziabad, India-201010,  
Telephone: 0120-2770812, 2770814 | Email: [info@adv-educare.com](mailto:info@adv-educare.com) | [WWW.ADV-EDUCARE.COM](http://WWW.ADV-EDUCARE.COM)**

**PROPOSAL NO:** AET |BS|01|20190911

**DATE:** September 11, 2019

**Kind Attention: ( This Is a Proposal for Budgetary Estimation and not a final price)**

**Subject: Proposal of SolidWorks Education Edition Bundle for Mechanical Engineering**

Dear Sir,

This is with reference to our discussion related to above subject.

Advanced Educare Training (AET<sup>®</sup>) is pleased to present this final proposal to your esteemed organization.

On behalf of AET, I would like to thank you and your organization for your interest in our products. You can reach me on my cell for any further clarification on this subject. We look forward to building a successful, long-term relationship with you.

Yours sincerely,



**Shubhra Khare**

**Business Development Manager**

EMAIL: shubhra@adv-educare.com || MOBILE: +91-9582157255

## ABOUT AET

AET was established in 2009 by a team of professionals from global consulting firms having background in engineering and management from eminent institutes and guided by senior people from Industry, Academia, & Government Sector; and specializes in customized IT Training on various software products and development tools addressing the growing needs of the IT market. We specialize in CAD/CAM/CAE/PLM Training. Our expertise in training includes the fields of Mechanical, Automotive and AEC segments. We have a team of more than 15 highly experienced, industry & Technology savvy professionals. AET is headquartered in Kaushambi, Ghaziabad, U.P. with of 3 offices in major cities and satellite offices in other places in India

AET achieved another milestone in its journey towards providing quality service to our esteemed customers. We are proud to announce our relationship with one of the world's largest and fastest-growing technology companies i.e. SolidWorks and Bentley Systems in India.

The SolidWorks Partner Program is an industry leading program developed by Dassault Systems worldwide Value Added Reseller (VAR) and Enterprise Solution Provider (ESP) communities to provide software products, services, training and support to small and medium business (SMB) and large enterprise customers.

SolidWorks recognized the potential of AET's qualified management and focused vision towards Indian customers by associating them as Value Added Reseller (VAR) across India.

AET management is committed to provide support services and bring Industry best practices to your esteemed organization. There by will emerge as a trusted partner by helping your organization to achieve short and long term goals.

Our core strengths:-

- Strong penetrative sales network in North & East India.
- Direct relationships with all major Engineering institute, University & Government nodal body.
- A powerful and efficient team of marketing professionals in all major activity areas under separate business units
- We have our own in-house dedicated team for technical pre-sales and post-sales support to the consumers.



University established by MP Legislature Act no. 44/2011 & duly recognized by UGC u/s 2(f)  
**AKS University**  
 THE UNIVERSITY WITH DIFFERENCE





DassaultSystèmes SolidWorks Corporation, a DassaultSystèmes S.A.subsidiary, offers complete 3D software tools that let you create, simulate, publish, and manage your data. SolidWorks products are easy to learn and use, and work together to help you design products better, faster, and more cost-effectively. The SolidWorks focus on ease-of-use allows more engineers, designers and other technology professionals than ever before to take advantage of 3D in bringing their designs to life

More than 2,103,400 product designers and engineers worldwide, representing 178,100 organizations, use SolidWorks to bring their designs to life—from the coolest gadgets to innovations that deliver a better tomorrow

## For Everything You Design



### **Solidworks Education Edition Software**

**ADVANCED EDUCARE TRAINING PRIVATE LIMITED**

**Plot No-6, 204, Arrow Corporate Tower, Sector-14, Kaushambi, Ghaziabad, India-201010,  
Telephone: 0120-2770812, 2770814 | Email: [info@adv-educare.com](mailto:info@adv-educare.com) | [WWW.ADV-EDUCARE.COM](http://WWW.ADV-EDUCARE.COM)**

Product	Relevance / Use
<b>Solidworks® Premium 3D CAD</b>	the standard in 3D mechanical design software
<b>Solidworks® Simulation Premium</b>	Finite Element Analysis (Linear & non Linear) including composites & Kinematics
<b>Solidworks® Flow Simulation</b>	CFD: Computational fluid dynamics and thermal analysis. HVAC AND COOLING MODULES - unique challenges of electronic packaging and HVAC designers. Simulate the air and heat flows through electronic components and HVAC systems
<b>Solidworks® Sustainability</b>	Sustainable design hinges on life cycle assessment (LCA), an in-depth, cradle-to-grave analysis of your product. LCA helps you to make smart, environmentally friendly decisions before manufacturing begins
<b>Solidworks Plastics</b>	Gives designers or builders of injection molds an accurate, easy-to-use way to optimize them. Quickly create and analyze single, multi-cavity, and family mold layouts.
<b>Photo View 360</b>	create photo-realistic images of SolidWorks models
<b>Solidworks Toolbox</b>	automate assembly tasks with a library of standard parts
<b>Solidworks® Animator</b>	create compelling AVI files from SolidWorks parts and assemblies
<b>Costing Tool</b>	The costing tool helps designers make faster and more repeatable decisions based on manufacturing costs and helps manufacturers automate their quoting processes.
<b>Solidworks Utilities</b>	analyze designs and compare different versions of a design
<b>3D Instant Website</b>	quickly make a website featuring your design
<b>PDM Works</b>	Minimize errors and duplicated efforts by capturing file revision histories automatically. Access desired files
<b>Circuit works</b>	Fully integrated bi-directional interface between Solidworks and PCB Design systems
<b>SolidWorks CAM</b>	The SolidWorks CAM rules-based technology enables you to integrate design and manufacturing in one application, Connecting design and manufacturing teams through a common software tool and 3 D model.

### Solidworks Education Edition Software

**ADVANCED EDUCARE TRAINING PRIVATE LIMITED**

**Plot No-6, 204, Arrow Corporate Tower, Sector-14, Kaushambi, Ghaziabad, India-201010,  
Telephone: 0120-2770812, 2770814 | Email: [info@adv-educare.com](mailto:info@adv-educare.com) | [WWW.ADV-EDUCARE.COM](http://WWW.ADV-EDUCARE.COM)**



- **Solidworks® Premium**
  - Part Modeling
  - Surface Modeling
  - Assembly Modeling
  - Sheet Metal
  - Weldments
  - Routing
  - Mold Design
  - PhotoView 360
  - SolidWorks Toolbox
  - SolidWorks® Animator
  - eDrawings Professional
  - FeatureWorks
  - PDMWorks
  - SolidWorks Utilities
- **Solidworks Simulation Premium**
  - Includes linear stress
  - Displacement
  - Parts & Assemblies
  - Gap/Contact Analysis
  - Frequency & Buckling
  - Thermal analysis
  - Fatigue analysis
  - Drop Test
  - Optimization
  - FEA translators
  - Advanced Dynamics
  - Nonlinear
- **Solidworks Motion Simulation**
  - Simulates the Mechanical operations
  - Power Consumption
  - Interference between moving parts
- **Solidworks Flow Simulation**
  - Laminar and Turbulent Flows
  - Internal and External flow
  - Compressible and Incompressible Flows
  - Heat Transfer
  - Mixing of Fluids
  - Surface to Surface and Solar Radiation
  - Non-Newtonian Liquids
- **Solidworks Sustainability**
  - Intuitive LCA Tool
  - Environmental Impact Dashboard
  - Baseline Measurement
  - Find Similar Material
- **Solidworks Plastics**
  - Avoid costly mold rework
  - Optimize feed system design
  - Estimate cycle time, clamp tonnage, and shot size

The SolidWorks Education Program offers a complete suite of design tools. With the software's intuitive user interface, your students will quickly be able to:

- Conceptualize and visualize detailed designs
- Precisely document designs and part lists
- Run complete analysis and fabrication
- Create technical illustrations for project presentations
- Employ data management for student projects

As a result, students can focus on ideas, problem solving, and working as a team—instead of having to memorize complex commands.



# Skill India

कौशल भारत - कुशल भारत

All Jobs

IIT/IIM Jobs

Govt. Jobs

International Jobs

Walk-in Jobs

Home > Solidworks J...

solidworks,,solid works

Location/Locality

Experience ▾

Salary ▾

Search

Advanced Search

Related Searches

Mechanical Desktop

Production Engineer

ENOVIA

Solid Edge

Project Engineer

...

Filters Applied (0)

Freshness

Last 30 Days ▾

Location

Bengaluru/  
Bangalore (142)

Pune (95)

Delhi/ NCR (87)

1-50 of 611 Solidworks,,solid ... Jobs

Sort by: Relevance ▾



## Mechanical CAD Engineer

i2rdesign

1-3 yrs

Bengaluru(Bannerghatta Road)

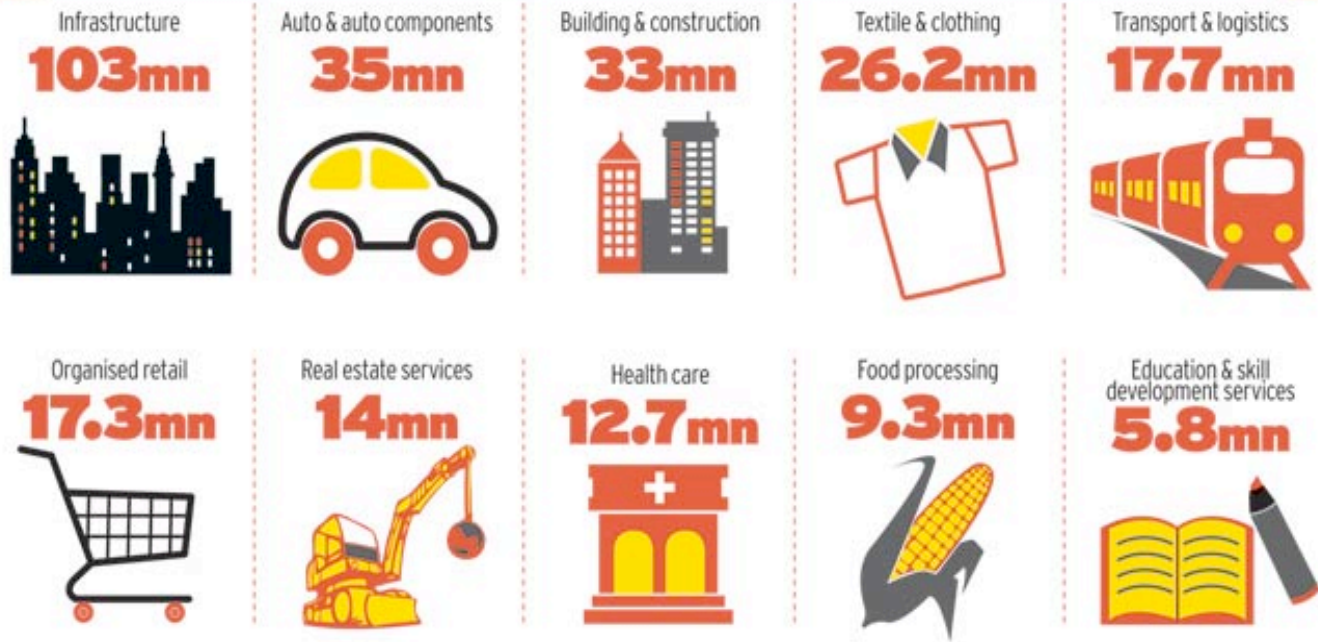
2d, **solid works**, autocad, mechanical design, 3d cad

The documentation will primarily be created using SolidWorks and or AutoCAD  
he scope of The job will span all elements of the project life cycle ...





## GROWING SKILL GAP The expected shortfall in industries in 2022



Source: IM&CS, Aon Hewitt & NSDC

INDIA TODAY .IN NEW DELHI, JULY 23, 2015 | UPDATED 12:42 PM

## Only 7 per cent engineering graduates employable: What's wrong with India's engineers?

A New Delhi-based employment solutions company, Aspiring Minds, conducted an employment focused study based on 150,000 engineering students and found barely 7 per cent suitable for core engineering jobs. India Today spoke to Siddarth Bharwani, Vice President at Jetking Limited, to shed more light on the issue.

According to the HRD ministry, India has 6,214 engineering and technology institutions which are enrolling 2.3 million students. Around 1.5 million engineers are released into the job market every year. But the dismal state of higher education in India ensures that they simply do not have adequate skills to be employed.

“As many as 97% of graduating engineers want jobs either in software or core engineering. But, only 3% have suitable skills to be employed in software or product market and only 7% can handle core engineering tasks.”

**UNEMPLOYMENT**

RELATED STORIES

- 93 per cent MBA graduates are unemployed: Problems with management education
- Confused about career choice? Check

What can happen when such a large population of youth do not get jobs? Experts say that it may cause serious instability in the economic and social conditions in the country, along with large-scale dissatisfaction and disillusionment.

Though the quality of universities, colleges and programmes are going on increasing in the country, the way it is run is also a concern. The HRD ministry, says in a report...

## Changes in the engineering syllabi suggested by AICTE to meet the needs of the industries



Daily Education News  
#BrainBuxa

### 4.6 COMPUTER AIDED DRAFTING

L T P  
- - 3

#### RATIONALE

Computer aided drafting these days is extensively being used in the industry. This subject has been added to enable a diploma holder to make drawings using computer software and take prints/plots.

**SolidWorks**

(on data transfer)

- Introduction to Other Softwares;  
(Pro Engineer/CATIA / Inventor/Unigraphics/Solid Work: Salient features.

---

## Scope for Educational Institutes in India

- Entire Solutions under one Umbrella.
- This lab will be equipped with SolidWorks latest software.
- Training & certification of students
- “AAKRUTI” Student Design Competition gives students an opportunity to explore the crucial and rewarding work of designing.
- Campus will be a trendsetter to lead a new and unique industry driven initiative.
- Campus will get an easy and unlimited access to the latest technology, tools, content and resources for its Faculties and Students.
- Opens up ample training opportunities and business prospects for Campus .
- Campus Can produce better and more industry ready Students as per the market requirements.

### **Our Solution Includes:**

Intra operable Software Product portfolio  
Professional Services & Learning  
Professional Communities Networking

### **Support from AET** : AET will play a vital role between Campus & SolidWorks

- Organize on demand FDP program on different solutions.(optional)
- Organize training program on different solutions with CSWA Certification.(Optional)
- Help campus faculty & students for connect to SolidWorks

## Benefiting educators, students and users :

Educators	Students	SolidWorks Users
Time to teach disciplinary knowledge	Preparation for class in advance	Recruit higher quality talent
Learning paths for your students to learn technology at their pace	Less time spent doing assignments	Lower recruiting costs
Reinforce classroom theories through practical application	No additional investment in expensive school materials	Foster relationships among stakeholders in technical education
Inspire and empower your students	Better work for better grades	More viable, confident candidates
Develop graduates who are career ready	Become more viable candidates for a career	More productive and prepared new hires
Save money	Showcase capabilities with project portfolios	New hires that are familiar with industry software
	Gain experience with the industry and become well-rounded	

### ANNEXURE I

#### Commercial Proposal for Bentley Academic SELECT Software Bundle:

S.No.	Specification	Quantity*	Nature	Price (INR)**	GST@18% (INR)	Total(INR)
1.	SOLIDWORKS EDUCATION EDITION	1	Perpetual with 1 year AMC	₹ 4,50,000/-	₹ 81,000/-	₹ 5,31,000/-

\*Upto 60 license

**\*\*Special promo price starting from ₹ 3,00,000/- + GST (Students training & certification included)**



---

## ANNEXURE-II

### **Terms and Conditions**

---

The terms for the supply of goods are as follows:

- a) **Specifications:** Complete specifications for mentioned Software are highlighted in Proposal.
- b) **VALIDITY OF THIS PROPOSAL: 30 Days**
- c) **Period of Delivery:** Software shall be dispatched within 30 days of receipt of firm order. If applicable, Road Entry Certificate / Octroi Certificate to be issued by the Institution with the Institutional Order.
- d) **Warranty:** Normal **commercial warranty/guarantee for a period of 01 Years** has been supplied with the goods. The period of warranty shall commence from the date of license.
- e) **Supply of Updates:** Updates and upgrades can be downloaded during AMC.
- f) **Award of Contract:** The order for supply of Goods/Services shall be placed to:

**Advanced Educare Training Private Limited**

Plot No-6, 204, Arrow Corporate Tower, Kaushambi, Ghaziabad, India.

**TIN: 09588821435C | PAN No AAKCA0998C | GISTIN No: 09AAKCA0998C1ZJ**

- g) **Payment Terms:** 100% advance payment have to be made in the form of a cheque/ demand draft payable at par to “Advanced Educare Training Private Limited” on any bank at NCR

## System Requirements

Configuration	Recommended for Use
Processor Type	I3 or Higher
Processor Speed	3 GHz or More Recommended
Operating System (legal)	-Windows 7 ( Professional, Ultimate and Enterprise editions only) – 64 bit -Windows 10 (Recommended)
RAM (Main Memory)	2 GB Minimum 4 GB or More Recommended
HDD	80 GB Minimum 120 GB or More Recommended
HDD Space for Installation	20 GB Minimum
HDD Space for Working	40 GB Minimum 80 GB Recommended
Pointing Device	Optical Mouse
Graphics Display Adapter	Any SolidWorks approved adapter could be used for effective display. You may please find the list of recognized type @ <a href="http://www.solidworks.com/pages/services/VideoCardTesting.html">http://www.solidworks.com/pages/services/VideoCardTesting.html</a>
Drive	Combo DVD
Software Utilities	Microsoft Office latest Internet Explorer 8.0 or higher Acrobat Reader 7.0.7 or higher
Connectivity	Windows Networking LAN, WLAN