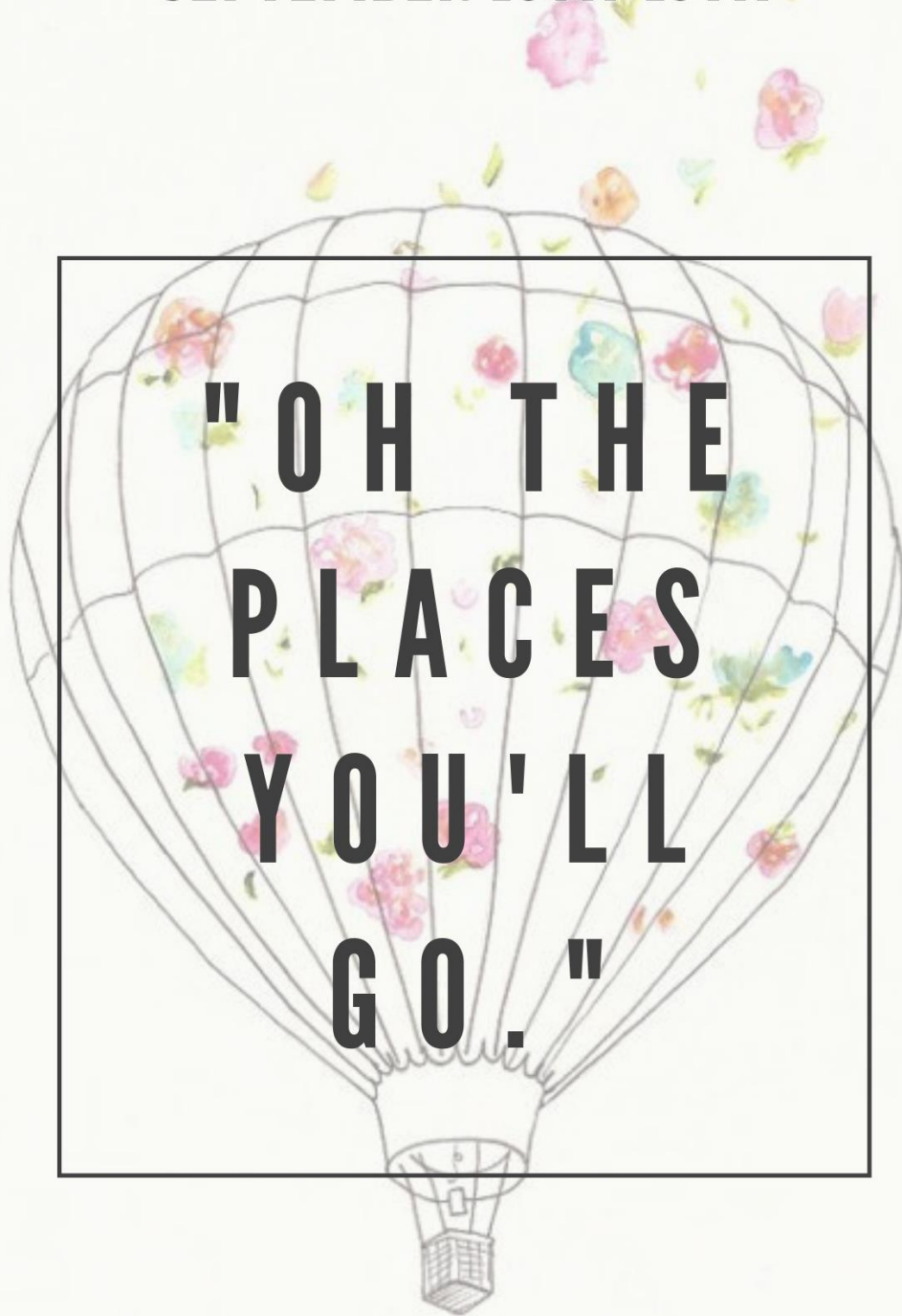


PANHELLENIC FALL RECRUITMENT
SEPTEMBER 13TH-15TH

EMAIL SJEFFERYS_LAYMAN@WESTLIBERTY.EDU FOR QUESTIONS!



IG // @WLU PANHELLENIC
TWITTER // @WLU_PANHELLENIC

LEARN ABOUT RECRUITMENT AND OUR
CHAPTERS AT THE FOLLOWING
INFORMATIONALS IN THE ALUMNI ROOM:

WEDNESDAY, AUG 28TH & TUESDAY, SEPT 3RD

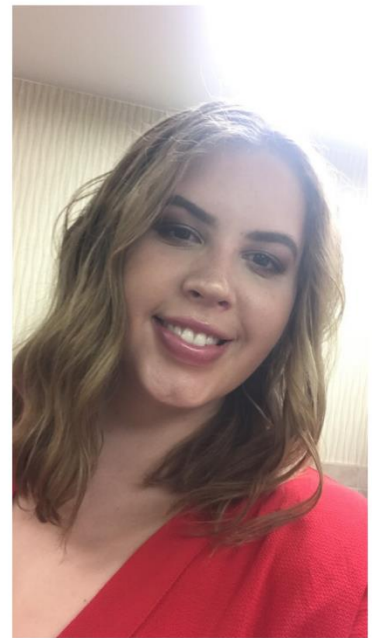
SORORITY TERMS

These are common terms that you may hear leading up to, or during the Recruitment process.

1. **Potential New Member (PNM):** A woman who is eligible to participate in recruitment.
2. **Legacy:** A daughter, sister, granddaughter of an initiated member of a sorority. Being a legacy does not guarantee a bid to a sorority. Each inter/national organization has its own policy for invitations to legacies during recruitment.
3. **Active:** A collegiate, initiated member of a sorority chapter.
4. **New Member:** A person who has accepted a bid from a sorority but is not yet an active member of that chapter. Chapters will have some sort of new member process during which the new members learn more about the sorority and prepare them for initiation.
5. **Bid:** A formal invitation to membership fraternity or sorority.
6. **Bid Day:** The final day of recruitment when potential new members receive bids to join chapters and become new members. Each chapter will usually host a Bid Day activity to help the new members get to know each other and the rest of the chapter. The unanimous Agreements state that there is to be no alcohol use of men associated with recruitment or Bid Day.
7. **Quota:** The number of potential new members to which each chapter can offer bids during formal recruitment. This is determined with a formula involving the number of chapters and the number of women participating in bid matching.
8. **Continuous Open Bidding (COB):** An opportunity for chapters that do not reach quota during primary recruitment to bid to total and/or quota. The continuous open bidding process is less formal, and not all chapters will participate in continuous open bidding.
9. **Badge:** A pin of a fraternity or sorority membership worn by initiated members.
10. **Big Sister (Big):** An active member of a chapter who is paired with a new member as a mentor.
11. **National Panhellenic Council (NPC):** A council for all the National Panhellenic Conference sorority chapters on a campus. This council serves as the governing body for all NPC chapters of campus and organizes the recruitment process. Each chapter chooses a delegate to sit on its College Panhellenic council.
12. **Philanthropy:** A charitable fundraiser or service project sponsored by a fraternity or sorority.
13. **Initiation:** A traditional ceremony that brings a new member into full membership of a sorority or fraternity.

PANHELLENIC COUNCIL

Meet the Executive Board on the Panhellenic Council



Sydney Jefferys

Vice President of Recruitment

Year: Junior

Hometown: Morgantown, WV



Abby Baranski

President

Year: Junior

Hometown: Wheeling, WV

"I have gained so much by going Greek. I have not only gained friendships, but confidence and leadership skills as well. By going Greek, I have seen myself grow into a better woman, friend, and student. The opportunities that Greek life have given me have been absolutely wonderful. The friendships are like no other. These friendships will last a lifetime. There is no doubt that whenever I need something I always have a sister who is there for me. From study sessions to late night binging of junk food to even cry sessions sometimes, they always have my back. I have said it many times and will always continue to say it but going Greek showed me what true friendship is and I couldn't be more thankful. The memories will last forever and are the best memories I will ever have from my time at college. Everyone wants you to be your best self and pushes you to do so. I would not change going Greek for anything. They are family."



Kylee Carcione
Treasurer
Year: Senior
Hometown: Wheeling, WV



Follow our social media accounts:
IG: @wlupanhellenic
Twitter: @WLU_Panhellenic
Facebook: West Liberty Panhellenic



Brie-Ann Young
Secretary
Year: Junior
Hometown: Parkersburg, WV



Kendahl Stanley
Vice President
Year: Junior
Hometown: Wheeling, WV

WHAT IS A RHO GAMMA?

Recruitment Counselor

A Rho Gamma is your Recruitment Counselor who is a Panhellenic Sorority member who has disaffiliated herself from her chapter during formal membership recruitment. She is specially trained to help potential new members and to answer any questions they may have about sorority membership. She is here to help find your home in what ever sorority you chose! Feel free to ask her any questions you may have; she is unbiased and will answer anything she can.

MEET THE RHO GAMMAS!



Sydney Glover

Major: Psychology with a minor in business

Year: Senior

Hometown: Middlebourne, WV

"Some advice I would give to a PNM would be to keep an open mind going into recruitment. Give every chapter a chance and give it your best shot. Follow your gut and you will end up in the right place!"



Harley Cecil

Major: Criminal Justice

Year: Junior

Hometown: Moundsville, WV

"The advice I would give a PNM is not to go with the sorority that is "well known/popular". Do not go with the sorority that your friend is rushing.

Choose the sorority that you feel the most comfortable in and make you feel like you are home. Do not be nervous to be yourself in the room of the different sororities, because that is how you are going to find out who you fit in the most. We are nervous too. Stand out it is what they will remember the most about you."



Madison Barnes

Major: Dental Hygiene

Year: Junior

Hometown: Shelby, OH

"Coming into college I was lost. I didn't know anyone and am not a very social person. I got through my first semester pretty well but I still didn't have any friends. During my spring semester I met one of my best friends, she introduced me to her sorority and immediately I knew that this is where I wanted to spend the rest of my college years. Greek Life has for sure changed my whole college experience. Before I was very shy and didn't have any friends, but after joining Greek Life I participate in many sisterhood events and I am not afraid to meet new people and make lifelong friendships."



Jenna Gault

Major: Exercise Physiology

Year: Senior

Hometown: Pittsburgh, PA

"Throughout high school and my first year at West Liberty, I was very shy and bashful. I rushed my sophomore year and I can honestly say it was the best decision I could have made. The process was long and made me continuously wonder "is it worth it?". The answer is yes. The women you will meet are truly genuine and empowering, and have all helped me gain the confidence I needed. We are all active in the community, we are strong intelligent women, and we all truly care for one another. Although not mandatory, greek life will give you many leadership opportunities that should be taken advantage of and open doors to networking, internships, and future careers. Joining greek life has changed me for the better. I am more than just a stereotype. I am a leader, a sister, a philanthropist, and a friend."



Mycah Ritchea-Yoho

Major: Zooscience and applied conservation

Year: Sophomore

Hometown: Limestone, WV

"The best part about going greek has been meeting so many wonderful new people and learning to get out of my shell more. I love the people I have met through going greek and hope to meet many more people in the future. I also feel like I have really found a group of people who will be there for me through whatever I am going through and knowing this make me thankful for joining a sorority."

RECRUITMENT ADVICE

How to have a successful Recruitment Week

DO keep an open mind. It is highly important that you consider all your options before making your final decision. It is essential that you find the sorority where you feel most at home and you feel as if you connect the most. If you are stuck, consider creating a pros and cons list and look at your options. Membership to your chapter is for life, be sure to make the decision that you feel is best for you.

DON'T discuss any outside activities regarding alcohol or drugs. In addition to this, it is unacceptable to participate in these activities during formal recruitment. It is important that these rules are respected and followed.

DO look presentable! Most likely, this will be the first time you are meeting these girls. It is important to make a good first impression. Follow the Recruitment outfit guide to assist you with your attire for the week. Be sure to not overdo your makeup and keep it simple.

DON'T be late to Recruitment. Punctuality is key and being late is not acceptable. Try to arrive 10 minutes before the event starts to make sure you are prepared for the evening. If you will be absent for a day of Recruitment, be sure to stay in contact with your Rho Gamma.

QUESTIONS TO CONSIDER ASKING DURING FORMAL RECRUITMENT:

- How much of a time commitment is Greek Life?
- What do you enjoy most about being in Greek Life? What do you enjoy most about your organization?
- What does the sorority do to support your philanthropy?
- What are the dues for the sorority and what do they go towards?
- How do you balance schoolwork and Greek Life?
- Why did you join a sorority?
- How have you changed since you have joined Greek Life?
- What makes your sorority unique?
- What is your stance on hazing?

Round 1: Open House

September 13th, 2019 | Visit all 5 Chapters: 30 minute visits

The **goal** is to introduce yourself, find out who they are, and let them know who you are.

Conversations will be casual. You may meet only one member or to 4, just depending on the sorority. Be prepared to talk about where you are from, what activities interest you, what your major might be, where you went to high school, etc.

What follows: after this round of events, you will have the opportunity to eliminate one chapter.

What to wear: A casual sundress or jeans with a nice top with flats or sandals and conservative jewelry.



Round 2: Philanthropy Morning

September 15th, 2019 | Visit 4 Chapters: 45 minute visits

The **goal** is to learn about each philanthropy and what it means to the sorority. You also want to form connections with the women you meet tonight. Let them know who you are, and that you are interested in joining them.

Conversations will be relaxed. You will get another chance to meet more women in each sorority you visit; maximize this opportunity! Be prepared to talk about the chapter's philanthropy, issues that you are passionate about, why you chose West Liberty, what you like to do in your spare time, etc.

What follows: after this round of events, you will have the opportunity to prioritize which chapters you would prefer to return to, Chapters will do the same. Women may then be asked back to a max of 2 chapters for Round 3.

What to wear: A casual sundress or jeans with a nice top with flats or sandals and conservative jewelry.

Recruitment: Round 2



Round 3: Preference Morning

September 16th, 2019 | Visit 1 or 2 Chapters: 1 hour visits

The **goal** is to learn why the sorority means so much to each member, and to get a sense of whether you see yourself as a part of their sorority for life.

Conversations will be more serious. Most sororities will have one or two girls greet you. Be prepared to hear women speak about what their sorority stands for. Things can get emotional with heart-felt poems, readings, ceremonies, and stories.

What follows: after this round of events, you will rank, in preference order, the sororities you attended (up to 2). It is important to remember that these sororities have already chosen you to participate in their preference. If you list all that you attended in the order of preference, there is a high probability that you will receive a bid (invitation to join their sorority). You will also sign the Membership Recruitment Agreement of Binding Acceptance (MRABA), which outlines PanHellenic policy regarding the acceptance of bids. Your Rho Gamma will give you more information when that time comes.

What to wear: Preference is the most formal round of recruitment. Cocktail length, semi-formal attire should be worn. Do not wear casual attire, anything revealing, or long, formal or prom-like dresses.

Recruitment: Round 3



SORORITY LIFE

What is it?

It can be difficult to imagine what being a sorority member is all about, especially when we see negative portrayals of them in the media and sometimes in the news. Most members will admit that after becoming one, they found sorority membership to be an even more significant, serious part of their life – and an honor to be held to an even higher standard than they first imagined. Our sororities believe strongly in many of the same standards. Here we try to explain what sorority is, one piece at a time.

Values & Standards

Values and standards make it possible for sororities to hold their members to a higher degree, creating an atmosphere of respect, loyalty, and pride. When you pledge a sorority, you pledge to uphold the chapter standards and to take an active role in the betterment of the organization. These standards reflect who we are and what we represent – on campus and around the world. This is the responsibility of every sorority woman.



Greek Life affords sorority members the chance to unite with amazing women from every chapter in an effort to support the PanHellenic community. Through philanthropy events and community service, each woman is encouraged to reach outside the walls of her chapter to achieve a goal for a bigger cause. The PanHellenic community affords opportunities to better the world around us while forming valuable and lifelong friendships. PanHellenic unity is the glue that holds the entire community together.

Unity

Lifetime Adventure

The four years of collegiate Greek experience is only the beginning – the beginning of a lifetime adventure within a sorority. Sorority women have numerous opportunities to stay connected to and involved with their national or local sorority for a lifetime. Women can join alumnae chapters, attend collegiate events, serve on chapter advisory boards or for the national organization, just to name a few. Additionally, the friendships you forge with sisters now will persist throughout life; these women may be your bridesmaid, the godparents of your children, or annual vacation partners.



Commitment

One of a sorority's top priorities is the academic success of its members. Every sorority at WLU sets high standards for its members' academic achievement and provides resources and support to lead members to academic success. The Greek women's average GPA is consistently higher than that of non-Greek women here at West Liberty.

Additionally, sororities demand financial commitment with dues and other fees separate from tuition costs. Sorority provides opportunities for women to experience college in its best form. This may include philanthropy and other campus events, formals, and other social events. We must also uphold our financial commitments to our national organizations and local PanHellenic dues; thus, it is the job of every sorority woman to stay current with her dues. While some of the chapters on campus higher dues than others, this should not be a factor in your decision to find your home with that group of women. All chapters on campus offer payment plans that will allow you to keep up with dues.



Being a member of a sorority opens up numerous doors to leadership opportunities. Collegiate chapters are their own governing bodies, responsible for their actions, finances, risk management, public image, and the safety of its members. This self-sufficiency mandates multiple leadership offices, which are available to its members throughout their collegiate sorority experience. And not only are Greek women involved in their sorority, but they are also involved in almost every other campus organization program.



Leadership Development & Campus Involvement

Philanthropy

Sorority life offers many opportunities, one of the best being the chance to serve others. By working together and supporting each other's philanthropic efforts, we are able to hold successful fundraisers that annually raise thousands of dollars for our philanthropies. Service is an important part of each of our organizations and helps to remind us of one of the reasons we became Greek - to make a difference.



Policies and rules regarding hazing, alcohol, & social events are put in place for the Greek community to protect each sorority locally and nationally, and most importantly to protect the welfare of each of our members. We work very hard to educate each member of her social responsibilities, as she holds liability not only for herself, but also for her sisters, her chapter, and her sorority. By respecting the established rules on risk management, we show that we care for each and every member of our community.

Risk Management

CHAPTERS

Meet the sororities at WLU

ALPHA XI DELTA

National Chapter

Chapter Name: Epsilon Theta

Founded: April 17th, 1893 at Lombard College

WLU Founding: October 1966

Symbols: The Quill

Mascots: BetXi Bear

Colors: Double Blue & Gold

Flower: Pink Killarney Rose

Jewel: Pearl, Diamond

Nickname: AXiD, Alpha Xi

Philanthropy: Autism Speaks

Annual Fundraisers: Light It Up Blue, Football FrenXi

New Member Dues: \$580

Active Dues: \$380



@west_libertxi



@betarhoepsilon



BETA RHO EPSILON

WLU Founding: April 1st, 2009

Symbols: Peacock

Colors: Purple, Yellow, & Blue

Flower: Sunflower, & Yellow Tulip

Jewel: Mystic Topaz

Nickname: BPE, Beta Rho

Philanthropy: YWCA, Child with Cancer Project

New Member Dues: \$40

Active Dues: \$80



CHI OMEGA

National Chapter

Chapter Name: Nu Theta

Founded: April 5th, 1895 at the University of Arkansas

WLU Founding: November 1966

Symbols: Skull & Cross Bones, Owl

Colors: Cardinal & Straw

Flower: White Carnation

Jewel: Pearl, Diamond

Nickname: Chi O

Philanthropy: Make-A-Wish, Owl Pals

Annual Fundraisers: Wish Week

New Member Dues: \$610

Active Dues: \$345 in Fall, \$250 in Spring



@chio_wlu



DELTA THETA KAPPA

Local Chapter

WLU Founding: August 29th, 1995

Symbols/Mascot: Tiger

Colors: Navy Blue & Burgundy

Flower: Daisy

Nickname: DOK

Philanthropy: Ronald McDonald House, Breast Cancer, MS

Annual Fundraisers: Turtle Races

New Member Dues: \$35

Active Dues: \$60



@deltathetakappa

LAMBDA PSI SIGMA

Local Chapter

WLU Founding: September 7th, 2005

Symbols: Sun, Moon, Stars, Celestial

Mascot: Goddess

Colors: Pink, Purple, Silver, Teal

Flower: Purple Orchid

Jewel: Diamond & Sapphire

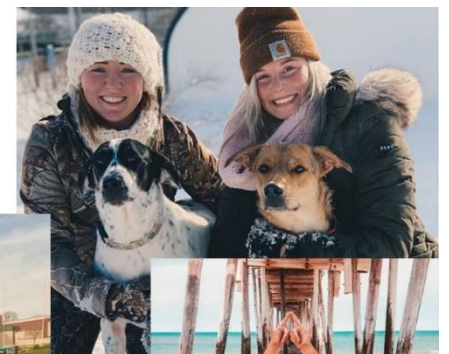
Nickname: Lambda

Philanthropy: ASPCA

Annual Fundraisers: Mr. Irresistible

New Member Dues: \$85

Active Dues: \$70



@lambdapsisigma