



*South Panola
School District*

SOUTH PANOLA SCHOOL DISTRICT



*Providing Opportunities
For Educational Excellence*



The South Panola School District serves approximately 4,500 students on six campuses throughout Batesville and the southern portion of Panola County.

SPSD is fully accredited by the Mississippi Department of Education. The school district employs more than 300 certified teachers, of which over 55 are National Board Certified. A rigorous curriculum is in place to challenge students each day through the regular course offerings, as well as the opportunities for students to excel in MERIT (gifted curriculum), Dual Credit/Enrollment, AP and Accelerated course offerings in all four subject areas at the secondary level, which offers students the opportunity to earn college credits before leaving high school.

At SPSPD, we believe that education is the foundation for lifelong learning and for becoming productive members of the local and global communities.

By involving parents, faculty and stakeholders in shared decision making, we constantly strive to create an educational environment that is safe, productive, challenging, participatory and highly motivating.



The South Panola School Board, Jerry Cooley (from l.), Buddy Gray, Sandra Darby, Lygunnah Bean and Kenny Hopper, was recognized for its leadership training efforts in the Mississippi School Boards Association's 2015 Honors Program. The SPSPD Board was one of 19 school boards in the state recognized with the Board of Merit designation, which is awarded to boards with a total number of 100 or more MSBA-approved board training hours earned during the school year.



South Panola School District School Board Vice-President Lygunnah Bean (center) was named the Mississippi School Boards Association's School Board Member of the Year for 2015. Bean was presented the award by MSBA Executive Director Michael Waldrip in March 2016.

SPSPD Board of Trustees

Sandra C. Darby, President
Lygunnah Bean, Vice-President
Buddy Gray, Secretary
Kenny Hopper, Member
Jerry Cooley, Member

Tim Wilder, SPSPD Superintendent



www.facebook.com/SouthPanolaSD
[@SouthPanolaSD](https://twitter.com/SouthPanolaSD)



Download our re-designed app!



TABLE OF CONTENTS



Superintendent's Welcome
Page 4



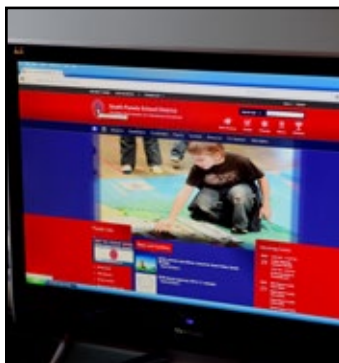
School Profiles
Pages 5-11



SPSD Athletics
Page 12



Join The Club
Page 13



SPSD Online
Page 14



Building Projects
Page 15

This publication was published by the South Panola School District Communications Department and printed by University of Mississippi Printing and Graphic Services in April 2016. All contents of this issue are copyrighted 2016 by the South Panola School District. Reproduction without written permission is strictly prohibited.

The South Panola School District shall not discriminate on the basis of race, color, sex, age, disability, religion, national origin, or military status with regard to any policy, procedure, or program operation. For inquiries regarding this policy on discrimination contact: Title IX Coordinator: Mr. Charles Beene, ADA/504 Coordinator: Mrs. Melinda Price





A MESSAGE FROM THE SUPERINTENDENT

Thank you for taking the time to open this publication and learn about all of the great things we have going on within the South Panola School District.

Our hope is this booklet

will provide you with the necessary information about each of our

schools, as well as our athletic programs, clubs and organizations, online presence and building projects.

This publication is a mere snapshot of all of the great undertakings going



Tim Wilder



South Panola School District Superintendent Tim Wilder (right) congratulates Batesville Middle School fourth-grade teacher Beverly Patton on being named 2015-16 SPSD Teacher of the Year as BMS teacher Meg Woods looks on.

on here at South Panola as we strive to provide opportunities for educational excellence to every stu-

dent who attends a school within the district.

Tim Wilder

CURRICULUM AND INSTRUCTION

The Office of Curriculum and Instruction is dedicated to supporting our schools in providing high quality curriculum and instruction to ensure all students exit South Panola School District with the skills needed to be successful in college and/or career.

The Mississippi College and Career Ready Standards (MCCRS) guide administrators, teachers and interventionists in creating rigorous lessons to improve classroom instruction. It is the goal of the Office of Curriculum and Instruction to align all lessons and assessments to the MCCRS to connect the teaching and learning process.

South Panola School District

209 Boothe Street • Batesville, MS 38606 • 662-563-9361

Principal Profile



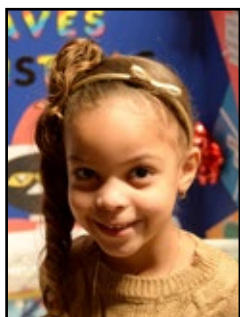
LaSherry Irby

**Principal at
BES since:
2007**

**Years with
SPSD:
8**

**Years in
education field:
16**

**Assistant
Principal:
Patty Higgs**



BATESVILLE ELEMENTARY SCHOOL



Batesville Elementary School serves approximately 690 students in grades Pre-k through first with LaSherry Irby serving as the school's principal.

Get to know BES

– BES has been a strong supporter of the Go Jim Go! fundraiser, which benefits Le Bonheur Children's Hospital, as the school has raised more than \$8,000 over the past two years.

– The school enjoys community support from various businesses, as BES partners with GE for its employee community service hours, as well as with Batesville Job Corps for internship hours.

– BES hosts Family Reading Night once a month to offer a place for families to read and learn together. With the help of Family Reading Night, BES students have taken more than 75,000 AR tests in the 2015-16 school year.

– The school choir performs at various businesses and functions throughout the year.

– There are 18 teachers with advanced degrees and 18 are National Board Certified.



Batesville Elementary School

110 College Street • Batesville, MS 38606 • 662-563-4596



Principal Profile



Lashunda Hamilton

Principal at BIS since:
2011

Years with SPSD:
18

Years in education field:
18

Assistant Principal:
Carey Allen



BATESVILLE INTERMEDIATE SCHOOL



Batesville Intermediate School serves approximately 650 students in grades second through third with Lashunda Hamilton serving as the school's principal.

Get to know BIS

- 94 percent of third-grade students passed the initial third-grade Reading Summative Assessment. Only 10 of 146 school districts in Mississippi had a higher percentage of students passing the assessment than South Panola School District.

- BIS students have taken and passed more than 120,000 Accelerated Reader quizzes during the 2015-16 school year. 91 percent of second-graders and 90 percent of third-graders have an average above the median score in AR for the 2015-16 school year.

- BIS is one of 63 schools in Mississippi to receive the Project Fit America Grant, which totals \$26,000. During the celebration for receiving this grant, all students released a balloon with the school's health pledge – one of the balloons actually made it to Ontario, Canada.

- Third-grade students participate in Discoveryville in the computer lab once a week where they take part in hands-on activities, experiments and challenging events.

- There are 17 teachers with advanced degrees and eight are National Board Certified.

Batesville Intermediate School

200 College Street • Batesville, MS 38606 • 662-563-7834



Principal Profile



Julia Bainer
Principal at
BMS since:
2012

**Years with
SPSD:**
28

**Years in
education field:**
28

**Assistant
Principal:**
Amy Sutton



BATESVILLE MIDDLE SCHOOL



Batesville Middle School serves approximately 600 students in grades fourth through fifth with Julia Bainer serving as the school's principal.

Get to know BMS

- The school takes part in several fundraisers annually, such as Pennies for Patients, Go Jim Go!, St. Jude Math-a-Thon and Hoops for Heart to name a few.

- BMS fourth-grade teacher Beverly Patton was named 2015-16 SPSD Teacher of the Year.

- The school's Booster Club is involved with meeting the needs of BMS with its academic achievements and extracurricular activities. The BMS Booster Club has rewarded students with parties and special prizes, such as iPads and game systems, for perfect scores for state testing rewards.

- BMS offers several parent involvement opportunities: Meet the Teacher Night, Family Reading Night, reading with students in their class, working during its book fair, working at annual fall festival and field day are just a few of the available opportunities.

- Several reading fair and spelling bee winners represented BMS at the District and Regional level.

- The school holds an Accelerated Reader Reward monthly breakfast with the librarian for students who meet reading goals.

- There are 18 teachers with advanced degrees and two are National Board Certified.

Batesville Middle School

509 Tiger Drive • Batesville, MS 38606 • 662-563-1924



Principal Profile



Jay Cossey
Principal at
Pope since:
2016

**Years with
SPSD:**
First year

**Years in
education field:**
16

**Assistant
Principal:**
Tina Moore



POPE SCHOOL



Pope School serves approximately 530 students in grades K-8 in the southern portion of Panola County. Jay Cossey serves as the school's principal.



Get to know Pope

- 94 percent of third-grade students passed the initial third-grade Reading Summative Assessment. Only 10 of 146 school districts in Mississippi had a higher percentage of students passing the assessment than South Panola School District.

- Pope, along with Batesville Junior High School, received the Champions of Change Award for High Progress by the Mississippi Department of Education in 2015.

- The school offers numerous rewards for teachers and students based on attendance, discipline and academic performance.

- Pope regularly supports the Pennies for Patients and Go Jim Go! fundraisers.

- The Pope Booster Club sponsors the Student and Employee of the Month program with a breakfast each month.

- There are 15 teachers with advanced degrees and 10 are National Board Certified.

Pope School

1110 Main Street • Pope, MS 38658 • 662-563-3732

Principal Profile



Charles Stevenson
Principal at
BJHS since:
2014

**Years with
SPSD:**
2

**Years in
education field:**
8

**Assistant
Principals:**
Rachel Pickett
Rickey Red
Shante' Stutts



BATESVILLE JUNIOR HIGH SCHOOL



Batesville Junior High School serves approximately 820 students in grades sixth through eighth with Charles Stevenson serving as the school's principal.

Get to know BJHS

- Batesville Junior High School, along with Pope School, received the Champions of Change Award for High Progress by the Mississippi Department of Education in 2015.

- In February 2016, the Tiger Robotics team qualified for the Mississippi VEX Middle School State Championship competition where they won the Judges' Award.

- The ICT I program was awarded the Mississippi Program Excellence Award by the International Technology and Engineering Educator Association (ITEEA).

- The Batesville Junior High School Tiger Choir, which consists of students in seventh and eighth grades, received a superior score during the District II Choral Festival Competition. The performance earned the choir a spot in state competition, which is set for April.

- The BJHS Mathcounts team placed first at the Northwest Regional Mathcounts competition to go along with second- and third-place individual performances. The first-place finish earned the team a spot at the state level competition.

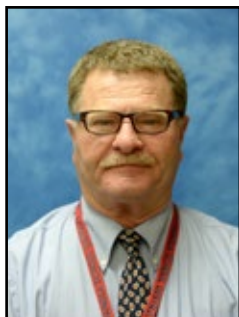
- There are 25 teachers with advanced degrees and six are National Board Certified.

Batesville Junior High School

507 Tiger Drive • Batesville, MS 38606 • 662-563-4503



Principal Profile



Rodney Flowers

**Principal at
SPHS since:**
2015

**Years with
SPSD:**
3

**Years in
education field:**
34

**Assistant
Principal:**
Jason Matthews
David Odom
Dr. Lance Reed



SOUTH PANOLA HIGH SCHOOL



South Panola High School serves approximately 1,150 students in grades ninth through 12th with Rodney Flowers serving as the school's principal.

Get to know SPHS

- SPHS is a comprehensive public high school offering over 120 Carnegie units.

- The Air Force sponsors a four-year JROTC program that is in the top 10 percent of the nation's units.

- The school offers 13 sports programs, and accomplished band and choral programs which routinely earn Superior ratings.

- SPHS has five computer labs and wireless carts that allow any classroom to become a lab.

- The school also offers advanced placement, dual enrollment and accelerated courses, which offers students the chance to earn college credits before leaving high school.

- There are 40 teachers with advanced degrees and eight are National Board Certified.



South Panola High School

601 Tiger Drive • Batesville, MS 38606 • 662-563-4756



CTE Director

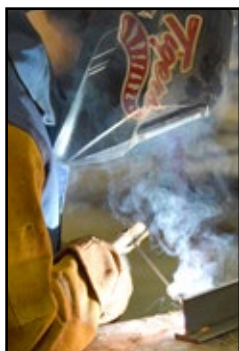


Leslie Busby
SPHS CTE
Director since:
2011

Years with
SPSD:
18

Years in
education field:
20

CTE Counselor:
Shaquita Lathon



CAREER AND TECHNICAL EDUCATION



South Panola High School offers 16 career and technical education programs. The program serves approximately 600 students and Leslie Busby serves as its director.

Career and technical education prepares both youth and adults for a wide range of careers, from registered nurse to computer technician. These careers may require varying levels of education from high school to post-secondary certificates to two- and four-year college degrees.

According to the U.S. Bureau of Labor Statistics, 18 of the 20 fastest growing occupations within the next decade will require career and technical education.



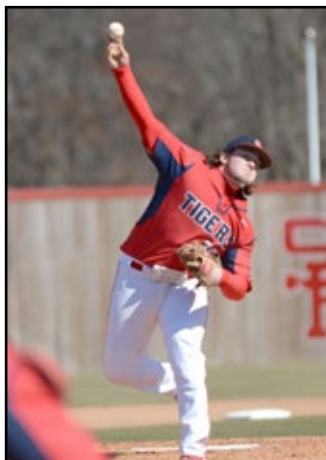
CTE Course Offerings

- STEM
- Nutrition and Wellness
- Family Dynamics
- Concepts of Agriscience
- Science of Ag. Animals
- Science of Ag. Mechanics
- Auto Service Tech I and II
- Construction I
- Carpentry
- Culinary Arts I and II
- Early Childhood Ed. I and II
- Health Sciences I and II
- Horticulture I and II
- Welding I and II
- Career Pathway Experience
- Contemporary Health

South Panola High School Career and Technical Education
601 Tiger Drive • Batesville, MS 38606 • 662-563-4756



SPSD ATHLETICS



The South Panola School District athletic department offers 22 sports teams on the high school level and 14 teams on the junior high school level, including cheerleading on all levels.

Since 2005, the South Panola High School football team has won seven state championships, including a national championship in 2010, while the SPHS fastpitch softball team has claimed two state championships (2007 and 2008).

The baseball and basketball programs also routinely field competitive teams who are prominent in the postseason.



SPSD Athletic Teams

Pope

Basketball
Football
Cheerleading

BJHS

Archery
Baseball
Basketball
Cheerleading
Football
Softball

SPHS

Archery
Baseball
Basketball
Cheerleading
Cross-Country
Football
Golf
Soccer
Softball (slow and fast)
Tennis
Track & Field
Volleyball



CLUBS AND ORGANIZATIONS



Looking to get involved? There are several clubs and organizations offered at the South Panola School District which offer an array of possibilities for student involvement?

Musically inclined? Band and chorus are great options – programs that routinely earn Superior ratings.

Want to impact and shape your school? The student council just may be the right fit for you, or even the D.A.R.E. Program.

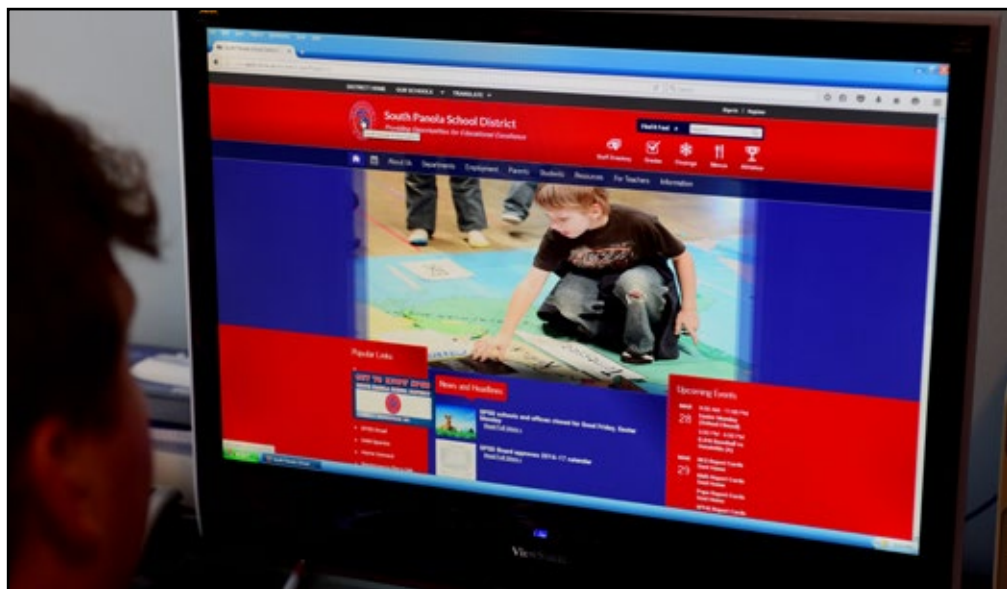
A budding photographer may get their start on the yearbook staff, while the next James Beard Award-Winning Chef is in FCCLA.

There's something for everyone: National Technical Honor Society to Future Farmers of America to 21+ Club to Beta Club and everything in between.





STAYING CONNECTED WITH SPSD ONLINE



The South Panola School District strives to keep parents, students and the community informed of all that is going on within the district.

SPSD releases a variety of information on happenings within the schools and the district through its school website(s), social media pages and SPSP mobile app.

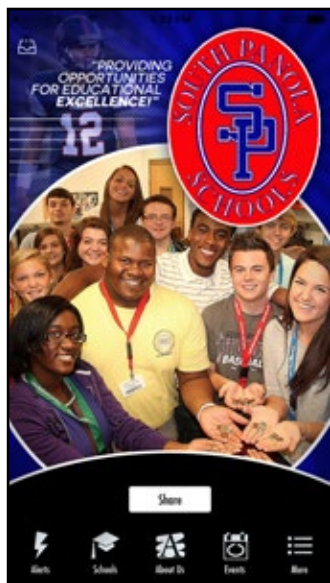
An overhaul of the district's websites was completed in early 2016 to aid in the distribution of happenings at each school.

Parents, and students, may now keep track of homework online, as each certified teacher has his/her own teacher page to post assignments, resources and calendar of events.

In addition to the district webpages, SPSP also makes use of social media with its Facebook pages and Twitter account.

Each SPSP school has its own Facebook page, while at the district level there are Facebook and Twitter pages.

Also recently revamped was the SPSP mobile app, which puts SPSP news and announcements a touch away from any mobile device. Be sure to enable notifications on the SPSP mobile app to ensure the quickest delivery of pertinent information.



BUILDING BLOCKS OF EDUCATION



On the night of July 10, 2015, a fire engulfed the kindergarten wing at Batesville Elementary School.

The blaze destroyed 17 classrooms, the cafeteria and the administrative office.

The school, and the district, were blessed with an outpouring of generous support from near and far to ensure the first day of school started as originally scheduled and that teachers had the necessary supplies for their classrooms.

Construction on the new BES kindergarten wing is currently underway and plans are being made to relocate all kindergarten classrooms to the new building for the 2016-17 school year.

BES is not the only campus in the district with construction projects underway, though.

Construction on the new ninth-grade wing at South Panola High School began in the fall of 2015. The building will house 18-20 classrooms and will be located on the east side of SPSHS. The building, which will keep ninth-graders isolated with students their age the majority of the school day, is set to be open for the start of the 2016-17 school year barring any setbacks in construction.





South Panola School District

209 Boothe Street

Batesville, MS, 38606



www.facebook.com/SouthPanolaSD

@SouthPanolaSD