

# Southern Gear & Machine EQUIPMENT

Speed. Quality. Value.

For 60+ Years

Est. 1957



# Southern Gear & Machine

---

Faster Equipment. Superior Quality.  
Unbeatable Value.

Over the past six years, Southern Gear & Machine has invested nearly one million dollars per year in new equipment that dramatically improves our products, quality, cost, and delivery. We manufacture better gears faster and at less cost than in the past, and it is all done in our own shop, under our control and under our AS 9100 quality system.

We have invested substantially in machines that cover all aspects of gear making, including turning, milling, grinding, and gear cutting/grinding. We have implemented proprietary scheduling software that ensures efficient production with little to no down-time. In addition to our considerable investment in equipment and technology, we continue to be committed to the highest standards within our family of employees. Our talented personnel have countless years of experience exclusively making gears and most have been with our company for more than 25 years. This truly extraordinary combination of equipment, technology, talent, and value distinguishes us from other gear shops, and guarantees you a remarkable customer experience and an exceptional product.

This brochure highlights some of the machines that are on our shop floor and immediately available to produce your gears. You will receive a superior product with a superior customer experience at a superior value—every time. Give us the opportunity to handle your next project and you will not be disappointed.



## MITSUBISHI GE15A CNC GEAR HOBBER

Capacity 6 Pitch Coarsest Pitch  
6" Max. Pitch Diameter



## MITSUBISHI SE25A CNC GEAR SHAPER

Capacity 4 Pitch Coarsest Pitch  
10" Max. Pitch Diameter  
2.5" Face Width



## MITSUBISHI SD25 GEAR SHAPER

Capacity 4 Pitch Coarsest Pitch  
10" Max. Pitch Diameter  
2.5" Face Width



MITSUBISHI ST40  
CNC GEAR SHAPER



KOEPFER 160 CNC GEAR HOBBER





FELLOWS #3  
FANUC CNC  
GEAR SHAPER



## MITSUBISHI GD20 CNC GEAR HOBBER

4 Pitch Coarsest Pitch  
8" Max. Pitch Diameter



**FELLOWS FG 32  
FACE GEAR  
GEAR SHAPER**

Capacity to 30 inches



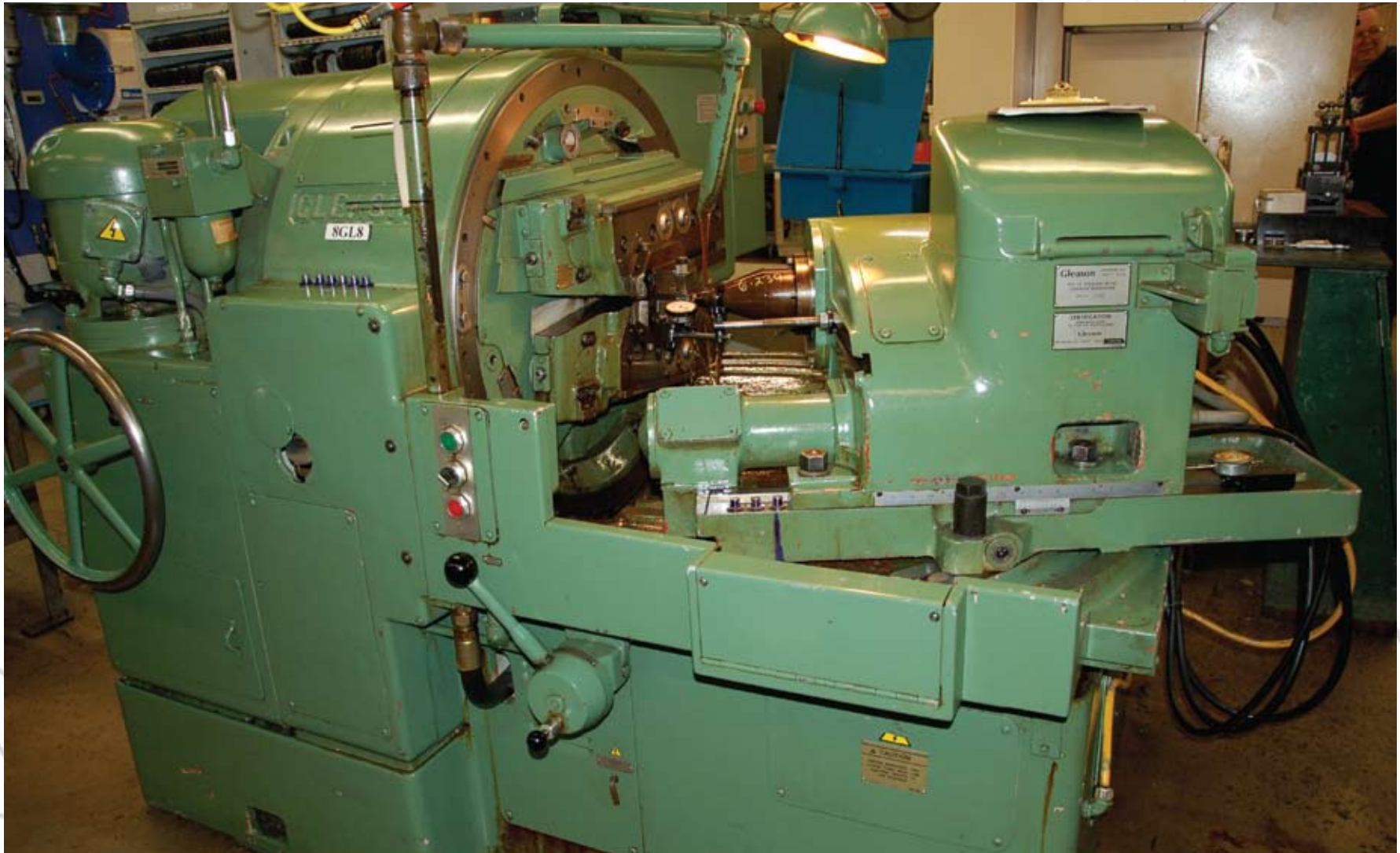
## FELLOWS 10-4 WITH FANUC CNC CONTROL

Capacity 10" Max. Pitch  
Diameter, 4" Face Width  
Has Face Gear Capability



## GLEASON #104 CONIFLEX BEVEL GENERATOR

Capacity 9" Pitch Diameter



## GLEASON CONIFLEX #14 TWO TOOL BEVEL GENERATOR

Capacity 20" Pitch Diameter



## SUPERTEC GRINDMASTER 45

3 Axis Complex CNC Internal and External O.D. Grinder  
Capacity .08 to 16" Diameter



MITSUBISHI ZE40A PROFILE AND THREADED WHEEL GRINDER





TOYODA GL3S  
CNC O.D. GRINDER



## GLEASON TAG 400 GEAR GRINDER

Capacity 15.74 inches Diameter  
Grinds Gears to AGMA Quality 15



## TOYODA CNC O.D. GRINDER

8" O.D. x 20" Long Capacity  
With Auto Gaging



## OKAMOTO CNC O.D. GRINDER

Capacity 8" O.D. x 16" Long



## SUPERTEC STP-618

3 Axis Automatic  
Surface Grinder  
with PLC Control and  
.00005 Micro Down Feed



## LEADWELL V-60 CNC MILLING MACHINE WITH 4TH AXIS ROTARY TABLE

Capacity 30" x 60" Table



**KITAMURA SPARK CHANGER MYCENTER 2X1F CNC MILLING MACHINE  
WITH PALLET CHANGER**

Capacity 14" x 22" Table



KITAMURA  
MYCENTER 3X1F  
CNC MILLING  
MACHINE

Capacity 18" X 36" Table





KITAMURA MYCENTER 4XD CNC MILLING MACHINE



**MAZAK VARIAXIS i-500 5 AXIS CNC MILLING MACHINE**



FANUC ROBOCUT  
MODEL C400iA  
EDM MACHINE



BROWN & SHARPE  
SF 454 CMM



SPERONI MAGIS400  
TOOL SETTER



SUNNEN HONE  
ML 5000  
WITH  
AUTO STROKING  
AND GAGING



DeHOFF GUN DRILL  
TWIN SPINDLE

1" Diameter X 18" Long Capacity



SAMSUNG SL25 ASY CNC LATHE WITH LIVE TOOLING  
8" Chuck



SAMSUNG SL30 CNC LATHE

12" Chuck





## MIYANO BNC 34 CNC BAR FEED LATHE

Capacity to 1 1/8 Diameter and Can Also Chuck Parts



**DOOSAN LYNX 220 CNC LATHE  
WITH LIVE SPINDLE FOR SECONDARY OPERATIONS**

6" Chuck Capacity  
Has 2" Diameter Bar Feed



## DOOSAN S280N CNC LATHE

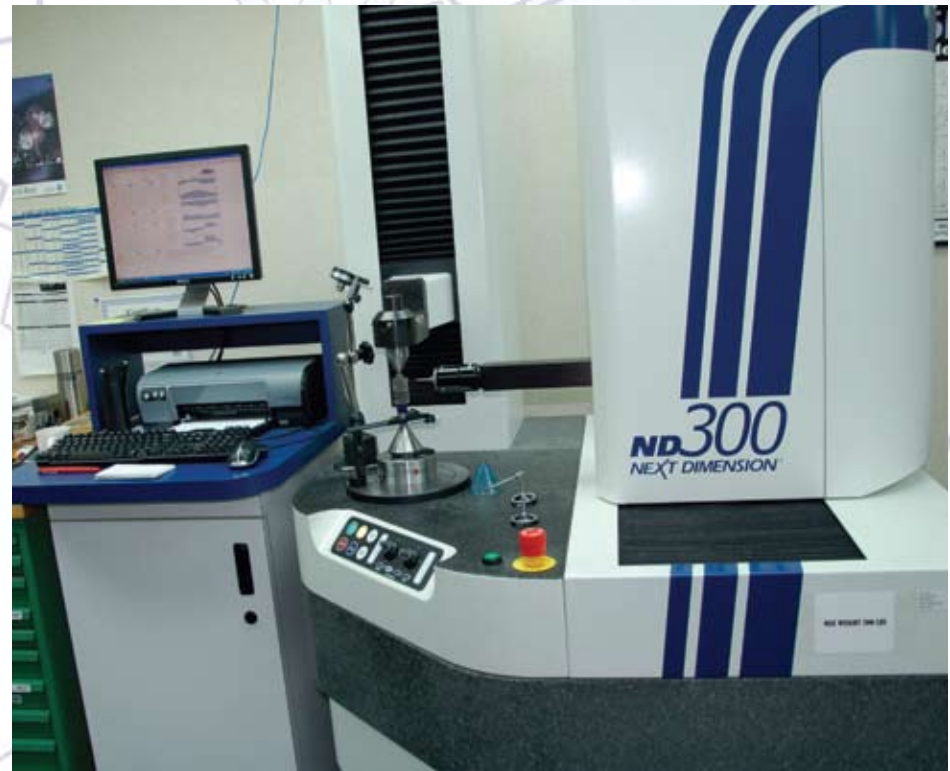
Capacity 8" Chuck X 9" Long



DOOSAN LYNX 220 LSYC



BROWN & SHARPE  
CNC Co-ORDINATE  
MEASURING MACHINE WITH  
PC DEMIS SOFTWARE



PECO ND 300 CNC  
GEAR QUALITY ANALYZER

# Southern Gear & Machine Equipment List

## GEAR CUTTING

- 1 Mitsubishi ST40 Gear Shaper
- 1 Mitsubishi SE25A CNC Gear Shaper
- 1 Mitsubishi SD 25 CNC Gear Shaper
- 3 Fellows CNC 10-4 Gear Shapers
- 2 Fellows CNC 10-4 with Face Gear Attachment
- 2 Fellows FG 32 Face Gear Shapers
- 2 Fellows #3 FANUC CNC Gear Shapers
- 1 Fellows 'Z' Horizontal Gear Shaper
- 1 Fellows #36 Gear Shaper
- 1 Mitsubishi GE 15A CNC Gear Hobber
- 1 Mitsubishi GD 20 CNC Gear Hobber
- 2 54" Capacity TOS Vertical Gear Hobbers
- 1 72" Capacity TOS Vertical Gear Hobber
- 3 16-16 Barber Colman Multicycle Hobbers
- 1 16-36 Barber Colman Long Bed Hobber
- 1 Koepfer 160 CNC Gear Hobber
- 4 6-10 Barber Colman Hobbers
- 3 Mikron #79 Hobbers
- 4 Gauthier Gear Hobbers
- 2 Gleason 104 Coniflex Bevel Generator
- 2 Gleason 2A Coniflex Bevel Generators
- 3 Gleason #14 Coniflex Bevel Generators
- 2 Fellows 4" Gear Shavers
- 1 Fellows 12" Gear Shaver
- 1 Redin Deburring Machine
- 1 OF71 TOS Gear Hobber

## GEAR GRINDING

- 1 Mitsubishi ZE40A Profile and Threaded Wheel Grinder
- 1 Gleason Tag 400 Gear Grinder
- 1 Reishauer NZA Gear Grinders

## GUN DRILLING

- 1 Dehoff Gun Drill 1" X 36"

## CNC MILLING

- 1 Kitamura Mycenter 2XIFSP with Pallet Changer
- 1 Kitamura Mycenter 3XIF CNC Mill
- 1 Kitamura Mycenter 4XD CNC Mill
- 1 Leadwell V601 CNC Mill
- 1 Leadwell V40 CNC Mill
- 1 Leadwell MCV-O CNC Mill
- 1 Leadwell MCV-610 CNC Mill
- 1 Brother CNC Tapping Machine
- 1 Mazak Variaxis 5 Axis CNC Mill

## CNC TURNING

- 1 Bullard CNC Lathe 36" Capacity with FANUC Control
- 1 Mazak QT 250 CNC Lathe
- 1 Samsung CNC Lathe SL 30 12" Chuck
- 2 Samsung CNC Lathe SL-25 ASY with Y-Axis and Sub Spindle
- 2 Doosan Lynx 8" Chucks
- 1 Doosan 12" Chuck
- 1 Miyano BNC 34 CS CNC Lathe with Bar Feed
- 1 Daewoo Lynx 220/ Live tooling
- 1 Mazak Nexus 2 CNC Lathe
- 2 Doosan LYNX 220 LSYC

## MANUAL TURNING

- 1 Summit Engine Lathe 34" X 120"
- 3 Hardinge Tool Room Lathes
- 1 Hardinge Speed Lathe
- 1 Meuser Engine Lathe
- 3 Heald Boromatics
- 1 Bullard 54" VTL
- 1 Harrison M40 Engine Lathe
- 1 LION Model 20 20" X 40" Lathe

## MANUAL MILLING

- 6 Bridgeports with Readouts & Power Feed
- 2 Radial Arm Drills
- 1 Arboga Floor Drill

## GRINDING & HONING

- 1 SUPERTEC CNC ID & OD Face Grinder
- 1 Okomoto OGM 8-20 CNC Grinder
- 1 Toyoda GE4 CNC O.D. Grinder
- 1 Toyoda GL3S CNC O.D. Grinder
- 2 Sharp 12" X 24" CNC Grinder
- 1 Kikinda 14" X 49" Cylindrical Grinder
- 1 Tschudin HT G310 Grinder
- 1 Myford O.D. Grinders 6" X 18"
- 2 Heald Internal Grinders
- 1 Ko Lee Cutter Grinder
- 1 Chevalier Surface Grinder
- 1 Sunnen Hone
- 1 Sunnen ML-5000 Hone
- 1 Spit Fire Lap
- 1 Blanchard Grinder 36" Capacity Misc. Hob, Tool & Cutter Grinders
- 1 Utma LC 35 NC 4 Hob Sharpener
- 1 Bryant Technica Center Hole Grinder
- 1 SUPERTEC Auto Surface Grinder

## THREAD MILLING, THREAD GRINDING, BROACHING & SAWING

- 1 Pratt & Witney 6" X 60" Thread Miller
- 1 J&L 4" X 12" Thread Grinder
- 1 J&L 12" X 45" Thread Grinder
- 1 Lapoint Hydraulic Broach
- 2 DoAll 16" Auto Horizontal Band Saws
- 1 Roll-in Band Saw
- 1 ACME Vertical Broach

## INSPECTION

- 1 Peco ND 300 CNC Gear Inspection Computer Gage Control
- 3 Brown & Sharp CNC CMM's
- Sheffield CNC CMM
- Complete Inspection Facilities
- Mikes to 36 inches
- Certified Gage Blocks & Tools
- Red Line Chart Capabilities
- Certified Master Gears
- Spline and Thread Gages
- Granite Surface Plates
- Involute Chart Recorder
- 30 Gear Testers
- Brown & Sharpe Microhite With Printer Inspection System to Mil-145208A
- 2 Deltronic Optical Comparators
- Gage Talker SPC Systems
- #13 Gleason Bevel Checker
- 3 #2 Gleason Bevel Checkers
- 2 #6 Gleason Bevel Checkers
- 24 H Fellows Lead Checker
- 24 M Fellows Involute Checker
- J&L 30" Comparator
- 2 Wilson Hardness Checkers
- 1 Vari-Roll Automatic Gear Analyzing System
- 1 Vari-Roll Composite Gear Tester

## EDM

- 1 EDM Fanuc Robocut Model C400iA





**60+ YEARS ON THE CUTTING EDGE**

**SOUTHERN GEAR & MACHINE, INC.**

3685 N.W. 106 Street Miami, Florida 33147

Phone: (305) 691-6300 Toll Free: (800) 248-5152

Fax: (305) 696-3576

Website: [www.southerngear.net](http://www.southerngear.net)

Email: [sales@southerngear.net](mailto:sales@southerngear.net)