



*Special edition POWER - GEN*

# Heavyweight News

*from Sarens*

Special edition POWER - GEN • June 2010 • [www.sarens.com](http://www.sarens.com)

Dear Reader,

Germany pioneered in 2006 the building of a new generation of coal and gas fired power plants.

The nuclear era is also being opened and the operational capabilities of existing nuclear plants are being extended by exchanging components.

In recent years wind energy has been developed by the erection of wind turbines, this activity continues to expand.

In this special issue we are proud to present our references in the Power Generation Market.

Our sales team is also present at this exhibition and is at your disposal for further information.

Hendrik Sarens  
Director Heavy Lift Department

## Power Plants



Location : Olkiluoto III - Finland  
Equipment used : PC 9600

The Sarens Group was active for almost 2 years providing lifting services for heavy lift items to be installed in the Nuclear Power Plant reactor area.



Location: Datteln - Germany  
Equipment used: CC 8800-1; LR 1750; CC 2800-1; CC 2400-1;  
18 axle lines SPMT's

In May 2008 the first support of the new power station was built in Datteln. Sarens supplied a brand-new CC 8800-1, equipped with 108m main boom and 60m jib. This coal fired power station of 1.065 MW will be operational in 2011.

Sarens installed steel & components.



# Power Plants in Germany



Location: **Moorburg** – Germany  
 Equipment used: CC 2500-1; CC 2400-1 (installation of concrete pipes);  
 CC 6800 (installation of steel and fiber pipe components);  
 18 axle lines SPMT's



Location: **Karlsruhe (RDK8)** – Germany  
 Equipment used : CC 6800

Installation of steel for a boiler house.

Location : **KW Neurath Block F & G** (Grevenbroich) - Germany  
 Equipment used : 2 x LR1600/2; 4 x CC2800/1; 2 x LR1350/1;  
 SCX 2800/2; SCX 2500; LR 1300;  
 3 x 18 and 1 x 10 axle lines SPMT's

This power station is one of the biggest investment projects at this time in Germany.





Location : **Maasvlakte** – The Netherlands  
 Equipment used : PC 9600; LR 1750; LR 1600-2; hydraulic cranes

MPP3 Project - Maasvlakte II  
 Installation of steel & components



Location : **T-Power Tessenderlo** - Belgium  
 Equipment used : Sennebogen 5500; telescopic cranes from 40t to 700t ; tele Skyworkers

Sarens BE started in October 2009 the erection of the Heat Recovery Steam Generator (HRSG) for a 400 MW Combined Cycle Power Plant.  
 Duration of the project : 32 weeks  
 Total man-hours : 25.000 for this project  
 Sarens BE is responsible for:

- All lifting activities
- Erection of the steel structure (steel portals 36m high)
- Erection of the casing / inlet duct
- Erection of the stack (60m high) and outlet duct
- Erection of the heat exchanger surfaces (114 harps)
- Installation of the mechanical equipment drums & vessels (60t)
- Welding assembly
- Internal insulation, touch-up painting
- Scaffolding
- Project management

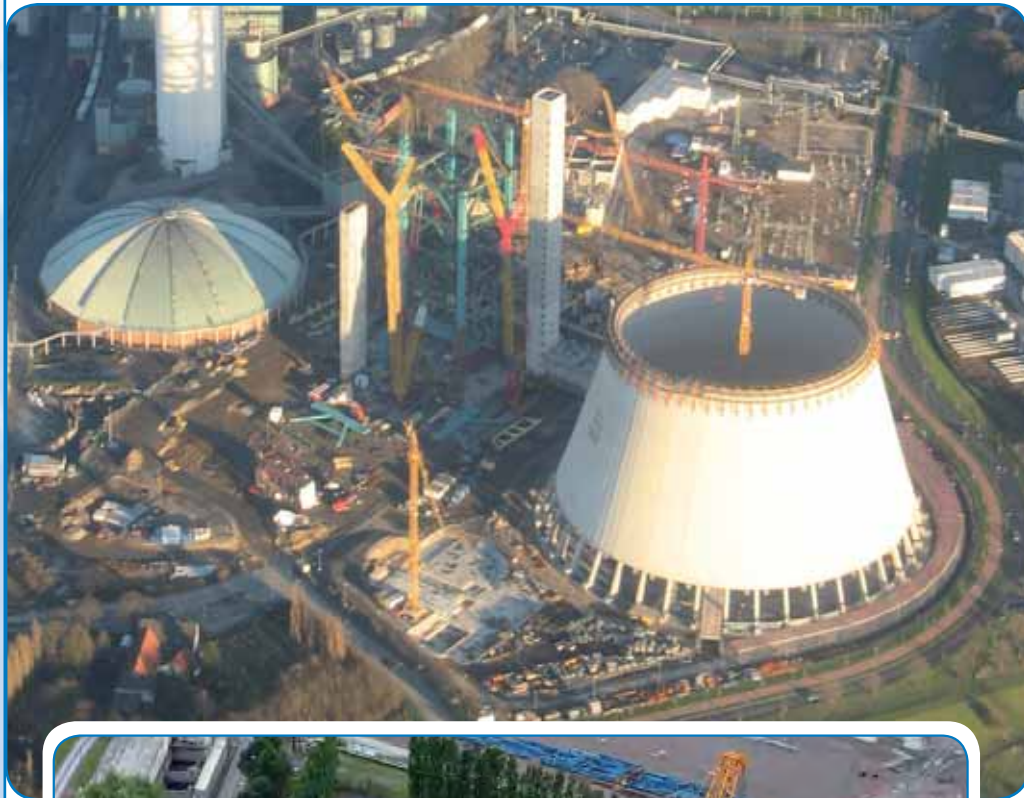
Location : **Hamm Westfalen** - Germany  
 Equipment used : CC 6800

Installation of steel for a boiler house.



Location : **Walsum (Duisburg Block 10)** - Germany  
 Equipment used : 2 x LR 1400/2; LR 1750; 18 axle lines SPMT's

Installation of steel & components.  
 The construction of a modern coal-fired 750 MW power generating station started in November 2006.  
 This power station started up in the beginning of 2010.





Location: Belchatów - Poland  
 Equipment: CC 8800-1; 2x CC 2800-1; CC 2500-1; SCX 2800-2;  
 LTM 1225; LTM 1160-2; ATF 100-5; AC 100;  
 tower cranes Linden & Peiner; 18 axle lines SPMT's

As well as the installation of general plant equipment, Sarens is building a cooling tower and a new block for the 833 MW power plant.



Location : Maritza - Bulgaria  
 Equipment : 2 x LR 1350; 4 hydraulic cranes



### Other references:

Location : Sines - Portugal  
 Equipment used : 2 x CC 2500-1

Location : Ledvice - Czech Republic  
 Equipment used : CC 8800-1; CC 2800-1

Location : Wilhelmshaven - Germany  
 Equipment used : LR 1750; LR 1600-2

Location : Rotterdam – The Netherlands  
 Equipment used : LR 1750; LR 1600-2; LR 1350;  
 hydraulic cranes

# From factory to foundation



Location : Sidi Krir - Egypt  
Equipment used : Sarlift 2500; Sarskid 280

Installation of a generator / turbine.



Location : Cairo West – Egypt.  
Equipment used : 4 x Strand Jacks SWL100t; Sarskid 280; turning table

Installation of a stator.



Location : Illinois - USA  
Equipment used : 2 x 12 axle lines SPMT's

Installation of a condenser.



Location : San Onofre - USA  
Equipment used : 2 x 12 axle lines SPMT's

Installation of a steam generator.

# Wind Turbines



Location :  
Thornton Bank – Ostend - Zeebrugge - Belgium

Equipment used :  
Off shore : LR 1750; TC 1100  
On shore : LG 1550; CC 2800; SPMT's

Sarens installed the first 6 turbines (5 MW each) on the Thornton sandbank in the North Sea. SPMT's transported the concrete foundation blocks (3.000t each - 42m high) from the yard to the quay. Sarens put a 750t crane on top of the SMLT (Sarens Multi Lift Tower – height: 40m) to assemble the steel towers and turbine parts on the foundations.



## Colophon

### Headoffice

Sarens NV  
Autoweg 10 • B-1861 Wolvertem  
T: +32 52 319 319 • F: +32 52 319 329  
info@sarens.com  
www.sarens.com

### Co-ordination

Veerle De Cuyper

### Editors

Dirk Verwimp, Gerrit Zenner, Hendrik Sarens,  
Jan Dhoop, Johan Goossens, Kristof Van  
Hoecke, Peter Libert, Steven Sarens

### Graphic design

Drukkerij Verspecht +32 52 30 95 51



Location : IJmuiden – The Netherlands  
Equipment : Off shore : TC 3200  
On shore : CC 2800; KH 850

Sarens performed all offshore lifts for the erection of the turbines and all on-shore logistics operations for the "Q7 wind park" (60 wind turbines of each 2 MW).