



Specials & Custom Products

Krueger receives requests for customized or special air distribution solutions regularly.

Our Engineering team is always ready to rise to such challenges. In coordination with our local Representative, their customer, and other Krueger support staff, we will engineer a viable solution that will satisfy all necessary building and occupant requirements.

Whether it is a request to modify an existing product or develop a new product, you can rest assured that Krueger will be there from design and development through to the final installation to ensure your project is successful.

New Products & Updates

While we strive to bring you the latest product information in printed form, we are constantly improving, changing, and adding product to our offering.

Learn about new products and find more in-depth information on any model by viewing our Product Catalog on the web at www.krueger-hvac.com. We also offer a range of tools and other information-rich areas to help you successfully design your next air distribution application.

For technical assistance or application-related questions, we encourage you to contact your local Krueger Representative or simply email us at kruegerinfo@krueger-hvac.com.

Product Gallery

In addition to our Product Index in the back of each volume, you will find a Product Gallery on the following pages to help you both locate products within the Product Catalog as well as assist you in the process of learning about Krueger's many air distribution product solutions.

Product Gallery Page Reference

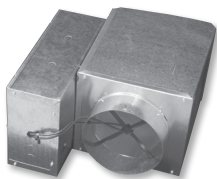
- 20 Terminal Units
- 20 Underfloor Products
- 21 Fan Coils
- 22 Square / Rectangular Ceiling Diffusers
- 24 Linear Slot Diffusers
- 24 Plenum Slot Diffusers
- 24 Round Diffusers
- 25 Air Nozzles and Round Grilles
- 25 Critical Room Solutions
- 26 Displacement Ventilation
- 26 Chilled Beams
- 27 Supply and Return Grilles and Registers
- 28 Security Grilles
- 28 Industrial Grilles
- 28 Duct Mounted Grilles
- 29 Stainless Steel Grilles and Registers

OUR PRODUCTS

Terminal Units and Underfloor Products

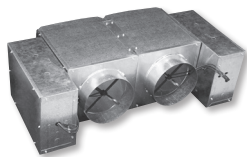
LMHS

Single Duct Terminal Unit
A2-3



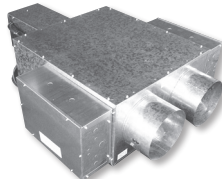
LMHD

Variable Volume
Dual Duct Terminal Unit
C2-3



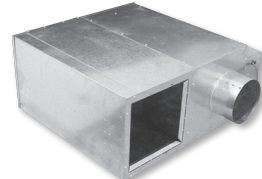
LMHDT

Variable/Constant Volume
Dual Duct Terminal Unit
C2-3



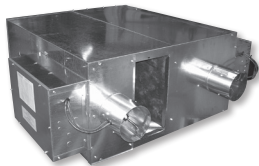
KQFS / KQFP

Ultra Quiet, Series/Parallel
Fan Powered Terminal Unit
B2-6 / B2-28



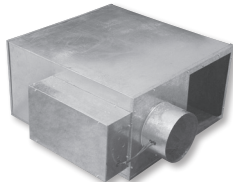
KQFS-FA

Ultra Quiet, Series
Fresh Air Fan Powered
Terminal Unit B2-19



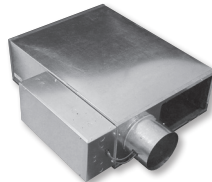
QFC/QFV

Series/Parallel Fan
Powered Terminal Unit
B2-47 / B2-68



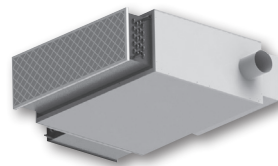
KLPS / KLPP

Low Profile, Series/Parallel
Fan Powered Terminal Unit
B2-86 / B2-116



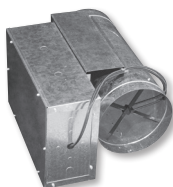
KLPS-D

Low Profile, Series
DOAS Fan Powered
Terminal Unit B2-102



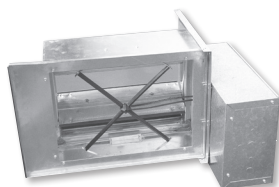
RVE

Retrofit Terminal Unit
D2-3



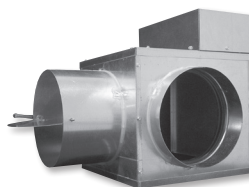
SVE

Slide-in Retrofit Terminal Unit
D2-11



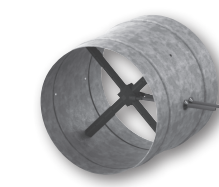
KL B

Bypass Terminal Unit
D2-20



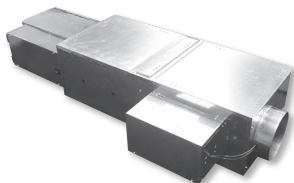
KMS

Krueger Measuring Station
D2-25



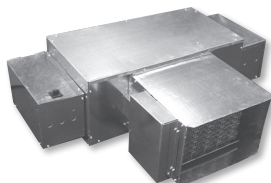
KUFS

Underfloor Series Fan
Powered Terminal Unit
E3-22



KBF

Underfloor Booster
Fan Powered Terminal Unit
E3-35



KUFM

Mixing Fan Powered
Terminal Unit
E3-46



FPD-R, FPD-D / V / HC

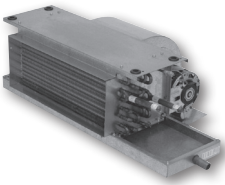
Helical Slot Diffuser &
Grille Duct Connection
E3-15 / E3-18



Fan Coils

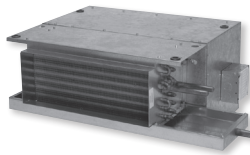
HFH

Horizontal Standard,
Concealed Ceiling Fan Coil
E2-4



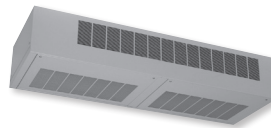
HFHP

Horizontal Standard, Concealed
with Plenum Fan Coil
E2-7



HFEC

Horizontal Standard,
Exposed Cabinet Fan Coil
E2-10



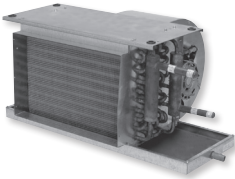
HFI

Horizontal Standard,
Recessed Ceiling Fan Coil
E2-13



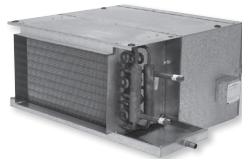
HGH

Horizontal High-Capacity,
Concealed Ceiling Fan Coil
E2-18



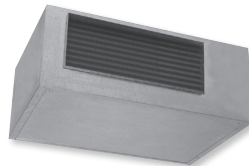
HGHP

Horizontal High-Capacity,
Concealed with Plenum Fan Coil
E2-22



HGEC

Horizontal High-Capacity,
Exposed Cabinet Fan Coil
E2-26



VFH

Vertical Standard,
Concealed Floor Fan Coil
E2-32



VFFC

Vertical Standard,
Flat Top Cabinet Fan Coil
E2-35



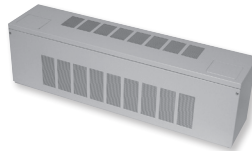
VFSC

Vertical Standard,
Slant Top Cabinet Fan Coil
E2-38



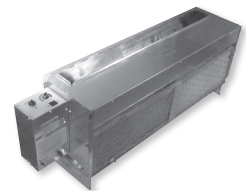
VFLC

Vertical Standard,
Low Profile Fan Coil
E2-41



VFLH

Vertical Standard, Low Profile,
Concealed Fan Coil
E2-44



VGH

Vertical High-Capacity,
Concealed Closet Fan Coil
E2-50



VPH

Vertical Stack, Recessed
Hi-Rise Fan Coil
E2-56



VPHP / VPHS

Vertical Stack, Recessed
Primary / Secondary Fan Coil
E2-60 / E2-64



VIP / VIPS

Vertical Stack, Recessed
Primary & Secondary Twin
Pack Fan Coil E2-68



OUR PRODUCTS

Square/Rectangular Ceiling Diffusers

PRISM

Arcuate Face with Appliqué,
Architectural Ceiling Diffuser
A1-3



PLQ / 5PLQ

Square Plaque Face,
Architectural Ceiling Diffuser
A1-12



PLQR

Round Plaque Face,
Architectural Ceiling Diffuser
A1-12



PLQLT / 5PLQLT

Square Plaque Face,
Low Temp. Diffuser
A1-14



PLQIMP

Square Plaque Face, Integrated
Multi-port Induction Ring
A1-28



VPQ

Square Plaque Face,
VAV Diffuser
A3-6



KSD

Swirl Face, Architectural
Ceiling Diffuser
A1-34



1400 Series

Louvered 4-Cone
Ceiling Diffuser
B1-4



1450 Series

Louvered 3-Cone
Ceiling Diffuser
B1-23



SH Series

Flush Face Louvered
Ceiling Diffuser
B1-35



SHV Series

Flush Face Louvered Ceiling
Diffuser with Deflector Vanes
B1-50



SHPC Series

Flush Face Louvered Ceiling
Diffuser with Pattern Controllers
B1-59



SHFB Series

Flush Face Louvered Ceiling
Diffuser with Rigid Fiberglass
Backpan B1-99



5SH/CAD Series

Flush Face Louvered Ceiling
Diffuser with Center Downblow
B1-105



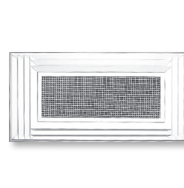
SHRPLQ Series

Flush Face Louvered
Diffuser with Center Plaque
B1-113



7000

Combination Supply
and Return Diffuser
B1-123



Square/Rectangular Ceiling Diffusers

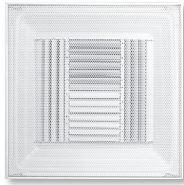
6100 Series

Stamped Core,
Perforated Ceiling Diffuser
C1-4



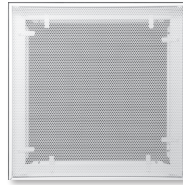
6200 Series

Curved Blade,
Perforated Ceiling Diffuser
C1-12



6290F

Perforated Face Return
with Filter Frame
C1-12



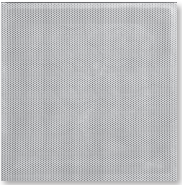
6300 Series

Perforated Ceiling Diffuser with
Rigid Fiberglass Backpan
C1-45



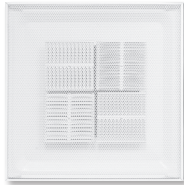
6390 Series

Perforated Return with
Fiberglass Backpan
C1-45



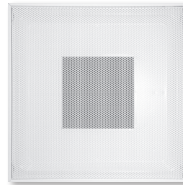
6400 Series

Face Mounted Deflectors,
Perforated Ceiling Diffuser
C1-52



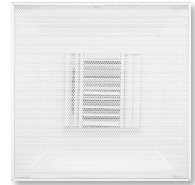
6490 Series

Square Neck,
Perforated Return
C1-52



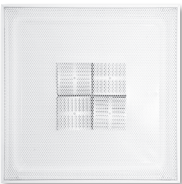
6500 Series

Curved Blade,
Perforated Ceiling Diffuser
C1-12



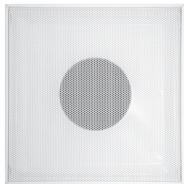
6600 Series

Face Mounted Deflectors,
Perforated Ceiling Diffuser
C1-52



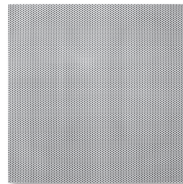
6690 Series

Round Neck,
Perforated Return
C1-52



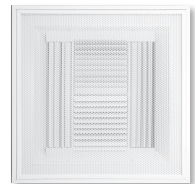
6790 Series

Perforated Return Panel,
No Backpan
C1-97



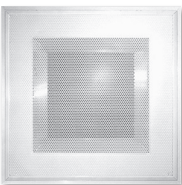
1100 Series

Architectural, Curved Blade
Perforated Ceiling Diffuser
C1-101



1190 Series

Architectural, Aluminum
Frame, Perforated Return
C1-101



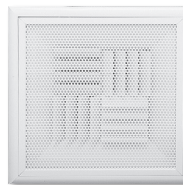
1240 Series

Modular Core
Ceiling Diffuser
D1-3



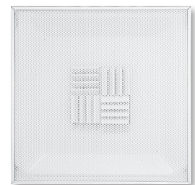
1240P Series

Modular Core Ceiling
Diffuser with Perforated Face
D1-13



1240PE Series

Modular Core Ceiling
Diffuser with Perforated Face
D1-13



OUR PRODUCTS

Linear Slot, Plenum Slot, and Round Diffusers

DesignFlo® (DFL)

Architectural Linear
Slot Diffuser
E1-3



DFP

Plenum Boot for DesignFlo®
Linear Slot Diffuser
E1-11



1900

Linear Slot Diffuser
E1-40



1900BOOT

Plenum Boot for 1900
Linear Slot Diffuser
E1-40



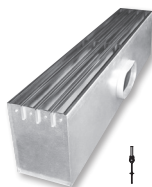
1900SQ Series

Square, Linear Slot Diffuser
E1-77



PTBS Series

Gasketed Aluminum Blade,
Plenum Slot Diffuser
F1-3



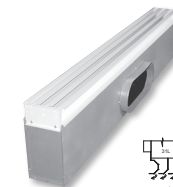
PTBA Series

Ice Tong, Plenum Slot Diffuser
F1-28



PTBT Series

Fixed, Extruded Aluminum
Blades, Plenum Slot Diffuse
F1-42



PTBSS Series

Curved Blade, Plenum
Slot Diffuser
F1-52



PTBR Series

Plenum Slot Return
F1-80



PFTBS

Plenum Slot Diffuser
with Fire Damper
F1-52



PFTBR

Plenum Slot Return
with Fire Damper
F1-80



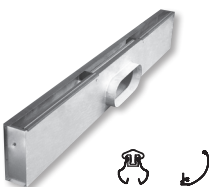
PTBSC Series

Curved Blade, Plenum
Slot Diffuser
F1-68



PTBSCDB Series

Curved Blade with Downblow,
Plenum Slot Diffuser
F1-68



RM / RA Series

Round Cone
Ceiling Diffuser
G1-3



RM2PLQ / RM4PLQ

Round Plaque
Ceiling Diffuser
G1-17



Round Diffusers, Air Nozzles & Critical Room Solutions

R1DBR10

Ring Operated Center Downblow,
Round Ceiling Diffuser
G1-23



RPN Series

Round Pukah Nozzles
H1-3



RPNLP

Round Pukah Nozzle
for Lay-In T-Bar
H1-7



RPN2P / RPN4P Series

Two or Four Round Pukah
Nozzles in Panel
H1-6



CRN Series

Concentric Ring Nozzle
H1-17



CRNLP Series

Concentric Ring Nozzle
for Lay-In T-Bar
H1-22



CRNP Series

Concentric Ring
Nozzle in Panel
H1-20



R580 / R5880 Series

Round Single/Double
Deflection Supply Grille
H1-31



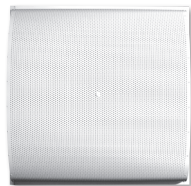
REGC5 Series

Round Egg-crate Grille
H1-41



TAD

Radial Face,
Critical Room Diffuser
B3-3



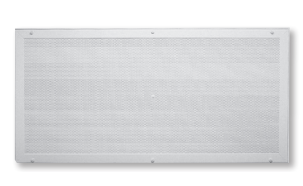
RADIAFLO™

Flush Face, Radial
Critical Room Diffuser
B3-19



5000

Laminar Flow Panel
B3-47



5000HF

Laminar Flow Panel
with HEPA Filter Capability
B3-47



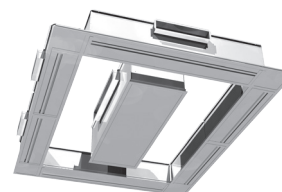
STERILFLO®

Operating Room
Particulate Control System
B3-29



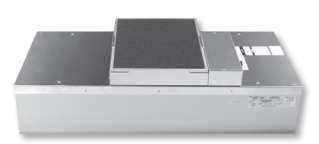
STERILFLEX™

Modular Operating Room
Particulate Control System
B3-39



CRFF Series

Fan Filter Units
with HEPA Filter
B3-58



OUR PRODUCTS

Displacement Ventilation & Chilled Beams

AFA
Rectangular Low
Velocity Supply Unit
D3-9



AFB
U-Shaped Low
Velocity Supply Unit
D3-14



AFC
Round Low Velocity
Supply Unit
D3-19



AFD
Rounded Triangle Low
Velocity Supply Unit
D3-24



AFE
Flat-Faced Low
Velocity Supply Unit
D3-29



AFF
Half Flat Oval Low
Velocity Supply Unit
D3-33



AFP
Half Round Low
Velocity Supply Unit
D3-38



AFQ
Corner-Round Low
Velocity Supply Unit
D3-42



ABC
Active Sustainable
Chilled Beam
C3-18



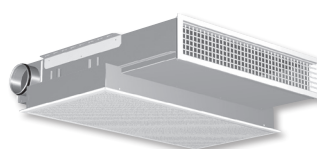
ASB
Active High Capacity,
Chilled Beam
C3-19



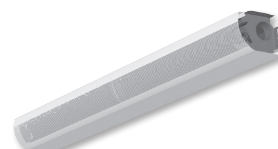
ABD
Active 12" Wide Sustainable
Chilled Beam
C3-20



AHH
Active Bulkhead
Chilled Beam
C3-21



ABH
Active Corner Mounted,
Exposed Chilled Beam
C3-22



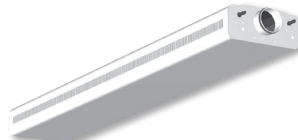
ADC
Active, Adaptable
Chilled Beam
C3-29



AHC
Active, Adaptable,
High Capacity Chilled Beam
C3-31



ACE
Active, Adaptable,
Exposed Chilled Beam
C3-33



APT / APA
Passive
Chilled Beams
C3-39 / C3-38

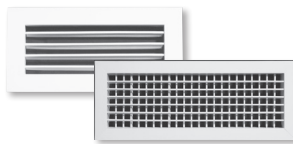


Supply and Return Grilles & Registers

180 Series
Curved Blade
Supply Grille
I1-3



80 / 880 Series
Single/Double Deflection,
Supply Grille, 3/4" Blade Spacing
I1-25



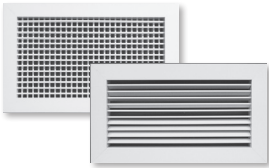
480 / 4880 Series
Heavy Duty, Single/Double
Deflection Supply Grille
1/2" Blade Spacing I1-25



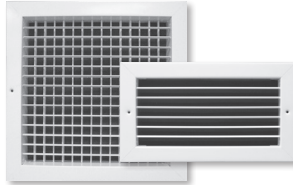
800 / 5800 Series
Gang Operated Rear
Louver Supply Grille,
3/4" Blade Spacing I1-25



585 / 5885 Series
Single/Double Deflection
Aluminum Supply Grille,
1/2" Blade Spacing I1-25



AF80 / AF880 Series
Single/Double Deflection Airfoil
Supply Grille, 3/4" Blade Spacing
I1-47



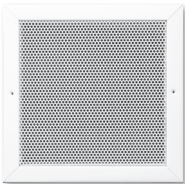
5815
Aluminum, Fixed Blade Supply
Grille with Removable Core
I1-64



S80 / S85 Series
Fixed Deflection Return Grille,
1/2" or 3/4" Blade Spacing
J1-3



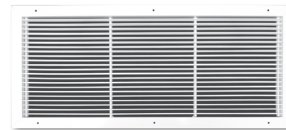
S80P
Perforated
Return Grille
J1-26



S480 / S5480 Series
Heavy Duty, Fixed Deflection
Return Grille, 1/2" or 3/8"
Blade Spacing J1-35



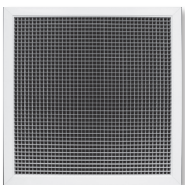
AFS580 / AFS585
Architectural, Fixed Blade
Return Grille, 1/2" or 3/4"
Blade Spacing J1-60



AFCS80 / AFCS85
Architectural, Curved Blade
Return Grille, 1/2" or 3/4"
Blade Spacing J1-80



EG / EGC Series
Egg-crate
Return Grille
J1-94



5810
Aluminum, Fixed Blade
Return Grille with
Removable Core J1-116



1500/1800 & 1600/1850
Linear Bar Supply Grille for
Ceiling, Sidewall, Sill, or Floor
K1-3 / K1-23



1700 Series
Linear Louvered
Supply Grille
K1-43



OUR PRODUCTS

Security, Industrial, and Duct Mounted Grilles & Registers

1310

Perforated Face
Security Grille
L1-3



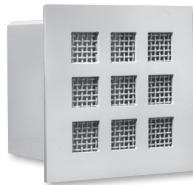
13SD

Suicide Deterrent
Security Grille
L1-13



1320

Wire Mesh Security Grille
L1-22



1330

Heavy Duty Bar Grille
with Wire Mesh
L1-31



1340

Louvered Diffuser with
Lattice Face
L1-40



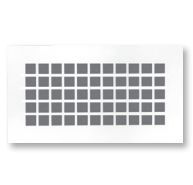
51350

Heavy Duty Aluminum
Bar Grille
L1-45



1380 / 51380

Lattice or Perforated Face
Security Grille
L1-54



1390 / 1390F Series

Security Bars with or
without Welded Sleeve
L1-57



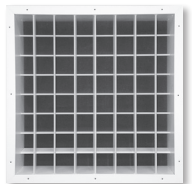
680

Single Deflection
Industrial Grille
M1-3



6880

Double Deflection
Industrial Grille
M1-3



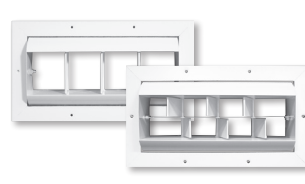
680MP

Double Deflection Industrial
Grille with Pole Operator
M1-3



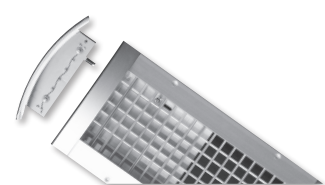
DPL / DPL2

Drum Punkah Louver
with Deflection / Split Vanes
M1-25



DMG*R Series

Radius Endcap,
Spiral Duct Mounted Grilles
N1-3



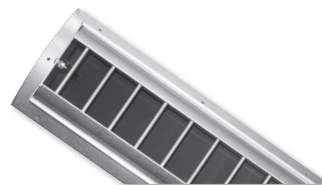
DMG*U Series

Universal Endcap,
Spiral Duct Mounted Grilles
N1-3



DMD

Duct Mounted Drum Louver
N1-37



600 Series

Transfer Grille for Door or
Sidewall Applications
O1-3



Stainless Steel Grilles & Registers

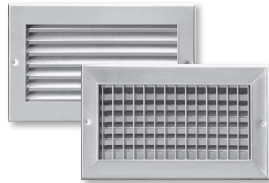
9180

Stainless Steel
Curved Blade Grille
P1-4



980 / 9880 Series

Stainless Steel, Adjustable
Single/Double Deflection
Supply Grille P1-6



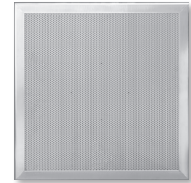
9S80HF Series

Stainless Steel, Fixed Blade
Return with or without Hinge
Face. P1-12



9S80P Series

Stainless Steel, Perforated
Supply/Return Grille
P1-14



9700 Series

Stainless Steel, Single or
Double Core Door Grille
P1-18



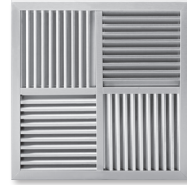
91610 Series

Stainless Steel, Supply or
Return Linear Bar Grille
P1-20



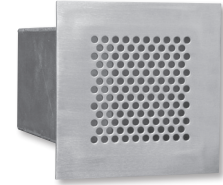
91240 Series

Stainless Steel,
Modular Core Diffuser
P1-24



91310 Series

Stainless Steel,
Perforated Security Grille
P1-26



9EGC5

Stainless Steel
Egg-crate Grille
P1-28



OUR PRODUCTS

Product Finishes

Introduction

Krueger has a broad range of liquid and powder paint solutions available, as well as custom color matching to meet the needs of most air distribution applications. Additionally, we offer standard and custom color Aluminum anodizing for customers that may require the aesthetics and surface characteristics that these finishes offer.

Applied in our state-of-the-art paint facilities, Krueger product finishes take full advantage of the most current, cutting-edge technology available. From standard paint finishes, custom color matching, antimicrobial powder paint coatings, and Aluminum anodizing, Krueger has a product finish that is right for you.

Standard Liquid Paint

Description

Krueger's standard paint selections use an anodic electrocoating process that produces a durable, thorough, controllable, corrosion-resistant finish on all products. The finish may be used as a primer, facilitating easy field painting, if desired, to match the installation.

Method of Application

After assembly, products are washed, rinsed, pretreated with zirconium phosphate, and then rinsed again. They are then suspended from an anodic hook and dipped into a high performance electrocoating tank. Following electrocoating, products are dried and baked in a forced air oven at a peak temperature of 350°F until cured.

Standard Powder Paint

Description

Krueger's powder paint coatings are aesthetically pleasing, provide excellent physical and chemical resistance properties, and produce a durable uniform finish. Additionally, they are antiseptically manufactured to meet the increasingly stringent requirements of the commercial, industrial, healthcare and laboratory markets, and are used exclusively on Krueger's world-class critical environment diffusers.

Method of Application

After assembly, products go through a multi-staged wash and pretreat system, are oven dried, then coated with 2.0 to 3.0 mils of powder paint. The products then move through an oven and are baked at a temperature of 425°F until fully cured.

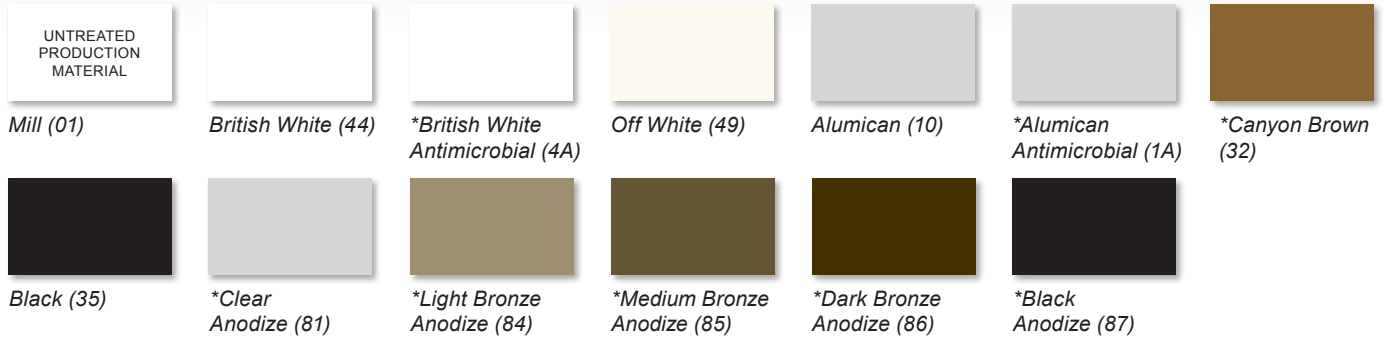
Antimicrobial Powder Coat

Krueger's antimicrobial powder coat paints help reduce the undesirable effects of odors and stains caused by bacteria, mold, mildew, and fungi on the coating. They also resist fingerprints and smudges; staying cleaner between scheduled routine maintenance. When cleaning is necessary, they can be wiped down with a mild soap and water solution.

Antimicrobials within the paint decrease microbial growth by disrupting the microorganisms when they make contact with the surface. A short period of time after contact, the bacteria levels begin to reduce to unmeasurable levels*. Even better, these coatings are environmentally friendly and are considered to be RoHS and REACH-compliant solutions.

***DISCLAIMER:** This product is formulated with antimicrobials to help suppress the growth of odor and stain-causing microorganisms on the coating. It is not intended as a substitute for good hygiene or to prevent foodborne or infectious illnesses.

Standard Color Selection



* All finish types shown are not available with all products. Please see Krueger's Product Catalog or website for available finishes.

! Standard options are Mill or British White. For other paint selections or paint matching, setup fees may apply.
 All colors shown serve as a guide only. Please contact your local Krueger Representative for an actual sample.

FILM PROPERTIES

PROPERTY	TEST METHOD	STANDARD E-COAT VALUE	STANDARD POWDER COAT VALUE	ANTIMICROBIAL POWDER COAT VALUE
Film Thickness	N/A	0.8 - 1.0 mils	2.0 - 3.0 mils	2.0 - 3.0 mils
Gloss: 60-degrees	ASTM D523-89	50 - 85%	60 - 70%	55 - 65%
Pencil Hardness	ASTM D3363-92A	HB - H	H - 2H	H - 2H
Crosshatch Adhesion	ASTM D3359-83	Crosshatch 4B - 5B	5B	5B
Impact	ASTM D2794-93	Direct: >100 in/lb Reverse: >80 in/lb	N/A	N/A
Salt Spray	ASTM B117-9048	96 Hours	1000 Hours	1000 Hours
Humidity	ASTM D2247-92	> 500 Hours	1000 Hours	1000 Hours
Water Soak	ASTM D870-92	250 Hours	N/A	N/A
Conical Mandrel	ASTM D522	N/A	1/8" Conical Bend No Cracking Shows	1/8" Conical Bend No Cracking Shows

Prism Appliqué Colors

Prism Appliqué Specifications

The intended use for the appliqué is on the Krueger Prism ceiling diffuser. The appliqué consists of a matte substrate with an adhesive backing and are individually die cut for precision and consistency. They are then fitted to a pre-formed square embossment in the center of the faceplate with the purpose of providing color. The appliqué is applied after the diffuser is painted. Appliqué specifications include: 0.017" Polycarbonate substrate with opacity film; 0.002" adhesive with peel-off backing; and 0.019" total thickness.

! All colors shown serve as a guide only.
 Please contact your local Krueger Representative for an actual sample.

