

2020



RDx BioScience

Specimen Collection &
Handling Guide





Table of Contents

General Purpose of This Guide	Page 2
Role of the Phlebotomist and Specimen Collector	Page 2
Patient Preparation	Page 3
Specimen Preparation	Page 3
Specimen Type Requirements – illustrations	Page 4
Order of Collection	Page 8
Phlebotomy Tips	Page 9
Method for Preparing Frozen Specimens	Page 10
General Guidelines for Documentation and Specimen Transportation	Page 10
Test Directory	Page 11

General Purpose of This Guide

The purpose of this manual is to ensure that specimen collection, packaging and submission by the facility of origin for the transport is appropriate. This manual outlines the specimen collection and handling procedures and its transport to the laboratory, ensuring appropriate integrity, security, processing, and accuracy of evaluation.

Role of the Phlebotomist and Specimen Collector

The term phlebotomist is applied to a person who has been trained to perform phlebotomy procedures. The primary responsibility of a phlebotomist is to collect blood for laboratory analysis, which is necessary for the diagnosis and care of a patient.

The primary responsibility of the specimen collector is to collect urine samples while following universal precautions and all OSHA standards when handling specimens.

Patient Preparation

Patient preparation is an important step prior to obtaining a specimen in order to ensure accurate and clinically useful results. The following patient preparation and approach must be followed:

1. Explain the procedure that is about to be performed to the patients.
2. Use of proper identification of self to the patient
3. Check for accuracy of patient name and date of birth
4. Always utilize personal protective equipment
5. Request and follow approved script/requisition
6. Prepare all necessary equipment to obtain sample
7. Ensure each sample is accompanied with a script/requisition.

Specimen Preparation

- All Specimens may be potentially infectious materials and should be handled, labeled and transported accordingly.
- All specimens must be properly identified by using a minimum of two identifiers that must include the patient's name and at least one of the following:
 - Date of Birth
 - Requisition Number

Requisition form must be completed and must include the time and date of the specimen collection, as well as the signature of the physician or other legally authorized person requesting the patient's tests.
- Fill tubes to capacity required level. Always make sure to collect enough specimen.
- Lavender, Grey, Green, Yellow, and Royal Blue top tubes contain different anticoagulants that might inhibit blood coagulation. Invert the serum separator tube (SST) 5 times . **DO NOT SHAKE THE TUBES, AS THIS CAN CAUSE HEMOLYSIS.**
- When whole Blood is requested, obtain the full amount in a vacuum tube as shown in the specimen requirement.



Specimen Type Requirements - Illustrations



24 Hour Urine Container



24 Hour Urine Container
(6N HCL)



Bacterial Culture Swab



BD Affirm Swab



Blue Top Tube



Blood Culture Bottle



Cary Blair Stool Kit



Genprobe Aptima Swab



Genprobe Aptima Urine



Green Top Tube

Specimen Type Requirements - Illustrations



Genprobe Aptima Urine



Grey Top Tube



Lavender Top Tube



M4 Transport Media



Nasopharyngeal Swab



One Swab



Occult Blood Stool Card Kit



Ova and Parasite Stool Kit



OC Light Stool Kit



Plain Red Top Tube

Specimen Type Requirements - Illustrations



Quantiferon Gold Test Kit



Royal Blue Top Tube



SAF Fixative Stool Kit



Serum Separator
(Tiger/Speckled/Gel) Tube



Thin Prep Container



Type I Tube



Transport Tube Type II



Urine Culture Tube



Urine Preservative Tube



Urine Sterile Container

Specimen Type Requirements - Illustrations



Universal Transport Media



Yellow Top (ACD) Tube

Toxicology Sample



Oral Fluid Collection Device



Sterile Urine cup with temperature strip

Order of Collection

First	Bottle/Stopper	Additive	Notes
1		Culture Bottles	See bottle label
2		Light Blue	Citrate Tube must be filled completely. Note: When using a winged blood collection set and a coagulation (citrate) tube is the first specimen, begin by drawing another partially-filled citrate tube. This discard tube is used to fill the winged set tubing's "dead space" and helps ensure a proper blood-to-additive ratio.
3		Gold	Gel, serum Do not use gel tubes for toxicology or drug testing.
4		Red	No gel, serum
5		Green or Tan	Heparin
6		Lavender or Tan	EDTA
7		Royal Blue	EDTA
8		Gray	Sodium Fluoride (Glucose)
Tubes with Other Additives			
9		Yellow	Citrate ACD This tube is drawn last.

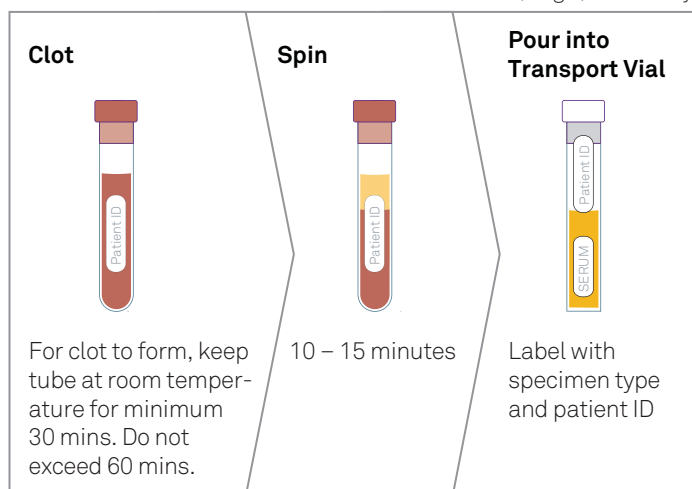
Courtesy and © Becton, Dickinson and Company.

MIXING CHART

BD Vacutainer™ Tube Type	Stopper Color	Number of Inversions
EDTA	Lavender	8 – 10
Citrate	Light Blue	3 – 4
SST® with gel	Red/Black	5
Serum	Red	5
Sodium Fluoride	Gray	8 – 10
Heparin	Green	8 – 10

SEPARATION

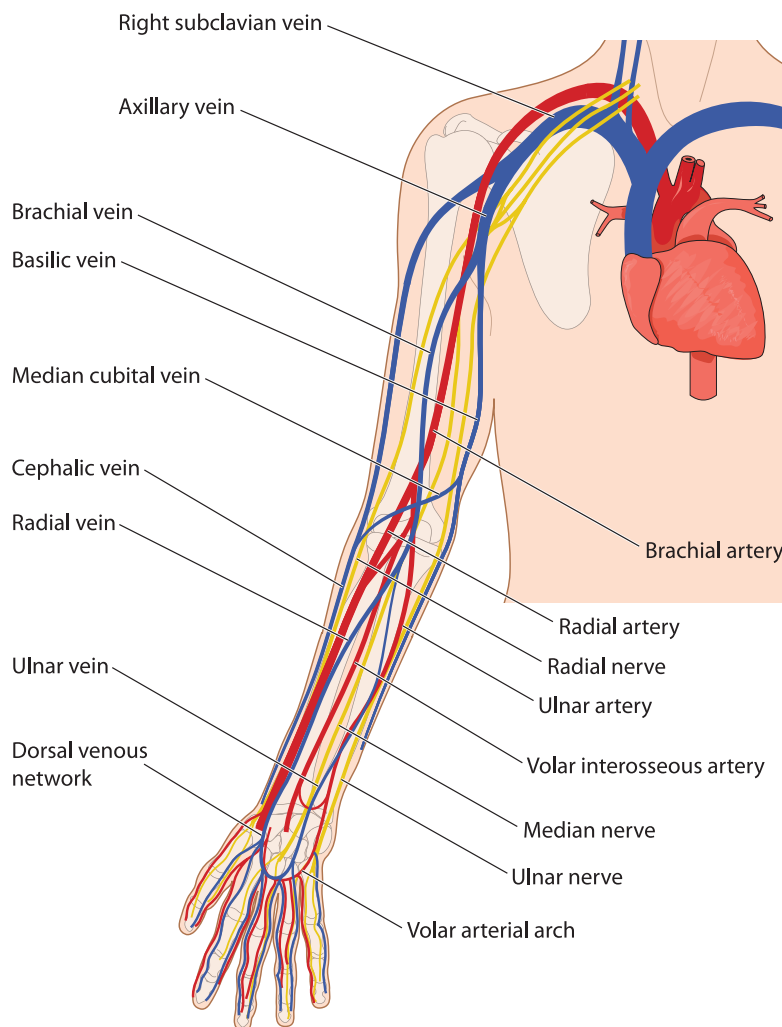
For serum (no gel) tubes only.



For other blood, serum or plasma separation instructions, see the Specimen Collection and Handling section of this directory.

Phlebotomy Tips

- Do not leave the tourniquet on for more than 1-2 minutes. Release it as soon as blood flow is established.
- Do not ask the patients to clench their fists excessively during Phlebotomy.
- Follow the recommended order of tubes when drawing multiple types of tubes (see Order of Collection above).
- Label samples correctly in front of the patient to verify the name, test, etc.
- Do not vigorously shake the tube. Gently mix the additive by inverting the tube 6-7 times.
- Leave the SST tubes in an upright position for at least 20 minutes after collection to allow proper clot formation. Do not leave the tube un-spun for over 60 minutes.
- Centrifuge for 15 minutes.



Methods for Preparing Frozen Specimens

Serum Separator Tube: After the blood in SST tube is clotted, spin the tube for 15 minutes. Transfer the serum using transfer pipette in labeled (complete patient name, date of birth and resulting transferred specimen type) transport tube. Cap the tube tightly and freeze it in the freezer or on dry ice. Place the frozen specimen in a bag along with the requisition, label the bag with a “Frozen” sticker, and provide it to the courier, keeping it separate from regular specimens.

Plain Red Top Tube: Serum of Plain Red is known as Serum PR. After the blood in Plain Red tube is clotted, spin the tube for 10 minutes. Transfer the serum using transfer pipette (make sure blood isn’t transferred with serum) in labeled (complete patient name, date of birth and resulting transferred specimen type) transport tube. Cap the tube tightly and freeze it in the freezer or on dry ice. Place the frozen specimen in a bag along with the requisition, label the bag with a “Frozen” sticker, and provide it to the courier, keeping it separate from regular specimens.

Lavender Top Tube: Plasma of Lavender Top Tube is known as EDTA Plasma. After gently inverting tube for 6-7 times, spin the tube for 10 minutes. Transfer the plasma using transfer pipette (make sure blood isn’t transferred with plasma) in labeled (complete patient name, date of birth and resulting transferred specimen type) transport tube. Cap the tube tightly and freeze it in freezer or on dry ice. Place the frozen specimen in a bag along with the requisition, label the bag with a “Frozen” sticker, and provide it to the courier, keeping it separate from regular specimens.

Blue Top Tube: Plasma of Blue Top Tube is known as Citrated Plasma. After gently inverting tube for 6-7 times, spin the tube for 10 minutes. Transfer the plasma using transfer pipette (make sure blood residue isn’t transferred with plasma) in labeled (complete patient name, Date of birth and resulting transferred specimen type) transport tube. Cap the tube tightly and freeze it in the freezer or on dry ice. Place the frozen specimen in a bag along with the requisition, label the bag with a “Frozen” sticker, and provide it to the courier, keeping it separate from regular specimens.

General Guidelines for Documentation and Specimen Transportation

1. Label tubes correctly in front of the patient (verifies name, test, etc.).
2. Discard waste appropriately.
3. Remove PPE and wash hands before leaving room/area.
4. Bag specimens/requisition correctly and place in appropriate racks for transportation to the lab.

Test Code	Test/ Panel Name	Panel Components	Specimen Required	Sp. Volume	Reported (TAT)	Collection Instructions	Shipping Temperature	Specimen Stability	Rejection Criteria	Performing Laboratory
5002	Basic Metabolic Panel	Glucose, BUN, Creatinine, Sodium, Potassium, Carbon Dioxide, Calcium, Chloride, eGFR	Serum Glass or plastic tubes with or without gel barrier	2mL	1-3 Days	Allow to clot for 15 minutes. Do not allow tubes to remain unspun for any extended period of time as this may adversely affect test results. After clotting has occurred, centrifuge for 15 minutes at 2500-3000 rpm. For No barrier red top tubes, remove serum from the cells and store in an appropriately labeled tube.	Refrigerated	Ambient 2 days Refrigerated 7 days	Specimens received in an inappropriate collection tube Specimen quantity is insufficient No patient identifier on specimen container(s). For Potassium, cannot use hemolyzed specimens	RDx BioScience
5001	Comprehensive Metabolic Panel	Glucose, Sodium, Potassium, Chloride, Creatinine, Total Protein, Calcium, Albumin, Total Bilirubin, Alkaline Phosphatase, AST, ALT, Carbon Dioxide, BUN, Globulin, A/G Ratio, eGFR	Serum Glass or plastic tubes with or without gel barrier	2mL	1-3 Days	Allow to clot for 15 minutes. Do not allow tubes to remain unspun for any extended period of time as this may adversely affect test results. After clotting has occurred, centrifuge for 15 minutes at 2500-3000 rpm. For No barrier red top tubes, remove serum from the cells and store in an appropriately labeled tube.	Refrigerated	Ambient 2 days Refrigerated 7 days	Specimens received in an inappropriate collection tube Specimen quantity is insufficient No patient identifier on specimen container(s). For Potassium, cannot use hemolyzed specimens	RDx BioScience
5000	Electrolytes Panel	Sodium, Potassium, Carbon Dioxide, Chloride	Serum Glass or plastic tubes with or without gel barrier	2mL	1-3 Days	Allow to clot for 15 minutes. Do not allow tubes to remain unspun for any extended period of time as this may adversely affect test results. After clotting has occurred, centrifuge for 15 minutes at 2500-3000 rpm.	Refrigerated	Ambient 7 days Refrigerated 7 days Frozen 1 year	Specimens received in an inappropriate collection tube Specimen quantity is insufficient No patient identifier on specimen container(s). For Potassium, cannot use hemolyzed specimens	RDx BioScience
5003	Hepatic Function Panel (LFT)	Albumin, Total Bilirubin, Direct Bilirubin, Alkaline Phosphatase, AST, ALT, Total Protein	Serum Glass or plastic tubes with or without gel barrier	2mL	1-3 Days	Allow to clot for 15 minutes. Do not allow tubes to remain unspun for any extended period of time as this may adversely affect test results. After clotting has occurred, centrifuge for 15 minutes at 2500-3000 rpm. For No barrier red top tubes, remove serum from the cells and store in an appropriately labeled tube.	Refrigerated	Ambient 2 days Refrigerated 7 days	Specimens received in an inappropriate collection tube Specimen quantity is insufficient No patient identifier on specimen container(s).	RDx BioScience
5021	Hepatitis Acute Panel	Hepatitis A IgM, Hepatitis B Core Antibody, Hepatitis B Core Antibody IgM, Hepatitis B Surface Antigen, Hepatitis C Antibody.	Serum, Glass or Plastic Separator Tube (SST)	5mL	2-5 Days	Allow to clot for 15 minutes. Do not allow tubes to remain unspun for any extended period of time as this may adversely affect test results. After clotting has occurred, centrifuge for 15 minutes at 2500-3000 rpm.	Refrigerated	Ambient 3 days Refrigerated 7 days	Specimens received in an inappropriate collection tube Specimen quantity is insufficient No patient identifier on specimen container(s). Grossly hemolyzed. Obvious microbial contamination.	RDx BioScience
5022	Hepatitis Comprehensive Panel	Hepatitis A IgM, Hepatitis A ab, Hepatitis B Core Antibody, Hepatitis B Core Antibody IgM, Hepatitis B Surface Antigen, Hepatitis B Surface Antibody, Hepatitis C Antibody.	Serum, Glass or Plastic Separator Tube (SST)	7mL	2-5 Days	Allow to clot for 15 minutes. Do not allow tubes to remain unspun for any extended period of time as this may adversely affect test results. After clotting has occurred, centrifuge for 15 minutes at 2500-3000 rpm.	Refrigerated	Ambient 3 days Refrigerated 7 days	Specimens received in an inappropriate collection tube Specimen quantity is insufficient No patient identifier on specimen container(s). Grossly hemolyzed. Obvious microbial contamination.	RDx BioScience
5004	Lipid Panel	Cholesterol, Total, Triglycerides, LDL Cholesterol, calc., HDL Cholesterol, VLDL Cholesterol, calc.	Serum Glass or plastic tubes with or without gel barrier	2mL	1-3 Days	Allow to clot for 15 minutes. Do not allow tubes to remain unspun for any extended period of time as this may adversely affect test results. After clotting has occurred, centrifuge for 15 minutes at 2500-3000 rpm. For No barrier red top tubes, remove serum from the cells and store in an appropriately labeled tube.	Refrigerated	Ambient 2 days Refrigerated 7 days	Specimens received in an inappropriate collection tube Specimen quantity is insufficient No patient identifier on specimen container(s). The National Cholesterol Education Program (NCEP) recommends using fasting specimens.	RDx BioScience
5010	Anemia Profile	CBC w/DIFF, Retic, Iron, TIBC, Ferritin, B12, Folate	Serum - Serum Separator Tube (SST) + Whole Blood - EDTA Lavender Tube	2mL Serum 1 mL Whole Blood	1-3 Days	Allow SST tube to clot for 15 minutes. Do not allow tubes to remain unspun for any extended period of time as this may adversely affect test results. Centrifuge for 15 minutes at 2500-3000 rpm. If multiple draw, collect EDTA (laven-der-top) tube last. Do not centrifuge the EDTA Tubes. Refrigerate if transport and/or analysis will not be performed within 4 hours.	Refrigerated		Specimens received in an inappropriate collection tube Specimen quantity is insufficient No patient identifier on specimen container(s). Clotted Specimens for Hematology will be rejected. EDTA whole blood received for CBC greater than 48 hours after collection.	RDx BioScience
5011	Arthritis Panel	CBC w/DIFF, ANA, ASO, hsCRP, RF, ESR, Uric Acid	Serum - Serum Separator Tube (SST) + Whole Blood - EDTA Lavender Tube	2mL Serum 1 mL Whole Blood	2-4 Days	Allow SST tube to clot for 15 minutes. Do not allow tubes to remain unspun for any extended period of time as this may adversely affect test results. Centrifuge for 15 minutes at 2500-3000 rpm. If multiple draw, collect EDTA (laven-der-top) tube last. Do not centrifuge the EDTA Tubes. Refrigerate if transport and/or analysis will not be performed within 4 hours.	Refrigerated	Serum: Refrigerated - 7 days Whole Blood : Refrigerated - 48 hours	Specimens received in an inappropriate collection tube Specimen quantity is insufficient No patient identifier on specimen container(s). Clotted Specimens for Hematology will be rejected. EDTA whole blood received for CBC greater than 48 hours after collection.	RDx BioScience

Test Code	Test/ Panel Name	Panel Components	Specimen Required	Sp. Volume	Reported (TAT)	Collection Instructions	Shipping Temperature	Specimen Stability	Rejection Criteria	Performing Laboratory
5009	Vitamin B12 & Folate	Vitamin B12, Folate	Serum Separator Tube (SST)	2mL	1-3 Days	Allow to clot for 15 minutes. Do not allow tubes to remain unspun for any extended period of time as this may adversely affect test results. After clotting has occurred, centrifuge for 15 minutes at 2500-3000 rpm.	Refrigerated	Ambient- 7 days Refrigerated- 7 days	Specimens received in an inappropriate collection tube Specimen quantity is insufficient No patient identifier on specimen container(s).	RDx BioScience
5012	Cardiac Panel	hsCRP, Troponin I, CK-MB, CPK, BNP, Homocysteine	Serum - Serum Separator Tube (SST) + EDTA Lavender Tube (LV)	2mL Serum 1 mL Plasma	1-3 Days	Allow SST tube to clot for 15 minutes. Do not allow tubes to remain unspun for any extended period of time as this may adversely affect test results. Centrifuge for 15 minutes at 2500-3000 rpm. If multiple draw, collect EDTA (lavender-top) tube last. Refrigerate if transport and/or analysis will not be performed within 4 hours.	Refrigerated	Serum: Ambient- 2 hours Refrigerated- 7 days EDTA Plasma/ Whole Blood EDTA : Ambient- 4 hours Refrigerated- 24 hours Frozen- 3 months.	Specimens received in an inappropriate collection tube Specimen quantity is insufficient No patient identifier on specimen container(s). EDTA received in glass tubes. EDTA grossly hemolyzed.	RDx BioScience
5015	Diabetic Panel	Glucose, Plasma, Hemoglobin A1C	Gray Top (sodium fluoride/potassium oxalate) + EDTA Whole Blood	1mL Gray Top 1mL Whole Blood	1-3 Days	It is advisable that patient is fasting. Centrifuge the gray tube for 10 minutes at 2000 rpm and aliquot plasma into a properly labeled tube. If multiple draw, collect EDTA (lavender-top) tube last.	Refrigerated	Gray Top Tube - Ambient: 2 days, Refrigerated: 7 days Whole Blood EDTA- Ambient- 8 hours Refrigerated- 7 days	Specimens received in an inappropriate collection tube Specimen quantity is insufficient No patient identifier on specimen container(s).	RDx BioScience
5018	Fertility Panel	FSH, LH, Prolactin, Testosterone, Estradiol, Progesterone	Serum - Serum Separator Tube (SST)	3mL Serum	1-5 Days	Allow SST tube to clot for 15 minutes. Do not allow tubes to remain unspun for any extended period of time as this may adversely affect test results. Centrifuge for 15 minutes at 2500-3000 rpm.	Refrigerated	Ambient- 8 hours Refrigerated- 7 days	Specimens received in an inappropriate collection tube Specimen quantity is insufficient No patient identifier on specimen container(s). Grossly lipemic samples.	RDx BioScience
5020	General Health Panel	Comprehensive Metabolic Panel, CBC w/ Diff, TSH	Serum Glass or plastic tubes with or without gel barrier Whole Blood EDTA (Lavender)	2mL Serum 2 mL Whole Blood	1-3 Days	Allow SST tube to clot for 15 minutes. Do not allow tubes to remain unspun for any extended period of time as this may adversely affect test results. Centrifuge for 15 minutes at 2500-3000 rpm. For No barrier red top tubes, remove serum from the cells and store in an appropriately labeled tube. If multiple draw, collect EDTA (lavender-top) tube last. Do not centrifuge the EDTA Tubes. Refrigerate if transport and/or analysis will not be performed within 4 hours.	Refrigerated	Serum: Ambient- 2 days Refrigerated- 7 days Whole Blood : Ambient- 24 hours Refrigerated - 48 hours	Specimens received in an inappropriate collection tube Specimen quantity is insufficient No patient identifier on specimen container(s). For Potassium, cannot use hemolyzed specimens. Clotted Specimens for Hematology will be rejected.	RDx BioScience
5013	Chem 29 Panel	Comprehensive Metabolic Panel, Lipid Panel, Phosphorus, Uric Acid, GGT, LDH, Iron Total	Serum Glass or plastic tubes with or without gel barrier	2mL	1-3 Days	Allow to clot for 15 minutes. Do not allow tubes to remain unspun for any extended period of time as this may adversely affect test results. After clotting has occurred, centrifuge for 15 minutes at 2500-3000 rpm. For No barrier red top tubes, remove serum from the cells and store in an appropriately labeled tube.	Refrigerated	Ambient: 2 days Refrigerated: 7 days	Specimens received in an inappropriate collection tube Specimen quantity is insufficient No patient identifier on specimen container(s). For Potassium, cannot use hemolyzed specimens.	RDx BioScience
5023	Iron Deficiency Panel	Iron, TIBC, UIBC, Iron Saturation, Ferritin	Serum Glass or plastic tubes with or without gel barrier	1mL	1-3 Days	Allow to clot for 15 minutes. Do not allow tubes to remain unspun for any extended period of time as this may adversely affect test results. After clotting has occurred, centrifuge for 15 minutes at 2500-3000 rpm. For No barrier red top tubes, remove serum from the cells and store in an appropriately labeled tube.	Ambient	Ambient- 7 days Refrigerated- 7 days	Specimens received in an inappropriate collection tube Specimen quantity is insufficient No patient identifier on specimen container(s).	RDx BioScience
5028	Thyroid Basic Panel	TSH (3rd IS), T3 Total, T4 Total, T3 Uptake	Serum Glass or plastic tubes with or without gel barrier	3mL	1-3 Days	Allow to clot for 15 minutes. Do not allow tubes to remain unspun for any extended period of time as this may adversely affect test results. After clotting has occurred, centrifuge for 15 minutes at 2500-3000 rpm. For No barrier red top tubes, remove serum from the cells and store in an appropriately labeled tube.	Refrigerated	Ambient- 18 hours Refrigerated- 7 days Frozen- 90 days	Specimens received in an inappropriate collection tube Specimen quantity is insufficient No patient identifier on specimen container(s).	RDx BioScience
5019	Food Allergy Panel	Wanut (Food) IgE, Codfish IgE, Egg White IgE, Cows Milk IgE, Peanut IgE, Soybean IgE, Wheat IgE, Clam IgE, Corn IgE, Shrimp IgE, Scallop IgE, Total IgE	Serum Glass or plastic tubes with or without gel barrier	3mL	2-4 Days	Allow to clot for 15 minutes. Do not allow tubes to remain unspun for any extended period of time as this may adversely affect test results. After clotting has occurred, centrifuge for 15 minutes at 2500-3000 rpm. For No barrier red top tubes, remove serum from the cells and store in an appropriately labeled tube.	Refrigerated	Refrigerated- 7 days Frozen- 6 months	Specimens received in an inappropriate collection tube Specimen quantity is insufficient No patient identifier on specimen container(s).	RDx BioScience

Test Code	Test/ Panel Name	Panel Components	Specimen Required	Sp. Volume	Reported (TAT)	Collection Instructions	Shipping Temperature	Specimen Stability	Rejection Criteria	Performing Laboratory
5026	Respiratory Allergy Panel	Total IgE, White Mulberry IgE, Oak IgE, Bermuda Grass IgE, Timothy Grass IgE, Common Ragweed IgE, Mugwort IgE, Rough Pigweed IgE, D.fariae IgE, D.Pteronyssinus IgE, Red Mulberry IgE, Cat Dander IgE, Dog Dander IgE, Cockroach IgE, Pnotatum IgE, A.famigatus IgE, Alternaria Tenius IgE, Maple (Box Elder) IgE, Mountain Cedar IgE, Elm IgE, Birch IgE, Sycamore IgE, Cottonwood IgE, White Ash IgE, Sheep Sorrel IgE, Marsh Elder IgE, House Dust Greer IgE, C.Herbarum IgE, Walnut IgE Tree,	Serum Glass or plastic tubes with or without gel barrier	5mL	2-4 Days	Allow to clot for 15 minutes. Do not allow tubes to remain unspun for any extended period of time as this may adversely affect test results. After clotting has occurred, centrifuge for 15 minutes at 2500-3000 rpm.For No barrier red top tubes, remove serum from the cells and store in an appropriately labeled tube.	Refrigerated	Refrigerated- 7 days Frozen- 6 months	Specimens received in an inappropriate collection tube Specimen quantity is insufficient No patient identifier on specimen container(s).	RDx BioScience
1133	AFP, Tumor Marker	AFP, Tumor Marker	Serum - Serum Separator Tube (SST)	0.5 mL	1-3 Days	Allow to clot for 15 minutes. Do not allow tubes to remain unspun for any extended period of time as this may adversely affect test results. After clotting has occurred, centrifuge for 15 minutes at 2500-3000 rpm.For No barrier red top tubes, remove serum from the cells and store in an appropriately labeled tube.	Ambient	Ambient- 7 days Refrigerated- 7 days	Specimens received in an inappropriate collection tube Specimen quantity is insufficient No patient identifier on specimen container(s).	RDx BioScience
1001	Albumin	Albumin	Serum Glass or plastic tubes with or without gel barrier	0.5mL	1-3 Days	Allow to clot for 15 minutes. Do not allow tubes to remain unspun for any extended period of time as this may adversely affect test results. After clotting has occurred, centrifuge for 15 minutes at 2500-3000 rpm.No barrier red top tubes, remove serum from the cells and store in an appropriately labeled tube.	Ambient	Seperated Serum - Ambient 2.5 months Refrigerated 5 monts	Specimens received in an inappropriate collection tube Specimen quantity is insufficient No patient identifier on specimen container(s)	RDx BioScience
1002	Alkaline Phosphatase (ALP)	Alkaline Phosphatase (ALP)	Serum Glass or plastic tubes with or without gel barrier	0.5mL	1-3 Days	Allow to clot for 15 minutes. Do not allow tubes to remain unspun for any extended period of time as this may adversely affect test results. After clotting has occurred, centrifuge for 15 minutes at 2500-3000 rpm.No barrier red top tubes, remove serum from the cells and store in an appropriately labeled tube.	Ambient	Ambient- 7 days Refrigerated- 7 days Frozen- 2 months	Specimens received in an inappropriate collection tube Specimen quantity is insufficient No patient identifier on specimen container(s)	RDx BioScience
1003	Alanine Amino-transferase (ALT)	Alanine Amino-transferase (ALT)	Serum Glass or plastic tubes with or without gel barrier	0.5mL	1-3 Days	Allow to clot for 15 minutes. Do not allow tubes to remain unspun for any extended period of time as this may adversely affect test results. After clotting has occurred, centrifuge for 15 minutes at 2500-3000 rpm.No barrier red top tubes, remove serum from the cells and store in an appropriately labeled tube.	Refrigerated	Ambient- 3 days Refrigerated- 7 days Frozen- 60 days	Specimens received in an inappropriate collection tube Specimen quantity is insufficient No patient identifier on specimen container(s)	RDx BioScience
1024	Amylase	Amylase	Serum Glass or plastic tubes with or without gel barrier	0.5mL	1-3 Days	Allow to clot for 15 minutes. Do not allow tubes to remain unspun for any extended period of time as this may adversely affect test results. After clotting has occurred, centrifuge for 15 minutes at 2500-3000 rpm.No barrier red top tubes, remove serum from the cells and store in an appropriately labeled tube.	Ambient	Ambient- 7 days Refrigerated- 7 days	Specimens received in an inappropriate collection tube Specimen quantity is insufficient No patient identifier on specimen container(s)	RDx BioScience
SML1138R	ANA Screen IFA w/ Reflex to Titer/Pattern	ANA Screen IFA w/ Reflex to Titer/Pattern	Serum - Serum Separator Tube (SST)	1mL	2-3 Days	Allow to clot for 15 minutes. Do not allow tubes to remain unspun for any extended period of time as this may adversely affect test results. After clotting has occurred, centrifuge for 15 minutes at 2500-3000 rpm. NOTE: If ANA Screen IFA is Positive, ANA Titer and Pattern will be performed.	Refrigerated	Refrigerated 7 days	Unspun Serum	Sunrise Medical Laboratories
1026	Anti-Streptolysin O (ASO)	Anti-Streptolysin O (ASO)	Serum Separator Tube (SST)	0.5 mL	1-3 Days	Allow to clot for 15 minutes. Do not allow tubes to remain unspun for any extended period of time as this may adversely affect test results. After clotting has occurred, centrifuge for 15 minutes at 2500-3000 rpm.	Refrigerated	Ambient- 2 days Refrigerated- 2 days Frozen- 6 months	Specimens received in an inappropriate collection tube Specimen quantity is insufficient No patient identifier on specimen container(s)	RDx BioScience

Test Code	Test/ Panel Name	Panel Components	Specimen Required	Sp. Volume	Reported (TAT)	Collection Instructions	Shipping Temperature	Specimen Stability	Rejection Criteria	Performing Laboratory
1005	Asparate Amino-transferase (AST)	Asparate Amino-transferase (AST)	Serum Glass or plastic tubes with or without gel barrier	0.5mL	1-3 Days	Allow to clot for 15 minutes. Do not allow tubes to remain unspun for any extended period of time as this may adversely affect test results. After clotting has occurred, centrifuge for 15 minutes at 2500-3000 rpm.No barrier red top tubes, remove serum from the cells and store in an appropriately labeled tube.	Refrigerated	Ambient- 4 days Refrigerated- 7 days Frozen- 12 weeks	Specimens received in an inappropriate collection tube Specimen quantity is insufficient No patient identifier on specimen container(s)	RDx BioScience
1097	Beta-hCG, Total	Beta-hCG, Total	Serum Glass or plastic tubes with or without gel barrier	1.0mL	1-3 Days	Allow to clot for 15 minutes. Do not allow tubes to remain unspun for any extended period of time as this may adversely affect test results. After clotting has occurred, centrifuge for 15 minutes at 2500-3000 rpm.No barrier red top tubes, remove serum from the cells and store in an appropriately labeled tube.	Refrigerated	Ambient- 7 days Refrigerated- 7 days	Specimens received in an inappropriate collection tube Specimen quantity is insufficient No patient identifier on specimen container(s)	RDx BioScience
1007	Bilirubin, Direct	Bilirubin, Direct	Serum Glass or plastic tubes with or without gel barrier	0.5mL	1-3 Days	Allow to clot for 15 minutes. Do not allow tubes to remain unspun for any extended period of time as this may adversely affect test results. After clotting has occurred, centrifuge for 15 minutes at 2500-3000 rpm.No barrier red top tubes, remove serum from the cells and store in an appropriately labeled tube.	Refrigerated	Ambient- 2 days Refrigerated- 7 days Frozen- 3 months	Specimens received in an inappropriate collection tube Specimen quantity is insufficient No patient identifier on specimen container(s)	RDx BioScience
1006	Bilirubin, Total	Bilirubin, Total	Serum Glass or plastic tubes with or without gel barrier	0.5mL	1-3 Days	Allow to clot for 15 minutes. Do not allow tubes to remain unspun for any extended period of time as this may adversely affect test results. After clotting has occurred, centrifuge for 15 minutes at 2500-3000 rpm.No barrier red top tubes, remove serum from the cells and store in an appropriately labeled tube.	Refrigerated	Ambient- 1 day Refrigerated- 7 days Frozen- 6 months	Specimens received in an inappropriate collection tube Specimen quantity is insufficient No patient identifier on specimen container(s)	RDx BioScience
SML1276	ABO Blood Group & Rh Factor	ABO Blood Group & Rh Factor	Whole Blood EDTA Lavander top	5mL	2-5 Days	If multiple draw, collect EDTA (lavender-top) tube last. *Label all tubes with patient's name and Date of Birth, all Transfer tubes must be labeled with contents, i.e. Serum, Plasma etc.*	Refrigerated	Refrigerated- 3 Days	Clotted whole blood. Improper collection.	Sunrise Medical Laboratories
1123	B-Type Natriuretic Peptide (BNP)	B-Type Natriuretic Peptide (BNP)	Whole Blood or Plasma EDTA-Lavander Top	3mL	1-3 Days	If multiple draw, collect EDTA (lavender-top) tube last. Samples should be collected in plastic collection tubes, because the BNP molecule has been shown to be unstable in glass containers	Refrigerated	Ambient - 4 Hours Refrigerated - 24 hours Frozen- 3 months	Grossly hemolyzed. Collected in glass containers.	RDx BioScience
1008	BUN (Urea Nitrogen)	BUN (Urea Nitrogen)	Serum Glass or plastic tubes with or without gel barrier	0.5mL	1-3 Days	Allow to clot for 15 minutes. Do not allow tubes to remain unspun for any extended period of time as this may adversely affect test results. After clotting has occurred, centrifuge for 15 minutes at 2500-3000 rpm.No barrier red top tubes, remove serum from the cells and store in an appropriately labeled tube.	Ambient	Ambient- 7 days Refrigerated- 7 days	Specimens received in an inappropriate collection tube Specimen quantity is insufficient No patient identifier on specimen container(s)	RDx BioScience
1096	C-Peptide	C-Peptide	Serum Glass or plastic tubes with or without gel barrier	0.5mL	1-3 Days	Allow to clot for 15 minutes. Do not allow tubes to remain unspun for any extended period of time as this may adversely affect test results. After clotting has occurred, centrifuge for 15 minutes at 2500-3000 rpm.No barrier red top tubes, remove serum from the cells and store in an appropriately labeled tube.	Refrigerated	Ambient- 24 hours Refrigerated- 48 hours	Specimens received in an inappropriate collection tube Specimen quantity is insufficient No patient identifier on specimen container(s)	RDx BioScience
1081	Complement C3	Complement C3	Serum Glass or plastic tubes with or without gel barrier	0.5mL	1-3 Days	Allow to clot for 15 minutes. Do not allow tubes to remain unspun for any extended period of time as this may adversely affect test results. After clotting has occurred, centrifuge for 15 minutes at 2500-3000 rpm.No barrier red top tubes, remove serum from the cells and store in an appropriately labeled tube.	Refrigerated	Refrigerated- 8 days	Specimens received in an inappropriate collection tube Specimen quantity is insufficient No patient identifier on specimen container(s)	RDx BioScience
1082	Complement C4	Complement C4	Serum - Serum Separator Tube (SST)	0.5mL	1-3 Days	Allow to clot for 15 minutes. Do not allow tubes to remain unspun for any extended period of time as this may adversely affect test results. After clotting has occurred, centrifuge for 15 minutes at 2500-3000 rpm.No barrier red top tubes, remove serum from the cells and store in an appropriately labeled tube.	Refrigerated	Refrigerated 2 Days	Specimens received in an inappropriate collection tube Specimen quantity is insufficient No patient identifier on specimen container(s)	RDx BioScience
1091	Cancer Antigen (CA) 125	CA 125	Serum Glass or plastic tubes with or without gel barrier	1mL	1-3 Days	Allow to clot for 15 minutes. Do not allow tubes to remain unspun for any extended period of time as this may adversely affect test results. After clotting has occurred, centrifuge for 15 minutes at 2500-3000 rpm.No barrier red top tubes, remove serum from the cells and store in an appropriately labeled tube.	Refrigerated	Ambient- 7 days Refrigerated- 7 days	Specimens received in an inappropriate collection tube Specimen quantity is insufficient No patient identifier on specimen container(s)	RDx BioScience

Specimen Collection & Handling Guide 2020

Test Code	Test/ Panel Name	Panel Components	Specimen Required	Sp. Volume	Reported (TAT)	Collection Instructions	Shipping Temperature	Specimen Stability	Rejection Criteria	Performing Laboratory
1092	Cancer Antigen (CA) 15-3	CA 15-3	Serum Glass or plastic tubes with or without gel barrier	1mL	1-3 Days	Allow to clot for 15 minutes. Do not allow tubes to remain unspun for any extended period of time as this may adversely affect test results. After clotting has occurred, centrifuge for 15 minutes at 2500-3000 rpm. No barrier red top tubes, remove serum from the cells and store in an appropriately labeled tube.	Refrigerated	Ambient- 7 days Refrigerated- 7 days	Specimens received in an inappropriate collection tube Specimen quantity is insufficient No patient identifier on specimen container(s)	RDx BioScience
1093	Cancer Antigen (CA) 19-9	CA 19-9	Serum Glass or plastic tubes with or without gel barrier	1mL	1-3 Days	Allow to clot for 15 minutes. Do not allow tubes to remain unspun for any extended period of time as this may adversely affect test results. After clotting has occurred, centrifuge for 15 minutes at 2500-3000 rpm. No barrier red top tubes, remove serum from the cells and store in an appropriately labeled tube.	Refrigerated	Ambient- 7 days Refrigerated- 7 days	Specimens received in an inappropriate collection tube Specimen quantity is insufficient No patient identifier on specimen container(s)	RDx BioScience
SML1272	Cancer Antigen (CA) 27.29	CA 27.29	Serum Glass or plastic tubes with or without gel barrier	1mL	2-5 Days	Allow to clot for 15 minutes. Do not allow tubes to remain unspun for any extended period of time as this may adversely affect test results. After clotting has occurred, centrifuge for 15 minutes at 2500-3000 rpm. No barrier red top tubes, remove serum from the cells and store in an appropriately labeled tube.	Refrigerated	Refrigerated- 48 hours Freeze sample at -20 if not performed within 48 hours	Specimens received in an inappropriate collection tube Specimen quantity is insufficient No patient identifier on specimen container(s)	Sunrise Medical Laboratories
1009	Calcium	Calcium	Serum Glass or plastic tubes with or without gel barrier	0.5mL	1-3 Days	Allow to clot for 15 minutes. Do not allow tubes to remain unspun for any extended period of time as this may adversely affect test results. After clotting has occurred, centrifuge for 15 minutes at 2500-3000 rpm. No barrier red top tubes, remove serum from the cells and store in an appropriately labeled tube.	Ambient	Ambient- 7 days Refrigerated- 3 weeks	Specimens received in an inappropriate collection tube Specimen quantity is insufficient No patient identifier on specimen container(s)	RDx BioScience
1112	Carbamazepine (Tegretol)	Carbamazepine	Serum	1.5mL	1-3 Days	<ul style="list-style-type: none"> • Allow blood to clot for 15 minutes. • Do not allow tubes to remain unspun for > 45 minutes • Centrifuge for 15 minutes at 2500-3000 rpm. • Remove serum from cells and store in an appropriately labeled tube. • Label all tubes with patient's name and Date of Birth • Refrigerate (2-8°C) serum if it is not going to be transported or tested promptly 	Ambient	<ul style="list-style-type: none"> • Specimens may be stored on or off the clot or red blood cells for <ul style="list-style-type: none"> • up to 24 hours at room temperature or • up to 7 days at 2-8°C. • If testing will be delayed more than 7 days, remove serum from the clot or red blood cells and store at -20°C or colder. • Avoid more than 3 freeze/thaw cycles. 	<ul style="list-style-type: none"> • heat-inactivated • pooled • grossly hemolyzed • obvious microbial contamination 	RDx BioScience
5005	CBC W/ Differential	HCT, HGB, MCHC, MCH, MCV, MPV, Platelet, RBC, RDW, WBC, Baso, Eosin, Lymph, Mono, Neutro	Whole Blood EDTA - Lavender Top Tube	3mL	1-3 Days	<ul style="list-style-type: none"> • If multiple draw, collect EDTA (lavender-top) tube last. • Do not spin or separate plasma, • Label all tubes with patient's name and Date of Birth 	N/A	Whole Blood EDTA- Best at ambient temperature for 8 hours after draw. Refrigerated 2 Days (48 Hours)	Clotted whole blood. Improper collection.	RDx BioScience
1108	CEA	CEA	Serum	1.5mL	1-3 Days	<ul style="list-style-type: none"> • Allow blood to clot for 15 minutes. • Do not allow tubes to remain unspun for > 45 minutes • Centrifuge for 15 minutes at 2500-3000 rpm. • Remove serum from cells and store in an appropriately labeled tube. • Label all tubes with patient's name and Date of Birth • Refrigerate (2-8°C) serum if it is not going to be transported or tested promptly 	Frozen	<ul style="list-style-type: none"> • Store samples, tightly stoppered, at room temperature (15 to 30°C) for no longer than eight hours. • If the assay will not be completed within eight hours, refrigerate the samples at 2 to 8°C. • If the assay will not be completed within 48 hours, or for shipment of samples, freeze at -20°C or colder. 	Hemolyzed Serum, Unspun Serum, improper collection.	RDx BioScience
1017	Cholesterol Total	Cholesterol, Total	Serum - Serum Separator Tube (SST)	1.5mL	1-3 Days	<ul style="list-style-type: none"> • Allow blood to clot for 15 minutes. • Do not allow tubes to remain unspun for > 45 minutes. • Centrifuge for 15 minutes at 2500-3000 rpm. • Label all tubes with patient's name and Date of Birth • Refrigerate (2-8°C) centrifuged specimen if it is not going to be transported or tested promptly. 	N/A	20 to 25°C for 7 days 2 to 8°C for 7 days -20°C for 3 months	Hemolyzed Serum, Unspun Serum, improper collection.	RDx BioScience

Test Code	Test/ Panel Name	Panel Components	Specimen Required	Sp. Volume	Reported (TAT)	Collection Instructions	Shipping Temperature	Specimen Stability	Rejection Criteria	Performing Laboratory
1028	Creatine Kinase, MB	Creatine Kinase, MB	Serum - Serum Separator Tube (SST)	1.5mL	1-3 Days	<ul style="list-style-type: none"> • Allow blood to clot for 15 minutes. • Do not allow tubes to remain unspun for > 45 minutes. • Centrifuge for 15 minutes at 2500-3000 rpm. • Label all tubes with patient's name and Date of Birth • Refrigerate (2-8°C) centrifuged specimen if it is not going to be transported or tested promptly. 	Frozen	<ul style="list-style-type: none"> • Store samples, tightly stoppered, at room temperature (15 to 30°C) for no longer than eight hours. • If the assay will not be completed within eight hours, refrigerate the samples at 2 to 8°C. • If the assay will not be completed within 48 hours, or for shipment of samples, freeze at -20°C or colder. 	Hemolyzed Serum, Unspun Serum, improper collection.	RDx BioScience
1098	Cortisol	Cortisol	Serum - Serum Separator Tube (SST)	1.5mL	1-3 Days	<ul style="list-style-type: none"> • Allow blood to clot for 15 minutes. • Do not allow tubes to remain unspun for > 45 minutes. • Centrifuge for 15 minutes at 2500-3000 rpm. • Label all tubes with patient's name and Date of Birth • Refrigerate (2-8°C) centrifuged specimen if it is not going to be transported or tested promptly. 	Frozen	<ul style="list-style-type: none"> • Store samples, tightly stoppered, at room temperature (15 to 30°C) for no longer than eight hours. • If the assay will not be completed within eight hours, refrigerate the samples at 2 to 8°C. • If the assay will not be completed within 48 hours, or for shipment of samples, freeze at -20°C or colder. 	Hemolyzed Serum, Unspun Serum, improper collection.	RDx BioScience
1027	CPK	CPK	Serum - Serum Separator Tube (SST)	1.5mL	1-3 Days	<ul style="list-style-type: none"> • Allow blood to clot for 15 minutes. • Do not allow tubes to remain unspun for > 45 minutes. • Centrifuge for 15 minutes at 2500-3000 rpm. • Label all tubes with patient's name and Date of Birth • Refrigerate (2-8°C) centrifuged specimen if it is not going to be transported or tested promptly. 	N/A	20 to 25°C for 2 days 2 to 8°C for 7 days	Hemolyzed Serum, Unspun Serum, improper collection.	RDx BioScience
1284	Creatinine	Creatinine, Serum	Serum - Serum Separator Tube (SST)	1.5mL	1-3 Days	<ul style="list-style-type: none"> • Allow blood to clot for 15 minutes. • Do not allow tubes to remain unspun for > 45 minutes. • Centrifuge for 15 minutes at 2500-3000 rpm. • Label all tubes with patient's name and Date of Birth • Refrigerate (2-8°C) centrifuged specimen if it is not going to be transported or tested promptly. 	N/A	20-25°C for 7 days 2-8°C for 7 days -20°C for 3 months	Hemolyzed Serum, Unspun Serum, improper collection.	RDx BioScience
1036	CRP	CRP	Serum - Serum Separator Tube (SST)	1.5mL	1-3 Days	<ul style="list-style-type: none"> • Allow blood to clot for 15 minutes. • Do not allow tubes to remain unspun for > 45 minutes. • Centrifuge for 15 minutes at 2500-3000 rpm. • Label all tubes with patient's name and Date of Birth • Refrigerate (2-8°C) centrifuged specimen if it is not going to be transported or tested promptly. 	N/A	20 to 25°C for 15 days 2 to 8°C for 2 months -20°C for 3 years	Hemolyzed Serum, Unspun Serum, improper collection.	RDx BioScience
1210	CRP Cardio (HS)	CRP-High Sensitivity	Serum - Serum Separator Tube (SST)	1.5mL	1-3 Days	<ul style="list-style-type: none"> • Allow blood to clot for 15 minutes. • Do not allow tubes to remain unspun for > 45 minutes. • Centrifuge for 15 minutes at 2500-3000 rpm. • Label all tubes with patient's name and Date of Birth • Refrigerate (2-8°C) centrifuged specimen if it is not going to be transported or tested promptly. 	N/A	20 to 25°C for 15 days 2 to 8°C for 2 months -20°C for 3 years	Hemolyzed Serum, Unspun Serum, improper collection.	RDx BioScience
1132	DHEAS	DHEA-Sulfate	Serum - Serum Separator Tube (SST)	1.5mL	1-3 Days	<ul style="list-style-type: none"> • Allow blood to clot for 15 minutes. • Do not allow tubes to remain unspun for > 45 minutes. • Centrifuge for 15 minutes at 2500-3000 rpm. • Label all tubes with patient's name and Date of Birth • Refrigerate (2-8°C) centrifuged specimen if it is not going to be transported or tested promptly. 	Frozen	<ul style="list-style-type: none"> • Store samples, tightly stoppered, at room temperature (15 to 30°C) for no longer than eight hours. • If the assay will not be completed within eight hours, refrigerate the samples at 2 to 8°C. • If the assay will not be completed within 48 hours, or for shipment of samples, freeze at -20°C or colder. 	Hemolyzed Serum, Unspun Serum, improper collection.	RDx BioScience

Specimen Collection & Handling Guide 2020

Test Code	Test/ Panel Name	Panel Components	Specimen Required	Sp. Volume	Reported (TAT)	Collection Instructions	Shipping Temperature	Specimen Stability	Rejection Criteria	Performing Laboratory
1113	Digoxin	Digoxin	Serum - No Gel Barrier Red Top Tube	1.5mL	1-3 Days	<ul style="list-style-type: none"> Allow blood to clot for 15 minutes. Do not allow tubes to remain unspun for > 45 minutes Centrifuge for 15 minutes at 2500-3000 rpm. Remove serum from cells and store in an appropriately labeled tube. Label all tubes with patient's name and Date of Birth Refrigerate (2-8°C) serum if it is not going to be transported or tested promptly 	Refrigerated	Room temperature for ≤ 48 hours 2-8°C for ≤ 48 hours -20°C or colder for ≤ 6 months	<ul style="list-style-type: none"> heat-inactivated pooled grossly hemolyzed obvious microbial contamination 	RDx BioScience
1116	Dilantin (Phenytoin)	Phenytoin (Dilantin)	Serum - No Gel Barrier Red Top Tube	1.5mL	1-3 Days	<ul style="list-style-type: none"> Allow blood to clot for 15 minutes. Do not allow tubes to remain unspun for > 45 minutes Centrifuge for 15 minutes at 2500-3000 rpm. Remove serum from cells and store in an appropriately labeled tube. Label all tubes with patient's name and Date of Birth Refrigerate (2-8°C) serum if it is not going to be transported or tested promptly 	Ambient	Room temperature (20-25°C) for ≤ 2 days 2-8°C for ≤ 8 days -20°C or colder for ≤ 5 months	<ul style="list-style-type: none"> heat-inactivated pooled grossly hemolyzed cadaver specimens or any other body fluids 	RDx BioScience
1099	Estradiol	Estradiol	Serum - Serum Separator Tube (SST)	1.5mL	1-3 Days	<ul style="list-style-type: none"> Allow blood to clot for 15 minutes. Do not allow tubes to remain unspun for > 45 minutes. Centrifuge for 15 minutes at 2500-3000 rpm. Label all tubes with patient's name and Date of Birth Refrigerate (2-8°C) centrifuged specimen if it is not going to be transported or tested promptly. 	Refrigerated	Room temperature for 8 hours 2-8°C for 7 days	Hemolyzed Serum, Lipemic Serum, improper collection.	RDx BioScience
1109	Ferritin	Ferritin	Serum - Serum Separator Tube (SST)	1.5mL	1-3 Days	<ul style="list-style-type: none"> Allow blood to clot for 15 minutes. Do not allow tubes to remain unspun for > 45 minutes. Centrifuge for 15 minutes at 2500-3000 rpm. Label all tubes with patient's name and Date of Birth Refrigerate (2-8°C) centrifuged specimen if it is not going to be transported or tested promptly. 	Frozen	<ul style="list-style-type: none"> Store samples, tightly stoppered, at room temperature (15 to 30°C) for no longer than eight hours. If the assay will not be completed within eight hours, refrigerate the samples at 2 to 8°C. If the assay will not be completed within 48 hours, or for shipment of samples, freeze at -20°C or colder. 	Hemolyzed Serum, Unspun Serum, improper collection.	RDx BioScience
1111	Folic Acid (Folate)	Folate	Serum - Serum Separator Tube (SST)	1.5mL	1-3 Days	<ul style="list-style-type: none"> Allow blood to clot for 15 minutes. Do not allow tubes to remain unspun for > 45 minutes. Centrifuge for 15 minutes at 2500-3000 rpm. Label all tubes with patient's name and Date of Birth Refrigerate (2-8°C) centrifuged specimen if it is not going to be transported or tested promptly. 	Frozen	<ul style="list-style-type: none"> If the assay will not be completed immediately, refrigerate the samples at 2 to 8°C. If the assay will not be completed within 48 hours, or for shipment of samples, freeze at -20°C or colder. Beckman Coulter, Inc. recommends that frozen specimens can be stored up to six months before testing. Thaw samples only once. 	Hemolyzed Serum, Unspun Serum, improper collection.	RDx BioScience
SML3050	Fructosamine	Fructosamine	Serum - Serum Separator Tube (SST)	1.5mL	2-5 Days	<ul style="list-style-type: none"> Allow blood to clot for 15 minutes. Do not allow tubes to remain unspun for > 45 minutes. Centrifuge for 15 minutes at 2500-3000 rpm. Label all tubes with patient's name and Date of Birth Refrigerate (2-8°C) centrifuged specimen if it is not going to be transported or tested promptly. 	Refrigerated	3 Days R/T 7 Days 2-8 C	Hemolyzed Serum, Unspun Serum, improper collection.	Sunrise Medical Laboratories
1103	FSH	FSH	Serum - Serum Separator Tube (SST)	1.5mL	1-3 Days	<ul style="list-style-type: none"> Allow blood to clot for 15 minutes. Do not allow tubes to remain unspun for > 45 minutes. Centrifuge for 15 minutes at 2500-3000 rpm. Label all tubes with patient's name and Date of Birth Refrigerate (2-8°C) centrifuged specimen if it is not going to be transported or tested promptly. 	Frozen	<ul style="list-style-type: none"> Store samples, tightly stoppered, at room temperature (15 to 30°C) for no longer than eight hours. If the assay will not be completed within eight hours, refrigerate the samples at 2 to 8°C. If the assay will not be completed within 48 hours, or for shipment of samples, freeze at -20°C or colder. 	Hemolyzed Serum, Unspun Serum, improper collection.	RDx BioScience

Test Code	Test/ Panel Name	Panel Components	Specimen Required	Sp. Volume	Reported (TAT)	Collection Instructions	Shipping Temperature	Specimen Stability	Rejection Criteria	Performing Laboratory
1114	Gentamicin	Gentamicin, Random	Serum	1.5mL	1-3 Days	<ul style="list-style-type: none"> • Allow blood to clot for 15 minutes. • Do not allow tubes to remain unspun for > 45 minutes • Centrifuge for 15 minutes at 2500-3000 rpm. • Remove serum from cells and store in an appropriately labeled tube. • Label all tubes with patient's name and Date of Birth • Refrigerate (2-8°C) serum if it is not going to be transported or tested promptly 	Ambient	Specimens may be stored on or off the clot or red blood cells for <ul style="list-style-type: none"> •• up to 24 hours at room temperature or •• up to 7 days at 2-8°C. •• If testing will be delayed more than 7 days, remove serum or plasma from the clot or red blood cells and store at -20°C or colder. •• Avoid more than 3 freeze/thaw cycles. 	<ul style="list-style-type: none"> • heat-inactivated • pooled • grossly hemolyzed • obvious microbial contamination 	RDx BioScience
1030	Gamma-glutamyl Transferase	GGT	Serum - Serum Separator Tube (SST)	1.5mL	1-3 Days	<ul style="list-style-type: none"> • Allow blood to clot for 15 minutes. • Do not allow tubes to remain unspun for > 45 minutes. • Centrifuge for 15 minutes at 2500-3000 rpm. • Label all tubes with patient's name and Date of Birth • Refrigerate (2-8°C) centrifuged specimen if it is not going to be transported or tested promptly. 	N/A	20 to 25°C for 7 days 2 to 8°C for 7 days -20°C for > 1 year	Hemolyzed Serum, Unspun Serum, improper collection.	RDx BioScience
SML3009	Glycomark	Glycomark (1,5-Anhydroglucitol)	Serum - Serum Separator Tube (SST)	1mL	2-5 Days	<ul style="list-style-type: none"> • Allow blood to clot for 15 minutes. • Do not allow tubes to remain unspun for > 45 minutes. • Centrifuge for 15 minutes at 2500-3000 rpm. • Label all tubes with patient's name and Date of Birth • Refrigerate (2-8°C) centrifuged specimen if it is not going to be transported or tested promptly. 	Refrigerated	48 HRS R/T 1 WEEK 2-8 C	Hemolyzed Serum, Unspun Serum, improper collection.	Sunrise Medical Laboratories
1063	Glucose, Fasting	Glucose, Fasting	Serum - Serum Separator Tube (SST) or Gray Top (sodium fluoride/potassium oxalate)	1.5mL	1-3 Days	SST: <ul style="list-style-type: none"> • Allow blood to clot for 15 minutes. • Do not allow tubes to remain unspun for > 45 minutes. • Centrifuge for 15 minutes at 2500-3000 rpm. • Label all tubes with patient's name and Date of Birth • Refrigerate (2-8°C) centrifuged specimen if it is not going to be transported or tested promptly. Gray Top: <ul style="list-style-type: none"> • Centrifuge for 10 minutes at 2000 rpm. • Aliquot plasma into a labeled tube. • Refrigerate (2-8°C) if transport and/or analysis will not occur promptly. 	N/A	20 to 25°C for 2 days 2 to 8°C for 7 days -20°C for 1 day	Improper Collection	RDx BioScience
1013	Glucose	Glucose	Serum - Serum Separator Tube (SST) or Gray Top (sodium fluoride/potassium oxalate)	1.5mL	1-3 Days	SST: <ul style="list-style-type: none"> • Allow blood to clot for 15 minutes. • Do not allow tubes to remain unspun for > 45 minutes. • Centrifuge for 15 minutes at 2500-3000 rpm. • Label all tubes with patient's name and Date of Birth • Refrigerate (2-8°C) centrifuged specimen if it is not going to be transported or tested promptly. Gray Top: <ul style="list-style-type: none"> • Centrifuge for 10 minutes at 2000 rpm. • Aliquot plasma into a labeled tube. • Refrigerate (2-8°C) if transport and/or analysis will not occur promptly. 	N/A	20 to 25°C for 2 days 2 to 8°C for 7 days -20°C for 1 day	Hemolyzed Serum, Unspun Serum, improper collection.	RDx BioScience
1213	Growth Hormone	Growth Hormone	Serum - Serum Separator Tube (SST)	3mL	2-5 Days	<ul style="list-style-type: none"> • Allow blood to clot for 15 minutes. • Do not allow tubes to remain unspun for > 45 minutes. • Centrifuge for 15 minutes at 2500-3000 rpm. • Label all tubes with patient's name and Date of Birth • Refrigerate (2-8°C) centrifuged specimen if it is not going to be transported or tested promptly. 	Frozen	<ul style="list-style-type: none"> • Store samples tightly stoppered at room temperature (15 to 30°C) for no longer than eight hours. • If the assay will not be completed within eight hours, refrigerate the samples at 2 to 8°C. • If the assay will not be completed within 48 hours, or for shipment of samples, freeze at -20°C or colder. 	Hemolyzed Serum, Unspun Serum, improper collection.	RDx BioScience

Specimen Collection & Handling Guide 2020

Test Code	Test/ Panel Name	Panel Components	Specimen Required	Sp. Volume	Reported (TAT)	Collection Instructions	Shipping Temperature	Specimen Stability	Rejection Criteria	Performing Laboratory
1153	H. Pylori IgG (Helicobacter pylori)	H. Pylori Ab, IgG	Serum - Serum Separator Tube (SST)	3mL	1-5 Days	<ul style="list-style-type: none"> • Allow blood to clot for 15 minutes. • Do not allow tubes to remain unspun for > 45 minutes. • Centrifuge for 15 minutes at 2500-3000 rpm. • Label all tubes with patient's name and Date of Birth • Refrigerate (2-8°C) centrifuged specimen if it is not going to be transported or tested promptly. 	N/A	Store sample at room temperature for no longer than 8 hours. If testing is not performed within 8 hours, sera may be stored between 2 - 8°C, for no longer than 48 hours. If delay in testing is anticipated, store test sera at -20°C or lower	Hemolyzed, lipemic, added anti-coagulants added preservatives or bacterially contaminated sera	RDx BioScience
NA	Hemoglobin Electrophoresis-Hemoglobinopathy Evaluation	Hemoglobinopathy Evaluation	Whole Blood EDTA - Lavender Top Tube	3mL	2-5 Days	<ul style="list-style-type: none"> • If multiple draw, collect EDTA (lavender-top) tube last. • Do not spin or separate plasma, • Label all tubes with patient's name and Date of Birth 	Refrigerated	7 DAYS AT 2-8 C	Specimens received in an inappropriate collection tube Specimen quantity is insufficient No patient identifier on specimen container(s).	Sunrise Medical Laboratories
1211	Hemoglobin A1C	Hemoglobin A1C	Whole Blood EDTA - Lavender Top Tube	3mL	1-3 Days	<ul style="list-style-type: none"> • If multiple draw, collect EDTA (lavender-top) tube last. • Do not spin or separate plasma, • Label all tubes with patient's name and Date of Birth 	N/A	up to 8 hours at room temperature or up to 7 days at 2 to 8°C If testing will be delayed more than 7 days, store at -70°C or colder.	Specimens received in an inappropriate collection tube Specimen quantity is insufficient No patient identifier on specimen container(s).	RDx BioScience
1211R	Hemoglobin A1c w/ reflex to Glycomark	Hemoglobin A1c w/ Reflex to Glycomark	Whole Blood EDTA - Lavender Top Tube + Serum Separator Tube	3mL Whole Blood EDTA 1mL Separated Serum	1-3 Days	<p>Whole Blood: • If multiple draw, collect EDTA (lavender-top) tube last.</p> <ul style="list-style-type: none"> • Do not spin or separate plasma, • Label all tubes with patient's name and Date of Birth <p>SST: • Allow blood to clot for 15 minutes.</p> <ul style="list-style-type: none"> • Do not allow tubes to remain unspun for > 45 minutes. • Centrifuge for 15 minutes at 2500-3000 rpm. • Label all tubes with patient's name and Date of Birth • Refrigerate (2-8°C) centrifuged specimen if it is not going to be transported or tested promptly. 	N/A	up to 8 hours at room temperature or up to 7 days at 2 to 8°C If testing will be delayed more than 7 days, store at -70°C or colder.	Specimens received in an inappropriate collection tube Specimen quantity is insufficient No patient identifier on specimen container(s).	RDx BioScience Reflex by Sunrise Medical Laboratory
1083	Hepatitis A IgG	Hepatitis A Ab, IgG	Serum - Serum Separator Tube (SST)	1.5mL	1-3 Days	<ul style="list-style-type: none"> • Allow blood to clot for 15 minutes. • Do not allow tubes to remain unspun for > 45 minutes. • Centrifuge for 15 minutes at 2500-3000 rpm. • Label all tubes with patient's name and Date of Birth • Refrigerate (2-8°C) centrifuged specimen if it is not going to be transported or tested promptly. 	N/A	Specimens may be stored on or off the clot or separator gel for <ul style="list-style-type: none"> • up to 4 days at room temperature or • up to 8 days at 2-8°C. • If testing will be delayed more than 8 days, remove serum or plasma from the clot or separator gel and store at -20°C or colder. • Avoid more than 3 freeze/thaw cycles. 	<ul style="list-style-type: none"> • heat-inactivated • pooled • grossly hemolyzed • obvious microbial contamination 	RDx BioScience
1084	Hepatitis A IgM	Hepatitis A Ab, IgM	Serum - Serum Separator Tube (SST)	1.5mL	1-3 Days	<ul style="list-style-type: none"> • Allow blood to clot for 15 minutes. • Do not allow tubes to remain unspun for > 45 minutes. • Centrifuge for 15 minutes at 2500-3000 rpm. • Label all tubes with patient's name and Date of Birth • Refrigerate (2-8°C) centrifuged specimen if it is not going to be transported or tested promptly. 	Ambient	Specimens may be stored on or off the clot, red blood cells, or separator gel. <ul style="list-style-type: none"> • up to 3 days at room temperature (study performed at 21-30°C) or • up to 7 days at 2-8°C. • If testing will be delayed more than 3 days for specimens stored at room temperature or more than 7 days for specimens stored at 2-8°C, remove serum or plasma from the clot, red blood cells, or separator gel and store at -20°C or colder. • Avoid more than three freeze/thaw cycles. 	<ul style="list-style-type: none"> • heat-inactivated • pooled • grossly hemolyzed • obvious microbial contamination 	RDx BioScience

Test Code	Test/ Panel Name	Panel Components	Specimen Required	Sp. Volume	Reported (TAT)	Collection Instructions	Shipping Temperature	Specimen Stability	Rejection Criteria	Performing Laboratory
1087	Hepatitis B Core Antibody	Hepatitis B Core Total Ab	Serum - Serum Separator Tube (SST)	1.5mL	1-3 Days	<ul style="list-style-type: none"> • Allow blood to clot for 15 minutes. • Do not allow tubes to remain unspun for > 45 minutes. • Centrifuge for 15 minutes at 2500-3000 rpm. • Label all tubes with patient's name and Date of Birth • Refrigerate (2-8°C) centrifuged specimen if it is not going to be transported or tested promptly. 	Ambient	Room temperature (study performed at 23 to 30°C) for ≤ 3 days 2-8°C for ≤ 7 days -20°C or colder not specified	<ul style="list-style-type: none"> • heat-inactivated • pooled • grossly hemolyzed • obvious microbial contamination 	RDx BioScience
1088	Hepatitis B Core Antibody IgM	Hepatitis B Core Ab, IgM	Serum - Serum Separator Tube (SST)	1.5mL	1-3 Days	<ul style="list-style-type: none"> • Allow blood to clot for 15 minutes. • Do not allow tubes to remain unspun for > 45 minutes. • Centrifuge for 15 minutes at 2500-3000 rpm. • Label all tubes with patient's name and Date of Birth • Refrigerate (2-8°C) centrifuged specimen if it is not going to be transported or tested promptly. 	Ambient	Specimens may be stored on or off the clot, red blood cells, or separator gel for <ul style="list-style-type: none"> • up to 3 days at room temperature (study performed at 24 to 30°C) or • up to 7 days at 2-8°C. • If testing will be delayed more than 3 days for specimens stored at room temperature or more than 7 days for specimens stored at 2-8°C, remove serum or plasma from the clot, red blood cells, or separator gel and store at -20°C or colder. • Avoid more than three freeze/thaw cycles 	<ul style="list-style-type: none"> • heat-inactivated • pooled • grossly hemolyzed • obvious microbial contamination 	RDx BioScience
1085	Hepatitis B Surface Antibody	Hepatitis B Surf Ab	Serum - Serum Separator Tube (SST)	1.5mL	1-3 Days	<ul style="list-style-type: none"> • Allow blood to clot for 15 minutes. • Do not allow tubes to remain unspun for > 45 minutes. • Centrifuge for 15 minutes at 2500-3000 rpm. • Label all tubes with patient's name and Date of Birth • Refrigerate (2-8°C) centrifuged specimen if it is not going to be transported or tested promptly. 	Ambient	Specimens may be stored on or off the clot, red blood cells, or separator gel for <ul style="list-style-type: none"> • up to 3 days at room temperature (study performed at 21°C to 22°C) or • up to 7 days at 2-8°C. • If testing will be delayed more than 3 days for specimens stored at room temperature or more than 7 days for specimens stored at 2-8°C, remove serum or plasma from the clot, red blood cells, or separator gel and store at -20°C or colder. • Avoid more than three freeze/thaw cycles. 	<ul style="list-style-type: none"> • heat-inactivated • pooled • grossly hemolyzed • obvious microbial contamination 	RDx BioScience
1086	Hepatitis B Surface Antigen	Hepatitis B Surf Ag	Serum - Serum Separator Tube (SST)	1.5mL	1-3 Days	<ul style="list-style-type: none"> • Allow blood to clot for 15 minutes. • Do not allow tubes to remain unspun for > 45 minutes. • Centrifuge for 15 minutes at 2500-3000 rpm. • Label all tubes with patient's name and Date of Birth • Refrigerate (2-8°C) centrifuged specimen if it is not going to be transported or tested promptly. 	Ambient	Specimens may be stored on or off the clot, red blood cells, or separator gel for up to 24 hours at room temperature 15-30°C, or for up to 6 days at 2-8°C. <ul style="list-style-type: none"> • If testing will be delayed more than 6 days, remove serum or plasma from the clot, or red blood cells, and store at -20°C or colder. • Avoid more than 3 freeze/thaw cycles. 	<ul style="list-style-type: none"> • heat-inactivated • pooled • grossly hemolyzed • obvious microbial contamination • cadaver specimens or any other body fluids 	RDx BioScience

Specimen Collection & Handling Guide 2020

Test Code	Test/ Panel Name	Panel Components	Specimen Required	Sp. Volume	Reported (TAT)	Collection Instructions	Shipping Temperature	Specimen Stability	Rejection Criteria	Performing Laboratory
1089	Hepatitis C Antibody	Hepatitis C Virus Ab	Serum - Serum Separator Tube (SST)	1.5mL	1-3 Days	<ul style="list-style-type: none"> • Allow blood to clot for 15 minutes. • Do not allow tubes to remain unspun for > 45 minutes. • Centrifuge for 15 minutes at 2500-3000 rpm. • Label all tubes with patient's name and Date of Birth • Refrigerate (2-8°C) centrifuged specimen if it is not going to be transported or tested promptly. 	N/A	<p>Specimens may be stored on or off the clot, red blood cells, or separator gel for</p> <ul style="list-style-type: none"> • up to 3 days at room temperature (study performed at 20°C to 23°C) or • up to 7 days at 2-8°C. • If testing will be delayed more than 3 days for specimens stored at room temperature or more than 7 days for specimens stored at 2-8°C, remove serum or plasma from the clot, red blood cells, or separator gel and store at -20°C or colder. • Avoid more than three freeze/thaw cycles. 	<ul style="list-style-type: none"> • heat-inactivated • pooled • grossly hemolyzed • obvious microbial contamination 	RDx BioScience
1090	HIV 1/2 Screening HIV AG/AB Screen	HIV Ag/Ab Screen	Serum - Serum Separator Tube (SST)	3mL	1-3 Days	<ul style="list-style-type: none"> • Allow blood to clot for 15 minutes. • Do not allow tubes to remain unspun for > 45 minutes. • Centrifuge for 15 minutes at 2500-3000 rpm. • Label all tubes with patient's name and Date of Birth • Refrigerate (2-8°C) centrifuged specimen if it is not going to be transported or tested promptly. 	N/A	<p>Specimens should be stored for no longer than 3 days at room temperature or 7 days at 2-8°C following specimen collection.</p> <p>If storage period greater than 7 days is anticipated, the specimen should be removed the clot, or separator gel and serum or plasma should be stored at -20°C or colder.</p> <ul style="list-style-type: none"> • Avoid more than 5 freeze/thaw cycles. 	<ul style="list-style-type: none"> • heat-inactivated • pooled • grossly hemolyzed • obvious microbial contamination 	RDx BioScience
1120	Homocysteine	Homocysteine	Serum - Serum Separator Tube (SST)	1.5mL	1-3 Days	<ul style="list-style-type: none"> • Allow blood to clot for 15 minutes. • Do not allow tubes to remain unspun for > 45 minutes. • Centrifuge for 15 minutes at 2500-3000 rpm. • Label all tubes with patient's name and Date of Birth • Refrigerate (2-8°C) centrifuged specimen if it is not going to be transported or tested promptly. 	Refrigerated	<p>On ice for ≤ 6 hours 2-8°C for ≤ 14 days ≤ -20°C or colder for ≤ 1 year</p>	<ul style="list-style-type: none"> • heat-inactivated • grossly hemolyzed • obvious microbial contamination 	RDx BioScience
1144	HSV 1 IgG	HSV gG-1 IgG	Serum - Serum Separator Tube (SST)	1.5mL	1-3 Days	<ul style="list-style-type: none"> • Allow blood to clot for 15 minutes. • Do not allow tubes to remain unspun for > 45 minutes. • Centrifuge for 15 minutes at 2500-3000 rpm. • Label all tubes with patient's name and Date of Birth • Refrigerate (2-8°C) centrifuged specimen if it is not going to be transported or tested promptly. 	N/A	<p>Store sample at room temperature for no longer than 8 hours. If testing is not performed within 8 hours, sera may be stored between 2 - 8°C, for no longer than 48 hours. If delay in testing is anticipated, store test sera at -20°C or lower. Avoid multiple freeze/thaw cycles.</p>	<p>Hemolyzed, lipemic, added anticoagulants added preservatives or bacterially contaminated sera</p>	RDx BioScience
1145	HSV 2 IgG	HSV gG-2, IgG	Serum - Serum Separator Tube (SST)	1.5mL	1-3 Days	<ul style="list-style-type: none"> • Allow blood to clot for 15 minutes. • Do not allow tubes to remain unspun for > 45 minutes. • Centrifuge for 15 minutes at 2500-3000 rpm. • Label all tubes with patient's name and Date of Birth • Refrigerate (2-8°C) centrifuged specimen if it is not going to be transported or tested promptly. 	N/A	<p>Store sample at room temperature for no longer than 8 hours. If testing is not performed within 8 hours, sera may be stored between 2 - 8°C, for no longer than 48 hours. If delay in testing is anticipated, store test sera at -20°C or lower. Avoid multiple freeze/thaw cycles.</p>	<p>Hemolyzed, lipemic, added anticoagulants added preservatives or bacterially contaminated sera</p>	RDx BioScience

Test Code	Test/ Panel Name	Panel Components	Specimen Required	Sp. Volume	Reported (TAT)	Collection Instructions	Shipping Temperature	Specimen Stability	Rejection Criteria	Performing Laboratory
2138	HSV 1/2 IgM	HSV-1 & 2 IgM	Serum - Serum Separator Tube (SST)	1.5mL	1-3 Days	<ul style="list-style-type: none"> •Allow blood to clot for 15 minutes. •Do not allow tubes to remain unspun for > 45 minutes. •Centrifuge for 15 minutes at 2500-3000 rpm. •Label all tubes with patient's name and Date of Birth •Refrigerate (2-8°C) centrifuged specimen if it is not going to be transported or tested promptly. 	N/A	Store sample at room temperature for no longer than 8 hours. If testing is not performed within 8 hours, sera may be stored between 2 - 8°C, for no longer than 48 hours. If delay in testing is anticipated, store test sera at -20°C or lower. Avoid multiple freeze/thaw cycles.	Hemolyzed, lipemic, added anti-coagulants added preservatives or bacterially contaminated sera	RDx BioScience
1220	IgE Total	IgE Total	Serum - Serum Separator Tube (SST)	0.5mL	1-3 Days	Specimen Preparation: Allow specimen to clot completely at room temperature . Separate serum from cells ASAP or within 2 hours of collection. *Label all tubes with patient's name and Date of Birth, all Transfer tubes must be labeled with contents, i.e. Serum, Plasma etc.*	Refrigerate	Separated Serum - Refrigerated 7 Days	Hemolyzed Serum, Unspun Serum, improper collection, Out of stability	RDx BioScience
1034	Immunoglobulin A	Immunoglobulin A	Serum - Serum Separator Tube (SST) or No Gel Separator Red Top Tube	0.5mL	1-3 Days	Specimen Preparation: Allow specimen to clot completely at room temperature . Separate serum from cells ASAP or within 2 hours of collection. *Label all tubes with patient's name and Date of Birth, all Transfer tubes must be labeled with contents, i.e. Serum, Plasma etc.*	Ambient/ Refrigerate	Separated Serum - Ambient 8 months Refrigerated 8 Months	Hemolyzed Serum, Unspun Serum, improper collection, Out of stability	RDx BioScience
1033	Immunoglobulin G	Immunoglobulin G	Serum - Serum Separator Tube (SST) or No Gel Separator Red Top Tube	0.5mL	1-3 Days	Specimen Preparation: Allow specimen to clot completely at room temperature . Separate serum from cells ASAP or within 2 hours of collection. *Label all tubes with patient's name and Date of Birth, all Transfer tubes must be labeled with contents, i.e. Serum, Plasma etc.*	Ambient/ Refrigerate	Separated Serum - Ambient 4 months Refrigerated 8 Months	Hemolyzed Serum, Unspun Serum, improper collection, Out of stability	RDx BioScience
1035	Immunoglobulin M	Immunoglobulin M	Serum - Serum Separator Tube (SST) or No Gel Separator Red Top Tube	0.5mL	1-3 Days	Specimen Preparation: Allow specimen to clot completely at room temperature . Separate serum from cells ASAP or within 2 hours of collection. *Label all tubes with patient's name and Date of Birth, all Transfer tubes must be labeled with contents, i.e. Serum, Plasma etc.*	Ambient/ Refrigerate	Separated Serum - Ambient 2 months Refrigerated 4 Months	Hemolyzed Serum, Unspun Serum, improper collection, Out of stability	RDx BioScience
1130	Insulin	Insulin	Serum - Serum Separator Tube (SST)	0.5mL	1-3 Days	Specimen Preparation: Allow specimen to clot completely at room temperature . Separate serum from cells ASAP or within 2 hours of collection. *Label all tubes with patient's name and Date of Birth, all Transfer tubes must be labeled with contents, i.e. Serum, Plasma etc.*	Frozen	Separated Serum Ambient: 8 hrs Refrigerated: 7 Days	Hemolyzed Serum, Unspun Serum, improper collection, Out of stability	RDx BioScience
5008	Iron +TIBC	Iron total UIBC TIBC Iron Saturation	Serum - Serum Separator Tube (SST)	1.0mL	1-3 Days	Specimen Preparation: Allow specimen to clot completely at room temperature . Separate serum from cells ASAP or within 2 hours of collection. *Label all tubes with patient's name and Date of Birth, all Transfer tubes must be labeled with contents, i.e. Serum, Plasma etc.*	Ambient/ Refrigerate	Separated Serum - Ambient 7 Days Refrigerated 3 weeks	Hemolyzed Serum, Unspun Serum, improper collection, Out of stability	RDx BioScience
1031	Iron, Total	Iron, Total	Serum - Serum Separator Tube (SST)	0.5mL	1-3 Days	Specimen Preparation: Allow specimen to clot completely at room temperature . Separate serum from cells ASAP or within 2 hours of collection. *Label all tubes with patient's name and Date of Birth, all Transfer tubes must be labeled with contents, i.e. Serum, Plasma etc.*	Ambient/ Refrigerate	Separated Serum - Ambient 7 Days Refrigerated 3 weeks	Hemolyzed Serum, Unspun Serum, improper collection, Out of stability	RDx BioScience
1037	LDH - Lactate Dehydrogenase	LDH - Lactate Dehydrogenase	Serum - Serum Separator Tube (SST) or No Gel Separator Red Top Tube	0.5mL	1-3 Days	Specimen Preparation: Allow specimen to clot completely at room temperature . Separate serum from cells ASAP or within 2 hours of collection. *Label all tubes with patient's name and Date of Birth, all Transfer tubes must be labeled with contents, i.e. Serum, Plasma etc.*	Ambient/ Refrigerate	Separated Serum - Ambient 7 Days Refrigerated 4 Days	Hemolyzed Serum, Unspun Serum, improper collection, Out of stability	RDx BioScience
1023	LDL Direct	LDL Direct	Serum - Serum Separator Tube (SST) or No Gel Separator Red Top Tube	0.5	1-3 Days	Specimen Preparation: Allow specimen to clot completely at room temperature . Separate serum from cells ASAP or within 2 hours of collection. *Label all tubes with patient's name and Date of Birth, all Transfer tubes must be labeled with contents, i.e. Serum, Plasma etc.*	Refrigerate	Separated Serum - Refrigerated 5 Days Frozen 3 months	Hemolyzed Serum, Unspun Serum, improper collection, Out of stability	RDx BioScience

Specimen Collection & Handling Guide 2020

Test Code	Test/ Panel Name	Panel Components	Specimen Required	Sp. Volume	Reported (TAT)	Collection Instructions	Shipping Temperature	Specimen Stability	Rejection Criteria	Performing Laboratory
SML1294	Lead	Lead	1 full unopened Whole Blood Royal Blue, Lavender Top EDTA Or Green Top Sodium Heparin	0.5mL	1-3 Days	If multiple draw, collect EDTA (lavender-top) tube last. Do not spin or separate plasma, *Label all tubes with patient's name and Date of Birth*	Ambient/ Refrigerate	Whole Blood EDTA Ambient 5 Days Refrigerated 14 Days Frozen 60 Days	Improper Collection, Out of stability	Sunrise Medical Laboratories
1102	LH	LH	Serum - Serum Separator Tube (SST)	1.0mL	1-3 Days	Specimen Preparation: Allow specimen to clot completely at room temperature . Separate serum from cells ASAP or within 2 hours of collection. *Label all tubes with patient's name and Date of Birth, all Transfer tubes must be labeled with contents, i.e. Serum, Plasma etc.*	Frozen	Separated Serum Ambient: 8 hrs Refrigerated: 7 Days	Hemolyzed Serum, Unspun Serum, improper collection, Out of stability	RDx BioScience
1025	Lipase	Lipase	Serum - Serum Separator Tube (SST) or No Gel Separator Red Top Tube	0.5mL	1-3 Days	Specimen Preparation: Allow specimen to clot completely at room temperature . Separate serum from cells ASAP or within 2 hours of collection. *Label all tubes with patient's name and Date of Birth, all Transfer tubes must be labeled with contents, i.e. Serum, Plasma etc.*	Ambient/ Refrigerate	Separated Serum - Ambient 7 Days Refrigerated 7 Days	Hemolyzed Serum, Unspun Serum, improper collection, Out of stability	RDx BioScience
1040	Lithium	Lithium	Serum - Serum Separator Tube (SST) or No Gel Separator Red Top Tube	0.5mL	1-3 Days	Specimen Preparation: Allow specimen to clot completely at room temperature . Separate serum from cells ASAP or within 2 hours of collection. *Label all tubes with patient's name and Date of Birth, all Transfer tubes must be labeled with contents, i.e. Serum, Plasma etc.*	Refrigerate	Separated Serum - Ambient 24 Hours Refrigerated 7 Days	Hemolyzed Serum, Unspun Serum, improper collection, Out of stability	RDx BioScience
1139	Lyme (B. burgdorferi) IgG/IgM	Lyme (B. burgdorferi) IgG/IgM	Serum - Serum Separator Tube (SST)	0.5mL	1-3 Days	Specimen Preparation: Allow specimen to clot completely at room temperature . Separate serum from cells ASAP or within 2 hours of collection. *Label all tubes with patient's name and Date of Birth, all Transfer tubes must be labeled with contents, i.e. Serum, Plasma etc.*	Refrigerate	Separated Serum - Ambient 8 Hours Refrigerated 48 Hours (2 Days)	Hemolyzed Serum, Unspun Serum, improper collection, Out of stability	RDx BioScience
1038	Magnesium	Magnesium	Serum - Serum Separator Tube (SST) or No Gel Separator Red Top Tube	0.5mL	1-3 Days	Specimen Preparation: Allow specimen to clot completely at room temperature . Separate serum from cells ASAP or within 2 hours of collection. *Label all tubes with patient's name and Date of Birth, all Transfer tubes must be labeled with contents, i.e. Serum, Plasma etc.*	Ambient/ Refrigerate	Separated Serum - Ambient 7 Days Refrigerated 7 Days	Hemolyzed Serum, Unspun Serum, improper collection, Out of stability	RDx BioScience
1140	Measles IgG	Measles IgG	Serum - Serum Separator Tube (SST)	0.5mL	1-3 Days	Specimen Preparation: Allow specimen to clot completely at room temperature . Separate serum from cells ASAP or within 2 hours of collection. *Label all tubes with patient's name and Date of Birth, all Transfer tubes must be labeled with contents, i.e. Serum, Plasma etc.*	Refrigerate	Separated Serum - Ambient 8 Hours Refrigerated 48 Hours (2 Days)	Hemolyzed Serum, Unspun Serum, improper collection, Out of stability	RDx BioScience
1080	Microalbumin	Microalbumin	Urine - Urine Cup, no preservatives	3-5 mL	1-3 Days	Specimen Preparation: Collect urine without preservatives in designated Urine Collection cup. Seal tightly and label specimen for transport.	Refrigerate	Urine - Refrigerated 14 Days	Improper Collection, Out of stability	RDx BioScience
1216	Mono Screen - Mononucleosis	Mono Screen - Mononucleosis	Serum - Serum Separator Tube (SST)	1.5mL	1-3 Days	Specimen Preparation: Allow specimen to clot completely at room temperature . Separate serum from cells ASAP or within 2 hours of collection. *Label all tubes with patient's name and Date of Birth, all Transfer tubes must be labeled with contents, i.e. Serum, Plasma etc.*	Refrigerate	Separated Serum - Refrigerated 48 Hours (2 Days)	Hemolyzed Serum, Unspun Serum, improper collection, Out of stability	RDx BioScience
1141	Mumps IgG	Mumps IgG	Serum - Serum Separator Tube (SST)	0.5mL	1-3 Days	Specimen Preparation: Allow specimen to clot completely at room temperature . Separate serum from cells ASAP or within 2 hours of collection. *Label all tubes with patient's name and Date of Birth, all Transfer tubes must be labeled with contents, i.e. Serum, Plasma etc.*	Refrigerate	Separated Serum - Ambient 8 Hours Refrigerated 48 Hours (2 Days)	Hemolyzed Serum, Unspun Serum, improper collection, Out of stability	RDx BioScience
1122	Myoglobin	Myoglobin	Serum - Serum Separator Tube (SST)	0.5mL	1-3 Days	Specimen Preparation: Allow specimen to clot completely at room temperature . Separate serum from cells ASAP or within 2 hours of collection. *Label all tubes with patient's name and Date of Birth, all Transfer tubes must be labeled with contents, i.e. Serum, Plasma etc.*	Frozen	Separated Serum - Ambient 8 Hours Refrigerated 7 Days	Hemolyzed Serum, Unspun Serum, improper collection, Out of stability	RDx BioScience

Test Code	Test/ Panel Name	Panel Components	Specimen Required	Sp. Volume	Reported (TAT)	Collection Instructions	Shipping Temperature	Specimen Stability	Rejection Criteria	Performing Laboratory
2127	Occult Blood	Occult Blood	Fecal Collection Tube Fresh Stool in Sample Cup	5 grams	1-3 Days	Fecal samples should be collected using disposable gloves. Specimen should not be collected if patient has the following conditions: Menstrual Bleeding, Bleeding Hemorrhoids, Constipation Bleeding, Urinary Bleeding. Follow collection instructions on Fecal Collection Tube packaging.	Ambient/ Refrigerate	Fecal Collection Tube Ambient 14 Days Refrigerated 6 months	Frozen, improper collection, out of stability	RDx BioScience
1115	Phenobarbital	Phenobarbital	Serum - No Gel Barrier Red Top Tube	0.5mL	1-3 Days	Specimen Preparation: Allow specimen to clot completely at room temperature . Separate serum from cells ASAP or within 2 hours of collection. *Label all tubes with patient's name and Date of Birth, all Transfer tubes must be labeled with contents, i.e. Serum, Plasma etc.*	Ambient/ Refrigerate	Separated Serum - Ambient 2 Days Refrigerated 8 Days	Hemolyzed Serum, Unspun Serum, improper collection, Out of stability	RDx BioScience
1039	Phosphorus	Phosphorus	Serum - Serum Separator Tube (SST) or No Gel Separator Red Top Tube	0.5mL	1-3 Days	Specimen Preparation: Allow specimen to clot completely at room temperature . Separate serum from cells ASAP or within 2 hours of collection. *Label all tubes with patient's name and Date of Birth, all Transfer tubes must be labeled with contents, i.e. Serum, Plasma etc.*	Refrigerate	Separated Serum - Ambient 24 Hours Refrigerated 4 Days	Hemolyzed Serum, Unspun Serum, improper collection, Out of stability	RDx BioScience
1014	Potassium	Potassium	Serum - Serum Separator Tube (SST) or No Gel Separator Red Top Tube	0.5mL	1-3 Days	Specimen Preparation: Patient should avoid exercise of arm or hand before and during collection. Allow specimen to clot completely at room temperature . Separate serum from cells ASAP or within 2 hours of collection. *Label all tubes with patient's name and Date of Birth, all Transfer tubes must be labeled with contents, i.e. Serum, Plasma etc.*	Ambient/ Refrigerate	Separated Serum - Ambient 7 Days Refrigerated 7 Days	Hemolyzed Serum, Unspun Serum, improper collection, Out of stability	RDx BioScience
1100	Progesterone	Progesterone	Serum - Serum Separator Tube (SST)	0.5mL	1-3 Days	Specimen Preparation: Allow specimen to clot completely at room temperature . Separate serum from cells or gel barrier ASAP or within 2 hours of collection. *Label all tubes with patient's name and Date of Birth, all Transfer tubes must be labeled with contents, i.e. Serum, Plasma etc.*	Frozen	Separated Serum Ambient: 8 hrs Refrigerated: 7 Days	Hemolyzed Serum, Lipemic serum, Unspun Serum, improper collection, out of stability	RDx BioScience
1101	Prolactin	Prolactin	Serum - Serum Separator Tube (SST)	0.5mL	1-3 Days	Specimen Preparation: Allow specimen to clot completely at room temperature . Separate serum from cells or gel barrier ASAP or within 2 hours of collection. *Label all tubes with patient's name and Date of Birth, all Transfer tubes must be labeled with contents, i.e. Serum, Plasma etc.*	Frozen	Separated Serum Ambient: 8 hrs Refrigerated: 7 Days	Hemolyzed Serum, Unspun Serum, improper collection, Out of stability	RDx BioScience
1015	Protein, Total	Protein, Total	Serum - Serum Separator Tube (SST) or No Gel Separator Red Top Tube	0.5mL	1-3 Days	Specimen Preparation: Allow specimen to clot completely at room temperature . Separate serum from cells or gel barrier ASAP or within 2 hours of collection. *Label all tubes with patient's name and Date of Birth, all Transfer tubes must be labeled with contents, i.e. Serum, Plasma etc.*	Ambient/ Refrigerate	Separated Serum - Ambient 7 Days Refrigerated 30 Days	Hemolyzed Serum, Unspun Serum, improper collection, Out of stability	RDx BioScience
5037	PSA Free & Total	PSA, Total Free PSA PSA, % Free	Serum - Serum Separator Tube (SST)	0.5mL	1-3 Days	Specimen Preparation: Allow specimen to clot completely at room temperature . Separate serum from cells or gel barrier ASAP or within 2 hours of collection. Aliquot separated serum into plastic transfer tube and freeze, send to laboratory on ice pack. *Label all tubes with patient's name and Date of Birth, all Transfer tubes must be labeled with contents, i.e. Serum, Plasma etc.*	Frozen	Separated Serum - Refrigerated: 7 Days	Hemolyzed Serum, Unspun Serum, improper collection, Out of stability	RDx BioScience
1104	PSA Total	PSA Total	Serum - Serum Separator Tube (SST)	0.5mL	1-3 Days	Specimen Preparation: Allow specimen to clot completely at room temperature . Separate serum from cells or gel barrier ASAP or within 2 hours of collection. Aliquot separated serum into plastic transfer tube and freeze, send to laboratory on ice pack. *Label all tubes with patient's name and Date of Birth, all Transfer tubes must be labeled with contents, i.e. Serum, Plasma etc.*	Frozen	Separated Serum - Refrigerated: 7 Days	Hemolyzed Serum, Unspun Serum, improper collection, Out of stability	RDx BioScience
1157	PT/INR	PT INR	1 full unopened Light Blue Top Tube (3.2% Sodium Citrate)	0.5mL	1 Days	Specimen Preparation: Blood should be collected in a blue-top tube containing 3.2% buffered sodium citrate. The sample should be mixed immediately by gentle inversion at least six times to ensure adequate mixing of the anticoagulant with the blood.	Ambient	Plasma- Ambient 24 Hours Frozen 2 weeks	Serum. EDTA plasma, clotted or hemolyzed specimens, out of stability	RDx BioScience
1159	PTT	PTT	1 full unopened Light Blue Top Tube (3.2% Sodium Citrate)	0.5mL	1 Days	Specimen Preparation: Blood should be collected in a blue-top tube containing 3.2% buffered sodium citrate. The sample should be mixed immediately by gentle inversion at least six times to ensure adequate mixing of the anticoagulant with the blood.	Ambient	Plasma- Ambient 4 Hours Frozen 2 Weeks	Serum. EDTA plasma, clotted or hemolyzed specimens, Out of stability	RDx BioScience

Specimen Collection & Handling Guide 2020

Test Code	Test/ Panel Name	Panel Components	Specimen Required	Sp. Volume	Reported (TAT)	Collection Instructions	Shipping Temperature	Specimen Stability	Rejection Criteria	Performing Laboratory
1129	PTH, Intact Parathyroid Hormone	PTH, Intact Parathyroid Hormone	Serum - Serum Separator Tube (SST)	0.5mL	1-3 Days	Specimen Preparation: Allow specimen to clot completely at room temperature . Separate serum from cells ASAP or within 2 hours of collection. *Label all tubes with patient's name and Date of Birth, all Transfer tubes must be labeled with contents, i.e. Serum, Plasma etc.*	Frozen	Separated Serum Ambient: 8 hrs Refrigerated: 7 Days	Hemolyzed Serum, Unspun Serum, improper collection, Out of stability	RDx BioScience
5176	Quantiferon -TB Gold Plus	Quantiferon -TB Gold Plus	QFT Kit - 4 Tubes (Gray top, Green top, Yellow Top and Purple top tubes)	1mL per tube	2-7 Days	CRITICAL ROOM TEMPERATURE 1. Collect 1mL Blood into each of the 4 separate Quantiferon Collection tubes. As 1mL tubes draw relatively slowly, keep the tube on the needle for 2-3 seconds once the tube appears to have completed filling, to ensure that the correct volume is drawn. Blood can be collecting using a syringe and 1mL transferred to each of the 4 tubes (Up-to Black Line). If a Butterfly needle is being used to collect the sample, a purge tube should be used to ensure that the tubing is filled with blood prior to the Quantiferon tubes being used. 2. Mix the tube by shaking 10 times just firmly enough to coat the enter inner surface of the tubes 3. Specimens must be maintained at room temperature and received in the laboratory within 16 hours of collection. *Label all tubes with patient's name and Date of Birth	Ambient	QFT Kit- Ambient 16 Hours Harvest plasma form incubated specimen: Refrigerated 28 Days	Improper Collection, samples past 16 Hours and not inbuated are out of stability	RDx BioScience
1196	Reticulocyte Count	Reticulocyte Count	1 full unopened Whole Blood EDTA - Lavender Top Tube	0.5mL	1-3 Days	If multiple draw, collect EDTA (lavender-top) tube last. Do not spin or separate plasma, *Label all tubes with patient's name and Date of Birth*	Refrigerate	Whole Blood EDTA Ambient 8 Hours Refrigerated 72 Hours	Improper Specimen Clotted blood Out of Stability	RDx BioScience
1043	Rheumatoid Factor	Rheumatoid Factor	Serum - Serum Separator Tube (SST) or No Gel Separator Red Top Tube	0.5mL	1-3 Days	Specimen Preparation: Allow specimen to clot completely at room temperature . Separate serum from cells ASAP or within 2 hours of collection. *Label all tubes with patient's name and Date of Birth, all Transfer tubes must be labeled with contents, i.e. Serum, Plasma etc.*	Refrigerate	Separated Serum Ambient 24 Hours Refrigerated 3 Days	Hemolyzed Serum, Unspun Serum, improper collection, Out of stability	RDx BioScience
1269	RPR - Rapid Plasma Reagin	RPR - Rapid Plasma Reagin	Serum - Serum Separator Tube (SST)	0.5mL	1-3 Days	Specimen Preparation: Allow specimen to clot completely at room temperature . Separate serum from cells ASAP or within 2 hours of collection. *Label all tubes with patient's name and Date of Birth, all Transfer tubes must be labeled with contents, i.e. Serum, Plasma etc.*	Refrigerate	Separated Serum Refrigerate 5 days Separated & Frozen preferred	Hemolyzed Serum, Unspun Serum, improper collection, Out of stability	RDx BioScience
1142	Rubella IgG	Rubella IgG	Serum - Serum Separator Tube (SST)	0.5mL	1-3 Days	Specimen Preparation: Allow specimen to clot completely at room temperature . Separate serum from cells ASAP or within 2 hours of collection. *Label all tubes with patient's name and Date of Birth, all Transfer tubes must be labeled with contents, i.e. Serum, Plasma etc.*	Refrigerate	Separated Serum Ambient 8 Hours Refrigerated 48 Hours (2 Days)	Hemolyzed Serum, Unspun Serum, improper collection, Out of stability	RDx BioScience
1160	Sedimentation Rate	Sedimentation Rate	1 full unopened Whole Blood EDTA - Lavender Top Tube	0.5mL	1 Days	If multiple draw, collect EDTA (lavender-top) tube last. Invert tube immediately 8 to 10 times once tube is filled at time of collection *Label all tubes with patient's name and Date of Birth* .	Refrigerate	Whole Blood EDTA Refrigerated 24 Hours	Improper Specimen Clotted blood Out of Stability	RDx BioScience
1107	Sex Hormone Binding Globulin	Sex Hormone Binding Globulin	Serum - Serum Separator Tube (SST)	0.5mL	1-3 Days	Specimen Preparation: Allow specimen to clot completely at room temperature. Separate serum from cells ASAP or within 2 hours of collection. *Label all tubes with patient's name and Date of Birth, all Transfer tubes must be labeled with contents, i.e. Serum, Plasma etc.*	Frozen	Separated Serum Ambient: 8 hrs Refrigerated: 7 Days	Hemolyzed Serum, Unspun Serum, improper collection, Out of stability	RDx BioScience
1212	Sickle Cell Screen	Sickle Cell Screen	1 full unopened Whole Blood EDTA - Lavender Top Tube	0.5mL	1-3 Days	If multiple draw, collect EDTA (lavender-top) tube last. Invert tube immediately 8 to 10 times once tube is filled at time of collection *Label all tubes with patient's name and Date of Birth* .	Refrigerate	Whole Blood EDTA Refrigerated: 1-45 Days	Improper Specimen Clotted blood Out of Stability	RDx BioScience
1016	Sodium	Sodium	Serum from SST or Plain Red top tube	1.5mL	1-3 Days	Allow serum samples to clot completely before centrifugation. Centrifuge the specimen in accordance with the manufacturer's instructions for speed and duration of centrifugation. In general, 3500 rpm for 10 minutes is required for complete separation of serum from red cells. Separate serum from cells as soon as possible.	Room Temp	Separated Serum Ambient: 2 weeks Refrigerated: 2 weeks Frozen: 1 year	Specimens received in an inappropriate collection tube Specimen quantity is insufficient No patient identifier on specimen container(s)	RDx BioScience

Test Code	Test/ Panel Name	Panel Components	Specimen Required	Sp. Volume	Reported (TAT)	Collection Instructions	Shipping Temperature	Specimen Stability	Rejection Criteria	Performing Laboratory
2033	Syphilis (T. Pallidum) IgG	Syphilis (T. Pallidum) IgG	Serum from SST or Plain Red top tube	1.5mL	1-4 Days	Allow serum samples to clot completely before centrifugation. Centrifuge the specimen in accordance with the manufacturer's instructions for speed and duration of centrifugation. In general, 3500 rpm for 10 minutes is required for complete separation of serum from red cells. Separate serum from cells as soon as possible.	Refrigerated	Separated Serum Ambient: 8 hours Refrigerated: 48 hours	CSF, plasma, or other body fluids. Contaminated, hemolyzed, or severely lipemic specimens.	RDx BioScience
1126	T3, Free	T3, Free	Serum from SST or Plain Red top tube	1.5mL	1-3 Days	Allow serum samples to clot completely before centrifugation. Centrifuge the specimen in accordance with the manufacturer's instructions for speed and duration of centrifugation. In general, 3500 rpm for 10 minutes is required for complete separation of serum from red cells. Separate serum or plasma from cells as soon as possible.	Room Temp	Separated Serum Ambient: 7 days Refrigerated: 7 days	Specimens received in an inappropriate collection tube Specimen quantity is insufficient No patient identifier on specimen container(s)	RDx BioScience
1125	T3, Total	T3, Total	Serum from SST or Plain Red top tube	1.5mL	1-3 Days	Allow serum samples to clot completely before centrifugation. Centrifuge the specimen in accordance with the manufacturer's instructions for speed and duration of centrifugation. In general, 3500 rpm for 10 minutes is required for complete separation of serum from red cells. Separate serum or plasma from cells as soon as possible.	Room Temp	Separated Serum Ambient: 7 days Refrigerated: 7 days	Specimens received in an inappropriate collection tube Specimen quantity is insufficient No patient identifier on specimen container(s)	RDx BioScience
1214	T3 Uptake	T3 Uptake	Serum from SST or Plain Red top tube	1.5mL	1-3 Days	Allow serum samples to clot completely before centrifugation. Centrifuge the specimen in accordance with the manufacturer's instructions for speed and duration of centrifugation. In general, 3500 rpm for 10 minutes is required for complete separation of serum from red cells. Separate serum or plasma from cells as soon as possible.	Room Temp	Separated Serum Ambient: 7 days Refrigerated: 7 days	Specimens received in an inappropriate collection tube Specimen quantity is insufficient No patient identifier on specimen container(s)	RDx BioScience
1127	T4, Free	T4, Free	Serum from SST or Plain Red top tube	1.5mL	1-3 Days	Allow serum samples to clot completely before centrifugation. Centrifuge the specimen in accordance with the manufacturer's instructions for speed and duration of centrifugation. In general, 3500 rpm for 10 minutes is required for complete separation of serum from red cells. Separate serum or plasma from cells as soon as possible.	Room Temp	Separated Serum Ambient: 7 days Refrigerated: 7 days	Specimens received in an inappropriate collection tube Specimen quantity is insufficient No patient identifier on specimen container(s)	RDx BioScience
1128	T4, Total	T4, Total	Serum from SST or Plain Red top tube	1.5mL	1-3 Days	Allow serum samples to clot completely before centrifugation. Centrifuge the specimen in accordance with the manufacturer's instructions for speed and duration of centrifugation. In general, 3500 rpm for 10 minutes is required for complete separation of serum from red cells. Separate serum or plasma from cells as soon as possible.	Room Temp	Separated Serum Ambient: 7 days Refrigerated: 7 days	Specimens received in an inappropriate collection tube Specimen quantity is insufficient No patient identifier on specimen container(s)	RDx BioScience
5172	Testosterone Free & Total	Testosterone Free & Total	Serum from SST or Plain Red top tube	1.5mL	1-3 Days	Allow serum samples to clot completely before centrifugation. Centrifuge the specimen in accordance with the manufacturer's instructions for speed and duration of centrifugation. In general, 3500 rpm for 10 minutes is required for complete separation of serum from red cells. Separate serum or plasma from cells as soon as possible.	Room Temp	Separated Serum Ambient: 7 days Refrigerated: 7 days	Specimens received in an inappropriate collection tube Specimen quantity is insufficient No patient identifier on specimen container(s)	Sunrise Medical Laboratories
1117	Theophylline	Theophylline	Serum from Plain red top tube Plasma from green top tubes (Lithium/heparin)	1.5mL	1-3 Days	Allow serum samples to clot completely before centrifugation. Centrifuge the specimen in accordance with the manufacturer's instructions for speed and duration of centrifugation. In general, 3500 rpm for 10 minutes is required for complete separation of serum from red cells. Separate serum or plasma from cells as soon as possible.	Room Temp	Separated Serum Ambient: 2 weeks Refrigerated: 2 weeks Frozen: 1 year	heat-inactivated, grossly hemolyzed sample, obvious microbial contamination Serum Separated Tube	RDx BioScience
1106	Testosterone Total	Testosterone Total	Serum from SST or Plain Red top tube	1.5mL	1-3 Days	Allow serum samples to clot completely before centrifugation. Centrifuge the specimen in accordance with the manufacturer's instructions for speed and duration of centrifugation. In general, 3500 rpm for 10 minutes is required for complete separation of serum from red cells. Separate serum or plasma from cells as soon as possible.	Room Temp	Separated Serum Ambient: 7 days Refrigerated: 7 days	Specimens received in an inappropriate collection tube Specimen quantity is insufficient No patient identifier on specimen container(s)	RDx BioScience

Specimen Collection & Handling Guide 2020

Test Code	Test/ Panel Name	Panel Components	Specimen Required	Sp. Volume	Reported (TAT)	Collection Instructions	Shipping Temperature	Specimen Stability	Rejection Criteria	Performing Laboratory
3063	Thyroglobulin	Thyroglobulin	Serum from SST or Plain Red top tube	1.5mL	2-5 Days	Allow serum samples to clot completely before centrifugation. Centrifuge the specimen in accordance with the manufacturer's instructions for speed and duration of centrifugation. In general, 3500 rpm for 10 minutes is required for complete separation of serum from red cells. Separate serum or plasma from cells as soon as possible.	Room Temp	Separated Serum Ambient: 7 days Refrigerated: 7 days	Specimens received in an inappropriate collection tube Specimen quantity is insufficient No patient identifier on specimen container(s)	Sunrise Medical Laboratories
1094	Thyroglobulin Antibody	Thyroglobulin Antibody	Serum from SST or Plain Red top tube	1.5mL	1-3 Days	Allow serum samples to clot completely before centrifugation. Centrifuge the specimen in accordance with the manufacturer's instructions for speed and duration of centrifugation. In general, 3500 rpm for 10 minutes is required for complete separation of serum from red cells. Separate serum or plasma from cells as soon as possible.	Room Temp	Separated Serum Ambient: 7 days Refrigerated: 7 days	Specimens received in an inappropriate collection tube Specimen quantity is insufficient No patient identifier on specimen container(s)	RDx BioScience
1095	Thyroid Peroxidase Antibody	Thyroid Peroxidase Antibody	Serum from SST or Plain Red top tube	1.5mL	1-3 Days	Allow serum samples to clot completely before centrifugation. Centrifuge the specimen in accordance with the manufacturer's instructions for speed and duration of centrifugation. In general, 3500 rpm for 10 minutes is required for complete separation of serum from red cells. Separate serum or plasma from cells as soon as possible.	Room Temp	Separated Serum Ambient: 7 days Refrigerated: 7 days	Specimens received in an inappropriate collection tube Specimen quantity is insufficient No patient identifier on specimen container(s)	RDx BioScience
1044	Transferrin	Transferrin	Serum from SST or Plain Red top tube	1.5mL	1-3 Days	Allow serum samples to clot completely before centrifugation. Centrifuge the specimen in accordance with the manufacturer's instructions for speed and duration of centrifugation. In general, 3500 rpm for 10 minutes is required for complete separation of serum from red cells. Separate serum or plasma from cells as soon as possible.	Refrigerated	Separated Serum/Plasma Refrigerated: 3 days Frozen: 6 months	Specimens received in an inappropriate collection tube Specimen quantity is insufficient No patient identifier on specimen container(s) Hemolyzed samples	RDx BioScience
1018	Triglycerides	Triglycerides	Serum from SST or Plain Red top tube	1.5mL	1-3 Days	Allow serum samples to clot completely before centrifugation. Centrifuge the specimen in accordance with the manufacturer's instructions for speed and duration of centrifugation. In general, 3500 rpm for 10 minutes is required for complete separation of serum from red cells. Separate serum or plasma from cells as soon as possible.	Refrigerated	Separated Serum Ambient: 2 days Refrigerated: 7 days Frozen: 1 year	Specimens received in an inappropriate collection tube Specimen quantity is insufficient No patient identifier on specimen container(s)	RDx BioScience
1121	Troponin I	Troponin I	Serum from SST or Plain Red top tube	1.5mL	1-3 Days	Allow serum samples to clot completely before centrifugation. Centrifuge the specimen in accordance with the manufacturer's instructions for speed and duration of centrifugation. In general, 3500 rpm for 10 minutes is required for complete separation of serum from red cells. Separate serum or plasma from cells as soon as possible.	Room Temp	Separated Serum Ambient: 7 days Refrigerated: 7 days	Specimens received in an inappropriate collection tube Specimen quantity is insufficient No patient identifier on specimen container(s)	RDx BioScience
1124	TSH	TSH	Serum from SST or Plain Red top tube	1.5mL	1-3 Days	Allow serum samples to clot completely before centrifugation. Centrifuge the specimen in accordance with the manufacturer's instructions for speed and duration of centrifugation. In general, 3500 rpm for 10 minutes is required for complete separation of serum from red cells. Separate serum or plasma from cells as soon as possible.	Room Temp	Separated Serum Ambient: 7 days Refrigerated: 7 days	Lipemic or hemolyzed samples	RDx BioScience
1045	Uric Acid	Uric Acid	Serum from SST or Plain Red top tube	1.5mL	1-3 Days	Allow serum samples to clot completely before centrifugation. Centrifuge the specimen in accordance with the manufacturer's instructions for speed and duration of centrifugation. In general, 3500 rpm for 10 minutes is required for complete separation of serum from red cells. Separate serum or plasma from cells as soon as possible.	Refrigerated	Separated Serum Ambient: 3 days Refrigerated: 7 days Frozen: 6 months	Specimens received in an inappropriate collection tube Specimen quantity is insufficient No patient identifier on specimen container(s)	RDx BioScience
5007	Urinalysis	Clarity Bilirubin,Urine Blood,Urine Color Glucose,Urine Ketones,Urine Leukocytes Esterase,Urine Nitrites PH,Urine Protein,Urine Specific Gravity Urobilinogen	Urine - Urine Cup, no preservatives	3mL	1-3 Days	Specimen Preparation: Collect urine in designated urine cup w/ screw top cap. Sample could be transferred to a Yellow Top Urinalysis Tube or sent in original sealed cup.	Refrigerated	Urine Ambient 48 hours Refrigerated preferred	Improper Collection	RDx BioScience

Test Code	Test/ Panel Name	Panel Components	Specimen Required	Sp. Volume	Reported (TAT)	Collection Instructions	Shipping Temperature	Specimen Stability	Rejection Criteria	Performing Laboratory
1290	Urine Pregnancy	Urine Pregnancy	Urine - Urine Cup, no preservatives	1mL	1-3 Days	Specimen Preparation: Collect urine in designated urine cup w/ screw top cap. A first morning urine specimen is preferred since it generally contains the highest concentration of hCG; however, urine specimens collected at any time of the day may be used.	Room Temp	Separated Serum Ambient: 2 weeks Refrigerated: 2 weeks Frozen: 1 year	Improper Collection	RDx BioScience
1118	Valproic Acid	Valproic Acid	Serum from Plain Red top tube Alternate: Plasma from Lav/ green top tube (EDTA/ heparin)	1.5mL	1-3 Days	Specimen Preparation: Allow specimen to clot completely at room temperature. Separate serum from cells ASAP or within 2 hours of collection. Transfer Separated serum into plastic transfer tube and refrigerate. Send on ice pack to laboratory. *Label all tubes with patient's name and Date of Birth, all Transfer tubes must be labeled with contents, i.e. Serum, Plasma etc.*	Refrigerated	Separated Serum Ambient: 2 days Refrigerated: 7 days Frozen: 6 months	heat-inactivated, grossly hemolyzed sample, obvious microbial contamination Serum Separated Tube	RDx BioScience
1119	Vancomycin	Vancomycin	Serum from Plain Red top tube Alternate: Plasma from green top tube (heparin)	1.5mL	1-3 Days	Specimen Preparation: Allow specimen to clot completely at room temperature. Separate serum from cells ASAP or within 2 hours of collection. Transfer Separated serum into plastic transfer tube and refrigerate. Send on ice pack to laboratory. *Label all tubes with patient's name and Date of Birth, all Transfer tubes must be labeled with contents, i.e. Serum, Plasma etc.*	Refrigerated	Separated Serum Ambient: 3 days Refrigerated: 8 days Frozen: 3 months	heat-inactivated, grossly hemolyzed sample, obvious microbial contamination Serum Separated Tube	RDx BioScience
1143	Varicella Zoster IgG	Varicella Zoster IgG	Serum - Serum Separator Tube (SST)	1.5mL	1-3 Days	Specimen Preparation: Allow specimen to clot completely at room temperature. Separate serum from cells ASAP or within 2 hours of collection. *Label all tubes with patient's name and Date of Birth, all Transfer tubes must be labeled with contents, i.e. Serum, Plasma etc.*	Room Temp	Separated Serum Ambient: 2 weeks Refrigerated: 2 weeks Frozen: 1 year	Hemolyzed Serum, Unspun Serum, improper collection.	RDx BioScience
1110	Vitamin B12	Vitamin B12	Serum from SST or Plain Red top tube	1.5mL	1-3 Days	Allow serum samples to clot completely before centrifugation. Centrifuge the specimen in accordance with the manufacturer's instructions for speed and duration of centrifugation. In general, 3500 rpm for 10 minutes is required for complete separation of serum from red cells. Separate serum or plasma from cells as soon as possible.	Room Temp	Separated Serum/Plasma Ambient: 7 days Refrigerated: 7 days	hemolyzed samples	RDx BioScience
1131	Vitamin D, 25-Hydroxy	Vitamin D, 25-Hydroxy	Serum from SST or Plain Red top tube	1.5mL	1-3 Days	Allow serum samples to clot completely before centrifugation. Centrifuge the specimen in accordance with the manufacturer's instructions for speed and duration of centrifugation. In general, 3500 rpm for 10 minutes is required for complete separation of serum from red cells. Separate serum or plasma from cells as soon as possible.	Room Temp	Separated Serum/Plasma Ambient: 7 days Refrigerated: 7 days	grossly lipemic and hemolyzed samples	RDx BioScience
SML3023	Vitamin D 1-25-di-Hydroxy	Vitamin D 1-25-di-Hydroxy	Serum - Serum Separator Tube (SST)	1.5mL	2-5 Days	Specimen Preparation: Allow specimen to clot completely at room temperature. Separate serum from cells ASAP or within 2 hours of collection. *Label all tubes with patient's name and Date of Birth, all Transfer tubes must be labeled with contents, i.e. Serum, Plasma etc.*	Room Temp	Separated Serum Ambient: 7 days Refrigerated: 2 weeks	Specimens received in an inappropriate collection tube Specimen quantity is insufficient No patient identifier on specimen container(s)	Sunrise Medical Laboratories
SML4048	C. Diff Toxins	C. Diff Toxins	Stool	5g	2-7 Days	Collect fresh stool in sterile container without preservatives. Be sure to label container with patients name and DOB matching its respective requisition.	Refrigerated	REFRIGERATED: < OR = 3 DAYS; FROZEN: > 3 DAYS	Improper Collection	Sunrise Medical Laboratories
1301	Genital Culture	Genital Culture	Submit Swab in Amies or Stuart transport media.	swab	2-7 Days	collect cervical, urethral or vaginal swab	Room Temp	Ambient - 48 Hours	Improper Collection	RDx BioScience
3006	Ova & Parasites	Ova & Parasites	Stool	3g stool	2-7 Days	Collect fresh stool in sterile container without preservatives. Be sure to label container with patients name and DOB matching its respective requisition.	Room Temp	Stool in Fixative Ambient: 6 months Refrigerated: 6 months Frozen: Unacceptable	Improper Collection	RDx BioScience

Specimen Collection & Handling Guide 2020

Test Code	Test/ Panel Name	Panel Components	Specimen Required	Sp. Volume	Reported (TAT)	Collection Instructions	Shipping Temperature	Specimen Stability	Rejection Criteria	Performing Laboratory
1306	Stool Culture	Stool Culture	Stool or Rectal Swab in Amies or Stuart Transport tube	2g or swab	2-7 Days	Collect fresh stool in sterile container without preservatives. If feces are not readily available, a rectal swab may be submitted. Preserve 5 mL stool in enteric transport media (Cary-Blair) immediately	Room Temp	Preserved Stool Ambient: 72 hours Refrigerated: 72 hours Frozen: Unacceptable	Improper Collection	RDx BioScience
1307	Throat Culture	Throat Culture	Submit swabs for GABHS culture to the laboratory as follows: • Dry in a paper envelope or • Moistened or immersed in transport medium.	swab	2-7 Days	Extend one or two sterile swabs between the tonsillar pillars and behind the uvula, avoiding the tongue, buccal mucosa, and uvula. Sweep the swabs back and forth across the posterior pharynx, tonsillar areas, and any inflamed or exudative areas. Do not obtain specimen if the epiglottis is inflamed, since sampling may trigger life-threatening respiratory obstruction.	Room Temp	Throat Swab Ambient: 72 hours Refrigerated: 72 hours Frozen: Unacceptable	Improper Collection	RDx BioScience
1308	Urine Culture	Urine Culture	Urine - Urine Cup, no preservatives	5mL Urine	2-7 Days	Specimen Preparation: Collect urine in designated urine cup w/ screw top cap. Collection cup should contain no preservatives. Make sure cup is closed and labeled properly. Every sample should match its respective requisition, with the Requisition sticker completed and/or full name and DOB	Refrigerated	Unpreserved Urine Ambient - 2 Hours Refrigerated - 24 Hours Preserved Urine Ambient - 48 Hours Refrigerated - 48 Hours Frozen: Unacceptable	Improper Collection	RDx BioScience
1310	Wound Culture	Wound Culture	Submit Swab in Anaerobic transport, or Amies, Stuart transport media.	swab	2-7 Days	Aspirate fluid: Transfer to a sterile container. Collect purulent material and transfer to a sterile tube or anaerobe transport. Use swab to collect sample	Room Temp	Ambient - 48 Hours	Improper Collection	RDx BioScience
SML5036	GC/Chlamydia DNA	GC/Chlamydia DNA	Urine - Sterile Urine Cup, no preservatives or Thin Prep	2mL Urine or Thin Prep	3-8 Days	Specimen Preparation: Collect urine in designated urine cup w/ screw top cap. Collection cup should contain no preservatives. Make sure cup is closed and labeled properly. Every sample should match its respective requisition, with the Requisition sticker completed and/or full name and DOB. or Follow Thin Prep Collection Instructions	Refrigerated	Urine must be transferred to a Aptima tube within 24 hours, once transferred sample is stable for 30 Days. Thin Prep: Ambient - 3 Weeks	Improper Collection	Sunrise Medical Laboratories
SML1829T	Gyn Thin Prep	Gyn Thin Prep	Thin Prep	1 TP	3-8 Days	Follow Thin Prep collection kit instructions	Room Temp	Ambient - 3 weeks Refrigerated - 3 weeks Frozen - unacceptable	Improper Collection	Sunrise Medical Laboratories
	GYN Thin Prep w/ Reflex HPV High Risk	GYN Thin Prep w/ Reflex HPV High Risk	Thin Prep	1 TP	3-8 Days	Follow Thin Prep collection kit instructions	Room Temp	Ambient - 3 weeks Refrigerated - 3 weeks Frozen - unacceptable	Improper Collection	Sunrise Medical Laboratories
	GYN Thin Prep w/ HPV High Risk	GYN Thin Prep w/ HPV High Risk	Thin Prep	1 TP	3-8 Days	Follow Thin Prep collection kit instructions	Room Temp	Ambient - 3 weeks Refrigerated - 3 weeks Frozen - unacceptable	Improper Collection	Sunrise Medical Laboratories
SML3012	Trichomonas Vaginalis	Trichomonas Vaginalis	Urine - Sterile Urine Cup, no preservatives	5mL	3-8 Days	Specimen Preparation: Collect urine in designated urine cup w/ screw top cap. Collection cup should contain no preservatives. Make sure cup is closed and labeled properly. Every sample should match its respective requisition, with the Requisition sticker completed and/or full name and DOB.	Refrigerated	Urine must be transferred to Aptima tube within 24 hrs. After transfer, sample is stable for 30 days.	Improper Collection	Sunrise Medical Laboratories
SML3020	Urine Cytology	Urine Cytology	Urine - Sterile Urine Cup, no preservatives	5mL	3-8 Days	Specimen Preparation: Collect urine in designated urine cup w/ screw top cap. Collection cup should contain no preservatives. Make sure cup is closed and labeled properly. Every sample should match its respective requisition, with the Requisition sticker completed and/or full name and DOB.	Refrigerated	Fresh Urine Ambient: 24 hours Refrigerated: 72 hours Frozen: unacceptable	Frozen Urine sample	Sunrise Medical Laboratories

Test Code	Test/ Panel Name	Panel Components	Specimen Required	Sp. Volume	Reported (TAT)	Collection Instructions	Shipping Temperature	Specimen Stability	Rejection Criteria	Performing Laboratory
5080	Specimen Validity	Creatinine, pH, Specific Gravity, Oxidants	Urine Cup, no preservatives	5mL	2-3 Days	Collect urine in designated urine cup w/ screw top cap. Collection cup should contain no preservatives. Ensure the cup is closed and labeled properly. With at least two patient identifiers.	Ambient	Refrigerated 14 Days from date of collection	Improper Collection, Unlabeled Specimen, Mismatched Specimen, Leaked in Transit, Samples received 14 Days after collection.	RDx BioScience
5031N	Presumptive Drug Screen	Ethyl Glucuronide (ETG), Amphetamine and Methamphetamine, Barbiturates, Benzodiazepines, THC (Cannabinoids), Cocaine, Methadone, Opiates, Phencyclidine (PCP),	Urine Cup, no preservatives	5mL	2-3 Days	Collect urine in designated urine cup w/ screw top cap. Collection cup should contain no preservatives. Ensure the cup is closed and labeled properly. With at least two patient identifiers.	Ambient	Refrigerated 14 Days from date of collection	Improper Collection, Unlabeled Specimen, Mismatched Specimen, Leaked in Transit, Samples received 14 Days after collection.	RDx BioScience
5031A	Presumptive Drug Screen w/ reflex to all positive and prescribed medications	Ethyl Glucuronide (ETG), Amphetamine and Methamphetamine, Barbiturates, Benzodiazepines, THC (Cannabinoids), Cocaine, Methadone, Opiates, Phencyclidine (PCP),	Urine Cup, no preservatives	5mL	2-3 Days	Collect urine in designated urine cup w/ screw top cap. Collection cup should contain no preservatives. Ensure the cup is closed and labeled properly. With at least two patient identifiers.	Ambient	Refrigerated 14 Days from date of collection	Improper Collection, Unlabeled Specimen, Mismatched Specimen, Leaked in Transit, Samples received 14 Days after collection.	RDx BioScience
5031OF	Presumptive Drug Screen w/ reflex to all positive and prescribed medications	Ethanol Amphetamine and Methamphetamine, Benzodiazepines, THC (Cannabinoids), Cocaine, Methadone, Opiates, Phencyclidine (PCP),	Oral Fluid Collection Device	5mL	3-4 Days	Follow Instructions provided with Collection Device. Ensure the tube is closed and labeled properly. With at least two patient identifiers.	Ambient	Refrigerated 14 Days from date of collection	Improper Collection, Unlabeled Specimen, Mismatched Specimen, Leaked in Transit, Samples received 14 Days after collection.	RDx BioScience
5083X	Full Definitive LC-MS/MS Confirmatory	Alcohol, Anticonvulsants, Antidepressants, Antipsychotics, Barbiturates, Benzodiazepines, Illicit, Illicit-Synthetics, Muscle Relaxants, Opiates/Opioids, Opioids-Synthetic, Sedative Hypnotics, Stimulants	Urine Cup, no preservatives	5mL	2-3 Days	Collect urine in designated urine cup w/ screw top cap. Collection cup should contain no preservatives. Ensure the cup is closed and labeled properly. With at least two patient identifiers.	Ambient	Refrigerated 14 Days from date of collection	Improper Collection, Unlabeled Specimen, Mismatched Specimen, Leaked in Transit, Samples received 14 Days after collection.	RDx BioScience
5084	Full Definitive LC-MS/MS Confirmatory	Alcohol, Anticonvulsants, Antidepressants, Antipsychotics, Benzodiazepines, Illicit, Illicit-Synthetics, Muscle Relaxants, Opiates/Opioids, Opioids-Synthetic, Sedative Hypnotics, Stimulants	Oral Fluid Collection Device	5mL	3-4 Days	Collect urine in designated urine cup w/ screw top cap. Collection cup should contain no preservatives. Ensure the cup is closed and labeled properly. With at least two patient identifiers.	Ambient	Refrigerated 14 Days from date of collection	Improper Collection, Unlabeled Specimen, Mismatched Specimen, Leaked in Transit, Samples received 14 Days after collection.	RDx BioScience
5051	Definitive Confirmatory of Anticonvulsants	Gabapentin, Lamotrigine, Oxcarbazepine, 10-11-Dihydro-10-Hydroxycarbamazepine, Pregabalin, Topiramate, Zonisamide, Phenytoin (Dilantin), Carbamazepine	Urine Cup, no preservatives	5mL	2-3 Days	Collect urine in designated urine cup w/ screw top cap. Collection cup should contain no preservatives. Ensure the cup is closed and labeled properly. With at least two patient identifiers.	Ambient	Refrigerated 14 Days from date of collection	Improper Collection, Unlabeled Specimen, Mismatched Specimen, Leaked in Transit, Samples received 14 Days after collection.	RDx BioScience

Test Code	Test/ Panel Name	Panel Components	Specimen Required	Sp. Volume	Reported (TAT)	Collection Instructions	Shipping Temperature	Specimen Stability	Rejection Criteria	Performing Laboratory
5053	Definitive Confirmatory of Antidepressants	Amitriptyline, Atomoxetine, Bupropion, Hydroxybupropion, Desipramine, Doxepin, Desmethyl Doxepin, Duloxetine, Fluoxetine, Norfluoxetine, Imipramine, Maprotiline, Mirtazapine, N-Desmethylmirtazapine, N-Desmethylcitalopram, Nortriptyline, Paroxetine, Sertraline, Trazodone, Venlafaxine, Bupirone	Urine Cup, no preservatives	5mL	2-3 Days	Collect urine in designated urine cup w/ screw top cap. Collection cup should contain no preservatives. Ensure the cup is closed and labeled properly. With at least two patient identifiers.	Ambient	Refrigerated 14 Days from date of collection	Improper Collection, Unlabeled Specimen, Mismatched Specimen, Leaked in Transit, Samples received 14 Days after collection.	RDx BioScience
5055	Definitive Confirmatory of Antipsychotics	Aripiprazole, Haloperidol, Olanzapine, Desmethylolanzapine, Quetiapine, 7-Hydroxyquetiapine, Norquetiapine	Urine Cup, no preservatives	5mL	2-3 Days	Collect urine in designated urine cup w/ screw top cap. Collection cup should contain no preservatives. Ensure the cup is closed and labeled properly. With at least two patient identifiers.	Ambient	Refrigerated 14 Days from date of collection	Improper Collection, Unlabeled Specimen, Mismatched Specimen, Leaked in Transit, Samples received 14 Days after collection.	RDx BioScience
5056	Definitive Confirmatory of Barbituates	Butalbital, Phenobarbital, Secobarbital	Urine Cup, no preservatives	5mL	2-3 Days	Collect urine in designated urine cup w/ screw top cap. Collection cup should contain no preservatives. Ensure the cup is closed and labeled properly. With at least two patient identifiers.	Ambient	Refrigerated 14 Days from date of collection	Improper Collection, Unlabeled Specimen, Mismatched Specimen, Leaked in Transit, Samples received 14 Days after collection.	RDx BioScience
5057	Definitive Confirmatory of Benzodiazepines	7-AminoClonazepam, 7-Aminoflunitrazepam, Alpha-Hydroxymidazolam, Alpha-Hydroxytriazolam*, Alprazolam, Alpha-Hydroxyalprazolam, Chlordiazepoxide*, Flurazepam, 2-Hydroxyethylflurazepam, Lorazepam, Nordiazepam, Oxazepam, Temazepam	Urine Cup, no preservatives	5mL	2-3 Days	Collect urine in designated urine cup w/ screw top cap. Collection cup should contain no preservatives. Ensure the cup is closed and labeled properly. With at least two patient identifiers.	Ambient	Refrigerated 14 Days from date of collection	Improper Collection, Unlabeled Specimen, Mismatched Specimen, Leaked in Transit, Samples received 14 Days after collection.	RDx BioScience
5059	Definitive Confirmatory of Illicits	6MAM (Heroin Metabolite), Cocaine, Benzoyllecgonine (Cocaine), Ketamine, Nor-ketamine, MDA, MDEA, MDMA (Ecstasy), Methamphetamine, Phencyclidine, Psilocin (Mushroom), cTHC	Urine Cup, no preservatives	5mL	2-3 Days	Collect urine in designated urine cup w/ screw top cap. Collection cup should contain no preservatives. Ensure the cup is closed and labeled properly. With at least two patient identifiers.	Ambient	Refrigerated 14 Days from date of collection	Improper Collection, Unlabeled Specimen, Mismatched Specimen, Leaked in Transit, Samples received 14 Days after collection.	RDx BioScience
5061	Definitive Confirmatory of Synthetic Illicits	Alpha PVP, Butylone, Ethylone, MDPV, Methedrone, Methyline, Naphyrone, JWH 210, JWH 122, JWH 250, Mitragynine (Kratom)	Urine Cup, no preservatives	5mL	2-3 Days	Collect urine in designated urine cup w/ screw top cap. Collection cup should contain no preservatives. Ensure the cup is closed and labeled properly. With at least two patient identifiers.	Ambient	Refrigerated 14 Days from date of collection	Improper Collection, Unlabeled Specimen, Mismatched Specimen, Leaked in Transit, Samples received 14 Days after collection.	RDx BioScience
5065	Definitive Confirmatory of Muscle Relaxants	Carisoprodol, Cyclobenzaprine, Meprobamate	Urine Cup, no preservatives	5mL	2-3 Days	Collect urine in designated urine cup w/ screw top cap. Collection cup should contain no preservatives. Ensure the cup is closed and labeled properly. With at least two patient identifiers.	Ambient	Refrigerated 14 Days from date of collection	Improper Collection, Unlabeled Specimen, Mismatched Specimen, Leaked in Transit, Samples received 14 Days after collection.	RDx BioScience
5067	Definitive Confirmatory of Opiates/Opioids	Codeine, Morphine, Hydrocodone, Norhydrocodone, Hydromorphone, Oxycodone, Noroxycodone, Oxymorphone	Urine Cup, no preservatives	5mL	2-3 Days	Collect urine in designated urine cup w/ screw top cap. Collection cup should contain no preservatives. Ensure the cup is closed and labeled properly. With at least two patient identifiers.	Ambient	Refrigerated 14 Days from date of collection	Improper Collection, Unlabeled Specimen, Mismatched Specimen, Leaked in Transit, Samples received 14 Days after collection.	RDx BioScience

Test Code	Test/ Panel Name	Panel Components	Specimen Required	Sp. Volume	Reported (TAT)	Collection Instructions	Shipping Temperature	Specimen Stability	Rejection Criteria	Performing Laboratory
5071	Definitive Confirmatory of Synthetic Opioids	Beta Naltrexol, Buprenorphine, Norbuprenorphine, Demerol (Meperidine), Nordemol, Dextromethorphan, Dextrorphan, Fentanyl, Norfentanyl, Methadone, EDDP, Naloxone, Naltrexone (Vivitrol), Propoxyphene*, Tramadol, O-Desmethyl-Tramadol, Tapentadol, Desmethyl(Tapentadol) * Not available for Oral Fluid	Urine Cup, no preservatives	5mL	2-3 Days	Collect urine in designated urine cup w/ screw top cap. Collection cup should contain no preservatives. Ensure the cup is closed and labeled properly. With at least two pateint identifiers.	Ambient	Refrigerated 14 Days from date of collection	Improper Collection, Unlabeled Specimen, Mismatched Specimen, Leaked in Transit, Samples recieved 14 Days after collection.	RDx BioScience
5076	Definitive Confirmatory of Sedative Hypnotics	Zaleplon, Zolpidem, Zopiclone/ Eszopiclone, Promethazine	Urine Cup, no preservatives	5mL	2-3 Days	Collect urine in designated urine cup w/ screw top cap. Collection cup should contain no preservatives. Ensure the cup is closed and labeled properly. With at least two pateint identifiers.	Ambient	Refrigerated 14 Days from date of collection	Improper Collection, Unlabeled Specimen, Mismatched Specimen, Leaked in Transit, Samples recieved 14 Days after collection.	RDx BioScience
5078	Definitive Confirmatory of Stimulants	Amphetamine, Ephedrine, Methyphenidate (Ritalin), Ritalinic Acid, Phentermine	Urine Cup, no preservatives	5mL	2-3 Days	Collect urine in designated urine cup w/ screw top cap. Collection cup should contain no preservatives. Ensure the cup is closed and labeled properly. With at least two pateint identifiers.	Ambient	Refrigerated 14 Days from date of collection	Improper Collection, Unlabeled Specimen, Mismatched Specimen, Leaked in Transit, Samples recieved 14 Days after collection.	RDx BioScience
5051OF	Definitive Confirmatory of Anticonvulsants	Gabapentin, Lamotrigine, Pregabalin, Phenytoin (Dilantin),Carbamazepine	Oral Fluid Collection Device	5mL	3-4 Days	Follow Instructions provoded with Collection Device. Ensure the tube is closed and labeled properly. With at least two pateint identifiers.	Ambient	Refrigerated 14 Days from date of collection	Improper Collection, Unlabeled Specimen, Mismatched Specimen, Leaked in Transit, Samples recieved 14 Days after collection.	RDx BioScience
5053OF	Definitive Confirmatory of Antidepressants	Amitriptyline, Atomoxetine, Bupropion, Hydroxybupropion, Desipramine, Doxepin Desmethyl Doxepin, Duloxetine, Fluoxetine, Norfluoxetine, Imipramine, Maprotiline, Mirtazapine, Nortriptyline, Paroxetine, Sertraline, Trazodone*, Venlafaxine, Buspirone	Oral Fluid Collection Device	5mL	3-4 Days	Follow Instructions provoded with Collection Device. Ensure the tube is closed and labeled properly. With at least two pateint identifiers.	Ambient	Refrigerated 14 Days from date of collection	Improper Collection, Unlabeled Specimen, Mismatched Specimen, Leaked in Transit, Samples recieved 14 Days after collection.	RDx BioScience
5055OF	Definitive Confirmatory of Antipsychotics	Aripiprazole, Haloperidol, Olanzapine, Desmethyl-olanzapine, Quetiapine, 7-Hydroxyquetiapine, Norquetiapine	Oral Fluid Collection Device	5mL	3-4 Days	Follow Instructions provoded with Collection Device. Ensure the tube is closed and labeled properly. With at least two pateint identifiers.	Ambient	Refrigerated 14 Days from date of collection	Improper Collection, Unlabeled Specimen, Mismatched Specimen, Leaked in Transit, Samples recieved 14 Days after collection.	RDx BioScience
5057OF	Definitive Confirmatory of Benzodiazepines	7-AminoClonazepam, Alprazolam, Flurazepam, Lorazepam, Nordiazepam, Oxazepam, Temazepam	Oral Fluid Collection Device	5mL	3-4 Days	Follow Instructions provoded with Collection Device. Ensure the tube is closed and labeled properly. With at least two pateint identifiers.	Ambient	Refrigerated 14 Days from date of collection	Improper Collection, Unlabeled Specimen, Mismatched Specimen, Leaked in Transit, Samples recieved 14 Days after collection.	RDx BioScience

Specimen Collection & Handling Guide 2020

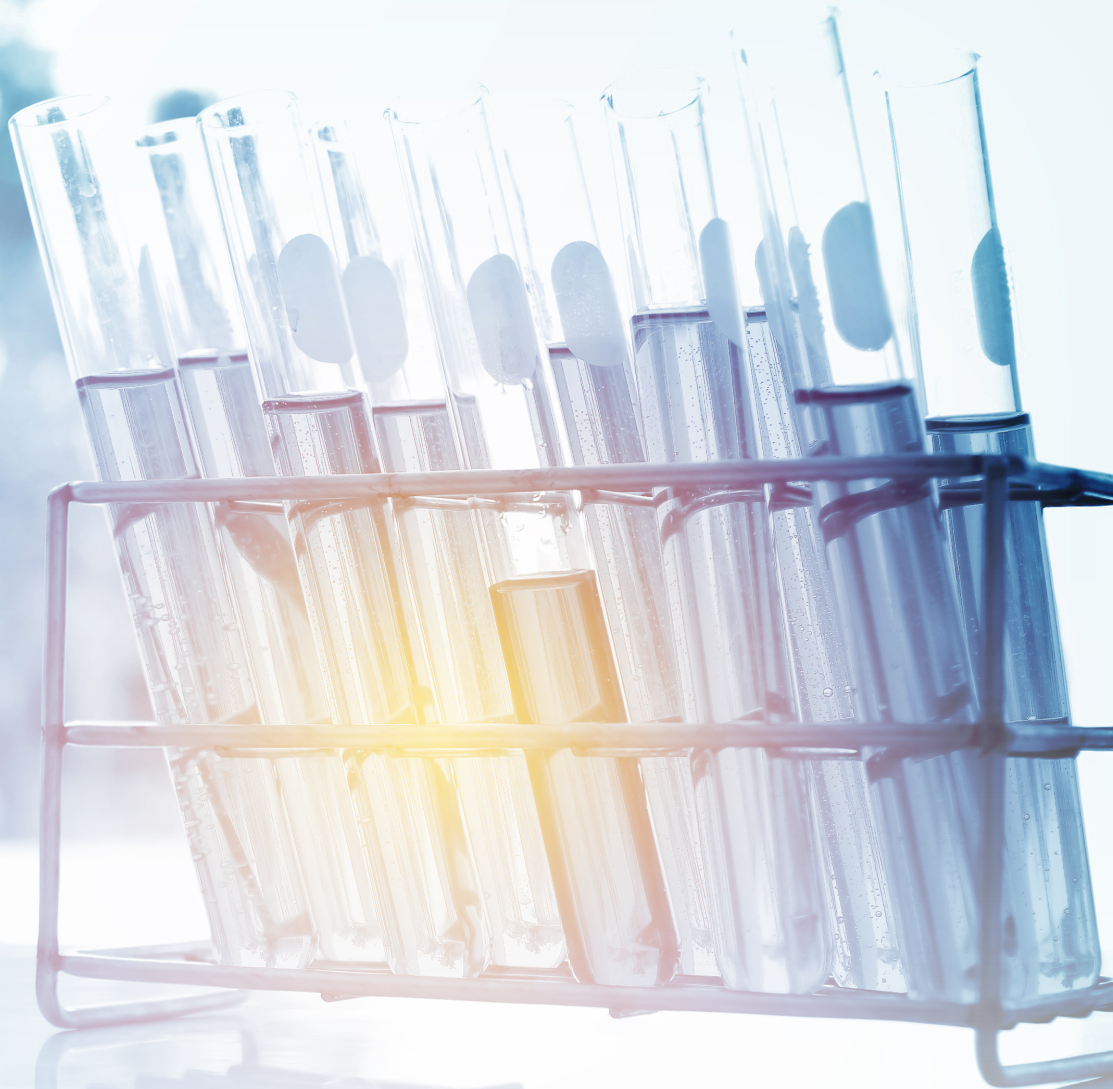
Test Code	Test/ Panel Name	Panel Components	Specimen Required	Sp. Volume	Reported (TAT)	Collection Instructions	Shipping Temperature	Specimen Stability	Rejection Criteria	Performing Laboratory
5059OF	Definitive Confirmatory of Illicits	6MAM (Heroin Metabolite), Cocaine, Benzoyllecgonine (Cocaine), Ketamine, Nor-ketamine, MDA, MDEA, MDMA (Ecstasy), Methamphetamine, Phencyclidine, cTHC	Oral Fluid Collection Device	5mL	3-4 Days	Follow Instructions provided with Collection Device. Ensure the tube is closed and labeled properly. With at least two patient identifiers.	Ambient	Refrigerated 14 Days from date of collection	Improper Collection, Unlabeled Specimen, Mismatched Specimen, Leaked in Transit, Samples received 14 Days after collection.	RDx BioScience
5061OF	Definitive Confirmatory of Synthetic Illicits	Alpha PVP, Butylone, Ethylone, MDPV, Methedrone, Methyline, Naphyrone, JWH 210, JWH 122, Mitragynine (Kratom)	Oral Fluid Collection Device	5mL	3-4 Days	Collect urine in designated urine cup w/ screw top cap. Collection cup should contain no preservatives. Ensure the cup is closed and labeled properly. With at least two patient identifiers.	Ambient	Refrigerated 14 Days from date of collection	Improper Collection, Unlabeled Specimen, Mismatched Specimen, Leaked in Transit, Samples received 14 Days after collection.	RDx BioScience
5065OF	Definitive Confirmatory of Muscle Relaxants	Carisoprodol, Cyclobenzaprine	Oral Fluid Collection Device	5mL	3-4 Days	Follow Instructions provided with Collection Device. Ensure the tube is closed and labeled properly. With at least two patient identifiers.	Ambient	Refrigerated 14 Days from date of collection	Improper Collection, Unlabeled Specimen, Mismatched Specimen, Leaked in Transit, Samples received 14 Days after collection.	RDx BioScience
5067OF	Definitive Confirmatory of Opiates/Opioids	Codeine, Morphine, Hydrocodone, Norhydrocodone, Hydromorphone, Oxycodone, Noroxycodone, Oxymorphone	Oral Fluid Collection Device	5mL	3-4 Days	Follow Instructions provided with Collection Device. Ensure the tube is closed and labeled properly. With at least two patient identifiers.	Ambient	Refrigerated 14 Days from date of collection	Improper Collection, Unlabeled Specimen, Mismatched Specimen, Leaked in Transit, Samples received 14 Days after collection.	RDx BioScience
5071OF	Definitive Confirmatory of Synthetic Opioids	Beta Naltrexol, Buprenorphine, Norbuprenorphine, Demerol (Meperidine), Nordemerol, Dextromethorphan, Dextrorphan, Fentanyl, Norfentanyl, Methadone, EDDP, Naloxone, Naltrexone (Vivitrol), Tramadol, Tapentadol,	Oral Fluid Collection Device	5mL	3-4 Days	Follow Instructions provided with Collection Device. Ensure the tube is closed and labeled properly. With at least two patient identifiers.	Ambient	Refrigerated 14 Days from date of collection	Improper Collection, Unlabeled Specimen, Mismatched Specimen, Leaked in Transit, Samples received 14 Days after collection.	RDx BioScience
5077OF	Definitive Confirmatory of Sedative Hypnotics	Zaleplon, Zolpidem, Promethazine	Oral Fluid Collection Device	5mL	3-4 Days	Follow Instructions provided with Collection Device. Ensure the tube is closed and labeled properly. With at least two patient identifiers.	Ambient	Refrigerated 14 Days from date of collection	Improper Collection, Unlabeled Specimen, Mismatched Specimen, Leaked in Transit, Samples received 14 Days after collection.	RDx BioScience
5078OF	Definitive Confirmatory of Stimulants	Amphetamine, Methylphenidate (Ritalin), Ritalinic Acid, Phentermine	Oral Fluid Collection Device	5mL	3-4 Days	Follow Instructions provided with Collection Device. Ensure the tube is closed and labeled properly. With at least two patient identifiers.	Ambient	Refrigerated 14 Days from date of collection	Improper Collection, Unlabeled Specimen, Mismatched Specimen, Leaked in Transit, Samples received 14 Days after collection.	RDx BioScience
1408	Cotinine	Cotinine (LC-MS/MS)	Urine Cup, no preservatives	5mL	2-3 Days	Collect urine in designated urine cup w/ screw top cap. Collection cup should contain no preservatives. Ensure the cup is closed and labeled properly. With at least two patient identifiers.	Ambient	Refrigerated 14 Days from date of collection	Improper Collection, Unlabeled Specimen, Mismatched Specimen, Leaked in Transit, Samples received 14 Days after collection.	RDx BioScience
1409	Carfentanyl	Carfentanyl (LC-MS/MS)	Urine Cup, no preservatives	5mL	2-3 Days	Collect urine in designated urine cup w/ screw top cap. Collection cup should contain no preservatives. Ensure the cup is closed and labeled properly. With at least two patient identifiers.	Ambient	Refrigerated 14 Days from date of collection	Improper Collection, Unlabeled Specimen, Mismatched Specimen, Leaked in Transit, Samples received 14 Days after collection.	RDx BioScience
1414	ETS	ETS (LC-MS/MS)	Urine Cup, no preservatives	5mL	2-3 Days	Collect urine in designated urine cup w/ screw top cap. Collection cup should contain no preservatives. Ensure the cup is closed and labeled properly. With at least two patient identifiers.	Ambient	Refrigerated 14 Days from date of collection	Improper Collection, Unlabeled Specimen, Mismatched Specimen, Leaked in Transit, Samples received 14 Days after collection.	RDx BioScience
1415	ETG	ETG (LC-MS/MS)	Urine Cup, no preservatives	5mL	2-3 Days	Collect urine in designated urine cup w/ screw top cap. Collection cup should contain no preservatives. Ensure the cup is closed and labeled properly. With at least two patient identifiers.	Ambient	Refrigerated 14 Days from date of collection	Improper Collection, Unlabeled Specimen, Mismatched Specimen, Leaked in Transit, Samples received 14 Days after collection.	RDx BioScience

Test Code	Test/ Panel Name	Panel Components	Specimen Required	Sp. Volume	Reported (TAT)	Collection Instructions	Shipping Temperature	Specimen Stability	Rejection Criteria	Performing Laboratory
1495	Zolpidem	Zolpidem (LC-MS/MS)	Urine Cup, no preservatives	5mL	2-3 Days	Collect urine in designated urine cup w/ screw top cap. Collection cup should contain no preservatives. Ensure the cup is closed and labeled properly. With at least two patient identifiers.	Ambient	Refrigerated 14 Days from date of collection	Improper Collection, Unlabeled Specimen, Mismatched Specimen, Leaked in Transit, Samples received 14 Days after collection.	RDx BioScience
1496	Zopiclone/Eszopiclone	Zopiclone/Eszopiclone (LC-MS/MS)	Urine Cup, no preservatives	5mL	2-3 Days	Collect urine in designated urine cup w/ screw top cap. Collection cup should contain no preservatives. Ensure the cup is closed and labeled properly. With at least two patient identifiers.	Ambient	Refrigerated 14 Days from date of collection	Improper Collection, Unlabeled Specimen, Mismatched Specimen, Leaked in Transit, Samples received 14 Days after collection.	RDx BioScience
1497	Barbiturates	Barbiturates (LC-MS/MS)	Urine Cup, no preservatives	5mL	2-3 Days	Collect urine in designated urine cup w/ screw top cap. Collection cup should contain no preservatives. Ensure the cup is closed and labeled properly. With at least two patient identifiers.	Ambient	Refrigerated 14 Days from date of collection	Improper Collection, Unlabeled Specimen, Mismatched Specimen, Leaked in Transit, Samples received 14 Days after collection.	RDx BioScience
1498	Butalbital	Butalbital (LC-MS/MS)	Urine Cup, no preservatives	5mL	2-3 Days	Collect urine in designated urine cup w/ screw top cap. Collection cup should contain no preservatives. Ensure the cup is closed and labeled properly. With at least two patient identifiers.	Ambient	Refrigerated 14 Days from date of collection	Improper Collection, Unlabeled Specimen, Mismatched Specimen, Leaked in Transit, Samples received 14 Days after collection.	RDx BioScience
1499	Phenobarbital	Phenobarbital (LC-MS/MS)	Urine Cup, no preservatives	5mL	2-3 Days	Collect urine in designated urine cup w/ screw top cap. Collection cup should contain no preservatives. Ensure the cup is closed and labeled properly. With at least two patient identifiers.	Ambient	Refrigerated 14 Days from date of collection	Improper Collection, Unlabeled Specimen, Mismatched Specimen, Leaked in Transit, Samples received 14 Days after collection.	RDx BioScience
1500	Secobarbital	Secobarbital (LC-MS/MS)	Urine Cup, no preservatives	5mL	2-3 Days	Collect urine in designated urine cup w/ screw top cap. Collection cup should contain no preservatives. Ensure the cup is closed and labeled properly. With at least two patient identifiers.	Ambient	Refrigerated 14 Days from date of collection	Improper Collection, Unlabeled Specimen, Mismatched Specimen, Leaked in Transit, Samples received 14 Days after collection.	RDx BioScience
1508	Mitragynine (Kratom)	Mitragynine (Kratom) (LC-MS/MS)	Urine Cup, no preservatives	5mL	2-3 Days	Collect urine in designated urine cup w/ screw top cap. Collection cup should contain no preservatives. Ensure the cup is closed and labeled properly. With at least two patient identifiers.	Ambient	Refrigerated 14 Days from date of collection	Improper Collection, Unlabeled Specimen, Mismatched Specimen, Leaked in Transit, Samples received 14 Days after collection.	RDx BioScience
1509	Dextromethorphan	Dextromethorphan (LC-MS/MS)	Urine Cup, no preservatives	5mL	2-3 Days	Collect urine in designated urine cup w/ screw top cap. Collection cup should contain no preservatives. Ensure the cup is closed and labeled properly. With at least two patient identifiers.	Ambient	Refrigerated 14 Days from date of collection	Improper Collection, Unlabeled Specimen, Mismatched Specimen, Leaked in Transit, Samples received 14 Days after collection.	RDx BioScience
1510	Dextropropion	Dextropropion (LC-MS/MS)	Urine Cup, no preservatives	5mL	2-3 Days	Collect urine in designated urine cup w/ screw top cap. Collection cup should contain no preservatives. Ensure the cup is closed and labeled properly. With at least two patient identifiers.	Ambient	Refrigerated 14 Days from date of collection	Improper Collection, Unlabeled Specimen, Mismatched Specimen, Leaked in Transit, Samples received 14 Days after collection.	RDx BioScience
1511	Norhydrocodone	Norhydrocodone (LC-MS/MS)	Urine Cup, no preservatives	5mL	2-3 Days	Collect urine in designated urine cup w/ screw top cap. Collection cup should contain no preservatives. Ensure the cup is closed and labeled properly. With at least two patient identifiers.	Ambient	Refrigerated 14 Days from date of collection	Improper Collection, Unlabeled Specimen, Mismatched Specimen, Leaked in Transit, Samples received 14 Days after collection.	RDx BioScience
1512	Ritalinic Acid	Ritalinic Acid (LC-MS/MS)	Urine Cup, no preservatives	5mL	2-3 Days	Collect urine in designated urine cup w/ screw top cap. Collection cup should contain no preservatives. Ensure the cup is closed and labeled properly. With at least two patient identifiers.	Ambient	Refrigerated 14 Days from date of collection	Improper Collection, Unlabeled Specimen, Mismatched Specimen, Leaked in Transit, Samples received 14 Days after collection.	RDx BioScience
1700	N-Desmethylflunitrazepam (LC-MS/MS)	N-Desmethylflunitrazepam (LC-MS/MS)	Urine Cup, no preservatives	5mL	2-3 Days	Collect urine in designated urine cup w/ screw top cap. Collection cup should contain no preservatives. Ensure the cup is closed and labeled properly. With at least two patient identifiers.	Ambient	Refrigerated 14 Days from date of collection	Improper Collection, Unlabeled Specimen, Mismatched Specimen, Leaked in Transit, Samples received 14 Days after collection.	RDx BioScience
2093	10-11-Dihydro-10-Hydroxycarbamazepine	10-11-Dihydro-10-Hydroxycarbamazepine (LC-MS/MS)	Urine Cup, no preservatives	5mL	2-3 Days	Collect urine in designated urine cup w/ screw top cap. Collection cup should contain no preservatives. Ensure the cup is closed and labeled properly. With at least two patient identifiers.	Ambient	Refrigerated 14 Days from date of collection	Improper Collection, Unlabeled Specimen, Mismatched Specimen, Leaked in Transit, Samples received 14 Days after collection.	RDx BioScience
2094	Lamotrigine (LC-MS/MS)	Lamotrigine (LC-MS/MS)	Urine Cup, no preservatives	5mL	2-3 Days	Collect urine in designated urine cup w/ screw top cap. Collection cup should contain no preservatives. Ensure the cup is closed and labeled properly. With at least two patient identifiers.	Ambient	Refrigerated 14 Days from date of collection	Improper Collection, Unlabeled Specimen, Mismatched Specimen, Leaked in Transit, Samples received 14 Days after collection.	RDx BioScience
2095	Oxcarbazepine	Oxcarbazepine (LC-MS/MS)	Urine Cup, no preservatives	5mL	2-3 Days	Collect urine in designated urine cup w/ screw top cap. Collection cup should contain no preservatives. Ensure the cup is closed and labeled properly. With at least two patient identifiers.	Ambient	Refrigerated 14 Days from date of collection	Improper Collection, Unlabeled Specimen, Mismatched Specimen, Leaked in Transit, Samples received 14 Days after collection.	RDx BioScience
2096	Tiagabine	Tiagabine (LC-MS/MS)	Urine Cup, no preservatives	5mL	2-3 Days	Collect urine in designated urine cup w/ screw top cap. Collection cup should contain no preservatives. Ensure the cup is closed and labeled properly. With at least two patient identifiers.	Ambient	Refrigerated 14 Days from date of collection	Improper Collection, Unlabeled Specimen, Mismatched Specimen, Leaked in Transit, Samples received 14 Days after collection.	RDx BioScience

Specimen Collection & Handling Guide 2020

Test Code	Test/ Panel Name	Panel Components	Specimen Required	Sp. Volume	Reported (TAT)	Collection Instructions	Shipping Temperature	Specimen Stability	Rejection Criteria	Performing Laboratory
2114	Desmethylolanzapine	Desmethylolanzapine (LC-MS/MS)	Urine Cup, no preservatives	5mL	2-3 Days	Collect urine in designated urine cup w/ screw top cap. Collection cup should contain no preservatives. Ensure the cup is closed and labeled properly. With at least two pateint identifiers.	Ambient	Refrigerated 14 Days from date of collection	Improper Collection, Unlabeled Specimen, Mismatched Specimen, Leaked in Transit, Samples recieved 14 Days after collection.	RDx BioScience
2115	Haloperidol	Haloperidol (LC-MS/MS)	Urine Cup, no preservatives	5mL	2-3 Days	Collect urine in designated urine cup w/ screw top cap. Collection cup should contain no preservatives. Ensure the cup is closed and labeled properly. With at least two pateint identifiers.	Ambient	Refrigerated 14 Days from date of collection	Improper Collection, Unlabeled Specimen, Mismatched Specimen, Leaked in Transit, Samples recieved 14 Days after collection.	RDx BioScience
2116	Lurasidone	Lurasidone (LC-MS/MS)	Urine Cup, no preservatives	5mL	2-3 Days	Collect urine in designated urine cup w/ screw top cap. Collection cup should contain no preservatives. Ensure the cup is closed and labeled properly. With at least two pateint identifiers.	Ambient	Refrigerated 14 Days from date of collection	Improper Collection, Unlabeled Specimen, Mismatched Specimen, Leaked in Transit, Samples recieved 14 Days after collection.	RDx BioScience
2117	N-Desmethylclozapine	N-Desmethylclozapine (LC-MS/MS)	Urine Cup, no preservatives	5mL	2-3 Days	Collect urine in designated urine cup w/ screw top cap. Collection cup should contain no preservatives. Ensure the cup is closed and labeled properly. With at least two pateint identifiers.	Ambient	Refrigerated 14 Days from date of collection	Improper Collection, Unlabeled Specimen, Mismatched Specimen, Leaked in Transit, Samples recieved 14 Days after collection.	RDx BioScience
2118	Norquetiapine	Norquetiapine (LC-MS/MS)	Urine Cup, no preservatives	5mL	2-3 Days	Collect urine in designated urine cup w/ screw top cap. Collection cup should contain no preservatives. Ensure the cup is closed and labeled properly. With at least two pateint identifiers.	Ambient	Refrigerated 14 Days from date of collection	Improper Collection, Unlabeled Specimen, Mismatched Specimen, Leaked in Transit, Samples recieved 14 Days after collection.	RDx BioScience
2119	Olanzapine	Olanzapine (LC-MS/MS)	Urine Cup, no preservatives	5mL	2-3 Days	Collect urine in designated urine cup w/ screw top cap. Collection cup should contain no preservatives. Ensure the cup is closed and labeled properly. With at least two pateint identifiers.	Ambient	Refrigerated 14 Days from date of collection	Improper Collection, Unlabeled Specimen, Mismatched Specimen, Leaked in Transit, Samples recieved 14 Days after collection.	RDx BioScience
2120	Quetiapine	Quetiapine (LC-MS/MS)	Urine Cup, no preservatives	5mL	2-3 Days	Collect urine in designated urine cup w/ screw top cap. Collection cup should contain no preservatives. Ensure the cup is closed and labeled properly. With at least two pateint identifiers.	Ambient	Refrigerated 14 Days from date of collection	Improper Collection, Unlabeled Specimen, Mismatched Specimen, Leaked in Transit, Samples recieved 14 Days after collection.	RDx BioScience
2122	7-Aminoflunitrazepam	7-Aminoflunitrazepam (LC-MS/MS)	Urine Cup, no preservatives	5mL	2-3 Days	Collect urine in designated urine cup w/ screw top cap. Collection cup should contain no preservatives. Ensure the cup is closed and labeled properly. With at least two pateint identifiers.	Ambient	Refrigerated 14 Days from date of collection	Improper Collection, Unlabeled Specimen, Mismatched Specimen, Leaked in Transit, Samples recieved 14 Days after collection.	RDx BioScience
2123	Alpha PVP	Alpha PVP (LC-MS/MS)	Urine Cup, no preservatives	5mL	2-3 Days	Collect urine in designated urine cup w/ screw top cap. Collection cup should contain no preservatives. Ensure the cup is closed and labeled properly. With at least two pateint identifiers.	Ambient	Refrigerated 14 Days from date of collection	Improper Collection, Unlabeled Specimen, Mismatched Specimen, Leaked in Transit, Samples recieved 14 Days after collection.	RDx BioScience
2125	Ephedrine	Ephedrine (LC-MS/MS)	Urine Cup, no preservatives	5mL	2-3 Days	Collect urine in designated urine cup w/ screw top cap. Collection cup should contain no preservatives. Ensure the cup is closed and labeled properly. With at least two pateint identifiers.	Ambient	Refrigerated 14 Days from date of collection	Improper Collection, Unlabeled Specimen, Mismatched Specimen, Leaked in Transit, Samples recieved 14 Days after collection.	RDx BioScience
2126	Phentermine	Phentermine (LC-MS/MS)	Urine Cup, no preservatives	5mL	2-3 Days	Collect urine in designated urine cup w/ screw top cap. Collection cup should contain no preservatives. Ensure the cup is closed and labeled properly. With at least two pateint identifiers.	Ambient	Refrigerated 14 Days from date of collection	Improper Collection, Unlabeled Specimen, Mismatched Specimen, Leaked in Transit, Samples recieved 14 Days after collection.	RDx BioScience
2139	Buspirone	Buspirone (LC-MS/MS)	Urine Cup, no preservatives	5mL	2-3 Days	Collect urine in designated urine cup w/ screw top cap. Collection cup should contain no preservatives. Ensure the cup is closed and labeled properly. With at least two pateint identifiers.	Ambient	Refrigerated 14 Days from date of collection	Improper Collection, Unlabeled Specimen, Mismatched Specimen, Leaked in Transit, Samples recieved 14 Days after collection.	RDx BioScience
2198	Phenytoin (Dilantin)	Phenytoin (Dilantin)- (LC-MS/MS)	Urine Cup, no preservatives	5mL	2-3 Days	Collect urine in designated urine cup w/ screw top cap. Collection cup should contain no preservatives. Ensure the cup is closed and labeled properly. With at least two pateint identifiers.	Ambient	Refrigerated 14 Days from date of collection	Improper Collection, Unlabeled Specimen, Mismatched Specimen, Leaked in Transit, Samples recieved 14 Days after collection.	RDx BioScience
2199	Promethazine	Promethazine - (LC-MS/MS)	Urine Cup, no preservatives	5mL	2-3 Days	Collect urine in designated urine cup w/ screw top cap. Collection cup should contain no preservatives. Ensure the cup is closed and labeled properly. With at least two pateint identifiers.	Ambient	Refrigerated 14 Days from date of collection	Improper Collection, Unlabeled Specimen, Mismatched Specimen, Leaked in Transit, Samples recieved 14 Days after collection.	RDx BioScience
14140	ETS (LC-MS/MS)	ETS (LC-MS/MS)	Oral Fluid Collection Device	5mL	3-4 Days	Follow Instructions provoded with Collection Device. Ensure the tube is closed and labeled properly. With at least two pateint identifiers.	Ambient	Refrigerated 14 Days from date of collection	Improper Collection, Unlabeled Specimen, Mismatched Specimen, Leaked in Transit, Samples recieved 14 Days after collection.	RDx BioScience
14150	ETG (LC-MS/MS)	ETG (LC-MS/MS)	Oral Fluid Collection Device	5mL	3-4 Days	Follow Instructions provoded with Collection Device. Ensure the tube is closed and labeled properly. With at least two pateint identifiers.	Ambient	Refrigerated 14 Days from date of collection	Improper Collection, Unlabeled Specimen, Mismatched Specimen, Leaked in Transit, Samples recieved 14 Days after collection.	RDx BioScience

Test Code	Test/ Panel Name	Panel Components	Specimen Required	Sp. Volume	Reported (TAT)	Collection Instructions	Shipping Temperature	Specimen Stability	Rejection Criteria	Performing Laboratory
2104O	N-Desmethylcitalopram-OF	N-Desmethylcitalopram (LC-MS/MS)	Oral Fluid Collection Device	5mL	3-4 Days	Follow Instructions provided with Collection Device. Ensure the tube is closed and labeled properly. With at least two patient identifiers.	Ambient	Refrigerated 14 Days from date of collection	Improper Collection, Unlabeled Specimen, Mismatched Specimen, Leaked in Transit, Samples received 14 Days after collection.	RDx BioScience
2106O	N-Desmethylmirtazapine-OF	N-Desmethylmirtazapine (LC-MS/MS)	Oral Fluid Collection Device	5mL	3-4 Days	Follow Instructions provided with Collection Device. Ensure the tube is closed and labeled properly. With at least two patient identifiers.	Ambient	Refrigerated 14 Days from date of collection	Improper Collection, Unlabeled Specimen, Mismatched Specimen, Leaked in Transit, Samples received 14 Days after collection.	RDx BioScience
2108O	Sertraline-OF	Sertraline (LC-MS/MS)	Oral Fluid Collection Device	5mL	3-4 Days	Follow Instructions provided with Collection Device. Ensure the tube is closed and labeled properly. With at least two patient identifiers.	Ambient	Refrigerated 14 Days from date of collection	Improper Collection, Unlabeled Specimen, Mismatched Specimen, Leaked in Transit, Samples received 14 Days after collection.	RDx BioScience
2110O	Vilazodone-OF	Vilazodone (LC-MS/MS)	Oral Fluid Collection Device	5mL	3-4 Days	Follow Instructions provided with Collection Device. Ensure the tube is closed and labeled properly. With at least two patient identifiers.	Ambient	Refrigerated 14 Days from date of collection	Improper Collection, Unlabeled Specimen, Mismatched Specimen, Leaked in Transit, Samples received 14 Days after collection.	RDx BioScience
2115O	Haloperidol-OF	Haloperidol (LC-MS/MS)	Oral Fluid Collection Device	5mL	3-4 Days	Follow Instructions provided with Collection Device. Ensure the tube is closed and labeled properly. With at least two patient identifiers.	Ambient	Refrigerated 14 Days from date of collection	Improper Collection, Unlabeled Specimen, Mismatched Specimen, Leaked in Transit, Samples received 14 Days after collection.	RDx BioScience
2116O	Lurasidone - OF	Lurasidone (LC-MS/MS)	Oral Fluid Collection Device	5mL	3-4 Days	Follow Instructions provided with Collection Device. Ensure the tube is closed and labeled properly. With at least two patient identifiers.	Ambient	Refrigerated 14 Days from date of collection	Improper Collection, Unlabeled Specimen, Mismatched Specimen, Leaked in Transit, Samples received 14 Days after collection.	RDx BioScience
2118O	Norquetiapine-OF	Norquetiapine (LC-MS/MS)	Oral Fluid Collection Device	5mL	3-4 Days	Follow Instructions provided with Collection Device. Ensure the tube is closed and labeled properly. With at least two patient identifiers.	Ambient	Refrigerated 14 Days from date of collection	Improper Collection, Unlabeled Specimen, Mismatched Specimen, Leaked in Transit, Samples received 14 Days after collection.	RDx BioScience
2119O	Olanzapine-OF	Olanzapine (LC-MS/MS)	Oral Fluid Collection Device	5mL	3-4 Days	Follow Instructions provided with Collection Device. Ensure the tube is closed and labeled properly. With at least two patient identifiers.	Ambient	Refrigerated 14 Days from date of collection	Improper Collection, Unlabeled Specimen, Mismatched Specimen, Leaked in Transit, Samples received 14 Days after collection.	RDx BioScience
2120O	Quetiapine-OF	Quetiapine (LC-MS/MS)	Oral Fluid Collection Device	5mL	3-4 Days	Follow Instructions provided with Collection Device. Ensure the tube is closed and labeled properly. With at least two patient identifiers.	Ambient	Refrigerated 14 Days from date of collection	Improper Collection, Unlabeled Specimen, Mismatched Specimen, Leaked in Transit, Samples received 14 Days after collection.	RDx BioScience
2123O	Alpha PVP-OF	Alpha PVP (LC-MS/MS)	Oral Fluid Collection Device	5mL	3-4 Days	Follow Instructions provided with Collection Device. Ensure the tube is closed and labeled properly. With at least two patient identifiers.	Ambient	Refrigerated 14 Days from date of collection	Improper Collection, Unlabeled Specimen, Mismatched Specimen, Leaked in Transit, Samples received 14 Days after collection.	RDx BioScience
2126O	Phentermine-OF	Phentermine (LC-MS/MS)	Oral Fluid Collection Device	5mL	3-4 Days	Follow Instructions provided with Collection Device. Ensure the tube is closed and labeled properly. With at least two patient identifiers.	Ambient	Refrigerated 14 Days from date of collection	Improper Collection, Unlabeled Specimen, Mismatched Specimen, Leaked in Transit, Samples received 14 Days after collection.	RDx BioScience
2139O	Buspirone -OF	Buspirone (LC-MS/MS)	Oral Fluid Collection Device	5mL	3-4 Days	Follow Instructions provided with Collection Device. Ensure the tube is closed and labeled properly. With at least two patient identifiers.	Ambient	Refrigerated 14 Days from date of collection	Improper Collection, Unlabeled Specimen, Mismatched Specimen, Leaked in Transit, Samples received 14 Days after collection.	RDx BioScience
2198O	Phenytoin (Dilantin)-OF	Phenytoin (Dilantin)- (LC-MS/MS)	Oral Fluid Collection Device	5mL	3-4 Days	Follow Instructions provided with Collection Device. Ensure the tube is closed and labeled properly. With at least two patient identifiers.	Ambient	Refrigerated 14 Days from date of collection	Improper Collection, Unlabeled Specimen, Mismatched Specimen, Leaked in Transit, Samples received 14 Days after collection.	RDx BioScience



629 Springfield Rd.
Kenilworth NJ 07033



1-844-762-9522



1-908-636-7522



info@rdxbioscience.com



www.rdxbioscience.com