

BEST CORNER IN UNION SQUARE



CORNER: 3,084 SQ.FT. | 96.7 FT OF FRONTAGE ON CORNER OF UNION SQUARE AND 14TH STREET | 17 FT CEILING HEIGHTS

INLINE: 4,705 SQ.FT. | 38.6 FT OF FRONTAGE ON UNION SQUARE | 17 FT CEILING HEIGHTS

10 UNION SQUARE EAST



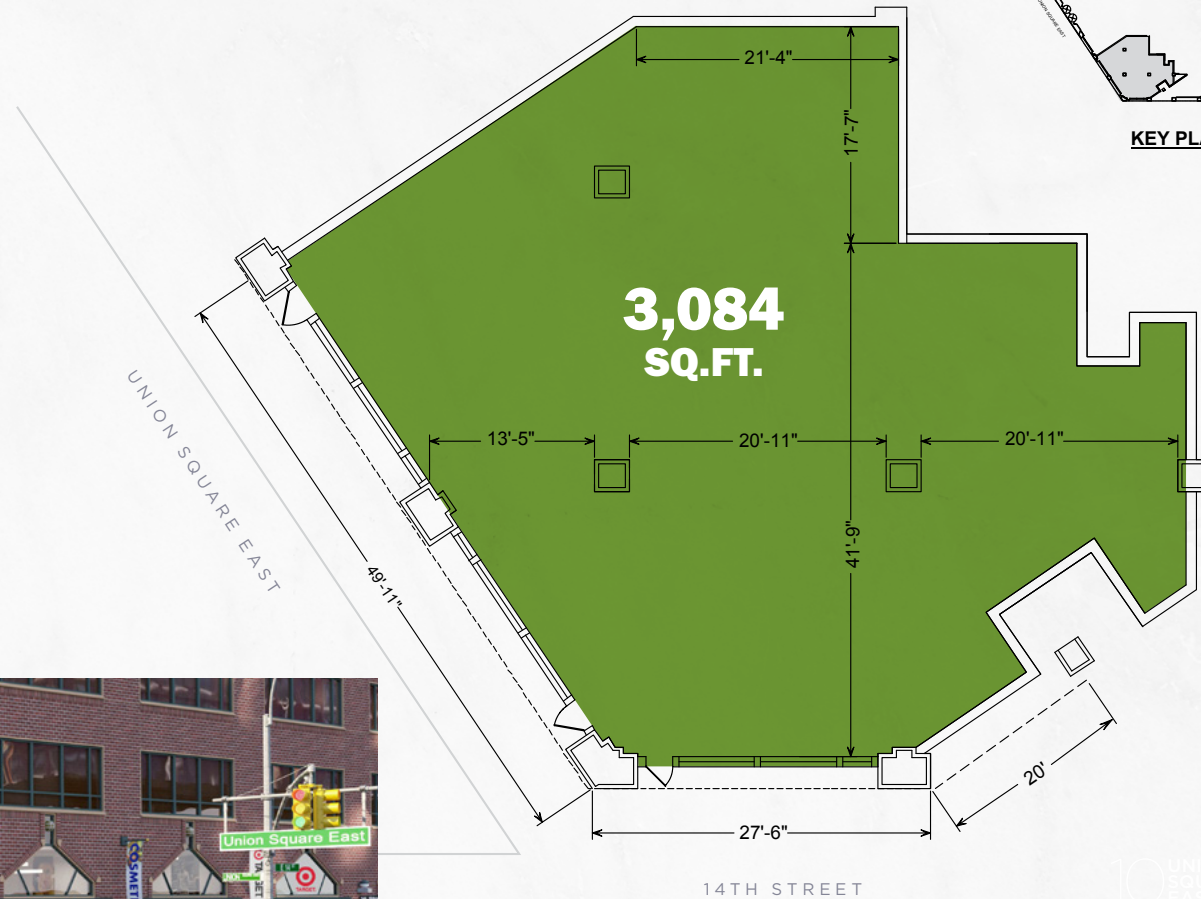
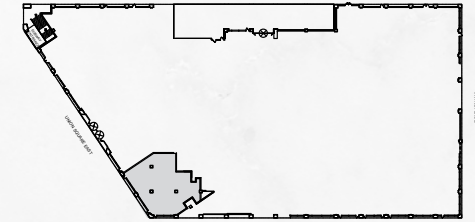
10 UNION SQUARE EAST

**3,084 SQ.FT.
AVAILABLE**

Ground Floor

- 96.7 FT of frontage on the corner of Union Square and 14th Street
- 17 FT ceiling heights

EAST 15TH STREET



10 UNION SQUARE EAST

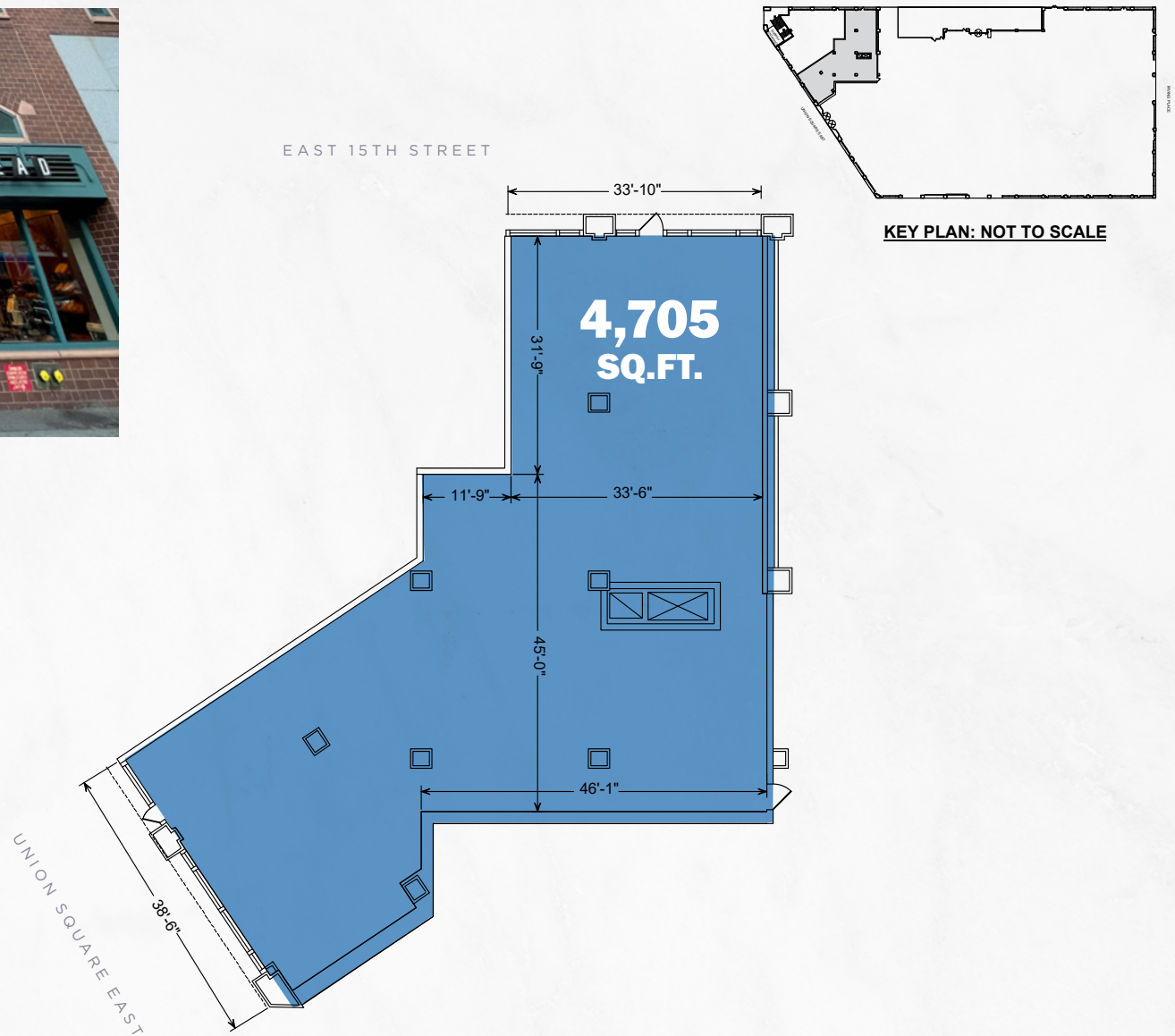
10 UNION SQUARE EAST



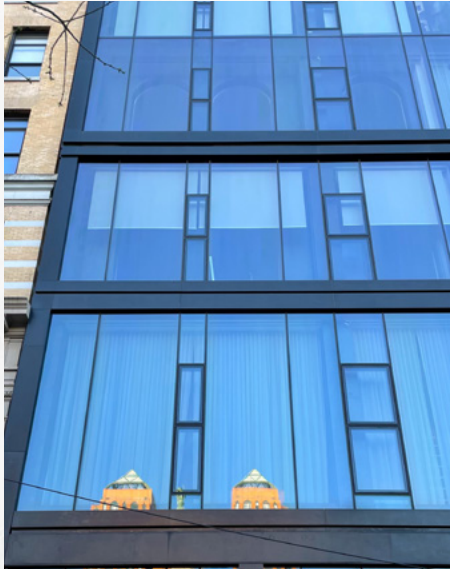
**4,705 SQ.FT.
AVAILABLE**

Ground Floor

- 38.6 FT of frontage on Union Square
- 17 FT ceiling heights



10 UNION SQUARE EAST



10 UNION SQUARE EAST

HIGHLY VISIBLE RETAIL OPPORTUNITY



350,000 daily visitors to Union Square Park
307,000 on a Greenmarket Saturday
153,000 office workers
74,000 residents
9,700 businesses



Union Square famed site of festivals, community projects, art shows and the Greenmarket farmer's market



40,000 students
606 residents at University Hall



35.3 million annual subway riders with in-building access to the 2nd busiest weekend subway station in NYC



Prime Citi Bike destination with **485** docks of **358** daily riders



DSW



NORDSTROM rack



DUANE reade



TRADER JOE'S

SEPHORA



CONTACT EXCLUSIVE AGENTS

ANDREW MANDELL

amandell@ripcony.com
212.750.6565

GENE SPIEGELMAN

gspiegelman@ripcony.com
212.750.6565

RICHARD SKULNIK

rskulnik@ripcony.com
212.750.0756

BETH ROSEN

brosen@ripcony.com
212.750.6565

MORGAN SINGER

msinger@ripcony.com
212.230.5884

FRED C. POSNIAK

fposniak@esrtreit.com
212.850.2618

100% COMMISSION ON LEASE SIGNING

RIPCO | **EMPIRE STATE**
REAL ESTATE | REALTY TRUST

RIPCO REAL ESTATE | 150 East 58th Street | 15th Floor | New York, NY 10155 | 212.750.6565 | ripcony.com

This information has been secured from sources we believe to be reliable, but we make no representations as to the accuracy of the information. References to square footage are approximate. Buyer must verify the information and bears all risk for any inaccuracies.