



*Sport Sway Bar Kit 22813  
VW Golf (GTI), Jetta*



**Thank you for your purchase from our new line of VW parts.  
Please call us at (877) 4NO - ROLL if you have any questions  
regarding the service or installation of your H-Sport products.**

***(For full size instructions in pdf format, please visit our website at [H-Sport.com](http://H-Sport.com))***

Tools required for this installation:

- 4-post lift with roller jacks or tranny jack
- The following sockets or wrenches: 12mm, 13mm, 14mm, 16mm, 17mm, 21mm, 5/8", 11/16"
- The following Allen wrenches: 6mm
- Suggested tools: 6" socket extension, swivel ratchet

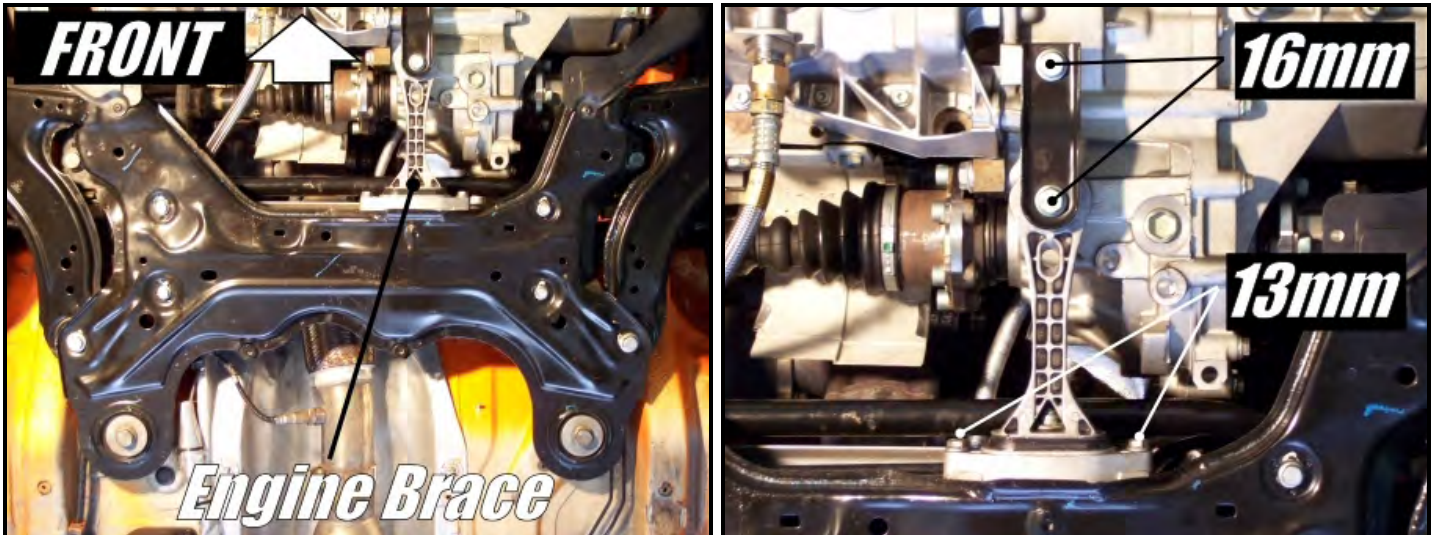
**H-Sport HIGHLY recommends that this sway bar set be installed by a professional, as the front sway bar can only be removed or installed by detaching the front subframe cradle and lowering it from the vehicle!**

### *INSTALLATION OF H-SPORT FRONT SWAY BAR*

- » Drive the vehicle on a 4-post lift. Securely block the rear wheels of the vehicle. Use jack to lift up the front of the vehicle. Do not remove the front wheels during installation for safety.
- » Remove plastic splashguard underneath the engine.
- » Take a minute and observe underneath the front of the vehicle. The front sway bar is inconveniently located in between the subframe cradle and engine. In order to remove the front sway bar, you will be

required to detach the front subframe cradle from the chassis. The subframe does NOT support the engine, so you don't have to worry about the engine falling on you once the subframe is loose.

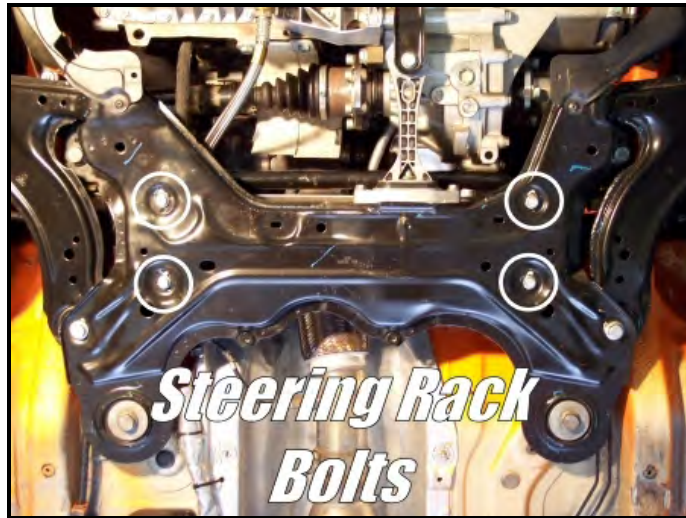
- » First, remove the lower engine brace from the subframe and engine.



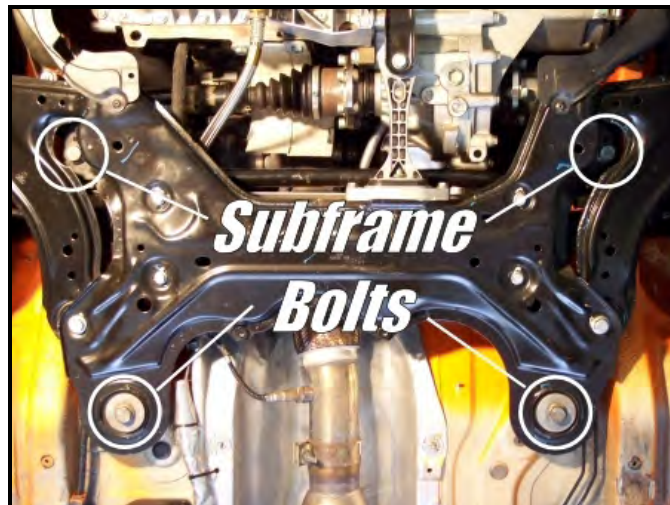
- » Next, loosen and remove the front sway bar endlinks from the control arm and swaybar ends using a 16mm wrench and/or socket. You may discard the stock endlinks and hardware.



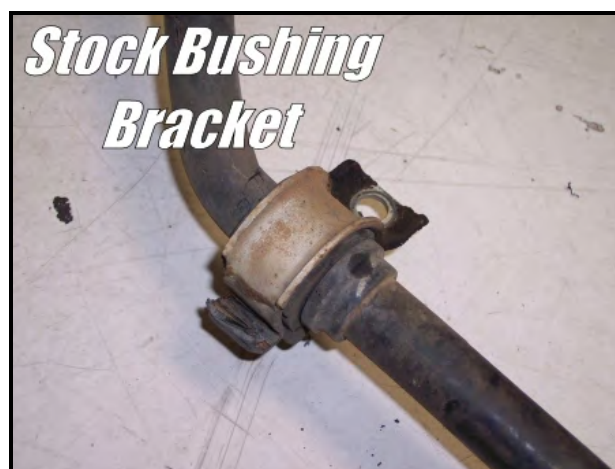
- » It is necessary to detach the steering rack from the subframe. To achieve this, remove the 4 bolts using a 13mm socket.



- » Now, remove the 4 large bolts that secure the subframe cradle to the body using a 21mm socket. The subframe should droop down slightly. The subframe droop down slightly (5-6 inches), but it might fall rather quickly, so be careful.

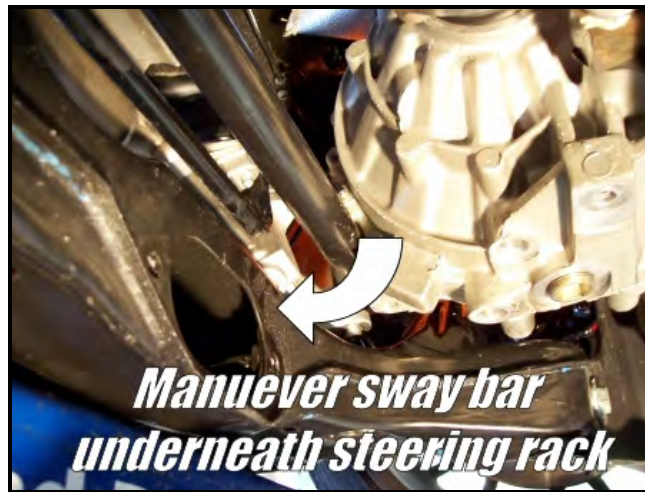


- » With the addition clearance, undo the 2 bolts holding the bushing bracket using a 13mm socket. (There is only 1 bolt per bushing bracket). Remove the stock bushing bracket and bushing from the bar. (Note: Picture shows stock bracket out of car for clarity purposes)

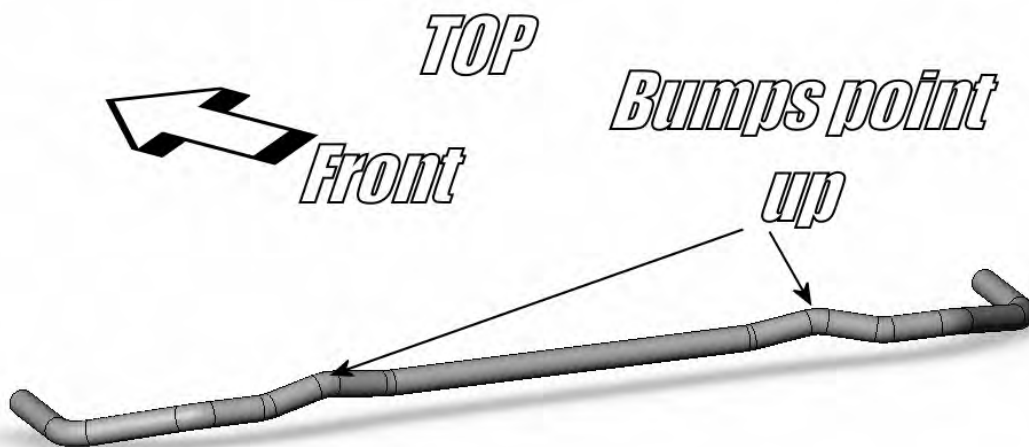




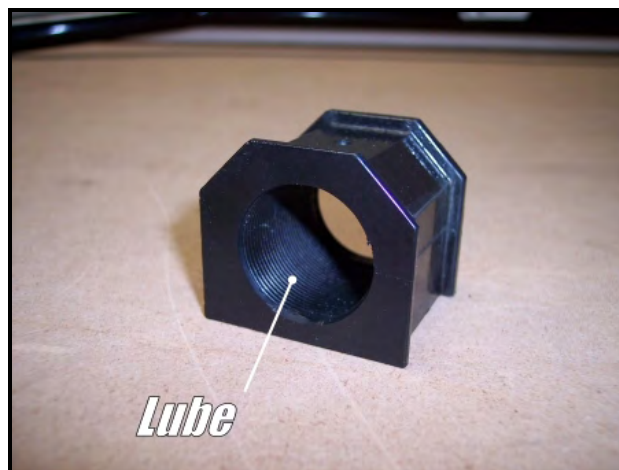
- » Maneuver the sway bar around below the steering rack and remove from the vehicle. This may take some patience.



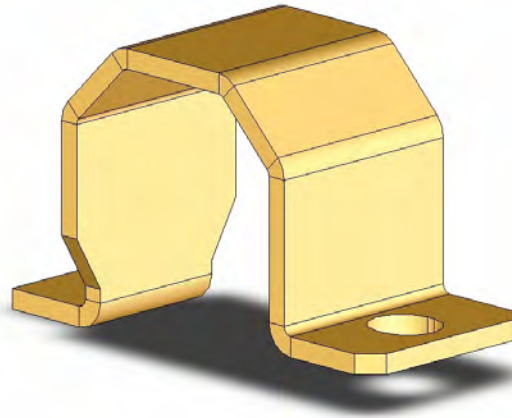
- » Once the sway bar is removed, install your new Hotchkis sway bar in the same manner as removal. See diagram below for proper orientation.



- » Apply the provided lubrication to the inside surface of your new polyurethane bushings. Install the bushings onto the Hotchkis sway bar in the same place as the stock bushing location.

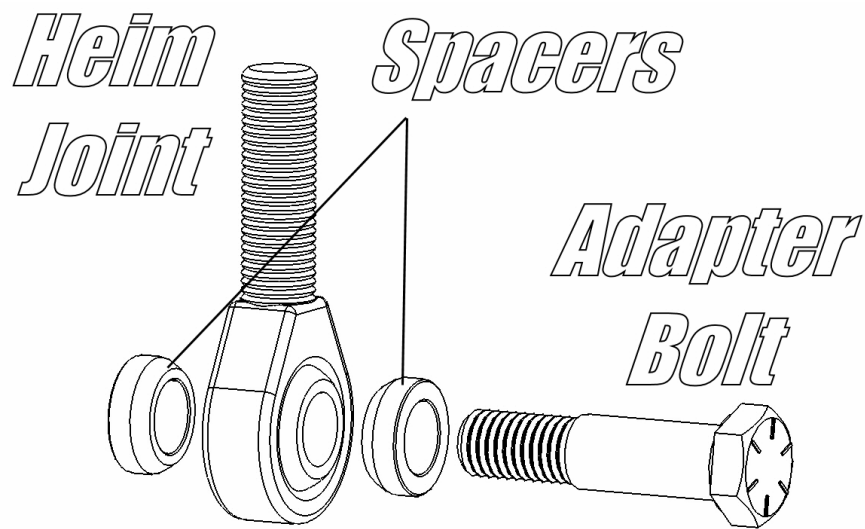
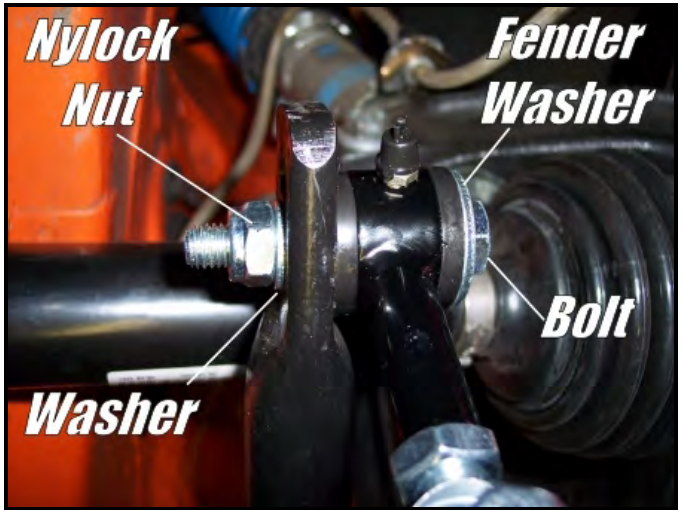
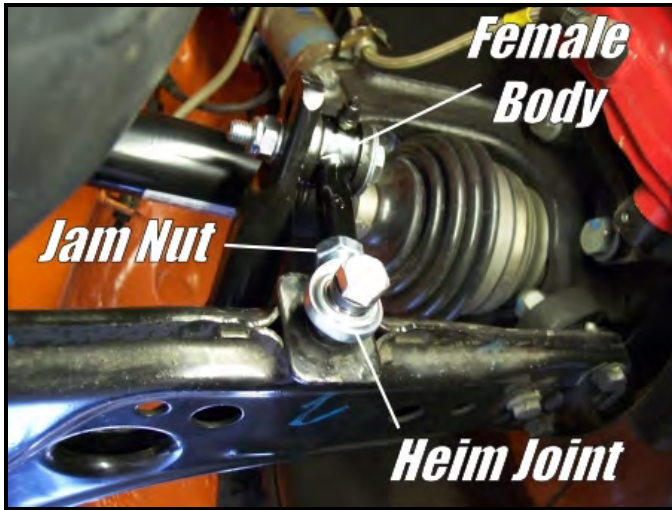


- » Your Hotchkis kit also comes with new bushing brackets to accommodate the new bushings. Install the bushing brackets using the original stock bolt. Lightly tighten both sides one at a time to make easier to start the bolts. Once both bolts are started, fully tighten the bracket bolts.

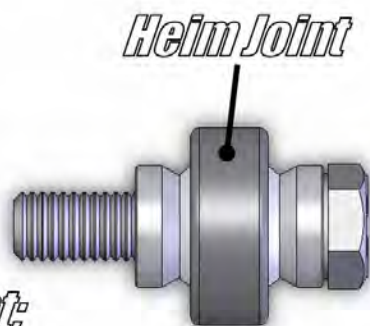


- » Reattaching the subframe. This step will require some patience.  
Use your roller jack or tranny jack to lift the subframe close to it's original position. Make sure the sway bar is positioned in front of the steering rack. You may need to use a pry bar or similar tool to accomplish this. Use a combination of pry bars to align the holes of the subframe. Rolling the wheels forward or backward may also be required to align the holes. Once positioned, start the 4 large subframe cradle bolts by hand. Do not fully tighten at this time.
- » Line up the steering rack holes and install the 4 stock bolts to secure the rack. Fully tighten these bolts.
- » Now you can fully tighten the 4 large subframe bolts.
- » Reinstall the engine brace in the same manner as removal.
- » It's now time to attach the sway bar endlinks to the control arms. This is a good time to choose the amount of roll stiffness you want. The stiffness adjustment holes are as follows:
  - Stiff = Hole closest to edge
  - Stiffest = Hole furthest from the edge

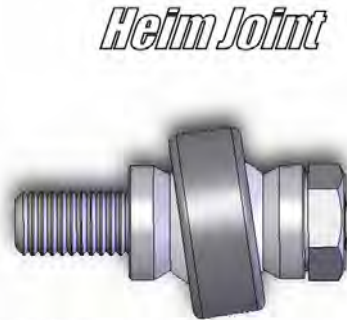
Before you install the endlinks, make sure to lubricate the sides of the polyurethane bushings with the supplied grease. Install with the provided hardware.



Once both endlinks are secured, tighten the jam nuts using an 11/16" wrench. Make sure the heim joint is not twisted at an angle after tightening the jam nuts. See Diagram. (Note: Diagram depicts view from underneath endlink looking up.)



*Straight:*  
*Maximum*  
*Articulation*



*Misaligned:*  
*Minimum Articulation* **BAD!**

- » Make sure all hardware is fully tightened and you are done with the front!



### *INSTALLATION OF H-SPORT REAR SWAY BAR*

- » Securely block the front wheels of the vehicle. Use a jack to lift up the rear of the vehicle and support with jack stands. As with the front installation, you should not remove the rear wheels.
- » Overview: The Mark IV does not have a stock rear sway bar. This is mainly due to the fact that the rear has a torsion beam suspension. The torsion beam is the long component that connects the left and right rear suspension. However, there is still a fair amount of flex in this beam allowing room for improvement.





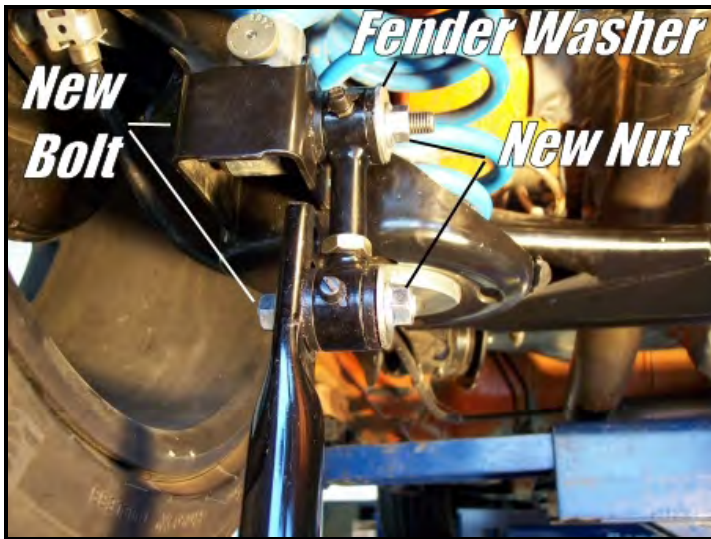
As a brief summary, the 2 bearing mounts will be installed on the straight section of the torsion beam. The end links will attach to the lower shock mount.

- » We will first install the end links on the car. First, loosen and remove the lower shock bolt & nut. You may need to use a floor jack to raise or lower the rear suspension in order to relieve some of the load on the shock bolt. You may discard the stock hardware.

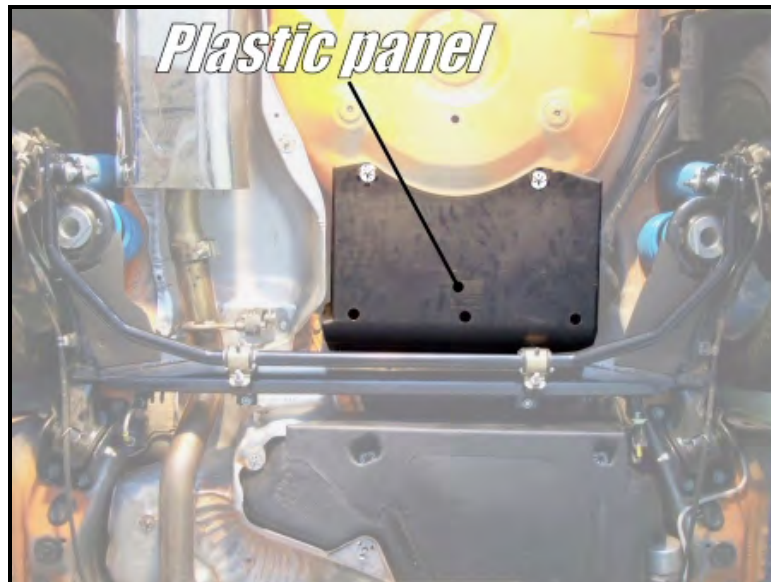


- » Next, insert the supplied bolt (M10 x 100mm) & washer through the lower shock hole. Grab your new Hotchkis end link and grease both sides of the polyurethane bushings. Install the end link with the male end on top, having the grease fittings facing towards the rear of the car. Place the fender washer on the shock bolt before securing the nylock nut. Use the M10 x 60mm bolts to secure the sway bar to the end link in similar fashion. Fully tighten all nuts & bolts at this time. You should still be able to rotate the end link after tightening.

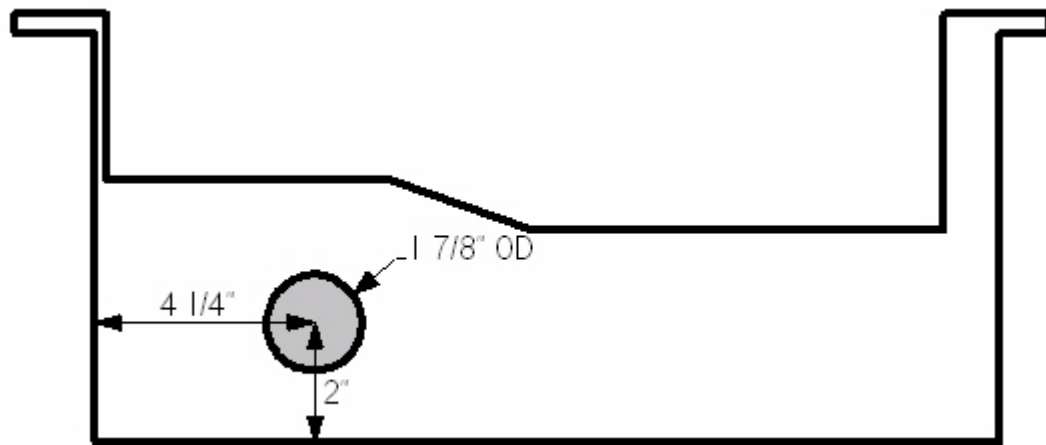




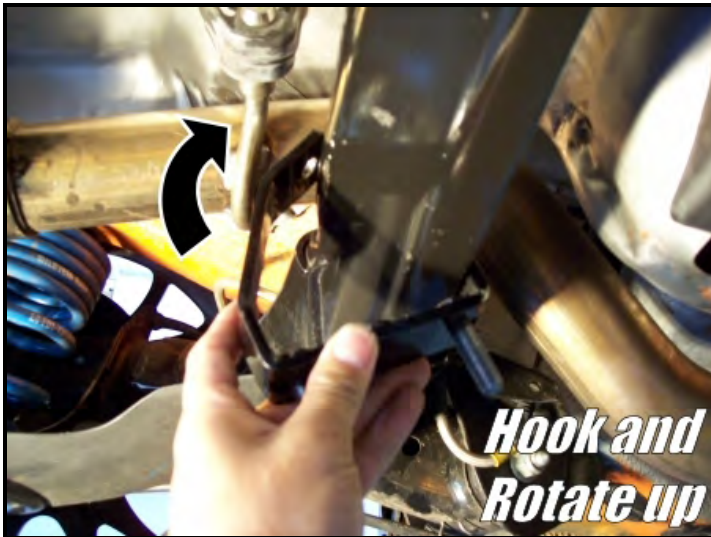
- » The stiffness adjustment holes are as follows:
  - Stiff = Hole closest to edge
  - Stiffer = Middle hole
  - Stiffest = Hole furthest from the edge
- » Before we install the bearing brackets, we will need to cut a clearance hole in the plastic panel near where the passenger side bearing bracket is.



Remove the 4 one-way clips that secure the panel to the car.



- » We will now install the bearing brackets onto the torsion beam center section. Install the brackets onto the beam as shown in the picture. The brackets should be spaced approximately 20" away from each other. The position of the brackets does not have to be exact, but try to get them approximately in the specified position.





- » Once the brackets are positioned, you may secure them to the beam using the supplied clamp plate and hardware.



- » Lube and install the polyurethane bushings onto the sway bar. Rotate the sway bar up toward the torsion beam. Install the bushing bracket and secure with the provided washers and nuts. Fully tighten.







- » Reinstall the plastic panel.



- » *For aggressive racing applications*, H-Sport suggests spot welding the torsion beam brackets to the torsion beam. See picture for weld locations. Make sure to grind and clean any surface that is to be welded to insure proper cohesion and penetration.



- » Double check to make sure all hardware is fully tightened before driving the vehicle. You have completed the entire sport sway bar installation. Enjoy the Best GTI/Jetta Sway bar kit on the market!



**HSPORT**

*Sport Sway Bar Kit 22813  
VW Golf (GTI), Jetta*

|    | <b>Hotchkis P/N</b> | <b>Item Description</b>            | <b>Quantity</b> |
|----|---------------------|------------------------------------|-----------------|
| 1  | 22810270            | Front Anti Roll Bar                | 1               |
| 2  | 22910270            | Rear Anti Roll Bar                 | 1               |
| 3  | 21810270            | Front Polyurethane Bushings        | 2               |
| 4  | 5348G               | Rear Polyurethane Bushings         | 2               |
| 5  | 23890216            | Front Bushing Brackets             | 2               |
| 6  | 15.12.39.39         | Rear Bushing Brackets              | 2               |
| 7  | 23910270            | Rear Bracket Axle                  | 2               |
| 8  | 23410270            | Rear Clamp Bracket                 | 2               |
| 9  | 1749                | <b>GTI ARB Hardware Kit</b>        | 1 KIT           |
| 10 |                     | M10-1.5X100mm Hex Cap Screw        | 2               |
| 11 |                     | M10-1.5X60mm Hex Cap Screw         | 4               |
| 12 |                     | M10-1.5X30mm Hex Cap Screw         | 2               |
| 13 |                     | M10-1.5 Nylock Nut                 | 12              |
| 14 |                     | M10 DIN 125 B Washer               | 14              |
| 15 |                     | M10 DIN 9021 Fender Washer         | 6               |
| 16 | 25813               | <b>GTI Endlink Kit</b>             | 1 KIT           |
| 17 | 17490270            | Front Endlink Bolt (7/16" to 10mm) | 2               |
| 18 | MM-7TY              | 7/16" Male Rod End                 | 2               |
| 19 | 16410186            | Endlink Spacer Sm 7/16"            | 4               |
| 20 | 25530270            | Endlink Body Male (for rear)       | 2               |
| 21 | 25630270            | Endlink Body Female                | 4               |
| 22 | 21410270            | E46/GTI Endlink Bushing            | 4               |
| 23 | 16490270            | GTI Endlink Sleeve                 | 6               |
| 24 | 7/16-20JAMB         | 7/16-20 Jam Nut                    | 4               |
| 25 | 7201                | Zerk Fitting, short                | 6               |
| 26 | GC-5B               | Black Grease Cap                   | 6               |





## HOTCHKIS PERFORMANCE WARRANTY POLICY

**Effective January 1, 2000. Supersedes all previous policy statements. Policies are subject to change without notice. Hotchkis Performance is not responsible for printing errors.**

If you purchased your Hotchkis Performance product from an authorized dealer, you are covered by the terms of this policy. All claims however, must be submitted **THROUGH YOUR DEALER** not to Hotchkis Performance directly.

### Return Policy:

We want you to be completely satisfied with your Hotchkis Performance product. In case you're not, you can exchange or return it within 30 days of the purchase date. To obtain a full refund, excluding freight, please contact our Customer Service Department at (562) 907-7757. You will be assigned a Returned Goods Authorization Number (RGA). The package you return must show the RGA on the outside of the package, include the original invoice and be shipped prepaid to our facility. The part has to be in its original packaging materials and be in a sellable condition. For parts presenting signs of use, only warranty claims will be accepted. Exchanges or refunds can be made after 30 days with a 20% restocking charge.

### Warranty Claim:

Hotchkis Performance warrants its products against materials and workmanship failure for the term of 36 months (3 year) from the date of purchase and only up to the amount paid. If the product is determined to be defective, Hotchkis Performance will repair, replace or refund its value at Hotchkis Performance's discretion. Any repaired or replaced product will be returned to the sender freight prepaid.

### How to File a Warranty Claim:

The answer to ALL the following questions should be **YES** before contacting our Customer Service Department.

- Is the part appropriate to your application?
- Did you carefully and thoroughly read the instructions provided along with the part?
- Do you have the proof of purchase?
- Are you the original purchaser?
- Is the part unmodified and clean?
- Is the return date within 36 months from the purchase date?
- Is the reason for return a legitimate product defect?

**If the answer to all these questions is YES, please contact our Customer Service Department at (562) 907-7757. You will be given a Returned Goods Authorization Number (RGA) valid for 60 days. You will also be asked to ship the part prepaid to our facility. All shipments MUST be prepaid, include the original invoice and show the RGA on the outside of the package, otherwise it will be refused. Please include a brief explanation letter in order to expedite the warranty analysis process.**

### What doesn't this Warranty Cover?

The costs not covered by this warranty include but are not limited to:

- Removal, installation, shipment and insurance costs.
- Improper installation or maintenance.
- Misuse or abuse, negligence, off-road and/or racing applications.
- Damage to related components.
- Normal wear and tear.
- Costs incurred due to down time of vehicle.
- Alterations on the original design or unauthorized repairs.

**Items offered but not manufactured by Hotchkis Performance are warranted according to the manufacturers terms and are not the responsibility of Hotchkis Performance.**

**All warranties implied by law are limited in duration of this warranty. You have specific rights that may vary from state to state.**

**12035 BURKE ST. SUITE 13 SANTA FE SPRINGS, CA 90670  
PHONE: (562) 907-7757 FAX: (562) 907-7765**



RETURN THIS FORM FOR A FREE 9" DIE CUT STICKER!

Thank you for purchasing our products.  
Our goal is to supply you with the highest quality, and the most thoroughly tested performance products available. To assist us in continuing to do this, please take a moment to fill out and return this questionnaire.

Name: \_\_\_\_\_

Address: \_\_\_\_\_

City: \_\_\_\_\_ State: \_\_\_\_\_ Zip \_\_\_\_\_

Phone #: \_\_\_\_\_ E-Mail: \_\_\_\_\_

Year, make and model, car/truck: \_\_\_\_\_

What parts did you purchase? \_\_\_\_\_

Where did you purchase them? \_\_\_\_\_

Were you satisfied with this transaction? Y N

(If not, why?) \_\_\_\_\_

- WERE YOU SATISFIED WITH THE FOLLOWING?

Fabrication and finish: \_\_\_\_\_

Instructions and ease of installation: \_\_\_\_\_

Performance improvement: \_\_\_\_\_

(If not, why?) \_\_\_\_\_

What other products would you like to see us make?  
\_\_\_\_\_

Have you read about our products on the Internet? Y N

(If so, where?) \_\_\_\_\_

Where have you seen our products?  
(i.e. magazines/shows/catalogs) \_\_\_\_\_

12035 BURKE ST. SUITE 13 SANTA FE SPRINGS, CA 90670  
PHONE: (562) 907-7757 FAX: (562) 907-7765