

# Registry News



## Spring 2018 Newsletter

*You are receiving this email newsletter because you are a Gateways to Opportunity Registry Member. The Registry News will provide up-to-date information about programs and policy changes. Additionally, we always include something you can use in your classroom. Feel free to share this newsletter by printing a copy for your program, or forwarding it to a friend.*

### In This Issue

**IDHS CCAP  
Announcement**

**Afterschool Map  
and Database**

**Monarch Butterflies:  
Explore the Magic**

**Illinois Department of Human Services Announces Enhancements to the Professional Development Requirements to Care for Child Care Assistance Program (CCAP) Children.**

**CCAP Providers must complete child development, health, and safety trainings by September 30, 2018.**

The Illinois Department of Human Services (IDHS) partners with child care providers to serve low income families through the Child Care Assistance Program (CCAP). To ensure the health and safety of children, the Federal government is now requiring that providers who receive CCAP funds complete specific child development, health, and safety trainings and have current CPR/First Aid certification by **September 30, 2018** in order to continue receiving CCAP funds.

Child care providers receiving CCAP funds MUST be members of the **Gateways Registry** and track their training, Credentials, and certifications in the Registry. Registry membership must be renewed every year.

### Registry Verified Conferences

**24th Annual Early  
Childhood Conference**  
April 21, 2018  
Morton College, Cicero, IL

**FOCUS Child Development  
Conference**  
April 21, 2018  
Kankakee Community College,  
Kankakee, IL

**Ready to Learn Conference**  
April 21, 2018  
Western Illinois University,  
Moline, IL

**P3 Seminar**  
April 28th, 2018  
Joliet Jr. College, Joliet, IL

## Who must complete the training?

### >> Licensed Centers and License-Exempt Centers

- Director(s) – individual(s) who has primary responsibility for the daily operations management of the center
- Teacher(s) – includes lead teachers, teachers, teacher assistants or teacher aides who are employed by a child care center for compensation on a regular basis
- Support Staff – if an individual has responsibilities in a classroom, working directly with children, on a regular basis
- Student workers, part time employees, substitutes and migrant/seasonal/summer camp providers

### >> Licensed Family Child Care Homes and Group Homes and License-Exempt Family Child Care Homes

- The primary caregiver is required to complete all trainings. The primary caregiver is the person who signs the CCAP application asking to be an approved provider. This applies to both relative and non-relative providers. License-Exempt relative providers caring for school-age only children are exempt from these requirements.

## What training is required?

- Child Development, Health, and Safety Basics Training
- Child Abuse and Neglect/Mandated Reporter Training
- CPR/First Aid Certification
- What is CCAP? (for directors and primary caregivers defined above)

There are many ways you can meet the CCAP child development, health, and safety training requirements. Find the one option that works best for you. **Download this chart.**

**Celebrate Early Childhood:  
Reclaim Your Passion**  
May 5, 2018  
Apostolics of Salem, Salem, IL

**Leadership Connections  
National Conference**  
May 10-12, 2018  
Westin Chicago North Shore,  
Wheeling, IL

**Becoming Young Thinkers  
Summer Institute**  
June 12-14, 2018  
United Presbyterian  
Church - UPC Discovery,  
Peoria, IL

**NAFCC Conference**  
June 28-July 1, 2018  
Hyatt Regency O'Hare,  
Chicago, IL

## Data Bits and Bites

Gateways to Opportunity has awarded 48,785 Gateways Credentials!

There are many ways you can meet the CCAP child development, health, and safety training requirements. **Find the one option that works best for you.**

### Option 1 Training Route

- ▶ Child Development, Health, and Safety Basics Training
- ▶ Child Abuse and Neglect/Mandated Reporter Training
- ▶ CPR/First Aid Certification
- ▶ What is CCAP? (for directors and primary caregivers defined above)

### Option 2 ECE Level 1 Training Route

- ▶ ECE Credential Level 1 Training - Tier 1 (Modules 1-2c)
- ▶ Child Abuse and Neglect/Mandated Reporter Training
- ▶ CPR/First Aid Certification
- ▶ What is CCAP? (for directors and primary caregivers defined above)

### Option 5 CDA Route

Any one of the following Child Development Associates (CDA) meets the Child Development, Health, and Safety Basics Training requirement and must be self-reported into the Registry.

- ▶ Preschool CDA
- ▶ Infant Toddler CDA
- ▶ Family Child Care CDA

If you have a Preschool CDA then complete the following:

- ▶ Sudden Infant Death Syndrome (available only online through i-learning)
- ▶ A Preventable Tragedy: Shaken Baby Syndrome (available only online through i-learning)
- ▶ Child Abuse and Neglect/Mandated Reporter Training
- ▶ CPR/First Aid Certification
- ▶ What is CCAP? (for directors and primary caregivers defined above)

If you have an Infant Toddler CDA or Family Child Care CDA then complete the following:

- ▶ A Preventable Tragedy: Shaken Baby Syndrome (available only online through i-learning)
- ▶ Child Abuse and Neglect/Mandated Reporter Training
- ▶ CPR/First Aid Certification
- ▶ What is CCAP? (for directors and primary caregivers defined on previous page)

### Option 3 School-Age Route

Providers who only care for school-aged children (ages 5-13), can choose to take the School-Age and Youth Development Credential Level 1 Training. They would complete the following:

- ▶ SAYD Credential Level 1 Training (Modules 4a & 4b)
- ▶ Child Abuse and Neglect/Mandated Reporter Training
- ▶ CPR/First Aid Certification
- ▶ What is CCAP? (for directors and primary caregivers defined on previous page)

For the purpose of CCAP, a school-age child is a child ages 5-13 (or through the age of 18 if approved for CCAP due to a special need or court order) who is enrolled in school. A five year old child is considered school-age only when enrolled in a school based kindergarten. This enrollment does not include a before/after school program. License-Exempt, Relative, Family Child Care Homes caring for school-age only children are exempt from the requirements.


### Option 4 Gateways Credential Route

Any one of the following Gateways Credentials meets the Child Development, Health, and Safety Basics Training requirement.

- ▶ ECE Credential Levels 1-6
- ▶ Infant Toddler Credential (ITC) Levels 2-5
- ▶ Illinois Director Credential (IDC) Credential Levels I-III
- ▶ Family Child Care Credential (FCC) Levels 2-5

Then complete the following:

- ▶ Child Abuse and Neglect/Mandated Reporter Training
- ▶ CPR/First Aid Certification
- ▶ What is CCAP? (for directors and primary caregivers defined on previous page)



**Let  
Great START  
reward you!**

*Great START can provide you with extra money on top of what you're already making.*

**Click here for more information**

## Where do I find training?

### >> Child Development, Health, and Safety Basics Training

- Online training – Available in English April 9th and Spanish April 23rd at [courses.inccrra.org](http://courses.inccrra.org)
- Local training – Search the [Gateways Training Calendar](#) or contact your local [Child Care Resource & Referral Agency](#)

### >> Child Abuse and Neglect/Mandated Reporter Training

- Offered online only at <https://mr.dcfstraining.org/>

### >> CPR/First Aid Certification

- Contact your local [Child Care Resource & Referral Agency](#) for training or a list of organizations that offer approved training. Only in person training accepted.

### >> What is CCAP? Training

- Online training – [courses.inccrra.org](http://courses.inccrra.org)
- Local training – Search the [Gateways Training Calendar](#) or contact your local [Child Care Resource & Referral Agency](#)

## How is training tracked in the Registry?

### >> Child Development, Health, and Safety Basics Training – Tracked automatically in the Registry.

### >> Child Abuse and Neglect/Mandated Reporter – This training must be self-reported to the Registry.

- Go to MY REGISTRY > LEARN
- Click the “Add New” Button at the bottom of the listing
- Enter Mandated Reporter as the training name, DCFS as the trainer name, 2 for the contact hours, and the Issued Date on your certificate of completion.
- Click the “Save” button. For more details about how to self-report Mandated Reporter visit <http://urls.inccrra.org/mandated-reporter>.
- Keep your Child Abuse and Neglect/Mandated Reporter training certificate in a file. You must be able to produce a copy when requested by IDHS.

### >> CPR/First Aid Certification – This certification must be entered as a certification to the Registry.

- Go to MY REGISTRY > UPDATE and click the “Credentials” tab.
- Select “CPR” from the drop-down, click “Add”, and enter the required information.
- Then, select “First Aid” from the drop-down, click “Add”, and enter the required information.
- Click the “Save” button at the bottom of the screen. For more detail about how to enter CPR/First Aid visit <http://urls.inccrra.org/report-cpr>.
- Keep your CPR/First Aid Certification in a file. You must be able to produce a copy when requested by IDHS.

### >> What is CCAP? – Tracked automatically in the Registry.



CONSTRUCTIVE  
PLAYTHINGS®  
CONSTRUCTING QUALITY IN EARLY EDUCATION

Supporting early childhood  
development for 65 years

JAMIE  
FISHMAN



SALES CONSTRUCTIVE  
PLAYTHINGS

816.767.2005

[jfishman@constructiveplaythings.com](mailto:jfishman@constructiveplaythings.com)

CONTACT JAMIE TO  
RECEIVE A **SPECIAL OFFER**  
ON YOUR FIRST ORDER

**VISIT OUR WEBSITE**

### Integrated Pest Management in Child Care Course




97% of providers found  
this course helpful  
(83% “Very Helpful”!)!



MIDWEST PESTICIDE  
ACTION CENTER

**Click here for FREE training.**

Search for “IPM”




28TH NATIONAL FAMILY  
CHILD CARE CONFERENCE

**Celebrating the Power of  
FAMILY CHILD CARE**

**June 28-July 1, 2018**

Hyatt Regency O'Hare  
Chicago, Illinois



**NAFCC**  
National Association for Family Child Care  
Your Home. Your Profession. Our Commitment.

[www.nafcc.org](http://www.nafcc.org)  
801-886-2322  
#NAFCC18

## Gateways Provider Completion of IDHS CCAP Training Requirements Report

The Gateways Registry now offers a customized report to show an individual's progress toward meeting the training requirements. View the Gateways Hot Topic video, [CCAP Completion Report](#), to help you access and print the Gateways to Opportunity Registry Completion of IDHS CCAP Training Requirements report.

### Illinois Department of Human Services (IDHS) Helpful Links

- [CCAP Training Enhancement Notice](#)
- [License-Exempt Homes Notice](#)
- [License & License-Exempt Centers Notice](#)
- [Licensed Family Child Care Notice](#)
- [IDHS CCAP Training Requirements Frequently Asked Questions](#)

### Helpful Resources and Links

- [Gateways Registry](#) - become a Gateways Registry Member online
- [i-learning](#) - to access online training
- Find your local [Child Care Resource & Referral Agency](#)



**A Gateways to Opportunity Scholarship can help pay up to 100% of the cost of tuition.**

[Click here for more information](#)

### You are invited to participate in a **SHORT** educational research survey!

Would you like to win a **\$25 Visa gift card** and help make the world a better place?

The University of Chicago is inviting you to participate in a short educational study! The study was created to learn about providers and educators and what they know about cognitive and language development in children. UChicago is hoping that what they learn from this survey will help design new curriculum and understand how to target support to programs and centers that need it.

By providing just 10 minutes of your time, you can enter in the drawing with a chance to win. UChicago sincerely thanks you for your time!

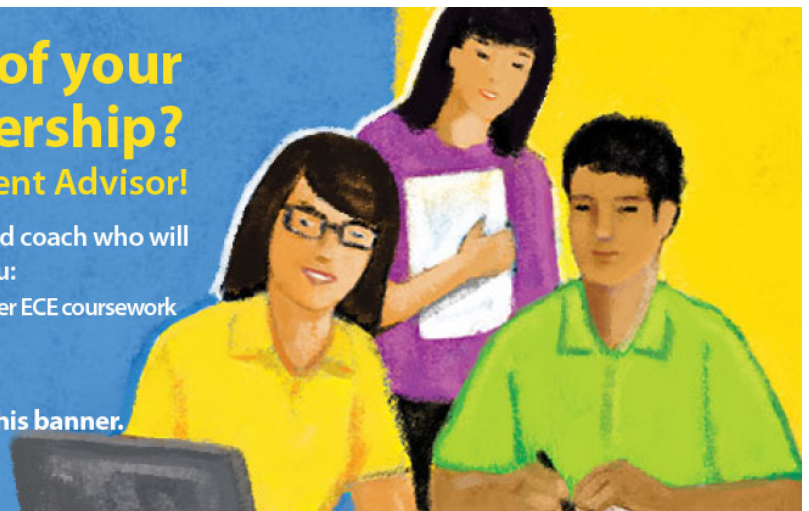
If you are interested in participating, please visit <https://redcap.uchicago.edu/surveys/?s=9D84WMF7NF>.

## Are you making the most of your Gateways Registry Membership? Request your *free* Professional Development Advisor!

A Professional Development Advisor (PDA) is an experienced coach who will assist you with setting your career goals. A PDA will help you:

- Find information about colleges and universities in your area that offer ECE coursework
- Decide which Credential or certification would be best for you
- Much more!

To request a PDA, complete this quick survey by clicking this banner. We will help you get your career moving forward.



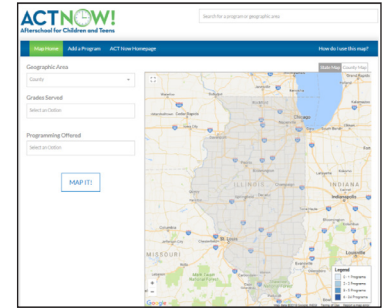
## ACT Now Launches an Afterschool Map and Database

In Illinois, afterschool supports are very fragmented. Out-of-school time programs, policymakers, and community members don't always know where after school programs are located. This makes it hard to coordinate the field, share resources, and advocate.

ACT Now launched the new Afterschool Map which is the first statewide database for out-of-school programs. ACT Now will use this information to define the afterschool landscape for policy makers, help to better connect programs to one another, help community members find programs in their area, and help to better target resources to communities in need.

### Add your program to the Afterschool Map today!

For more information about the After School Map and Database visit [Act Now's website](#).



## Monarch Butterflies: Explore the Magic

by Elizabeth Morgan Russell

(reprinted from Texas Child Care Quarterly)

“Look! It’s a fairy! She’s flying around the flowers!” shouts Brianna jumping up and down.

“Oh, wow!” exclaims Ms. Dubois. “How is it like a fairy?”

Several other children chime in: “It’s got wings.” “It can fly.” “It’s beautiful.”

“It does look a lot like the make-believe fairies in your favorite picture book, Brianna. But it’s real.

What else could it be?” Ms. Dubois asked the 3-year-olds by the flower garden.

“It’s a butterfly,” says Petra.

“How can you tell it is a butterfly?” asks Ms. Dubois.

The children answer simultaneously. “It has wings.” “It likes flowers.” “It’s bright yellow.”

“Yes, it’s a butterfly,” says Ms. Dubois. “It’s called a Monarch butterfly. When we go inside, we’ll search our library for books and online information about it.”

Read the **full article** for details and activities on the Monarch Butterfly including:

- What teachers need to know
- The life cycle of a Monarch
- Why Monarch butterflies are important
- What is hurting Monarch butterflies
- Activities for children (Toddlers, 3 to 5 years, School-agers)



# Learning Moments with Monarch Butterflies



- ➔ Encourage curiosity and wonder about Monarch butterflies.
- ➔ Talk about the many values of Monarchs.
- ➔ Illustrate scientific concepts such as metamorphosis.
- ➔ Explain why Monarchs are in danger.
- ➔ Involve children in activities that may help save the butterflies.



Gateways to Opportunity is administered through Inccrra and funded by the Illinois Department of Human Services Bureau of Child Care and Development, the McCormick Foundation, and Grand Victoria Foundation. Gateways to Opportunity, the arch logo and Illinois Professional Development System are registered trademarks of Inccrra. PD241 © 2018 INCCRRA

Copyright © 2018 INCCRRA, All rights reserved.  
Our mailing address is: INCCRRA • 1226 Towanda Plaza • Bloomington, IL 61701

You received this email because you registered to become a member of the Gateways to Opportunity Registry. Please unsubscribe at the bottom of the Registry News email to let us know if you wish to unsubscribe from this list. This will only remove you from receiving the Registry News all other program specific emails will still continue to be sent. To ensure you receive future emails of the Registry News, add [registry@ilgateways.com](mailto:registry@ilgateways.com) to your address book.