

SSIS County Considerations

Perfect Storm

- DHS – MN.IT
- SACWIS vs. CCWIS
- DHS Systems Modernization

DHS – MN.IT

DHS – MN.IT

Before MN.IT

- Department of Human Services
 - Children and Family Services
 - Child Safety and Permanency
 - SSIS
 - All project staff

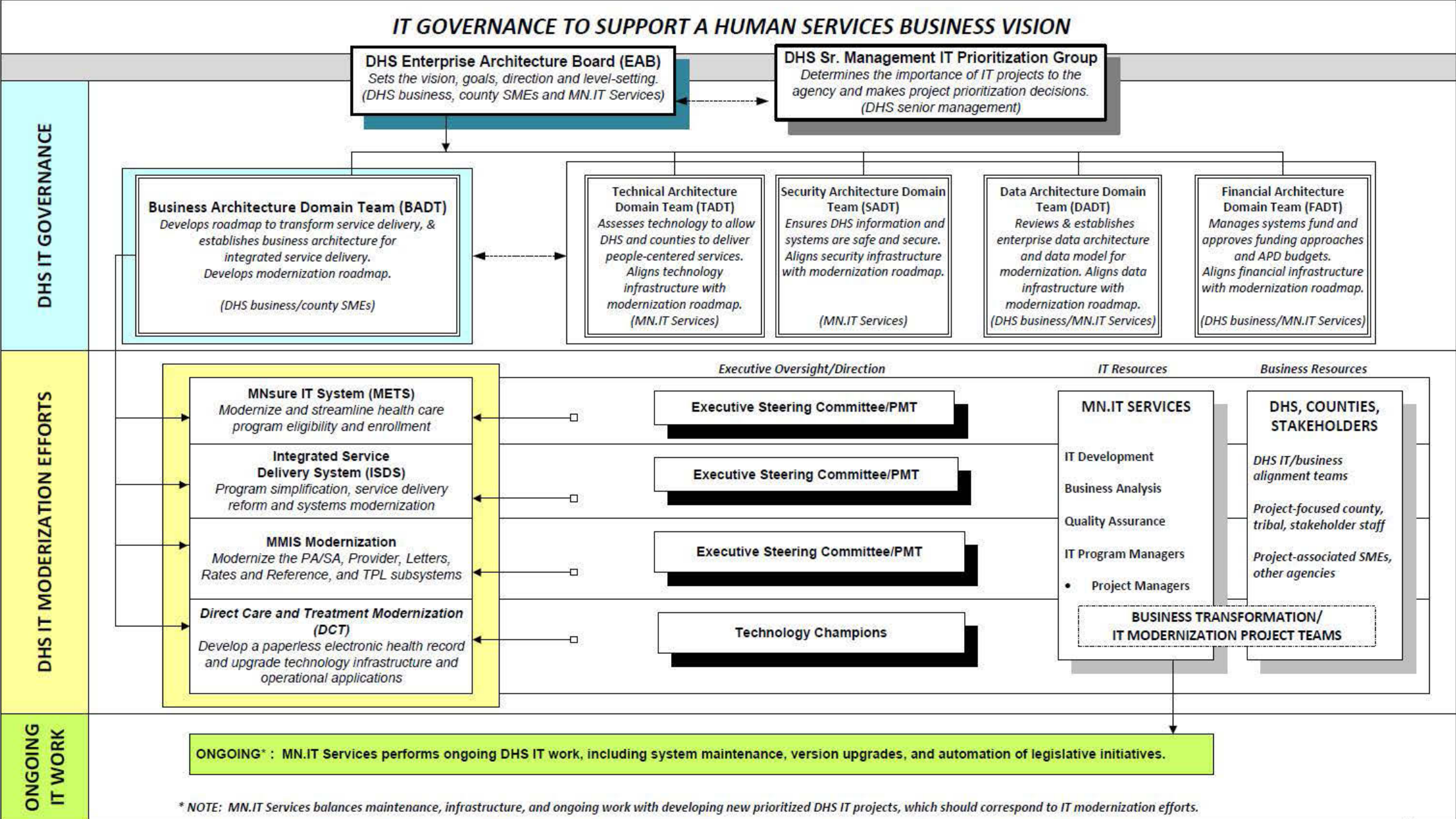
After MN.IT

- Department of Human Services
 - Children and Family Services
 - Child Safety and Permanency
- MN.IT Services
 - MN.IT @ DHS
 - PMD
 - PM, BA, QA
 - ASD
 - Dev, Helpdesk

DHS – MN.IT Impacts

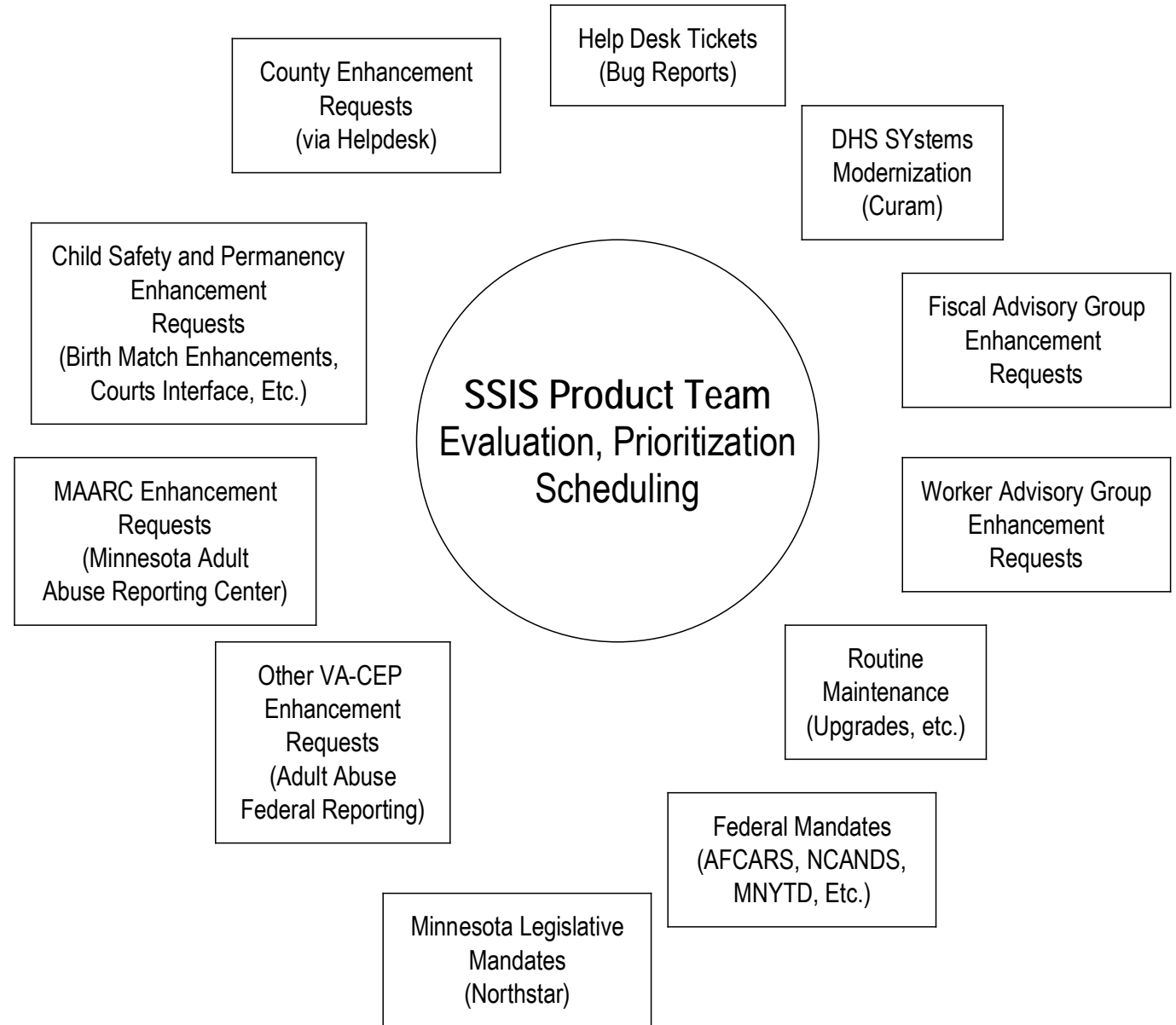
- No longer SSIS Division at DHS or MN.IT
 - DHS Child Safety and Permanency makes system decisions and set priorities
 - MN.IT activities based on business decisions
 - Relationships transition from former SSIS Division to CSP Division
 - Federal relationships
 - County relationships
- Administration for Children and Families
SSIS Partnership Committee

IT Governance Structure



SSIS System Work Requests

- 1) SSIS Product Team Continues
- 2) DHS Staff Added to SSIS Product Team
- 3) Consistent Prioritization Scoring Rubric Employed
- 4) Program Management Team (PMT) Manages Conflicting Priorities



CCWIS

Federal Funding

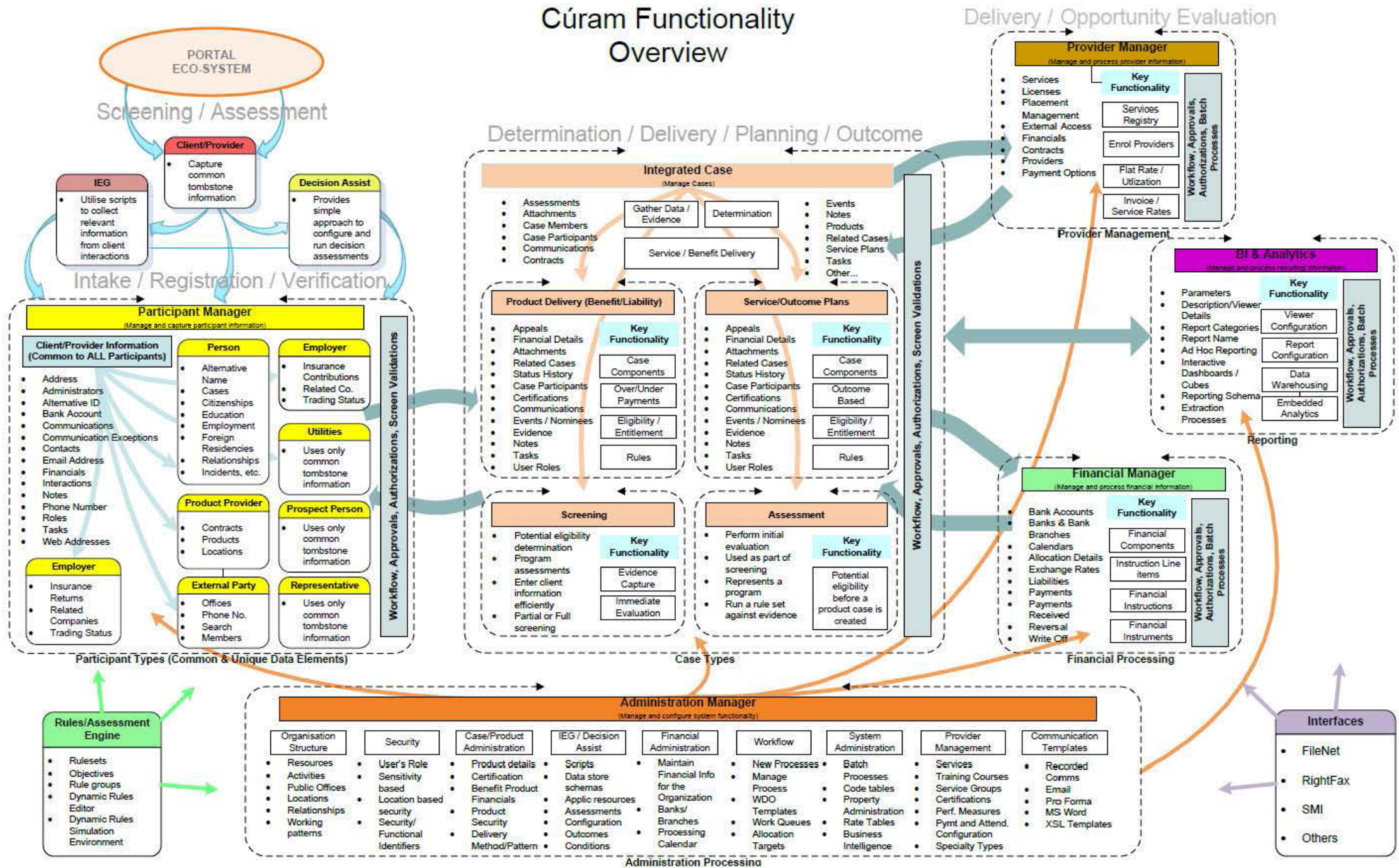
- Child welfare systems are federally managed by
 - [the Department of Health & Human Services Administration for Children & Families](#)
- Until August of this year, Minnesota was governed by
 - [Statewide/Tribal Automated Child Welfare Information System \(SACWIS/TACWIS\) regulations](#)
- Minnesota is one of only eleven states with an
 - [approved operational SACWIS system and \(I believe\) only Minnesota and Colorado are operational SACWIS systems in county-administered states](#)
- CCWIS replaces SACWIS
 - [Minnesota has two years from August 2016 to decide the future of its SACWIS system](#)

What changes with CCWIS?

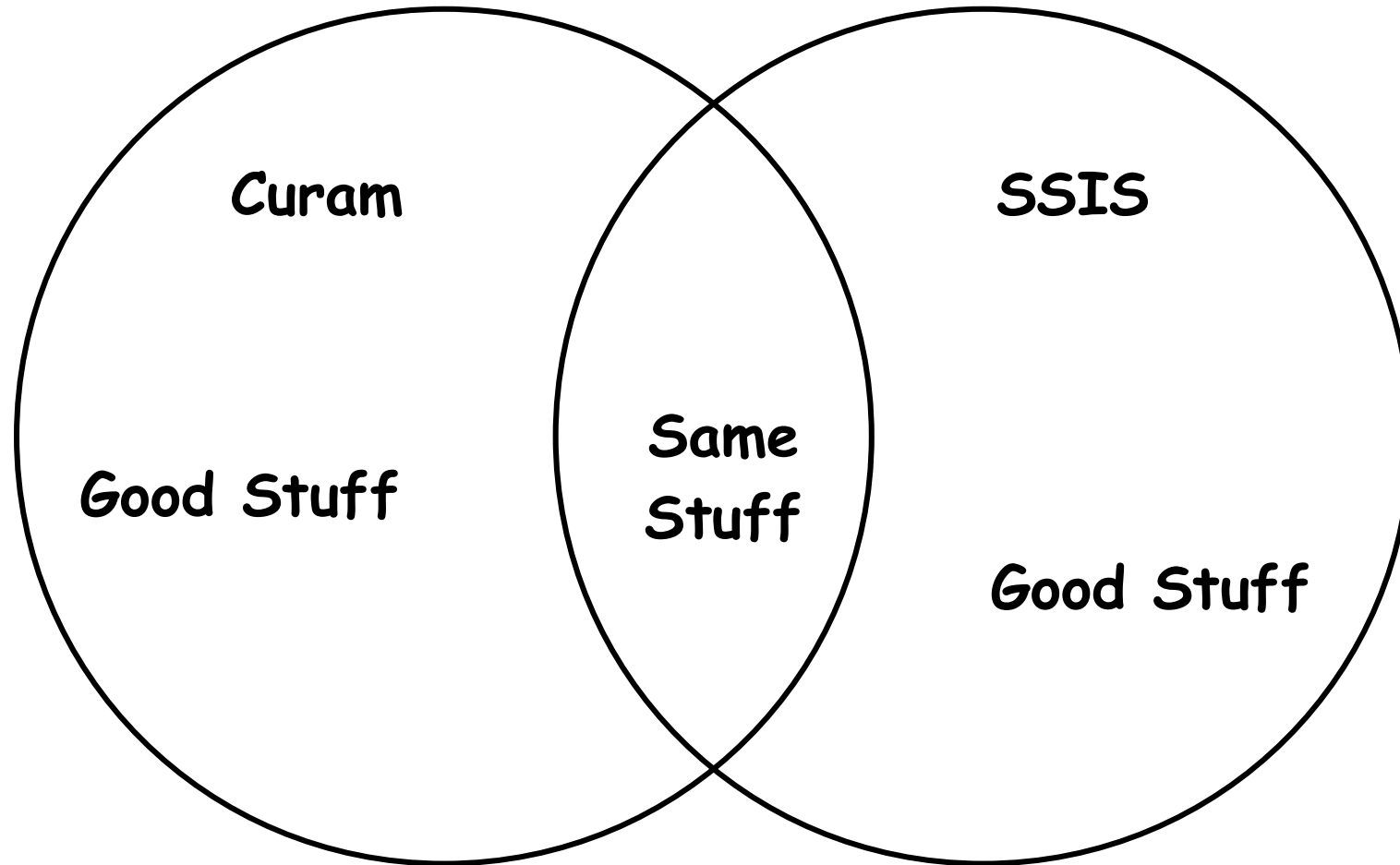
- The focus changes to data and quality, rather than mandatory system functionality.
- CCWIS requires new data exchanges with education agencies, the courts, and Medicaid claims processing systems.
- The new regulation requires a data exchange standard for interfaces with service providers and other agency systems.
- The IV-E agency must develop a data quality plan, continue to monitor data quality, and implement responsive actions to address findings found in data quality reviews.
- Finally, the CCWIS regulations encourage agencies to build a child welfare information system tailored to their business needs rather than to federal functional requirements.

DHS Systems Modernization

Cúram Functionality Overview



DHS Systems Modernization (Curam)



Questions/ Discussion