

Start time
now 9 am!

rb RITCHIE BROS.
Auctioneers®

St. Louis, MO

September 26, 2017 (Tuesday)

Unreserved public auction



6 – 2012 International ProStar+ 122



Caterpillar D6R XL



Sterling L9500



Sterling LT9500 w/Manitowoc 38124S 38 Ton



1 of 3 – 2014 Rogator 1300 4x4x4

St. Louis, MO

September 26, 2017

Tuesday 9:00 am

Phone: **618.688.1625**

Fax: 618.394.8678

Auction location: 2436 Old Country Inn Dr
Caseyville, IL 62232

513 items & counting

Bid in person or online

On-site registration starts: **Sep 23 (Sat)**

Inspection hours: **Mon–Fri, 8 am–5 pm**

Items must be removed by: **Oct 6 (Fri)**

Auction Firm License # 444.000193, Auctioneer Greg M. Highsmith # 441.000865



GPS coordinates:

Lat: 38°36'44.88"N, Long: 90°02'55.84"W

Visit rbauction.com for complete auction information



Full equipment listings, more photos and detailed equipment information



New additions to each auction – items added daily!



Deposit and payment information, including financing, wire transfer accounts and taxes



Full auction schedule, with times and lot numbers



Maps, hotels and other local services

Auction notes

- ▶ Every item is sold 'as is, where is'
- ▶ International and online bidders – you may need to place a refundable deposit before you bid – check the auction details on our website for more information
- ▶ An administrative fee will be charged on every lot purchased: 2.5% on lots selling for more than \$2,500, up to a maximum of \$950 per lot; 10% on lots selling for \$2,500 or less.

Low meter hours

less than 500 hrs

Directions to auction site

From Lambert-St. Louis International Airport, take I-70 E toward St. Louis. Take exit 250A toward M L King Bridge/ Illinois/Arch-Riverfort. Continue onto Dr. Martin Luther King Bridge (entering into Illinois). Merge onto I-64 E towards Louisville. Take exit 9 for IL-157 S (Caseyville), turn right at IL-157. Next make first right onto Tucker Dr. Make immediate right onto Old Country Inn Dr. We are located at the end of the drive.

From I-55 Northbound, take I-55 N towards St. Louis. Take exit 196 to I-255 E toward Chicago (entering into Illinois). Take exit 20 and merge onto I-64 E toward Louisville. Take exit 9 for IL-157 S (Caseyville), turn right at IL-157. Make first right onto Tucker Dr. Next make immediate right onto Old Country Inn Dr. We are located at the end of the drive.

From Chicago, take I-55 S towards Memphis. Take exit 20

I-64 E towards Louisville/St. Louis. Take exit 9 for IL-157 S (Caseyville), turn right at IL-157. Make first right onto Tucker Dr. Next make immediate right onto Old Country Inn Dr. We are located at the end of the drive.

Car rentals

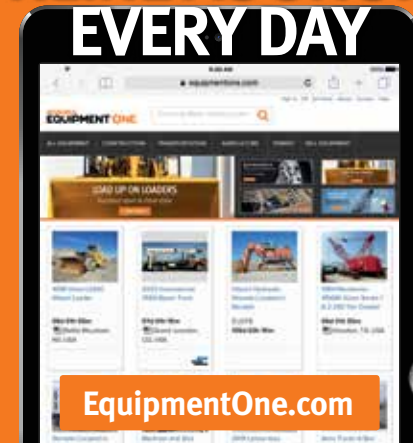
Take advantage of exclusive rental car discounts.

AVIS: C039702 | **Budget:** A062002

See the latest listings for this auction at rbauction.com

RITCHIE BROS.
EQUIPMENT ONE

ONLINE AUCTIONS
EVERY DAY



EquipmentOne.com



Reminder: Don't wait until the last minute to bid!

<p>2013 Cat 349EL Track Excavator Bidding closes in: 2 min, 37 sec* (extended) Highest bid: US \$152,000 54 bids</p>	<p>Opened at 9:25 AM: KS 876880 2013 Kenworth T660 Bidding closes in: 1 min, 37 sec* (extended) Highest bid: US \$35,000 36 bids</p>
<p>Terex T560 Hydraulic Truck Crane Bidding closes in: 1 min, 37 sec* (extended) Highest bid: US \$154,000 36 bids</p>	<p>Opened at 9:30 AM: TX 755918 2008 Prentice Bidding closes in: 1 min, 37 sec* (extended) Highest bid: US \$156,000 46 bids</p>
<p>2008 Cat 12M Motor Grader Bidding closes in: 3 min, 37 seconds* Highest bid: US \$61,000 21 bids</p>	<p>Opened at 9:35 AM: AZ 863858 2012 Cat Bidding closes in: 3 min, 37 seconds* Highest bid: US \$62,000 15 bids</p>
<p>2011 International 4300 Cab & Chassis Bidding closes in: 3 min, 37 seconds* Highest bid: US \$11,500 3 bids</p>	<p>NC 876883 2013 Kenworth Bidding closes in: 3 min, 37 seconds* Highest bid: US \$12,000 19 bids</p>

View All Items Later Today by Type

Item #	Description
71	Jarvis WH75 Right of Way Saw
72	2012 John Deere 450 Super Duty 4x4
73	2012 John Deere 210LJ 4x4 Landscape w/ Sleeper
74	2010 International ProStar Premium T/A Conventional Day Cab
75	2009 Terex T560 Hydraulic Truck Crane
76	2010 International ProStar Premium T/A Conventional Day Cab
77	2006 Cat 308C CR Mini Excavator
78	2012 John Deere 450 Super Duty 4x4
79	2012 John Deere 210LJ 4x4 Landscape w/ Sleeper
80	2010 International ProStar Premium T/A Conventional Day Cab
81	2009 Terex T560 Hydraulic Truck Crane
82	2010 International ProStar Premium T/A Conventional Day Cab
83	2006 Cat 308C CR Mini Excavator
84	2012 John Deere 450 Super Duty 4x4
85	2012 John Deere 210LJ 4x4 Landscape w/ Sleeper

Explore More Equipment

Check IronPlanet's weekly online equipment auctions

ironplanet.com



2009 Bobcat T180



Caterpillar 257B



2011 Freightliner Cascadia



2012 International 8600 TranStar



2 - 2012 International 8600 TranStar



Chevrolet 3500HD



2008 Ford F350 XL Super Duty



Ford F550 XL Super Duty 4x4 w/Altec AT37G



International 4700 w/Simon TC2863 28800 Lb



Sterling L9500 3150 Gallon



4 - Ford F450 XL Super Duty



International 4300 w/Lift All LM702MS



Articulated Rough Terrain 4x4 w/Altec AA-600



Freightliner FL80 Sewer Truck



International 4700



Freightliner FL60 Satellite Truck



John Deere 3420



JLG 600AJ 4x4



2 - Kentucky 53 Ft x 102 In.

Equipment listings

Construction

CRAWLER TRACTORS: Caterpillar D6R XL.

CRAWLER LOADERS: Caterpillar 953 LGP.

SKID STEER LOADERS: Bobcat 943 • Caterpillar 226B.

MULTI TERRAIN LOADERS: 2009 Bobcat T180 • 2012 Case TV380 • Caterpillar 257B.

HYDRAULIC EXCAVATORS: Case CX290 • Caterpillar EL200B • John Deere 225CLC RTS.

MINI EXCAVATORS: 2009 John Deere 50D.

CABLE PLOWS: Turfco 85210 Pipe Piper.

TRENCHERS: 2011 Ditch Witch RT12 Walk Behind.

DIRECTIONAL DRILLS: Ditch Witch JT1720 • Vermeer D24X40 Series II.

LOADER BACKHOES: Case 580 Super K • John Deere 510B.

ROUGH TERRAIN CRANES: Grove RT855B • Pettibone 30.

COMPACTORS: Bomag BW120 AD-3.

WALK BEHIND COMPACTORS: 2- Unused - Mustang LF88 Plate • Wacker Neuson RS600A Roller.

TOW BEHIND ROLLERS: Tampro Pneumatic Wheel.

CONCRETE PAVERS: Gomaco GT6200 Trimmer/Placer • Whiteman Screed.

SKIDDERS: International S9B 4x4.

ENVIRONMENTAL EQUIPMENT: Troy Bilt Chipper • Vermeer BC1400 Chipper.

CONVEYORS: 2- Unused - Better BE3660C 36 In. x 60 Ft Portable Radial Stacking • 2- Unused - Better BE3650C 36 In. x 50 Ft Portable Radial Stacking • 2- Unused - 2017 Super 36 In. x 60 Ft Portable Radial Stacking • 2- Unused - 2017 Super 36 In. x 50 Ft Portable Radial Stacking.

Trucks & trailers

WINCH TRACTORS: White GMC T/A.

33- TRUCK TRACTORS: 2011 Freightliner PFX125064ST Cascadia Sleeper T/A • Freightliner CL120 Columbia S/A • 2- Freightliner Columbia T/A • 2008 Freightliner Cascadia Sleeper T/A • 2012 Freightliner Cascadia T/A • Freightliner T/A • International 9400I Eagle Sleeper T/A • International 9200 Sleeper T/A • 2012 International 8600 TranStar T/A • 2- 2012 International 8600 TranStar S/A • International 8600 T/A • 6- 2012 International ProStar+ 122 Sleeper T/A • 5- 2013 International ProStar S/A • Kenworth T2000 T/A • Kenworth T800 S/A • Kenworth T/A • Mack CXN613 T/A • 4- Volvo VNM64T T/A • 2008 Western Star 4900FA Tri/A.

DUMP TRUCKS: Chevrolet 3500HD S/A • 2- Ford F700 S/A • Ford F450 S/A.

MIXER TRUCKS: Volvo.

TANK TRUCKS: Sterling L9500 3150 Gallon Tri/A.

BOOM TRUCKS: International 4700 S/A w/Simon TC2863 28800 Lb • Sterling LT9500 T/A w/Manitowoc 38124S 38 Ton.

DIGGER DERRICK TRUCKS: GMC TopKick w/Altec • Ranger 660 667FWD Articulated Rough Terrain 4x4 w/Sim.

13- BUCKET TRUCKS: 2- Articulated Rough Terrain 4x4 w/Altec AA-600 • Ford F550 XL Super Duty 4x4 w/Altec AT37G • 2011 Ford F450 • Ford F450 XL Super Duty w/Hi-Ranger TL38P • 3- Ford F450 XL Super Duty w/Altec AT200A • 2008 Ford F350 XL Super Duty S/A • 2010 Ford E350 • 2- GMC 7500 S/A w/Altec LRV55 • International 4300 S/A w/Lift All LM702MS.

VACUUM TRUCKS: Ford L8000 S/A Sewer Truck • Freightliner FL80 T/A Sewer • Sterling L9500 T/A.

MECHANICS TRUCKS: 2012 International TerraStar SFA S/A Tire.

REEFER TRUCKS: International 7600 T/A.

UTILITY TRUCKS: Chevrolet 2500HD 4x4 • Ford F350 Extended Cab.

VAN TRUCKS: Ford F350 XL Super Duty 4x4 • 2008 Ford E150.

FLATBED TRUCKS: 2011 Ford F450 Dump • Ford F350 XL Super Duty • Ford F350 XLT Super Duty Crew Cab • GMC C7500 Dump • International 4700 S/A.

TRUCKS: Freightliner FL60 S/A Satellite • GMC 6500 S/A Chip Truck.

SPORTS UTILITY VEHICLES: 2011 Dodge Durango AWD • 2013 Ford Explorer XLT 4x4.

PICKUPS: 2008 Chevrolet Colorado LT Extended Cab 4x4 • Dodge Ram 3500 SLT Crew Cab Dually • Ford F350 Lariat Super Duty Crew Cab Dually • 2013 Ford F250 XL Super Duty Crew Cab 4x4 • 3- 2010 Ford Ranger Extended Cab • 2008 Ford Ranger Crew Cab.

11- BUSES: Bluebird A3FE 78 Passenger • Ford 30 Passenger • International DT466E 72 Passenger • 2- International DT466E 84 Passenger • International T444E 53 Passenger • International T444E 66 Passenger • International VT365 65 Passenger • 2- International VT365 71 Passenger • Mack Vision 65 Passenger.

LOWBOYS: Load King 403DF.

HIBOYS: Wilson.

PNEUMATIC BULK TRAILERS: Heil.

VAN TRAILERS: Brown 34 Ft x 96 In. T/A • 2- Kentucky 53 Ft x 102 In. T/A Moving • Stoughton 53 Ft x 102 In. T/A • 2- Trailmobile • Wabash 53 Ft x 102 In. T/A.

TANK TRAILERS: 2- Etnyre.

EQUIPMENT TRAILERS: Cargo Express Pro Series 20 x 8 Ft T/A Enclose Utility • CZ CZ20KT 25 x 8 Ft T/A • 2011 Ditch Witch S1A • 2011 Trailer Express 18 Ft x 8 Ft 6 In. T/A • Trailer Express 18 Ft T/A Utility • W-W Trailer 24 x 8 Ft T/A Gooseneck.

REEL TRAILERS: TRBWT542RCSL S/A • 4RA4848188 T/A Spool Trailer • Pitman Brothers T/A Spool Trailer • Reel Master RM305035 • Wagner Smith.

15- TRAILERS: 2- Rotating S/A Spool • 5- Brooks Brothers PT92-XL 18 Ft T/A Extendable Pole • 2- Brooks Brothers 18 Ft T/A Extendable Pole Trailer • Butler 25 Ft S/A Pole • Cronkhite 20 Ft S/A Pole • Eagle 8000 20 Ft S/A Pole • Forte Trailer 24 Ft S/A Extendable Pole • 2- Utility 20 Ft S/A Extendable Pole.

MOBILE STRUCTURES: 2- Unused - 40 x 32 x 14 Ft Storage Building • 2- Unused - 40 x 24 x 14 Ft Storage Building.

Other items of interest

TELESCOPIC FORKLIFTS: Bobcat V723 Versa-Handler • John Deere 3420.

ROUGH TERRAIN FORKLIFTS: Manitou M240CP.

FORKLIFTS: 2008 Mitsubishi FG25N • Mitsubishi FG25K 4350 Lb • 2- Nissan MCPL02A20LV 3240 Lb • Toyota 7FGCU35 8000 lb • Yale 4650 Lb.

ELECTRIC FORKLIFTS: BT OE35 3000 Lb Stand Up Order Picker • Clark NP15 3000 Lb Reach Truck • Mighty Lift CS1546M • Mighty Lift CS1546M 3300 Lb Walk Behind Straddle Stack Electric Pallet Jack • Raymond EASIOPC30TT 3000 Lb Stand Up Order Picker • TCM FCB15A4.

SCISSORLIFTS: JLG 500RTS 50 Ft 4x4.

BOOM LIFTS: Genie TZ50 Tow Behind • JLG 600S 4x4 • JLG 600AJ 4x4 Articulated.

SPRAYER & SPREADING EQUIPMENT: 2015 Sprayer Specialties 3PT500E450590C 90 Ft 3 Pt Hitch.

SPREADERS: 3- 2014 & 2012 Rogator 1300 4x4x4.

LANDSCAPE EQUIPMENT: Ferris DDSKAV23 48 In. Walk Behind Lawn Mower • Turfco Turf Cutter.

LIVESTOCK EQUIPMENT: 6- Unused - Suihe 20 Ft Bi-Parting Wrought Iron Gates.

ALL TERRAIN VEHICLES: John Deere Gator All Terrain Vehicle.

RECREATIONAL VEHICLES: Gulf Stream Conquest 17 Ft T/A Camper.

ITEMS INCLUDE: Utility Cart • Air Compressors • Consumer Generator Sets • Light Generator Sets • Light Towers • Welders • Pumps • Concrete Equipment • Survey Equipment • Containers • Engines • Equipment Attachments • Truck Attachments • Industrial Items • Equipment Parts • Shop & Warehouse Items. • Parts / Stationary - Construction & Transportation.



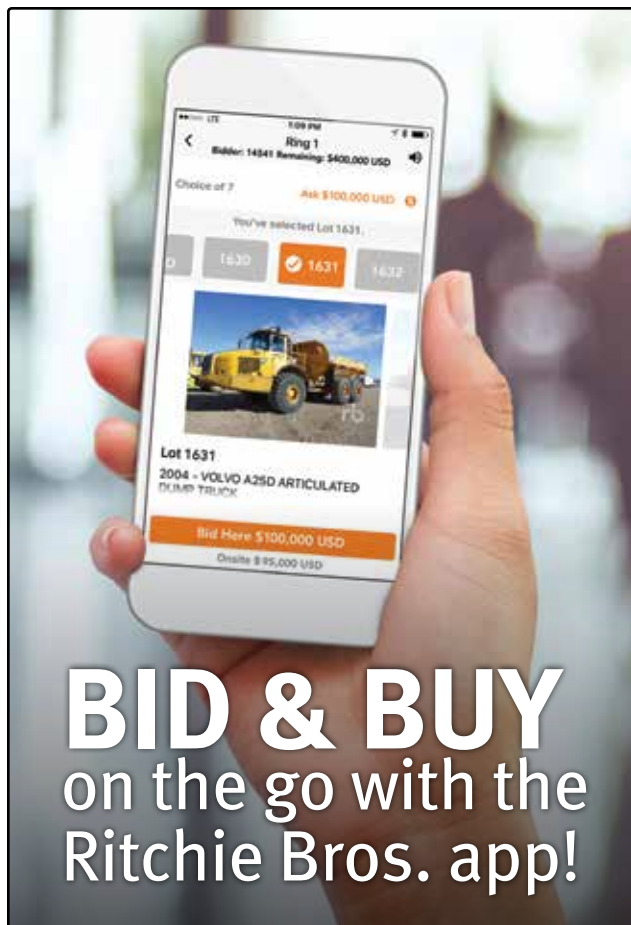
Your keys to getting exactly what you need.

Choose from **LeaseFlex™** or **PurchaseFlex Financing™** – available only from Ritchie Bros. Financial Services – to get equipment and trucks at payments that best meet your business’s needs. One application gets you access to both products and covers a wide range of equipment types and ages – what you buy is up to you.

Apply today
call 1.855.331.7237 or visit

rbauction.com/Flex

rb RITCHIE BROS.
Financial Services



BID & BUY on the go with the Ritchie Bros. app!

Download the app today.

Auctions in the palm of your hand – search equipment, register, and bid from anywhere.



Fast. Easy. Convenient. rbauction.com/app

Upcoming auctions around the world

USA

Atlanta, GA	Sep 12
Phoenix, AZ	Sep 13
Odessa, TX (Kruse Energy)	Sep 13–14
Columbus, OH	Sep 14
Las Vegas, NV	Sep 15
Nashville, TN	Sep 19
Sacramento, CA	Sep 20
Raleigh-Durham, NC	Sep 21
Los Angeles, CA	Sep 22
Kansas City, MO	Sep 22
St. Louis, MO	Sep 26
Salt Lake City, UT	Sep 26
Fort Worth, TX	Sep 27–28

Canada

Truro, NS	Sep 13
Montreal, QC	Sep 20–21
Toronto, ON	Sep 27–28
Grande Prairie, AB	Oct 4–5
Winnipeg, MB	*Oct 5

International

Ocana, ESP	Sep 13–15
Geelong, AUS	Sep 14
Dubai, ARE	Sep 19–20
Donington Park, GBR	Sep 19–20
Meppen, DEU	Sep 21

* NOTE NEW DATE



Case CX290



2 – Freightliner Columbia



2008 Western Star 4900FA



2012 Case TV380



2 – GMC 7500 w/Altec LRV55

» See complete and up-to-date listings for this auction at rbauction.com

St. Louis, MO | September 26, 2017 (Tuesday)

rbauction.com

rb RITCHIE BROS.
Auctioneers®