

Mansfield Park

Title Page

MANSFIELD PARK

Composition by:
Jonathan Dove

Libretto by:
Alasdair Middleton

Based on the book *Mansfield Park* by Jane Austen

World Premiere: Heritage Opera, Boughton House, Northhamptonshire, 30 July 2011

American Professional Premiere: Indianapolis Opera, Howard L. Schrott Center for the Arts on the campus of Butler University, 18-20 March, 2016

Length: 1 hour 45 minutes

Two Acts

Twenty-Minute Intermission

Synopsis:

Mansfield Park tells the story of Fanny Price, a young girl with a strong moral compass, sent by her impoverished parents to live at the home of her wealthy uncle Sir Thomas Bertram and his family. Unable to relate to her superficial female cousins and treated as an outsider in many ways by her adopted family, Fanny forms a strong attachment to Edmund, the youngest Bertram son. The arrival of brother and sister Henry and Mary Crawford, glamorous visitors to the neighborhood with romantic intentions of their own, threatens her love for Edmund.

Program Note

Composer Jonathan Dove has said that he hopes it will suggest to twenty-first century ears something of the early nineteenth century which it certainly does, but it's far from being a pastiche of the music of Austen's age. At times, you are very aware that you're hearing a modern opera, then suddenly the music flows into something altogether more lush and romantic (such as in the gorgeous Chapter Six, Music and Astronomy.) Underpinning the whole opera are the wonderful small choruses, which continually bring the cast and the story back together in joyous, moving bursts of beautiful, harmonious singing. By Chapter 7, Chapter the Last when all ten characters are on the set together and story is resolved, their sound combines wonderfully with the purposefully small space. Powerful, multifaceted and stirring, it provides an extremely satisfying end to a very clever opera that will no doubt improve to be extremely popular with small opera companies and wider audiences the world over.

Artist Biographies & Creative Team

Fanny Price - Kate Tombaugh

Lady Bertram - Barbara LeMay

Sir Thomas Bertram - Scott Hogsed

Maria Bertram - Samantha Lax*

Julia Bertram - Stephanie Feigenbaum*

Mr. Rushworth - Ganson Salmon*

Edmund Bertram - Gregory Gerbrandt

Aunt Norris - Donata Cucinotta

Mary Crawford - Leah Bobbey

Henry Crawford - Brett Sprague

Pug - Miss Betty **

* *Denotes Resident Artist.*

** *Appears courtesy of Kentuckiana Pug Rescue.*



Kate Tombaugh

Mezzo-Soprano **Kate Tombaugh** hails from Streator, Illinois. Her recent performances have included Jacques Brel is Alive and Well and Living in Paris with Performance Santa Fe, Carrie Pipperidge in Rodgers and Hammerstein's *Carousel* with Opera on the Avalon in St. John's, Newfoundland, and the title role in Handel's *Ariodante* with Cincinnati Chamber Opera. Her performance as *Ariodante* garnered the review, "big-voiced and petite mezzo-soprano **Kate Tombaugh** was terrific in the title role, utterly convincing

dramatically, and musically superlative. (Seen and Heard International) This upcoming April, Tombaugh will debut with the Paducah Symphony as soloist in Beethoven's Ninth Symphony.

Additionally, Tombaugh has sung professionally with the Santa Fe Opera, Utah Opera/Symphony, Opera Theatre of St. Louis, Opera Omaha, Winter Opera St. Louis, the Lexington Philharmonic, Jackson Symphony, and the Illinois Valley Symphony Orchestra. She is a frequent soloist with the Bach Ensemble of St. Thomas (Cincinnati, OH) and has premiered various song cycles and cantatas by living composers.

Tombaugh holds a masters degree in Opera Performance from CCM, and dual undergraduate degrees in Vocal Performance and English Literature from Illinois Wesleyan University. For more information on Tombaugh, please visit:

<http://www.katetombaugh.com>



Scott Hogsed

Scott Hogsed began his professional career with the San Francisco Opera Merola program singing the title role in *Don Giovanni*. From 2002 to 2007 he was a member of the New York City Opera company where he sang many roles, including Count Almaviva in *Le Nozze Di Figaro* and Anthony Hope in *Sweeney Todd*. While a fellow at Tanglewood he was filmed for PBS as Ned Keene in *Peter Grimes* under the baton of Seiji Ozawa. As a graduate student at Indiana University, he was heard in the roles of Ford in *Falstaff*, Figaro in *Il Barbiere Di Siviglia*, Enrico in *Lucia Di Lammermoor*, Germont in *La Traviata*, the title role in *Gianni Schicchi*, and Signor Naccarelli in Adam Guettel's *The Light in the Piazza*.

Most recently, he was Ford in FALSTAFF in Steamboat Springs, CO and Eisenstein in Anchorage Opera's production of DIE FLEDERMAUS. This year was his third season with Yuletide with the Indianapolis Pops under Jack Everly. Equity credits include a tour with the Theater of the Stars production of CAMELOT as Lancelot opposite Robert Goulet's King Arthur, Curly in OKLAHOMA!, and Liebeslieder in A LITTLE NIGHT MUSIC at the IRT starring Sylvia McNair.



Donata Cucinotta

Noted for her particularly fine soprano voice by Zachary Woolfe of *The New York Times*, **Donata Cucinotta** is an active performer of both opera and musical theater. Last season's notable engagements include a leading role in the world premiere of a new musical by Grammy winner Paul Sullivan, *The Last Ferryman*, at the Stonington Opera House; Second Lady in Opera Tampa's *Die Zauberflöte*; Josephine in Knoxville Opera's *HMS Pinafore*; a concert of Broadway favorites with Salt Marsh Opera; as well as a featured role in Bristol Riverside Theater's *Winter Musicale*. Upcoming engagements include her role debut as Donna Elvira in *Don Giovanni* at Opera Ithaca; her role debut as Nedda in *Pagliaggi* at Opera in the Heights; her company debut at Indianapolis Opera as Aunt Norris in *Mansfield Park*; the role of Susan Lawrence in *Big The Musical* at Shadow Lawn Stage; and a return to Bristol Riverside Theater for their annual Holiday Concert Series.

Cucinotta's notable appearances have also included the North American premiere of a Tone Poem by Mario Jazzetti at Avery Fisher Hall, Countess in *Figaro!* (90210), a new Spanish-English adaptation of *Le nozze di Figaro* with Morningside Opera, Gilda in *Rigoletto* at Opera Fort Collins, Musetta in *La Bohème* at Symphony Space, Fiordiligi in *Così fan tutte* with the Stony Hill Players, Nina in *The Firefly* at Ohio Light Opera, and Adele in *Die Fledermaus* at Amarillo Opera, and Knoxville Opera for which Alan Sherrod of the *Knoxville Metro Pulse* praised her bright and lively comedy. The same publication later named her one of Knoxville's "most memorable classical music performances ... a marvelous **Donata Cucinotta**

revealed the flexibility of her character of Adele by doing onstage cartwheels and a split.Ó

After graduating from Mannes College of Music, Cucinotta joined Shreveport Opera as a SOX (Shreveport Opera Xpress) artist where she understudied the roles of Violetta (*La Traviata*), and Susanna (*Le nozze di Figaro*) on the main stage. She also performed the role of Gretel in a touring production of *Hansel and Gretel*. As a member of Opera Colorado's ensemble, she appeared as Berta in *Il Barbiere di Siviglia*, understudied the Four Heroines in *Les Contes d'Hoffmann*, and sang the roles of Masha in *The Music Shop*, Juliette in *Roméo et Juliette*.

Cucinotta is a Metropolitan Opera National Council Regional Finalist, semi-finalist in the San Antonio Opera Competition, Audience Choice Award and Honorable Mention at the Shreveport Opera Singer of the Year Competition, first-place winner at the NATS Eastern Competition and a finalist at the Classical Singer Competition.



Leah Bobbey

Soprano **Leah Bobbey** is thrilled to make her debut with Indianapolis Opera. She was a Young Artist with Opera Colorado for their 2014-2015 season, which included performances on the mainstage as First Lady/ Pamina [cover] (*Die Zauberflöte*), as well as Hester Prynne in the premiere reading of Lori Laitman's *The Scarlet Letter*. In February 2015, she was a Regional Finalist for the Colorado District (Rocky Mountain Region) at the Metropolitan Opera Council Auditions. She is a two-time winner of the Michigan District Encouragement Award, in 2012 and 2011. Bobbey has performed and trained for multiple summers with Central City Opera and Seagle Music Colony. Favorite roles include Despina (*Così fan tutte*), Lauretta (*Gianni Schicchi*), Sister Margaretta (*The Sound of Music*), Bubikopf (Ullmann's *Der Kaiser von Atlantis*), and Lightfoot McClendon (*Cold Sassy Tree*). She was awarded First Place at the Kalamazoo Bach Festival's Young Vocalist Competition in 2012. Additionally, Bobbey was granted the Cheryl M. Carlucci Fellowship in Opera by the University of Houston, where she received her Master of Music degree in 2014. She received her Bachelor of Music degree at the University of Michigan in 2012.



Barbara LeMay

A mother of two small boys, hoosier mezzo **Barbara LeMay** most recently sang the role of Sarah in the premiere of the first act of *Hagar*, by William David Cooper, for the National Opera Association's *Sacred In Opera* initiative. Prior to that, in December 2015 she sang the Mother in *Amahl and the Night Visitors* with Resonance Works Pittsburgh for the second year in a row.

In 2016, after singing the delightful Lady Bertram in *Mansfield Park*, LeMay will appear as Prince Charmant in *Cendrillon*, again with Resonance Works Pittsburgh.

In recent seasons, LeMay has appeared as Polinesso in Handel's *Ariodante*, Charlotte in *Werther*, La Zia Principessa in *Suor Angelica*, and as Mezzo Soprano No. 2 in the world premiere of Line Tjørnhøj's chamber opera *Oration* with the Center for Contemporary Opera.

LeMay has also sung the roles of Suzuki in *Madama Butterfly*, Bersi in *Andrea Chenier*, Zweite Dame in *Die Zauberflöte*, Prince Orlofsky in *Die Fledermaus*, Lucretia in *The Rape of Lucretia*, Zita in *Gianni Schicchi*, Gertrude in *Hansel and Gretel*, and Aurelia in Oscar Straus's *The Chocolate Soldier*. She has performed with New York City Opera, Pine Mountain Music Festival, Asheville Lyric Opera, St. Petersburg (FL) Opera, Liederkrantz Opera Theatre, Elgin OPERA, Norwalk Symphony Orchestra, Cincinnati Chamber Opera, and Opera Company of Brooklyn, and created the role of the Nurse with Glimmerglass Opera in *Strawberry Fields*, a one act opera from the triptych Central Park, broadcast on PBS and receiving an Emmy Award

nomination.

LeMay's art song album, *In The Garden*, features garden-themed art songs by Mattox, Brahms, Strauss, Schumann, Wolf, Respighi, Chaminade, and Fauré.

She is a graduate of Yale University's Master of Music and Artists Diploma programs.



Brett Sprague

American tenor **Brett Sprague** has been praised for his vocal and dramatic quality on stages across the United States. Past professional credits include Antino's (*Pěznělope*) with Vespertine Opera, Don José and Remendado (*Carmen*), Tamino and First Man in Armor (*Die Zauberflöte*), Borsa (*Rigoletto*), and the Registrar (*Madama Butterfly*) with Opera Colorado, Almaviva (*The Barber of Seville*), The Witch (*Hansel & Gretel*), and Romeo (*Romeo & Juliet*) with Opera Colorado's touring productions, Malcolm (*Macbeth*) and Rector Adams (*Peter Grimes*) with Chautauqua Opera, Little Bat (*Susannah*) and Mordcha (*Fiddler on the Roof*) with Ash Lawn Opera, Ernesto (*Don Pasquale*) with Amore Opera, Tenor Swing (*The Most Happy Fella*) with Dicapo Opera, Tamino (*Die Zauberflöte*) with New York Lyric Opera Theatre, and Nemorino (*L'œlisir d'Amore*) with Tuscia Opera Festival, among others. Sprague has performed as a soloist in concerts across the United States in venues such as the Stern Auditorium at Carnegie Hall, The Ellie Caulkins Opera House, and the Historic Amphitheatre at the Chautauqua Institution. He has received awards from The Metropolitan Opera National Council Auditions - Rocky Mountain Region, Chautauqua Opera, Opera Colorado, the Boulder Opera International voice competition, Career Bridges, and the Joan Ades vocal competition. A native of Tacoma, WA, he holds degrees from Chapman University and Manhattan School of Music. Upcoming engagements include Arturo (*Lucia di Lammermoor*) with Opera Colorado.



Gregory Gerbrandt

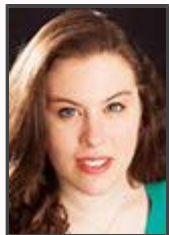
Garnering critical acclaim around the globe, American baritone **Gregory Gerbrandt** has performed with opera and symphonic organizations on five continents, singing for ambassadors and other officials from all over the world. Before earning his Master of Music degree from the University of Cincinnati-College Conservatory of Music, Gerbrandt obtained a Bachelor of Music from the University of Northern Colorado, where he was twice awarded the prestigious distinction of *Scholar of the Year*. Gerbrandt was also given the highest recognition by his high school alma mater: induction into the Greeley West Hall of Fame. Besides four World Premieres, Gerbrandt can be heard on the original cast recording of Kamran Ince's opera, *Judgment of Midas*, released last year on Albany Records. By contrast, Gerbrandt is in high demand to perform the prominent standards of Italian, French, and Russian opera. In addition to *Mansfield Park*, Gerbrandt's season includes Marcello in *La bohème* and the baritone soloist in *Carmina Burana*, both with Utah Festival Opera, Older Jim Thompson in *Glory Denied* with Syracuse Opera and with Opera Idaho, Belcore in *L'œlisir d'Amore* with the Bahamas Opera Festival, Frank Schultz in Show Boat with Kentucky Opera, Malatesta in *Don Pasquale* with Opera on the James, Guglielmo in *Cos' fan tutti* with Opera Fort Collins, Marcello in *La bohème* with the Boulder Symphony, and a debut, headlining concert with the Toledo Symphony. Feel free to visit Gerbrandt's website www.gregorygerbrandt.com for upcoming performances and other bits of fun!acclaim



Samantha Lax

Soprano **Samantha Lax** is a New Jersey native currently based out of Boston, Massachusetts. Her roles include Barbarina (*The Marriage of Figaro*) with Opera Theater of Pittsburgh; Monica (*The Medium*) and Suor Dolcina (*Suor Angelica*) with Chicago Summer Opera; Papagena (*Die Zauberflöte*) with New England Conservatory; Cobweb (*A Midsummer*

Night's Dream) with Westminster Opera Theater. With New England Conservatory's Perkin Opera Scenes, she performed Adina (*L'elisir d'amore*), Amy (*Little Women*), Nannetta (*Falstaff*) and Semele (*L'figliastro*). This season, she is pleased to make her debut with Indianapolis Opera as Maria Bertram in Jonathan Dove's *Mansfield Park*. Lax holds her Master of Music from the New England Conservatory and her Bachelor of Music from Westminster Choir College.



Stephanie Feigenbaum

Hailed as a singer with "plenty of talent and potential" (Chicago Sun Times), is mezzo-soprano **Stephanie Feigenbaum**. A recent graduate of Northwestern University, she earned both her BM and MM and was featured as Mrs. De Rocher in *Dead Man Walking*, Meg in *Little Women*, Valletto in *L'Incoronazione di Poppea*, Mae in *The Grapes of Wrath*, Lucrezia in *Lucrezia*, and Mad Margaret in Gilbert and Sullivan's *Ruddigore*. A versatile artist, Feigenbaum has also performed Bach's *Magnificat* and *Cantata 37*, Handel's *Judas Maccabaeus*, Barber's *The Lovers*, Vivaldi's *Gloria*, and Pergolesi's *Stabat Mater*. She has been a soloist at Carnegie Hall on multiple occasions with the Hazamir International Choir, singing repertoire by modern Israeli composers. Summer credits include Dorabella in *Così fan tutte* and Second Spirit in *Die Zauberflöte* with the Aspen Music Festival and School, Maestra and Zelatrice in *Suor Angelica*, First Witch in *Dido and Aeneas* at the Hawai'i Performing Arts Festival, and The Shepherd in *L'Enfant et les Sortilèges* and Midinette in *Il tabarro* at the Castleton Festival. She won the 2014 Encouragement Award from the Illinois district of the Metropolitan Opera National Council Auditions, and spent the summer as a Young Artist at Chautauqua Opera.



Ganson Salmon

Born and raised in Indianapolis, tenor **Ganson Salmon** is a recent graduate of Ball State University. As an undergraduate, Salmon took on progressively challenging operatic roles, including David in *A Hand of Bridge*, chorus member in *L'elisir d'amore*, Bob in *The Old Maid* and the *Thief*, Marco in *Gianni Schicchi*, understudy for Werther in *Werther*, Don JosŽ in Bizet/Brook's *La Traviata*, and Rodolfo in Puccini's *La Bohème*. On the BSU concert stage, Salmon was soloist in Mozart's *Requiem*, and Bach's *Christ lag in Todesbanden* and participated in the young artist programs of the Opera Theater of Pittsburgh Summerfest in 2013 and Napa Valley Music Festival in California in 2014. His roles included Frid in *A Little Night Music* (OTP), Chorus roles in *The Tales of Hoffman* (OTP), Chorus member in *Penthouse Suite* and *Gospel Suite* (OTP), Oronte in *Alcina* (Napa) and Mayor in *Albert Herring* (Napa). Recently, Salmon was heard in Indianapolis's historic Christ Church as Guard Right in the premiere of *Hagar* by William David Cooper.



Miss Betty

Miss Betty is very excited to be making her stage and role debut with the Indianapolis Opera this season in the role of Pug. She landed this opportunity after being scouted by IO General Director Patterson and through rigorous casting calls. Miss Betty disclosed that, "She isn't new to this role having performed it all of her life." Miss Betty thanks Nicky King, her foster mom of Kentuckiana Pug Rescue, for introducing her to the world of opera and giving her this opportunity to shine. Surrendered at an Indianapolis shelter in December, Miss Betty looks forward to her "fur-ever home" and hopes to use her new found fame as a platform to shed light on the adoption process, not just for pugs, but all shelter and rescue animals.

Allegra Sorley

Allegra Sorley graduated from Ohio University in 2015 with a Master of Music in Piano



Performance as a student of Dr. Youmee Kim and is completing requirements for a Master of Music in Music Therapy. Last fall and again this spring, Sorley serves Indianapolis Opera as coach/accompanist for the Resident Artist Company. Sorley has won the Ohio Federation of Music Clubs Collaborative Piano Competition and Ohio University's school of music concerto competition where she performed George Gershwin's *Rhapsody in Blue* with the Symphonic Orchestra. Earning her Bachelor of Music degree in Piano Performance from Roosevelt University's Chicago College of Performing Arts, she studied with Dr. Winston Choi and studied previously at Indiana University's Jacobs School of Music with Andr  Watts and participated in masterclasses with Orli Shaham, Sean Chen, Martin Katz and Edward Auer, among others. In 2012, Sorley was featured live on Chicago's Classical Music radio station, WFMT, as part of their *Impromptu* Series. Sorley also performed in a two-hour live radio broadcast, *Live from WFMT*, in June of 2012 with her mother, Rebecca Sorley. Sorley has raised thousands of dollars in yearly benefit recitals for organizations including: the American Lung Association, Lymphoma and Leukemia Society, the American Heart Association, Special Olympics, the International Children's Heart Foundation. Originally from the Indy area, she currently resides south of Indianapolis.



Oksana Glouchko, *piano*

Russian-Israeli pianist Oksana Glouchko has had a multi-faceted career as a soloist, chamber player and teacher. Praised for her personal interpretive voice to the great classics of the piano repertoire, from Bach and Mozart to Rachmaninov and Ravel, she holds advanced degrees in piano performance from the Buchman-Mehta School of Music at Tel Aviv University, with additional studies at the DePaul University School of Music. She attained the Doctorate in Piano Performance from the State University of New York at

Stony Brook.

Dr. Glouchko has been a soloist at Switzerland's Bloney Festival, Mozart Fest in Valetta, Malta, and the International Festival and Institute at Round Top, in the United States. Recent engagements include Beethoven's *Concerto No. 4* with the Chile Symphony Orchestra, the Brahms *Concerto No. 1 in D Minor* with the Rishon-Lezion Symphony Orchestra, and the Rachmaninov *Rhapsody* with the Carter Symphony Orchestra of Tel Aviv.

Dr. Glouchko is a winner of the Claudio Arrau International Competition in Chile, The National Competition of Russian Composers and the Glinka National Piano Competition in Smolensk. Additional honors include fellowships and grants from the America-Israel Cultural Foundation, the Colton Foundation and the Buchman-Heyman Foundation. Her teachers have included Larisa Igoshina, Viktor Derevianko, Natasha Tadson, Eteri Andjaparidze and Gil Kallish.

Dr. Glouchko has formerly served as instructor in piano performance at SUNY Stony Brook. In great demand as a collaborator with singers, Dr. Glouchko has served on the coaching and accompanying staff of Israeli Opera, the IVAI International Festival for Opera Singers with Joan Dornemann, Musiktheatre Bavaria, Rollins College, Indiana Wesleyan University, and the NATS annual competition in New York City.

www.OksanaGlouchko.com

Creative Team

Karen Carpenter



Karen Carpenter is Artistic Director of the William Inge Center for the Arts and Producer of the nationally renowned William Inge Theater Festival, celebrating its 35th Anniversary in 2016. Karen directed the world premiere of Delia and Nora Ephron's *Love Loss and What I Wore*, which won the Drama Desk Award for "Best Theatrical Experience" and has since played around the world. Deemed a *Provocateur* and *Impresario* in the press for her concert stagings of Indianapolis Symphony's Your Concert Your Way series: *Riot of Spring* featuring Roger Rees, and *Hear Art, See Music Live*, featuring artists AndrŹ Miripolsky and Michael Arthur; tickets were in such demand for these concerts that they sold in record numbers.



Matthew Kraemer, Conductor

Recognized for his *musical sensitivity* and *energized sense of interpretation*, conductor **Matthew Kraemer** has led many of the nation's finest orchestras and currently serves as music director of the Indianapolis Chamber Orchestra, Butler County Symphony and Erie Chamber Orchestra. He has also served as associate conductor of the Buffalo Philharmonic and the Virginia Symphony Orchestra. <http://www.matthewkraemer.com>



Michael E. Downs

Set designer Michael E. Downs has worked on many opera sets including *Dreamkeepers* (Salt Lake City), *Cindrillon* (Boston), *The Marriage of Figaro*, *Falstaff* and *Masked Ball* (Lake George) *Manon* (Boston Lyric) *Rake's Progress* (Montreal) and *The Magic Flute* (Huntington).

He has also worked on a number of International tours including *My Fair Lady* starring Richard Chamberlain. Among his credits are a number of Broadway scenic coordinator roles, Off Broadway hits, Music Theatre companies and television credits. He is the

recipient of two Mary Jane Teall Awards, an After Dark award, an Adrian Award and three Sarah Awards. He is also a 2005 Emmy Award nominee for his work on NBC's Democracy Plaza Election Night.



Cory Pattak

Cory Pattak is a New York City based Lighting Designer whose credits include *Stalking the Bogeyman* (New World Stages), *Revolution in the Elbow* (Minetta Lane), *Handle with Care* (Westside Theatre), *Witnessed by the World*, *COAL*, *Do Not Disturb* (59E59), *Skippyjon Jones* (Theatreworks USA), *This Side of Paradise* (St.

Clements), *Unlocked*, *Nymph Errant*, *With Glee*, *The Blue Flower* (Prospect Theatre), *Hot Mess in Manhattan* (Chernuchin), *Ingmar Bergman's Persona* (HERE), *The Maiden's*

Prayer (InProximity Theatre), *Dreyfus in Rehearsal* (Beckett Theatre), and *Mercy Thieves, Ride* (Outhouse Theatre.)

Regional credits include *Flashdance* (US National Tour), *Dog and Pony* (Old Globe), *The Fabulous Lipitones* (Goodspeed), *A Little More Alive* (Kansas City Rep), *Lost Boy Found in Whole Foods* (Portland Stage), *Other Desert Cities* (Maltz Jupiter), *Single Girls Guide*, *A Christmas Carol* (Cap Rep), *Santaland Diaries*, *Fully Committed* (Syracuse Stage), *The Other Place*, *The Road to Where* (Weston Playhouse), *Always, Patsy Cline* (Bristol Riverside), *A Christmas Carol* (Arkansas Rep), *Shipwrecked!* (Penguin Rep), *A Chorus Line*, *Rent*, *My Fair Lady*, (Engeman Theatre), *High School Musical* (Surflight), *Les Miserables*, *Spelling Bee* (Northern Stage) International: *Letters to Santa Clause* (Misi Producciones, Bogot# Colombia)

Associate/Assistant: *Newsies*, *Peter and the Starcatcher*, *A Time to Kill*, *An Evening with Patti Lupone & Mandy Patinkin*, *The Story of My Life*, *Irena's Vow* (Broadway), *Heathers: the musical* (New World Stages), *Band*

Geeks, How to Succeed (Goodspeed), *Daddy Long Legs* (Off-Broadway/Regional/London), *Newsies*, *Chicago*, *Wizard of Oz*, *Peter Starcatcher* (US Tours), *Paint Your Wagon*, *Lost in the Stars*, *Where's Charley* (Encores!), *Essential Self-Defense*, *Rapture Blister Burn* (Playwrights Horizons), *The Internationalist* (Vineyard.) Cory is the host and creator of in 1: the podcast, a podcast featuring interviews with theatrical designers available at in1podcast.com and in the iTunes store. www.corypattak.com.



Holly Jenkins-Evans

Well known as a costume designer in regional theatres Holly Jenkins-Evans also has had many stints as costume shop manager and draper at major theatres throughout the U.S. Her theatrical credits include both design and production for approximately 200 productions around the U.S. including regional work at Actors Theatre in Louisville, Cincinnati Playhouse in the Park, Great Lakes Theatre Festival, and the IRT. She has maintained [Past Perfect Vintage](#), a vintage clothing business since 1992, buying, selling, and very occasionally collecting wonderful examples of older fashion. At her shop, she features quality vintage fashion from the Victorian and Edwardian eras to the 1970s, including selected designer clothing. A founding member of the Vintage Fashion Guild, Jenkins-Evans has supplied fashions to not only theatres, but design houses and museums in US and Europe as well. Jenkins-Evans also writes for the blog, A Vignette on Vintage Fashion.



Jonathan Dove

Jonathan Dove's music has filled opera houses with delighted audiences of all ages on five continents. Few, if any, contemporary composers have so successfully or consistently explored the potential of opera to communicate, to create wonder and to enrich people's lives.

Born in 1959 to architect parents, Dove's early musical experience came from playing the piano, organ and viola. Later he studied composition with Robin Holloway at Cambridge and, after graduation, worked as a freelance accompanist, répétiteur, animateur and arranger. His early professional experience gave him a deep understanding of singers and the complex mechanics of the opera house. Opera and the voice have been central priorities in Dove's output throughout his subsequent career.

Starting with his breakthrough opera *Flight*, commissioned by Glyndebourne in 1998, Dove has gone on to write over twenty operative works. *Flight*, a rare example of a successful modern comic opera, has been produced and broadcast many times, in Europe, the US and Australia. More recently, *The Adventures of Pinocchio*, premiered by Opera North at Christmas 2007, achieves another rare feat in contemporary opera, being a successful full-length symphonically conceived entertainment for a family audience. It too has been produced across the world.

Dove's innate understanding of the individual voice is exemplified in his large and varied choral and song output. He carol *The Three Kings* was commissioned for the famous Nine Lessons and Carols services at King's College, Cambridge. Dove's confident optimism has made him the natural choice as the composer for big occasions. In 2010 *A Song of Joys* for chorus and orchestra opened the festivities at the Last Night of the Proms. Works such as his *Missa Brevis*, *Wells Canticles* and *The Passing of the Year* are in repertoires of choirs across the world.

A sure sense of dramatic narrative also informs Dove's orchestral and instrumental music. *Stargazer*, a concerto for trombone and orchestra commissioned by the London Symphony Orchestra and premiered by them with Ian Bousfield and Michael Tilson Thomas, has been described by Dove as an

opera for the solo instrument. *In The Magic Flute Dances*, a flute concerto, Dove imagines the life of Mozart's eponymous instrument once the opera has ended.

Throughout his career Dove has made a serious commitment to community development through innovative musical projects. *Tobias and the Angel*, a 75-minute opera written in 1999, brings together children, community choirs, and professional singers and musicians in a vivid and moving retelling of the *Book of Tobit*. His 2012 opera *Life is a Dream*, written for Birmingham Opera Company, was performed by professionals and community choruses in a disused Birmingham warehouse, and a church opera involving community singers *The Walk from the Garden* was premiered at Salisbury Cathedral as part of the 2012 Salisbury International Arts Festival.

**Abraham Sheckels,
Production Stage Manager**

**Bridgette Richards,
Diction Coach**

**Heidi Keller-Phillips,
Choreographer**

**Oksana Glouchko,
Rehearsal Pianist**

Dressers

Delane Wood, Costume Coordinator
Stephanie Rossell
Deeanne Bauer
Michelle Zimmerman

Wig/Make-up Apprentices

Casey Lowenthal
Charlie Lucky
Olivia Anton

IO Staff

Kevin Patterson,
General Director

Carol U. Baker,
Director of Community Engagement

Jan Need,
Director of Development

Jill M. Vandegriff,
Director of Marketing and Communications

Stephen Goldberg,
Operations Manager

Hannah Wheeler,
Patron Relations Assistant

Alisia Morales,
Accountant

Welcome Letter



Welcome to the American premiere of Mansfield Park! Indianapolis Opera is delighted to host the composer, Jonathan Dove, and wish to thank both the members of the Jane Austen Society of North America and Pug Rescue of Kentuckiana for their support of this production.

Opera companies across the country, from Indianapolis to the Metropolitan Opera, are always trying to find ways to satisfy confirmed opera lovers as well as excite new ones. New works like Mansfield Park deliver new experiences -- while opening nontraditional avenues for incorporating untraditional partners like JASNA and Pug Rescue. This is just one of many ways Indianapolis Opera is striving to deliver a richer experience.

A richer experience for Indianapolis Opera includes providing education, inspiration and entertainment through the creation of musical storytelling. IO is not just an opera company or an organization that produces educational programming for area schools and older adult organizations.

Our artistic vision is driven by three core beliefs. The human voice is capable of the greatest range of expression. The stage is a community forum for engagement and communication. It is through the telling of stories that we truly define our humanity. With these beliefs as our foundation, we invite you to take a journey with us that will engage, inspire, transform and entertain you.

We are grateful to the talent joining us for three performances: a mix of seasoned professionals and new talent from our Resident Artist program. We also appreciate the conductor Matthew Kraemer of the Indianapolis Chamber Orchestra, the staff of the Schrott Center for the Arts, and the very fine crew from IATSE, Wardrobe Local #893 and Stagehands Local #30. We are also most appreciative for the contributions of Ben Solomon and Solomon-Paris Antiques & Interiors. Craig Gigax of Steinway Piano Gallery of Indianapolis, and Cyndi Harron of Simpson & Vail, Inc.

A voice, a stage, a story to tell. We are Indianapolis Opera. Welcome!

Kevin Patterson
General Director

Schrott Center Info

Box Office:

Located at 4011 N Penn St.

Monday-Thurs: 10-5

Friday: 10-1

Tickets available online 24/7 at www.indyopera.org

For more information call:

(317) 283-3531 and speak with Hannah Wheeler.

Lobby: The lobby doors of the Howard L. Schrott Center for the Arts will open at least one hour prior to curtain.

Concessions: Food and beverages purchased at the Schrott Center are allowed in the theatre. Please notify event staff of any spills.

Phone Number During Events: In the event you need to be contacted during an event, notify event staff of your need and leave your name and seat location. Instruct those contacting you to call 317-940-ARTS (2787).

Cellular Phones and Texting Devices: Please turn your phones to airplane mode while in the theater. Out of respect for the performers and audience members, we ask you to silence and dim all electronic devices.

Cameras and Video/Audio Recording Devices: According to artist contractual agreements, the use of these devices is prohibited in the theatre.

Latecomers: According to artist contractual agreements, patrons who arrive late will be seated at the first appropriate opportunity. The Schrott Center makes every attempt to begin each performance on time. Patrons are recommended to arrive no later than 15 minutes prior to the performance start time.

Bags: Howard L. Schrott Center for the Arts reserves the right to inspect any bag or package being brought into this facility.

Accessibility: Seating on the main floor is barrier-free with ramping for easy access to the lobby, restrooms and parking.

Please contact Indianapolis Opera at least 48 hours before a performance to let us know how we can make your visit more comfortable.

Hearing Assist Devices are available upon request.

ADA Parking: This is located directly behind the Schrott Center for the Arts next to Clowes Memorial

Hall. To enter the lot, take a left off of Sunset Avenue. The main drive may be used for drop-offs.

Children: All children must possess a ticket for admission to Schrott Center for the Arts.

Please contact (317) 283-3531 for questions regarding program content.

We strongly recommend that children two and under not attend performances.

Elevators: Call stations are located on all levels next to the main staircases. If needing access to the Loge, a call stations is to the right of the concessions.

Information Desk: The information desk is located within the Box Office, located to the left of the main lobby.

Restrooms: Main Lobby
Left side: Women's
Right side: Men's
All are Wheelchair-accessible

Emergency Evacuation: Exits are conveniently located throughout the theatre. Note your closest exit may be behind you.

In the event of an emergency, please do not run. Walk slowly and listen for additional instructions.

Smoking: For the safety and enjoyment of all patrons, smoking is permitted only in the designated area. Directional signs are located outside Clowes Memorial Hall.

Lost and Found: Located in the Box Office. Please contact the Front of House Manager with any items.

Medical Assistance: Contact the Information Desk or a Front of House worker. Butler University Police are on call and will assist with vehicle access and emergency actions.

2015-2016 Board Of Directors

Arnold C. Hanish,
President

Matthew Mindrum,
Vice President

William J. Garvey,
Vice President

Muffi James,
Vice President

Ponce DeLeon Tidwell,
Vice President

Jeffrey Garfield,
Treasurer

Garry Frederickson,
Foundation President

Katrina Basile
Claudette Einhorn
Jamie Gibbs
Alan Goldstein
Louise Hartigan
Barbara Hayford
Ted Jones
Eric Martin
Eric Moy
Susan McGinty
Anthony Najem
Dr. Ora Pescovitz
Leslie Rubin
Silvana Martini Schuster
Robert Thomas

Honorary Board

Frank Basile
John Bradburn
Angela Brown
Patricia Curran
Robert Driver
Caroline Farrar
Phyllis Feigenbaum
Kathryn Ferrugia
Julie Griffith
Edward Hartigan
Robert D. Knapp
Jeffrey O. Lewis
Bonnie Reilly
Mary M. Sutherland
Dr. Douglas P. Zipes

Upcoming Events

Sundays at the Basile Opera Center

General Admission \$20 per person or Purchase a series of 3 performances for \$50 per person. Watch IndyOpera.org for more information.

ButlerFest

A joint presentation with Butler University for a sneak peek at Indianapolis Opera's 2016 season opening World Premiere. Join us on Saturday, April 16 at 2 p.m.

CRESCENDO

A joint concert with the Indianapolis Chamber Orchestra to kick off the summer at White River State Park. Friday, May 27.

Get your tickets online at IndyOpera.org or call the box office at (317)283-3531 from 10 a.m. to 5 p.m. Monday and Tuesday, 10 a.m. to 4 p.m. Wednesday and Thursday, and 10 a.m. to 1 p.m. Friday.

Education Programming

Dates are still available for Spring 2016 programming February 22 ÷ April 24. Call now to schedule for the Fall 2016 semester, September 6 ÷ October 30. Call Carol Baker at (317) 283-3531.

watch www.IndyOpera.org for more information

Individual Contributors

January 1, 2015 - February 1, 2016

Bel Canto Society

\$25,000 +

Ms. Kay Koch

Aria Society

\$15,000 - \$24,999

Encore Society

\$10,000 - \$14,999

Intermezzo Society

\$7,500 - \$9,999

Mr. and Mrs. George G. Graham

Virtuoso Circle

\$5,000 - \$7,499

Mr. and Mrs. Larry Bird
Mr. and Mrs. Garry Fredericksen
Mr. and Mrs. William J. Garvey
Mr. and Mrs. Alan Goldstein
Mr. Arnold Hanish
Mr. and Mrs. Edward Hartigan
Dr. Richard E. Lindseth
Mr. and Mrs. Eric R. Moy
Ora H. Pescovitz

Overture Circle

\$2,500 - \$4,999

Anonymous
Mr. and Mrs. Frank Basile
Mr. and Mrs. Robert Driver
Claudette and Larry Einhorn
Mr. and Mrs. Thomas E. Reilly, Jr.
Dr. and Mrs. Louis Vignati
Judy L. Woods and John Koppitch
Dr. and Mrs. Douglas Zipes

Impresario Circle

\$1,000 - \$2,499

Anonymous
Ms. Sarah Barney
Mr. Ron Brock and Mrs. Ann Thompson
Mr. and Mrs. Philip Capasso
Daniel Corrigan
Mrs. William Curran
Dr. and Mrs. Harvey Feigenbaum
Dr. and Mrs. Michael Flaugh
Mr. Jamie Gibbs and Mr. Paco Argiz
Jane Gradison
Earl Harris Trust
Mrs. John Hayford
Mr. and Mrs. Jim James
Ted Jones
Mr. and Mrs. Robert D. Knapp
Mr. and Mrs. Jeffrey O. Lewis
Mr. Eric Martin
Matt and MaryAnn Mindrum
Mr. and Mrs. Anthony Najem
Mr. and Mrs. Michael Rubin
Mr. and Mrs. Michael Stayton
Ms. Jennifer Sugarman and Mr. Konrad J. Banaszak

Mr. J. Patrick Tatum
Douglas L. Tillman

Patron

\$500 - \$999

Mr. and Mrs. E.M. Cavalier
Dr. and Mrs. Louis Chenette
David and Ellen Crabb
James and Shirley Dora
Mrs. Dorothy Schulz Englehart
Jane Gradison
Mr. and Mrs. James B. Lootens
Mr. and Mrs. Terren Magid
Silvana M. Schuster
Mrs. Rita Spalding
Mr. and Mrs. Ponce Tidwell, Jr.
Lynda Van Kirk
Mr. and Mrs. Daniel Viaches
Emily A. West
Dr. Christian Wolf and Elaine Holden-Wolf

Sustainer

\$250 - \$499

Dr. Lisa Bauman
Mr. and Mrs. David Berger
Mr. and Mrs. Robert Dyer
Mrs. Lolly Glasel
Ms. Lisa J. Heid
Dr. and Mrs. Michael McRobbie
Donald and Karen Perez
Richard R. Plath
Mr. and Mrs. Christopher Reinhold
Mr. and Mrs. Mike Schultz

Supporter

\$100 - \$249

Anonymous (5)
Mrs. Taylor L. Baker, Jr.
Dr. Christina Bodurow
Ted and Peggy Boehm
Joseph and Nicole Brown
Mrs. Gay Burkhart
Drs. Dwight and Audrey Burlingame
Dick Butler and Jamie Street
Dr. and Mrs. Thomas Cortese, Jr.
Col. and Mrs. Lawrence T. Daly
Mr. Mack Furlow
Mr. Larry Griggers and Ms. Julie Siegler
Dr. Jan Guffin
Mr. and Mrs. David Haskett

Dr. and Mrs. Samuel M. Hazlett III
Rosalie Held
Eleanor and Joseph Hingtgen
Ginny Hodowal
Marty Hollingsworth
Mr. and Mrs. Tom Inui
Mr. and Mrs. William A. Kerr
Dr. R.T. Kirsten
Bob and Marilyn Kuhn
Mr. and Mrs. Thomas A. Landshof
Mr. and Mrs. Ted Lilly
Mr. James Mannon
Mr. Paul McNeely
Dr. Patricia Mirsky
Mr. Graham Denby Morey
Scot and Tanya Overdorf
Ms. Jane Paine
David and Catherine Patterson
Donald and Karen Perez
Keith and Karen Phelps
Scott and Susan Putney
Mr. and Mrs. Fred Schlegel
Mr. and Mrs. Mike Schultz
Peter Grossman and Pauline Spiegel
Mr. and Mrs. C. David Smith
Mary Lou Stanley
Mr. and Mrs. Stephen Stitle
Dr. and Mrs. Paul Valliere
Ms. Ann S. Word

Contributor

\$1 - \$99

Glen Bishop
Jonathan and Mindy Brant
Mrs. Gay Burkhart
Mr. and Mrs. Donald Craft
Mr. Thomas Davidson
Dr. and Mrs. Stephen R. Dunlop
Ms. Mary Fortney
Barbara R. Furlow
Mr. Alan Hamburger
Mr. August M. Hardee II
Mr. Christopher Hogg
Mr. Brian Kaminski
Tracy Kerney
Mr. and Mrs. John Kirby
Ms. Gina Laite
Mr. Matthew McGuire
Robert and Janice Meyer
Ms. Mary Miller
Mr. Daniel Moyer

Gail and Roger Myers
Ms. Ursula Nicola
Mary Diaz Przybyl
Ms. Joyce Ribble
Ms. Florence Roisman
Ms. Lisa Rodriguez
Mr. Hector Rosa and Ms. Jenny Bizzoco
Steve and Jackie Salmon
Mr. Joseph Smagacz
Andrew and Susan Swenson
Robert and Phyllis Wheeler
Mr. Bernard Wurger

Corporate/Foundation Contributors

January 1, 2015 - February 1, 2016

Bel Canto Society

\$25,000 +

Allen Whitehill Clowes Charitable Foundation, Inc.
Lilly Endowment, Inc.
Eli Lilly and Company
William S. and Kristi S. Oesterle Fund, A Fund of the Indianapolis Foundation
The Herbert Simon Family Foundation
Christel DeHaan Family Foundation

Aria Society

\$15,000 - \$24,999

Nicholas H. Noyes, Jr. Memorial Foundation, Inc.

Encore Society

\$10,000 - \$14,999

Central Indiana Community Foundation
Capital City Ford
Arts Council of Indianapolis and the City of Indianapolis
USA Funds

Intermezzo Society

\$7,500 - \$9,999

Virtuoso Circle

\$5,000 - \$7,499

Barnes & Thornburg
The Sidney and Kathryn Taurel Foundation, Inc.
J.P. Morgan Chase
Nordstrom
The Stephan and Renee Rollin Family Charitable Foundation
Simon
The National Bank of Indianapolis
The Waterfield Foundation

Overture Circle

\$2,500 - \$4,999

Buckingham Foundation
Cavalier Family Foundation
Ice Miller
McGuire-Patmor Fund and Mr. Peter Fulgenzi
Jamie Gibbs and Associates
Lumber Liquidators Inc.

Impresario Circle

\$1,000 - \$2,499

The Glick Family Foundation
Joanne W. Orr Charitable Fund, A Fund of the Indianapolis Foundation
Merrill Lynch
21st Amendment
Katz Sapper Miller
Still Moon
Wallington Asset Management
Monarch
Sun King Brewing
The Penrod Society

**Memorial/Honor
Contributions**

January 1, 2015 - February 1, 2016

In Memory of Jack Hayford

Mrs. Barbara Hayford
Mr. and Mrs. Harry Bailey
Mr. and Mrs. Ronald Banta
Ms. Sarah Barney
Mr. and Mrs. James Bell
Mr. and Mrs. Fred and Anette Biesecker

Mr. Mark Chestnut
Ms. Shanna Coakley
Mrs. William Curran
Mr. and Mrs. Henry Dabek, Jr.
Mr. Delain Danehey
Ms. Sherry Faris
Ms. Irina Fays
Mr. and Mrs. David Frick
Mr. and Mrs. William Garvey
Mr. and Mrs. Alan Goldstein
Mr. Arnold Hanish
Mr. and Mrs. Edward Hartigan
Mr. and Mrs. Jim James
Mr. and Mrs. Allen Langdon
Mr. and Mrs. Jeffrey Lewis
Mr. and Mrs. Stephen and Gloria Morrall
Mr. Douglas Pendleton
Simone Pilon and Michael Hartt
Ms. Anita Sarafa
Mr. and Mrs. J. Albert Smith
Dr. and Mrs. Louis Vignati
The Wine and Food Society of Indianapolis

In Memory of William Curran

Dr. and Mrs. Lawrence Einhorn
Mr. and Mrs. Garry and Louise Fredericksen
Mr. and Mrs. Alan Goldstein
Mr. Arnold Hanish
Mr. and Mrs. Jim James
Ms. Cristy Sagalowsky
Mr. and Mrs. Tom and Judy Sanger

In Memory of Andrew James

Mrs. Patti Curran
Dr. and Mrs. Lawrence Einhorn
Dr. and Mrs. Harvey Feigenbaum
Mr. and Mrs. Alan Goldstein
Mr. Arnold Hanish

In Memory of Dorothy Barnes

Mr. and Mrs. Garry and Louise Fredericksen

In Memory of E. Kirk McKinney

Mr. Ralph G. Nowak

In Memory of Jacquelyn Lyerly

Kelly Bentley

In Memory of Jessie McCune

Mr. J. Patrick Tatum

In Memory of Nancy Irsay

Mr. and Mrs. Walter Wolf, Jr.

In Memory of Reid Roberts Miller

Philadelphia Sinfonia

In Memory of Deborah Fortune

Mrs. Patti Curran

In Honor of Arnie Hanish

Donald and Dorothy Craft

In Honor of Barbara Hayford

Theodore and Linda Hegeman

In Honor of Claudette Einhorn

Jon and Andrea Pactor

In Honor of Matt Mindrum

Mr. and Mrs. Richard Michal

In Honor of David Hyde Pierce

Dawn Hershberger

In-Kind Contributions

In-Kind Donations

January 1, 2015 - February 1, 2016

21st Amendment
A Cut Above Catering
Ambrosia
Aronstam Designer/ Fine Jewelers
Barrington Jewels, Inc.
David and Alice Berger
Larry and Dinah Bird
Booth Tarkington Civic Theatre
Brickyard Crossing Golf Resort & Inn
Another Broken Egg Cafe
Brugge Brasserie
Georgia Buchanan
Capri Restaurant

Clowes Memorial Hall
Conner Prairie
Giannina Hofmeister-Connolly and James Connolly
Conrad, Indianapolis
Contour Hardening, Inc.
Crew Car Wash
Crooked Stick Golf Club
Patti Curran
Daddy Jack's
Day Furs
Distell USA
Divy
DL Lowry Hairspa Boutique
Down South Beverage Company, Inc.
Eddie Merlot's
Lawrence and Claudette Einhorn
Eiteljorg Museum
Elan Furs
Eli Lilly and Company Foundation, Inc.
Elite Island Resorts Caribbean
French Lick Resort
G. Thrapp Jewelers
William and Jill Garvey
Ghyslain Chocolates
Jamie Gibbs and Paco Argiz
Gilchrist & Soames
Ted Givens
Grapevine Cottage
Greek Islands Restaurant
Larry Griggers and Julie Siegler
Gymboree
Arnold Hanish
Edward and Louise Hartigan
Jeffrey and Leslie Hartigan
Heaven Hill Distillery
Historic Twin Oaks
Holiday Inn Express & Suites, Knoxville/Farragut
F. Boyd and Alice Hovde
Indiana Craft Beverage Association
Indiana Landmarks
Indianapolis Bridge Center
Indianapolis Colts
Indianapolis Motor Speedway
Indianapolis Opera
Indianapolis Star
Indianapolis Symphony Orchestra
J. Razzo's
Shirley Judkins
Kahn's Fine Wines
Denis Kelly
Late Harvest Kitchen

Jeffrey and Paula Lewis
Lumber Liquidators
Mark M. Holeman, Inc.- Landscape Architects and Contractors
Meridian Hills Country Club
Meridian Restaurant & Bar
Mo's Place for Steaks
Monkey Joe's
Moyer's Fine Jewelers
Music for All (Formerly Bands of America, Inc.)
Nicole-Taylor's Pasta & Market
North End Barbecue & Moonshine
Oakley's Bistro
Office of Mayor Greg Ballard- City of Indianapolis
Pacers Sports & Entertainment
Ora Pescovitz
Michael and Leslie Rubin
Sangiovese Restaurant
Richard Searles
Seasons 52
Segway of Indiana, LLC
Erika Shrum
Smarter Chocolate and Then Some
Ben Solomon
Solomon/Paris
St. Elmo
Still Moon
Styles by Ms. Ely, LLC
Sullivan Hardware & Garden
Sullivan's Steakhouse
Sun King Brewing Company
Tanque Verde Ranch
The Alexander Hotel
The Bridgewater Club
The Cake Bake Shop
The Center for the Performing Arts
The Children's Museum
The Columbia Club
The Handle Bar
The Pattern Store
The Trade Connection, Inc.
The Westin
Robert and Suzanne Thomas
Tiger Lily Restaurant
Union 50
Visit Knoxville
Walt Disney World
Warner Bros. Domestic Television
Windsor Jewelry
Woodchuck Hard Cider
Woody's the Library Restaurant
Aaron Young

Basile Opera Center



An ideal setting for weddings, parties and corporate events and meetings, the Basile Opera Center is conveniently located at 40th and Pennsylvania Streets -- 4011 N Pennsylvania St in the park-like setting of the Meridian Kessler neighborhood. The facility has both indoor and outdoor meeting and event spaces, as well as ample onsite and street parking.

The Recital Hall can seat up to 250 individuals in permanent setting and includes a balcony suitable for small musical ensembles and photography. Adjacent to the Recital Hall is a 1600 square foot Reception Room that includes a small finishing kitchen. The Recital Hall is a popular venue for non-sectarian weddings and corporate meetings.

The 5200 square foot, free span Great Room can accommodate 30 or more round tables, depending on layout of food service and dance floor. Adjacent to the Great Room is a 1000 square foot catering kitchen. The Great Room is often used for large parties and wedding receptions.

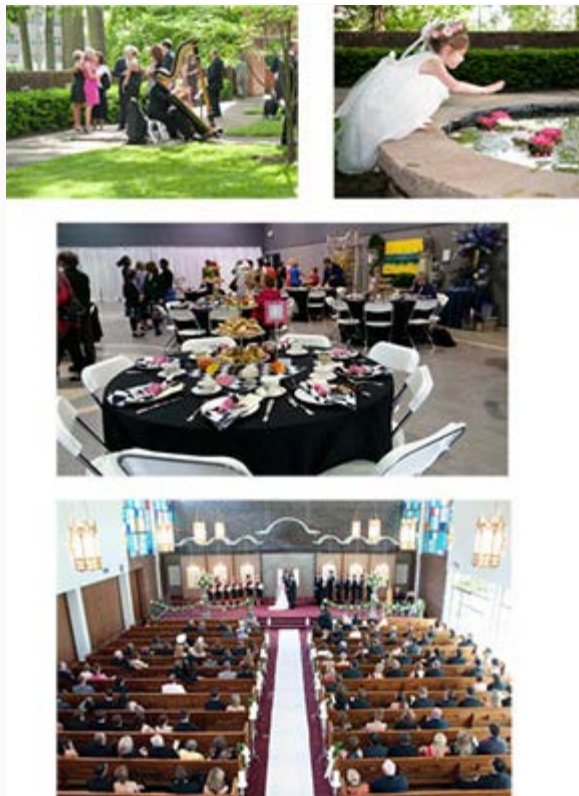
Outdoor space includes a 2000 square foot walled Terrace, adjacent to the Great Room and also provides access to the 2600 square foot, walled courtyard, adjacent to the Recital Hall.

The Basile Opera Center offers ample and flexible space for indoor, outdoor or combined events. Or, plan an outdoor event and know that you have an indoor backup plan.

For more information please contact Stephen Goldberg at 317.283.3531 Ext. 1006
or Goldberg@IndyOpera.org.

Resident Artist programming is scheduled April 10 and April 24.

Watch IndyOpera.org for more information.



The Annual Lobster Palooza



Join King Larry Bird and Queen Dinah Bird for the 7th annual Lobster Palooza on Saturday, July 16, 2016. Tickets on sale soon!

Watch IndyOpera.org for more information.



Thank you to Dinah and Larry Bird, sponsors, individual supporters and to everyone made this a night to remember!

SAVE THE DATE
LOBSTER PALOOZA 2016

Saturday, July 16, 2016



Contact Information

Indianapolis Opera
4011 N. Pennsylvania Street
Indianapolis, IN 46205

(317) 283-3531

www.IndyOpera.org

Take A Quick Survey

Like Us On Facebook