

STAGETEK™

STAGING SYSTEM



Wenger®





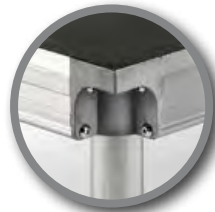
Everything about StageTek™ is an advancement. The refined, smart design is the result of extensive research, engineering and technical advancements in materials and manufacturing. Our staging system is lighter, stronger, easier to handle and faster to set up. When it comes to stretching your investment across multiple needs like seated risers and performance stages, StageTek sets a new standard. For unlimited flexibility, an extra set of legs stored under your deck is all you will need – that’s why we make the legs strong, simple and inexpensive. Compare Wenger’s StageTek Staging to any other option and see for yourself why your next stage or riser will be StageTek.



FAST, EASY, INTUITIVE SETUP

Round legs fit easily into corner pockets and become rock-solid with a single turn of a knob. The operation is completely intuitive. Anyone will know immediately how to setup StageTek without struggling with heavy folding understructures, or connections that require fussy alignment.

Plug-n-play leg connection is simple and fast. No tools. No folding frames or pins to align. As much as 20% faster and 15% lighter compared to alternative systems.



MORE STRENGTH & STABILITY

Our strongest stage deck ever has improved load ratings for the three most important load measurements. Compared to similar products, StageTek is the only system that exceeds performance expectations for uniform load, side load and point load.

- Uniform Load** = 125 lb/ft² (6 kN/m²) to 200 lb/ft² (9.6 kN/m²).
- Dynamic Live Load** = Side load of 15% of total Uniform Live Load which equals 600 lb (2.7 kN) side load on a platform under a total Uniform Live Load of 4,000 lbf (17.8 kN).
- Point Load** = 1,500 lb (6.7 kN) applied via 1" (25.4 mm) diameter pin.



ENHANCED SAFETY & HANDLING COMFORT

StageTek’s decks are at least 15% lighter than competitor systems and easier to grip, reducing potential for injury to your crew. StageTek allows for an ergonomic, secure and safe grip around the entire perimeter of the deck frame and is sized and contoured for maximum comfort.



MAXIMUM FLEXIBILITY

Flexibility between configurations and heights is all about the legs and that’s why we made them simple, strong, easy to use and inexpensive.

**Tiered Seating
Graduation Stage
Runways
Event Staging**

**Presentation Platforms
Drum Riser
Stage Extensions
Theatrical Sets**



Individual Platforms



Flat Stage



Multilevel Stage

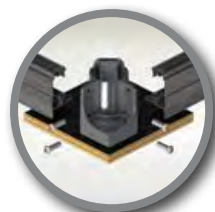


Seated Riser



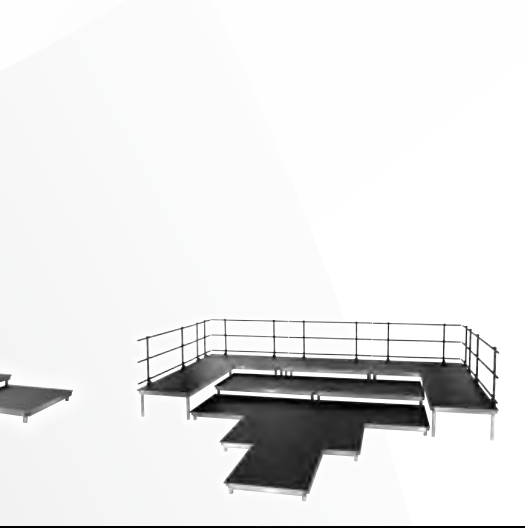
IMPROVED STORAGE & MOBILITY

Our rugged cart moves it all. Six decks and multiple sets of legs all on one easy moving cart. In fact, StageTek stores in 50% less space than some other competing products. Underneath a StageTek setup you have a wide open space unencumbered by frames and braces, opening up as much as 70% storage space under your decks.



DURABLE & REPAIRABLE

The lack of any folding connections in our design eliminates the source of loose parts, noisy rattles and failures. Components can be easily replaced to keep your decks fresh and new looking. With a 5-year warranty, simply the best peace-of-mind that your investment is covered.



STAGETEK™ STAGING SYSTEM

EASY SET-UP



DECK STORAGE AND TRANSPORT



SET UP



PLATFORMS

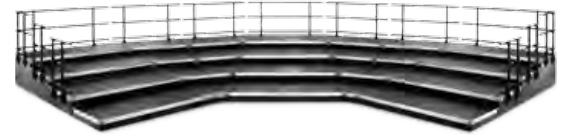


TIERED SECTIONS

Pie-shaped decks give you unmatched flexibility to create a variety of configurations.



FLAT OR MULTI-LEVEL STAGES



SEATED RISERS

Setting up single- or multi-level stages is fast and easy with various sets of legs, and Wenger's articulating stairway adapts to virtually any height you need.

StageTek allows you to create seated risers for any event. StageTek can also be configured into rectangular seated riser setups. You can further enhance your setup with side and front closure panels for a finished look that also keeps dust and litter from collecting underneath.



With a single set of StageTek decks and interchangeable legs of different lengths, you can create just about any staging setup you need in no time. The StageTek concept is simple. Instead of attached legs, StageTek decks have optional sturdy retention clips that store and transport interchangeable legs. By using legs of different lengths, a crew of two can turn StageTek into multilevel stages, seated risers, runways, speaker platforms, event stages, and just about any other configuration you can imagine.

VARIETY OF DECK SIZES, SURFACES AND LEG TYPES



LEG OPTIONS

FIXED HEIGHT LEG SIZES

8" (203 mm)
 16" (406 mm)
 24" (610 mm)
 32" (813 mm)
 40" (1016 mm)
 Available in any height



TELESCOPIC LEGS

16" - 28" (406 - 711 mm)
 24" - 40" (607 - 1016 mm)
 30" - 54" (762 - 1372 mm)



ADJUSTABLE LEGS

Available from 4" - 120"
 (102 - 3048 mm) in height

DECK OPTIONS

SIX STANDARD DECK SIZES

3' x 3' (914 x 914 mm): 37 lbs (17 kg)
 3' x 6' (914 x 1829 mm): 65 lbs (29 kg)
 3' x 8' (914 x 2438 mm): 87 lbs (39 kg)
 4' x 4' (1219 x 1219 mm): 59 lbs (27 kg)
 4' x 6' (1219 x 1829 mm): 85 lbs (39 kg)
 4' x 8' (1219 x 2438 mm): 107 lbs (49 kg)

Pie shaped and custom decks are available.



Shown with center leg option for heavy duty use.

A crew of two can set up an entire StageTek stage – with accessories – quickly. StageTek goes up without pins, tools or separate assemblies. Just slip the legs into the sockets and tighten.



1/4 Round Deck



Tri-Corner

SURFACE OPTIONS

StageTek Staging features a variety of surface options that won't curl or peel up like common laminated surfaces. Tough and long-wearing surfaces also provide excellent traction, even when wet.



Black Cracked Ice



Black Moroccan



Black Quadripole



Natural Hardwood



Grey Carpet



STAGETEK™ STAGING SYSTEM OFFERS MULTIPLE CONFIGURATIONS

TYPICAL STAGING SETS

Wenger offers complete StageTek staging sets tailored to your needs. As your needs change, you can simply order additional leg sets to accommodate new height requirements.

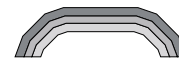
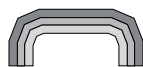
This is a small sample of what you can create.

Elevation	Dimensions	Number of Decks
24" (610 mm) 32" (813 mm)	12' x 16' (3658 mm x 4877 mm) "	Six 4' x 8' (1219 mm x 2438 mm) "
24" (610 mm) 32" (813 mm)	12' x 24' (3658 mm x 7315 mm) "	Nine 4' x 8' (1219 mm x 2438 mm) "
24" (610 mm) 32" (813 mm)	16' x 24' (4877 mm x 7315 mm) "	Twelve 4' x 8' (1219 mm x 2438 mm) "
24" (610 mm) 32" (813 mm)	16' x 32' (4877 mm x 9754 mm) "	Sixteen 4' x 8' (1219 mm x 2438 mm) "
24" (610 mm) 32" (813 mm)	20' x 32' (6096 mm x 9754 mm) "	Twenty 4' x 8' (1219 mm x 2438 mm) "

Typical sets can include any or all of the following: Two stairways with double handrails, drapery closures, guardrails and a universal cart – all the finishing touches needed for most applications.

PRE-CONFIGURED SEATED RISER SETS

Many facilities use StageTek in rehearsal rooms as a way to elevate seating for better sightlines without losing any of the cubic volume critical to good acoustics.



3' (914 mm) DEEP TIERS

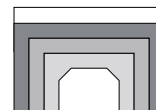
Capacity*	Horseshoe Shape	Wing Shape	Arc Shape
51-60	26'11" x 16'6" (8204 x 5029 mm)	38'11" x 10'6" (11862 x 3200 mm)	35'5" x 14'9" (10795 x 4496 mm)
72-88	36'11" x 18'6" (11252 x 5639 mm)	52'11" x 10'6" (16129 x 3200 mm)	48'3" x 16'2" (14707 x 49226 mm)

4' (1219 mm) DEEP TIERS

Capacity*	Horseshoe Shape	Wing Shape	Arc Shape
51-60	34' x 21' (10363 x 6401 mm)	50' x 13' (15240 x 3962 mm)	45'4" x 18'8" (13818 x 5690 mm)
69-84	50' x 21' (15240 x 6401 mm)	66' x 13' (20117 x 3962 mm)	61'4" x 18'8" (18694 x 5690 mm)

RECTANGULAR SETS

Capacity*	Dimensions
36-40	28' x 16' (8534 x 4877 mm)
72-84	48' x 20' (14630 x 6096 mm)



Seated riser sets can be configured into several shapes simply by changing the location of the pie sections.

Wenger can assist you to create a set that will work for you.

*First seating capacity number indicates capacity without a row of chairs on the floor. Second number indicates seating capacity with one row of chairs on the floor. Seating capacities are based on 32" (813 mm) (band/orchestra) and 26" (660 mm) (choral) chair spacing. Back row extensions are available.



UNIVERSAL MOVE & STORE CART



Universal Move and Store Cart – For Decks and Guardrails.

10-unit horizontal cart kit also available.

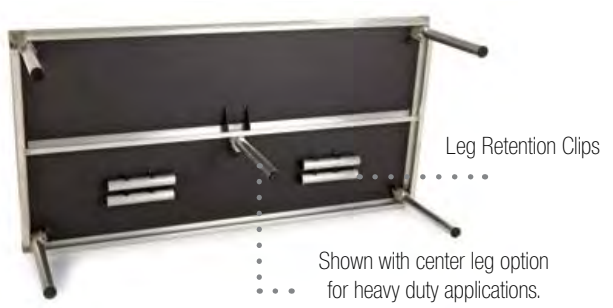


GUARDRAIL WITH INFILL PANEL

ACCESSORIES

PLUG-N-PLAY LEGS AND CENTER LEG OPTION

StageTek Staging allows you to have the flexibility to create a concert stage with presence. And by using legs of different lengths, you can easily and affordably add touches like a raised percussion area.



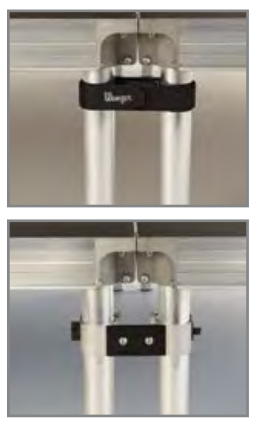
Leg Retention Clips

 Shown with center leg option for heavy duty applications.

Fixed Height, Adjustable Legs and Telescopic Legs

CLAMPS, CONNECTORS AND BRACES

Each deck comes standard with two leg straps. Optional Retention Clips mount under the deck to provide leg storage and variety of metal leg to leg, leg to deck, overlap and anchor brackets are available. Stabilizing braces are recommended for certain configurations and heights over 56" (142 cm) and above. Optional deck-to-deck cam locks are built into the deck frame. Cams can be locked or opened via a small tool access hole on top of the platform. Center leg available for heavy-duty applications.



- Velcro Leg Strap (Standard)
- Leg-to-Frame Connectors
- Leg-to-Leg Connectors

- Low-Rise Bracket
- Stage Anchor
- Leg Retention Clips (set of 4)

Not shown: Overlap Bracket Available

Connection brackets determined by layout. Please consult with your Wenger Representative for suggested options.

ROLL-A-DECK KIT



Transform your StageTek Staging into a rolling riser. Easily supports heavyweight instruments like drums, keyboards or production equipment. Ideal for applications that require rapid setups and changeovers.



STANDARD GUARDRAIL

STANDARD GUARDRAILS AND OPTIONS FOR INFILL PANELS

Guardrails are 42" (1067 mm) high with a black powder paint finish and comply with IBC requirements for loading, featuring two uprights and two cross bars. An optional infill panel can be added that complies with the IBC 4" (102 mm) sphere code. Guardrails clamp to the stage without the need for tools and function as a chair stop.

Removable Chair Stops



Semi-Permanent Chair Stops (Installation requires drilling into decks)

NO TOOLS REQUIRED

DRAPERY AND CLOSURE PANELS

Drapery is available in heights to match the staging elevation and in a wide variety of colors. Drapery is Flame Retardant woven polyester. Solid closures are ideal for seated riser systems and connects to the rail without tools.

STAIRWAYS



DUAL-HEIGHT STAIRWAY
Available in 2-, 3- or 4-step units include handrails and safety treads.



ARTICULATING STAIRWAY
Variable-height stair units include removable safety and handrails treads. Available in 3-, 4-, 6- and 8-step models.



BOX STEPS
Configured to work with your StageTek Audience Seating. Custom widths and heights available.



MID-RAIL
Easily attaches to StageTek decks for use with audience seating applications.

ADA-COMPLIANT RAMPS



Made with stage Quadriple surface decking and legs, this ramp will connect easily with any stage setup you build.



Meets the requirements as outlined in the 2015 INTERNATIONAL BUILDING CODE - SECTION 1012





MORE THAN 70 YEARS OF EXPERIENCE GUARANTEES YEARS OF SATISFACTION.

Wenger Corporation was founded in 1946 to provide innovative, high-quality products and solutions for music and theatre education, performance and athletic equipment storage and transport. We have spent more than 70 years listening to what our customers need and then designing and developing durable, functional products to meet those needs – products that enhance any program and deliver what they promise year after year.



WENGER

Phone 800.4WENGER (493-6437) | Worldwide +1.507.455.4100 | Parts & Service 800.887.7145
wengercorp.com | 555 Park Drive, PO Box 448 | Owatonna, Minnesota USA 55060-0448

J.R. CLANCY

Phone 800.836.1885 | Worldwide +1.315.451.3440
jrclancy.com | 7041 Interstate Island Road | Syracuse, New York USA 13209-9713



© 2017 Wenger Corporation
USA/11-17/1000/LT0160F