

# *stair treads*

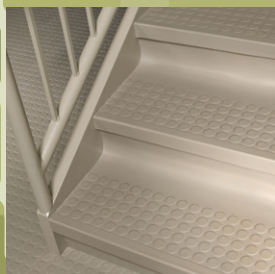
RUBBER RAISED DESIGN  
SPECIALTY | VINYL



Health Product Declaration®  
for Rubber Stair Treads is  
available at [roppe.com](http://roppe.com)

**ROPPE.**  
Proven. Flooring. Experiences.

#96 Vantage Profile w/Riser,  
191 Camel; #996 Vantage  
Design Tile, 191 Camel



## rubber treads

### RAISED DESIGN

Our line of PVC free rubber stair treads is the perfect complement to flooring projects in shopping malls, retail settings, government centers, hospitals and airports. Most styles offer ADA nose-compliant features. Better yet, they coordinate with our other tile designs and colors.

#### ON THE COVER:

#99 Hammered Treads w/o Riser,  
Symmetry S123 Charcoal;  
Envire® Rubber Sheet, S123 Charcoal

**ROPPE**  
Proven. Flooring. Experiences.

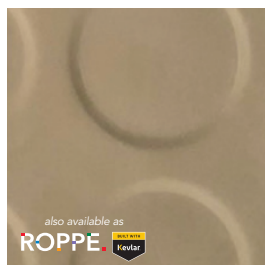
## rubber treads COLORS

70 SOLID COLORS (For all rubber tread profiles.)

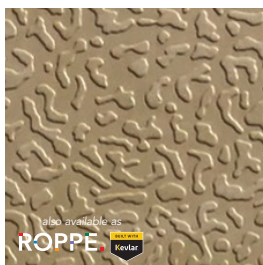
							
100 black	177 steel blue	150 dark gray	193 black brown	123 charcoal	114 lunar dust	129 dolphin	178 pewter
							
194 burnt umber	148 steel gray	175 slate	174 smoke	197 iceberg	110 brown		
							
147 light brown	182 toffee	623 nutmeg	624 chameleon	140 fawn	191 camel	125 fig	171 sandstone
							
130 buckskin	198 ivory	632 flax	184 almond	170 white	131 bisque	127 harvest yellow	631 sahara
							
639 beigewood	640 creekbed	122 natural	195 light gray	663 aged fern	648 pear green	647 spring dill	646 gecko
							
160 forest green	649 sweet basil	169 hunter green	662 envy	118 peacock	187 blue	139 deep navy	627 mariner
							
618 aubergine	665 horizon	664 blue jay	656 bluebell	654 lagoon	638 cadet	637 night mist	655 peaceful blue
							
657 sorbet	658 berry ice	621 merlin	659 grape	186 red	137 cinnabar	188 brick	617 terracotta
							
660 citrus	661 marmalade	643 mimosa	644 sunbeam	642 jonquil	645 blonde	641 moonrise	161 snow

# rubber treads

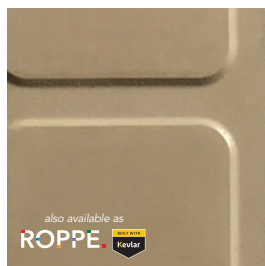
RAISED DESIGN



also available as  
**ROPPE** BUILT WITH Kevlar  
92 low-profile  
36"-72" in 6" increments



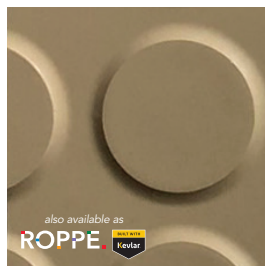
also available as  
**ROPPE** BUILT WITH Kevlar  
93 textured  
36"-108" in 6" increments



also available as  
**ROPPE** BUILT WITH Kevlar  
94 square  
36"-108" in 6" increments



also available as  
**ROPPE** BUILT WITH Kevlar  
95 hammered w/riser  
36"-108" in 6" increments  
99 hammered w/o riser  
36"-108" in 6" increments  
2" tapered nose  
(99 includes adjustable nosing)



also available as  
**ROPPE** BUILT WITH Kevlar  
96 vantage w/riser  
36"-108" in 6" increments  
97 vantage extended depth  
36"-72" in 6" increments  
98 vantage w/o riser  
36"-108" in 6" increments  
(all include relief cut)

## tapered nose

Many Roppe treads have a tapered nose for a clean fit. They help reduce tripping hazards while providing a better finished look.

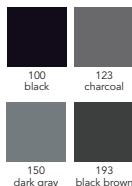


## relief cut

Many of our treads include a molded relief cut that aids in the installation of our treads on today's angled stairs.

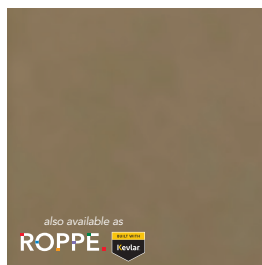


**Roppe Performance Compound Rubber Stair Treads are only available in the solid colors shown.**

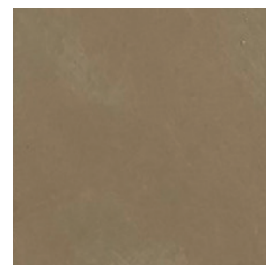


Ideal applications include **automotive** (repair shops, quick lube facilities and automobile storage), **industrial** (manufacturing facilities, refining facilities and material storage) and **transportation** (repair facilities, garages and equipment storage).

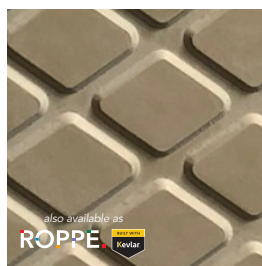
# specialty rubber treads



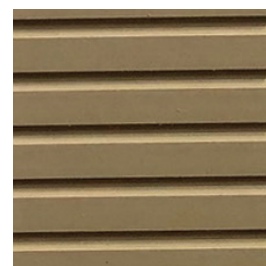
also available as  
**ROPPE** BUILT WITH Kevlar  
60/61 heavy-duty (hd) smooth  
36"-72" in 6" increments



70/71 light-duty (ld) smooth  
36"-72" in 6" increments



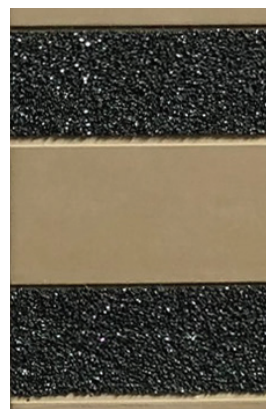
also available as  
**ROPPE** BUILT WITH Kevlar  
30/31 diamond  
30 available in 36"-108" in 6" increments  
31 available in 36"-72" in 6" increments  
(30 includes relief cut)



80/81 rib  
36"-72" in 6" increments



also available as  
**ROPPE** BUILT WITH Kevlar  
40/41 heavy duty (hd) abrasive  
36"-72" in 6" increments



50/51 light duty (ld) abrasive  
36"-72" in 6" increments



Indicates also available as Rubber Treads with DuPont™ Kevlar®. See related brochure for complete details.



#95 Hammered Tread w/  
Riser, Fiesta® F404 Niebla



## rubber treads

### RAISED DESIGN

As easy to install as they are to maintain, our rubber stair treads are available in the same designer colors as Roppe tile and wall base and come in a large selection of finishes, textures and gauges, including our popular Roppe Raised Design profiles.

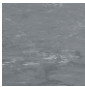
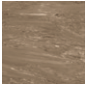



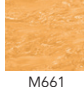


Health Product Declaration® for Rubber Stair Treads is available at [roppe.com](http://roppe.com)

**ROPPE**  
Proven. Flooring. Experiences.

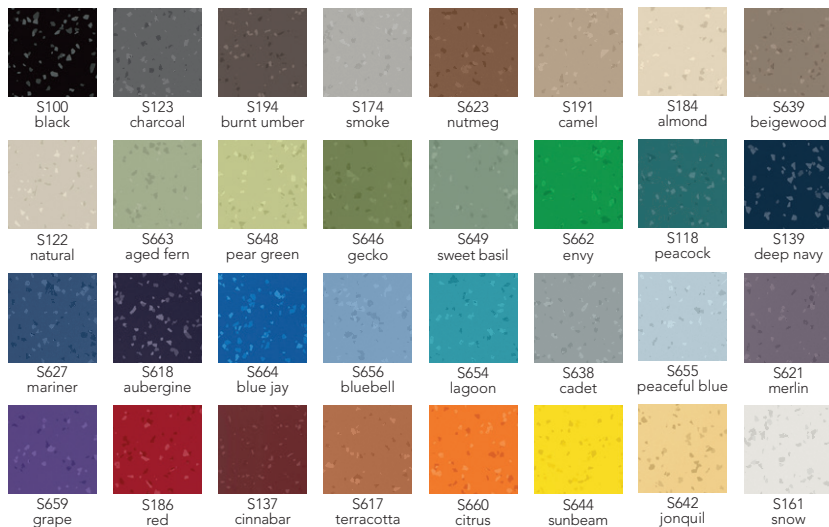
## rubber treads COLORS

### MARBLEIZED COLORS (For all rubber tread profiles.)

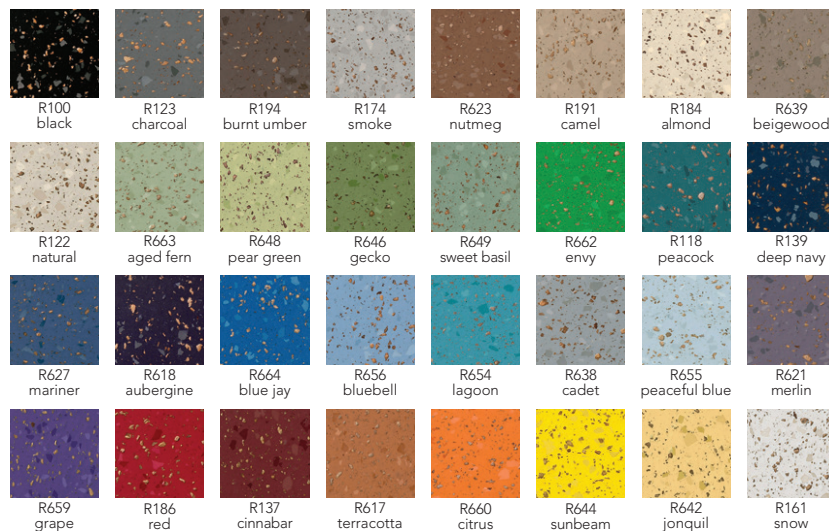
							
M100 black	M177 steel blue	M150 dark gray	M193 black brown	M123 charcoal	M114 lunar dust	M129 dolphin	M178 pewter
							
M194 burnt umber	M148 steel gray	M175 slate	M174 smoke	M197 iceberg	M110 brown		
							
M147 light brown	M182 toffee	M623 nutmeg	M624 chameleon	M140 fawn	M191 camel	M125 fig	M171 sandstone
							
M130 buckskin	M198 ivory	M632 flax	M184 almond	M170 white	M131 bisque	M127 harvest yellow	M631 sahara
							
M639 beigewood	M640 creekbed	M122 natural	M195 light gray	M663 aged fern	M648 pear green	M647 spring dill	M646 gecko
							
M160 forest green	M649 sweet basil	M169 hunter green	M662 envy	M118 peacock	M187 blue	M139 deep navy	M627 mariner
							
M618 aubergine	M665 horizon	M664 blue jay	M656 bluebell	M654 lagoon	M638 cadet	M637 night mist	M655 peaceful purple
							
M657 sorbet	M658 berry ice	M621 merlin	M659 grape	M186 red	M137 cinnabar	M188 brick	M617 terracotta
							
M660 citrus	M661 marmalade	M643 mimosa	M644 sunbeam	M642 jonquil	M645 blonde	M641 moonrise	M161 snow

# rubber treads COLORS

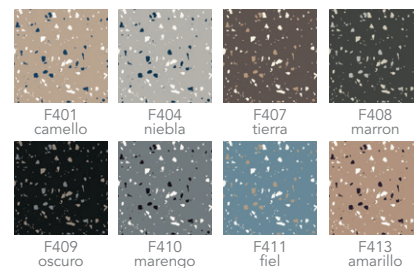
## SYMMETRY COLOR PALETTE (For all rubber tread profiles.)



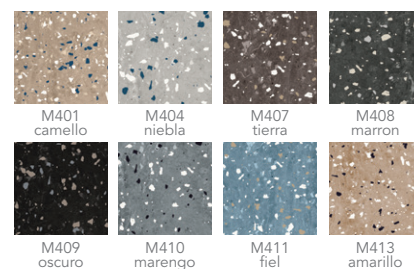
## RENEW COLOR PALETTE (For Smooth, Hammered and Textured rubber tread profiles.)



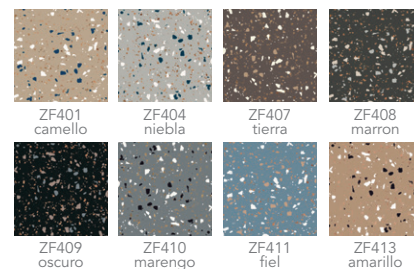
## FIESTA® COLORS (For all rubber tread profiles.)



## MARBLEIZED FIESTA® COLORS (For all rubber tread profiles.)

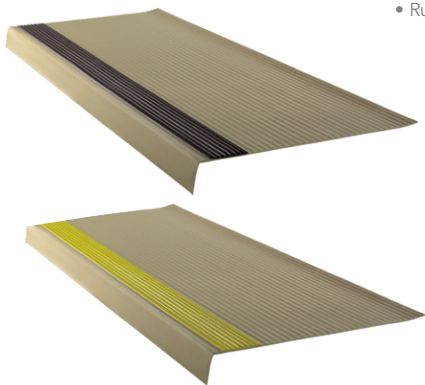


## SAFETCORK® FIESTA® COLORS (For all rubber tile and tread profiles.)



We do our very best to accurately represent the rich color palette of each of our flooring products in both printed and electronic marketing materials. However, it is recommended that a sample be requested for sign-off prior to an order being placed or a specification being written to ensure 100% satisfaction.

## rubber inserts



Rubber inserts are **not available** for the following:

- Rubber treads #40/41, #50/51, #70/71 and #80/81
- Vinyl treads #16/17
- Rubber nosing #01

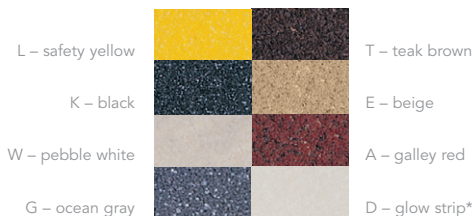


Designed for use in our rubber or vinyl stair tread lines, rubber inserts provide a tactile surface that's durable and easy to clean. The low-profile ribbed surface, or smooth option, are available in 2" strips and offered in colors that coordinate with many of our other product lines.

## for visually impaired

rubber and vinyl treads for the visually impaired

Designed to improve safety for the visually impaired, Roppe stair treads are available with grit strips and in contrasting colors. In addition, rubber detectable warning tiles help signal changes in elevation. Available in 3/4" or 2" width.



**\*Glow Strips are not available for the following:**

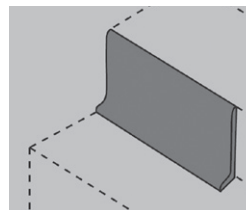
- Rubber treads #40/41, #50/51, #70/71 and #80/81
- Vinyl treads #16/17
- Rubber nosing #01



#98 Vantage Raised Design  
Rubber Tread, 194 Burnt Umber;  
Safety Yellow Abrasive Strip;  
Rubber Riser, 194 Burnt Umber

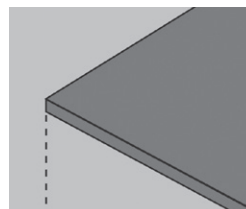
## tread accessories

### rubber and vinyl risers



Risers cover the rear edge of tread to eliminate labor-intensive hand trimming. They are sized to fit most stair risers, but can be trimmed to fit any height (7" or less) or length. Risers are available in 7" x 50' vinyl coils and 7" x coordinating rubber tread length pieces. All risers are .100" thick. Coordinating colors for each tread line are available at a Single Price Point.

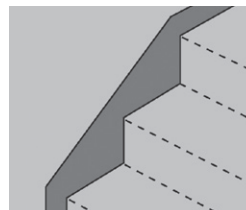
### rubber landing mats/tiles



smooth  
and diamond  
landing mats

Note: Rubber warning tiles can be used to alert the visually impaired to approaching stairways. Size: 1/8" gauge, 12" x 12" tiles. In addition, all Roppe 50cm tiles can be used on landings. Diamond and Smooth landing mats are available in 27" x 27", plus 36" x 36" in Smooth.

### rubber and vinyl stringers



Stringers are available in 10" x 50' vinyl and 10" x 72" or 12" x 72" rubber, and in all of the colors in coordinating tread lines at a Single Price Point. Stringers are .080" thick.



# vinyl treads



16/17 light duty (ld) rib  
42", 48" and 72";  
abrasive strips only



18/19 heavy duty (hd) rib  
42", 48" and 72";  
abrasive strips or  
ribbed/smooth inserts

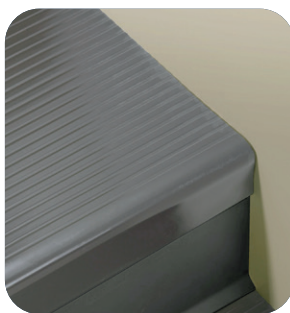
#18 Heavy-Duty Vinyl Tread,  
Vinyl Riser, 107 Light Khaki



## vinyl STAIR TREADS

Our vinyl stair tread designs combine the best of two worlds – affordability and durability – without sacrificing the good looks and quality you've come to expect from Roppe products. With many colors and designer styles to pick from, you'll find the perfect complement for your stair tread project.

			
100 black	107 light khaki	117 saddle brown	132 granite
			
147 light brown	168 deep water	171 sandstone	172 champagne
			
175 slate	177 steel blue	178 pewter	182 toffee
			
184 almond	187 blue	195 light gray	



#17 Light-Duty Vinyl Tread,  
Vinyl Riser, 177 Steel Blue

**ROPPE**  
Proven. Flooring. Experiences.

# rubber treads

RAISED DESIGN | SPECIALTY

## Q6 quicksix



- Free of Red List chemicals, PVC, phthalates and halogens. The ReNew palette is also cork-infused and contains 13% bio-based content from rapidly renewable resources.
- Made in the U.S.A. and meets GREENGUARD GOLD, FloorScore®, NSF332 Platinum and CHPS criteria.
- Available in 9 Profiles: Textured, Raised Circular Vantage, Raised Square, Low Profile Raised Circular, Abrasive Strip, Rib, Smooth, Diamond and Hammered design profiles. Note: Custom lengths can be ordered in 6" increments up to 9 ft. (2.73m) in Textured, Hammered, Vantage, Square and Diamond designs.
- Safety abrasive strips standard on some product lines. Ribbed rubber inserts and custom strips also can be added for extra traction or to aid the visually impaired. Available with self-illuminating photo-luminescent abrasive glow strips for added safety in darkened conditions.
- Treads fully conform with ASTM F2169, Type TS and can include an added performance compound for Oil/Grease Resistance.
- All colors available at a Single Price Point within your selected palette. ReNew palette is available in Smooth, Hammered and Textured profiles only.



# vinyl treads

## Q6 quicksix



- Compound contains bio-based phthalate-free, from a rapidly renewable resource, and 4-6% pre-consumer waste. Made in the U.S.A. and meets FloorScore®, NSF332 Platinum and CHPS criteria.
- Available in two styles and 42", 48" and 72" lengths. Special lengths are available up to 12'. Non-standard length treads are available with a 50-piece minimum order.
- Coordinating risers and stringers available.
- Abrasive strips can be added to all styles (Glow Strips are not available for #16/17). Ribbed or smooth rubber inserts can be added to #18/19 (not available for #16/17).
- Color line is consistent with the Ready Base line of wall base that can be specified on budget-conscious jobs.
- Dedicated color line of 15 colors that are inherent throughout thickness of the tread and available at a Single Price Point.



**excelsior**  
INSTALLATION PRODUCTS

**Recommended  
Adhesives**



AW-510 Acrylic  
Wet Set Adhesive



PS-525 Modified Pressure  
Sensitive Adhesive



TP-620 Pressure  
Sensitive Tape Adhesive



C-631 Water-Based  
Contact Adhesive



U-705 Urethane  
Wet-Set Adhesive



EW-710 Epoxy  
Modified Urethane  
Adhesive



EN-610 Epoxy  
Nose Filler



**excelsior**  
MAINTENANCE PRODUCTS

**Maintenance**

Roppe products are easy to maintain using our new Excelsior™ Maintenance Products. Visit [roppe.com](http://roppe.com) for available options for cleaning and finishing.

**ROPPE.**  
Proven. Flooring. Experiences.

1.800.537.9527 | [www.roppe.com](http://www.roppe.com)



**Sustainable  
Minds**

**ROPPE.**  
UNIVERSITY



proudly made in the  
**USA**

78-671 6/22