



**A GREAT
VALUE**



YOU CAN TRUST THE ENERGY SAVINGS AND QUALITY OF SILVER LINE® WINDOWS & DOORS



**LONG-LASTING
RELIABILITY**

Silver Line by Andersen is your partner for today and tomorrow. We are proud to be a part of the Andersen family with a long history of standing behind our products and our customers. Silver Line® windows and doors are designed with quality materials and are engineered to last for the life of your home,[†] so you can trust you're getting a great value.

ENERGY EFFICIENCY



Save money by saving energy

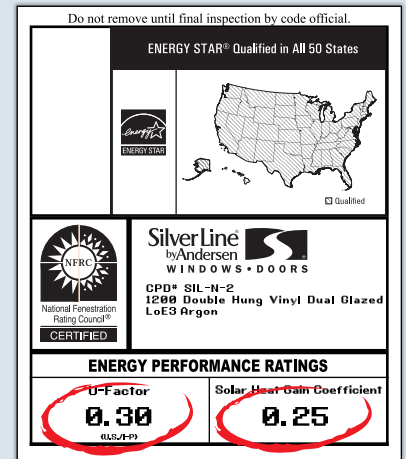
The ENERGY STAR® mark means a product is energy efficient, but did you know that ENERGY STAR qualified windows and doors can reduce energy bills up to 15% while helping protect the environment?††

It pays to understand performance

When shopping for windows and doors, look for products that have a performance label including ENERGY STAR ratings. This gives you accurate, third-party certified information, including:

U-Factor: The lower the U-Factor, the lower your heating bills.

SHGC: The lower the SHGC, the lower your cooling costs.



QUALITY

Easy operation for years to come

Silver Line products are rigorously tested to deliver years of smooth, reliable operation.†

Low-maintenance

Our windows and doors are constructed with heavy duty, low-maintenance vinyl that has color consistent throughout, making scratches virtually invisible and eliminating the need for painting.

Time-honored reliability

For more than 60 years Silver Line has been making quality windows and doors you can rely on.



Our commitment to customer satisfaction

We stand behind our products† and beside our customers. Our network of dedicated professionals is just a phone call away if you need us.

Peace of mind

These Silver Line® windows and patio doors are backed by our Limited Lifetime Warranty. We make sure that our products provide a lifetime of energy efficient, reliable performance.†

VALUE



†† Source: www.energystar.gov

The Silver Line difference

Silver Line windows and patio doors are designed to provide uncompromising value. They achieve the ideal balance of style, performance and price, making them a preferred choice of building professionals and homeowners alike. Our ability to offer an extensive selection of high performance, low-maintenance windows and doors at incredibly affordable prices makes choosing products from Silver Line the clear choice.

The perfect fit

Silver Line windows and doors are available in a wide range of custom sizes so you're ordering what you need to fit your space. There's no added expense for reframing your openings. You're getting the perfect fit every time.

What you need

We offer an array of options for our windows and doors that lets you choose what you want so you are always getting exactly what you need at the price that fits your budget.

STANDARD



DOUBLE-HUNG WINDOW

The Silver Line® 1200 Series double-hung window provides simple aesthetic appeal and energy efficiency in a modestly-priced window. Several standard features and options let you create a window that will not only fit your design needs, but your budget as well.



Features & Benefits

- Simple, beveled design matches any décor
- Tilt-in top and bottom sash for easy cleaning
- Fusion-welded vinyl offers low-maintenance convenience
- Interlocking sash offer an effective seal against drafts
- Vent latches allow for easy ventilation while keeping your windows secure
- ENERGY STAR® qualified with the appropriate energy efficient options
- Limited lifetime warranty ensures your windows will perform for as long as you own your home†

SINGLE-HUNG WINDOW

The budget-conscious Silver Line® 2000 Series single-hung window offers a simple, flat design to fit many styles. Popular features along with a moderate price make this window an attractive value.

Features & Benefits

- Simple, flat design blends with any décor
- Tilt-in bottom sash for easier cleaning
- Fusion-welded vinyl offers low-maintenance convenience
- Interlocking sash offer an effective seal against drafts
- ENERGY STAR® qualified with the appropriate energy efficient options
- Limited lifetime warranty ensures your windows will perform for as long as you own your home†



SLIDING WINDOW

The Silver Line® 2090 Series sliding window is a sleek choice that will blend with your home's style. Its simple but energy efficient construction and clean lines provide a balance of form and function while fitting your budget.

Features & Benefits

- Simple, flat design blends with any décor
- Durable rollers and a smooth rolling track make opening these windows easy
- Fusion-welded vinyl offers low-maintenance convenience
- Interlocking sash offer an effective seal against drafts
- ENERGY STAR® qualified with the appropriate energy efficient options
- Limited lifetime warranty ensures your windows will perform for as long as you own your home†



STANDARD

SLIDING PATIO DOOR

The Silver Line® 5500 Series sliding patio door is available in several standard sizes and with popular options, allowing you to create a door to fit your needs and your budget.

Features & Benefits

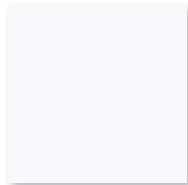
- Simple, flat design blends with any décor
- Fusion-welded vinyl panels offer low-maintenance convenience
- Fully assembled for faster installation or available as separate parts for easier transportation
- Interlocking panels offer an effective seal against drafts
- ENERGY STAR® qualified with the appropriate energy efficient options
- Limited lifetime warranty ensures your doors will perform for as long as you own your home.†



CHOOSE THE FEATURES & OPTIONS THAT ARE RIGHT FOR YOU.

COLOR

These Silver Line® windows and doors are available in white and beige. The color is consistent throughout the frame and sash, making scratches virtually invisible.



White



Beige

HARDWARE

All of our durable hardware is designed to attractively coordinate with the window or door and to provide smooth, easy operation. We offer low profile locks and handles to secure our windows and doors so you can feel safe while enjoying a clear view of the outdoors.

CAM LOCK

Our color coordinated cam lock is designed to bring the window sash closer together for a snug and secure hold.



White | Beige

PATIO DOOR HANDLE

The Silver Line 5500 Series Standard patio door comes with color coordinated lever locking handles.



White | Beige

GLASS OPTIONS

These Silver Line® windows and doors are available with energy efficient, dual-pane glass options to achieve the level of comfort and energy savings you are looking for.

LOE2 GLASS

Designed to efficiently and transparently reflect heat, this glass helps keep your home warmer in the winter and cooler in the summer. This can help reduce your energy bills while still ensuring exceptional clarity.

LOE3 GLASS

This highly efficient glass helps reflect even more heat, resulting in increased comfort and energy savings year-round.

ARGON GAS FILL

An odorless, non-toxic gas that helps reduce heat loss, helping to save on heating costs.

TEMPERED GLASS

Heat treated glass that shatters into pebble-sized pieces instead of larger shards to reduce the risk of injury.

OBSCURE GLASS

Textured glass that provides a translucent effect for added privacy.

TINTED GLASS

A slight shading of color (gray, green or bronze) helps control intense sunlight and helps reduce the sun's heat.

CLEAR GLASS

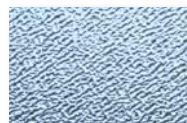
Dual-pane insulated glass is nearly twice as energy efficient as single pane glass.



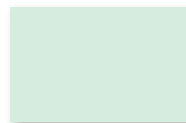
Tempered Glass



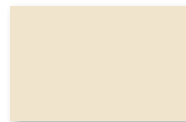
Gray Tint



Obscure Glass



Green Tint



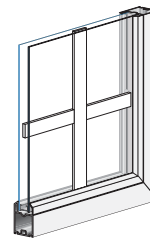
Bronze Tint

GRILLES

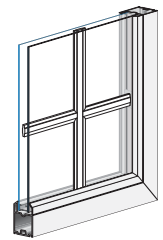
Grilles are available in several different types and patterns that can add style to any home.

GRILLES-BETWEEN-THE-GLASS

Our grilles-between-the-glass options are specially designed to enhance your home's décor and make cleaning your windows and doors a breeze.



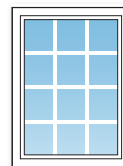
Flat



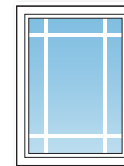
Contour

GRILLE PATTERNS

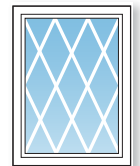
Our windows and doors are available with a wide variety of grille patterns. Choose from standard patterns such as Colonial, Prairie or Diamond as well as a number of specialty patterns.



Colonial



Prairie



Diamond

FEATURES

TILT-IN SASH

Tilt-in sash offer easy cleaning from inside your home. Simply slide the tilt latch open and tilt the sash in to easily clean the outside of your window sash. Once you're finished cleaning, just tilt the sash back into place.





IMPROVING THE VIEW OUTSIDE

Respect for the environment is nothing new at Silver Line

At Silver Line, we hold a commitment to conserve natural resources wherever we can; from designing and testing new products that will deliver greater energy savings for our customers, to more energy efficient delivery methods, even to printing our brochures. We understand the importance of creating healthier and more energy efficient homes.



The U.S. EPA and the DOE have given Andersen Corporation and its family of brands, including Silver Line, the 2012 Sustained Excellence Award. The ENERGY STAR® Sustained Excellence Awards are given only to organizations that have been named ENERGY STAR Partner of the Year for three or more consecutive years. This honor recognizes our continuing commitment to providing energy efficient products. It's a natural extension of our commitment to be the best value for our customers, and we are proud to be recognized again by ENERGY STAR.



Silver Line's vinyl windows and patio doors have been Green Approved by the NAHB Research Center. Using the best existing standards for green and sustainable residential products, Silver Line achieved this approval by providing independent third-party results that our vinyl windows and patio doors perform to the green practice criteria in the National Green Building Standard. As a result, these products are eligible for points toward National Green Building Certification.



Silver Line products are certified under the National Fenestration Rating Council's voluntary third-party certification program designed to ensure accurate energy performance ratings and labeling.



Silver Line proudly participates in the WDMA Hallmark Certification program, which includes product testing and quality control process audits to verify that our windows and doors are produced in conformance with the industry standards for air and water resistance, and structural performance.



silverlinewindows.com

† See the limited lifetime warranty for details. "ENERGY STAR" is a registered trademark of the U.S. Environmental Protection Agency. "Silver Line" and all other marks where denoted are trademarks of Silver Line Building Products LLC. © 2012 Silver Line Building Products LLC. All rights reserved.