



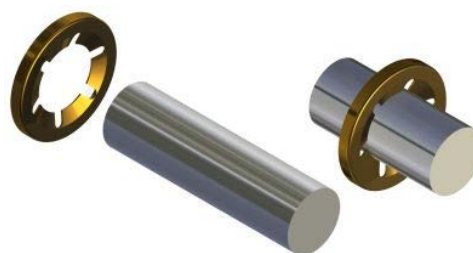
**JET FAST COMPANY., LIMITED.**  
*Jet Fast Co., Ltd. was established in 1979*



Standard Starlocks are available in Spring or Stainless Steel.  
 Non standards may be subject to minimum order quantity.

Spring Steel Finishes: Blue & Varnish (BV) or Mechanical Zinc Plated (DT).

Stainless Steel: Self Colour



## Starlock® Push On Fasteners for Metric Round Shafts

Shaft Size inch	Uncap Part#	No of Legs	Capped Part#	Cap Size	Outer dia inch	Material Thickne ss	Approx push on force kg	Approx pull off force kg	Standard	Box QTY	Pictures
1.5mm	8084	4	7204	1	9.702	0.203	4	20	V	10000	
1.5mm	6499	4			6.400	0.203	10	20		10000	
1.8mm	8054	4			9.702	0.203	4	20		1000	
2mm	6489	4	6662	1	9.702	0.203	7	20	V	10000	
2mm	6933	4			6.400	0.203	20	40		10000	
2mm	8129	4			8.500	0.203	7	20		10000	
2.5mm	7114	4			8.500	0.203	10	40		10000	
2.7mm	8171	4			18.440	0.203	14	30		10000	
3mm	6490	4	6663	1	9.702	0.203	11	20	V	10000	
3mm	8014	4			6.400	0.203	20	40		10000	
3mm	8131	4			11.481	0.203	11	20		10000	
3mm	8066	4			28.150	0.203	10	40		10000	
3mm	7184	4			15.291	0.254	14	40		10000	
3mm	8068	4			18.440	0.203	15	40		10000	



**JET FAST COMPANY., LIMITED.**  
*Jet Fast Co., Ltd. was established in 1979*



Standard Starlocks are available in Spring or Stainless Steel.  
 Non standards may be subject to minimum order quantity.

Spring Steel Finishes: Blue & Varnish (BV) or Mechanical Zinc Plated (DT).

Stainless Steel: Self Colour



## Starlock® Push On Fasteners for Metric Round Shafts

Shaft Size inch	Uncap Part#	No of Legs	Capped Part#	Cap Size	Outer dia inch	Material Thickne ss	Approx push on force kg	Approx pull off force kg	Standard	Box QTY	Pictures
3.5mm	8006	4			9.702	0.203	11	20		10000	
4mm	6492	5	6665	2	11.481	0.203	7	40	v	10000	
4mm	8072	5			25.020	0.254	7	40		1000	
4mm	7187	5			11.481	0.254	10	60		10000	
4mm	8059	5			11.481	0.406	25	125		10000	
4mm	8051	5			15.291	0.254	7	60		5000	
4mm	8064	5			18.440	0.305	10	100		2000	
4.5mm	7080	5			11.481	0.203	7	40		10000	
5mm	6491	6	6664	2	11.481	0.203	12	40	V	10000	
5mm	8153	6			9.702	0.254	30	90		10000	
5mm	7129	6			11.481	0.305	15	80		10000	
5mm	8060	6			11.481	0.406	25	125		10000	
5mm	7077	6			15.291	0.254	12	60		5000	
6mm	6493	6	6666	3	15.291	0.254	15	80	V	5000	



**JET FAST COMPANY., LIMITED.**  
*Jet Fast Co., Ltd. was established in 1979*



Standard Starlocks are available in Spring or Stainless Steel.  
 Non standards may be subject to minimum order quantity.

Spring Steel Finishes: Blue & Varnish (BV) or Mechanical Zinc Plated (DT).  
 Stainless Steel: Self Colour



## Starlock® Push On Fasteners for Metric Round Shafts

Shaft Size inch	Uncap Part#	No of Legs	Capped Part#	Cap Size	Outer dia inch	Material Thickne ss	Approx push on force kg	Approx pull off force kg	Standard	Box QTY	Pictures
6mm	7036	6			15.291	0.355	20	150		5000	
6mm	7126	6			11.481	0.203	12	40		10000	
6mm	8024	6			11.481	0.305	36	180		10000	
6mm	8114	6			11.800	0.203	36	180		10000	
6mm	7073	6			14.500	0.254	15	80		5000	
6mm	8061	6			15.291	0.406	40	180		5000	
6mm	8002	6			18.440	0.305	10	80		5000	
6.75 mm	7030	6			18.440	0.254	10	80		2000	
7mm	6703	6	6670	3	15.291	0.254	19	80	V	5000	
7mm	8149	6			15.291	0.406	40	180		5000	
8mm	6704	6	6671	3	15.291	0.254	22	80	V	5000	
8mm	8062	6			15.291	0.406	40	180		5000	
8mm	7192	6			18.440	0.305	22	100		2000	
8mm	7067	6			25.020	0.305	20	150		1000	



**JET FAST COMPANY., LIMITED.**  
*Jet Fast Co., Ltd. was established in 1979*



Standard Starlocks are available in Spring or Stainless Steel.  
 Non standards may be subject to minimum order quantity.

Spring Steel Finishes: Blue & Varnish (BV) or Mechanical Zinc Plated (DT).  
 Stainless Steel: Self Colour



## Starlock® Push On Fasteners for Metric Round Shafts

Shaft Size inch	Uncap Part#	No of Legs	Capped Part#	Cap Size	Outer dia inch	Material Thickne ss	Approx push on force kg	Approx pull off force kg	Standard	Box QTY	Pictures
8.5mm	7101	6			15.291	0.254	22	80		5000	
9mm	6708	6	6674	4	18.440	0.305	21	100	V	2000	
10mm	6496	6	6668	4	18.440	0.305	29	100	V	2000	
10mm	8130	6			18.420	0.406	100	200		2000	
10mm	7074	6			25.020	0.406	25	250		1000	
11mm	6706	6	6673	4	18.440	0.305	42	100	V	2000	
12mm	6713	6	6675	5	25.020	0.406	45	250	V	1000	
12mm	8179	6			28.245	0.406	35	250		1000	
13mm	6829	6	6885	5	25.020	0.406	35	250	V	1000	
14mm	6825	6	6881	6	28.245	0.406	25	250	V	1000	
14mm	7065	6			23.000	0.406	70	150		1000	
14mm	7078	6			25.020	0.406	40	250		1000	
15mm	6714	6	6676	6	28.245	0.406	34	250	V	1000	
15mm	8166	6			28.245	0.406	10	250		1000	



**JET FAST COMPANY., LIMITED.**  
*Jet Fast Co., Ltd. was established in 1979*


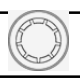


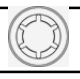



Standard Starlocks are available in Spring or Stainless Steel.  
 Non standards may be subject to minimum order quantity.

Spring Steel Finishes: Blue & Varnish (BV) or Mechanical Zinc Plated (DT).  
 Stainless Steel: Self Colour



## Starlock® Push On Fasteners for Metric Round Shafts

Shaft Size inch	Uncap Part#	No of Legs	Capped Part#	Cap Size	Outer dia inch	Material Thickne ss	Approx push on force kg	Approx pull off force kg	Standard	Box QTY	Pictures
15mm	8193	6			25.020	0.406	60	250		1000	
16mm	6826	6	6882	6	28.150	0.406	56	250	V	1000	
17mm	6715	6	6677	6	28.245	0.406	49	250	V	1000	
18mm	6827	6	6883	7	36.576	0.406	23	350	V	1000	
18mm	8001	6			28.245	0.406	55	350		1000	
18mm	8125	6			31.000	0.315	23	200		10000	
18.4 mm	8110	6			28.140	0.406	55	350		1000	
19mm	6828	9	6884	7	36.576	0.406	16	385	V	1000	
19.85 mm	8069	6			28.150	0.406	70	300		2000	
20mm	6716	9	6678	7	36.576	0.406	27	350	V	1000	
20mm	8057	9			36.576	0.508	27	385		1000	
20mm	8109	9			41.500	0.406	20	350		1000	
20mm	8160	6			28.000	0.508	150	510		3000	
21mm	6830	9	6886	7	36.576	0.406	21	385	V	1000	



**JET FAST COMPANY., LIMITED.**  
*Jet Fast Co., Ltd. was established in 1979*



Standard Starlocks are available in Spring or Stainless Steel.  
 Non standards may be subject to minimum order quantity.

Spring Steel Finishes: Blue & Varnish (BV) or Mechanical Zinc Plated (DT).  
 Stainless Steel: Self Colour



## Starlock® Push On Fasteners for Metric Round Shafts

Shaft Size inch	Uncap Part#	No of Legs	Capped Part#	Cap Size	Outer dia inch	Material Thickne ss	Approx push on force kg	Approx pull off force kg	Standard	Box QTY	Pictures
22mm	6719	9	6889	7	36.576	0.406	55	350	V	1000	
22mm	8161	9			29.800	0.508	190	510		2000	
23mm	6831	9	6887	8	38.176	0.457	71	350	V	1000	
24mm	6832	9	6888	9	41.376	0.508	46	385	V	1000	
24mm	7035	9			38.176	0.457	40	200		1000	
25mm	6717	9	6679	9	41.350	0.508	57	385	V	1000	
25mm	8103	9			38.176	0.305	30	250		1000	
27mm	7194	9			41.376	0.508	80	385		1000	
30mm	8124	9			44.000	0.508	70	300		1000	
30mm	8104	9			50.000	0.508	30	385		1000	

The Starlock® Push On Fastener is a precision pressing used on plain shafts of steel, non ferrous or plastic where a quick, permanent and efficient means of assembly is required.

Starlock® eliminate costly threading and grooving operations, facilitate rapid assembly, and once fixed in position, are so secure that they cannot be removed without destruction.

Supplied in spring steel and stainless steel, Starlock® are manufactured to TS16949 in the United Kingdom by Baker & Finmore Limited (BAK-FIN) located for over 150 years in the heart of England (Birmingham), next to the Jewellery Quarter.

Special parts on application.