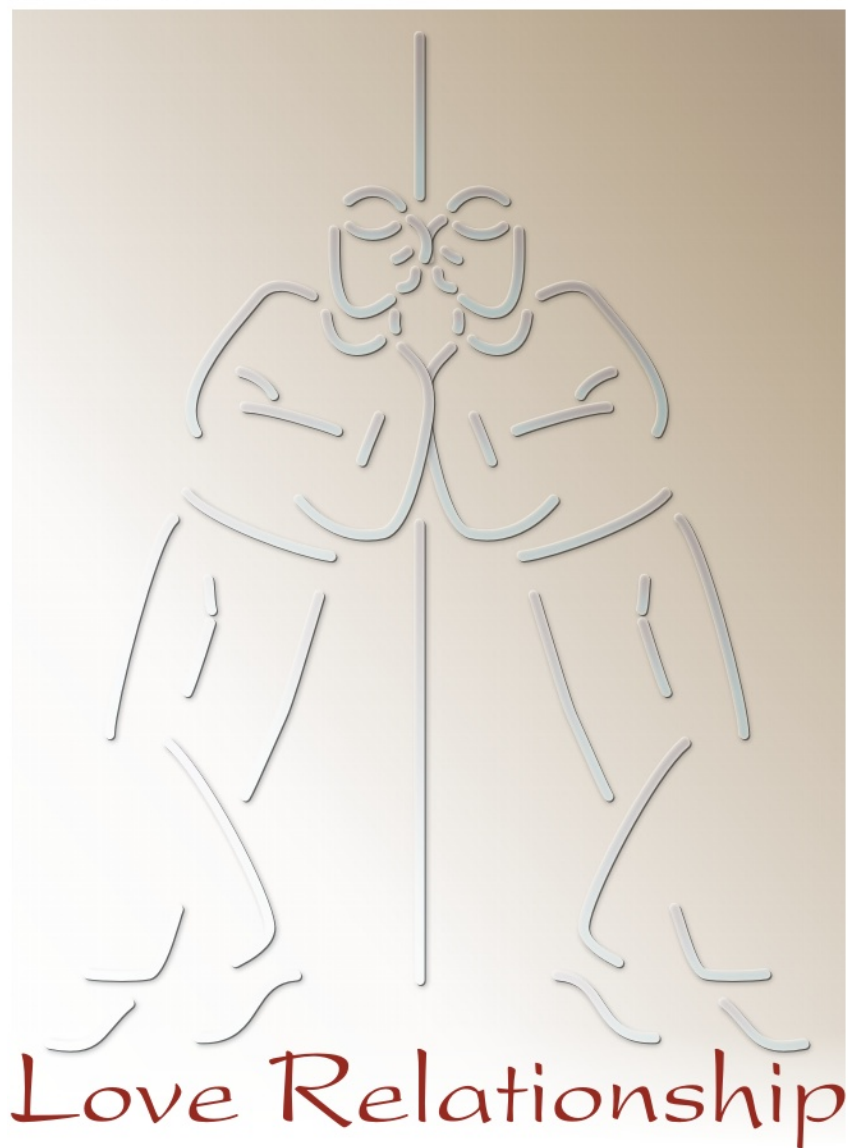


# Star★Types

by Michael Erlewine

C O M P A T I B I L I T Y



StarTypes Compatibility Report for:  
Angelina Jolie and Brad Pitt

---

This reading compliments of:

GoddessFlight.com  
Divine Guidance  
Since 2001

# Welcome



Welcome to StarTypes, your personal astrology report written and illustrated by astrologer/author Michael Erlewine who, with over 40 years of experience in astrology, has written some twenty-some books on astrology and dozens of computer astrological programs. Erlewine writes:

*"I have lectured, taught classes, and done private consultations for more years than I want to think about. What I have found works best is a one-to-one presentation of the astrological chart - your personal astrology. In the StarTypes reports, I have tried to do just that: walk you through what is most important about your astrology chart, step-by-step, just as I would if we sat down together for a chart reading. StarTypes Reports are illustrated and easy to read. After all, they are all about you!"*

# Patterns in the Sky



StarTypes astrology is both ancient and modern. It is ancient, because it uses the traditional natal chart that astrologers have used throughout history. It is modern because it also takes advantage of what astronomers have learned about the heavens and our solar system in these modern times. The result is a unique combination of ancient and modern astrology that provides a unique perspective on your particular birth chart and therefore your life. This is how it works:

StarType analysis plots large-scale planetary patterns as seen from Earth and compares those patterns to corresponding patterns astronomers see functioning throughout our entire solar system. StarTypes charts not only the outer circumstances of your birth (your personality and Karma), but also the internal and spiritual qualities embedded in that same moment, your inner motivation, what has been called your Dharma or Life Path. The result is an enhanced perspective that in effect amounts to a stereo image of your birth moment and chart, looking inside and out.

StarTypes analysis offers a very complete perspective on your birth moment, with insights into what talents you naturally have, how those talents might be used, as well as your relationship role with partners, romantic and otherwise. Check it out. What follows is your own StarType report. I hope you enjoy it.

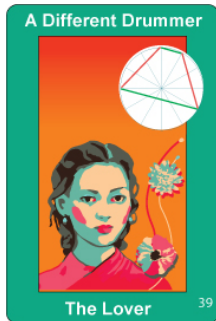
Michael Erlewine, Author of StarTypes



## StarType for Angelina

The heavens above and surrounding us are in constant change as the Sun, Moon, and planets move in their orbits to create vast kaleidoscope-like patterns in the sky, what has been rightly called "The Cosmic Dance." StarType analysis sorts through these many changing patterns and isolates the strongest and most pronounced pattern in effect at the moment of your birth. This cosmic pattern or archetype is your "StarType," and it best represents what is happening in the heavens at the moment of your birth. All in all there are some sixty major StarType patterns that have been recognized, and each represents a particular kind of individual and approach to life.

Your StarType is more than just your personality and the circumstances in which you happen to find yourself in life. It also describes who you are at heart, the real inner you behind all that is going on the outside, plus your possibilities - how you look at and approach life. StarTypes reveal the 'you' as only your closest friends know you, as you know yourself. What follows is a description of our StarType.



### This StarType:

Marching to a different drummer, you've heard the phrase. Well, that fits Angelina and this StarType to a 'tee'. Here we have extra-ordinary intellect, a real talent for sizing up a situation at a glance. There is only one caveat and that is that she always has an alternate view of almost everything, not that this is in any way a defect. She is usually spot on with her observations, but, again, always coming from a new or alternate way of looking at things. Angelina's mind is all encompassing and her opinion is considered essential, albeit unique.



## StarType for Brad

The heavens above and surrounding us are in constant change as the Sun, Moon, and planets move in their orbits to create vast kaleidoscope-like patterns in the sky, what has been rightly called "The Cosmic Dance." StarType analysis sorts through these many changing patterns and isolates the strongest and most pronounced pattern in effect at the moment of your birth. This cosmic pattern or archetype is your "StarType," and it best represents what is happening in the heavens at the moment of your birth. All in all there are some sixty major StarType patterns that have been recognized, and each represents a particular kind of individual and approach to life.

Your StarType is more than just your personality and the circumstances in which you happen to find yourself in life. It also describes who you are at heart, the real inner you behind all that is going on the outside, plus your possibilities - how you look at and approach life. StarTypes reveal the 'you' as only your closest friends know you, as you know yourself. What follows is a description of our StarType.



### This StarType:

Marching to a different drummer, you've heard the phrase. Well, that fits Brad and this StarType to a 'tee'. Here we have extra-ordinary intellect, a real talent for sizing up a situation at a glance. There is only one caveat and that is that he always has an alternate view of almost everything, not that this is in any way a defect. He is usually spot on with his observations, but, again, always coming from a new or alternate way of looking at things.

Brad's mind is all encompassing and his opinion is considered essential, albeit unique.

# Approach to Relationships



## Approach to Relationships - Angelina



When it comes to relationships, Angelina needs them, which suggests that a partner will be pretty much always present, and mostly with the RED StarTypes, those who are more touchy-feely and practical than herself. These types will not cease to provide her with a steady stream of real experience, so that she can at least know what she talks about so well. They cause her to ground her thoughts and observation in experience and fact, and to work out thoughts on the practical plane.

# Approach to Relationships



## Approach to Relationships - Brad



When it comes to relationships, Brad needs them, which suggests that a partner will be pretty much always present, and mostly with the RED StarTypes, those who are more touchy-feely and practical than himself. These types will not cease to provide him with a steady stream of real experience, so that he can at least know what he talks about so well. They cause him to ground his thoughts and observation in experience and fact, and to work out thoughts on the practical plane.





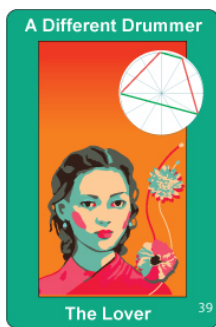
## Things Are Not Always What They Seem - Angelina

---

Things are not always what they seem, especially when meeting someone for the first time. How to those around you see you? Are you a "What You See Is What You Get" type or are you a "What You See is Not What You Get" type. Are you different once folks get to know you? StarTypes has way of measuring the difference.

On the following page is a comparison of the traditional astrology chart of the outer appearances of this individual (personality), the way this person comes across AND the chart of their inner Self (Dharma chart), the individual as they are when you come to know them better. This will give you an idea if what you see is in fact what you get.

### Your Inner and Outer StarTypes



Inner StarType



Outer StarType

Above find your inner and outer StarType cards. Perhaps the more important of the two is the inner StarType, the one on the left. This is what is called your Dharma of Life-Path Chart. It is who you are inside, as people get to know you. This is your heart essence, how you function in this world.

On the right is the chart of how you appear to others, your personality, the way you come across upon first contact - the initial impression. These two cards can be similar in type and function or very different. If the border color of the cards is the same (green, red, blue, or rose), then you are more-or-less how you appear, that is: what you see is what you get. If they are different, colors, then you may be quite different on first impression than you are when people get to know you. In that case, what you see is not what you get.





## StarType Appearances

You Are NOT What You Appear To Be

On the surface Angelina appears Independent, sometimes a little distant. Quite practical, with some vision, and able to manage most things. Balanced.

.

Appearances aside, Angelina in fact is Very idea oriented, at home in the mind, perhaps a little shy or awkward socially, but a strong idea person, skilled with words, and able to grasp patterns and concepts with easy. Not too social, but very caring for others, and compassionate..



## Things Are Not Always What They Seem - Brad

---

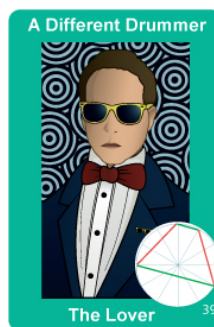
Things are not always what they seem, especially when meeting someone for the first time. How to those around you see you? Are you a "What You See Is What You Get" type or are you a "What You See is Not What You Get" type. Are you different once folks get to know you? StarTypes has way of measuring the difference.

On the following page is a comparison of the traditional astrology chart of the outer appearances of this individual (personality), the way this person comes across AND the chart of their inner Self (Dharma chart), the individual as they are when you come to know them better. This will give you an idea if what you see is in fact what you get.

### Your Inner and Outer StarTypes



Inner StarType



Outer StarType

Above find your inner and outer StarType cards. Perhaps the more important of the two is the inner StarType, the one on the left. This is what is called your Dharma of Life-Path Chart. It is who you are inside, as people get to know you. This is your heart essence, how you function in this world.

On the right is the chart of how you appear to others, your personality, the way you come across upon first contact - the initial impression. These two cards can be similar in type and function or very different. If the border color of the cards is the same (green, red, blue, or rose), then you are more-or-less how you appear, that is: what you see is what you get. If they are different, colors, then you may be quite different on first impression than you are when people get to know you. In that case, what you see is not what you get.



## StarType Appearances

### You Are What You Appear To Be

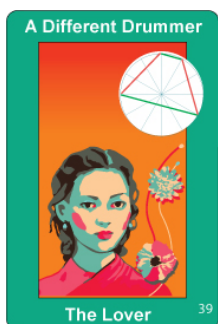
There is no difference between how this person appears and how they are when you get to know them. What you see is what you get. Brad is Very idea oriented, at home in the mind, perhaps a little shy or awkward socially, but a strong idea person, skilled with words, and able to grasp patterns and concepts with ease. Not too social, but very caring for others, and compassionate.

# Star★Types Relationships

The table on this page represents the essential StarType elements for each partner, and not just the key StarType for each. These main elements are marked with a checkmark along the left and right sides of the table, along with how many times they occur, their StarType number, and a percentage indication as to how strong the element is (100% is the strongest possible). The four basic relationship types are color-coded from top to bottom, with green for the ☐ Lover ☐ StarType, red for the ☐ Loved One ☐ StarType, blue for the ☐ Independent ☐ StarType, pink for the ☐ Multi-relational ☐ StarType, and yellow for other types.

The purpose of the table is to let you see at a glance the various components of the relationship and their strengths.

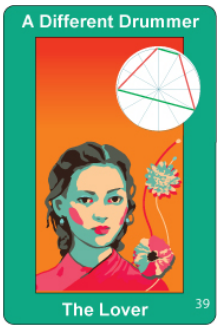
## Angelina



Occ.	ST#	%	Description	%	ST#	Occ.
			Compassionate, Big Picture, Lover			
			Proactive, Entrepreneurial			
✓ 1	#39	24%	Alternate View	72%	#42	1 ✓
			Psychological, Mental, Complex			
✓ 2	#50	01%	Caring, Mental Work	01%	#50	2 ✓
			Little Obsessive, Recursive Mind			
			Seminal, Deep			
			Attractive, Gregarious, People Loving			
			Busy Achiever, Doing, Doing	14%	#31	2 ✓
			Very Independent, Self-sufficient			
			Creative: Acts, then Thinks			
			Conceptual: Thinks, Then Does			
			Very Active Psychological, Mystic			
			Psychological, Spiritual Doer			
			Laser Mind, Can Think and Do			
✓ 2	#6	50%	Enjoys Many Contacts, Many Places	84%	#6	1 ✓
			Reactive, Responds to Anything			
			Yearning, Waiting, Wishing	15%	#23	1 ✓
✓ 1	#44	70%	Extra Creativity	01%	#45	1 ✓
			Synchronicity, Coincidence			
			Completion	50%	#51	1 ✓

## Brad





For Angelina

Marching to a different drummer, you've heard the phrase. Well, that fits Angelina and this StarType to a 'tee'. Here we have extra-ordinary intellect, a real talent for sizing up a situation at a glance. There is only one caveat and that is that she always has an alternate view of almost everything, not that this is in any way a defect. She is usually spot on with her observations, but, again, always coming from a new or alternate way of looking at things. Angelina's mind is all encompassing and her opinion is considered essential, albeit unique. When it comes to relationships, Angelina needs them, which suggests that a partner will be pretty much always present, and mostly with the RED StarTypes, those who are more touchy-feely and practical than herself. These types will not cease to provide her with a steady stream of real experience, so that she can at least know what she talks about so well. They cause her to ground her thoughts and observation in experience and fact, and to work out thoughts on the practical plane. Angelina has a natural inner sense of vision, real insight, but a vision that walks just outside what we could agree is typical. In other words, she brings to each situation a solution (you get the big picture), but always from an angle that is a little different. In general, she benefits from relationships with the RED LINE StarTypes, which serve to pull her ever more into the practical, causing her to enjoy herself, and to feel of life, deeply. This experience of relationship and getting more in-touch, best brings out her unique vision. Angelina gets grounded by this kind of relation. Mixing with the 'Big Picture' GREEN StarTypes, like StarTypes #60 and #5 should prove interesting, since they will always differ with Angelina enough to show off her very different view of things. KEYWORDS

- Alternative Viewpoint.
- Mental.
- Psychological.



## For Brad

Marching to a different drummer, you've heard the phrase. Well, that fits Brad and this StarType to a 'tee'. Here we have extra-ordinary intellect, a real talent for sizing up a situation at a glance. There is only one caveat and that is that he always has an alternate view of almost everything, not that this is in any way a defect. He is usually spot on with his observations, but, again, always coming from a new or alternate way of looking at things. Brad's mind is all encompassing and his opinion is considered essential, albeit unique. When it comes to relationships, Brad needs them, which suggests that a partner will be pretty much always present, and mostly with the RED StarTypes, those who are more touchy-feely and practical than himself. These types will not cease to provide him with a steady stream of real experience, so that he can at least know what he talks about so well. They cause him to ground his thoughts and observation in experience and fact, and to work out thoughts on the practical plane. A StarType very thirsty for relationships, most important being to seek out any of the red-bordered cards, which will help to ground and make you more practical. On the other hand, the green-bordered cards with the large green triangles in them, like StarTypes #60, #5, #18, and so on will bring good advice and guidance. You can enjoy both types of relationships. As for the blue-bordered cards, not shown here, keep in mind that they have the qualities of both the red-bordered and the green-bordered cards within their makeup. When relating to them, Brad will want to invoke the attention-demanding part of them, having them take on the role of the loved one - someone for him to look after.

- Alternative Viewpoint.
- Conceptual.
- Psychological.
- Introspective.

# Relationship List



## Relationships - Angelina

**Relationships:**

Angelina needs relationships.

**Romantic Role:**

Angelina likes to take on the role of "lover" or caretaker in a relationship.

**Office Role:**

In an office environment, Angelina prefers the role of supervisor or manager of some kind.

**Independent:**

No.

**Interdependent:**

Yes.

**Needy:**

Yes, in relationships.



# Relationship List



## Relationships - Brad



### **Relationships:**

Brad needs relationships.

### **Romantic Role:**

Brad likes to take on the role of "lover" or caretaker in a relationship.

### **Office Role:**

In an office environment, Brad prefers the role of supervisor or manager of some kind.

### **Independent:**

No.

### **Interdependent:**

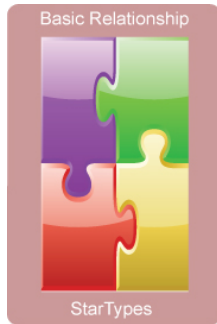
Yes.

### **Needy:**

Yes, in relationships.

# Basic Compatibility

Naturally compassionate ■ Lack of enthusiasm  
Aware of others ■ High energy  
Generally kind ■ Ambitious  
Solid management talent ■ Driven to succeed  
Not a touchy-feely type of person ■ Grasp concepts  
A bit of a dreamer ■ Pick out patterns  
Thinks outside the box ■ Persistent drive  
High energy ■ A bit of a dreamer  
Runs to matters of the mind ■ The Entrepreneur  
Is not much fun ■ Thoughtful, careful, and meticulous  
Abstract ■ Not a people person  
Meticulous ■ Enthusiasm others  
Too much theory ■ Runs cool, not warm  
Appreciative in social situations ■ A good group leader  
A good listener ■ A good advisor or consultant



Angelina: StarType #39, "A Different Drummer"

Brad: StarType #42, "A Different View"

Talk about a war of the words, here are two very cerebral, highly conceptual souls, each of whom takes to the care-giving role of the lover. Probably not a romantic relationship, unless there is some shared goal or work to be done. Two visionaries, and not of the same variety. Brad has a very powerful mind, as does Angelina, but always from a unique and different perspective. Mix these two together and they should have some brilliant conversation, if nothing else.

# Lovers Comparison



Talk about "heady," this partnership is all about ideas, concepts, words, and probably lots of talk - great discussions and original arguments. What may be missing is the real substance and practical dimension, where the rubber meets the road. It is too easy here for Angelina and Brad to be all talk and not enough action, if you understand me.

Both will want to be the boss, to head up the relationship and act as the lover, but it takes someone to love to make this work and if neither Angelina or Brad is willing or able to do this, then the partnership lacks an object, the loved one, and that never works out.

So good and occasional friends may be the limit here, unless for some reason both partners can put aside their intellectual and critical sides to concentrate on a goal greater than themselves, something beyond them like a public cause, a hobby, or perhaps a child. Then it can work.

# The Inner Relationships



Mental to mental is what these two are all about, and really bright at that. Both Angelina and Brad are sharp as sharp can be, when it comes to analyzing a situation, taking it all in and coming up with what is called the 'big picture.' They get it, and there solutions to problems are always right on, but perhaps a wee bit unusual. They have a non-conformist perspective on life.

Another aspect they share is a basic insecurity that probably manifests as a certain shyness, especially in social situations, like groups, parties, wherever more than a few are present. In these situations, but Angelina and Brad tend to gravitate to the edge of things where they watch and kibitz verbally. Yes, verbally these two are killers and their tongues and critical grasp is not something you want to have turned on you.

So, these two are natural friends and communication is never a problem. Where problems can and may arise is in practical matters, what used to be called 'common sense'. Neither of them have any or at least not much, and for all of there mental reasoning, they can be almost foolish when it comes to the business end of life.

# Profile Summary



## Profile Summary for Angelina



Angelina has great conceptual abilities, grasps things with her mind with ease, and can pick out the patterns right off. This talent for grasping abstract concepts makes her perfect for management that involves planning, in particular going forward. Angelina is naturally forward looking, eager and interested in the future, perhaps even somewhat of a visionary. She is compassionate, aware of others, and is generally kind. There is one other point.

Angelina's rather brilliant ideas always seem to come from a non-standard perspective. Her rather original point of view is always spot-on, but there is almost always something of a twist to where she is coming from, a different perspective. Angelina marches to a different drummer.

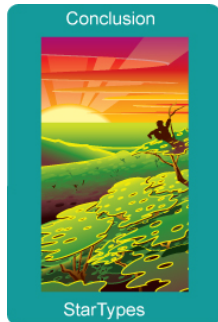
## Profile Summary for Brad



Brad has great conceptual abilities, grasps things with his mind with ease, and can pick out the patterns right off. This talent for grasping abstract concepts makes him perfect for management that involves planning, in particular going forward. Brad is naturally forward looking, eager and interested in the future, perhaps even somewhat of a visionary. He is compassionate, aware of others, and is generally kind. There is one other point.

Brad's rather brilliant ideas always seem to come from a non-standard perspective. His rather original point of view is always spot-on, but there is almost always something of a twist to where he is coming from, a different perspective. Brad marches to a different drummer.

# Conclusion



This concludes your StarType Compatibility Report. In this report we have tried to point out not only the individual characteristics of each partner and how they might approach relationships, but also how the two partners may interface and get along. StarTypes compatibility represents the potential for the relationship and the relationship roles each of the partners naturally find comfortable. We hope you have enjoyed it.