

District of Columbia

# STATE DATA CENTER SPECIAL REPORT



By  
Joy Phillips

These indicators were derived from data produced by the U.S. Census Bureau and may differ from data produced by other entities.

## Tutorial for Accessing Census Data using the US Census Bureau’s American FactFinder

The purpose of this tutorial is to provide users with an easy-to-follow visual guide to accessing Census data through the American FactFinder website. There are many ways to access data through the Census website, including apps for mobile devices, special summary reports and infographics, and links to the many Census data products. The American FactFinder, however, offers the most direct access to the full set of data available from the US Census Bureau. This tutorial will demonstrate the use of the “Advanced Search” feature and will allow the user to gain valuable practice using the American FactFinder system. All examples will display tables relevant to the District of Columbia, however, the tutorial will explain the basic process of using the system, so it will be equally useful for users interested in data for other states. Each page in this tutorial includes a visual sample, detailed instructions, as well as blank space for the user to take notes. The Census Bureau is constantly updating their website, so there may be minor differences between the graphic representations in this tutorial and the actual website.

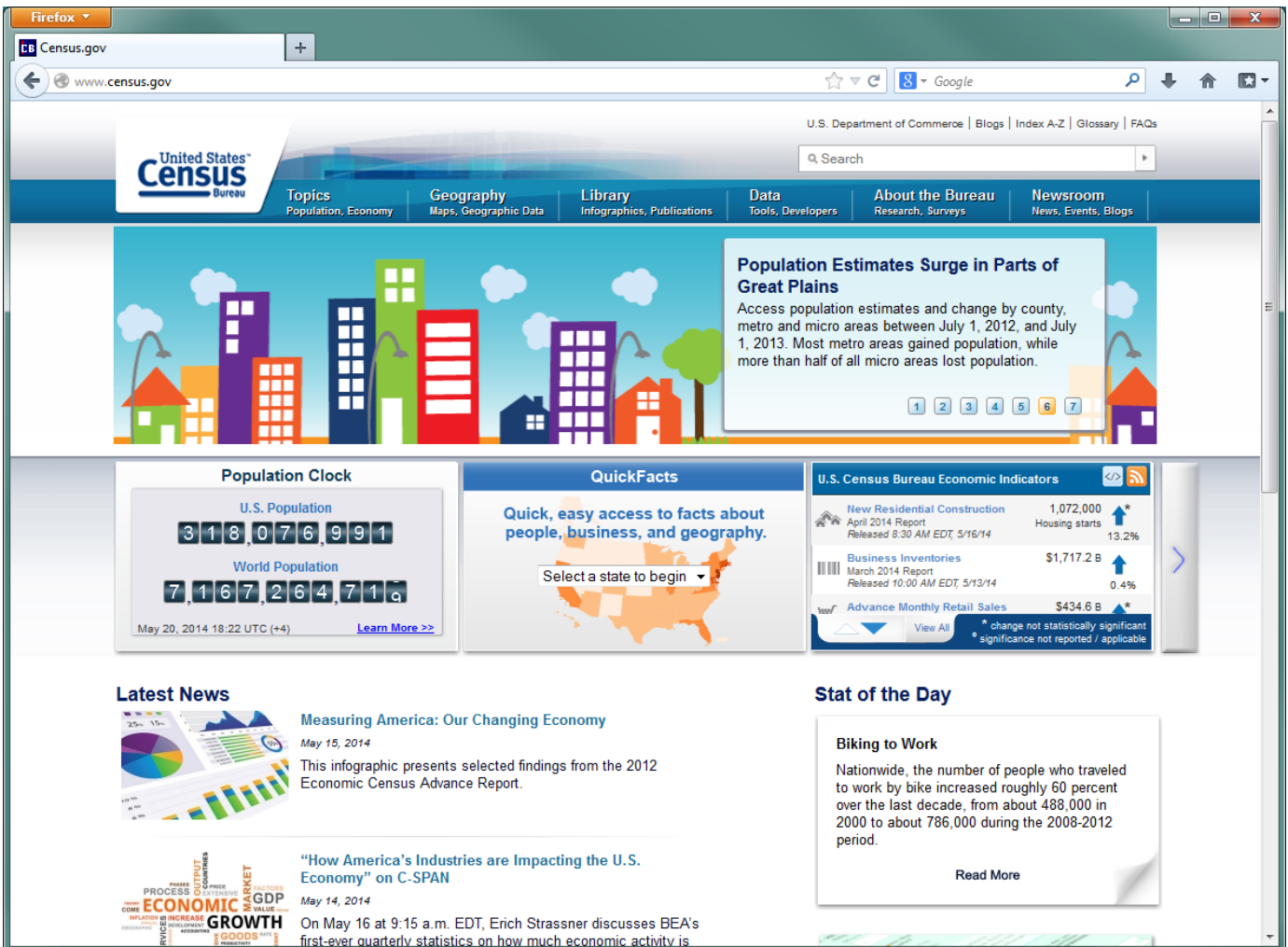


Figure 1: This is the US Census Bureau website Home Page, found at [www.census.gov](http://www.census.gov) The American FactFinder can be found under the “Data” Link at the top of the page as shown in the next picture.





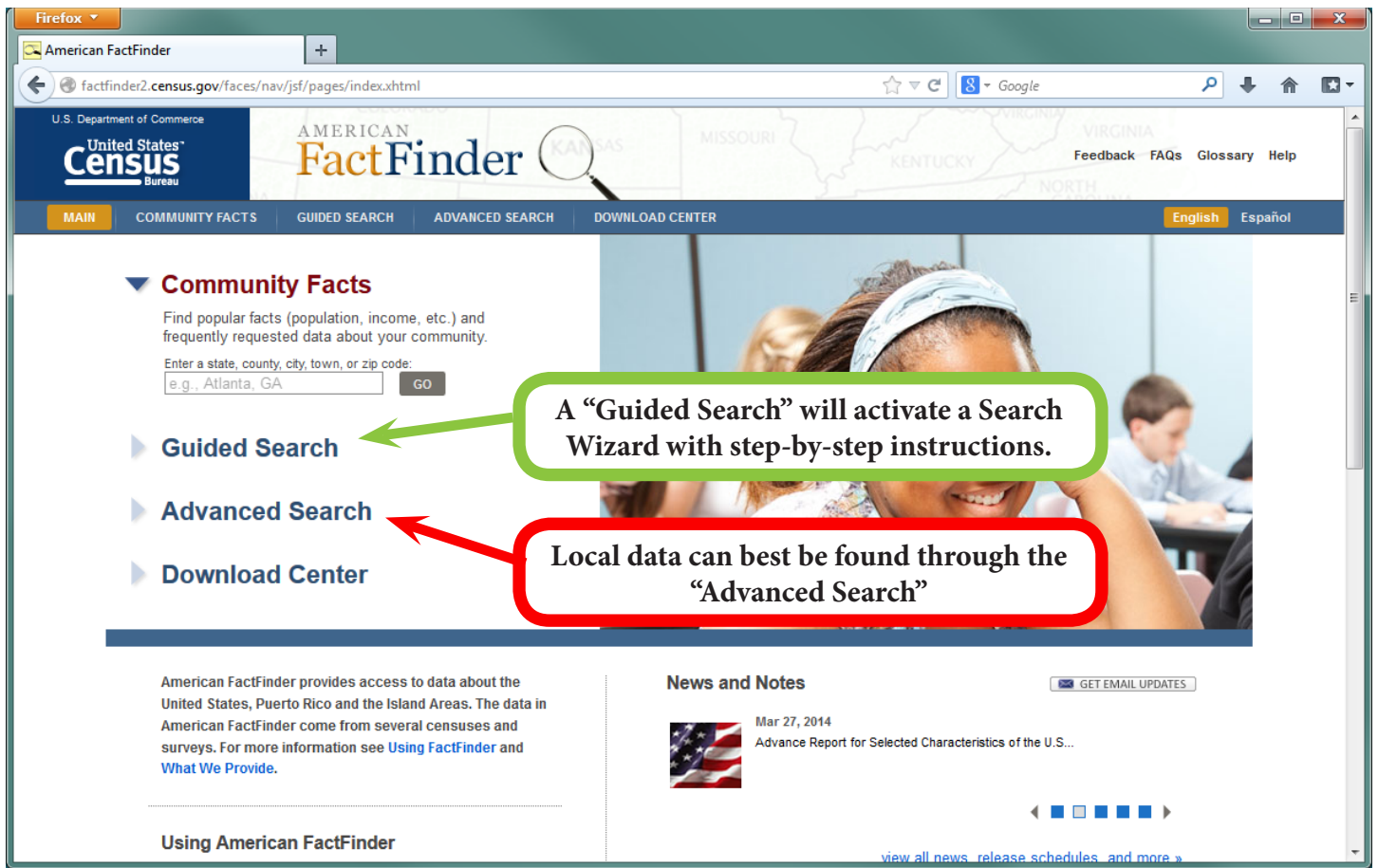


Figure 5: Here is the main landing page for the American FactFinder. You can reach this page by going through the Census Homepage as shown above or by going directly to [www.factfinder2.census.gov](http://www.factfinder2.census.gov) in your internet browser.

- Data can be found here using the Guided Search, which will lead you through a series of questions, or through the Community Facts link for basic demographic data about a state, county, town or zip code. This Tutorial will focus on accessing data through the “Advanced Search” method, which gives the user the most control over the search criteria and the data tables we can find.
- The Guided Search can be accessed by clicking on the top Menu bar or via the link on the left of the page.
- The Advanced Search can be accessed by clicking on the top menu bar or the link on the left of the page as well. If you are looking for specific data for a specific area or multiple areas, the Advanced Search is the best place to go.

Notes:

---



---



---



---



---



---



---



---



---



---

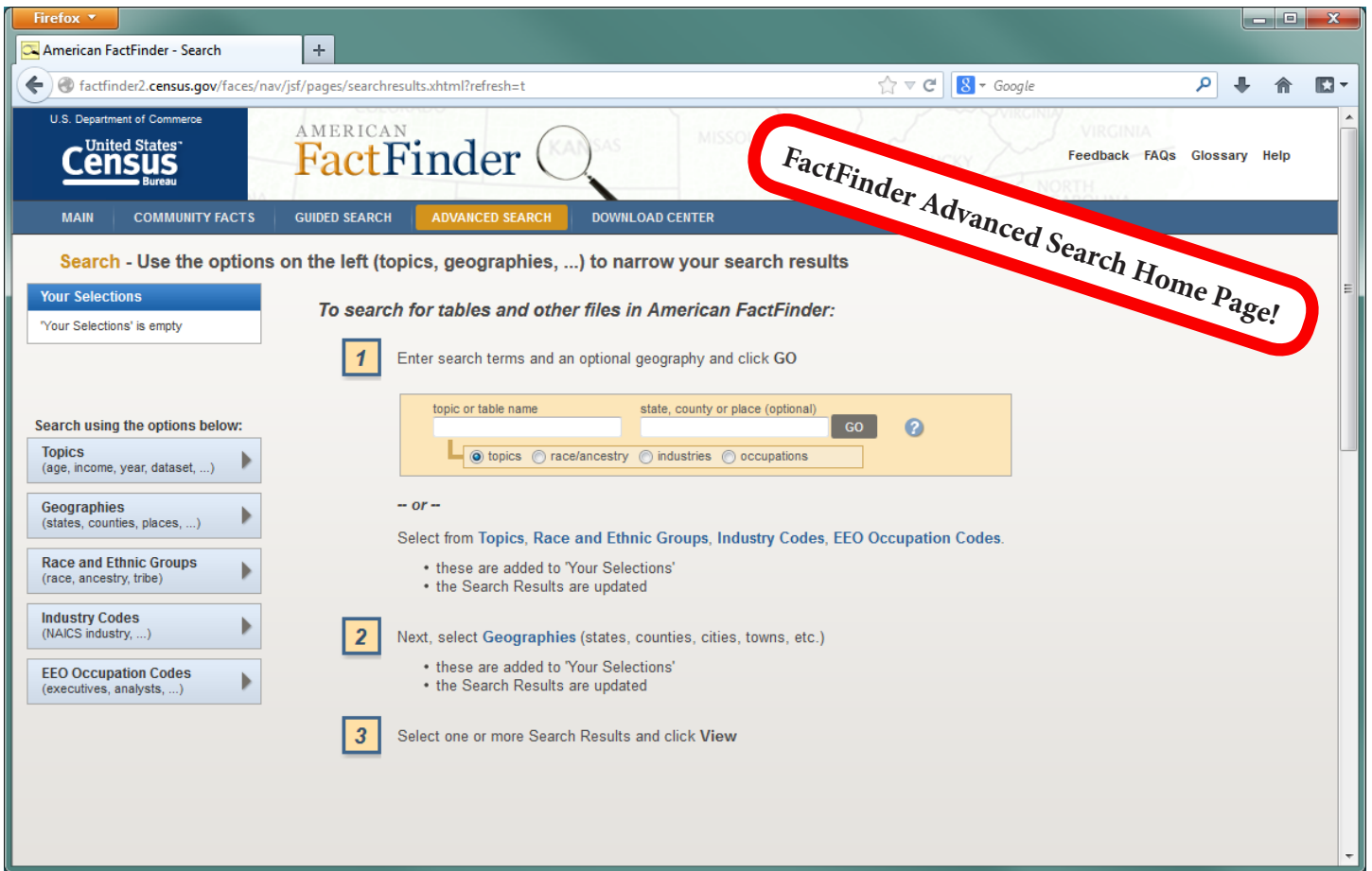


Figure 6: Main page for the Advanced Search.

- On the left you can see the search options: Topics, Geographies, Race and Ethnic Groups, Industry Codes, and EEO Occupation Codes. On the right, there is a quick search option which allows you to enter a topic or table name (if you know it) and the state, county, or place you are interested in learning about.

Notes:

---



---



---



---



---



---



---



---



---



---



---



**These are the "Search Filters"**

**The Datasets. You can get more info by clicking the information symbol.**

ID	Table, File or Document Title	Dataset	About
QT-P8	Race Reporting for the Asian Population by Selected Categories: 2010	2010 SF1 100% Data	<a href="#">i</a>
DP05	ACS DEMOGRAPHIC AND HOUSING ESTIMATES	2012 ACS 3-year estimates	<a href="#">i</a>
DP05	ACS DEMOGRAPHIC AND HOUSING ESTIMATES	2012 ACS 5-year estimates	<a href="#">i</a>
CP05	ACS DEMOGRAPHIC AND HOUSING ESTIMATES	2012 ACS 1-year estimates	<a href="#">i</a>
B01001D	SEX BY AGE (ASIAN ALONE)	2012 ACS 1-year estimates	<a href="#">i</a>
B01001D	SEX BY AGE (ASIAN ALONE)	2012 ACS 3-year estimates	<a href="#">i</a>
B01001D	SEX BY AGE (ASIAN ALONE)	2012 ACS 5-year estimates	<a href="#">i</a>
B01002D	MEDIAN AGE BY SEX (ASIAN ALONE)	2012 ACS 1-year estimates	<a href="#">i</a>
B01002D	MEDIAN AGE BY SEX (ASIAN ALONE)	2012 ACS 3-year estimates	<a href="#">i</a>
B01002D	MEDIAN AGE BY SEX (ASIAN ALONE)	2012 ACS 5-year estimates	<a href="#">i</a>
B02001	RACE	2012 ACS 1-year estimates	<a href="#">i</a>
B02001	RACE	2012 ACS 3-year estimates	<a href="#">i</a>
B02001	RACE	2012 ACS 5-year estimates	<a href="#">i</a>
B02006	ASIAN ALONE BY SELECTED GROUPS	2012 ACS 3-year estimates	<a href="#">i</a>
B02006	ASIAN ALONE BY SELECTED GROUPS	2012 ACS 5-year estimates	<a href="#">i</a>
B02011	ASIAN ALONE OR IN COMBINATION WITH ONE OR MORE OTHER RACES	2012 ACS 1-year estimates	<a href="#">i</a>

Figure 8: Search Results.

- As you can see there are many tables available for these search criteria. Each table has a table ID, a Title, and shows the Dataset from which the data is created. The Dataset will tell you also tell you when the data was collected – the most recent data is always displayed first in the list.
- On the left you will see the search filters (also known as Selection Filters) that you entered at the beginning: “Asian” and the “District of Columbia.” Next to each of these selections, there is a small orange “X” – clicking on this will remove the search filter.
- As you become familiar with using the American FactFinder system, you will learn more about the Datasets available. Click on the information symbol to the right of the Dataset name to learn more about the data, including the year it was collected or produced and the methods used to create the data.

Notes:

---



---



---



---



---



---



---





U.S. Department of Commerce  
United States Census Bureau

AMERICAN FactFinder

Advanced Search - Search all data in American FactFinder

1 Advanced Search 2 Table Viewer

Result 1 of 1 VIEW ALL AS PDF

QT-P8 Race Reporting for the Asian Population by Selected Categories: 2010 2010 Census Summary File 1

Table View BACK TO ADVANCED SEARCH

Actions: Modify Table Bookmark Print Download Create a Map

View Geography Notes View Table Notes

NOTE: For information on confidentiality protection, nonsampling error, and definitions, see <http://www.census.gov/prod/cen2010/doc/sf1.pdf>.

Geography: District of Columbia

Subject	Alone [1]	Alone or in combination with one or more other categories of same race [2]	Alone or in any combination [3]
ASIAN		5,402	6,417
Asian Indian	5,214		
Bangladeshi	226	244	266
Bhutanese	3	3	3
Burmese	110	114	134
Cambodian	70	80	97
Chinese (except Taiwanese)	4,887	5,166	6,204
Filipino	2,690	2,783	3,670
Hmong	22	24	26
Indonesian	146	160	226
Japanese	1,172	1,266	2,010
Korean	2,290	2,362	2,990
Laotian	58	62	69
Malaysian	41	50	66
Nepalese	139	150	161
Pakistani	558	602	688
Sri Lankan	176	188	221
Taiwanese	328	328	402
Thai	375	400	497

[2] One category alone (as in footnote 1), or in combination with one or more other categories within the same race group (e.g., Filipino and Korean). Individuals are included in each category.  
 [3] One category alone (as in footnote 1), or in combination with one or more other categories within the same race group (as in footnote 2), or in combination with any other race group (e.g., Filipino, Korean, and Black; or Filipino, White, and Black or African American).

Source: U.S. Census Bureau, 2010 Census.  
 Summary File 1, Tables PCTS, PCT6, and PCT7.

Figure 10: Sample Table.

- Here is a sample table. You can always go back to the list of tables by clicking the “Back to Search” link in the upper left or simply by clicking the “Back” arrow in your internet browser.
- At the top of the table page, there is 1) the title of the table, and 2) the Dataset name.
- The Data Table itself always appears in the middle of the page. Here we can see that in the year 2010 in the District of Columbia, there were 5,214 people who identified themselves as “Asian Indian.”
- More information about the data can be found in the Data Table Footnotes, at the bottom of the page.

Notes:

---



---



---



---



---



That was easy! Now, let's look at the other way we can access data – this time, we will use Selection Filters.

### Example: Using Selection Filters

The Census FactFinder gives us access to an enormous amount of data. As with the use of keywords above, we can “filter” all that data to give us exactly what we're looking for. There are a few ways we can filter the data:

1. Filter by Topic – such as “Race” or “Income” or “Poverty”
2. Filter by Geography – such as “County” or “State”
3. Filter by Race and Ethnic Groups – such as “Hispanic” or “African American”
4. Filter by Industry Codes – such as by NAICS or SIC code.
5. Filter by EEO Occupation Codes – such as specific Equal Employment Opportunity Occupation Codes

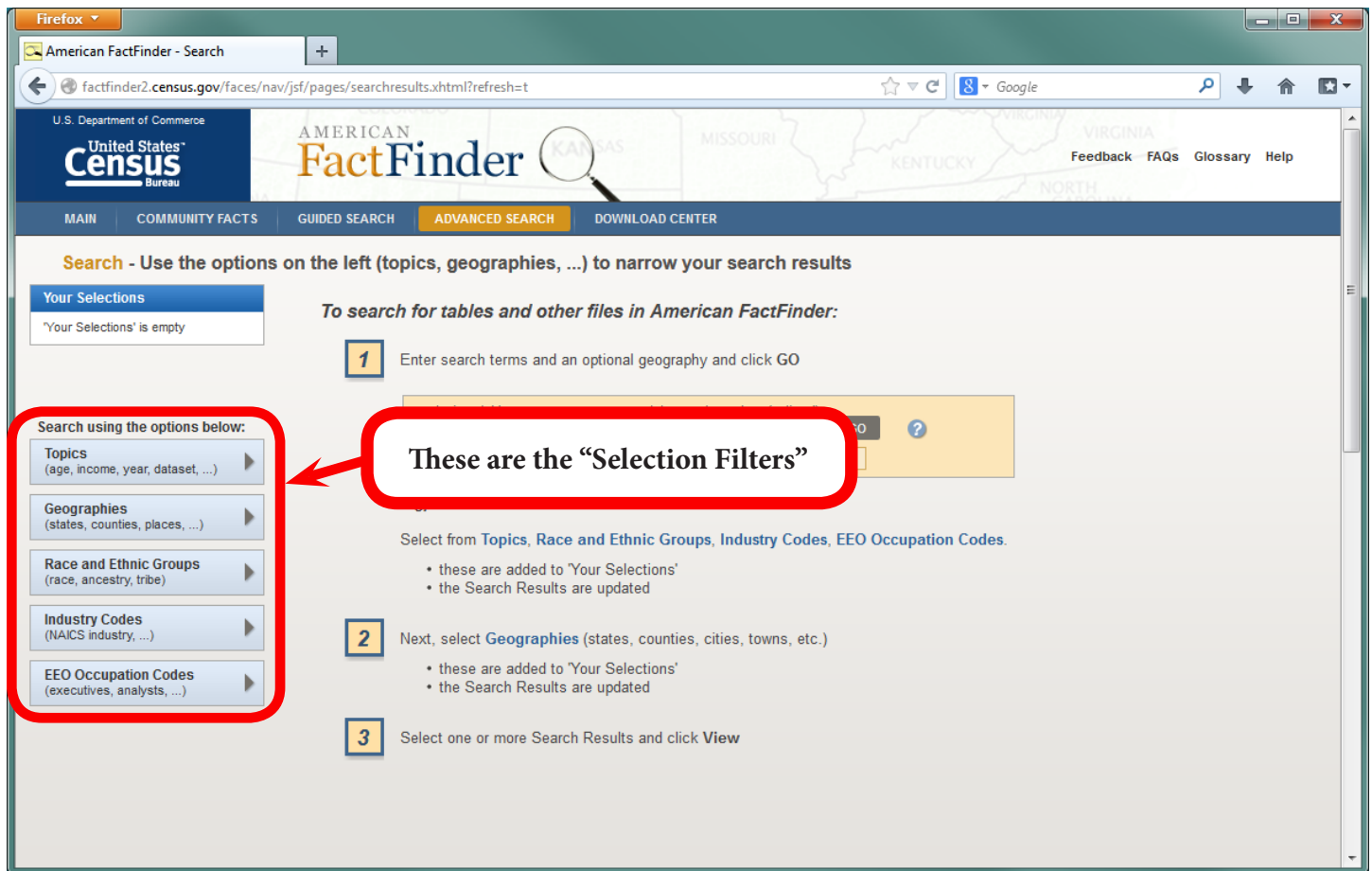


Figure 12: Main page for the Advanced Search.

- Here we are back at the main Census American FactFinder Homepage. Remember this page can be accessed through the Data tab on the Census Homepage, then by clicking “Advanced Search.”
- On the left are the five boxes for the Selection Filters. In this example, we will use the Topics and Geographies Selection Filters.

Notes:

---

---

---

---

---

---



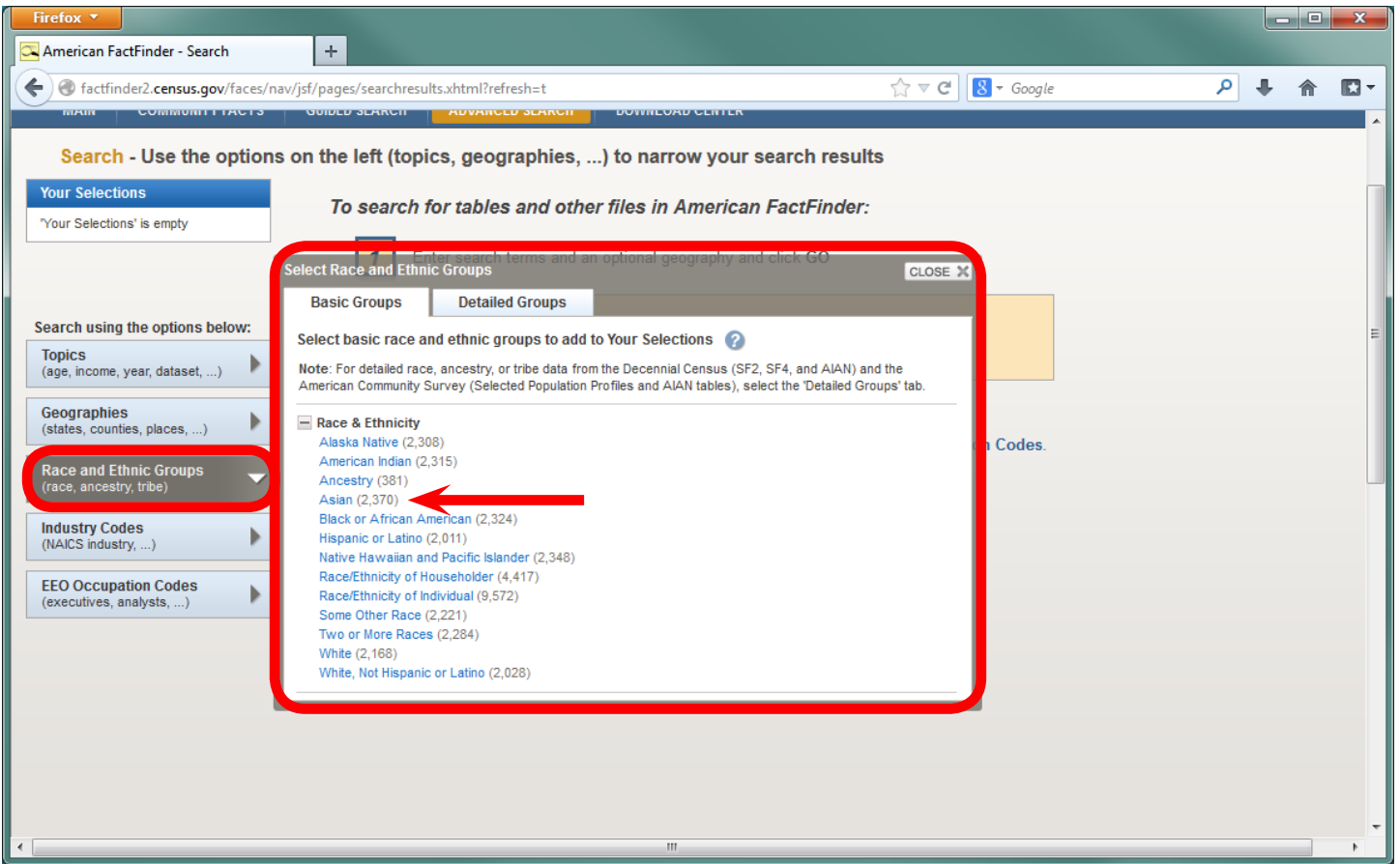


Figure 14: Main page for the Advanced Search with “Race and Ethnic Groups” clicked.

- Now click “Race and Ethnic Groups”
- The Select Race and Ethnic Groups window will appear. Here is where we can add information on Racial Groups.
- Just as with the previous example, we will find out what data is available when we use “Asian” as one of the Selection Filters.
- Notice each topic has a number next to it – this is the number of relevant tables associated with the topic. At the time this graphic was created, there were 2,370 unique data tables associated with the topic “Asian.”

Notes:

---



---



---



---



---



---



---



---



---



---



---





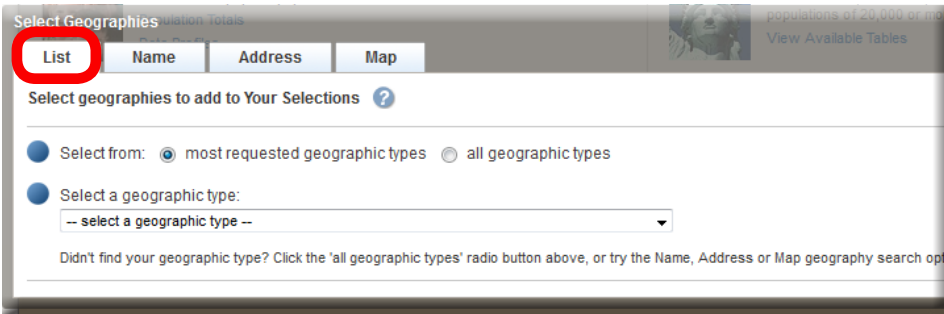


Figure 17: Main page for the Advanced Search with "Geographies" clicked and "List" selected.

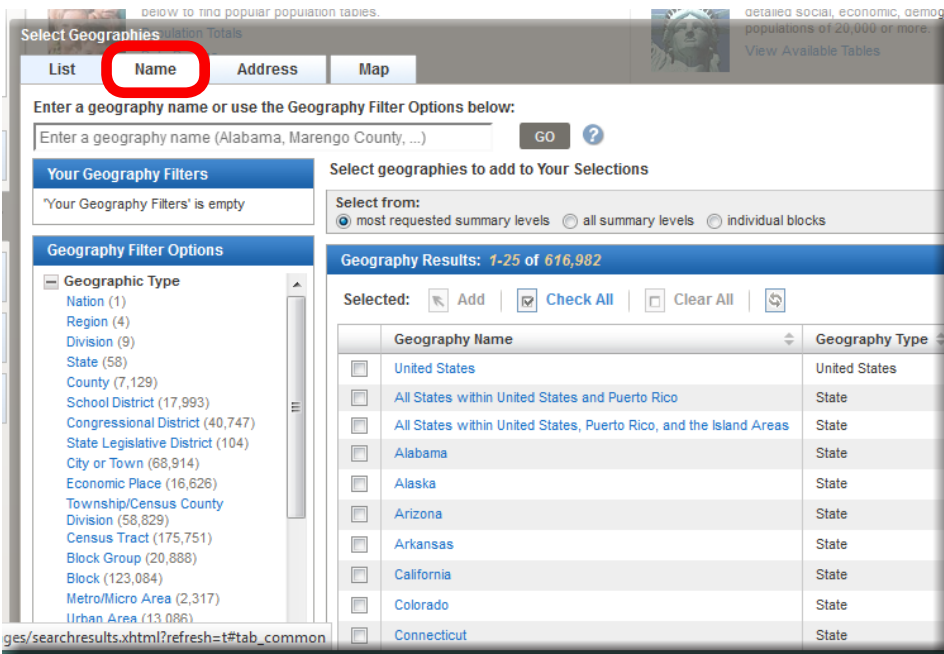


Figure 18: Main page for the Advanced Search with "Geographies" clicked and "Name" selected.

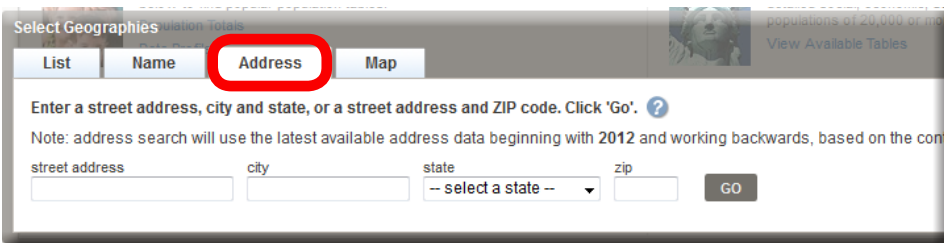


Figure 19: Main page for the Advanced Search with "Geographies" clicked and "Address" selected.

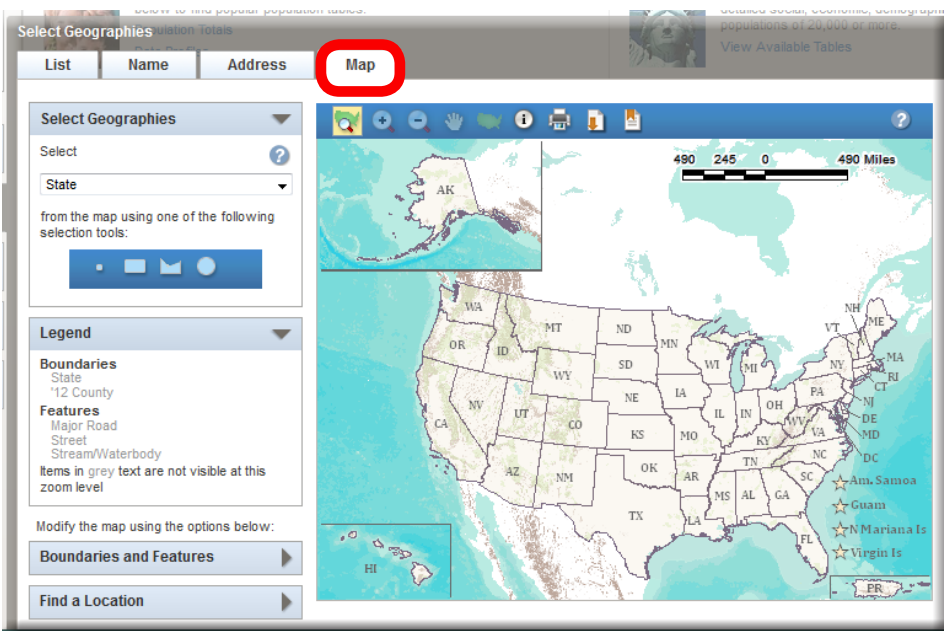


Figure 20: Main page for the Advanced Search with "Geographies" clicked and "Map" selected.

We can draw an area we are interested in on a Map. This might be a good option if you're interested in a region of the United States and want to see all the relevant geographies associated with that region.



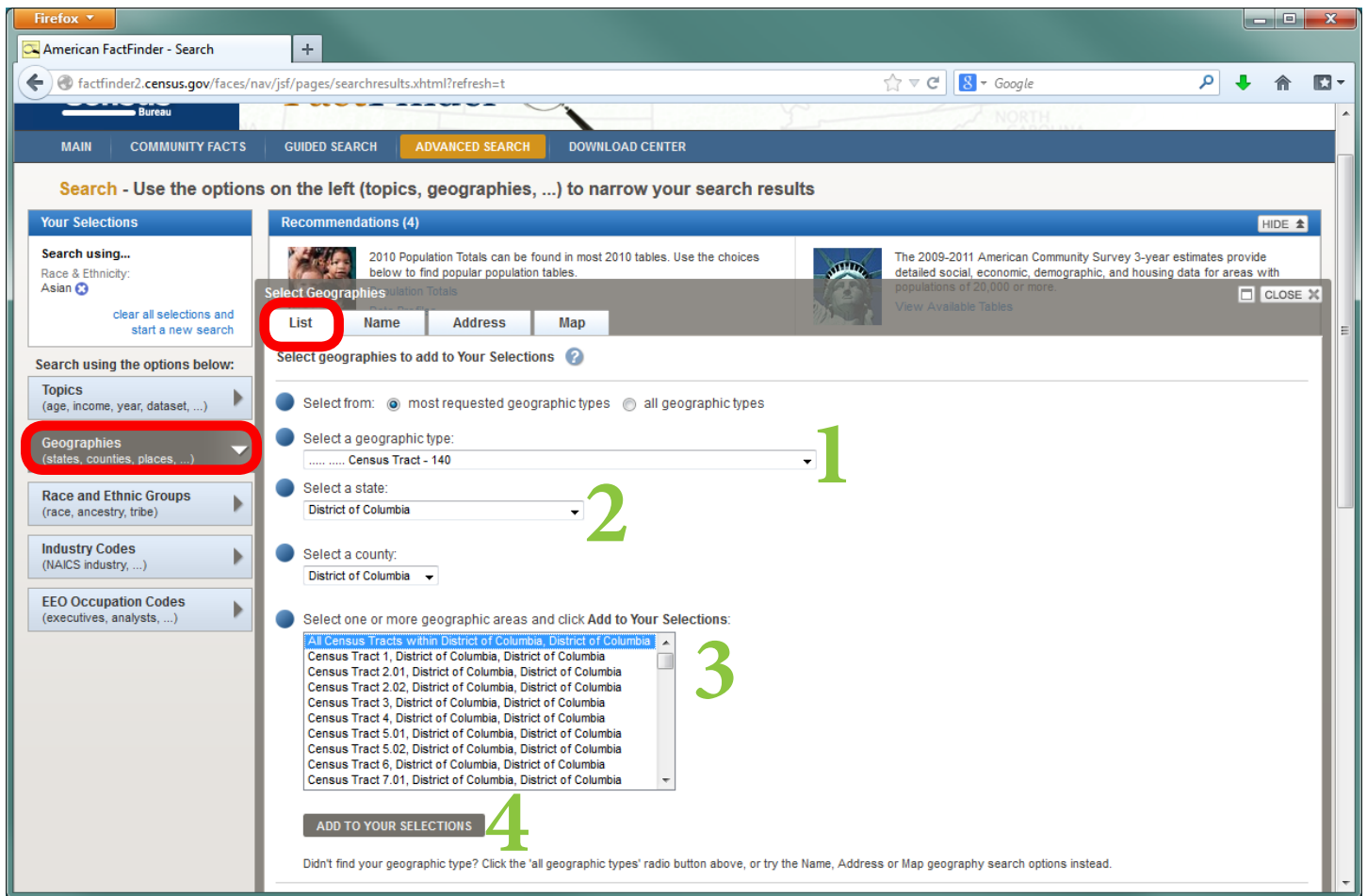


Figure 21 Main page for the Advanced Search with “Geographies” clicked and “List” selected.

- Let’s select a Geographic Selection Filter from a List.
  - Clicking the drop-down menu will display the list of most common geographies. We will select the Census Tract to display all the data available at that level of geography.
1. First, click “Census Tract.” Next, enter the State for which you would like to select Census Tracts. In this example, we are selecting data for the Census Tracts in the District of Columbia.
  2. Census Tracts are organized first by State, then by County. The District of Columbia is listed as a State and there is only one county in it. For the District of Columbia, data displayed for the County or the State will be the same.
  3. In this example, we will select “All Census Tracts within District of Columbia.”
  4. Click “Add to Your Selections” at the bottom of the window to add the Census Tracts to your Selection Filters. All of the relevant tables will then appear, just as in the previous example.

Notes:

---



---



---



---



---



---

## Example: Wards in the District of Columbia – How to Find Wards from a List of Geographies

One of the most commonly used geographies in the District of Columbia is the Ward. There are eight Wards in DC. The US Census Bureau designates Wards by the name “State Legislative District – Upper Chamber” or “SLDU.”

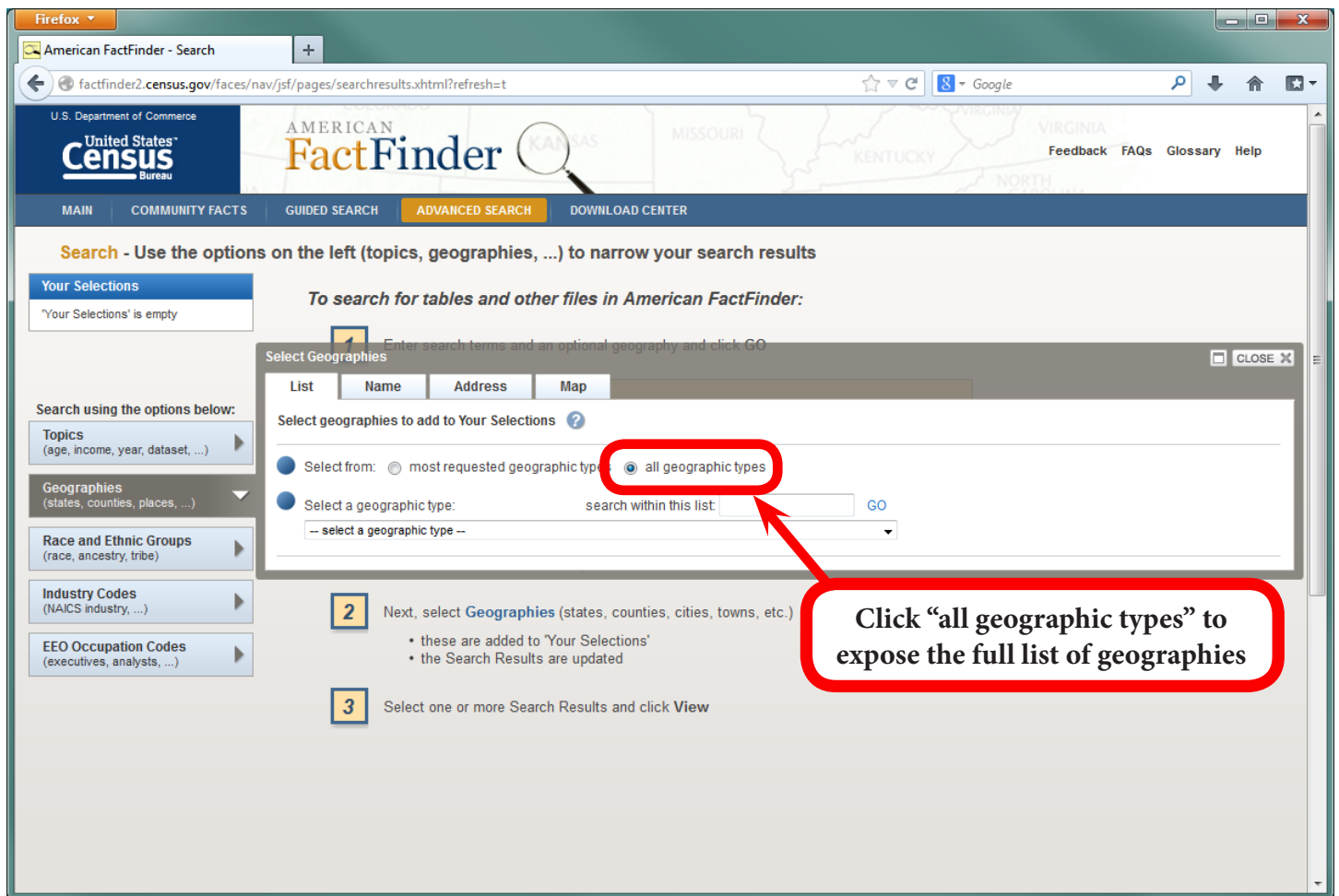


Figure 22 Main page for the Advanced Search with “Geographies” clicked, “List” selected, and “all geographic types” selected.

- Click on the Geographies tab on the left to display the Select Geographies window. Instead of choosing Census Tracts in the District of Columbia, in this example, we will create a Selection Filter for Wards.
- To display all the geography types including Wards, click on the button “all geographic types.”

Notes:

---

---

---

---

---

---

---

---

---

---

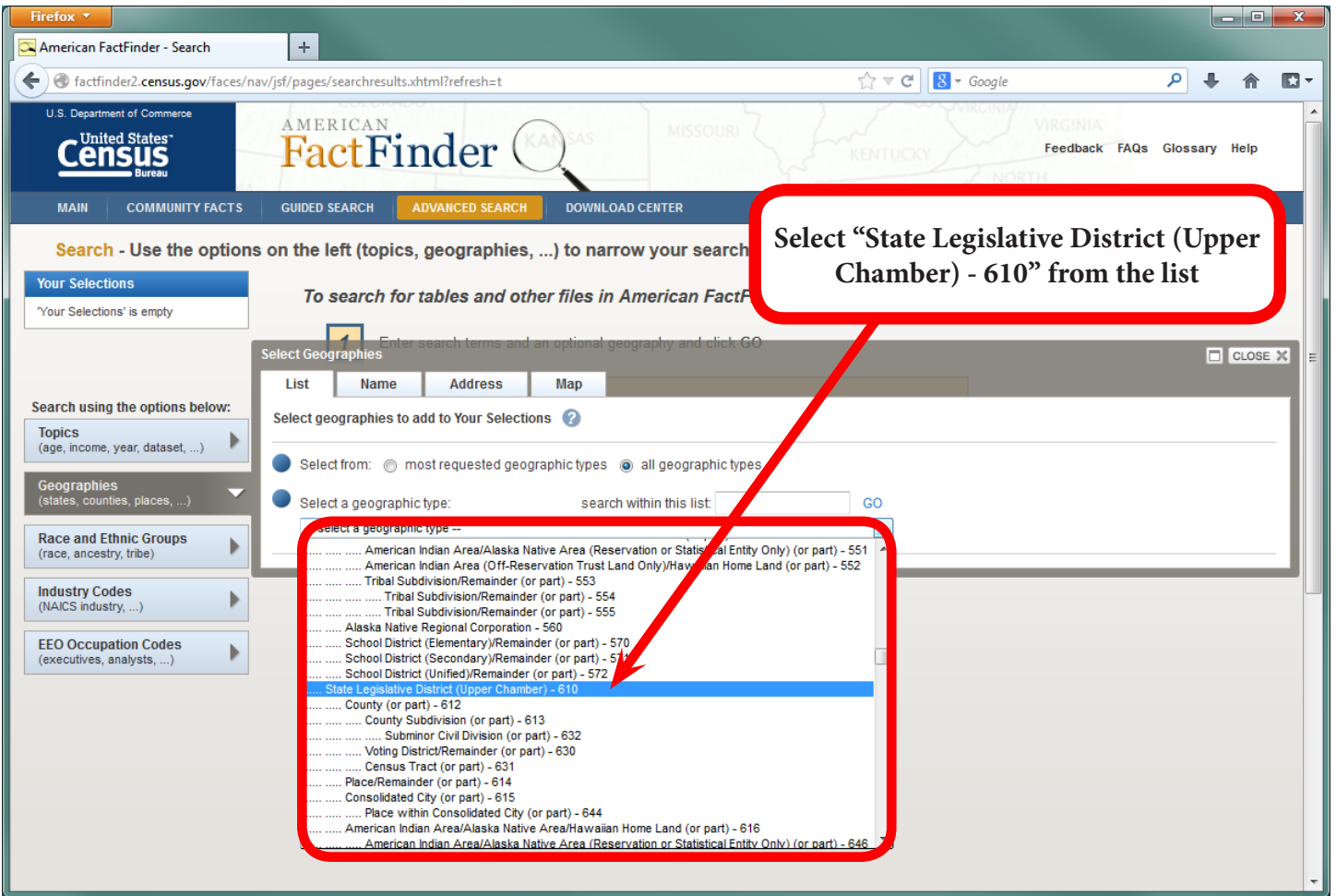


Figure 23 Main page for the Advanced Search with “Geographies” clicked, “List” selected, and “all geographic types” selected.

- Now the list will include Wards, which the Census Bureau designates as “State Legislative District (Upper Chamber) - 610”
- It’s important to note that “State Legislative District (Upper Chamber)” is listed multiple times, you want to select the one with the number “610” after it.

Notes:

---



---



---



---



---



---



---



---



---



---



---

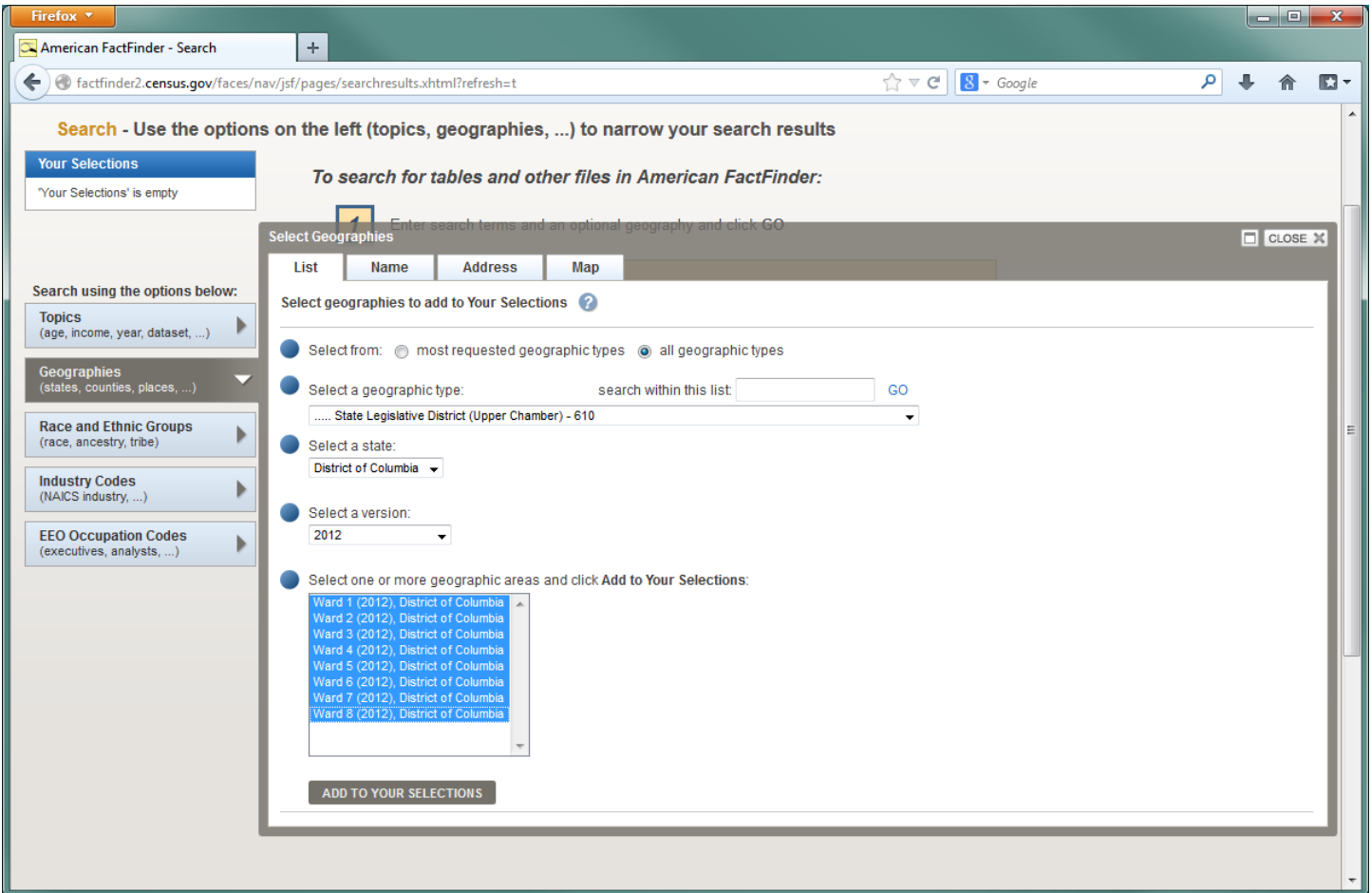


Figure 24 Main page for the Advanced Search with “Geographies” clicked, “List” selected, and “all geographic types” selected.

- Select the District of Columbia for State. Select the version of the Wards you would like to see. The latest version of the Wards is from 2012.
- Highlight all eight Wards by holding down the “Ctrl” button and selecting each Ward, then click, “Add To Your Selections.”

Notes:

---



---



---



---



---



---



---



---



---



---



---



---



---



---



---



---



---



---



---



---



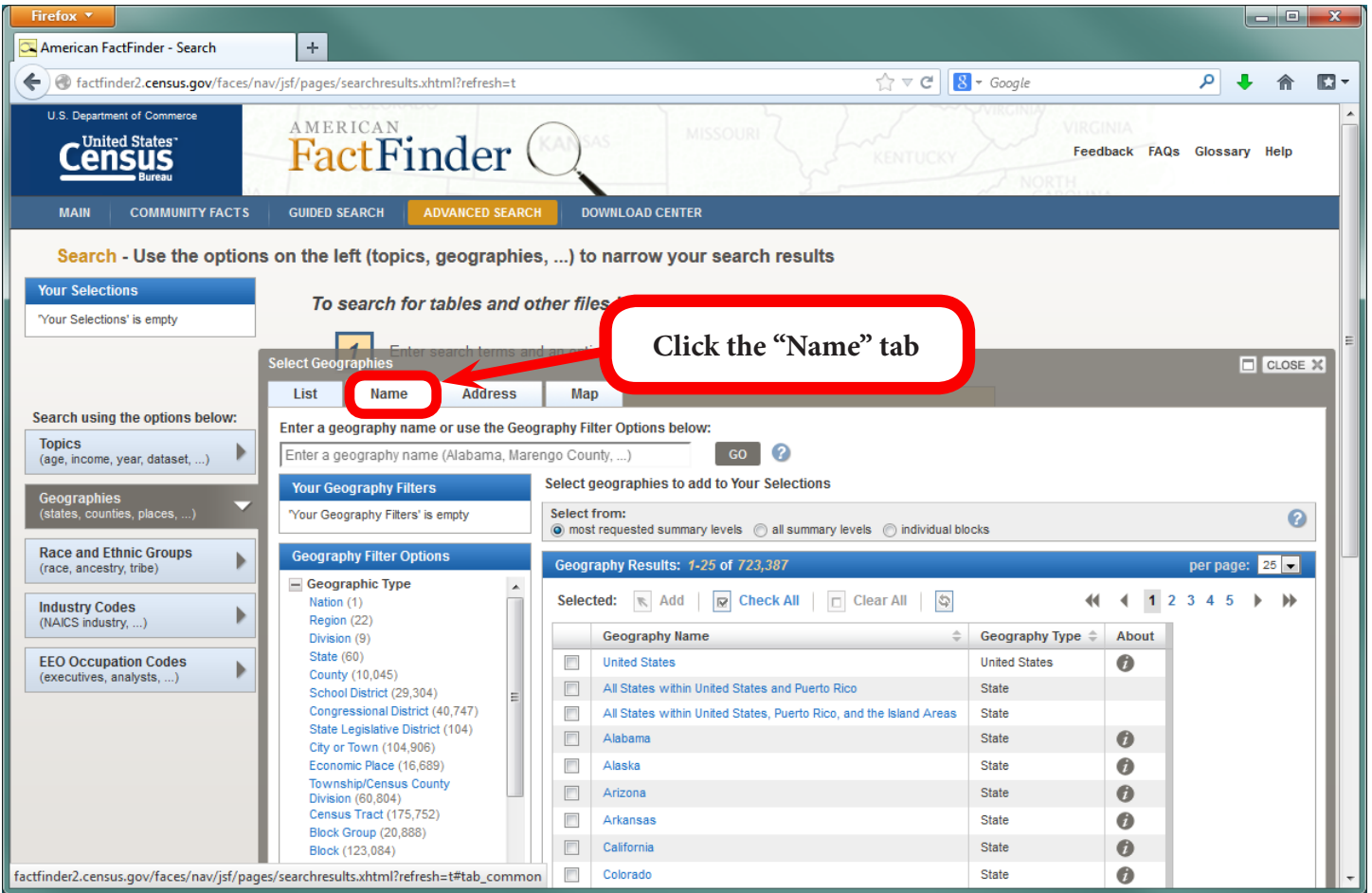
---



---

**Alternate Method: Wards in the District of Columbia – How to Find Wards from the Name of Geographies**

Wards can also be found using the Name of the Geography – “State Legislative District – Upper Chamber”



*Figure 25 Searching for Wards using Name Geography*

- We can select a geography by Name. This may be a preferable method for creating a Selection Filter for Wards in the District of Columbia, also known as “State Legislative Districts – Upper Chamber” in the American Factfinder system.

Notes:

---

---

---

---

---

---

---

---

---

---

---

---

---

---

---

---

---

---

---

---

---

---

---

---

---

---

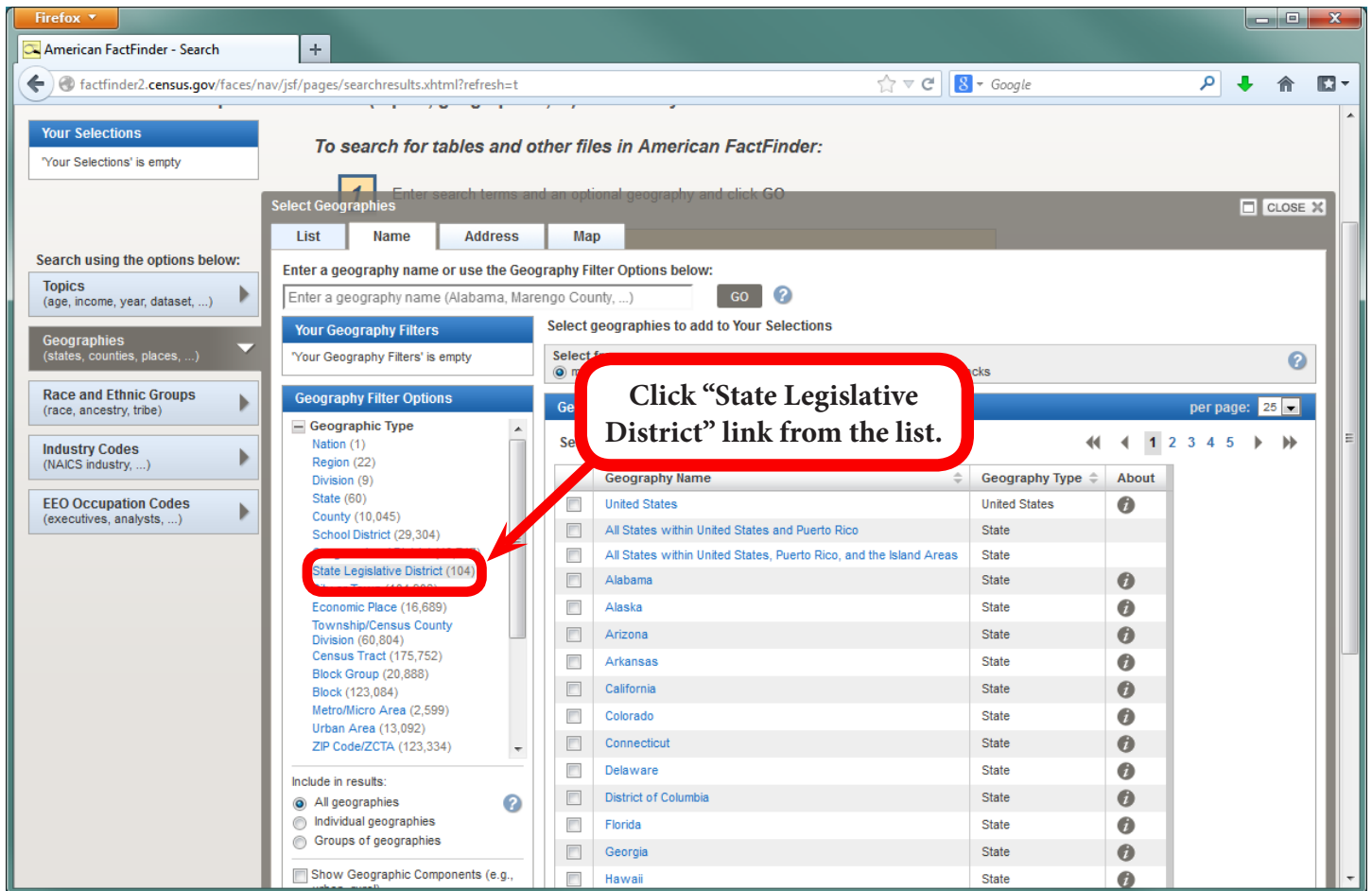


Figure 26 Select State Legislative District under Geography Type

- The list of Geographic Names appears on the left. Click "State Legislative District" from the list.

Notes:

---

---

---

---

---

---

---

---

---

---

**Click "All State Legislative Districts, Upper Chamber within District of Columbia" to add Wards to the Selection Filters.**

Geography Name	Geography Type	About
<input type="checkbox"/> All State Legislative Districts, Upper Chamber within Alabama	State Legislative District (Upper)	
<input type="checkbox"/> All State Legislative Districts, Lower Chamber within Alabama	State Legislative District (Lower)	
<input type="checkbox"/> All State Legislative Districts, Upper Chamber within Alaska	State Legislative District (Upper)	
<input type="checkbox"/> All State Legislative Districts, Lower Chamber within Alaska	State Legislative District (Lower)	
<input type="checkbox"/> All State Legislative Districts, Upper Chamber within Arizona	State Legislative District (Upper)	
<input type="checkbox"/> All State Legislative Districts, Lower Chamber within Arizona	State Legislative District (Lower)	
<input type="checkbox"/> All State Legislative Districts, Upper Chamber within Arkansas	State Legislative District (Upper)	
<input type="checkbox"/> All State Legislative Districts, Lower Chamber within Arkansas	State Legislative District (Lower)	
<input type="checkbox"/> All State Legislative Districts, Upper Chamber within California	State Legislative District (Upper)	
<input type="checkbox"/> All State Legislative Districts, Lower Chamber within California	State Legislative District (Lower)	
<input type="checkbox"/> All State Legislative Districts, Upper Chamber within Colorado	State Legislative District (Upper)	
<input type="checkbox"/> All State Legislative Districts, Lower Chamber within Colorado	State Legislative District (Lower)	
<input type="checkbox"/> All State Legislative Districts, Upper Chamber within Connecticut	State Legislative District (Upper)	
<input type="checkbox"/> All State Legislative Districts, Lower Chamber within Connecticut	State Legislative District (Lower)	
<input type="checkbox"/> All State Legislative Districts, Upper Chamber within Delaware	State Legislative District (Upper)	
<input type="checkbox"/> All State Legislative Districts, Lower Chamber within Delaware	State Legislative District (Lower)	
<input type="checkbox"/> All State Legislative Districts, Upper Chamber within District of Columbia	State Legislative District (Upper)	
<input type="checkbox"/> All State Legislative Districts, Lower Chamber within District of Columbia	State Legislative District (Lower)	
<input type="checkbox"/> All State Legislative Districts, Upper Chamber within Florida	State Legislative District (Upper)	
<input type="checkbox"/> All State Legislative Districts, Lower Chamber within Florida	State Legislative District (Lower)	
<input type="checkbox"/> All State Legislative Districts, Upper Chamber within Georgia	State Legislative District (Upper)	

Figure 27 Geography Search, Name Tab

- Scroll down the list and click on "All State Legislative Districts, Upper Chamber within District of Columbia" to add Wards to your Geographic Selection Filters.

Notes:

---

---

---

---

---

---

---

---

---

---

---

---

---

---

---

---

---

---

---

---

---

---

---

---

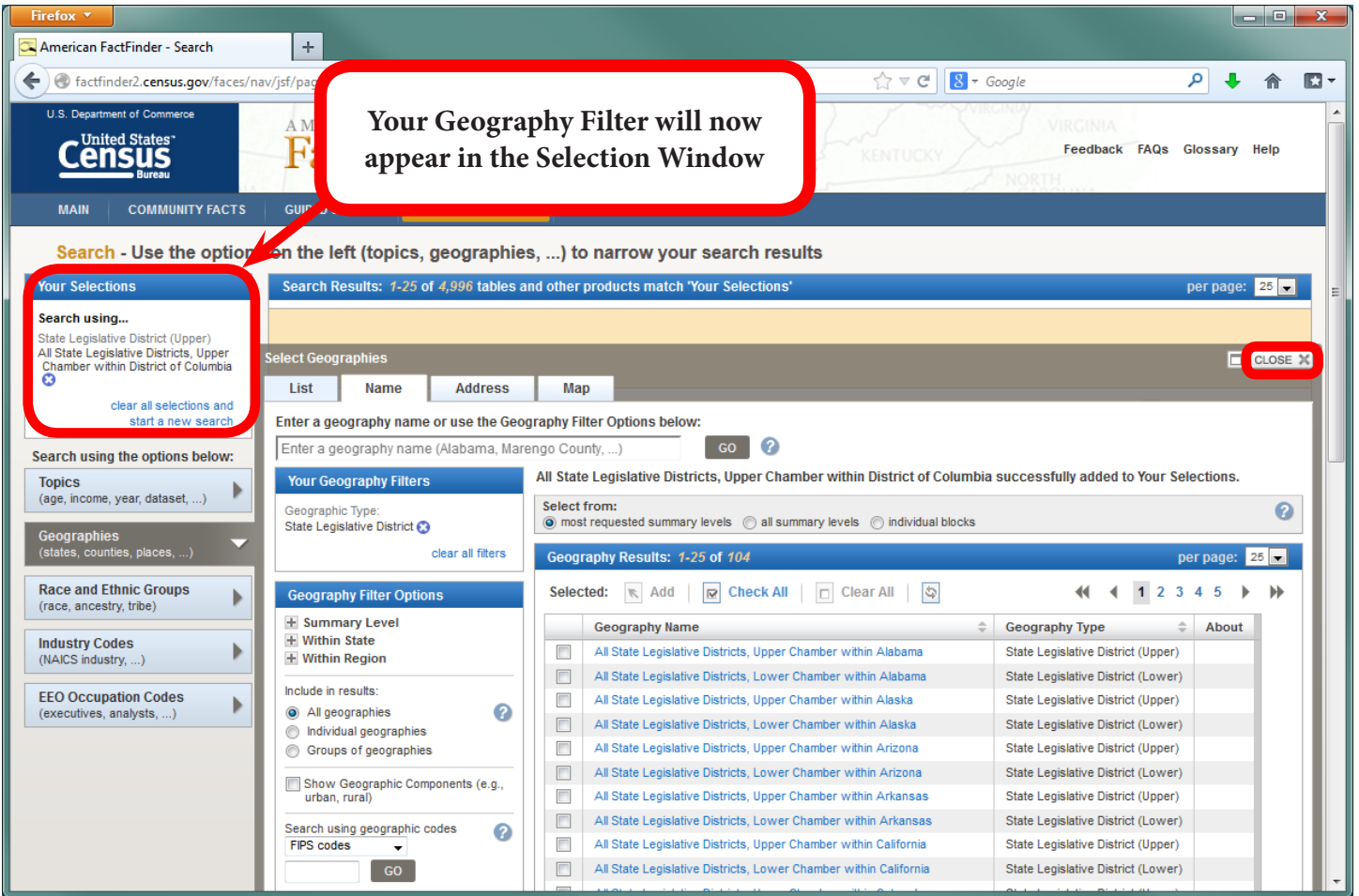


Figure 28 Geography Search, Name Tab

- Using either method for locating the “State Legislative Districts – Upper Chamber” for the District of Columbia, the Geographic Selection Filters will appear in the “Your Selections” box in the upper left.
- Now that we have created our Geographic Selection, we can close the Select Geographies window.

Notes:

---



---



---



---



---



---



---



---



---



---



---



---



---



---



---



---









Firefox  
American FactFinder - Results  
factfinder2.census.gov/faces/tableservices/jsf/pages/productview.xhtml?pid=ACS\_12\_5YR\_B01001D&prodType=table

B01001D SEX BY AGE (ASIAN ALONE)  
Universe: People who are Asian alone  
2008-2012 American Community Survey 5-Year Estimates

Table View

Actions: Modify Table | Bookmark | Print | Download | Create a Map

View Geography Notes | View Table Notes

Although the American Community Survey (ACS) produces population, demographic and housing unit estimates, it is the Census Bureau's Population Estimates Program that produces and disseminates the official estimates of the population for the nation, states, counties, cities and towns and estimates of housing units for states and counties.

<< 1 - 18 of 20 >>

	United States	District of Columbia	Ward 1 (2012), District of Columbia	Ward 2 (2012), District of Columbia	Ward 3 (2012), District of Columbia	Ward 4 (2012), District of Columbia	Ward 5 (2012), District of Columbia	Ward 6 (2012), District of Columbia	Ward 7 (2012), District of Columbia									
	Estimate	Margin of Error	Estimate	Margin of Error	Estimate	Margin of Error	Estimate	Margin of Error	Estimate	Margin of Error								
Total:	14,859,795	+/-19,046	21,440	+/-484	3,415	+/-532	6,871	+/-656	5,041	+/-525	1,162	+/-250	1,022	+/-237	3,486	+/-488	209	+/-111
Male:	7,055,679	+/-11,651	9,038	+/-310	1,430	+/-276	3,040	+/-365	1,871	+/-331	432	+/-140	411	+/-149	1,639	+/-330	66	+/-50
Under 5 years	452,981	+/-3,170	389	+/-107	31	+/-27	67	+/-69	130	+/-88	18	+/-20	7	+/-9	102	+/-63	0	+/-30
5 to 9 years	459,266	+/-4,430	145	+/-87	0	+/-30	0	+/-30	27	+/-40	6	+/-11	0	+/-30	87	+/-68	0	+/-30
10 to 14 years	443,360	+/-4,443	229	+/-101	25	+/-39	33	+/-32	135	+/-98	0	+/-30	18	+/-29	0	+/-30	18	+/-29
15 to 17 years	275,337	+/-2,132	127	+/-61	0	+/-30	47	+/-48	22	+/-28	0	+/-30	0	+/-30	44	+/-32	14	+/-26
18 and 19 years	210,428	+/-1,901	550	+/-152	27	+/-30	332	+/-134	93	+/-72	0	+/-30	83	+/-60	15	+/-22	0	+/-30
20 to 24 years	567,586	+/-3,247	1,028	+/-195	134	+/-91	573	+/-197	150	+/-91	12	+/-20	53	+/-50	95	+/-73	6	+/-11
25 to 29 years	598,384	+/-2,635	1,506	+/-124	251	+/-120	473	+/-152	288	+/-144	76	+/-56	33	+/-37	348	+/-156	10	+/-19
30 to 34 years	593,043	+/-2,389	1,417	+/-113	309	+/-121	622	+/-134	143	+/-118	38	+/-28	38	+/-39	267	+/-96	0	+/-30
35 to 44 years	1,169,948	+/-2,863	1,738	+/-72	344	+/-133	435	+/-115	339	+/-146	99	+/-75	70	+/-48	421	+/-127	10	+/-16
45 to 54 years	964,155	+/-2,552	778	+/-65	204	+/-104	177	+/-118	217	+/-124	12	+/-21	27	+/-35	131	+/-84	0	+/-30
55 to 64 years	702,003	+/-1,921	601	+/-36	43	+/-36	148	+/-65	222	+/-80	58	+/-32	49	+/-39	53	+/-30	0	+/-30
65 to 74 years	388,129	+/-1,306	307	+/-36	16	+/-26	82	+/-47	76	+/-48	95	+/-42	30	+/-33	0	+/-30	8	+/-17
75 to 84 years	177,900	+/-1,490	160	+/-53	13	+/-20	51	+/-40	17	+/-28	9	+/-15	3	+/-6	67	+/-52	0	+/-30
85 years and over	53,159	+/-1,414	63	+/-53	33	+/-48	0	+/-30	12	+/-18	9	+/-14	0	+/-30	9	+/-17	0	+/-30
Female:	7,804,116	+/-10,007	12,402	+/-323	1,985	+/-333	3,831	+/-436	3,170	+/-394	730	+/-179	611	+/-152	1,847	+/-262	143	+/-88
Under 5 years	437,961	+/-2,638	296	+/-88	114	+/-74	48	+/-54	76	+/-61	20	+/-24	5	+/-11	33	+/-32	0	+/-30
5 to 9 years	461,008	+/-3,691	291	+/-93	46	+/-32	31	+/-38	121	+/-83	14	+/-20	25	+/-29	43	+/-38	11	+/-19
10 to 14 years	440,578	+/-3,959	225	+/-90	25	+/-33	0	+/-30	146	+/-91	0	+/-30	21	+/-22	33	+/-27	0	+/-30
15 to 17 years	264,111	+/-1,954	142	+/-53	41	+/-41	26	+/-28	30	+/-39	0	+/-30	14	+/-21	31	+/-30	0	+/-30

Figure 31 Table Results

- This data table shows the Sex by Age for the Asian Population by Ward in the District of Columbia and the United States as a whole.

Notes:

---



---



---



---



---



---



---

We at the DC Office of Planning/State Data Center hope you have found this tutorial useful. Remember there is no substitute for practice, so after you have walked through this tutorial, try finding a few other tables using different Selection Filters. The amount of data offered by the Census is enormous and the data you're looking for is likely to be found through this system. Good luck!

For more information contact:  
 D.C. Office of Planning State Data Center  
 1100 4th Street SW, Suite E650, Washington, DC 20024  
 202.442.7600 ph 202.442.7638 fax  
 www.planning.dc.gov

