

betondesign

concrete, only different



the strong connection

eurocol

FLOOR AND WALL WITH THE LOOK OF **BASIC CONCRETE**

In addition to its own product development, Forbo Eurocol has a keen eye for signals from the market for new trends and client needs. A good example of this is BetonDesign, an innovation on floor and

wall finishing, available in various colours. Ideal for the fast and easy finishing of floors and walls, that provides a great concrete look.

CONCRETE, ONLY DIFFERENT

Among architects there is a need for a powerful, easy to apply finishing that can be used for floors and walls. This finishing should have the basic look of unfinished level concrete. After comprehensive development and testing, the Product Development department of Forbo Eurocol came up with the innovative solution that is BetonDesign. A finishing coat of 1 to 1.5 mm thickness, which cannot be told apart from real concrete, only without the drawbacks of getting dusty and dirty fast.

Floor and wall

BetonDesign can be applied directly to a suitable surface. The result is a clean, level floor or wall, with a high-tech industrial look and feel and the associated quality and sustainability. If so desired the party applying the product can also create some texture in the finishing coat.

For stylish and unique decoration, anywhere you want it: at home, in the office, in schools, healthcare institutions, sports facilities and so on.

Easy to apply

Forbo Eurocol has trained specialist companies in applying the BetonDesign product, yet any professional installer will find the product easy to work with.

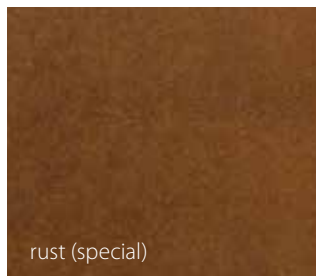
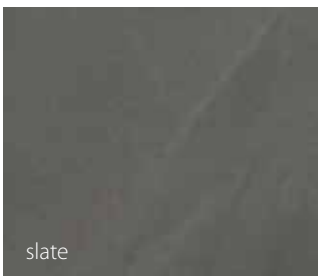
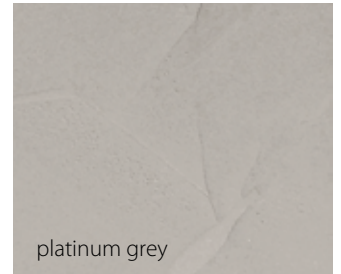
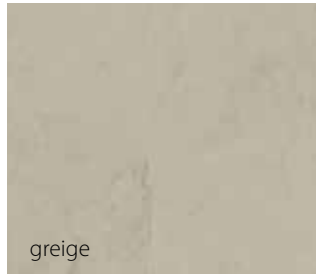
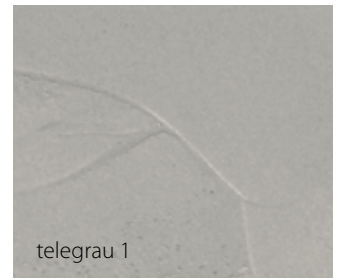
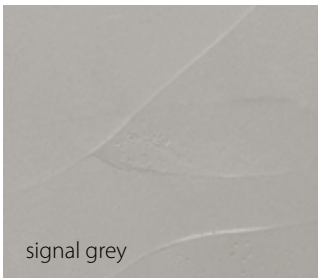
The Eurocol product is particularly easy to process, so that it can be applied effortlessly to almost any floor or wall. BetonDesign is also very suitable for more demanding applications. This makes it the perfect finishing product for building projects, both in larger and smaller spaces.

Many advantages

- ready for use
- wonderful concrete look
- can be used for floor and wall
- dust free, hard-wearing and stain resistant
- easy to apply as a thin finishing coat
- coat just 1 - 1.5 mm thick



COLOURS



For example, from approx. 450 m² and above, RAL, Pantone or RGB can be used to create a large number of other colours. The minimum delivery time for this special is 6 weeks from the customer's approval of the colour. Contact Forbo Eurocol for available options.

PREPARATION OF THE BASE

Base

- concrete
- sand and cement mix
- anhydrite
- shrink-proof cement-bound levelling compound

The base must be clean, free of grease, dust and other soiling. Furthermore, the base must be stable and level as well as permanently dry and indelible. BetonDesign must always be applied to a level surface. Cement composite subfloors must be levelled using 990 Europlan Direct and calcium sulphate composite subfloor (anhydrite) must be levelled using 925 Europlan Alpha Direct. Walls to be levelled with 658 Wandoforte or 957 Wandoquick. We recommend that after drying you sand the levelling coat lightly with a sanding gauze, coarseness 100 or finer, and remove all dust using an industrial vacuum cleaner.

BetonDesign is not suited for levelling surfaces. The more level the surface, the better the result will look.

Any dilations that exist in the surface must be respected and must always be followed in the BetonDesign. Breaks or cracks must be properly repaired first (scrape out loose bits, apply gauze tape and fill with water-repellent repair cement/filler).

Cement composite subfloors must harden for at least 28 days and they may have a residual moisture percentage of 2.5% maximum. Calcium sulphate subfloors can have a maximum residual moisture percentage of 0.5%.

Processing

Always check the packs for damage before you open them. If the bucket is not damaged, you may open it. Otherwise, you must contact your supplier.

BETONDESIGN IS APPLIED TO THE SURFACE IN 2 COATS



Step 1. Mix

Thoroughly mix/stir the BetonDesign, mechanically, at a low speed, using a mixing rod. Use a mixing rod that is about 1.3 of the size of the bucket, e.g. the 855 Mixing rod. Use: 400 - 500 g/m².

**2****Step 2. The first coat**

Apply the first coat using a Venetian trowel. Use a narrow spreading knife along skirting etc. Apply the material to your wall or floor, depending on the desired texture, and make sure that you cover the entire surface. The coat helps determine the texture of the product, and therefore the result (a larger trowel will give a smoother result). Make sure that you don't rework the applied product too much, for the stainless-steel trowel may leave black stains in the drying product. Preferably, the product is applied wet-on-wet. This prevents the product applied/dried earlier from tearing. If for practical reasons this is not possible, you may also spread the transitional areas to zero and apply more product later. Choose a corner in the wall or floor where you will start, and work from this corner in a diagonal line, so that it is easy to continue wet-on-wet. After applying the first coat, leave to dry for approximately 3 hours at a room temperature of 20 °C. Lower temperatures require a longer drying time.

**3****Step 3. Sanding the first coat**

Lightly sand the first coat, preferably using an eccentric sander with a sanding disc, coarseness 150. Please note that the texture in the 1st coat will also determine the look of the result, (manual sanding is also possible, using a sanding bobbin with coarseness 180 sanding paper; make circular motions when sanding). Then make the total surface properly dust free using an industrial vacuum cleaner.

**4****Step 4. The second coat**

Thoroughly mix/stir the material, as described in step 1, until you get a smooth substance. Next, the second coat can be applied. See step 2. Apply the material depending on the desired texture. Make sure you apply a thin coat. Then allow this coat to dry completely. The drying time is 3 - 6 hours. Use: 400 - 500 g/m².

**5****Step 5. Sanding the second coat**

After drying, the second coat may be sanded lightly as described in step 3. The intensity of the sanding has a direct effect on what the result will look like. Next, make the base dust free using an industrial vacuum cleaner. Prevent footprints in the floor by wearing shoe covers.

6

Step 6. The finishing

Finally, finish BetonDesign using the BetonDesign coating system. After sanding and made free of dust, the walls can be finished with 310 FinishCoat straight away. When applied to a floor, always apply a coat of 300 BaseCoat first and let this dry fully. NB: thoroughly shake the packaging for at least 1 minute before use. Apply 300 BaseCoat using a 9-mm microfiber paint roller. This coat has an impregnating effect and ensures the proper adhesion of the 310 FinishCoat. The product must be applied evenly and without pressure across the entire surface. We advise to roll out the product in random directions. When applying the product to the floor wear shoe covers to prevent foot prints. Use: 100 - 120 g/m².



Applying 310 FinishCoat

After the first coat of 300 BaseCoat has been applied to the floor, the top coat of 310 FinishCoat may be applied, after at least 2 hours drying time yet within 24 hours' maximum. NB: Thoroughly shake the packaging for at least 1 minute before use. The product must be applied evenly and without pressure across the entire surface. Apply the system using a 9mm microfiber paint roller. We advise to roll out the product in random directions. Spreading capacity: 50 g/m² per coat. After a drying time of at least 2 hours, yet no more than 24 hours, a 2nd coat of 310 FinishCoat must be applied. After 24 hours, the finished coat is cured for 80%. Only after approximately 8 days the paint system is resistant. Therefore, it is important that within these 8 days the floor or wall does not get stained and/or damp, as this may lead to a damaged finishing. The drying times mentioned here are based on circumstances as specified in the processing conditions.



Finishing with 311 TopCoat for a matte look and heavier use

For use in projects where the wall is more heavily loaded, we advise you to finish the BetonDesign directly with the 2-component 311 TopCoat paint system. The floor is finished with 301 BaseSealer together with 311 TopCoat. Before use, mechanically stir the 301 BaseSealer well for at least 1 minute until it forms a homogeneous mass. The mixer must be provided with a plastic layer or coating. Apply the 301 BaseSealer base coat in one completely opaque layer using an epoxy roller or 13 mm nylon roller. Apply the paint evenly over the entire surface and do not apply too much pressure to avoid roller marks.

After the 301 BaseSealer layer has been applied, after a drying time of 2-4 hours but at the latest within 48 hours, the floor can be painted with 311 Top Coat. After 48 hours, the 301 BaseSealer layer must first be sanded with K180 sandpaper, and then de-dusted well before the 311 TopCoat can be applied. Mix the 311 TopCoat as described on the product data sheet. We advise to roll out the paint in any direction. The drying time of the 311 TopCoat layer is at least 24 hours. The quoted drying times apply at a temperature of 20 °C. Lower temperatures will increase the drying time. After 24 hours the finished coat is cured for 80%.

Only after approximately 7 days the top coat will be fully mechanically and chemically resistant. Therefore, it is important that within these 7 days the floor or wall does not get stained and/or damp, as this may lead to a damaged finishing.

Use: 50 - 75 g/m² per coat.



TIPS FOR MAINTAINING YOUR BETONDESIGN FLOOR

- We advise to regularly treat your BetonDesign floor with 312 BetonDesign Conditioner, a high-grade cleansing concentrate for cleansing and maintenance at once. The floor will be protected by a film that shields the floor from dirt. This film is removed every time you clean the floor. In the event of regular use, the look of the floor will be preserved (no sheen). As an alternative, a pH-neutral cleansing agent may be used. Never use chlorine or bleach!
- Provide a proper door mat at the entrance.
- Use soft protection underneath chair legs (e.g. cork or felt), and replace them in time if they get damaged.
- Rolling furniture should be fitted out with soft wheels.
- By following the above tips, scratch formation can be minimised.

Underfloor heating constructions

BetonDesign can be used on underfloor heating constructions. The start-up protocol of the underfloor heating must first have been performed entirely in accordance with supplier guidelines. Switch off the heating one day before application; switch back on at least 72 hours after applying the final coat, in steps of 5 °C water temperature maximum per day. Make sure that the floor temperature never exceeds 29 °C.

Conditions for processing

Desired room temperature	: 18 ° - 23 °C
Temperature for material and subfloor	: min. 15 ° - max. 20 °C
Relative humidity	: 40 - 70%.

Always consult our technical production information sheets first. When in doubt about how to use of the product, please contact our Technical Help Desk.



Do you have any further questions about BetonDesign?

For technical advice please call our **Technical Advice department: +31(0)75 627 16 30** or contact your Technical Commercial Consultant.

Forbo Eurocol Nederland B.V.
PO Box 130, 1520 AC Wormerveer
T +31(0)75 627 16 00, F +31(0)75 628 35 64
info.eurocol@forbo.com, www.eurocol.co.uk
Technical advice +31(0) 075 627 16 30

Eurocol is part of the Forbo Group

