

Step-by-step Bit-rate change Multichannel modules of EHS/EDS/EBS/ESS series in MPOD

Disclaimer: Please READ THE WHOLE DOCUMENT first to make sure you have understood the sequence all of the necessary steps and do know about all the necessary equipment and Software before starting the process of changing the bit-rate! This document is not intended to be shown to final-customer, use for iseg representative ONLY! Should you have any questions regarding the process, contact sales@iseg-hv.de or stefan.jurk@iseg-hv.de before starting the process!

Necessary equipment:

1. MPOD
2. EHS/EDS/EBS/ESS-module
3. PCAN-USB Adapter (see picture 1, left)
4. MPOD-Backplane Adapter (see picture 2 and picture 3)
5. B-Type USB cable (see picture 4)



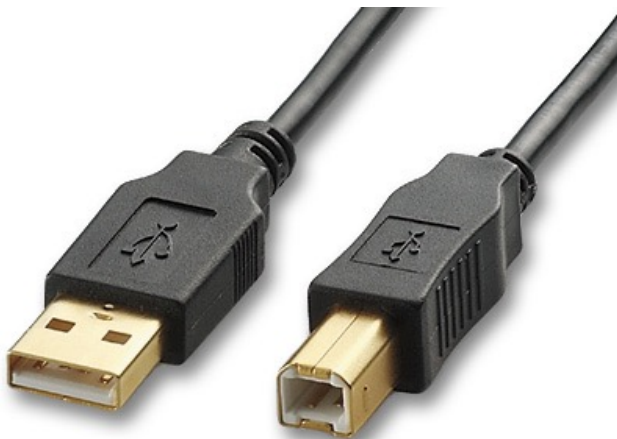
Picture 1



Picture 2



Picture 3



Picture 4

Necessary software:

1. W-ie-Ne-R MUSEcontrol

<http://file.wiener-d.com/software/MUSEcontrol/MUSEcontrolInstall-2.1.3324.0.exe>

2. isegCANControl

<http://download.iseg-hv.com/software/isegCANControl/current/isegCanControlSetup-1.8.2.0-win32.exe>

Please download and install both software packages on the computer you are doing the bit-rate change with.

During install of isegCANControl, please make sure to select the correct CAN-Hardware (PCAN-USB, standard setting is PCAN-PCI)

install isegCANControl BEFORE CONNECTING the PCAN-USB Adapter to the computer. Only connect the adapter after you have installed the isegCANControl software, otherwise the automatic driver download may install wrong drivers for this accessory!

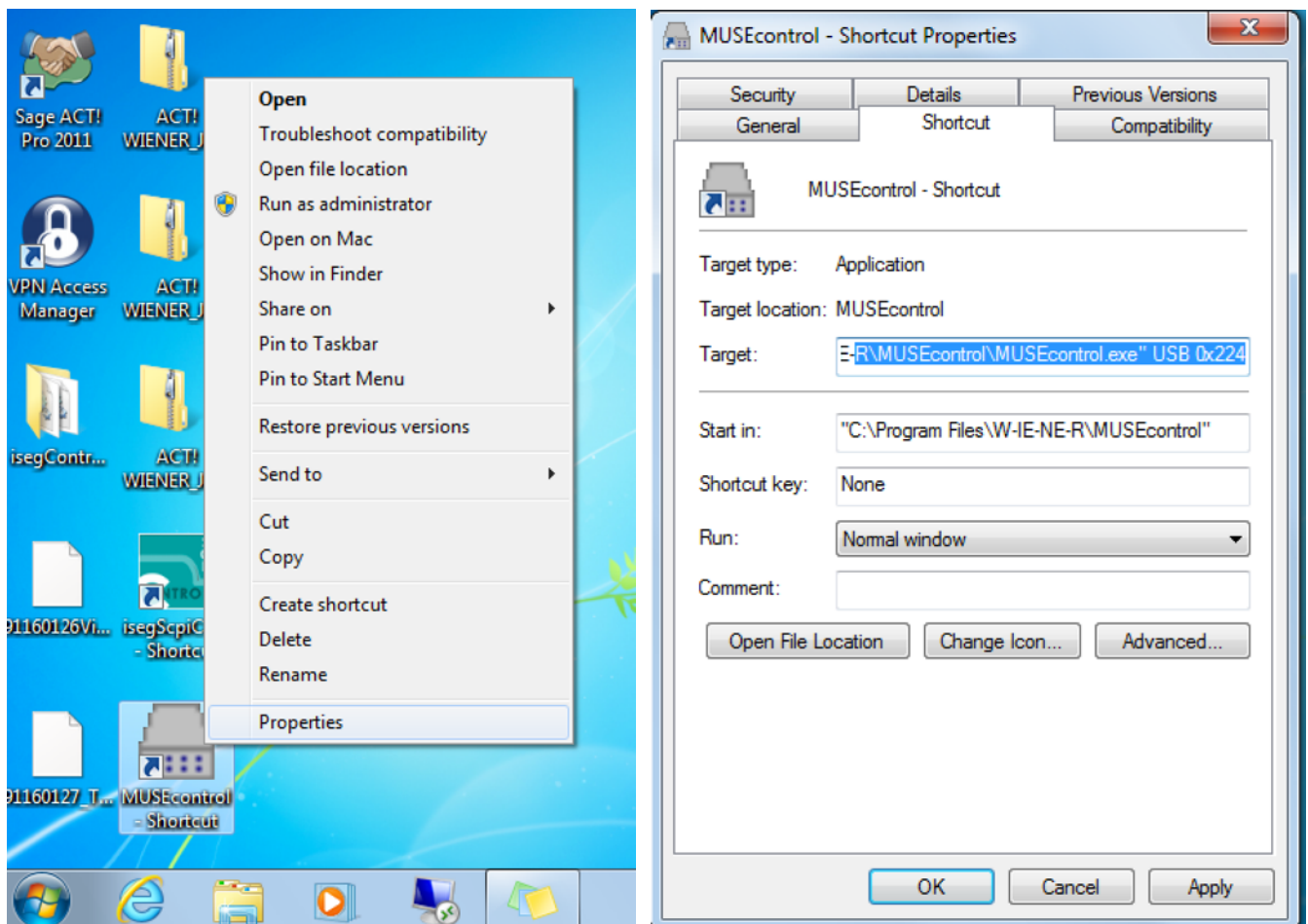
Step 1: Power up the MPOD

Step 2: Connect the control PC with the B-Type USB cable to the MPOD controller

Step 3: To be able to make the necessary setting, MUSE Control has to be started with an additional attachment. For this you have to right click either on the starting icon of MUSE Control directly, or (like in the picture) on the shortcut icon on the desktop. Click “Properties” then. In the line “Target” you will have to add “ USB 0x224” after “MUSEcontrol.exe”, so the line is:

yourdirectory\MUSEcontrol.exe “ USB 0x224

“yourdirectory” has to be replaced with the folder name in which MUSEcontrol was installed on your computer. Also make sure to have the spaces between MUSEControl.exe, USB and 0x224 (see picture, right).



Step 4: Start MUSE Control with a double click on the icon, the following window should open. If there are no Wiener MPV Low Voltage modules inside of the MPOD, it will not show any modules like in this example:

MUSE controlling MPOD channel U4						
File	Switch...	SelectOutput	DVM	OutputConfiguration	OutputCalibration	System
U4	Usense:	3.000V	I: -0.005A	Umodule:	3.165V	Status: ON
U5	Usense:	3.999V	I: -0.004A	Umodule:	4.219V	Status: ON
U6	Usense:	5.001V	I: 0.009A	Umodule:	5.274V	Status: ON
U7	Usense:	5.999V	I: -0.006A	Umodule:	6.330V	Status: ON

Step 5: Click on “System” (marked in the picture above) and then on “Configuration”, the following Window should open. Make sure that there IS A MARK in the field next to “Disable Synchronization” (the example picture is not showing the mark). After setting the mark, click “OK”, close down MUSEcontrol and shut down the MPOD. Disconnect the USB cable.

Configuration

Network

IP Address

192 . 168 . 91 . 85

Subnet Mask

255 . 255 . 255 . 224

Default Gateway

192 . 168 . 91 . 94

HTTP Port Number

80

SNMP Port Number

161

MAC Address (hex)

0050

C22D

C5C0


☒ Ethernet Auto-Negotiation Enabled
 ☐ Ethernet Speed 100M
 ☐ Ethernet Full-Duplex

Other

☐ Ignore Hardware Interlocks

First LV Slot

0

☐ Disable Synchronisation
 

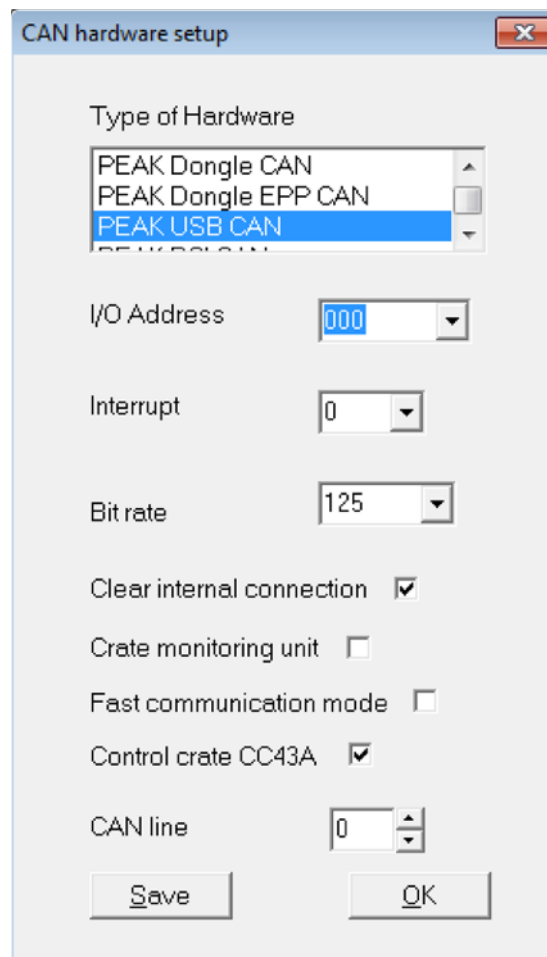
☐ Channels Switch On with Main Switch

OK

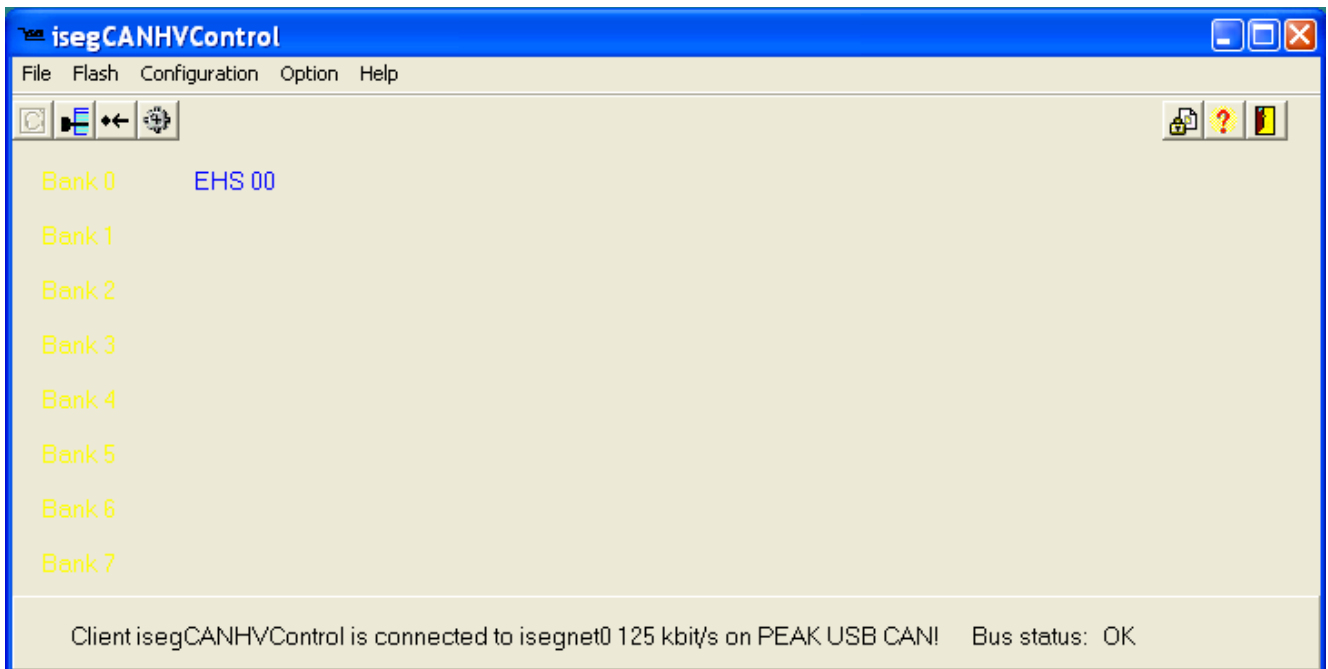
CANCEL

Step 6: Make sure the MPOD is OFF (best disconnect the power cable). Connect the MPOD Backplane Adapter directly to the backplane of the MPOD. Be very careful that the orientation of the MPOD Backplane Adapter is correct and that no PINs are twisted. DO NOT USE FORCE to put in the adapter. After correct insertion of the MPOD Backplane Adapter, power up the MPOD again.

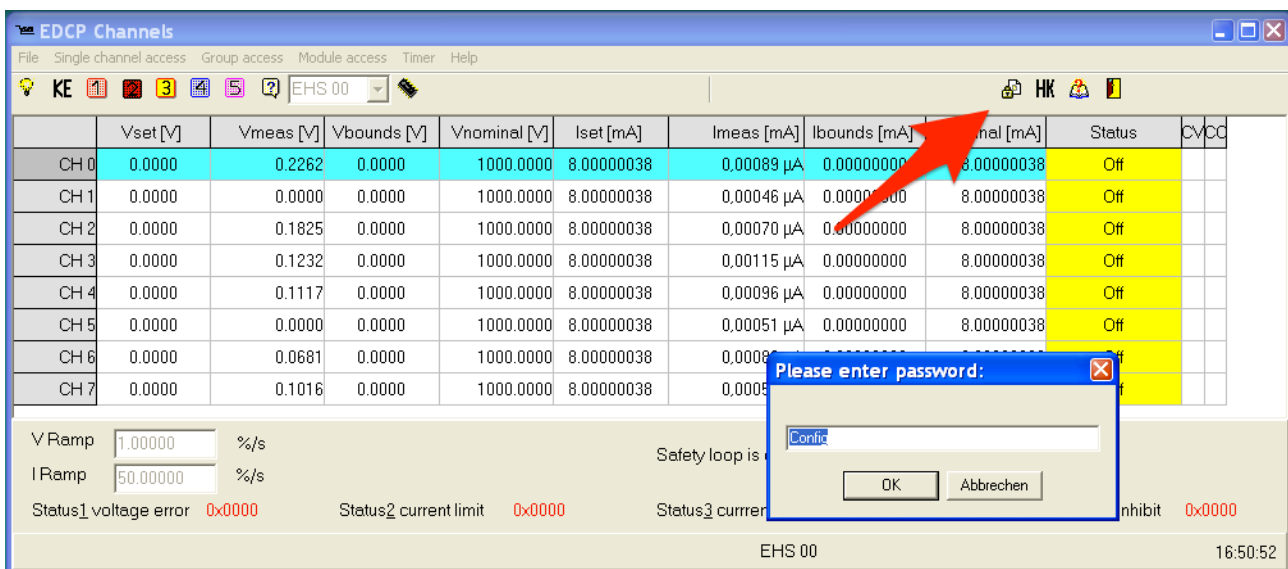
Step 7: Connect the D-Sub 9 connector of the MPOD Backplane Adapter to the PCAN-USB Adapter. Before connecting the PCAN-USB to your PC, make sure that isegCANControl is installed and the correct CAN-Hardware was chosen during the installation (PCAN-USB instead of PCAN-PCI). If you are sure everything is correct, connect the PCAN USB to the PC and start isegCANControl with a double click on the icon. Also choose 250 kbit/s in the field "Bit rate" (in the picture the bit rate is set to 125). Click "Save".



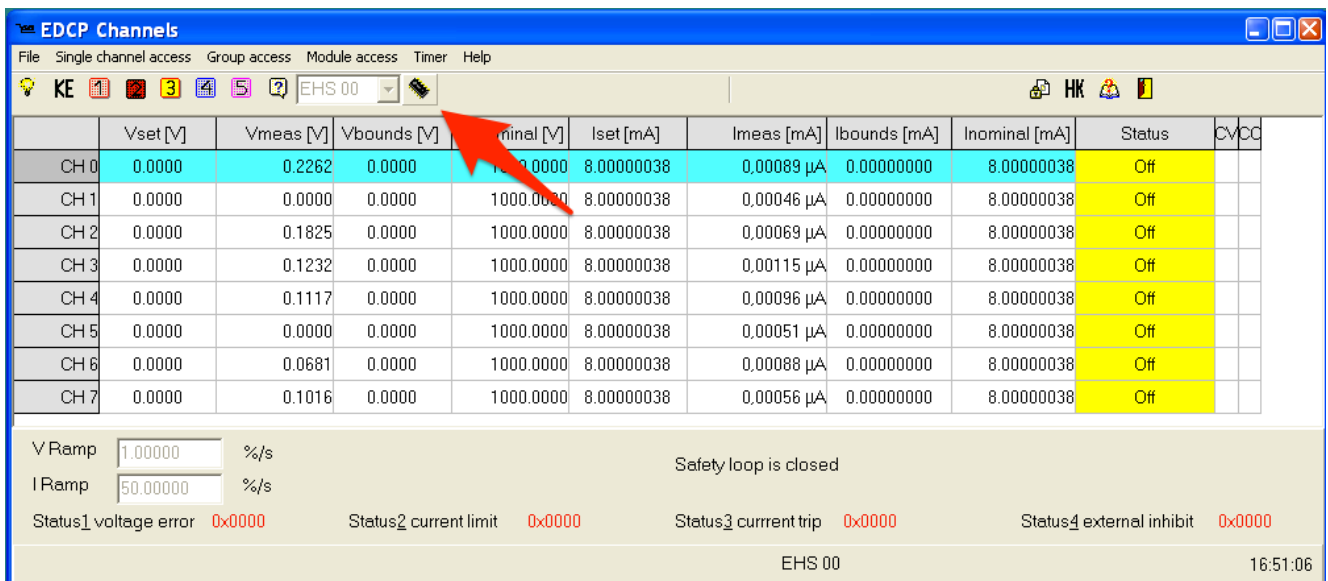
Step 8: The following Window should open. If all settings are correct, you should be able to see at least one module (in the example in the picture the module is labeled with “EHS 00”. With a double click on the module, another window for this specific module should open. If you want to change the Bit rate for several modules, the following process has to be done for every single module (Step 9 to 11).



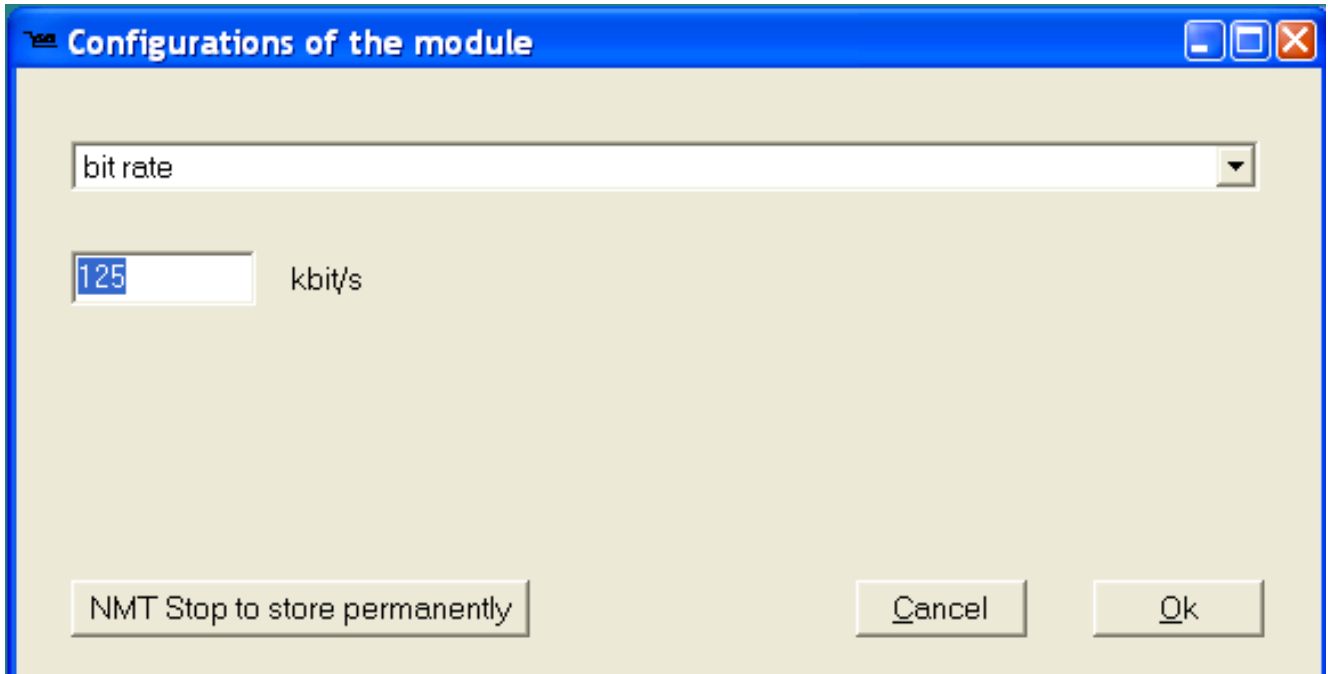
Step 9: click on the icon showing a lock in the upper right corner (see picture, next to the “HK” icon). A small Window should open showing “Please enter password”:



Step 10: Enter the password “Config” (first letter capital “C”) and press enter. After that, a small icon with the image of a chip should appear next to the module selection window in the upper middle (see picture). Click on this icon.



Step 11: The following Window should open. Choose “bit rate” in the upper field and select “125” in the lower field. Click Ok. If there are several modules, repeat from Step 8.

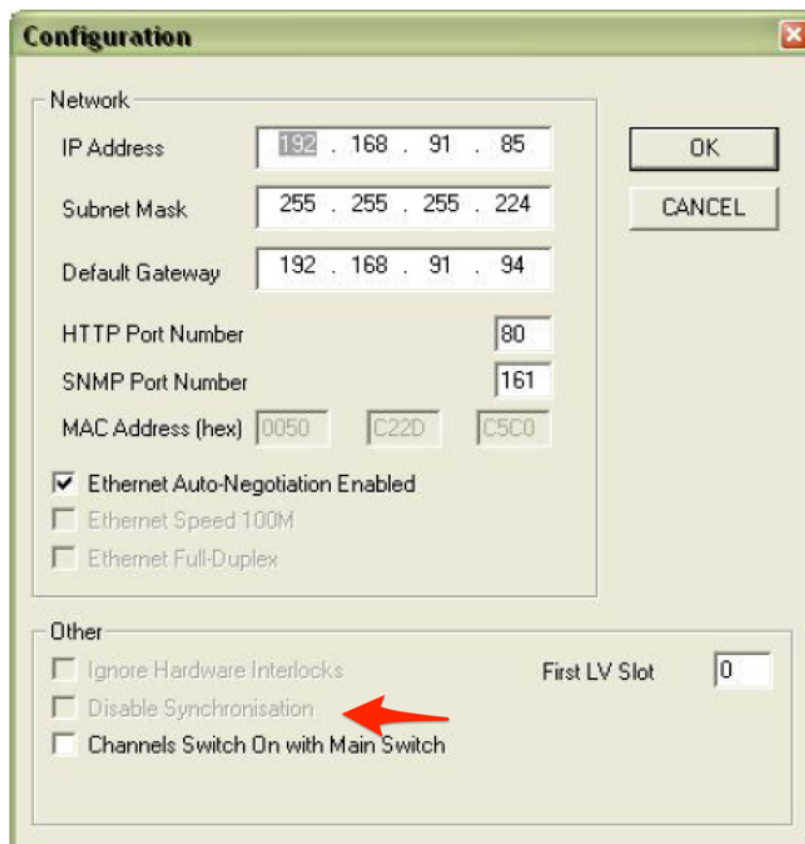


During this process (step 8 to 11) it is possible that there are several error messages coming. If this happens, just click ignore and keep proceeding.

Step 12: Close the software isegCANControl and disconnect the PCAN-USB Adapter

Step 13: Connect the MPOD Controller via USB B-Type cable again and start MUSEcontrol (with the same attachment as before)

Step 14: Go to “System” -> “Configuration” again and erase the mark at “Disable Synchronisation” (it should then be looking like in the picture below again, no mark). After that, click OK, close MUSEcontrol, disconnect the USB cable and shut down the MPOD (best disconnect the power cable).



Step 15: Wait for some seconds before restarting the MPOD. Now it is possible to control the iseg multichannel modules with the standard MPOD controls via SNMP.

In case of any questions do not hesitate to contact us!

Notes: