

Setting Up Think Or Swim for Rule #1 Investors

Setting up ThinkOrSwim (TOS) on your computer will take a little time and learning how to use it will take longer **but it is worth the effort**. TOS has some of the best tools available on the Internet for short term trading and technical analysis....and it's free!

Our recommendation is to set up a temporary ThinkOrSwim (TOS) account to start with – it is easy and you do not have to give much information or fund the account. Then later, after we have given you some training, you can set up an account at TD Ameritrade (which you still do not have to fund) and that will give you permanent access to TOS.

SET UP STEPS

Step #1

Fill out the form at:

<https://papermoney.thinkorswim.com/tos/myAccounts/paperMoneyInterface/paperMoney.jsp>

(If this Internet address does not work for you, try doing a search for: think or swim paper money)



Sign-Up for paperMoney®

*required information

Sign-Up information

Choose a User Name *

Username must be a combination of 8-15 letters and numbers (no special characters).

Choose a Password *

Confirm Password *

Password must be 7-15 characters, using both letters and numbers (at least one of each) and no special characters. Your password cannot be the same as your Username.

Primary Email *

Confirm Primary Email *

First Name *

Middle Name

Last Name *

Country of Citizenship *

UNITED STATES OF AMERICA ▼

[Why isn't my country here?](#)

Country of Residence *

UNITED STATES OF AMERICA ▼

[Why isn't my country here?](#)

Physical Street Address * (No P.O. Boxes or mail drops)

City *

State *

Zip Code *

Primary Phone Number *

() -

Thank you for registering for paperMoney®

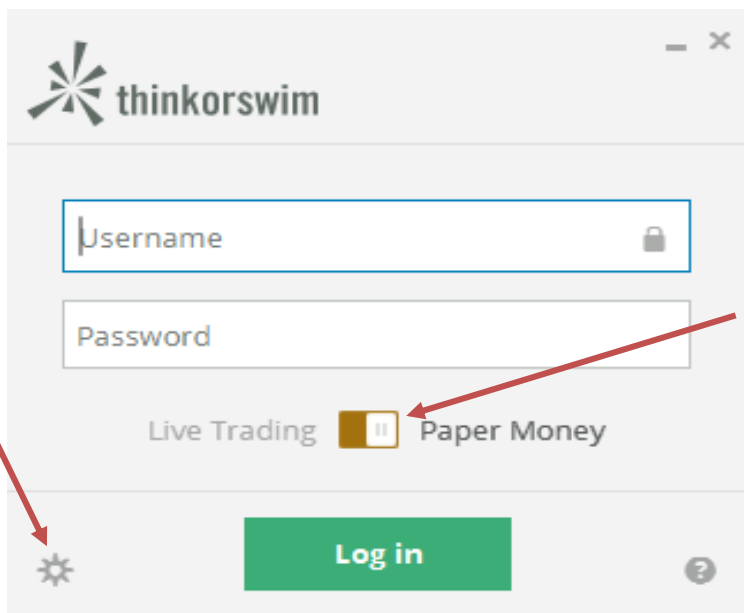
You will receive a confirmation email at the address you provided with a link and instructions to download a "virtual" version of our highly acclaimed trading software. This version does not support actual trading.

Once the download is complete, you'll be able to use paperMoney® to explore our trading application or experiment with a new trading strategy without putting real money on the line.

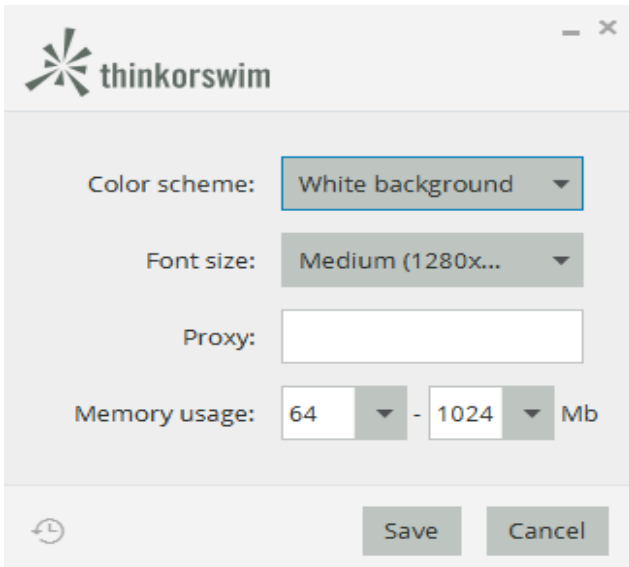
TD Ameritrade, which owns ThinkOrSwim, will send you an email. Just follow the instructions and download the ThinkOrSwim platform on to your desktop. If you need to, call TOS to get help with their web site and trading platform.

Step #2

Before logging into TOS, choose "Paper Money" (instead of "Live Trading") by moving the toggle button to the right. Then click on the settings icon (a gear or sun looking icon) in the bottom left corner of the log-in box.

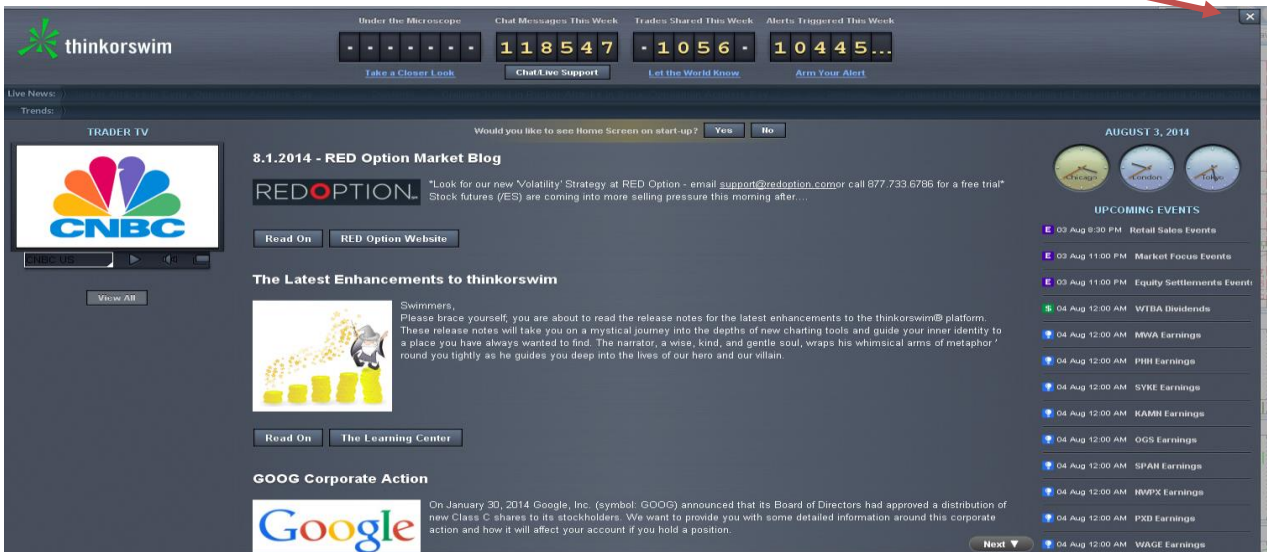


Change the settings to the following (you can always change them back if you don't like them):



Step #3

Log in and close the "Home Screen" by clicking the X in the top left corner.



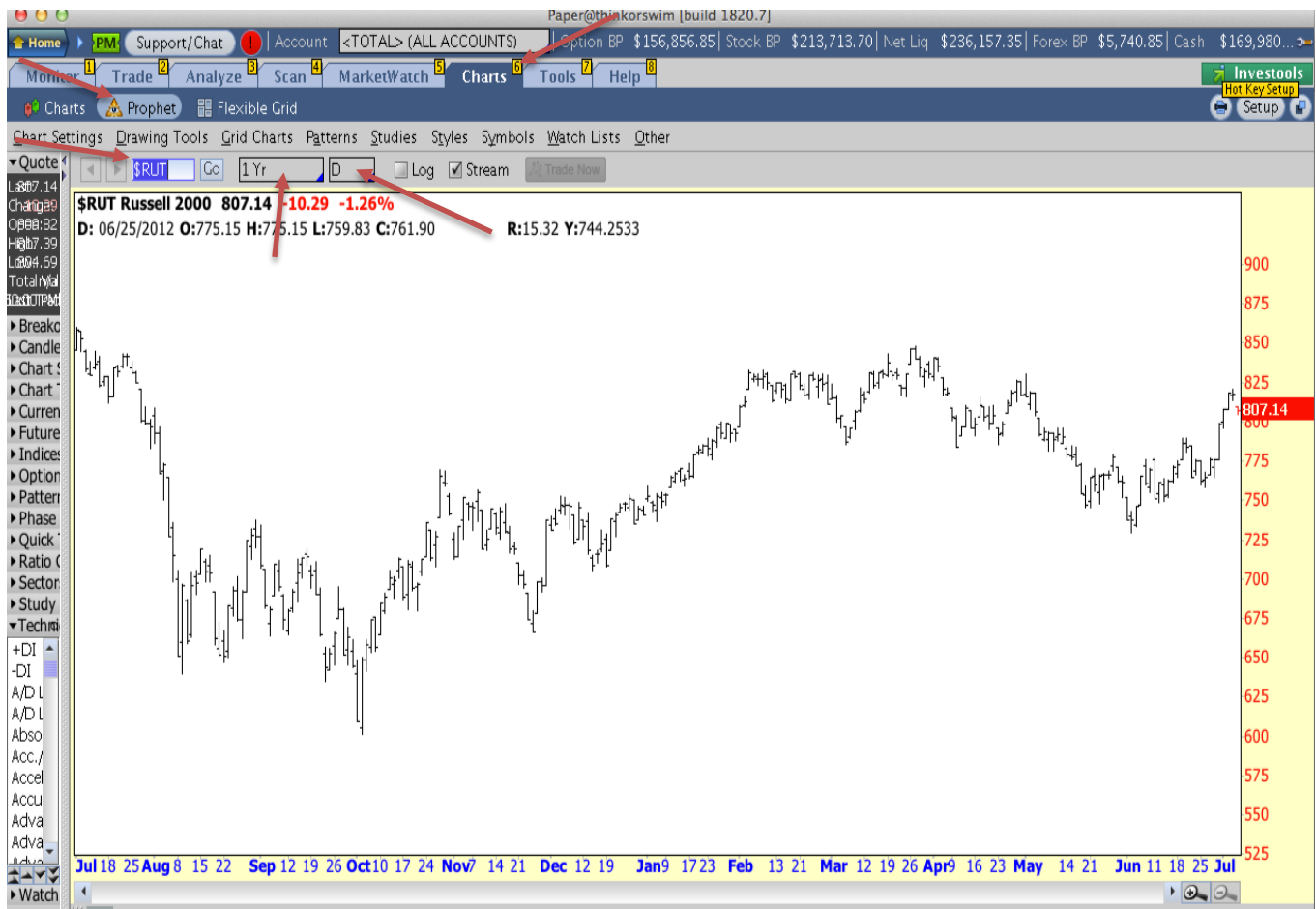
Step #4

Click on the “Charts” tab and then on the “Prophet” sub tab.

Put a stock symbol in the blank box and click “Go.”

Click inside the time box (next to “Go”) and choose one year (1 Yr).

Click inside the next box and choose one day (D).



Step #5

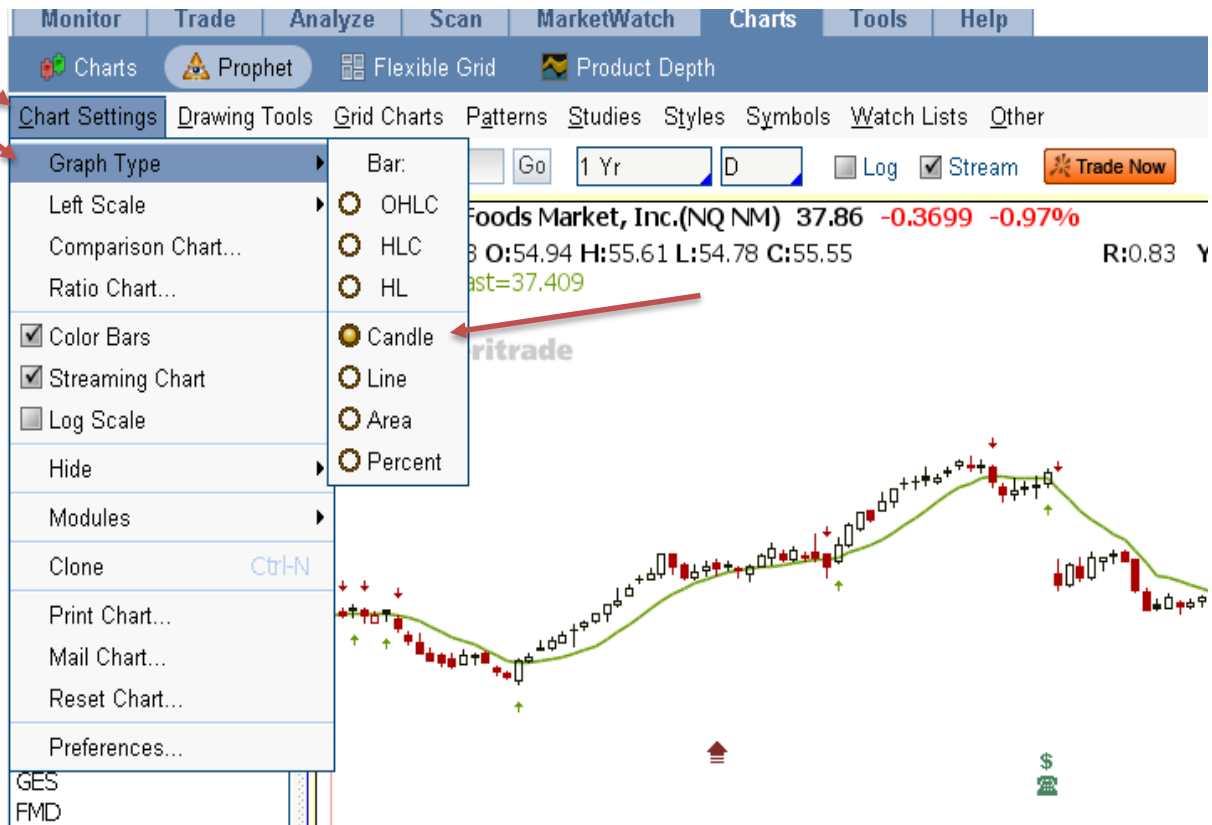
Chart settings:

Step 1. Select, "Chart Settings" in the upper left hand corner (underneath the "Charts" sub tab).

Step 2. Change the Graph Type to, "Candle."

Step 3. Click on, "Color Bars."

Step 4. Click on, "Streaming Chart."



Select, "Hide" and click on, "Grid Lines."

The screenshot displays a trading software interface with the following elements:

- Menu Bar:** Monitor, Trade, Analyze, Scan, MarketWatch, Charts, Tools, Help.
- Sub-Menus:** Charts, Prophet, Flexible Grid, Product Depth.
- Chart Settings:** Graph Type, Left Scale, Comparison Chart..., Ratio Chart..., Color Bars (checked), Streaming Chart (checked), Log Scale (unchecked).
- Chart Data:** WVFM Whole Foods Market, Inc.(NQ NM) 37.86 -0.3699 -0.97%. Date: 08/05/2013. Open: 54.53, High: 55.56, Low: 54.32, Close: 55.21. Volume: 1.24. A green line indicates the A_BS(10) moving average with a value of last=37.409.
- Settings Menu:** Hide (selected), Modules, Clone (Ctrl-N), Print Chart..., Mail Chart..., Reset Chart..., Preferences...
 - Drawn Items (Ctrl-D)
 - Events (Ctrl-E)
 - Expansion (Ctrl-F)
 - Grid Lines (checked, Ctrl-G)
 - Price
 - Studies (Ctrl-S)
 - Volume
 - Volume Pane (Ctrl-Space)
- Chart:** A candlestick chart showing price movement over time, overlaid with a green moving average line. The Ameritrade logo is visible in the background.

Step #6

To draw lines on the chart, click on an icon at the bottom of the chart.



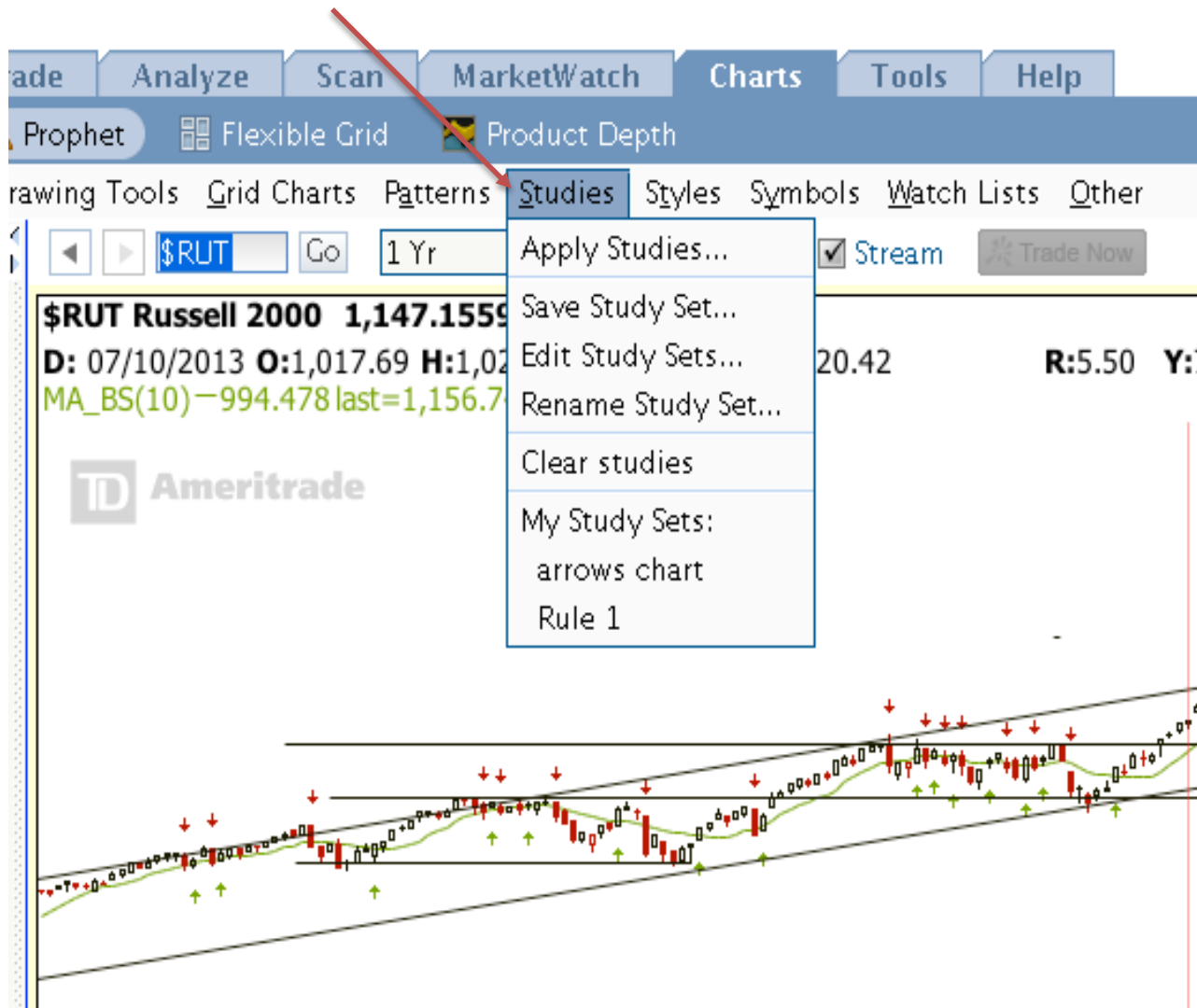
In Prophet, select grid lines to change the scaling of your chart if you need to. The second arrow pointing to the horizontal line is what you can use to draw floors and ceiling on the chart. The diagonal line icons are for drawing trend lines.

Left click once to begin the line. Move your cursor across the page and when you have the line where you want it, left click a second time to set the line.

Once a line is drawn, you can right click on the line and options for manipulating the line become available.

Step #7

To add the technical indicators to your Prophet Chart, click on the “Studies” sub tab and then click on “Apply Studies.”

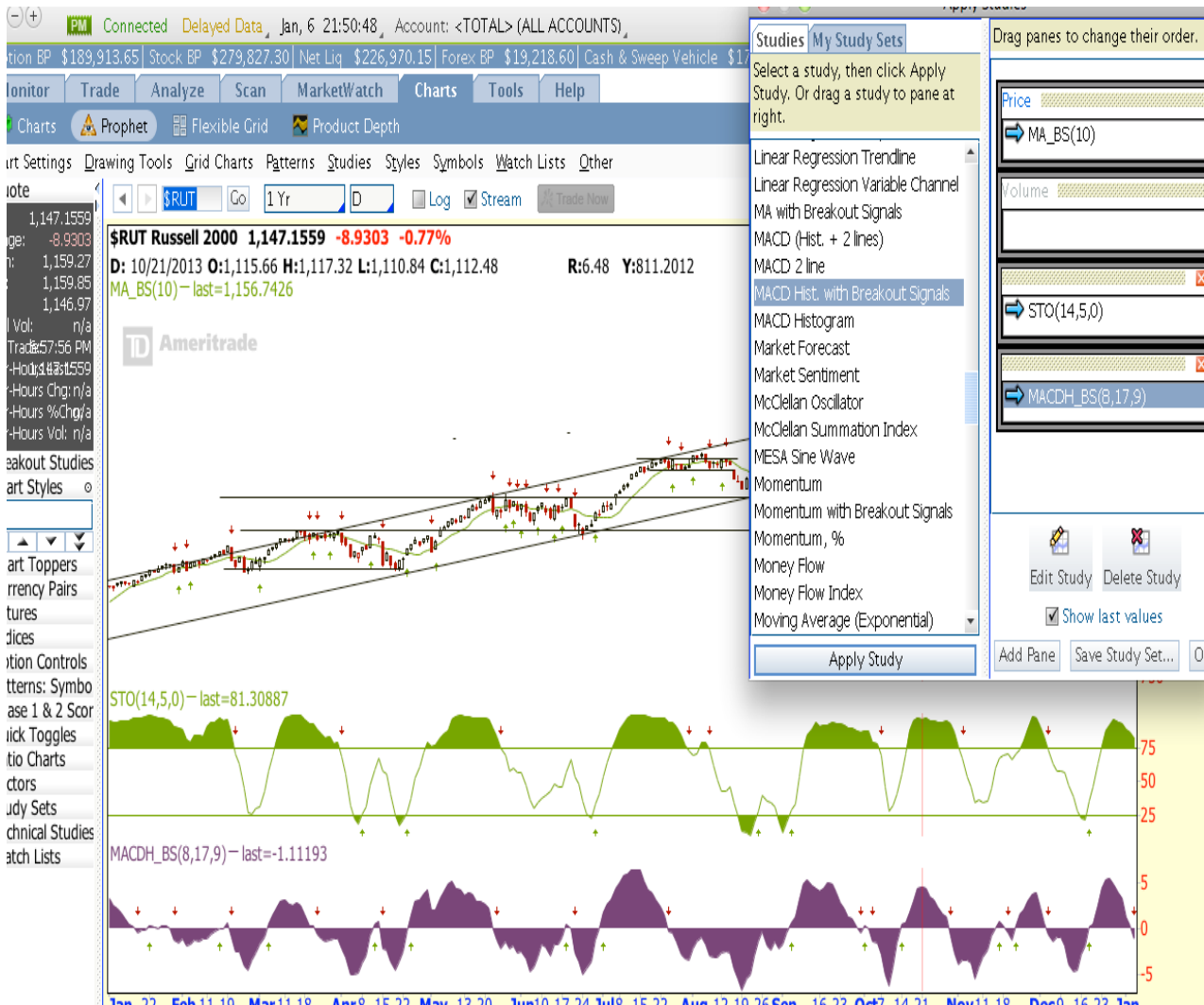


Choose the following studies and give them the following settings:

MA Breakout Signals (Moving Average Breakout Signals): 10

MACD Hist. Breakout Signals: 8, 17, 9

Stochastics with Breakout Signals: 14, 5, 0



To edit the studies, click on the study you want and then click on “Edit Study.”
 Change the settings to the Rule #1 recommended numbers (on the previous page).

The screenshot displays the Ameritrade trading interface. The main window shows a candlestick chart for the \$RUT Russell 2000 index. The current price is 1,147.1559, with a change of -8.9303 (-0.77%). The chart includes a MACD study with a green signal line and red histogram bars. A vertical red line is drawn at the current price. The 'Study Editor' dialog box is open, allowing the user to modify the 'MACD Hist. with Breakout Signals(MACDH_BS)' study. The settings are as follows:

- Fast Period: 8
- Slow Period: 17
- Signal Period: 9
- MACDH_BS:
- fill:
- Show Trade Signals:

The 'Apply Study' button is highlighted at the bottom of the dialog box. The background chart shows a price range from approximately 775 to 925.

The Prophet Chart should look something like this after making all the settings.



CONCLUSION:

There is a brief video on our web site, www.ruleoneinvesting.com, that shows how to create the technical indicator (studies) settings on TOS Prophet. To find it, put a stock symbol into the search box on our web site and that will take you to the STOCK AT A GLANCE page. Look to the left side of the page for the QUICK LINKS box. In that box, look for ARROWS CHART and click on it. A video will start up that helps explain the process.

Everyone struggles with using TOS to start with. Don't get discouraged. This is a very valuable tool for making money and worth the time to learn how to use it.