

# Stewart Hall

## BUILDING INFO

Stewart Hall houses students on six floors, with a study room and kitchenette on each. The spacious common area on the first floor is accompanied by a vending area for residents. A laundry facility is also located on the first floor. See page 2 for a floorplan.

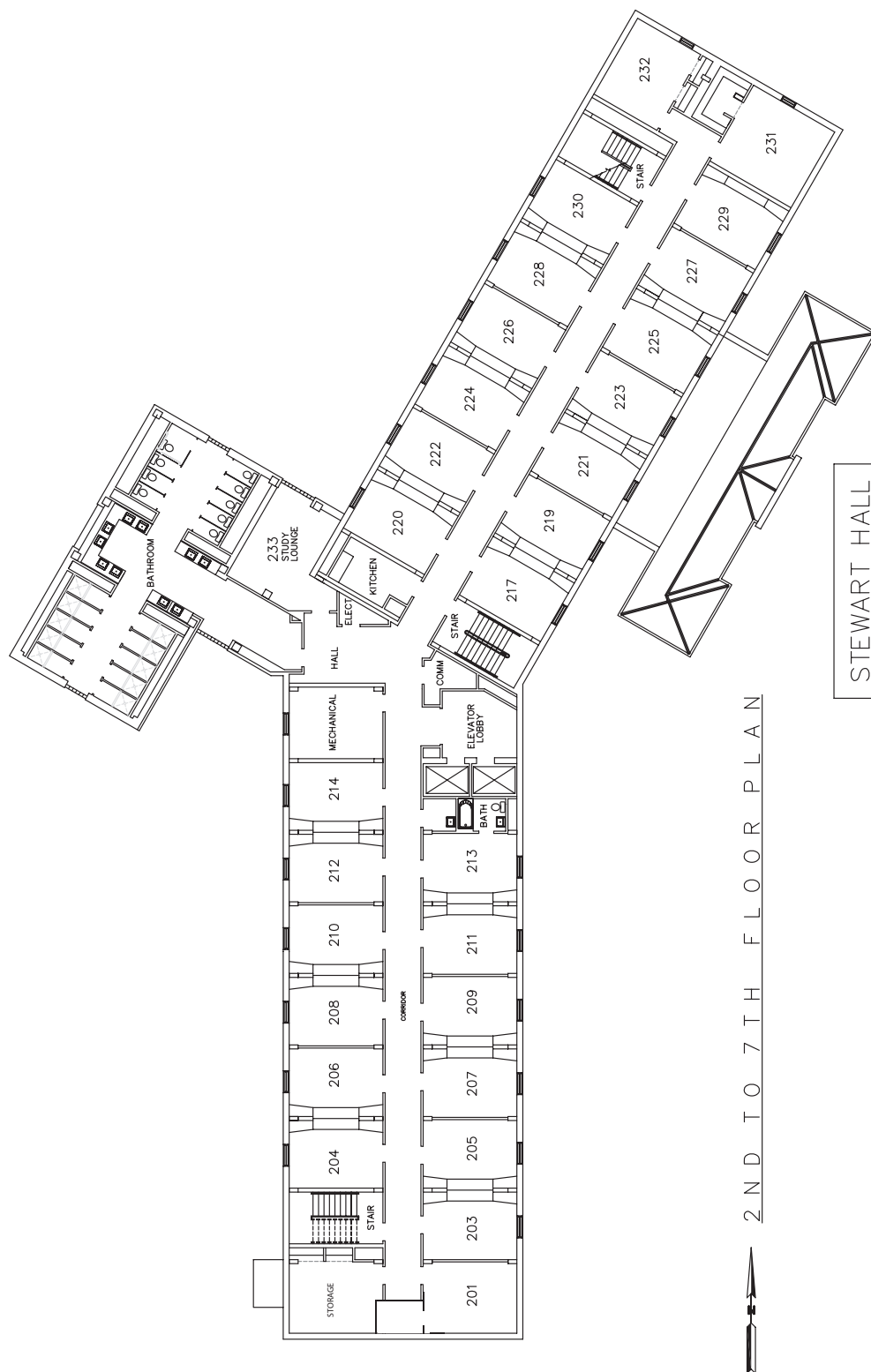
## ROOM INFO

- Room measurements are included on page 3-7.
- One cable outlet and two internet outlets are available in each room. Basic cable, internet, and wi-fi services are included.
- Windows come with blinds. Decorative curtains can be placed on the outside of windows by using rods placed in large 3M Command Hooks.
- Ceilings are approximately 110" on all floors.
- Floors are vinyl. Carpets are available through Residence Hall Carpets: ocm.com.
- Linens and towels are available through the Ole Miss Bookstore: olemissbookstore.com.

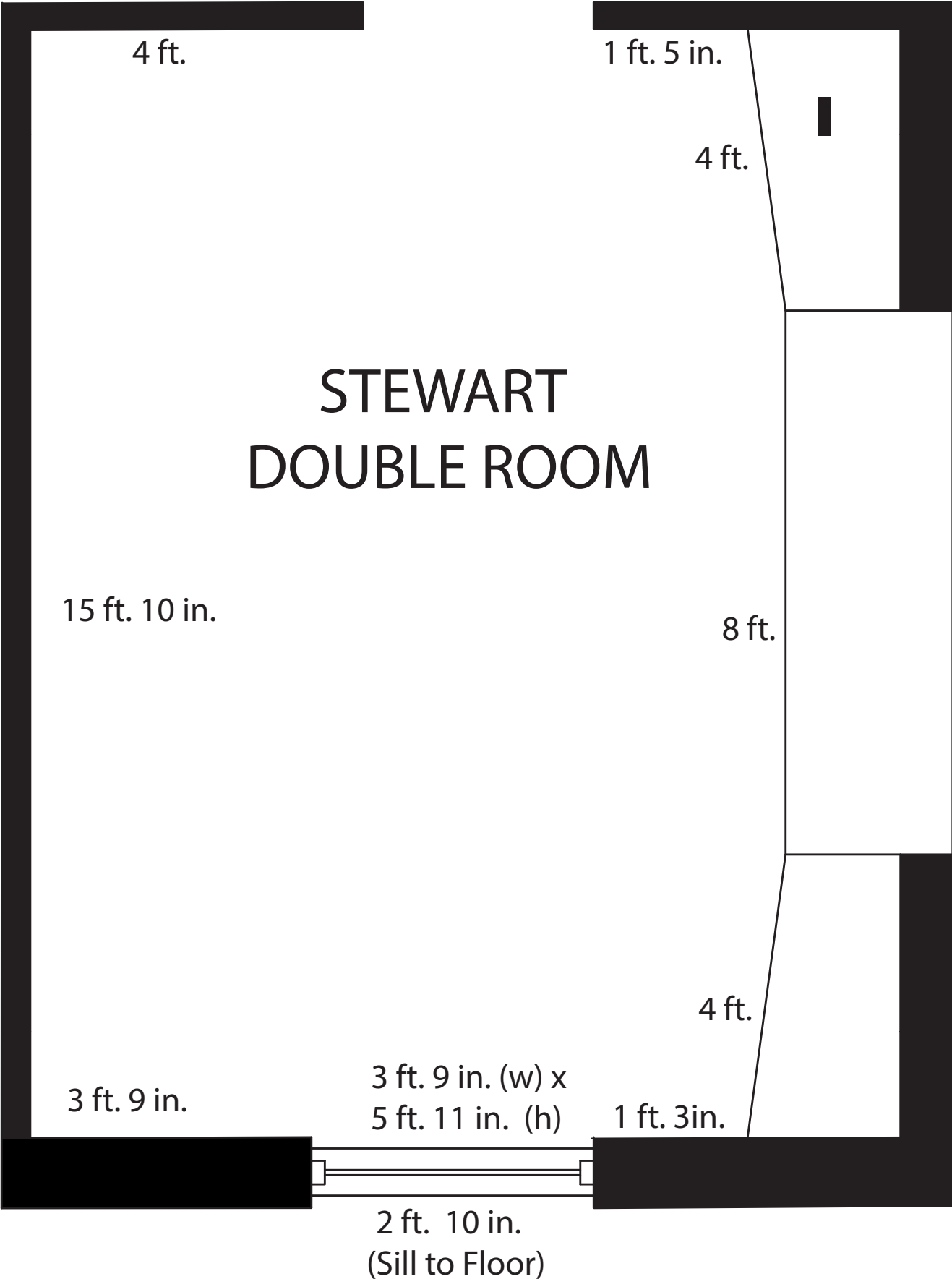
## FURNITURE INFO

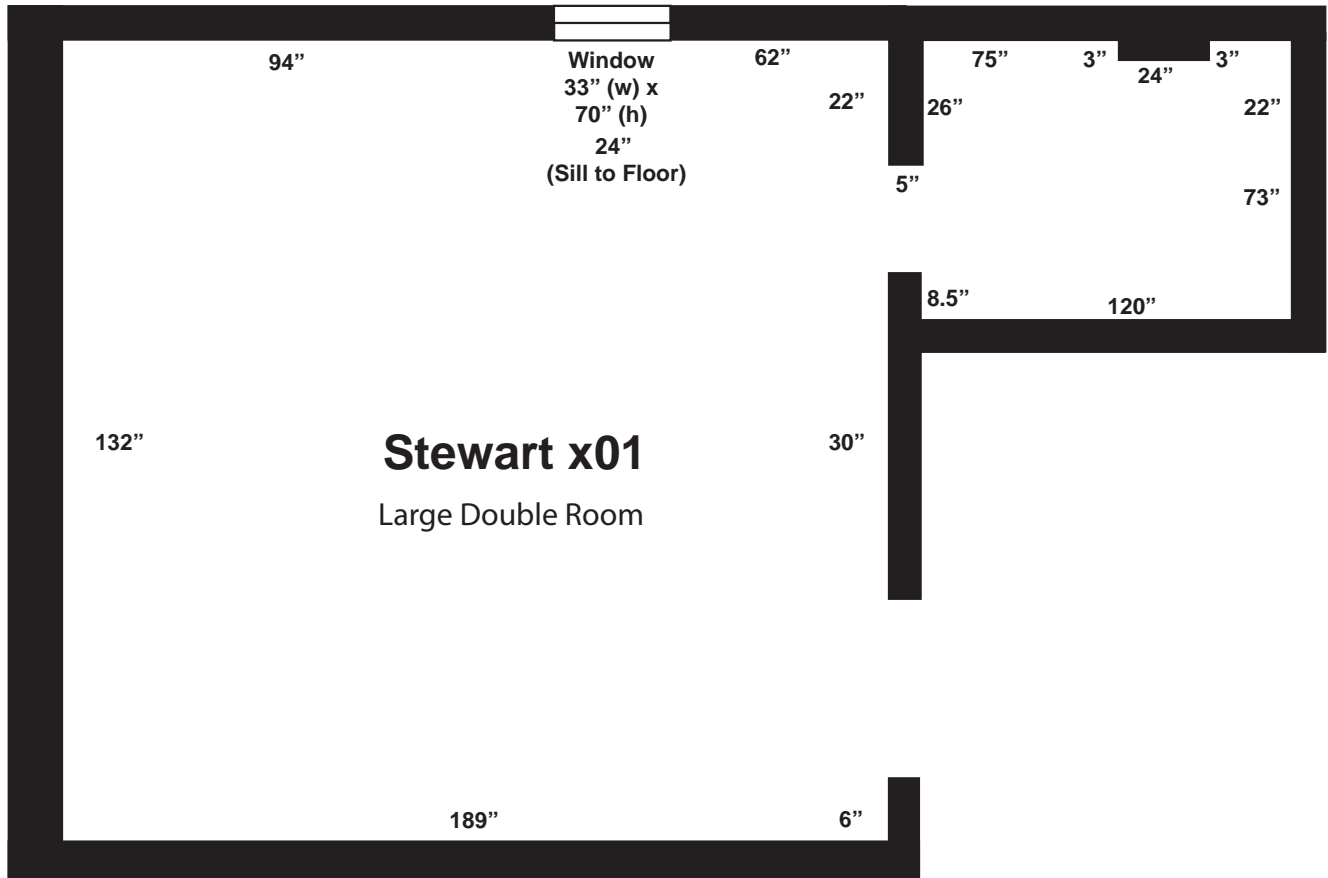
- Furniture pictures and measurements are available on pages 8-10. All measurements are approximate.
- Each resident room includes two sets of furniture, one for each resident. A set of furniture includes a twin extra-long bed with mattress, a desk chair, and a built-in furniture unit that includes a closet, desk, drawers, and shelves.
- Furniture (except desk chair) is made of wood with a dark finish.
- Student housing reserves the right to replace furniture as needed. Replacement pieces may vary.

For additional photos, visit our Facebook page.



STEWART HALL  
STUDENT HOUSING  
UNIVERSITY, MISSISSIPPI

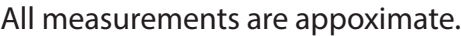


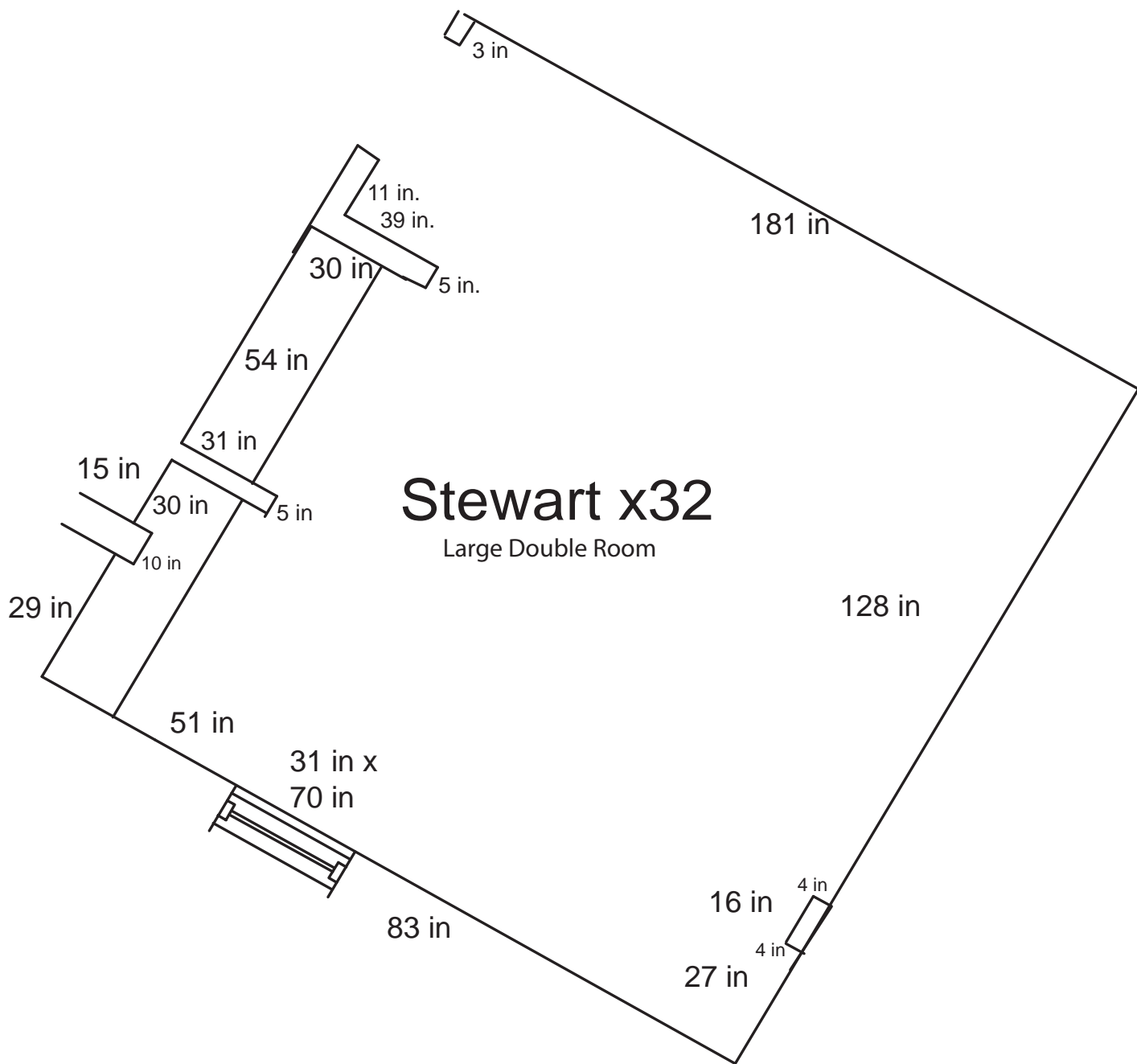


All measurements are approximate.



page 5





All measurements are approximate.

**BUILT-IN FURNITURE (DOUBLE ROOMS EXCEPT x01, x13, x31, x32)**





**MOVABLE FURNITURE FOR x01, x13, x31, x32 ROOMS**



**DRESSER**

Height ~ 30"   Width ~ 30"   Depth ~ 25"  
x01, x13, x31, x32 Rooms



**DESK**

Height ~ 30"   Width ~ 40"   Depth ~ 25"  
x13 Room



**NIGHTSTAND**

Height ~ 30"   Width ~ 17"   Depth ~ 23"  
x01, x31, x32 Rooms



**DESK**

Height ~ 30"   Width ~ 26"   Depth ~ 23"  
x01, x31, x32 Rooms



#### **BED (HEIGHT ADJUSTABLE)**

Headboard, Footboard, & Frame: Height ~ 40" Width ~ 40" Length ~ 85"

Mattress: Length ~ 80" Width ~ 35"

Beds can be raised to approximately 30" off the ground and can be lowered in 3" increments to approximately 3" off the ground. Beds will be raised to mid height for move in. Beds can be raised and lowered with a rubber mallet by the student. Rubber mallets are available for checkout at the front desk.



#### **BED (HEIGHT ADJUSTABLE, LOFT INCLUDED)**

Lofts, ladders, and safety rails can be rented from Lofts, LLC: [loftsinc.com](http://loftsinc.com).