

Stock Catalog



Warehouse Catalog - Table of Contents

Access Doors	Page 18
Actuators	Page 4
Chicago Code Inline Fans	Page 17
Controls	Page 4
Dampers	Page 9
Diffusers	Pages 5-6
Door / Transfer Grilles	Page 13
Duct Fittings	Pages 24-25
Eggcrate Grilles	Page 13
Fans - Broan	Page 15
Fans - Twin City	Page 16
Filter Return Grille	Page 13
Flexible Duct - Flexmaster (<i>limited stock</i>) & Stretchflex	Pages 20-21
Fusible Links	Page 18
Hot Water Reheat Coils	Page 3
Light Shields	Page 8
Linear Slot Diffusers & Plenums	Page 8
Linear Floor Registers	Page 11
Pattern Diffusers	Page 7
Plenum Slot Diffusers	Page 8
Return Grilles	Page 12
Return Registers	Page 11
Roof Curbs	Page 17
Round to Round Adapters	Page 14
Sensors	Page 4
Slip-Fit Connections - Semco Stock - <i>Limited Stock</i>	Pages 22-23
Square to Round Adapters	Page 14
Specialty Grilles	Page 13
Supply Registers	Page 10
Surface Mount Frames	Page 9
Terminal Units (Nailor)	Page 3
Terminal Units (Tuttle and Bailey) - <i>Limited Stock</i>	Page 19
Touchup Paint (Nailor)	Page 9
Thermostats	Page 4
Transformers	Page 4
UNI / UNI2 Blankoffs	Page 6
UVDI	Page 19
VAV Diffusers	Page 7
Warehouse Cross Reference	Page 2

Important Notes:

Call Us For Pricing & Availability! 630-833-3838

All stock items are subject to quantity verification before an order can be processed.

Please verify quantities!

Freight from warehouse stock to recipient is NOT included.

Taxes are NOT included.

Sizes listed are Width" x Height" unless noted otherwise.

Existing Tuttle & Bailey GRD's may be substituted for Nailor GRD's unless specified "do not substitute"

Air Distribution

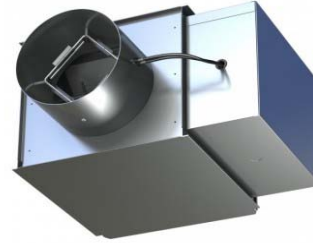
<u>Nailor</u>	<u>Tuttle and Bailey</u>	<u>Titus</u>	<u>Metalaire</u>	<u>Price</u>	<u>Description</u>
4275	RON	D-75 or D-100	BDS	VCR	Round Opposed Blade Damper, Steel
4302	PTL	PXP	SPRTB	PFRF	Return Panel, Perforated Diffuser, Steel
4320	PPRLD	PAS	7500	PDF	Perforated Supply Diffuser, Adjustable Discharge, Steel
4360	PRRLD	PAR	7500R	PDDR	Perforated Return Diffuser, Steel
5010	CAA3	ML39	6100	SDS	Linear Slot Diffuser, Aluminum
4320CB	PV	PCS	7600	PDC	Perforated Supply Diffuser, Curved Blade, Steel
51EC	CRE500	50F	CC5	80	Eggcrate Return Grille, Aluminum
51FB45	A70DFB	350FL-FB	RHEF	630FF	Filter Return Grille, Aluminum
5710I	SVPS	TBDI-80	PD	TBDI4	Plenum Slot Diffuser, Internally Insulated, Steel
6145H	T70D	350RL	RHEF	630FF	Return Air Grille, Steel
6145H-O	T77D	350RL-AGI5	RHD	530	Return Air Register, Steel
61DV-O	T647	300RS-AGI5	RHF	520D	Double Deflection Supply Register, Steel
6500-IV	RC-40	TDV	5000-IV	SMX	Pattern Ceiling Diffuser w/ Induction Vanes, 4-way, Steel
6500	ML44	TDC	5000	SMD	Pattern Ceiling Diffuser, 4-way, Steel
RNR	P3	TMR	3000	RCDE	Round Ceiling Diffuser, 3-Cones, Steel
RNS	1300L	TMS	5700	SCD	Louvered Face Diffuser, 4-Cones, Steel
UNI2	T1100	OMNI	5750	SPD	Square Plaque Face Diffuser, Steel

Terminal Units

<u>Nailor</u>	<u>Tuttle and Bailey</u>	<u>Titus</u>	<u>Metalaire</u>	<u>Price</u>	<u>Description</u>
D3001	SDV	DESV	TH-500	SDV	Single Duct Terminal Unit - Cooling Only
D30RW	SDV	DESV	TH-500	SDV	Single Duct Terminal Unit w/ Hot Water Reheat Coil

Fans

<u>Twin City</u>	<u>PennBarry</u>	<u>Broan</u>	<u>Greenheck</u>	<u>Carnes</u>	<u>Description</u>
BCRD	DXB	N/A	GB	VEBK	Centrifugal Roof Exhaust Fan, Downblast, Belt Drive
DCRD	DX	N/A	G	VEDK	Centrifugal Roof Exhaust Fan, Downblast, Direct Drive
BSI	SX-B	N/A	BSQ	VIBK	Square Inline Centrifugal Fan, Belt Drive
DSI	SX-D	N/A	SQ	VIDK	Square Inline Centrifugal Fan - Direct Drive
T	Z	L100	SP	VCDB	Ceiling Exhaust Fan - 100 CFM
T	Z	L150	SP	VCDB	Ceiling Exhaust Fan - 150 CFM
T	Z	L200	SP	VCDB	Ceiling Exhaust Fan - 200 CFM
T	Z	L250	SP	VCDB	Ceiling Exhaust Fan - 250 CFM
T	Z	L300	SP	VCDB	Ceiling Exhaust Fan - 300 CFM
T	Z	L400	SP	VCDB	Ceiling Exhaust Fan - 400 CFM
T	Z	L500	SP	VCDB	Ceiling Exhaust Fan - 500 CFM
T	Z	L700	SP	VCDB	Ceiling Exhaust Fan - 700 CFM
T	Z	L900	SP	VCDB	Ceiling Exhaust Fan - 900 CFM
T	Z	L1500	SP	VCDB	Ceiling Exhaust Fan - 1,500 CFM



Nailor Single Duct Terminal Units

Manufacturer	Model	Size	Description
Nailor	D3001	6"	Single Duct Terminal Unit, Cooling Only (Controls By Others)
Nailor	D3001	8"	Single Duct Terminal Unit, Cooling Only (Controls By Others)
Nailor	D3001	10"	Single Duct Terminal Unit, Cooling Only (Controls By Others)
Nailor	D3001	12"	Single Duct Terminal Unit, Cooling Only (Controls By Others)
Nailor	D3001	14"	Single Duct Terminal Unit, Cooling Only (Controls By Others)
Nailor	D3001	16"	Single Duct Terminal Unit, Cooling Only (Controls By Others)
Nailor	D3001	24" x 16"	Single Duct Terminal Unit, Cooling Only (Controls By Others)

Noted:

Terminal Units Include; Bottom Access Door, Dust-tight Controls Enclosure, & Steri-liner Lining



Hot Water Reheat Coils

Manufacturer	Model	Size	Description
Nailor	V30HWC106	4", 5", 6"	1 Row Hot Water Reheat Coil, 10" x 10"
Nailor	V30HWC108	7", 8"	1 Row Hot Water Reheat Coil, 12" x 12.5"
Nailor	V30HWC110	9", 10"	1 Row Hot Water Reheat Coil, 14" x 12.5"
Nailor	V30HWC112	12"	1 Row Hot Water Reheat Coil, 18" x 12.5"
Nailor	V30HWC114	14"	1 Row Hot Water Reheat Coil, 24" x 12.5"
Nailor	V30HWC116	16"	1 Row Hot Water Reheat Coil, 28" x 12.5"
Nailor	V30HWC124	24" x 16"	1 Row Hot Water Reheat Coil, 38" x 18"
Manufacturer	Model	Size	Description
Nailor	V30HWC206	4", 5", 6"	2 Row Hot Water Reheat Coil, 10" x 10"
Nailor	V30HWC208	7", 8"	2 Row Hot Water Reheat Coil, 12" x 12.5"
Nailor	V30HWC210	9", 10"	2 Row Hot Water Reheat Coil, 14" x 12.5"
Nailor	V30HWC212	12"	2 Row Hot Water Reheat Coil, 18" x 12.5"
Nailor	V30HWC214	14"	2 Row Hot Water Reheat Coil, 24" x 12.5"
Nailor	V30HWC216	16"	2 Row Hot Water Reheat Coil, 28" x 12.5"
Nailor	V30HWC224	24" x 16"	2 Row Hot Water Reheat Coil, 38" x 18"



Actuators / Controls / Thermostats / Transformers

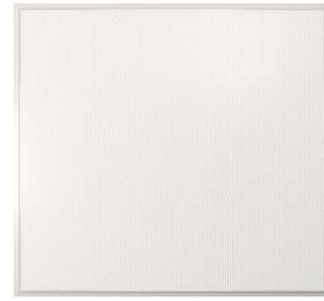
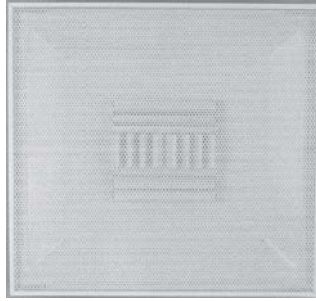
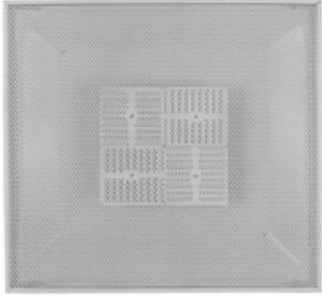
Manufacturer	Model	Size	Description
Nailor	CP-1P3	All	Pneumatic Cooling Only, D.A./N.O. VAV Control Package, Thermostat By Others
Nailor	CP-2P3	All	Pneumatic Cooling Only, R.A./N.O. VAV Control Package, Thermostat By Others
Nailor	CP-1EL	All	Analog Electronic Cooling Only VAV Control Package
Hoffman	CP-160	All	Analog Electronic Cooling Only VAV Control Package
Hoffman	CP-167	All	Analog Electronic Cooling With Reheat VAV Control Package
Manufacturer	Model	Size	Description
Nailor	B3-017D	n/a	Pneumatic Rotary Damper Actuator, 5-10 PSI (V1010)
Nailor	B3-005	n/a	Pneumatic Reset Volume Controller, 0 to 1" Range, 8 PSI Start (V1024)
Nailor	B3-185	n/a	Analog Electronic VAV Controller/ Actuator, (CSP-5002B)
Nailor	B3-191	n/a	Analog Room Thermostat, DA, Single Temp Setpoint, (CTE-5101-10)
Nailor	H1-274	n/a	Terminal Block, 4 Position, Screw Terminal Style
Nailor	H1-711	n/a	Ground Lug
Nailor	H1-669	n/a	120/24V Transformer, 40VA
Nailor	H1-673	n/a	24/24V Transformer, 40VA
Manufacturer	Model	Size	Description
Hoffman	200-3B	n/a	Analog Electronic VAV Flow Controller Sensor & Logic w/ Track (Cooling Only)
Hoffman	202-10-1	n/a	Interface Card for up to 3 Stages of Heating
Hoffman	207-2W	n/a	Thermostat, White, Hidden 65-85° F Setpoint Range, Low Voltage
Hoffman	241-2	n/a	Damper Actuator, 24V
Hoffman	Enclosure	All-CP-160/167	Control Enclosure for CP-160 & CP-167
Manufacturer	Model	Size	Description
Honeywell	T651A3018	n/a	Medium Duty Line Voltage Heat-Cool Thermostat

Notes:
 All Terminal Unit Controls are Pneumatic or Analog Only.
 CP-1P3 & CP-2P3 Includes; Actuator (B3-017D) & Controller (B3-005)
 CP-1EL Includes; Controller/Actuator (B3-185), Thermostat (B3-191), Terminal Block (H1-274), & Transformer (H1-669)
 CP-160 Includes; Actuator (241-2), Controller (200-3B), Thermostat (207-2W), & Transformer (H1-669)
 CP-167 Includes; Actuator (241-2), Controller (200-3B), Reheat Card (202-10-1), Thermostat (207-2W), & Transformer (H1-669)



Stainless Steel Sensors

Manufacturer	Model	Size	Description
J&L Manufacturing	ALSS	4"	Stainless Steel Sensor, 4" Long
J&L Manufacturing	ALSS	5"	Stainless Steel Sensor, 5" Long
J&L Manufacturing	ALSS	6"	Stainless Steel Sensor, 6" Long
J&L Manufacturing	ALSS	8"	Stainless Steel Sensor, 8" Long
J&L Manufacturing	ALSS	10"	Stainless Steel Sensor, 10" Long
J&L Manufacturing	ALSS	12"	Stainless Steel Sensor, 12" Long
J&L Manufacturing	ALSS	14"	Stainless Steel Sensor, 14" Long
J&L Manufacturing	ALSS	16"	Stainless Steel Sensor, 16" Long



Diffusers

<u>Manufacturer</u>	<u>Model</u>	<u>Size</u>	<u>Description</u>
Nailor	4320	6"	12"x12" Module, Perforated Supply Diffuser, Lay-in Frame
Nailor	4320	8"	12"x12" Module, Perforated Supply Diffuser, Lay-in Frame
Nailor	4320	6"	24"x24" Module, Perforated Supply Diffuser, Lay-in Frame
Nailor	4320	8"	24"x24" Module, Perforated Supply Diffuser, Lay-in Frame
Nailor	4320	10"	24"x24" Module, Perforated Supply Diffuser, Lay-in Frame
Nailor	4320	12"	24"x24" Module, Perforated Supply Diffuser, Lay-in Frame
Nailor	4320	14"	24"x24" Module, Perforated Supply Diffuser, Lay-in Frame
<u>Manufacturer</u>	<u>Model</u>	<u>Size</u>	<u>Description</u>
Nailor	4320-F	6"	24"x24" Module, Perforated Supply Diffuser, Finline Frame
Nailor	4320-F	8"	24"x24" Module, Perforated Supply Diffuser, Finline Frame
Nailor	4320-F	10"	24"x24" Module, Perforated Supply Diffuser, Finline Frame
Nailor	4320-F	12"	24"x24" Module, Perforated Supply Diffuser, Finline Frame
Nailor	4320-F	14"	24"x24" Module, Perforated Supply Diffuser, Finline Frame
<u>Manufacturer</u>	<u>Model</u>	<u>Size</u>	<u>Description</u>
Nailor	4320CB	6"	24"x24" Module, Perforated Supply Diffuser, Curved Blade, Lay-in Frame
Nailor	4320CB	8"	24"x24" Module, Perforated Supply Diffuser, Curved Blade, Lay-in Frame
Nailor	4320CB	10"	24"x24" Module, Perforated Supply Diffuser, Curved Blade, Lay-in Frame
Nailor	4320CB	12"	24"x24" Module, Perforated Supply Diffuser, Curved Blade, Lay-in Frame
Nailor	4320CB	14"	24"x24" Module, Perforated Supply Diffuser, Curved Blade, Lay-in Frame
<u>Manufacturer</u>	<u>Model</u>	<u>Size</u>	<u>Description</u>
Nailor	4360	6"	12"x12" Module, Perforated Return Diffuser, Lay-in Frame
Nailor	4360	8"	12"x12" Module, Perforated Return Diffuser, Lay-in Frame
Nailor	4360	6"	24"x24" Module, Perforated Return Diffuser, Lay-in Frame
Nailor	4360	8"	24"x24" Module, Perforated Return Diffuser, Lay-in Frame
Nailor	4360	10"	24"x24" Module, Perforated Return Diffuser, Lay-in Frame
Nailor	4360	12"	24"x24" Module, Perforated Return Diffuser, Lay-in Frame
Nailor	4360	14"	24"x24" Module, Perforated Return Diffuser, Lay-in Frame
Nailor	4360	16"	24"x24" Module, Perforated Return Diffuser, Lay-in Frame
Nailor	4360	22" x 10"	24"x12" Module, Perforated Return Diffuser w/ Full Rectangle Neck, Lay-in Frame
Nailor	4360	22" x 22"	24"x24" Module, Perforated Return Diffuser w/ Full Square Neck, Lay-in Frame
<u>Manufacturer</u>	<u>Model</u>	<u>Size</u>	<u>Description</u>
Nailor	4302	24" x 12"	24"x12" Module, Perforated Return Panel, Lay-in Frame
Nailor	4302	24" x 24"	24"x24" Module, Perforated Return Panel, Lay-in Frame
<u>Manufacturer</u>	<u>Model</u>	<u>Size</u>	<u>Description</u>
Nailor	4360-F	6"	24"x24" Module, Perforated Return Diffuser, Finline Frame
Nailor	4360-F	8"	24"x24" Module, Perforated Return Diffuser, Finline Frame
Nailor	4360-F	10"	24"x24" Module, Perforated Return Diffuser, Finline Frame
Nailor	4360-F	12"	24"x24" Module, Perforated Return Diffuser, Finline Frame
Nailor	4360-F	14"	24"x24" Module, Perforated Return Diffuser, Finline Frame
Nailor	4360-F	16"	24"x24" Module, Perforated Return Diffuser, Finline Frame
Nailor	4360-F	22" x 10"	24"x12" Module, Perforated Return Diffuser w/ Full Rectangle Neck, Finline Frame
Nailor	4360-F	22" x 22"	24"x24" Module, Perforated Return Diffuser w/ Full Square Neck, Finline Frame



Manufacturer	Model	Size	Description
Nailor	UNI	6"	12"x12" Module, Square Plaque Face Diffuser, Lay-in Frame
Nailor	UNI	8"	12"x12" Module, Square Plaque Face Diffuser, Lay-in Frame
Nailor	UNI2	6"	24"x24" Module, Square Plaque Face Diffuser, Lay-in Frame
Nailor	UNI2	8"	24"x24" Module, Square Plaque Face Diffuser, Lay-in Frame
Nailor	UNI2	10"	24"x24" Module, Square Plaque Face Diffuser, Lay-in Frame
Nailor	UNI2	12"	24"x24" Module, Square Plaque Face Diffuser, Lay-in Frame
Nailor	UNI2	14"	24"x24" Module, Square Plaque Face Diffuser, Lay-in Frame
Nailor	UNI2	15"	24"x24" Module, Square Plaque Face Diffuser, Lay-in Frame
Manufacturer	Model	Size	Description
Nailor	UNI2-F	6"	24"x24" Module, Square Plaque Face Diffuser, Fineline Frame
Nailor	UNI2-F	8"	24"x24" Module, Square Plaque Face Diffuser, Fineline Frame
Nailor	UNI2-F	10"	24"x24" Module, Square Plaque Face Diffuser, Fineline Frame
Nailor	UNI2-F	12"	24"x24" Module, Square Plaque Face Diffuser, Fineline Frame
Nailor	UNI2-F	14"	24"x24" Module, Square Plaque Face Diffuser, Fineline Frame
Nailor	UNI2-F	15"	24"x24" Module, Square Plaque Face Diffuser, Fineline Frame
Manufacturer	Model	Size	Description
Nailor	RNS	6"	12"x12" Module, Louvered Face Diffuser, 4-Cones, Lay-in Frame
Nailor	RNS	8"	12"x12" Module, Louvered Face Diffuser, 4-Cones, Lay-in Frame
Nailor	RNS	6"	24"x24" Module, Louvered Face Diffuser, 4-Cones, Lay-in Frame
Nailor	RNS	8"	24"x24" Module, Louvered Face Diffuser, 4-Cones, Lay-in Frame
Nailor	RNS	10"	24"x24" Module, Louvered Face Diffuser, 4-Cones, Lay-in Frame
Nailor	RNS	12"	24"x24" Module, Louvered Face Diffuser, 4-Cones, Lay-in Frame
Nailor	RNS	14"	24"x24" Module, Louvered Face Diffuser, 4-Cones, Lay-in Frame
Manufacturer	Model	Size	Description
Nailor	RNR	6"	Round Ceiling Diffuser, 3-Cones
Nailor	RNR	8"	Round Ceiling Diffuser, 3-Cones
Nailor	RNR	10"	Round Ceiling Diffuser, 3-Cones
Nailor	RNR	12"	Round Ceiling Diffuser, 3-Cones
Nailor	RNR	14"	Round Ceiling Diffuser, 3-Cones
Manufacturer	Model	Size	Description
Nailor	RUNI	6"	Round Plaque Face Ceiling Diffuser
Nailor	RUNI	8"	Round Plaque Face Ceiling Diffuser
Nailor	RUNI	10"	Round Plaque Face Ceiling Diffuser
Nailor	RUNI	12"	Round Plaque Face Ceiling Diffuser
Nailor	RUNI	14"	Round Plaque Face Ceiling Diffuser

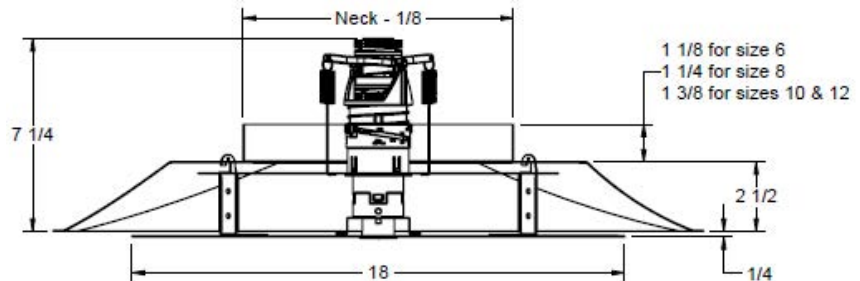
UNI & UNI2 Quadrant Blanks

Manufacturer	Model	Size	Description
Nailor	4695	6"	Quadrant Blank for Nailor UNI Series, 6" Round Neck
Nailor	4695	8"	Quadrant Blank for Nailor UNI Series, 8" Round Neck
Nailor	4695	10"	Quadrant Blank for Nailor UNI Series, 10" Round Neck
Nailor	4695	12"	Quadrant Blank for Nailor UNI Series, 12" Round Neck
Nailor	4695	14"	Quadrant Blank for Nailor UNI Series, 14" Round Neck
Nailor	4695	15"	Quadrant Blank for Nailor UNI Series, 15" Round Neck
Manufacturer	Model	Size	Description
Nailor	4693	All	Quadrant Blank for Nailor UNI2 Series Diffuser, 24"x24" Module



Pattern Diffusers

Manufacturer	Model	Size	Description
Nailor	6500	6" x 6"	Pattern Diffuser, 4-way, Surface Mount Frame
Nailor	6500	9" x 9"	Pattern Diffuser, 4-way, Surface Mount Frame
Nailor	6500	12" x 12"	Pattern Diffuser, 4-way, Surface Mount Frame
Nailor	6500	15" x 15"	Pattern Diffuser, 4-way, Surface Mount Frame
Nailor	6500	18" x 18"	Pattern Diffuser, 4-way, Surface Mount Frame
Manufacturer	Model	Size	Description
Nailor	6500	6" x 6"	24"x24" Module, Pattern Diffuser, 4-way, Lay-in Frame
Nailor	6500	9" x 9"	24"x24" Module, Pattern Diffuser, 4-way, Lay-in Frame
Nailor	6500	12" x 12"	24"x24" Module, Pattern Diffuser, 4-way, Lay-in Frame
Nailor	6500	15" x 15"	24"x24" Module, Pattern Diffuser, 4-way, Lay-in Frame
Manufacturer	Model	Size	Description
Nailor	6500IV	6" x 6"	Pattern Diffuser w/ Induction Vanes, 4-way, Surface Mount Frame
Nailor	6500IV	9" x 9"	Pattern Diffuser w/ Induction Vanes, 4-way, Surface Mount Frame
Nailor	6500IV	12" x 12"	Pattern Diffuser w/ Induction Vanes, 4-way, Surface Mount Frame
Nailor	6500IV	15" x 15"	Pattern Diffuser w/ Induction Vanes, 4-way, Surface Mount Frame
Nailor	6500IV	18" x 18"	Pattern Diffuser w/ Induction Vanes, 4-way, Surface Mount Frame
Manufacturer	Model	Size	Description
Nailor	6500IV	6" x 6"	24"x24" Module, Pattern Diffuser w/ Induction Vanes, 4-way, Lay-in Frame
Nailor	6500IV	9" x 9"	24"x24" Module, Pattern Diffuser w/ Induction Vanes, 4-way, Lay-in Frame
Nailor	6500IV	12" x 12"	24"x24" Module, Pattern Diffuser w/ Induction Vanes, 4-way, Lay-in Frame
Nailor	6500IV	15" x 15"	24"x24" Module, Pattern Diffuser w/ Induction Vanes, 4-way, Lay-in Frame



Thermally Actuated VAV Diffusers

Manufacturer	Model	Size	Description
Tuttle & Bailey	VTD	8"	24"x24" Module, Thermally Powered VAV Diffuser, VAV Heating & Cooling
Tuttle & Bailey	VTD	10"	24"x24" Module, Thermally Powered VAV Diffuser, VAV Heating & Cooling
Tuttle & Bailey	VTD	12"	24"x24" Module, Thermally Powered VAV Diffuser, VAV Heating & Cooling

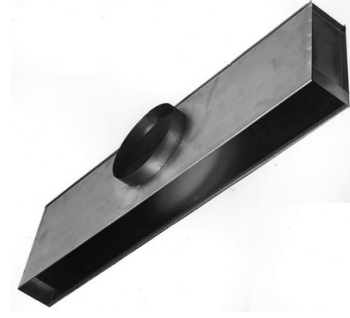


Plenum Slot Diffusers

Manufacturer	Model	Size	Description
Nailor	5710I	24" x 1 Slot, 6" Inlet	Insulated Plenum Slot Diffuser, 1" Slot Width, Lay-in Frame
Nailor	5710I	24" x 2 Slot, 8" Inlet	Insulated Plenum Slot Diffuser, 1" Slot Width, Lay-in Frame
Nailor	5710I	48" x 1 Slot, 8" Inlet	Insulated Plenum Slot Diffuser, 1" Slot Width, Lay-in Frame
Nailor	5710I	48" x 2 Slot, 8" Inlet	Insulated Plenum Slot Diffuser, 1" Slot Width, Lay-in Frame
Nailor	5710I	48" x 2 Slot, 10" Inlet	Insulated Plenum Slot Diffuser, 1" Slot Width, Lay-in Frame
Nailor	5710I	48"x 2 Slot, 8" Inlet,CN	Insulated Plenum Slot Diffuser w/ Cross Notch, 1" Slot Width, Lay-in Frame
Nailor	5710I	48"x 2 Slot, 10" Inlet,CN	Insulated Plenum Slot Diffuser w/ Cross Notch, 1" Slot Width, Lay-in Frame

Noted:

CN = Cross Notch. Cross Notch Option Allows 48" Plenum Slot Diffuser to be Installed in a 24" x 24" Ceiling Grid

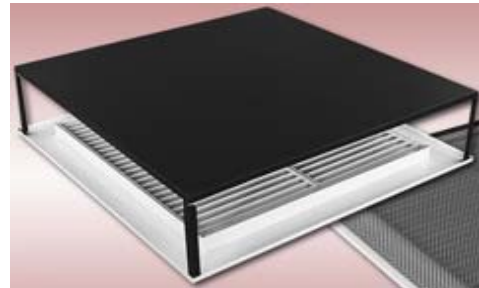


Linear Slot Diffusers

Manufacturer	Model	Size	Description
Nailor	5010	48" x 1 Slot	Linear Slot Diffuser, 1" Slot Width, "FF" End Cap Configuration
Nailor	5010	48" x 2 Slot	Linear Slot Diffuser, 1" Slot Width, "FF" End Cap Configuration
Nailor	5010	48" x 3 Slot	Linear Slot Diffuser, 1" Slot Width, "FF" End Cap Configuration
Nailor	5010	48" x 4 Slot	Linear Slot Diffuser, 1" Slot Width, "FF" End Cap Configuration
Nailor	5010	48" x 1 Slot	Linear Slot Diffuser, 1" Slot Width, "MM" End Cap Configuration
Nailor	5010	48" x 2 Slot	Linear Slot Diffuser, 1" Slot Width, "MM" End Cap Configuration
Nailor	5310I	48" x 2 Slot x 8" Inlet	Internally Insulated Plenum for 5010 Diffuser, 2 Slot, Hemmed Leg
Nailor	5310I	48" x 2 Slot x 10" Inlet	Internally Insulated Plenum for 5010 Diffuser, 2 Slot, Hemmed Leg

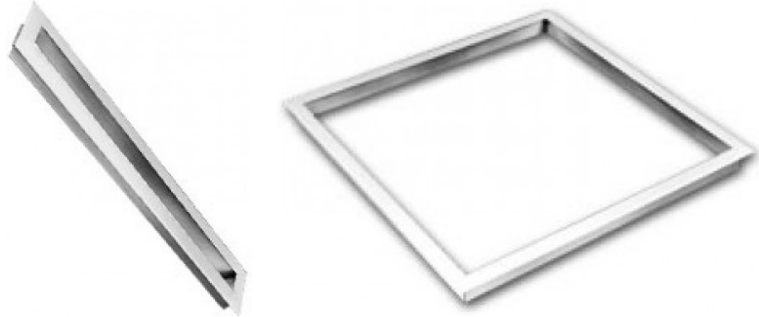
Noted:

All 5010 linear slot diffusers provided with frame type "C" flange frame w/ concealed fasteners



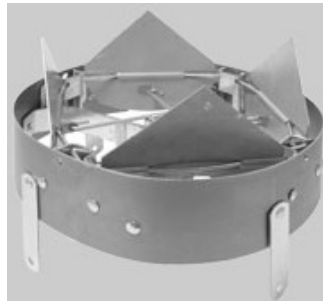
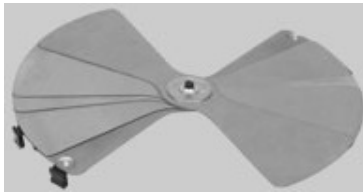
Light Shields

Manufacturer	Model	Size	Description
Safe-Air Dowco	LS2412	24" x 12"	24" x 12" Light Shield, Flat Black Finish
Safe-Air Dowco	LS2424	24" x 24"	24" x 24" Light Shield, Flat Black Finish



Drywall/Plaster Frames

Manufacturer	Model	Size	Description
Nailor	PF5710	24" x 1 Slot	Plaster Frame for Plenum Slot Diffuser 5710I, 24" x 1 Slot
Nailor	PF5710	24" x 2 Slot	Plaster Frame for Plenum Slot Diffuser 5710I, 24" x 2 Slot
Nailor	PF5710	48" x 1 Slot	Plaster Frame for Plenum Slot Diffuser 5710I, 48" x 1 Slot
Nailor	PF5710	48" x 2 Slot	Plaster Frame for Plenum Slot Diffuser 5710I, 48" x 2 Slot
Nailor	DFA	12" x 12"	12"x12" Module, Diffuser Drywall/Plaster Frame
Nailor	DFA	24" x 12"	24"x12" Module, Diffuser Drywall/Plaster Frame
Nailor	DFA	24" x 24"	24"x24" Module, Diffuser Drywall/Plaster Frame



Dampers

Manufacturer	Model	Size	Description
Nailor	4250	6"	Radial Sliding Blade Damper, For Round Neck Diffuser
Nailor	4250	8"	Radial Sliding Blade Damper, For Round Neck Diffuser
Nailor	4250	10"	Radial Sliding Blade Damper, For Round Neck Diffuser
Nailor	4250	12"	Radial Sliding Blade Damper, For Round Neck Diffuser
Nailor	4250	14"	Radial Sliding Blade Damper, For Round Neck Diffuser
Nailor	4275	6"	Radial Opposed Blade Damper, For Round Neck Diffuser
Nailor	4275	8"	Radial Opposed Blade Damper, For Round Neck Diffuser
Nailor	4275	10"	Radial Opposed Blade Damper, For Round Neck Diffuser
Nailor	4275	12"	Radial Opposed Blade Damper, For Round Neck Diffuser
Nailor	4275	14"	Radial Opposed Blade Damper, For Round Neck Diffuser
Nailor	OBD-S	6" x 6"	Opposed Blade Damper, Short Blades, Screwdriver Slot Operator
Nailor	OBD-S	9" x 9"	Opposed Blade Damper, Short Blades, Screwdriver Slot Operator
Nailor	OBD-S	12" x 12"	Opposed Blade Damper, Short Blades, Screwdriver Slot Operator
Nailor	OBD-S	15" x 15"	Opposed Blade Damper, Short Blades, Screwdriver Slot Operator
Nailor	OBD-S	18" x 18"	Opposed Blade Damper, Short Blades, Screwdriver Slot Operator
Nailor	OBD-S	22" x 10"	Opposed Blade Damper, Short Blades, Screwdriver Slot Operator
Nailor	OBD-S	22" x 22"	Opposed Blade Damper, Short Blades, Screwdriver Slot Operator
Nailor	COD-HATAS	6"	Cable Operated Damper for Round Neck Diffuser, 36" Long Cable
Nailor	COD-HATAS	8"	Cable Operated Damper for Round Neck Diffuser, 36" Long Cable
Nailor	COD-HATAS	10"	Cable Operated Damper for Round Neck Diffuser, 36" Long Cable
Nailor	COD-HATAS	12"	Cable Operated Damper for Round Neck Diffuser, 36" Long Cable
Nailor	COD-HATAS	14"	Cable Operated Damper for Round Neck Diffuser, 36" Long Cable

Touch-up Paint

Manufacturer	Model	Size	Description
Nailor	TUPAW	n/a	Can of Appliance White Touch-up Spray Paint



Return Registers

Manufacturer	Model	Size	Description
Nailor	6145H-O	6" x 6"	Return Air Register w/ Damper, Surface Mount Frame
Nailor	6145H-O	8" x 6"	Return Air Register w/ Damper, Surface Mount Frame
Nailor	6145H-O	8" x 8"	Return Air Register w/ Damper, Surface Mount Frame
Nailor	6145H-O	10" x 6"	Return Air Register w/ Damper, Surface Mount Frame
Nailor	6145H-O	10" x 8"	Return Air Register w/ Damper, Surface Mount Frame
Nailor	6145H-O	10" x 10"	Return Air Register w/ Damper, Surface Mount Frame
Nailor	6145H-O	12" x 6"	Return Air Register w/ Damper, Surface Mount Frame
Nailor	6145H-O	12" x 8"	Return Air Register w/ Damper, Surface Mount Frame
Nailor	6145H-O	12" x 10"	Return Air Register w/ Damper, Surface Mount Frame
Nailor	6145H-O	12" x 12"	Return Air Register w/ Damper, Surface Mount Frame
Nailor	6145H-O	14" x 6"	Return Air Register w/ Damper, Surface Mount Frame
Nailor	6145H-O	14" x 8"	Return Air Register w/ Damper, Surface Mount Frame
Nailor	6145H-O	14" x 10"	Return Air Register w/ Damper, Surface Mount Frame
Nailor	6145H-O	14" x 12"	Return Air Register w/ Damper, Surface Mount Frame
Nailor	6145H-O	14" x 14"	Return Air Register w/ Damper, Surface Mount Frame
Nailor	6145H-O	16" x 8"	Return Air Register w/ Damper, Surface Mount Frame
Nailor	6145H-O	16" x 10"	Return Air Register w/ Damper, Surface Mount Frame
Nailor	6145H-O	16" x 12"	Return Air Register w/ Damper, Surface Mount Frame
Nailor	6145H-O	16" x 16"	Return Air Register w/ Damper, Surface Mount Frame
Nailor	6145H-O	18" x 12"	Return Air Register w/ Damper, Surface Mount Frame
Nailor	6145H-O	18" x 18"	Return Air Register w/ Damper, Surface Mount Frame
Nailor	6145H-O	22" x 22"	Return Air Register w/ Damper, Surface Mount Frame
Nailor	6145H-O	24" x 12"	Return Air Register w/ Damper, Surface Mount Frame
Nailor	6145H-O	24" x 18"	Return Air Register w/ Damper, Surface Mount Frame
Nailor	6145H-O	24" x 24"	Return Air Register w/ Damper, Surface Mount Frame
Nailor	6145H-O	48" x 24"	Return Air Register w/ Damper, Surface Mount Frame
Manufacturer	Model	Size	Description
Nailor	6145H-O	24" x 12"	24"x12" Module, 22" x 10"Nk, Return Air Register w/ Damper, Lay-in Frame
Nailor	6145H-O	24" x 24"	24"x24" Module, 22" x 22"Nk, Return Air Register w/ Damper, Lay-in Frame



Linear Floor Registers

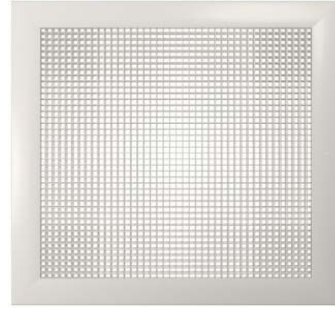
Manufacturer	Model	Size	Description
Tuttle & Bailey	200	4" x 10"	Aluminum Linear Floor Register, Satin Anodized Finish, Lay-in Frame
Tuttle & Bailey	200	4" x 12"	Aluminum Linear Floor Register, Satin Anodized Finish, Lay-in Frame
Tuttle & Bailey	200	4" x 14"	Aluminum Linear Floor Register, Satin Anodized Finish, Lay-in Frame
Tuttle & Bailey	200	6" x 10"	Aluminum Linear Floor Register, Satin Anodized Finish, Lay-in Frame
Tuttle & Bailey	200	6" x 12"	Aluminum Linear Floor Register, Satin Anodized Finish, Lay-in Frame
Tuttle & Bailey	200	6" x 14"	Aluminum Linear Floor Register, Satin Anodized Finish, Lay-in Frame

Noted: Sizes listed are Height" x Width"



Return Grilles

<u>Manufacturer</u>	<u>Model</u>	<u>Size</u>	<u>Description</u>
Nailor	6145H	6" x 6"	Return Air Grille, Surface Mount Frame
Nailor	6145H	8" x 6"	Return Air Grille, Surface Mount Frame
Nailor	6145H	8" x 8"	Return Air Grille, Surface Mount Frame
Nailor	6145H	10" x 6"	Return Air Grille, Surface Mount Frame
Nailor	6145H	10" x 8"	Return Air Grille, Surface Mount Frame
Nailor	6145H	10" x 10"	Return Air Grille, Surface Mount Frame
Nailor	6145H	12" x 6"	Return Air Grille, Surface Mount Frame
Nailor	6145H	12" x 8"	Return Air Grille, Surface Mount Frame
Nailor	6145H	12" x 10"	Return Air Grille, Surface Mount Frame
Nailor	6145H	12" x 12"	Return Air Grille, Surface Mount Frame
Nailor	6145H	14" x 6"	Return Air Grille, Surface Mount Frame
Nailor	6145H	14" x 8"	Return Air Grille, Surface Mount Frame
Nailor	6145H	14" x 10"	Return Air Grille, Surface Mount Frame
Nailor	6145H	14" x 12"	Return Air Grille, Surface Mount Frame
Nailor	6145H	14" x 14"	Return Air Grille, Surface Mount Frame
Nailor	6145H	16" x 8"	Return Air Grille, Surface Mount Frame
Nailor	6145H	16" x 10"	Return Air Grille, Surface Mount Frame
Nailor	6145H	16" x 12"	Return Air Grille, Surface Mount Frame
Nailor	6145H	16" x 16"	Return Air Grille, Surface Mount Frame
Nailor	6145H	18" x 10"	Return Air Grille, Surface Mount Frame
Nailor	6145H	18" x 12"	Return Air Grille, Surface Mount Frame
Nailor	6145H	18" x 18"	Return Air Grille, Surface Mount Frame
Nailor	6145H	22" x 10"	Return Air Grille, Surface Mount Frame
Nailor	6145H	22" x 22"	Return Air Grille, Surface Mount Frame
Nailor	6145H	24" x 12"	Return Air Grille, Surface Mount Frame
Nailor	6145H	24" x 18"	Return Air Grille, Surface Mount Frame
Nailor	6145H	24" x 24"	Return Air Grille, Surface Mount Frame
Nailor	6145H	36" x 24"	Return Air Grille, Surface Mount Frame
Nailor	6145H	48" x 24"	Return Air Grille, Surface Mount Frame
<u>Manufacturer</u>	<u>Model</u>	<u>Size</u>	<u>Description</u>
Nailor	6145H	12" x 12"	12"x12" Module, 10" x 10"Nk, Return Air Grille, Lay-in Frame
Nailor	6145H	24" x 12"	24"x12" Module, 22" x 10"Nk, Return Air Grille, Lay-in Frame
Nailor	6145H	24" x 24"	24"x24" Module, 22" x 22"Nk, Return Air Grille, Lay-in Frame
Nailor	6145H	48" x 24"	48"x24" Module, 46" x 22"Nk, Return Air Grille, Lay-in Frame
<u>Manufacturer</u>	<u>Model</u>	<u>Size</u>	<u>Description</u>
Nailor	6145F	24" x 12"	24"x12" Module, 22" x 10"Nk, Return Air Grille, Finline Frame
Nailor	6145F	24" x 24"	24"x24" Module, 22" x 22"Nk, Return Air Grille, Finline Frame



Eggcrate Return Grilles

Manufacturer	Model	Size	Description
Nailor	51EC	24" x 12"	24"x12" Module, 22" x 10"Nk, Eggcrate Return Air Grille, Lay-in Frame
Nailor	51EC	24" x 24"	24"x24" Module, 22" x 22"Nk, Eggcrate Return Air Grille, Lay-in Frame



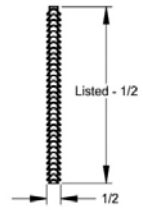
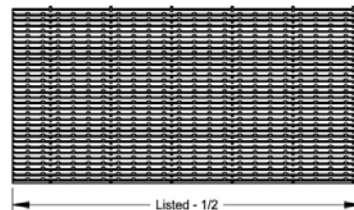
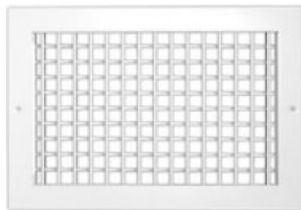
Filter Return Grille

Manufacturer	Model	Size	Description
Nailor	51FB45	24" x 24"	24"x24" Module, 20" x 20"Nk, Return Air Filter Grille, Lay-in Frame



Door / Transfer Grilles

Manufacturer	Model	Size	Description
Nailor	61DGD	24" x 12"	Door/Transfer Grille, Double Flange, Surface Mount Frame
Nailor	61DGD	24" x 18"	Door/Transfer Grille, Double Flange, Surface Mount Frame



Specialty Grilles

Manufacturer	Model	Size	Description
Nailor	61DV	22" x 4"	Double Deflection Supply Grille, Lay-in Frame, No Screw Holes
Nailor	61DV	22" x 6"	Double Deflection Supply Grille, Lay-in Frame, No Screw Holes
Nailor	61DV	22" x 8"	Double Deflection Supply Grille, Lay-in Frame, No Screw Holes
Tuttle & Bailey	GOV-0	48" x 36"	Steel Transfer Air Grille, V-Core Only, Mill Finish
Tuttle & Bailey	AGOV-0	48" x 36"	Aluminum Transfer Air Grille, V-Core Only, Mill Finish



Square to Round Adapters

Manufacturer	Model	Size	Description
Dace	SRA	6" x 6" x 6"	6" x 6" to 6"Rnd, Square to Round Adapter
Dace	SRA	9" x 9" x 8"	9" x 9" to 8"Rnd, Square to Round Adapter
Dace	SRA	10" x 10" x 6"	10" x 10" to 6"Rnd, Square to Round Adapter
Dace	SRA	10" x 10" x 8"	10" x 10" to 8"Rnd, Square to Round Adapter
Dace	SRA	12" x 12" x 10"	12" x 12" to 10"Rnd, Square to Round Adapter
Dace	SRA	12" x 12" x 12"	12" x 12" to 12"Rnd, Square to Round Adapter
Dace	SRA	15" x 15" x 14"	15" x 15" to 14"Rnd, Square to Round Adapter
Dace	SRA	18" x 18" x 16"	18" x 18" to 16"Rnd, Square to Round Adapter
Dace	SRA	18" x 18" x 18"	18" x 18" to 18"Rnd, Square to Round Adapter
Dace	SRA	22" x 10" x 6"	22" x 10" to 6"Rnd, Square to Round Adapter
Dace	SRA	22" x 10" x 8"	22" x 10" to 8"Rnd, Square to Round Adapter
Dace	SRA	22" x 10" x 10"	22" x 10" to 10"Rnd, Square to Round Adapter
Dace	SRA	22" x 22" x 6"	22" x 22" to 6"Rnd, Square to Round Adapter
Dace	SRA	22" x 22" x 8"	22" x 22" to 8"Rnd, Square to Round Adapter
Dace	SRA	22" x 22" x 10"	22" x 22" to 10"Rnd, Square to Round Adapter
Dace	SRA	22" x 22" x 12"	22" x 22" to 12"Rnd, Square to Round Adapter
Dace	SRA	22" x 22" x 14"	22" x 22" to 14"Rnd, Square to Round Adapter
Dace	SRA	22" x 22" x 16"	22" x 22" to 16"Rnd, Square to Round Adapter
Dace	SRA	22" x 22" x 18"	22" x 22" to 18"Rnd, Square to Round Adapter



Round to Round Adapters

Manufacturer	Model	Size	Description
Dace	RTR	8" x 6"	8" to 6", Round To Round Adapter
Dace	RTR	10" x 6"	10" to 6", Round To Round Adapter
Dace	RTR	10" x 8"	10" to 8", Round To Round Adapter
Dace	RTR	12" x 8"	12" to 8", Round To Round Adapter
Dace	RTR	12" x 10"	12" to 10", Round To Round Adapter
Dace	RTR	14" x 10"	14" to 10", Round To Round Adapter
Dace	RTR	14" x 12"	14" to 12", Round To Round Adapter
Dace	RTR	16" x 12"	16" to 12", Round To Round Adapter
Dace	RTR	16" x 14"	16" to 14", Round To Round Adapter



Broan Fans & Accessories

Manufacturer	Model	CFM @ 0.10" SP	Description
Broan	A80	80	Ceiling Exhaust Fan, 80 CFM, 2.0 Sones
Broan	A110	110	Ceiling Exhaust Fan, 110 CFM, 3.0 Sones
Broan	L100	115	Ceiling Exhaust Fan, 115 CFM, 0.8 Sones
Broan	L150	161	Ceiling Exhaust Fan, 161 CFM, 1.4 Sones
Broan	L200	214	Ceiling Exhaust Fan, 214 CFM, 1.8 Sones
Broan	L250	261	Ceiling Exhaust Fan, 261 CFM, 2.3 Sones
Broan	L300	309	Ceiling Exhaust Fan, 309 CFM, 2.9 Sones
Broan	L400	442	Ceiling Exhaust Fan, 442 CFM, 2.4 Sones
Broan	L500	520	Ceiling Exhaust Fan, 520 CFM, 3.1 Sones
Broan	L700	704	Ceiling Exhaust Fan, 704 CFM, 4.6 Sones
Broan	L900	905	Ceiling Exhaust Fan, 905 CFM, 4.0 Sones
Broan	L1500	1,526	Ceiling Exhaust Fan, 1526 CFM, 8.4 Sones
Broan	QTXE050	50	Ultra Silent Ceiling Exhaust Fan, 50 CFM, < 0.3 Sones
Broan	QTXE080	80	Ultra Silent Ceiling Exhaust Fan, 80 CFM, 0.3 Sones
Broan	QTXE110	110	Ultra Silent Ceiling Exhaust Fan, 110 CFM, 0.7 Sones
Broan	QTXE150	150	Ultra Silent Ceiling Exhaust Fan, 150 CFM, 1.4 Sones
Broan	57W	n/a	3 Amp, Electronic Variable Speed Controller, Fits Single Gang Box, White
Broan	80L	n/a	3 Amp, Electronic Speed Controller, Internal Mount
Broan	72W	n/a	6 Amp, Electronic Variable Speed Controller, Fits Single Gang Box, White (L1500 Only)
Broan	70TW	n/a	Line Voltage Wall Thermostat, White, 125/250/277 VAC: 22 Amp Capacity
Broan	961L	n/a	Inline Adapter Kit for L100 & L150
Broan	981L	n/a	Inline Adapter Kit for L200, L250, & L300
Broan	982L	n/a	Inline Adapter Kit for L400, L500, & L700
Broan	983L	n/a	Inline Adapter Kit for L900 & L1500
Broan	611	n/a	Aluminum Roof Cap, For up to 8" Round Duct, For Flat Roof Installation
Broan	612	n/a	Aluminum Roof Cap, For up to 12" Round Duct, For Flat Roof Installation
Broan	611CM	n/a	Aluminum Roof Cap, For up to 8" Round Duct, For Curb Mount Installation
Broan	612CM	n/a	Aluminum Roof Cap, For up to 12" Round Duct, For Curb Mount Installation
Broan	634	n/a	Black Steel Roof Cap, For up to 3.25" x 10" or up to 8" Round Duct
Broan	636	n/a	Black Steel Roof Cap, For 3" or 4" Round Duct
Broan	639	n/a	Black Steel Wall Cap, For 3.25" x 10" Duct
Broan	641	n/a	Aluminum Wall Cap, For 6" Round Duct
Broan	642	n/a	Aluminum Wall Cap, For 4" Round Duct
Broan	643	n/a	Aluminum Wall Cap, For 8" Round Duct

Notes:

Model 57W, 3 Amp speed controller for models A80,A110,L100,L150,L200,L250,L300,L400,L500,L700,L900

Model 72W, 6 Amp speed controller is for model L1500

CFM & Sones are based on standard horizontal discharge @ 0.10" SP



Twin City Fans & Accessories

Manufacturer	Model	CFM @ 0.25" SP	Description
Twin City	DCRD 070B	280	1/8 HP, 1650 RPM, 115V, 1Ph, ODP Motor
Twin City	DCRD 080B	340	1/8 HP, 1650 RPM, 115V, 1Ph, ODP Motor
Twin City	DCRD 090B	770	1/8 HP, 1650 RPM, 115V, 1Ph, ODP Motor
Twin City	DCRD 120B	1,790	1/3 HP, 1750 RPM, 115V, 1Ph, ODP Motor
Twin City	DCRD 140B	1,695	1/4 HP, 1160 RPM, 115V, 1Ph, ODP Motor
Twin City	BCRD 075D	450	1/4 HP, 1750 RPM, 115V, 1Ph, ODP Motor
Twin City	BCRD 085D	675	1/4 HP, 1750 RPM, 115V, 1Ph, ODP Motor
Twin City	BCRD 100D	1,000	1/4 HP, 1750 RPM, 115V, 1Ph, ODP Motor
Twin City	BCRD 120D	1,160	1/4 HP, 1750 RPM, 115V, 1Ph, ODP Motor
Twin City	BCRD 120D	1,650	1/3 HP, 1750 RPM, 115V, 1Ph, ODP Motor
Twin City	BCRD 120D	1,900	1/2 HP, 1750 RPM, 460V, 3Ph, ODP Motor
Twin City	BCRD 140D	1,200	1/4 HP, 1750 RPM, 115V, 1Ph, ODP Motor
Twin City	BCRD 140D	1,900	1/3 HP, 1750 RPM, 115V, 1Ph, ODP Motor
Twin City	BCRD 140D	2,200	1/2 HP, 1750 RPM, 460V, 3Ph, ODP Motor
Twin City	BCRD 140D	2,600	3/4 HP, 1750 RPM, 460V, 3Ph, ODP Motor
Twin City	BCRD 180D	3,200	1/2 HP, 1750 RPM, 460V, 3Ph, ODP Motor
Twin City	BCRD 180D	3,900	3/4 HP, 1750 RPM, 460V, 3Ph, ODP Motor
Twin City	BCRD 180D	4,500	1 HP, 1750 RPM, 460V, 3Ph, ODP Motor
Twin City	BCRD 240D	5,000	3/4 HP, 1750 RPM, 460V, 3Ph, ODP Motor
Twin City	BCRD 240D	6,000	1 HP, 1750 RPM, 460V, 3Ph, ODP Motor
Twin City	BCRD 240D	7,000	1-1/2 HP, 1750 RPM, 460V, 3Ph, ODP Motor
Twin City	BSI 100A	1,200	1/4 HP, 1750 RPM, 115V, 1Ph, TEFC Motor
Twin City	BSI 120A	1,500	1/3 HP, 1750 RPM, 115V, 1Ph, TEFC Motor
Twin City	DSI 080A	545	1/8 HP, 1650 RPM, 115V, 1Ph, ODP Motor
Twin City	DSI 090A	840	1/8 HP, 1650 RPM, 115V, 1Ph, ODP Motor
Twin City	VIRH1BLK	n/a	Set of (4) Black Neoprene Vibration Hangers
Twin City	VIHS1C50	n/a	Set of (4) Blue Spring Vibration Hangers
Twin City	66805601	n/a	5 Amp Speed Controller (KBWC-15K), 1/30HP - 1/4HP @ 115V 1Ph Motors
Twin City	66805701	n/a	10 Amp Speed Controller (KBWC-110K), 1/3HP - 1/2HP @ 115V 1Ph Motors
Twin City	90179301	n/a	Damper Motor Pack (MTR-611), 115/230V, For ACP 411/611 Dampers
Twin City	73362805	n/a	Transformer, 230/460/575V Input, 115/95V Output, 1Ph, 50VA, (GE 9T58K0062)
Twin City	DMP10G000	10" x 10"	Backdraft Damper (ACP 411-STD), BCRD070-085 & DCRD060-100
Twin City	DMP12G000	12" x 12"	Backdraft Damper (ACP 411-STD), BSI080-090 & DSI080-090
Twin City	DMP14G000	14" x 14"	Backdraft Damper (ACP 411-STD), BSI100, DSI100, BCRD100-120, & DCRD120
Twin City	DMP16G000	16" x 16"	Backdraft Damper (ACP 411-STD), BSI120 & DSI120
Twin City	DMP18G000	18" x 18"	Backdraft Damper (ACP 411-STD), BSI135, DSI135, BCRD140, & DCRD130-160
Twin City	DMP24G000	24" x 24"	Backdraft Damper (ACP 411-STD), BSI180, BCRD180-210, & DCRD170-180
Twin City	DMP28G000	28" x 28"	Backdraft Damper (ACP 411-STD), BSI210 & BCRD240

Notes:

DCRD Includes; Birdscreen (Galv), Backdraft Damper, Disconnect Switch (NEMA 1), Single Speed Motor

BCRD Includes; Birdscreen (Galv), Backdraft Damper, Disconnect Switch (NEMA 1), Single Speed Motor, Variable Speed V-belt Drive, 1.5 SF

BSI Includes; Motor Cover, Disconnect Switch (NEMA 1), Single Speed Motor, Variable Speed V-belt Drive, 1.5 SF

DSI Includes; Insulated Housing (Foil Backed Fiberglass), Mounted & Wired Speed Controller & Disconnect Switch (NEMA 1), Single Speed Motor

Twin City Fan Parts

Manufacturer	Model	Size	Description
Twin City	1/4-SP-MOTOR	1/4 HP	MOTOR - 1/4HP TEFC 115 -230V - Single Phase w/ wiring harness
Twin City	1/2-SP-MOTOR	1/2 HP	MOTOR - 1/2HP TEFC 115 -230V - Single Phase w/ wiring harness
Twin City	3/4-SP-MOTOR	3/4 HP	MOTOR - 3/4HP TEFC 115 -230V - Single Phase w/ wiring harness
Twin City	60510308	15.12"	Top Cover, Aluminum, DCRD060-100
Twin City	60510310	22"	Top Cover, Aluminum, BCRD070-100 & DCRD120-140
Twin City	60510302	24"	Top Cover, Aluminum, BCRD120-160 & DCRD150-160
Twin City	60510303	30"	Top Cover, Aluminum, BCRD180-240 & DCRD170-180
Twin City	40411210	3"	Idler Sheave, BCRD070-160 & BCRU110-180



Delhi Inline Fans

Manufacturer	Model	CFM @ .125" SP	Description
Delhi	207	300 - 1,100	Chicago Code Belt Drive Inline Ceiling Fan
Delhi	209	600 - 1,400	Chicago Code Belt Drive Inline Ceiling Fan
Delhi	210	1,100 - 1,900	Chicago Code Belt Drive Inline Ceiling Fan

Noted: Includes TEFC 115-230V 1Ph Motor, Insulated Cabinets, Vibration Isolators, and Disconnects



12" Roof Curbs

Manufacturer	Model	Curb O.D.	Description
Hranec	SC1412	14" x 14"	12" High Roof Curb for Broan 611CM
Hranec	SC1512	15.5" x 15.5"	12" High Roof Curb for DCRD 070B, 080B 090B; BCRD 075D, 085D
Hranec	SC1612	16" x 16"	12" High Roof Curb for Broan 612CM
Hranec	SC1812	18.5" x 18.5"	12" High Roof Curb for BCRD 100D, 120D
Hranec	SC2212	22.5" x 22.5"	12" High Roof Curb for DCRD 140B; BCRD 140D
Hranec	SC2812	28.5" x 28.5"	12" High Roof Curb for BCRD 180D
Hranec	SC3212	32.5" x 32.5"	12" High Roof Curb for BCRD 240D

18" Roof Curbs

Manufacturer	Model	Curb O.D.	Description
Hranec	SC1418	14" x 14"	18" High Roof Curb for Broan 611CM
Hranec	SC1518	15.5" x 15.5"	18" High Roof Curb for DCRD 070B, 080B 090B; BCRD 075D, 085D
Hranec	SC1618	16" x 16"	18" High Roof Curb for Broan 612CM
Hranec	SC1818	18.5" x 18.5"	18" High Roof Curb for BCRD 100D, 120D
Hranec	SC2218	22.5" x 22.5"	18" High Roof Curb for DCRD 140B; BCRD 140D
Hranec	SC2818	28.5" x 28.5"	18" High Roof Curb for BCRD 180D
Hranec	SC3218	32.5" x 32.5"	18" High Roof Curb for BCRD 240D

Noted: Standard Curb Construction Includes: 18Ga. Galv., Fully Welded, 1.5", 3lb Density Insulation, 2" Flange Out, 2" x 2" Wood Nailer



Square Access Doors

Manufacturer	Model	Size	Description
Nailor	08SCL	6" x 6"	Insulated Access Door w/ Cam Locks
Nailor	08SCL	8" x 8"	Insulated Access Door w/ Cam Locks
Nailor	08SCL	10" x 10"	Insulated Access Door w/ Cam Locks
Nailor	08SCL	12" x 12"	Insulated Access Door w/ Cam Locks
Nailor	08SCL	14" x 14"	Insulated Access Door w/ Cam Locks
Nailor	08SCL	16" x 16"	Insulated Access Door w/ Cam Locks
Nailor	08SCL	18" x 18"	Insulated Access Door w/ Cam Locks
Nailor	08SCL	20" x 20"	Insulated Access Door w/ Cam Locks
Nailor	08SCL	24" x 24"	Insulated Access Door w/ Cam Locks



Round Access Doors

Manufacturer	Model	Size	Description
Flexmaster USA	SDSM	8"	8" Round Access Door, Spin-In, R4.2
Flexmaster USA	SDSM	10"	10" Round Access Door, Spin-In, R4.2
Flexmaster USA	SDSM	12"	12" Round Access Door, Spin-In, R4.2
Flexmaster USA	SDSM	18"	18" Round Access Door, Spin-In, R4.2
Flexmaster USA	SDSM	24"	24" Round Access Door, Spin-In, R4.2



Fusible Links

Manufacturer	Model	Size (Length)	Description
Elsie	FL-A-165	2.625"	Fusible Link w/ Short Hooks, 165 degrees
Elsie	FL-A-212	2.625"	Fusible Link w/ Short Hooks, 212 degrees
Elsie	FL-B-165	1.5"	Fusible Link w/ Short Hooks, 165 degrees
Elsie	FL-B-212	1.5"	Fusible Link w/ Short Hooks, 212 degrees
Nailor	165GL	1.5"	Fusible Link, No Hooks, 165 degrees, For Multiblade Damper



UVDI

<u>Manufacturer</u>	<u>Model</u>	<u>Size</u>	<u>Description</u>
UVDI	28-1000	36W	VRES 36 Watt Residential UV System
UVDI	28-4163	36W	VRES Model 36 Watt, 15" Replacement Lamp



Tuttle & Bailey Terminal Units (Limited Stock Available)

<u>Manufacturer</u>	<u>Model</u>	<u>Size</u>	<u>Description</u>
Tuttle & Bailey	RRV	4"	RRV Exhaust Terminal Units 45 - 260
Tuttle & Bailey	RRV	6"	RRV Exhaust Terminal Units 100 - 590
Tuttle & Bailey	RRV	8"	RRV Exhaust Terminal Units 175 - 1045
Tuttle & Bailey	RRV	10"	RRV Exhaust Terminal Units 275 - 1635
Tuttle & Bailey	RRV	12"	RRV Exhaust Terminal Units 395 - 2350
Tuttle & Bailey	RRV	14"	RRV Exhaust Terminal Units 535 - 3200
Tuttle & Bailey	RRV	16"	RRV Exhaust Terminal Units 700 - 4200
<u>Manufacturer</u>	<u>Model</u>	<u>Size</u>	<u>Description</u>
Tuttle & Bailey	RRVSS	4"	Stainless Steel RRV Exhaust Terminal Units 45 - 260 CFM
Tuttle & Bailey	RRVSS	6"	Stainless Steel RRV Exhaust Terminal Units 100 - 590 CFM
Tuttle & Bailey	RRVSS	8"	Stainless Steel RRV Exhaust Terminal Units 175 - 1045 CFM
Tuttle & Bailey	RRVSS	10"	Stainless Steel RRV Exhaust Terminal Units 275 - 1635 CFM
Tuttle & Bailey	RRVSS	12"	Stainless Steel RRV Exhaust Terminal Units 395 - 2350 CFM
Tuttle & Bailey	RRVSS	14"	Stainless Steel RRV Exhaust Terminal Units 535 - 3200 CFM
Tuttle & Bailey	RRVSS	16"	Stainless Steel RRV Exhaust Terminal Units 700 - 4200 CFM



Flexible Duct

<u>Manufacturer</u>	<u>Model</u>	<u>Size</u>	<u>Description</u>
Flexmaster USA	3BR604	4"	4" Type "3B" High Pressure Insulated Black Vapor Barrier (R6)
Flexmaster USA	3BR606	6"	6" Type "3B" High Pressure Insulated Black Vapor Barrier (R6)
Flexmaster USA	3BR608	8"	8" Type "3B" High Pressure Insulated Black Vapor Barrier (R6)
Flexmaster USA	3BR610	10"	10" Type "3B" High Pressure Insulated Black Vapor Barrier (R6)
Flexmaster USA	3BR612	12"	12" Type "3B" High Pressure Insulated Black Vapor Barrier (R6)
Flexmaster USA	3BR614	14"	14" Type "3B" High Pressure Insulated Black Vapor Barrier (R6)
Flexmaster USA	3BR616	16"	16" Type "3B" High Pressure Insulated Black Vapor Barrier (R6)
Flexmaster USA	3BR618	18"	18" Type "3B" High Pressure Insulated Black Vapor Barrier (R6)
Flexmaster USA	3BR620	20"	20" Type "3B" High Pressure Insulated Black Vapor Barrier (R6)
<u>Manufacturer</u>	<u>Model</u>	<u>Size</u>	<u>Description</u>
Flexmaster USA	4NI06	6"	6" Type "4NI" High Pressure Non-Insulated
Flexmaster USA	4NI08	8"	8" Type "4NI" High Pressure Non-Insulated
Flexmaster USA	4NI10	10"	10" Type "4NI" High Pressure Non-Insulated
Flexmaster USA	4NI12	12"	12" Type "4NI" High Pressure Non-Insulated
Flexmaster USA	4NI14	14"	14" Type "4NI" High Pressure Non-Insulated
Flexmaster USA	4NI16	16"	16" Type "4NI" High Pressure Non-Insulated
<u>Manufacturer</u>	<u>Model</u>	<u>Size</u>	<u>Description</u>
Flexmaster USA	3NI04	4"	4" Type "3NI" High Pressure Non-Insulated
Flexmaster USA	3NI14	14"	14" Type "3NI" High Pressure Non-Insulated
Flexmaster USA	3NI16	16"	16" Type "3NI" High Pressure Non-Insulated
Flexmaster USA	3NI18	18"	18" Type "3NI" High Pressure Non-Insulated
Flexmaster USA	3NI20	20"	20" Type "3NI" High Pressure Non-Insulated
<u>Manufacturer</u>	<u>Model</u>	<u>Size</u>	<u>Description</u>
Flexmaster USA	UL-181-B	36.5"	Panduit Straps (pkg of 50)
Flexmaster USA	STHV	N/A	Strap Installation Tool

**** All items on this page are limited stock. Please verify sizes & quantities.**

Product Notes:

R6 = Thermal Conductance Value for Insulated Flexible Duct

Product Length:

All 3NI, 4NI, 3B = 25 Feet Per Box



Stretchflex

<u>Manufacturer</u>	<u>Model</u>	<u>Size</u>	<u>Description</u>
Westaflex	2501	3"	Aluminum Flexible Duct, 15' Compressed to 2.5'
Westaflex	2505	4"	Aluminum Flexible Duct, 15' Compressed to 2.5'
Westaflex	2509	5"	Aluminum Flexible Duct, 15' Compressed to 2.5'
Westaflex	2513	6"	Aluminum Flexible Duct, 15' Compressed to 2.5'
Westaflex	2517	7"	Aluminum Flexible Duct, 15' Compressed to 2.5'
Westaflex	2521	8"	Aluminum Flexible Duct, 15' Compressed to 2.5'
Westaflex	2525	9"	Aluminum Flexible Duct, 15' Compressed to 2.5'
Westaflex	2529	10"	Aluminum Flexible Duct, 15' Compressed to 2.5'
Westaflex	2537	12"	Aluminum Flexible Duct, 15' Compressed to 2.5'

Product Notes:

Box Size = 31" x 12" x 25.5"

11" is not available

Tubes Per Box Quantity:

3" = 24 tubes/box

4" = 15 tubes/box

5" = 8 tubes/box

6" = 6 tubes/box

7" = 4 tubes/box

8" = 3 tubes/box

9" = 2 tubes/box

10" = 2 tubes/box

12" = 2 tubes/box

Semco - Standard Slip Fit Connections

<u>Manufacturer</u>	<u>Model</u>	<u>Size</u>	<u>Description</u>
Semco Inc.	SP	4	Spiral Pipe - 4" Inlet
Semco Inc.	SP	6	Spiral Pipe - 6" Inlet
Semco Inc.	SP	10	Spiral Pipe - 10" Inlet
Semco Inc.	SP	14	Spiral Pipe - 14" Inlet

Noted: Model SP Length = 10Ft.

<u>Manufacturer</u>	<u>Model</u>	<u>Size</u>	<u>Description</u>
Semco Inc.	E90P	4	90 degree pleated elbow - 4" Inlet
Semco Inc.	E90P	6	90 degree pleated elbow - 6" Inlet
Semco Inc.	E90P	8	90 degree pleated elbow - 8" Inlet
Semco Inc.	E901	10	90 degree one piece elbow - 10" Inlet
Semco Inc.	E905	14	90 degree five piece elbow - 14" Inlet
Semco Inc.	E905	16	90 degree five piece elbow - 16" Inlet

<u>Manufacturer</u>	<u>Model</u>	<u>Size</u>	<u>Description</u>
Semco Inc.	E45P	4	45 degree pleated elbow - 4" Inlet
Semco Inc.	E45P	6	45 degree pleated elbow - 6" Inlet
Semco Inc.	E45P	8	45 degree pleated elbow - 8" Inlet
Semco Inc.	E451	10	45 degree one piece elbow - 10" Inlet
Semco Inc.	E451	12	45 degree one piece elbow - 12" Inlet
Semco Inc.	E453	14	45 degree three piece elbow - 14" Inlet
Semco Inc.	E453	16	45 degree three piece elbow - 16" Inlet

<u>Manufacturer</u>	<u>Model</u>	<u>Size</u>	<u>Description</u>
Semco Inc.	ST1T-S	4 x 4	90 degree saddle tap; 4" Inlet, 4" Connector
Semco Inc.	ST1T-S	6 x 4	90 degree saddle tap; 6" Inlet, 4" Connector
Semco Inc.	ST1T-S	8 x 4	90 degree saddle tap; 8" Inlet, 4" Connector
Semco Inc.	ST1T-S	6 x 6	90 degree saddle tap; 6" Inlet, 6" Connector
Semco Inc.	ST1T-S	8 x 6	90 degree saddle tap; 8" Inlet, 6" Connector
Semco Inc.	ST1T-S	10-12 x 6	90 degree saddle tap; 10"-12" Inlet, 6" Connector
Semco Inc.	ST1T-S	14-18 x 6	90 degree saddle tap; 14"-18" Inlet, 6" Connector
Semco Inc.	ST1T-S	8 x 8	90 degree saddle tap; 8" Inlet, 8" Connector
Semco Inc.	ST1T-S	10 x 8	90 degree saddle tap; 10" Inlet, 8" Connector
Semco Inc.	ST1T-S	12-14 x 8	90 degree saddle tap; 12"-14" Inlet, 8" Connector
Semco Inc.	ST1T-S	16-18 x 8	90 degree saddle tap; 16"-18" Inlet, 8" Connector
Semco Inc.	ST1T-S	12 x 10	90 degree saddle tap; 12" Inlet, 10" Connector
Semco Inc.	ST1T-S	14-16 x 10	90 degree saddle tap; 14"-16" Inlet, 10" Connector
Semco Inc.	ST1T-S	18-20 x 10	90 degree saddle tap; 18"-20" Inlet, 10" Connector
Semco Inc.	ST1T-S	14-16 x 12	90 degree saddle tap; 14"-16" Inlet, 12" Connector
Semco Inc.	ST1T-S	18-20 x 12	90 degree saddle tap; 18"-20" Inlet, 12" Connector

<u>Manufacturer</u>	<u>Model</u>	<u>Size</u>	<u>Description</u>
Semco Inc.	ST1T	10 x 10	90 degree saddle tap; 10" Inlet, 10" Connector
Semco Inc.	ST1T	12 x 12	90 degree saddle tap; 12" Inlet, 12" Connector
Semco Inc.	ST1T	14 x 14	90 degree saddle tap; 14" Inlet, 14" Connector
Semco Inc.	ST1T	16 x 14	90 degree saddle tap; 16" Inlet, 14" Connector
Semco Inc.	ST1T	18 x 14	90 degree saddle tap; 18" Inlet, 14" Connector
Semco Inc.	ST1T	16 x 16	90 degree saddle tap; 16" Inlet, 16" Connector
Semco Inc.	ST1T	18 x 16	90 degree saddle tap; 18" Inlet, 16" Connector
Semco Inc.	ST1T	18 x 18	90 degree saddle tap; 18" Inlet, 18" Connector

**** All items on this page are limited stock. Please verify quantities**

Semco - Standard Slip Fit Connections Continued

<u>Manufacturer</u>	<u>Model</u>	<u>Size</u>	<u>Description</u>
Semco Inc.	CPLM	4	Male Couplings - 4"
Semco Inc.	CPLM	6	Male Couplings - 6"
Semco Inc.	CPLM	8	Male Couplings - 8"
Semco Inc.	CPLM	10	Male Couplings - 10"
Semco Inc.	CPLM	12	Male Couplings - 12"
Semco Inc.	CPLM	14	Male Couplings - 14"
<u>Manufacturer</u>	<u>Model</u>	<u>Size</u>	<u>Description</u>
Semco Inc.	SR	6 x 4	Concentric Reducers; 6" Inlet, 4" Outlet
Semco Inc.	SR	8 x 4	Concentric Reducers; 8" Inlet, 4" Outlet
Semco Inc.	SR	8 x 6	Concentric Reducers; 8" Inlet, 6" Outlet
Semco Inc.	SR	10 x 6	Concentric Reducers; 10" Inlet, 6" Outlet
Semco Inc.	SR	10 x 8	Concentric Reducers; 10" Inlet, 8" Outlet
Semco Inc.	SR	12 x 8	Concentric Reducers; 12" Inlet, 8" Outlet
Semco Inc.	SR	12 x 10	Concentric Reducers; 12" Inlet, 10" Outlet
Semco Inc.	SR	14 x 10	Concentric Reducers; 14" Inlet, 10" Outlet
Semco Inc.	SR	14 x 12	Concentric Reducers; 14" Inlet, 12" Outlet
Semco Inc.	SR	16 x 12	Concentric Reducers; 16" Inlet, 12" Outlet
Semco Inc.	SR	16 x 14	Concentric Reducers; 16" Inlet, 14" Outlet
Semco Inc.	SR	18 x 14	Concentric Reducers; 18" Inlet, 14" Outlet
Semco Inc.	SR	20 x 16	Concentric Reducers; 20" Inlet, 16" Outlet
Semco Inc.	SR	20 x 18	Concentric Reducers; 20" Inlet, 18" Outlet
Semco Inc.	SR	22 x 18	Concentric Reducers; 22" Inlet, 18" Outlet
Semco Inc.	SR	22 x 20	Concentric Reducers; 22" Inlet, 20" Outlet
Semco Inc.	SR	24 x 20	Concentric Reducers; 24" Inlet, 20" Outlet
Semco Inc.	SR	24 x 22	Concentric Reducers; 24" Inlet, 20" Outlet
<u>Manufacturer</u>	<u>Model</u>	<u>Size</u>	<u>Description</u>
Semco Inc.	SCP	4	Plug / Cap - 4" Inlet
Semco Inc.	SCP	6	Plug / Cap - 6" Inlet
Semco Inc.	SCP	8	Plug / Cap - 8" Inlet
Semco Inc.	SCP	12	Plug / Cap - 12" Inlet
Semco Inc.	SCP	14	Plug / Cap - 14" Inlet
Semco Inc.	SCP	16	Plug / Cap - 16" Inlet
Semco Inc.	SCP	18	Plug / Cap - 18" Inlet

**** All items on this page are limited stock. Please verify quantities**

Fittings

<u>Manufacturer</u>	<u>Model</u>	<u>Size</u>	<u>Description</u>
Flexmaster USA	FL-4	4"	4" Spin Collar (90° straight)
Flexmaster USA	FL-5	5"	5" Spin Collar (90° straight)
Flexmaster USA	FL-8	8"	8" Spin Collar (90° straight)
Flexmaster USA	FL-10	10"	10" Spin Collar (90° straight)
Flexmaster USA	FL-12	12"	12" Spin Collar (90° straight)
Flexmaster USA	FL-14	14"	14" Spin Collar (90° straight)
Flexmaster USA	FL-16	16"	16" Spin Collar (90° straight)
Flexmaster USA	FL-18	18"	18" Spin Collar (90° straight)
<u>Manufacturer</u>	<u>Model</u>	<u>Size</u>	<u>Description</u>
Flexmaster USA	FL-SOG-4	4"	4" Flanged Spin Collar w/ Stick-On Gasket (90° straight)
Flexmaster USA	FL-SOG-6	6"	6" Flanged Spin Collar w/ Stick-On Gasket (90° straight)
Flexmaster USA	FL-SOG-8	8"	8" Flanged Spin Collar w/ Stick-On Gasket (90° straight)
Flexmaster USA	FL-SOG-10	10"	10" Flanged Spin Collar w/ Stick-On Gasket (90° straight)
Flexmaster USA	FL-SOG-12	12"	12" Flanged Spin Collar w/ Stick-On Gasket (90° straight)
Flexmaster USA	FL-SOG-14	14"	14" Flanged Spin Collar w/ Stick-On Gasket (90° straight)
Flexmaster USA	FL-SOG-16	16"	16" Flanged Spin Collar w/ Stick-On Gasket (90° straight)
Flexmaster USA	FL-SOG-18	18"	18" Flanged Spin Collar w/ Stick-On Gasket (90° straight)
Flexmaster USA	FL-SOG-20	20"	20" Flanged Spin Collar w/ Stick-On Gasket (90° straight)
<u>Manufacturer</u>	<u>Model</u>	<u>Size</u>	<u>Description</u>
Flexmaster USA	FLD-6	6"	6" Spin Collar w/ Damper (90° straight)
Flexmaster USA	FLD-8	8"	8" Spin Collar w/ Damper (90° straight)
Flexmaster USA	FLD-10	10"	10" Spin Collar w/ Damper (90° straight)
Flexmaster USA	FLD-12	12"	12" Spin Collar w/ Damper (90° straight)
Flexmaster USA	FLD-14	14"	14" Spin Collar w/ Damper (90° straight)
Flexmaster USA	FLD-16	16"	16" Spin Collar w/ Damper (90° straight)
Flexmaster USA	FLD-18	18"	18" Spin Collar w/ Damper (90° straight)
Flexmaster USA	FLD-20	20"	20" Spin Collar w/ Damper (90° straight)
<u>Manufacturer</u>	<u>Model</u>	<u>Size</u>	<u>Description</u>
Flexmaster USA	FLD-SOG-6	6"	6" Flanged Spin Collar W/ Stick-On Gasket & Damper (90° straight)
Flexmaster USA	FLD-SOG-8	8"	8" Flanged Spin Collar W/ Stick-On Gasket & Damper (90° straight)
Flexmaster USA	FLD-SOG-10	10"	10" Flanged Spin Collar W/ Stick-On Gasket & Damper (90° straight)
Flexmaster USA	FLD-SOG-12	12"	12" Flanged Spin Collar W/ Stick-On Gasket & Damper (90° straight)
Flexmaster USA	FLD-SOG-14	14"	14" Flanged Spin Collar W/ Stick-On Gasket & Damper (90° straight)
Flexmaster USA	FLD-SOG-16	16"	16" Flanged Spin Collar W/ Stick-On Gasket & Damper (90° straight)
Flexmaster USA	FLD-SOG-18	18"	18" Flanged Spin Collar W/ Stick-On Gasket & Damper (90° straight)
Flexmaster USA	FLD-SOG-20	20"	20" Flanged Spin Collar W/ Stick-On Gasket & Damper (90° straight)
<u>Manufacturer</u>	<u>Model</u>	<u>Size</u>	<u>Description</u>
Flexmaster USA	CB-SOG-6	6"	6" Bellmouth w/ Stick-On Gasket (90° Conical)
Flexmaster USA	CB-SOG-8	8"	8" Bellmouth w/ Stick-On Gasket (90° Conical)
Flexmaster USA	CB-SOG-10	10"	10" Bellmouth w/ Stick-On Gasket (90° Conical)
Flexmaster USA	CB-SOG-12	12"	12" Bellmouth w/ Stick-On Gasket (90° Conical)
Flexmaster USA	CB-SOG-14	14"	14" Bellmouth w/ Stick-On Gasket (90° Conical)
Flexmaster USA	CB-SOG-16	16"	16" Bellmouth w/ Stick-On Gasket (90° Conical)
Flexmaster USA	CB-SOG-18	18"	18" Bellmouth w/ Stick-On Gasket (90° Conical)

**** All items on this page are limited stock. Please verify quantities**

Fittings Continued

<u>Manufacturer</u>	<u>Model</u>	<u>Size</u>	<u>Description</u>
Flexmaster USA	CBD-SOG-6	6"	6" Bellmouth Stick-On Gasket w/ Damper (90° Conical)
Flexmaster USA	CBD-SOG-8	8"	8" Bellmouth Stick-On Gasket w/ Damper (90° Conical)
Flexmaster USA	CBD-SOG-10	10"	10" Bellmouth Stick-On Gasket w/ Damper (90° Conical)
Flexmaster USA	CBD-SOG-12	12"	12" Bellmouth Stick-On Gasket w/ Damper (90° Conical)
Flexmaster USA	CBD-SOG-14	14"	14" Bellmouth Stick-On Gasket w/ Damper (90° Conical)
Flexmaster USA	CBD-SOG-16	16"	16" Bellmouth Stick-On Gasket w/ Damper (90° Conical)
<u>Manufacturer</u>	<u>Model</u>	<u>Size</u>	<u>Description</u>
Flexmaster USA	STOCD-6	6"	6" Flanged Side Takeoff Gasket w/ Damper (90° Conical, Rectangular to Round)
Flexmaster USA	STOCD-8	8"	8" Flanged Side Takeoff Gasket w/ Damper (90° Conical, Rectangular to Round)
Flexmaster USA	STOCD-10	10"	10" Flanged Side Takeoff Gasket w/ Damper (90° Conical, Rectangular to Round)
Flexmaster USA	STOCD-12	12"	12" Flanged Side Takeoff Gasket w/ Damper (90° Conical, Rectangular to Round)
Flexmaster USA	STOCD-14	14"	14" Flanged Side Takeoff Gasket w/ Damper (90° Conical, Rectangular to Round)

**** All items on this page are limited stock. Please verify quantities**

**Call us at 630-833-3838
or visit us at
www.hatchell.com**

Revision Date: February 8, 2019