



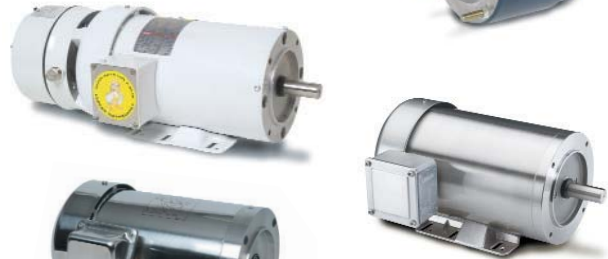
More *Than Just a Motor Company*



STOCK PRODUCTS

QUICK REFERENCE GUIDE

AC MOTORS



Inverter-Duty Insulation System
Standard on all LEESON 3 phase
NEMA frame motors 1 HP and larger



General Purpose Motors

SINGLE PHASE

THREE PHASE

Rigid Base	1/6 thru 10 HP	1/6 thru 350 HP
C Face	1/4 thru 10 HP	1/4 thru 100 HP
Resilient Base.....	1/4 thru 2 HP	1/3 thru 5 HP
Premium Efficiency WATTSaver® ...	1/4 thru 2 HP	1/3 thru 200 HP

Ag Motors

General Purpose Farm Duty	1/3 thru 10 HP	—
Fan Duty	1/4 thru 3 HP	3/4 thru 3 HP
Industry-AG.....	1/3 thru 2 HP	—
Special Application	1/4 thru 15HP	1 thru 15HP

Brakemotors.....

1/3 thru 1 HP	1/3 thru 10HP	
C Face Coupler Brakes	1/3 thru 3 HP	1/3 thru 50HP
BRAKEKIT™	1/3 thru 3 HP	3/4 thru 5 HP
(For field modification of TEFC motors to brakemotors)		
WASHGUARD White		
Epoxy Coated.....	—	1/3 thru 2 HP
All-Stainless WASHGUARD	—	1/2 thru 1 HP

Chemical Service Motors

Cast Iron, Epoxy Painted	—	3 thru 20 HP
All-Stainless WASHGUARD	1/3 thru 2 HP	1/2 thru 10 HP
WASHGUARD SST	—	1/3 thru 3 HP
Cast Iron, Adaptable for Chemical Service with Severe Duty Kit	—	25 thru 100 HP

Compressor Duty Motors...1 thru 10 HP

1 thru 20 HP

Explosion Proof Motors

Steel Frame	1/3 thru 2 HP	1/3 thru 5 HP
Cast Iron Frame	—	3 thru 250 HP

Fan & Blower Motors

General Purpose	1/4 thru 2 HP	1/3 thru 3 HP
PSC Type.....	1/4 thru 1 HP	—
Two-Speed.....	1/4 thru 1 HP	1/2 thru 1½ HP
TEAO	3/4 thru 3 HP	3/4 thru 3 HP
HVAC Blower.....	—	1/3 thru 5 HP
Condenser Fan.....	—	1 thru 1½ HP
FHP Commercial Duty	1/4 thru 1/2 HP	—
Performa +	1/4 thru 1/2 HP	—

AC MOTORS

SINGLE PHASE THREE PHASE

Food Processing Washdown-Duty Motors

WASHGUARD White Epoxy Coated	1/3 thru 2 HP	1/4 thru 15 HP
WASHGUARD II Paint Free	—	1/2 thru 2 HP
All Stainless WASHGUARD	1/3 thru 2 HP	1/2 thru 10 HP
WASHGUARD SST	—	1/3 thru 3 HP

IEC Metric Motors — .018 kW thru 45 kW

Instant Reversing Motors 1/3 thru 3/4 HP —

Poultry Motors 1/4 thru 3 HP 3/4 thru 3 HP

Inverter-Duty Motors


WATTSaver®	—	1/3 thru 200 HP
SPEEDMASTER®	—	1 thru 350 HP
Sub-FHP	—	1/15 thru 1/4 HP

Pressure Washer Motors 3/4 thru 5 HP —

Pump Motors

Jet Pump	1/2 thru 3 HP	3/4 thru 3 HP
JM Type	1 thru 10 HP	1 thru 50 HP
JP Type	5 thru 10 HP	1½ thru 50 HP
Swimming Pool	1/2 thru 3 HP	—
JM Type WASHGUARD White Epoxy	—	1 thru 15 HP
JM Type All Stainless WASHGUARD	—	1 thru 10 HP

Special Power/Voltage Motors

50 Hz 	1/3 thru 5 HP	1/2 thru 150 HP
200-208 Volt	—	3/4 thru 10 HP
575 Volt	—	1/3 thru 150 HP

Woodworking Motors 3/4 thru 4 HP —

Two-Speed Motors — 1 thru 10 HP

Quick-turnaround multi-speed and low-speed specials	—	1 thru 200 HP
--	---	---------------



DC MOTORS



SCR-Rated, 90 & 180 Volts, Permanent Magnet

Sub-FHP1/25 thru 1/4 HP
 NEMA Frame1/4 thru 3 HP

Low-Voltage, 12 & 24 Volts, Permanent Magnet

Sub-FHP1/20 thru 1/3 HP
 NEMA Frame1/4 thru 1 HP

Food Processing Washdown-Duty

Sub-FHP, 90 Volts1/8 thru 1/4 HP
 WASHGUARD SCR-Rated, NEMA Frame1/4 thru 1½ HP
 All Stainless, SCR-Rated, NEMA Frame1/4 thru 1 HP
 Sub-FHP, Low Voltage (12V)1/8 thru 1/4 HP

Explosion Proof

SCR-Rated, NEMA Frame1/3 thru 3/4 HP

IEC Metric SCR-Rated & Low Voltage

B5 Mounting0.06 thru 0.25 kW
 B14 Mounting0.05 thru 0.25 kW
 Convertible B3, B5, B14 Mounting0.25 thru 2.2 kW
 WASHGUARD, SCR-Rated0.37 thru 0.55 kW
 All Stainless, SCR-Rated0.25 thru 0.75 kW

ADJUSTABLE SPEED AC & DC DRIVES



Micro Series AC Inverters1/2 thru 150 HP

WASHGUARD1/2 thru 60 HP
 WASHGUARD All Stainless1/2 thru 20 HP

SM Plus Sub-Micro AC Inverters1/4 thru 25 HP
 SM Vector Series AC Inverters1/2 thru 10 HP
 SM Series AC Inverters1/3 thru 15 HP

FHP Series Ac Inverters1/4 thru 1 HP

DC SCR ControlsSub-FHP thru 3 HP
 DC Regenerative Controls1/4 thru 2 HP
 DC Pulse Width Modulated ControlsSub-FHP thru 1/4 HP

Low Voltage Controls12/29V thru 120 Amp
 Low Voltage Controls36/48V thru 100 Amp

GEAR PRODUCTS



Worm Reducers & Gear+Motors™



- Premium cast iron worm reducers to 35 input HP
- Viton® seals, high-temperature synthetic oil standard
- Extensive range of mounting options & accessories
- Single or double reduction
- WASHGUARD to 7 input HP
- All-Stainless WASHGUARD selections to 9 HP
- Drop-in replacement for most competitive brands
- AC or DC Gear+Motors™ from stock
- Ratio multipliers to 13 input HP



- Aluminum housing designed for compactness and light weight
- Up to 7½ input HP
- NEMA IEC inputs

- Inch and metric output shafts
- Modular construction, wide array of mountings for maximum flexibility
- Single or double reduction
- Ideal OEM solution
- AC or DC Gear+Motors™ from stock



Inline Reducers & Gearmotors

- Industrial-duty aluminum housings
- 1/4 thru 13 input HP
- Single stage ratios 1.30:1 to 10.8:1
- Two-stage ratios to 63:1
- Three-stage ratios to 278:1
- Modular base and flange mounts interchange with most other popular brands, including SEW, Nord, David Brown, Dodge, Brook Hansen and more
- AC or DC Gear+Motors™ from stock



Sub-Fractional HP Gearmotors

- AC Parallel Shaft12 thru 1105 lb. in. output torque
- Inverter Rated12 thru 391 lb. in. output torque
- AC Right-Angle14 thru 113 lb. in. output torque
- Inverter Rated54 thru 238 lb. in. output torque
- AC Single Phase or Three Phase available*
- DC Parallel Shaft10 thru 1112 lb. in. output torque
- WASHGUARD White Epoxy25 thru 353 lb. in. output torque
- DC Right-Angle5 thru 135 lb. in. output torque
- WASHGUARD White Epoxy25 thru 135 lb. in. output torque
- DC SCR or Low Voltage available*



CUSTOMIZED PRODUCTS

Custom Motors, Gearboxes & Gearmotors

LEESON is a leading designer and manufacturer of application-specific AC and DC motors and gearmotors in sub-fractional, fractional and integral horsepower sizes. We offer a database of over 30,000 custom designs, experienced application and design engineering teams, and the unique collaborative environment of the LEESON Design Center to ensure the best, most cost-effective custom motor solution.



Custom Multi-Speed & Low-Speed Motors

LEESON's PDQ Modular Production Program utilizes specially designed and standard components to make almost any imaginable NEMA frame multi-speed or low-speed motor available when you need it. We pride ourselves on fast turnaround times on highly customized motors.

Custom motors include two, three and four-speed motors and speed ranges of 900, 720, 600, 450 and 300 RPMs. We also specialize in non-standard shaft designs.

For quotations, availability and application assistance, phone toll-free to our Canadian manufacturing facility at 1-800-463-1797.



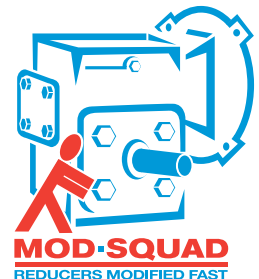
MODIFIED PRODUCTS

Quick-turnaround stock motor modifications are available through the LEESON Motor Mod-Squad. Adding cords or switches, changing mountings, extending leads and incorporating various severe-duty features are among the many standard modifications offered.



For complete stock products information, visit our online technical database at www.leeson.com/findaproduct.

Modified stock gear reducers are offered on a quick-ship basis through the LEESON Gear Mod-Squad. A wide array of mountings, shaft extensions and other changes are available for 600 Series IRONMAN® reducers. In addition, modified stock Gear+Motor™ packages can be created, drawing on LEESON's extensive range of NEMA C face motors.



CUSTOMER FRIENDLY WEBSITE

LEESON's website is a user friendly site that offers the features listed below. Our customers also have access to LEEBIZ™, which is our e-business center and provides LEESON Distributor Partners with 24 hour, seven days a week access to stock availability, account status and product features.



1 Products

- View our off-the-shelf product offerings of nearly 4,000 items which include: AC and DC motors, sub-fhp motors and gearmotors, AC and DC adjustable speed drives, NEMA Gear+Motors™, and right-angle gear reducers.

2 How To Buy

- This field shows information on how to locate LEESON's nearest sales offices and warehouses as well as our authorized distributors.

3 Service & Support

- Locate our authorized service centers by state or country, or use our "search by zip code" field which will locate our nearest authorized service center to your location within a 100-mile radius. This section also lists our product warranty policy as well as outline some simple motor troubleshooting guides.

4 Literature

- View product sales bulletins and catalogs or download in Adobe Acrobat PDF format.
- View or download product manuals which include our AC and DC controls, gearboxes and brake kits, as well as technical information, including our motor basic training manual and product troubleshooting guides.
- Request literature field, where you can request our product literature to be mailed to you.

5 Contact Us

- Locations of our corporate offices in the USA, Canada, Europe and China.
- Ask LEESON questions on our product offerings and/or services.
- Comment to LEESON on our web page or offer suggestions on how we can improve LEESON.COM.

SPECIAL MOTOR ACTION RESPONSE TEAM

SMARTeam™



Immediate solutions for unique applications. Need a custom motor in a matter of days? Hours? Let our SMARTeam™ work with your engineers to deliver a solution.

The SMARTeam™ is our Special Motor Action Response Team, a group of experienced LEESON professionals including design, process and quality engineers along with sales application specialists.

Their mission is to collectively work with you to define and deliver the best motor, drive and/or gearbox option that will cost-effectively address your every need.

To find out more, simply call your local LEESON sales office and turn your idea into reality.



DISTRICT SALES OFFICES & WAREHOUSES

LEESON District Sales Offices & Warehouses can provide complete information including price and availability on both standard stock and special motors.

- **ARKANSAS, Little Rock**
District Mgr., Phil Newby
501/568-6468
Fax: 501/568-6604
- **CALIFORNIA, Los Angeles**
District Mgr., Felix Wilson
323/278-7979
Fax: 323/278-7955
- **CALIFORNIA, San Francisco**
District Mgr.,
Dave Richardson
925/931-0749
Fax: 925/931-0759
- **COLORADO, Denver**
District Mgr.,
Mike Kannawin
303/331-6500
Fax: 303/331-6510
- **CONNECTICUT, Hartford**
District Mgr., Bob Maher
860/646-9665
Fax: 860/643-2982
- **FLORIDA, Tampa**
District Mgr., Bill Taylor
813/740-2571
Fax: 813/663-9104
- **GEORGIA, Atlanta**
District Mgr., Walter Brooks
770/933-0453
Fax: 770/933-0549
- **ILLINOIS, Chicago**
District Mgr., Mike Miller
630/458-9511
Fax: 630/458-1923
- **INDIANA, Indianapolis**
District Mgr.,
Mark Rodman
317/776-2600
Fax: 317/776-2007
- **IOWA, Des Moines**
District Mgr.,
John Marshalla
952/939-0115
Fax: 952/935-8399
- **KANSAS, Kansas City**
District Mgr., Pat Donnelly
913/599-6983
Fax: 913/599-6987
- **MARYLAND/Baltimore**
District Mgr., Craig Brisbane
570/325-3684
Fax: 570/325-3870
- **MICHIGAN, Grand Rapids**
District Mgr., Greg Norris
616/249-8430
Fax: 616/249-8628
- **MINNESOTA, Minneapolis**
District Mgr., John Marshalla
952/935-8273
Fax: 952/935-8399
- **MISSOURI, St. Louis**
District Managers
Pat and Ken Anvender
314/714-1460
Fax: 314/714-1461
- **NEW JERSEY/METRO NEW YORK/LONG ISLAND**
(Plainfield, NJ 18229)
Contact: Dave Beck
570/325-3684
Fax: 570/325-3870
- **NEW YORK, Syracuse**
District Mgr., Chris Everett
315/431-4536
Fax: 315/431-4541
- **NORTH CAROLINA, Charlotte**
District Mgrs.,
Steve McAbee
and Doug Landgraf
803/396-8200
Fax: 803/396-8208
- **OHIO, Cincinnati**
District Mgr., Ken Simko
513/755-1000
Fax: 513/755-1081
- **OHIO, Cleveland**
District Mgr., Matt Simko
440/951-5117
Fax: 440/975-3575
800/331-2911 (W.P.A, WV)
- **OKLAHOMA, Oklahoma City**
Contact: Owen Stone
405/348-5700
Fax: 405/348-0600
- **PENNSYLVANIA, Allentown/Philadelphia**
District Mgr., Craig Brisbane
570/325-3684
Fax: 570/325-3870
- **TEXAS, Dallas**
District Mgr., Homer Rodden
972/245-2017
Fax: 972/245-2328
- **TEXAS, Houston**
Contact,
Donnie Heckler
713/952-5337
Fax: 972/245-2328
- **UTAH, Salt Lake City**
District Mgr., Dennis Vest
800/730-5290
Fax: 303/331-6510
- **WASHINGTON, Seattle**
District Mgr.,
Amorette Gent
425/775-3504
Fax: 425/775-6706
- **WISCONSIN, Milwaukee**
District Mgr., Tom Bares
414/475-9222
Fax: 414/475-9267
- **INTERNATIONAL**
International Sales
Administrator,
Sue Kastner
WISCONSIN, Grafton
(+1) 262/377-8810
Fax: (+1) 262/377-3440
- **ASIA**
■ **CHINA, Shanghai**
(+86) 21-625-317-00
Fax: (+86) 21-625-587-07
- **CENTRAL AMERICA, SOUTH AMERICA & CARIBBEAN**
■ **FLORIDA, Miami**
Contact: Manny Garcia, Jr.
(+1) 305/220-4423
Fax: (+1) 305/220-5945
- **EUROPE**
■ **ITALY, Bologna**
(+39) 051-731-487
Fax: (+39) 051-734-943

LEESON CANADA

- **ALBERTA, Edmonton**
Branch Mgr.,
Mike Strenkowski
780/437-3380
Fax: 780/434-3448
- **BRITISH COLUMBIA, Vancouver**
Branch Mgr.,
Jeff Male
604/941-0352
Fax: 604/941-0659
- **MANITOBA, Winnipeg**
Branch Mgr., Charlie Vogel
204/786-6802
Fax: 204/786-6934
- **NEW BRUNSWICK, Moncton**
Branch Mgr., Ken Sheehan
506/383-8883
Fax: 506/383-8887
- **ONTARIO, Toronto**
National Sales Mgr.,
Frank Pesce
905/670-4770
Fax: 905/670-4378
- **ONTARIO, Hanover**
Branch Mgr.,
Doug Stafford
800/463-1797
Fax: 800/225-9007
- **QUEBEC, Montreal**
Branch Mgr.,
Richard Haines
514/337-8020
Fax: 514/337-0773

- SALES OFFICE AND WAREHOUSE □ SALES OFFICE ONLY



LEESON ELECTRIC

GRAFTON, WISCONSIN 53024-0241 U.S.A.
TEL (262)377-8810 FAX (262)377-9025 www.leeson.com

A REGAL-BELOIT COMPANY

