



BAMBOO - DESIGN FOR SUSTAINABILITY

DESIGN EXCELLENCE AWARD FOR STUDENTS

"Bamboo - Design for sustainability" invites proposals from students to design for the new India. We welcome entries that are innovative, enterprising and revolutionary. The idea should relate to the environment- culturally, geographically and socio-economically. As the cities are expanding and becoming more crowded there is a growing need for better products that are environmentally sensitive, convey a modern lifestyle in addition to be socially relevant. **Apply your innovative mind to Design for sustainability using Bamboo.**

Strategy Partner



Supported by



Pune Regional Chapter





BAMBOO - DESIGN FOR SUSTAINABILITY

DESIGN EXCELLENCE AWARD FOR STUDENTS

CATEGORIES :

STRUCTURE : 100 sq ft stand-alone structure (Kiosk, canopy, entrance gate, meeting space, experiential space) .Something which has a utility value. Structure has to be considered without grouting in the ground.

FURNITURE : Any furniture item for interior or exterior with utility value

PRODUCT : A utility product for the contemporary home / office, home tableware, office table accessory, lampshade, home/office accessory product.

Designs should have
minimum 70 % bamboo.

EVALUATION CRITERIA :

Entries has to be contemporary / modern with high utility value

Concept evaluation

1. Problem/s identification and definition.
2. Creativity of the proposed solution.
3. Practicality of the solution.
4. Styling and detailing.
5. Clear and concise presentation.

ELIGIBILITY :

Students above 18 years of age.





BAMBOO - DESIGN FOR SUSTAINABILITY

**DESIGN EXCELLENCE
AWARD FOR STUDENTS**

Participation from 55 Institutions across India

151 Registrations 3 categories

18 Awards



BAMBOO - DESIGN FOR SUSTAINABILITY

DESIGN EXCELLENCE AWARD FOR STUDENTS

Cash Prize

1st : Rs 10,000

2nd : Rs 8,000

3rd : Rs 6,000

Certificates





BAMBOO - DESIGN FOR SUSTAINABILITY

DESIGN EXCELLENCE AWARD FOR STUDENTS

Jury Panel



Ayush Kasliwal
AKFD Studio, Jaipur



Rebecca Reubens
Rhizome, Ahmedabad



Vaibhav Kale
Wondergrass, Nagpur



BAMBOO - DESIGN FOR SUSTAINABILITY

**DESIGN EXCELLENCE
AWARD FOR STUDENTS**

Category

Product



BAMBOO - DESIGN FOR SUSTAINABILITY

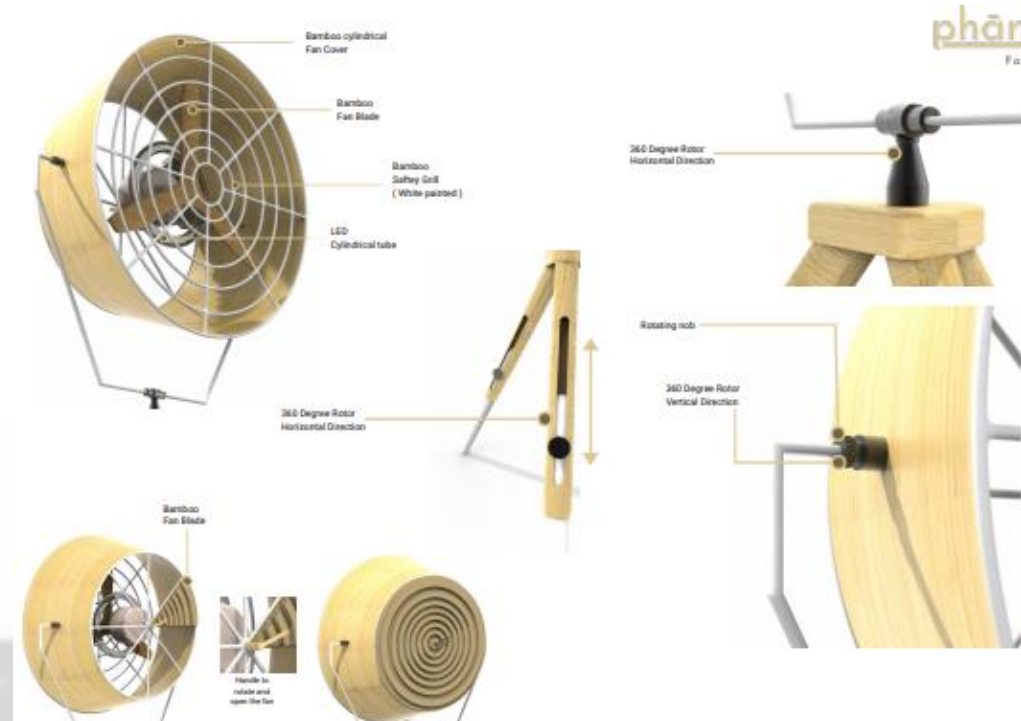
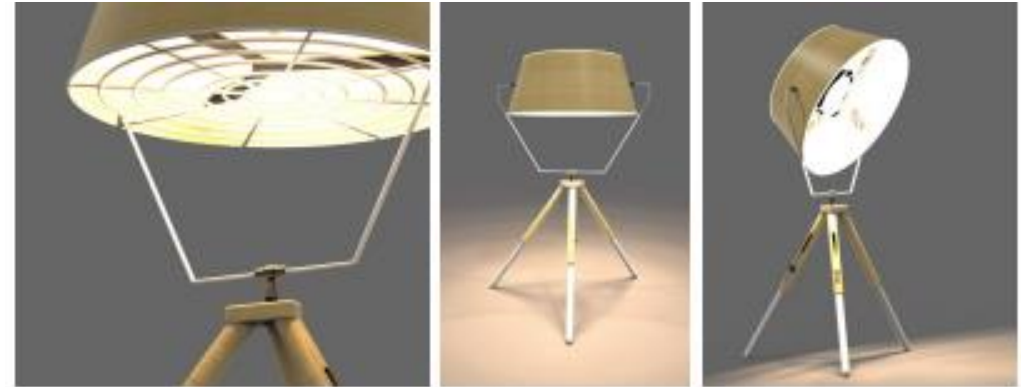
**DESIGN EXCELLENCE
AWARD FOR STUDENTS**

Category : **Product**
Maharashtra

1st Prize

Category : Product , Maharashtra

Phan, Adjustable fan + lamp
Avnish Poonia, Nilesh Gadre
MIT institute of Design, MIT ADTU



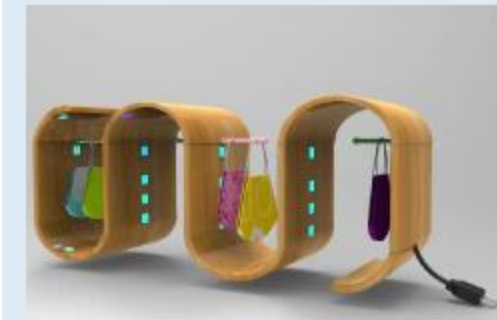
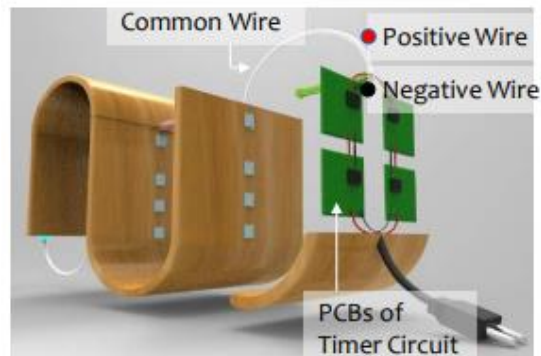
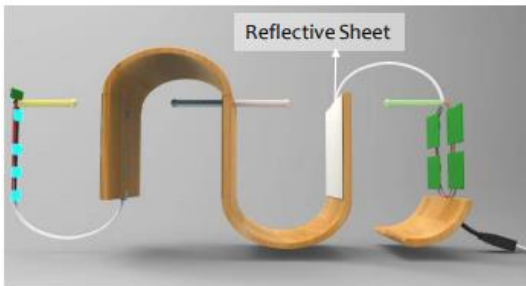
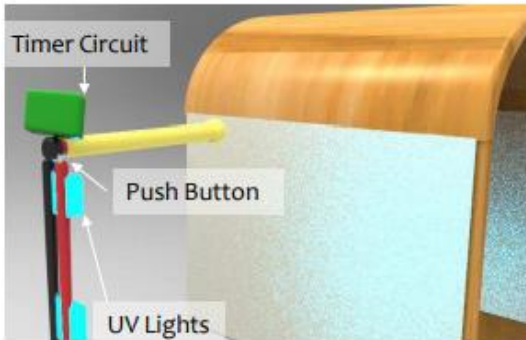
2nd Prize

Category : Product , Maharashtra

M Care, Mask Sanitizer stand

Riya Patil , Siddhi Patil , Shriya Deshpande

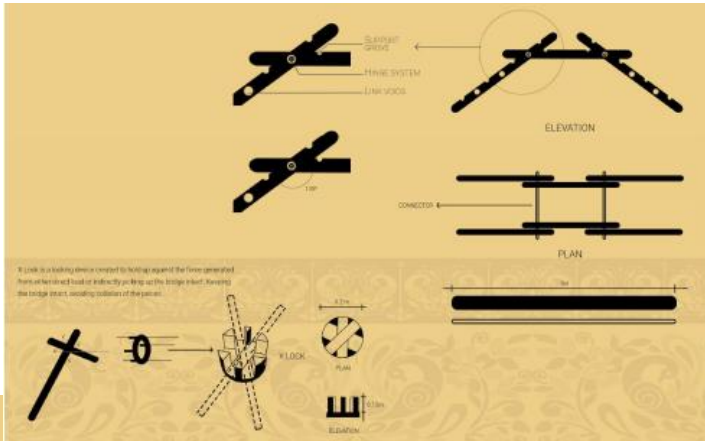
NDMVP College of Architecture and Center for Design, Nashik



Proteana, Multi utility product

Prashant Kashyap, Mihir Retharekar, Sairaj Ashtekar

MIT School of Architecture, MIT ADTU



PROTEANA

The picnic bench can be assembled with a single product, i.e. 6 length bamboos and 8 span (sliced/thin) bamboos.

It consists of 100% bamboo units which can be easily packed and carried around in a vehicle. No grouting is required as the structure is self sustained.

It can carry the load of upto 2 adults sitting on either side.

150kg



TENT

It Lock can even be used for level chamber level leveling. Even allowing for displacing the tent as a whole to short distances without collapsing it.

Metal pipe housing is used to all joints with thin bamboo pieces.

1.1m
2.6m
PLAN



BAMBOO - DESIGN FOR SUSTAINABILITY

**DESIGN EXCELLENCE
AWARD FOR STUDENTS**

Category : **Product**

Rest of India outside Maharashtra

1st Prize

Category : Product , Rest of India

Sound Curve,

Bamboo Body Bluetooth Earphone

JOY SEBASTIAN VALATHUPARAMBIL

NID, Ahmadabad



2nd Prize

Category : Product , Rest of India

Shanti Tiles,

Sound proofing tile in bamboo

Vishal Deoriya, Chaitanya Solanki

Indian Institute of Technology Hyderabad



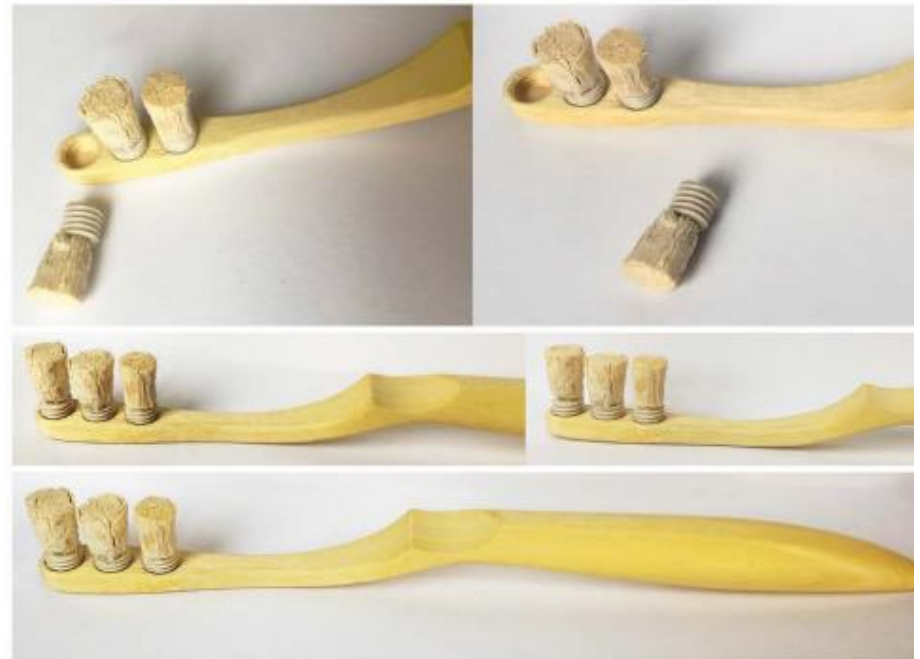
New Meaning for Old Knowledge

Category : Product , Rest of India

Bamboo handle + Miswak (Teeth cleaning twig) - Brush

Sejal Chagede

Lancaster University, USA





BAMBOO - DESIGN FOR SUSTAINABILITY

**DESIGN EXCELLENCE
AWARD FOR STUDENTS**

Category

Furniture



BAMBOO - DESIGN FOR SUSTAINABILITY

**DESIGN EXCELLENCE
AWARD FOR STUDENTS**

Category : **Furniture,**
Maharashtra

1st Prize

Category : Furniture , Maharashtra

Muse Bamboo Lounge

Sumit Ranjan Kumar, IDC IIT Mumbai



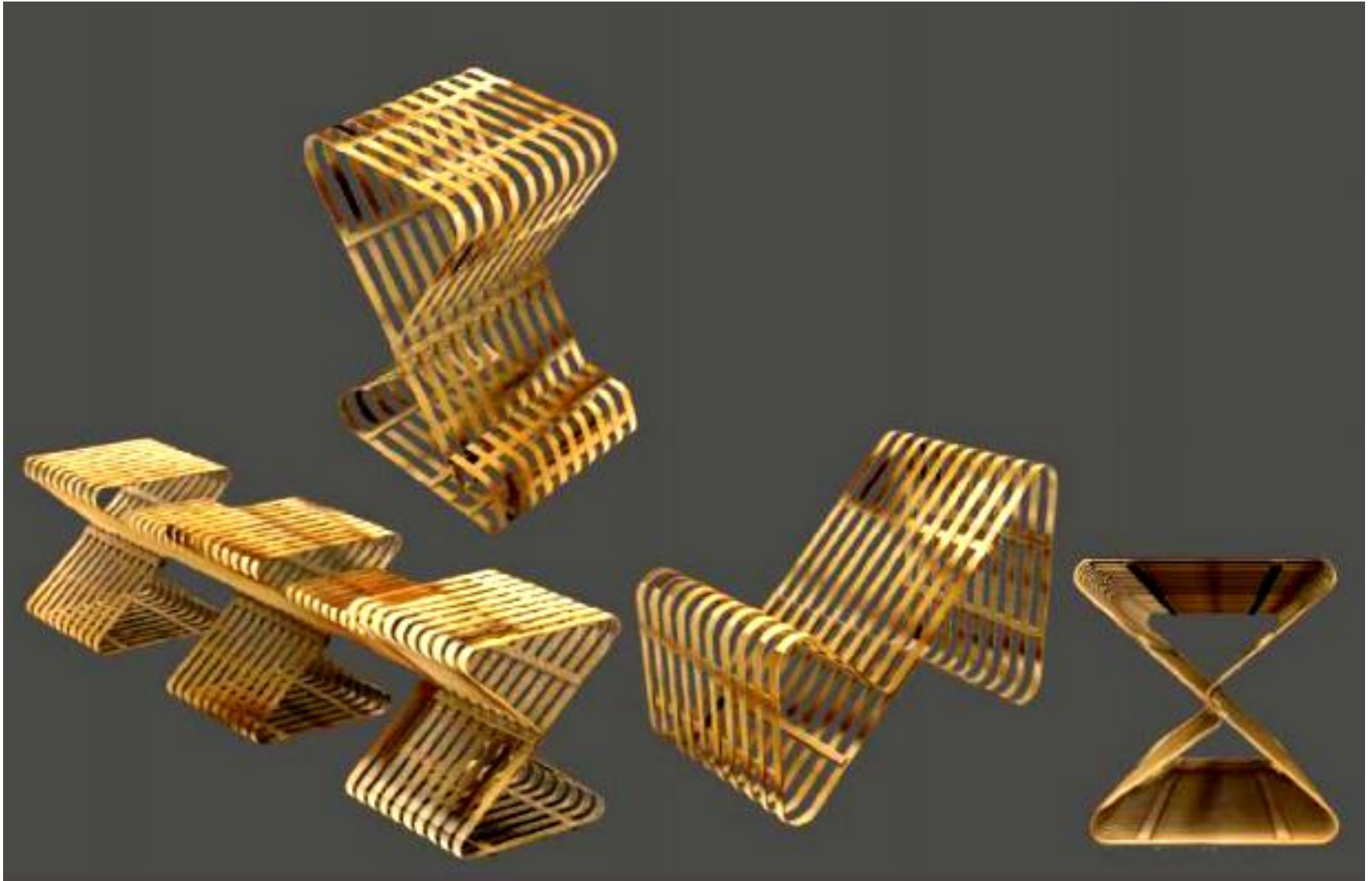
Muse Lounge celebrates bamboo as a **new design material** in combination with wood in which 2 m long slivers are used repeatedly to create the form and harmony makes it dominant material overall, and is unique in its way and hence pushes the boundary!

2nd Prize

Mageru: Bent Bamboo Furniture Series

Category : Furniture , Maharashtra

Nidhi Nimodia, MIT Institute of Design, MIT ADT University , Pune



SUSTAINABLY SAVING : Multipurpose Furniture

AADYA PEDANEKAR , KHUSHAL JAJU , SHREENATH PAWATE

B.K.P.S. College of Architecture, Pune

Not allowed to stick anything on the wall?

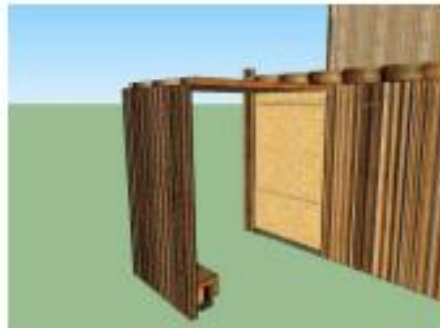
Insufficient storage space?

Heavy furniture?

Not enough space to play or do projects or hangout ?

Environment harming furniture ?

High maintenance furniture ?



Jali to hang photos, art, etc

Storage solution

Light weight

Desk that slides inside

Sustainable and eco-friendly

Low maintenance



BAMBOO - DESIGN FOR SUSTAINABILITY

**DESIGN EXCELLENCE
AWARD FOR STUDENTS**

Category : **Furniture,**
Rest of India outside Maharashtra

1st Prize

Category : Furniture , Rest of India

Nomad, A portable stool
Himanshu Singh, NID



All the four parts of assembly are connected through a nylon string, making NOMAD easy to disassemble.

2nd Prize

Category : Furniture , Rest of India

Sukoon, Furniture

Abhishek Gulaskar, Nallaballi Rajesh,
NID, Ahmadabad

cotton Tape weaving Detail



Armrest Detail



L Split Bamboo Joinery Detail



Backrest Detail



3rd Prize

Category : Furniture , Rest of India

RAAHAT , Single Bed

Swati Chitkara , NID, Ahmadabad





BAMBOO - DESIGN FOR SUSTAINABILITY

**DESIGN EXCELLENCE
AWARD FOR STUDENTS**

Category

Structure



BAMBOO - DESIGN FOR SUSTAINABILITY

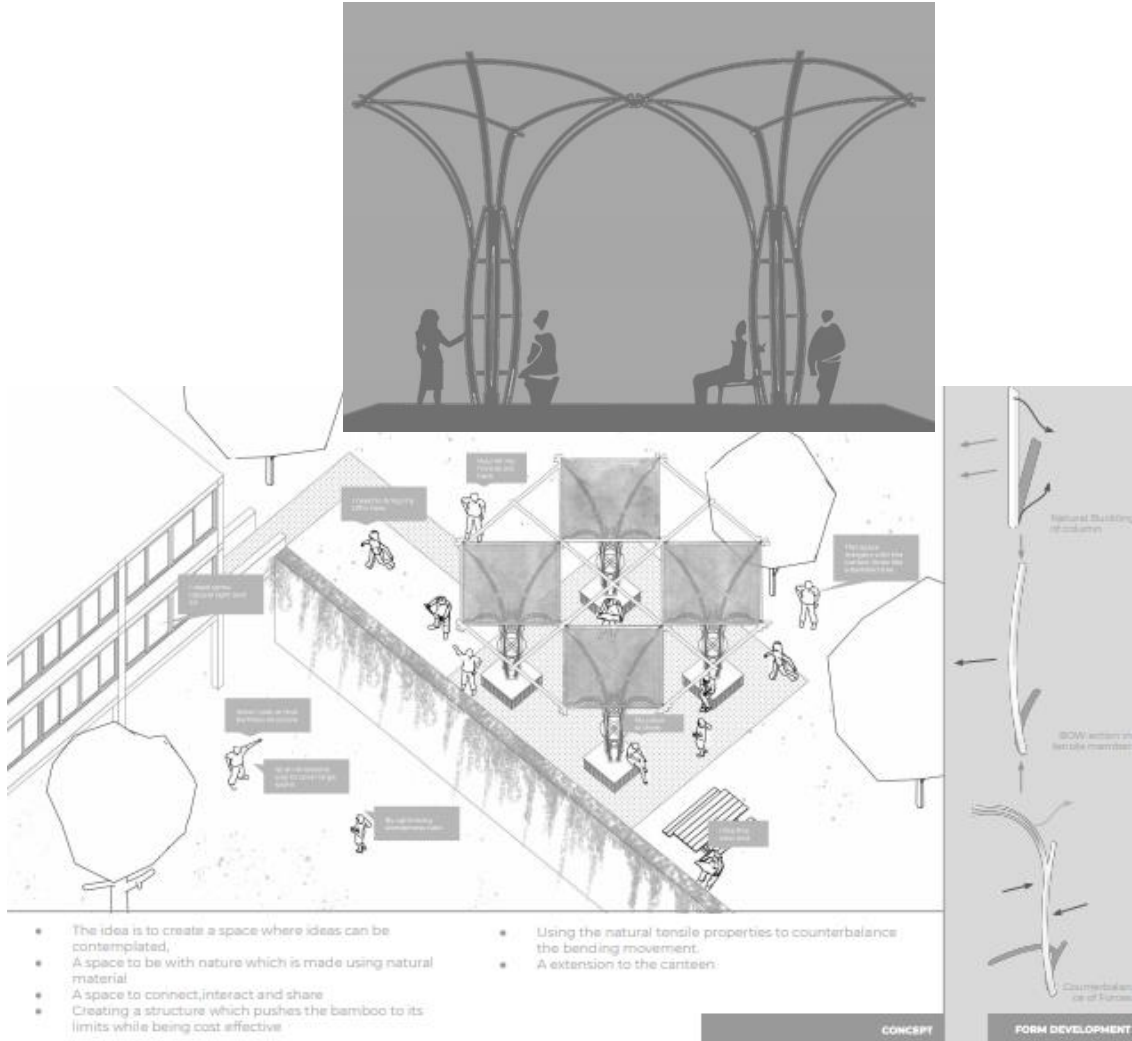
**DESIGN EXCELLENCE
AWARD FOR STUDENTS**

Category : **Structure,**
Maharashtra

Idea Pavilion, Split Bamboo

Devendra Jadhav, Manas Joshi, Mukul Phansalkar

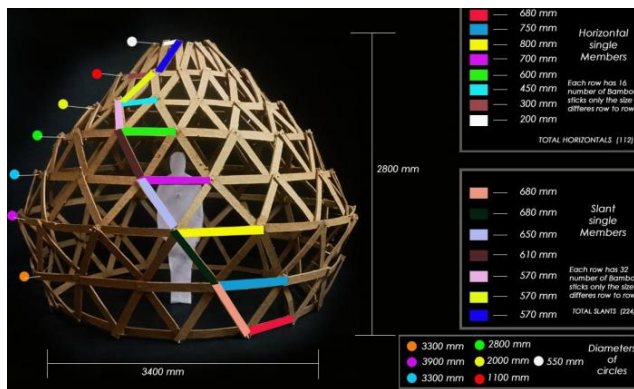
VIT's, Padmabhushan Dr Vasandada Patil College of Architecture, Pune



Bamboo Pavallion

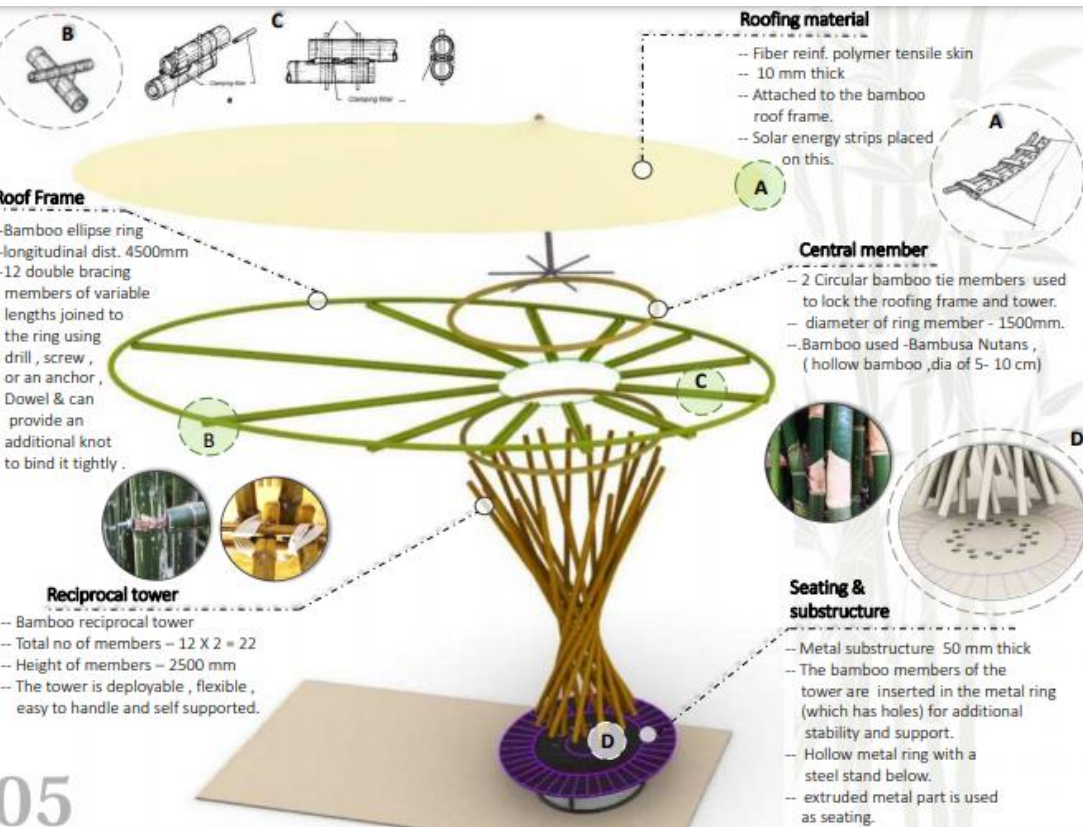
Cheeti Sriram , Cheekoti Vivek

VIT's, Padmabhushan Dr Vasandada Patil College of Architecture



Smart Shelter

Aditi Yuvraj Dhorde , Anuja R. Kale, Ayushi S. Toraskar
 MKSS's , Bhanuben Nanavati, College of Architecture, Pune





BAMBOO - DESIGN FOR SUSTAINABILITY

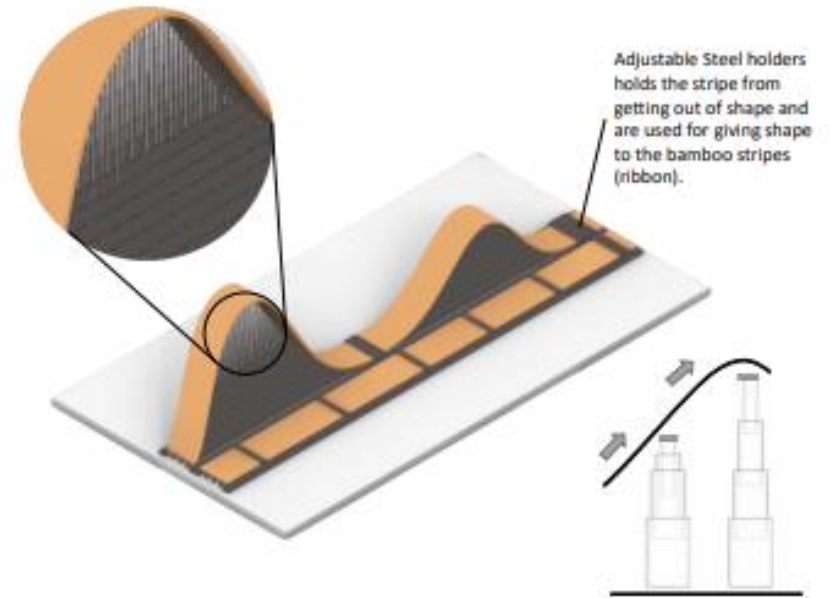
**DESIGN EXCELLENCE
AWARD FOR STUDENTS**

Category : **Structure**

Rest of India outside Maharashtra

Se Dai, Experience Kiosk

Merun Jyoti Deka , Jogi Suresh Kumar
AMITY UNVERSITY, Kolkata



Aluminum frames which are holding the whole structure.

Bamboo boards are used for supporting the stripes. As they light and strong .

when the stripes are pulled up inside the space there is a formation of patterns in the side panels.

Extendable sticks made of bamboo, helps the stripes getting the preferred height, which are connected to the stripes through magnets which makes the stripes movable.

Openable side panels . Translucent material (Bamboo Terry Fabric) helps to create a glowing effect .

The bamboo laminated stripes can be shaped according to needs.



2nd Prize

Category : Structure , Rest of India

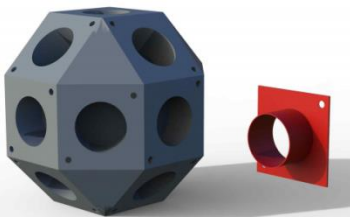
B'mukh, Universal Bamboo Connector
Vishal Deoriya, Chaitanya Solanki
Indian Institute of Technology Hyderabad



Podium



Sofa

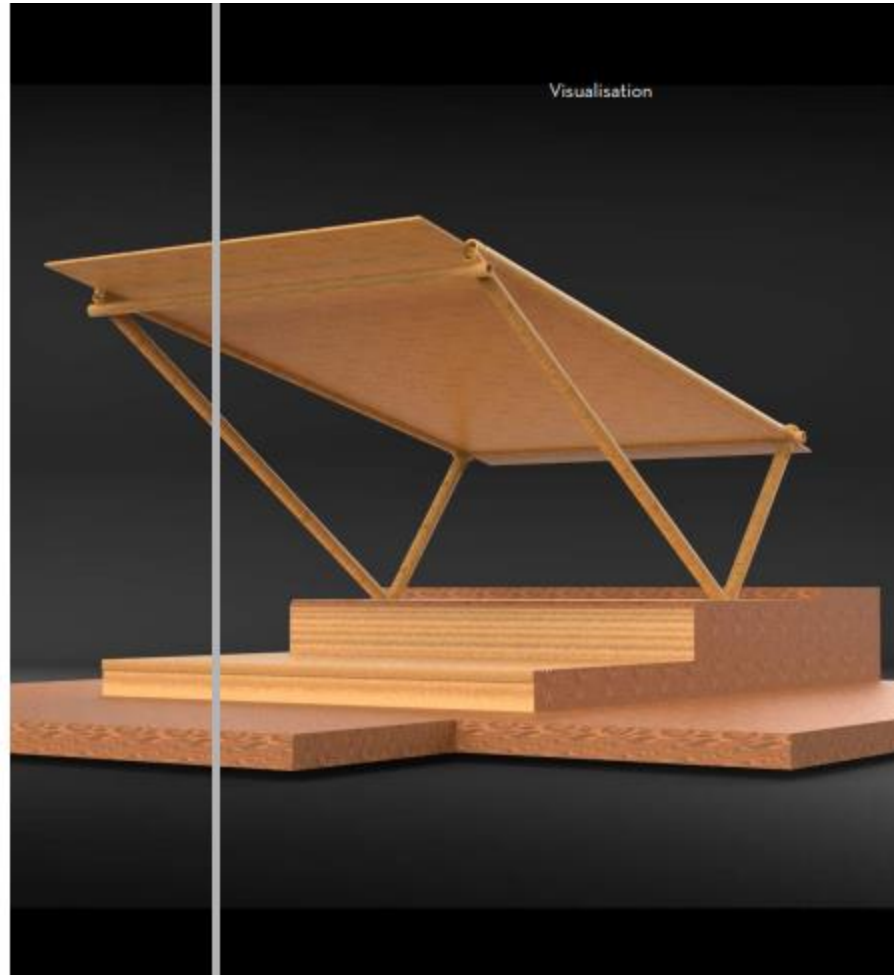


3rd Prize

Category : Structure , Rest of India

Speaking Bamboo, Seating Space

Rathin Samir Shah, Sushant Kumar Singh
Anant National University, Ahmadabad





BAMBOO - DESIGN FOR SUSTAINABILITY

DESIGN EXCELLENCE AWARD FOR STUDENTS

Mr V Giriraj
Chief Executive Officer,
Maharashtra Bamboo Promotion Foundation, Mumbai

Strategy Partner



Supported by



Pune Regional Chapter

