

STUDY GUIDE

for

Rabbit



RABBIT STUDY GUIDE

TABLE OF CONTENTS

<u>Subject</u>	<u>Page</u>
Read and Heed (FYI)	1-2
Rabbit Level I – How to Prepare for Small Animal Expo.....	3
Rabbit Level II – How to Prepare for Small Animal Expo	4
Rabbit Level III – How to Prepare for Small Animal Expo	5
Rabbit Level IV – How to Prepare for Small Animal Expo.....	6
Glossary of Terms Applied to Rabbits (Level 1).....	7-8
Glossary of Terms Applied to Rabbits (Levels I, & II).....	9
Glossary of Terms Applied to Rabbits (Levels III-IV – Study all terms)	10
Diseases	11-13
Rabbit Parts	14
Fair Entry Form.....	15
Judging Rabbits.....	16
Judging Illustrated.....	17
Type Profile of Rabbits.....	18
Now Let’s Judge a Class.....	19
Sample Reasons	20
Keep or Cull	21
Judging Meat Pens	22
Showmanship Score Sheet	23
Feed and Equipment ID	24
Quality Assurance Program	25-26

SUGGESTED READING

RAISING BETTER RABBIT AND CAVIES (Official Guide Book of the American Rabbit Breeders Association)

RABBIT COAT COLOR GENETICS By Glenna M. Huffmon

RABBIT PRODUCTION By Cheeke/Patton/Lukefahr/McNitt

RABBIT STUDY GUIDE

ALL LEVELS READ and HEED

Did you know that....

Dogs are one of the greatest enemies of Domestic Rabbits? Be sure your animals are housed in a safe place!

Heat prostration kills many rabbits each summer. Here in Central California we must pay particular attention to keeping our bunnies out of the direct sun. (Keep them as cool as possible on hot days by checking their water source and giving them ice bottles.) Remember that a **buck maintained for several days in temperatures over 85 degrees may** become sterile.

Rabbits can produce **5 times as much meat** from a given amount of alfalfa as cattle or sheep.

Rabbit meat contains **less fat than either chicken or turkey** and there is also a far greater ratio of meat to waste.

The fur industry uses rabbit fur extensively, particularly that of the Rex rabbit.

The wool from angora rabbits is very desirable for use in the manufacture of luxury garments.

A rabbit does not need a pedigree in order to be **SHOWN**, but it does need a **3 generation pedigree** in order to be **REGISTERED**.

Pharmaceutical production utilizes portions of the “waste” from rabbit processing.

Rabbits are used in many laboratories, their cleanliness being highly desirable in that type setting.

Rabbits as pets are becoming more popular each year!!

Showing rabbits is an enjoyable pastime. It is a great 4-H project because rabbits tend to be quite easy to start into. There is usually at least one fair each year in your area, where the rabbits are shown. In a recent ARBA (American Rabbit Breeders Association) national convention there were over 20,000 rabbits exhibited. One of these conventions is held each fall in various parts of the country.

When you choose your first rabbit try to purchase the very best animal your budget will allow. It is much less expensive to feed a good quality rabbit for good results than it is to feed a poor quality animal a longer time in an effort to make it usable.

Keeping good records is very vital if you are going to be successful raising rabbits! You will want to learn how to breed your rabbits for improvement of your “herd”. **ALWAYS WRITE THE INFORMATION DOWN** – Never trust your memory!

If your rabbit project is to be done properly, **GENETICS** will play a major role.

One of the most interesting genetic studies is that of Coat Color. There are two (and only two) actual “colors” involved in animal coat colors: Black and Chocolate. (White is not a color, but the absence of color.) Any colors that appear not to be these colors have resulted from some genetic modification of these colors (e.g.: dilution, pattern, etc.). Many books are available for further study if you want to explore the subject more deeply.

In order to consistently improve your line of rabbits you will need to learn to “cull” carefully. Never use animals as “breeders” that do not conform to the particular breed standard. “Cute and Different” is great for a “pet” but don’t consider using that as the only reason to choose a “papa” for your next generation of winners!

Enjoy your rabbits!

Treat them well!

They will give you a lot of enjoyment!

The more you work with them, the more you will appreciate them!

RABBIT STUDY GUIDE
LEVEL I

HOW TO PREPARE FOR SMALL ANIMAL EXPO

(80% score is required to pass the level)

Written Test:

Entry form	(23 points)
T/F Quiz	(10 points)
Multiple Choice	(10 points)
Anatomy	(10 points)

TOTAL POINTS: 53

Skills Day Test:

Showmanship	(100 points)
Breed Identification – 5 rabbit	(10 points)
Judging class KEEP/CULL	(10 points)
Feed & Equipment Identification	(10 points)

TOTAL POINTS 130

1. Study the glossary of terms in this study guide for the written test. Study the picture of a rabbit so that you will be able to label various parts of a rabbit. You will be asked to identify 5 breeds of rabbits from a colored photograph. (Your leader will have pictures of 20 different breeds in the leader handbook.)
2. There will be 5 rabbits for you to judge and you will determine which to keep and which to cull. This will be visual judging only – no touching.
3. You will be tested on showmanship and will bring your own rabbit (or a club rabbit). While every effort will be made to protect the area for RABBIT EXPO, we will take no responsibility for death or injury to the animals.
4. It is suggested that you use this Study Guide in total. The current ARBA OFFICIAL GUIDE BOOK is the source of information used in the glossary. The American Rabbit Breeders Association (ARBA) publishes a BOOK OF STANDARDS for over 40 rabbits and cavies which are recognized by that association. (Both of those books are very helpful to study!) Your leader should have supplementary information if you need it.
5. You will be tested on filling out a rabbit Breeding Class entry form for the fair.

RABBIT STUDY GUIDE
LEVEL II

HOW TO PREPARE FOR SMALL ANIMAL EXPO

(80 % score is required to pass the level)

Written Test:

Entry Form	(31 Points)
T/F Quiz	(15 Points)
Multiple Choice	(15 Points)
Anatomy	(15 Points)

TOTAL POINTS: 76

Skills Day Test:

Showmanship	(100 Points)
Breed Identification – 7 Rabbits	(14 Points)
Judging Class <u>KEEP/CULL</u>	(10 Points)
Feed & Equipment Identification	(14 Points)

TOTAL POINTS 138

1. Study the glossary of terms and Rabbit Diseases in this Study Guide for the written test. Study the picture of a rabbit so that you will be able to label various parts of a rabbit. You will be asked to identify 7 breeds of rabbits from a colored photograph. (Your leader will have pictures of 20 different breeds to show you from the Leader Handbook). There will be 5 rabbits for you to judge and you will determine which to keep and which to cull. This is visual judging only – no touching.
2. You will be tested on showmanship and will bring your own rabbit (or a club rabbit). While every effort will be made to protect the area for RABBIT EXPO, we will take no responsibility for death or injury to the animals.
4. It is suggested that you do study this Study Guide in total. The current ARBA OFFICIAL GUIDE BOOK is the source of information used in the glossary. The American Rabbit Breeders Association (ARBA) publishes a BOOK OF STANDARDS for over 40 rabbits and cavies which are recognized by that association. (Both of these books are very helpful to study!) Your leader should have supplementary information if you need it.
5. You will be tested on filling out a rabbit meat pen entry form for the fair.

RABBIT STUDY GUIDE
LEVEL III

HOW TO PREPARE FOR SMALL ANIMAL EXPO

(80% score is required to pass the level)

Written Test:

Entry Form	(30 points)
T/F Quiz	(20 points)
Multiple Choice	(10 points)
Anatomy	(21 points)

TOTAL POINTS 81

Skills Day Test:

Showmanship	(100 points)
Breed Identification – 10 rabbits	(20 points)
Judging Class	(50 points)

Practical Skills:

Prepare Tattoo	
Prepare syringe	
Indicate sites for intramuscular and subcutaneous injections	(15 Points)

TOTAL POINTS 185

1. Study the glossary of terms and diseases in this Study Guide for the written test. You will be asked to identify 10 breeds of rabbits from a colored photograph. (Your leader will have pictures of 20 different breeds to show you.)
2. There will be 4 rabbits for you to judge and place. (Hands-on judging.)
3. You will be tested on showmanship and will bring your own rabbit (or a club rabbit). While every effort will be made to protect the area for RABBIT EXPO, we will take no responsibility for death or injury to the animals.
5. It is suggested that you do study this Study Guide in total. The current ARBA OFFICIAL GUIDE BOOK is the source of information used in the glossary. The American Rabbit Breeders Association (ARBA) publishes a BOOK OF STANDARDS for over 40 rabbits and cavies which are recognized by that association. (Both of these books are helpful to study.) Your leader should have supplementary information if you need it.
5. You will be tested on filling out a rabbit breeding and meat pen entry form for the fair.

RABBIT STUDY GUIDE
LEVEL IV

HOW TO PREPARE FOR SMALL ANIMAL EXPO

(80% score is required to pass the level)

Written Test:

Entry Form	(62 points)
T/F Quiz	(30 points)
Multiple Choice	(10 points)

TOTAL POINTS: 102

Skills Day Test:

Showmanship	(100 points)
Breed Identification – 15 rabbits	(15 points)
Judging Class – class of 4 rabbits	(50 points)
Reasons	(50 points)

Practical Skills:

Describe treatment for 5 common ailments from rabbit study guide	(10 Points)
--	-------------

TOTAL POINTS: 225

1. Study the glossary of terms and diseases in this Study Guide for the written test. You will be asked to identify 15 breeds of rabbits from a colored photograph. (Your leader will have pictures of 20 different breeds to show you.)
2. There will be 4 rabbits for you to judge and you will be asked to place them and give reasons for the placement. (Hands on judging.)
3. You will be tested on showmanship and will bring your own rabbit (or a club rabbit). While every effort will be made to protect the area for RABBIT EXPO, we will take no responsibility for death or injury to the animals.
4. It is suggested that you do study this Study Guide in total. The current ARBA OFFICIAL GUIDE BOOK is the source of information used in the glossary. The American Rabbit Breeders Association (ARBA) publishes a BOOK OF STANDARDS for over 40 rabbits and cavies which are recognized by that association. (Both of these books are very helpful to study.) Your leader should have supplementary information if you need it.
5. You will be tested on filling out a breeding rabbit entry form for the fair as well as a Meat Pen entry

RABBIT STUDY GUIDE

GLOSSARY OF TERMS

NOTE: This glossary is a definition. All words or terms are as applied to rabbits and are not necessarily the dictionary definition.

LEVEL I

Agouti	A hair shaft possessing three or more bands of color with a definite break in color bands. Buck: An unaltered male rabbit.
Claws or Toenails	A rabbit has four claws (toenails) and a dewclaw on the front paws and four claws (toenails) on the rear paws.
Commercial Breed	Larger breeds used for meat or fur as well as show.
Condition	The overall physical state of a rabbit in reference to health, cleanliness, fur and grooming. Crossbred: Rabbit resulting from mating two rabbits, each of a different breed.
Crossbred	Rabbit resulting from mating two rabbits, each of a different breed.
Condition	The overall physical state of a rabbit in reference to health, cleanliness, fur and grooming.
Crossbred	Rabbit resulting from mating two rabbits, each of a different breed.
Dewlap	A pendulous fold or folds of loose skin which hang from the throat. (Most common on does.)
Diarrhea	Loose, runny manure (Oat hay may help control in rabbits.)
Disqualification	One or more defects, deformities or blemishes which render an animal unfit to be placed in competition or from taking part in an exhibition.
Doe	An unaltered female rabbit
Ear Number or Tattoo	Up to five letters or numbers (or combination of both) which go in the left ear to identify the rabbit.
Fancy Breed	Breeds used basically for show.
Finish	The required degree of perfection in condition. Fully prime in coat, color and flesh.
Fly Back	(Applied to and describing coat texture.) A coat of fur which flies back to its smooth normal position when stroked from the hindquarters to the shoulders.
Fur	Rabbit's coat. There are four types: normal, rex, satin and angora.
Gestation	The carrying of young. The period between conception and birth-usually 31 days for rabbits.
Intermediate	A heavyweight rabbit at least six months of age and under 8 months of age or meeting the weight requirements of the breed.
Junior	A rabbit less than six months of age.
Kindling	The process of giving birth to young rabbits ("kits").

RABBIT STUDY GUIDE

GLOSSARY, cont.

LEVEL I (cont.)

Molt	The act or process of shedding or changing fur.
Outcrossing	Mating unrelated stock of the same breed.
Pedigree	A written chart of the male and female ancestors of a rabbit showing the date of birth and the parents, grandparents and great grandparents of the specimen in question.
Purebred	A very loose term used to designate rabbits which closely approximate the requirements of the Standard of Perfection of the breed.
Random Breeding	Mating of two rabbits without specific lineage or pedigree
Rate of Gain	Rabbits gain more per pound of feed than any other animal
Registration	The official recording of a rabbit (over 6 months of age) along with it's pedigree that has been approved by a licensed registrar.
Senior	A rabbit six months of age and over in those breeds having four showroom age classes, a rabbit eight months of age or over in breeds having six showroom age classes.
Teeth	A rabbit has a total of 28 teeth
Variety	A division within a breed. (Usually color.)
Wolf or Buck Teeth	(Malocclusion): Improper meeting of the teeth, protruding or elongated teeth in either upper or lower jaw which prevents normal wear.

RABBIT STUDY GUIDE

GLOSSARY (cont.)

LEVEL II

Balance	As applied to type, shape and conformation. Orderly arrangement of physical characteristics to present a pleasing appearance.
Broken Coat	A coat with guard hairs missing or broken in spots, which exposes the undercoat. Areas where the coat is affected by molt which exposes the undercoat
Density	The property or quality of a thick coat.
Hares	(Jackrabbit) Not a rabbit, young are born with eyes open
Lactate	To nurse – produce milk.
Lagomorph	Rabbit scientific classification (rabbits are born with their eyes closed).
Mites	Three different types affect rabbits; fur mites, mange mites and ear mites. All require different treatment.
Rex Fur	Has no protruding guard hairs.
Shape	General conformation, overall appearance as determined by body structure.
Sheen	Principle characteristic of the satin fur. A bright, natural luster attributed to the unique structure of the hair shaft. (translucent hairs)
Solid Color	Of the same color uniformly over the entire animal. Devoid of markings or shading.
Texture	Matte quality of fur pertaining to its action when stroked toward the head.
Undercolor	The base of the hair-shaft next to the skin
Wool	Descriptive of the fur of Angora rabbits. Angora wool is warmer than any other natural fiber.

Also study Level I Terms

RABBIT STUDY GUIDE

GLOSSARY (cont.)

LEVELS III and IV

Arch	A curve in the backline (spine) when viewed in profile. Blaze: Head marking on a Dutch.
Boils or Abscess	A hard swelling or isolated collection of pus occurring in the rabbit's skin, accompanied by localized fever and heat.
Butterfly	Nose marking, wing portion covering the whisker bed from lip to lip with the body (nose fork) extending up the center of the face.
Cobby	Stout and stocky body type which is very compact.
Flabby	The condition of a rabbit when the flesh or fur hangs loosely on the animal by it's own weight.
Guard Hair	The longer, coarser hair of the coat offering protection to the undercoat and furnishing wearing quality to the coat in addition to providing sheen.
Massive	Bulky, large, heavy and ponderous. (Usually refers to head shape.)
Palpation	The technique where you manually feel the enlargement of the uteri (embryos).
Racey	As applied to type; slim, trim, alert and active. Slender in body and legs – hare-like.
Snakey	Cylindrical in shape.
Stocky	Compact, stout and cobby.
Tucked up	As applied to type. The trim appearance of a rabbit with the flank and belly gathered in closely to form an arch when the rabbit is in a sitting position.
Spot	A distinct, noticeable cluster of foreign-colored hairs forming a definite spot.. .not just stray hairs close together.

Also study Levels I & II

RABBIT STUDY GUIDE

RABBIT DISEASES

By Dr. T.E. Reed

When diagnosing any type of disease in the rabbit colony, it is imperative that one inspect and review the management practices of the rabbitry. To adequately discuss some of the rabbit diseases, we must, in some cases, review some of the management practices in the rabbitry to have a clear understanding of those requirements of the rabbit in order to maintain excellent health status. We suggest you review the section on rabbit husbandry and the section on breeding techniques or the part that has a correlation to the disease being studied.

LEVEL I

DISEASE/ CONDITION	SIGNS	CAUSE	TREATMENT	PREVENTION
CANNIBALISM (During or after kindling)	Appendages may be missing or entire carcass consumed except the head. Most common in first litter of does.	Inherent nervousness. Mishap of consuming appendages while assisting with mouth during kindling process. Presence of predators or rodents in kindling area. Does deprived of sufficient water.	Provide ideal kindling conditions.	Select does with good mothering instincts. Restrict rodents and predators from kindling area.
CANNIBALISM (During growing stages)	Chewing on each other while caged together. Sometimes to the extent to cause death.	Overcrowding sexually mature males in growing cages; lack of adequate drinking water.	Relieve overcrowding. Castration of male animals. Fresh water at all times.	Cage growing rabbits that mature early and gain at a slower rate individually. Supply fresh water.
EAR MITES (Ear Canker)	Shaking head, scratching of ears, "scabby" formation inside of ear due to accumulation of serum and blood, secondary bacterial infection.	Infestation of inside outer ear with mites. <i>Psoroptes cuniculi</i>	Daily placement of oil in ear for 3 days, repeating treatment at 10 day intervals will be effective in suffocation of mites. Addition of parasiticide, such as Malthine or rotenone will increase the effectiveness of the treatment.	Isolation of herd. Medication placed in ears of every rabbit in herd once a month will rid the rabbitry of the parasite.
FOOT ABSCESSSES	Small nodular abscesses on the feet, legs and toes of infected rabbits. Initially a small number of animals infected that increases in incidence with time.	Infection and irritation of bruised area with <i>Staphylococcus sp.</i>	Soak infected feet in an iodine solution every 3-4 days. Open abscesses, if necessary.	Strict sanitation.
FUR MITE	Loss of fur around face, neck and back.	Fur mites – <i>cheyletidia parasitovora</i> . <i>Listrophorcy gibus</i>	Application of cat flea powder. Repeat 10 days after initial treatment to insure total control of life cycle.	Herd isolation, good sanitation, selective bedding materials. Rodent control.
HAIR BLOCKAGE: "Fur Ball" or "Fur Blockage"	Intermittent diarrhea, poor appetite or periods of no appetite, loss of weight, moult, pulling fur, appearance of above sign in only one animal in herd.	Physical blockage of small intestines that will not allow ingested food to flow through the intestinal tract.	Daily dosing animal with ½ teaspoon of mineral oil for three (3) consecutive days. Repeat once a week.	Daily feeding roughage to animals prone to this condition (Angora, kindling does, etc.). Periodic (weekly) administration of small amount of Vaseline or mineral oil to animals susceptible to this condition.
HEAT PROSTRATION	Increased respiratory rate. Wet around the mouth that may be blood tinged. Holding head high and blue tinge to ears and mouth. Prostration and death.	High temperature. Usually accompanied by high humidity. Animals sitting directly in sunlight without air movement.	Remove animal to cool place. If completely prostrate, submerge in cool water.	Keep air moving around the animals. Use of plastic bottles filled with water that is frozen solid.
HUTCH BURN (Urine burn) (Often confused with Vent Disease)	"Chapped" or "galded" area around external genitals and the inside of hind legs. Secondary bacterial invasion common that causes the area to become infected.	Dirty, wet hutches or urine guard that splashes the urine back on the rabbit at times of urination.	Correct cause. Apply antibiotic cream to infected and "burned" areas.	Strict sanitation. Close attention to the angle of urine guards.

RABBIT STUDY GUIDE
DISEASES (cont.)

LEVEL I (cont.)

DISEASE/ CONDITION	SIGNS	CAUSE	TREATMENT	PREVENTION
MALOCCLUSION “Buck teeth” “Wolf teeth”	Elongation of upper and/or lower teeth. Oftentimes to the extent that the animal will fail to eat.	Inherited condition in some animals, may be much more complex than originally thought. Breaking of one or more opposing teeth and tooth elongates without being worn off. Rabbits incisors grow ½ inch or more per month if not worn off.	Cull those animals from herd that have the inherited condition. Clipping teeth can be done; but not an ethical or intelligent practice with inherited malocclusion.	Selective culling to eliminate those defective genes from the herd.
PASTEURELOSIS (Expresses itself in severe forms) 1. “snuffles” (chronic)	Persistent “sneezing” with a productive nasal discharge that is thin or thick and white in nature. Precursor to many other conditions. Decrease growth rate and production. Primarily an upper respiratory infection where pneumonia is often a secondary complication. Death associated with secondary infection.	<i>Pasteurella sp.</i> organism infection associated with stress factors. <i>Pasteurelia sp.</i> and/or <i>Bordetella bronchisepticum</i>	No specific treatment with medication successful. Improve ventilation of rabbitry. Administration of antibiotic to prevent secondary infection. Reduce stress factors	Excellent ventilation, strict culling, development of resistant animal. Minimize stress factors. Isolate sick animals. Chlorinate drinking water.
SORE HOCKS (Ulcerated foot pads)	Ulcerated area on the bottom of the foot pads that has secondary bacterial infection. Sits on any crock or object that is in the cage. Sits cautiously. Loss of condition, fails to mate and be active.	Small foot pad area for size of body, thin fur covering for pad, nervous animal, long toe nails.	Difficult! Use dry solid surface for animals to rest. Treat ulceration with astringent material on a daily basis until healed.	Selective culling for large, well furred feet. Calm animals. Try not to depend on resting board.
WRYECK TORTICOLLIS (Otitis media)	Turning of the head to one side, lose of balance, continuous roll when excited. Usually does not interfere with the appetite of the animal until later stages of the disease.	Inflammation of the middle ear, the balance mechanism of the body. The bacteria usually isolated is a <i>Pasteurclia sp.</i> Often associated with the extension of upper respiratory infections.	Very difficult. Daily instillation of tetracycline ointment as otic drops, about 60% successful. Usually not associate with ear canker.	Proper ventilation. Keep incidence of respirators infections to a minimum.
“SLOBBERS”	Rabbit salivates profusely and face, chin and dewlap area become very moist or wet.	Abscessed tooth. Feeding of excessive amount of “greens” that have been sprayed with certain insecticides or pesticides.	Correct tooth condition. Remove green feed from the diet.	Feed dry ration. Avoid feed that has had chemical treatment.
VENT DISEASE (rabbit syphilis)	“Scabby” inflammation of genitals – both sexes – can have scabs on nose and mouth in later stages. “Scabby nose.” Refuse to mate and /or conceive. Abortions.	Spirochete organism <i>Treponema cuniculi</i> . Usually spread through mating.	Daily application of penicillin ointment to the external genitals or daily administration of Penicillin G intramuscularly for three (3) days. 2000,000 IU/10 lbs. body weight	Always check breeding animals before mating for signs of this disease and do not use if infected.
PNEUMONIA	Difficulty in breathing. Bluish color to lips, tongue, and ears. Necropsy: inflamed lungs.	Any type of bacterial or virus invasion of respiratory system. Usually at times of stress and often the final stage of “Snuffles”.	Broad spectrum antibiotic, isolation, eliminate stress.	Assure adequate ventilaton. Minimize stress.
FUR CHEWING	Chewing of fur on body or other body parts. Fur can be chewed by self or other animals in pen.	Low fiber diet; boredom; vice, developing enteritis.	Increase fiber in diet by feeding hay or straw; remove individual chewing fur from pen. Addition of 5 lbs. of Magnesium oxide per ton of feed “sometimes” will stop fur chewing.	High fiber ration. Addition of Magnesium oxide to regular ration.

RABBIT STUDY GUIDE
DISEASES (cont.)

LEVELS II and III cont.

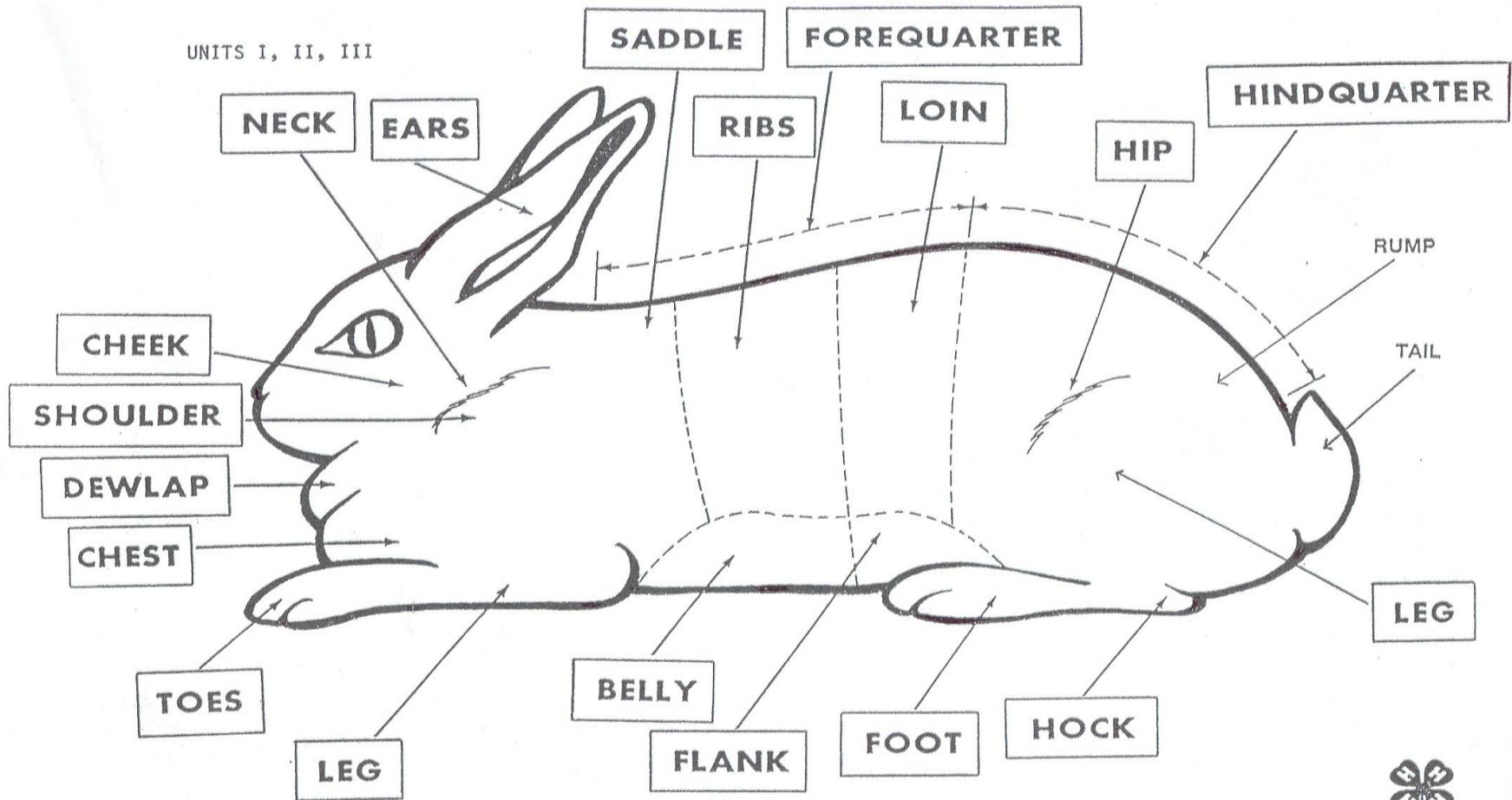
COPOPHRAGY (eating of night feces)	Usually seen at night or early morning where animals will consume the few material (soft) directly from the rectum.	Normal	Don't want to disrupt	None. The rabbit's way of increasing the absorption of some nutrients of the diet.
ENTEROTOXEMIA (described by Oregon State University in 1978)	Acute (24 hr.) fatal diarrhea dehydration – on necropsy an enlarged cecum that sometimes has red discoloration.	Specific bacterium uncertain, but associated closely with high energy feed with low fiber feed content.	Replace pelleted diet with rolled oats and gradually increase the portion of pellets on a daily basis. Treatment with Oxytetracycline in drinking water may temporarily correct condition.	Feed diets that are high in fiber (18%) and relatively low in total energy.
HINDQUARTER PARALYSIS	Rabbit drags rear legs and does not have any (motor control) movement in rear legs. Control of urinary bladder and bowel may be absent. A violent "scream" from rabbit usually is heard at the time of injury. Can happen during tattooing procedure or may just be present incage without apparent cause.	Discoloration or fracture of spinal vertebra. Often seen when rabbit struggles or becomes excited and "thrusts" hind legs backwards.	None – should be humanely euthanized.	Proper handling techniques.
INFECTIOUS MYXOMATOSIS	Primarily seen in coastal areas of California and Oregon during May to August. Severe conjunctivitis, fails to eat, high temperature; inflamed and edematosis genitals and ears, respiratory infection in later stages and death.	Virus - transmitted by mosquitoes.	Depopulate herd, burn and bury affected animals. Seek professional assistance.	Mosquito control, control the brush rabbit.
MASTITIS (Blue breast)	Inflamed, swollen, hot, discolored mammary system – all or individual sections. Abscessation of gland is common. Normally occurs just after kindling or after weaning.	Any bacteria within the mammary system. Usually a <i>Staphylococcus sp.</i> or <i>Streptococcus sp.</i>	Treat for three (3) days in succession with Penicillion G injections , intramuscularly at 200,000 IU/10 lbs. body weight. Strip glands free of milk. Hog-Pak application 3-4 times daily.	Prevention of caked breast and trauma to the breast (see caked breast).
SCATTERING OF YOUNG AT KINDLING	Poor mothering instinct due to hereditary causes. Rodents or predators in rabbitry. Vitamin A deficiency. Very young does. Incompatible nest.	Fostering the young or feeding the kits as orphans.	Select replacement animals with excellent mothering instinct. Use of subterranean nest boxes. Control predators and rodents in rabbitry. Routine use of water supplemented with vitamins.	

LEVEL IV

Includes all terms: Level I, II, & III.

RABBIT STUDY GUIDE

Rabbit Parts



RABBIT... PARTS IDENTIFICATION

The University of California in compliance with the Civil Rights Act of 1964, Title IX of the Education Amendments of 1972, and the Rehabilitation Act of 1973 does not discriminate on the basis of race, creed, religion, color, national origin, sex, or mental or physical handicap in any of its programs or activities, or with respect to any of its employment policies, practices, or procedures. The University of California does not discriminate on the basis of age, ancestry, marital orientation, marital status, citizenship, nor because individuals are married or Vietnam era veterans. Inquiries regarding this policy may be directed to the Affirmative Action Officer, Division of Agriculture and Natural Resources, 2120 University Ave., University of California, Berkeley, California 94720 (415) 844-4270.

Issued in furtherance of Cooperative Extension work, Acts of May 8 and June 30, 1914, in cooperation with the U.S. Department of Agriculture, Jerome B. Siebert, Director of Cooperative Extension, University of California.

UM-CR-10/RS-VI, FLAM



COOPERATIVE EXTENSION
UNIVERSITY OF CALIFORNIA

4-H-2039

RABBIT STUDY GUIDE

LEVELS I & II

PLEASE PRINT OR TYPE

LAST NAME _____ FIRST NAME _____ MIDDLE INITIAL _____

ADDRESS _____

CITY _____ ZIP _____ PHONE _____

SIGNATURE OF OWNER OR AGENT _____

RABBIT ENTRY FORM JUNIOR DEPARTMENT

MADERA DISTRICT FAIR
1850 W. Cleveland Ave.
Madera, CA 93637
(559) 674-8511

Grade In School _____

Please accept these entries subject to the rules and regulations as published in the official premium list for your fair.

WRITTEN SIGNATURE OF PARENT OR GUARDIAN _____

Date _____

Abbreviate if necessary

Leave Blank	Division Number	Class Number	Breed	Color	Sex	Number Ear Tag or Tattoo	Date of Birth	Junior	Inter.	Senior	NAME OF BREEDER	LEAVE THESE SPACES BLANK							
												Entry Fee	Production Award	Entry Number	Place	Award			
1.																			
2.																			
3.																			
4.																			
5.																			
6.																			
7.																			
8.																			
9.																			
10.																			
11.																			
12.																			
13.																			
14.																			

CONSULT PREMIUM BOOK FOR DIVISION AND CLASS NUMBERS, ENTRY FEES, STALL RENTAL RATES, AND ENTRY CLOSING DATES.

Number of Animals.....().....

Entry Fees.....().....

Pens Required.....().....

Box Stalls Required.....().....

Tie Stalls Required.....().....

Amount Enclosed.....().....

Receipt Number _____

The undersigned states herewith, that he is a recognized supervisor of the project of which the above entries are a part; that to his personal and actual knowledge the statements regarding the same are true; and he further states that he has read and has full understanding of the rules and regulations governing the same and agrees to be governed by them. The exhibitor is a member of the _____ (Chapter or Club)

Signed _____
Instructor, County Agent or Local Leader

No 2150

REG. PAPERS CHECKED BY:

EXCEPT ENTRY NO.

Exhibitor's No. _____

Use a Separate Entry Form for Horses, a Separate Form for Beef Cattle, a Separate Form for Dairy Cattle, a Separate Form for Swine, Etc.

RABBIT STUDY GUIDE

CHECK LIST FOR JUDGING RABBITS

Check carefully the following items when judging a rabbit.

1. Check the body. Is it the correct type and in balance? Does it have a proper top-line?
2. Check the head. Are the eyes clear? Are the teeth straight and showing no signs of malocclusion?
3. Check the ears. Are they free from mites and properly and permanently marked?
4. Check the shoulders. Are they full or too narrow?
5. Check the saddle. Is it full and firm or loose and flabby? Is the back straight?
6. Check the hips. Are they rounded and full or pinched and bony?
7. Check the tail. Is it carried properly and free from defects?
8. Check the legs and feet. Are they straight legs and all the toenails on the feet present and of the right color for the particular breed and variety?
9. Check the sex. Is it correct?
10. Check the fur for density, fly back, molt softness or harshness. Is it free from bald patches?
11. Check the color and markings. Are these correct for the breed and variety?
12. Check the condition. Is the rabbit clean and healthy? Is it too fat or too thin? Is it the proper weight? Is it well groomed?

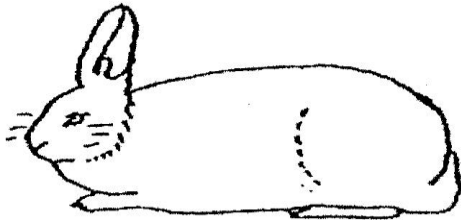
A rabbit with an ailment or defect such as the wrong markings, showing signs of snuffles, or a broken tail must be disqualified.

Always refer to the Standard of Perfection published by the American Rabbit Breeder Association for the individual breed standards and definitions!

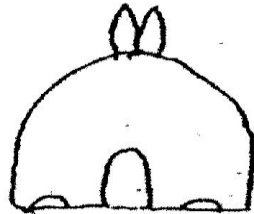
RABBIT STUDY GUIDE

JUDGING ILLUSTRATION

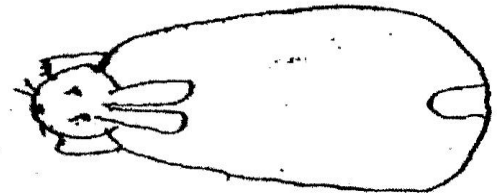
Judging Rabbits – What to look for



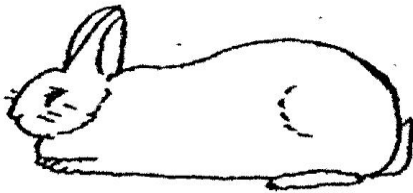
Moderate length
Correct topline
Good depth of body



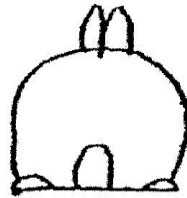
Good body depth and width



Correct top



Incorrect topline
Weak behind shoulders



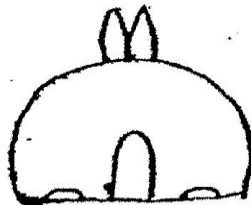
Too narrow



Too large in shoulders



Incorrect topline
Too steep slope in rump



Too wide



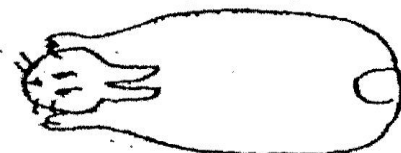
Too narrow especially in hind quarters



Incorrect topline



Too prominent in hips

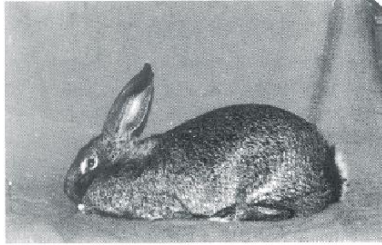


Narrow in shoulder

RABBIT STUDY GUIDE

TYPE PROFILE OF RABBITS

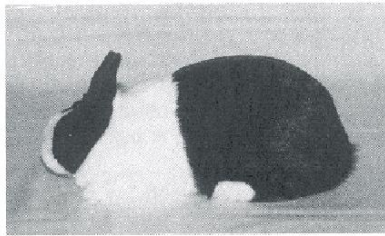
LEVEL III



SEMI – ARCH TYPE: This group all carry a very good arch starting back of the shoulders and carrying through to the base of the tail and is referred to as having mandolin type.

Included in this group are American, Beveren, English, Lop, Flemish Giant, and Giant Chinchilla.

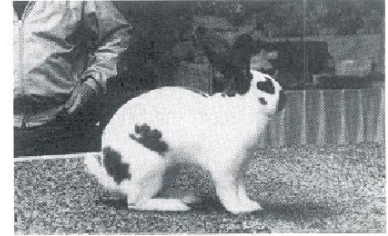
This group should be posed with the forelegs and hocks flat on the table for the initial examination. A better evaluation of type may be obtained by allowing some of these animals to move naturally, on the table, after the initial examination.



COMPACT TYPE: Most all of these animals are lighter in weight and shorter in length than the commercial breeds.

Included in this group are: American Fuzzy Lop, English Angora, Standard Chinchilla, Dutch, Dwarf Hotot, Florida White, Havana, Holland Lop, Jersey Wooly, Lilac, Mini Lop, Mini Rex, Netherland Dwarf, Polish, and Silver.

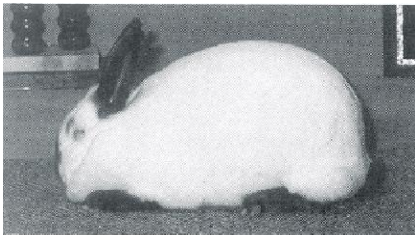
Most of this group are posed with the forelegs and hocks flat on the table, However, a few are posed in a semi “pushed-up” position resting lightly on the front feet.



FULL ARCH TYPE: Animals with this type show an arch starting at the nape of the neck, running over the shoulder, mid-section, loin, and hips, to the juncture of the tail. Most all animals will show more depth than width.

Included in this group are: Belgian Hare, Britannia Petite, Checkered Giant, English Spot, Rhinelander, and Tan.

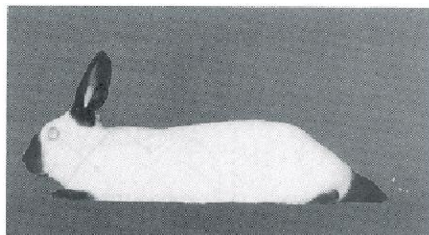
Most of this group should be allowed to move naturally after the original examination and all will pose up on the front feet and toes.



COMMERCIAL TYPE: This group is considered to be the ideal meat type. They are medium in length with depth equaling width, showing roundness of body and firmness of flesh with very little offal when dressed.

Included in this group are: French Angora, giant Angora, Satin Angora, Champagne d-Argent, Californian, Cinnamon, American Chinchilla, Crème d’Argent, French Lop, Harlequin, Hotot, New Zealand, Palomino, Rex, American Sable, Satin, Silver Fox, and Silver Marten.

This group is posed with the forelegs and hocks flat on the table, not bunched up or stretched out but rather in a sort of natural pose.



CYLINDRICAL TYPE: This group has a type that is long, slim, and cylindrical with fine bone and a long slender head.

This group is comprised of the Himalayan. It is posed stretched out as far as possible but with the forelegs and hocks flat on the table. This allows for its length, type, and markings to be shown at their best advantage.

RABBIT STUDY GUIDE

Now, Let's Judge a Class – White Satin Senior Breeding Bucks
(Rear and Side Views).

THINGS TO LOOK FOR WHEN JUDGING SATINS

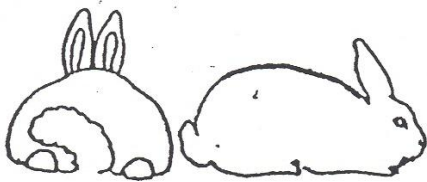
STANDARDS OF PERFECTION

SATINS

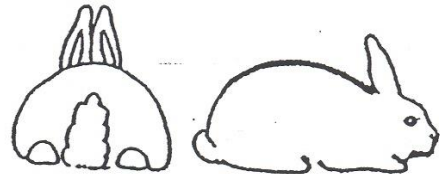
BODY TYPE – Compact body with depth and width that balance, tapering slightly from the hindquarters to the shoulders. Very plump and full over and around the hips. Meaty saddle carried as full and meaty as possible to nape of neck. Meaty over ribs and shoulders. Size of feet, ears and bone to be in proportion to the general conformation for proper balance.

HEAD – Well shaped, well filled face and jaws, set on a short neck, slightly smaller in does than bucks.

EARS – Carried erect and well together, strong at base, rounded tips. Well furred.



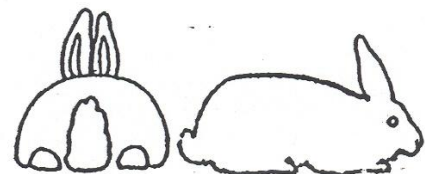
1.



2.



3.



4.

My placing _____

RABBIT STUDY GUIDE

SAMPLE REASONS OFFICIAL PLACING ON CLASS OF SATINS

Official Placing 2 – 4 – 3 – 1
Cuts 2 8 4

“OFFICIAL REASONS”

1. I placed this class of White Satin Senior Breeding Bucks
2 – 4 – 3 – 1.
3. Two was a very smooth, meaty and well muscled rabbit. He carried a stronger arch over the back starting immediately behind the ears, carrying the arch fully over the loin and nicely over the hips. However, he should have been thicker and meatier over the hips and rump.
4. In my top pair I placed 2 over 4 because 2 was a smoother, meatier rabbit that was deeper and thicker in the loin. Two was also smoother over the hips and rump than 4.
5. I’ll admit that 4 carried more width and fullness over the shoulders.
6. However, 4 lacked depth of body and fullness over the rump.
7. In the middle pair, I placed 4 over 3 because 4 was much smoother over the rump and hips. Four was also deeper bodied and had a meatier loin.
8. I’ll grant that 3 had a more masculine head than 4.
9. But I criticized 3 for being too flat over the back and too rough over the rump.
10. In the bottom pair, I placed 3 over 1. One had a disqualification which prevented him from being placed any higher in the class.
11. Grant, 1 was an outstanding rabbit. He was fuller and firmer over the shoulders, and was meatier, deeper and smoother over the loin and rump area than 3. However, possessing a wry tail is a serious disqualification which will most likely be inherited by offspring and for this reason he cannot be placed higher in the class.

1 – 2 – 3 – 4	20
1 – 2 – 4 – 3	2
1 – 3 – 2 – 4	0
1 – 4 – 2 – 3	18
1 – 4 – 3 – 2	8
2 – 1 – 3 – 4	26
2 – 1 – 4 – 3	34
2 – 3 – 1 – 4	30
2 – 3 – 4 – 1	42
2 – 4 – 1 – 3	46
2 – 4 – 3 – 1	50
3 – 1 – 2 – 4	6
3 – 1 – 4 – 2	4
3 – 2 – 1 – 4	20
3 – 2 – 4 – 1	32
3 – 4 – 1 – 2	16
3 – 4 – 2 – 1	30
4 – 1 – 2 – 3	30
4 – 1 – 3 – 2	20
4 – 2 – 1 – 3	44
4 – 2 – 3 – 1	48
4 – 3 – 1 – 2	24
4 – 3 – 2 – 1	38

How did you do?

Your Score

RABBIT STUDY GUIDE

CULLING CARD		C0658 (Rep. 6/97)
Contestant's No. _____		Breed _____
No. _____		Class _____
No.	Keep	Cull
1.		
2.		
3.		
4.		
5.		
6.		
7.		
8.		
9.		
10.		
TOTAL SCORE		

KEEP

OR

CULL

??????

The judging process in your own rabbitry is used when you decide whether to keep a rabbit or to “cull” it because it doesn’t measure up to the standard you want.

You will have five (5) rabbits to look at. Decide if you want to “keep” each one or “cull” it. Mark the card accordingly.

RABBIT STUDY GUIDE

JUDGING RABBIT MEAT PEN CLASSES

3 MAJOR FACTORS: (1) MEAT TYPE, (2) CONDITION, (3) UNIFORMITY

Fur is a minor factor

(1) MEAT TYPE

40%

Compact	Well filled hips
Short	Good body depth
Body well filled	Wide, deep loin
Rounded, solid flesh	Thick hind quarters
Smooth	Well developed shoulders

Hindquarters most important

Loin second

Forequarters third

Serious Defaults: Protruding hip bones
Prominent razor back
Lacking fleshing

(2) CONDITION

30%

Firm	<u>Must not show any signs of:</u>	
Solid	Flabbiness	Looseness
	Softness	Pottiness
	Neglect	Disease

(3) UNIFORMITY OF PEN

20%

Uniformity must be present in:

Weight	Appearance	Meat Type
Size	Condition	Fur

(4) FUR: 10%

A MEAT PEN OF FRYER RABBITS CONSISTS OF THREE (3) RABBITS

- All the same breed and variety
- Age not over 10 weeks
- Not over five (5) pounds per rabbit

RABBIT STUDY GUIDE
SHOWMANSHIP SCORE SHEET

Name: _____

Score: _____

Club: _____

Division: _____

#	SHOWMANSHIP	Possible Score	Score
1.	Picking rabbit up from cage	3	
2.	Carrying rabbit to Judges Table	3	
3.	Setting up in a posed position and grooming coat	3	
4.	Show and tell ear number to judge with left ear facing judge	3	
5.	Check ears	3	
6.	Check eyes	3	
7.	Check for blemishes on back, check belly for ruptures	3	
8.	Check tail for carriage and straightness	3	
9.	Check front legs for straightness	3	
10.	Check nose	3	
11.	Check teeth	3	
12.	Check front toenails and foot pads	3	
13.	Check back toenails and foot pads	3	
14.	Check dewlap and belly for blemishes	3	
15.	Check hind legs for straightness	3	
16.	Check sex – Show and tell judge	3	
17.	Return rabbit to natural position	3	
18.	Check fur for texture and density	3	
19.	Pose and groom rabbit with left ear facing judge.	3	
20.	Condition of rabbit	3	
	SCORE	60	
21.	Ability to handle rabbit	10	
22.	Thoroughness of routine	10	
23.	Responses to judge	10	
24.	Showman: Neatly dressed, clean and well groomed	10	
	SCORE	40	
TOTAL SCORE			

RABBIT STUDY GUIDE

FEED AND EQUIPMENT ID

EXAMPLES you may be asked to identify:

HAY -

Alfalfa
Oat
Timothy/Orchard Grass

FEED -

Commercial Pellets
Calf Manna
Rolled Oats/Oatmeal
Sunflower Seed

SALT LICK

HUTCH EQUIPMENT –

Water Bottle
Automatic Water Valve
Crock
Outside Feeder

NEST BOX

GROOMING SUPPLIES –

Brushes
Nail Clippers

TATTOO EQUIPMENT –

Ink
Letter Clamp
Wrap

RABBIT STUDY GUIDE

QUALITY ASSURANCE

FOOD SAFETY and ANIMAL DRUGS:

Testing . . . Testing . . . Testing

The FDA, USDA, and EPA all work to ensure the safety and efficacy (how well a product works) of the animal health products that go on the market through a rigorous approval process. The drug companies have invested many years and lots of money to get each drug on the market. They don't make this kind of investment so that the drug fails to do what it is supposed to do when used on animals in the field.

The drugs will do what they say they will do ONLY when they are used according to the manufacturer's guidelines. These drugs were designed and tested for specific diseases, conditions, animals (age, sex, species), dosages and treatments periods and cannot be guaranteed safe and efficacious if they are not used according to the instructions on the label. The label is a legal document and its instructions are on the label.

- **THE LABEL (INCLUDING FEED TAGS) AND ITS INSTRUCTIONS ARE A LEGAL DOCUMENT.**
- **THE LABEL CAN ONLY BE CHANGED OR ALTERED BY A VETERINARIAN.**
- **THOSE CHANGES MUST BE WRITTEN ON A PRESCRIPTION AND ATTACHED TO THE PRODUCT.**

Livestock producers and their employees are required by law to follow the label. With better records being kept, packers will be able to trace illegal residue problems (meat and milk) and other carcass traits back to the producer and the producer will be held accountable for his part in the condemnation of that carcass.

THERE ARE SEVEN STEPS IN THE DRUG APPROVAL PROCESS:

1. ***SCIENTIFIC DISCOVERY***
 - One in 20,000 discovered chemicals makes it to the farm.
2. ***PRELIMINARY TRIALS***
 - Use simple organisms, biotechnology, and computer models to begin testing
3. ***PRE-CLINICAL TRIALS***
 - Perform tests on animals to determine dosages.
4. ***CLINICAL TRIALS***
 - Scientists work with producers to test products in the field to decide withdrawal periods.
5. ***REGULATORY REVIEW***
 - Thorough documentation of testing is reviewed before the company gets permission to produce and sell the product.
6. ***PRODUCT APPROVAL***
 - Drug is approved for use ONLY in the ways stated on the label.
 - **LABEL IS A LEGAL DOCUMENT.**
7. ***MONITORING***
 - Government checks for residues in food (meat and milk products).
 - Follow up on the drug and its safety and effectiveness.

###

University of California – Cooperative Extension

RABBIT STUDY GUIDE

QUALITY ASSURANCE (cont.)

A GOOD ANIMAL HEALTH PROGRAM INCLUDES

- ◆ A program tailored to your situation by consulting with professionals such as your **VETERINARIAN**.
- ◆ Nutrition, correctly balanced and proportioned.
- ◆ Accurate record keeping.
- ◆ Observing legal withdrawal periods for drugs.
- ◆ Proper handling facilities and equipment.
- ◆ Taking time to do the job right.
- ◆ Looking at the general health of the animal whenever you have the chance.
- ◆ Be aware of timing your management practices to create as little stress to the animal as possible and to reduce the factors that compound stress.
- ◆ Deworming, correct products and timing in the parasite's life cycle, including observing legal withdrawal periods.

ANIMAL HEALTH PRODUCTS CAN HELP YOUR ANIMALS ACHIEVE THEIR GENETIC POTENTIAL. THEIR PROPER USAGE IS AS IMPORTANT AS THE PROPER DRUG.

- ◆ **Select the correct product for the job – CONSULT YOUR VETERINARIAN!!**
- ◆ **READ THE LABEL THAT INCLUDES FEED TAGS !!!!! Then follow directions!**
- ◆ **OFF LABEL and extra-label usage is only LEGAL with a veterinarian's written prescription and must meet certain FDA requirements. These are:**
 - **A valid veterinarian-client relationship is established - The diagnosis of the animal is made by and attending veterinarian who is familiar with the owner's animal and makes routine health checks in the area where the animals are kept.**
 - **The health of the animal(s) is at immediate risk and suffering or death of the animal(s) would result if no immediate action was taken.**
 - **No approved and marketed drug exists for the condition or that a higher than approved dose would be needed for the drug to be effective.**
 - **Accurate records of the off-label usage and the animal must be kept.**
 - **The treated animals can easily be identified for an extended period of time.**
 - **The withdrawal time is extended as stated by the veterinarian.**
 - **POSSESSION OF DRUGS AT A FAIR, LIVESTOCK EVENT, ETC. (i.e. Rompun, Ace Promazine, Dexamethazone, Aspirin, Lasix (Furosemide), gentamicin, Banamine, Baytril, etc.) WITHOUT A WRITTEN VETERINARY PRESCRIPTION ATTACHED IS ILLEGAL.**
 - **NO ILLEGAL RESIDUES OCCUR IN THE EDIBLE PRODUCTS (MEAT & MILK) OF TREATED ANIMAL.**

A Veterinarian can be fined thousands of dollars and may lose their license if they are found violating FDA laws and regulations.

University of California – Cooperative Extension