



Suluhisho kwa bei nafuu / Cost-effective solution



OSHO CHEMICAL INDUSTRIES LTD. (Kenya)

P.O. BOX 49916 GPO 00100 NAIROBI, KENYA, OSHO COMPLEX
 PLOT NO. 09, SASIO RD. OFF LUNGA LUNGA, INDUSTRIAL AREA, SMS: 20560
 PILOT LINES: [+254] 711 045000, 732 167000, 726 880 480, 733 880 480
 SMS: 20560 FAX: [+254] 711 045600
 EMAIL: oshochem@oshochem.com

OSHO CHEMICAL INDUSTRIES LTD. (Tanzania)

P.O. BOX 16189 ARUSHA, TANZANIA. ESSO ROAD, UNGA LTD. INDUSTRIAL AREA
 MOBILE: [+255] 757-466746, [+255] 786-466746
 E-MAIL: tz@oshochem.com

OSHO CHEMICAL INDUSTRIES LTD. (Uganda)

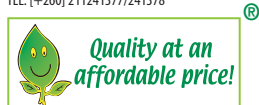
P. O. Box, 12627, Plot 37, 38, 41 & 43, Wing "A", 5th Floor, Mulwana Rd.
 Aquva International Building, (Opp. to Uganda Baati)
 Industrial Area, Kampala, Uganda
 Mob : [+256] 752 766 762 / Tel: [+256] 414 231 385
 Email : oshouganda@oshochem.com / web: http: www.oshochem.com

OSHO CHEMICALS MALAWI LTD. (Malawi)

MASAUKO CHIPEMBERE HIGHWAY,
 BEHIND TOYOTA MALAWI, MASELEMA, BLANTYRE
 P.O. BOX 5338, LIMBE, MALAWI
 TEL.: [+265] (0)11 845 200/213
 E-MAIL: info@oshomw.com

OSHO CHEMICALS (Z) LTD. (Zambia)

PLOT NO. E-11 ARUSHA STREET, P.O. BOX 240145, NDOLA - ZAMBIA
 Tel: [+260] 212 611856 Mobile: [+260] 955 622423
LUSAKA OFFICE:
 Lusaka Office: Plot no 4298, Corner Lumumba & Buyantashi road,
 In premises of Lusaka blasting, Lusaka
 TEL: [+260] 211241377/241378



Web: www.oshochem.com



CHEMICAL INDUSTRIES LTD.

WHO WE ARE

Osho Chemical Industries Limited is a leading Manufacturer, marketer and distributor of Crop protection, Animal Health Products, Public Health, Industrial chemicals, allied products and services. We are committed to excellence by providing quality products at an affordable price. We grow with you!

At Osho, immense emphasis is laid on the quality of products whether manufactured at Osho or sourced from principal suppliers. This is derived from appropriate facilities and processes at Osho, in conjunction with our prime suppliers and even key customers, whose combined efforts are focused on development and use of environmentally safe products.

Osho continues to develop and explore new horizons. Through our group of highly dedicated and motivated staff and management team, we will continue to work tirelessly to accomplish our goals, while being sensitive to the needs of society at large. We realize that we cannot accomplish this alone, hence we welcome cooperation with current and potential customers, suppliers and stakeholders in order to forge new levels of partnership.

We at Osho are certainly concerned with what our partners care about... we grow with you!



FINAL[®] FLIGHT²⁵ WG

Thiamethoxam 250g/kg

WHO Class - III

FEATURES & USES: FINAL FLIGHT[®] 25WG is a broad-spectrum, systemic insecticide for control crop pest.

MODE OF ACTION: Insecticide with contact, stomach and systemic activity. Rapidly taken up into the plant and transported acropetally in the xylem.

CROPS & APPLICATION:

CROP: Tomatoes,
French beans----- Whiteflies, aphids, leafminer
Cabbage ----- Cutworms, aphids
Pepper ----- Thrips, whiteflies, aphids, leafminer
Cucurbits (Squash)--- Cucumber beetles, leafminer, whiteflies

Rates: 4g/20L of water (200g/ha)

Roses ----- Aphids, thrips, whiteflies

Rates: (Foliar) 4g/20L of water (200g/ha)

(Drench) 8g/20L of water (400g/ha)

Pre-harvest Interval (PHI): French beans, cabbages - 7 days
cucurbits, and pepper - 3 days, Tomatoes - 3 days.

PACK SIZES: 8g, 40g, 1Kg



ENZO[®] 20% SP

WHO Class - II

ACETAMIPRID 200g/Kg

FEATURES & USES: ENZO 20%SP is a broad spectrum systemic insecticide. Its translaminar activity puts protection on both sides of the leaf surface.

MODE OF ACTION: Exhibits systemic translaminar activity, contact and stomach action. It acts on the nervous system and has larvicidal activity.

APPLICATION RATES:

CROP: Roses & carnations,
capsicum ----- Thrips, aphids & whiteflies
Rates: 3-4g/20Ltrs of water (150-200g/Ha)

Cabbage, Broccoli ---- Aphids
Cucumber ----- Thrips, aphids,
beetles and whiteflies

Tomato, Snowpeas,
French beans ----- Thrips, aphids, leaf miners
& whiteflies

Onions ----- Thrips
Rates: 2-3g/20Ltrs of water (100-150g/ Ha)

Pre-harvest Interval (PHI):
Cucumbers, Tomatoes, Capsicum, Cabbages, Broccoli,
Onions & French beans -7days, Snow peas -14

PACK SIZES: 500g, 1 kg



MAGNUM[®] GOLD

Polyalkylene oxide modified heptamethyl trisiloxane 800g/L WHO Class - IV

FEATURES & USES: MAGNUM[®]GOLD is a miticide for the control of Red Spidermites and as an adjuvant for use as a wetter/spreader. It is an organosilicone, non ionic based miticide and wetting agent that lowers the surface tension of spray solutions.

MODE OF ACTION: Superspreading of the spray solvent on substrate gives property of dynamic surface tension to spray droplets facilitates rapid penetration of the spray solution.

BENEFITS: Super spreading - Rapid penetration in tissues. Uniform spreading - Increased efficacy of agro chemical. Saves volume and labour

CROPS & APPLICATION RATES:

(Miticide) For the control of mites
Rates: 15ml/20L of water (0.75 L/ha)

(As an adjuvant) with

Cosavet 80DF (PCPB (CR) 0437)

Rates: 8ml/20L of water (0.4 L/ha)

PACK SIZES:

100ml, 200ml, 500ml, 1 litre



OSHOTHION[®] 50 EC

Malathion ...50% w/v

WHO Class - II

FEATURES & USES: OSHOTHION[®] 50 EC is a broad spectrum, non-systemic insecticide used for the control of a wide range of insects like thrips, aphids, caterpillars (coleoptera, diptera, hemiptera, hymenoptera and lepidoptera) in a wide range of crops, including cotton, fruit trees, potatoes, rice, coffee and vegetables.



Aphid

Thrip

Hairy Caterpillars

MODE OF ACTION: It is a cholinesterase inhibitor. It is non-systemic and combines contact, stomach and respiratory action.

CROPS & APPLICATION RATES:

CROPS: Vegetables e.g. French beans ----- Aphids, thrips
Flowers e.g. Roses ----- Aphids, thrips
Rates: Aphids: 50ml/20Lts of water (2.5L/ha)
Thrips: 40ml/20Lts of water (2.0L/ha)

Other Suggested Uses:

Used to control Coleoptera, Diptera, Hemiptera, Hymenoptera and Lepidoptera in a wide range of crops, including cotton, fruit trees potatoes, rice and vegetables.

Rates: 1-2.5 Lt/ha.

Pre-harvest Interval (PHI): Vegetables at least 14 days

PACK SIZES: 100 ml, 200 ml, 500 ml, 1 litre



SEGATRON[®] ULTRA 98% E.C.

98% white oil E.C

WHO Class - IV

FEATURES & USES: SEGATRON ULTRA[®] 98%EC is an insecticide for the control of Aphids, leaf miner, whiteflies on tomatoes and french beans; aphids, whiteflies, mealy bugs, spider mites on roses; leaf miner, mealy bugs, scales, aphids on coffee.

MODE OF ACTION:

Has ovicidal activity and also acts by suffocation.



CROPS & APPLICATION RATES:

50ml /20Litres of water (2.5L/ha)

PACK SIZES: 100ml, 200ml, 1litre, 5 litres

STIRRUP[®] 247 SC

Thiamethoxam 141g/litre + Lambda Cyhalothrin 106 g/litre WHO Class - II

FEATURES & USES: STIRRUP 247SC is a combined insecticide of two active ingredients to control a wide range of insect pests in a variety of crops. Thiamethoxam belongs to the group of Neonicotinoid pesticides and Lambda-cyhalothrin is a synthetic pyrethroid.



CROPS & APPLICATION RATES:

CROPS: Tomatoes, cabbages----- Aphids, Caterpillars, Whiteflies
French beans ----- Thrips, Aphids, Caterpillars,
Whiteflies

Capsicum----- Aphids, Caterpillars, Whiteflies
Rates: 150ml/Ha

Roses ----- Aphids, Whiteflies, Caterpillars

Rates: 150ml/Ha

Mealy bugs

Rates: 300ml/Ha

Pre-harvest Interval (PHI): Cabbage & capsicum-3 days,
Tomatoes & french beans-5day

PACK SIZES: 100 ml, 200 ml, 500 ml, 1 litre



SULBAN[®] 48 EC

Chlorpyrifos 480g/L

WHO Class - II

FEATURES & USES: SULBAN[®] 48EC is a broad spectrum insecticide and acaricide that works by contact, fumigant and stomach action. It has an outstanding and versatile usage in Pineapple (As seed treatment) to control Mealy Bugs, as well as ants and termites in construction sites and finished structures.



MODE OF ACTION: It is a cholinesterase inhibitor with Contact, fumigant and stomach action.

CROPS & APPLICATION RATES:

Pineapple ----- : 30-40ml/20L of water

Seed Beds----- : 1-5 Ltr/10 square metres

Concreeete Building --- : 6-12Ltr/1m length of foundation.

Timber ----- : 1 Ltr /24 Ltr of water (40ml/L water)

Pre-harvest Interval (PHI): 30 days

PACK SIZES: 100ml, 200ml, 1litre, 5 litres



SKANA SUPER

Malathion 2% + Permethrin 0.3% Dust **GRAIN STORAGE DUST**

WHO Class - IV



Cadelle



Granary weevil



Angoumois grain moth



Red flour beetle



Bean Weevil



Lesser grain borer

FEATURES & USES: SKANA® Super is a grain dust with excellent control of larger grain borers and weevils in stored grain.

MODE OF ACTION: Cholinesterase inhibitor, non systemic, combines contact, stomach and respiratory action.

CROPS & APPLICATION:

Cob-maize: Sprinkle Skana Super after every layer of 30-40cm (approximately 50gm of SKANA® Super Dust for every two bags of cob maize).

Shelled Grain: (Maize, beans etc.) Dust at the rate of 50gm /bag (90kg) and mix thoroughly using a shovel on canvas.

PACK SIZES:

- 100 gm,
- 250 gm,
- 500 gm,
- 1 kg,
- 25 kg



HOW TO PRESERVE YOUR CEREALS

1. Harvest maize when mature
2. Shell Winnow by hand or by machine.
3. Make sure the maize cob/grain are thoroughly dry.
4. Winnow to remove dust, dirt and pieces of seeds to retain only clean grain.
5. Spread grain and place the proposed amount of SKANA® SUPER GRAIN DUST (50 g per 90kg sack).
6. Mix thoroughly with SKANA® SUPER GRAIN DUST
7. Put grain mixed with insecticide loaded in clean bags and sew. It's better to spray the bags before filling grains and cereals
8. Sprinkle warehouse with insecticide before storing sacks of grain mixed with insecticide.

TREMOR® GR 0.05

Beta-cyfluthrin 0.5g/Kg

WHO Class -IV

FEATURES & USES: TREMOR® GR 0.05 is a granular synthetic pyrethroid insecticide with contact and stomach action for the control of maize stalk borers.

MODE OF ACTION: Contact and stomach poison which combines a rapid knock-down effect with long lasting effect.

CROPS & APPLICATION: TREMOR® GR 0.05 granules are to be applied into maize funnels. Apply one brief shake of the applicator to the funnels of each maize plant.

Pre-harvest Interval (PHI): 30 days

PACK SIZE: 500gm, 1kg



VAPCOMIC® 1.8 EC

Abamectin 18g/L

WHO Class -II

FEATURES & USES: VAPCOMIC® 1.8 EC is a highly effective acaricide and insecticide. It has limited plant systemic activity but exhibits translaminar movement for the effective control of spider mites on Roses, Tomatoes & Beans and leafminer on French beans.



Spidermites



Leafminer

MODE OF ACTION: It has contact and stomach action. **DIRECTIONS FOR USE:** Apply at first signs of infestation. Ensure even coverage of leaf surface. Where repeated applications may be necessary due to high pest pressure.

CROPS & APPLICATION RATES:

- CROP:** French beans --- Leafminers
Rates: 6ml / 20L or 30ml / 100L (300-350ml / Ha)
 Roses ----- Spider mites
Rates: 7ml / 20L or 35ml / 100L (300-350ml / Ha)
Pre-harvest Interval (PHI): 3-7 days.
PACK SIZES: 30 ml, 100 ml, 250ml, 1 litre



Insect chart

This insects chart contains, common insect pests of crops & remedy products.



Armyworm

- Alpha Degree® 10%
- Stirrup® 247SC
- Sulban® 48EC
- Nimbecidine®
- Bio-Power®
- Betafos® 263 EC



Bean fly

- Dynamo® 70WG
- Nimbecidine®



Cutworm

- Alpha Degree® 10%
- Stirrup® 247SC
- Sulban® 48EC
- Nimbecidine®
- Bio-Power®
- Final® flight 25wg



Diamond-back Moth and damage on Cabbage

- Alpha Degree® 10%
- Stirrup® 247SC
- Atom® 2.5SC
- Cyro-Guard® 75WP
- Frend® 5WP
- Nimbecidine®



Hairy caterpillars

- Alpha Degree® 10%
- Stirrup® 247SC
- Sulban® 48EC
- Nimbecidine®
- Bio-Power®
- Segatron Ultra® 88HEC
- Frend® 50WP
- Betacyde® 25EC®



Leaf miner (Adult fly inset)

- Alpha Degree® 10%
- Stirrup® 247SC
- Cyro-Guard® 75WP
- Sulban® 48EC
- Vapcomic® 1.8EC
- Nimbecidine®
- Final® flight 25wg

Insect chart

This insects chart contains, common insect pests of crops & remedy products.



- Sulban® 48EC
- Nimbecidine®
- Alpha Degree® 10%

Leaf Hopper

(Inset: Damage on potato)



- Stirrup® 247SC
- Nimbecidine®
- Bio-Power®
- Alpha Degree® 10%
- Segatron Ultra® 98%EC
- Frend® 50WP
- Betacyde® 25EC*

Legume pod borer



- Stirrup® 247SC
- Sulban® 48EC
- Nimbecidine®
- Betafos® 263 EC

Locusts



- Alpha Degree® 10%
- Oshothion® 50EC
- Nimbecidine®
- Segatron Ultra® 98%EC
- Frend® 50WP
- Betacyde® 25EC

Orange dog



- Sulban® 48EC
- Dynamo® 70 WG
- Nimbecidine®
- Bio-Catch®
- Final flight 25wg

Pineapple mealybug

(Damage on pineapple)



- Alpha Degree® 10%
- Stirrup® 247SC
- Sulban® 48EC
- Nimbecidine®
- Bio-Power®
- Frend® 50WP
- Segatron Ultra® 98%EC
- Betacyde® 25EC

Pink bollworm



- Stirrup® 247SC
- Nimbecidine®
- Bio-Power®
- Segatron Ultra® 98%EC
- Frend® 50WP
- Betacyde® 25EC

Semi-looper



- Vapcomic® 1.8EC
- Nimbecidine®
- Segatron Ultra® 98%EC

Spider mites (Two-spotted and Red spider mite)



- Stirrup® 247SC
- Nimbecidine®
- Bio-Power®
- Frend® 50WP
- Segatron Ultra® 98%EC
- Betafos® 263 EC

Boll worm Spodoptera sp.



- Stirrup® 247SC
- Alpha Degree® 10%
- Betacyde® 25EC
- Nimbecidine®
- Tremor®

Maize stalk borer



- Stirrup® 247SC
- Dynamo® 70 WG
- Sulban® 48EC
- Nimbecidine®

Mango seed (stone) weevil



- Stirrup® 247SC
- Alpha Degree® 10%
- Sulban® 48EC
- Nimbecidine®

Ootheca sp. & Monolepta sp. (Foliage beetles) & damage on bean leaf



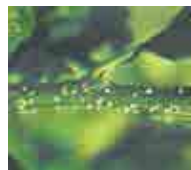
- Stirrup® 247SC
- Alpha Degree® 10%
- Sulban® 48EC
- Nimbecidine®
- Accent® 600SC

Plant bugs/ coried bugs



- Stirrup® 247SC
- Sulban® 48EC
- Nimbecidine®

Rhinoceros beetle



- Stirrup® 247SC
- Oshothion® 50EC
- Nimbecidine®
- Bio-Catch®
- Betacyde 25EC*
- Sulban® 48EC

Scales



- Stirrup® 247SC
- Sulban® 48EC
- Nimbecidine®

Systates weevil



- Stirrup® 247SC
- Final flight 25wg
- Dynamo® 70 WG
- Nimbecidine®
- Bio-Catch®
- Betacyde 25EC*
- Bio-magic®
- Enzo® 20% SP / SL
- Accent® 600SC

Thrips



- Dynamo® 70 WG
- Atom® 2.5SC
- Nimbecidine®
- Bio-Catch®
- Segatron Ultra® 98%EC
- Betacyde25EC*
- Bio-magic®
- Enzo® 20% SP / SL
- Accent® 600SC

White flies



- Stirrup® 247SC
- Alpha Degree® 10%
- Sulban® 48EC
- Nimbecidine®
- Bio-Power®
- Frend® 50WP

African bollworm



- Stirrup® 247SC
- Alpha Degree® 10%
- Sulban® 48EC
- Nimbecidine®
- Final flight 25wg

Antestia Bug



- Stirrup® 247SC
- Dynamo® 70 WG
- Atom® 2.5SC
- Sulban® 48EC
- Nimbecidine®
- Bio-Catch®
- Bio-Power®
- Final flight 25wg
- Segatron Ultra® 98%EC
- Betacyde 25EC*
- Bio-magic®
- Enzo® 20% SP / SL

Aphids



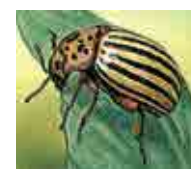
- Stirrup® 247SC
- Nimbecidine®
- Bio-Power®

Blister beetle



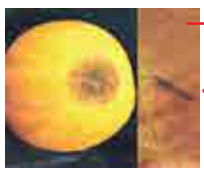
- Sulban® 48EC
- Nimbecidine®

Citrus black fly



- Stirrup® 247SC
- Alpha Degree® 10%
- Oshothion® 50EC
- Nimbecidine®
- Bio-Power®

Colorado Potato Beetle



- Nimbecidine®

False codling moth



- Stirrup® 247SC
- Nimbecidine®

Fruit fly and damage on Citrus



- Alpha Degree® 10%
- Nimbecidine®
- Bio-Power®
- Segatron Ultra® 98%EC
- Frend® 50WP
- Betacyde 25EC*

Bollworm (Helicoverpa armigera) on French bean. Inset: Adult moth; worm on tomato.

COMPANION[®] 75 WP

Carbendazim 12% w/w / Mancozeb 63% w/w WHO Class III

FEATURES & USES: COMPANION[®]75WP is a curative and preventive fungicide with broad spectrum, systemic and contact activity in the control of bean Rust, Anthracnose, Angular leafspot, Botrytis and other fungal diseases on French beans. It has long disease control duration.

DIRECTIONS FOR USE: It recommended that you avoid weather conditions that favour drift. Use a water volume of 1000 Litres per her Hectare.

CROPS & APPLICATION RATES:

CROPS: DISEASE:
Roses ----- Downy Mildew and Botrytis:
Rates: (25g/20L) (20g/15L) 1.25kg/ha

Carnation ----- Fusarium
Rates: (20g/20L) (15g/15L) 1.0kg/ha

PACK SIZES: 1 KG



CONTROL[®] 70 WDG

Thiophanate Methyl 70% WHO Class IV

FEATURES & USES: CONTROL[®] 70WDG is a dry-flowable systemic formulation which has fungitoxic effect on fungi. It can also be used additionally as a wound protectant for pruning cuts on trees. It is absorbed by leaves and roots and is extensively used on fruits, vegetables and cereals. It is effective against a wide range of fungal diseases including scab, powdery mildews, canker, Botrytis and Sclerotinia spp. leaf spot diseases, and Fusarium spp., etc, on vegetables, fruits and flowers etc.



MODE OF ACTION: Systemic fungicide with curative and protective action.

CROPS & APPLICATION RATES:

CROP: DISEASE:
Vegetables e.g. French beans - Botrytis
Rates:16g/20Ltrs of water (800g/Ha)

Roses ----- Botrytis
Rates: 12g/20Ltrs of water (600g/Ha)
Carnations ----- Dumping off
Rates: 4kg/ha (1litre/m²) (Drenching)

Pre-harvest Interval (PHI): 10 days.
PACK SIZES: 100gm, 200gm, 1 kg, 25kg



KLASSIC[®] 5 EC

HEXACONAZOLE 50G/L WHO Class III

FEATURES & USES: KLASSIC[®] 5EE is a systemic fungicide with protective, curative action used to control many fungi, particularly Ascomycetes and Basidiomycetes in vegetables, flowers, legumes, fruit trees, etc.

MODE OF ACTION: It works by inhibiting ergosterol biosynthesis (it is a steroid demethylation inhibitor), a principal sterol in most fungi that is an essential component in membrane structures. It has strong antisporeulant and translaminar action.

BENEFITS: Long protective period due to systemic properties. • Effective at relatively low dosages. • Relatively low toxicity to mammals, birds, fish and beneficial insects. • Additional control of soil borne pathogens like Fusarium, Sclerotinia and Rhizoctonia

CROPS & APPLICATION RATES:

Anthracnose & Sclerotinia Leaf rust, Leaf spots, Powdery mildew Rates: 20ml/20L 1.0L/ha
Stem rust, leaf rust, yellow rust, and blotches (Septoria spp.) Rates: 1.0 - 1.25L/ha

CROPS: Vegetables, e.g. french beans, flowers e.g. roses & carnations, cabbage, tomato, potato, chillies, peas, potato, cotton, okra, egg plant, coffee, tobacco, rice & wheat.

PACK SIZES: 500ml, 1 litre, 5 litres

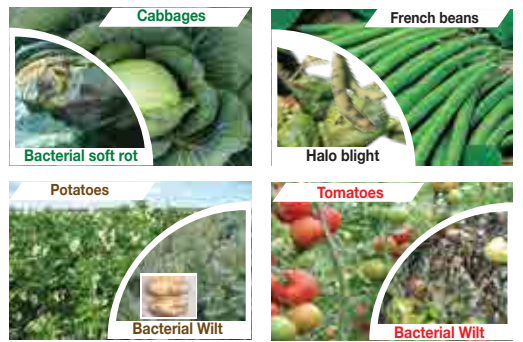


ENRICH[®] BM

Bronopol 27% w/w WHO Class - II

FEATURES & USES: Broad spectrum immunomodulator cum plant defence activator with preventive properties in control of bacterial diseases.

MODE OF ACTION: Broad spectrum Immunomodulator cum plant defence activator with prophylactic and preventive properties in controlling the bacterial diseases among crops. **APPLICATION:** [Excellent results in combination with Oshothane 80WP] Some fungal pathogens occur together with bacterial pathogens; controlling the bacterial pathogens first with Enrich BM ensures more efficient control of the fungal pathogens with OSHOTHANE[®] 80 WP. Apply preventively before disease sets in.



ENRICH[®] BM works like a vaccination; When used early, it activates the plants natural defenses against bacterial disease.

CROPS & APPLICATION RATES:

CROP: DISEASE:
Cabbages ----- Bacterial soft rot
Potatoes & Tomatoes --- Bacterial wilt
French beans ----- Halo blight

Rates: 20g/60L of water (140g/ha)
Pre-harvest Interval (PHI): 7 days.

Some fungal pathogens occur together with bacterial pathogens; Mixing **ENRICH BM[®]** with **OSHOETHANE 80 WP** ensures more efficient control of the fungal pathogens.

PACK SIZES: 20gm, 100gm, 1kg



FUNGINIL[®] 720 SC

Chlorothalonil 720g/L WHO Class II

FEATURES & USES: Fungicide for control of Botrytis and Downey Mildew

MODE OF ACTION: Chlorothalonil acts essentially by protecting the plant against disease infection. Thus, for best disease control, FUNGINIL 720SC must be present on the plant prior to the onset of infection. Infection is prevented as a result of certain interactions between chlorothalonil and fungal cells, which ultimately result in loss of cell viability.



DIRECTIONS FOR USE: For knapsack and tractor sprayers half fill spray tank with clean water. Add correct amount of FUNGINIL 720SC to the spray tank. Agitate mixture well. Fill sprayer to capacity, stir again and start spraying. Spray to ensure thorough coverage.

CROPS & APPLICATION: Botrytis and Downey Mildew: 60ml in 20 Litre of water (2Litre /ha)

PACK SIZES: 500ml, 1 litre, 5 litres



FLOSUL PLUS[®]

Sulphur 80g/L WHO Class II

FEATURES & USES: FLOSUL PLUS[®] is a flowable suspension concentrate of Sulphur for control of Powdery Mildew on vegetables. The high suspensibility gives it a homogenous distribution of sulphur in spray. The liquid stickers give it a greater adhesion and rain fastness. No need for pre-mix hence saves time, energy and labour.



MODE OF ACTION: Non-systemic, protective fungicide with contact and vapour action

RATE OF APPLICATION RATES:

CROPS: DISEASE:
French beans, tomatoes, - Powdery mildew
capsicums ----- Powdery mildew
Roses ----- Powdery mildew
Rates: 20-40 ml/20Ltrs of water (1-2 Ltrs/ha)
Carnations ----- Rust
Rates: 20ml/20Ltrs of water (2 Ltrs/ha)

Pre-harvest Interval (PHI): 10 days.
PACK SIZES: 500ml, 1 litre, 5 litres



MANCOFLO[®] 455 SC

Mancozeb 455g/L WHO Class II

FEATURES & USES: MANCO FLO[®] 455SC is a liquid suspension of Mancozeb for the protective control of a wide range of fungal diseases on a variety of crops such as blight, leaf spot, downy mildew, scab, botrytis, early and late blights, anthracnose, grey & Septoria, leaf spot, downy mildews.



MODE OF ACTION: Contact, residual and protective antifungal activity and inhibits spore germination.

OTHER FEATURES AND BENEFITS:

- Convenient liquid suspension concentrate
- No need for pre-mixes (saves time and labour)
- Easy to pour and measure
- No dust - thus minimum exposure to hazard
- Less abrasive to expensive spray equipment

CROPS & APPLICATION: French beans Anthracnose

CROP: DISEASE:
Tomatoes ----- Early & Late Blight
Peas ----- Anthracnose & Ascocytha Blights
Roses ----- Botrytis (Stem & Flower)

Rates: 40ml/20L of water (2L/1ha)
Preharvest Interval (PHI): 14 days for vegetables
PACK SIZE: 250ml, 500ml, 1 litre, 5 litres,



Metalaxyl 80g/kg + Mancozeb 640g/kg

MATCO® 72

FUNGICIDE

WETTABLE POWDER

WHO Class III

FEATURES & USES: MATCO®72WP is a systemic and contact fungicide for the control of downy mildew, Early & late blight, purple blotch, *aschochyta*, dumping off, black rot, blight, *antracnose*, *cercospora*, leafspot.

MODE OF ACTION: MATCO®72WP has metalaxyl which is a systemic fungicide with protective and curative action. It is readily and rapidly translocated throughout the plant where it controls the fungi. The Mancozeb component gives MATCO®72WP contact protective antifungal activity by inhibiting spore germination.



CROPS & APPLICATION RATES:

CROP:	DISEASE:
Potatoes & Tomatoes -	Early & late blight
Onions -----	Downy mildew, purple blotch
Snow peas -----	Downy mildew, aschochyta
Cabbage -----	Dumping off, black rot
Pepper -----	Blight, antracnose, cercospora, leafspot
Roses -----	Downy mildew

Rates:

250 - 300g / 100Ltrs of water
50 - 60g / 20Ltrs of water
(2.5 - 3.0 kg/ha)

Pre-harvest Interval (PHI):

Tomatoes, potatoes, cabbage, pepper, snow peas: 14 days



MICRO PLUS® DISPERS 74.5 WDG

Tebuconazole- 4.5% + Sulfur-70.0% WHO Class III

For preventative or curative fungicide program.

MICRO PLUS DISPERS 74.5 WDG is an advanced, broad spectrum premix fungicide that contains tebuconazole, a triazole group systemic fungicide that is absorbed and trans-located in the vegetative part of the plant and sulfur, a non systemic fungicide that works through contact and vapor action. It offers an easy and safe application on most crops, mainly against powdery mildews and rust.

DIRECTIONS FOR USE: The first application should be done at the first sign of disease and repeated at 10 days interval. Generally 2-3 applications are necessary for good disease control. Apply MICRO PLUS DISPERS 74.5 WDG in 1000 litres of water per Hectare.

CROPS & APPLICATION RATES:

CROP:	DISEASE:
Roses -----	Powdery mildew
Carnations -----	Rust

Rates: 30gm / 20ltrs of water (1.5 kg/ha)

PACK SIZES: 1kg



Powdery Mildew on Roses



Rust on carnation



MISTRESS® 72

Cymoxanil 8% + Mancozeb 64%

WHO Class IV

Cost Effective !! Low application rate 40g/20 litres (2kg/ha) • Curative and preventive action • Long residual action • Multi site activity • Fast acting

FEATURES & USES: MISTRESS®72 is a broad-spectrum unique fungicide formulation containing a mixture of both systemic and contact fungicides thus providing outstanding control of diseases such as blights, downy mildew, purple blotch on a variety of crops. It ensures durable protection of the target plants during periods of active growth.



Late blight (Tomatoes) Downy mildew (Onions) Downy mildew (Rose) Anthracnose (Beans) Early blight (Potato leaf)

MODE OF ACTION:

Cymoxanil: contact and local systemic activity and also inhibits sporulation. Has both protective and curative action.
Mancozeb: contact, residual and protective antifungal activity and inhibits spore germination.

BENEFITS: Strong contact as well as translaminar action. MISTRESS®72 provides long duration of control • Best in controlling resistant populations of fungi • Provides Manganese and Zinc nutrition, keeping plants green and healthy.

CROPS & APPLICATION RATES:

CROP: Potatoes, tomatoes, onions, cucurbit, beans, ornamentals, roses.

Rates: 40gms/20L of water (2kg/Ha)

Pre-harvest Interval (PHI): 10 days

PACK SIZES: 30gm, 40gm, 60gm, 80gm, 120gm, 240gm, 500gm, 1 kg, 2.5kg & 20kg



OSHOTHANE PLUS® 75WDG

Mancozeb 750g/kg

WHO Class III

FEATURES & USES: OSHOTHANE PLUS®75WDG is a broad-spectrum protective fungicide that controls a wide range of fungal diseases on a variety of crops.



MODE OF ACTION: Non-specific thiol reactant, inhibiting respiration. Fungicide with protective action.

BENEFITS: It has optimum coverage per application as compared to WP formulations, hence a better efficacy. It has stable suspensibility over a longer period. It has superior dispersibility, which minimizes the stains / residues on the crop. It is dust free, has little inhalation hazard and is easier to measure - so more friendly to sprayers. There is no clogging and abrasion in the nozzles.

CROPS & APPLICATION RATES:

CROP: Potatoes ----- Early and Late blight
Tomatoes ----- Botrytis, Anthracnose, Septoria leaf spot
Onions ----- Botrytis leaf blight
Roses ----- Botrytis and Black spot
French beans ----- Sclerotinia, Angular leaf spot,
Anthracnose, Botrytis

Rates: 30-40gms/20Ltrs of water (1.5kg-2.0kg/ha)

PACK SIZES: 1kg



PEARL® Extra 500SC

Carbendazim 500g/l

WHO Class III

FEATURES & USES: PEARL Extra®500SC is a systemic, broad-spectrum fungicide with protective and curative action. Controls Botrytis, Leaf spots, Ascocyta, Damping-off, Anthracnose, White mould, Fusarium wilt, Powdery mildew, Stem rot, Alternaria blight, Fruit rot, etc on several crops such as flowers and vegetables by drenching. PEARL Extra®500SC may also be used to control soil borne pathogens.



Anthracnose



Botrytis



Septoria blotch (Wheat)



Fusarium wilt (cabbage)



Leafspots

MODE OF ACTION: Inhibits beta-tubulin synthesis, development of the germ tubes, formation of appressoria and growth of mycelia. It is absorbed through the green tissues and roots, with translocation acropetally.

FEATURES AND BENEFITS:

- * Convenient liquid suspension concentrate
- * No need for pre-mixes (saves time and labour)
- * Easy to pour and measure
- * No dust - thus minimum exposure to hazard

CROP & APPLICATION RATES:

All crops: 20ml /20L 1Lt/Ha

Pre-harvest Interval (PHI): 7 days

PACK SIZES: 100 ml, 200 ml, 1 litre



OSHOTHANE® 80 WP

800g/Kg Mancozeb w/w

WHO Class III

FEATURES & USES: OSHOTHANE®80WP is broad-spectrum protective fungicide that controls a wide range of fungal diseases on a variety of crops. OSHOTHANE®80WP can be used for the control of fungal diseases such as blight, leaf spot, downy mildew, scab, etc., in field crops, fruit, nuts, vegetables, ornamentals, etc. It is especially effective in the control of early and late blights of potatoes and tomatoes, gray & Septoria leaf spot diseases on vegetables, roses, carnations, asparagus, and beans.



MODE OF ACTION: Non-specific thiol reactant, inhibiting respiration. Fungicide with protective action.

CROPS & APPLICATION RATES:

Potatoes Tomatoes: 50g/20L (1.6-2.25 kg /ha)
Field crops, Fruit, Nuts, Vegetables, Ornamentals.

Vines, onions, leeks, lettuce, cucurbits, ornamentals and tobacco. Bananas. Beans and cucurbits Vegetables: 50g/20L (2 - 2.25kg/ha)

Pre-harvest Interval (PHI): 7 days for most crops.

PACK SIZES: 50 gm, 100 gm, 200 gm, 500 gm, 1 kg, 2.5 kg, 5 kg



WETSULF® 80WP

Sulphur 80% WP

WHO Class IV

FEATURES & USES: WETSULF®80WP is a non-systemic protective fungicide with contact and vapour action. It is a micronized wettable formulation of Sulphur that also has secondary acaricidal activity.

MODE OF ACTION: Non-specific thiol reactant, inhibiting respiration.

MAIN FEATURES AND BENEFITS:

- Majority of the sulphur particles range between 3-5 microns for maximum fungicidal effect.
- Contact action inhibits spore germination.
- Has secondary advantage of reducing mite populations.
- Supplies sulphur (an essential plant nutrient).
- No build-up of resistance by either pathogens or mites.

CROPS & APPLICATION RATES:

CROPS: Roses, vegetables, coffee citrus, apples, pears, peaches, fruit, cereals, ornamentals and in forestry.

Rates: 40-160g/20Ltrs of water (2-3 kg/ha)

Pre-harvest Interval (PHI): 7 days for most crops.

PACK SIZES: 500 gm, 1 kg



Scab



Powdery mildew (Roses)



Powdery mildew (Tomato)

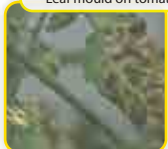


SpiderMites



All the diseases below have reliable solutions from Osho® range of fungicides

Leaf mould on tomato plant



Oshothane® 80WP (P)
Matco® 72WP (C)
Mistress® 72WP (C)

Fusarium wilt



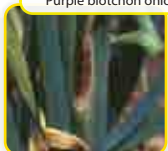
Pearl® Extra 500SC (C)
Control® 70DF (C)
Bio-cure F (P)

Septoria blotch (Wheat)



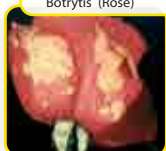
Pearl® Extra 500SC (C)

Purple blotch on onions



Matco® 72WP (C)
Mistress 72® (C)

Botrytis (Rose)



Bio-Cure B®
Control® 70DF (C)
Pearl® Extra 500SC (C)
Companion® 75WP(P)/(C)
Funginil® 720SC (P)

Powdery mildew on mangoes



Klassic®5EC (P)/(C)

Bacterial leaf spot



Mix ENRICH BM® with OSHOTHANE 80 WP ensures more efficient control of Bacterial leaf spot

Powdery mildew in Roses



Pearl® Extra 500SC (C)
Bio-Dewcon®
Klassic®5EC (P)/(C)

Potato leaf roll virus



Control Insect pests with
Alpha Degree® 10%
Nimbecidine®
Segatron Ultra® 98%

KEY: (P) represents PREVENTIVE products | (C) represents CURATIVE products


All the diseases below have reliable solutions from Osho® range of fungicides

Alternaria leaf spot (whole leaf)



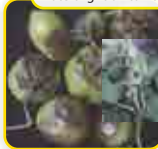
Control® 70 DF (C)
Pearl® Extra 500SC (C)

Bean anthracnose



Oshothane® 80WP (P)
Pearl® Extra 500SC (C)
Control® 70 DF (C)

Late blight on tomato and potato




Oshothane® 80WP (P)
Matco® 72 WP (C)
Mistress 72® WP (C)

Anthraxnose on watermelon and grape leaves




Oshothane® 80WP (P)
Pearl® Extra 500SC (C)
Control® 70 DF (C)

Ascochyta in snowpea and pods



Control® 70 DF (C)

Cercospora leaf spot




Oshothane® 80WP (P)
Matco® 72WP (C)
Pearl® Extra 500SC (C)

Anthraxnose on tomato and pepper




Pearl® Extra 500SC (C)
Control® DF (C)
Oshothane® 80WP (P)

Bitter rot on apple



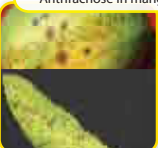
Control® 70DF (C)
Pearl® Extra 500SC (C)

Downey mildew on grapes and broccoli



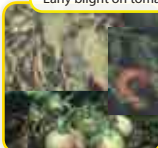
Oshothane® 80WP (P)
Matco® 72WP (C)
Pearl® Extra 500SC (C)
Companion® 75WP(P)/(C)
Funginil® 720SC (P)

Anthraxnose in mangoes



Control® 70 DF (C)
Pearl® Extra 500SC (C)
Wetsulf® 80WP (P)

Early blight on tomato fruit and potato leaf




Oshothane® 80WP (P)
Matco® 72WP (C)
Mistress 72 WP (C)

Downey mildew on onions




Oshothane® 80WP (P)
Mistress® 72WP (C)
Companion® 75WP(P)/(C)
Funginil® 720SC (P)

Powdery mildew in Cucubit leaf and snowpea



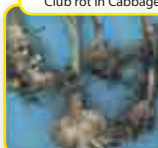
Wetsulf® (P)
Pearl® Extra 500SC (C)
Bio-Dewcon®
Klassic®5EC (P)/(C)

Angular leaf spot




Oshothane® 80WP (P)
Pearl® Extra 500SC (C)
Control® 70 DF (C)

Club rot in Cabbages




Control® 70 DF (C)

Scab in fruits




Pearl® Extra 500SC (C)
Oshothane® 80WP (P)
Wetsulf® 80WP (P)

Fusarium yellows on cabbage



Pearl® Extra 500SC (C)
Control® 70DF (C)
Bio-cure F (P)

Bacterial wilt in potato and tomato




Enrich® BM (P)

Sclerotinia rot on lettuce




Pearl® Extra 500SC (C)
Bio-Cure B®

Black rot in cabbage head and leaf




Enrich® BM (P)
Klassic®5EC (P)/(C)

Bacterial Canker




Enrich® BM (P)

Leaf blotches



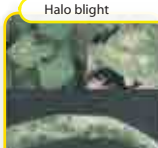
Oshothane® 80WP (P)
Pearl® Extra 500SC (C)
Matco® 72WP (C)

Bacterial spot and specks in tomato and pepper



Enrich® BM (P)

Halo blight



Enrich® BM (P)
Mistress®
Matco® 72WP (C)

Root rot / Damping off in seedlings



Oshothane® 80WP (P)
Matco® 72WP (C)
Bio-Cure B®

Tomato leaf curl virus



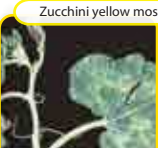
Control Insect pests
Dynamo®70 WG
Nimbecidine®
Segatron Ultra® 98%

Water melon mosaic virus



Control Insect pests with
Alpha Degree® 10%
Segatron Ultra® 98%

Zucchini yellow mosaic virus



Control Insect pests with
Alpha Degree® 10%
Nimbecidine®
Segatron Ultra® 98%

Barley yellow dwarf virus




Control Insect pests
Alpha Degree® 10%
Segatron Ultra® 98%

Woodiness virus in passion fruit



Control insect pests with
Alpha Degree® 10%
Nimbecidine®
Segatron Ultra® 98%

Woody passionfruit virus



Control Insect pests
Alpha Degree® 10%
Nimbecidine® (P)
Segatron Ultra® 98%

KEY: (P) represents PREVENTIVE products
(C) represents CURATIVE products

D-AMINE[®] 72

2,4-Dichlophenyl Acetic Acid (600g/ltr) [2,4-D] WHO Class - III

FEATURES & USES: D-AMINE[®]72 is a systemic, selective post-emergence herbicide for the control of annual and perennial broad-leaved weeds.



MODE OF ACTION:

The salt is readily absorbed by the roots. Translocation occurs with accumulation principally at the meristematic regions of shoots and roots, acting as a growth inhibitor.

CROPS & APPLICATION:

Maize, Sorghum, Orchards, Sugar cane, Rice, Wheat: 120-150ml in 20 Ltr (1.5 - 2.5 Ltr/ha)

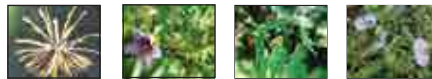
PACK SIZES: 500ml, 1litre, 5 litres, 20 litres



HerbiKill[®] 200SL

Paraquat 20%w/v WHO Class - II

FEATURES & USES: HERBIKILL[®]200SL is a non-systemic, non-selective, post-emergence herbicide used for the control of a wide variety of grasses and broad-leaved weeds. It kills all green tissues. It can be used in plantation/row crops, minimum tillage for vegetables and cereals, as well as on non-crop land. This herbicide can be used for the broad-spectrum control of weeds in fruit orchards, plantation crops (bananas, coffee, etc.), tea, sugar cane, ornamental trees and shrubs in forestry, etc. It is rapidly degraded in soil.



Black jack (*Bidens pilosa*)

Sodom Apple

Gallant soldier

Comelina sp.

MODE OF ACTION: Non-selective contact herbicide, absorbed by the foliage, with some translocation in the xylem. During photosynthesis, superoxide is generated which damages cell membranes and cytoplasm

APPLICATION RATES: Broad leaved weeds and grasses: 2L/Ha (in 400Ltr of water)

PACK SIZES: 200 ml, 500 ml, 1 litre, 5 litre, 20 litre,



KICK-OUT[®] 480 SL

Isopropylamine salt of Glyphosate 480g/L WHO Class - III

FEATURES & USES: KICK-OUT[®]480SL is a systemic, post emergence and non-selective herbicide for the control of a wide variety of annual, biennial and perennial grasses, sedges, broad leaved weeds and woody shrubs. It is used in plantation crops and non-crop land. It is also ideal for clearing vegetation for minimum/zero tillage systems.



MODE OF ACTION: KICK-OUT[®]480SL is a post-emergence systemic herbicide absorbed through the foliage and translocated rapidly from aerial parts to underground roots, stolons, tubers or rhizomes of perennial weeds. The product is inactivated on contact with soil.

APPLICATION RATES: (200-400ml/20ml of water (2.5-3 Ltr/ha)

PACK SIZES: 200ml, 500ml, 1litre, 5 litres, 20 litres



MOTO[®] PLUS 75 WDG

Metribuzin 750g/Kg WHO Class - III

FEATURES & USES: MOTO PLUS[®].75WDG is a broad spectrum, selective pre-emergence and early post-emergence herbicide. This systemic herbicide is absorbed predominantly by the roots, but also by the leaves, with translocation acropetally in the xylem. MOTO PLUS[®].75WDG is used for the pre- and early post-emergence control of many grasses and broad-leaved weeds in sugar cane, baby corn, maize, cereals, potatoes, tomatoes, soya bean, potatoes, carrots, etc.



MODE OF ACTION: Absorbed predominantly by the roots, but also by the leaves with translocation acropetally in the xylem.

APPLICATION RATES:

Baby corn & Maize ----- 30-60g/20Ltrs of water (750g/ha)

Tomatoes ----- 38g/20Ltrs of water 750g/ha)

Potatoes, soybeans ----- 15g/20Ltrs of water (750g/ha)

Carrots ----- 15g / 20Ltrs of water (750g/ha)

NOTE: It is advisable to apply MOTO not more than 2 days after sowing.

For pre-weed emergence treatment, adequate soil moisture is required.

For best results, treatment should be followed by irrigation/rain.

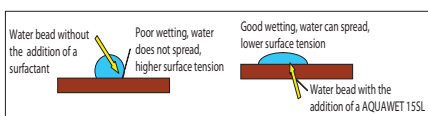
PACK SIZES: 50 gm, 100 gm, 500 gm, 1 kg



AQUAWET[®] 15SL

Nonyl Phenol Ethoxylate 15%

FEATURES & USES: AQUAWET[®]15SL is a liquid agricultural wetter, spreader and sticker. It improves retention of spray on plant surfaces and enhances distribution of spray over plant foliage. AQUAWET[®]15SL reduces the surface tension of the spray mixture, thus improving wetting properties. AQUAWET[®]15SL improves the spreading properties of pesticides and foliar fertilizers thus improving their efficacy.



APPLICATION RATES:

Fungicides: 5-10ml/20lt of spray water (250-500ml in 1000Lts of spray mixture.)

Insecticides: 10-15ml/20lt of spray water (500-750ml in 1000Lts of spray mixture)

Herbicides: 20-25ml/20lt of spray water (1Lt-1.25Lt in 1000Lts of spray mixture.)

PACK SIZES: 30ml, 100ml, 500ml, 1 litre, 5 litres, 20 litres



GREEN MIRACLE[®]

Fatty alcohol and diluent - 80.00%

FEATURES & USES: GREEN MIRACLE[®] is an a non-toxic, reflectant type of Antitranspirant and surfactant. It is based on long chain fatty alcohol group C₁₈ and is fortified with a balanced combination of amino acids, peptides and low molecular weight Oligopeptides. GREEN MIRACLE[®] is used to minimise the impact of drought and other environmental stresses on plants.



MODE OF ACTION: Reflection agent:

Once applied as a liquid foliar spray, it forms a thin glassy film coat, which reflects the excess light that would otherwise heat up the tissues, -thereby reducing the chances of leaf damage.

Stomatal regulation:

Through regulating the opening and closing of the stomata positively, it helps in minimising the rate of transpiration.

Metabolic type: It acts on spongy parenchyma cells making them into a multi-layered tissue, which leads to reduced intercellular space. It helps the plant maintain the turgor of the tissues.

APPLICATION RATES: 0.5 ml / Ltr

PACK SIZES: 100ml, 500ml, 1 litre



ROOTEX[®] 0.1, 0.25, 0.4, 0.6, 0.8 & 1%

Contains: Indole Butyric Acid (I.B.A) - Powder

FEATURES & USES: ROOTEX[®] is a broad spectrum plant growth regulator used to stimulate rooting of cuttings of herbaceous and woody ornamentals. ROOTEX[®] works with difficult softwood and semi-hardwood cuttings of deciduous plants and evergreens. They will root faster and with a much higher success rate. In propagation, ROOTEX[®] provides a full complement of the essential hormones needed to rapidly initiate root cell formation. In this vital stage of root development, these hormones remain right where they are needed most, at the cut.

APPLICATION RATES: User Instructions: 1. Choose healthy and vigorous cuttings, according to the recommended practice for each crop. 2. If cuttings are not vigorous or fresh, put them in moist condition. 3. Dip lower part of the cuttings in the ROOTEX[®] powder. 4. Remove overdose residues by shaking the cuttings in the container. 5. Plant in rooting substrate.



Indole Butyric Acid (I.B.A) Percentage available packs: -

1. ROOTEX[®]0.1 - 0.1% (I.B.A) 4. ROOTEX[®]0.25 - 0.25% (I.B.A)

2. ROOTEX[®]0.4 - 0.4% (I.B.A) 5. ROOTEX[®]0.6 - 0.6% (I.B.A)

3. ROOTEX[®]0.8 - 0.8% (I.B.A) 6. ROOTEX[®]1.0 - 1.0% (I.B.A)

PACK SIZES: 50gm, 1 KG



Oxyflourfen 240g/L

OXYGOLD[®] 24 EC

WHO Class - III

FEATURES & USES: OXYGOLD 24 EC is a selective pre or post-emergence herbicide for controlling broadleaved weeds and annual grasses in Tomato, Cabbage and onions. After weeds or soil surfaces are sprayed with OXYGOLD 24 EC they should not be disturbed in any manner.

MODE OF ACTION: Selective contact herbicide, absorbed more readily by the foliage (and especially the shoots) than by the roots, with very little translocation. As a pre-emergence, it forms a thin layer on soil after activation with water. Susceptible species absorb OXYGOLD 24 EC through the hypocotyls, at the germination stage.

APPLICATION RATES:

CROP: Onions, Tomatoes ----- 2 days before transplanting (Pre-emergence to weeds).
Cabbages Onions ----- Apply 2 weeks after transplanting.

TARGET: Annual Broad leaved weeds & grasses.

Rates: 50mls/20L of water (1.0L/ha)

PACK SIZES: 1 Litre, 500ml, 200ml, 100ml, 50ml



STRETCH[®] 20 SP

Metsulfuron Methyl 20% WHO Class - II

FEATURES & USES: STRETCH[®] 20 WP is a systemic, selective post-emergent herbicide for the control of broad-leaved weeds in wheat when weeds are young and actively growing.

MODE OF ACTION: The active ingredient is absorbed by roots and foliage and rapidly moved to the growing tips of roots and foliage of plants. Selectivity is based on the plant species' capability to metabolise metsulfuron.

APPLICATION RATES: 20 gm/ha (2g/20Litres)

PACK SIZES: 50g, 100g, 1kg



WOUND-OUT[®] 480SL

Glyphosate 360 g/Lt WHO Class - IV

FEATURES & USES: WOUND-OUT[®] is a broad spectrum, non-selective systemic herbicide for controlling annual, biennial and perennial grasses, sedges and broad-leaved weeds. It is used in plantation crops and non-crop land. It is also ideal for clearing vegetation for minimum/zero tillage systems.



MODE OF ACTION: It works by inhibiting the enzyme EPSPS, thus preventing synthesis of essential aromatic amino acids needed for protein biosynthesis.

BENEFITS: WOUND-OUT[®] is formulated with a Bio-Activator, thus:

- * It is quickly absorbed by the weed foliage.
- * Rapid translocation to roots, stolons, tubers

CROPS & APPLICATION:

Vegetables (Minimum tillage), Maize (Zero-tillage), Tea, Sugar cane, Reduced tillage systems, Coffee, Non-crop areas/ Construction sites, etc.: 2.5-3 Ltr/ha (600ml/20L water)

PACK SIZES: 200ml, 500ml, 1litre, 5 litres, 20 litres



HASTEN

ADJUVANT

FEATURES & USES:

HASTEN is an adjuvant for use as a wetter/spreader with Cosavet 80DF PCPB (CR) 0437 to control powdery mildew on Roses. It is an organosilicone, non ionic based wetting agent that lowers the surface tension of spray solutions. HASTEN helps improve spray droplet adhesion of agrochemicals on plant foliage thus potentially allowing reduction in spray volume. It increases and accelerates foliar absorption of pesticides through the leaves.



APPLICATION RATES: As a wetter/spreader/sticker:

RATES: 8ml/20L (0.4 L/ha)

PACK SIZES: 30ml, 100ml, 500ml, 1 litre, 5 litres, 20 litres



TRANSFORMER[®] 98% E.C.

98% white oil E.C

FEATURES & USES:

TRANSFORMER 98%EC is a wetter/ spreader/ sticker to be used with Manik 20SP and Atom 2.5EC.

APPLICATION RATES:

As a wetter/spreader/sticker:

PRODUCT	CROPS	PESTS/DISEASE
Manik 20SP	Roses	Whiteflies & Aphids
Atom 2.5EC	Roses	Caterpillars & Aphids

RATES: 50ml /20Litres of water



PACK SIZES: 30ml, 100ml, 500ml, 1 litre, 5 litres, 20 litres



PLANTONE[®] 4.5% SL

4.5% aqueous solution of 1- Alpha Naphthalene Acetic Acid (NAA)

FEATURES & USES: PLANTONE[®] 4.5% SL is a plant growth regulator that can be used on a wide range of crops. To induce flowering prevent flower abortion and pre-harvest fruit loss.

Plantone 4.5% SL generally stimulates plant growth. The combined effect of this is increased overall yields, increased fruit size and better quality of produce.



APPLICATION RATES:

A standard spray of PLANTONE[®] 4.5% SL is prepared by mixing 1ml of PLANTONE[®] in 4.5 Litres of water (i.e. 4ml in 20Litres water or 20ml in 100Litres).

PACK SIZES: - 30 ml, 100 ml

HERBICIDES

WETTER | SPREADER | STICKER
ANTITRANSPIRANT | SURFACANT

PLANT HORMONE | BIO STIMULANT

BIO CATCH®

Lecanicillium lecanii 1.15WP WHO Class - IV

FEATURES & USES: BIO CATCH® is a biological insecticide based on a selective strain of naturally occurring entomopathogenic fungus *Lecanicillium lecanii*. It contains spores and mycelial fragments of *Lecanicillium lecanii*. It is used for the control of several insect pests including whiteflies, aphids etc.



MODE OF ACTION: When the spores of *Lecanicillium lecanii* come into contact with the skin of target insects; they germinate and grow directly through the cuticle to the inner body of their host draining the insect of nutrients and eventually killing it.

CROPS & APPLICATION RATES:

100g /20L of water. Ensure thorough coverage of the plant.

(Liquid: 3 Litres/ha Powder: 6 Kg/ha)

NB: Do not make a tank mix with fungicides.

CROPS: Vegetables (e.g. Tomatoes, french beans, Peas, flowers).

PACK SIZES: LF: 1 litre | WP: 1 kg



BIO MAGIC®

Metarhizium anisopliae 1.5LF WHO Class - IV

FEATURES & USES: BIO-MAGIC® is a biological insecticide based on a selective strain of naturally-occurring entomopathogenic fungus *Metarhizium anisopliae*. It contains spores and mycelial fragments of *M. anisopliae*.

MODE OF ACTION: When the spores of *Metarhizium anisopliae* come into contact with the skin of target insects, they germinate and grow directly through the cuticle to the inner body of their host draining the insect of nutrients and eventually killing it in about 3-5 days.

CROPS & APPLICATION RATES:

CROP:	PESTS
Maize, Rice	Beetles
Vegetables, Tomatoes,	
Onion, Cabbage	Beetle, black vine weevil
Cotton	Cotton weevil, termites
Roses	Mealybugs, scales,
	Aphids, thrips

Liquid : 80ml/20L of water (4 L /ha)

Powder : 2.5kg/ha (500 litres of water)

Soil application 2.5kg/ha

PACK SIZES: 1 litre



BIO NEMATON®

Paecilomyces lilacinus 1.5% LF WHO Class - IV

FEATURES & USES: An entomopathogenic fungus for the control of Root Knot nematodes, cyst nematodes, leaf and burrowing nematodes.

MODE OF ACTION: Acts by infecting, parasitizing and killing eggs, juvenile and young adults.

CROPS & APPLICATION RATES:

CROP:	PESTS
Tomatoes, French beans, Roses-	Root knot Nematode
	(<i>Meloidogyne spp.</i>)
	- Cyst Nematode
	(<i>Heterodera spp.</i>)
	- Burrowing Nematode
	(<i>Radopholus similis</i>)

Rates:

Liquid: 120ml / 20 Litres of water (60mls /100m2 (6L/ha)

Powder: 5-6Kg/ha Soil application 50-60 gms / 100m2

PACK SIZES:

WP: 100gm, 500gms, 1kg | LF: 1 litre, 5 litres



BIO POWER®

Beauveria bassiana 1.15% LF WHO Class - IV

FEATURES & USES: BIO-POWER® is a biological insecticide based on a selective strain of naturally - occurring entomopathogenic fungus *Beauveria bassiana*. The product contains spores and mycelial fragments of *B. bassiana* and is available in liquid (1x10⁹ CFU's/ml) and powder (1x10⁸ CFU's/gm) formulation.

MODE OF ACTION: The spore of the fungus when comes in contact with the cuticle (skin) of the target pest insect it germinates and grows directly through the spiracle in the cuticle into the inner body of the host. The fungus by taking nutrients from the insect proliferates and colonizes the entire insect and thus drains the insect of nutrients and the infected insects eventually dies.

CROPS & APPLICATION RATES:

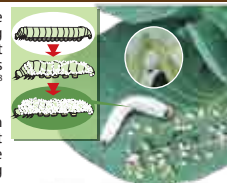
CROP:	PESTS:
Tomatoes & french beans	- Aphids, Bollworms,
	Caterpillars, Cutworm, Thrips
Cabbages	- Aphids, Caterpillars, Cutworms
	& Diamond backmoth

Rates:

Liquid formulation : 60 - 80ml / 20 Ltrs of water (3-4 litres/ha)

Powder formulation : 100-120 g / 20 Ltrs of water (5-6 kilos/ha)

PACK SIZES: WP: 500gm, 1kg | LF: 1litre



MACRONUTRIENTS (PRIMARY NUTRIENTS) These are required by plants in large quantities (100's of kg/ha)

NITROGEN - N

Nitrogen is essential for chlorophyll formation, photosynthesis and overall vegetative growth.



DEFICIENCY SYMPTOMS:

Nitrogen deficiency results in small pale leaves, stunted plants, premature shedding of leaves and early maturity with vegetative growth being shorter than normal. Older leaves lose their green colour first and they may drop.

REMEDY: SYMBION®N, EASYGRO®VEGETATIVE & AGROFEED®



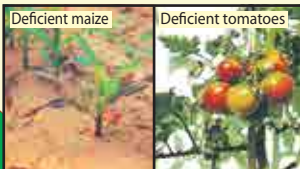
PHOSPHORUS - P

It's Essential - Phosphorus is Required by Plants
Phosphorus is essential for proper root development as well as fruit quality.



DEFICIENCY SYMPTOMS: These include poor root development, dull green leaflets, purple colour on underside of leaves and stems, distorted leaf shape, and stunted plants with thin stems. Older leaves acquire purple colour first.

REMEDY: SYMBION®P, EASYGRO®STARTER, SYMBION VAM PLUS® & POTPHOS®



POTASSIUM - K

It's for Real - Potassium is Required by Plants

Potassium is essential for even ripening of fruits, proper fruit size and colour, as well as plant resistance to stress (e.g. frost, drought, etc).



DEFICIENCY SYMPTOMS: They include marginal chlorosis (yellowing) and scorching of older leaves, weak stalks, poor flavour & colour, and uneven ripening of fruits.

REMEDY: EASYGRO® FLOWER & FRUIT & POTPHOS®



MESONUTRIENTS (SECONDARY NUTRIENTS) These are required by plants in moderate quantities (10's of kg/ha)

CALCIUM - Ca

It's Well Known - Calcium is Required by Plants

Calcium is essential for cell development, Nitrogen metabolism, translocation, and overall fruit development and longevity.

DEFICIENCY SYMPTOMS: Symptoms of deficiency occur on growing tissues and include necrosis and distortion of young leaves; wilting of flower stalks, loss of fruit quality (e.g. blossom-end rot, bitter pit) and lack of fruit firmness.

REMEDY: EASYGRO® CALCIUM & AGROFEED®



Blossom-end Rot in Tomatoes

MAGNESIUM - Mg

It's a Rule - Magnesium is Required by Plants

Magnesium is a key element of chlorophyll production as well as several plant enzymes. It is essential for mobility and utilization of Phosphorus and uniformity of maturity.

DEFICIENCY SYMPTOMS: Deficiency of Magnesium results in interveinal yellowing starting from the tip and margins of the older leaves, leaving a triangular green area at the base of the leaf. Fruits may ripen and drop prematurely.

REMEDY: EASYGRO® range, AGROFEED®



Potatoes

SULPHUR - S

It's the Missing Link - Sulphur is Required by Plants

Sulphur is essential for amino acid formation, activation of enzymes, normal photosynthesis and maturity of plants.

DEFICIENCY SYMPTOMS: Sulphur deficient plants show a generalized yellow colour starting with the younger leaves first. The main leaf veins turn purple in colour.

REMEDY: EASYGRO® range, BRIMSTONE 90® AGROFEED®



FREND[®] 5 WP

Bacillus thuringiensis Var *Kurstaki* 32,000 iu/mg WHO Class - IV

FEATURES & USES: Biological stomach poison insecticide with excellent control of American bollworm and caterpillars.

MODE OF ACTION: Acts through stomach poisoning and anti feedant activity. Larvae die within 3-5 days.

APPLICATION RATES:

CROP: French Beans ----- Caterpillars
Vegetables e.g. cabbages - Cabbage sawfly,
- Diamond-back moth (DBM)

Rates: 10g/20Ltrs of water (500g/ha)

Flowers e.g roses ----- Caterpillars(Spodoptera exigua)

Rates: 0.5g/1Ltr of water (500g/ha)

PACK SIZES: 50gm, 100g, 200gm, 500gm, 2kg



NIMBECIDINE[®]

WHO Class - IV

0.03% EC (300ppm) *Azadirachtin* & other triterpenoids, *meliantriol*, *salannin nimbin*.

FEATURES & USES: A broad spectrum natural neem based preparation for the control of a wide range of insects, red spider mites and nematodes.

MODE OF ACTION: Feeding deterrent, Insect growth regulator, Insecticidal, Sterilant, Oviposition deterrent.

APPLICATION:

CROPS: Tomatoes ----- Aphids, Whitefly, Leaf miner, Spidermites, Whiteflies, Wire worms
French beans ----- Aphids, Spodoptera exigua, Whiteflies, Leaf miner Fruitworm (Helicoverpa armigera), Thrips
Snow peas ----- Thrips, Aphids, Leaf miner, Caterpillar, Whitefly
Cucurbits e.g. Cucumber, Squash, etc. ----- Aphids, Whitefly nymphs, Caterpillar, Leaf miner & Cucumber beetles
Roses ----- Thrips, Aphids, Whiteflies
Tobacco ----- Aphids, Whiteflies, Leaf beetles
Cotton ----- Red Spidermites, Semi looper, African bollworm

Rates: 50-60ml/20Ltrs of water (2.5-3L/ha)

Roses, French beans, Tomatoes ----- Nematodes
Rates: (Drench 2 litres of solution/m²) Repeat every 20days (6-8L/ha)

PACK SIZES: 100 ml, 500 ml, 1 litre, 5 litres, 10 litres

Note: For best Result mix NIMBECIDINE with OSO range of insecticides



BIO CURE-B[®]

Pseudomonas fluorescens 1.5% WHO Class - IV

FEATURES & USES: BIO CURE-B[®] is a talc-based biological fungicide containing *Pseudomonas fluorescens*. It is effective in controlling wilts, root rot, loose smut, (including *Pythium* spp., *Rhizoctonia solani* *Fusarium* spp., *Botrytis cinerea*, *Sclerotium rolfsii*, and *Sclerotinia homoeocarpa* etc.) in plants.



MODE OF ACTION: It controls the pathogen by substrate competition for nutrients available in the soil and leaf phyllosphere.

APPLICATION:

Soil drench: 100 -120 gm/20 Litres
Soil application: 4kg/ha of BIO CURE-B[®] mixed with 1000kgs of organic fertilizer. Mix well and apply.
CROPS: Vegetables: Cucumber, eggplant, tomatoes, chilli, potatoes, flowers & fruits.
PACK SIZES: Powder: 1 kg



BIO CURE-F[®]

Trichoderma viride 1.15% WHO Class - IV

FEATURES & USES: BIO-CURE F is a Biological fungicide for the control of *Fusarium*, *Phytophthora*, *Pythium* and *Verticillium* soil borne diseases eg. Wilt, Damping off, Peanut pod rots, White Mold, Clubroot, Charcoal rot, *Phytophthora* stem rot, Root rot, Root wilt, etc.

MODE OF ACTION:

- It controls through substrate competition, Antibiosis and Mycoparasitism.
- It is a preventative biological (living) fungicide that attacks disease pathogens before they reach the root system. It starts immediately protecting the delicate root system.
- It also grows on root surfaces and surrounding soil particles and provides prolonged protection.

APPLICATION: Liquid : 3 Litres/ha
Powder : 4 Kg/ha

CROPS: Cereals, Pulses, Vegetables & Cole crops, Orchards & Fruit Crops, Ornamental Crops, Oil Seeds, Cash Crops, Beverage Crops, Lawns & Golf Courses
PACK SIZES: Powder : 1 kg
Liquid : 1 Litre



BIO DEWCON[®]

Ampelomyces quisqualis 2.0% WHO Class - IV

FEATURES & USES: BIO-DEWCON[®] is a biological fungicide containing the conidial spores and the mycelial fragments of a selected strain of antagonistic fungus, *Ampelomyces quisqualis*, for the control of powdery mildew.

MODE OF ACTION: Germinating spores suppress the development of powdery mildew by hyperparasitism at a minimum relative humidity of 60%. Once inside the pathogen hyphae (2-4hrs) *Ampelomyces quisqualis* grows intracellularly leading to cessation in development of powdery mildew.

APPLICATION:

100-120 g / 20 Litres as a foliar spray, 2-3 applications necessary.

CROPS: Peas, cucurbits, flowers.

PACK SIZES: Powder: 1 kg



MICRONUTRIENTS (Trace elements) These are required by plants in relatively small quantities (kg/ha)

BORON - B

It's a Fact - Boron is Required by Plants

Boron is essential for proper flower formation, pollination and fruit set. It regulates carbohydrate transportation and water management while promoting uniform maturity, quality and shelf-life.

DEFICIENCY SYMPTOMS: Boron deficiency results in death of terminal buds, flower abortion, reduced fruit set and poor fruit shape, size and quality.

REMEDY: MICROFOOD[®] range, EASYGRO[®] range, AGROFEED[®]



Roses Cotton - Orange (Inset)

ZINC - Zn

It's the Law - Zinc is Required by Plants

Zinc is essential for hormone and enzyme production, protein synthesis, shoot development, seed and grain formation, as well as fruit ripening.

DEFICIENCY SYMPTOMS: Symptoms of Zinc deficiency include interveinal chlorosis (yellowing), sickle-shaped leaves, reduced internodal length, reduced weight and poor flowering and fruit-set.

REMEDY: MICROFOOD[®], EASYGRO[®] range, AGROFEED[®] HiZinc[®]



Maize

IRON - Fe

It's not Surprising - Iron is Required by Plants

Iron is essential for chlorophyll formation, respiration, protein synthesis & cell division/growth.

DEFICIENCY SYMPTOMS: Iron deficiency symptoms include uniform yellowing of younger leaves (almost to white), die-back and thin, stunted growth. Fine veins generally remain green for some time, giving a net-like pattern. Fruit size may also be reduced.

REMEDY: MICROFOOD[®] range (A formulation containing 7.6% Iron among other micro-nutrients which provides necessary levels of nutrition to the crop. It is quickly absorbed through the leaves. It is also fortified with all essential amino acids and iodine to maintain plant and human health.)



Beans Chrysanthemum

MANGANESE - Mn

It's Mandatory - Manganese is Required by Plants

Manganese is essential for photosynthesis, amino acid & protein formation, respiration, lateral root development, seed development and fruit ripening.

DEFICIENCY SYMPTOMS: Symptoms of Manganese deficiency are grey speck, irregular interveinal mottling of recently matured leaves, followed by reddish-brown necrotic spots. Reduced fruit yield and quality may also result.

REMEDY: MICROFOOD[®] range, EASYGRO[®] range, AGROFEED[®]



Wheat Beans

COPPER - Cu

It's for Certain - Copper is Required by Plants

Copper is essential for cell lignification and photosynthesis; grain, seed & fruit formation, root metabolism, as well as providing natural fungicidal effect. It increases sugar content, intensifies colour and improves fruit flavour.

DEFICIENCY SYMPTOMS: Copper deficiency results in yellowing & curling of younger leaves, wilted appearance, distortion and stunting of new growth, as well as reduced grain yield.

REMEDY: EASYGRO[®] range, AGROFEED[®]



Wheat Sunflower

MOLYBDENUM - Mo

It's Understood - Molybdenum is Required by Plants

Molybdenum is essential for Nitrogen fixation, nitrate reduction, enzyme synthesis and electron transport and immunity against plant diseases.

DEFICIENCY SYMPTOMS: Symptoms of Molybdenum deficiency are similar to those of Nitrogen deficiency. They include yellowing and stunting of plants, and papery leaves with burned tips.

REMEDY: EASYGRO[®] range, AGROFEED[®]



Roses Carnation

Easygro[®]

STARTER 18:20:21+TE

Essential for root development and flowering. Also increases the plant length & stem thickness



All crops: 4-6 kg/ ha

PACK SIZES: 120gm, 250gm, 500gm, 1kg, 25kg



Easygro[®]

VEGETATIVE 27:10:16+TE

Prevents yellowing of leaves starting with older leaves & stunted Growth



All crops: 4-6 kg/ ha

PACK SIZES: 120gm, 250gm, 500gm, 1kg, 25kg



Easygro[®]

FLOWER & FRUIT 14:11:33+TE

Help in preventing poor formation and retention of flowers and fruits & Uneven ripening of fruits



All crops: 4-6 kg/ ha

PACK SIZES: 120gm, 250gm, 500gm, 1kg, 25kg



Easygro[®]

CALCIUM 14:0:2+TE

Prevent Loss of fruit quality & wilting of flower stalks



All crops: 4-6 kg/ ha

PACK SIZES: 120gm, 250gm, 500gm, 1kg, 25kg



AGRO FEED[®]

PLUS

12:10:8+TE



Nitrogen deficiency



Phosphorous deficiency



Potassium deficiency



Magnesium deficiency



Zinc deficiency

FEATURES & USES: AGROFEED PLUS[®] is a liquid foliar fertilizer and plant booster, which contains:

: N. P. K 12 : 10 : 8

Plus chelated Trace Elements : Iron, Copper, Manganese Molybdenum, Boron and Zinc.

Plus 2% Magnesium, 4% Sulphur, 2% Calcium, Amino Acids and Growth Hormones.

It is specially formulated for rapid and effective absorption through leaves. AGROFEED PLUS[®] may also be applied through irrigation systems such as drip lines, overhead systems, etc. AGROFEED PLUS[®] is especially suitable for use in intensively growing vegetables, pastures, lawns, cotton and ornamental crops. AGROFEED PLUS[®] induces faster crop recovery from unfavourable climatic conditions and prevents deficiencies in your crops when applied regularly.

APPLICATION RATES:

CROPS : Coffee, potatoes, tomatoes, ornamentals, pineapples, fruit trees, rice, maize.

Rates : 50ml/20liters water (2.5 L/Ha)

CROPS : Wheat & barley

Rates : 100ml/20liters water (2.5 L/Ha)

PACK SIZES: 500 ml, 1 litre, 5 litres, 20 litres



BLACK EARTH

MINIGRANULES 85% WSG

BlackEarth 1200

Concentrated liquid humic acid

FEATURES & USES: BLACK EARTH[®] 80WSG : Water Soluble Soil Amendment and Blend Composition: Humic acid (dry basis): 85% Soluble K (K₂O dry basis): 11%+ Trace Elements >5%, Fe: 1%, Moisture: 13.2%, pH(in 1% soln.): 8-9 **BLACK EARTH[®] 1200 :** 12% Humic Acid **KEY BENEFITS:** Reduces nutrient lock-up and loss through leaching. / Helps stabilize Nitrogen /Increases ability of the soil to hold nutrients and water / Stimulates growth of beneficial fungi especially in soils low in organic matter / Improves the soil structure and circulation of water and air around the plant roots.

APPLICATION RATES:

BLACK EARTH 80WSG (GRANULES):

As a blend with fertilizer: Mix 1-1.5Kg/ 50kg of fertilizer.

Foliar spray: Spray at 50g/20Liters of water.

Drip Application: 2.0-2.5kg/Ha.

Transplanting: Soak roots in 300g solution.

BLACK EARTH 1200 (LIQUID):

Tomatoes, pepper, melon, cucumber, soft fruit, beans & brassicas, maize, grapes, roses, carnations, summer flowers.

Rates: 3-5L/Ha

Lettuce **Rates:** 2.6-5.3L/ha

Citrus (oranges, lemon) **Rates:** 3-5L/ha

PACK SIZES: POWDER: 500 gm, 1 kg, 5 kg, 25 kg

LIQUID : 100ml, 500ml, 1 Litre



BRIMSTONE[®] 90

90% SULPHUR

PELLETS

FEATURES & USES: Provides additional sulphur, helps plant to fight against fungal, diseases improves the pH of the soil. Thereby promoting other nutrient uptake.

BENEFITS: High nutrient efficiency: It helps to improve color, sugar content of fruits such as apple, pear, peach, grape, sweet persimmon, chesnut, orange, plum ● It helps to increase sulphur content amino acid in garlic, onion, ginger, etc. through which flavor and quality of agricultural product will be much better. ● It helps to increase sugar, vitamin C content in leafy vegetables such as radish, cabbage as well as crop yields ● In case of potato, it helps to increase crop yields, starch value, reduced sugar, through which high quality of crop can be guaranteed. ● It boosts crop absorb high amount of P, K Ca, B, Fe, Mg, Zn, etc (90% of sulphur content may reduce costs and labor due to less amount of fertiliser).



CROPS & APPLICATION:

CROPS:

Cereals (maize, wheat, Barley, sorghum etc.) : 20kg/ha (8.0kg/acre)
 Brassica crops : 45-50kg/ha (18-20kg/acre)
 Legumes (beans, peas etc.) : 20kg/ha (8.0kg/acre)
 Tubers (potato, cassava etc.) : 50kg/ha (20kg/acre)
 Tomato, onions, coffee, sugarcane, pineapple : 20kg/ha (8.0kg/acre)
 Oilseed, fodders, cotton : 45-50kg/ha (18-20kg/acre)
 Tea (hutsites) for pH correction (consult local agronomist) : 1000-1500kg/ha

RATES:

PACK SIZES: 1 kg



CRYSTAL EARTH[®]

Humate in crystal form 90%

FEATURES & USES: CRYSTAL EARTH[®] 90 WSC is 100% water soluble humate in crystal form. It is available in a concentration of 90% and can be used on flowers, landscaping and gardening, for agricultural and horticultural use as well as in field crops. It can be used in drip irrigation, sprinkler and pivot systems targeting the soil surface.

BENEFITS: Addition of organic matter to organically deficient soils • Increase root vitality • Improved nutrient uptake • Increased chlorophyll synthesis • Better seed germination • Increased fertilizer retention • Stimulate beneficial microbial activity • Healthier plants and improved yields

CROPS & APPLICATION RATES:

Greenhouses (flowers, vegetables etc.), plastic tunnels, open field (Vegetables, potatoes, beans etc.), fruit trees (apples, citrus, bananas, mangoes, passion fruit etc.) **Rates:** 0.6 - 1.2kg

Root Dipping

Rates: 30g/20L of water per root dipping solution

PACK SIZES: 1 kg, 25kg



HiZinc[®] 70

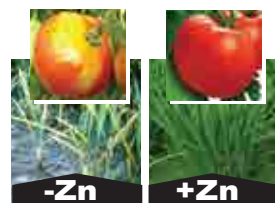
ZINC DEFICIENCY CORRECTOR / FORTIFIED WITH PHOSPHORUS

GENERAL INFORMATION: Hi ZINC[®] 70 is for correction of zinc deficiency and maintenance of growth in Rice, coffee, cereals and horticultural crops.

Economic benefits when Hi ZINC[®] 70 is applied to deficient plants: Better root development • Increased leaf size • Increased grain formation • More uniform maturity • Increased yields • Improved fruit quality • Important for metabolism system • It controls the hormones of the plant • It helps in the development of seed and the growth of the plant • Activates plant enzymes.

CROPS & APPLICATION: All crops: 20-30 ml/20liters of water

PACK SIZES: 1 Litre



IGNITE[®]

Compost Starter Powder

FEATURES & USES: IGNITE[®] is a formulation containing bacteria, fungi, and cellulose digesting enzymes. It is used to activate and accelerate composting of manure and other farm residues giving high quality compost in a shorter time.

MODE OF ACTION: Microorganisms present in IGNITE[®] produce enzymes that are extracellular and secreted outside the microbial cells. They transform molecules of organic matter into less complex chemicals and energy.

FEATURES AND BENEFITS:

- Considerably reduces the time it takes for organic wastes to compost.
- Contains extra cellular enzyme and protein
- complexes that degrade organic compounds outside cells of the microbes.
- Stabilizes the compost aggregates through excretion of organic compounds that bind adjacent organic matter and soil particles together.
- Facilitates nutrient recycling and mineralization.
- Breaks down contaminants into less hazardous components.
- IGNITE[®] is ecofriendly and non-toxic to beneficial organisms and users.

CROPS & APPLICATION:

1-1.2kg/ 3 tons of farm waste

PACK SIZES: 1 kg



NEUSOIL®

Neem, Castor, and Pungam – 100% Natural - PELLETS

FEATURES & USES: A combination of natural, botanical extracts from neem, castor and pungam that contains plant growth stimulating factors, primary auxins, improving the soil texture, promoting unparalleled vegetative growth, strengthening the roots plant health and fruits yields. Prevents and treats ailment disorders of plants due to imbalance of nutrition and trace elements.

BENEFITS: NEUSOIL® favours the development of microbial life, increases productivity and soil fertility. Natural 100% biodegradable blend of neem, castor and pungam cakes, have macro and micro nutrients to nourish the soil naturally. Increases water retention capacity. It makes nitrogen available to the plants for a longer duration by slow conversion of nitrogenous compounds. It is also friendly to beneficial to soil microbes.

APPLICATION RATES: NEUSOIL® is applied in areas around the roots of the plants. It can be applied just like any other organic manure. It can be mixed with the soil nearer the root zone.

Dosage: For field & plantation crops 750-1000kg/ha
Vegetables: 500kg/ha tonnes.

PACK SIZE: 20KG



OSHOZYME®

Bio-organic Stimulant Sea Weed Extract

FEATURES & USES: OSHOZYME® LIQUID is a unique Biofertilizer produced from seaweed (*Ascophyllum nodosum*) through a special fermentation process. It is a non-toxic organic storehouse of naturally occurring plant growth nutrients and stimulants including:

- * **Cytokinins** – for synthesis of enzymes and proteins, thus inducing root growth, cell development and elongation.
- * **Auxins** – for increased chlorophyll content and enhanced photosynthesis.
- * **Enzymes and hydrolysed proteins** - Improve nutrients uptake, soil microbial activity, thus inducing faster and vigorous root development.
- * **Betaines** – reduce intensity of oxidation reactions resulting from disease and harsh weather thus reducing plant stress.

APPLICATION RATES:

CROPS: Vegetables, flowers, plantation crops, cereals, tuber crops, oil crops and fruit trees.

RATES: 10ml/20L of water (500ml/ ha (in 1000L of water)

PACK SIZES: 100 ml, 200ml, 500ml, 1litre



OSHOZYME granules

Bio-organic Stimulant Sea Weed Extract

OSHOZYME® GRANULAR is a unique granular Bio-organic stimulant for maximum yield and better quality crop used from nursery to top dressing as well as planting pits.

KEY BENEFITS OF OSHOZYME® GRANULAR APPLICATION INCLUDE:

- It ensures the plant can benefit fully following a fertilizer application
- It improves tillering and rooting without giving excessive weak leaf growth
- Slow release of nutrients
- Improved plant defense
- Reduced plant stress
- Greater chlorophyll production
- Improved root growth and development
- Effects localized acquired resistance to some disease pathogens
- It is non-toxic in nature

APPLICATION RATES:

CROPS: Cotton, Sugarcane, Rice, Tea, Coffee, VEGETABLES:- Potatoes, Onions, Carrots, FRUITS: Mango, Citrus, Apple, Plums / Peaches

Rates: 2.5 kg/ 50 kg of fertilizer or 8 - 10 kg /ha

PACK SIZES: 2.5 kg, 10 kg



POTPHOS®

0-50-30 (Buffered Phosphorous Acid)

FEATURES & USES: POTPHOS® is a specially formulated foliar fertiliser with a high mobile Phosphorous content. The source is such that it triggers the formation of toxins by the plant that fight off a variety of fungi.

This builds up an intrinsic immune system against:-

- (a) *Phytophthora spp.* – Late blight in tomatoes and potatoes, (b) *Pythium spp.* – Damping off on tomatoes and onions; fruit rot and cottony growth on fruits (c) *Plasmopora spp.* – Downy mildew on grapes (d) *Peronospora spp.* – Downy mildew on berries
POTPHOS® has a high Phosphorous and Potassium content thus making the product extremely useful in various crop growth stages.

CROPS & APPLICATION RATES:

TARGET: Nursery, Transplanting & Growing Stage

Rates: 30ml /20L of water

CROPS: Tomatoes, Coffee, Potatoes, Vegetables, Ornamentals e.g. roses, carnations and summer flowers, Pineapples.

Rates: 25-30ml/20L of water.

PACK SIZES: 100 ml, 1 litre, 20 litres



SYMBION® Vam Plus

(*Bacillus megaterium* and *Glomus fasciculatum*)

FEATURES & USES: Carrier based vesicular arbuscular mycorrhizal product containing the spores and fragments of mycorrhizal fungus & VAM infected root bits. The inoculant consists of bacteria and fungi for solubilisation and mobilization of Phosphorous and other plant nutrients.

MODE OF ACTION: The bacteria solubilise the unavailable Phosphorous in the soil while the fungus through the extensive network of hyphae helps the P to move into the plants. Extensive network of roots increase the root zone hence increasing water and nutrient uptake.

BENEFITS: Solubilises and mobilizes the fixed phosphorus in the soil and makes it available to the plants. Carries the water soluble phosphate into the cortex of the roots through its endophytic nature. Performs all the functions of the root hairs in absence of poor root hair development and facilitates absorption of water and mineral nutrients by the plant root system.

APPLICATION RATES:

CROP: All crops.

Rates: 10kg/ha applied together with organic fertilizer (manure).

PACK SIZES: 1kg



COCOPEAT

100% Natural Growing Medium



Raw cocopeat in block

Ingredients: Coco Husk

General Description:

Cocopeat is a natural and renewable resource produced from coconut husks. It is completely homogeneous material composed of millions of capillary micro-sponges, which helps to absorb and holds water in soil. It improves the structure of the soil facilitating good air movement and drainage, enabling roots to breathe. The high organic content also encourages the activity of beneficial soil dwelling organisms, making your soil a healthy place for your plants to grow.

Advantages of Soil Conditioner - Cocopeat:

- 100% natural with no harmful chemicals added
- High water holding ability, which means less frequent watering
- Suitable for vegetable and flower plants
- High water holding and high air fill porosity
- Ability to hold and release nutrients in solution over extended periods without rewatering
- Improvement of the structure of the soil facilitating good air movement and drainage
- Encouraging the activity of beneficial soil dwelling organisms
- Odourless
- Moss Peat Free, Reusable over years
- Less Water Consumption Great Water Retention
- Incredible Cation Exchange Protective Anti-Fungal Properties
- The lowest EC levels available
- Unmatchable Reconstitution volumes
- Faster Growth
- Perfect Air to Water Ratio
- Increased Yield
- Decreased Storage Space
- Drainage and Dripper Holes to suit your setup and irrigation equipment
- Optimum PH for an easy start
- Strong, Natural Rooting Hormones
- The Highest Quality Growth

Packaging Size: 5 kg



Improve the planting media for plants to grow



jacto

COMFORT & STRENGTH

Light weight | Ergonomic knapsack
Heavy duty | Durable
Easy to maintain, no tools required

Crop, Animals health and Environment protection



Now Available from
OSHO CHEMICAL PROTECTION SUIT
Durability, comfortable and offers protection from aqueous chemicals & jet liquid spray

JACTO PJB - 16/20 BATTERY KNAPSACK SPRAYER (RECHARGABLE)

The most advanced knapsack sprayer

Removable battery, soft padded strap and 5 contant pressure levels make the PJB the most desired sprayer in its category



Jacto offers a complete and competitive line of premium manual knapsack sprayers. Available models range from heavy duty and Light duty version. i.e

JACTO HD 400	- 20 LITRES	JACTO XP	- 16 LITRES
JACTO HD 550	- 20 LITRES	JACTO XP	- 20 LITRES
JACTO PJB	- 16 LITRES	JACTO XPM	- 16 LITRES
JACTO PJB	- 20 LITRES		

JACTO XPM16 Internal, Brass Piston knapsack sprayer

The robust and powerful brass piston pump knapsack sprayer with a high volume spray



- Heavy Duty polyethylene tank with 16 litres volume
- Chemical resistant gaskets
- Powerful brass piston pump (piston pressure up to 0.2-0.3Mpa)

SELECTA[®]
Heavy duty
TRIGGER SPRAYER

Suitable for a wide range of uses:

- ▶ Garden spraying
- ▶ Sterilization
- ▶ Pest control
- ▶ Environmental protection
- ▶ Weed & Disease control
- ▶ Household cleaning

FULLY ADJUSTABLE NOZZLE
Adjustable nozzle offers full range of actuation options from stream to fine mist.

HEAVY DUTY TRIGGER VALVE
Lever also rocks back for constant spraying. The trigger has a textured surface to help grip with wet or gloved hands.

PISTON SPRING
Unique internal stainless steel piston, designed to provide better chemical resistance.

BOTTLE LOCK
Turn-screw bottle locks allows bottle to be easily refilled by user.

INTERNAL DIP TUBE WITH FILTER
The dip tubes have a filter to prevent clogging and trigger damage.

ERGONOMICALLY CURVED TANK
Heavy duty, UV resistant and High density chemical resistant plastic tank.

LIQUID MEASUREMENT MARKINGS
Comprehensive measurement marks are moulded into the plastic bottle, and so will not rub or wash off.

FLAT BASE
Sits on the ground without tipping for easy filling and storage.

jacto
PUMP SPARE PARTS
TECHNICAL SUPPORT & AFTER SALES SERVICES NOW AVAILABLE For XP, HD, PJB & XPM



Always read the products label carefully and use the products only as directed