

**RMC**  
Rural Maryland Council



Photos: Elk Neck State Park, Cecil County

## In This Issue

[Upcoming Events](#)

[RMC in the News](#)

[Rural Youth Engagement](#)

[Dairy Financial Risk, Nutrient Management Workshops](#)

[LEAD Maryland Call for Applications & Symposium](#)

[Carroll County Ag Land Preservation](#)

[40th Annual J. Millard Tawes Crab & Clam Bake](#)

[TEDCO Listening Session](#)

[Outreach and Restoration Grant Program - Charles County](#)

[Rural Community Development Initiative Grants](#)

[Small Farm Outreach Bus Tour](#)

[Message from the Chair](#)

[Committee Updates](#)

## *Rural Maryland Council Summer 2016 Newsletter*

Greetings!

We've had an exciting summer at the Rural Maryland Council. We have two grant programs that are currently open for applications. The [Maryland Agricultural Education and Rural Development Assistance Fund \(MAERDAF\)](#) has a deadline of **July 15th**. The [Rural Maryland Prosperity Investment Fund \(RMPIF\)](#) grant program is open until **August 15th**.

Governor Hogan stopped by our booth at the Maryland Municipal League Conference in June, see the picture below.

FREE "Farmland" Screening - Carroll  
County

Webinar: RMPIF Info Session

MD Department of Housing and  
Community Development State  
Revitalization Programs

Call Before You Cut Program

Chesapeake Regional Foodshed Survey

Preservation Summer School Opportunity

Navigating the "Local Food" Marketplace

2016 MRHA Rural Health Conference

Rural Health Information Hub

## Upcoming Events

### MAERDAF Open for Grant Applications

Deadline: July 15, 2016

[Learn more](#)

### RMPIF Open for Grant Applications

Deadline: August 15, 2016

[Learn more](#)

### Managing Risk, Meeting Nutrient Management Requirements' Dairy Meetings - Garrett County Garrett College, McHenry

July 14th, 9:30 am - 2:30 pm

[Learn more](#)

### FREE "Farmland" Screening

Carroll County Public Library -  
Mt. Airy Branch

July 21st, 6:30 pm - 9:00 pm

[Learn more](#)

### Webinar: RMPIF Grant Information Session

July 26th, 10:00 am - 11:30 am

[Learn more](#)

### RMC/RMF Joint Planning and Development Committee Meeting

August 17th, 10:00 am - 12:00 pm

[Learn more](#)

### Maryland Association of Counties Summer Conference

Ocean City, MD

August 17th - August 20th

[Learn more](#)

### Maryland State Fair



RMC Executive Director, Charlotte Davis, and Odette Ramos,  
Community Development Network of Maryland, with  
Governor Larry Hogan

The RMC will be at the Maryland Association of  
Counties Conference in Ocean City on August 17th-  
20th, stop by booth #203 to visit us!

If I can be of any assistance, please contact me at  
[charlotte.davis@maryland.gov](mailto:charlotte.davis@maryland.gov), or 410.841.5774.

Sincerely,  
Charlotte Davis  
Executive Director

## Message from the Chair

I am excited to announce grant applications for the  
Rural Maryland Prosperity Investment Fund (RMPIF)  
are now available.

For Fiscal Year 2017, the RMC is particularly  
interested in proposals that address the following:  
Regional Planning and Development Councils, Rural  
Entrepreneurship Development, Regional  
Infrastructure Projects, and Rural Health Care  
Organizations.

All applications **must be received by Monday,  
August 15, 2016**. Access the guidelines, instructions  
and applications [here](#). If you have any questions about  
the RMPIF Grant, please contact us at  
[rmc.mda@maryland.gov](mailto:rmc.mda@maryland.gov) or at 410.841.5772.

Best wishes,

## RMC In the News

May 9th  
[Maryland Association of Counties](#)

May 13th  
[Carroll County Times](#)

June 6th  
[Associated Press - WTOG](#)

June 6th  
[Delmarva Public Radio](#)

June 21st  
[The Talbot Spy](#)

June 21st  
[The Chestertown Spy](#)

## Rural Youth Engagement Call for Interested Jurisdictions

The Rural Maryland Council is requesting a call for interested jurisdictions to participate in a Youth Engagement Assessment.

Past Youth Engagement Assessments have included the Bridges to Opportunity Youth Assessment Project conducted in Allegany County, MD under the direction of Nancy Forlifer of the Western Maryland Health System. View the [final report of the project](#) and the [Bridges to Opportunity Youth Perspective PowerPoint](#).

If interested, or to obtain more information, please contact Charlotte Davis at 410.841.5774 or [charlotte.davis@maryland.gov](mailto:charlotte.davis@maryland.gov).

## Dairy Financial Risk, Nutrient Management Workshops Set for July in Cecil, Washington,

## Committee Updates

### RMC Health Care Committee:

The Health Care Committee recently had several guest speakers attend its June 7th meeting including Dr. David Pruitt, Dr. Nicole Wolf, and Ms. Kelly Coble LCSW-C from the University of Maryland, School of Medicine to discuss the Maryland Behavioral Health Integration in Pediatric Primary Care program. In addition, the Committee has distributed letters to Local Health Improvement Coalitions (LHICs), Rural School Superintendents, 132 rural-serving Pediatricians, and 240 rural-serving Family Physicians in Maryland regarding the Healthy Kids/Early Periodic Screening Diagnosis and Treatment (EPSDT) Program.

Learn more about the RMC Health Care Committee on our website [here](#), or contact Chairman [Tom McLoughlin](#).

### RMC Legislative Committee:

The RMC Legislative Committee met July 7th to discuss potential legislation for the 2017 Legislative Session, including a look at the Earned Income Tax Credit (EITC), renewable energy, and rural manufacturing and economic development.

To learn more about the RMC Legislative Committee, please contact Chairman [Josh Hastings](#).

### RMC/RMF Joint Planning and Development Committee:

The RMC Committee held a Board Retreat April 27th-28th to meet with a strategic planning consultant to work on a strategic plan. The Committee met May 18th to discuss and review the finalized RMC Strategic Plan. The goals for the RMC outlined in the plan include:

- Goal #1: Encourage healthy, connected communities throughout Rural Maryland
- Goal #2: Support the development and growth of vibrant economies
- Goal #3: Foster stewardship of Maryland's natural resources
- Goal #4: Maximize RMC outreach, resources and mission

To learn more about the Committee, please contact



Maryland Department of Agriculture and its partners at the University of Maryland Cooperative Extension will hold three workshops in July to provide dairy farmers with financial risk management information and updates on manure management requirements beginning this winter.

Presenters from the University of Maryland, Penn State University, Maryland Department of Agriculture, U.S. Department of Agriculture, Farm Credit, Maryland Agricultural and Resource-Based Industry Development Corp. and others are designed to provide critical information.

The meetings will be held from 9:30 a.m. until 2:30 p.m., and lunch is included. The workshops will be held at the following locations:

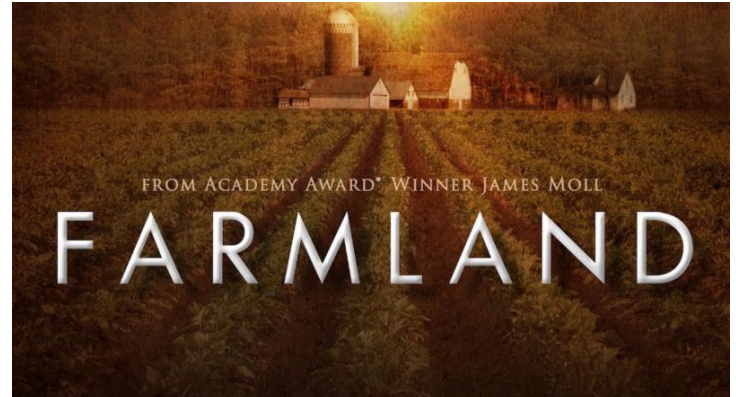
- **July 14 - Garrett College**, Room 201, Continuing Education Building, 687 Mosser Road, McHenry (Registration: 301-405-1293).

For more information, call Mark Powell, Maryland Department of Agriculture, at 410-841-5775 or Paul Goeringer, University of Maryland, at 301-405-3541.

### **LEAD Maryland: Call for Applications & Symposium**

Join LEAD Maryland Class IX for the third biennial [Image of Agriculture Symposium](#):

### **FREE "Farmland" Screening at Carroll County Public Library - Mt. Airy**



Join the Rural Maryland Council, Rural Maryland Foundation, [Mt. Airy Main Street Farmers Market](#), and [Carroll County Public Library - Mt. Airy Branch](#) for a screening of "Farmland" the movie and the short video "Rural Aspirations" on **Thursday, July 21st**, 6:30pm-9:00pm at the Carroll County Public Library - Mt. Airy Branch.

"Farmland", a documentary, takes an intimate look at the lives of farmers and ranchers and their passion for a way of life that has been passed down from generation to generation, yet continues to evolve.

The screening is **FREE** and open to all! Light refreshments will be provided. [Learn more & register...](#)

### **Webinar: RMPiF Information Session**

Join a **FREE** webinar to learn more about the Rural Maryland Prosperity Investment Fund (RMPiF) Grant on **Tuesday, July 26th at 10am**. Join to learn about eligibility, grant requirements, and more. [Register Here!](#)

If you missed the MAERDAF Grant Information Session webinar on Tuesday, June 21st, you can access the recording and slides on our website [here](#).

### **Maryland Department of Housing and Community Development State Revitalization Programs**

The Department of Housing and Community Development has opened the FY17 application round

[The Many Faces of Maryland Agriculture](#) on **Saturday, November 19, 2016** at the College Park Marriott Hotel & Conference Center in College Park, MD.

The Conference will include a focus on four tracks, including politics of agriculture and the environment, trends in agricultural production, emerging markets and career opportunities, and Maryland's agricultural communities.

**Are you interested in joining the next LEAD class?** The LEAD Maryland Fellowship Program is **accepting applications until October 1, 2016**. Learn more and apply [here](#).

## Carroll County Agricultural Land Preservation Program Open for Applications

The Carroll County Agricultural Land Preservation Program recently opened a new application cycle for interested applicants to **apply by August 5, 2016**.

The program, which began in 1980, enables farmland owners to retire the development potential of their land and invest in their farm operations, thereby preserving land for agricultural use in perpetuity. The county's goal is to preserve 100,000 acres.

For more information, contact Deborah Bowers, Program Manager, at 410.386.2214. [Learn more...](#)

## 40th Annual J. Millard Tawes Crab & Clam Bake

Held the third Wednesday in July each year, the Crab & Clam Bake draws a large crowd and features all-you-can-eat delicious local seafood and entertainment.

Join the Bake on **July 20th**, Noon - 4pm, at the Somers Cove Marina in Crisfield, MD. [Learn more...](#)

for three of the four available State Revitalization Programs.

These programs, which include Community Legacy, Strategic Demolition Fund - Statewide (all non-Baltimore City) and Baltimore Regional Neighborhood Initiative, offer funding to support local housing, community and economic development and revitalization projects. They are part of the department's commitment to helping the state's local governments and nonprofit agencies achieve their community revitalization and economic development goals.

**Applications are due July 15, 2016.** The FY17 application due date for a fourth program, Strategic Demolition Fund - Project C.O.R.E., will be announced shortly. [Learn more...](#)

## Call Before You Cut Program

The Call Before You Cut Program helps woodland property owners achieve their management goals and help ensure the health of their forests for the coming years and future generations.

Whatever the reason for harvesting, a professional forester is uniquely qualified to assist you with a timber harvest that accomplishes your needs and expectations. To request information or to learn more, visit the Maryland page of the program [here](#).

## Chesapeake Regional Foodshed Survey

The Harry R. Hughes Center for Agro-Ecology, the Town Creek Foundation, and the Chesapeake Foodshed Network are gathering information and understanding to better support a thriving regional farm-to-table food system in the Chesapeake Region.

Is it easy or difficult for farmers in your town, county or state to produce, add value to, market, or sell local food products to local consumers ?

Do federal, state and local regulations or policies for producing, processing, marketing, and selling local food products help or hinder market access in your community?

ARE YOU INVOLVED in farming or food industries in some capacity? DO THESE ISSUES CONCERN YOU?

If so, PLEASE share your knowledge and insights on these matters! [Contribute to the survey here](#).

## TEDCO Listening Session

The Maryland Technology Development Corporation (TEDCO) is Maryland's go-to source for entrepreneurial support, investment and guidance for seed and early-stage tech companies engaged in bringing innovative ideas to market. TEDCO provides this support through its suite of funding and mentoring services throughout Maryland. One of these programs is the Rural Business Innovation (RBI) Initiative, which matches business mentors with tech entrepreneurs in the rural parts of the State.

TEDCO is currently re-evaluating all of its programs/services to customers in Maryland and is interested in learning directly from businesses on how better to serve them. To that end, TEDCO will be hosting, in conjunction with the Tri-County Council for the Lower Eastern Shore of Maryland and the Economic Development offices in Somerset, Wicomico and Worcester counties, a breakfast forum on **Wednesday, July 13th** to:

1. Give a brief overview of its current programs; and,
2. Seek input on how best to assist the development of tech entrepreneurs in the rural parts on Maryland.

The meeting will begin at 8:00am with continental breakfast, registration and networking, with the presentation/listening session to start at 8:30am. The meeting will be held at Headquarters Live located at 115 S Division St, Salisbury. [Learn more...](#)

## Outreach and Restoration Grant Program - Charles County

Charles County Government, in partnership with the Chesapeake Bay Trust, is pleased to announce the Outreach and Restoration Grant Program is now open for applicants.

This grant program encourages outreach and community engagement activities to increase stewardship ethic of natural resources and on-the-ground activities

For questions, or to learn more information, contact Joe Tassone, Maryland Department of Planning, at 410.767.4547 or [joe.tassone@maryland.gov](mailto:joe.tassone@maryland.gov).

## Preservation Summer School Opportunity



Preservation Maryland's Preservation Summer School is a one-day professional development opportunity hosted with collegiate and professional partners each year in a different location within Maryland. Preservation Summer School explores diverse and relevant topics, and this year is introducing a basic and advanced track, while focusing on the technology, ethics, and issues facing the future of historic preservation.

Whether you are a historic preservation staff member or volunteer, a heritage area or main street manager or a community planner or government employee, you will leave energized and ready to put the lesson you learned to work in your community. Students welcome.

The one-day conference for preservationists will take place in Frederick, MD on **Thursday, July 21st**, 9am - 4pm. [Learn more...](#)

## Navigating the "Local Food" Marketplace - Panel & Discussion

Interested in having your farm raised products sold in the booming "local food" marketplace? Join a reception and panel and discussion hosted by the Maryland Agricultural Law Initiative and Maryland Farm Bureau on **Wednesday, July 27th**, 5pm - 8pm, at Chesapeake College in Wye Mills.

Come and listen to a dynamic panel discussion on the challenges and successes of buying and selling locally sourced foods in Maryland. The evening will start with a light reception of locally sourced foods and drinks to allow for networking of buyers and sellers, followed by a panel discussion. [Register & Learn More...](#)

demonstrating restoration techniques and engaging residents in the restoration and protection of the Chesapeake Bay and its rivers.

Non-profit organizations, community associations, and faith-based organizations are encouraged to apply. **Applications are due September 28th** by 5pm.

[Learn more...](#)

## Rural Community Development Initiative Grants

This program, available through USDA Rural Development, provides funding to help non-profit housing and community development organizations support housing, community facilities, and community and economic development projects in rural areas.

Funds may be used to improve housing, community facilities, and community and economic development projects in rural areas. Public bodies, nonprofit organizations, and Federally recognized tribes are eligible to apply. **Applications are due July 22nd.** [Learn more...](#)

## Small Farm Outreach Initiative Bus Tour

Although farmers face many challenges today, there still re-main alternative ways and strategies to increase farm profits. Selected tour stops will offer diverse and practical examples of what farmers can do to improve their bottom line.

University of Maryland, Eastern Shore is offering an educational tour to provide farmers with the opportunity to learn from successful agricultural entrepreneurs. Major focuses include: direct marketing, value-added, agri-tourism, specialty "niche" crops, sustainable farming practices, woodland opportunities, natural resource conservation and more!

The bus will depart from the Comfort Inn

## 2016 Maryland Rural Health Conference



**Early Bird special prices end July 31st** for the Maryland Rural Health Association 2016 Conference "Creating a Culture of Health in Rural Maryland", October 6th-7th, at the Holiday Inn Solomons Conference Center and Marina.

MRHA Members can attend the conference at a discount of \$220; non-MRHA Mmembers can attend for \$250. [Register here.](#)

Learn more about Exhibit and Sponsorship opportunities [here.](#)

Help recognize someone or some deserving organization in your rural community by nominating them for a 2016 Maryland Rural Health Award. Awards will be presented at the upcoming 2016 Maryland Rural Health Conference in Solomons, MD during the evening Awards Ceremony on October 6th.

MRHA is now accepting nominations for the following awards:

- Outstanding Rural Health Program
- Outstanding Rural Health Achievement
- Outstanding Rural Health Practitioner
- Outstanding Rural Health Volunteer (up to 2 awards)

For descriptions of each of these awards and information on nominating individuals and organizations, please [click here.](#)

For more information about MRHA, please contact Lara Wilson, Executive Director, at 410.693.6988 or [larawilson@mdruralhealth.org](mailto:larawilson@mdruralhealth.org).

## Rural Health Information Hub - Seeking New Topics

The Rural Health Information Hub (RHIHub) is currently seeking new topics to add and is asking for ideas for challenges and/or possible solutions to be

Hotel parking lot at 4500 Crain Hwy, Bowie, MD 20716 on Monday, August 8, 2016 at 8:00am and return at approx. 6:30pm on Tuesday, Aug 9th.

For participants who reside on the Eastern Shore, provisions are being made for pick-up enroute to Bowie at the Cambridge Walmart Supercenter parking lot on Monday, August 8, 2016 at 6:30am promptly.

**Registration deadline is August 3rd.**

[Learn more...](#)

sent to this [address](#) by **July 31, 2016**.

RHIHub allows rural health practitioners to research approaches to community health programs, discover best practices, learn about common obstacles, connect with program experts, and evaluate programs to demonstrate impact.

RHIHub has a variety of online tools, data, and publications to provide current rural health news, funding opportunities, research, and more.

[Learn more...](#)

Rural Maryland Council is an independent state agency and Maryland's federally designated State Rural Development Council under the United States Department of Agriculture's National Rural Development Partnership. Our mission is to bring together federal, state, county, and municipal government officials as well as representatives of the for-profit and nonprofit sectors to identify challenges unique to rural communities and to develop and implement policy solutions. As a collaborative partnership, the RMC operates under the guidance of a 40-member Executive Board, in a nonpartisan and non-discriminatory manner.

[WWW.RURAL.MARYLAND.GOV](http://WWW.RURAL.MARYLAND.GOV)

Copyright © 2016. All Rights Reserved.