

Summer school in Glaciology, McCarthy 5-15 June 2018

Regine Hock

Geophysical Institute, University of Alaska, Fairbanks

Glacier Mass Balance

This summary follows the terminology proposed by Cogley et al. (2011)

1. Introduction: Definitions and processes

Definition:

Mass balance is the change in the mass of a glacier, or part of the glacier, over a stated span of time:

$$\Delta M = \int_{t_1}^t \dot{M} dt$$

The term **mass budget** is a synonym. The span of time is often a year or a season. A **seasonal mass balance** is nearly always either a *winter balance* or a *summer balance*, although other kinds of seasons are appropriate in some climates, such as those of the tropics. The definition of “**year**” depends on the measurement method (see Chap. 4).

The **mass balance**, b , is the sum of **accumulation**, c , and **ablation**, a (the ablation is defined here as negative). The symbol, b (for point balances) and B (for glacier-wide balances) has traditionally been used in studies of surface mass balance of valley glaciers.

$$b = c + a = \int_{t_1}^t (\dot{c} + \dot{a}) dt$$

Mass balance is often treated as a rate, b dot or B dot.

Accumulation

Definition:

1. All processes that add to the mass of the *glacier*.
2. The mass gained by the operation of any of the processes of sense 1, expressed as a positive number.

Components:

- **Snow fall** (usually the most important).
- **Deposition of hoar** (a layer of ice crystals, usually cup-shaped and faceted, formed by vapour transfer (sublimation followed by deposition) within dry snow beneath the snow surface), **freezing rain**, **solid precipitation** in forms other than snow (re-sublimation composes 5-10% of the accumulation on Ross Ice Shelf, Antarctica).
- **Gain of windborne blowing snow and drifting snow** (can be important for the survival of, for example, small cirque glaciers).
- **Avalanching** (→ can generate glaciers below the "climatic" boundary for glacier formation).
- **Basal freeze-on** (usually beneath floating ice)
- **Internal accumulation** (see Chap. 7).

Note: Unless it freezes, rainfall does not constitute accumulation, and nor does the addition of debris by avalanching, ashfall or similar processes.

Ablation

Definition:

1. All processes that reduce the mass of the glacier.
2. The mass lost by the operation of any of the processes of sense 1, expressed as a negative number.

Note: Ablation is a **mass loss** and therefore typically considered as a **negative number**.

Main components:

- **Surface melting** (usually the most important on land-terminating glaciers. Melt water that re-freezes onto another part of the glacier is not referred to as ablation).
- **Frontal ablation** A_f at marine- or lake-terminating glacier fronts (or, when the glacier nourishes an ice shelf, ice discharge across the grounding line): A_f consists of **calving** (mechanical detachment of icebergs) and **subaqueous melt**;
 - A_f is important, for example, in Greenland and Antarctica, where approximately 50% and 90%, respectively, of all ablation occurs via A_f ; also important in Svalbard and Alaska, Arctic Canada and Russia.
 - Note that there is mounting evidence that subaqueous melt plays a much larger role in frontal ablation than previously assumed, when frontal ablation was typically considered equal to calving.
- **Loss of windborne blowing snow and drifting snow**
- **Avalanching**
- **Sublimation** (important, for example, at high altitudes in low latitudes (tropical glaciers), in dry climates, and on blue-ice zones in Antarctica; is a function of vapour pressure).

Note the difference between:

- a) **Precipitation** (includes solid precipitation and rain) and **surface accumulation** (does not include rain, but also windblown snow). Note, that in contrast to what is natural in dynamic glaciology and glacial geomorphology, for mass-balance purposes the glacier consists only of frozen water. Sediment carried by the glacier is deemed to be outside the glacier for mass-balance purposes. Meltwater in transit or in storage, for example in supraglacial lakes or subglacial cavities, is also regarded as being outside the glacier.
- b) **Accumulation** and **Net accumulation** (the latter is a balance, i.e. accumulation plus ablation over a period of time. It is identical to the (net) mass balance in case the balance is positive. Net accumulation equals zero in case the balance is negative).
- c) **Meltwater** (the liquid resulting from melting of ice/snow) and **Meltwater runoff** (A portion of melt may refreeze; meltwater runoff refers to the meltwater that does not refreeze and that is removed from the glacier in surface, englacial or subglacial flows).
- d) **Meltwater runoff** and **Runoff** (the latter includes rain or any other source of water other than meltwater).

Climatic mass balance versus surface mass balance

Traditionally, *surface mass balance* is the sum of accumulation and ablation at the surface of the glacier. However an ambiguity arises because in some recent studies, especially in the ice-sheet context, its meaning has been extended to include *internal accumulation*. Therefore Cogley et al., (2011) recommends that the sum of the *surface mass balance* and the *internal mass balance* be called the *climatic mass balance*, a term that preserves the distinction between its two components and captures the strong dependence of both on interactions between the glacier, the hydrosphere and the atmosphere. The *climatic-basal mass balance* also includes the balance at the bottom of the glacier.

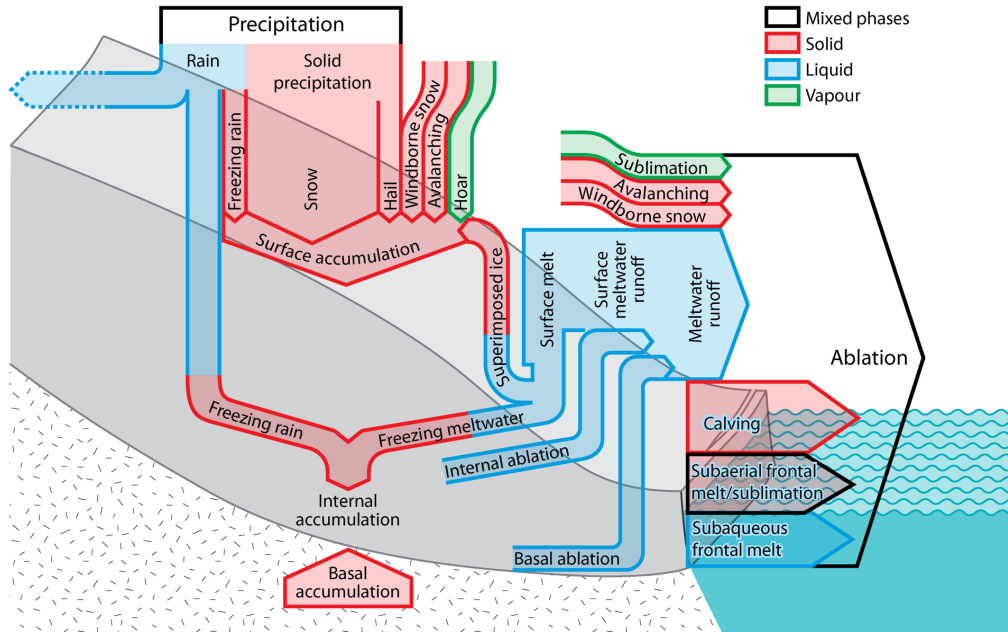


Figure 1. Components of the mass balance of a glacier. The arrows have arbitrary widths and do not indicate physical pathways of mass transfer (Cogley et al., 2011).

2. Annual mass balance

Annual mass balance (b_a) is the mass balance at the end of a **balance year**. It can also be described as the sum of the **winter balance** (b_w) and **summer balance** (b_s), which usually is negative.

$$b_a = b_w + b_s = c_t + a_t = c_w + a_w + a_s + a_s$$

The annual balance B_a of the entire glacier with area A is given by

$$B_a = \int b_a dA$$

Annual mass balances are often shown in **specific units** (per area) as shown in Figure 2.

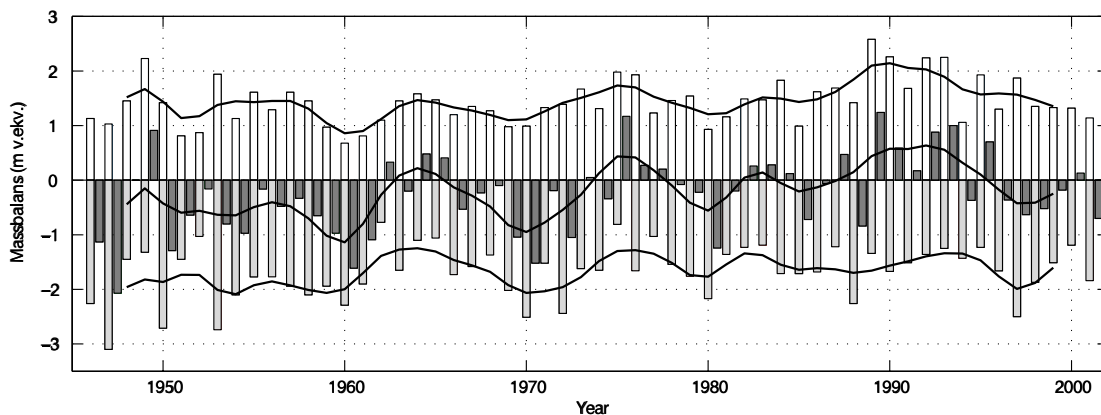


Figure 2. Winter- (white), summer- (grey), and annual mass balance (black) for Storglaciären, Sweden, 1946 - 2002. The black lines show the running 5-year average.

3. Seasonal variations in mass balance

Accumulation and ablation are usually seasonally governed, and so the mass balance undergoes an annual cycle of growth (positive mass balance) and diminishment (negative mass balance). At mid-latitudes, there are distinctly different accumulation and ablation seasons, i.e. it snows mainly during the winter and melts during the summer (Figure 3). This is different from e.g. tropical regions, where ice melting and accumulation occur at the same time.

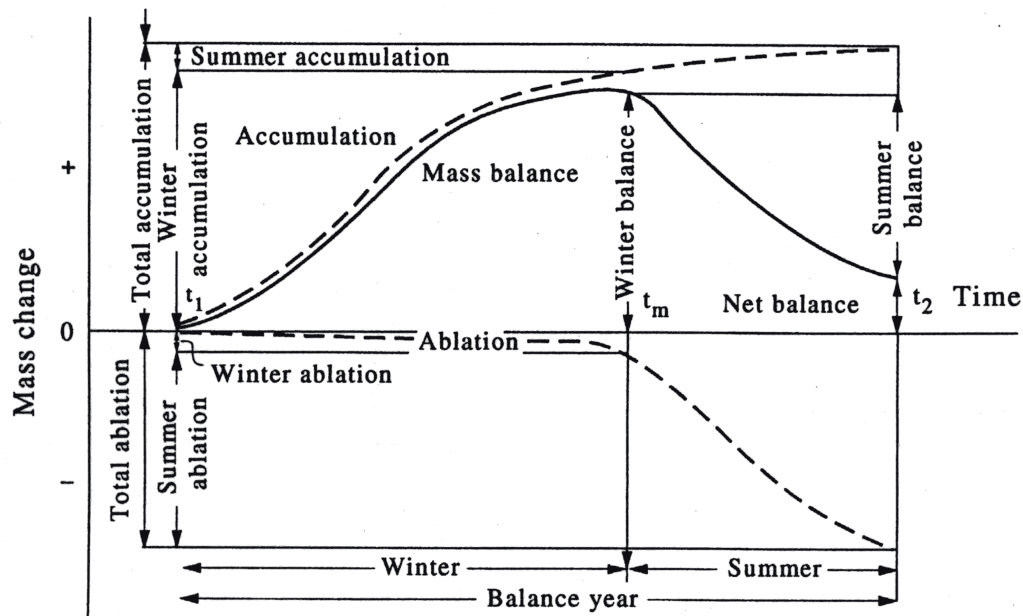


Figure 3. Variation of accumulation, ablation, and mass balance during a glaciological year for a glacier with distinct accumulation and ablation seasons.

4. Time systems

When reporting annual or seasonal mass balances it is essential to provide information about the time system the measurement refers to. This is also important to be able to compare observations with model results. Four time systems have been used:

a) Stratigraphic system

The time system in which the determination of mass balance is based on the **identification of successive annual minima**, and for seasonal balances annual maxima also, in the mass of the glacier or a part of the glacier.

In field work, annual mass balance is determined by the detection of two successive summer surfaces, usually at individual observation sites. In the ablation zone, the earlier summer surface has disappeared by the time the later one is observed, but its vertical position is known from earlier observations. For seasonal balances, it is not possible to determine the annual maximum of mass with a single field survey that can be scheduled to coincide only roughly with the expected date of the maximum. Thus, in the stratigraphic system, seasonal balances by the glaciological method are actually measured in a *combined system*.

Continuously recording sensors, such as snow pillows and sonic rangers, can yield accurate stratigraphic-system estimates of seasonal balances at single points, but they are not in wide use. The annual extrema of mass may be reached at different times at different sites on the glacier. Glacier-wide balances in the stratigraphic system can be determined rigorously only by accurate

spatially-distributed modelling or by gravimetric methods (GRACE). Determinations based on field measurements must assume that the diachronous character of the summer surface can be neglected. The duration of the mass-balance year varies in the stratigraphic system.

b) Fixed-date system

The time system in which mass balance is determined by conducting field surveys on **fixed calendar dates**. The fixed date representing the start of the mass-balance year is usually at the start of the local hydrological year. To determine seasonal balances, a fixed date is chosen to represent the mean date of the end of the accumulation season. Due to logistical constraints it is often impossible to conduct field surveys on these exact dates. Therefore the data need to be corrected, which is often done by estimating ablation and accumulation between the survey date and the fixed date using meteorological data from a nearby weather station or a database of upper-air measurements.

c) Floating-date system

The mass-balance year is defined by the calendar dates of the two successive surveys, which may vary from year to year and may or may not be 365 (or 366) days apart. Formerly (Anonymous 1969) the term *mass-balance year* was defined only in the stratigraphic system.

d) Combined system

A combination of two time systems of mass-balance measurement, usually of the stratigraphic system with either the fixed-date system or the floating-date system.

Differences between determinations of B_a in the **floating-date, fixed-date and stratigraphic systems** can be substantial exceeding 0.5 m w.e. a^{-1} . Summed over the years, the deviations cancel and the median difference is negligible, but single-year differences of 0.2 m w.e. a^{-1} are typical. Such differences, due solely to differences in time system, are large enough to affect the precision of comparative analyses, and it is essential that the analyst be aware of them, and that the time-system of each measurement is reported.

5. Specific mass balance

Mass balance expressed per unit area, that is, with dimension $[M L^{-2}]$ or $[M L^{-2} T^{-1}]$.

The prefix “specific” is not necessary in general. The units in which a quantity is reported make clear whether or not it is specific. Specific mass balance may be reported for a point on the surface, a column of unit cross section, or a larger volume such as an entire glacier or a collection of glaciers. In the latter two cases the term “mean specific mass balance” has been used, although the adjective “mean” is also not necessary.

The definition of “specific” apparently offered by Meier (1962) has led to some confusion. He wrote:

... quantities measured at a point will first be discussed. [They] should all be prefaced by the word specific Specific budget terms have dimensions of [length] or [length]/[time].

The confusion arises because of the primacy given by Meier to water-equivalent dimensions (“[length]”). The adjective “specific” indicates that the quantity has dimension $[M L^{-2}]$ or $[M L^{-2} T^{-1}]$, not that it is being measured at a point.

The adjective “point”, as in point mass balance, should be used when clarity is needed.

The unit of area lies in the horizontal plane, not a plane parallel to the glacier surface. For mass-balance purposes this rule applies even when the surface is vertical. For example, at a calving front the frontal ablation is equal to the mass of the entire volume lost by calving, melting and

sublimation. If quoted as a specific quantity it is divided by the horizontal area over which the balance is to be stated, such as that of the entire glacier for a glacier-wide mass balance.

The glaciological usage is not that which prevails in some other sciences, where often a specific quantity is either a dimensionless ratio of the value of a property of a given substance to the value of the same property of some reference substance, or is a quantity expressed per unit mass.

6. Mass balance units

The dimension of mass balance is **[M] (mass)**. The dimension of the mass-balance rate is $[M T^{-1}]$ (mass per unit time). When the mass balance is presented per unit area, it is called **specific mass balance and its dimension becomes $[M L^{-2}]$** , while the dimension of the mass-balance rate becomes $[M L^{-2} T^{-1}]$. When water-equivalent units are adopted (see below), the dimension becomes $[L^3]$ or $[L^3 T^{-1}]$, the corresponding specific units being $[L]$ or $[L T^{-1}]$.

The unit for expressing mass or change of mass numerically is the kilogram (kg). When more convenient the petagram (Pg) or gigatonne (Gt; $1 \text{ Gt} = 1 \text{ Pg} = 10^{12} \text{ kg}$) can be substituted. When mass balance is expressed per unit area, its unit is kg m^{-2} .

The unit kg m^{-2} is usually replaced by the **millimetre water equivalent, mm w.e.** This substitution is convenient because 1 kg of liquid water, of density 1000 kg m^{-3} , has a vertical extent of exactly 1 mm when distributed uniformly over a horizontal area of 1 m^2 .

The units kg m^{-2} and **mm w.e. are therefore numerically identical**. More formally, the metre water equivalent (m w.e.) is an extension of the SI that is obtained by dividing a particular mass per unit area by the density of water, ρ_w :

$$1 \text{ m w.e.} = 1000 \text{ kg m}^{-2} / \rho_w$$

Because of the risk of confusion with the metre ice equivalent, or with ordinary lengths, it is important that the qualifier “w.e.” not be omitted.

Mass balances can also be stated in $\text{m}^3 \text{ w.e.}$ ($1 \text{ m}^3 \text{ w.e.} = 1 \text{ m w.e.}$ distributed uniformly over 1 m^2) or $\text{km}^3 \text{ w.e.}$ **Note that $1 \text{ km}^3 \text{ w.e.}$ is numerically identical with 1 Gt .**

For the mass-balance rate, appropriate units are kg a^{-1} or $\text{kg m}^{-2} \text{ a}^{-1}$ (or $\text{m}^3 \text{ w.e. a}^{-1}$ or mm w.e. a^{-1}) when the time span is an integer multiple of 1 year. Over shorter intervals the unit of time should be the second or the day.

Mass units (kg or $\text{m}^3 \text{ w.e.}$) are useful for hydrological and oceanographic purposes, while specific mass units (kg m^{-2} , mm w.e. , m w.e.) are needed when comparing the mass balances of different glaciers and for studying glacier-climate relations.

To convert, with sufficient accuracy for many purposes, to the frequently needed **sea-level equivalent (SLE)**, mass balance in kg m^{-2} is first converted to kg by multiplying by the area of the glacier, and then typically divided by the product of ρ_w and the area of the ocean ($362.5 \times 10^{12} \text{ m}^2$). The sign of SLE is opposite to that of glacier mass balance, a loss from the ice being deemed to be an equivalent gain for the ocean. Note that the actual sea-level change will be different since this calculation does not account for processes like isostatic rebound or shoreline migration.

7. Conventional and reference-surface mass balance

Conventional balance

The mass balance of a glacier, the term having been introduced by Elsberg et al. (2001) to distinguish the mass balance from the *reference-surface balance*, which is the balance the glacier would have if the glacier surface geometry were fixed in time.

Conventional balances are obtained when **point measurements over a particular time interval are extrapolated to the glacier area and hypsometry measured during the same time interval**. Calculations of conventional balance require repeated mapping of glacier hypsometry at intervals appropriate to the rate of change of the surface geometry. However, maps are often re-

calculated at longer time intervals, the reported balances being a combination of conventional and reference-surface balances.

Conventional balances are relevant for **hydrological applications** because they represent the **actual mass change** of a glacier. Conventional balances are not simply correlated to variations in climate because they incorporate both climate forcing and changes in glacier hypsometry. For glacier/climate investigations the reference-surface balance is a more relevant quantity.

Reference-surface balance

The mass balance that would have been observed **if the glacier surface topography had not changed since a reference date**.

The time-invariant surface is called the “reference surface”, and is defined at some convenient time within a mass-balance programme, often at the start (Elsberg et al. 2001). The reference-surface balance is obtained when point measurements are extrapolated to the altitude of the reference surface at the same horizontal position and then extrapolated over the reference area. Note that the reference surface is likely to differ from the actual surface in both area and area-altitude distribution.

Differences in surface area and area-altitude distribution feedback on the magnitude of glacier response to climate. The reference-surface balance does not incorporate any of these feedback effects and is therefore more **closely correlated to variations in climate** than the conventional balance.

8. Superimposed ice and internal accumulation

8.1 Superimposed ice

Ice accumulated on the current summer surface, during the current mass-balance year, by the refreezing there of rain or meltwater. Superimposed ice is not the same thing as internal accumulation, which represents refreezing below the summer surface. Superimposed ice becomes glacier ice at the end of the mass-balance year.

Percolating water through the entire snow pack and refreezing at the ice surface creates **superimposed ice**. Superimposed ice forms primarily on subpolar glaciers and can become several decimetres thick. If part of the superimposed ice survives the summer and is left the melt season, the snow line and equilibrium line no longer correspond at the end of the balance year. In this case, the equilibrium line lies below the snow line.

8.2 Internal accumulation

Re-freezing of percolated water in the firn zone beneath the previous year’s level is known as **internal accumulation**. The process can be a problem for traditional mass balance measurements because changes in density beneath the previous year’s level are not usually recorded in measurements of summer ablation. The true ablation is less than calculated because a part of the ablation water re-freezes lower down, resulting in an under-estimation of the mass balance.

Internal accumulation consists of two components

- a) Refreezing of melt water percolating in cold firn in spring, b_p
- b) Refreezing of water held by capillary forces when the cold wave penetrates in the firn in winter (=irreducible water content), b_c

Internal accumulation may constitute a significant term in the glacier mass balance (e.g. estimates of 7-64% of net accumulation on northern Alaskan glaciers).

The amount is constrained by the cold content of the firn and the irreducible water content. For a given temperature profile maximum b_p is given by

$$b_{p,\max} = \frac{c_{pi}}{L_f} \int_{H_{sf}}^{H_0} \rho \Delta T dz$$

ΔT = temperature difference to melting point at depth z , H_{sf} =depth of snow-firn transition, H_0 is depth of the 0°C isotherm, c_{pi} =heat capacity of ice, L_f =latent heat of fusion ($0.334 \times 10^6 \text{ J kg}^{-1}$). For unlimited water availability the amount is limited by the cold content. For a given density profile, maximum b_c is given by

$$b_{c,\max} = \int_{H_{sf}}^{H_0} \theta_{pi} \left(1 - \frac{\rho}{\rho_i}\right) dz$$

θ_{pi} =irreducible water content.

8.3 Refreezing

Note that ‘refreezing’ is a more general term as it includes both international accumulation and superimposed ice. It is defined as the freezing of meltwater generated at the glacier surface, or of rain, that percolates to some depth at which the temperature is below the freezing point. Refreezing below the summer surface represents *internal accumulation*. Percolating water may also refreeze at the base of snow overlying impermeable glacier ice, in which case it is called superimposed ice. The release of latent heat heats the layer within which the water freezes.

9. Stake measurements vs elevation change measurements

Measuring the **elevation change** at a single point (e.g. with GPS or from DEM differencing) and converting it into a mass change with an adequate density yields the **(total) mass balance at that point**. It includes changes in mass due to any of the mass change components (climatic or dynamic).

In contrast, a **stake** drilled a few meters into the ice and measured at two points in time measures the elevation change during this period relative to the frozen-in stake, i.e. it only measures the **surface mass balance** and not any mass changes of the column at that point due to ice flow. For example, the stake may rise in elevation due to ice inflow (mass gain), but it does not capture this mass change – it moves up or down with the ice flow induced elevation changes, and the stake measurements are only relative to the top (or bottom) of the stake.

However, if extrapolated over an entire (land-terminating) glacier, the flux divergence cancels out and therefore the balance derived from the stake measurements is equal to the total glacier mass balance.

9. Equilibrium, firn, snow line

9.1 Equilibrium line

The set of points on the surface of the glacier where the **climatic mass balance is zero** at a given moment. The equilibrium line separates the accumulation zone from the ablation zone. It coincides with the snowline only if all mass exchange occurs at the surface of the glacier and there is no superimposed ice. Unless qualified by a different adjective, it refers to the **annual equilibrium line**:

The set of points on the glacier surface where annual ablation balances annual accumulation, that is, where the **annual mass balance is zero**.

Transient equilibrium line

The set of points on the glacier surface where, **at any instant**, cumulative ablation balances cumulative accumulation since the start of the mass-balance year.

9.2 Equilibrium-line altitude, ELA

The spatially averaged *altitude* of the *equilibrium line*. The ELA is generally determined, in the context of *mass-balance* measurements, by fitting a curve to data representing *point mass balance* as a function of altitude (see *mass-balance profile*). This is often an idealization, because the equilibrium line tends to span a range of altitudes. The ELA is understood to be the *annual ELA* unless it is qualified as the *transient ELA*.

Balanced-budget ELA

The ELA, sometimes denoted ELA_0 , of a glacier with a climatic mass balance equal to zero on average over a number of years.

The balanced-budget ELA is usually estimated as the altitude at which a curve fitted to an observed relation between annual ELA and mass balance B crosses the axis $B = 0$. The uncertainty in such estimates can be substantial, especially when mass-balance sampling is sparse or the equilibrium zone occupies a large fraction of the glacier surface.

The balanced-budget ELA may differ from the steady-state ELA because it is estimated from observations made in conditions that may not approximate to steady state. In particular, most published measurements of mass balance are negative.

Steady-state ELA

The ELA of a glacier in *steady state*.

The steady-state ELA is difficult to estimate because glaciers are seldom if ever in steady state. It is usually approximated by the *balanced-budget ELA*. To emphasize that the balanced-budget ELA and steady-state ELA are distinct concepts, the steady-state ELA should be given a distinctive symbol.

Transient ELA

The ELA at any instant, particularly during the *ablation season*.

The transient ELA is not in general the same as the *transient snowline*. The *superimposed ice zone* lies below the transient snowline and above the transient ELA.

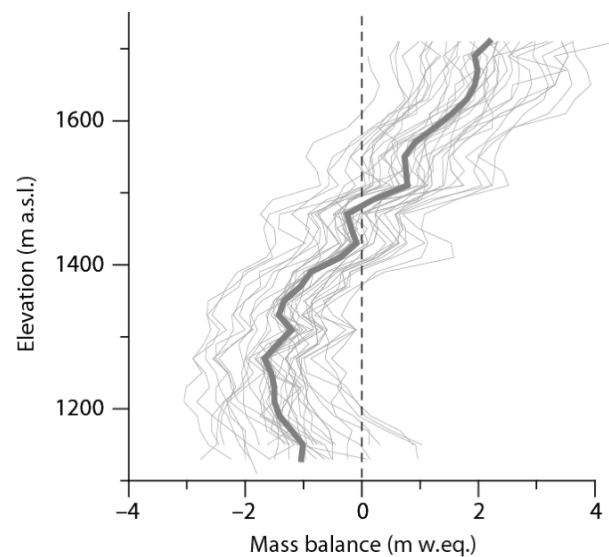


Figure 4. Net balance as a function of altitude on Storglaciären, 1961-2000. The thick line illustrates the average. Note, the profile is similar from year to year and more or less only evenly displaced depending upon the mass balance. The ELA is the elevation where the mass balance is zero.

9.3 Firn line

The set of points on the surface of a glacier delineating the firn area and, at the end of the mass-balance year, **separating firn** (usually above) from **glacier ice** (usually below).

In steady state and equilibrium, and in the absence of superimposed ice, the firn line coincides with the equilibrium line; however, the equilibrium line will generally be above the firn line in a year of negative mass balance and below it in a year of positive mass balance.

9.3 Snow line

The set of points on a glacier forming the **lower boundary of the snow-covered area**. The set of points need not form a continuous curve. The snow-covered area of the glacier may include outliers (isolated patches of snow) and may exclude inliers (isolated patches of exposed firn or ice). The snowline is usually easy to see, because the snow above it is brighter than the firn or ice below it. It may therefore be mapped by analysis of suitable imagery. When, and only when, there is no superimposed ice, the snowline coincides with the equilibrium line.

10. Mass balance sensitivity

The **change in mass balance due to a change in a climatic variable such as air temperature or precipitation**. Sensitivities to temperature and precipitation are often expressed as **changes in response to a 1 K warming or a 10% precipitation increase**, resulting in a negative sensitivity to temperature and a positive sensitivity to precipitation. Mass balance does not vary linearly with temperature in general; that is, db/dT is not a constant.

Sensitivities are generally derived from mass-balance modelling, that is, from the difference in mass balance between model runs with and without climate perturbation, but have also been estimated from mass-balance and climate observations. In contrast to the “**dynamic**” sensitivity, the “**static**” mass-balance sensitivity neglects changes in glacier size and geometry. The sensitivity is a measure to compare how different glaciers react to a climate change. The concept has been used widely to assess the response of the mass balance to future climate change.

Sensitivity is affected by:

- Glacier surface slope (large slope → high sensitivity)
- Morphology: inclination and proportion near the equilibrium line (small inclination → large proportion → high sensitivity, (Fig. 4))
- Climate: continental glaciers have lower sensitivity, while maritime glaciers have a higher sensitivity. Values exceeding -2 m a⁻¹ have been obtained from modelling.

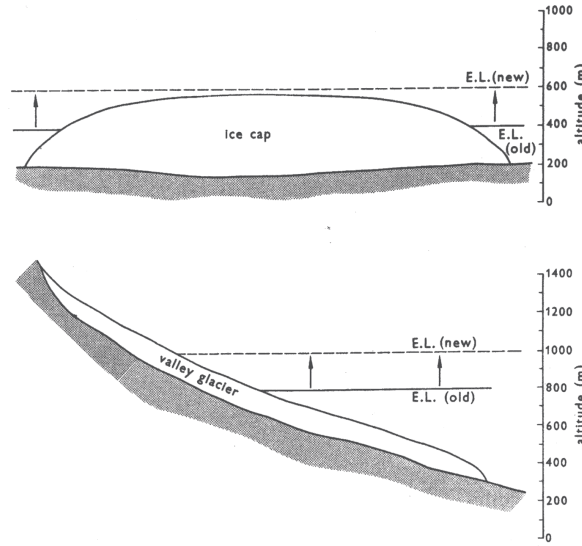


Figure 5. Effects of an increase in equilibrium line altitude on a small ice cap and a valley glacier. Observe the large sensitivity of the ice cap (Sugden & John 1984, p.105).

Seasonal sensitivity characteristic (SSC)

A set of sensitivities, $C_{T,k}$ (in m w.e. K^{-1}) and $C_{P,k}$ (in m w.e.), of annual mass balance B to changes in monthly mean temperature T_k and monthly precipitation P_k , where $k = 1, \dots, 12$ is the month index and precipitation is normalized by $P_{ref,k}$, the monthly precipitation averaged over a reference period (Fig. 5).

The SSC was introduced by Oerlemans and Reichert (2000) and accounts for the fact that sensitivities strongly vary on a seasonal basis. Algebraically it consists of two sets of 12 numbers each:

$$C_{T,k} = \frac{\partial B}{\partial T_k} \quad ; \quad C_{P,k} = \frac{\partial B}{\partial (P_k / P_{ref,k})}$$

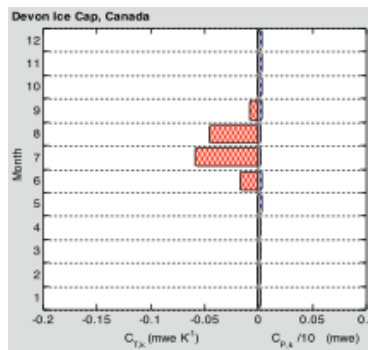


Figure 6. Seasonal sensitivity characteristic of Devon Ice Cap, Canada.

The change in mass balance due to a temperature change is computed by multiplying the sensitivities by the temperature change. This is done most accurately using seasonal sensitivities instead of annual sensitivities because temperature changes are often not homogeneous throughout the year.

Using sensitivities to compute mass balances (future, past)

Sensitivities have been used to compute future mass balances. If the sensitivity is known and the change in temperature (for example from a climate scenario), the specific mass balance, i.e. the mass change due to the temperature change can be computed. The mass balance is given by multiplying the sensitivity by the temperature change. Note that this assumes that the initial mass balance is zero.

The sensitivity approach only gives the mass change compared to if no temperature increase had occurred. If the mass balance was negative in the first place this balance needs to be added to arrive at the total specific mass balance.

10. Synthesis – Take-home message

Any reporting of mass-balance (mass change) should always specify

- a) the **domain** of the balance (glacier-wide, some part of a glacier, point on glacier, glacier complex or region ...), and the **glacier area** (to allow conversion from specific units to mass/volume units and vice versa).
- b) the **period of time** over which the mass change occurred (i.e. report **start and end date**, or time system in case of stratigraphic balances, where the dates are typically unknown; Qualifiers like ‘summer’, ‘winter’ are insufficient, since they do not allow the balances to be compared easily with model results unless dates are given).

References

- Cogley, J.G., R. Hock, L.A. Rasmussen, A.A. Arendt, A. Bauder, R.J. Braithwaite, P. Jansson, G. Kaser, M. Möller, L. Nicholson and M. Zemp, 2011. *Glossary of Glacier Mass Balance and Related Terms*, IHP-VII Technical Documents in Hydrology No. 86, IACS Contribution No. 2, UNESCO-IHP, Paris. 114pp.
- Elsberg, D.H., W.D. Harrison, K.A. Echelmeyer and R.M. Krimmel, 2001, Quantifying the effects of climate and surface change on glacier mass balance, *J. of Glaciology*, **47**(159), 649–658.
- Harrison, W., Elsberg, Cox and March, 2005. Different balances for climatic and hydrological applications. *J. Glaciol.*, page 176.
- Huss, M., A. Bauder and M. Funk, 2009, Homogenization of long-term mass-balance time series, *Annals of Glaciology*, **50**(50), 198–206.
- Oerlemans, J. and B.K. Reichert. 2000. Relating glacier mass balance to meteorological data by using a seasonal sensitivity characteristic. *J. Glaciol.*, **46**(152), 1–6.
- Sugden, D. and B. John, 1984. *Glaciers and Landscape*. Edward Arnold, London, 376 pp.

Other useful references on Mass Balance

- Bamber, J. and A. Payne, 2004. *Mass Balance of the Cryosphere*. Cambridge University Press. 644 pp.
- Cogley, J.G. 2005. Mass and energy balances of glaciers and ice sheets. In *Encyclopedia of Hydrological Sciences*, vol. 4, edited by M.G. Anderson, 2555-2573, John Wiley, Hoboken, New Jersey.
- Dyurgerov, 2002. *Glacier Mass Balance and Regime: Data of Measurements and Analysis*. Institute of Arctic and Alpine Research, University of Colorado. Occasional Paper No. 55.
- Dyurgerov M. B., and M. F. Meier (2005), *Glaciers and the changing Earth system: a 2004 snapshot* (Occasional Paper 58, Institute of Arctic and Alpine Research, Univ. of Colorado, Boulder, Colorado).
- Østrem, G. and Brugmann, M., 1991. *Glacier Mass-Balance Measurements. A Manual for Field and Office Work*. NHRI Science Report 4, NVE, Oslo, 224 pp.
- Zemp, M., Thibert, E., Huss, M., Stumm, D., Denby, C.R., Nuth, C., Nussbaumer, S.U., Moholdt, G., Mercer, A., Mayer, C. and Joerg, P.C., 2013. Reanalysing glacier mass balance measurement series. *The Cryosphere*, **7**(4), pp.1227-1245.

Special issue on “Methods of Mass Balance Measurements and Modelling” in *Geografiska Annaler*, Ser. A, **81A**(4), 1999.