

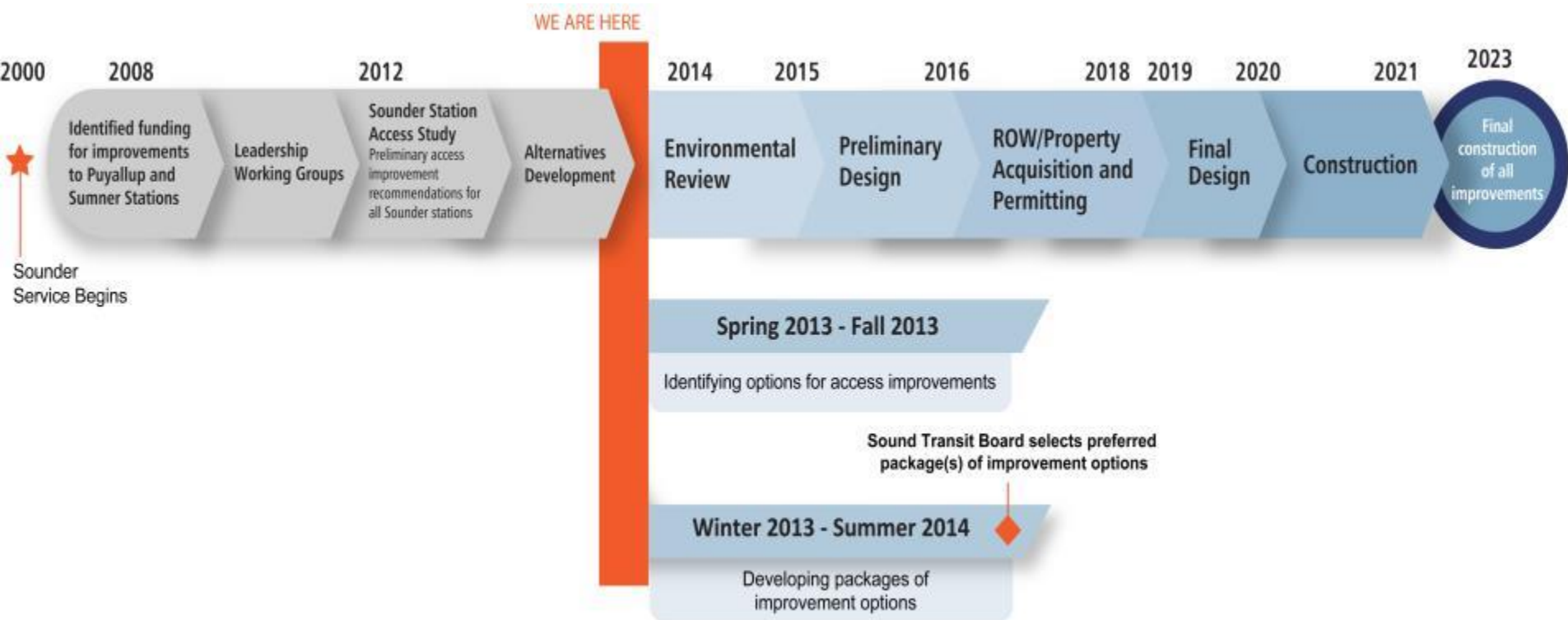
A low-angle shot of a white and blue Sound Transit train at a station platform. The train has a teal wave-like graphic on its side. The platform has a glass and metal roof structure. The text "Sumner Station Access Improvements Project" is overlaid in white on a dark grey banner across the middle of the image.

Sumner Station Access Improvements Project

SOUNDTRANSIT

Presentation Overview

- **Project Update**
- **Preview of February 4, 2014 Open House**



Schedule

Project goals and evaluation criteria

DRAFT GOALS	EVALUATION CRITERIA
Provide improved access to Sounder riders	<ul style="list-style-type: none">• Provides capacity for existing and future riders• Provides safe, multi-modal access and reliable travel times to the Sounder station area for riders
Benefit the local community	<ul style="list-style-type: none">• Supports community character, vision, plans and policies for the station area, including historic downtown• Supports access to parking for downtown businesses and residences within the station area• Minimizes additional congestion and impacts to neighborhood traffic within the station area
Support Sound Transit's regional commitments	<ul style="list-style-type: none">• Is cost-effective and financially sustainable• Supports plans and policies from Sound Transit and regional policies• Builds on the access improvements identified in the Sounder Stations Access Study
Maintain a healthy environment	<ul style="list-style-type: none">• Minimizes potential adverse impacts to the natural and built environment

How are riders getting to Sumner?



49% from addresses within **5 miles**

Parking Spaces

343 dedicated

99% occupied

302 Sounder lot + **41** State Street lot

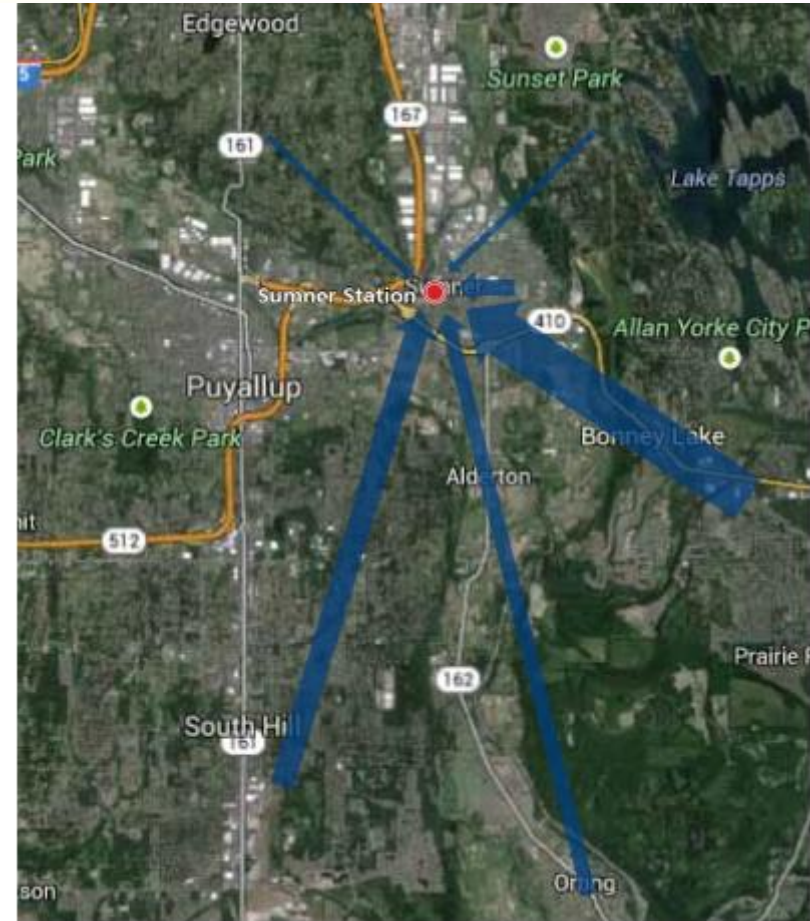
- Additional parking provided at the Red Apple lot (219 spaces) and Bonney Lake Park and Ride (356 spaces)
- Street parking within 1/2 mile of station



*walking from home

Where Drivers Are Coming From?

The majority of Sounder riders are traveling to the Sumner Station from the south and the east.



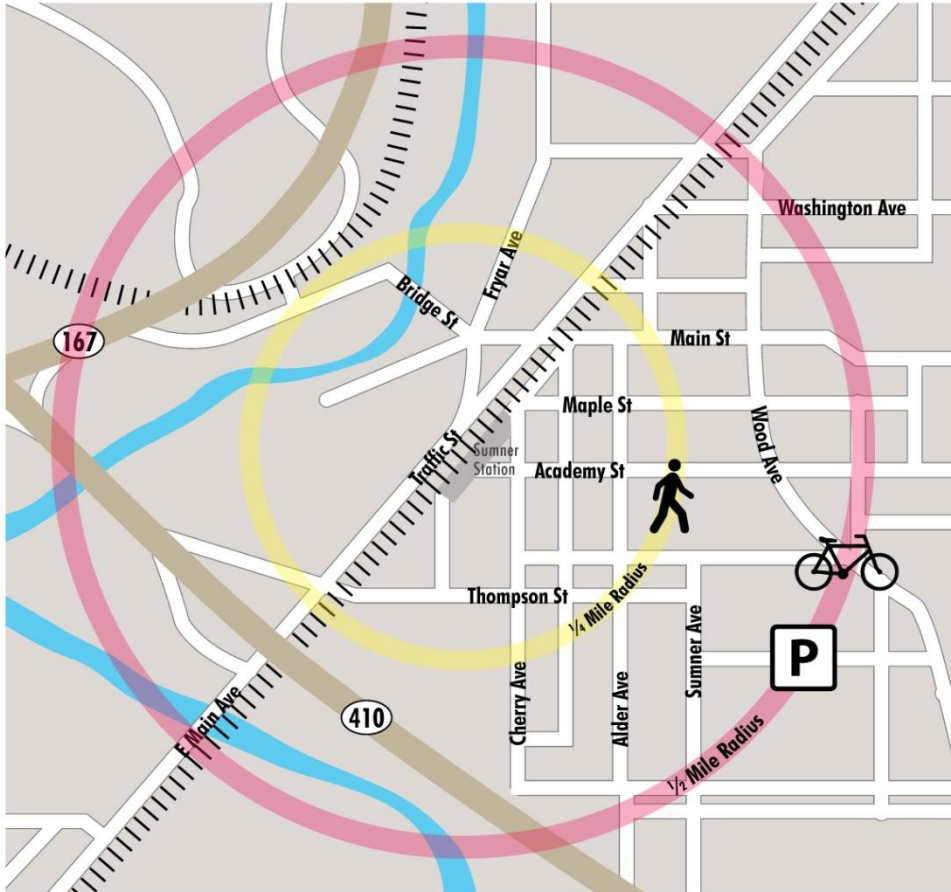
Arrows show the relative number of cars traveling to Sumner Station.

Sounder Station access challenges

- Sounder service will increase to 13 trains by 2017.
- Sounder ridership is expected to grow by about 70% before 2035 - about 600 riders at this station.
- Even as ridership increases, more than half of Sounder riders will continue to access the station by car.
- Currently, dedicated parking spaces are full by the second train in the morning.

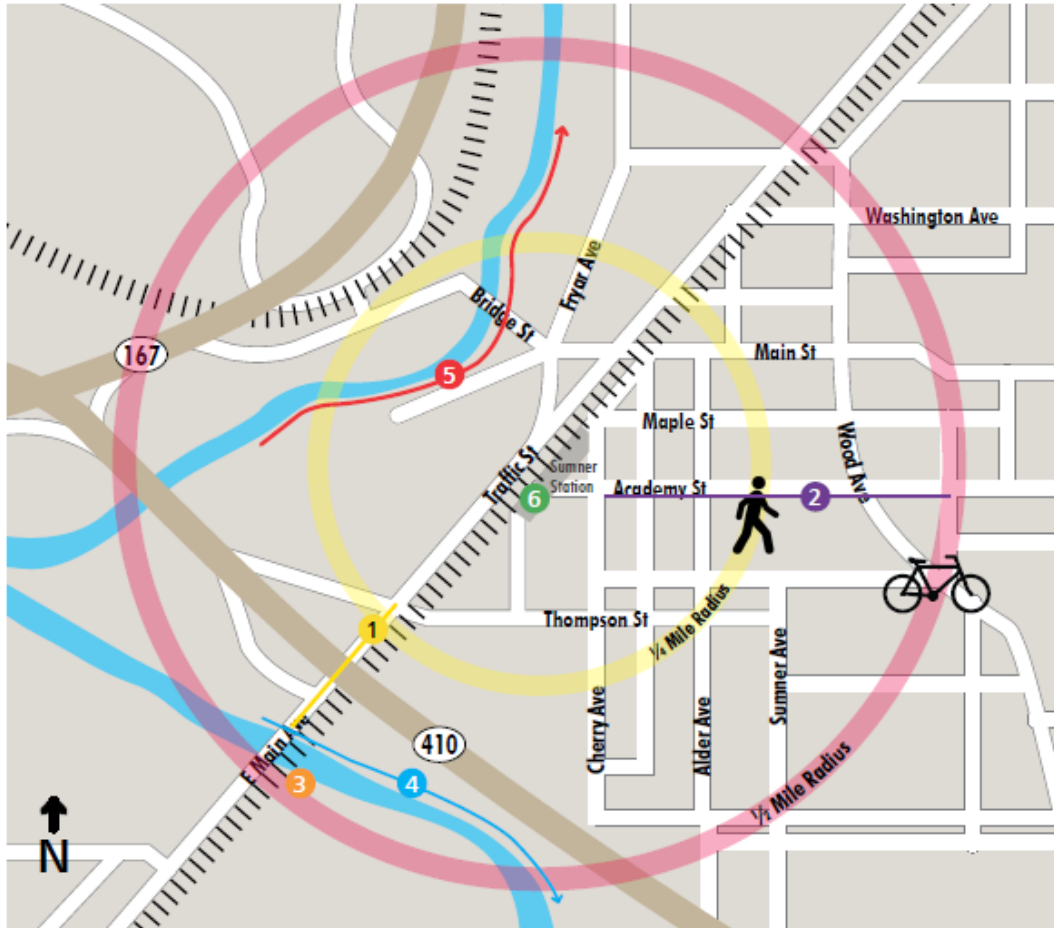


Sumner Station access improvements



- Project purpose: Improve access for Sounder riders to the Sumner Sounder Station
- Focusing pedestrian and parking garage improvements within $\frac{1}{4}$ mile
- Focusing parking lot, vehicle access and bicycle improvements within $\frac{1}{2}$ mile
- Total project budget \$37.8 million (2012 dollars)
- Investments to be made before 2023

Potential non-motorized improvements



Sumner Station Access Improvements Project is building on the pedestrian and access improvements identified as part of the 2010 – 2012 Sounder Station Access Study.

- 1 Linden Drive / SR 410 Crossing Improvements
- 2 Academy Street Bike Boulevard*
- 3 Riverwalk Trail Access Point
- 4 Puyallup River Trail Extension
- 5 White River Trail Extension (*Partially Complete*)
- 6 Station Pedestrian Bridge

*The specific types of bike improvements will be further evaluated as a part of the Sumner Station Access Improvement Project

Other Ideas for Non-motorized Improvements

- Pedestrian improvements/overpass at Thompson Street and Linden Drive E
- Pedestrian bridge across SR410 (midway between Traffic Avenue and SR 162 interchange)
- Complete missing sidewalk segments (especially in the SW of Sumner)
- ADA access (ramps) throughout the sidewalk system
- Bike sharrows along Academy out to Wood Avenue, from Wood Avenue south to Meade McCumber, from Meade McCumber moving south to Valley Ave East
- Connect Puyallup River Trail Extension to station via Alder Avenue or Sumner Avenue
- Note the city effort needed for bike boulevard identified in study (Academy Street)
- Tie bicycle amenities for station to a larger program with the city
- Improve lighting along city streets
- Projects that could particularly demonstrate the Sound Transit/Sumner partnership:
 - Programs that promote bicycling
 - Borrowed bikes; Bike Share
 - Bike lockers at both ends of the Sounder route
 - Developing bike lanes and/or segments
- Consider the future of cars and how changes will impact our choices

Potential Bus Improvements

Current service to the station is provided by ST Express route 596 from the Bonney Lake Park and Ride.

ST Express Route 578 offers mid-day express bus service to Seattle.

At the request of the city, Sound Transit is evaluating potential new and/or additional shuttle service for Sounder riders.*

Bus service may benefit from traffic management improvements such as transit signal priority.

* Shuttle service is not included in the voter-approved Sound Transit 2 plan.



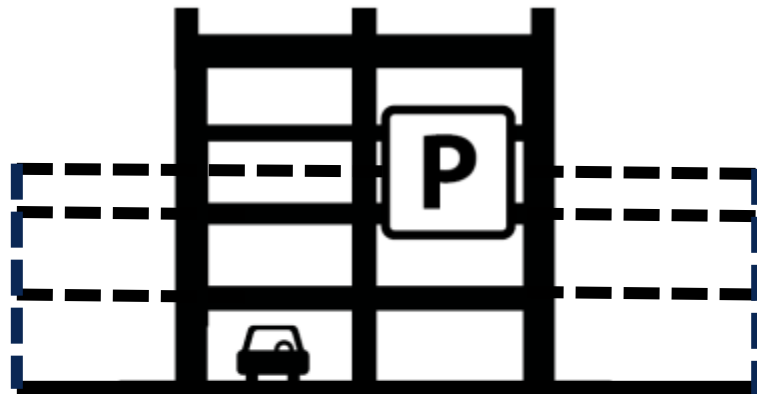
Potential Sites for Parking Improvements



Potential Types of Parking Improvements



and/or



Surface lot

- At least 30 and up to 300 parking spaces
- Leased and/or purchased
- \$5,000 per space to build

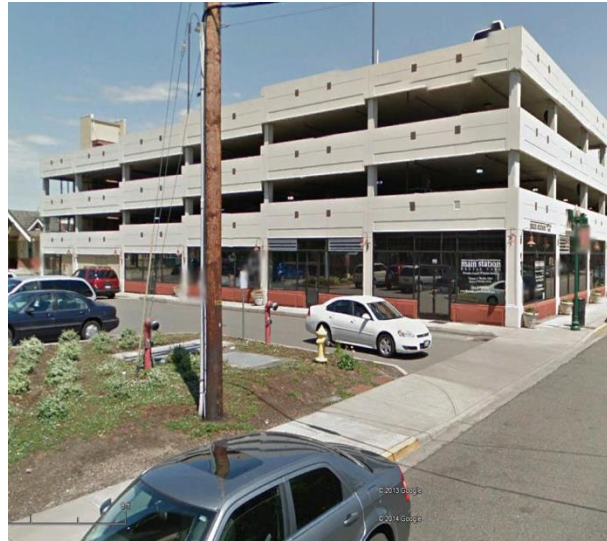
Parking garage

- Approximately 300 to 500 parking spaces
- Minimum size of 120 feet by 250 feet
- Up to 4-1/2 stories (parking on the roof of a 4-story building)
- \$25,000 per space to build

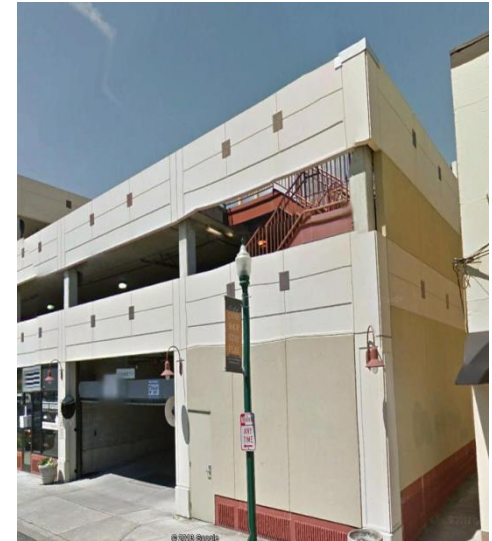
Example Parking Garage Heights



4 ½ story garage example
(5 levels of parking)



3 ½ story view of Puyallup DSHS garage
(4 levels of parking)



2 ½ story view of Puyallup's DSHS garage
(3 levels of parking)

What can a garage look like?



Today



In 2035 without parking improvements



In 2035 with parking improvements



- Intersections with traffic delays
- Delays of more than 1 minute
 - Delays of less than 1 minute
 - Length of delay depends on the location of parking facilities

Traffic Congestion Around Sumner Preliminary Findings*

* Based on PSRC's 0.8% regional growth rate

Potential Congestion Improvements

Sound Transit is exploring options to reduce transit rider-related congestion near the station, including:

- Tools to manage traffic, including additional traffic signals and coordination of existing signals
- Adding capacity to existing intersections
- Focused capacity improvements to existing roads



In 2035 with parking improvements



Intersections with substantial traffic delays with the addition of 400-600 parking spaces near Sumner Station

In 2035 with bridge and parking improvements



Intersections with traffic delays

Sound Transit is exploring potential partnership opportunities with WSDOT and local jurisdictions to make improvements to the bridge over SR 410.

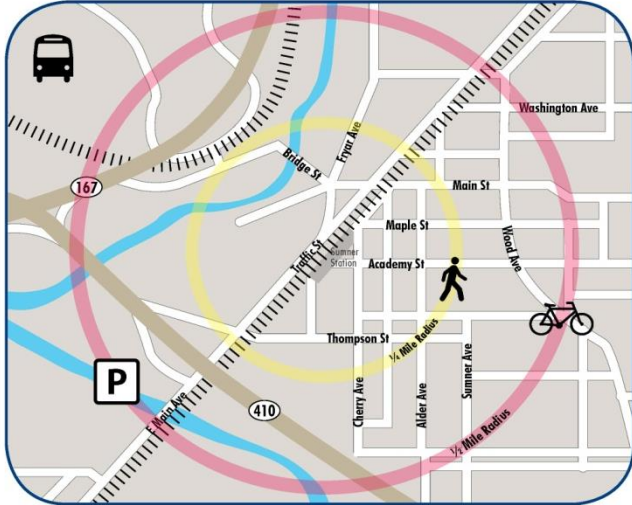
Legend

- Delays of more than 1 minute
- Delays of less than 1 minute
- Length of delay depends on the location of parking facilities

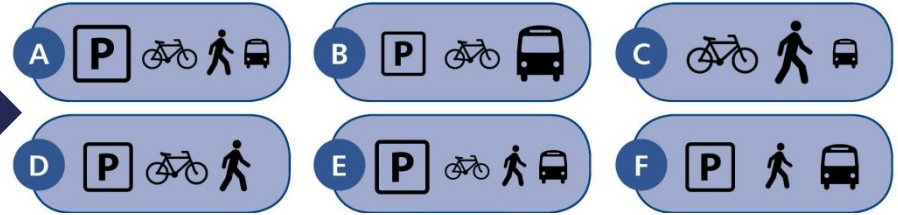
Area for potential improvements

Developing improvement options

Identify improvement options



Develop and evaluate packages of improvement options



Refine package(s) of improvement options



Sound Transit Board selects preferred alternative(s)

Summer 2014

Open House

Sumner Station Access Improvements

- Tuesday, February 4, 2014
4:30 to 7:30 pm
Sumner City Hall



- Post card mailing, web announcements, e-update, rider announcements, social media
- Press release and display ads to Bonney Lake-Sumner Courier Herald, Puyallup Herald and Tacoma News Tribune

Contact Us

Ryan Bianchi, Community Outreach

(206) 398-5070

ryan.bianchi@soundtransit.org

www.soundtransit.org/SumnerImprovements

The image features a close-up of a white and blue Sound Transit train car with a wavy graphic design. A dark grey horizontal band is overlaid across the middle of the image, containing the Sound Transit logo and the slogan "RIDE THE WAVE".

 **SOUNDTRANSIT**
RIDE THE WAVE