

Sunseeker BY FOREST RIVER

YELLOWSTONE
THE BEACH
GRAND CANYON

WHERE DO YOU WANT TO GO?



Sunseeker
BY FOREST RIVER





SUNSEEKER

2860DS

PALM SAGE

With the two slide outs in the 2860DS Sunseeker, you will live in spacious comfort. The bedroom slide gives you additional room and closet storage. The living room slide out gives you more open space for family and friends to enjoy...just like home.



The all new 3120 DS is a campers dream come true. Highlights include:

1. An enormous rear pass through that offers the most exterior storage in its class.
2. A master bath that finally lives up to the name.
3. A slide out bedroom with wardrobe & vanity.
4. A living room slide out to open up the space, a thoughtfully designed kitchen with a multitude of storage options and an oversized pantry.





SUNSEEKER

3100SS

SANGRIA

The 3100SS super-slide Sunseeker gives you a huge, open living area for everyone to enjoy. Whether you are watching TV or playing cards with friends, there is sure to be plenty of room in your Sunseeker.



When you're not sure what the weather may bring, the 2860 DS is the floor plan for you. Featuring dual wardrobes and tons of drawers you can pack for four seasons. In addition the front entertainment center maximizes your storage space by using slide out drawers.

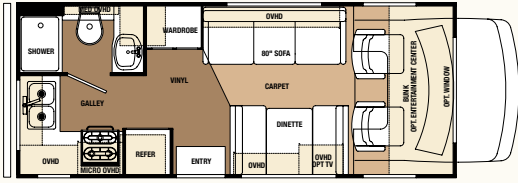


The "Dream Dinette" pictured below has revolutionized the "dinette bed" dilemma. With a simple flip of the lever, the table top easily lowers into position. No more awkward tabs or rattling hardware. Dinette drawers also make it easier to access items stored below without disturbing the kids

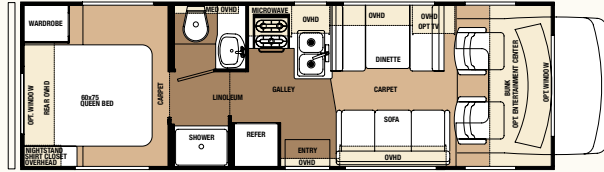


Sunseeker Floorplans

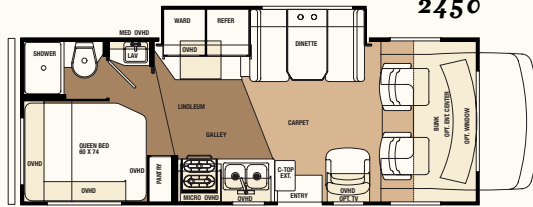
2200



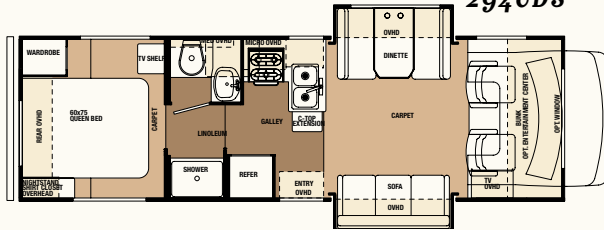
2900



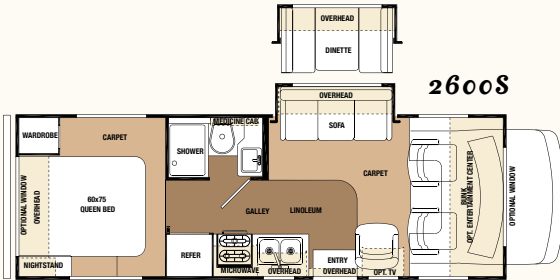
2450



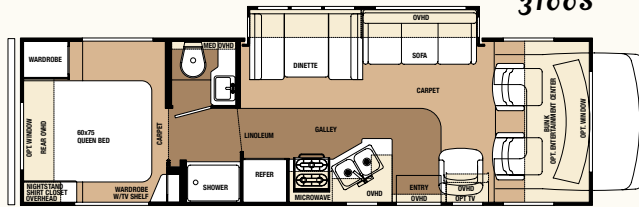
2940DS



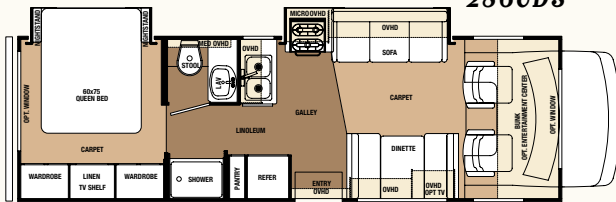
2600S



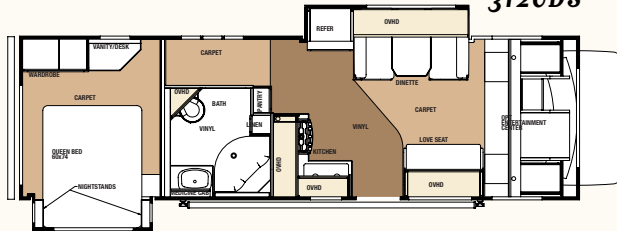
3100S



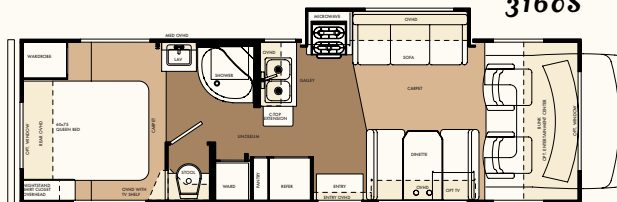
2860DS



3120DS



3160S



Sunseeker Interiors



Fusion Sand



Sangria



Palm Sage



Maple

Model Specifications

FORD CHASSIS	2200	2450 S	2600 S	2860 DS	2900	2940 DS	3100 SS	3120DS	3160 S
WHEELBASE	178"	166"	188"	202"	188"	198"	220"	***	212"
GVWR	14050	14050	14050	14050	14050	14050	14050	14050	14050
GAWR	9450	9450	9450	9450	9450	9450	9450	9450	9450
GAWF	4600	4600	4600	4600	4600	4600	4600	4600	4600
UVW	10190	11150	10430	12570	11250	12345	12370	12590	12285
GCWR	20000	20000	20000	20000	20000	20000	20000	20000	20000
NCC	3860	2900	3620	1480	2800	1705	1680	1460	1765
FUEL CAPACITY (gal.)	55	55	55	55	55	55	55	55	55
DIESEL ENGINE OPT.	NA	NA	YES	NA	YES	NA	NA	NA	NA
LENGTH	24'2"	26'	27'7"	30'6"	29'9"	30'6"	31'8"	31'5"	31'5"

CHEVY CHASSIS

WHEELBASE	NA	167"	189"	NA	189"	NA	NA	NA	NA
GVWR	NA	12300	12300	NA	12300	NA	NA	NA	NA
GAWR	NA	8600	8600	NA	8600	NA	NA	NA	NA
GAWF	NA	4300	4300	NA	4300	NA	NA	NA	NA
UVW	NA	9999	10655	NA	10841	NA	NA	NA	NA
GCWR	NA	17000	17000	NA	17000	NA	NA	NA	NA
NCC	NA	2301	1645	NA	1459	NA	NA	NA	NA
FUEL CAPACITY (gal.)	NA	57	57	NA	57	NA	NA	NA	NA
LENGTH	NA	26'10"	28'5"	NA	30'7"	NA	NA	NA	NA

CAPACITIES & DIMENSIONS

EXT. HEIGHT WITH A/C	11'6"	11'6"	11'6"	11'6"	11'6"	11'6"	11'6"	11'6"	11'6"
EXT. WIDTH	101"	101"	101"	101"	101"	101"	101"	101"	101"
INT. WIDTH	96"	96"	96"	96"	96"	96"	96"	96"	96"
INT. HEIGHT	84"	84"	84"	84"	84"	84"	84"	84"	84"
FRESH WATER (GAL)	25	44	40	44	40	40	40	40	40
GREY WATER (GAL)	27	20	27	47	47	35	47	30	35
BLACK WATER (GAL)	27	27	27	27	27	35	27	30	35
L.P. CAPACITY (GAL)	9.8	9.8	9.8	9.8	9.8	9.8	9.8	9.8	9.8
AWNING LENGTH	12	12	12	16	14	16	16	16	16
WATER HEATER (GAL)	6	6	6	6	6	6	6	6	6

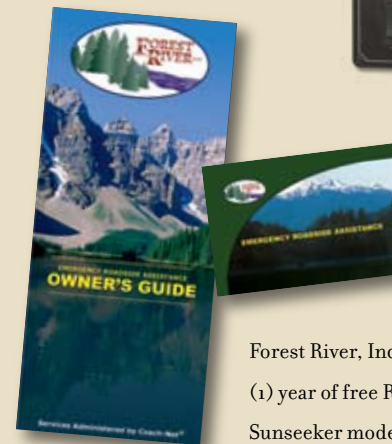
*** NOT AVAILABLE AT TIME OF PRINTING.



The Sunseeker Class C motorhome is built to exacting specifications for superior quality and finish in our state-of-the-art production facility. Here, skilled workers assemble each Sunseeker with pride, knowing that a satisfied customer is often a repeat customer.



The Sunseeker's handy convenience center allows you to access everything from the slide-out to the power generator, all in one location.



Forest River, Inc., in affiliation with Coach-Net®, is providing one (1) year of free Roadside Assistance to all retail purchasers of new Sunseeker models. This is just one more way to say "Thank You" and to ensure you have an enjoyable rv-ing experience.



Forest River, Inc. 914 C.R. 1 Elkhart, IN 46514
800.445.2825, 574.262.2212 www.forestriverinc.com

All specifications contained herein are based on the latest product information at time of printing. Forest River reserves the right to make changes in colors, materials, equipment and specifications at anytime without notice and assumes no responsibility for any errors in this brochure.

Sunseeker Standards & Options

Systems: Standard features

- Battery disconnect
- Water heater bypass kit
- Water purification system
- Deep cycle coach battery
- 30 amp, 120 volt distribution panel & 30' power cord
- 55 amp, 12 volt power converter
- Six gallon gas/electric electronic ignition DSI hot water heater
- 30,000 BTU electronic ignition furnace
- Arctic package (cold weather package)
- Remote emergency start
- Cable/TV and phone jacks
- 15,000 BTU ducted roof air conditioner
- Generator auto transfer switch

Optional features

- 2nd auxiliary deep cycle coach battery
- 4,000 Onan generator
- 40G Guardian
- Water purification system

Exterior

- 2" laminated filon sidewalls, vacuum bonded with aluminum frame structure, steel backers & block foam insulation
- A & E slide out awnings
- All radius style exterior doors
- Aluminum running boards
- Entry door with screen door & dead bolt door lock
- Deluxe A & E awning
- Lockable rotocast pass-through storage compartments with lights
- Patio light
- 110 Volt, GFI protected exterior receptacle
- Entry assist handle

- "Easy-Dump" valve dump stations
- "Easy-Fill" exterior water fill stations
- Entry step light
- Chrome hub caps
- Tinted sliding windows
- Deluxe break-away mirrors
- 5,000 lb. Tow hitch with 7-pin connector (Ford)
- 3,500 lb. Tow hitch with 7-pin connector (Chevy)

Optional features

- Electric entry step
- Stainless steel wheel liners
- Spare tire
- Roof ladder
- Outside shower
- Slide-out battery tray

Cab Area

- AM/FM/CD player
- Upgraded driver & passenger seats
- Cab area privacy curtains
- Dual 12 volt power points
- Cruise control
- Power windows & locks

Galley Area

- Single lever chrome faucet
- Three burner range with oven
- Flush mount two door refrigerator/freezer
- Solid surface edged countertops
- Range hood with fan & light with bi-fold range cover
- Residential-style drawer construction with maple face fronts and metal guides
- Microwave oven
- Flip-up counter top extensions

Optional features

- Raised maple refrigerator door panels

Bathroom Area

- Large medicine cabinet with mirrored maple cabinet doors
- Deep sink with dual control faucet
- Porcelain toilet
- Frosted glass shower door with heavy duty frame (NA 2200, 2450)
- Six panel maple bathroom door
- Bath amenity package (towel bar, tissue, tooth brush, & soap holder)
- Solid surface edged countertops
- Electric roof vent fan
- Wall mount mirror
- Molded ABS shower pan & surround
- Shower head with flexible hose extension
- Shower sky light
- Light switch

Bedroom Area

- Innerspring mattress
- Bedspread with pillow shams
- TV shelf with AC receptacle & cable TV jacks
- Adjustable reading lights
- Night shades with upscale window treatments
- Bedroom stereo speaker package
- Bi-fold privacy door
- Light switch

Optional features

- Twin beds with innerspring mattresses (NA on 2200, 2450 S & 2860 DS)
- Bunk beds with innerspring mattresses (NA on 2200, 2450 S & 2860 DS)

Living Room Area

- Maple wood cabinetry throughout
- Raised panel maple doors
- Pewter grab handles & hinges
- 2-way sofa with convertible sleeping
- Night shades with deluxe window treatments
- 7' ceiling height
- Light switches

Optional features

- Cab over entertainment center with 24" flat screen TV
- 19" flat panel TV w/ DVD
- 450 watt inverter
- Cab over bunk window
- Vinyl floor throughout in place of carpet
- 23" Flatpanel LCD TV with DVD, surround sound and exterior hook-up
- Fantastic fan

Warranty: Standard features

- 12 Months/12,000 miles basic limited warranty
- 3 Years/36,000 miles chassis warranty

Your Sunseeker Dealer