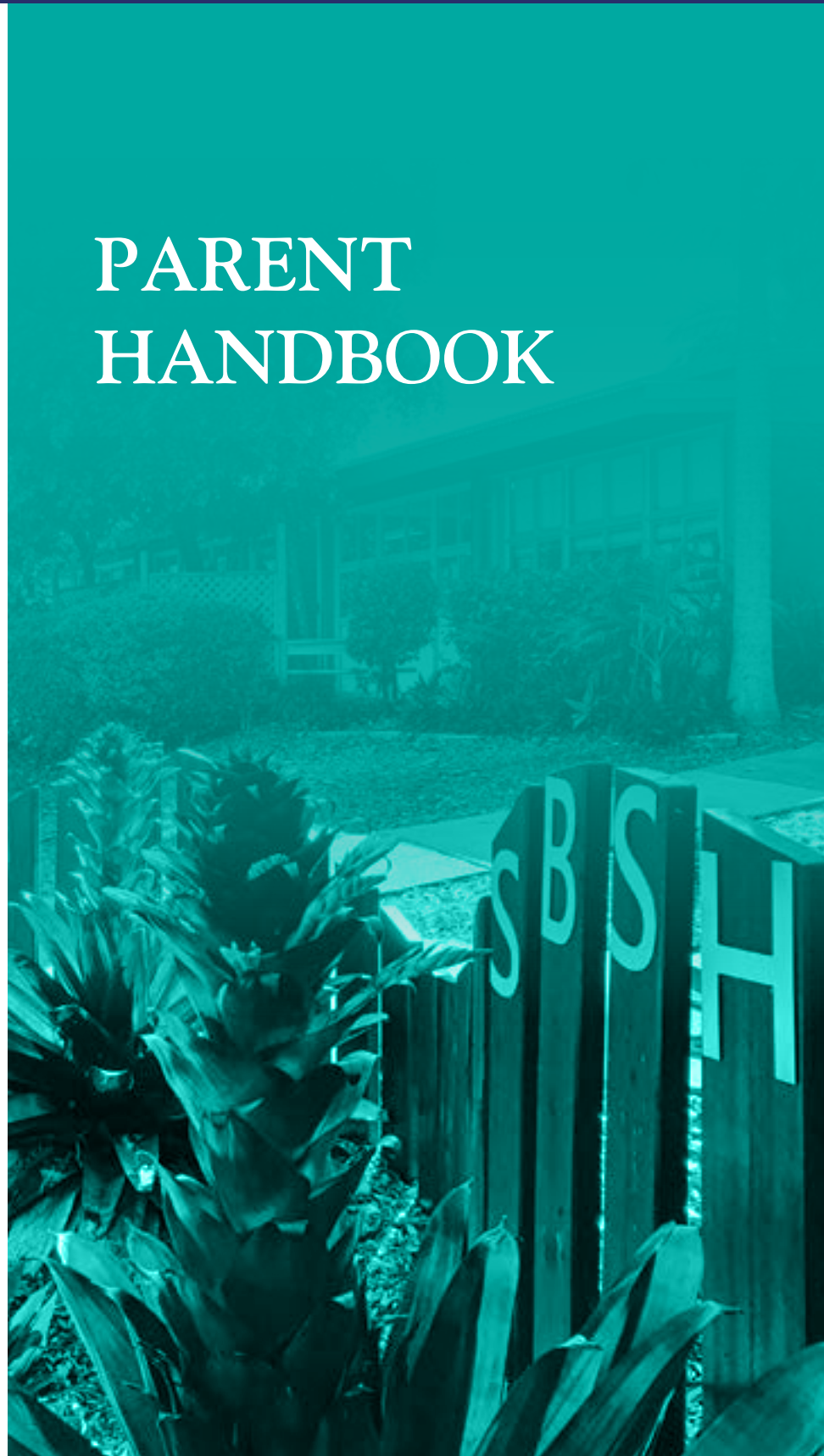




Sunshine Beach State High School



PARENT HANDBOOK





Welcome to... Sunshine Beach S.H.S.

- P**urpose
- R**espect
- I**nnovation
- D**iligence
- E**nthusiasm

PLEASE NOTE

All visitors must sign in at the
ADMINISTRATION BUILDING



STAFF ROOMS

- BANZAI**
- MUNDAKA**
- ULUWATU**
- WAIMEA**
- K BLOCK**
- C BLOCK**

VENUES

- **STUDENT CENTRE**
- **PERFORMING ARTS** Cavern Theatre
- **HOME ECONOMICS** Lexcen's Restaurant
- **INDUSTRIAL TECHNOLOGY DESIGN**



WELCOME

Choosing the school that best meets your child's needs is one of the most important choices a parent/guardian will make. Sunshine Beach State High School thanks you for the opportunity to provide you with initial information that highlights key aspects of our vision for your child's education and learning opportunities for their future.

Our school vision - Empower lifelong learners through a challenging and supportive school community.

Our school values - Purpose, Respect, Innovation, Diligence and Enthusiasm.

Sunshine Beach State High School is a dynamic, progressive and internationally accredited school meeting the needs of 21st Century learners. Our school focuses on the development of positive relationships with students and the community, with multiple pathways for students and high quality teaching, learning and innovation. We have a strong academic focus and maintain links with several universities, while providing opportunities for workplace learning and certificate courses. Our staff consistently go beyond in providing unique and stimulating learning experiences as well as offering a large number of extracurricular activities in the sporting, academic and cultural fields.

Our Music and Surfing Excellence programs are well-established programs that have paved the pathway for many students to achieve Regional, National and International recognition for their talents.

Our global focus in learning is embodied in the international programs that we participate in allowing both students and teachers to travel and interact with others from across the world. Our New Pedagogies for Deep Learning (NPDL) framework ensures we are explicitly teaching "the 6 Cs" to create globally aware, creative, critically thinking and socially aware young citizens. At Sunshine Beach State High School we look to ensure "Quality in All we Do". We welcome you to our community.

Grant Williams
PRINCIPAL

SCHOOL ENROLMENT MANAGEMENT PLAN

Sunshine Beach State High School recognises as its prime obligation, the provision of access to an appropriate educational service for students whose principal place of residence is within the school's catchment area.

Because of enrolment capacity and growth, Sunshine Beach State High School may be unable to meet this obligation in the future unless action is taken to manage enrolments. The Principal must restrict the enrolment of out-of-catchment students to ensure in-catchment students can enrol at their local state school without requiring additional facilities.

Local catchment area

A school's local catchment area is the defined geographical area from which the school is to have its core intake of students.

Sunshine Beach State High School operates under an equidistant catchment area.

The school's catchment map is available from EdMap.

Out-of-catchment application

Out-of-catchment students applying for enrolment at the school are placed on a waiting list, assessed in order of receipt and prioritised as follows:

- For schools with a Program of Excellence
Subject to available student enrolment capacity, places will only be available to out-of-catchment enrolments if they satisfy the school's criteria for placement in that particular Program of Excellence and the defined number of places has not yet been filled by enrolments from within the catchment. Sufficient student enrolment capacity must be reserved for future in-catchment growth. (Please note: The enrolment criteria for the Programs of Excellence are available from the school.)
- All other out-of-catchment enrolment applications.

Enrolment policy and procedure

The Enrolment Policy includes further information about in-catchment and out-of-catchment enrolments, acceptance and assessment processes, as well as any associated fees and decisions on enrolments.

For further information regarding School Enrolment Management Plans, please refer to the School Enrolment Management Plans Procedure or contact the School Principal.

Gazettal date

This updated version of the School Enrolment Management Plan for Sunshine Beach State High School was gazetted on 14 September 2018.

The School Enrolment Management Plan is internally reviewed each year, and if required, updated to reflect any changes to student enrolment capacity and/or Programs of Excellence.

Last updated 30 October 2018

VISION AND VALUES

Empowering lifelong learners through a challenging and supportive learning environment.

PURPOSE

When you have purpose you have a clear focus. Begin with a vision for what you want to accomplish and concentrate on our goals. Doing one thing at a time without scattering your energies. Some people let things happen. When you are purposeful, you make things happen.

RESPECT

We show respect by speaking and acting with courtesy. We treat others with dignity and honour the rules of our family, school and nation. Respect yourself and others will respect you.

INNOVATION

We are innovative when we take on board new and/or different ideas or ways of thinking. Innovation helps you to grow and develop by challenging you as a person and an active member of society.

DILIGENCE

Diligence is working hard and doing our absolute best by taking special care by doing things step by step. Diligence helps you to get things done with excellence and enthusiasm. Diligence leads to success.

ENTHUSIASM

Enthusiasm is being cheerful, happy and full of spirit. It is doing something wholeheartedly and eagerly. When you are enthusiastic, you have a positive attitude. Enthusiasm is being inspired.



TEACHING & LEARNING – THE SUNSHINE WAY

Sunshine Beach State High School would like to extend a warm welcome to families joining our learning community. Our school will provide students with engaging learning platforms that inspire minds, create opportunities and build a brighter tomorrow.

Our school motto is “Quality In All We Do” and we offer a variety of subjects that will support students to achieve success. Delayed specialisation, combined with expert teachers, quality resources and a wide range of learning opportunities allows every student to experience success and to plan for their future.

21st Century skills:



Sunshine Beach State High School will provide students with many opportunities to build the foundations for future success, but ultimately, the responsibility for success rests with the student.

We trust that you will enjoy the challenge of secondary schooling. A solid foundation in Junior Secondary will ensure that you have a smooth transition to Senior Secondary and beyond.

PUTTING THE 'DEEP' INTO LEARNING

New Pedagogies for Deep Learning (NPDL) is a global initiative launched by Michael Fullan, a leading authority on education reform. Our school is one of a thousand schools worldwide sharing best practice in how to prepare and equip our students for the future. Through this global partnership, Sunshine Beach State High School will be working together with other schools to explore the challenge of designing relevant and authentic teaching and learning experiences that better prepares students for the world around them. At the heart of NPDL are the 21st Century skills of Creativity, Citizenship, Critical Thinking, Communication, Collaboration and Character, known as the 6Cs.



COLLABORATION

Work interdependently and synergistically in teams with strong interpersonal and team-related skills including effective management of team dynamics and challenges, making substantive decisions together, and learning from and contributing to the learning of others



CHARACTER

Learning to deep learn, armed with the essential character traits of grit, tenacity, perseverance and resilience; and the ability to make learning an integral part of living.



CITIZENSHIP

Thinking like global citizens, considering global issues based on a deep understanding of diverse values and worldviews, and with a genuine interest and ability to solve ambiguous and complex real-world problems that impact human and environmental sustainability.



COMMUNICATION

Communicating effectively with a variety of styles, modes and tools (including digital tools), tailored for a range of audiences.



CRITICAL THINKING

Critically evaluating information and arguments, seeing patterns and connections, constructing meaningful knowledge and applying it in the real world.



CREATIVITY

Having an 'entrepreneurial eye' for economic and social opportunities, asking the right inquiry questions to generate novel ideas, and leadership to pursue those ideas and turn them into action.

UNITS OF WORK ARE DESIGNED AROUND THE 6Cs AND CONSIDER THE FOLLOWING COMPONENTS:

- The development of learning partnerships between and among students, teachers, families and communities;
- Exploring a range of learning environments; embedding the use of technology (using digital tools and resources in ways that accelerate and deepen learning);
- Creating learning tasks that are authentic, meaningful and allow for students to take responsibility for their own learning.

THE SUNSHINE WAY

- Teachers will make all students feel welcomed in their classrooms
- Teachers will clearly communicate to students what they are learning and provide them with feedback on their learning
- Teachers will include and engage all learners in their lesson design and implementation
- Teachers will compliment students when they are doing something well

WHY?

- Because when we provide a safe environment that embraces diversity and makes everyone feel welcome we enhance the education outcomes, health and wellbeing of the young people in our care.
- Because learning goals are the backbone of every lesson.
- Because student self-reflection/feedback is the number one critical factor for student success.
- Because when students are engaged, they learn better and achieve more in school and life.¹
- Because positive feedback improves student disposition to learning. And improved student disposition improves student outcomes.
- Because when teachers have high expectations for students and provide tasks that are engaging and of high interest, students build self-esteem, increase confidence and improve academic performance.²

1. Centre for Education Statistics and Evaluation, What works best: Evidence-based practices to help improve NSW student performance, NSW Department of Education and Communities, Sydney, 2014, p.23
2. Brophy, J. (2008). Developing student/s appreciation for what is taught in schools. Educational Psychologist, 43(3), 132–141.



GENERAL INFORMATION

The school's website www.sunshinebeachhigh.eq.edu.au contains additional information and hyperlinks that parents, students and community members will find helpful.

ATTENDANCE

All students are expected to attend all timetabled classes each day. Parents are asked to advise the school before 9.00am using the school's absence line (tel. 5440 4268) if a student is to be away from school. Alternatively, send an SMS to 0427 060 455, email attendance@sunshinebeachhigh.eq.edu.au or access QParents. The only acceptable excuses for absence are medical or emergency family circumstance related. If the absence is longer than 3 days, parents are asked to advise the School's Administration and make arrangements for work, if appropriate.

LATE ARRIVALS

Students who are late to school must go to Administration Sign In/Sign Out window and sign in. A student who arrived late must have a note explaining the lateness. Alternatively, please phone 5440 4268 to advise of late arrival.

EARLY DEPARTURE

Students who need to leave the grounds during the day must produce a note signed by a parent. The note should explain the reason for departure, the time to leave the grounds and the time of return, if returning. The note must be taken to Administration Sign In/Sign Out window before school. The note will be exchanged for a pass. It is school policy not to issue lunch passes for safety and social reasons.

EXTENDED ABSENCES OF 10 CONSECUTIVE DAYS OR MORE

Where a student will be absent for more than 10 consecutive school days, parents must apply to the Principal for an exemption to schooling. The student may be granted an exemption from schooling due to more than 10 consecutive school days or more and the student's enrolment status will be changed from A-Active to E-Exemption. A notification will be placed on the student's records to indicate the date on which the exemption expires. Once the student returns to school, their enrolment status will be changed to A-Active.

ABSENCES

In relation to absences for submission of assignments or exam date, negotiate another date using an extension form prior to the absence.

Absent on exam date	Exam will be completed on the next school day attended (doctor's certificate required, if sick).
Absent on due date	Send assignment in with a friend relative or via email on or before the due date – submit the task sheet (and any other required elements) by the next school day. If this is not possible, bring the assignment to the HOD the next day you are at school – don't wait until the next lesson of that subject.
Extension forms: doctor's certificate (sick) or parent note required	Extension must be applied for 24 hours or more before the due/sitting date. Use the Extension Request Application form from the relevant staffroom. Approved by HOD only.

PERSONAL PROPERTY

- Personal property and money is the responsibility of individual students. Students should carry their bags with them whenever possible.
- All personal possessions should be clearly labelled with the student's name.
- Valuables and large sums of money should not be brought to school. Any money that has to be brought to the school should be taken to the office as soon as the student arrives at school. The school does not accept responsibility for lost/stolen items.
- Students are not allowed to have the following items at school due to workplace safety issues: chewing gum, aerosol packs and blades or sharps or other items that could cause potential injury.
- Electronic equipment is not to be used for personal use during class. Devices are to be turned off during class time. They are brought to school at the student's own risk.
- If a student is required to call home, they are to use the office phone with permission (not personal mobile phone).

WEEKLY TIMETABLE

All students are provided with timetables for their classes. This can also be accessed through the student/s OneSchool login. Timetables follow a weekly schedule and incorporate sport, assembly, mentor and subjects. Students are encouraged to keep one copy in the Student Planner and one copy at home. Please refer to the following daily lesson times.

BELL TIMES

Lesson	Mon, Wed, Thu, Fri	Tues
S1 - Warning Bell	8.15 am	
S1	8.20 am	
L1	8.50 am - 10.00 am	8.50 am - 9.50 am
Parade or Connections		9.50 am - 10.30 am
Morning Tea	10.00 am - 10.30 am	10.30 am - 11.00 am
L2	10.30 am - 11.50 am	11.00 am - 12.10 pm
L3	11.50 am - 1.00 pm	12.10 pm - 1.00 pm
Lunch (Years 7 - 10) / Senior L4 (Year 11 & 12)	1.00 pm - 1.40 pm	
L4 (Junior Years 7 - 10)	1.40 pm - 2.50 pm	

FIRST AID

Basic first aid is available in each staffroom and at the office. If students are too ill to remain in class, arrangements will be made for the student to return home. An ambulance will be called if a student is seriously injured or ill. Parental permission will be sought when possible provided the time/situation permits. If a parent cannot be contacted, an ambulance will be called, whenever a student is too ill to remain at school.

NEWSLETTER

Twice a term, 'Flourish' our school newsletter will be emailed home. It will contain information about the month ahead, including details around curriculum study, assessment and important school dates and events.

FACEBOOK & INSTAGRAM

Our official school Facebook page and Instagram provides a rapid communication platform to celebrate success and alert parents to upcoming events. All parents are encouraged to 'like' the official page to stay up to date with all information.

PARENT GROUP

On the first Thursday of each month, parents are invited to join key staff at 9.00am at a nominated café or on school site for an informal coffee morning. This established group provides an opportunity for parents to meet each other, learn more about our school and freely ask questions. Coffee and cake are kindly provided by SBSHS. All parents are welcome to attend.

SCHOLARSHIPS

Sunshine Beach SHS offers Year 7 Excellence Scholarships in the following areas: STEM (Science, Technology, Engineering & Mathematics); English, Italian, Music and Sport. Three scholarships will be available across each of the five categories.

Students and parents are encouraged to take the time to consider applying, noting that application close mid May. Application forms are distributed to primary feeder schools early in the school year. If a student wishes to apply for more than one scholarship, multiple application forms are required.

Students who apply for a position in the Music Excellence Program will automatically be considered for a Music Scholarship. Further information along with the application can be found on our school website. Should you have any further questions regarding the Music Excellence Program, please contact Head of Department Mr David Allan on dalla20@eq.edu.au

Please note that to be eligible for a scholarship, the student must reside inside our school catchment area or alternatively be accepted into the Music or Surfing Excellence Programs.



STUDENT WELL-BEING PROGRAM #Connections

All students participate in #Connections every week. The class is aligned with students' House Groups (year level house parade groups). These groups stay together with their teacher (where possible) throughout their time in high school, building house spirit and 'connections'. The program will rotate with assemblies (year level and/or house), and there will be a minimum of 5 x 40 minute #Connections lessons per term.

The #Connections program focuses on developing connections with teachers, other students, and the community and covers the following areas:

Learning: Teaching students to be responsible for their learning, and understand the process of learning. Giving students opportunity to define their learning goals, monitor their learning and assess their progress.

Aspirations: Students believing that they can achieve, and having high expectations of themselves.

Belonging: Encouraging students to develop positive relationships, and participate in a positive way in their community.

Students learn about what it is to have character (learning to deep learn; learning to have grit, tenacity, perseverance, and resilience; learning about self-regulation and responsibility; and learning about having empathy for contributing to the safety and benefit of others).

STUDENT WELL-BEING

An integral part of well-being and support for students is their Head of Year (HOY). The Head of Year is often the first point of contact when students have questions and are seeking support. Our school also has two Guidance Officers, two school-based Youth Health Nurses and a Chaplain who can support students. The Well-Being space is located in C Block.

EXTENSION PROGRAMS

Sunshine Beach State High School offers extension programs to selected students in Year 4 to Year 8. The Young Crest Scholars Program (Years 4-6), Crest Program (Year 7) and the Academic Pipeline Program (Year 8) have been designed to provide enrichment opportunities for highly motivated students to develop their skills in critical thinking, communication, collaboration, creativity and innovation.

Successful applicants of the Young Crest, Crest & Pipeline Programs will participate in a number of challenging activities with other like-minded students. All programs have been designed around Science, Technology, Engineering and Mathematics (STEM).

Why is STEM important?

STEM touches every aspect of our lives, from our smartphones to the technologies that enable us to explore the world around us and outer space. It drives innovation in our fast-changing global economy, builds skills within students to succeed within this environment and enables Queensland to continue to prosper into the future.

Through these programs, we enhance the quality of teaching and learning inside our classrooms and commit to providing our students with a strong foundation in STEM.

Young Crest Scholars

Sunshine Beach SHS offers the Young Crest Scholars Program for students in Years 4, 5 and 6. The application-based program is designed to provide enrichment opportunities for highly motivated students to develop their skills in critical thinking, communication, collaboration, creativity and innovation. Young Crest scholars will participate in a number of challenging activities with other like-minded students.

The structure of Young Crest Scholars will see successful applicants participate in four "Excellence Days" throughout the year at Sunshine Beach SHS. The four "Excellence Days" will occur once per term working with our highly skilled and dedicated Junior Secondary teaching team and student mentors.

Applications open at the start of each school year with information distributed to primary feeder schools.

CREST

Crest is an application-based program available for students in Year 7 who demonstrate optimal academic results in the areas of Maths, Science and Technology. This class of students will be selected of high achieving students in the areas of Maths, Science and Technology. This class will come off line twice a week to participate in extension activities and field trips. This program is only open to those students who successfully meet enrolment criteria (or successful in the Music or Surfing Programs of Excellence).

Applications open in Term 1 for students in Year 6. All information along with applications will be distributed to primary feeder schools.

PIPELINE

Pipeline is an application-based program that immerses 24 academically gifted students for a full day each term. Students will participate in four differently themed STEM activities explicitly focussing on the teaching of critical thinking and collaboration.

The purpose of the program is to immerse participants in experiences focussed on the wonder of science, the power of technology, the creativity behind engineering and the beauty of the mathematics that all help us to understand our ever-changing world.

Term 1 – Drone Discoveries
Term 3 – Raging Robots

Term 2 – Food Chemistry
Term 4 – Marine Magic

(Field trip to rocky shore ecology at Point Perry, Coolum)

Applications open early Term 1 for all students in Year 8. Applications will be distributed by the Deputy Principal.

DIFFERENTIATING STUDENT LEARNING – ENRICHMENT AND SUPPORT

Sunshine Beach SHS aims to provide for the needs of all students. Individual Curriculum Plans will be developed for students as necessary. Extension, enrichment and support for students may occur across all subject areas. Many subjects use online platforms to support students' home learning. Further, there are numerous projects, clubs, workshops and tutorials that students may engage in to deepen and extend their learning.

THE LEARNING PLACE & CLASS ONENOTE & MICROSOFT TEAMS

These online learning platforms are a one-stop-shop for access to digital resources from home. Students are encouraged to utilise the site to support the learning that takes place in the classroom. Students can enrol themselves in each of their courses to access unit outlines, home learning tasks and resources and assessment tasks. These files can be accessed from any internet connection at school or at home. Students and parents are strongly encouraged to regularly refer to these platforms as a valuable tool for learning and effective planning to meet home learning and assessment deadlines.

WIDE READING PROGRAM

Students in Junior Secondary utilise library facilities, resources and staff each week to engage in a Wide Reading Program – Literacy Pro. Students are encouraged to read 20 minutes each day be accessing a wide range of reading materials of their own choice. The goal is to read a minimum of 5 books a year. This program is designed to support and increase student literacy along with encouraging students to enjoy a book from cover to cover.

YEAR 7 TEAM BUILDING

Year 7 students will participate in a 1-day (on site) team building day to form and strengthen relationships between peers and teachers. Students will have the opportunity to participate in various activities including rock climbing, team building games, initiative challenges and survivor orienteering course. A BBQ lunch will be provided by our Student Engagement & Wellbeing team. Students are required to bring their own morning tea (and water bottle/school hat). There will be no cost for this day as the school will fully subsidise all activities. Permission notes and further information will be sent home early in Term 1.

YEAR 8 CAMP

It is the school's aim that all Year 8 students participate in the camp program. All students are strongly encouraged to attend this camp as it is part of the school curriculum and adds value to your child's educational program. All food is provided however students will be rostered to prepare, serve and clean up after meals under staff supervision.

Where possible, your child's core teachers will attend the camp. This provides an opportunity for the teachers to see first-hand how your child is settling into secondary school and building positive working relationships. The camp experience is designed to enable personal growth based on a lifestyle that promotes community effort. By working as part of a community, individual strengths and gifts are brought to the forefront allowing each person to build confidence and self-esteem while at the same time developing valuable life skills

The camp program focuses on 3 key elements:

1. Community – appreciating the importance of working together
2. Curriculum – learning through discovery and play
3. Self-sufficiency – developing a sense of confidence, independence and responsibility

These skills are developed through the below program that students will engage in over the 3 days and 2 nights.

Venue: Total Adventures - Noosa North Shore www.totaladventures.com.au
Cost: \$300 (tbc)

HOME LEARNING GUIDELINES

Home learning is designed to: consolidate learning develop time management skills, simulate interest in a topic, extend the student's learning, develop independent learning, assist with ongoing research and facilitate reading. In order to achieve the best results possible, it is important for students to develop a regular study routine that is organised and this is set in a quiet well-lit area away from distractions such as the television, music, conversation and social media. The use of technology is incorporated as one of many tools for learning. Experts recommend that a student/s computer and/or mobile device be loaned where parents can easily monitor usage. It is important that each family develops rules around appropriate use of technology. Students are to use the following as a general guide for the amount of time required for completing their home learning and/or revision each night:

	Per Lesson	Per Night	Per Week
Year 7	10 mins	40 mins	2 hrs 30 mins
Year 8	12-15 mins	50-60 mins	3 hrs 40 mins
Year 9	20 mins	1 hr 20 mins	5 hrs 30 mins
Year 10	25 mins	1 hr 40 mins	8 hrs 20 mins
Year 11 & 12	30 mins	2 hrs	10 hrs

REPORTING

Official reporting dates are an interim report at End of Term 1 followed by an End of Semester 1 and End of Semester 2 report. All official reports are emailed home in the last weeks of Term 1, Term 2 and Term 4. You can also access your child's level of achievement via their OneSchool student profile.

STUDENT LED CONFERENCES

Parents are encouraged to communicate with their child's teacher and school on a regular basis. This communication can be via telephone, email and formal or informal meetings. Effective communication with the school and teacher strengthens the partnership around the student. To encourage greater student involvement in discussion about their own learning, student led conferences are held twice during the year (at the start of Term 2 and Term 3). These evenings provide an opportunity for students, parents and teachers to discuss class work and activities and to peruse student/s work. It is also a great opportunity for parents and teachers to meet in person. Bookings are made directly by parents online and information regarding this process is emailed home with the student/s reports prior to these evenings. Additional meetings can be at any time throughout the year.

STUDENT LEADERSHIP TEAM

	Senior School Captains			Vice Captains / SRC Leaders		Junior School Captains			
Music Captains	Year 12 Sport Captain	Year 12 Community Captain	Year 12 Environmental Captain	Year 12 Cultural Captain	Year 9 Community Captain	Year 9 Environmental Captain	Year 9 Cultural Captain	Year 9 Sport Captain	
	Year 12 Banzai	Year 12 Mundaka	Year 12 Uluwatu	Year 12 Waimea	Year 9 Banzai	Year 9 Mundaka	Year 9 Uluwatu	Year 9 Waimea	
Student Council Representatives (all years)									

PROCESS FOR ELECTING ANNUAL STUDENT LEADERSHIP ROLES

	Senior Leaders	Junior Leaders	SRC Representatives
Term 1			
Week 1			
Week 2	Meetings begin: Odd weeks - SRC Even weeks - Sub Group meetings		
Week 3			Year 7 applications close Panel meets to review Year 7 applications Year 7 SRC reps announced
Week 4	Student Leadership Investiture		
Term 2			
Week 7	Hand out Year 12 applications	Hand out Year 9 applications	
Term 3			
Week 2	Applications close	Applications close	
Week 3	Panel meets to endorse applications	Panel meets to endorse applications	
Week 4	Checking referees	Checking referees	
Week 5	Finalise leadership nominations Applicants are notified and given project task	Finalise leadership nominations Applicants are notified and given project task	
Week 6	Year 11 camp	Checking referees	
Week 7	Short listing of leaders	Short listing of leaders	
Week 8	Interview with panel	Interview with panel	
Week 9	Speeches to staff and peers. Voting process Panel meet for selection	Speeches to staff and peers Voting process Panel meet for selection	
Week 10	Captains offered positions	Captains offered positions	
Term 4			
Week 1	Change over transition	Change over transition	
Week 2			Applications open
Week 3	Formal announcement of successful leaders at awards ceremony	Formal announcement of successful leaders at awards ceremony	Announcement of successful VC/SRC spokesperson at awards night with Senior captains
Week 4			Applicants close Panel meets to review and endorse applicants
Week 5			Applicants notified of outcome
Week 6			
Week 7	Announcement of House reps at House assembly	Announcement of House reps at House assembly	Announcement of SRC reps at assembly
Week 8	Last day of school		
Week 9	Workshop - Full Day with all leaders		

INTERNATIONAL STUDENT PROGRAM

BACKGROUND

Sunshine Beach State High School has been hosting International students since 2005. We started with 3 or 4 students and have grown now to our capacity - being 60 students each semester. The Study Abroad Program is very expensive and the students bring a lot of income to the school. Therefore, it is extremely important that we treat them well and work with them to achieve the best possible outcomes.

The students come to our school anywhere from 3 months to 4 years. The majority come for 6 months. The students who are here for 3 – 4 years are generally from the Asian countries and they continue on here through University.

The students are very enthusiastic and academically very bright. They have a great work ethic and in many cases, they require good grades for their schools back home. Some countries do not recognise what they do here but this does not seem to cause any issues as far as their work ethic.

WHERE DO THEY COME FROM?

The students come from the following countries:

Italy	Switzerland	Japan	Chile	Iceland
Germany	Thailand	Sweden	France	USA
Indonesia	Austria	Norway	Denmark	Vietnam
Mexico	Canada	China	Brazil	

WHAT YEAR LEVEL?

Students are mainly in Years 10, 11 & 12, however more recently we are enjoying students in Years 9 and more juniors in Years 7 & 8. Often the junior students are here with their natural parents and they are here for an extended period.

The students give our students the opportunity to learn about people from different cultures and some form lifelong friendships that continue well into adulthood.

It is a great opportunity for our students to learn and appreciate other cultures and to realise that there is a whole world out there to explore.

We really value the International students in our school and we embrace their knowledge and cultures.

“Every person is unique and has different beliefs, values, abilities, experiences, education and we may communicate differently.”



MUSIC EXCELLENCE PROGRAM

The Music Excellence Program at Sunshine Beach SHS demonstrates “Music theory into BEST practice” and consists of two streams: Music Extension and Music in Practice.

The **Music Extension** Program commences as a two-year course of music study, undertaken during Years 7 and 8 and available by application and audition. An integrated approach incorporating both Instrumental and Classroom music, the Music Extension Program focuses on academic excellence through extension studies in music theory (gaining external accreditation through the Australian Music Examinations Board) in addition to the study of musicology, composition and performance, as mandated in the Australian Curriculum. The Music Extension curriculum has been developed so that it integrates learning experiences within the Instrumental and Classroom Music programs and mandates participation in the Performance Music Program as a co-requisite to joining the Music Extension Program. This means that students must be active members of the school ensemble program, attending all instrumental and/or vocal lessons and taking part in all performances.

In Years 9 & 10, Music Extension students continue by choosing ‘Music Extension’ as an elective subject. This continues their academic music studies, building high-level skills in composing, performing and analysing music. Students also develop skills in using music technology to create and present their music. This segues into QCAA ‘Music’ in Year 11 & 12, contributing towards their ATAR score. Students may also choose QCAA ‘Music Extension’ as an additional study in Year 12.

The **Music in Practice** stream commences as a one-term elective in Year 8, studied by all students not in the Music Extension classes. This short course introduces students to music elements and concepts, and develops basic skills in performance and composition. In Years 9 & 10 students can choose ‘Music in Practice’ as an elective, focusing more on contemporary music styles, performance and technologies. This leads into the applied QCAA subject “Music in Practice” in Years 11 & 12. This may also contribute to the ATAR score depending on the combination of subject choices.

It is possible for students to move between streams at key juncture points.



SURFING EXCELLENCE PROGRAM

The Surfing Excellence Program is implemented through three separate classes for Year 7/8 combined, Year 9/10 combined and Year 11/12 combined. Entry into the program can begin at any year level, however entry is by application only and numbers are restricted for each class. The Year 7/8 program runs outside of the curriculum as an introduction to the course, while students in Year 9 and above have the option to select the subject as an elective option.

The Excellence in Surfing Program is more than a series of physical training sessions and high performance coaching. Students involved in the program are required to attend sports related theory sessions from Year 9 and above to develop key performance measures. Surfers develop an extensive knowledge, including fitness development, technical analysis, tactical preparation, organizational skills, judging, marketing and managerial aspects of the sport. Sunshine Beach High's holistic approach to surfing excellence coaching definitely assists developing resilient, resourceful, determined and globally aware young adults.

The program is conducted using both our school teachers who have extensive knowledge, experience and passion with the relevant accredited qualifications to run a high performance course. The teachers are also supported with high performance coaches who are employed by the school, therefore the subject has additional costs that must be met in order to remain in the program.

The primary aim of the Excellence in Surfing Program is to equip students for success in life through the sport of surfing. The Excellence in Surfing Program has been developed due to the popularity of surfing in our school region. The overall objective of the program is not simply to develop skilled surfers within the key performance measures (technical, tactical, mental preparation, equipment, competitive plan and physical fitness) but also the education of students regarding employment in the industry, personal development and strategies of hard work and determination for success.

Students graduating from our Excellence in Surfing Program are well equipped to pursue careers in local and international surf related industries such as Surf Lifesaving in Australia and overseas, Level 1 and Level 2 Surf Coaching, local and international surf guiding with established surf tour companies. Sunshine Beach State High School believes the significance of surfers creating genuine career pathways through participation in sport cannot be overlooked. When current students observe past surfing excellence students working successfully in an appealing "lifestyle" career, there exists a powerful and positive link between school and community. The nature of coaching students in a public environment provides a valuable opportunity for students to represent their school in a highly respectful manner which they consistently achieve. This ownership and investment in the Surfing Excellence Program from all motivated individuals forges a strong link between our school and the community.



DUKE OF EDINBURGH PROGRAM

Students at Sunshine Beach State High School are encouraged to participate in the prestigious and internationally recognised Duke of Edinburgh's Award. The Award is designed to support the development of young leaders in our community, focusing on goal setting, perseverance, responsibility and contributions to our community. Prospective employers and universities merit the differential this award provides individuals when applying for places or interviews, there is always a story to be recalled and shared!

The award is structured in three tiers: Bronze, Silver and Gold - each with progressively increasing time requirements. To complete any level of these Awards, students must show commitment to four key sections.

- Community Service Volunteer service within our community.
- Physical Activity Participate in activities to improve & maintain fitness.
- Skill Learn a challenging skill that requires commitment.
- Adventurous Journey Discover new surroundings and develop a sense of adventure.

At Sunshine Beach State High School we offer close support, guidance and encouragement to assist our students to complete each level. Students are unrestricted in the design of their own program, doing the things they might already be participating in and that interest them the most. Popular activities with our current students include surf lifesaving/nippers, diving, sporting teams, home cooking, learning to drive, mountain biking, art, archery and many, many more; the list is only limited by your imagination.

The Adventurous Journey section involves overnight stays away from everyday comforts. Each year we help students organise overnight camps in our local areas where we hike, canoe and camp in tents. Past journeys have included exploring the upper reaches of the Noosa River system by kayak, hiking through the Noosa National park and forest and exploring the Mary Valley and learning about its ancient Aboriginal history and its surrounding river system and pastoral lands.

Importantly, completion of the Duke of Edinburgh levels also qualifies students to earn QCE (Queensland Certificate of Education) points. It is possible for students to earn four points towards their QCE certificate by completing all three levels of the Award; equivalent to one whole subject.

We look forward to signing you up soon



CELEBRATING SUCCESS

The school celebrates student achievements in some of the following ways:

In addition to School assemblies, the **FLOURISH** newsletter is issued twice per term and the **SHINER** magazine is published at end of Semester 1 and end of Semester 2.

Lunch with the Stars

Once a term, Year 7 scholarship recipients alongside students who have achieved high results academically will be invited to a celebratory lunch with key staff from the Junior School. We firmly believe in acknowledging the quality efforts of our students and this tradition enables a time to celebrate with fellow students.

Green Room Master Class

In Term 4 Year 10, excelling students are invited into the Green Room Master Class. This is an excellence program to equip students with key skills for Year 11. Opened to all Year 10 students (current and future Year 11 students) willing to participate in focused master classes held by experienced teachers, and have completed their Careers Certificate II in Work Skills. Lessons focus on core skills needed for success in Senior subjects.

Awards Ceremonies

In Term 4, we recognise student excellence at the following events:

- Academic Awards
- Sports Awards
- Arts Extravaganza
- Music Showcase





JUNIOR SECONDARY SUBJECTS

Year 7 & Year 8

Year 7	Mathematics Science English Humanities	Grammar time Health & Physical Education Italian #Connections	Drama Dance Design & Technology (Industrial design focus) Digital Technology
Year 8	Mathematics Science English Humanities	Grammar time Health & Physical Education Italian #Connections	Music Design & Technology (Food focus) Digital Technology

MIDDLE SECONDARY SUBJECTS

Year 9 & Year 10

Subjects below are open to change each year considering student demand and staffing qualifications. Current and more detailed information can be found here at the school website:

[Subject Areas](#)

Year 9	Mathematics Science English Humanities Grammar time Health & Physical Education #Connections	Electives – 2 per semester Visual Arts Dance Media Arts Drama Music Graphics & Design Italian Food Studies Textiles & Design Early Childhood Practices Business Studies Engineering Technology & Design ITD Passion Project Surfing Excellence Digital Technology
Year 10	Design & Technologies	Design Early Childhood Studies Engineering Prep for VET Fashion Food & Nutrition Furnishing Skills Prep Hospitality Practices Industrial Graphics
	English	English * Literature
	Health & Physical Education	Excellence in Surfing Fitness Prep for VET Health Physical Education Psychology Recreation
	Humanities	Ancient History Business Geography Legal Studies Modern History Philosophy
	Languages	Italian
	Mathematics	General Maths * Maths Methods Maths Specialist
	Science	Biology Chemistry Earth & Environmental Science Marine Science Physics
	Technology	Digital Solutions
The Arts	Dance Drama Film, Television and New Media Media Art Music Visual Art Creative Arts Prep for VET	

SENIOR SECONDARY SUBJECTS

Year 11 & Year 12

Subjects below are open to change each year considering student demand and staffing qualifications. Current and more detailed information can be found here at the school website:

[Senior Subject Selection Booklet](#)

Year 11 & Year 12	Design & Technologies	Design Engineering Fashion Food & Nutrition Furnishing Skills Hospitality Practices Industrial Graphics Skills Certificate II Automotive Vocational Prep Certificate IV in Crime & Justice Certificate III Early Childhood Education & Care Certificate II Engineering Pathways Certificate II Plumbing
	English	Essential or General English * Literature English Literature Extension (Year 12 only)
	Health & Physical Education	Excellence in Surfing Cert III Fitness Health Physical Education Psychology Sport & Recreation
	Humanities	Ancient History Business Geography Legal Studies Modern History Philosophy & Reason Tourism
	Languages	Italian
	Mathematics	Essential Maths or General Maths * Maths Methods Maths Specialist
	Science	Aquatic Practices Biology Chemistry Earth & Environmental Science Marine Science Physics
	Technology	Digital Solutions Information and Communication Technology
	The Arts	Dance Drama Film, Television and New Media Music Music Extension (Composition / Musicology or Performance – Year 12 only) Visual Art Certificate III Visual Art

STUDY GROUP & TUTORIALS

Free tuition for Junior, Middle and Secondary is offered weekly from 3 pm to 4 pm in the area of English, Science and Mathematics. During study group, students will have the opportunity to receive tutoring from their teachers around homework, assignments, upcoming exams, extension activities and general assistance. Students can attend at a frequency supported by their parents. Students will be advised of times and days at the beginning of each term.

Senior tutorials are held in the Resource Centre, from 1.50 pm to 2.50 pm each day. These are available to all senior students across the full range of subjects. Students will be advised of times and days at the beginning of each term.



Our Positive Classroom Behaviours are:

**Be
Responsible**

**Be
Safe**

**Be
Respectful**

**Be
Productive**

STUDENT CODE OF CONDUCT

Refer to Student Code of Conduct on School website.

<https://sunshinebeachhigh.eq.edu.au/SupportAndResources/FormsAndDocuments/Documents/Admin/Student-Code-of-Conduct.pdf>

POSITIVE BEHAVIOURS

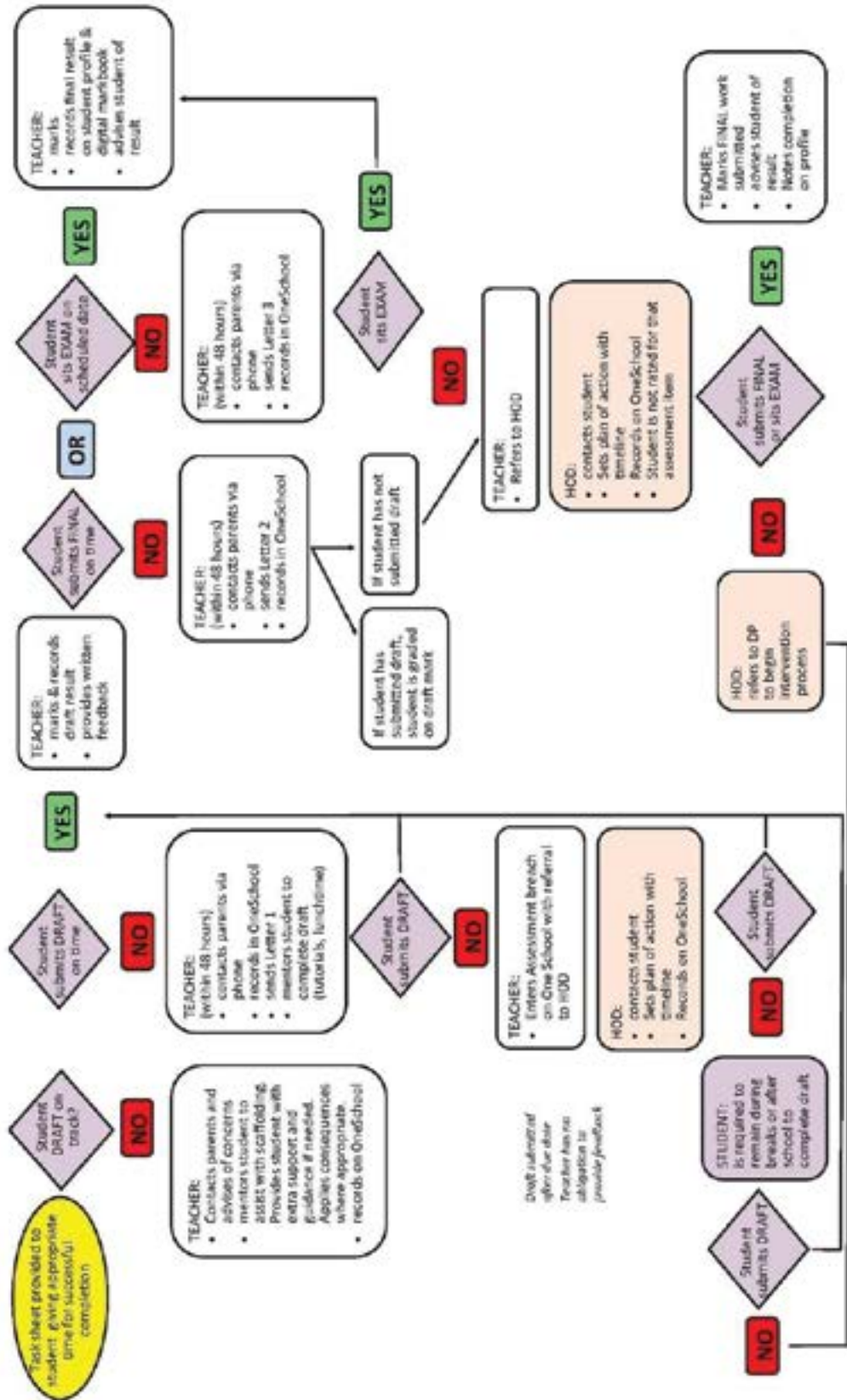
<p>BE RESPONSIBLE</p> <ul style="list-style-type: none"> • Wear school uniform according to the school uniform policy • Model positive and proactive behaviours in the classroom playground and school community • Attend school regularly and be prepared to take part in school activities • Represent the school with pride • Support your peers to make good choices 	<p>BE RESPECTFUL</p> <ul style="list-style-type: none"> • Treat all people in a polite and courteous manner • Take pride and value yourself, our achievements and your school • Maintain positive behaviours when in school uniform • Resolve conflict and disagreement without verbal or physical aggression • Respect others personal space and property
<p>BE SAFE</p> <ul style="list-style-type: none"> • Make safe choices • Use all school equipment in an appropriate manner • Have a positive influence on potential incidents in the school environment • Represent the school with pride • Keep dangerous or banned items out of school grounds 	<p>BE PRODUCTIVE</p> <ul style="list-style-type: none"> • Participate in all learning activities to the best of your ability • Complete all set tasks to the best of your ability • Contribute to a positive classroom environment • Be persistent and determined in working towards a positive solution • Recognise difficulty as an opportunity to grow and learn



ASSESSMENT POLICY

Refer to School Assessment Policy on School website.

<https://sunshinebeachhigh.eq.edu.au/SupportAndResources/FormsAndDocuments/Documents/Admin/Assessment-Policy.pdf>



UNIFORM POLICY

The Parents & Citizens' Association, which represents the parents of the school, determined that Sunshine Beach State High School would be a uniform school. The advantages of wearing a school uniform include developing a sense of belonging to a group, pride in membership of that group, identification of students and equity. As a part of the enrolment process all parents and students have agreed to the wearing of the full school uniform when signing the Sunshine Beach High Enrolment form.

AVAILABILITY

Our uniform shop is now through The School Locker (TSL) at Maroochydore. To purchase uniforms, you have two options:

1. Visit the store in person - Homemaker Centre Maroochydore
2. Order online www.theschoollocker.com.au

DRESS CODE

1. The complete school uniform is to be worn to and from school, during school hours, and for other school occasions. The formal school uniform (unless specified) must be worn on school excursions and assembly days.
2. Shorts are available for both boys and girls.
3. Sports uniform is allowed to be worn all day on days that students have HPE/SPORT. The sports uniform is the year level polo shirt with sports shorts or skirt and athletic bike pants.
4. Specialised sport shoes of any colour / type may be worn with the sports uniform during HPE classes and sports activities. However, students must change into black school shoes at the end of session.
5. Footwear for day uniform is predominantly black, fully enclosed shoes, with flat soles. Black laces and white socks are to be worn with these shoes.
6. Hair is to be kept clean and well groomed; hair accessories are to be school colours. Unnatural coloured hair dyes and designs are NOT permitted.
7. Jewellery should be kept to a minimum. Watches may be worn. Two pairs of sleepers or studs may be worn in ears. One finger ring may be worn. Stretchers are not permitted, where applicable solid plugs must be worn.
8. Tattoos must be covered with a skin coloured stocking/bandage so they are not visible.
9. One small, discrete (flat) nose piercing is permitted.
10. Facial piercings must be removed, covered with tape or replaced with a clear stud.
11. Nail polish and excessive make up are not to be worn.
12. Compulsory school hat/cap to be worn for Years 7 & 8. In Years 7 & 8: "NO HAT, NO PLAY" Those students without a hat are to play in shaded areas. Years 9 - 12 are encouraged to wear the school hat/cap.
13. Skirts and shorts should be worn at the purchased length and are not to be altered. School name must be visible on hemline and position of school name cannot be altered.
14. School track pants can only be worn with the sport polo and shirt.

UNIFORM DESCRIPTIONS

Education Department and Workplace Health and Safety requirements require students' footwear to provide adequate protection and cover the entire foot. Footwear such as thongs, sandals and ballet flats are not acceptable and are NOT to be worn.

Shoes: Plain fully enclosed, predominantly black shoes or boots (approximately ankle height) with flat soles. High top DOC MARTINS ARE NOT ACCEPTABLE. Sport shoes of any colour/ type may be worn during HPE and specialised sporting activities only.

Socks: Plain white (must be visible).

Hat: A compulsory school bucket hat/cap is to be worn in Years 7 & 8.

Please note that in support of our School Uniform Policy, students in Junior Secondary grades are to wear the reversible school hat (navy with a reversible house colour). Students will be allocated to their sporting house based on their sibling/s placements (same house will be allocated) or their preferred surname (as on their enrolment forms).

A-F: BANZAI (red) E-L: MUNDAKA (purple)

M-R: ULUWATU (green) S-Z: WAIMEA (blue)
To be confirmed with TSL upon purchase of uniform

Please note that the previous procedure is implemented when all houses have the same number of students. When this limit is reached, some students may be allocated in the house with the least students until they match the other houses.

Bandannas/beanies are NOT permitted. As is normal custom in the community, hats of any kind are not permitted to be worn inside.

INCORRECT UNIFORM

If a student is unable to wear the correct uniform, they are required to see their year level Deputy Principal for a uniform pass. The Deputy Principal will negotiate a time with the student for the item to be corrected. Should there be any financial hardship that impacts upon a student wearing the correct uniform, parents are requested to contact their child's Deputy Principal to discuss.

If a student presents in an incorrect item of uniform, it is expected that they will produce the uniform pass issued by the Deputy Principal. If this cannot be done, then the teacher records on IDAttend the uniform infringement. Heads of Year will follow up the infringements and the student will receive an official warning by their Head of Year which will be recorded on their file. The Head of Year will negotiate with the student a timeframe for the items to be corrected and contact the parent. If the item is not corrected by the agreed time, the student will be issued with a detention for not following the uniform policy.





QUALITY IN ALL WE DO

SCHOOL UNIFORM

GIRLS FORMAL BLOUSE YEARS 7-10
White short-sleeved blouse with green leaf pattern.

GIRLS FORMAL BLOUSE YEARS 11 & 12
White short-sleeved blouse with green tie and pocket.

GIRLS FORMAL SKIRT ALL YEARS
Dark blue pleated skirt.

GIRLS FORMAL SHORTS ALL YEARS
Dark blue shorts.

GIRLS FORMAL CROSSOVER TIES
Dark blue and green crossover ties.
YEARS 7 & 8
YEARS 9 & 10
YEARS 11 & 12

BOYS FORMAL SHIRT YEARS 7 & 8
White short-sleeved shirt with green pocket.

BOYS FORMAL SHIRT YEARS 9 & 10
White short-sleeved shirt with green pocket.

BOYS FORMAL SHIRT YEARS 11 & 12
White short-sleeved shirt with green pocket.

BOYS FORMAL SHORTS ALL YEARS
Dark blue shorts.

COMPULSORY FORMAL UNIFORM
www.theschoollocker.com.au | Sunshine Beach High School

School Locker

WINDY PULLOVER JACKET ALL YEARS
Blue and green pullover jacket.
Price: \$29

TRICK JACKET ALL YEARS
Blue and green trick jacket.
Price: \$29

TRICK PANTS ALL YEARS
Dark blue trick pants.

GIRLS BOY PANTS ALL YEARS
Dark blue shorts.

SPORTS SHORTS ALL YEARS
Dark blue shorts.

BUCKET HAT ALL YEARS
Dark blue bucket hat.

CAP ALL YEARS
Dark blue cap.

REVERSIBLE HOUSE COLOURED BUCKET HAT ALL YEARS
Purple, green, blue, and red bucket hats.

SPORTS POLO YEARS 7 & 8
Blue and green polo shirt.

SPORTS POLO YEARS 9 & 10
Green polo shirt.

SPORTS POLO YEARS 11 & 12
Blue and green polo shirt.

COMPULSORY SPORT UNIFORM
www.theschoollocker.com.au | Sunshine Beach High School

School Locker

STUDENT RESOURCE SCHEME

The Queensland Government supports students' education by providing funding for:

- Instruction e.g. teachers
- Facilities e.g. buildings, amenities, furniture
- Administration e.g. staffing and resources to administer the operations of the school.

Funding does not extend to individual student resources such as textbooks, computer or musical equipment for personal use, and many items used/consumed by the student in the classroom. Supply of these items is the responsibility of parents.

To provide parents with a cost effective alternative to purchasing textbooks and/or resources elsewhere, Sunshine Beach State High School operates a SRS for 2021.

The scheme ensures that students have the resources required for them to engage with the curriculum for their education, and saves parents time and money in sourcing the prescribed materials elsewhere. Savings are gained through the school's bulk purchasing practices and hiring arrangements. The scheme is not used to raise funds for other purposes, and revenue collected through the scheme is applied only to the resources and operation of the scheme. The scheme's operation, resource inclusions and participation fees were approved by the school's P&C Association.

SRS Participation

The objective of the scheme is to provide a convenient and cost-effective way for students to access the educational resources necessary to enhance their learning experience at school. The Department encourages parents to participate in the scheme. Participation in the SRS is optional, and no obligation is placed on a parent to participate. Participation is for the duration of your child's enrolment at the school.

Student is new to the school....

Parents are required to complete and return the SRS Participation Agreement Form when joining the scheme for the first time. If no participation form is received, the school will take the view that the parent has chosen to opt out of the SRS. The parent is then required to provide the educational resources listed in the SRS for their child by the start of the school year. A parent can opt in or out of the scheme in subsequent years by completing another Participation Agreement Form.

Continuing student of the school....

A parent's participation or non-participation in the scheme will continue as per their previously completed Participation Agreement Form. A parent can opt in or out of the scheme in subsequent years by completing another Participation Agreement Form. If a parent has opted out of the scheme the parent is required to provide the educational resources listed in the SRS for their child by the start of the school year.

Resource Inclusions

All resources included in the SRS are detailed in the SRS Resource list available on the school's website www.sunshinebeachhigh.eq.edu.au. This is a comprehensive list of all resources included in the scheme and their associated costs. Parents must inform the school if items on the list of resources are not received by their child when resources are distributed.

Type of Resources provided

Generally, the three types of resources that could be included are:

- **Owned** – these items are retained by the student and used as required (e.g. stationery, exercise books, student diary).
- **Used** – these items are used/consumed in class by the student (e.g. industry technology/ cooking/art supplies).
 - work/items produced from these resources will remain the property of the student.
- **Hired** – these items are hired to the student for their personal use for a specific period of time (e.g. textbooks, musical instruments, laptops).
 - Hired items must be returned to the school in good condition at the end of the hire period or if the student leaves the school.

A repair or replacement cost may be charged to the parent for any hired items that are damaged or not returned.

Costing Methodology

The schools SRS fee is calculated based on:

1. A flat fee for all students in the school, OR
2. A flat fee for a cohort group of students (e.g. a year level), OR
3. A fee determined by the subjects selected by the individual student.

Please refer to the SRS Resource list for the associated costings.

The Textbook and Resource Allowance

The Department of Education provides a Textbook and Resource Allowance (TRA) to assist parents with the cost of textbooks and other education resources for eligible Years 7 to 12 students. For those students who are eligible to receive the TRA, the TRA will be applied to reduce the cost of participation in the SRS. Information on the TRA can be found on the department's website.

<https://education.qld.gov.au/about-us/budgets-funding-grants/grants/parents-and-students/textbook-resource-allowance>

Year Level	TRA Rate	Year Level	TRA Rate
Years 7 to 10	\$130	Years 11 to 12	\$281

The SRS Participation Fee

The SRS fee payable for the year is \$280.00 – detailed in the Resource Requirements document published on the school's website.

Financial Hardship

Parents experiencing financial hardship who are currently participating or wish to participate in the SRS should contact the school to discuss available options in confidence.

Payment Arrangement

Several payment options including a single payment for the full year's fee or term instalments are available. An instalment plan can also be negotiated with the school.

Any unpaid invoices, will be managed according to the department's Debt Management Procedure and may result in the student being excluded from the scheme and/or from participating in non-curricular activities until payment is made

(<http://ppr.det.qld.gov.au/corp/finance/accounts/Procedure%20Attachments/debt-management/debt-management.pdf>)

Payment Method:

SRS payments can be made by QParents/BPOINT, BPAY, EFTPOS (Credit/Debit Card), Cheque, Cash, Centrepay.

- Payment may be made through the QParents portal using a credit card. Payment will be directed from the QParents portal to BPOINT where relevant outstanding invoice information may be selected.
- When paying by BPOINT, please use the Customer Reference Number (CRN) and invoice number printed on the invoice received from the school. If unsure of the CRN, please contact the school.
- Centrepay Deductions are available to pay the SRS fees. Use Centrepay to make regular deductions from your Centrelink payment. Centrepay is a voluntary and easy payment option available to Centrelink customers. Go to humanservices.gov.au/centrepay for more information on how to set up your Centrepay deductions.

Contact Us

For all queries regarding the SRS and its inclusions, please contact and arrange an appointment with Business Manager, Finance on 07 5440 4222.

ELECTRONIC DEVICE AGREEMENT

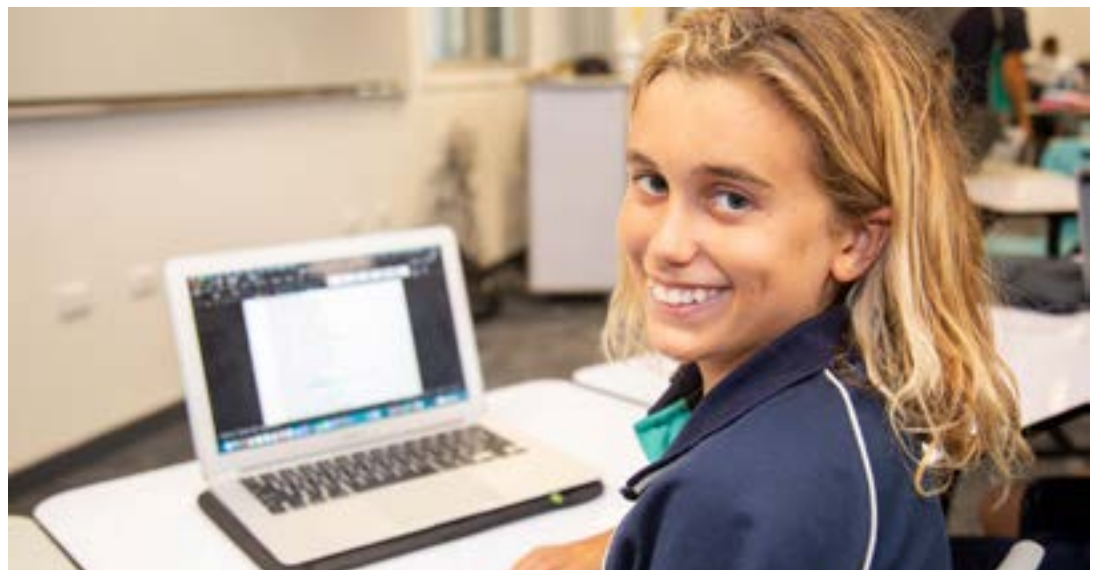
Many students bring mobile phones to school for logical reasons including personal safety whilst in transit, and communication with parents/guardians and employers. A small number of students misuse their mobile phones or other electronic device by staging student interaction and placing the photo/footage on social network sites. As Australians, we have a right to the privacy of communications and freedom from surveillance.

1. Though this policy, our intention is to protect the privacy of all persons on our campus.
2. Students are permitted to have a mobile phone or other electronic equipment in their possession at school. However, the phone, electronic device and headphones must be switched off during all class and assembly times.
3. Students who breach the condition in (1) above will have the phone confiscated.
4. The telephone in the student foyer is available on request to all students who need to make an urgent phone call.
5. A mobile phone/personal device may be used with teacher permission if directly related to the learning at that point in time.
6. Confiscated phones (for misuse) will need to be collected from the Deputy Principal at 1.40pm or 2.50 pm (senior/junior student finish time).
7. Any student caught using the camera device of a mobile phone will have the item confiscated and the student will be suspended for a period deemed appropriate (unless this is part of the curriculum delivery).
8. Students are not to have personal cameras of any description in their possession at school unless they have the express permission of a teacher, Head of Department or member of the Administration team.
9. Individually owned devices cannot access the EQ network and relevant software/internet of the school.

BYOD (Bring Your Own Device)

It is expected that most students in Year 7-12 will have transitioned to the BYOD model where they are encouraged to bring their own personal laptop to school each day. There will be limited devices for students in Years 7 to 12 to access daily. All details about the BYOD and school laptop programs can be found on the school website.

It is the student/s responsibility to ensure the laptop is kept safe and secure to prevent damage. The School cannot accept responsibility for lost or damaged devices.



Take this sheet with you when purchasing a device.

Hardware and Software Minimum Specifications - BYOD

The School recommends that all BYO devices used by students meet the minimum specifications below to enable suitability for curriculum-based activities.

The minimum specifications provided reflect the requirements for connection to the BYOD Gateway. School ICT technicians will make every effort to enable connectivity of devices which meet these minimum specifications, assuming there are no technical or other issues outside of their control. An attempt will be made to connect other devices, but parents and students should be aware that connectivity may not be possible if there are technical or other issues.

** Student subject choices and interests should be considered when deciding whether to purchase a Windows or Apple device.

(SBSHS cannot recommend what brand or what type of device you buy but can assist with your questions)

Year 7 - 12 Device Specifications	
Minimum Specifications Standard Device	
<p>HARDWARE PC LAPTOP</p> <ul style="list-style-type: none"> • 11" screen • Intel Dual Core or AMD equivalent • 8Gb RAM • 128 Gb Storage • 2 USB ports • Wi-Fi Dual Band (school only uses 5GHz) • Integrated speakers and microphone with headphone ports (standard in laptops) • US Keyboard with full size keys within the footprint • Touchpad or Mouse • Windows 10 OS • 6 hour battery • Hard or protective shell laptop case to suit model. <p>HARDWARE MAC LAPTOP</p> <ul style="list-style-type: none"> • Must be running the latest OSX (operating system) • Mac devices and their applications are update dependent. Provided the Mac is capable of running the latest Mac updates it will be compatible with our BYOD Network. 	<p>HARDWARE PC LAPTOP</p> <ul style="list-style-type: none"> • 13" screen • Intel Processor i5 or AMD equivalent • 8Gb RAM • 256 Gb Storage • 2 USB ports • Wi-Fi Dual Band (school only uses 5GHz) • Integrated speakers and microphone with headphone ports (standard in laptops) • US Keyboard with full size keys within the footprint • Touchpad or Mouse • Windows 10 OS • 6 hour battery • Hard or protective shell laptop case to suit model. <p>HARDWARE MAC LAPTOP</p> <ul style="list-style-type: none"> • Must be running the latest OSX (operating system) • Mac devices and their applications are update dependent. Provided the Mac is capable of running the latest Mac updates it will be compatible with our BYOD Network.
<ul style="list-style-type: none"> • For Media studies consider a 512Gb Hard drive storage or larger. • Chrome Books are not supported • Linux OS not supported 	
Software	
<ul style="list-style-type: none"> • Microsoft Office 365 - Available for downloads from: Microsoft Office • PDF Reader • Antivirus Internet Security (Free or paid subscription) • Specific software may be required for your subject selection – check with your teacher 	
<p>** Information will be provided to students who require specialised software on how to download it and/or licencing.</p>	

Please contact our IT Technicians if you require further guidance prior to your purchase on 5440 4273.



FIRST DAY PROCEDURES

Welcome to Sunshine Beach State High School.

All students will follow the procedure as outlined below.

Start date: New students usually commence on Monday of each week.
Your start date is _____

Arrival Time: Years 7 to 10 – 8.30 am Years 11 to 12 – 8.10 am

Where: Administration Building

Who: You will be met by your Head of Year (HOY) _____
who will

- welcome you to our school
- explain your timetable to you
- take you to your first lesson
- introduce you to your buddy

What to bring on your first day: 4 x A4 lined books, water bottle, lunchbox, hat and laptop

Finish Time: Years 7 to 10 – 2.50 pm Years 11 to 12 – 1.40 pm

TRANSPORT

For all transport inquiries, please contact



Email

info.sunshinecoast@cdcbus.com.au

Telephone

(07) 5476 6622

Address

11 Page Street, Kunda Park, QLD 4556



QUALITY IN ALL WE DO



A series of horizontal lines spanning the width of the page, intended for writing.

QUALITY IN ALL WE DO



45 Ben Lexcen Drive
SUNSHINE BEACH QLD 4567

T
F
W
E

07 5440 4222
07 5440 4200
www.sunshinebeachhigh.eq.edu.au
admin@sunshinebeachhigh.eq.edu.au
CRICOS No. 00608A
ABN 92 149 243 186