



Drylac®  
Powder Coatings

# Super Durable

Super Durable Powder Coatings | Volume 2



# Vol. 2

**TIGER Drylac® Series 38/138** is available in smooth glossy finish (*gloss level 80-95*) in the following RAL colors as standard-products and custom-products (*minimum order quantity applies*). Please contact **TIGER Drylac®** for more information:

RAL color   Product ID	RAL color   Product ID	RAL color   Product ID	RAL color   Product ID	RAL color   Product ID	RAL color   Product ID
RAL 1001   38/15001 138/15001	RAL 6001   38/50005 138/50005	RAL 6029   38/50029 138/50029	RAL 7030   38/70027 138/70027	RAL 8008   38/60008 *138/60008	
RAL 1002   38/20002 138/20002	RAL 6003   38/50003 138/50003	RAL 6032   38/50032 138/50032	RAL 7031   38/70031 138/70031	RAL 8011   38/60011 138/60011	
RAL 1013   38/10013 138/10013	RAL 6004   38/50004 138/50004	RAL 6033   38/50033 138/50033	RAL 7032   38/70001 138/70001	RAL 8012   38/60012 138/60012	
RAL 1014   38/15014 138/15014	RAL 6005   38/50002 138/50002	RAL 6034   38/50034 138/50034	RAL 7033   38/70033 138/70033	RAL 8014   38/60010 138/60010	
RAL 1015   38/15015 138/15015	RAL 6006   38/50006 138/50006	RAL 7000   38/70000 138/70000	RAL 7035   38/70035 138/70035	RAL 8016   38/60016 138/60016	
RAL 1016   38/20016 138/20016	RAL 6007   38/50007 138/50007	RAL 7002   38/70007 138/70007	RAL 7036   38/70036 138/70036	RAL 8017   38/60017 138/60017	
RAL 1019   38/15019 138/15019	RAL 6008   38/50008 138/50008	RAL 7004   38/70004 138/70004	RAL 7037   38/70037 138/70037	RAL 8019   38/60019 138/60019	
RAL 1020   38/20020	RAL 6009   38/50009 138/50009	RAL 7005   38/70005 138/70005	RAL 7038   38/70038 138/70038	RAL 8022   38/60022 138/60022	
RAL 1024   38/20024 138/20024	RAL 6011   38/50011 138/50011	RAL 7006   38/70006 138/70006	RAL 7039   38/70039 138/70039	RAL 8024   38/60024 138/60024	
RAL 3012   38/30012 138/30012	RAL 6012   38/50012 138/50012	RAL 7009   38/70009 138/70009	RAL 7040   38/70046 138/70046	RAL 8025   38/60025 138/60025	
RAL 5004   38/40004 138/40004	RAL 6013   38/50013 138/50013	RAL 7010   38/70014 138/70014	RAL 7042   38/70042 138/70042	RAL 8028   38/60028 138/60028	
RAL 5007   38/40007 138/40007	RAL 6016   38/50016 138/50016	RAL 7011   38/70011 138/70011	RAL 7043   38/70043 138/70043	RAL 9001   38/10001 138/10001	
RAL 5008   38/40008 138/40008	RAL 6017   38/50017 138/50017	RAL 7012   38/70012 138/70012	RAL 7044   38/70044 138/70044	RAL 9002   38/10002 138/10002	
RAL 5011   38/40011 138/40011	RAL 6018   38/50018 138/50018	RAL 7013   38/70013 138/70013	RAL 7045   38/70045 138/70045	RAL 9003   38/10003 138/10003	
RAL 5013   38/40013 138/40013	RAL 6019   38/50019 138/50019	RAL 7015   38/70015 138/70015	RAL 7046   38/70002 138/70817	RAL 9004   38/80004 138/80004	
RAL 5017   38/40017 138/40017	RAL 6020   38/50020 138/50020	RAL 7016   38/70016 138/70016	RAL 7047   38/70047 138/70047	RAL 9005   38/80010 138/80010	
RAL 5018   38/40020 138/40020	RAL 6021   38/50021 138/50021	RAL 7021   38/70021 138/70021	RAL 8001   38/60005 138/60005	RAL 9010   38/10004 138/10004	
RAL 5019   38/40019 138/40019	RAL 6022   38/50022 138/50022	RAL 7022   38/70022 138/70022	RAL 8002   38/60002 138/60002	RAL 9011   38/80001 138/80001	
RAL 5020   38/40018 138/40018	RAL 6026   38/50026 138/50026	RAL 7023   38/70023 138/70827	RAL 8003   38/60003 138/60003	RAL 9016   38/10010 138/10010	
RAL 5021   38/40021 138/40021	RAL 6027   38/50027 138/50027	RAL 7024   38/70024 138/70024	RAL 8004   38/60004 138/60004	RAL 9017   38/80017 138/80017	
RAL 6000   38/50000 138/50000	RAL 6028   38/50028 138/50028	RAL 7026   38/70026 138/70026	RAL 8007   38/60007 138/60007	RAL 9018   38/10018 138/10018	

\* Aprx to RAL 8008

### TIGER Drylac® Color Cards

Additional **TIGER Drylac®** Color Cards include: 3D Metallics, RAL Colors + Textured and Smooth, Metallics & Special Effects, Kiosk Color Card, Navy, CARC<sup>1</sup>, Agriculture, Construction & Earth Moving Equipment (ACE)<sup>2</sup> and Series 29<sup>2</sup>.

#### Disclaimer

Color swatches featured in this document have been matched to color standards at a **45-degree visual angle under a D65 Daylight** primary source. RAL numbers are matched closely to the RAL Standards. Gloss level on metallic and fine textured swatches cannot be accurately measured.

Color swatches are considered as an indicator only. In practice, discrepancy between the color swatch and the actual powder coating may be present due to: paper and ink limitations, the influence of light and heat during the color swatch production, gloss level, substrate, surface variation, binder and pigment systems, coating thickness or cure oven conditions used during application. For better accuracy of color and finish, it is recommended to obtain a powder coated sample panel from **TIGER Drylac®**.

Semi transparent colors require a durable primer chemistry. Please contact **TIGER Drylac®** if using the following products in a two-coat system consisting of a primer or e-coat base coat: **TIGER Drylac® 38/90080 Brilliant Sparkle Silver** and/or **TIGER Drylac® 38/99999 Bengal Silver**.

**TIGER Drylac® Super Durable** products with a **fine texture finish** are recommended for use with a base coat primer.

<sup>1</sup> Must be a qualified applicator to order.

<sup>2</sup> Digital color card only. Visit TIGERs website to download.

## Super Durable powder coatings for exterior and interior applications

**TIGER Drylac®** features a full line of **Super Durable** high-performance powder coatings intended for architectural applications such as metal façades, steel construction, stadium seating, railings, residential window & door frames and more. **TIGER Drylac® Super Durable** products are also suitable for applications where extreme weather resistance is required such as agricultural & construction equipment, military (Army and Navy) equipment, communication towers, playground equipment, patio furniture and garden equipment.

**Please note the following TIGER Drylac® series include Super Durable products:**

Series 38	Super Durable polyester
Series 138	Super Durable TGIC-Free polyester
Series 61	Super Durable Anodized Effect polyester TGIC-Free
Series 68	3D Metallic, Super Durable TGIC-Free polyester

### NEW - Series 138

**TIGER Drylac® Series 138** are **TGIC-Free Super Durable** powder coatings with “Flex Cure” a uniquely designed flexible curing technology to accommodate a quicker crosslinking of the chemistry. **Series 138** powder coatings feature reliable performance characteristics favorable to **Series 38 Super Durable** formulations.

### TIGER Shield system

This two-coat system consists of a corrosion protective primer as a base coat and an opaque weather resistant topcoat. It is used to achieve excellent corrosion resistance in harsh environments.

**TIGER Drylac® Dryprotector, (69/70000), Zinc-Rich Primer (69/90500 - 69/90701** in Canada only) and Zinc-Free **OGF Primer (09/73841)** are primers recommended to achieve an optimum non-porous film. For additional information on the application of the **TIGER Shield** system, refer to the latest Product Data Sheets for these primers, which can be found on the TIGER Coatings website.

### Bureau of Land Management (BLM) Standard Environmental Colors

The US Bureau of Land Management Standard Environmental Colors were developed by government to minimize visual contrast with background landscaping and ensure proper color selection for facilities. **TIGER Drylac® Super Durable** products in BLM colors are approved to US government standards due to their outstanding weather and UV resistance, engineered to withstand extended exposure to harsh environments.

### 3D Metallic Powder Coatings

Until now one-coat powder coatings could not match the visual performance provided by wet effect paints. However, **TIGER Coatings** is now opening spheres previously out of reach with **3D Metallics**. The coating features a breathtaking, three-dimensional effect with stunning depth, spatial clarity and unsurpassed brightness. These effects remain visible at a considerable distance and from different perspectives.

With **TIGER Drylac® 3D Metallics**, many areas of industrial surface finishing may now draw on the ‘green’ technology of powder coating and move away from solvent-based wet paints.

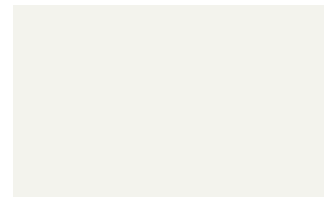
**TIGER Drylac® 3D Metallics** are a **Super Durable** formulation. See our **Series 68 Color Card** for details.

### New Product – Weathered Steel Finishes

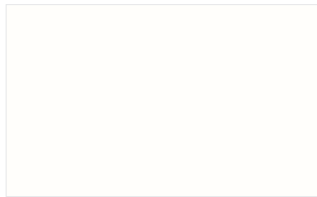
**TIGER Drylac®** introduces two new finishes to replicate the comforting look and tactile feel of naturally weathered steel. **Weathered Steel Ambra** pleasingly resembles orange rust on iron, while **Weathered Steel Viola** exhibits deep reds and burgundies that blossom only after oxidation has occurred over many years. These finishes are easy to maintain and will retain their original color without unsightly stains and degradation that occur with rusting iron.

Products marked with RED text: Limited stock is available, please consult the stock indicator on our Webshop or contact TIGER at 1 (800) 243-8148. Once stock is depleted, product will be moved to Custom Order and minimum quantities of 500 kg/1,100 lb will apply.

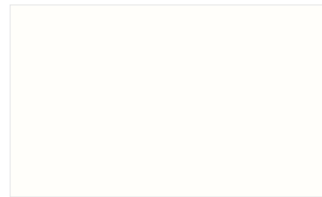
DIGITAL VERSION: The colors/effects shown here will deviate from the original color/effect due to screen technology.



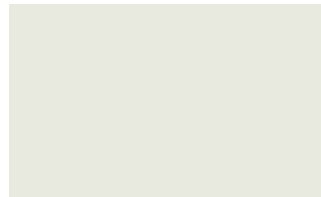
glossy | 138/10007  
Bianco 302 \*\*\* | gloss level 80-95



semi gloss | 138/10008 **NEW**  
Railing White | gloss level 55 - 65



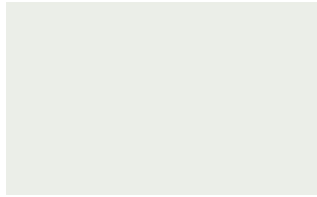
satin | 38/10130  
Seashell White \*\*\* | gloss level 23-33



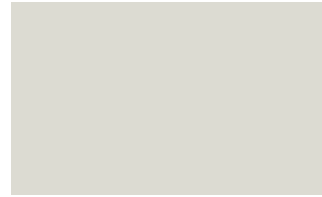
satin | 38/10070  
Bone White \*\*\* | gloss level 16-25



glossy | 138/10090  
Extrusion White \*\*\* | gloss level 80-95



semi matte | 38/11401  
Pompano White \*\*\* | gloss level 40-50



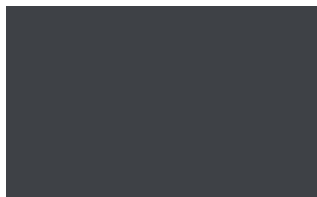
glossy | 38/70032  
Grey Classic 303 | gloss level 80-95



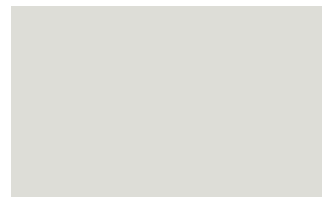
glossy | 138/70054  
Grey Classic 308 | gloss level 80-95



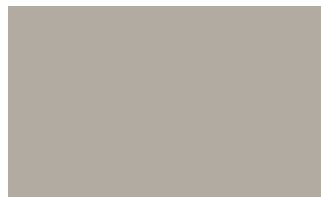
glossy | 38/70056  
Grey Classic 310 | gloss level 80-95



glossy | 138/70061  
Grey Classic 314 | gloss level 80-95



satin | 38/70048  
Sky Grey | gloss level 26-35



satin | 38/70025  
Ash Grey | gloss level 26-35



satin | 38/70049  
Grey | gloss level 26-35



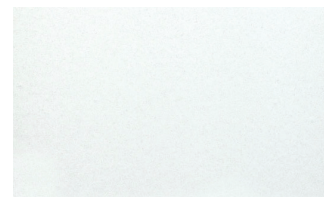
satin | 38/70019  
Slate Grey | gloss level 20-30



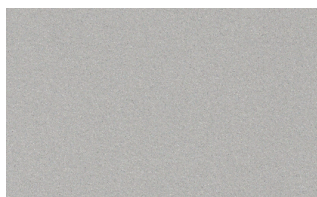
satin | 38/70070  
Taupe \*\*\* | gloss level 26-35



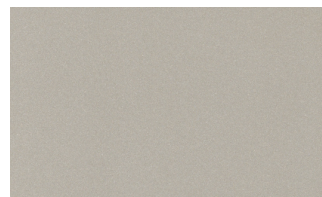
satin | 38/70780 **NEW**  
Charcoal Grey | gloss level 26-35



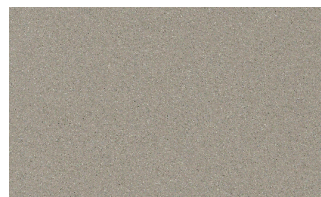
metallic | 38/90003  
Argento 301



metallic | 38/90007  
Argento 305



metallic | 38/90009  
Argento 307



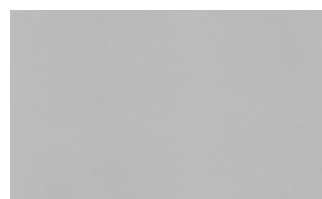
metallic | 38/90011  
Argento 308



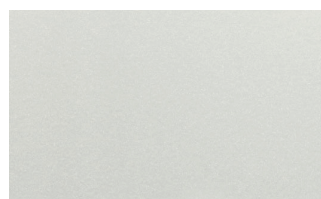
metallic | 38/90080  
Brilliant Sparkle Silver \*\* | \*\*\*



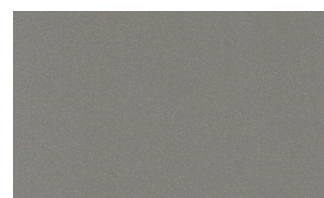
metallic | 38/99999  
Bengal Silver \*\*\*



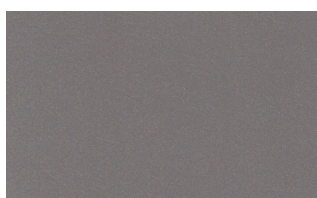
metallic | 138/91021  
Anodized Silver



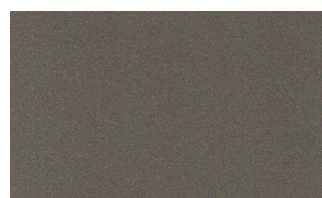
metallic | 38/90010  
Marine Silver One Coat



metallic | 38/90015  
Pearl Dark Grey



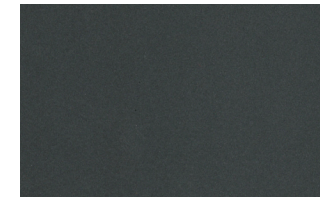
metallic | 38/90016  
Argento 312



metallic | 38/90018  
Argento 314



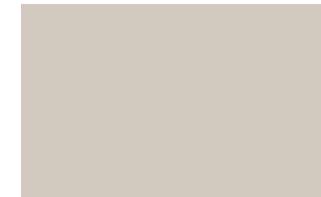
metallic | 38/97445 **NEW**  
Starline Silver



metallic | 38/88005  
Sparrow Grey



satin | 38/15003  
Almond \*\*\* | gloss level 26-35



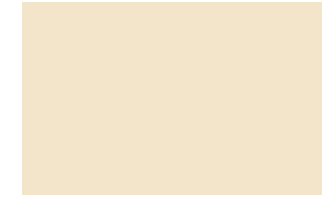
satin | 38/15012  
Sandstone \*\*\* | gloss level 26-35



satin | 38/15002  
Sierra Tan \*\*\* | gloss level 25-35



glossy | 138/15005  
Creme 301 \*\*\* | gloss level 80-95



glossy | 138/15007  
Creme 303 \*\*\* | gloss level 80-95



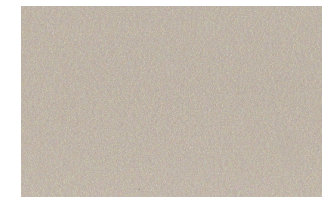
glossy | 138/15009  
Creme 305 \*\*\* | gloss level 80-95



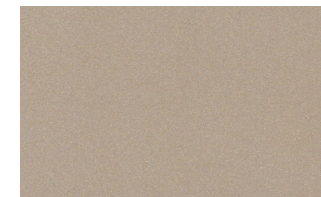
metallic | 38/15017  
Champagne 301



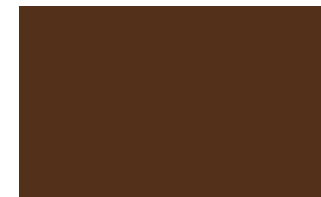
metallic | 38/15018  
Champagne 302



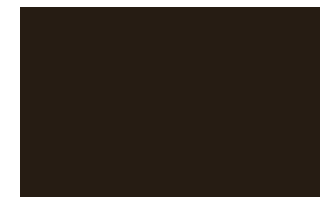
metallic | 38/15020  
Champagne 303



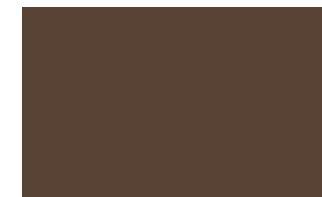
metallic | 38/15021  
Champagne 304



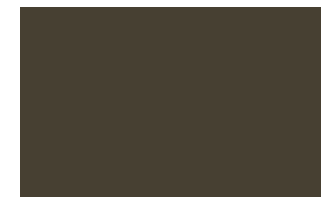
glossy | 138/60026  
Marrone 306 | gloss level 80-95



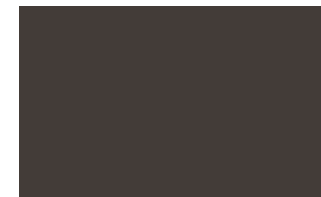
glossy | 138/60039  
Marrone 308 | gloss level 80-95



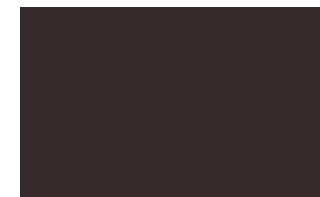
satin | 38/60018  
Koko Brown | gloss level 26-35



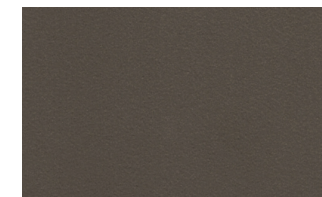
satin | 38/60014  
Medium Bronze | gloss level 26-35



satin | 38/60080  
Statuary Bronze | gloss level 26-35



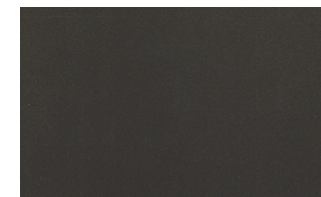
satin | 38/60090  
Dark Anodized Bronze | gloss level 25-35



metallic | 38/60060  
Medium Bronze



metallic | 38/96021  
Neptune Bronze



metallic | 38/68008  
Spartacus Bronze



fine texture | 38/68192  
Gold Brown



fine texture | 38/68130  
Greco



satin | 38/30041  
Redwood | gloss level 26-35



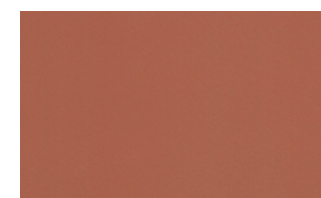
matte | 38/30028  
Brick Red | gloss level 16-25



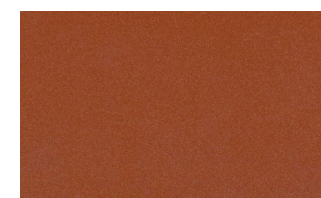
fine texture | 38/60499 **NEW**  
Weathered Steel Ambra



metallic | 38/20014  
Deore 302 \*\*\*



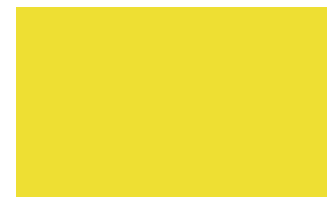
metallic | 38/68015  
Venetian Copper



metallic | 38/60064  
Pearl Copper

\*\* To enhance the depth of finish, TIGER Drylac® recommends the application of a clear top coat. | \*\*\* Due to semi transparency of the product, the opacity of the color and finish will depend upon the substrate type and the film thickness. A film below 2.8 mils will exhibit limited hiding.

Products marked with RED text: Limited stock is available, please consult the stock indicator on our Webshop or contact TIGER at 1 (800) 243-8148. Once stock is depleted, product will be moved to Custom Order and minimum quantities of 500 kg/1,100 lb will apply.



glossy | 138/20161  
Caution Yellow | gloss level 80-95 **NEW**



glossy | 138/50039  
Highland 305 | gloss level 80-95



glossy | 138/50040  
Highland 306 | gloss level 80-95



glossy | 138/50041  
Highland 307 | gloss level 80-95



satin | 38/50080  
Ivy Green | gloss level 26-35



satin | 38/50037  
Classic Green | gloss level 20-30



satin | 38/50110  
Hartford Green | gloss level 26-35



matte | 38/60006  
Aged Copper | gloss level 16-25



metallic | 38/50035  
Seafoam Green



metallic | 38/50043  
Highland 301



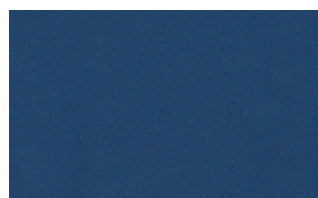
glossy | 138/40033  
Azzurro 307 | gloss level 80-95



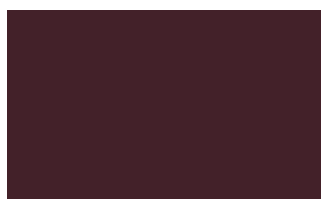
satin | 38/40051  
Military Blue | gloss level 20-30



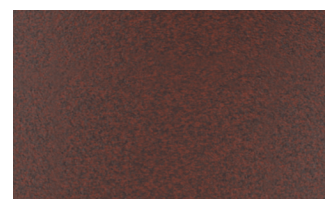
matte | 38/40025  
Interstate Blue | gloss level 16-25



metallic | 38/40127  
Pearl Night Blue



matte | 38/30033  
Boysenberry | gloss level 16-25



fine texture | 38/34005  
Weathered Steel Viola **NEW**



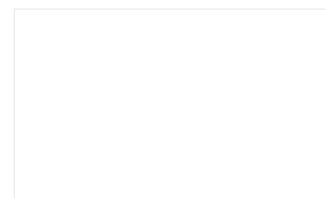
glossy | 138/80002  
Carbon 301 | gloss level 80-95



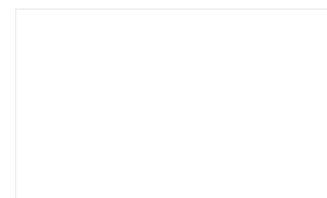
semi gloss | 138/81009  
Railing Black | gloss level 55-65



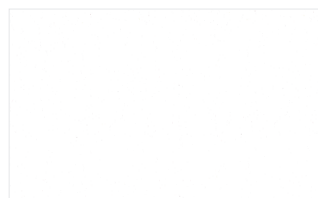
satin | 38/80020  
Jet Black | gloss level 26-35



clear | 38/00088  
Clear Matte SD



clear | 38/00001  
Clear High Gloss SD



fine texture  
all colors can be custom made in this finish

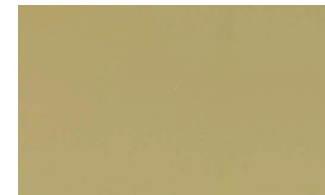
## BLM



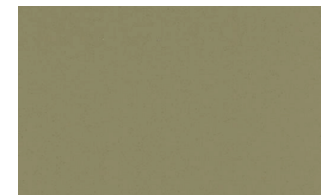
BLM | 38/60500  
Carob Brown | gloss level 55-65



BLM | 138/60400  
Sudan Brown | gloss level 55-65



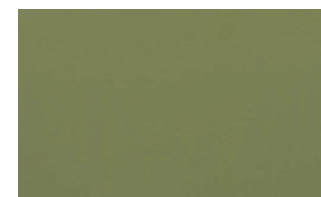
BLM | 38/16500  
Carlsbad Canyon Brown | gloss level 55-65



BLM | 38/50500  
Covert Green | gloss level 55-65



BLM | 38/52600  
Shale Green | gloss level 55-65



BLM | 38/51400  
Juniper Green | gloss level 55-65



BLM | 38/50400  
Beetle | gloss level 55-65



BLM | 38/53000  
Yuma Green | gloss level 55-65



BLM | 38/71700  
Shadow Gray | gloss level 55-65



## ANODIZED



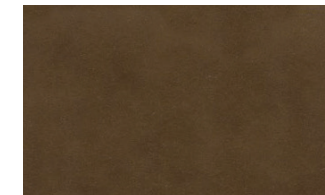
anodized effect | 61/00015  
Silver (clear)



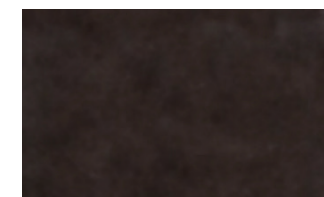
anodized effect | 61/78003  
Champagne



anodized effect | 61/78002  
Light Bronze



anodized effect | 61/68002  
Medium Bronze



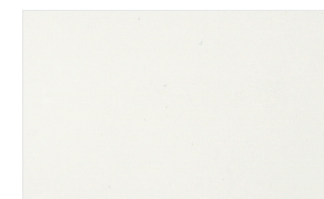
anodized effect | 61/68001  
Dark Bronze



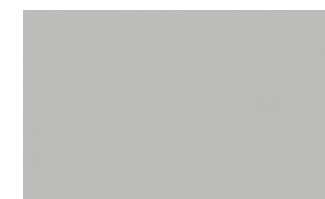
anodized effect | 61/80079  
Black



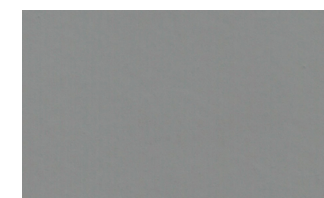
## PRIMERS



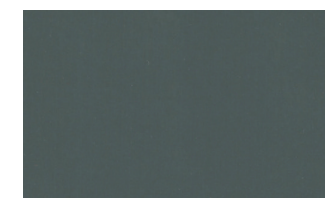
primer | 69/11001  
Dryprotector White | gloss level 2-6 **NEW**



primer | 09/73841  
OGF | gloss level 65-75



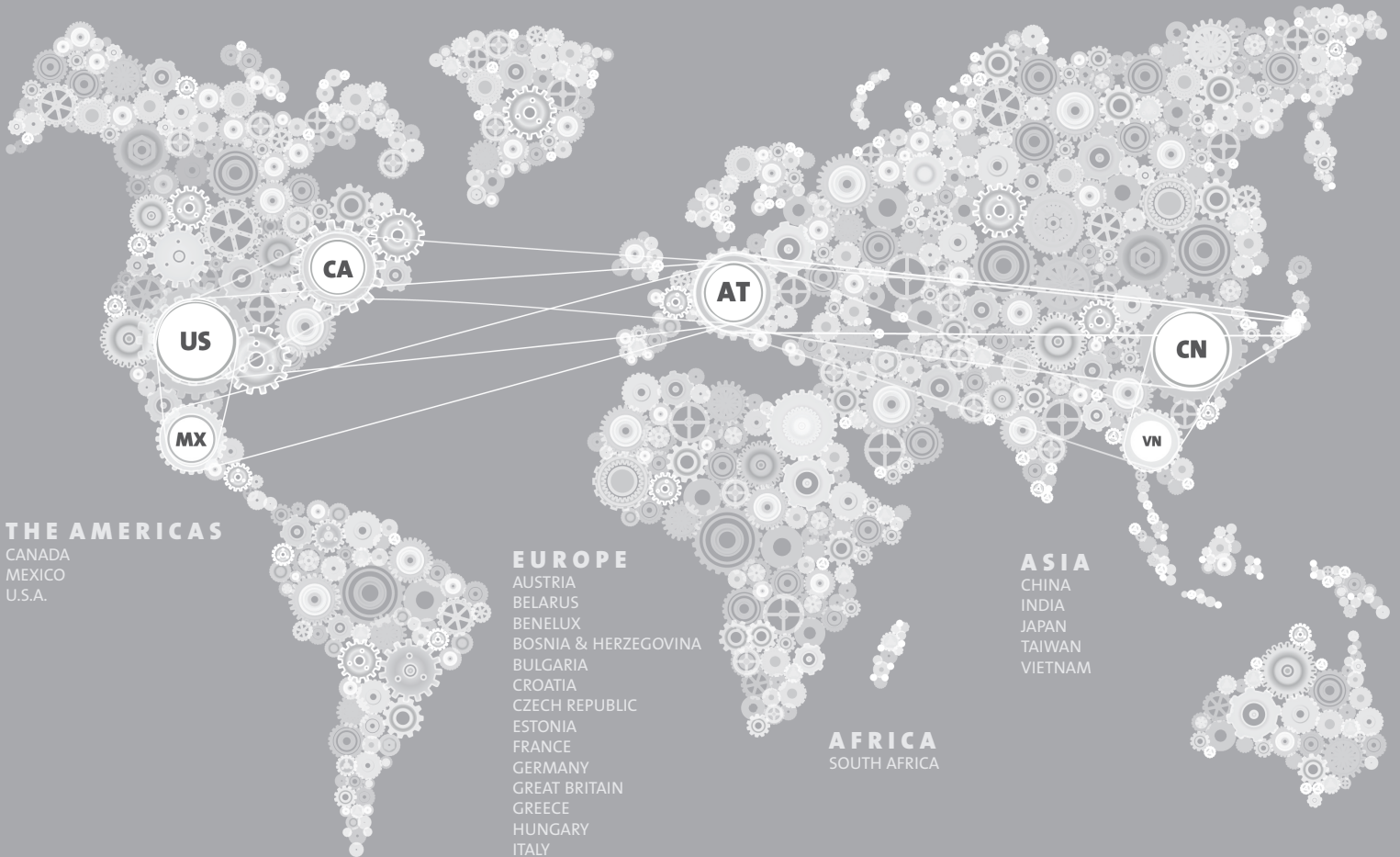
primer | 69/70000  
Dryprotector | gloss level 1-5



primer | 69/90500 (USA/Mexico)  
69/90701 (Canada)  
Zinc-Rich Primer | gloss level 60-90

DIGITAL VERSION: The colors/effects shown here will deviate from the original color/effect due to screen technology.

# TIGER WORLDWIDE NETWORK



## THE AMERICAS

CANADA  
MEXICO  
U.S.A.

## EUROPE

AUSTRIA  
BELARUS  
BENELUX  
BOSNIA & HERZEGOVINA  
BULGARIA  
CROATIA  
CZECH REPUBLIC  
ESTONIA  
FRANCE  
GERMANY  
GREAT BRITAIN  
GREECE  
HUNGARY  
ITALY  
LATVIA  
LITHUANIA  
MACEDONIA  
POLAND  
ROMANIA  
SERBIA & MONTENEGRO  
SLOVAKIA  
SLOVENIA  
SWITZERLAND  
SPAIN  
TURKEY  
UKRAINE

## AFRICA

SOUTH AFRICA

## ASIA

CHINA  
INDIA  
JAPAN  
TAIWAN  
VIETNAM

999000070087

contact details available at

[tiger-coatings.com](http://tiger-coatings.com)



US/Canada: 1 (800) 243-8148

Mexico: 01 (800) 368-4437



# TIGER Drylac® Architectural Powder Coatings

A unique collection of powder coatings compliant with AAMA specifications for North American manufacturers and designers.

## Features

High performance architectural powder coating featuring:

- Superior gloss and color retention
- Outstanding resistance to fading
- Outstanding resistance to chalking
- Good chemical resistance
- Good edge coverage
- Good storage stability

## Typical Applications

All Architectural and Construction Applications including:

- Metal Facades
- Marine Equipment
- Curtain Walls
- Window & Door Frames
- Railings
- Light Poles

## TIGER Drylac® Series 75

Hyper Durable Powder Coatings for Architectural Aluminum Applications

**TIGER Drylac® Series 75** is a Hyper Durable powder coating offering superior weatherability for architectural aluminum applications meeting the performance requirements described within AAMA 2605-20<sup>1</sup>. AAMA 2605 is the highest performance standard for superior performance organic coatings applied to architectural products. Series 75 flouropolymer powder coatings offer an environmentally friendly alternative to liquid coatings, achieving greater than 2.5 mil of dry film in a single application. The resulting finish is a corrosion resistant, mechanically robust, protective coating providing superior resistance to chalking and color fade<sup>2</sup>.

Our products within **Series 75** are only available to **TIGER Drylac®** approved applicators for applications with an approved pretreatment on aluminum.

Series  
**75**

## TIGER Drylac® Series 38/138

Super Durable Powder Coatings for exterior and interior applications

**TIGER Drylac® Series 38** polyester TGIC super durable, and **TIGER Drylac® Series 138** TGIC-free super durable powder coatings are compliant with the American Architectural Manufacturing Association's specification AAMA 2604<sup>3</sup>, offering excellent weather and UV resistance. Based on 5-year Florida exposure, **TIGER Drylac® Series 38/138** exhibits  $\leq \Delta E$  5.0 (Hunter) color change and > 30% gloss retention. TGIC-Free chemistry is also available for global distribution as **TIGER Drylac® Series 58**. **Series 58** is fully compliant with AAMA 2604 offering the same level of performance and protection.

For more information on **Series 38/138** super durable powder coatings please refer to our Super Durable color card.

For more information on **Series 58** TGIC-Free super durable powder coatings please refer to our product data sheet available on our website or consult with your **TIGER Drylac®** sales representative. **Series 58** is only available to approved architectural applicators.

Series  
**38**  
**138**  
**58**

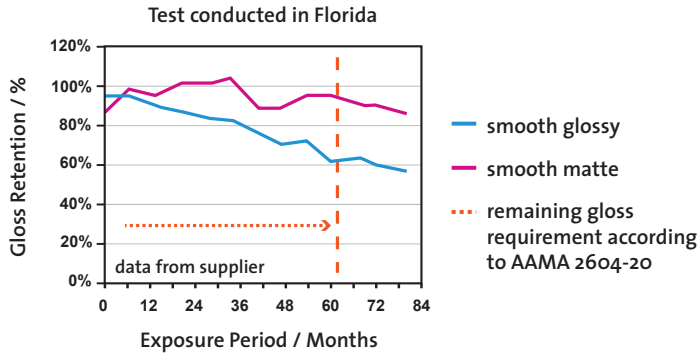
<sup>1</sup>AAMA 2605 compliance is dependent upon the color and/or effect.

<sup>2</sup>Colors lighter than RAL 7000 in hue may prematurely chalk in extreme conditions due to the limitations of white pigment titanium dioxide.

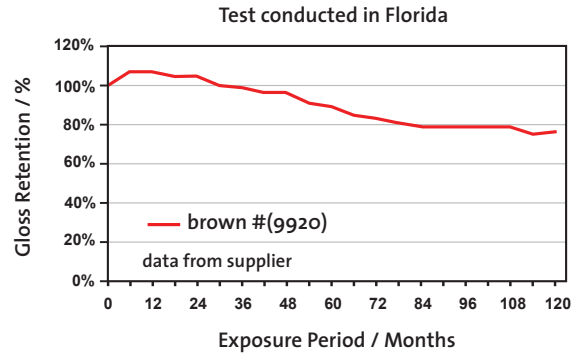
<sup>3</sup>AAMA 2604 compliance is dependent upon the color and/or effect.

# Weather resistance of TIGER Drylac® Architectural Powder Coatings

## Weather resistance testing according to AAMA 2604



## Weather resistance testing according to AAMA 2605-20



TIGER Drylac® offers a variety of standard architectural products listed in the chart below.

COLOR NAME	TYPE	AAMA 2604		AAMA 2605	
		PRODUCT NUMBER	GLOSS	PRODUCT NUMBER	GLOSS
Sky Grey†	Solid Color	038/70048	25 - 35	075/70294	45 - 55
<b>Dark Anodized Bronze</b>	Solid Color	038/60090	25 - 35	<b>075/60091</b>	<b>30 - 40</b>
Medium Bronze	Solid Color	038/60014	20 - 30	075/60088	30 - 40
(Silver) Grey†	Solid Color	038/70049	25 - 35	075/70299	45 - 55
Statuary Bronze	Solid Color	038/60080	25 - 35	075/60090	30 - 40
Taupe	Solid Color	038/70070	25 - 35	075/70307	30 - 40
Sandstone†	Solid Color	038/15012	25 - 35	075/15061	45 - 55
Redwood	Solid Color	038/30041	25 - 35	075/30015	30 - 40
Interstate Blue	Solid Color	038/40025	16 - 25	075/40030	30 - 40
Slate Grey	Solid Color	038/70019	25 - 35	075/70302	30 - 40
Sierra Tan†	Solid Color	038/15002	25 - 35	075/15059	45 - 55
Bone White†	Solid Color	038/10070	25 - 35	075/10079	45 - 55
Almond†	Solid Color	038/15003	25 - 35	075/15060	45 - 55
Brick Red	Solid Color	038/30028	16 - 25	075/30010	30 - 40
Boysenberry	Solid Color	038/30033	16 - 25	075/30014	30 - 40
Ivy Green	Solid Color	038/50080	25 - 35	075/50020	30 - 40
Hartford Green	Solid Color	038/50110	25 - 35	075/50025	30 - 40
Aged Copper	Solid Color	038/60006	16 - 25	075/60087	45 - 55
Koko Brown	Solid Color	038/60018	25 - 35	075/60089	30 - 40
Ash Grey	Solid Color	038/70025	25 - 35	075/70303	30 - 40
Military Blue	Solid Color	038/40051	25 - 35	075/40031	30 - 40
<b>Sea Shell White†</b>	Solid Color	038/10130	25 - 35	<b>075/10081</b>	<b>55 - 65</b>
Jet Black	Solid Color	038/80020	26 - 35	075/80020	35 - 45
<b>Charcoal Grey</b>	Solid Color	038/70780	25 - 35	<b>075/70312</b>	<b>30 - 40</b>
Medium Bronze Metallic	Metallic	038/60060	Satin	075/68004	Semi Matte
Medium Bronze Anodized	Metallic	061/68002	Satin	075/68009	Semi Matte
Argento 314 Metallic	Metallic	138/90018	Glossy	075/78009	Semi Matte
Champagne 303 Metallic	Metallic	038/15020	Stain	075/15046	Semi Matte
Pearl Dark Grey	Metallic	038/90015	Satin	075/78014	Semi Matte
Anodized Silver	Metallic	138/91021	Semi Gloss	075/90127	Semi Matte

### Custom Colors

TIGER Drylac® offers custom color matching\* with as little as 88lb/40kg for solid and 396lb/180kg for metallic\*\*.

† Series 75 colors marked with this symbol and those lighter than RAL 7000 in hue may prematurely chalk in extreme conditions due to the limitations of white pigment titanium dioxide.

\* Due to the extreme durability requirements, organic pigments as a class cannot be used. This limits the colors to earth tone colors and colors of similar chromaticity in other parts of the spectrum, such as red, blue and green. Evaluations by our laboratory on a case-by-case basis are necessary.

\*\* Metallic colors and effect may vary due to the product chemistry therefore a sample panel should be requested for official color approval. Custom matching is available. Please contact your TIGER Sales Representative for additional details.

