



RANCH

EST. 1961

2020 SPRING

Production Sale • 12:30PM • Friday • April 17<sup>th</sup>

*At the* RANCH





Jeff Chaffin, Ranch Manager  
Joe Walker & Joey Walker, Owners  
Ranch Office: (254) 635-4444  
Ranch Fax: (254) 635-7201  
P.O. Box 9  
Morgan, Texas 76671  
[www.w4ranch.com](http://www.w4ranch.com)



Joe Walker, Joey, Kim, Sydney  
and Tripp Walker



Jeff Chaffin Family



Ranch Staff (left to right) Jeff Chaffin,  
Matt John and Matt Jones

*"We invite you to  
view our 2020 spring  
production sale..."*

## Welcome to our 5th Annual W4 Spring Bull and Female Sale!

Thank you for taking the time to review our offering and we think you'll find bulls and females that can add value to your program and be a contributing factor towards your bottom line.

We are excited about the bulls we have to offer and we make every effort to raise bulls that work as we consider it a worthwhile investment of our time and resources to be part of our customers' future.

We have really strived to add quality, value and emphasize the traits that will add to your bottom line. There are sons from our battery of proven herd sires and they are ready to go to work in your pastures. These bulls offer high EPDs in weaning and yearling weights, have carcass quality and have been developed to be range tough, plus all bulls have passed a breeding soundness examination. This offering will honor our commitment to our commercial cow/calf customers as they will add value to their calf crops. We are selling 60 two-year-old and 15 fall yearling age bulls.

This year's female offering will include 30 registered Hereford open heifers; 50 registered Hereford heifers, bred to Hereford bulls, 50 Hereford heifers bred to low birth weight Angus bulls, and 20 cows bred to Hereford and Brangus bulls that are 3&4 years-old.

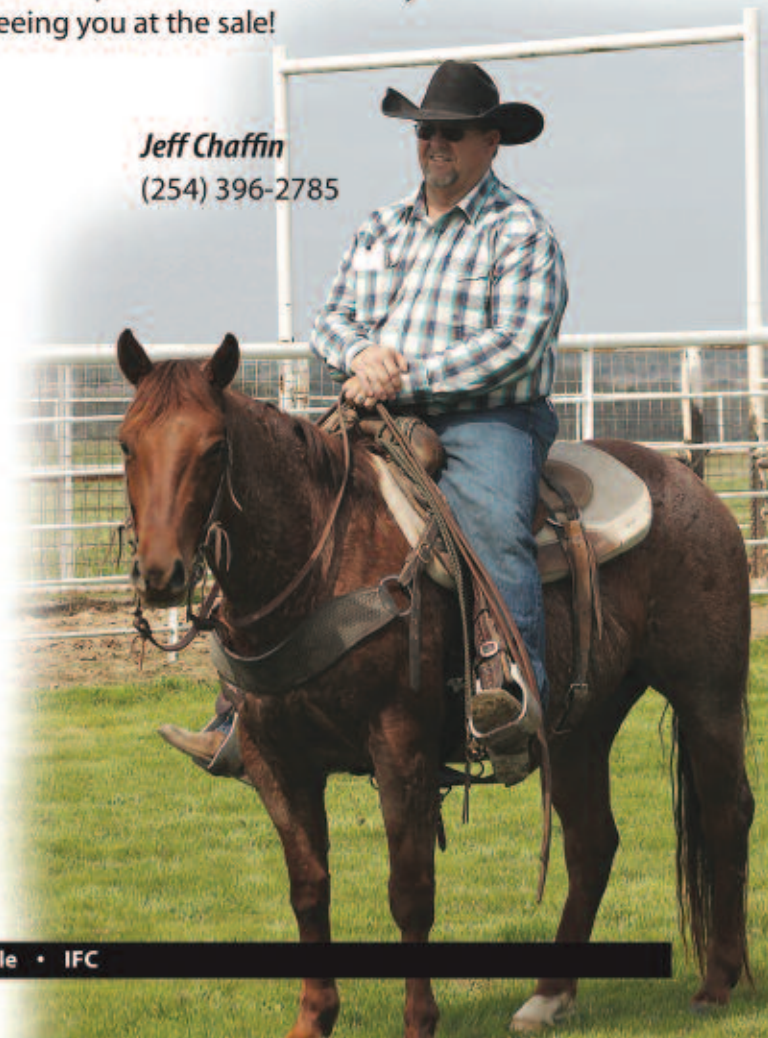
Please join the Walker family and the W4 crew on Friday, April 17th.

Customer service and complete satisfaction are very important to us, so if we can answer any questions or help you find the right bull or female, please contact us as we promise to take care of you.

We look forward to seeing you at the sale!

**Best Regards,**  
**Joe and Joey Walker**  
(817) 595-1121

**Jeff Chaffin**  
(254) 396-2785





## SCHEDULE OF EVENTS

**FRIDAY, APRIL 17, 2020**

**8:00 a.m. – Breakfast Burritos, coffee and viewing of cattle**

**11:00 a.m. – Lunch served**

**12:30 p.m. – Spring Production Sale**

### *Selling*

- 62 – Two-Year-Old Bulls**
- 15 – Fall Yearling Bulls**
- 50 – Registered Hereford Heifers bred to low birth weight Hereford Bulls**
- 50 – Registered Hereford Heifers bred to low birth weight Angus Bulls**
- 30 – Registered Open Heifers**
- 20 – Registered 3 and 4 Year Old Hereford Cows, bred to Brangus and Hereford bulls, many will have calves at side**

Sale will be broadcast through Superior on SLA-TV, Dish Network Channel 998  
and on [www.superiorlivestock.com](http://www.superiorlivestock.com) — see page 44 for details.





# Spring Production Sale

## FRIDAY, APRIL 17, 2020

### 12:30 p.m. CST – At the ranch, Morgan, Texas

#### Sale Location

W4 Ranch-Steele Creek Headquarters, located on FM 927 between Lakeside Village and Morgan in Bosque County, Texas or 4 miles east of Morgan from Hwy. 174.

#### Accommodations

Hillsboro, Texas, 29 miles from the ranch

**Sale Headquarters: Ramada Inn**  
**(254) 582-3493 or (877) 200-3392**

Other lodging at

Comfort Inn, (254) 582-3338

Holiday Inn Express, (254) 582-0220

Also in Clifton, 20 miles from ranch

Best Western, (254) 675-8999

#### Air Travel

Dallas/Fort Worth Airport is serviced by most major airlines and is 90 miles from ranch. Waco Airport is located just 40 minutes from ranch. We have a private FAA approved airstrip located on the ranch that can accommodate most all private planes. W4 Ranch airstrip's new location identifier for the landing facility is 84T3.

A 75' wide x 4,500' long asphalt runway.

**Call (254) 635-4444 for shuttle to sale barn.**

#### Sale Day Phone

(254) 635-4444 – Phone bids welcomed

#### Sale Manager

**JOHNSON**  
CATTLE MARKETING

Tom Johnson

440 FM 246 • Wortham, Texas 76693

(903) 599-2403 or

(817) 291-5121

#### Absentee Inquiries/Bids Contact

Tom Johnson, cell.....(817) 291-5121

Jeff Chaffin.....(254) 396-2785

Joe Walker.....(817) 965-4560 or office (817) 595-1121

Joey Walker.....(817) 395-2228

Jim Boyd.....(325) 669-4784

Jack Chastain.....(817) 831-3161

#### Bidding/Buying Online

Sale will be broadcast live through Superior.

Call **800/422-2117** to register.

See page 44 for details on

viewing/bidding/buying

through Superior.



#### Auctioneer

Col. Doak Lambert

#### Sale Staff

Hereford World..... Colton Pratz

Texas Hereford..... Jack Chastain

Weekly Livestock Reporter..... Ralph Means

Special Assignment..... Jim Boyd

#### Terms of Sale

Terms of sale are CASH, to be paid in full at the conclusion of the sale. We will be glad to consider special terms if arrangements are made prior to the sale date. Contact Tom Johnson.

#### Sale Conditions

Each animal will be sold to the highest bidder with the auctioneer settling any disputes as to bids. Each animal will become the property of the buyer as soon as sold.

#### Guarantee

All cattle are guaranteed to be breeders; all females having been examined safe in calf will be considered as proven breeders. Any bull subsequently found to be a non-breeder may be returned in good condition and with our permission within six months of the sale date. We reserve the right to try any reported non-breeder for six months and if we cannot confirm the animal as a breeder will refund the purchase price.

#### Herd Health

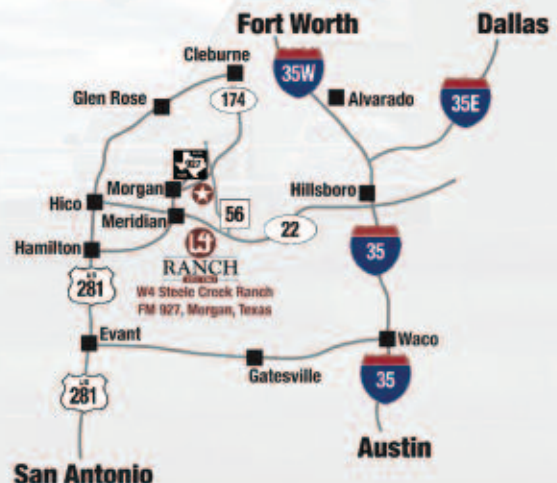
Individual health certificates for interstate shipment will be furnished on all sale cattle. All test-age cattle will have been tested negative for Brucellosis. All the cattle have been vaccinated for 7-Way Blackleg, Lepto and wormed. Mark Jackson, DVM serves as our herd veterinarian.

#### EPDs

EPDs in this catalog were obtained on March 9, 2020.

#### Note

All persons attending the sale do so at their own risk. W4 Ranch nor any person connected with the sale assumes liability, legal or otherwise, for any accidents which may occur.





*Stand out with Proven Genetics*

# THE HEREFORD ADVANTAGE PROGRAM

Increase added market power and brand recognition with feeder cattle sired by a Hereford bull battery ranking in the top 50% for CHB\$ index.



## PROGRAM BENEFITS:

- ✓ EPD ranking summary
- ✓ Added market exposure
- ✓ Genetic improvement tool
- ✓ Access to AHA resources
- ✓ Get started at [HerefordFeederCattle.com](http://HerefordFeederCattle.com)

“The Hereford Advantage program helps us to focus on providing the best quality genetics that we can possibly provide to our customers - the cattle feeder. We try to select bulls who will sire calves that will excel in the feed yard.”

**-NANCY BOWLING**

BOWLING RANCH, NEWKIRK, OKLA.

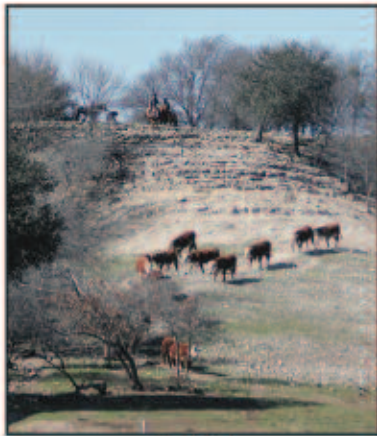


Certified Hereford Beef Index(CHB\$) is a terminal sire index that is built on a production system where Hereford bulls are used on Angus-based cows with a focus on feedlot performance and end-product merit. To qualify for the Hereford Advantage program, cattle must be sired by registered Hereford bulls with transferred ownership, and the Hereford bull battery must have a CHB\$ value ranking in the top 50%.





Jeff Chaffin, Ranch Manager  
Joe Walker & Joey Walker, Owners  
Ranch Office: (254) 635-4444  
Ranch Fax: (254) 635-7201  
P. O. Box 9  
Morgan, Texas 76671  
[www.w4ranch.com](http://www.w4ranch.com)



The Hill



The Feedlot

*"Our bulls  
will work  
anywhere and  
gain as they  
are working..."*

# The W4 Ranch Bull Development Center

*"Our bulls can work anywhere..."*

Our Bull Development Center is 100 acres that is divided into five paddocks with a 200 feet tall rock hill in the center.

After preconditioning, these bulls are divided by age groups and walked to the paddocks.

On one side of the hill is their water and on the opposite side, their feed source.

The distance is a half mile each way and requires climbing the rock hill. This procedure strengthens hocks and feet as well as builds muscle.

Bulls raised in this environment will work anywhere and gain as they are working.







# 2020 W4 Ranch Sale Bull Facts

## PERFORMANCE & CARCASS • EPD INFORMATION

- ✓ Bulls weaned, vaccinated and wormed at 205 days.
- ✓ Bulls conditioned on starter ration for 21 days and then transitioned to a high roughage ration for the remainder of the feed period.
- ✓ Bulls raised on high roughage ration.
- ✓ Bulls weaning and yearling weights are actual.

### EPD – Expected Progeny Difference

Prediction of an animal's future progeny performance compared to progeny of other animals within their respective breed's data-base. EPDs are not comparable between breeds.

### CED – Calving Ease Direct

Expressed as a difference in % of unassisted births influenced by calving ease scores and birth weight. Higher CED indicates greater calving ease in first calf heifers.

### BW – Birth Weight (lbs.)

Predictor of ability to transmit birth weight. Negative (-) values means less birth weight.

### SC – Scrotal Circumference (cm)

Directly related to a bull's fertility and reproductive performance. Age at puberty and reproductive performance of females is also related to scrotal EPDS.

### WW – Weaning Weight (lbs.)

Reflects pre-weaning growth potential.

### YW – Yearling Weight (lbs.)

Reflects post weaning growth, up to one year of age.

### Maternal Milk (lbs.)

Predictor of genetic merit for weaning weight due to milk and mothering ability as expressed through an animal's daughters.

### MARB – Marbling

Adj. 365-day carcass intramuscular fat (marbling) score based on ultrasound measurements of five yearling cattle. High IMF score should produce progeny with higher quality grades.

### REA – Ribeye Area

365-day carcass ribeye area measure based on ultrasound measurements of live yearling cattle. Higher REA should produce progeny with more muscle.

### FAT

Adj. 365-day twelfth-rib carcass fat thickness based on ultrasound measurements of live yearling cattle. Lower EPDs should produce progeny with less external fat thickness.

**\* Performance and carcass EPDs are listed for each in the sale. Use them as a tool in making selections for your program.**

### \* 2020 American Hereford EPD Percentiles

	CED	BW	WW	YW	MM	M\$G	CEM	SC	FAT	REA	MARB
1%	13.4	-2.7	70	114	37	66	8.8	1.7	-0.041	0.75	0.47
5%	10.1	-0.1	65	104	32	62	6.7	1.4	-0.031	0.63	0.31
10%	8.1	0.7	62	99	30	59	5.6	1.3	-0.021	0.56	0.24
30%	4.4	2.2	56	90	26	54	3.4	1.1	-0.001	0.44	0.14
50%	2.1	3.0	52	83	24	50	1.8	0.9	0.009	0.36	0.08





**REF DH DOMINO 392A**  
 DOB: 12/08/13 Bull 43459361 Tattoo: 392A

CL 1 DOMINO 0141 1ET (CHB,DLF,HYF,IEF) 43082416  
 CL 1 DOMINO 860U (SOD,CHB,DLF,HYF,IEF)  
 CL 1 DOMINETTE 475P (DLF,HYF,IEF)  
 DH ADVANCE 736 (CHB,DLF,HYF,IEF)  
 DH MISS ADVANCE 9156 (DLF,HYF,IEF) 43068442  
 DH DOMINETTE 7157  
 CL 1 DOMINO 637S 1ET (CHB)  
 CL 1 DOMINETTE 5142R (DOD,DLF,HYF,IEF)  
 CL 1 DOMINO 824H (SOD,DLF,IEF)  
 CL 1 DOMINETTE 200M (DOD)  
 HH ADVANCE 286M 1ET (SOD,DLF,IEF)  
 DH DOMINETTE 4121 (DLF,HYF,IEF)  
 DH DOMINO 302 (DLF,IEF)  
 DH MISS ADVANCE 3162

BW	WW	YW	Milk	M&G	YSC	REA	IMF	CHB
5.2	70	121	36	71	0.8	0.65	0.017	111

392A was purchased as the high selling bull at Debter's in Alabama. This bull is exceeding our high expectations and the results are evident in his first calf crop. Lots of performance and look in this L1 bull.



**REF C BAILEES MILES 4312 ET**  
 DOB: 03/18/2014 Bull 43487323 Tattoo: 4312

C MILES MCKEE 2103 ET (CHB,DLF,HYF,IEF,MSUDF) 43270668  
 NJW 98S R117 RIBEYE 88X ET (SOD,DLF,HYF,IEF,MSUDF)  
 C NOTICE ME ET (DLF,HYF,IEF)  
 BR BAILEE 1066 ET (DLF,HYF,IEF) 43224862  
 BR GABRIELLE 5082 (DLF,HYF,IEF)  
 SHF RIB EYE M326 R117 (SOD,DLF,HYF,IEF)  
 NJW 9126J DEW DOMINO 98S (DOD,DLF,HYF,IEF)  
 C-S PURE GOLD 98170 (CHB,SOD,DLF,HYF,IEF)  
 HH MISS ADVANCE 104A (DOD)  
 REMITALL ONLINE 122L (CHB,SOD,DLF,HYF,IEF)  
 DM L1 DOMINETTE 901 (DLF,HYF,IEF)  
 BR LANSING 3060  
 BR GOLDRIEL 3029 ET (DLF,HYF,IEF)

BW	WW	YW	Milk	M&G	YSC	REA	IMF	CHB
5.4	65	106	34	67	0.9	0.56	-0.031	109

C Bailees Miles ended his show career as the Reserve Grand Champion bull at the Ft Worth Stock Show. The very next day he was out breeding cows here at W4. He is a true beef bull and to quote Guy Colyer, "he moves like a saddle horse". We feel he will add length and muscle in a moderate efficient package.



**REF CL 1 DOMINO 338A**  
 DOB: 01/09/13 Bull 43379685 Tattoo: 338A

CL 1 DOMINO 105Y (DLF, HYF, IEF) 43189434  
 CL 1 DOMINO 929W (DLF, HYF, IEF)  
 CL 1 DOMINETTE 9140W 1ET (DOD, DLF, HYF, IEF)  
 CL1 DOMINO 862U (CHB,DLF,IEF)  
 CL 1 DOMINETTE 1146Y (DLF, HYF, IEF) 43189521  
 CL 1 DOMINETTE 617S (DLF, HYF, IEF)  
 CL 1 DOMINO 637S 1ET (CHB)  
 CL 1 DOMINETTE 615S (DLF, HYF, IEF)  
 CL 1 DOMINO 732T (SOD, CHB, CLF, IEF)  
 CL 1 DOMINETTE 475P (DLF, HYF, IEF)  
 CL 1 DOMINO 637S 1ET (CHB)  
 CL 1 DOMINETTE 6131R (DLF, HYF, IEF)  
 HH ADVANCE 3113N 1ET (SOD)  
 CL 1 DOMINETTE 4180P (DOD, DLF, HYF, IEF)

BW	WW	YW	Milk	M&G	YSC	REA	IMF	CHB
2.9	52	79	45	71	1.4	0.59	-0.003	116

338A is a calving ease bull bred in the Cooper Herd in Montana. He is a well-balanced bull with some muscle and shape. Balanced EPDs and strong Ribeye and CHB numbers.



**REF DB 5216 DOM 0387**  
 DOB: 10/01/10 Bull 43146486 Tattoo: 0387

UPS DOMINO 5216 (SOD,DLF,IEF) 42644307  
 UPS DOMINO 3027 (CHB,SOD,DLF,HYF,IEF)  
 UPS MISS MOM 2756 (DOD)  
 CHURCHILL DOMINO 313  
 DB MISS DOM 6005 42752001  
 DB MISS HORIZON 7223  
 CL 1 DOMINO 9126J 1ET (SOD,CHB,DLF,IEF)  
 UPS MISS DIAMOND 1353 (DLF,HYF,IEF)  
 JS MISTER MOM 7745 (SOD,DLF,HYF,IEF)  
 UPS MS ADVANCE 7573  
 H5 9012Y ADVANCE 501 (SOD)  
 CHURCHILL LADY 147  
 IMR HORIZON 2001 2ET  
 DB MISS STAR K150

BW	WW	YW	Milk	M&G	YSC	REA	IMF	CHB
3.7	58	95	25	54	1.7	0.52	0.035	97

0387 was purchased from Dudley Brothers in the Fall of 2012 because of the genetics on his sire's side. He has been a wise choice. He has been equally good breeding heifers, as well as cows and with his balanced EPDs his progeny are excellent.





**REF W4 592 DOMINO 102Y ET**  
 DOB:01/01/11 Bull 43212083 Tattoo:102Y

CHURCHILL RANCHER 592R (SOD, CHB, DLF, IEF)  
 42580855

MH DAKOTA 0230 (SOD, DLF, HYF, IEF)  
 CHURCHILL LADY 202 (DLF, HYF, IEF)

SR LAD 447 (SOD, CHB, DLF, IEF)  
 JV ANGEL 684  
 HH ADVANCE 767G 1ET (SOD, DLF, IEF)  
 CHURCHILL LADY 0113

BR 74 ALAINNA 3113  
 42453687

BR DM KEY DOMINO 0174 (DLF, IEF)  
 BR DOMINETTE 0013 (CHB, DLF, HYF, IEF)

REMITALL KEYNOTE 20X (SOD, CHB)  
 DM L1 DOMINETTE 518  
 BR SUMMIT 7148  
 BR L1 DOMINETTE 8029

BW	WW	YW	Milk	M&G	YSC	REA	IMF	CHB
5.8	59	90	24	54	0.4	0.26	0.057	92

This Churchill Rancher sired bull has made quite an impact on our herd. 102Y is a heavily muscled, long sided bull that will add performance and length to his calves. Numerous top selling bulls in past sales were sired by 102Y.



**REF BAR-S-SOF MR 88X 310**  
 DOB:01/07/13 Bull 43396221 Tattoo:310

NJW 98S R117 RIBEYE 88X ET (CHB, DLF, HYF, IEF)  
 43094146

SHF RIB EYE M326 R117 (CHB, SOD, DLF, HYF, IEF)  
 NJW 9126J DEW DOMINO 98S (SOD, DLF, HYF, IEF)

KCF BENNETT 3008 M326 (CHB, SOD, DLF, HYF, IEF)  
 HVH MISS HUDSON 83K 8M  
 CL 1 DOMINO 9126J 1ET (SOD, CHB, DLF, IEF)  
 NJW 57G 74G DEW 5M (DLF, HYF, IEF)

BHF MISS KOOTER 602 (DLF, HYF, IEF)  
 42698415

LPS KOOTENAY 3228 1ET (CHB)  
 BHF 746G DOMINETTE 316

REMITALL KOOTENAY 9K (CHB, DLF, HYF, IEF)  
 LPS MISS PURE GOLD 0613  
 HH ADVANCE 767G 1ET (SOD, DLF, IEF)  
 BHF CC DOMINETTE 104

BW	WW	YW	Milk	M&G	YSC	REA	IMF	CHB
4.7	64	95	34	66	0.8	0.81	-0.013	126

310 is sired by the 88X bull, who is siring some of the most sought-after cattle in the industry today. He was added to our herd bull lineup for his structural correctness and powerful makeup. His sons and daughters will benefit from his EPD profile. He is truly a "spread" bull from BW to YW with added milk and carcass traits.



**REF W4 W168 DOMINO B080**  
 DOB:02/27/14 Bull 43520661 Tattoo:B080

W4 -S ADVANCE DOM W168 ET  
 43045106

CL 1 DOMINO 477P (CHB, SOD, DLF, IEF)  
 HH MISS ADVANCE 2111 M

CL 1 DOMINO 9126J 1ET (SOD, CHB, DLF, IEF)  
 CL 1 DOMINETTE 839H (SOD, DLF, IEF)  
 HH ADVANCE 767G 1ET (SOD, DLF, IEF)  
 CL 1 DOMINET 496 1ET

W4 4011 DOMET T127  
 43020372

C 212 DOMINO 4011 ET (CHB, DLF, HYF, IEF)  
 W4 25 DOMET P245

CL 1 DOMINO 212M (SOD, DLF, IEF)  
 C MS PURE GOLD 2003 (DLF, HYF, IEF)  
 W4 STARMAN B025  
 K74 BLAZE DOMET 0131

BW	WW	YW	Milk	M&G	YSC	REA	IMF	CHB
2.3	49	90	31	56	0.9	0.55	0.047	99

B080 is a young bull we raised that is showing great promise as a herd bull. His first sons have tremendous muscle shape and have performed in the feed pen. He himself as a yearling bull gained over 5 lbs. a day on test at ST Genetics Bull Test in Navasota. His dam is a great producing daughter of 4011.



**Additional Reference Sires**

**C 212 DOMINO 4011 ET**

BW: 1.8 WW: 50 YW: 86 Milk: 27 M&G: 52 YSC: 0.8 REA: 0.61 IMF: -0.033 CHB: 120

**CHURCHILL DOMINO 166Y**

BW: 5.8 WW: 55 YW: 74 Milk: 26 M&G: 53 YSC: 1.1 REA: 0.28 IMF: 0.017 CHB: 95

**KGB TFR KR SENSATION 028X 1600**

BW: 1.3 WW: 59 YW: 91 Milk: 42 M&G: 72 YSC: 1.5 REA: 0.37 IMF: 0.017 CHB: 123

**FS ADVANCE 3001A ET**

BW: 1.8 WW: 52 YW: 86 Milk: 33 M&G: 59 YSC: 1.1 REA: 0.356 IMF: -0.013 CHB: 114

**FS ADVANCE 353A**

BW: 3.5 WW: 50 YW: 74 Milk: 31 M&G: 57 YSC: 0.9 REA: 0.30 IMF: -0.033 CHB: 104

**W4 955 DOMINO 136Y 2ET**

BW: 3.4 WW: 54 YW: 88 Milk: 30 M&G: 57 YSC: 0.9 REA: 0.54 IMF: 0.027 CHB: 120

**W4 S109 ADVANCE 502Y ET**

BW: 4.5 WW: 50 YW: 85 Milk: 20 M&G: 45 YSC: 0.4 REA: 0.42 IMF: -0.023 CHB: 113

**CL 1 DOMINO 7177E**

BW: -0.1 WW: 47 YW: 77 Milk: 31 M&G: 55 YSC: 1.3 REA: 0.33 IMF: 0.047 CHB: 99

**CHURCHILL TOP SPEED 548C ET**

BW: 3.5 WW: 62 YW: 101 Milk: 24 M&G: 55 YSC: 0.6 REA: 0.64 IMF: -0.011 CHB: 114





**Lot 1**

## 1 W4 4312 MILES DOM 106F ET

DOB: 03/28/2018 Bull 44059507 Tattoo: 106F

C MILES MCKEE 2103 ET {CHB}{DLF,HYF,IEF,MSUDF}  
**C BAILEES MILES 4312 ET {DLF,HYF,IEF,MSUDF}**  
 43487323 BR BAILEE 1066 ET {DLF,HYF,IEF}

GH RAMBO 279R {SOD}{CHB}{DLF,HYF,IEF}  
**W4 279R DOMINET 9520 ET {DLF,HYF,IEF}**  
 43074648 GKB MISS PURE GOLD B239 ET {DLF,HYF,IEF}

BW	WW	YW	Milk	M&G	YSC	REA	MARB	CHB
4.9	60	94	29	59	0.8	0.71	-0.042	119

Birth Weight: 70    Weaning Weight: 705    Yearling Weight: 1360



**Lot 2**

## 2 W4 310 RIBEYE F002

DOB: 02/01/2018 Bull 44059511 Tattoo: F002

NJW 98S R117 RIBEYE 88X ET {SOD}{DLF,HYF,IEF,MSUDF}  
**BAR-S-SOF MR 88X 310 {DLF,HYF,IEF}**  
 43396221 BHF MISS KOOTER 602 {DLF,HYF,IEF}

B CHURCHILL 6033  
**W4 6033 MS ADVANCE C145**  
 43765277 -S MS GOLD ADVANCE 4115 T211

BW	WW	YW	Milk	M&G	YSC	REA	MARB	CHB
4	53	83	28	55	0.7	0.57	-0.017	111

Birth Weight: 66    Weaning Weight: 570    Yearling Weight: 1125



**Lot 3**

## 3 W4 4011 BEN F003

DOB: 03/02/2018 Bull 44114211 Tattoo: F003

CL 1 DOMINO 212M {SOD}{DLF,IEF}  
**C 212 DOMINO 4011 ET {SOD}{CHB}{DLF,HYF,IEF}**  
 42473400 C MS PURE GOLD 2003 {DLF,HYF,IEF}

CHURCHILL DOMINO 166Y {DLF,HYF,IEF,MSUDF}  
**W4 166Y DOMET C059**  
 43765300 W4 S025 DOMET W567

BW	WW	YW	Milk	M&G	YSC	REA	MARB	CHB
3.2	47	76	27	50	1	0.4	-0.022	106

Birth Weight: 60    Weaning Weight: 565    Yearling Weight: 1170



**Lot 4**

## 4 W4 310 RIBEYE F005

DOB: 03/03/2018 Bull 44114212 Tattoo: F005

NJW 98S R117 RIBEYE 88X ET {SOD}{DLF,HYF,IEF,MSUDF}  
**BAR-S-SOF MR 88X 310 {DLF,HYF,IEF}**  
 43396221 BHF MISS KOOTER 602 {DLF,HYF,IEF}

CHURCHILL DOMINO 166Y {DLF,HYF,IEF,MSUDF}  
**W4 166Y DOMET C052**  
 43765304 H LADY WILDFIRE 6123

BW	WW	YW	Milk	M&G	YSC	REA	MARB	CHB
3.7	53	78	27	54	0.9	0.39	-0.012	103

Birth Weight: 74    Weaning Weight: 578    Yearling Weight: 1204

## 5 W4 4011 BEN F007

DOB: 03/03/2018 Bull 44114213 Tattoo: F007

CL 1 DOMINO 212M {SOD}{DLF,IEF}  
**C 212 DOMINO 4011 ET {SOD}{CHB}{DLF,HYF,IEF}**  
 42473400 C MS PURE GOLD 2003 {DLF,HYF,IEF}

BAR-S-SOF MR 88X 310 {DLF,HYF,IEF}  
**W4 310 MS RIBEYE C303**  
 43764562 L STAR MISS ROBINHOOD 408 W028

BW	WW	YW	Milk	M&G	YSC	REA	MARB	CHB
3	52	87	28	54	1	0.47	-0.022	112

Birth Weight: 70    Weaning Weight: 526    Yearling Weight: 1120





## 6 W4 4011 BIG BEN F010

DOB: 02/01/2018 Bull 44059513 Tattoo: F010

CL 1 DOMINO 212M {SOD}{DLF,IEF}  
**C 212 DOMINO 4011 ET {SOD}{CHB}{DLF,HYF,IEF}**  
 42473400 C MS PURE GOLD 2003 {DLF,HYF,IEF}

DOMINO M823 {DLF,HYF,IEF}  
**MISS DOMINO M527**  
 43597529 MISS DOMINO M223Z

BW	WW	YW	Milk	M&G	YSC	REA	MARB	CHB
3.2	48	80	24	48	0.9	0.42	-0.027	106

Birth Weight: 62 Weaning Weight: 560 Yearling Weight: 1178

## 7 W4 3001 DOMINO F013

DOB: 03/09/2018 Bull 44114214 Tattoo: F013

HH ADVANCE 0002X {SOD}{DLF,HYF,IEF,MSUDF}  
**FS ADVANCE 3001A ET {DLF,HYF,IEF}**  
 43418093 EL MISS ADVANCE 710T {DLF,HYF,IEF}

W4 592 DOMINO 102Y ET {DLF,HYF,IEF,MSUDF}  
**W4 102Y RANCHER GAL C149**  
 43765307 CHURCHILL LADY 7164T

BW	WW	YW	Milk	M&G	YSC	REA	MARB	CHB
3.7	57	91	26	54	1	0.32	0.023	102

Birth Weight: 69 Weaning Weight: 520 Yearling Weight: 1145

## 8 W4 3001 DOMINO F019

DOB: 03/14/2018 Bull 44114215 Tattoo: F019

HH ADVANCE 0002X {SOD}{DLF,HYF,IEF,MSUDF}  
**FS ADVANCE 3001A ET {DLF,HYF,IEF}**  
 43418093 EL MISS ADVANCE 710T {DLF,HYF,IEF}

CL 1 DOMINO 338A {DLF,HYF,IEF}  
**MISS DOMINO M530**  
 43597518 MISS DOMINO M824

BW	WW	YW	Milk	M&G	YSC	REA	MARB	CHB
3.2	54	86	31	58	1.2	0.39	-0.007	105

Birth Weight: 71 Weaning Weight: 525 Yearling Weight: 1156

## 9 W4 3001 ADVANCE F020

DOB: 03/20/2018 Bull 44115760 Tattoo: F020

HH ADVANCE 0002X {SOD}{DLF,HYF,IEF,MSUDF}  
**FS ADVANCE 3001A ET {DLF,HYF,IEF}**  
 43418093 EL MISS ADVANCE 710T {DLF,HYF,IEF}

W4 955 DOMINO 136Y 2ET {DLF,HYF,IEF,MSUDF}  
**W4 136 DOMET B506**  
 43596344 W4 T154 DOMET X171

BW	WW	YW	Milk	M&G	YSC	REA	MARB	CHB
3.8	56	90	27	55	1.1	0.44	-0.002	111

Birth Weight: 62 Weaning Weight: 510 Yearling Weight: 1120

## 10 W4 392A MR BEEF F021

DOB: 03/14/2018 Bull 44114216 Tattoo: F021

CL 1 DOMINO 0141 1ET {SOD}{CHB}{DLF,HYF,IEF}  
**DH DOMINO 392A {DLF,HYF,IEF,MSUDF}**  
 43459361 DH MISS ADVANCE 9156 {DLF,HYF,IEF,MSUDF}

CL 1 DOMINO 052X 1ET {DLF,HYF,IEF}  
**B 52X DOMINETTE 550C**  
 43723425 B AMERICAN HONEY 247Z

BW	WW	YW	Milk	M&G	YSC	REA	MARB	CHB
3.5	55	90	36	63	1	0.48	0.008	105

Birth Weight: 65 Weaning Weight: 562 Yearling Weight: 1148

## 11 W4 4312 B MILES F023

DOB: 03/29/2018 Bull 44115761 Tattoo: F023

C MILES MCKEE 2103 ET {CHB}{DLF,HYF,IEF,MSUDF}  
**C BAILEES MILES 4312 ET {DLF,HYF,IEF,MSUDF}**  
 43487323 BR BAILEE 1066 ET {DLF,HYF,IEF}

C MOLER 6213 ET {DLF,HYF,IEF}  
**W4 6213 DOMINET 9507 ET 3**  
 43074147 GKB 146 MISS MARK B422 {DLF,HYF,IEF}

BW	WW	YW	Milk	M&G	YSC	REA	MARB	CHB
4.4	56	91	27	55	0.8	0.49	-0.022	105

Birth Weight: 69 Weaning Weight: 530 Yearling Weight: 1090

## 12 W4 4312 B MILES F039

DOB: 03/27/2018 Bull 44115762 Tattoo: F039

C MILES MCKEE 2103 ET {CHB}{DLF,HYF,IEF,MSUDF}  
**C BAILEES MILES 4312 ET {DLF,HYF,IEF,MSUDF}**  
 43487323 BR BAILEE 1066 ET {DLF,HYF,IEF}

HH ADVANCE 8203U ET {SOD}{DLF,IEF}  
**W4 8203 MS DOMINO 114Z ET**  
 43516516 W4 MS DOMETTE N534 {DLF,HYF,IEF}

BW	WW	YW	Milk	M&G	YSC	REA	MARB	CHB
5.6	62	94	26	57	1	0.45	-0.017	107

Birth Weight: 66 Weaning Weight: 512 Yearling Weight: 1078



## 13 W4 0387 DOM F040

DOB: 03/27/2018 Bull 44114217 Tattoo: F040

UPS DOMINO 5216 {SOD}{DLF,IEF}  
**DB 5216 DOM 0387 {DLF,HYF,IEF,MSUDF}**  
 43146486 DB MISS DOM 6005

HH ADVANCE 8203U ET {SOD}{DLF,IEF}  
**W4 8203 DOMET 118Y 1ET**  
 43211693 C IDA JO GOLD 5203 ET

BW	WW	YW	Milk	M&G	YSC	REA	MARB	CHB
5.1	56	87	24	52	1.3	0.42	0.008	98

Birth Weight: 66 Weaning Weight: 587 Yearling Weight: 1204





**17 W4 407 ADVANCE DOM F051**  
 DOB: 03/15/2018 Bull 44114223 Tattoo: F051

HH ADVANCE 2125Z {DLF,HYF,IEF}  
 FS ADVANCE 407B {DLF,HYF,IEF}  
 43466166 CL 1 DOMINETTE 057X {DLF,HYF,IEF}  
 CL 1 DOMINO 9125W 1ET {SOD}{DLF,HYF,IEF}  
 B&B L1 DOMINETTE 3128  
 43445060 B&B L1 DOMINETTE 7186

BW	WW	YW	Milk	M&G	YSC	REA	MARB	CHB
2.3	48	79	28	52	1	0.21	0.008	88

Birth Weight: 74 Weaning Weight: 602 Yearling Weight: 1200



**18 W4 407 ADVANCE DOM F052**  
 DOB: 05/15/2018 Bull 44114224 Tattoo: F052

HH ADVANCE 2125Z {DLF,HYF,IEF}  
 FS ADVANCE 407B {DLF,HYF,IEF}  
 43466166 CL 1 DOMINETTE 057X {DLF,HYF,IEF}  
 CL 1 DOMINO 030X 1ET {DLF,HYF,IEF}  
 B&B L1 DOMINETTE 3117A  
 43444945 B&B L1 DOMINETTE 1171

BW	WW	YW	Milk	M&G	YSC	REA	MARB	CHB
2.2	51	82	32	58	1.1	0.23	0.013	89

Birth Weight: 75 Weaning Weight: 569 Yearling Weight: 1189



**19 W4 392A MR BEEF F056**  
 DOB: 03/17/2018 Bull 44114225 Tattoo: F056

CL 1 DOMINO 0141 1ET {SOD}{CHB}{DLF,HYF,IEF}  
 DH DOMINO 392A {DLF,HYF,IEF,MSUDF}  
 43459361 DH MISS ADVANCE 9156 {DLF,HYF,IEF,MSUDF}  
 CL 1 DOMINO 072X {DLF,HYF,IEF}  
 B DOMINETTE 597C  
 43724438 B 5110 DOMINETTE 290Z

BW	WW	YW	Milk	M&G	YSC	REA	MARB	CHB
3.8	58	94	37	66	1.2	0.47	0.008	107

Birth Weight: 70 Weaning Weight: 589 Yearling Weight: 1198

**14 W4 548C TOP SPEED F041**  
 DOB: 03/03/2018 Bull 44114219 Tattoo: F041

H/TSR/CHEZ/FULL THROTTLE ET {DLF,HYF,IEF}  
 CHURCHILL TOP SPEED 548C ET {DLF,HYF,IEF,MSUDF}  
 43586918 CHURCHILL LADY 002X ET {DLF,HYF,IEF,MSUDF}  
 DH ADVANCE 9030 {DLF,HYF,IEF}  
 DH MS ADVANCE 2215  
 43413795 DH DOMINETTE 0117

BW	WW	YW	Milk	M&G	YSC	REA	MARB	CHB
3.1	50	84	23	48	0.7	0.4	-0.002	107

Birth Weight: 68 Weaning Weight: 523 Yearling Weight: 1174

**15 W4 548C TOP SPEED F045**  
 DOB: 03/18/2018 Bull 44114221 Tattoo: F045

H/TSR/CHEZ/FULL THROTTLE ET {DLF,HYF,IEF}  
 CHURCHILL TOP SPEED 548C ET {DLF,HYF,IEF,MSUDF}  
 43586918 CHURCHILL LADY 002X ET {DLF,HYF,IEF,MSUDF}  
 CHURCHILL RANCHER 592R {SOD}{DLF,IEF}  
 B KATE 230Z  
 43291831 B LITTLE ROCK 926

BW	WW	YW	Milk	M&G	YSC	REA	MARB	CHB
3.3	56	93	23	51	0.8	0.46	0.013	111

Birth Weight: 71 Weaning Weight: 536 Yearling Weight: 1150



**16 W4 392A MR BEEF F049**  
 DOB: 03/16/2018 Bull 44114222 Tattoo: F049

CL 1 DOMINO 0141 1ET {SOD}{CHB}{DLF,HYF,IEF}  
 DH DOMINO 392A {DLF,HYF,IEF,MSUDF}  
 43459361 DH MISS ADVANCE 9156 {DLF,HYF,IEF,MSUDF}  
 B EXCEL 20 ET {DLF,HYF,IEF}  
 B LADY EXCELL 549C  
 43722940 B BALLERINA 915

BW	WW	YW	Milk	M&G	YSC	REA	MARB	CHB
4.3	55	96	32	60	0.9	0.37	0.008	102

Birth Weight: 74 Weaning Weight: 569 Yearling Weight: 1189



**20****W4 3001 ADVANCE F059**

DOB: 03/16/2018 Bull 44114226 Tattoo: F059

HH ADVANCE 0002X {SOD}{DLF,HYF,IEF,MSUDF}  
**FS ADVANCE 3001A ET {DLF,HYF,IEF}**  
 43418093 EL MISS ADVANCE 710T {DLF,HYF,IEF}

W4 592 DOMINO 102Y ET {DLF,HYF,IEF,MSUDF}  
**W4 102Y RANCHERS GAL C111**  
 43765716 W4 6213 DOMET Y663

BW	WW	YW	Milk	M&G	YSC	REA	MARB	CHB
3.8	58	91	27	56	0.9	0.37	0.008	106

Birth Weight: 74 Weaning Weight: 530 Yearling Weight: 1145

**Lot 21****21****W4 166 ADVANCE F065**

DOB: 03/17/2018 Bull 44114228 Tattoo: F065

HH ADVANCE 8203U ET {SOD}{DLF,IEF}  
**CHURCHILL DOMINO 166Y {DLF,HYF,IEF,MSUDF}**  
 43187895 CHURCHILL LADY 943W {DLF,HYF,IEF}

DB 5216 DOM 0387 {DLF,HYF,IEF,MSUDF}  
**W4 0387 DOMET B183**  
 43520614 W4 8203 DOMET 139Y ET

BW	WW	YW	Milk	M&G	YSC	REA	MARB	CHB
4.8	51	77	26	51	1.1	0.27	0.028	96

Birth Weight: 79 Weaning Weight: 545 Yearling Weight: 1184

**22****W4 0387 DOM F067**

DOB: 03/16/2018 Bull 44114229 Tattoo: F067

UPS DOMINO 5216 {SOD}{DLF,IEF}  
**DB 5216 DOM 0387 {DLF,HYF,IEF,MSUDF}**  
 43146486 DB MISS DOM 6005

MCR L91 MARK DOMINO 522 ET  
**W4 522 DOMET U578**  
 43014870 W4 MVP LADY N446

BW	WW	YW	Milk	M&G	YSC	REA	MARB	CHB
3.9	49	84	24	49	1.1	0.36	0.013	94

Birth Weight: 77 Weaning Weight: 520 Yearling Weight: 1130

**23****W4 4312 B MILES F068**

DOB: 04/08/2018 Bull 44115763 Tattoo: F068

C MILES MCKEE 2103 ET {CHB}{DLF,HYF,IEF,MSUDF}  
**C BAILEES MILES 4312 ET {DLF,HYF,IEF,MSUDF}**  
 43487323 BR BAILEE 1066 ET {DLF,HYF,IEF}

W4 613 DOMINO W219  
**W4 W219 MS BANKER D076**  
 43834194 W4 592 DOMET Y576

BW	WW	YW	Milk	M&G	YSC	REA	MARB	CHB
4.8	57	98	27	56	0.9	0.52	-0.012	112

Birth Weight: 72 Weaning Weight: 511 Yearling Weight: 1100

**Lot 24****24****W4 3001 ADVANCE F071**

DOB: 03/17/2018 Bull 44114230 Tattoo: F071

HH ADVANCE 0002X {SOD}{DLF,HYF,IEF,MSUDF}  
**FS ADVANCE 3001A ET {DLF,HYF,IEF}**  
 43418093 EL MISS ADVANCE 710T {DLF,HYF,IEF}

HH ADVANCE 8203U ET {SOD}{DLF,IEF}  
**W4 8203 DOMET B592**  
 43727096 Z 8110 STEP AHEAD 668

BW	WW	YW	Milk	M&G	YSC	REA	MARB	CHB
4.5	59	92	25	55	1.2	0.29	0.003	104

Birth Weight: 62 Weaning Weight: 588 Yearling Weight: 1203

**25****W4 548C TOP SPEED F074**

DOB: 03/17/2018 Bull 44114231 Tattoo: F074

H/TSR/CHEZ/FULL THROTTLE ET {DLF,HYF,IEF}  
**CHURCHILL TOP SPEED 548C ET {DLF,HYF,IEF,MSUDF}**  
 43586918 CHURCHILL LADY 002X ET {DLF,HYF,IEF,MSUDF}

HH ADVANCE 6164S {DLF,IEF}  
**WHF ADVANCETTE 8107**  
 42953978 WHF DOMINETTE 2088

BW	WW	YW	Milk	M&G	YSC	REA	MARB	CHB
4.4	53	84	23	50	0.4	0.45	-0.017	111

Birth Weight: 65 Weaning Weight: 511 Yearling Weight: 1142

**26****W4 548C TOP SPEED F075**

DOB: 03/17/2018 Bull 44114232 Tattoo: F075

H/TSR/CHEZ/FULL THROTTLE ET {DLF,HYF,IEF}  
**CHURCHILL TOP SPEED 548C ET {DLF,HYF,IEF,MSUDF}**  
 43586918 CHURCHILL LADY 002X ET {DLF,HYF,IEF,MSUDF}

CL 1 DOMINO 863U 1ET {DLF,IEF}  
**DH DOMINETTE 1216Y**  
 43308257 DH MISS ADVANCE 1178

BW	WW	YW	Milk	M&G	YSC	REA	MARB	CHB
2.8	48	75	23	47	0.7	0.33	-0.007	101

Birth Weight: 71 Weaning Weight: 540 Yearling Weight: 1125

**27****W4 4312 B MILES F076**

DOB: 03/18/2018 Bull 44114233 Tattoo: F076

C MILES MCKEE 2103 ET {CHB}{DLF,HYF,IEF,MSUDF}  
**C BAILEES MILES 4312 ET {DLF,HYF,IEF,MSUDF}**  
 43487323 BR BAILEE 1066 ET {DLF,HYF,IEF}

GOLDEN OAK OUTCROSS 18U {SOD}{CHB}{DLF,HYF,IEF,MSUDF}  
**W4 18U DOMINETTE 103A ET**  
 P43536536 GKB 146 MISS MARK B422 {DLF,HYF,IEF}

BW	WW	YW	Milk	M&G	YSC	REA	MARB	CHB
5	62	101	29	60	1	0.56	-0.012	107

Birth Weight: 78 Weaning Weight: 547 Yearling Weight: 1174





**28 W4 D080 DOMINO F078**  
 DOB: 03/19/2018 Bull 44114234 Tattoo: F078

W4 -S ADVANCE DOM W168 ET  
**W4 W168 DOMINO B080 {DLF,HYF,IEF,MSUDF}**  
 43520661 W4 4011 DOMET T127

CL 1 DOMINO 955W {SOD}CHB{DLF,HYF,IEF}  
**W4 955W LADY C009 {DLF,HYF,IEF}**  
 43635709 CHURCHILL LADY 2100Z {DLF,HYF,IEF}

BW	WW	YW	Milk	M&G	YSC	REA	MARB	CHB
4	55	96	29	57	0.9	0.43	0.028	97

Birth Weight: 74 Weaning Weight: 540 Yearling Weight: 1144

**29 W4 0387 DOM F082**  
 DOB: 03/15/2018 Bull 44114235 Tattoo: F082

UPS DOMINO 5216 {SOD}{DLF,IEF}  
**DB 5216 DOM 0387 {DLF,HYF,IEF,MSUDF}**  
 43146486 DB MISS DOM 6005

W4 4011 DOMINO T154 {DLF,HYF,IEF}  
**W4 T154 LADY DOMET B076**  
 43508754 W4 4011 DOMET T147

BW	WW	YW	Milk	M&G	YSC	REA	MARB	CHB
3.6	51	88	22	48	1.2	0.51	0.003	103

Birth Weight: 75 Weaning Weight: 500 Yearling Weight: 1125



**30 W4 3001 ADVANCE F085**  
 DOB: 03/14/2018 Bull 44059517 Tattoo: F085

HH ADVANCE 0002X {SOD,DLF,HYF,IEF,MSUDF}  
**FS ADVANCE 3001A ET {DLF,HYF,IEF}**  
 43418093 EL MISS ADVANCE 710T {DLF,HYF,IEF}

W4 592 DOMINO 102Y ET {DLF,HYF,IEF,MSUDF}  
**W4 102Y DOMET B645**  
 43727031 W4 613 DOMET U520

BW	WW	YW	Milk	M&G	YSC	REA	MARB	CHB
3.5	58	94	26	55	1.0	0.38	0.12	105

Birth Weight: 79 Weaning Weight: 610 Yearling Weight: 1230

**31 W4 B080 DOMINO F093**  
 DOB: 03/21/2018 Bull 44114238 Tattoo: F093

W4 -S ADVANCE DOM W168 ET  
**W4 W168 DOMINO B080 {DLF,HYF,IEF,MSUDF}**  
 43520661 W4 4011 DOMET T127

BPX ADVANCE 1033 {DLF,HYF,IEF}  
**DH MISS ADVANCE 4302**  
 43587856 DH DOMINETTE 9190

BW	WW	YW	Milk	M&G	YSC	REA	MARB	CHB
1.5	44	76	27	48	0.9	0.37	0.033	97

Birth Weight: 74 Weaning Weight: 568 Yearling Weight: 1189

**32 W4 B080 DOMINO F094**  
 DOB: 04/21/2018 Bull 44115764 Tattoo: F094

W4 -S ADVANCE DOM W168 ET  
**W4 W168 DOMINO B080 {DLF,HYF,IEF,MSUDF}**  
 43520661 W4 4011 DOMET T127

W4 955 DOMINO 136Y 2ET {DLF,HYF,IEF,MSUDF}  
**W4 136Y MS DOMINO C062**  
 43764594 B LADY BULLSEYE 705

BW	WW	YW	Milk	M&G	YSC	REA	MARB	CHB
2.4	44	79	27	49	0.8	0.36	0.028	100

Birth Weight: 75 Weaning Weight: 560 Yearling Weight: 1170

**33 W4 106D HOMETOWN F096**  
 DOB: 03/21/2018 Bull 44114240 Tattoo: F096

C 10Y HOMETOWN 4108 {DLF,HYF,IEF}  
**W4 4108 HOMETOWN 106D ET {DLF,HYF,IEF,MSUDF}**  
 43742956 HH MISS ADVANCE 9168W {DLF,HYF,IEF}

W4 613 DOMINO W219  
**W4 W219 DOMET D003**  
 43930650 L STAR DOMINETTE 212M S274

BW	WW	YW	Milk	M&G	YSC	REA	MARB	CHB
3.3	47	82	26	50	1	0.33	0.008	100

Birth Weight: 70 Weaning Weight: 589 Yearling Weight: 1206



**34 W4 548C TOP SPEED F101**  
 DOB: 03/22/2018 Bull 44114242 Tattoo: F101

H/TSR/CHEZ/FULL THROTTLE ET {DLF,HYF,IEF}  
**CHURCHILL TOP SPEED 548C ET {DLF,HYF,IEF,MSUDF}**  
 43586918 CHURCHILL LADY 002X ET {DLF,HYF,IEF,MSUDF}

BAR-S-SOF MR 88X 310 {DLF,HYF,IEF}  
**W4 310 LADY DOM 104C ET**  
 43595927 W4 8203 DOMET 122Y 1ET {DLF,HYF,IEF}

BW	WW	YW	Milk	M&G	YSC	REA	MARB	CHB
4	59	91	25	54	0.7	0.53	-0.012	113

Birth Weight: 75 Weaning Weight: 608 Yearling Weight: 1236



## 35 W4 106D HOMETOWN F104

DOB: 03/24/2018 Bull 44114244 Tattoo: F104

C 10Y HOMETOWN 4108 {DLF,HYF,IEF}  
W4 4108 HOMETOWN 106D ET {DLF,HYF,IEF,MSUDF}  
43742956 HH MISS ADVANCE 9168W {DLF,HYF,IEF}

W4 955 DOMINO 136Y 2ET {DLF,HYF,IEF,MSUDF}  
W4 136Y DOMET D083  
43931807 W4 T15 DOMET X168

BW	WW	YW	Milk	M&G	YSC	REA	MARB	CHB
3.1	47	76	30	54	1	0.33	0.018	102

Birth Weight: 69 Weaning Weight: 520 Yearling Weight: 1148

## 36 W4 392A MR BEEF F110

DOB: 03/24/2018 Bull 44114245 Tattoo: F110

CL 1 DOMINO 0141 1ET {SOD}{CHB}{DLF,HYF,IEF}  
DH DOMINO 392A {DLF,HYF,IEF,MSUDF}  
43459361 DH MISS ADVANCE 9156 {DLF,HYF,IEF,MSUDF}

UPS ADVANCE 2622 {DLF,HYF,IEF}  
B MISS ADVANCE 590C  
43724429 B AMERICAN HONEY 36X

BW	WW	YW	Milk	M&G	YSC	REA	MARB	CHB
2.3	51	90	37	63	1	0.41	0.008	101

Birth Weight: 74 Weaning Weight: 540 Yearling Weight: 1170

## 37 W4 548C TOP SPEED F113

DOB: 04/30/2018 Bull 44115765 Tattoo: F113

H/TSR/CHEZ/FULL THROTTLE ET {DLF,HYF,IEF}  
CHURCHILL TOP SPEED 548C ET {DLF,HYF,IEF,MSUDF}  
43586918 CHURCHILL LADY 002X ET {DLF,HYF,IEF,MSUDF}

CHURCHILL MVP 188 {SOD}{CHB}{DLF,HYF,IEF}  
W4 188 DOMET S600  
42820367 B 6103 DOMINETTE 189L

BW	WW	YW	Milk	M&G	YSC	REA	MARB	CHB
4.1	49	83	20	45	0.6	0.36	-0.002	107

Birth Weight: 69 Weaning Weight: 510 Yearling Weight: 1095

## 38 W4 B080 DOMINO F116 ET

DOB: 04/02/2018 Bull 44114247 Tattoo: F116

C MILES MCKEE 2103 ET {CHB}{DLF,HYF,IEF,MSUDF}  
C BAILEES MILES 4312 ET {DLF,HYF,IEF,MSUDF}  
43487323 BR BAILEE 1066 ET {DLF,HYF,IEF}

CRR HELTON 980 {SOD}{DLF,HYF,IEF}  
CHURCHILL LADY 2100Z {DLF,HYF,IEF}  
43282072 CHURCHILL LADY 8166U

BW	WW	YW	Milk	M&G	YSC	REA	MARB	CHB
6.8	69	112	28	62	0.8	0.44	-0.017	106

Birth Weight: 75 Weaning Weight: 583 Yearling Weight: 1200

## 39 W4 W219 BANKER F122

DOB: 04/05/2018 Bull 44114249 Tattoo: F122

H BANKER 613 ET {DLF,HYF,IEF}  
W4 613 DOMINO W219  
43020572 W4 LADY N074

C MOLER 6213 ET {DLF,HYF,IEF}  
W4 6213 DOMET 512Y ET  
43412377 GKB MISS PURE GOLD B239 ET {DLF,HYF,IEF}

BW	WW	YW	Milk	M&G	YSC	REA	MARB	CHB
4.3	42	79	23	45	0.6	0.41	-0.017	112

Birth Weight: 77 Weaning Weight: 550 Yearling Weight: 1168

## 40 W4 W219 BANKER F125

DOB: 05/08/2018 Bull 44115766 Tattoo: F125

H BANKER 613 ET {DLF,HYF,IEF}  
W4 613 DOMINO W219  
43020572 W4 LADY N074

W4 -S ADVANCE DOM W168 ET  
W4 W168 DOMET Z527  
43491653 LBJ HUSKER MAID 614

BW	WW	YW	Milk	M&G	YSC	REA	MARB	CHB
3.6	40	78	25	45	0.7	0.37	0.008	108

Birth Weight: 70 Weaning Weight: 510 Yearling Weight: 1113

## 41 W4 C/C LUCKY F126

DOB: 04/15/2018 Bull 43900500 Tattoo: F126

C MILES MCKEE 2103 ET {CHB}{DLF,HYF,IEF,MSUDF}  
C BAILEES MILES 4312 ET {DLF,HYF,IEF,MSUDF}  
43487323 BR BAILEE 1066 ET {DLF,HYF,IEF}

ECR L18 EXTRA DEEP 9279 {SOD}{CHB}{DLF,HYF,IEF}  
W4 9279 LADY JASMINE 100D  
43735388 CHURCHILL ILR LADY 2115Z

BW	WW	YW	Milk	M&G	YSC	REA	MARB	CHB
4.4	64	101	34	66	0.9	0.67	-0.017	118

Birth Weight: 60 Weaning Weight: 538 Yearling Weight: 1156



## 42 W4 392A MR BEEF F128

DOB: 04/10/2018 Bull 44114251 Tattoo: F128

CL 1 DOMINO 0141 1ET {SOD}{CHB}{DLF,HYF,IEF}  
DH DOMINO 392A {DLF,HYF,IEF,MSUDF}  
43459361 DH MISS ADVANCE 9156 {DLF,HYF,IEF,MSUDF}

B 72X DOMINO 50Z {DLF,HYF,IEF}  
B DOMINETTE 552C  
43724531 B MISTY ROBIN 111Y

BW	WW	YW	Milk	M&G	YSC	REA	MARB	CHB
3.5	57	94	32	61	1	0.44	0.018	106

Birth Weight: 66 Weaning Weight: 600 Yearling Weight: 1205

## 43 W4 B080 DOMINO F131

DOB: 04/16/2018 Bull 44114253 Tattoo: F131

W4 -S ADVANCE DOM W168 ET  
W4 W168 DOMINO B080 {DLF,HYF,IEF,MSUDF}  
43520661 W4 4011 DOMET T127

CL 1 DOMINO 052X 1ET {DLF,HYF,IEF}  
B 052X DOMINETTE 466B  
43504825 B MISS MOM 59X

BW	WW	YW	Milk	M&G	YSC	REA	MARB	CHB
2.4	42	71	29	50	0.9	0.37	0.023	95

Birth Weight: 75 Weaning Weight: 580 Yearling Weight: 1190



**44****W4 3001 ADVANCE F132**

DOB: 04/16/2018 Bull 44114254 Tattoo: F132

HH ADVANCE 0002X {SOD}{DLF,HYF,IEF,MSUDF}  
**FS ADVANCE 3001A ET {DLF,HYF,IEF}**  
 43418093 EL MISS ADVANCE 710T {DLF,HYF,IEF}

BAR-S-SOF MR 88X 310 {DLF,HYF,IEF}  
**W4 310 MS RIBEYE C015**  
 43765295 CHURCHILL LADY 162Y

BW	WW	YW	Milk	M&G	YSC	REA	MARB	CHB
3.6	59	89	30	59	1.1	0.41	-0.002	109

Birth Weight: 69 Weaning Weight: 570 Yearling Weight: 1204

**45****W4 407 ANVANCE F133**

DOB: 04/17/2018 Bull 44114256 Tattoo: F133

HH ADVANCE 2125Z {DLF,HYF,IEF}  
**FS ADVANCE 407B {DLF,HYF,IEF}**  
 43466166 CL 1 DOMINETTE 057X {DLF,HYF,IEF}

HH ADVANCE 1207Y {DLF,HYF,IEF}  
**KB L1 DOMINETTE 3137 A**  
 43369770 KB L1 DOMINETTE 1131Y {DOD}

BW	WW	YW	Milk	M&G	YSC	REA	MARB	CHB
2.9	49	78	28	53	1	0.17	-0.027	93

Birth Weight: 66 Weaning Weight: 589 Yearling Weight: 1211

**46****W4 0387 DOM F139**

DOB: 04/23/2018 Bull 44114257 Tattoo: F139

UPS DOMINO 5216 {SOD}{DLF,IEF}  
**DB 5216 DOM 0387 {DLF,HYF,IEF,MSUDF}**  
 43146486 DB MISS DOM 6005

W4 4011 DOMINO S025 {DLF,IEF}  
**W4 S025 DOMET Y689**  
 43314203 H LADY DOMINO 6048

BW	WW	YW	Milk	M&G	YSC	REA	MARB	CHB
4	51	81	25	50	1.2	0.42	0.008	94

Birth Weight: 74 Weaning Weight: 580 Yearling Weight: 1184

**47****W4 A311 DOMINO F144**

DOB: 04/25/2018 Bull 44114261 Tattoo: F144

CL 1 DOMINO 860U {SOD}{DLF,HYF,IEF}  
**W4 860 DOMINO A311 {DLF,HYF,IEF,MSUDF}**  
 43728065 C 552 MISS DOM 5011

HH ADVANCE 8203U ET {SOD}{DLF,IEF}  
**W4 8203 DOMET A500**  
 43517294 W4 6213 DOMET 9515 ET 12 {DLF,HYF,IEF}

BW	WW	YW	Milk	M&G	YSC	REA	MARB	CHB
4.6	52	82	21	47	0.8	0.34	-0.017	103

Birth Weight: 75 Weaning Weight: 620 Yearling Weight: 1254

**48****W4 106D HOMETOWN F145**

DOB: 05/24/2018 Bull 44115767 Tattoo: F145

C 10Y HOMETOWN 4108 {DLF,HYF,IEF}  
**W4 4108 HOMETOWN 106D ET {DLF,HYF,IEF,MSUDF}**  
 43742956 HH MISS ADVANCE 9168W {DLF,HYF,IEF}

W4 613 DOMINO W219  
**W4 W219 DOMET D004**  
 43930653 W4 4011 DOMET U251

BW	WW	YW	Milk	M&G	YSC	REA	MARB	CHB
3.2	45	79	28	50	1	0.34	0.003	103

Birth Weight: 68 Weaning Weight: 506 Yearling Weight: 1087

**49****W4 A311 DOMINO F150**

DOB: 04/28/2018 Bull 44114263 Tattoo: F150

CL 1 DOMINO 860U {SOD}{DLF,HYF,IEF}  
**W4 860 DOMINO A311 {DLF,HYF,IEF,MSUDF}**  
 43728065 C 552 MISS DOM 5011

HH ADVANCE 5061R ET {CHB}{DLF,IEF}  
**-S MISS ADVANCE DOM 4029P U211 {DLF,HYF,IEF}**  
 42945629 HH MISS ADVANCE 4029P ET {DLF,HYF,IEF}

BW	WW	YW	Milk	M&G	YSC	REA	MARB	CHB
3.5	52	89	27	53	0.9	0.54	-0.032	108

Birth Weight: 69 Weaning Weight: 562 Yearling Weight: 1170

**50****W4 B080 DOMINO F153**

DOB: 05/04/2018 Bull 44114265 Tattoo: F153

W4 -S ADVANCE DOM W168 ET  
**W4 W168 DOMINO B080 {DLF,HYF,IEF,MSUDF}**  
 43520661 W4 4011 DOMET T127

CL 1 DOMINO 052X 1ET {DLF,HYF,IEF}  
**B 052X DOMINO 456B**  
 43504818 B KATE 139Y

BW	WW	YW	Milk	M&G	YSC	REA	MARB	CHB
2.6	46	80	30	53	0.9	0.39	0.038	98

Birth Weight: 78 Weaning Weight: 523 Yearling Weight: 1125

**51****W4 0387 DOM F154**

DOB: 05/05/2018 Bull 44114266 Tattoo: F154

UPS DOMINO 5216 {SOD}{DLF,IEF}  
**DB 5216 DOM 0387 {DLF,HYF,IEF,MSUDF}**  
 43146486 DB MISS DOM 6005

HH ADVANCE 8203U ET {SOD}{DLF,IEF}  
**W4 8203 DOMET 517Y ET**  
 43412398 RCR AURUM MARY 02086

BW	WW	YW	Milk	M&G	YSC	REA	MARB	CHB
5.3	56	88	22	51	1.4	0.37	0.008	94

Birth Weight: 66 Weaning Weight: 562 Yearling Weight: 1185





**52**

**W4 B080 DOMINO F156**

DOB: 05/07/2018 Bull P44114268 Tattoo: F156

W4 -S ADVANCE DOM W168 ET  
**W4 W168 DOMINO B080 {DLF,HYF,IEF,MSUDF}**  
 43520661 W4 4011 DOMET T127

HH ADVANCE 8203U ET {SOD,DLF,IEF}  
**W4 8203 DOMET 122Y 1ET {DLF,HYF,IEF}**  
 P43211694 GKB 146 MISS MARK B422 {DLF,HYF,IEF}

BW	WW	YW	Milk	M&G	YSC	REA	MARB	CHB
3.6	50	82	25	50	1	0.36	0.038	94

Birth Weight: 68 Weaning Weight: 620 Yearling Weight: 1285

**53**

**W4 407 ADVANCE DOM F161**

DOB: 05/07/2018 Bull 44114271 Tattoo: F161

HH ADVANCE 2125Z {DLF,HYF,IEF}  
**FS ADVANCE 407B {DLF,HYF,IEF}**  
 43466166 CL 1 DOMINETTE 057X {DLF,HYF,IEF}

CL 1 DOMINO 465P {DLF,HYF,IEF}  
**MISS DOMINO M 202**  
 43338029 MISS DOMINO M013 {DLF,HYF,IEF}

BW	WW	YW	Milk	M&G	YSC	REA	MARB	CHB
2.8	48	77	26	50	1	0.24	-0.022	95

Birth Weight: 65 Weaning Weight: 584 Yearling Weight: 1205



**54**

**W4 3B DOMINO 8351**

DOB: Bull PENDING Tattoo: 8351

CL1 DOMINO 955W {CHB, SOD, DLF, HYF, IEF}  
**W4 955 DOMINO 101B ET {DLF, HYF, IEF}**  
 43619785 WR 279R DOMINET 9520 ET {DLF, HYF, IEF}

TH 223 711 CONQUER 409X ET {DLF, HYF, IEF}  
**LANGFORDS WPF LADY 4351 ET**  
 43591537 THF 618 45P MS DOM 90W {DLF, HYF, IEF}

BW	WW	YW	Milk	M&G	YSC	REA	MARB	CHB
3.8	56	83	28	56		.63	-.03	99

Birth Weight: 65 Weaning Weight: 580 Yearling Weight: 1210



**55**

**W4 3B DOMINO 8519**

DOB: Bull PENDING Tattoo: 8519

CL1 DOMINO 955W {CHB, SOD, DLF, HYF, IEF}  
**W4 955 DOMINO 101B ET {DLF, HYF, IEF}**  
 43619785 W4 27SR DOMINET 9520 ET {DLF, HYF, IEF}

W4 613 DOMINO W219  
**W4 W219 DOMET A519**  
 43517308 W4 6033 DOMET U739

BW	WW	YW	Milk	M&G	YSC	REA	MARB	CHB
2.8	47	77	24	48		.54	-.002	106

Birth Weight: 68 Weaning Weight: 602 Yearling Weight: 1218

**56**

**W4 3B DOMINO 8537**

DOB: Bull PENDING Tattoo: 8537

CL1 DOMINO 955W {CHB, SOD, DLF, HYF, IEF}  
**W4 955 DOMINO 101B ET {ELF, HYF, IEF}**  
 43619785 W4 279R DOMINET 9520 ET {DLF, HYF, IEF}

W4 613 DOMINO W219  
**W4 W219 DOMET A537**  
 43617260 C COWGIRL 7096

BW	WW	YW	Milk	M&G	YSC	REA	MARB	CHB
3.2	45	85	26	50		0.75	0.01	106

Birth Weight: 74 Weaning Weight: 583 Yearling Weight: 1190



**57**

**W4 3B DOMINO 8546**

DOB: Bull PENDING Tattoo: 8546

CL1 DOMINO 955W {CHB, SOD, DLF, HYF, IEF}  
**W4 955 DOMINO 101B ET {DLF, HYF, IEF}**  
 43619785 W4 279R DOMINET 9520 ET {CLF, HYF, IEF}

WR 4011 DOMINO T154 {DLF, HYF, IEF}  
**W4 T154 DOMET A546**  
 43617182 L STAR MARKETTE 1116 R381

BW	WW	YW	Milk	M&G	YSC	REA	MARB	CHB
3.1	49	77	27	51		.63	.00	108

Birth Weight: 70 Weaning Weight: 574 Yearling Weight: 1180





**58** **SHL100FREDBULL002BOFDOMETB505**  
 DOB: 03/21/2018 Bull 44109771 Tattoo: 100F

CHURCHILL RED BULL 200Z {SOD,CHB,DLF,HYF,IEF,MSUDF}  
**W4 200Z RED DOMINO B002 {DLF,HYF,IEF,MSUDF}**  
 43520599 CHURCHILL LADY 2100Z {DLF,HYF,IEF}

W4 613 DOMINO W219  
**W4 W219 DOMET B505**  
 43596311 WR 188 DOMET R005

BW	WW	YW	Milk	M&G	YSC	REA	MARB	CHB
3.5	49	82	24	48	0.8	0.31	0.03	101

Birth Weight: 62 Weaning Weight: 600 Yearling Weight: 1178



**59** **SHL105FREDBULL002BOFSUSZY0100**  
 DOB: 03/23/2018 Bull 44109803 Tattoo: 105F

CHURCHILL RED BULL 200Z {SOD,CHB,DLF,HYF,IEF,MSUDF}  
**W4 200Z RED DOMINO B002 {DLF,HYF,IEF,MSUDF}**  
 43520599 CHURCHILL LADY 2100Z {DLF,HYF,IEF}

CJH HARLAND 408 {SOD,DLF,HYF,IEF,MSUDF}  
**FOUR L 408 MISS Z0039**  
 43326833 FOUR L 157 MISS X0060

BW	WW	YW	Milk	M&G	YSC	REA	MARB	CHB
3.9	51	81	29	54	1.2	0.19	0.04	94

Birth Weight: 65 Weaning Weight: 569 Yearling Weight: 1201



**60** **SHL161FREDBULL002BOFDOMETB607**  
 DOB: 04/10/2018 Bull 44109784 Tattoo: 161F

CHURCHILL RED BULL 200Z {SOD,CHB,DLF,HYF,IEF,MSUDF}  
**W4 200Z RED DOMINO B002 {DLF,HYF,IEF,MSUDF}**  
 43520599 CHURCHILL LADY 2100Z {DLF,HYF,IEF}

FS ADVANCE 1120Y {DLF,HYF,IEF}  
**W4 1120Y DOMET B607**  
 43727046 C LADY HARLAND 9123

BW	WW	YW	Milk	M&G	YSC	REA	MARB	CHB
4.3	61	94	25	56	1.0	0.31	0.06	94

Birth Weight: 68 Weaning Weight: 578 Yearling Weight: 1204

**61** **SHL900FREDBULL002BOFADVX0150**  
 DOB: 04/08/2018 Bull 44109776 Tattoo: 900F

CHURCHILL RED BULL 200Z {SOD,CHB,DLF,HYF,IEF,MSUDF}  
**W4 200Z RED DOMINO B002 {DLF,HYF,IEF,MSUDF}**  
 43520599 CHURCHILL LADY 2100Z {DLF,HYF,IEF}

HH ADVANCE 8203U ET {SOD,DLF,IEF}  
**FOUR L 8203U MISS ADVNC X0150 ET**  
 43206435 CL 1 DOMINETTE 825H {DOD,DLF,HYF,IEF}

BW	WW	YW	Milk	M&G	YSC	REA	MARB	CHB
5.0	54	78	23	50	0.9	0.29	0.10	98

Birth Weight: Weaning Weight: Yearling Weight:



**62** **SHL91FREDBULL002BOFADVCEY0009**  
 DOB: 03/20/2018 Bull 44109761 Tattoo: 91F

CHURCHILL RED BULL 200Z {SOD,CHB,DLF,HYF,IEF,MSUDF}  
**W4 200Z RED DOMINO B002 {DLF,HYF,IEF,MSUDF}**  
 43520599 CHURCHILL LADY 2100Z {DLF,HYF,IEF}

HH ADVANCE 8203U ET {SOD,DLF,IEF}  
**FOUR L 8203U MISS ADV Y0009 ET**  
 43206440 HH MISS ADVANCE 793G {DOD,DLF,HYF,IEF}

BW	WW	YW	Milk	M&G	YSC	REA	MARB	CHB
4.8	55	85	24	52	1.4	0.27	0.15	104

Birth Weight: Weaning Weight: Yearling Weight:



## 63

### W4 0387 DOM F501

DOB: 09/02/2018 Bull 44114356 Tattoo: F501

UPS DOMINO 5216 {SOD}{DLF,IEF}  
**DB 5216 DOM 0387 {DLF,HYF,IEF,MSUDF}**  
 43146486 DB MISS DOM 6005

C PURE GOLD 6224 ET  
**W4 6224 DOMET X080**  
 43165778 W4 LADY LERCH B228

BW	WW	YW	Milk	M&G	YSC	REA	MARB	CHB
3.3	48	82	24	48	1.3	0.38	0.013	94

Birth Weight: 73    Weaning Weight: 520    Yearling Weight: 1145



Lot 64

## 64

### W4 4312 B MILES F519

DOB: 09/11/2018 Bull 44114358 Tattoo: F519

C MILES MCKEE 2103 ET {CHB}{DLF,HYF,IEF,MSUDF}  
**C BAILEES MILES 4312 ET {DLF,HYF,IEF,MSUDF}**  
 43487323 BR BAILEE 1066 ET {DLF,HYF,IEF}

B EXCEL 20 ET {DLF,HYF,IEF}  
**B LADY EXCELL 436B**  
 43620869 B ROCKETTE 721

BW	WW	YW	Milk	M&G	YSC	REA	MARB	CHB
4.9	58	95	27	56	0.9	0.4	-0.032	105

Birth Weight: 77    Weaning Weight: 580    Yearling Weight: 1180



Lot 65

## 65

### W4 0387 DOM F532

DOB: 09/14/2018 Bull 44114360 Tattoo: F532

UPS DOMINO 5216 {SOD}{DLF,IEF}  
**DB 5216 DOM 0387 {DLF,HYF,IEF,MSUDF}**  
 43146486 DB MISS DOM 6005

HH ADVANCE 8203U ET {SOD}{DLF,IEF}  
**W4 8203 MS ADVANCE A044**  
 43429927 W4 1037 DOMET S655

BW	WW	YW	Milk	M&G	YSC	REA	MARB	CHB
4.8	55	85	22	49	1.2	0.32	0.013	94

Birth Weight: 70    Weaning Weight: 520    Yearling Weight: 1145



Lot 66

## 66

### W4 6011 BELLE AIR F538

DOB: 09/25/2018 Bull 44114361 Tattoo: F538

BAR S LHF 028 240 {DLF,HYF,IEF}  
**BR BELLE AIR 6011 {DLF,HYF,IEF,MSUDF}**  
 43724674 BR BELLE 4082 ET {DLF,HYF,IEF,MSUDF}

HH ADVANCE 396N {SOD}{CHB}{DLF,IEF}  
**IMR 396N MISS ADVANCE 838U {DLF,HYF,IEF}**  
 42900990 IMR 2040 MISS ADVANCE 405P {DOD}

BW	WW	YW	Milk	M&G	YSC	REA	MARB	CHB
3	57	90	31	59	1.7	0.49	0.043	112

Birth Weight: 74    Weaning Weight: 600    Yearling Weight: 1204



Lot 67

## 67

### W4 310 RIBEYE F548

DOB: 09/24/2018 Bull P44114362 Tattoo: F548

NJW 98S R117 RIBEYE 88X ET {SOD}{DLF,HYF,IEF,MSUDF}  
**BAR-S-SOF MR 88X 310 {DLF,HYF,IEF}**  
 43396221 BHF MISS KOOTER 602 {DLF,HYF,IEF}

HH ADVANCE 0102X ET {DLF,HYF,IEF}  
**CHURCHILL ILR LADY 2115Z**  
 43282091 CHURCHILL LADY 0123X ET {DLF,HYF,IEF}

BW	WW	YW	Milk	M&G	YSC	REA	MARB	CHB
3.6	57	88	34	63	1	0.59	0.008	111

Birth Weight: 66    Weaning Weight: 675    Yearling Weight: 1310

## 68

### W4 310 RIBEYE F557

DOB: 09/10/2018 Bull 44114363 Tattoo: F557

NJW 98S R117 RIBEYE 88X ET {SOD}{DLF,HYF,IEF,MSUDF}  
**BAR-S-SOF MR 88X 310 {DLF,HYF,IEF}**  
 43396221 BHF MISS KOOTER 602 {DLF,HYF,IEF}

RCR L1 AURUM DOMINO 08120 {DLF,HYF,IEF}  
**B MISS AURUM 396A**  
 43514789 B 461 DOMINETTE 837

BW	WW	YW	Milk	M&G	YSC	REA	MARB	CHB
3.1	50	78	27	52	0.8	0.44	-0.037	107

Birth Weight: 68    Weaning Weight: 540    Yearling Weight: 1145





**73 W4 392A MR BEEF F625**  
 DOB: 10/10/2018 Bull 44114368 Tattoo: F625

CL 1 DOMINO 0141 1ET {SOD}{CHB}{DLF,HYF,IEF}  
**DH DOMINO 392A {DLF,HYF,IEF,MSUDF}**  
 43459361 DH MISS ADVANCE 9156 {DLF,HYF,IEF,MSUDF}

L STAR DOMINO 212M S105  
**W4 S105 DOMINO Y540**  
 43314059 W4 4011 DOMET U267

BW	WW	YW	Milk	M&G	YSC	REA	MARB	CHB
4.2	57	96	30	59	1	0.47	-0.002	103

Birth Weight: 68 Weaning Weight: 560 Yearling Weight: 1156

**74 W4 0387 DOM F628**  
 DOB: 10/24/2018 Bull 44114369 Tattoo: F628

UPS DOMINO 5216 {SOD}{DLF,IEF}  
**DB 5216 DOM 0387 {DLF,HYF,IEF,MSUDF}**  
 43146486 DB MISS DOM 6005

H BANKER 613 ET {DLF,HYF,IEF}  
**W4 613 DOMET Y502**  
 43314027 W4 4011 DOMET T219

BW	WW	YW	Milk	M&G	YSC	REA	MARB	CHB
3.1	51	92	24	49	1.2	0.45	0.013	105

Birth Weight: 66 Weaning Weight: 548 Yearling Weight: 1174

**75 W4 B080 DOMINO F635**  
 DOB: 10/21/2018 Bull 44114370 Tattoo: F635

W4 -S ADVANCE DOM W168 ET  
**W4 W168 DOMINO B080 {DLF,HYF,IEF,MSUDF}**  
 43520661 W4 4011 DOMET T127

CL 1 DOMINO 697S {DLF,HYF,IEF}  
**MISS DOMINO M320**  
 43417356 MISS DOMINO M104

BW	WW	YW	Milk	M&G	YSC	REA	MARB	CHB
3.5	48	82	25	49	0.9	0.38	0.028	96

Birth Weight: 69 Weaning Weight: 523 Yearling Weight: 1152

**76 W4 310 RIBEYE F670**  
 DOB: 11/14/2018 Bull 44114371 Tattoo: F670

NJW 98S R117 RIBEYE 88X ET {SOD}{DLF,HYF,IEF,MSUDF}  
**BAR-S-SOF MR 88X 310 {DLF,HYF,IEF}**  
 43396221 BHF MISS KOOTER 602 {DLF,HYF,IEF}

CL 1 DOMINO 697S {DLF,HYF,IEF}  
**MISS DOMINO M410**  
 43514137 MISS DOMINO M617

BW	WW	YW	Milk	M&G	YSC	REA	MARB	CHB
4.5	56	86	27	55	0.8	0.5	-0.012	106

Birth Weight: 68 Weaning Weight: 525 Yearling Weight: 1136



**69 W4 310 RIBEYE F564**  
 DOB: 09/28/2018 Bull 44114364 Tattoo: F564

NJW 98S R117 RIBEYE 88X ET {SOD}{DLF,HYF,IEF,MSUDF}  
**BAR-S-SOF MR 88X 310 {DLF,HYF,IEF}**  
 43396221 BHF MISS KOOTER 602 {DLF,HYF,IEF}

W4 4011 DOMINO T229  
**W4 T229 DOMET Z045**  
 43414019 W4 MS ADVANCE DOMET N408

BW	WW	YW	Milk	M&G	YSC	REA	MARB	CHB
3.3	51	78	27	53	0.7	0.41	-0.032	102

Birth Weight: 74 Weaning Weight: 578 Yearling Weight: 1175

**70 W4 548C TOP SPEED F577**  
 DOB: 10/01/2018 Bull 44114365 Tattoo: F577

H/TSR/CHEZ/FULL THROTTLE ET {DLF,HYF,IEF}  
**CHURCHILL TOP SPEED 548C ET {DLF,HYF,IEF,MSUDF}**  
 43586918 CHURCHILL LADY 002X ET {DLF,HYF,IEF,MSUDF}

C MOLER 6213 ET {DLF,HYF,IEF}  
**W4 6213 DOMET Y041**  
 43211723 B CHURCHLADY 766

BW	WW	YW	Milk	M&G	YSC	REA	MARB	CHB
3.6	51	83	20	46	0.7	0.41	-0.017	108

Birth Weight: 61 Weaning Weight: 512 Yearling Weight: 1120

**71 W4 310 RIBEYE F582**  
 DOB: 10/04/2018 Bull 44114366 Tattoo: F582

NJW 98S R117 RIBEYE 88X ET {SOD}{DLF,HYF,IEF,MSUDF}  
**BAR-S-SOF MR 88X 310 {DLF,HYF,IEF}**  
 43396221 BHF MISS KOOTER 602 {DLF,HYF,IEF}

CL 1 DOMINO 465P {DLF,HYF,IEF}  
**MISS L1 DOMINO M419**  
 43514145 MISS DOMINO M208Z

BW	WW	YW	Milk	M&G	YSC	REA	MARB	CHB
4.1	54	83	29	56	0.8	0.45	-0.017	105

Birth Weight: 66 Weaning Weight: 523 Yearling Weight: 1145

**72 W4 102Y RANCHER F610**  
 DOB: 10/15/2018 Bull 44114367 Tattoo: F610

CHURCHILL RANCHER 592R {SOD}{DLF,IEF}  
**W4 592 DOMINO 102Y ET {DLF,HYF,IEF,MSUDF}**  
 43212083 BR 74 ALAINNA 3113

CL 1 DOMINO 955W {SOD}{CHB}{DLF,HYF,IEF}  
**W4 955 DOMET Z007**  
 43414051 W4 S025 DOMET W577

BW	WW	YW	Milk	M&G	YSC	REA	MARB	CHB
4.1	55	87	25	53	0.8	0.39	0.028	99

Birth Weight: 75 Weaning Weight: 562 Yearling Weight: 1178



**77****W4 392A MR BEEF F683**

DOB: 11/12/2018 Bull 44114372 Tattoo: F683

CL 1 DOMINO 0141 1ET {SOD}CHB{DLF,HYF,IEF}  
 DH DOMINO 392A {DLF,HYF,IEF,MSUDF}  
 43459361 DH MISS ADVANCE 9156 {DLF,HYF,IEF,MSUDF}

DVOR 665 9175 DOMINO 150  
 B LADY PATRICIA 425B  
 43620855 B 860 DOMINETTE 273Z

BW	WW	YW	Milk	M&G	YSC	REA	MARB	CHB
2	54	91	32	59	1	0.43	0.018	102

Birth Weight: 63 Weaning Weight: 538 Yearling Weight: 1145

*Thank you for  
 your interest  
 in our program!*







**78 DHR 1449 MISS ADV R EASY 842**  
 DOB: 03/05/2018 Cow 43891688 Tattoo: D842

H5 9131 DOMINO 2185 {CHB}{DLF,HYF,IEF}  
**CX 2185 ADVANCE 1449 {DLF,HYF,IEF,MSUDF}**  
 43545283 CX MISS 7034 ADVANCE 1256

F REST EASY 847 {SOD}{DLF,HYF,IEF}  
**F MS REST EASY 432**  
 43468735 F MS 765 RIBSTONE 916

BW	WW	YW	Milk	M&G	YSC	REA	MARB	CHB
3.6	56	95	35	63	1.3	0.21	0.053	93

AI'd to CL 1 Domino 7177E on 12/21/19. Pasture exposed to CL 1 Domino 7177 1/12/20 to 3/20/20.

**80 W4 166Y DOMET E534**  
 DOB: 09/22/2017 Cow 44059745 Tattoo: E534

HH ADVANCE 8203U ET {SOD}{DLF,IEF}  
**CHURCHILL DOMINO 166Y {DLF,HYF,IEF,MSUDF}**  
 43187895 CHURCHILL LADY 943W {DLF,HYF,IEF}

CL 1 DOMINO 193Y 1ET {DLF,HYF,IEF}  
**MISS L1 DOMINO M436**  
 43514126 MISS DOMINO M901 {DOD}

BW	WW	YW	Milk	M&G	YSC	REA	MARB	CHB
3.7	38	59	29	48	0.8	0.13	0.003	94

AI'd to CL 1 Domino 7177E on 12/21/19. Pasture exposed to CL 1 Domino 7177 1/12/20 to 3/20/20.

**79 W4 136Y DOMET E532**  
 DOB: 11/23/2017 Cow 44059754 Tattoo: E532

CL 1 DOMINO 955W {SOD}{CHB}{DLF,HYF,IEF}  
**W4 955 DOMINO 136Y 2ET {DLF,HYF,IEF,MSUDF}**  
 43212032 C MS PURE GOLD 5007 ET {DLF,HYF,IEF}

HH ADVANCE 8203U ET {SOD}{DLF,IEF}  
**W4 8203 DOMET Y149**  
 43211789 GKB W4 212M MISS DOMINO B621

BW	WW	YW	Milk	M&G	YSC	REA	MARB	CHB
3.2	47	73	22	45	0.8	0.32	0.013	107

AI'd to C212 Domino 4011 ET on 12/21/19. Pasture exposed to CL 1 Domino 7177 1/12/20 to 3/20/20.

**81 W4 548C TOP LADY E536**  
 DOB: 09/21/2017 Cow 44059721 Tattoo: E536

H/TSR/CHEZ/FULL THROTTLE ET {DLF,HYF,IEF}  
**CHURCHILL TOP SPEED 548C ET {DLF,HYF,IEF,MSUDF}**  
 43586918 CHURCHILL LADY 002X ET {DLF,HYF,IEF,MSUDF}

RCR L1 AURUM DOMINO 08120 {DLF,HYF,IEF}  
**B LADY AURUM 491B**  
 43589959 B AMERICAN HONEY 12X

BW	WW	YW	Milk	M&G	YSC	REA	MARB	CHB
2.8	49	80	21	45	0.7	0.37	-0.027	104

AI'd to CL 1 Domino 7177E on 12/21/19. Pasture exposed to CL 1 Domino 7177 1/12/20 to 3/20/20.



**82****W4 502Y ADVANCETTE E594**

DOB: 10/06/2017 Cow 44059914 Tattoo: E594

GO 3196 ADVANCE S109 {SOD}{DLF,HYF,IEF}  
**W4 S109 ADVANCE 502Y ET {DLF,HYF,IEF}**  
 43412411 AMH MISS 2998 281 {DLF,IEF}

C 212 DOMINO 4011 ET {SOD}{CHB}{DLF,HYF,IEF}  
**W4 4011 DOMET T249**  
 42841370 W4 492 DOMET N410

BW	WW	YW	Milk	M&G	YSC	REA	MARB	CHB
4	50	86	20	45	0.5	0.38	-0.027	104

Pasture exposed to CL 1 Domino 7177 1/12/20 to 3/20/20.

**86****W4 0387 MS DOM E673**

DOB: 10/20/2017 Cow 44059226 Tattoo: E673

UPS DOMINO 5216 {SOD}{DLF,IEF}  
**DB 5216 DOM 0387 {DLF,HYF,IEF,MSUDF}**  
 43146486 DB MISS DOM 6005

C MOLER 6213 ET {DLF,HYF,IEF}  
**W4 6213 DOMET Y677**  
 43314192 W4 8055 DOMET N497

BW	WW	YW	Milk	M&G	YSC	REA	MARB	CHB
4.3	51	84	24	49	1.1	0.34	0.003	94

Pasture exposed to CL 1 Domino 7177 1/12/20 to 3/20/20.

**83****W4 166Y DOMET E607**

DOB: 10/13/2017 Cow 44059870 Tattoo: E607

HH ADVANCE 8203U ET {SOD}{DLF,IEF}  
**CHURCHILL DOMINO 166Y {DLF,HYF,IEF,MSUDF}**  
 43187895 CHURCHILL LADY 943W {DLF,HYF,IEF}

FS ADVANCE 1120Y {DLF,HYF,IEF}  
**W4 1120 ADVANCE DOM B029**  
 43605012 W4 S025 DOMET Y672

BW	WW	YW	Milk	M&G	YSC	REA	MARB	CHB
4.4	48	70	25	49	0.8	0.23	0.023	95

Al'd to CL 1 Domino 7177 on 12/21/19. Pasture exposed to CL 1 Domino 7177 1/12/20 to 3/20/20.

**87****W4 166Y DOMET E675**

DOB: 11/05/2017 Cow 44059871 Tattoo: E675

HH ADVANCE 8203U ET {SOD}{DLF,IEF}  
**CHURCHILL DOMINO 166Y {DLF,HYF,IEF,MSUDF}**  
 43187895 CHURCHILL LADY 943W {DLF,HYF,IEF}

C MOLER 6213 ET {DLF,HYF,IEF}  
**W4 6213 DOMET A622**  
 43517312 W4 408 DOMET W426

BW	WW	YW	Milk	M&G	YSC	REA	MARB	CHB
4.7	50	75	26	51	1	0.22	0.023	98

Pasture exposed to W4 4108 Hometown 106D on 12/21/19. Pasture exposed to CL 1 Domino 7177 1/12/20 to 3/20/20.

**84****W4 0387 DOMET E665**

DOB: 11/02/2017 Cow 43987818 Tattoo: E665

UPS DOMINO 5216 {SOD}{DLF,IEF}  
**DB 5216 DOM 0387 {DLF,HYF,IEF,MSUDF}**  
 43146486 DB MISS DOM 6005

HH ADVANCE 8203U ET {SOD}{DLF,IEF}  
**W4 8203 DOMET X750**  
 43211940 C COWGIRL 7176 ET

BW	WW	YW	Milk	M&G	YSC	REA	MARB	CHB
5.2	60	95	23	53	1.2	0.41	0.023	99

Pasture exposed to W4 4108 Hometown 106D on 12/21/19. Pasture exposed to CL 1 Domino 7177 1/12/20 to 3/20/20.

**88****W4 407 MS ADVANCE E702**

DOB: 12/07/2017 Cow 44059188 Tattoo: E702

HH ADVANCE 2125Z {DLF,HYF,IEF}  
**FS ADVANCE 407B {DLF,HYF,IEF}**  
 43466166 CL 1 DOMINETTE 057X {DLF,HYF,IEF}

C PURE GOLD 6224 ET  
**W4 6224 DOMET Y688**  
 43314202 W4 4011 DOMET S039

BW	WW	YW	Milk	M&G	YSC	REA	MARB	CHB
2.4	47	78	27	50	1	0.34	-0.017	99

Al'd to CL 1 Domino 7177 on 12/21/19. Pasture exposed to CL 1 Domino 7177 1/12/20 to 3/20/20.

**85****W4 102Y DOMET E671**

DOB: 11/03/2017 Cow 44059766 Tattoo: E671

CHURCHILL RANCHER 592R {SOD}{DLF,IEF}  
**W4 592 DOMINO 102Y ET {DLF,HYF,IEF,MSUDF}**  
 43212083 BR 74 ALAINNA 3113

GO THE NATURAL T15 {DLF,HYF,IEF}  
**W4 T15 DOMET W086**  
 43020525 H EVE 623 ET

BW	WW	YW	Milk	M&G	YSC	REA	MARB	CHB
4.3	54	84	24	50	0.7	0.21	0.023	95

Pasture exposed to CL 1 Domino 7177 1/12/20 to 3/20/20.

**89****W4 548 TOP DOMET E710**

DOB: 11/19/2017 Cow 44059908 Tattoo: E710

H/TSR/CHEZ/FULL THROTTLE ET {DLF,HYF,IEF}  
**CHURCHILL TOP SPEED 548C ET {DLF,HYF,IEF,MSUDF}**  
 43586918 CHURCHILL LADY 002X ET {DLF,HYF,IEF,MSUDF}

CL 1 DOMINO 955W {SOD}{CHB}{DLF,HYF,IEF}  
**W4 955 MAGGIE 134Y ET {DLF,HYF,IEF}**  
 43211698 RCR AURUM MARY 02086

BW	WW	YW	Milk	M&G	YSC	REA	MARB	CHB
3.1	52	86	26	52	0.8	0.55	-0.017	113

Pasture exposed to W4 4108 Hometown 106D on 12/21/19. Pasture exposed to CL 1 Domino 7177 1/12/20 to 3/20/20.





RANCH

EST. 1961

*Thank you for your continued support of W4 Ranch!*



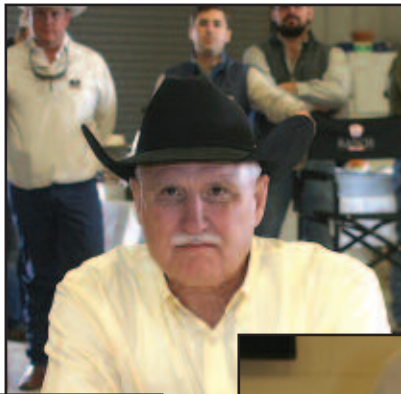




RANCH

EST. 1961

*Scenes from our fall sale.*





**90****W4 166Y DOMET E712**

DOB: 11/23/2017 Cow 44059743 Tattoo: E712

HH ADVANCE 8203U ET {SOD}{DLF,IEF}  
**CHURCHILL DOMINO 166Y {DLF,HYF,IEF,MSUDF}**  
 43187895 CHURCHILL LADY 943W {DLF,HYF,IEF}

C PURE GOLD 6224 ET  
**W4 6224 DOMET A640**  
 43517184 W4 058 DOMET N518

BW	WW	YW	Milk	M&G	YSC	REA	MARB	CHB
4.5	47	74	27	50	1.1	0.22	0.023	98

Pasture exposed to CL 1 Domino 7177 1/12/20 to 3/20/20.

**94****W4 392A DOMINETTE E744**

DOB: 12/04/2017 Cow 44059765 Tattoo: E744

CL 1 DOMINO 0141 1ET {SOD}{CHB}{DLF,HYF,IEF}  
**DH DOMINO 392A {DLF,HYF,IEF,MSUDF}**  
 43459361 DH MISS ADVANCE 9156 {DLF,HYF,IEF,MSUDF}

RCR L1 AURUM DOMINO 08120 {DLF,HYF,IEF}  
**B 8120 DOMINETTE 328A**  
 43472277 B AMERICAN HONEY 12X

BW	WW	YW	Milk	M&G	YSC	REA	MARB	CHB
3.7	57	94	29	58	0.9	0.41	-0.007	101

AI'd to CL 1 Domino 7177 on 12/21/19. Pasture exposed to CL 1 Domino 7177 1/12/20 to 3/20/20.

**91****W4 392A DOMET E723**

DOB: 11/27/2017 Cow 44059718 Tattoo: E723

CL 1 DOMINO 0141 1ET {SOD}{CHB}{DLF,HYF,IEF}  
**DH DOMINO 392A {DLF,HYF,IEF,MSUDF}**  
 43459361 DH MISS ADVANCE 9156 {DLF,HYF,IEF,MSUDF}

BPX ADVANCE 1033 {DLF,HYF,IEF}  
**DH MS ADVANCE 3192**  
 43460904 DH DOMINETTE 0117

BW	WW	YW	Milk	M&G	YSC	REA	MARB	CHB
3.5	56	95	33	61	0.9	0.42	0.013	103

Pasture exposed to CL 1 Domino 7177 1/12/20 to 3/20/20.

**95****W4 392A DOMET E747**

DOB: 12/02/2017 Cow 44059880 Tattoo: E747

CL 1 DOMINO 0141 1ET {SOD}{CHB}{DLF,HYF,IEF}  
**DH DOMINO 392A {DLF,HYF,IEF,MSUDF}**  
 43459361 DH MISS ADVANCE 9156 {DLF,HYF,IEF,MSUDF}

DH DOMINO 915  
**DH DOMINETTE 3168A**  
 43459296 DH DOMINETTE 1165Y {DLF,HYF,IEF}

BW	WW	YW	Milk	M&G	YSC	REA	MARB	CHB
3.8	58	95	29	58	1	0.42	0.003	103

AI'd to CL 1 Domino 7177 on 12/21/19. Pasture exposed to CL 1 Domino 7177 1/12/20 to 3/20/20.

**92****W4 4312 BAILEE E738**

DOB: 12/01/2017 Cow 44059888 Tattoo: E738

C MILES MCKEE 2103 ET {CHB}{DLF,HYF,IEF,MSUDF}  
**C BAILEES MILES 4312 ET {DLF,HYF,IEF,MSUDF}**  
 43487323 BR BAILEE 1066 ET {DLF,HYF,IEF}

CHURCHILL SENSATION 028X {SOD}{DLF,HYF,IEF}  
**B MISS SENSATIONAL 426B**  
 43620850 B LADY RIBSTONE 141Y

BW	WW	YW	Milk	M&G	YSC	REA	MARB	CHB
3	59	91	35	64	1.2	0.54	-0.007	111

AI'd to C212 Domino 4011 ET on 12/21/19. Pasture exposed to CL 1 Domino 7177 1/12/20 to 3/20/20.

**96****W4 B080 DOMET E760**

DOB: 12/05/2017 Cow 44059896 Tattoo: E760

W4 -S ADVANCE DOM W168 ET  
**W4 W168 DOMINO B080 {DLF,HYF,IEF,MSUDF}**  
 43520661 W4 4011 DOMET T127

W4 -S ADVANCE DOM W168 ET  
**W4 W168 DOMET Z675**  
 43491689 H LADY DOMINO 676

BW	WW	YW	Milk	M&G	YSC	REA	MARB	CHB
2.9	47	79	26	50	1	0.36	0.043	95

Pasture exposed to CL 1 Domino 7177 1/12/20 to 3/20/20.

**93****W4 0387 DOMET E740**

DOB: 12/01/2017 Cow 44059915 Tattoo: E740

UPS DOMINO 5216 {SOD}{DLF,IEF}  
**DB 5216 DOM 0387 {DLF,HYF,IEF,MSUDF}**  
 43146486 DB MISS DOM 6005

CHURCHILL DOMINO 4137 ET  
**B CHURCH LADY 759**  
 42810719 B LADY BULLSEYE 529

BW	WW	YW	Milk	M&G	YSC	REA	MARB	CHB
4.5	52	89	24	50	1.3	0.39	0.003	98

AI'd to C212 Domino 4011 ET on 12/21/19. Pasture exposed to CL 1 Domino 7177 1/12/20 to 3/20/20.

**97****W4 407 ADVANCETTE E764**

DOB: 12/07/2017 Cow 44059911 Tattoo: E764

HH ADVANCE 2125Z {DLF,HYF,IEF}  
**FS ADVANCE 407B {DLF,HYF,IEF}**  
 43466166 CL 1 DOMINETTE 057X {DLF,HYF,IEF}

OXH ADVANCE 3265  
**B LADY OXLEY 769**  
 42810692 B LADY ICON 3002N

BW	WW	YW	Milk	M&G	YSC	REA	MARB	CHB
3.7	51	82	23	49	1	0.23	-0.027	94

Pasture exposed to CL 1 Domino 7177 1/12/20 to 3/20/20.



**98****W4 392A DOMINETTE E767**

DOB: 12/07/2017 Cow 44059738 Tattoo: E767

CL 1 DOMINO 0141 1ET {SOD}{CHB}{DLF,HYF,IEF}  
**DH DOMINO 392A {DLF,HYF,IEF,MSUDF}**  
 43459361 DH MISS ADVANCE 9156 {DLF,HYF,IEF,MSUDF}

CL 1 DOMINO 863U 1ET {DLF,IEF}  
**DH DOMINETTE 1210Y**  
 43308253 DH DOMINETTE 1158

BW	WW	YW	Milk	M&G	YSC	REA	MARB	CHB
3.2	52	85	30	56	0.9	0.37	0.023	98

AI'd to CL 1 Domino 7177 on 12/21/19. Pasture exposed to CL 1 Domino 7177 1/12/20 to 3/20/20.

**99****W4 B080 DOMET E770**

DOB: 12/02/2017 Cow 44059767 Tattoo: E770

W4 -S ADVANCE DOM W168 ET  
**W4 W168 DOMINO B080 {DLF,HYF,IEF,MSUDF}**  
 43520661 W4 4011 DOMET T127

C 212 DOMINO 4011 ET {SOD}{CHB}{DLF,HYF,IEF}  
**W4 4011 DOMET Y500**  
 43314025 W4 6025 DOMET U652

BW	WW	YW	Milk	M&G	YSC	REA	MARB	CHB
2.2	46	81	26	49	0.9	0.4	0.013	102

AI'd to CL 1 Domino 7177 on 12/21/19. Pasture exposed to CL 1 Domino 7177 1/12/20 to 3/20/20.

**100****W4 136Y DOMET E814**

DOB: 12/23/2017 Cow 44059894 Tattoo: E814

CL 1 DOMINO 955W {SOD}{CHB}{DLF,HYF,IEF}  
**W4 955 DOMINO 136Y 2ET {DLF,HYF,IEF,MSUDF}**  
 43212032 C MS PURE GOLD 5007 ET {DLF,HYF,IEF}

CHURCHILL DOMINO 166Y {DLF,HYF,IEF,MSUDF}  
**W4 166 DOMET B507**  
 43651279 W4 1037 DOMET S043

BW	WW	YW	Milk	M&G	YSC	REA	MARB	CHB
3.9	49	76	25	50	0.7	0.33	0.013	106

AI'd to C212 Domino 4011 ET on 12/21/19. Pasture exposed to CL 1 Domino 7177 1/12/20 to 3/20/20.

**101****W4 310 LADY RIBEYE F001**

DOB: 03/09/2018 Cow 44115465 Tattoo: F001

NJW 98S R117 RIBEYE 88X ET {SOD}{DLF,HYF,IEF,MSUDF}  
**BAR-S-SOF MR 88X 310 {DLF,HYF,IEF}**  
 43396221 BHF MISS KOOTER 602 {DLF,HYF,IEF}

FS ADVANCE 1123Y {DLF,HYF,IEF}  
**W4 1123 DOMET B516**  
 43605057 W4 1037 DOMET S055

BW	WW	YW	Milk	M&G	YSC	REA	MARB	CHB
3.6	51	77	27	52	0.6	0.4	-0.012	105

AI'd to CL 1 Domino 7177 on 12/21/19. Pasture exposed to CL 1 Domino 7177 1/12/20 to 3/20/20.

**102****W4 4011 DOMET F008**

DOB: 03/15/2018 Cow 44115467 Tattoo: F008

CL 1 DOMINO 212M {SOD}{DLF,IEF}  
**C 212 DOMINO 4011 ET {SOD}{CHB}{DLF,HYF,IEF}**  
 42473400 C MS PURE GOLD 2003 {DLF,HYF,IEF}

CL 1 DOMINO 338A {DLF,HYF,IEF}  
**MISS DOMINO M529**  
 43597523 MISS DOMINO M432

BW	WW	YW	Milk	M&G	YSC	REA	MARB	CHB
2.2	43	72	29	50	1	0.42	-0.027	106

AI'd to CL 1 Domino 7177 on 12/21/19. Pasture exposed to CL 1 Domino 7177 1/12/20 to 3/20/20.

**103****W4 3001 MISS ADVANCE F012**

DOB: 03/17/2018 Cow 44115469 Tattoo: F012

HH ADVANCE 0002X {SOD}{DLF,HYF,IEF,MSUDF}  
**FS ADVANCE 3001A ET {DLF,HYF,IEF}**  
 43418093 EL MISS ADVANCE 710T {DLF,HYF,IEF}

DOMINO M021  
**MISSXDOMINO M517**  
 43597525 MISS DOMINO M311

BW	WW	YW	Milk	M&G	YSC	REA	MARB	CHB
3.4	54	87	28	55	1.1	0.36	-0.007	104

AI'd to CL 1 Domino 7177 on 12/21/19. Pasture exposed to CL 1 Domino 7177 1/12/20 to 3/20/20.

**104****W4 3001 MISS ADVANCE F014**

DOB: 03/18/2018 Cow 44115470 Tattoo: F014

HH ADVANCE 0002X {SOD}{DLF,HYF,IEF,MSUDF}  
**FS ADVANCE 3001A ET {DLF,HYF,IEF}**  
 43418093 EL MISS ADVANCE 710T {DLF,HYF,IEF}

W4 592 DOMINO 102Y ET {DLF,HYF,IEF,MSUDF}  
**W4 102Y MS ADVANCE C079**  
 43765297 W4 8203 ADVANCE 501Y ET

BW	WW	YW	Milk	M&G	YSC	REA	MARB	CHB
4.2	58	91	25	54	1	0.33	0.008	102

Pasture exposed to W4 4108 Hometown 106D on 12/21/19. Pasture exposed to CL 1 Domino 7177 1/12/20 to 3/20/20.

**105****W4 W219 BANK LADY F022**

DOB: 03/23/2018 Cow 44115471 Tattoo: F022

H BANKER 613 ET {DLF,HYF,IEF}  
**W4 613 DOMINO W219**  
 43202572 W4 LADY N074

CHURCHILL RANCHER 592R {SOD}{DLF,IEF}  
**W4 592 DOMET Y576**  
 43314094 F&F MISS HARLEY 605

BW	WW	YW	Milk	M&G	YSC	REA	MARB	CHB
4.4	48	89	20	44	0.9	0.4	0.018	110

Pasture exposed to W4 4108 Hometown 106D on 12/21/19. Pasture exposed to CL 1 Domino 7177 1/12/20 to 3/20/20.



## 106 W4 548C TOP DOMET F025

DOB: 02/23/2018 Cow 44059861 Tattoo: F025

H/TSR/CHEZ/FULL THROTTLE ET {DLF,HYF,IEF}  
**CHURCHILL TOP SPEED 548C ET {DLF,HYF,IEF,MSUDF}**  
 43586918 CHURCHILL LADY 002X ET {DLF,HYF,IEF,MSUDF}

L1 DOMINO 99496 {SOD}  
**DH DOMINETTE 4151**  
 42563022 DH MISS ADVANCE 762

BW	WW	YW	Milk	M&G	YSC	REA	MARB	CHB
2.7	47	77	25	49	0.6	0.41	-0.007	106

AI'd to CL 1 Domino 7177 on 12/21/19. Pasture exposed to CL 1 Domino 7177 1/12/20 to 3/20/20.

## 107 W4 3001 ADVANCE DOMET F027

DOB: 03/20/2018 Cow 44115472 Tattoo: F027

HH ADVANCE 0002X {SOD}{DLF,HYF,IEF,MSUDF}  
**FS ADVANCE 3001A ET {DLF,HYF,IEF}**  
 43418093 EL MISS ADVANCE 710T {DLF,HYF,IEF}

W4 613 DOMINO W219  
**W4 W219 DOMET B599**  
 43727024 W4 041 DOMET T514

BW	WW	YW	Milk	M&G	YSC	REA	MARB	CHB
2.7	49	83	24	49	1	0.35	-0.002	108

AI'd to CL 1 Domino 7177 on 12/21/19. Pasture exposed to CL 1 Domino 7177 1/12/20 to 3/20/20.

## 108 W4 3001 ADVANCE DOMET F028

DOB: 02/26/2018 Cow 44059855 Tattoo: F028

HH ADVANCE 0002X {SOD}{DLF,HYF,IEF,MSUDF}  
**FS ADVANCE 3001A ET {DLF,HYF,IEF}**  
 43418093 EL MISS ADVANCE 710T {DLF,HYF,IEF}

W4 S109 ADVANCE 502Y ET {DLF,HYF,IEF}  
**W4 502 DOMET B556**  
 43597491 W4 613 DOMET X552

BW	WW	YW	Milk	M&G	YSC	REA	MARB	CHB
3.9	56	92	26	54	0.9	0.4	-0.012	109

AI'd to C212 Domino 4011 ET on 12/21/19. Pasture exposed to CL 1 Domino 7177 1/12/20 to 3/20/20.

## 109 W4 392A DOMET F029

DOB: 03/22/2018 Cow 44115473 Tattoo: F029

CL 1 DOMINO 0141 1ET {SOD}{CHB}{DLF,HYF,IEF}  
**DH DOMINO 392A {DLF,HYF,IEF,MSUDF}**  
 43459361 DH MISS ADVANCE 9156 {DLF,HYF,IEF,MSUDF}

CL 1 DOMINO 314A {DLF,HYF,IEF}  
**B PI LADY 506C**  
 43634552 B MISS PROFICIENT 311A

BW	WW	YW	Milk	M&G	YSC	REA	MARB	CHB
2.6	56	94	35	63	1.1	0.38	0.028	98

AI'd to C212 Domino 4011 ET on 12/21/19. Pasture exposed to CL 1 Domino 7177 1/12/20 to 3/20/20.

## 110 W4 548C TOP LADY F042

DOB: 04/10/2018 Cow 44115474 Tattoo: F042

H/TSR/CHEZ/FULL THROTTLE ET {DLF,HYF,IEF}  
**CHURCHILL TOP SPEED 548C ET {DLF,HYF,IEF,MSUDF}**  
 43586918 CHURCHILL LADY 002X ET {DLF,HYF,IEF,MSUDF}

CHURCHILL RANCHER 592R {SOD}{DLF,IEF}  
**W4 592 DOMET X634**  
 43211824 W4 4011 DOMET S039

BW	WW	YW	Milk	M&G	YSC	REA	MARB	CHB
3.3	55	91	23	51	0.8	0.49	0.008	114

AI'd to CL 1 Domino 7177 on 12/21/19. Pasture exposed to CL 1 Domino 7177 1/12/20 to 3/20/20.

## 111 W4 548C TOP LADY F047

DOB: 04/02/2018 Cow 44115475 Tattoo: F047

H/TSR/CHEZ/FULL THROTTLE ET {DLF,HYF,IEF}  
**CHURCHILL TOP SPEED 548C ET {DLF,HYF,IEF,MSUDF}**  
 43586918 CHURCHILL LADY 002X ET {DLF,HYF,IEF,MSUDF}

BPX ADVANCE 1033 {DLF,HYF,IEF}  
**DH MS ADVANCE 3190**  
 43460896 DH DOMINETTE 4151

BW	WW	YW	Milk	M&G	YSC	REA	MARB	CHB
1.8	47	77	26	50	0.7	0.43	-0.007	110

AI'd to C212 Domino 4011 ET on 12/21/19. Pasture exposed to CL 1 Domino 7177 1/12/20 to 3/20/20.

## 112 W4 392A DOMET F054

DOB: 04/05/2018 Cow 44115477 Tattoo: F054

CL 1 DOMINO 0141 1ET {SOD}{CHB}{DLF,HYF,IEF}  
**DH DOMINO 392A {DLF,HYF,IEF,MSUDF}**  
 43459361 DH MISS ADVANCE 9156 {DLF,HYF,IEF,MSUDF}

CL 1 DOMINO 052X 1ET {DLF,HYF,IEF}  
**B 52X DOMINETTE 5003C**  
 43724446 B ROXANNE 931

BW	WW	YW	Milk	M&G	YSC	REA	MARB	CHB
3.9	57	94	33	62	0.9	0.45	0.003	103

AI'd to C212 Domino 4011 ET on 12/21/19. Pasture exposed to CL 1 Domino 7177 1/12/20 to 3/20/20.

## 113 W4 392A DOMET F055

DOB: 04/05/2018 Cow 44115478 Tattoo: F055

CL 1 DOMINO 0141 1ET {SOD}{CHB}{DLF,HYF,IEF}  
**DH DOMINO 392A {DLF,HYF,IEF,MSUDF}**  
 43459361 DH MISS ADVANCE 9156 {DLF,HYF,IEF,MSUDF}

RCR L1 AURUM DOMINO 08120 {DLF,HYF,IEF}  
**B GOLDEN MISS 556C**  
 43724329 B LILLY 45X

BW	WW	YW	Milk	M&G	YSC	REA	MARB	CHB
3.5	57	93	32	60	0.9	0.48	0.008	104

AI'd to CL 1 Domino 7177 on 12/21/19. Pasture exposed to CL 1 Domino 7177 1/12/20 to 3/20/20.

# 114 W4 166Y AURUM LADY F061

DOB: 03/07/2018 Cow 44059837 Tattoo: F061

HH ADVANCE 8203U ET {SOD}{DLF,IEF}  
CHURCHILL DOMINO 166Y {DLF,HYF,IEF,MSUDF}  
43187895 CHURCHILL LADY 943W {DLF,HYF,IEF}

RCR L1 AURUM DOMINO 08120 {DLF,HYF,IEF}  
B AURUM LADY 481B  
43620923 B MISTY ROBIN 108Y

BW	WW	YW	Milk	M&G	YSC	REA	MARB	CHB
4.4	51	74	27	53	0.9	0.27	0.003	96

AI'd to C212 Domino 4011 ET on 12/21/19. Pasture exposed to CL 1 Domino 7177 1/12/20 to 3/20/20.

# 118 W4 B080 DOMET F081

DOB: 03/08/2018 Cow 44059852 Tattoo: F081

W4 -S ADVANCE DOM W168 ET  
W4 W168 DOMINO B080 {DLF,HYF,IEF,MSUDF}  
43520661 W4 4011 DOMET T127

W4 613 DOMINO W219  
W4 W219 DOMET B134  
43520650 W4 522 DOMET U586

BW	WW	YW	Milk	M&G	YSC	REA	MARB	CHB
3	43	82	27	48	0.9	0.38	0.023	102

AI'd to CL 1 Domino 7177 on 12/21/19. Pasture exposed to CL 1 Domino 7177 1/12/20 to 3/20/20.

# 115 W4 3001 MISS ADVANCE F070

DOB: 03/11/2018 Cow 44115479 Tattoo: F070

HH ADVANCE 0002X {SOD}{DLF,HYF,IEF,MSUDF}  
FS ADVANCE 3001A ET {DLF,HYF,IEF}  
43418093 EL MISS ADVANCE 710T {DLF,HYF,IEF}

B EXCEL 20 ET {DLF,HYF,IEF}  
B LADY EXCEL 581C  
43724420 B LADY RIBSTONE 023X

BW	WW	YW	Milk	M&G	YSC	REA	MARB	CHB
3.6	57	90	27	56	1.1	0.36	-0.012	106

Pasture exposed to CL 1 Domino 7177 1/12/20 to 3/20/20.

# 119 W4 0387 DOMINETTE F087

DOB: 03/14/2018 Cow 44059845 Tattoo: F087

UPS DOMINO 5216 {SOD}{DLF,IEF}  
DB 5216 DOM 0387 {DLF,HYF,IEF,MSUDF}  
43146486 DB MISS DOM 6005

HH ADVANCE 6001S  
KB L1 DOMINETTE 253Z  
43274374 MONTANA MISS 698 ET

BW	WW	YW	Milk	M&G	YSC	REA	MARB	CHB
3.5	50	83	25	50	1.4	0.28	0.013	94

AI'd to W4 4108 Hometown 106D on 12/21/19. Pasture exposed to CL 1 Domino 7177 1/12/20 to 3/20/20.

# 116 W4 548C TOP DOMET F073

DOB: 03/12/2018 Cow 44059846 Tattoo: F073

H/TSR/CHEZ/FULL THROTTLE ET {DLF,HYF,IEF}  
CHURCHILL TOP SPEED 548C ET {DLF,HYF,IEF,MSUDF}  
43586918 CHURCHILL LADY 002X ET {DLF,HYF,IEF,MSUDF}

L STAR DOMINO 212M S105  
W4 S105 DOMET Y538  
43314057 W4 4011 DOMET U086

BW	WW	YW	Milk	M&G	YSC	REA	MARB	CHB
3.1	48	80	21	45	0.7	0.41	-0.022	108

Pasture exposed to CL 1 Domino 7177 1/12/20 to 3/20/20.

# 120 W4 4312 BAILEE F100

DOB: 03/18/2018 Cow 44059862 Tattoo: F100

C MILES MCKEE 2103 ET {CHB}{DLF,HYF,IEF,MSUDF}  
C BAILEES MILES 4312 ET {DLF,HYF,IEF,MSUDF}  
43487323 BR BAILEE 1066 ET {DLF,HYF,IEF}

W4 -S ADVANCE DOM W168 ET  
W4 W168 DOMET Z530  
43491697 B 4140 DOMINETTE 622

BW	WW	YW	Milk	M&G	YSC	REA	MARB	CHB
5	59	96	29	59	1.1	0.53	-0.012	112

AI'd to CL 1 Domino 7177 on 12/21/19. Pasture exposed to CL 1 Domino 7177 1/12/20 to 3/20/20.

# 117 W4 0387 DOMET F077

DOB: 03/12/2018 Cow 44059860 Tattoo: F077

UPS DOMINO 5216 {SOD}{DLF,IEF}  
DB 5216 DOM 0387 {DLF,HYF,IEF,MSUDF}  
43146486 DB MISS DOM 6005

WR GAME DAY R019  
W4 R019 DOMET U120  
42927471 W4 041 DOMET P242

BW	WW	YW	Milk	M&G	YSC	REA	MARB	CHB
4.1	50	83	22	47	1.2	0.35	0.008	93

AI'd to W4 4108 Hometown 106D on 12/21/19. Pasture exposed to CL 1 Domino 7177 1/12/20 to 3/20/20.

# 121 W4 W219 BANK LADY F102

DOB: 03/21/2018 Cow 44059853 Tattoo: F102

H BANKER 613 ET {DLF,HYF,IEF}  
W4 613 DOMINO W219  
4320572 W4 LADY N074

C MOLER 6213 ET {DLF,HYF,IEF}  
W4 6213 DOMET Y676  
43314191 B CHURCHLADY 770

BW	WW	YW	Milk	M&G	YSC	REA	MARB	CHB
4.5	45	84	22	45	0.8	0.37	-0.012	111

Pasture exposed to CL 1 Domino 7177 1/12/20 to 3/20/20.



## 122 W4 3001 ADVANCETTE F103

DOB: 03/21/2018 Cow 44059838 Tattoo: F103

HH ADVANCE 0002X {SOD,DLF,HYF,IEF,MSUDF}  
**FS ADVANCE 3001A ET {DLF,HYF,IEF}**  
 43418093 EL MISS ADVANCE 710T {DLF,HYF,IEF}

CHURCHILL DOMINO 166Y {DLF,HYF,IEF,MSUDF}  
**W4 166 DOMET B569**  
 43651267 W4 188 DOMET T048

BW	WW	YW	Milk	M&G	YSC	REA	MARB	CHB
3.6	54	83	29	56	1.1	0.31	0.06	104

AI'd to CL 1 Domino 7177 on 12/21/19. Pasture exposed to CL 1 Domino 7177 1/12/20 to 3/20/20.

## 126 W4 W219 BANK LADY F127

DOB: 04/10/2018 Cow 44059849 Tattoo: F127

H BANKER 613 ET {DLF,HYF,IEF}  
**W4 613 DOMINO W219**  
 43020572 W4 LADY N074

-S ADV DOM 7008G S135 ET  
**L STAR MS ADVANCE W096**  
 43007978 L STAR GOLDIE M315 R188

BW	WW	YW	Milk	M&G	YSC	REA	MARB	CHB
3.5	41	79	20	41	0.6	0.43	-0.007	114

AI'd to CL 1 Domino 7177 on 12/21/19. Pasture exposed to CL 1 Domino 7177 1/12/20 to 3/20/20.

## 123 W4 392A DOMET F114

DOB: 03/28/2018 Cow 44115481 Tattoo: F114

CL 1 DOMINO 0141 1ET {SOD,CHB,DLF,HYF,IEF}  
**DH DOMINO 392A {DLF,HYF,IEF,MSUDF}**  
 43459361 DH MISS ADVANCE 9156 {DLF,HYF,IEF,MSUDF}

B 72X DOMINO 50Z {DLF,HYF,IEF}  
**B DOMINETTE 567C**  
 43724357 B 5110 DOMINETTE 241Z

BW	WW	YW	Milk	M&G	YSC	REA	MARB	CHB
3.5	58	94	37	65	1.1	0.48	0.013	108

AI'd to C212 Domino 4011 ET on 12/21/19. Pasture exposed to CL 1 Domino 7177 1/12/20 to 3/20/20.

## 127 W4 166Y LADY F141

DOB: 04/21/2018 Cow 44059857 Tattoo: F141

HH ADVANCE 8203U ET {SOD,DLF,IEF}  
**CHURCHILL DOMINO 166Y {DLF,HYF,IEF,MSUDF}**  
 43187895 CHURCHILL LADY 943W {DLF,HYF,IEF}

B EXCEL 20 ET {DLF,HYF,IEF}  
**B LADY EXCEL 453B**  
 43504816 B MISTY ROBIN 181Y

BW	WW	YW	Milk	M&G	YSC	REA	MARB	CHB
5.5	54	82	28	55	1	0.21	0.003	96

Pasture exposed to CL 1 Domino 7177 1/12/20 to 3/20/20.

## 124 W4 B080 LADY DOMET F119

DOB: 03/23/2018 Cow 44059851 Tattoo: F119

W4 -S ADVANCE DOM W168 ET  
**W4 W168 DOMINO B080 {DLF,HYF,IEF,MSUDF}**  
 43520661 W4 4011 DOMET T127

KTP C&M LEGACY 2002 {DLF,HYF,IEF}  
**W4 2002 LADY C008 {DLF,HYF,IEF}**  
 43811440 CHURCHILL ILR LADY 2115Z

BW	WW	YW	Milk	M&G	YSC	REA	MARB	CHB
2.7	51	88	30	55	1	0.33	0.028	99

AI'd to W4 4108 Hometown 106D on 12/21/19. Pasture exposed to CL 1 Domino 7177 1/12/20 to 3/20/20.

## 128 W4 B080 DOMET F149

DOB: 04/01/2018 Cow 44115486 Tattoo: F149

W4 -S ADVANCE DOM W168 ET  
**W4 W168 DOMINO B080 {DLF,HYF,IEF,MSUDF}**  
 43520661 W4 4011 DOMET T127

CL 1 DOMINO 9125W 1ET {SOD,DLF,HYF,IEF}  
**B&B L1 DOMINETTE 3188**  
 43445084 B&B L1 DOMINETTE 8130

BW	WW	YW	Milk	M&G	YSC	REA	MARB	CHB
2.9	48	85	27	52	1	0.33	0.053	89

Pasture exposed to CL 1 Domino 7177 1/12/20 to 3/20/20.

## 125 W4 A311 DOMET F123

DOB: 04/05/2018 Cow 44115483 Tattoo: F123

CL 1 DOMINO 860U {SOD,DLF,HYF,IEF}  
**W4 860 DOMINO A311 {DLF,HYF,IEF,MSUDF}**  
 43728065 C 552 MISS DOM 5011

W4 592 DOMINO 102Y ET {DLF,HYF,IEF,MSUDF}  
**W4 102Y DOMET A017**  
 43519821 W4 522 DOMET W686

BW	WW	YW	Milk	M&G	YSC	REA	MARB	CHB
4.5	55	92	23	50	0.7	0.34	-0.007	98

AI'd to C212 Domino 4011 ET on 12/21/19. Pasture exposed to CL 1 Domino 7177 1/12/20 to 3/20/20.



CL 1 Domino 7177-Natural Service Sire for Lots 78-128



**129 W4 A311 MS DOMINO E507**  
DOB: 11/18/2017 Cow 44059041 Tattoo: E507

CL 1 DOMINO 860U {SOD}{DLF,HYF,IEF}  
W4 860 DOMINO A311 {DLF,HYF,IEF,MSUDF}  
43728065 C 552 MISS DOM 5011

GKB DOWNTOWN B627 ET {DLF,HYF,IEF}  
GKB S&S B627 SARA KAY B926 ET  
42982294 C IDA KAY GOLD 5006 ET {DLF,HYF,IEF}

BW	WW	YW	Milk	M&G	YSC	REA	MARB	CHB
4.5	49	83	26	50	0.5	0.43	-0.047	105

Pasture exposed to Angus bulls from 12/14/19 to 3/20/20.

**131 W4 502Y MS ADVANCE E706**  
DOB: 10/31/2017 Cow 44059099 Tattoo: E706

GO 3196 ADVANCE S109 {SOD}{DLF,HYF,IEF}  
W4 S109 ADVANCE 502Y ET {DLF,HYF,IEF}  
43412411 AMH MISS 2998 281 {DLF,IEF}

HH ADVANCE 7110T ET {DLF,HYF,IEF}  
EL MISS ADVANCE 009X  
43068404 HH MISS ADVANCE 346N 1ET

BW	WW	YW	Milk	M&G	YSC	REA	MARB	CHB
3	45	73	22	45	0.7	0.31	-0.007	101

Pasture exposed to Angus bulls from 12/14/19 to 3/20/20.

**130 W4 0387 MS DOM E588**  
DOB: 10/01/2017 Cow 44059223 Tattoo: E588

UPS DOMINO 5216 {SOD}{DLF,IEF}  
DB 5216 DOM 0387 {DLF,HYF,IEF,MSUDF}  
43146486 DB MISS DOM 6005

CHURCHILL RANCHER 592R {SOD}{DLF,IEF}  
W4 592 DOMET Y557  
43314076 B LADY OXLEY 662

BW	WW	YW	Milk	M&G	YSC	REA	MARB	CHB
4.2	57	94	25	53	1.3	0.38	0.033	95

Pasture exposed to Angus bulls from 12/14/19 to 3/20/20.

**132 W4 W219 LADY BANKER E757**  
DOB: 11/14/2017 Cow 44059114 Tattoo: E757

H BANKER 613 ET {DLF,HYF,IEF}  
W4 613 DOMINO W219  
43020572 W4 LADY N074

C HIDALGO ET {SOD}  
HHR 4006 MS FANTASTIC 802  
42875246 C MS FANTASTIC 5122

BW	WW	YW	Milk	M&G	YSC	REA	MARB	CHB
2.3	42	78	20	41	0.7	0.4	-0.007	109

Pasture exposed to Angus bulls from 12/14/19 to 3/20/20.



## 133 W4 4312 BAILEE E758

DOB: 12/05/2017 Cow 44059885 Tattoo: E758

C MILES MCKEE 2103 ET {CHB}{DLF,HYF,IEF,MSUDF}  
**C BAILEES MILES 4312 ET {DLF,HYF,IEF,MSUDF}**  
 43487323 BR BAILEE 1066 ET {DLF,HYF,IEF}

CL 1 DOMINO 5110R {SOD}{DLF,HYF,IEF}  
**B LADY JUSTICE 295Z**  
 43294182 B STELLA 640

BW	WW	YW	Milk	M&G	YSC	REA	MARB	CHB
3.7	53	85	34	60	0.9	0.45	-0.027	111

Pasture exposed to Angus bulls from 12/14/19 to 3/20/20.

## 137 W4 3001 ADVANCE DOMET F015

DOB: 02/12/2018 Cow 44059864 Tattoo: F015

HH ADVANCE 0002X {SOD}{DLF,HYF,IEF,MSUDF}  
**FS ADVANCE 3001A ET {DLF,HYF,IEF}**  
 43418093 EL MISS ADVANCE 710T {DLF,HYF,IEF}

CL 1 DOMINO 2121Z {DLF,HYF,IEF}  
**MISS DOMINO M525**  
 43597528 KB L1 DOMINETTE 224 Z

BW	WW	YW	Milk	M&G	YSC	REA	MARB	CHB
3.2	61	95	29	60	1.3	0.4	0.013	107

Pasture exposed to Angus bulls from 12/14/19 to 3/20/20.

## 134 W4 4312 MISTY MILES E793

DOB: 12/22/2017 Cow 44059725 Tattoo: E793

C MILES MCKEE 2103 ET {CHB}{DLF,HYF,IEF,MSUDF}  
**C BAILEES MILES 4312 ET {DLF,HYF,IEF,MSUDF}**  
 43487323 BR BAILEE 1066 ET {DLF,HYF,IEF}

RCR L1 AURUM DOMINO 08120 {DLF,HYF,IEF}  
**MISS AURUM 339A**  
 43453821 B MISS ADVANCE 2001M

BW	WW	YW	Milk	M&G	YSC	REA	MARB	CHB
4.7	60	101	29	59	0.8	0.43	-0.007	106

Pasture exposed to Angus bulls from 12/14/19 to 3/20/20.

## 138 W4 3001 MS ADVANCE F016

DOB: 03/09/2018 Cow 44115605 Tattoo: F016

HH ADVANCE 0002X {SOD}{DLF,HYF,IEF,MSUDF}  
**FS ADVANCE 3001A ET {DLF,HYF,IEF}**  
 43418093 EL MISS ADVANCE 710T {DLF,HYF,IEF}

W4 592 DOMINO 102Y ET {DLF,HYF,IEF,MSUDF}  
**W4 102Y MS RANCHER B636**  
 43656115 W4 607 DOMET U129

BW	WW	YW	Milk	M&G	YSC	REA	MARB	CHB
3.8	59	93	26	56	1.1	0.36	0.008	102

Pasture exposed to Angus bulls from 12/14/19 to 3/20/20.

## 135 W4 3001 MS ADVANCE E799

DOB: 12/24/2017 Cow 44059096 Tattoo: E799

HH ADVANCE 0002X {SOD}{DLF,HYF,IEF,MSUDF}  
**FS ADVANCE 3001A ET {DLF,HYF,IEF}**  
 43418093 EL MISS ADVANCE 710T {DLF,HYF,IEF}

C 212 DOMINO 4011 ET {SOD}{CHB}{DLF,HYF,IEF}  
**W4 4011 DOMET U273**  
 42927582 W4 188 DOMET R611

BW	WW	YW	Milk	M&G	YSC	REA	MARB	CHB
3.1	56	91	28	56	1	0.42	-0.007	108

Pasture exposed to Angus bulls from 12/14/19 to 3/20/20.

## 139 W4 407 DOMET F031

DOB: 02/24/2018 Cow 44059847 Tattoo: F031

HH ADVANCE 2125Z {DLF,HYF,IEF}  
**FS ADVANCE 407B {DLF,HYF,IEF}**  
 43466166 CL 1 DOMINETTE 057X {DLF,HYF,IEF}

CL 1 DOMINO 465P {DLF,HYF,IEF}  
**MISS DOMINO M112 {DLF,HYF,IEF}**  
 43232859 MISS DOMINO M901A {DOD}{DLF,HYF,IEC}

BW	WW	YW	Milk	M&G	YSC	REA	MARB	CHB
2.7	48	76	27	51	1	0.23	-0.032	94

Pasture exposed to Angus bulls from 12/14/19 to 3/20/20.

## 136 W4 3001 MS ADVANCE F011

DOB: 03/25/2018 Cow 44115604 Tattoo: F011

HH ADVANCE 0002X {SOD}{DLF,HYF,IEF,MSUDF}  
**FS ADVANCE 3001A ET {DLF,HYF,IEF}**  
 43418093 EL MISS ADVANCE 710T {DLF,HYF,IEF}

KB L1 DOMINO 281Z {DLF,HYF,IEF}  
**MISS DOMINO M502**  
 43597512 KB L1 DOMINETTE 3137 A

BW	WW	YW	Milk	M&G	YSC	REA	MARB	CHB
3.3	55	89	29	56	1.2	0.28	-0.007	100

Pasture exposed to Angus bulls from 12/14/19 to 3/20/20.

## 140 W4 407 MS ADVANCE F033

DOB: 03/20/2018 Cow 44115606 Tattoo: F033

HH ADVANCE 2125Z {DLF,HYF,IEF}  
**FS ADVANCE 407B {DLF,HYF,IEF}**  
 43466166 CL 1 DOMINETTE 057X {DLF,HYF,IEF}

CL 1 DOMINO 193Y 1ET {DLF,HYF,IEF}  
**MISS DOMINO M430**  
 43514138 MISS DOMINO M513

BW	WW	YW	Milk	M&G	YSC	REA	MARB	CHB
1.9	39	64	28	48	0.8	0.14	-0.027	91

Pasture exposed to Angus bulls from 12/14/19 to 3/20/20.

## 141 W4 166Y DOMET F043

DOB: 03/04/2018 Cow 44059848 Tattoo: F043

HH ADVANCE 8203U ET {SOD}{DLF,IEF}  
**CHURCHILL DOMINO 166Y** {DLF,HYF,IEF,MSUDF}  
 43187895 CHURCHILL LADY 943W {DLF,HYF,IEF}

C PURE GOLD 6224 ET  
**W4 6224 DOMINO W454**  
 43020686 H VERONICA 6089 ET

BW	WW	YW	Milk	M&G	YSC	REA	MARB	CHB
4.8	49	71	25	50	1	0.3	0.013	96

Pasture exposed to Angus bulls from 12/14/19 to 3/20/20.

## 145 W4 166Y DOMET F057

DOB: 04/05/2018 Cow 44115610 Tattoo: F057

HH ADVANCE 8203U ET {SOD}{DLF,IEF}  
**CHURCHILL DOMINO 166Y** {DLF,HYF,IEF,MSUDF}  
 43187895 CHURCHILL LADY 943W {DLF,HYF,IEF}

804 HIGH DOMINO 501  
**BC REAL PRINCESS F313**  
 42651438 BC REAL PRINCESS C11

BW	WW	YW	Milk	M&G	YSC	REA	MARB	CHB
5.1	44	65	25	47	0.8	0.19	0.003	92

Pasture exposed to Angus bulls from 12/14/19 to 3/20/20.

## 142 W4 B080 DOMET F046

DOB: 05/02/2018 Cow 44115607 Tattoo: F046

W4 -S ADVANCE DOM W168 ET  
**W4 W168 DOMINO B080** {DLF,HYF,IEF,MSUDF}  
 43520661 W4 4011 DOMET T127

CL 1 DOMINO 955W {SOD}{CHB}{DLF,HYF,IEF}  
**W4 955 DOMET 111Z ET**  
 P43337645 BR 74 ALAINNA 3113

BW	WW	YW	Milk	M&G	YSC	REA	MARB	CHB
3	50	87	28	53	0.9	0.48	0.023	100

Pasture exposed to Angus bulls from 12/14/19 to 3/20/20.

## 146 W4 0387 DOMET F064

DOB: 04/05/2018 Cow 44115611 Tattoo: F064

UPS DOMINO 5216 {SOD}{DLF,IEF}  
**DB 5216 DOM 0387** {DLF,HYF,IEF,MSUDF}  
 43146486 DB MISS DOM 6005

W4 MR MVP R612  
**W4 612 DOMET U782**  
 43014971 W4 1037 DOMET S043

BW	WW	YW	Milk	M&G	YSC	REA	MARB	CHB
3.3	55	84	22	49	1.1	0.36	0.008	92

Pasture exposed to Angus bulls from 12/14/19 to 3/20/20.

## 143 W4 407 MS ADVANCE F048

DOB: 04/05/2018 Cow 44115608 Tattoo: F048

HH ADVANCE 2125Z {DLF,HYF,IEF}  
**FS ADVANCE 407B** {DLF,HYF,IEF}  
 43466166 CL 1 DOMINETTE 057X {DLF,HYF,IEF}

DOMINO M021  
**MISS DOMINO M408B**  
 43514154 MISS DOMINO M030

BW	WW	YW	Milk	M&G	YSC	REA	MARB	CHB
3.4	50	80	27	52	1	0.28	-0.022	96

Pasture exposed to Angus bulls from 12/14/19 to 3/20/20.

## 147 W4 0387 DOMET F066

DOB: 03/06/2018 Cow 44059836 Tattoo: F066

UPS DOMINO 5216 {SOD}{DLF,IEF}  
**DB 5216 DOM 0387** {DLF,HYF,IEF,MSUDF}  
 43146486 DB MISS DOM 6005

HH ADVANCE 4140P {SOD}{CHB}{DLF,IEF}  
**-S MS GOLD ADVANCE 4115 T211**  
 42918190 C MS PURE GOLD 4115 {DLF,IEF}

BW	WW	YW	Milk	M&G	YSC	REA	MARB	CHB
4	56	92	26	54	1.3	0.62	0.003	106

Pasture exposed to Angus bulls from 12/14/19 to 3/20/20.

## 144 W4 392A DOMET F053

DOB: 04/05/2018 Cow 44115609 Tattoo: F053

CL 1 DOMINO 0141 1ET {SOD}{CHB}{DLF,HYF,IEF}  
**DH DOMINO 392A** {DLF,HYF,IEF,MSUDF}  
 43459361 DH MISS ADVANCE 9156 {DLF,HYF,IEF,MSUDF}

F 157K RIBSTONE 763 {SOD}{DLF,HYF,IEF}  
**B MISS RIBSTONE 540C**  
 43722932 B MISTY ROBIN 243Z

BW	WW	YW	Milk	M&G	YSC	REA	MARB	CHB
3.7	56	96	30	58	1.2	0.4	0.023	106

Pasture exposed to Angus bulls from 12/14/19 to 3/20/20.

## 148 W4 0387 DOMET F072

DOB: 04/08/2018 Cow 44115612 Tattoo: F072

UPS DOMINO 5216 {SOD}{DLF,IEF}  
**DB 5216 DOM 0387** {DLF,HYF,IEF,MSUDF}  
 43146486 DB MISS DOM 6005

C 212 DOMINO 4011 ET {SOD}{CHB}{DLF,HYF,IEF}  
**W4 4011 DOMET T122**  
 42841288 W4 8055 DOMET P178

BW	WW	YW	Milk	M&G	YSC	REA	MARB	CHB
3.6	52	88	22	48	1.2	0.44	-0.002	97

Pasture exposed to Angus bulls from 12/14/19 to 3/20/20.



**149 W4 1600 DOMET F084**  
 DOB: 04/15/2018 Cow 44115615 Tattoo: F084

CHURCHILL SENSATION 028X {SOD}{DLF,HYF,IEF}  
**KGB TFR KR SENSATION 028X 1600 {DLF,HYF,IEF}**  
 43772981 H LAYLA 3521

W4 613 DOMINO W219  
**W4 W219 DOMET D042**  
 43935485 W4 188 DOMET T045

BW	WW	YW	Milk	M&G	YSC	REA	MARB	CHB
2.8	51	85	31	57	1.1	0.41	0.003	108

Pasture exposed to Angus bulls from 12/14/19 to 3/20/20.

**153 W4 106D MS HOMETOWN F105**  
 DOB: 03/31/2018 Cow 44115621 Tattoo: F105

C 10Y HOMETOWN 4108 {DLF,HYF,IEF}  
**W4 4108 HOMETOWN 106D ET {DLF,HYF,IEF,MSUDF}**  
 43742956 HH MISS ADVANCE 9168W {DLF,HYF,IEF}

CL 1 DOMINO 338A {DLF,HYF,IEF}  
**W4 338 DOMET D067**  
 43931804 MISS DOMINO M701

BW	WW	YW	Milk	M&G	YSC	REA	MARB	CHB
3.1	48	75	32	56	1.2	0.34	0.013	100

Pasture exposed to Angus bulls from 12/14/19 to 3/20/20.

**150 W4 166Y DOMET F086**  
 DOB: 04/16/2018 Cow 44115618 Tattoo: F086

HH ADVANCE 8203U ET {SOD}{DLF,IEF}  
**CHURCHILL DOMINO 166Y {DLF,HYF,IEF,MSUDF}**  
 43187895 CHURCHILL LADY 943W {DLF,HYF,IEF}

W4 613 DOMINO W219  
**W4 W219 DOMET B140**  
 43520665 C COWGIRL 7166

BW	WW	YW	Milk	M&G	YSC	REA	MARB	CHB
5.1	45	75	25	48	0.8	0.24	0.008	101

Pasture exposed to Angus bulls from 12/14/19 to 3/20/20.

**154 W4 106D MS HOMETOWN F106**  
 DOB: 04/01/2018 Cow 44115626 Tattoo: F106

C 10Y HOMETOWN 4108 {DLF,HYF,IEF}  
**W4 4108 HOMETOWN 106D ET {DLF,HYF,IEF,MSUDF}**  
 43742956 HH MISS ADVANCE 9168W {DLF,HYF,IEF}

W4 955 DOMINO 136Y 2ET {DLF,HYF,IEF,MSUDF}  
**W4 502Y DOMET D009**  
 43930654 W4 146 AURUM MARY 9406

BW	WW	YW	Milk	M&G	YSC	REA	MARB	CHB
3.5	48	78	28	52	1	0.38	0.023	100

Pasture exposed to Angus bulls from 12/14/19 to 3/20/20.

**151 W4 392A DOMET F092**  
 DOB: 04/21/2018 Cow 44115620 Tattoo: F092

CL 1 DOMINO 0141 1ET {SOD}{CHB}{DLF,HYF,IEF}  
**DH DOMINO 392A {DLF,HYF,IEF,MSUDF}**  
 43459361 DH MISS ADVANCE 9156 {DLF,HYF,IEF,MSUDF}

CL 1 DOMINO 052X 1ET {DLF,HYF,IEF}  
**B DOMINETTE 577C**  
 43724399 B 295 DOMINETTE 808

BW	WW	YW	Milk	M&G	YSC	REA	MARB	CHB
3.6	52	88	32	58	0.8	0.44	0.003	103

Pasture exposed to Angus bulls from 12/14/19 to 3/20/20.

**155 W4 338A MAGZ DOMET F107**  
 DOB: 04/25/2018 Cow 44115630 Tattoo: F107

CL 1 DOMINO 105Y {SOD}{DLF,HYF,IEF}  
**CL 1 DOMINO 338A {DLF,HYF,IEF}**  
 43379685 CL 1 DOMINETTE 1146Y {DLF,HYF,IEF}

BAR-S-SOF MR 88X 310 {DLF,HYF,IEF}  
**C/C 310 MAGALICIOUS C516**  
 43680275 W4 955 MAGGIE 134Y ET {DLF,HYF,IEF}

BW	WW	YW	Milk	M&G	YSC	REA	MARB	CHB
3.3	54	83	37	64	1.2	0.58	-0.017	112

Pasture exposed to Angus bulls from 12/14/19 to 3/20/20.

**152 W4 106D HOMETOWN F097**  
 DOB: 03/20/2018 Cow 44059841 Tattoo: F097

C 10Y HOMETOWN 4108 {DLF,HYF,IEF}  
**W4 4108 HOMETOWN 106D ET {DLF,HYF,IEF,MSUDF}**  
 43742956 HH MISS ADVANCE 9168W {DLF,HYF,IEF}

W4 613 DOMINO W219  
**W4 W219 DUTCHESS D109**  
 43931808 W4 DUTCHESS W422 ET

BW	WW	YW	Milk	M&G	YSC	REA	MARB	CHB
3.6	47	81	27	50	0.9	0.37	0.013	106

Pasture exposed to Angus bulls from 12/14/19 to 3/20/20.

**156 W4 407 DOMET F108**  
 DOB: 04/22/2018 Cow 44115631 Tattoo: F108

HH ADVANCE 2125Z {DLF,HYF,IEF}  
**FS ADVANCE 407B {DLF,HYF,IEF}**  
 43466166 CL 1 DOMINETTE 057X {DLF,HYF,IEF}

CL 1 DOMINO 4117P 1ET {DLF,HYF,IEF}  
**MISS DOMINO M923 {DLF,HYF,IEF}**  
 43048090 MISS DOMINO M313

BW	WW	YW	Milk	M&G	YSC	REA	MARB	CHB
2.4	45	71	25	47	0.9	0.17	-0.042	90

Pasture exposed to Angus bulls from 12/14/19 to 3/20/20.

## 157 W4 392A DOMET F109

DOB: 04/26/2018 Cow 44115632 Tattoo: F109

CL 1 DOMINO 0141 1ET {SOD}{CHB}{DLF,HYF,IEF}  
DH DOMINO 392A {DLF,HYF,IEF,MSUDF}  
43459361 DH MISS ADVANCE 9156 {DLF,HYF,IEF,MSUDF}

CL 1 DOMINO 314A {DLF,HYF,IEF}  
B PI LADY 544C  
43722935 B 295 DOMINETTE 932

BW	WW	YW	Milk	M&G	YSC	REA	MARB	CHB
3.2	55	94	33	60	1	0.34	0.028	100

Pasture exposed to Angus bulls from 12/14/19 to 3/20/20.

## 161 W4 B080 DOMET F129

DOB: 05/12/2018 Cow 44059843 Tattoo: F129

W4 -S ADVANCE DOM W168 ET  
W4 W168 DOMINO B080 {DLF,HYF,IEF,MSUDF}  
43520661 W4 4011 DOMET T127

H W4 GRIZZLY 0146 ET {DLF,HYF,IEF}  
W4 0146 GRIZZLY GIRL 102C ET  
P43596309 W4 279R DOMINET 9520 ET {DLF,HYF,IEF}

BW	WW	YW	Milk	M&G	YSC	REA	MARB	CHB
3.2	53	90	28	55	1.1	0.54	0.008	102

Pasture exposed to Angus bulls from 12/14/19 to 3/20/20.

## 158 W4 W219 BANK LADY F111

DOB: 03/28/2018 Cow 44059866 Tattoo: F111

H BANKER 613 ET {DLF,HYF,IEF}  
W4 613 DOMINO W219  
43020572 W4 LADY N074

B CHURCHILL 6033  
W4 6033 DOMET U861  
43015037 W4 041 DOMET R563

BW	WW	YW	Milk	M&G	YSC	REA	MARB	CHB
3.9	40	76	19	39	0.6	0.3	0.003	106

Pasture exposed to Angus bulls from 12/14/19 to 3/20/20.

## 162 W4 548C TOP DOMET F130

DOB: 04/16/2018 Cow 44115635 Tattoo: F130

H/TSR/CHEZ/FULL THROTTLE ET {DLF,HYF,IEF}  
CHURCHILL TOP SPEED 548C ET {DLF,HYF,IEF,MSUDF}  
43586918 CHURCHILL LADY 002X ET {DLF,HYF,IEF,MSUDF}

H W4 GRIZZLY 0146 ET {DLF,HYF,IEF}  
W4 0146 DOMINETTE 113C ET  
43596307 W4 627 DOMINETTE W493 ET {DLF,HYF,IEF}

BW	WW	YW	Milk	M&G	YSC	REA	MARB	CHB
3.6	57	93	23	52	0.8	0.49	-0.022	109

Pasture exposed to Angus bulls from 12/14/19 to 3/20/20.

## 159 W4 W219 BANK LADY F117

DOB: 04/01/2018 Cow 44059854 Tattoo: F117

H BANKER 613 ET {DLF,HYF,IEF}  
W4 613 DOMINO W219  
43020572 W4 LADY N074

LONE STAR DOMINO 484 T228  
LONE STAR DOMINETTE T228 Y225  
43287664 L STAR DONNA 497L R050

BW	WW	YW	Milk	M&G	YSC	REA	MARB	CHB
2.6	37	74	24	42	0.7	0.3	0.003	109

Pasture exposed to Angus bulls from 12/14/19 to 3/20/20.

## 163 W4 W219 BANK LADY F136

DOB: 05/18/2018 Cow 44115636 Tattoo: F136

H BANKER 613 ET {DLF,HYF,IEF}  
W4 613 DOMINO W219  
43020572 W4 LADY N074

W4 4011 DOMINO S025 {DLF,IEF}  
W4 S025 MS KAY A111  
43426931 B LADY BULLSEYE 629

BW	WW	YW	Milk	M&G	YSC	REA	MARB	CHB
3.6	42	76	25	46	0.7	0.4	-0.007	110

Pasture exposed to Angus bulls from 12/14/19 to 3/20/20.

## 160 W4 B080 PRINCESS F124

DOB: 04/05/2018 Cow 44115633 Tattoo: F124

W4 -S ADVANCE DOM W168 ET  
W4 W168 DOMINO B080 {DLF,HYF,IEF,MSUDF}  
43520661 W4 4011 DOMET T127

BC REAL PRINCE G76  
BC REAL PRINCESS G207  
42829771 BC REAL PRINCESS W28

BW	WW	YW	Milk	M&G	YSC	REA	MARB	CHB
3.5	45	77	22	45	0.8	0.33	0.018	94

Pasture exposed to Angus bulls from 12/14/19 to 3/20/20.

## 164 W4 A311 DOMET F137

DOB: 04/23/2018 Cow 44115638 Tattoo: F137

CL 1 DOMINO 860U {SOD}{DLF,HYF,IEF}  
W4 860 DOMINO A311 {DLF,HYF,IEF,MSUDF}  
43728065 C 552 MISS DOM 5011

W4 4011 DOMINO S025 {DLF,IEF}  
W4 S025 DOMET Z190  
43414079 W4 25 DOMET P245

BW	WW	YW	Milk	M&G	YSC	REA	MARB	CHB
2.8	43	74	25	47	0.7	0.37	-0.017	97

Pasture exposed to Angus bulls from 12/14/19 to 3/20/20.



## 165 W4 4312 BAILEE DOM F146

DOB: 04/24/2018 Cow 44115639 Tattoo: F146

C MILES MCKEE 2103 ET {CHB}{DLF,HYF,IEF,MSUDF}  
**C BAILEES MILES 4312 ET {DLF,HYF,IEF,MSUDF}**  
 43487323 BR BAILEE 1066 ET {DLF,HYF,IEF}

CHURCHILL MVP 188 {SOD}{CHB}{DLF,HYF,IEF}  
**W4 188 MS DOMINO U556**  
 43014855 JAB 66 DOMINETTE 956J

BW	WW	YW	Milk	M&G	YSC	REA	MARB	CHB
4.2	53	86	27	54	0.7	0.42	-0.007	106

Pasture exposed to Angus bulls from 12/14/19 to 3/20/20.

## 169 W4 A311 DOMET F157

DOB: 05/16/2018 Cow 44115643 Tattoo: F157

CL 1 DOMINO 860U {SOD}{DLF,HYF,IEF}  
**W4 860 DOMINO A311 {DLF,HYF,IEF,MSUDF}**  
 43728065 C 552 MISS DOM 5011

W4 592 DOMINO 102Y ET {DLF,HYF,IEF,MSUDF}  
**W4 102Y DOMET A019**  
 43519823 W4 6058 DOMET W711

BW	WW	YW	Milk	M&G	YSC	REA	MARB	CHB
4.1	56	90	22	50	0.7	0.29	-0.007	94

Pasture exposed to Angus bulls from 12/14/19 to 3/20/20.

## 166 W4 W219 BANK LADY F148

DOB: 04/25/2018 Cow 44115640 Tattoo: F148

H BANKER 613 ET {DLF,HYF,IEF}  
**W4 613 DOMINO W219**  
 43020572 W4 LADY N074

H BANKER 613 ET {DLF,HYF,IEF}  
**W4 613 DOMET A028**  
 43513623 W4 072 DOMET M067

BW	WW	YW	Milk	M&G	YSC	REA	MARB	CHB
3.6	44	86	23	45	0.6	0.43	0.003	116

Pasture exposed to Angus bulls from 12/14/19 to 3/20/20.

## 170 W4 A311 DOMET F162

DOB: 05/18/2018 Cow 44115645 Tattoo: F162

CL 1 DOMINO 860U {SOD}{DLF,HYF,IEF}  
**W4 860 DOMINO A311 {DLF,HYF,IEF,MSUDF}**  
 43728065 C 552 MISS DOM 5011

CHURCHILL RANCHER 592R {SOD}{DLF,IEF}  
**W4 592 DOMET 153Y 2ET**  
 43212106 C MS GAME PLAN 4007 ET

BW	WW	YW	Milk	M&G	YSC	REA	MARB	CHB
4	51	84	23	48	0.7	0.37	-0.002	103

Pasture exposed to Angus bulls from 12/14/19 to 3/20/20.

## 167 W4 A311 DOMET F151

DOB: 05/08/2018 Cow 44115641 Tattoo: F151

CL 1 DOMINO 860U {SOD}{DLF,HYF,IEF}  
**W4 860 DOMINO A311 {DLF,HYF,IEF,MSUDF}**  
 43728065 C 552 MISS DOM 5011

C 212 DOMINO 4011 ET {SOD}{CHB}{DLF,HYF,IEF}  
**W4 4011 DOMET Y507**  
 43314031 W4 6213 DOMET U711

BW	WW	YW	Milk	M&G	YSC	REA	MARB	CHB
3.3	50	85	25	50	0.7	0.42	-0.037	104

Pasture exposed to Angus bulls from 12/14/19 to 3/20/20.

## 171 W4 W219 BANK LADY F163

DOB: 05/20/2018 Cow 44059839 Tattoo: F163

H BANKER 613 ET {DLF,HYF,IEF}  
**W4 613 DOMINO W219**  
 43020572 W4 LADY N074

B 295 DOMINO 6058  
**W4 6058 DOMET Z608**  
 43491734 B CHURCHLADY 770

BW	WW	YW	Milk	M&G	YSC	REA	MARB	CHB
4.1	43	80	23	44	0.8	0.29	-0.002	106

Pasture exposed to Angus bulls from 12/14/19 to 3/20/20.

## 168 W4 0387 MS DOM F152

DOB: 05/10/2018 Cow 44115642 Tattoo: F152

UPS DOMINO 5216 {SOD}{DLF,IEF}  
**DB 5216 DOM 0387 {DLF,HYF,IEF,MSUDF}**  
 43146486 DB MISS DOM 6005

HH ADVANCE 7110T ET {DLF,HYF,IEF}  
**EL MISS ADVANCE 947W**  
 43068393 EL MISS ADVANCE 537R

BW	WW	YW	Milk	M&G	YSC	REA	MARB	CHB
3	52	82	23	50	1.4	0.36	0.018	93

Pasture exposed to Angus bulls from 12/14/19 to 3/20/20.

## 172 Commercial Hereford

Pasture exposed to Angus bulls from 12/14/19 to 3/20/20.

## 173 Commercial Hereford

Pasture exposed to Angus bulls from 12/14/19 to 3/20/20.

## 174 Commercial Hereford

Pasture exposed to Angus bulls from 12/14/19 to 3/20/20.



**175 W4 0387 DOMET F502**  
DOB: 10/03/2018 Cow 44114155 Tattoo: F502

UPS DOMINO 5216 {SOD}{DLF,IEF}  
DB 5216 DOM 0387 {DLF,HYF,IEF,MSUDF}  
43146486 DB MISS DOM 6005

W4 205 DOMET U697  
43014800 L STAR GOLDIE N025

BW	WW	YW	Milk	M&G	YSC	REA	MARB	CHB
4	50	84	24	49	1.2	0.36	-0.002	94

**177 W4 310 LADY RIBEYE F507**  
DOB: 10/05/2018 Cow 44114157 Tattoo: F507

NJW 98S R117 RIBEYE 88X ET {SOD}{DLF,HYF,IEF,MSUDF}  
BAR-S-SOF MR 88X 310 {DLF,HYF,IEF}  
43396221 BHF MISS KOOTER 602 {DLF,HYF,IEF}

CL 1 DOMINO 5110R {SOD}{DLF,HYF,IEF}  
B MISS DOMINETTE 224Z  
43294190 B LADY EXCELL 4042

BW	WW	YW	Milk	M&G	YSC	REA	MARB	CHB
3.4	53	83	34	61	0.9	0.44	-0.027	107

**176 W4 3001 DOMET F504**  
DOB: 09/05/2018 Cow 44114156 Tattoo: F504

HH ADVANCE 0002X {SOD}{DLF,HYF,IEF,MSUDF}  
FS ADVANCE 3001A ET {DLF,HYF,IEF}  
43418093 EL MISS ADVANCE 710T {DLF,HYF,IEF}

FS ADVANCE 3001A ET {DLF,HYF,IEF}  
W4 3001 MISS ADVANCE D032  
43873992 B MISTY ROBIN 483B

BW	WW	YW	Milk	M&G	YSC	REA	MARB	CHB
3.1	61	101	30	61	1.3	0.4	-0.002	108

**178 W4 392A DOMET F514**  
DOB: 09/11/2018 Cow 44114158 Tattoo: F514

CL 1 DOMINO 0141 1ET {SOD}{CHB}{DLF,HYF,IEF}  
DH DOMINO 392A {DLF,HYF,IEF,MSUDF}  
43459361 DH MISS ADVANCE 9156 {DLF,HYF,IEF,MSUDF}

CL 1 DOMINO 052X 1ET {DLF,HYF,IEF}  
B DOMINETTE 450B  
43620899 B LADY RIBSTONE 150Y

BW	WW	YW	Milk	M&G	YSC	REA	MARB	CHB
3.7	57	96	33	62	1	0.51	0.018	108



**179 W4 0387 DOMET F518**  
 DOB: 09/13/2018 Cow 44114159 Tattoo: F518

UPS DOMINO 5216 {SOD}{DLF,IEF}  
**DB 5216 DOM 0387 {DLF,HYF,IEF,MSUDF}**  
 43146486 DB MISS DOM 6005

W4 MR MVP R612  
**W4 612 DOMET A610**  
 43517195 WR 188 DOMET R009

BW	WW	YW	Milk	M&G	YSC	REA	MARB	CHB
4	54	85	22	49	1.2	0.36	0.018	93

**183 W4 548C TOP LADY F545**  
 DOB: 10/15/2018 Cow 44114166 Tattoo: F545

H/TSR/CHEZ/FULL THROTTLE ET {DLF,HYF,IEF}  
**CHURCHILL TOP SPEED 548C ET {DLF,HYF,IEF,MSUDF}**  
 43586918 CHURCHILL LADY 002X ET {DLF,HYF,IEF,MSUDF}

CL 1 DOMINO 465P {DLF,HYF,IEF}  
**MISS DOMINO M414**  
 43515466 MISS DOMINO M122 {DLF,HYF,IEF}

BW	WW	YW	Milk	M&G	YSC	REA	MARB	CHB
3.2	51	82	23	48	0.8	0.4	-0.022	107

**180 W4 392A DOMET F526**  
 DOB: 09/14/2018 Cow 44114160 Tattoo: F526

CL 1 DOMINO 0141 1ET {SOD}{CHB}{DLF,HYF,IEF}  
**DH DOMINO 392A {DLF,HYF,IEF,MSUDF}**  
 43459361 DH MISS ADVANCE 9156 {DLF,HYF,IEF,MSUDF}

W4 4011 DOMINO T154 {DLF,HYF,IEF}  
**W4 T154 DOMET B062**  
 43520648 C 125 MS DOM 7028

BW	WW	YW	Milk	M&G	YSC	REA	MARB	CHB
3.3	52	92	30	56	0.9	0.54	0.008	110

**184 W4 338A DOMET F547**  
 DOB: 09/23/2018 Cow 44114168 Tattoo: F547

CL 1 DOMINO 105Y {SOD}{DLF,HYF,IEF}  
**CL 1 DOMINO 338A {DLF,HYF,IEF}**  
 43379685 CL 1 DOMINETTE 1146Y {DLF,HYF,IEF}

W4 955 DOMINO 136Y 2ET {DLF,HYF,IEF,MSUDF}  
**W4 136Y DOMET B129Y**  
 43547859 CHURCHILL LADY 891U {DLF,HYF,IEF}

BW	WW	YW	Milk	M&G	YSC	REA	MARB	CHB
2.9	49	78	33	58	1.2	0.45	0.013	112

**181 W4 310 LADY RIBEYE F529**  
 DOB: 09/10/2018 Cow 44114162 Tattoo: F529

NJW 98S R117 RIBEYE 88X ET {SOD}{DLF,HYF,IEF,MSUDF}  
**BAR-S-SOF MR 88X 310 {DLF,HYF,IEF}**  
 43396221 BHF MISS KOOTER 602 {DLF,HYF,IEF}

L STAR DOMINO 212M S105  
**W4 S105 DOMET Z537**  
 43491712 W4 188 DOMET S606

BW	WW	YW	Milk	M&G	YSC	REA	MARB	CHB
4.3	51	78	28	54	0.7	0.45	-0.012	105

**185 W4 392A DOMET F555**  
 DOB: 09/28/2018 Cow 44114170 Tattoo: F555

CL 1 DOMINO 0141 1ET {SOD}{CHB}{DLF,HYF,IEF}  
**DH DOMINO 392A {DLF,HYF,IEF,MSUDF}**  
 43459361 DH MISS ADVANCE 9156 {DLF,HYF,IEF,MSUDF}

W4 9005J POWER HOUSE M205  
**W4 205 DOMINO X279**  
 43165902 BC REAL PRINCESS F283

BW	WW	YW	Milk	M&G	YSC	REA	MARB	CHB
4	53	91	30	56	0.9	0.39	0.013	101

**182 W4 310 LADY RIBEYE F530**  
 DOB: 09/10/2018 Cow 44114165 Tattoo: F530

NJW 98S R117 RIBEYE 88X ET {SOD}{DLF,HYF,IEF,MSUDF}  
**BAR-S-SOF MR 88X 310 {DLF,HYF,IEF}**  
 43396221 BHF MISS KOOTER 602 {DLF,HYF,IEF}

UPS DOMINO 3027 {SOD}{DLF,HYF,IEF,MSUDF}  
**CHURCHILL LADY 0105X {DLF,HYF,IEF}**  
 43085248 CHURCHILL LADY 8207U

BW	WW	YW	Milk	M&G	YSC	REA	MARB	CHB
3.5	50	80	31	56	0.7	0.45	-0.007	109

**186 W4 338A DOMET F561**  
 DOB: 09/27/2018 Cow 44114172 Tattoo: F561

CL 1 DOMINO 105Y {SOD}{DLF,HYF,IEF}  
**CL 1 DOMINO 338A {DLF,HYF,IEF}**  
 43379685 CL 1 DOMINETTE 1146Y {DLF,HYF,IEF}

H5 408 DOMINO 881  
**DH L1 DOMINETTE 480**  
 43485034 DH L1 DOMINETTE 161

BW	WW	YW	Milk	M&G	YSC	REA	MARB	CHB
2.7	49	80	33	57	1.4	0.33	0.008	104

**187 W4 B080 DOMET F569**  
 DOB: 09/28/2018 Cow 44114174 Tattoo: F569

W4 -S ADVANCE DOM W168 ET  
**W4 W168 DOMINO B080 {DLF,HYF,IEF,MSUDF}**  
 43520661 W4 4011 DOMET T127

CL 1 DOMINO 314A {DLF,HYF,IEF}  
**B PI LADY 537C**  
 43722929 B ROXANNE 851

BW	WW	YW	Milk	M&G	YSC	REA	MARB	CHB
2.5	47	83	29	53	1.1	0.32	0.038	94

**191 W4 102Y RANCHER GAL F594**  
 DOB: 10/10/2018 Cow 44114186 Tattoo: F594

CHURCHILL RANCHER 592R {SOD}{DLF,IEF}  
**W4 592 DOMINO 102Y ET {DLF,HYF,IEF,MSUDF}**  
 43212083 BR 74 ALAINNA 3113

GO THE NATURAL T15 {DLF,HYF,IEF}  
**W4 T15 DOMET X678**  
 43211899 WR 188 DOMET R009

BW	WW	YW	Milk	M&G	YSC	REA	MARB	CHB
5	52	84	24	50	0.6	0.17	0.028	94

**188 W4 407 DOMET F571**  
 DOB: 09/29/2018 Cow 44114177 Tattoo: F571

HH ADVANCE 2125Z {DLF,HYF,IEF}  
**FS ADVANCE 407B {DLF,HYF,IEF}**  
 43466166 CL 1 DOMINETTE 057X {DLF,HYF,IEF}

HH ADVANCE 8203U ET {SOD}{DLF,IEF}  
**W4 8203 DOMET 100Y ET**  
 43211681 RCR AURUM MARY 02086

BW	WW	YW	Milk	M&G	YSC	REA	MARB	CHB
4.1	51	77	24	49	1	0.23	-0.022	95

**192 W4 B080 DOMET F597**  
 DOB: 10/10/2018 Cow 44114189 Tattoo: F597

W4 -S ADVANCE DOM W168 ET  
**W4 W168 DOMINO B080 {DLF,HYF,IEF,MSUDF}**  
 43520661 W4 4011 DOMET T127

CL 1 DOMINO 072X {DLF,HYF,IEF}  
**B 72X DOMINETTE 566C**  
 43724346 B 5110 DOMINETTE 299Z {DOD}

BW	WW	YW	Milk	M&G	YSC	REA	MARB	CHB
2.5	47	77	33	56	1.1	0.43	0.018	102

**189 W4 548C TOP LADY F580**  
 DOB: 10/04/2018 Cow 44114180 Tattoo: F580

H/TSR/CHEZ/FULL THROTTLE ET {DLF,HYF,IEF}  
**CHURCHILL TOP SPEED 548C ET {DLF,HYF,IEF,MSUDF}**  
 43586918 CHURCHILL LADY 002X ET {DLF,HYF,IEF,MSUDF}

W4 MR MVP R612  
**W4 R612 DOMET Y681**  
 43314196 W4 1037 DOMET S668

BW	WW	YW	Milk	M&G	YSC	REA	MARB	CHB
4	55	86	18	46	0.7	0.4	-0.007	105

**193 W4 102Y RANCHER GAL F599**  
 DOB: 10/06/2018 Cow 44114192 Tattoo: F599

CHURCHILL RANCHER 592R {SOD}{DLF,IEF}  
**W4 592 DOMINO 102Y ET {DLF,HYF,IEF,MSUDF}**  
 43212083 BR 74 ALAINNA 3113

C HIDALGO ET {SOD}  
**W4 4006 DOMET W787**  
 43119702 KE SUTTER 236G 6078

BW	WW	YW	Milk	M&G	YSC	REA	MARB	CHB
5.2	58	90	21	50	0.8	0.33	0.013	97

**190 W4 548C TOP LADY F584**  
 DOB: 10/04/2018 Cow 44114183 Tattoo: F584

H/TSR/CHEZ/FULL THROTTLE ET {DLF,HYF,IEF}  
**CHURCHILL TOP SPEED 548C ET {DLF,HYF,IEF,MSUDF}**  
 43586918 CHURCHILL LADY 002X ET {DLF,HYF,IEF,MSUDF}

H HVR DOMINO 870 ET  
**W4 870 DOMET Y541**  
 43314060 W4 6025 DOMET U659

BW	WW	YW	Milk	M&G	YSC	REA	MARB	CHB
3.9	55	89	22	49	0.6	0.49	-0.007	113

**194 W4 0387 OUTCROSS LADY DOM F611**  
 DOB: 10/18/2018 Cow 44114197 Tattoo: F611

UPS DOMINO 5216 {SOD}{DLF,IEF}  
**DB 5216 DOM 0387 {DLF,HYF,IEF,MSUDF}**  
 43146486 DB MISS DOM 6005

GOLDEN OAK OUTCROSS 18U {SOD}{CHB}{DLF,HYF,IEF,MSUDF}  
**W4 OUTCROSS DIVA 104Z ET**  
 P43337642 C MS PURE GOLD 5007 ET {DLF,HYF,IEF}

BW	WW	YW	Milk	M&G	YSC	REA	MARB	CHB
4.8	58	96	25	54	1.3	0.51	0.013	101



## 195 W4 DIABLO DOMET F612

DOB: 10/17/2018 Cow 44114201 Tattoo: F612

SR INDIGO 1181Y {DLF,HYF,IEF}  
**SR DIABLO 613A {DLF,HYF,IEF,MSUDF}**  
 43421657 SR VALORIE 8128 {DOD}{DLF,HYF,IEF}

F 9126 DOMINO 400 {SOD}{DLF,HYF,IEF}  
**F 400 DOMINETTE 008 {DLF,HYF,IEF}**  
 43076695 F MS HARLAND 886

BW	WW	YW	Milk	M&G	YSC	REA	MARB	CHB
3.9	61	104	27	58	1.9	0.68	0.023	113

## 199 W4 407 DOMET F638

DOB: 10/26/2018 Cow 44114205 Tattoo: F638

HH ADVANCE 2125Z {DLF,HYF,IEF}  
**FS ADVANCE 407B {DLF,HYF,IEF}**  
 43466166 CL 1 DOMINETTE 057X {DLF,HYF,IEF}

MCR L91 MARK DOMINO 522 ET  
**W4 522 DOMET W683**  
 43119644 H LADY DOMINO 6048

BW	WW	YW	Milk	M&G	YSC	REA	MARB	CHB
3	47	76	23	47	0.9	0.2	-0.022	92

## 196 W4 392A DOMET F621

DOB: 10/15/2018 Cow 44114202 Tattoo: F621

CL 1 DOMINO 0141 1ET {SOD}{CHB}{DLF,HYF,IEF}  
**DH DOMINO 392A {DLF,HYF,IEF,MSUDF}**  
 43459361 DH MISS ADVANCE 9156 {DLF,HYF,IEF,MSUDF}

HH ADVANCE 8203U ET {SOD}{DLF,IEF}  
**W4 8203 DOMET A041**  
 43513583 AMH MISS 2998 281 {DLF,IEF}

BW	WW	YW	Milk	M&G	YSC	REA	MARB	CHB
5.2	58	97	28	57	1	0.39	0.023	102

## 200 W4 0387 DOMET F647

DOB: 10/18/2018 Cow 44114206 Tattoo: F647

UPS DOMINO 5216 {SOD}{DLF,IEF}  
**DB 5216 DOM 0387 {DLF,HYF,IEF,MSUDF}**  
 43146486 DB MISS DOM 6005

W4 RENO DOMINO 9526 ET 3  
**W4 9526 DOMET Z656**  
 43491590 W4 188 DOMET U546

BW	WW	YW	Milk	M&G	YSC	REA	MARB	CHB
4.5	53	86	23	49	1.1	0.4	0.003	95

## 197 W4 310 LADY RIBEYE F631

DOB: 10/27/2018 Cow 44114203 Tattoo: F631

NJW 98S R117 RIBEYE 88X ET {SOD}{DLF,HYF,IEF,MSUDF}  
**BAR-S-SOF MR 88X 310 {DLF,HYF,IEF}**  
 43396221 BHF MISS KOOTER 602 {DLF,HYF,IEF}

HH ADVANCE 8203U ET {SOD}{DLF,IEF}  
**W4 8203 DOMET Y603**  
 43314121 W4 MVP DOMETE P103

BW	WW	YW	Milk	M&G	YSC	REA	MARB	CHB
5	56	82	27	55	0.8	0.44	-0.007	109

## 201 W4 548C TOP LADY F672

DOB: 11/12/2018 Cow 44114207 Tattoo: F672

H/TSR/CHEZ/FULL THROTTLE ET {DLF,HYF,IEF}  
**CHURCHILL TOP SPEED 548C ET {DLF,HYF,IEF,MSUDF}**  
 43586918 CHURCHILL LADY 002X ET {DLF,HYF,IEF,MSUDF}

FS ADVANCE 1120Y {DLF,HYF,IEF}  
**W4 1120 DOMET B016**  
 43605004 W4 6224 DOMET Y544

BW	WW	YW	Milk	M&G	YSC	REA	MARB	CHB
2.9	53	86	22	49	0.7	0.44	0.008	107

## 198 W4 407 DOMET F636

DOB: 10/27/2018 Cow 44114204 Tattoo: F636

HH ADVANCE 2125Z {DLF,HYF,IEF}  
**FS ADVANCE 407B {DLF,HYF,IEF}**  
 43466166 CL 1 DOMINETTE 057X {DLF,HYF,IEF}

W4 S109 ADVANCE 502Y ET {DLF,HYF,IEF}  
**W4 502 DOMET B567**  
 43597504 CHURCHILL LADY 068X {DLF,HYF,IEF}

BW	WW	YW	Milk	M&G	YSC	REA	MARB	CHB
3.3	48	79	26	50	0.9	0.21	-0.022	96

## 202 W4 392A L1 DOMET F678

DOB: 11/08/2018 Cow 44114208 Tattoo: F678

CL 1 DOMINO 0141 1ET {SOD}{CHB}{DLF,HYF,IEF}  
**DH DOMINO 392A {DLF,HYF,IEF,MSUDF}**  
 43459361 DH MISS ADVANCE 9156 {DLF,HYF,IEF,MSUDF}

HH ADVANCE 2037Z ET {DLF,HYF,IEF}  
**FS MISS ADVANCE 402B {DLF,HYF,IEF}**  
 43549992 CL 1 DOMINETTE 203Z {DLF,HYF,IEF}

BW	WW	YW	Milk	M&G	YSC	REA	MARB	CHB
3.9	56	99	30	59	0.7	0.37	0.038	99

**203 W4 4312 BAILEE DOM F696**

DOB: 11/15/2018 Cow 44114209 Tattoo: F696

C MILES MCKEE 2103 ET {CHB}{DLF,HYF,IEF,MSUDF}  
**C BAILEES MILES 4312 ET {DLF,HYF,IEF,MSUDF}**  
 43487323 BR BAILEE 1066 ET {DLF,HYF,IEF}

CHURCHILL RANCHER 592R {SOD}{DLF,IEF}  
**W4 592 DOMET Y557**  
 43314076 B LADY OXLEY 662

BW	WW	YW	Milk	M&G	YSC	REA	MARB	CHB
5.1	64	104	29	61	1	0.51	-0.002	111

**204 W4 193 DOMET F700**

DOB: 11/10/2018 Cow 44114210 Tattoo: F700

CL 1 DOMINO 993W {SOD}{DLF,HYF,IEF}  
**CL 1 DOMINO 193Y 1ET {DLF,HYF,IEF}**  
 43216165 CL 1 DOMINETTE 6159S {DOD}{DLF,HYF,IEF}

HH ADVANCE 8203U ET {SOD}{DLF,IEF}  
**W4 8203 DOMET A503**  
 43517256 L STAR MISS ADVANCE 406 S058

BW	WW	YW	Milk	M&G	YSC	REA	MARB	CHB
3.7	44	69	26	48	0.9	0.17	-0.002	98







**205 W4 548C TOP DOMET E533**  
 DOB: 09/25/2017 Cow 44059902 Tattoo: E533

H/TSR/CHEZ/FULL THROTTLE ET {DLF,HYF,IEF}  
**CHURCHILL TOP SPEED 548C ET {DLF,HYF,IEF,MSUDF}**  
 43586918 CHURCHILL LADY 002X ET {DLF,HYF,IEF,MSUDF}

CL 1 DOMINO 7110T {DLF,HYF,IEF}  
**DH L1 DOMINETTE 441**  
 43485125 DH L1 DOMINETTE 952

BW	WW	YW	Milk	M&G	YSC	REA	MARB	CHB
2.3	53	87	20	46	0.8	0.36	0.023	102

Brangus sired steer calf born 3/2/20.

**207 W4 136Y DOMET E576**  
 DOB: 10/01/2017 Cow 44059890 Tattoo: E576

CL 1 DOMINO 955W {SOD}{CHB}{DLF,HYF,IEF}  
**W4 955 DOMINO 136Y 2ET {DLF,HYF,IEF,MSUDF}**  
 43212032 C MS PURE GOLD 5007 ET {DLF,HYF,IEF}

HH ADVANCE 7110T ET {DLF,HYF,IEF}  
**EL MISS ADVANCE 017X**  
 43068415 EL MISS ADVANCE 449R

BW	WW	YW	Milk	M&G	YSC	REA	MARB	CHB
2.5	45	70	24	46	0.9	0.37	0.023	109

Brangus sired heifer calf born 3/10/20.

**206 W4 338 DOMET E561**  
 DOB: 09/24/2017 Cow 44059881 Tattoo: E561

CL 1 DOMINO 105Y {SOD}{DLF,HYF,IEF}  
**CL 1 DOMINO 338A {DLF,HYF,IEF}**  
 43379685 CL 1 DOMINETTE 1146Y {DLF,HYF,IEF}

CL 1 DOMINO 052X 1ET {DLF,HYF,IEF}  
**B DOMINETTE 450B**  
 43620899 B LADY RIBSTONE 150Y

BW	WW	YW	Milk	M&G	YSC	REA	MARB	CHB
2.6	47	75	35	58	1.2	0.46	0.003	110

Brangus sired heifer calf born 2/19/20.

**208 W4 166Y DOMINETTE E606**  
 DOB: 10/14/2017 Cow 44059876 Tattoo: E606

HH ADVANCE 8203U ET {SOD}{DLF,HYF,IEF}  
**CHURCHILL DOMINO 166Y {DLF,HYF,IEF,MSUDF}**  
 43187895 CHURCHILL LADY 943W {DLF,HYF,IEF}

HH ADVANCE 1006Y ET {DLF,HYF,IEF}  
**DH L1 DOMINETTE 415**  
 43484741 DH L1 DOMINETTE 030

BW	WW	YW	Milk	M&G	YSC	REA	MARB	CHB
4.5	56	83	25	53	1	0.24	0.013	93

Brangus sired heifer calf born 2/2/20.

## 209 W4 0387 ROXY DOMET E632

DOB: 10/24/2017 Cow 44059886 Tattoo: E632

UPS DOMINO 5216 {SOD}{DLF,IEF}  
**DB 5216 DOM 0387 {DLF,HYF,IEF,MSUDF}**  
 43146486 DB MISS DOM 6005

RCR L1 PAT DOMINO 02062 {DLF,IEF}  
**B ROXANNE 743T**  
 42910077 B SANDYANN 4028

BW	WW	YW	Milk	M&G	YSC	REA	MARB	CHB
5.4	59	100	21	51	1.2	0.36	0.003	91

Brangus sired heifer calf born 1/24/20.

## 213 W4 4312 BAILEE E771

DOB: 12/07/2017 Cow 44059901 Tattoo: E771

C MILES MCKEE 2103 ET {CHB}{DLF,HYF,IEF,MSUDF}  
**C BAILEES MILES 4312 ET {DLF,HYF,IEF,MSUDF}**  
 43487323 BR BAILEE 1066 ET {DLF,HYF,IEF}

HH ADVANCE 616F  
**JAB MISS ADVANCE 941J**  
 41143262 JAB 185 DOMINETE 532

BW	WW	YW	Milk	M&G	YSC	REA	MARB	CHB
4.8	57	91	26	55	0.8	0.36	-0.017	102

Brangus sired steer calf born 2/18/20.

## 210 W4 338 DOMET E667

DOB: 11/02/2017 Cow 44059892 Tattoo: E667

CL 1 DOMINO 105Y {SOD}{DLF,HYF,IEF}  
**CL 1 DOMINO 338A {DLF,HYF,IEF}**  
 43379685 CL 1 DOMINETTE 1146Y {DLF,HYF,IEF}

CL 1 DOMINO 072X {DLF,HYF,IEF}  
**B 72X DOMINETTE 476B**  
 43620916 B MISTY ROBIN 111Y

BW	WW	YW	Milk	M&G	YSC	REA	MARB	CHB
3.2	55	83	37	64	1.4	0.48	0.003	109

Brangus sired heifer calf born 2/2/20.

## 214 W4 A311 DOMET E815

DOB: 12/28/2017 Cow 44059923 Tattoo: E815

CL 1 DOMINO 860U {SOD}{DLF,HYF,IEF}  
**W4 860 DOMINO A311 {DLF,HYF,IEF,MSUDF}**  
 43728065 C 552 MISS DOM 5011

C RENO 6142 ET {DLF,IEF}  
**W4 RENO DOMET 9519 ET 2**  
 43074647 GKB MISS PURE GOLD B518 ET {DLF,IEF}

BW	WW	YW	Milk	M&G	YSC	REA	MARB	CHB
4.1	48	80	22	46	0.5	0.33	-0.037	100

Brangus sired heifer calf born 2/15/20.

## 211 W4 4312 BAILEE E765

DOB: 12/07/2017 Cow 44059889 Tattoo: E765

C MILES MCKEE 2103 ET {CHB}{DLF,HYF,IEF,MSUDF}  
**C BAILEES MILES 4312 ET {DLF,HYF,IEF,MSUDF}**  
 43487323 BR BAILEE 1066 ET {DLF,HYF,IEF}

GH ADAMS NORTHERN YANK ET 230U  
**B MISTY ROBIN 181Y**  
 43202410 B ROXANNE 877

BW	WW	YW	Milk	M&G	YSC	REA	MARB	CHB
5.5	58	90	29	58	0.9	0.49	-0.027	113

Brangus sired steer calf born 2/17/20.

## 215 W4 392A COWGIRL D515

DOB: 09/30/2016 Cow 43945651 Tattoo: D515

CL 1 DOMINO 0141 1ET {SOD}{CHB}{DLF,HYF,IEF}  
**DH DOMINO 392A {DLF,HYF,IEF,MSUDF}**  
 43459361 DH MISS ADVANCE 9156 {DLF,HYF,IEF,MSUDF}

CJH COWBOY 512 {DLF,IEF}  
**C COWGIRL 7073**  
 42787066 C 026 MISS ADV 2049

BW	WW	YW	Milk	M&G	YSC	REA	MARB	CHB
3.8	52	93	30	56	0.9	0.42	0.013	106

Sells bred to Registered Hereford, FS Advance 407B to calve by sale time.

## 212 W4 3001 ADVANCE DOMET E768

DOB: 12/07/2017 Cow 44059922 Tattoo: E768

HH ADVANCE 0002X {SOD}{DLF,HYF,IEF,MSUDF}  
**FS ADVANCE 3001A ET {DLF,HYF,IEF}**  
 43418093 EL MISS ADVANCE 710T {DLF,HYF,IEF}

CHURCHILL MVP 188 {SOD}{CHB}{DLF,HYF,IEF}  
**W\$ 188 DOMET S588**  
 42820340 K74 833 DOMET 1126

BW	WW	YW	Milk	M&G	YSC	REA	MARB	CHB
2.9	53	81	25	52	0.9	0.29	0.003	103

Sells bred to Brangus bull to calve by sale time.

## 216 W4 0387 SARA KAY D517

DOB: 12/04/2016 Cow 44058469 Tattoo: D517

UPS DOMINO 5216 {SOD}{DLF,IEF}  
**DB 5216 DOM 0387 {DLF,HYF,IEF,MSUDF}**  
 43146486 DB MISS DOM 6005

GKB DOWNTOWN B627 ET {DLF,HYF,IEF}  
**GKB S&S B627 SARA KAY B926 ET**  
 42982294 C IDA KAY GOLD 5006 ET {DLF,HYF,IEF}

BW	WW	YW	Milk	M&G	YSC	REA	MARB	CHB
4.5	50	84	26	51	1	0.45	-0.007	99

Bull calf born 2/15/20, sired by Registered Hereford, FS Advance 407B.



**217 W4 0387 DOMET D539**  
 DOB: 10/14/2016 Cow 43946271 Tattoo: D539

UPS DOMINO 5216 {SOD}{DLF,IEF}  
**DB 5216 DOM 0387 {DLF,HYF,IEF,MSUDF}**  
 43146486 DB MISS DOM 6005

BR LANSING 3056  
**BR 56 ROSEMARY 5126**  
 42661493 BR 74 RACHEL 3143

BW	WW	YW	Milk	M&G	YSC	REA	MARB	CHB
3.8	49	76	22	46	1	0.36	0.003	89

Heifer calf born 3-17-20, sired by Registered Hereford, FS Advance 407B.

**221 W4 338A DOMET D594**  
 DOB: 11/20/2016 Cow 43947668 Tattoo: D594

CL 1 DOMINO 105Y {SOD}{DLF,HYF,IEF}  
**CL 1 DOMINO 338A {DLF,HYF,IEF}**  
 43379685 CL 1 DOMINETTE 1146Y {DLF,HYF,IEF}

JA L1 DOMINO 1000Y {DLF,HYF,IEF}  
**DH L1 DOMINETTE 4112**  
 43528858 DH L1 DOMINETTE 801

BW	WW	YW	Milk	M&G	YSC	REA	MARB	CHB
3.2	52	84	33	59	1.2	0.4	0.003	107

Sells bred to Registered Hereford, FS Advance 407B to calve by sale time.

**218 W4 102Y MS RANCHER D566**  
 DOB: 10/14/2016 Cow 43945699 Tattoo: D566

CHURCHILL RANCHER 592R {SOD}{DLF,IEF}  
**W4 592 DOMINO 102Y ET {DLF,HYF,IEF,MSUDF}**  
 43212083 BR 74 ALAINNA 3113

CHURCHILL RANCHER 592R {SOD}{DLF,IEF}  
**W4 592 DOMET Y612**  
 43314023 W4 MVP N476

BW	WW	YW	Milk	M&G	YSC	REA	MARB	CHB
5.4	57	90	24	52	0.7	0.29	0.053	97

Sells bred to Registered Hereford, FS Advance 407B to calve by sale time.

**222 W4 1120Y MS ADVANCE D617**  
 DOB: 10/26/2016 Cow 43946249 Tattoo: D617

-S ADVANCE DOM 0023K U182  
**FS ADVANCE 1120Y {DLF,HYF,IEF}**  
 43207686 HH MISS ADVANCE 8063U ET {DLF,HYF,IEF}

HH ADVANCE 2136M  
**-S MISS ADVANCE DOM 3037 S81**  
 42735861 XP L1 DOMINETTE 03037

BW	WW	YW	Milk	M&G	YSC	REA	MARB	CHB
2.6	40	66	19	39	0.4	0.05	0.033	87

Bull calf born 3/1/20, sired by Registered Hereford, FS Advance 407B.

**219 W4 502Y MS ADVANCE D580**  
 DOB: 10/26/2016 Cow 43946275 Tattoo: D580

GO 3196 ADVANCE S109 {SOD}{DLF,HYF,IEF}  
**W4 S109 ADVANCE 502Y ET {DLF,HYF,IEF}**  
 43412411 AMH MISS 2998 281 {DLF,IEF}

HH ADVANCE 041K 1ET {DLF,IEC}  
**W4 041 DOMINETE R056**  
 42727435 K74 7049 DOMET 9137

BW	WW	YW	Milk	M&G	YSC	REA	MARB	CHB
3.7	47	72	18	41	0.4	0.26	-0.007	95

Sells bred to Registered Hereford, FS Advance 407B to calve by sale time.

**223 W4 1120Y MS ADVANCE D654**  
 DOB: 12/06/2016 Cow 43946220 Tattoo: D654

-S ADVANCE DOM 0023K U182  
**FS ADVANCE 1120Y {DLF,HYF,IEF}**  
 43207686 HH MISS ADVANCE 8063U ET {DLF,HYF,IEF}

RCR 804 DOMINO 2025 {SOD}{DLF,IEF}  
**H LADY DOMINO 6073**  
 42712967 H MISS MARK 774

BW	WW	YW	Milk	M&G	YSC	REA	MARB	CHB
4.8	48	76	20	44	0.6	0.32	0.023	98

Brahman sired steer calf born 2/1/20.

**220 W4 1120Y MS ADVANCE D587**  
 DOB: 12/06/2016 Cow 43946244 Tattoo: D587

-S ADVANCE DOM 0023K U182  
**FS ADVANCE 1120Y {DLF,HYF,IEF}**  
 43207686 HH MISS ADVANCE 8063U ET {DLF,HYF,IEF}

C 212 DOMINO 4011 ET {SOD}{CHB}{DLF,HYF,IEF}  
**W4 4011 DOMET T122**  
 42841288 W4 8055 DOMET P178

BW	WW	YW	Milk	M&G	YSC	REA	MARB	CHB
3.5	51	82	20	45	0.6	0.32	0.013	97

Sells bred to Registered Hereford, FS Advance 407B to calve by sale time.

**224 W4 136Y DOMET E065**  
 DOB: 03/14/2017 Cow 43986739 Tattoo: E065

CL 1 DOMINO 955W {SOD}{CHB}{DLF,HYF,IEF}  
**W4 955 DOMINO 136Y 2ET {DLF,HYF,IEF,MSUDF}**  
 43212032 C MS PURE GOLD 5007 ET {DLF,HYF,IEF}

C GAME DAY 3087 {CHB}{DLF,HYF,IEF}  
**W4 3087 DOMET S623**  
 42820801 RCR L1 DOMINET 99029

BW	WW	YW	Milk	M&G	YSC	REA	MARB	CHB
3.7	47	75	24	47	0.6	0.41	0.003	108

Sells bred to Registered Hereford, FS Advance 407B to calve by sale time.

**Take advantage of hybrid vigor by capitalizing on Hereford genetics.**



The Maternal Advantage program generates females with added longevity, more docility, increased fertility and more profit per year.

Can be utilized by producers using Hereford bulls on British-based cows or Brahman-based cows in their breeding program.

Producers utilizing the program will have access to a sire EPD summary, added market exposure, replacement selection tools, genetic improvement tools and access to AHA resources, marketing and staff.

## Qualifications

- Producers must verify that eligible females are sired by registered Hereford bulls with transferred ownership.
- Participating bull batteries must rank in the top 50% of the breed for Baldy Maternal Index (BMI\$) if used on British-based cows or the top 50% of the breed for Brahman Influence Index (BII\$) if used on Brahman-based cows.











**For news about the ranch, our cattle and events  
we participate in throughout the year, visit**

**[www.w4ranch.com](http://www.w4ranch.com)**



# JOHNSON

CATTLE MARKETING

Tom Johnson  
440 FM 246  
Wortham, TX 76693  
903/599-2403

FIRST CLASS MAIL  
U.S. POSTAGE  
PAID  
WORTHAM, TX  
PERMIT NO. 8



Lot 19



Lot 1



Lot 71



# RANCH

EST. 1961