

# PIXMA MX366

Office All-In-One

**Canon**

Delighting You Always



SUPPORTING YOUR BUSINESS



**PIXMA**

# IN SUPPORT OF YOUR SUCCESS



## The PIXMA MX366

The PIXMA MX366 is a remarkably affordable All-in-One, yet its performance is nothing short of professional. Impressive speeds, exceptional quality and economical operation are the hallmarks of this user-friendly machine, making it the perfect addition to any success-minded office. The PIXMA MX366 – supporting your business in every way.



**Print Resolution**  
4800dpi (max.) 2pl Ink Droplets (min.)



**ADF Copy Speed** 3.4ipm  
Color  
Measured by ISO / IEC 24735 Standard



**Document Printing**  
8.4ipm 4.8ipm  
Mono Color  
Measured by ISO / IEC 24734 Standard



**Super G3  
Fax Technology**



**Photo Printing**  
4x6" borderless in 43sec.



**Scan Resolution**  
1200x2400dpi

## The Only Way To Know The True Speed Of A Printer

### ISO Print/Copy Standards

To compare the true performance of inkjet printers across different vendors, a universal standard of print speed measurement is essential. Canon uses the universal ISO/IEC 24734, ISO/IEC 24735, and ISO/IEC 29183 Print/Copy Measurement standards to ensure that you always get the performance you expect, right out of the box. So before you buy any inkjet printer, demand to know the ISO speed standards.



**Scan to Memory**



**PictBridge**



## Precise Color, Professional Text

### Four-Color FINE™ Cartridge Hybrid Ink System

Both pigment- and dye-based inks are used to ensure brilliant images and razor-sharp text even when characters are printed over an image.



## Advanced Copy Functions

### Fully Integrated 30-sheet ADF

Load up to 30 documents into the ADF and speed through a series of originals you need to copy.

### Frame Erase

Saves black ink by removing unsightly black borders that show up on copies made from thick books and document stacks.

## All It Takes Is A Touch

### Auto Scan Mode

Automatically recognizes the document type and then makes the optimal scan and file-format save settings – as well as precise image categorization – all at the touch of a button.



| Standard Scan Steps           | Auto Scan Mode Scan Steps   |
|-------------------------------|---|
| Set Original                  | Set Original  |
| Select the Type of Original   | <b>Click Scan Button</b><br>Automatically recognizes the type of originals, scans and saves with suitable settings. |
| Preview                       |   |
| Set Resolution                |   |
| Crop                          |   |
| Set Suitable Image Processing |   |
| Scan                          |   |
| Save                          |   |



Without Frame Erase



With Frame Erase

## Fast & Efficient

### ADF Scanning

Scan up to 30 documents at once. Just load them into the ADF and hit the scan button.



## Expanded Scanning Capabilities – MP Navigator EX

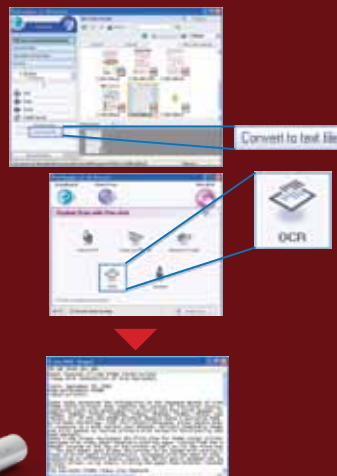
### Classifying And Viewing Images In Categories

Improves file organization by automatically placing scanned and imported images into categories (works with Auto Scan Mode).



### OCR Text Data Conversion

Scans and extracts text characters to a .TXT text file.



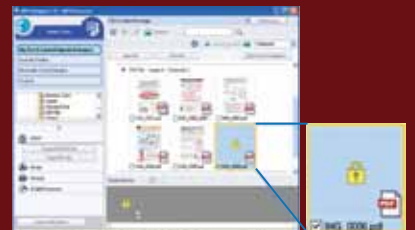
### Add Security To Scanned PDF Files (Windows only)

Assign passwords to PDF files to limit access or restrict printing; provide various levels of access by creating multiple passwords for a single file.



Checkbox enables password to limit access

MP Navigator EX UI showing the check box that enables password for limiting access to PDF files



MP Navigator EX UI showing PDF files with passwords that limit access



# Faster, More Efficient Super G3 High-Speed Faxing



## Super G3 Standard

Transmit an A4-size document in just 3 seconds with the built-in high-speed fax modem.

## Memory Reception

Store up to 50 pages of incoming faxes with the built-in fax-reception memory.

## Coded Speed Dial

Program up to 20 frequently used numbers for convenient access.

## ADF Faxing

Load up to 30 documents in the ADF for continuous, hands-free faxing.



# Advanced Fax Security Features



## Fax Number Re-Entry

Requires the sender to key in the recipient's fax number twice to prevent misdialing.

## Check RX Fax Info

If the dialed number and the recipient's registered number are not the same, the outgoing fax will not be sent.

## Caller Rejection

Allows user to stop incoming faxes based on specific parameters if the user has subscribed to a Caller ID service.

## Fax Reception Reject

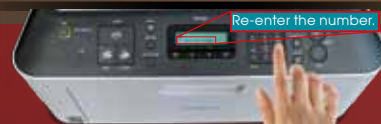
Allows user to stop incoming faxes if the sender's number is specified on a rejected numbers list.

Functions that prevent a FAX from being sent to the wrong location:

### FAX number re-entry

The sender will be asked to re-enter the recipient's number for confirmation

1st



2nd



In case the 2nd number is different from the 1st one, the FAX isn't sent

### Check RX FAX info

Checks whether the dialed number and the recipient's registered number are the same. If not, the FAX isn't sent



Won't send FAX

TTI FAX information 012345678



## Print Photos And Documents Without A Computer



### PictBridge

Connect directly to any PictBridge-compatible camera or camcorder to print brilliant, lab-quality photos.



### Bluetooth

Connect the optional BU-30 Bluetooth adapter and print photos wirelessly from a Bluetooth-enabled camera phone or PDA.



## Easy-PhotoPrint EX

### Import Photos Directly From Flickr®

Choose from hundreds of thousands of high-quality Flickr® images to decorate photo albums, calendars, travel journals and stickers.



\*It is unlawful to reproduce or edit the copyrighted work of another person without permission from the copyright holder, except for personal use, use within the home, or other use within the limited scope as defined by the copyright. Additionally, reproducing or editing photographs of people may infringe on portrait rights.

## Print Stills From Your Movie



Full HD Movie Print

### Full HD Movie Print

Capture and print individual frames of HD movies you shoot with a Canon digital camera. Before printing, images can be even be corrected to enhance resolution and to reduce image noise.



\*Only for ".mov" files created by Canon digital cameras. Requires Canon ZoomBrowser EX 6.5 or later, or Canon ImageBrowser 6.5 or later.



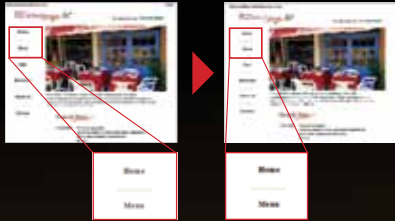
# Enhanced Easy-WebPrint EX



Easy-WebPrint EX

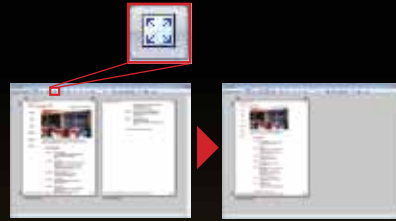
## Gray-To-Black Legibility

Enhance the legibility of gray text on web pages by printing it in crisp, easy-to-read black.



## Single Click Fit-To-Page

With one click, enlarge or reduce the size of clipped web content so that it fits onto a single sheet of paper.



## Clip & Merge

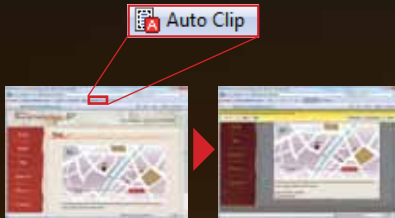
Save time, space and paper by clipping, editing, resizing and printing only what you want from web pages.

You can even insert images stored on your PC and rearrange the layout before printing.



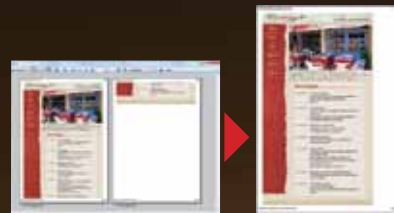
## Auto Clipping

With one click, clip the main part of the web page for printing.



## Save Paper

Paper-saving features include reduced fit-to-page layout and save to PDF options.



# Easy Access

## Solution Menu EX

Enjoy easy access to a range of photo printing, scanning and web-based solutions with this unique launcher application. When not in use, it can be minimized to a corner of the desktop.



# Automatic Photo Optimization



Auto Photo Fix II  
(Easy-Photo Print EX)

## Auto Photo Fix II (via Easy-Photo Print EX)

Before printing, images are analyzed with a unique multi-zone exposure correction technology to correct and enhance skin tones, brightness, contrast, and even the color cast.



Original



Corrected color cast

## Photo Printing



**PT-201**  
Photo Paper Pro  
Platinum  
(Super High  
Gloss)

- 300g/m<sup>2</sup>
- 4x6", 8x10", A4



**PP-201**  
Photo Paper  
Plus Glossy II

- 260g/m<sup>2</sup>
- 4x6", A4



**GP-501**  
Glossy Photo  
Paper

- 170g/m<sup>2</sup>
- 4x6", A4



**SG-201**  
Photo Paper  
Plus Semi-Gloss

- 270g/m<sup>2</sup>
- 4x6", 8x10", A4

## Special Projects



**MP-101**  
Matte Photo  
Paper

- 170g/m<sup>2</sup>
- 4x6", A4



**PS-101**  
Photo Stickers

- 190g/m<sup>2</sup>
- Stickers  
(5 sheets/pack)  
(16 photo  
stickers/sheet)

## Business Printing



**HR-101N**  
High Resolution  
Paper

- 110g/m<sup>2</sup>
- A4

## Ink Cartridges

**PG-810**  
810  
Black



**CL-811**  
811  
Color



### Optional

**PG-810XL**  
810XL  
Black

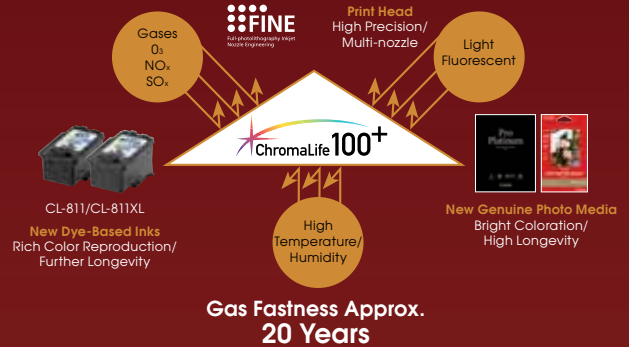


**CL-811XL**  
811XL  
Color



# Memories For More Than A Lifetime – ChromaLife100+

Canon's dye-based inks and genuine photo papers work synergistically to create brilliant, fade-resistant prints. Under proper storage conditions, your photos can last up to 300 years.\*



No noticeable color change

\*Under proper storage conditions. See specifications for details.

# CREATIVE PARK

[www.canon.com/c-park](http://www.canon.com/c-park)

**FREE  
DOWNLOADS!**

### 3D PAPER CRAFT

Have fun creating paper castles, dinosaurs, fish, & other exciting objects.



### CALENDARS

Make personalized calendars; decorate with photos and creative designs.



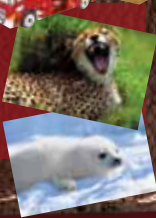
### GIFT & CARD

Create stationery, envelopes & cards for holidays, birthdays or any occasion.



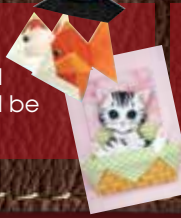
### PHOTO GALLERY

Add excitement to creative projects by downloading free professional photos.



### PAPER ART

Make origami, 3D decoupages, and paper-reliefs you'll be proud to display.



# PIXMA MX366 Specifications

| PRINT                             |  |   |
|-----------------------------------|--|---|
| Maximum Printing Resolution       |  | 4800 (horizontal)*1 x 1200 (vertical) dpi                       |
| Print Head/Ink                    | Type/Ink System                            | FINE Cartridge  |
|                                   | Total Number of Nozzles                    | 1,472 nozzles   |
|                                   | Min. Ink Droplet Size                      | 2pl   |
|                                   | Ink Tank                                   | PG-810, CL-811 (PG-810XL, CL-811XL Optional)                    |
| Print Speed                       | Document: Color*2                          | ESAT/Simplex approx. 4.8ipm                                     |
|                                   | Document: B/W*2                            | ESAT/Simplex approx. 8.4ipm                                     |
|                                   | Photo (4x6)*2                              | PP-201/Standard/Borderless approx. 43sec.                       |
| Printable Width                   |  | Up to 203.2mm (8-inch), Borderless: Up to 216mm (8.5-inch)      |
| Recommended Printing Area         |  | Top margin: 31.2mm / Bottom margin: 32.5mm                      |
| Paper Size*3                      |  | A4, A5, B5, LTR, LGL, 4x6", 5x7", 8x10", Envelopes (DL, COM10)  |
| SCAN                              |  |   |
| Scanner Type                      |  | Flatbed & ADF   |
| Scanning Method                   |  | CIS   |
| Optical Resolution*4              |  | 1200 x 2400dpi  |
| Selectable Resolution             |  | 25 - 19200dpi   |
| Scanning Bit Depth (Input/Output) | Grayscale                                  | 16bit/8bit  |
|                                   | Color                                      | 48bit/24bit (RGB each 16bit/8bit)                               |
| Line Scanning Speed*5             | Grayscale                                  | 1.6 ms/lines (300dpi)   |
|                                   | Color                                      | 4.8 ms/lines (300dpi)   |
| Scanning Speed*6                  | Reflective                                 | A4 Color/300dpi approx. 19sec.                                  |
| Maximum Document Size             | Flatbed                                    | A4, LTR (216x297mm)   |
|                                   | ADF  | A4, LTR, LGL  |
| COPY                              |  |   |
| Image Quality                     |  | 3 positions (Fast, Standard, High)                              |
| Density Adjustment                |  | 9 positions, Auto intensity (AE copy)<br>*Not supported for ADF |
| Copy Speed*7                      | Document: Color                            | sFCOT/Simplex approx. 29sec.                                    |
|                                   | Document: Color                            | sESAT/Simplex approx. 4.0ipm                                    |
|                                   | Document (ADF): Color                      | ESAT/Simplex approx. 3.4ipm                                     |
| Multiple Copy                     | Black/Color                                | max. 99 pages   |
| FAX                               |  |   |
| Type                              |  | Desktop Transceiver (Super G3/Color Communication)              |
| Applicable Line                   |  | PSTN (Public Switched Telephone Network)                        |
| Transmission Speed*8              | Black                                      | approx. 3sec. (33.6kbps)  |
|                                   | Color                                      | approx. 1min. (33.6kbps)  |
| Fax Resolution                    | Black                                      | 8pels/mm x 3.85lines/mm (Standard)                              |
|                                   |  | 8pels/mm x 7.7lines/mm (Fine)                                   |
|                                   | Color                                      | 300 x 300dpi (Extra Fine)                                       |
|                                   |  | 200 x 200dpi  |
| Print Size                        |  | A4, LTR, LGL  |
| Scanning Width                    |  | 208mm (A4), 214mm (LTR)   |
| Modem Speed                       |  | maximum 33.6kbps (Automatic fall back)                          |
| Compression                       | Black                                      | MH, MR, MMR   |
|                                   | Color                                      | JPEG  |
| Gradation                         | Black                                      | 256 levels  |
|                                   | Color                                      | 24bit Full color (RGB each 8bit)                                |
| ECM (Error Correction Mode)       |  | ITU-T T.30 compatible   |
| Automatic Dialing                 | Coded Speed Dialing                        | max. 20 locations   |
|                                   | Group Dialing                              | max. 19 locations   |
| Transmission/Reception Memory*9   |  | approx. 50 pages  |
| PC-FAX                            |  |   |
| Type                              |  | Windows: via FAX modem(in MFP), Mac: NA                         |
| Destination Number                |  | 1 location  |
| Black/Color                       |  | B/W transmission only   |
| PAPER HANDLING                    |  |   |
| Rear Tray (Maximum Number)        | Plain Paper                                | A4, A5, B5, LTR=100, LGL=10                                     |
|                                   | High Resolution Paper (HR-101N)            | A4=80   |
|                                   | Photo Paper Pro Platinum (PT-101)          | 4x6"=20; A4, 8x10"=10   |
|                                   | Photo Paper Plus Glossy II (PP-201)        | 4x6"=20; A4=10  |
|                                   | Photo Paper Plus Semi-gloss (SG-201)       | 4x6"=20; A4=10  |
|                                   | Glossy Photo Paper "Everyday Use" (GP-501) | 4x6"=20; A4=10  |
|                                   | Matte Photo Paper (MP-101)                 | 4x6"=20; A4=10  |
|                                   | Photo Stickers (PS-101)                    | 1   |
|                                   | T-Shirt Transfer (TR-301)                  | 1   |
|                                   | Envelope                                   | European DL, US Com. #10=10                                     |
| Auto Document Feeder (ADF)        | Paper Handling (Plain Paper)               | A4, LTR=30; LGL=5   |



| PAPER WEIGHT                   |   |   |
|--------------------------------|---|---|
| Rear Tray                      |   | Plain Paper: 64-105 g/m <sup>2</sup> , Canon specialty paper: max paper weight: approx. 300g/m <sup>2</sup> (Photo Paper Pro Platinum PT-101) |
| SYSTEM REQUIREMENTS            |   |   |
| Windows                        | (Please visit <a href="http://www.canon-asia.com">www.canon-asia.com</a> to check OS compatibility and to download the latest driver updates) | Windows XP, Windows Vista, Windows 7  |
| Macintosh                      |   | Macintosh OS X 10.4.11 - 10.6   |
| DIRECT SPECIFICATIONS          |   |   |
| PictBridge                     | Compatible Digital Camera   | "PictBridge" compliant digital cameras, camcorders and camera phones  |
|                                | File Formats  | JPEG (Exif ver2.2/2.21/2.3 compliant)**10   |
| Scan to Memory                 | Compatible Media  | USB Flash Memory (documents only)   |
| GENERAL                        |   |   |
| Quick Start                    |   | approx. 4sec.   |
| Operation Panel                | Display   | Full dot LCD  |
| Interface                      |   | USB 2.0 Hi-Speed, PictBridge, Bluetooth v2.0 (Option); Maximum Speed 1.44Mbps (JPEG, PNG only, OPP, BIP)                                      |
| Self-Opening Paper Output Tray |   | Available   |
| Operating Environment          |   | Temperature: 5 - 35°C, Humidity: 10 - 90% RH (no dew condensation)  |
| Storage Environment            |   | Temperature: 0 - 40°C, Humidity: 5 - 95% RH (no dew condensation)   |
| Acoustic Noise (PC Print)**11  |   | approx. 45.7dB(A)   |
| Power                          |   | AC100 - 240V, 50/60Hz   |
| Power Consumption              | Standby (scanning lamp is off) (USB connection to PC)   | approx. 2.0W  |
|                                | OFF (USB connection to PC)  | approx. 0.3W  |
|                                | Copying**12   | approx. 11W   |
| Environment                    | Regulation  | RoHS (EU, China), WEEE (EU)   |
|                                | Eco-Label   | Energy Star   |
| Duty Cycle                     |   | Up to 3,000 pages/month   |
| Dimension (WxDxH)              |   | approx. 458 x 415 x 198mm   |
| Weight                         |   | approx. 8.5kg   |

Specifications are subject to change without notice.

- \*1 Ink droplets can be placed with a pitch of 1/4800 inch at minimum.
- \*2 Document print speeds are the averages of ESAT in Office Category Test for the default mode, ISO/IEC 24734, excluding time to print the first set.  
Photo print speed is based on the default setting using ISO/JIS-SCID N2 on Photo Paper Plus Glossy II and does not take into account data processing time on host computer.  
Print speed may vary depending on system configuration, interface, software, document complexity, print mode, page coverage, type of paper used, etc.
- \*3 The paper sizes that can be fed from the cassette are A4, A5, B5, LTR size.
- \*4 Optical resolution is a measure of maximum hardware sampling resolution, based on ISO 14473 standard.
- \*5 The fastest speed in Hi-Speed USB on Windows PC. Transfer time to computer is not included.
- \*6 Color document scan speed is measured with ISO/IEC 24735 Annex C Test Chart A.  
Scan speed indicates the time measured between pressing the scan button of the scanner driver and the on-screen status display turning off.  
Scan speed may vary depending on system configuration, interface, software, scan mode settings and document sizes, etc.
- \*7 Copy speeds are the average of sFCOT and sESAT, ISO/IEC 29183.  
ADF copy speed is the average of ESAT in General Performance Test for the default simplex mode, ISO/IEC 24735, excluding time to copy the first set.  
Copy speed may vary depending on document complexity, copy mode, page coverage, type of paper used, etc. and does not take into account warm up time.
- \*8 Black & white document fax transmission speed is based on default setting using ITU-T No.1 chart.  
Color document fax transmission speed is based on default setting using Canon Color Fax Test Sheet.  
Actual transmission speed may vary depending on document complexity, fax settings at receiving end, and line conditions etc.
- \*9 Page count is based on ITU-T No.1 chart or Canon FAX Standard Chart No.1.
- \*10 Image data taken by DCF (Ver.1.0/2.0) - compliant digital cameras, camcorders or camera phones and recorded in JPEG (Exif-compliant) format
- \*11 When printing ISO/JIS-SCID N2 pattern on 4x6" Photo Paper Plus Glossy II using default settings.
- \*12 Copy: When copying ISO/JIS-SCID N2 (printed by inkjet printer) on A4 size plain paper using default settings.

#### \*CHROMALIFE100\* PROPER STORAGE CONDITIONS

##### 300-year life in an album:

<Criteria for estimation> The permanence presented above are made using an accelerated dark storage test designed for silver-halide photos (ISO/FD1S18909). Samples are printed with an optical density of 1.0 (each black, cyan, magenta, yellow) and kept in a controlled environment of high temperature and 50% relative humidity. The test environment is designed to accelerate color fading. The rate of the decrease in the optical density and the rate of yellow discoloration of the paper are measured. Finally, the results are extrapolated to the length of time that a printed image is kept in an environment of 23°C 50% RH.

##### 30-year lightfastness:

<Criteria for estimation> When displayed in a glass frame in a typical indoor space (estimating 500lux / 10 hours per day) without direct sunlight. Estimates for lightfastness are made under the following test conditions. Light source: White fluorescent light 70,000lux; Temperature: 24°C; Humidity: 60% RH; A 2mm thick glass is placed on the sample with an air gap between the glass and the sample during accelerated testing.

##### 20-year gas fastness:

<Criteria for estimation> Estimates for gas fastness are made under the following test conditions: Temperature (24°C) and humidity (60% RH) are controlled in an environment of mixed gases of O<sub>3</sub>, NO<sub>x</sub> and SO<sub>x</sub>. The ratio of the gases is typical to indoor air composition (O<sub>3</sub>: NO<sub>x</sub>: SO<sub>x</sub> = 3:19:1) with 100-times concentration in order to accelerate fading.

##### <Criteria for estimation of print longevity>

Estimates for image permanence are made using the Wilhelm Imaging Research, Inc. Endpoint criteria: Accumulated illuminance causes a monochromatic / reflective optical density loss of 20-35% (figures set respectively for each color, starting density of 1.0). Accumulated illuminance causes a difference in color balance of yellow, magenta and cyan (each component in composite black) of 12-18%.

##### <Tips>

Making your printed images last longer: Light, environmental gases, high temperature and humidity can accelerate color fading. When displaying your photographs, avoid high-intensity lighting and use glass-filtered frames. Photos stored in the dark, using archival quality albums or storage materials, will tend to last longer than photos that are exposed to light. Avoid high temperatures and high humidity to promote the image permanence of your photos.

Note: The image permanence estimates presented above may vary depending on display/storage conditions. The expressed numbers of years estimates are the result of simulated, accelerated tests conducted by Canon Inc., and do not represent a product guarantee.



Delighting You Always

SOUTH & SOUTHEAST ASIA REGIONAL  
HEADQUARTERS:

**CANON SINGAPORE PTE. LTD.**

1 HarbourFront Avenue #04-01 Keppel Bay Tower  
Singapore 098632  
Tel: 65-6799 8888 Fax: 65-6799 8882  
www.canon-asia.com

BANGLADESH:

**J.A.N. Associates**

Tel: 880-2-8611 444  
Fax: 880-2-8610 410

BRUNEI:

**Interhouse Company**

Tel: 673-2-653 001  
Fax: 673-2-653 003

CAMBODIA:

**i-Click (Cambodia) Pte. Ltd.**

Tel: 855-23-996 638  
Fax: 855-23-996 639

INDIA:

**Canon India Pvt. Ltd.**

Tel: 91-124-4160 000  
Fax: 91-124-4160 011  
www.canon.co.in

INDONESIA:

**P. T. Datascrip**

Tel: 62-21-2664 8999  
Fax: 62-21-6544 811-13  
www.canon.co.id

MALAYSIA:

**Canon Marketing (Malaysia) Sdn. Bhd.**

Tel: 603-7844 6000  
Fax: 603-7845 0505  
www.canon.com.my

MALDIVES:

**SIMDI**

Tel: 960-324 819  
Fax: 960-318 433

MYANMAR:

**Myanmar Golden Rock International Co. Ltd.**

Tel: 95-1-2020 92/3/4  
Fax: 95-1-202 079

NEPAL:

**International Electronics Concern (P) Ltd.**

Tel: 977-1-4421 991  
Fax: 977-1-4421 909

PAKISTAN:

**MBM International**

Tel: 92-21-3227 7093  
Fax: 92-42-3753 0948

SINGAPORE:

**Canon Singapore Pte. Ltd.**

Tel: 65-6799 8888  
Fax: 65-6221 7577  
www.canon.com.sg

SRI LANKA:

**Metropolitan Computers (Pvt.) Ltd.**

Tel: 94-11-2437 797  
Fax: 94-11-2448 980

THAILAND:

**Canon Marketing (Thailand) Co. Ltd.**

Tel: 66-2-3449 999  
Fax: 66-2-3449 967-68  
www.canon.co.th

VIETNAM:

**Canon Singapore Pte. Ltd.**

Ho Chi Minh City Representative  
Office & Showroom  
Tel: 84-8-8200 466  
Fax: 84-8-8200 477  
www.canon.com.vn

Hanoi Representative Office

Tel: 84-4-7711 677  
Fax: 84-4-7711 678  
www.canon.com.vn

Dealer's Stamp