



# SUSTAINABILITY STRATEGIC PLAN



UNIVERSITY *of*  
LOUISIANA  
L A F A Y E T T E ®

2018 - 2021



# SUSTAINABILITY STRATEGIC PLAN

2018 - 2021

Cover: University student walking down Saint Mary Boulevard.

Source: Doug Dugas, University Photographer

This plan was prepared by the Office of Sustainability, the President's Council on Sustainability, and Sustainability Strategic Plan Task Force members.



Office of Sustainability  
Rougeou Hall 343  
P.O. Box 43677, Lafayette, LA 70504  
P: 337.482.0053 | [sustainability@louisiana.edu](mailto:sustainability@louisiana.edu)  
[www.sustainability.louisiana.edu](http://www.sustainability.louisiana.edu)

---

# Sustainability is in our roots.

---

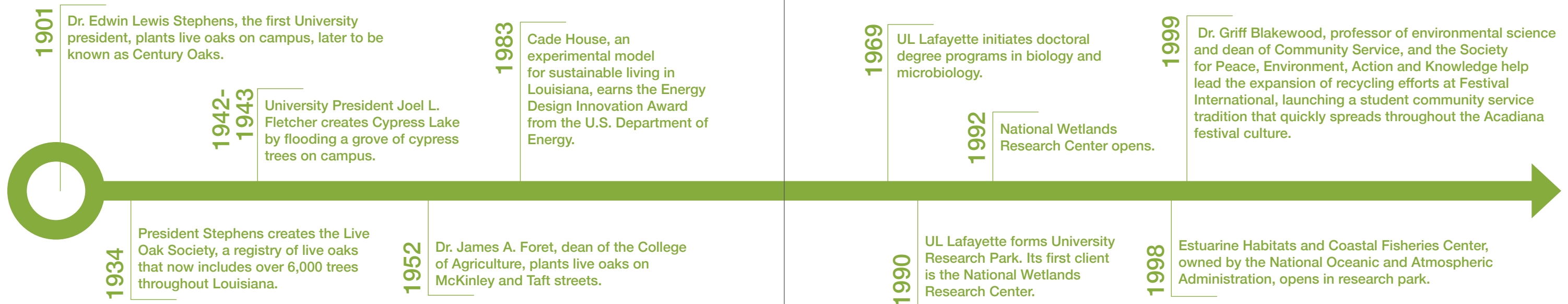
**Our vision** is for the entire University community to become more aware of our impacts on the environment and our community, at the institutional level and at our own personal level.

We fully believe that in doing so, we will all become more conscientious and responsible, and **the University will become stronger and more resilient.**



# TABLE OF CONTENTS

8	FOREWORD	
10	INTRODUCTION	
15	OVERVIEW OF OBJECTIVES	AIR & CLIMATE WATER USE & WATERSHED LANDSCAPE & HABITATS
16	STRATEGIC PLAN TIMELINE	ENERGY
18	CAMPUS AS A LIVING LAB	BUILDINGS & PLANNING MATERIALS MANAGEMENT TRANSPORTATION
20	OPERATIONS	HEALTH & WELLNESS
38	ACADEMICS AND RESEARCH	EDUCATION & PROFESSIONAL DEVELOPMENT RESEARCH
44	ENGAGEMENT	CAMPUS ENGAGEMENT COMMUNITY ENGAGEMENT COMMUNICATIONS & ASSESSMENT
52	APPENDICES	





# FOREWORD



## Letter from President Savoie:

This Sustainability Strategic Plan exemplifies what can be accomplished when individuals with passion and purpose work together at the University of Louisiana at Lafayette.

It's the result of the dedication of students, faculty, staff and administrators who have a shared interest: protecting and preserving the environment.

Such stewardship is at once pragmatic and philosophical. We must take care of our water, land and air, which are all elements necessary for life itself. And, over the past few decades, there has been a growing understanding that it's our responsibility to ensure these assets are protected for future generations.

Since the creation of the President's Council on Sustainability in 2011, efforts to take care of our environment have been gaining momentum on campus. Creation of the Office of Sustainability in 2014 provided support, while approval of a sustainability policy in the same year gave added direction.

This Sustainability Strategic Plan is thoughtful and ambitious. It incorporates scholarship and interdisciplinary research. And, it ultimately reaches beyond campus boundaries because the environmental challenges we face are global.

I encourage you to learn more about the University's sustainability goals and to do whatever you can to help reach them.





# INTRODUCTION

**Sustainability is in our roots.** At the turn of the 20th century, the first president of the University, Dr. Edwin Lewis Stephens, hand-planted live oaks on campus. Now known as the Century Oaks, these majestic trees symbolize UL Lafayette's strength and stability.

Our University's values are deeply rooted in the Cajun and Creole cultures of our Acadiana region. These values strongly connect us to our environment and communities, and influence our inclination toward collaboration to solve problems. We value the right of each person to have the resources he or she needs to live and thrive. At a time when resource and economic efficiency is more important than ever, **we must all commit to do more, together.**

The University has been dedicated to the stewardship of our natural environment since its founding. This long-standing environmental ethic supports the University's mission to explore solutions to national and world issues through instruction, research, service, and exemplary leadership. Throughout our history, leaders have dedicated their time to transformative efforts to ensure a healthier environment and the availability of resources for future generations.

In recent decades, we have seen a resurgence in transdisciplinary University research projects that solve real world challenges we face in global sustainability. Simultaneously, there have been notable efforts led by students, faculty, staff, and the administration to institutionalize initiatives that make our campus and community more sustainable.

In 2009, University President Dr. E. Joseph Savoie led the formation of the President's Council on Sustainability. This council composed of faculty, staff, students, and administrators from across campus, continued gaining momentum and efficiencies, eventually advocating for the formation of the Office of Sustainability. In the fall of 2014, the University Council approved the Sustainability Policy developed by the President's Council on Sustainability and Office of Sustainability.

**The Sustainability Policy committed the University to fully embracing our environmental, social, and economic responsibilities and preparing each student for success as a globally responsible, productive citizen committed to environmental stewardship.** The Policy defined a vision for the University to continuously improve its efforts to protect, preserve, and manage natural resources and built environment within its domain for future generations. However, the policy was much more than a statement about our beliefs. It provided an essential directive to establish this Sustainability Strategic Plan.

This plan sets out strategic, time constrained objectives that will guide the entire University community in continuing our steady progress toward achieving our sustainability goals. Faculty, staff, students, and administrators worked together to incorporate principles of sustainability and strategies for progress into all areas of our institution, including our **operations**, our mission of **education and research**, and **engagement** of our campus community. In working to achieve our goals, **we will utilize our campus and region as a living laboratory to inform and inspire our students, faculty, staff and community to create positive, systemic changes for a sustainable future.** This plan is holistic, ambitious, and essential to the sustainability of our institution and community.

Achieving the objectives and reaching the goals set forth in this plan will require the University to redouble our commitment to engaging all of our stakeholders in our progress. Our success will be determined by our ability to effectively work across campus departments and campus boundaries. From our daily office and classroom operations, to our major research initiatives and athletic events, **we have abundant opportunities to involve all of our stakeholders to create a more sustainable future for our University, community, state, and world.**

The University's history of dedicating itself to sustainability principles has been rewarded with several honors, such as the U.S. Department of Education's 2016 Green Ribbon Schools Post-Secondary Sustainability Award, the first such honor for a Louisiana university. Yet, through self-assessment and cross-campus collaboration, we have recognized areas in need of improvement and the necessity for a plan to guide our progress.

**Our vision is for the entire University community to become more aware of our impacts on the environment and our community, at the institutional level and at our own personal level. We fully believe that in doing so, we will all become more conscientious and responsible, and the University will become stronger and more resilient.**

Cypress Lake. Doug Dugas

<b>2013</b>	President's Council on Sustainability is charged with the development of a University Sustainability Policy, a long-term sustainability vision for the University.
<b>summer 2011</b>	President Savoie establishes formal President's Council on Sustainability.
<b>spring 2013</b>	University Master Plan for campus development through 2030 approved.

<b>Jan. 2014</b>	First Director of Sustainability is hired.	<b>Feb. 2014</b>	St. Mary Boulevard reduced to a two-lane road with protected bike lanes.	<b>Aug. 2014</b>	The University goes tobacco-free with its "Breathe Easy" campaign.	<b>Sept. 2014</b>	The University partners with Cleco to open the Cleco Alternative Energy Center in Crowley, La., where researchers explore ways to generate power through renewable resources.	<b>fall 2014</b>	First GameDay Recycling Challenge is held during football season.
------------------	--	------------------	--	------------------	--	-------------------	---	------------------	---

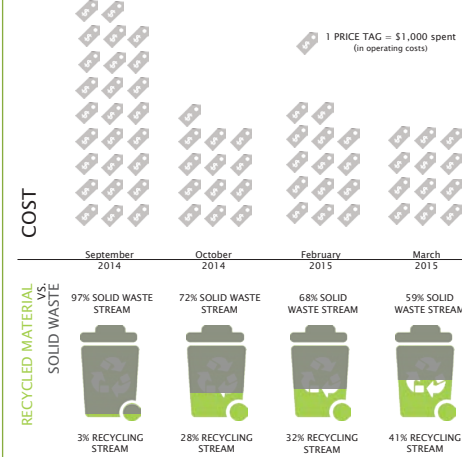




Oct.  
2014

University Council approves Sustainability Policy.

Restructured solid waste and recycling stream system.



May  
2015

First Goodwill, Not Landfill partnership with Goodwill of Acadiana during student resident move out.

Nov.  
2015

Bronze Bike Friendly University designation is awarded to UL Lafayette by League of American Bicyclists.



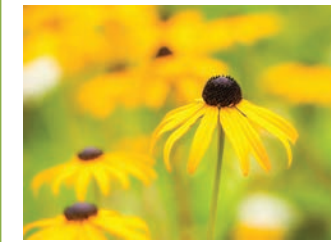
Apr.  
2016

UL is 1 of only 11 universities nationwide to receive the 2016 U.S. Department of Education Green Ribbon Schools Postsecondary Sustainability Award.



Sept.  
2017

10 acres of the Research Park are planted with native plains tickseed (coreopsis tinctoria) and clasping leaf coneflower (Rudbeckia amplexicaulis) from the Wildflower Seed Bank at the University of Louisiana at Lafayette Experimental Farm to create an urban prairiescape and reduce mowing.



Oct.  
2014

For the first time, 1,000 student volunteers pick up litter throughout Lafayette Parish for The Big Event, in partnership with Project Front Yard, initiating an annual tradition.

Jan.  
2015



UL Student Union reopens after renovation and expansion, and becomes the first public LEED Silver Building in Lafayette.

Jan.  
2016

Louisiana Department of Wildlife and Fisheries presents University with the Green Ribbon School award, making UL the first higher education institution in Louisiana to receive the honor.

March  
2016



Geaux Vélo Bikeshare launched on campus with 3 stations and 52 bikes.

Apr.  
2016

First bioswale constructed on campus during Fête de la Terre.



Summer  
2017

The University Council endorses the Sustainability Strategic Plan.

Dec.  
2017

UL is designated as a Tree Campus USA for the 9th consecutive year.



summer  
2018

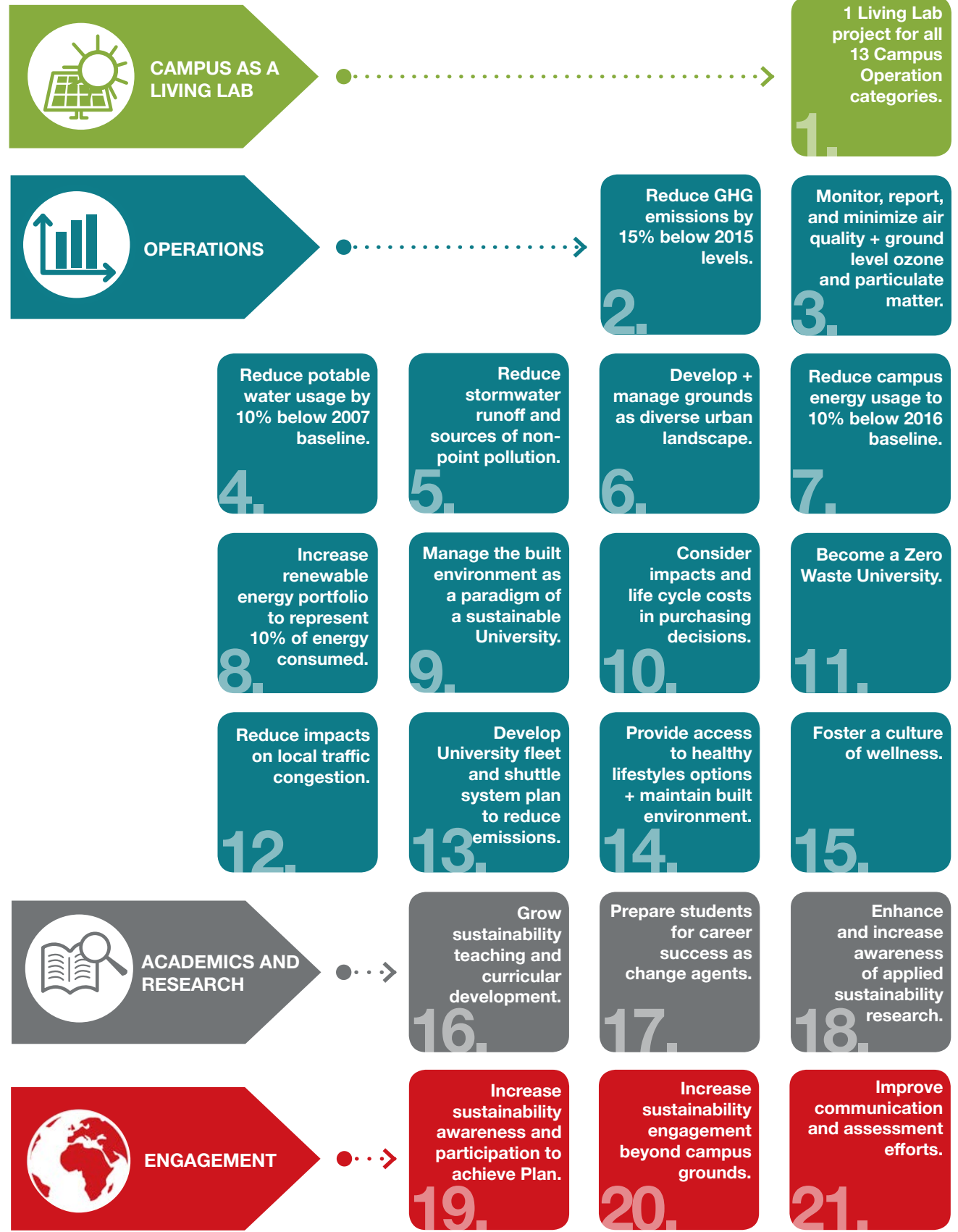
The Photovoltaic Applied Research and Testing Laboratory will be located on 5 acres in University Research Park.





Cypress Lake, Doug Dugas

# OVERVIEW OF OBJECTIVES





## Summer 2018

- Ban purchasing of polystyrene containers.
- Determine dining service's baseline for single-use disposables and sustainable food purchases.
  - Develop events and purchasing guides.
- Utilize rainwater from BeauSoleil Home cistern.
- Finalize installation of Photovoltaic Applied Research and Testing Lab system.

2018

## Fall 2018

- Install 1 bioswale on campus with volunteers.
  - Create Design and Construction and Building Operations Task Forces.
  - Begin composting and explore options for diverting food scraps to animal feed.
- Grow participation in electronic recycling program.
- Start "power down" program for breaks & weekends.
- Assess commuter modal split; plan for optimization.
- Analyze fleet and potential funding to replace current vehicles with more efficient vehicles.

## Spring 2019

- Complete installation of air quality sensors through LEARN EPA Smart City partnership.
  - Install 1 new rain garden and bioswale.
- Develop and formally adopt sustainable design and construction guidelines and policies.
- Develop and formally adopt sustainable building operation and maintenance guidelines and policies.
  - Complete lighting retrofit and installation of occupancy sensors in Bourgeois Hall.
- Increase food waste volume sent to Energy Institute.

2019

## Summer 2019

- Develop plan with targets for reducing fleet and shuttle system's use of fossil fuels & emissions.
  - Harvest rainwater from 1 additional rooftop for irrigation use.
- Install electric vehicle charging stations.

## Fall 2019

- Develop a method for analyzing vendor and suppliers' commitments to sustainability.
  - Launch incentives for carpooling and/or utilizing low or zero emission transportation options.
  - Develop strategies for reinvestment of savings from sustainability projects.
    - Open new student housing.
- Supply recycling bins to 100% of residential rooms.

2020

## Spring 2020

- Install 1 new rain garden or bioswale on campus with student volunteers.
- Harvest rainwater from 1 additional rooftop.
- Increase procurement of "real food" to 25%.
- Establish a transparent food reporting system to assess food procurement.
- Finish replacement of old vending machines with Energy Star versions, and/or installation of misers.

## Summer 2020

- Implement landscape practices with integrated pest management strategy.
  - Harvest rainwater from 1 additional rooftop for irrigation use.

## Fall 2020

- Complete the installation of occupancy sensors in 75% of campus buildings.
- Complete installation of co-located recycling and waste bins in 100% of STEP labs and lobbies.
  - Finish installation of debris traps on 100% of storm drains.
- Increase active Geaux Velo Bikeshare system users by 20% from Spring 2017 baseline.
- Develop Environmentally Preferable Procurement Policy that emphasizes sustainable materials management.

## Spring 2021

- Complete installation of water bottle refilling stations to 100% of buildings.
- Achieve a 50% reduction of 2018 baseline for single-use disposables and GreenPoints goal for food purchases in dining services.
  - Achieve commuter modal split goal.
  - Install one new rain garden or bioswale with help of volunteers.
- Reduce potable water usage on campus by 10% below 2007 weighted baseline.
- Summer 2021**
  - Achieve objective of reducing electricity use intensity to 10% below 2016 kWh/sq. ft.
  - Reducing mowing by 10% from 2017 baseline.
  - Reduce adjusted net Scope 1 and 2 GHG emissions 15% below 2015 levels.
  - Increase renewable energy portfolio to represent 10% of energy consumption.

2021

## Summer 2018

- Identify potential funding sources.
- Publish annual Sustainability Course Inventory.
  - Increase presence during Freshman Week.
  - Publish bi-weekly blogs.
- Develop online interactive map.

## Fall 2018

- Develop submission process.
- Announce Request for Proposals.
- Host Communities of Interest.
- Establish formal Sustainability R.A. Program.
- Develop online Introduction to Sustainability for UNIV 100.
- Establish Green Office and Green Lab Certification Programs.

## Spring 2019

- Announce first round of projects.
- Distribute survey to assess student sustainability literacy and values.
- Recognize leaders in research, practices, & education.
- Publish annual Sustainability Course and Programs Inventory.
- Grow Students for Sustainability into peer-to-peer organization.
- Launch website dashboard tool.

## Summer 2019

- Begin monthly blogs on Living Lab.
- Publish portfolio of sustainability research and other scholarship.
- Study feasibility of graduate program.
- Establish Sustainability Faculty Fellows.

## Fall 2019

- Announce second round of RFPs.
- Host Communities of Interest forum.
- Finalize Minor in Sustainability Leadership.
- Launch networking and mentor program.
- Publish annual report of sustainability service-learning and service projects.
- Incorporate sustainability guidelines & goals into new employee orientation.

## Spring 2020

- Announce second round of projects.
- Recognize leaders in research, practices, and education.
- Distribute survey.
- Publish Course and Programs Inventory.
- Complete STARS assessment.

## Summer 2020

- Publish annual report on Living Lab projects.
- Publish portfolio of sustainability research and other scholarship.

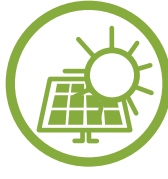
## Fall 2020

- Announce third round of RFPs.
- Host Communities of Interest forum.
- Increase courses that include sustainability by 10% from 2015 baseline.
- Publish annual report of service-learning and service projects.

## Spring 2021

- Announce third round of projects.
- Distribute sustainability literacy survey.
- Recognize leaders in research, practices, and education.
- Increase number of sustainability courses by 10% from the 2015 baseline.
- Publish annual Sustainability Course and Programs Inventory.
- Summer 2021**
  - Publish annual report on Living Lab projects.
  - Publish annual portfolio of sustainability research and other scholarship.
  - Increase volunteers participating in sustainability service projects by 10% from 2018 baseline.
  - Complete installation of interpretive signage for notable sustainability projects.

## Campus as a Living Lab



## Operations



## Academics & Research



## Engagement







## GOAL:

To utilize campus grounds, facilities, and operational systems for transdisciplinary project-based learning, applied research, and hands-on partnerships to prepare tomorrow's leaders and develop innovative solutions to sustainability challenges.



## CAMPUS AS A LIVING LAB

We strive to create a community of leaders and innovators in an environment that fosters a desire to advance and disseminate knowledge.

The University of Louisiana at Lafayette campus provides the perfect opportunity to merge our sustainability operational goals and mission to offer an exceptional education, with our natural penchant for solving real world problems through collaboration.

As we work to achieve the objectives set forth in this plan, we will engage experts in our classrooms and labs, students eager to get their hands on transformative experiences, and staff members who understand the systems that operate our facilities and grounds.

## Objective 1

Develop one Living Lab project for each area of operations to study campus infrastructure and make improvements by 2021.

### STRATEGY 1

Identify funding sources to support initiative:

- Pursue available funding opportunities through grants and private sources.
- Identify existing departmental funding that can be utilized for projects.

### STRATEGY 2

Develop Request for Proposal (RFP) process to provide opportunities for faculty, researchers, and students to propose Living Lab projects:

- Identify subcommittee within Council for Sustainability to develop necessary supporting documents, and submission and review process by summer 2018.
- Propose RFP process to President's Council for Sustainability in fall of 2018.

### STRATEGY 3

Launch Living Lab Initiative:

- Announce Request for Proposals in December 2018.
- Notify selected projects by February 2019.

### STRATEGY 4

Report results of Living Lab initiative:

- Include monthly blog updates regarding progress of Living Lab projects.
- Publish annual report of projects.





**GOAL:**

Cultivate a healthier, more resilient campus community and mitigate our negative environmental impacts affecting current and future generations by fully institutionalizing sustainability principles and best practices into all areas of university operations and development.



**OPERATIONS**

Campus includes over 250 buildings, farms, recreational areas, and research centers, all of which are carefully cultivated to reflect the natural beauty of Acadiana.

Main campus features 150 acres in the heart of Lafayette, Louisiana, easily accessible by foot, bike, automobile, or public transit. At the center of campus is our LEED Silver Student Union and Cypress Lake, a managed wetland filled with cypress trees, irises, fish, turtles, birds, and alligators.

In 2013, a Master Plan was developed to guide the University as it continues to grow and develop. The document was created around smart growth principles, including a pedestrian and bike-friendly campus, mixed-use opportunities, and interconnected thoroughfares.



AIR AND CLIMATE



BUILDINGS AND PLANNING



WATER USE AND WATERSHED



MATERIALS MANAGEMENT



LANDSCAPE AND HABITATS



TRANSPORTATION



ENERGY



HEALTH AND WELLNESS





Girard Park Circle Parking Garage



## AIR AND CLIMATE

### Objective 1

Reduce adjusted net Scope 1 and Scope 2 GHG emissions associated with campus operations by 15% below 2015 levels by July 1, 2021.

#### STRATEGY 1

Focus on vehicle maintenance and operations:

- Prohibit vehicle idling.
- Train staff using motor pool in efficient driving methods.
- Keep engines properly tuned and tires properly inflated.
- Replace vehicles at the end of their use with more fuel-efficient alternatives.
- Convert selected grounds equipment to biodiesel or waste vegetable oil engines.

#### STRATEGY 2

Reduce use of fossil fuels:

- See Energy, Landscaping, and Transportation sections.

#### STRATEGY 3

Reduce single occupancy vehicles associated with campus operations:

- Increase student housing on campus.
- See Transportation Section.

## Objective 2

Monitor, report, and develop strategies with stakeholders to protect local and regional outdoor air quality and minimize ground level ozone and particulate matter pollution.

#### STRATEGY 1

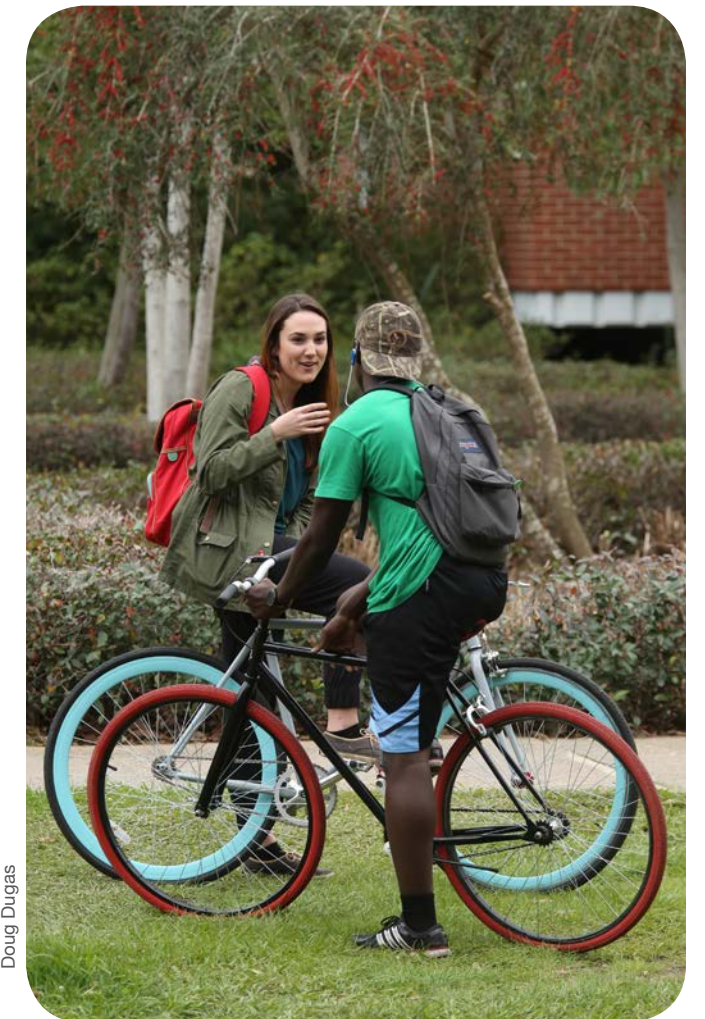
Partner with Lafayette Consolidated Government and CGI to lead the Lafayette Engagement and Research Network Team in the EPA Smart City Challenge:

- Engage students and researchers in selecting, calibrating, and assembling air-quality sensors.
- Identify best locations for distributing an air quality sensor network throughout Lafayette Parish.
- Install air quality sensors on University properties by 2019.

#### STRATEGY 2

Communicate the collected data and University progress in efforts to protect air quality and minimize ground level ozone and particulate matter pollution:

- Report monthly updates through website, blog, social media, and direct communication.
- Utilize community, student engagement, and academic events, such as Fête de la Terre and Cajun Code Fest, to communicate directly with students about air quality monitoring and best practices for improving air quality.



Doug Dugas

University students biking on campus.





Fête de la Terre 2015 Coulee Debris  
Installation displaying litter collected  
from Coulee Mine.



## WATER USE AND WATERSHED PROTECTION

### Objective 1

Reduce potable water usage on campus by 10% below 2007 weighted baseline, including process, irrigation, and consumer water usage by July 1, 2021.

#### STRATEGY 1

##### Optimize operations and maintenance:

- Inventory and perform quarterly audits of major water consuming fixtures, equipment, systems, and processes.
- Utilize harvested rainwater from the BeauSoleil Louisiana Solar Home cistern for irrigation use.
- Continue replacing non-native, ornamental plants with drought resistant, native landscaping and perennial selections.

#### STRATEGY 2

##### Increase communications and outreach:

- Report monthly water usage and costs through website, newsletter, and direct communication to department heads and sustainability liaisons.
- Implement semester staff meetings with department heads and/or their designees to discuss water use, costs, and employee responsibilities.
- Improve outreach efforts to inform students and staff about the benefits of water conservation.
- Implement a reporting program for faculty, staff, and students to report detected leaks and/or continuously flushing toilets.

#### STRATEGY 3

##### Procure water conservation technology:

- Install WaterSense®-labeled aerators or laminar flow devices on all bathroom sink faucets in private restrooms.
- Standardize specification of high efficiency, WaterSense®-labeled toilets and/or urinals for new construction or renovation of all restrooms.
- Standardize the use of irrigation controllers and micro-irrigation sprinklers to reduce daytime irrigation, reduce evaporation of irrigation, and minimize unnecessary watering after rainfall.

### Objective 2

Improve local Teche-Vermilion watershed by reducing stormwater runoff and potential sources of non-point pollution.

#### STRATEGY 1

##### Manage rainwater as a valuable resource:

- Harvest rainwater from three additional rooftops for irrigation use by July 1, 2020.

#### STRATEGY 2

##### Implement green infrastructure and utilize low impact design where possible:

- Install three new rain gardens and two new bioswales on campus by July 1, 2021 with the help of student volunteers.
- Increase tree canopy in areas along drainage coulees and storm drains.
- Analyze potential for a green roof installation on either an existing or new building.
- Utilize impermeable pavement options for selected applications.

#### STRATEGY 3

##### Reduce and manage potential sources of pollution:

- Increase litter cleanups to monthly events with support from students, faculty, and staff volunteers.
- Focus volunteer cleanup efforts along parade routes after Homecoming and Mardi Gras.
- Include storm drain and catch basin clean-outs in annual community service events like SoUL Camp and The Big Event.
- Reduce food packaging on campus and develop incentives for nearby fast food restaurants to participate.
- Increase access to recycling and waste containers.
- Finish the installation of debris traps on all storm drains by fall 2020.
- Continue to carefully monitor all construction projects, fertilizer and pesticide applications, and disposal of household chemicals to ensure proper methods are in place to protect the watershed.





Mark Simon, Manager of UL Lafayette's Experimental Farm and Wildflower Seedbank near Cade, LA, prepares the field for wildflowers .

Doug Dugas



# LANDSCAPE AND HABITATS

## Objective 1

Develop and manage campus grounds as a paradigm of a diverse, urban landscape that provides the University and community with environmental, economic, and social benefits, while supporting biodiversity.

### STRATEGY 1

**Develop the University Common area as a native arboretum:**

- Plant new, native trees and shrubs that support wildlife habitat each year as part of The Big Event.
- Improve the area along drainage coulees with native landscaping.

### STRATEGY 2

**Expand and promote the benefits of a productive landscape on campus:**

- Engage student volunteers to plant new fruit trees each year as part of the campus Arbor Day celebration.
- Utilize all communication methods to promote to student, faculty, and staff when fruit is ripe.

### STRATEGY 3

**Develop and implement sustainable landscape development and maintenance practices on campus that prioritize an Integrated Pest Management strategy by July 1, 2020.**

### STRATEGY 4

**Complete annual assessment to identify, protect, and support any environmentally sensitive areas and endangered or vulnerable species, including migratory species with habitats on campus and University-managed lands.**

### STRATEGY 5

**Implement a mowing reduction program to reduce mowing area and frequency by 10% to decrease grounds maintenance costs and yield environmental benefits:**

- Establish vegetative buffers, with native plants, wildflowers, and grasses that support pollinator habitats.
- Implement a trail project utilizing growth regulators on lawns to reduce frequency of mowing.
- Select slow-growing grass for new areas that are sodded.







Solar Thermal Concentrating Array System at the UL Lafayette Energy Development Complex

Doug Dugas



## ENERGY

### Objective 1

Reduce campus energy use intensity (EUI) to 10% below 2016 levels, adjusted for changes in square footage, by July 1, 2021.

#### STRATEGY 1

##### Optimize operations and maintenance:

- Conduct nighttime audits to determine whether unnecessary equipment and lighting are being utilized after business hours.
- Perform scheduled maintenance of HVAC equipment to guarantee efficient operation throughout the year.
- Annually inspect insulation of pipes, ducts and equipment for damage.
- Optimize start-up and power-down time for all STEP Labs by fall 2018.
- Establish break and weekend “Power Down” program by December 2018.
- Pilot summer classroom scheduling optimization in July 2018.
- Analyze classroom scheduling practices to determine if strategic space planning during summer and winter break semesters can reduce energy by December 2018.

#### STRATEGY 2

##### Increase communications and outreach:

- Report monthly energy usage and costs through website, newsletter, and direct communication to department heads and sustainability liaisons.
- Implement semester staff meetings with department heads and/or their appointments to discuss energy use, costs, and employee responsibilities.
- Improve outreach and education efforts to inform students and staff of the benefits of energy conservation.
- Discourage use of space heaters and personal refrigerators.

### STRATEGY 3

#### Procure energy-saving technology:

- Retrofit Bourgeois Hall with energy-efficient lighting by spring 2019.
- Install vending misers and/or have older vending machines replaced with Energy Star versions by spring 2020.
- Standardize specification of Energy Star appliances for all renovations and new construction.
- Finish the installation of occupancy sensors in 75% of buildings by 2021.
- Continue replacement of inefficient HVAC equipment as funding becomes available.

### Objective 2

Increase the University’s renewable energy portfolio through campus installations and purchasing preferences to represent 10% of the energy we consume by July 1, 2021.

#### STRATEGY 1

##### Increase renewable energy:

- Finalize installation of Photovoltaic Applied Research and Testing Lab by fall 2018.
- Encourage Lafayette Utilities System to increase renewable energy purchasing from Midcontinent Independent System Operator, Inc.
- Seek additional funding opportunities for renewable energy.

#### STRATEGY 2

##### Reduce overall energy consumption:

- See above section.



Phillip Gould

Construction of BeauSoleil Solar Louisiana Home in Washington, D.C.





## BUILDINGS AND PLANNING

### Objective 1

Develop and manage the campus as a paradigm of a sustainable University that recognizes the environmental, economic, and social impacts and opportunities of the built environment.

#### STRATEGY 1

Utilize the principles, standards, and strategies of the Campus Master Plan to advance sustainable development of the campus.

#### STRATEGY 2

Develop and formally adopt sustainable design and construction guidelines and policies, consistent with the Campus Master Plan and a minimum of LEED Silver standards, for all new construction and approved comprehensive renovations by summer 2019:

- Create a task force with Facilities Management staff, faculty from the School of Architecture and Design, and Campus Planning Committee by fall 2018.

#### STRATEGY 3

Develop and formally adopt sustainable building operation and maintenance guidelines and policies by summer 2019:

- Create a task force with staff from Facilities Management, Sustainability, University Housing, Athletics, Student Union, Food Services, the custodial contractor, and President's Council on Sustainability by fall 2018.

#### STRATEGY 4

Develop and implement internal guidelines and procedures to invest a portion of cost savings obtained from sustainability practices into advancing other cost-saving sustainability initiatives:

- Track and publish cost savings from established baselines for solid waste and recycling management, energy, and water costs.

#### STRATEGY 5

Increase awareness of and engagement in sustainability activities related to facilities construction and operations:

- Utilize a web-based tool to communicate progress in pursuing operational goals.
- Engage students through service-learning projects to achieve objectives outlined in the plan.



University administration, SGA President, and project leaders receive LEED Silver Plaque for the Student Union renovation, making it the first LEED Certified public building in Lafayette. From left: William Lemoine, vice president of commercial construction, the Lemoine Co.; Jerry Luke LeBlanc, vice president for Administration and Finance, UL Lafayette; Dr. Joseph Savoie, president, UL Lafayette; Steve Oubre, principal, Architects Southwest; Kirsten Allen, president, UL Lafayette Student Government Association; and Wayne Domingue, project manager, Architects Southwest.





## MATERIALS MANAGEMENT

### Objective 1

Consider the environmental and social impacts of goods and services, and long-term operations and maintenance costs along with the initial cost in decision-making.

#### STRATEGY 1

**Build capacity and incorporate integrated materials management approaches into existing policies and procedures:**

- Engage purchasing agents to raise awareness about purchasing decisions from a systems or “life-cycle” approach.
- Develop a sustainable purchasing guide about readily achievable improvements that can be made with routine purchases by fall 2018.
- Develop an Environmentally Preferable Procurement Policy that emphasizes sustainable materials management criteria by fall 2020.
- Support and reward departmental champions for sustainable materials management and encourage collaboration across the material stream.

#### STRATEGY 2

**Analyze current procurement practices to determine opportunities:**

- Analyze impacts of purchases across departments and commodity categories to prioritize opportunities for improvement by fall 2019.
- Develop a method for analyzing and annually reporting vendor and suppliers’ own commitments to sustainability and how their initiatives can help the University simultaneously achieve our own sustainability goals by fall 2019.

#### STRATEGY 3

**Manage all potential hazardous waste streams throughout their entire life-cycle according to local, state, and national regulations to minimize any potential adverse impacts on human health and the environment.**

### Objective 2

Become a Zero Waste University by managing our resources more effectively – from initial planning and purchasing to disposal.

#### STRATEGY 1

**Prevent waste by eliminating the use of contaminants and unnecessary packaging:**

- Ban purchasing of non-recyclable polystyrene containers after summer 2018.
- Eliminate double and triple packaging from to-go dining operations.
- Determine a baseline for single-use dining containers, utensils, and condiment packets by fall 2018, and reduce by 50% by spring 2021.
- Install water bottle refilling stations to 100% of buildings by spring 2021.

#### STRATEGY 2

**Improve access to recycling across all campus functions and areas:**

- Supply recycling containers to 100% of residential rooms by fall 2019.
- Complete installation of co-located recycling and waste bins in 100% of building lobbies and STEP Labs by fall 2020.
- Increase access to outdoor recycling bins along every corridor and space.

#### STRATEGY 3

**Expand material handling systems to responsibly manage all excess food and food waste according to the EPA’s Food Recovery Hierarchy:**

- Grow source reduction efforts and programming, such as “Weigh the Waste”.
- Expand partnership with Second Harvest to recover all suitable food.
- Explore options for diverting food scraps to animal feed by fall 2018.
- Increase food waste sent to the Energy Institute for research by spring 2019.
- Utilize Cade Experimental Farm for composting operations by fall 2018.

#### STRATEGY 4

**Pursue, expand, and assess alternative options to landfills for goods and materials that cannot be sent to a material recovery facility (MRF):**

- Increase participation in directing non-functional electronic equipment to third-party certified recyclers or refurbisher, or to manufacturer take-back programs that use certified recyclers to 100% of departments by fall 2018.
- Recycle all eligible materials from demolition and construction projects.
- Convert 100% of green waste to mulch or compost.
- Expand programming that provides alternatives to landfills, such as Goodwill, Not Landfill and the Surplus Shop.

#### STRATEGY 5:

**Encourage campus events to address materials management throughout all stages including planning, promotion, and production:**

- Develop a Green Events Guide with steps to reduce, recover, and recycle all unused materials and resources associated with an event by fall 2018.
- Require materials and food recovery, recycling, and compost at all events with a goal of zero waste for all.





Doug Dugas



## TRANSPORTATION

### Objective 1

Reduce campus community's impact on local traffic congestion and associated vehicle emissions by reducing single-occupancy vehicle use by students, faculty, and staff.

#### STRATEGY 1

**Determine baseline for commuter modal split by December 2018 and define specific reduction goal for single occupancy vehicles:**

- Identify existing mode share on campus for all students, faculty, and staff.
- Use data to make the case for capital improvement projects that will benefit large proportions of the campus community.
- Develop a specific plan for residents in the 5-minute walk and 10-minute walk zones identified in the Campus Master Plan.
- Survey students, faculty, and staff about transportation, particularly their driving and alternative transportation habits.
- Establish performance metrics beyond mode of transport, including outreach and education programs and reductions in bicycle and pedestrian accidents.

#### STRATEGY 2

**Expand access to safe and sustainable, active transportation options for students, faculty, and staff:**

- Convene the Campus Bicycle Committee on a regular basis to discuss issues and plan for improvements.
- Improve infrastructure according to the Campus Master Plan.
- Promote complete streets principles and advocate for its implementation.
- Expand the Geaux Vélo Bikeshare program and promote it as an alternative to the campus shuttle.

- Improve the quantity and quality of bike parking and amenities on campus, including the installation of bike stations and covered racks.
- Work with government and planning agencies to optimize conditions of the core region of Lafayette to make walking and biking a safe, desirable option.

#### STRATEGY 3

**Encourage the University community to use active transportation methods:**

- Promote the health and wellness benefits of walking and biking, as opposed to single-occupancy vehicles.
- Integrate active transportation programming into existing campus traditions and academic programs.
- Incorporate bicycle safety, education, and outreach efforts as part of incoming freshman orientation programs.
- Include information about active transportation and Geaux Vélo in welcome packets for students and parents.
- Celebrate Bike to Work Day and participate in the National Bike Challenge.
- Offer training for bikers on topics such as skills, traffic, and maintenance.
- Engage Geaux Bike student organization in familiarizing other students with local bike culture, safety, and infrastructure.
- Include walking and biking as transportation options in all communications methods about transportation.

#### STRATEGY 4

**Encourage faculty, staff, and students to utilize low- or zero-emission transportation methods, including rideshare, mass transit, and electric or hybrid vehicles:**

- Install electric vehicle (EV) charging stations on campus by summer 2019.
- Provide incentives, such as preferred parking, for faculty and staff that utilize rideshare, electric, or hybrid vehicles by fall 2019.
- Provide incentives for students, faculty, and staff that utilize the Lafayette Transit System, and/or develop routes that expand service with University Transit System by fall 2019.
- Improve outreach and education efforts to inform students and staff of the benefits of sustainable transportation options.
- Partner with Acadiana Planning Commission to establish and launch a ridesharing program that helps connect commuters with carpool matches.
- Explore the option of a car-share program for student residents who move to campus without a vehicle.

### Objective 2

Develop a plan with specific targets for reducing University fleet and shuttle system use of fossil fuels and associated emissions.

#### STRATEGY 1

**Partner with Louisiana Clean Fuels to analyze and improve our fleet:**

- Analyze our fleet of vehicles for potential improvements by fall 2018.
- Determine funding sources and feasibility of replacing existing vehicles with more efficient vehicles by fall 2020.





University student bikes across campus.

Doug Dugas



## HEALTH AND WELLNESS

### Objective 1

Enhance the personal health, well-being, and quality of life for our students, faculty, and staff by providing access to healthy lifestyle options and properly maintaining our built environment.

#### STRATEGY 1

**Integrate sustainable practices into food purchasing operations:**

- Establish a transparent food reporting system to assess food procurement.
- Determine a baseline for sustainable foods according to the Green Restaurant Association standards by fall 2018, and define a “GreenPoints” goal to achieve by spring 2021.

#### STRATEGY 2

**Increase awareness of and develop opportunities to engage in fostering ecologically sustainable, humane, and socially equitable food systems on campus:**

- Start a garden on campus, as a service-learning opportunity, to increase awareness of benefits from locally grown food and to address food insecurity by supporting the Campus Cupboard and Second Harvest.
- Utilize a map in the Cypress Lake Dining Hall to inform diners where food is grown and the importance of local food sourcing.
- Support local farmers and markets by either hosting regular Farmers’ Markets and/or a Community Supported Agriculture (CSA) pick up location.

#### STRATEGY 3

**Monitor and improve indoor air quality (IAQ) and establish indoor air quality (IAQ) as a priority for renovation and repair programs:**

- Consider health and wellness benefits when calculating cost/benefits of retrofit projects such as enhanced comfort, better IAQ, improved learning environments, and enhanced productivity.
- Formalize procurement, building maintenance, and specification guidelines to optimize IAQ for building inhabitants.

### Objective 2

Foster a culture of wellness among students, faculty, and staff by promoting healthy lifestyles and providing holistic wellness resources.

#### STRATEGY 1

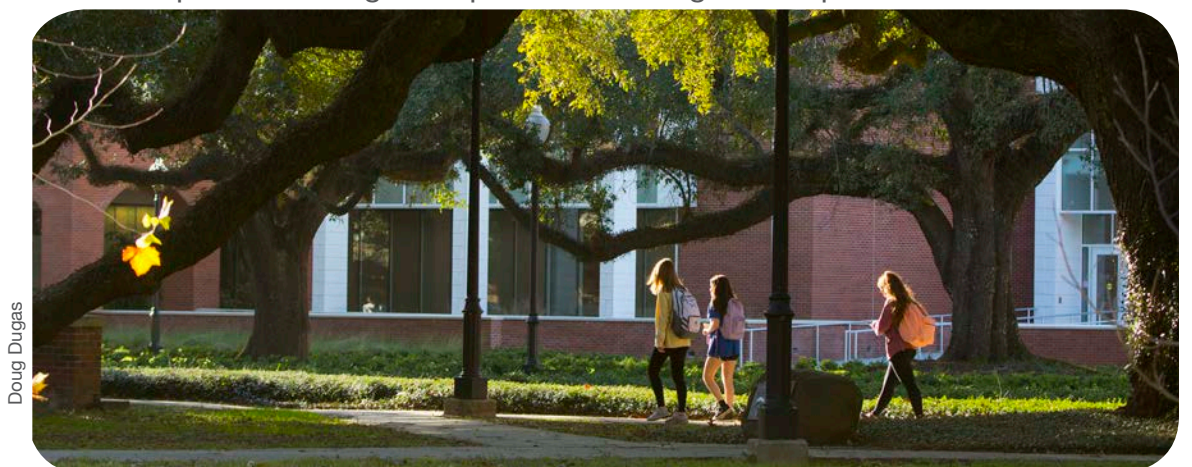
**Provide incentives and opportunities for faculty and staff to access resources that support various aspects of a sustainable, well life:**

- Partner with UL Lafayette Recreational Sports to promote available programs and increase awareness of health benefits.
- Work with Human Resources to develop an incentive program that rewards staff and faculty for sustainable behaviors like physical fitness, nutrition, volunteering, and using alternative transportation.
- Explore the potential for instituting a dedicated wellness program that promotes and provides programming for stress reduction, emotional health, financial wellness, and social health.
- Promote the benefits of the Breathe Easy Tobacco-Free policy.

#### STRATEGY 2

**Promote the potential human health and well-being benefits of frequent access to green spaces through programming and communications:**

- Plan quarterly events for faculty and staff that connect service opportunities with healthy initiatives.
- Partner with local organizations to develop opportunities that connect the University with our local natural resources.
- Develop accessible green spaces according to Campus Master Plan.



Doug Dugas

Students in front of the Student Union.





**GOAL:**

Educate, inspire, and foster students' development into change agents who are informed and capable of implementing thoughtful, effective solutions to the environmental, social, and economic challenges we face at the local, national, and global scales.



**ACADEMICS AND RESEARCH**

Transdisciplinary academic programs and applied research are essential to the advancement of sustainability practices in Louisiana and similar communities worldwide.

At the University, we pride ourselves on the quality of our programs, the innovativeness of our students and faculty, and our ever-present passion for making a difference in the world. UL Lafayette specializes in applied research that solves real-world problems.

As an institution of higher learning, the University is committed to preparing each student for success as a globally responsible, productive citizen committed to environmental stewardship.



EDUCATION AND PROFESSIONAL DEVELOPMENT



RESEARCH





Design students meet in Fletcher Hall.



## EDUCATION AND PROFESSIONAL DEVELOPMENT

### Objective 1

Grow sustainability teaching and curricular development.

#### STRATEGY 1

**Increase sustainability courses and courses that include sustainability offerings in every academic college:**

- Establish Sustainability Faculty Fellows Program by summer 2019 to support faculty in the development of new course offerings or the integration of sustainability principles into existing courses.
- Increase the number of sustainability courses by 10% from the 2015 baseline of 68 courses, by July 1, 2021.
- Increase the number of courses that include sustainability by 10% from the 2015 baseline of 112 courses, by July 1, 2021.
- Increase student enrollment in sustainability-focused and sustainability-related courses.
- Increase the visibility of established courses by publishing annual course inventory.

#### STRATEGY 2

**Increase enrollment in academic programs that focus on sustainability:**

- Study feasibility of graduate level sustainability program and develop proposal by summer 2019.
- Finalize minor in Sustainability Leadership by fall 2019.
- Support the development of other sustainability related academic programs.
- Increase the visibility of established academic programs by publishing annual report and providing programming opportunities.

## Objective 2

Prepare students for successful careers that leave a positive impact on the environment, society, and the economy.

#### STRATEGY 1

**Formally assess the sustainability literacy of students, including their knowledge of sustainability topics and challenges, as well as their values, beliefs, and behaviors:**

- Distribute annual survey to students by spring 2019.
- Adapt operations, engagement, and communications strategies to improve results.

#### STRATEGY 2

**Increase opportunities for transdisciplinary, hands-on experiences that introduce students to challenges and opportunities related to sustainability:**

- Utilize Living Lab initiative as a method for promoting these experiences.
- Engage faculty in planning service-learning projects related to sustainability.

#### STRATEGY 3

**Expand professional development and leadership-building opportunities for students seeking careers in sustainability:**

- Develop networking and mentoring programs for students interested in sustainability-related careers by fall 2019.
- Grow student participation in sustainability-related pre-professional societies.
- Partner with Office of Career Services to foster positive relationships with potential employers in the fields related to sustainability.



University architecture graduate student presents a master plan for sustainable development for the Camp Beauregard Cantonment to military personnel.





Ashley Picou Mikolajczyk, an Instructor in the College of Engineering who is pursuing a doctorate in chemical engineering, is shown studying alligator egg yolks.



## RESEARCH

### Objective 1

Enhance sustainability research and the University's reputation as an institution that specializes in applied research that solves real-world problems or improves people's lives.

#### STRATEGY 1

**Increase visibility of sustainability research:**

- Develop and maintain a database in conjunction with the Office of the Vice President for Research, Innovation, and Economic Development that thoroughly documents past, current, and future sustainability-related and focused research.
- Publish monthly sustainability research blog highlighting current research.
- Publish annual portfolio of sustainability research and other forms of scholarships conducted by faculty and researchers.

#### STRATEGY 2

**Partner with local organizations in the community and region to share progress and encourage the adoption of sustainability solutions beyond our campus:**

- Host annual Communities of Interest forum for the public to highlight our faculty and staff's research, and expand transdisciplinary research efforts.
- Seek public and private partnerships to fund research and proven solutions on campus and in our communities.
- Seek to partner with local organizations in grant and program opportunities that advance sustainability practices.

#### STRATEGY 3

**Engage faculty and researchers in analyzing portfolio of sustainability research to determine areas of opportunity and commonality:**

- Develop network of faculty and researchers across University colleges, institutes, and centers that are involved in sustainability research.
- Increase faculty and researcher participation in the Communities of Interest forum.

#### STRATEGY 4

**Recognize students, faculty, researchers, staff, and alumni that lead sustainability practices and research:**

- Distinguish students that lead sustainability research annually.
- Institute an award program that aims to support faculty and researchers from across multiple disciplines in conducting transdisciplinary research to solve complex sustainability problems.
- Recognize alumni that lead sustainability efforts in the community in an annual report.



UL Lafayette Energy Institute

Mobile 300-gallon anaerobic digestion unit is used for researching renewable energy sources. (UL Campus)



UL Lafayette Energy Institute

Catalyst development system (UL Campus)



UL Lafayette Energy Institute

3-Ton/day Biomass fed gasifier processes wood chips to generate power and fuel. (Cleco Alternative Energy Center)





### GOAL:

Lead discussions and initiatives that will increase awareness, foster positive lifestyle changes, and inspire active involvement from the entire University community



### ENGAGEMENT

We prepare students to do more than earn a living. The life lessons we offer transcend any textbook. We nurture their ability to listen, reflect, articulate, and savor because these are tools for a lifetime of thoughtful citizenship.

Service, campus engagement, and community engagement are fundamental to our role as a University. We are enthusiastic about our environmental, social, and economic responsibilities as a partner in our community.

We're passionate about the possibilities for a better, more sustainable world. But we also know good intentions aren't enough. That's why we've embraced serving others and work tirelessly to improve our communities by applying what we're learning.



CAMPUS ENGAGEMENT



COMMUNITY ENGAGEMENT



COMMUNICATIONS AND ASSESSMENT





2016 freshman gather in the Quad.

Doug Dugas



## CAMPUS ENGAGEMENT

### Objective 1

Increase sustainability awareness and participation in working towards achieving our goals in the Strategic Sustainability Plan.

#### STRATEGY 1

Utilize student orientation and UNIV 100 as opportunities to demonstrate to new students the importance of sustainability, our sustainable practices and programs, and our institutional commitment to sustainability:

- Host at least 3 sustainability focused events (booths, activities, lectures, forums, etc.) during student orientation and/or Freshmen Week.
- Organize guest speaker opportunities to present to UNIV 100 classes throughout the semester.
- Develop online sustainability lesson for use by UNIV 100 staff by fall 2018.

#### STRATEGY 2

Leverage strong student engagement culture to increase awareness among students:

- Develop Students for Sustainability into an effective “peer-to-peer” sustainability outreach organization that helps encourage sustainability practices throughout other organizations.
- Establish a formal Sustainability residents assistant program that meets monthly with the Office of Sustainability to help student residents assimilate to sustainable living on campus and in our community by fall 2018.
- Formerly assess the perceived value and expected outcomes of our sustainability commitment among students by spring 2019.

#### STRATEGY 3

Expand service initiatives and scope to engage more students, faculty, and staff in creating a more sustainable campus, community, region, and state:

- Partner with the Office of Community Service to develop a database of service hours obtained in sustainability-related service projects by spring 2019.
- Use new database to document the number of volunteers annually and aim to increase this number by 10% annually.
- Publish annual report of service-learning projects related to sustainability.
- Engage student organizations in achieving goals set forth in the Strategic Sustainability Plan.

#### STRATEGY 4

Engage all faculty and staff in achieving the goals set forth in the Strategic Sustainability Plan:

- Formalize department liaison and employee training programs with the establishment of Green Office and Green Lab Certification Programs by fall 2018.
- Include sustainability guidelines, goals, and responsibilities in new employee orientation by summer 2019.
- Schedule regular meetings to update department heads and/or liaisons on progress.



Doug Dugas

Students in front of Hamilton Hall.





SOUL Camp students help with recovery from 2016 flood.



## COMMUNITY ENGAGEMENT

### Objective 1

Increase sustainability engagement beyond campus grounds and work with our partners to translate sustainability awareness into action that will improve our community, region, and state.

#### STRATEGY 1

Cultivate town-gown partnerships that foster sustainable community benefits:

- Work with community partners who utilize sustainable best practices in community development through planning initiatives such as Plan Lafayette, Evangeline Corridor Initiative, and I-49 Lafayette Connector.
- Continuously seek collaborations that improves the quality of life for our entire community.
- Highlight progress in an annual community engagement report.

#### STRATEGY 2

Serve as a primary catalyst for expanding successful University initiatives and systems into the community, region, and state:

- Foster conversations with partners through Global Sustainability Communities of Interest and events, such as Fête de la Terre.
- Seek partnerships with local organizations and events that advance sustainability practices through community service.
- Coordinate with other universities within the University of Louisiana System and the state of Louisiana to develop a higher education sustainability consortium for our state.

### STRATEGY 3

Leverage our strong Ragin' Cajun community to engage fans:

- Partner with Athletics Department to use their platform as a connection to the community to promote the University's commitment to sustainability and our progress.
- Utilize athletic events as an opportunity to promote sustainable operations and influence fans' behaviors.



Office of Sustainability

Student volunteers for the Big Event fill #YARDWORK litter letters with litter collected from throughout Lafayette Parish.



Office of Sustainability

E-Waste drive hosted as part of 2016 Fête de la Terre



Office of Sustainability

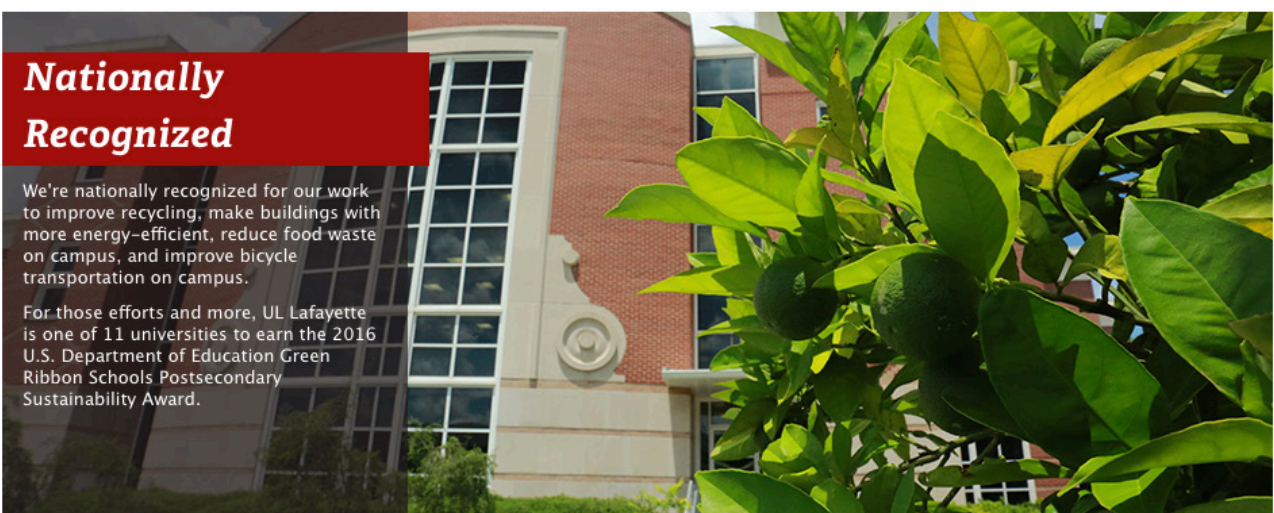
Students begin to gather at the 2016 Fête de la Terre Expo.



Office of Sustainability

Better Block McKinley kicks off in nearby neighborhood as part of a UNIV 100 community outreach project for The Big Event.





## Nationally Recognized

We're nationally recognized for our work to improve recycling, make buildings with more energy-efficient, reduce food waste on campus, and improve bicycle transportation on campus.

For those efforts and more, UL Lafayette is one of 11 universities to earn the 2016 U.S. Department of Education Green Ribbon Schools Postsecondary Sustainability Award.



# COMMUNICATIONS AND ASSESSMENT

## Objective 1

Improve communication and assessment efforts to foster a culture of sustainability, promote efforts, and measure progress.

### STRATEGY 1

Develop a dynamic Office of Sustainability website:

- Publish a minimum of two blogs each month starting in August 2018.
- Within website, include detailed information about the goals, objectives, and strategies set through the Sustainability Plan.
- Track and benchmark progress in achieving operational objectives through dashboard tool with monthly updates related to energy, water, waste reduction, fuel use, and Geaux Vélo rides by spring 2019.
- Once per semester, feature change agents and leaders in sustainability initiatives in spotlight feature.
- Serve as a resource for interested stakeholders.

### STRATEGY 2

Distinguish notable examples of campus sustainability projects throughout our physical environment:

- Develop interactive, online campus sustainability map by fall 2018.
- Utilize standardized signage to highlight areas of interest on campus and describe the sustainable benefits.
- Include notable projects and features on the campus map.
- Offer tours of campus that highlight sustainability initiatives to interested students and parents, alumni, and community members.

### STRATEGY 3

Increase community awareness and engagement in accomplishing our comprehensive goals:

- Meet with members of the University's Office of Communications and Marketing regularly to implement marketing and outreach plan.
- Promote our commitment to sustainability as a core value of our University.

### STRATEGY 4

Make sustainability assessment a transparent process that promotes collaboration across campus, and informs institutional planning and development:

- Complete the Association for the Advancement of Sustainability in Higher Education STARS program by spring 2020.
- Utilize STARS and annual assessment process, as defined by the University Office of Institutional Assessment, as an opportunity to engage members of the President's Council on Sustainability and the entire campus community in assessing our work and developing action plans for continued progress.
- Include findings and action plans from annual assessment in annual reports, website, and other forms of communications.



Utilizing social media platforms to share information.



Students, faculty, and staff personalize reusable grocery bags at Fête de la Terre.



# APPENDICES

## APPENDIX 1: GLOSSARY OF TERMS

**Course that includes sustainability** - A course that is primarily focused on a topic other than sustainability, but incorporates a unit or module on sustainability or a sustainability challenge.

**Breathe Easy** - This policy is created to promote the health, well-being, and safety of students, faculty, staff, and visitors at the University of Louisiana at Lafayette by minimizing the negative effects of tobacco use and encouraging a more sustainable environment.

**Campus Master Plan (aka Master Plan and Guiding Principles)** - A comprehensive plan arose in the spring of 2013 from a vision to improve the University's environment and make it one of the most comfortable and inspiring academic institutions in America. It is intended to guide the physical growth of the campus into the 2030s.

**Complete Streets** - streets that are designed and operated to enable safe access for all users, including pedestrians, bicyclists, motorists and transit riders of all ages and abilities.

**Diversion Rate** - Percentage of waste diverted from a landfill. It is calculated by dividing pounds of recyclables and compostables by total pounds of trash, recyclables, and compostables, and then multiplying the answer by 100.

**Energy Star** - Label given to products, buildings, or homes that are independently certified to use less energy and cause fewer of the emissions that contribute to climate change.

**Energy use intensity (EUI)** - Expresses a building's energy use as a function of its size or other characteristics, expressed as energy per square foot per year.

**Food Recovery Hierarchy** - A waste reduction strategy, developed by EPA, that prioritizes actions organizations can take to prevent and divert wasted food. The top levels of the hierarchy are the best ways to prevent and divert wasted food because they create the most benefits for the environment, society and the economy.

**Fête de la Terre** - The University's annual week-long Earth Day celebration held in April.

**Green Restaurant Association® Certification Standards** - The purpose of the GRA standards is to provide a transparent way to measure each restaurant's environmental accomplishments, while providing a pathway for the next steps each restaurant can take towards increased environmental sustainability.

**Global Sustainability Communities of Interest** - New data interactive sharing initiative led by the Office of the Vice President for Research, Innovation, and Economic Development and a number of faculty members and researchers. It enables transdisciplinary collaborations with the goal of establishing new research activities and encouraging funded research of crucial issues that impact us all in the local, regional and global realms.

**HVAC** - Heating, ventilation, and air conditioning.

**Low Impact Design** - Refers to systems and practices that use or mimic natural processes that result in the infiltration, evapotranspiration or use of storm water to protect water quality and associated aquatic habitat.

**Midcontinent Independent System Operator, Inc.** - A not-for-profit, member-based organization that delivers electricity across high-voltage power lines in 15 U.S. states and the Canadian province of Manitoba. It conducts transmission planning, and manages the buying and selling of wholesale electricity in one of the world's largest energy markets.

**Non-point pollution** - Generally results from land runoff, precipitation, atmospheric deposition, drainage, seepage or hydrological modification. Unlike pollution from industrial and sewage treatment plants, it comes from many diffuse sources.

**Scope 1 Greenhouse Gas emissions** - Direct emissions from sources that are owned or controlled by the reporting entity.

**Scope 2 Greenhouse Gas emissions** - Indirect emissions from sources that are owned or controlled by the reporting entity from consumption of purchased electricity, heat or steam.

**Smart Growth** - An approach to development that encourages a mix of building types and uses, diverse housing and transportation options, development within existing neighborhoods, and community engagement.

**STARS** - The Sustainability Tracking, Assessment & Rating System™ is a transparent, self-reporting framework for colleges and universities to measure their sustainability performance. It is a program of the Association for the Advancement of Sustainability in Higher Education.

**STEP** - The Student Technology Enhancement Program maintains an abundance of valuable technological resources for the benefit of students. STEP maintains SMART classrooms and open-use labs throughout campus along with the accompanying software.

**Sustainability course** - A course in which the primary and explicit focus is on sustainability and/or on understanding or solving one or more major sustainability challenge.

**UNIV 100** - A 3 credit-hour, 15-week course designed to help first-year UL Lafayette students transition successfully from high school to university life and academic work. The course has two components: (1) Cajun Connection, which is an extended introduction to the campus community, and to university-level work and (2) the First-Year Seminar.

**WaterSense®-labeled** - An Environmental Protection Agency partnership program that labels products that have been independently certified to perform well, by helping to save water, energy, and money, and to encourage innovation in manufacturing.



# APPENDICES

## APPENDIX 2: CONTRIBUTORS AND REVIEWERS

### Office of the President

**E. Joseph Savoie Ed.D.**,  
President

**Liz Landry**, Assistant to  
the President and Director of  
Executive Office Operations and  
Events (Retired)

**Gretchen Vanicor**, Director,  
Office of Sustainability

**Monica Rowand**, Coordinator,  
Office of Sustainability

**Alyssa Favrot**, Graduate  
Assistant, Office of  
Sustainability

**Blair Begnaud**, Graduate  
Assistant, Office of  
Sustainability

**Lauren Lambert**,  
Graduate Assistant, Office of  
Sustainability

**Ivy Thibodeaux**, Student Aid,  
Office of Sustainability

**Victoria Tassin Frederic**,  
Student Aid, Office of  
Sustainability

**Benjamin Magallon**,  
Graduate Assistant, Office of  
Sustainability

**Bryan Maggard Ph.D.**,  
Director, Athletics Department

### Academic Affairs Division

**David Danahar, Ph.D.**,  
Interim Provost & Vice President  
for Academic Affairs (Retired)

**Ellen Cook, Ed.D.**, Assistant  
Vice President for Academic  
Affairs, Academic Resources  
(Retired)

**H. Gordon Brooks II, FAIA**,  
Dean, College of the Arts

**Jordan Kellman, Ph.D.**,  
Dean and Professor, College of  
the Liberal Arts

**Gail Poirrier, DNS, RNS**,  
Dean and Professor, College  
of Nursing and Allied Health  
Professions (Retired)

**Mark Zappi, Ph.D., PE**,  
Dean and Professor, College of  
Engineering, Director of the UL  
Energy Institute

**David Yarbrough, Ph.D.**,  
Dean and Professor, Office of  
Community Service

**Michael McClure**,  
Associate Dean, College of  
the Arts; Professor, School of  
Architecture and Design

**Vanessa Adamson**, Director,  
AmeriCorps

**Terrance Chambers, Ph.D.,  
PE**, Professor, College of  
Engineering; Director, Energy  
Efficiency and Sustainable  
Energy Center

**Jim Foret**, Instructor, School of  
Geosciences

**W. Geoff Gjertson**, Professor,  
School of Architecture and  
Design; Co-Director, Building  
Institute

**Raju Gottumukkala, Ph.D.**,  
Assistant Professor, College  
of Engineering; Director of  
Research, Informatics Research  
Institute

**G.H. Massiha, Ph.D.**,  
Professor, College of  
Engineering

**James McDonald, Ph.D.**,  
Professor, College of the  
Liberal Arts and Faculty Senate  
Representative

**Sara Ritchey, Ph.D.**,  
Associate Professor, College of  
Liberal Arts

**Tom Sammons**, Director  
and Professor, School of  
Architecture and Design;  
Director, Community Design  
Workshop

**Kari Smith, LEED AP**,  
Associate Professor, School  
of Architecture and Design;  
Coastal Community Resilience  
Studio Co-Director

**Douglas Williams, Ph.D.**,  
Director, Center for Innovative  
Learning and Assessment  
Technologies

### Administration and Finance Division

**Jerry Luke LeBlanc**, Vice  
President for Administration and  
Finance

**Gene Fields**, Chief Information  
Officer, Office of Information  
Technology

**Tom Pears**, Director, of  
Auxiliary Operations

**Bill Crist**, Director, Office of  
Facility Management

**Mike Hess**, Manager of  
Grounds, Office of Facility  
Management

**Terry Jenkins**, Manager of  
Environmental Systems, Office  
of Facility Management

**Joseph Pons, IV**, Associate  
Director of Public Safety, Risk  
Manager, Office of Facility  
Management

**Paul Thomas, SHRM-SCP,  
SPHR**, Chief Human Resources  
Officer, Human Resources

**Stuart Gleaser**, Director,  
Office of Transportation Services

**Jules Breaux**, Director,  
University Housing

**Ed Daugherty**, General  
Manager, Sodexo Dining

### Research Division

**Ramesh Kolluru, Ph. D.**,  
Vice President for Research,  
Innovation, and Economic  
Development

**Jack Damico, Ph. D.**  
**CCC-SLP**, Vice President  
for Research, Innovation,  
and Economic Development;  
Professor, College of Liberal  
Arts

**Abby Guillory**, Director, Office  
of Research and Sponsored  
Programs

**Jenneka Visser, Ph.D.**,  
Associate Professor, School of  
Geoscience; Associate Director,  
Institute for Coastal and Water  
Research

**Whitney Broussard, III,  
Ph. D., GISP**, Research  
Scientist, Institute for Coastal  
and Water Resources

### University Advancement Division

**John Blohm**, Vice President  
for University Advancement

**Aaron Martin**, Chief  
Communications Officer,  
Office of Communications and  
Marketing

**Kathleen Thames**,  
Editorial Director, Office of  
Communications and Marketing;  
Editor, La Louisiane

**Elizabeth Rose-Arcuri**, Web  
Content Strategist, Office of  
Communications and Marketing

**Claire St. Romain**, Director  
of Annual Giving, Office of  
Development

### Student Affairs Division

**Patricia Frilot Cottonham**,  
Vice President for Student  
Affairs

**Maylen Aldana, Ph.D.**,  
Director, Residential Life

**Jonathan Brown**,  
Area Coordinator, Residential  
Life

**Amy Chauvin**, Assistant  
Director, Career Planning and  
Placement Office

### Enrollment Management Division

**DeWayne Bowie, PhD, MBA**  
Vice President for Enrollment  
Management

**Maylen Aldana, Ph.D.**,  
Director, Residential Life

**Sammi Conner**, Director,  
Veteran Services



# APPENDICES

## APPENDIX 3: 2018-2019 MEMBERS OF THE PRESIDENT'S COUNCIL ON SUSTAINABILITY

**Vanessa Adamson**, Director, AmeriCorps

**Maylen Aldana, Ph.D.**, Director, Residential Life

**Blair Begnaud**, Graduate Assistant, Office of Sustainability

**Annie Briley, Ph.D.**, Marketing and Outreach Manager, B.I. Moody III College of Business Administration

**Sheryl Curry**, Assistant Dean of Technical Services & Special Collections, Edith Garland Dupré Library

**Bill Crist**, Director, Office of Facility Management

**Ed Daugherty**, General Manager, Sodexo Dining

**Erik Estrada**, Facilities Coordinator, Recreational Sports

**Gene Fields**, Chief Information Officer, Office of Information Technology

**Jim Foret**, Instructor, School of Geosciences

**Donna Gauthier, PhD, RN**, Associate Professor, College of Nursing & Allied Health Professions

**Geoff Gjertson**, Professor, School of Architecture and Design; Co-Director, Building Institute

**Stuart Gleaser**, Director, Office of Transportation Services

**Phyllis Baudoin Griffard, Ph.D.**, Chair, Master Instructor, Ray P. Authement College of Sciences

**Abby Guillory**, Director, Office of Research and Sponsored Programs

**Mike Hess**, Manager of Grounds, Office of Facility Management

**William Holmes**, Director of Process Analytics and Process Chemistry, Energy Institute of Louisiana

**Lauren Lambert**, Graduate Assistant, Office of Sustainability

**Jerry Luke LeBlanc**, Vice President for Administration and Finance

**Febbee Louka, Ph.D.**, Associate Professor, Ray P. Authement College of Sciences

**Dawn Miller**, Director, Student Union

**Michael McClure**, Associate Dean, College of the Arts; Professor, School of Architecture and Design

**Elizabeth Rose-Arcuri**, Web Content Strategist, Office of Communications and Marketing

**Monica Rowand**, Coordinator, Office of Sustainability

**Tom Sammons**, Director, Professor, School of Architecture and Design

**Liz Skilton, Ph.D.**, Assistant Professor, College of Liberal Arts

**Claire St. Romain**, Director of Annual Giving, Office of Development

**Rick Swanson, Ph.D.**, Associate Professor, College of Liberal Arts

**Gretchen Vanicor**, Director, Office of Sustainability

**Douglas Williams, Ph.D.**, Director, Center for Innovative Learning and Assessment Technologies

**David Yarbrough, Ph.D.**, Dean, Office of Community Service

## APPENDIX 4: 2017-2018 MEMBERS OF THE PRESIDENT'S COUNCIL ON SUSTAINABILITY

**Vanessa Adamson**, Director, AmeriCorps

**Maylen Aldana, Ph.D.**, Director, Residential Life

**Blair Begnaud**, Graduate Assistant, Office of Sustainability

**Amy Chauvin**, Assistant Director, Career Planning and Placement Office

**Sammi Conner**, Director, Veteran Services

**Sheryl Curry**, Assistant Dean of Technical Services & Special Collections, Edith Garland Dupré Library

**Bill Crist**, Director, Office of Facility Management

**Ed Daugherty**, General Manager, Sodexo Dining

**Gene Fields**, Chief Information Officer, Office of Information Technology

**Jim Foret**, Instructor, School of Geosciences

**Donna Gauthier, PhD, RN**, Associate Professor, College of Nursing & Allied Health Professions

**Geoff Gjertson**, Professor, School of Architecture and

Design; Co-Director, Building Institute

**Stuart Gleaser**, Director, Office of Transportation Services

**Abby Guillory**, Director, Office of Research and Sponsored Programs

**Mike Hess**, Manager of Grounds, Office of Facility Management

**Liz Landry**, Assistant to the President and Director of Executive Office Operations and Events (Retired)

**Lauren Lambert**, Graduate Assistant, Office of Sustainability

**Jerry Luke LeBlanc**, Vice President for Administration and Finance

**Febbee Louka, Ph.D.**, Associate Professor, Ray P. Authement College of Sciences

**G.H. Massiha, Ph.D.**, Professor, College of Engineering

**Michael McClure**, Associate Dean, College of the Arts; Professor, School of Architecture and Design

**Elizabeth Rose-Arcuri**, Web Content Strategist, Office of Communications and Marketing

**Tom Sammons**, Director, Professor, School of Architecture and Design

**Liz Skilton, Ph.D.**, Assistant Professor, College of Liberal Arts

**Kari Smith, LEED AP**, Associate Professor, School of Architecture and Design; Coastal Community Resilience Studio Co-Director

**Rick Swanson, Ph.D.**, Associate Professor, College of Liberal Arts

**Gretchen Vanicor**, Director, Office of Sustainability

**Douglas Williams, Ph.D.**, Director, Center for Innovative Learning and Assessment Technologies

**David Yarbrough, Ph.D.**, Dean, Office of Community Service



# APPENDICES

## APPENDIX 5: 2016-2017 MEMBERS OF THE PRESIDENT'S COUNCIL ON SUSTAINABILITY

**Vanessa Adamson**, Director, AmeriCorps

**Maylen Aldana, Ph.D.**, Director, Residential Life

**Whitney Broussard, III, Ph. D., GISP**, Research Scientist, Institute for Coastal and Water Resources

**Amy Chauvin**, Assistant Director, Career Planning and Placement Office

**Sammi Conner**, Director, Veteran Services

**Bill Crist**, Director, Office of Facility Management

**Ed Daugherty**, General Manager, Sodexo Dining

**Alyssa Favrot**, Graduate Assistant, Office of Sustainability

**Gene Fields**, Chief Information Officer, Office of Information Technology

**Jim Foret**, Instructor, School of Geosciences

**Geoff Gjertson**, Professor, School of Architecture and Design; Co-Director, Building Institute

**Stuart Gleaser**, Director, Office of Transportation Services

**Abby Guillory**, Director, Office of Research and Sponsored Programs

**Mike Hess**, Manager of Grounds, Office of Facility Management

**Lindsay Hobbs**, Instructor, Department of Communications

**Liz Landry**, Assistant to the President and Director of Executive Office Operations and Events

**Jerry Luke LeBlanc**, Vice President for Administration and Finance

**Febbee Louka, Ph.D.**, Associate Professor, Ray P. Authement College of Sciences

**G.H. Massiha, Ph.D.**, Professor, College of Engineering

**Michael McClure**, Associate Dean, College of the Arts; Professor, School of Architecture and Design

**Sharon Ridgeway, Ph.D.**, Associate Professor, College of Liberal Arts

**Sara Ritchey, Ph.D., Chair**, Associate Professor, College of Liberal Arts

**Elizabeth Rose-Arcuri**, Web Content Strategist, Office of Communications and Marketing

**Tom Sammons**, Director, Professor, School of Architecture and Design

**Kari Smith, LEED AP**, Associate Professor, School of Architecture and Design; Coastal Community Resilience Studio Co-Director

**Gretchen Vanicor**, Director, Office of Sustainability

**Jenneka Visser, Ph.D.**, Associate Professor, School of Geoscience; Associate Director, Institute for Coastal and Water Research

**Douglas Williams, Ph.D.**, Director, Center for Innovative Learning and Assessment Technologies

**David Yarbrough, Ph.D.**, Dean, Office of Community Service

## APPENDIX 6: FORMER MEMBERS OF THE PRESIDENT'S COUNCIL ON SUSTAINABILITY

**Dr. Griff Blakewood**, Professor, School of Geosciences; Faculty Advisor, SPEAK (Society for Peace, Environment, Action & Knowledge); (2011-2013)

**David Boulanger**, President, SPEAK (Society for Peace, Environment, Action & Knowledge); (2011-2012)

**Dr. Lisa Broussard, RN, DNS, CNE**, Department Dean, Associate to the Dean, College of Nursing and Allied Health Professions; (2011)

**Aimee Bullinger**, Website Developer, Office of Communications and Marketing; (2011-2014)

**Laura Bullinger**, Intern, Office of Sustainability; (2011)

**Dr. Paula Carson**, Assistant Vice President, Institutional Planning and Effectiveness; (2014)

**JoAnne DeRouen, Ph.D.**, Professor, Sociology; (2012-2014)

**Dr. Matthew Fadden**, Professor, Civil Engineering; (2013-2014)

**Julie Falgout**, President and CEO, UL Lafayette Foundation; (2011-2012)

**Keith Foreman**, Sodexo Dining Services; (2013-2014)

**Kennan Guillory**, Assistant Director, Office of Parking and Transit; (2011-2012)

**Jacques Henry, Ph.D.**, Professor, Sociology and Anthropology; (2011-2013)

**Jordan Jenkins**, Member, SPEAK (Society for Peace, Environment, Action & Knowledge); Intern, Office of Sustainability; (2013-2014)

**Lisa Landry**, Director of Residential Life, University Housing; (2011-2014)

**Andy Loewy**, Associate Professor, Industrial Design; (2011-2013)

**Benjamin Magallon**, Graduate Assistant, Office of Sustainability; (2013-2014)

**Beatrice Michot**, Research Associate, Civil Engineering; (2011)

**Dr. Thomas Michot**, Research Scientist, Institute for Coastal Ecology and Engineering; (2011-2012)

**Melissa Newell**, UL Dining Services; (2011-2012)

**Brooke Plaisance**, Member SGA (Student Government Association); Intern, Office of Sustainability; (2013-2014)

**Cian Robinson**, Associate Director, Center for Business and Information Technologies; (2013)

**Dr. Natalia Sidorovskaia**, Professor, Chairperson, Department of Physics; (2013-2014)

**Cheri Soileau**, Director, Office of Transportation Services; (2013-2014)

**Kylie Templet**, President, SGA (Student Government Association); (2011-2012)

**Karl Volkmar**, Associate Professor, Visual Arts; (2011-2014)





UNIVERSITY of  
**LOUISIANA**  
L A F A Y E T T E

Office of  
Sustainability

Office of Sustainability

Rougeou Hall 343

P.O. Box 43677, Lafayette, LA 70504

P: 337.482.0053 | [sustainability@louisiana.edu](mailto:sustainability@louisiana.edu)

[www.sustainability.louisiana.edu](http://www.sustainability.louisiana.edu)