

Symantec™ Ghost Solution Suite Web Console - Getting Started Guide



Symantec™ Ghost Solution Suite Web Console-Getting Started Guide

Documentation version: 3.3 RU3

Legal Notice

Copyright © 2019 Symantec Corporation. All rights reserved.

Symantec, the Symantec Logo, the Checkmark Logo are trademarks or registered trademarks of Symantec Corporation or its affiliates in the U.S. and other countries. Other names may be trademarks of their respective owners.

This Symantec product may contain third party software for which Symantec is required to provide attribution to the third party ("Third Party Programs"). Some of the Third Party Programs are available under open source or free software licenses. The License Agreement accompanying the Software does not alter any rights or obligations you may have under those open source or free software licenses. Please see the Third Party Legal Notice Appendix to this Documentation or TPIP ReadMe File accompanying this Symantec product for more information on the Third Party Programs.

The product described in this document is distributed under licenses restricting its use, copying, distribution, and decompilation/reverse engineering. No part of this document may be reproduced in any form by any means without prior written authorization of Symantec Corporation and its licensors, if any.

THE DOCUMENTATION IS PROVIDED "AS IS" AND ALL EXPRESS OR IMPLIED CONDITIONS, REPRESENTATIONS AND WARRANTIES, INCLUDING ANY IMPLIED WARRANTY OF MERCHANTABILITY, FITNESS FOR A PARTICULAR PURPOSE OR NON-INFRINGEMENT, ARE DISCLAIMED, EXCEPT TO THE EXTENT THAT SUCH DISCLAIMERS ARE HELD TO BE LEGALLY INVALID. SYMANTEC CORPORATION SHALL NOT BE LIABLE FOR INCIDENTAL OR CONSEQUENTIAL DAMAGES IN CONNECTION WITH THE FURNISHING, PERFORMANCE, OR USE OF THIS DOCUMENTATION. THE INFORMATION CONTAINED IN THIS DOCUMENTATION IS SUBJECT TO CHANGE WITHOUT NOTICE.

The Licensed Software and Documentation are deemed to be commercial computer software as defined in FAR 12.212 and subject to restricted rights as defined in FAR Section 52.227-19 "Commercial Computer Software - Restricted Rights" and DFARS 227.7202, et seq. "Commercial Computer Software and Commercial Computer Software Documentation," as applicable, and any successor regulations, whether delivered by Symantec as on premises or hosted services. Any use, modification, reproduction release, performance, display or disclosure of the Licensed Software and Documentation by the U.S. Government shall be solely in accordance with the terms of this Agreement.

Symantec Corporation
350 Ellis Street
Mountain View, CA 94043

<https://www.symantec.com>

Symantec Support

All support services will be delivered in accordance with your support agreement and the then-current Enterprise Technical Support policy.

Knowledge Base Articles and Symantec Connect

Before you contact Technical Support, you can find free content in our online Knowledge Base, which includes troubleshooting articles, how-to articles, alerts, and product manuals. In the search box of the following URL, type the name of your product:

<https://support.symantec.com>

Access our blogs and online forums to engage with other customers, partners, and Symantec employees on a wide range of topics at the following URL:

<https://www.symantec.com/connect>

Technical Support and Enterprise Customer Support

Symantec Support maintains support centers globally 24 hours a day, 7 days a week. Technical Support's primary role is to respond to specific queries about product features and functionality. Enterprise Customer Support assists with non-technical questions, such as license activation, software version upgrades, product access, and renewals.

For Symantec Support terms, conditions, policies, and other support information, see:

<https://entced.symantec.com/default/ent/supportref>

To contact Symantec Support, see:

https://support.symantec.com/en_US/contact-support.html

Symantec™ Ghost Solution Suite Web Console - Getting Started Guide

This document includes the following topics:

- [Introduction to Ghost Solution Suite Web Console](#)
- [Prerequisites for installing the Web Console](#)
- [Installing and upgrading to Ghost Solution Suite Web Console 3.3 RU3](#)
- [Ghost Solution Suite Web Console overview](#)
- [Scheduling a job from Ghost Solution Suite Web Console](#)
- [Moving computers using Ghost Solution Suite Web Console](#)
- [In Place Upgrade](#)
- [Performing In-Place upgrade on client computers](#)
- [Deploying an Image and configuring client computers](#)
- [Create Image Wizard](#)
- [Activity Summary](#)
- [Settings](#)

Introduction to Ghost Solution Suite Web Console

Ghost Solution Suite web console lets you move computers into groups, schedule jobs, view the activities that are performed on a computer and configure windows client computers.

See [“Ghost Solution Suite Web Console overview”](#) on page 18.

Prerequisites for installing the Web Console

Following are the prerequisites for installing Ghost Solution Suite Web Console:

- Ghost Solution Suite Server version 3.3 must be installed on the computer on which you want to install the Web Console.
- Supported operating systems:
 - Windows Server 2008 R2
 - Windows Server 2012
 - Windows Server 2012 R2
 - Windows Server 2016 Standard Edition

For the latest information related to supported operating system, refer to the [Platform support matrix](#).

- The install user should be a local administrator on the Ghost Solution Suite Server.
- IIS Server version 7.5 or higher must be installed.
IIS settings for Ghost Solution Suite Web console
- .NET framework 4.5.1 or later must be installed.
- Currently, it is recommended to use Ghost Solution Suite Web Console with the latest version of the following browsers:
 - Google Chrome browser
 - Microsoft Internet Explorer
 - Safari
 - Mozilla Firefox

IIS settings for Ghost Solution Suite Web console

IIS settings for Ghost Solution Suite Web console

This section lists the various IIS settings that are required for Ghost Solution Suite Web console.

Installing IIS Server and configuring the IIS components

To install IIS Server, refer to the following URL:

<https://docs.microsoft.com/>

Features and IIS Roles settings for Ghost Solution Suite Web Console:

Windows 2016 Server:

Following are the IIS roles that are required for installing Ghost Solution Suite Web Console on a Windows 2016 Server:

Select server roles

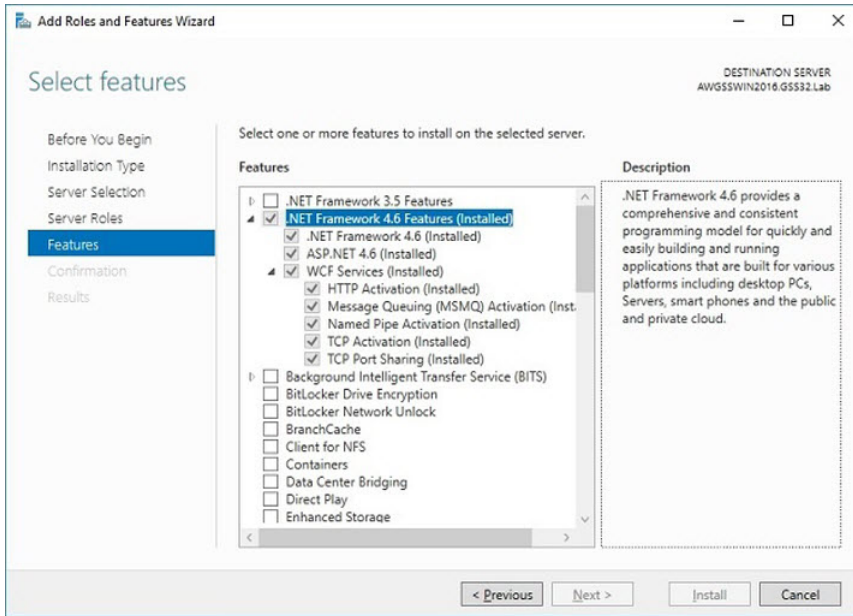
Before You Begin
Installation Type
Server Selection
Server Roles
Features
Confirmation
Results

Select one or more roles to install on the selected server.

Roles

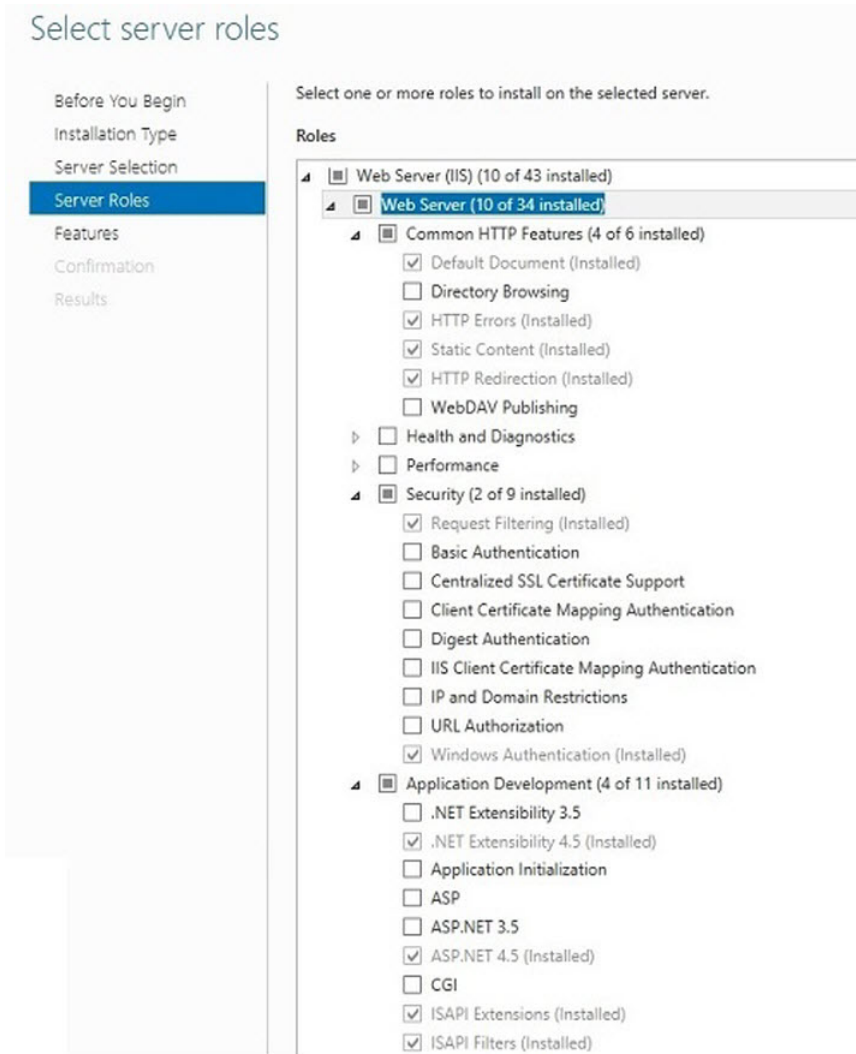
- Web Server (IIS) (10 of 43 installed)
 - Web Server (10 of 34 installed)
 - Common HTTP Features (4 of 6 installed)
 - Default Document (Installed)
 - Directory Browsing
 - HTTP Errors (Installed)
 - Static Content (Installed)
 - HTTP Redirection (Installed)
 - WebDAV Publishing
 - Health and Diagnostics
 - Performance
 - Security (2 of 9 installed)
 - Request Filtering (Installed)
 - Basic Authentication
 - Centralized SSL Certificate Support
 - Client Certificate Mapping Authentication
 - Digest Authentication
 - IIS Client Certificate Mapping Authentication
 - IP and Domain Restrictions
 - URL Authorization
 - Windows Authentication (Installed)
 - Application Development (4 of 11 installed)
 - .NET Extensibility 3.5
 - .NET Extensibility 4.6 (Installed)
 - Application Initialization
 - ASP
 - ASP.NET 3.5
 - ASP.NET 4.6 (Installed)
 - CGI
 - ISAPI Extensions (Installed)
 - ISAPI Filters (Installed)
 - Server Side Includes

Following are the features that are required for installing Ghost Solution Suite iPXE feature on a Windows 2016 Server:

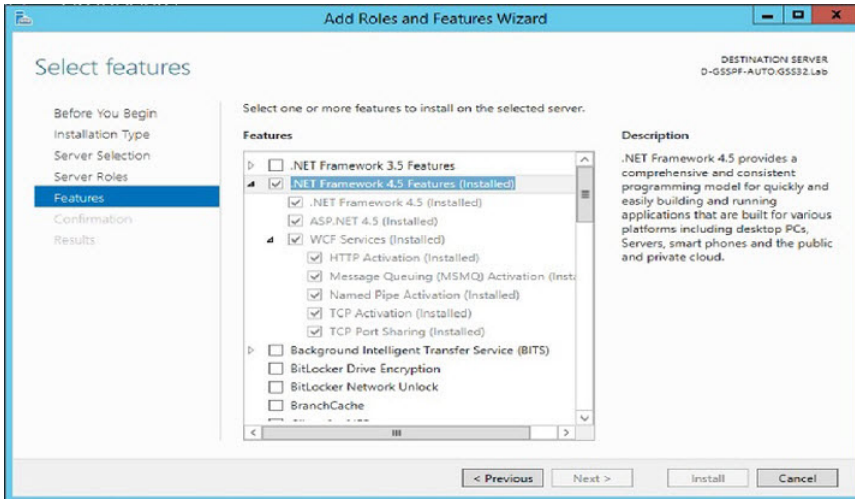


Windows 2012 R2 Server:

Following are the IIS roles that are required for installing Ghost Solution Suite Web Console on a Windows 2012 R2 Server:

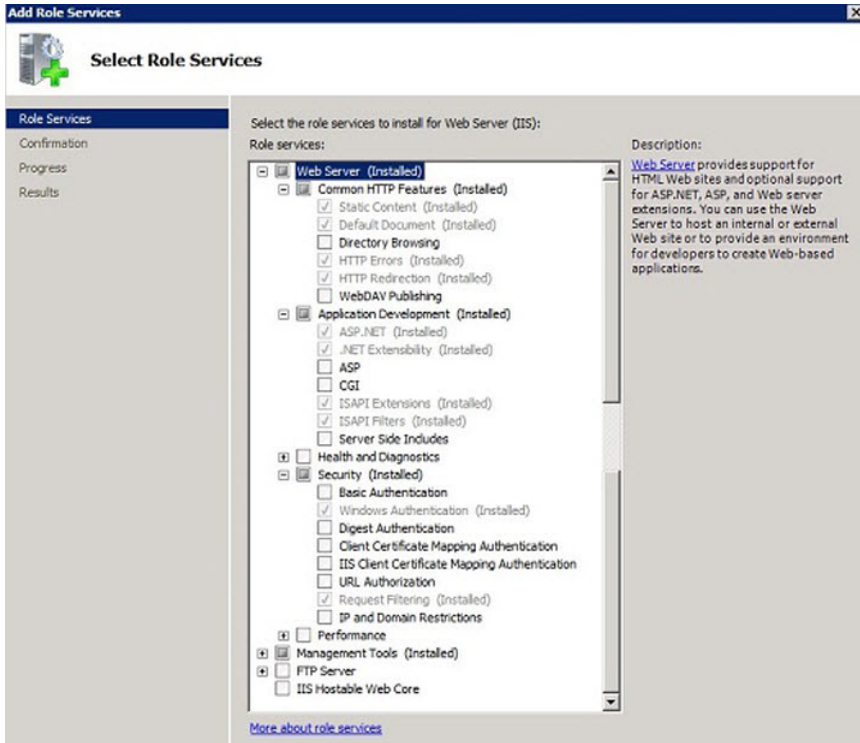


Following are the features required for installing Ghost Solution Suite Web Console on a Windows 2012 R2 Server:



Windows 2008 R2 Server:

Following are the features required for installing Ghost Solution Suite Web Console on a Windows 2008 R2 Server:



IIS settings that you may need to configure when you use NT authentication for database access.

IIS settings that you may need to configure when you use NT authentication for database access.

It is observed that in some cases data does not load in Ghost Solution Suite web console when NT authentication is used for database access.

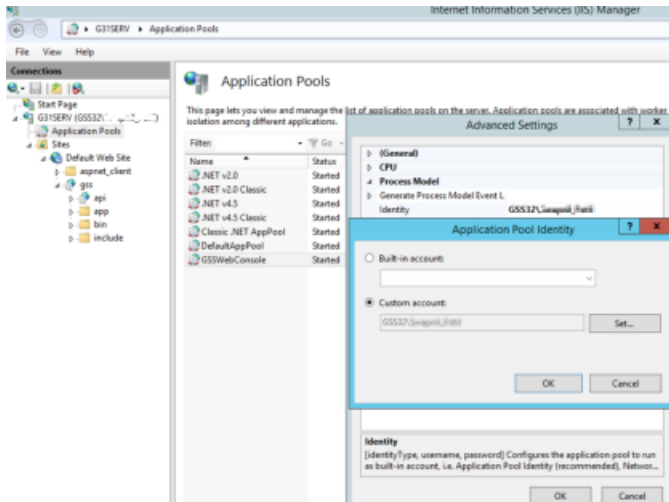
The following procedure lists the steps that you must follow when you have the following set-up:

- Ghost Solution Suite (GSS) 3.3 with the web console installed.
- Microsoft SQL configured with NT authentication (On-box and Off-box).

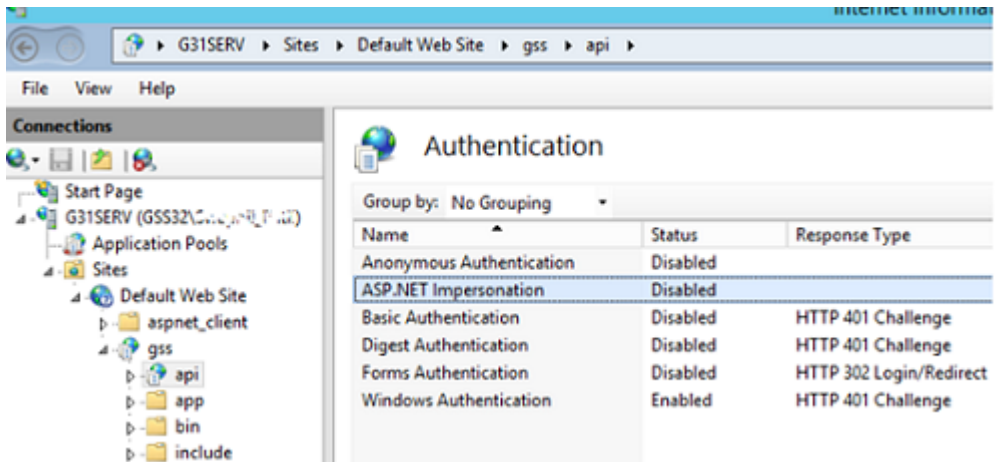
IIS configuration on Ghost Solution Suite Server with NT authentication for database access

- 1 Open IIS on the server where web console is installed (GSS server).
- 2 Navigate to **Application Pools > GSSWebConsole**.
- 3 Right-click on GSS WebConsole and select **Advanced Settings** option.
- 4 In the **Advanced Setting** option, select **Identity** under the **Process Model** tab.

- 5 Set the user for **Custom account** which has Database access.



- 6 Navigate to\\Sites\\Default Web Site\\gss\\api level in IIS.
- 7 Under **Authentication**, disable the ASP.NET Impersonation option for api.



- 8 Restart the IIS service.

- 9 Open the Internet browser and navigate to the webpage of your Ghost Console.
- 10 Log on to the web console from the Ghost Solution Suite server with an Admin user account.

Example:

```
http://localhost/gss/server.
```

Installing and upgrading to Ghost Solution Suite Web Console 3.3 RU3

You can install Ghost Solution Suite Web Console 3.3 RU3 over Ghost Solution Suite 3.3 and higher versions. The following table lists the supported installation and upgrade scenarios:

Table 1-1 Supported installation and upgrade scenarios for Ghost Solution Suite Web Console 3.3 RU3

Scenario	Supported installation or upgrade
Ghost Solution Suite Server 3.3 and higher (without Web Console installed).	Install Ghost Solution Suite Web Console 3.3 RU3. See “ Installing Ghost Solution Suite Web Console 3.3 RU3 ” on page 13.
Ghost Solution Suite Server 3.3 and higher (with Web Console installed).	Upgrade to Ghost Solution Suite Web Console 3.3 RU3. See “ Upgrading Ghost Solution Suite Web Console 3.3 RU3 ” on page 15.

Note: Ghost Solution Suite Web Console is supported for Ghost Solution Suite Server 3.3 and higher only.

Installing Ghost Solution Suite Web Console 3.3 RU3

- 1 Download the Ghost Solution Suite 3.3 RU3 from the following URL:
<https://mysymantec.force.com/customer/s/my-products>
Use the Ghost Solution Suite Serial number.
- 2 Right-click on the `Symantec_Ghost_Solution_Suite_3_3_RU3.exe` and select **Run as administrator**.
- 3 In the **Symantec Packager Self-Extracting Executable Options**, by default, the **Extract to a specific folder** option is selected.
- 4 Click **Extract and Execute App**.

- 5 In the **Ghost Solution Suite Install Configuration** wizard, select the type of installation that you want to carry out.
- 6 Click **Install**.
- 7 On the **Software License Agreement** page, click **Yes**.
- 8 On the **Ghost Solution Suite Share Information** page, select the **File server path**.
- 9 Browse and select the **License File** and click **Next**.
- 10 On the **Ghost Solution Suite Server Information** page, enter the **IP address** and the installation path of the Ghost Solution Suite Server.
- 11 Enter the credentials to connect to the Ghost Solution Suite Server and click **Next**.
- 12 In the **Ghost Solution Suite Database** page, select the **Database server** that you want to connect to and click **Next**.
- 13 On the **Ghost Solution Suite Web Console** page, click **Check Prerequisites** before you proceed with installing the Web Console component.

Note: You can also install the Web Console component later using the **Component Install** option.

- 14 After all the prerequisites are met, select **Install Ghost Solution Suite Web Console** option and enter the credentials to set up access from IIS to the Database Server.

User Name	Enter the user name of a Windows account user with access to the database.
Password	Enter the password for the user name. Note: If the password for AppID expires due to policies, use the AppID Password Reset Utility to reset the password. See "To reset an AppID password in plain text on Ghost Solution Suite Server" on page 16.
Confirm Password	Enter the password again.

- 15 Click **Next**.
- 16 Click **Finish**.

You can view the installation logs at the following location:

- Installed at the default location
`C:\express\Deployment Server\GSSWebConsole_Install_success_{Date_Time}.log`

```
C:\eXpress\Deployment Server\GSSWebConsole_Install_fail_{Date_Time}.log
```

- **Installed at a non-default location**

```
<Install_Dir>\GSSWebConsole_Install_success_{Date_Time}.log
```

```
<Install_Dir>\GSSWebConsole_Install_fail_{Date_Time}.log
```

Upgrading Ghost Solution Suite Web Console 3.3 RU3

- 1 Download the Ghost Solution Suite 3.3 RU3 from the following URL:

<https://mysymantec.force.com/customer/s/my-products>

Use the Ghost Solution Suite Serial number.

- 2 Right-click on the `Symantec_Ghost_Solution_Suite_3_3_RU3.exe` and select **Run as administrator**.
- 3 In the **Symantec Packager Self-Extracting Executable Options**, by default, the **Extract to a specific folder** option is selected.
- 4 Click **Extract and Execute App**.
- 5 In the **Ghost Solution Suite Install Configuration** wizard, select the component install that you want to carry out.
- 6 Click **Install**.
- 7 On the **Software License Agreement** page, click **Yes**.
- 8 On the **Ghost Solution Suite Share Information** page, select the **File server path**.
- 9 Click **Next** if a valid license exists.
- 10 On the **Ghost Solution Suite Server Information** page, enter the **IP address** and the installation path of the Ghost Solution Suite Server.
- 11 Enter the credentials to connect to the Ghost Solution Suite Server and click **Next**.
- 12 In the **Ghost Solution Suite Database** page, select the **Database server** that you want to connect to and click **Next**.
- 13 On the **Ghost Solution Suite Web Console** page, click **Check Prerequisites** before you proceed with upgrading the Web Console component.

- 14 Select **Install Ghost Solution Suite Web Console** option and enter the credentials to set up access from IIS to the Database Server.

User Name	Enter the user name of a Windows account user with access to the database.
Password	Enter the password for the user name. Note: If the password for AppID expires due to policies, use the AppID Password Reset Utility to reset the password. See “To reset an AppID password in plain text on Ghost Solution Suite Server” on page 16.
Confirm Password	Enter the password again.

- 15 Click **Next**.

- 16 Click **Finish**.

AppID Password Reset Utility

The AppID Password Reset Utility is a tool that lets you reset passwords for AppID users. You can use this utility after you have installed the Web Console. To launch the tool, navigate the following location:

```
<Installed Directory>\GSSWebConsoleChangeAppIdentity.exe
```

You can reset the AppID password in any of the following ways:

- Reset password in plain text.
See [“To reset an AppID password in plain text on Ghost Solution Suite Server”](#) on page 16.
- Reset encrypted password.
Encrypted password is useful when you want to reset the AppID password on the Ghost Solution Suite Servers remotely.
See [“To reset an AppID encrypted password”](#) on page 17.

To reset an AppID password in plain text on Ghost Solution Suite Server

- 1 In the command prompt window, launch the GSSWebConsoleChangeAppIdentity.exe.
- 2 Enter the following command:

```
GSSWebConsoleChangeAppIdentity.exe /set /u:<username> /p:<plaintext_pwd>
```

You can reset AppID password for remote Ghost Solution Suite Server remotely by running a Run Script task on the GSS Servers remotely.

To reset an AppID encrypted password

- 1 In the command prompt window, launch the GSSWebConsoleChangeAppIdentity.exe.
- 2 Enter the following command:

```
GSSWebConsoleChangeAppIdentity.exe /encrypt /p:<plaintext_pwd>
```

- 3 The encrypted password is displayed.

For example:

```
A6294E98C322622844976CDECA487094
```

```
Successful!
```

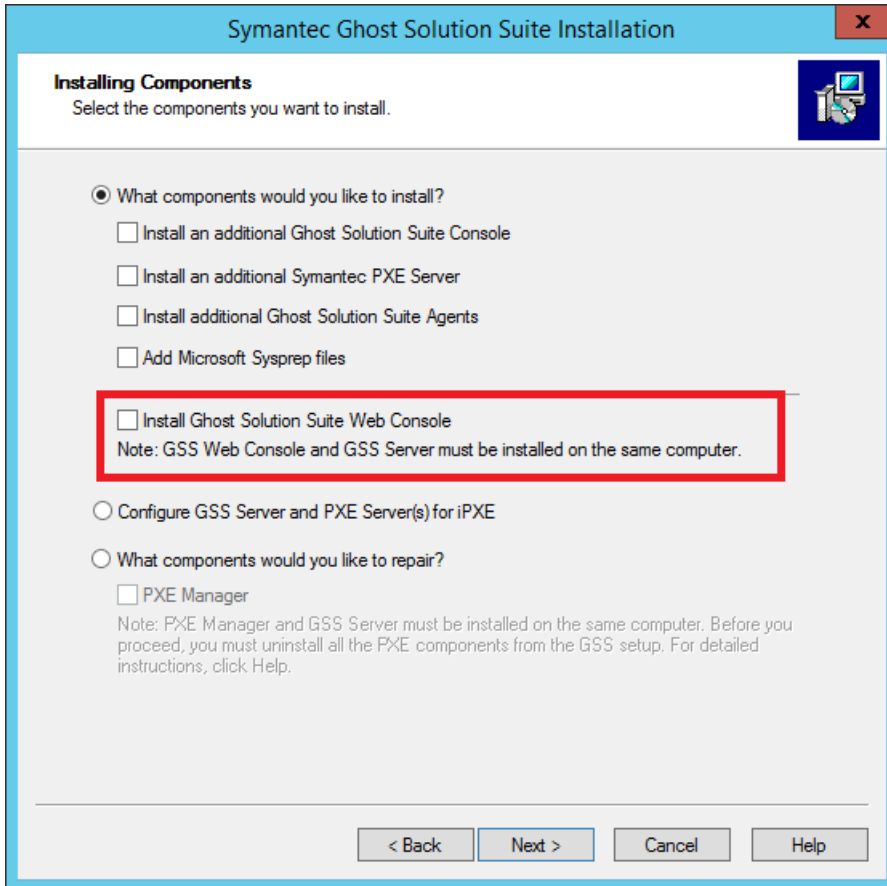
- 4 Now, run the following command and set the encrypted password as follows:

```
GSSWebConsoleChangeAppIdentity.exe /set /u:Administrator /e:<encrypted_pwd>
```

Component install

The component install option lets you add selected Ghost Solution Suite Server Components - Ghost Solution Suite Console, PXE Server, and Ghost Solution Suite Agents to the existing eXpress Share.

On the **Installing Components** page, select the option **Install Ghost Solution Suite Web Console**.



Ghost Solution Suite Web Console overview

The Ghost Solution Suite Web Console is a portal that multiple administrators can access from different browsers and computers at the same time.

To access the console, open the internet browser and enter the following:

`http://<IP address of Ghost Solution Suite Server>/gss/`

The portal consists of the following menus:

- Home Page
- Quick Tasks
- Activity Summary

- Settings

Home Page

The Home page or the landing page of the Web Console lets you access all the computers and computer groups, Jobs and Folders. You can view the computer details and schedule a job for a computer or a computer group. To see the details of the Home page, refer to the following image:

The screenshot displays the Symantec Ghost Solution Suite Web Console interface. The top navigation bar includes the Symantec logo and the text 'Symantec Ghost Solution Suite'. The main content area is divided into several sections:

- Computers and Groups:** A sidebar on the left lists various computer groups, including 'GWIN7-X64', 'GWIN81-X64', 'GWIN81-X86', 'RHEL65', and 'WIN-LNQL594USPC'. The 'GWIN7-X64' group is highlighted with a red box.
- Computer Details:** A large panel on the right shows details for the selected computer group, 'GWIN7-X64'. It displays the operating system as 'Windows 7 Enterprise 6.1.7601 (Service Pack 1)' and includes a 'Schedule Job' button.
- Jobs:** A section below the computer details shows a search bar and a table of scheduled jobs. The search bar is also highlighted with a red box.

JOB NAME	JOB FOLDER	SCHEDULED AT	STATUS
DeployImageBackup64	AlterUpgrade	2018-09-28 20:38:03	Configuration process complete
CreateImage64Back	AlterUpgrade	2018-09-28 12:54:41	Imaging process complete
Wait	Jobs\IFS	2018-09-28 11:58:47	Wait task completed successfully.
DistributePersonalityIFS	Jobs\IFS	2018-09-28 11:55:05	Package installation complete

[Home](#)

Quick Tasks

The Quick Tasks are categorized into Quicks tasks and Admin Quick Tasks.

Quick Task includes the following menus:

- **Schedule Job**
- **Move Computer**

Admin Quick Tasks includes the following menus:

- **In Place Upgrade**
- **Create Image**
- **Deploy an Image**

Activity Summary

This page shows the Ghost Solution Suite activity log. You can select and rerun a task from the list.

Settings

The **Settings** page, lets you set default options to be used when you create and deploy an image on the client computer.

For example: Default command line for Create Image and Deploy Image tasks, default option to boot computers into preboot environment.

Home

The Home page is the landing page of Ghost Solution Suite Web Console.

To launch the web console, in an Internet browser, enter the following:

```
http://<IP address of Ghost Solution Suite Server>/gss/
```

The Home page is distributed into two sections:

- Computers and Groups
- Jobs and Folders

Computers and Groups

In this pane, all the computers and group of computers are listed. To view the details of a computer or a group, select the computer or the computer group. After you select a computer or a computer group, following details are displayed in the right pane of the Web Console:

Table 1-2 Computer details

Field	Description
NAME	Name of the computer. The computer icons represent the various states of the computers. For details, refer to the following: Computer icons and statuses
FULL QUALIFIED NAME	Name of the computer.
OPERATING SYSTEM	The details of the operating system that is installed on the computer.
MAC ADDRESS	Displays the MAC address of the computer.
IP ADDRESS	Displays the IP address of the computer.

Table 1-2 Computer details (*continued*)

Field	Description
Schedule Job	Click on Schedule Job to schedule a job on a computer or a group of computers.

Table 1-3 Computer inventory details-Jobs tab

Field	Description
JOB NAME	Name of the job.
JOB FOLDER	Name of the folder in which the job is present.
SCHEDULED AT	The date and the time on which the job is scheduled.
STATUS	The status of the job.

Table 1-4 Computer inventory details-Agent tab

Field	Description
Logged On User	Name and hierarchy of the logged on user.
Automation Folder Installed	Displays if the automation folder is installed or not.
Windows Agent Version	Displays the Windows agent version.
Agent ID	Displays the Ghost Solution Server agent version.
User Account Control	Displays the status if User Account Control is turned on.

Table 1-5 Computer inventory details Hardware tab - Summary

Field	Description
Computer Manufacturer	Displays the name of the manufacturer.
Model	Displays the model of the computer.
Product Name	Displays the product name.
Display	Displays the Display settings of the computer.
Serial Number	Displays the Serial number of the computer.
Asset Tag	Displays the Asset tag of the computer.
UUID	Displays the UUID number of the computer.

Table 1-5 Computer inventory details Hardware tab - Summary (*continued*)

Field	Description
Bios Version	Displays the BIOS version of the computer.
Bios Release Date	Displays the BIOS release date of the computer.
Firmware Type	Displays the Firmware type of the computer.

Table 1-6 Computer inventory details-Software tab

Field	Description
Name	Displays the name of the software.
Publisher	Displays the name of the publisher of the software.
Version	Displays the version of the software.

Computer icons and statuses

Table 1-7 Computer icons and statuses







Computer icon	Computer state
	The computer is in On state.
	The computer is in Off state.
	The computer is in On state and the user is logged in.
	The computer is booted in the preboot environment.
	Linux computer is in On state.

Table 1-7 Computer icons and statuses (*continued*)

Computer icon	Computer state
	Linux computer is in Off state.

Jobs and Folders

You can view the list of all the jobs and job folders that are created. Following details are displayed when you click on a job or a job folder:

Table 1-8 Jobs and Folders

Field	Description
NAME	Displays the name of the job.
TASK	Displays the names of the tasks that are part of the job.
DETAILS	Displays the details of the task, For example: For a Capture Personality task, the PBT file path is displayed.
Schedule Job	This option lets you schedule the selected the job.
Search	Enter the search criteria for the client computer.
COMPUTER	Displays the name of the computers on which the job was scheduled.
GROUP	Displays the group of the computers.
SCHEDULED AT	Displays the details of the job schedule.
STATUS	Job status on the computer.

Scheduling a job from Ghost Solution Suite Web Console

You can schedule jobs from the Ghost Solution Suite Web Console using the **Quick Tasks** menu.

To schedule a job from Ghost Solution Suite Web Console

- 1 Launch a browser and enter the following:
`http://<IP address of Ghost Solution Suite Server>/gss/`
- 2 Enter the credentials to log on.
- 3 From the menu, select **Quick Tasks**.
- 4 In the right pane, select **Schedule Job**.
- 5 On the **Schedule Jobs - Select Jobs** page, select the jobs that you want to schedule and click **Next**.
- 6 On the **Schedule Jobs - select endpoints** page, select the computers and groups on which you want to schedule the job.
- 7 On the **Schedule job - Run** page, set the schedule for the job.
The **Summary** section of the **Schedule job - Run** displays the details of the job and the computers.
- 8 Click **Run**.

Moving computers using Ghost Solution Suite Web Console

You can move computers between groups using Ghost Solution Suite.

To move computers using Ghost Solution Suite Web Console

- 1 Launch a browser and enter the following:
`http://<IP address of Ghost Solution Suite Server>/gss/`
- 2 Enter the credentials to log on.
- 3 From the menu, select **Quick Tasks**.
- 4 In the right pane, select **Move Computer**.
- 5 On the **Move Computers - Select source computers and groups** page, select the computers and computer groups that you want to move to another group.
- 6 Click **Next**.
- 7 On the **Move Computers - Select target group**, select the target group to which you want to move the selected computers and groups.
- 8 Click **Next**.
- 9 On the **Move Computers - Summary** page, click **Move**.

In Place Upgrade

This job lets you perform an In-Place upgrade from Windows 7, Windows 8.1, and Windows 10 operating system to Windows 10 1607 (Redstone 1) version or higher.

Note: Windows setup.exe should not be blocked by Antivirus on the client computer.

For more details, refer to the following topics:

[Performing In-Place upgrade on client computers](#)

Performing In-Place upgrade on client computers

The In-place upgrade task wizard lets you upgrade client computers from any of the following operating systems to Windows 10 1607 (Redstone 1) version or higher:

- Windows 7
- Windows 8.1
- Windows 10

Note: Ensure that the setup.exe is not blocked by the antivirus software installed in your network.

Performing in-place upgrade on client computers

- 1 Launch the Gost Solution Suite web console.

`http://<IP_address of GSS Server>/gss/`

- 2 In the **Quick Task > Admin Quick Tasks** menu, select **In Place Upgrade** task.

3 In the **In Place Upgrade - Job**, enter the following details:

Name	Enter a name for the job. A job with the provided name is created in the following path: WebConsole\QuickTasks\InPlaceUpgrades
Description	Enter a description for the job.
Setup.exe path	Enter the path to the Windows setup file. Ensure that the location must be accessible on the computer that you want to upgrade.
Product Key	Enter the product key of the operating system.
Username	Enter the username of the administrator. Note: You must run the job as an Administrator user of the client computer.
Password	Enter the password.
Would you like to schedule this job now?	Select this option if you want to schedule the In Place Upgrade job.

4 If you do not want to schedule the job right away, click **Create**. The job is saved in the Jobs and tasks folder.

If you choose to schedule the job, click **Next**.

See [“Scheduling a job from Ghost Solution Suite Web Console”](#) on page 23.

Deploying an Image and configuring client computers

The Deploy Image wizard, lets you configure the **Deploy Image** task and lets you run post deployment tasks such as **Run Script** and **Install Software** task.

Before you start with the wizard, check the **Settings** page. You can configure the default settings for the **Deploy Image** task from the **Settings** page.

Deploying an Image and configuring client computers

1 Launch the Ghost Solution Suite web console.

```
<IP address of Ghost Solution Suite Server>/gss
```

2 In the Ghost Solution Suite web console, navigate to **Job Creation Wizards** and select **Deploy Image**.

3 In the **Deploy Image-Introduction** page, enter the following fields:

Job Name	Enter the name of the job.
Job Description	Enter the description of the job.

4 Click **Next**.

5 In the **Deploy Image-Image Details** page, enter the details in the following fields:

Image File	Select the Ghost image that you want to deploy on the client computer. Ensure that the image file path is accessible from the client computer.
Advanced Options	The default command line is displayed based on the configuration in the Settings page.
Ghost Command Line	
Image created using Sysprep	Select this option if the image is created using Sysprep.

6 Click **Next**.

7 On the **Deploy Image - Deploy Option** page, enter the details in the following fields:

Select the mode to boot client computers into preboot environment Select if you want to boot the client computers into preboot environment using the following options:

- **Use Existing Automation Folder**
Uses the automation folder that is installed on the client computer.
- **Install specific Automation Folder**
Uses the specified automation folder.
- **PXE Package**
Uses the selected PXE package

You can set the default option from the **Settings** page.

Configure the option to copy drivers for hardware independent imaging You can select the location of the drivers for hardware independent imaging from any of the following:

- **Use Driver Repository (coming soon)**
This option will be available in future release.
- **Use Deploy Anywhere**
- **Use Custom Script**

You can set the default option from the **Settings** page.

Set the disk wipe preference

Configure the disk wipe preference from any of the following options:

- **Use Default**
- **Use Custom Script**

You can set the default option from the **Settings** page.

- 8 Click **Next**.
- 9 In the **Deploy Image-Actions** page, select **Would you like to add additional actions after deployment?** if you want to run any of the following tasks:

- **Run Script**

If you select to add a **Run Script** task, enter the following details and click **Add**:

Description	Enter the description of the task.
Script Details	Specify the script details. You can browse to a script file. Following file types are supported: .bat, .cmd, .wsf, .vbs, .vbe, and .ps1. You can also specify the Script text in the provided in the script box.
Additional command-line switches	Enter the command line switches that you want to run.
Operating system	Select the operating system on which you want to run the Run Script task.
Run Script Location	Select if you want to run the Run Script task on the client computer or locally on the Ghost Solution Suite server. You can also select if you can run the script on the Ghost Solution Suite server when the agent is connected to the server.

Client Run Environment

Specify the security context to run the script.
You can select either of the following:

- **Production environment**
 - **Local System Administrator (Default)**
 - **Logged in user**
 - **Specific User**

Specify the **Username** and the **Password**

- **Preboot environment**

Select the preboot environment in which the client computer should run the script.

Restart the computer after the task is complete

Select if the computer should restart after the run script task is complete.

- **Install Software**

If you select to add **Install Software** task, enter the following details and click **Add**:

Description

Enter the description for the task.

Package Details

Enter the details of the software package that you want to install on the computer.

- **Type**

Enter the type of the software package.

Following types of files are supported:

.exe .cab .msi .bin .gz .tar .tgz .bz2 .shar
.deb .pkg .fsl .pbt .vsa .rpm

- **Name**

Select the software name.

- **Command line Switches**

Enter the command line switches for the task.

- **Run Package from Repository**

Select if the software package should run from the repository.

- **Copy package to the client computer**

Select this option if the software package should be copied on the client computer before it is installed. You can select from the following:

- **Include files from directory**

Select if the all the files that are present at the directory level should be copied.

- **Include files from sub-directory**

Select if the files that are present in subdirectory level should be copied on the client computer.

Security Context

Specify the security context to run the software package on the client computer.

- **Logged in user**

Select if the software package should be run with the logged on user.

- **Specify User**

Select this option if you want to install the software package for a specific user.

- **Username**

Enter the user name.

- **Password**

Enter the password for the specific user.

Restart the computer after the task is complete

Select if you want to restart the computer after the software is installed on the client computer.

- 10 After you select and configure the post deployment tasks, click **Next**.
- 11 On the Deploy and Configure- Summary page, review the job details and click **Submit**.

Create Image Wizard

The **Create Image** wizard, lets you create a job to capture a computer image.

The following procedure lists the steps that you must follow to create a **Create Image** job.

Configuring a Create Image job

- 1 Launch the Ghost Solution Suite web console.

<IP address of Ghost Solution Suite Server>/gss

- 2 In the Ghost Solution Suite web console, navigate to **Job Creation Wizards** and select **Create Image**.

- 3 In the **Create Image - Introduction** page, enter the following details:

Job Name Enter the name for the job.

Job Description Enter the job description.

- 4 Click **Next**.

5 In the **Create Image - Image Details** page, enter the following details:

Image Repository- Image	Browse and select the folder where you want to store the image and enter the image name. For more information, refer to the table.
Custom Path- Image	Select this option if you want to specify the custom path. Ensure that the path is accessible from the client computers.
Ghost Command Line	Enter the Ghost Command to create and image.
Select this option if you want to create the image using Microsoft Sysprep	Select this option if you want to create the image using Microsoft Sysprep.
Image name	Enter the name of the image.
Select this option if you want to execute this Job on multiple computers	Select this option if you want to run the task on multiple computers.
OS Details - Name	Select the operating system.
License Key	Select the License Key for the operating system.
Security Context- Username	Enter the administrator credentials of the target computer on which you want to run the Sysprep utility.
Password	Enter password.
Confirm Password	Enter the password again.

6 Click **Next**.

7 In the **Create Image- Additional Settings** page, enter the following details:

Use Existing Automation Folder.	Select this option to boot the computer in the preboot environment using the automation folder that is present on the target computer.
Install specific Automation Folder	Select this option to boot the computer in the preboot environment using the automation folder that is set in the task. The automation folder is first installed on the computer and then boots into the preboot environment.
PXEPackage	Select the PXE package to boot the computer into preboot environment.
Compression level None	Select this option if you do not want to specify the compression level.
Optimize for Speed	Select this option to create a larger compressed image file with a faster imaging time.
Optimize for Size	Select this option to compress the image to the smallest file size.
Balanced for size and speed	Select this option to compress the image with balanced for size as well as speed.

8 Click **Next**.

9 In the **Create Image - Summary** page, you can view the details of all the configurations that you have set in the **Create Image** wizard.


10 Click **Submit**.

Activity Summary

The Activity Summary page displays all the tasks that are scheduled on the Ghost Solution Suite Server.

The following table lists the options of the **Activity Summary** page:

Table 1-9 Activity Summary

Field	Description
Search	You can search for a job, computer name or job status.
Refresh	Click on Refresh icon to display the latest activity summary.
Export	<p>Click on the Export icon to generate .xls report of the activity summary report.</p> <p>You can export the activity summary report based on following criteria:</p> <ul style="list-style-type: none"> ■ Last 7 Days Generates the activity summary report of last seven days. ■ Last 1 Month Generates the activity summary report of last one month. ■ Date Range Generates report for the specified date range.
JOB NAME	Displays the job name
COMPUTER NAME	Displays the name of the computer on which the job is run.
JOB STATUS	Displays the status of the job.
START TIME	Displays the start time of the job.
END TIME	Displays the end time of the job.
EXECUTION TIME	Displays the duration of the job.
 RERUN	<p>Hover the mouse pointer to the right end of any row of the Activity Summary to show the Rerun icon.</p> <p>Click Rerun to schedule the job again on the computer.</p>

Settings

In Ghost Solution Suite Web Console Settings page, you can set the following parameters which affect the options that are available in the tasks that are configured from the Web Console:

- Maximum number of computers on which a job can be scheduled.

- Default Ghost Command line for Create Image and Deploy Image task.
- Default option to boot a client computer in preboot environment.
- Default location to copy drivers for Hardware Independent Imaging

The following table lists the options of the Settings page:

Table 1-10 Settings



Field	Description
 Expand All	Use the Expand All option to expand all the configuration option of the Settings page.
 Collapse All	Use the Collapse All option to collapse all the configuration options of the Settings page.
Maximum number of computers	Set the maximum number of computers on which you can run a job that is scheduled from the Web Console. By default, it is set to 50 computers.
Create Image Command	Specify the default Command line option that is used for the Create Image task. By default, it is set as follows: <code>-clone,mode=create,src=1,dst=%IMAGE_FILENAME% -sure -z1</code>
Deploy Image Command	Specify the default Command line option that is used for the Deploy Image task. By default, it is set as follows: <code>-clone,mode=restore,src=%IMAGE_FILENAME%,dst=1 -sure</code>

Table 1-10 Settings (continued)

Field	Description
Set the default option for booting a computer into preboot environment	<p>You can configure the option for booting a client computer into preboot environment. You can set the following:</p> <ul style="list-style-type: none">■ Configure while creating a job If you select this option, you must select the preboot environment when you configure the Deploy Image task.■ Automation Folder The selected automation folder is used to boot the client computers in preboot environment when a job is scheduled.■ PXE package The selected PXE package is used to boot the client computers in preboot environment when a job is scheduled. <p>By default, Configure while creating a job is selected.</p>
Select the default location to copy drivers from for Hardware Independent Imaging	<p>Set the default location to copy drivers for hardware independent imaging. You can select from the following:</p> <ul style="list-style-type: none">■ Configure while creating a job If you select this option, you must specify the driver location when you create the job.■ Use Driver Repository (coming soon) This option will be available in future release.■ Use Deploy Anywhere The drivers are copied from the Deploy Anywhere.■ Use Custom Script Drivers are copied from the specified script. <p>By default the Use Driver Repository is selected.</p>

Table 1-10 Settings (continued)

Field	Description
Configure disk wiping before Image Deployment	<p>Set the disk wiping preference before deploying an image. You can select from the following:</p> <ul style="list-style-type: none">■ Configure while creating a job If you select this option, you must specify the details to wipe the disk when you create the Deploy Image task.■ Use Ghost Solution Suite default settings Ghost Solution Suite default settings are used to wipe the disk of the client computer.■ Use custom script Specify a script to wipe the disk of the client computer before deploying an image. <p>By default, the option Use Ghost Solution Suite default settings is selected.</p>
Enter the credentials of a user with read level access to the Active Directory	Enter the user name and password of a user with read level access to the Active Directory.