

SYSTEMS DESIGNED WITH YOUR **SAFETY** IN MIND

STEEL | STUDIO

BALUSTRADES

STAIRCASES

POOL ENCLOSURES

WHO IS STEEL STUDIO?



Steel Studio are manufacturers and installers of **Balustrades, Staircases and Pool Enclosures** for both, **Commercial and Residential projects**.



WHO IS STEEL STUDIO?



We are **experts in our field** and opinion leaders regarding safety and compliance.



OUR MISSION STATEMENT



CUSTOMERS

We will **consistently and passionately** go the extra mile for our customers.



PEOPLE

Our people are our business and we will continuously **invest in their growth** and skills development.



QUALITY AND COMPLIANCE

We will continually strive to be the **thought leaders and front-runners** in regards to SANS compliance. We will constantly improve our product offering and quality workmanship by developing cutting edge technologies.



PRICE

Our prices will always be **fair and competitive**.

WHO IS STEEL STUDIO?



We have developed the recipe to produce a range of products that are **fully compliant while maintaining visually appealing**, custom aesthetic designs.

WHO IS STEEL STUDIO?



Steel Studio has been
in existence for almost
30 years



Staff compliment
of over **200**



32 Qualified
installation teams



MANAGEMENT TEAM



Our collective **management team** has several years of experience in the stainless steel, glass and construction industries.



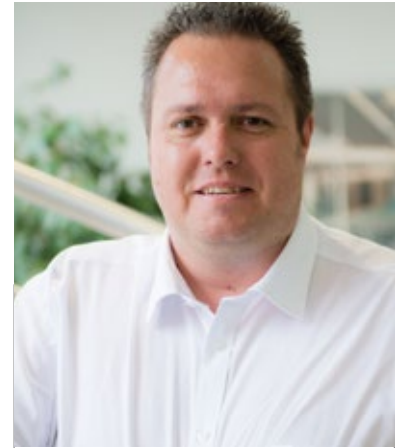
Dave



Frans



Andre



Johan



SAFETY OFFICERS



Our full time, in-house health and safety officers enable us to ensure that all of our projects are in compliance with all of the **health and safety standards** required by law.



Freddy



Henry

WHO IS STEEL STUDIO?



We have clearly defined **Commercial and Residential** sales and installation divisions.



TESTING AND APPROVAL



All of our systems are tested and approved by a professional structural engineer, in accordance with **SANS** deemed to satisfy requirements.

Steel Studio has it's own **testing facility** to enable testing of all balustrade systems under the supervision of a professional structural engineer.

▶ *Safety comes
Standard*

CARBON FOOTPRINT



We are concerned about our impact on our surroundings and we are constantly looking to reduce our carbon footprint. All of our stainless steel is **100% recyclable and recycled materials** are used in the production of stainless steel raw material.

Our stainless steel is manufactured following strict environmental **guidelines and principles** to ensure the wellbeing of our environment.



We are **BBBEE Compliant** under the latest Construction Codes



PLATINUM VERIFICATIONS

GENERIC SCORECARD VERIFICATION CERTIFICATE

NEW STEEL STUDIO INTERNATIONAL (PTY) LTD
1 Capeton Road, Lindero Business Park, Sandton, 2054
 Reg No: 2051753530/07, VAT No: 406212057

B-BBEE PROCUREMENT RECOGNITION LEVEL: 10%

BEE STATUS: LEVEL 8


ELEMENT	SCORE ACHIEVED	ANALYSIS	RESULTS
Ownership	00.00	≥51% Black Owned	No
Management Control	07.33	Black Ownership Percentage	0%
Skills Development	16.18	≥30% Black Women Owned	No
Preferential Procurement and Supplier Development	27.89	Black Women Percentage	0%
Socio-Economic Development	04.00	Modified Flow-Through Applied	No
TOTAL POINTS	55.40	Certificate Number	APV5501725
Empowering Supplier	Yes	Issue Date	13 June 2018
Black Designated Group Supplier	No	Re - Issue Date	05 December 2018
All Priority Elements Achieved	No	Expiry Date	12 June 2019

This Verification has been conducted by applying the amended B-BBEE Act No. 46 of 2013 under the Amended Construction Sector Code - Contractor (Section 9: 41287 Amended CSC)





Timothy Harrison
TECHNICAL SIGNATORY



WWW.PLATINUMVERIFICATIONS.CO.ZA REG NO: 2014/192475/07 TEL: +27 (0)11 975 3714

WE ARE LONGSTANDING MEMBERS OF



SASSDA

(South African Stainless Steel
Development Association)



SAGGA

(South African Glass and Glazing
Association)



MBA North

(Master Builders Association North)

STEEL STUDIO

SAVING LIVES ONE BALUSTRADE AT A TIME



A LITTLE BACKGROUND

Early 2000's, Stainless Steel as a material for balustrade systems was the new kid in town. It fast became the specified material on large commercial projects and architects started incorporating stainless steel into their balustrade designs for homes and offices.

Back then, Steel Studio didn't consider itself as a professional in balustrade safety regulations, but rather a professional in working with Stainless Steel and the quality of its craftsmanship and finishes. It was therefore accepted that we were not responsible for the design and safety engineering of the balustrade that architects put forward to their projects. Steel Studio would receive a design and would manufacture and install according to the architect's specification trusting that the drawings received were done according to the set industry standard.

Up until 2010, balustrade contractors were indemnifying themselves from the balustrade designs and the risks involved with the safety of these designs. It was accepted that the architects who were the specifiers were the professionals and had the necessary tools to design a safe balustrade system.



Then in 2011, **changes were made** to the South African National Standards (SANS) in regards to balustrades and almost immediately engineers were requesting spontaneous load bearing and impact tests on balustrades in commercial buildings in South Africa, Quickly we discovered that we had to closely scrutinise the designs that we were working from.

Manufacturing and installation had to answer to some very specific standards of safety concerning load bearing and impact and we decided to accept the design responsibility for the work and products we were delivering to the market.

THE EVOLUTION OF THE BALUSTRADE



We decided to enlist the help of a well-known structural engineer to assist in developing a range of materials and products that would ensure a balustrade system that would withstand any accidental impacts it might face. Manufacturing artful balustrades was not the be all and end all and our aesthetically pleasing work evolved using a more technical point of departure.

The importance also fell on our fixing methods and what was considered correct fixing earlier on had to be reviewed.

Historical injuries, accidents, spontaneous load and impact tests on site caused us to take a closer look at our materials, our manufacturing processes and our installation processes.

THE UNBEARABLE LOAD OF THE UNSCRUPULOUS



Unfortunately unscrupulous balustrade contractors **disregarded the new laws and still do**, continuing to install unsafe balustrade systems and staircases and risking lives. Professionals in the building industry and home-owners continue to appoint balustrade contractors purely based on the bottom line.

They ignore **material thicknesses, quality and installation specifications** that balustrades need to comply with. Thinking only about the bottom line is short-sighted as non-compliance may end up being a costly exercise when building inspectors do not accept the installation and insist on the installation of compliant systems.

The unfortunate part about the corrupt state of our country is that it is far too easy to slip a couple thousand under the table for a sign off with no consequences whatsoever.

SYSTEMS DESIGNED WITH YOUR SAFETY IN MIND



We have made it our task to **educate the industry**. This includes professionals within the building industry and consumers. We place a very high premium on the education of professionals and consumers. Our aim is to teach them what to look out for when appointing a balustrade contractor. The main question we ask, as a socially responsible citizen is: Will the balustrade we install keep our clients' children or the people using their home or building safe.

Steel Studio will assist architects and other industry professionals in designing SANS compliant balustrade systems.

Steel Studio are specialists in safe balustrade systems. We no longer indemnify ourselves from the design of the balustrade installation. We have invested years in dissecting and understanding the codes and can specify a balustrade system for any occupation purpose accurately, taking the full design and installation responsibility for our products. Our catch phrase **“Systems designed with your safety in mind”** rings true.

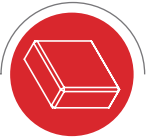
THE ALL IMPORTANT FORM 3



We provide an engineer's sign off for every type of balustrade that we manufacture and install. This signoff is in the form of an official Form 3: Declaration by a competent person appointed to design a component or an element of a system, from the National Building Regulations and Building Standards Act, 1977 (Act No.103 of 1977)

It is the role of the building owner and architect on any building project to ensure that the balustrades are compliant and that the necessary certification is obtained. It is therefore highly recommended that it is clearly stated on all drawings and/or bill of quantities that the balustrades are a “design and supply” contract, and that the balustrade and staircase subcontractor must supply a certificate on completion, stating that the balustrades have been designed and approved by a professional structural engineer.

PRODUCT SPECIFICATIONS AND LOADING REQUIREMENTS



SANS COMPLIANT BALUSTRADE SYSTEMS

All of our Balustrade systems are tested in consultation with a professional structural engineer, to comply with:

SABS 0104 Edition 2 1991 – Handrailing and Balustrading (safety aspects)

SANS 10400-A: 2011 Edition 3 – NBR – General Principles and Requirements

SANS 10400-B: 2012 Edition 3 – NBR – Structural design

SANS 10400-D: 2011 Edition 3 – NBR – Public safety

SANS 10400-M: 2011 Edition 3 – NBR – Stairways

SANS 10400-N: 2010 Edition 3 – NBR – Glazing

SANS 10400-S: 2011 Edition 3 – NBR – Facilities for persons with disabilities

SANS 10400-T: 2011 Edition 3 – NBR – Fire protection

SANS 10160-2: 2011 Edition 1.1 – Self-weight and imposed loads

SANS 10160-3: 2011 Edition 1.1 – Wind actions

SANS 10137: 2011 Edition 4 – The installation of glazing in buildings

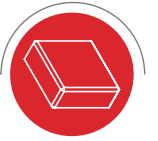
SANS 1263-1:2006 Edition 3.1 – Part 1: Safety performance of glazing materials under human impact

All balustrades are designed and tested in consultation with a professional structural engineer and in accordance with SANS deemed to satisfy requirements.

All balustrades are designed to comply with the relevant occupation categories as outlined in SANS 10160 eg. 0.5kN/m, 1kN/m, 1.5kN/m and 3kN/m.

All glass balustrades must withstand a 400 Joule soft body impact test.

STAINLESS STEEL POST AND GLASS BALUSTRADE OPTIONS



ROUND POST

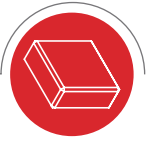


SQUARE POST



RECTANGULAR POST

FRAMELESS GLASS BALUSTRADE OPTIONS



FRAMELESS GLASS FIXING OPTIONS



SIDE MOUNTED



MOUNTED ON
SPIGOTS



HOUSED IN STEEL
CHANNEL



HOUSED IN CHANNEL
BY OTHERS

FRAMELESS GLASS HANDRAIL OPTIONS



ROUND HANDRAIL ON
OFFSET BRACKET



SQUARE RECESSED
HANDRAIL



ROUND RECESSED
HANDRAIL



RECTANGULAR
HANDRAIL ON OFFSET
BRACKET

**A Handrail is compulsory in the event that frameless glass is not fixed into a permanent concrete or steel channel.
All glass balustrades must withstand a 400 Joule soft body impact test.**

Stainless Steel Tube and Components are available in brushed and mirror polished finishes.
One of our qualified sales executives will advise on the correct grade suited to your application.

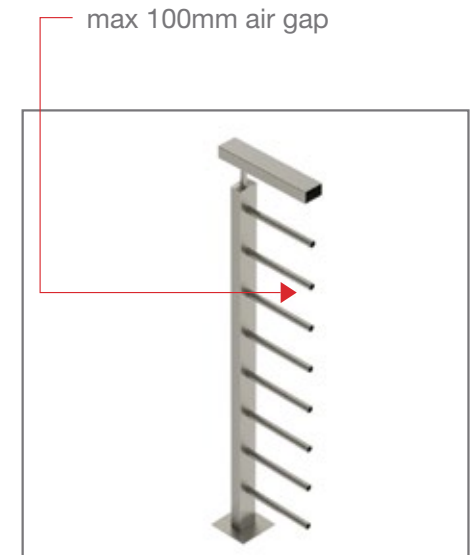
STAINLESS STEEL BALUSTRADE OPTIONS



ROUND POST



SQUARE POST



RECTANGULAR POST

CUSTOM STEEL STAIRCASES

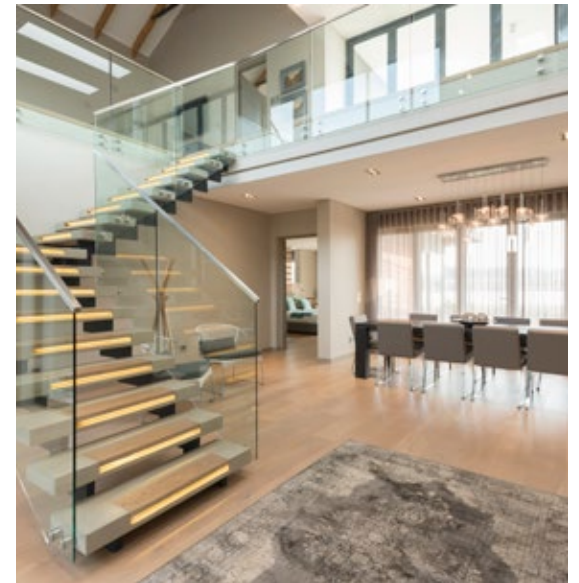
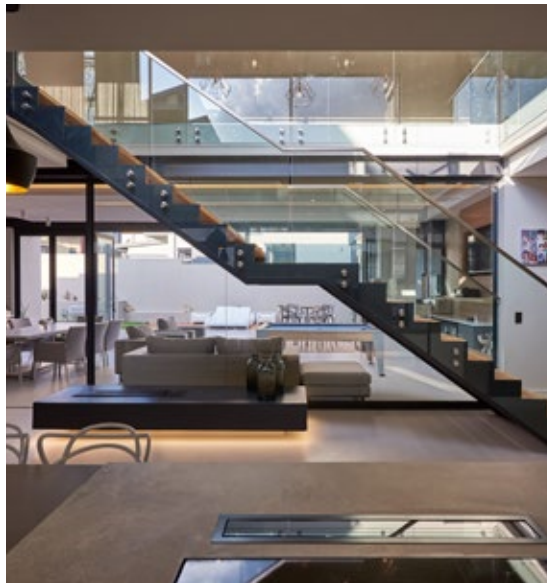


Steel Studio manufactures and installs a superior range of custom designed spiral, helical and straight staircase designs.

Steel Studio's quality in manufacturing and installation is guaranteed as we have selected specific professional teams in the company for this purpose. All materials used are of high quality as is used in the manufacturing of our balustrades systems. Our staircases are not only functional but also a labour of fine workmanship and design.

All custom staircases are designed and tested in consultation with a professional structural engineer and in accordance with SANS deemed to satisfy requirements.

Staircase structures are manufactured in stainless steel and mild steel material options.



STEEL CAGE FORMWORK FOR STAIRCASES



Steel Studio has launched a new range of Steel Cage Formwork for Staircases. We have pushed the boundaries on formwork in order to realise our client's dream staircase.

BENEFITS:

A TIME SAVING SOLUTION FOR THE BUILDING CONTRACTOR

Building Contractors no longer have to accept time constraints for on-site Staircase shuttering and manufacturing. This staircase design is manufactured in our factory and installation on site takes 1 to 2 days depending on the intricacies of the design. Professional shop drawings are signed off by the client before manufacturing commences.

SUPERIOR PROFESSIONALISM IN INSTALLATION

Our installation team has all of the skills necessary to ensure a successful installation in your new home. Team Leaders and Project Managers understand professional rigging that would be necessary when delivering, manoeuvring and installing on site.

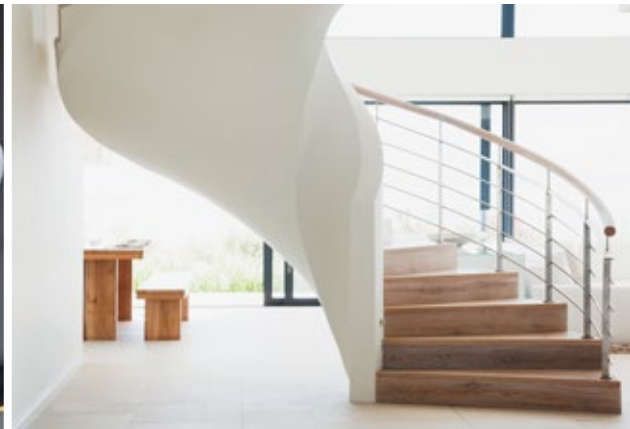
STEEL STUDIO OFFERS CONVENIENCE TO OUR CUSTOMERS

Not only are our clients now able to get the staircase of their dreams from Steel Studio, but they are also able to select a safe and compliant balustrade system from us to complete the look they have envisioned for their new living space.

CONVENTIONAL STAIR



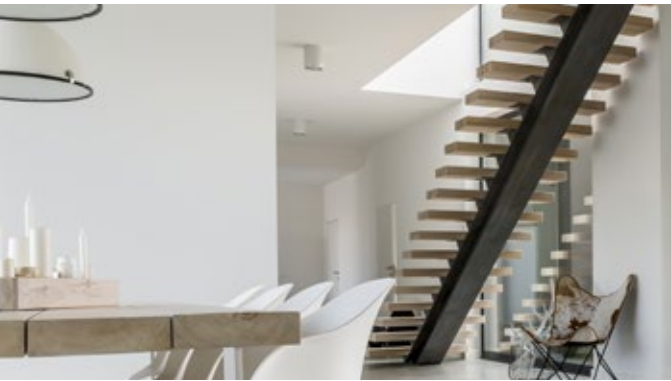
BALUSTRADE WALL STAIR



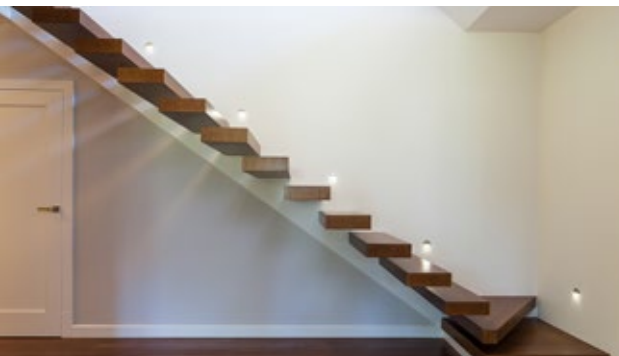
PROFILE STAIR



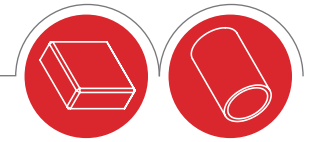
OPEN TREAD STAIR



CANTILEVER STAIR



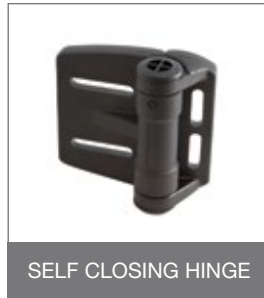
POOL ENCLOSURES



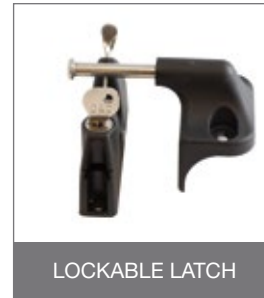
Although swimming pools are the focus of family fun and recreation, it is your responsibility to provide protection to avoid drowning fatalities. The first step in securing your pool area is by installing a pool enclosure to keep out curious and highly mobile toddlers.

Our pool enclosures are custom built to your projects unique specifications. We're constantly looking to break new ground and change the way people look at pool enclosures

HINGES AND LOCKS FOR POSTS



SELF CLOSING HINGE

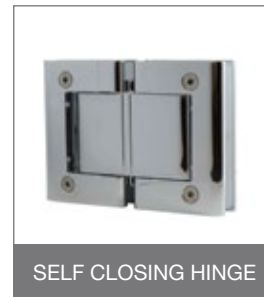


LOCKABLE LATCH

HINGES AND LOCKS FOR GLASS



LOCK FOR GLASS



SELF CLOSING HINGE

All hinges and locks are imported products, and are approved by the World Drowning Association

SATISFIED CLIENTS



CURRENT AND COMPLETED COMMERCIAL PROJECTS



90 Rivonia | R5.5 Mil



Embassy Towers | R3.5 Mil



Rivonia Village Walk
R9.0 Mil



Alice Lane Phase 3
R3.0 Mil



Apex on Smuts | R1.0 Mil



Discovery | R30.5 Mil



Duncan Court
R6.2 Mil



Sasol | R28.3 Mil



Menlyn Maine Central Sq
R2.2 Mil



Menlyn Time Square
R2.8 Mil



Menlyn Shopping Centre
R8.15Mil

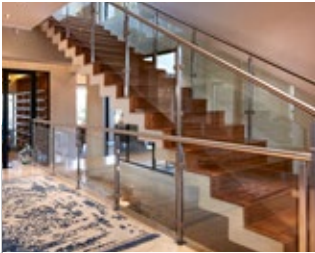


Metropolis on Park
R3.0 Mil

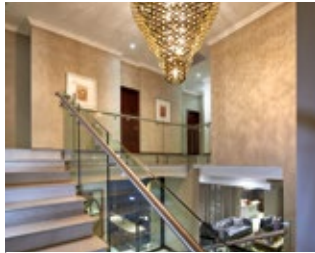


Old Mutual | R7.9 Mil

NOTABLE RESIDENTIAL PROJECTS



PRIVATE RESIDENCE



PRIVATE RESIDENCE



PRIVATE RESIDENCE



PRIVATE RESIDENCE



PRIVATE RESIDENCE



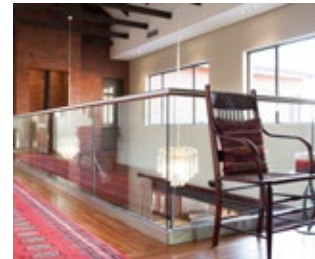
PRIVATE RESIDENCE



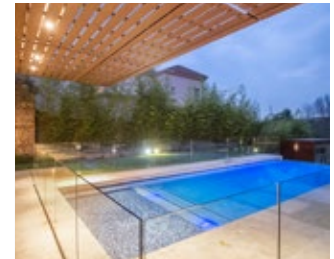
PRIVATE RESIDENCE



PRIVATE RESIDENCE



PRIVATE RESIDENCE



PRIVATE RESIDENCE



PRIVATE RESIDENCE



PRIVATE RESIDENCE



PRIVATE RESIDENCE



PRIVATE RESIDENCE



PRIVATE RESIDENCE

QUALITY GUARANTEED



Our products and
workmanship are
guaranteed



2 years
workmanship



Lifetime stainless steel
material guarantee.

CONTACT DETAILS



Head Office Johannesburg 011 608 1963

Nationwide 0861 724 5464

Caspian Street | Linbro Business Park | Sandton | 2065

sales@steelstudio.co.za

www.steelstudio.co.za

