

T. A. LINK

2003 Drilling Report (Cat-03-10)

LINK-CATHARINE PROPERTY

Catharine Twp.

Larder Lake Mining Division, Ontario

Terry A. Link
December, 2003



DIAMOND DRILLING AND ASSAYING

One 432 foot diamond drill hole (Cat-03-10) was drilled on claim #L1226955 during the fall of 2003 using a Boyles BBS-15 drill. AQ sized drill tools were used to produce a core slightly larger than 1" diameter. Drilling started on Aug. 15/03 and was completed on Sept. 1/03. A total of 35 samples of split core were submitted to Swastika Laboratories for gold analysis by fire assay.

Best assay was 9,852 PPB gold(3.2') within a wide gold zone.

Attached are:

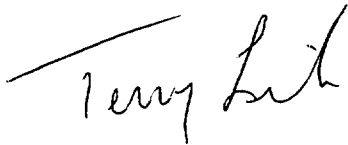
Diamond Drill Log; Cat-03-10 (5 pages)

DDH Section; Cat-03-10

DDH Location Plan; Cat-03-10

Assay Certificate; 3W-3067-RG1 (page 1 and page 2)

December 2003

A handwritten signature in black ink, appearing to read "Terry Link". The signature is written in a cursive, flowing style with a long horizontal stroke at the beginning.

Terry A. Link
Prospector

DIAMOND DRILL LOG

Drillhole: CAT-03-10

Page: 2/5

| Footage from | (feet) to | Description | sample | sample | | sample | % | AU | CU | ZN |
|-----------------|--------------|--|--------|--------|-------|--------|------|------|-----|-----|
| | | | number | from | to | length | sul | PPB | PPM | PPM |
| | | @ 169.1 0.8' with 50% irregular quartz veining, trace pyrite | 65454 | 168.3 | 170.3 | 2 | tr. | 5 | | |
| | | @ 177 0.3' of quartz veining @ 40 degrees to core axis | | | | | | | | |
| | | 178 to 179 50% irregular quartz veining, trace pyrite | 65455 | 177.5 | 179 | 1.5 | tr. | 7 | | |
| | | @ 183.8 0.3' quartz vein @ 60 degrees to core axis, 5% pyrite | 65456 | 179 | 183.4 | 4.4 | tr. | 14 | | |
| 184 | 196 | green-grey, iron carbonate altered, mottled, 20% quartz as veins and flooding, trace to 10% medium to coarse grained pyrite | 65457 | 183.4 | 184.4 | 1 | 1 | 447 | | |
| | | 184 to 187.5 light brown to red brown, altered, trace pyrite | 65458 | 184.4 | 187.5 | 3.1 | tr. | 3 | | |
| | | 187.5 to 190.5 trace to 2 % pyrite, 1% pyrite overall | 65459 | 187.5 | 190.5 | 3 | 1 | 24 | | |
| | | 190.5 to 193.7 35 % quartz veining-flooding, 1 to 10% medium to coarse grained pyrite, 6% overall | 65460 | 190.5 | 193.7 | 3.2 | 6 | 9852 | | |
| | | 193.7 to 196 20 % quartz veining @ high angle to core axis, 2 to 5% medium to coarse grained pyrite, 4% overall | 65461 | 193.7 | 196 | 2.3 | 4 | 5691 | | |
| 196 | 200 | green-grey, iron carbonate altered, foliation @ 45 to 55 degrees to core axis, 5% quartz, nil to 10% pyrite | | | | | | | | |
| | | 196 to 198.4 nil to trace pyrite | 65462 | 196 | 198.4 | 2.4 | tr. | 57 | | |
| | | 198.4 to 200 10% quartz veining @ 45 to 55 degrees to core axis, trace to 5% medium to coarse grained pyrite, 2% overall | 65463 | 198.4 | 200 | 1.6 | 2 | 437 | | |
| 200 | 211 | dark green-black, minor iron carbonate, 30% quartz, trace to 10% pyrite | | | | | | | | |
| | | 200 to 202.4 35% quartz veining-flooding, 8% medium to coarse pyrite | 65464 | 200 | 202.4 | 2.4 | 8 | 2711 | | |
| | | 202.4 to 203.5 trace pyrite | 65465 | 202.4 | 203.5 | 1.1 | tr. | 34 | | |
| | | 203.5 to 206 35% irregular brecciated quartz, trace to 1% fine to medium grained pyrite, < 0.5% overall | 65466 | 203.5 | 206 | 2.5 | <0.5 | 87 | | |
| | | 206 to 211 0.5 to 3% medium to coarse pyrite, 1.5% overall | 65467 | 206 | 211 | 5 | 1.5 | 2434 | | |
| 211 | 212.6 | brown, iron carbonate altered, foliation @ 30 to 65 degrees to core axis, minor quartz, nil pyrite | 65468 | 211 | 212.6 | 1.6 | nil | 86 | | |
| 212.6 | 217 | minor iron carbonate, 40 % quartz veins to 1' wide @ 30 to 85 degrees to core axis, black tourmaline in quartz to 3%, fine to medium pyrite in quartz to 5%, 1 to 20 % fine to coarse pyrite, 6% overall | 65469 | 212.6 | 217 | 4.4 | 6 | 1011 | | |

CAT-03-10 DIP: -47° AZIMUTH: 320°

220mW, 582m S of #1 Post (1226955)

OVERBURDEN

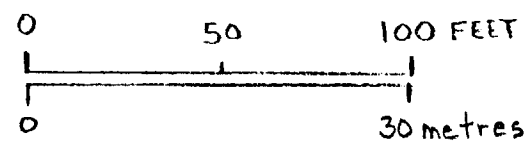
AU PPB

MAFIC VOLCANICS

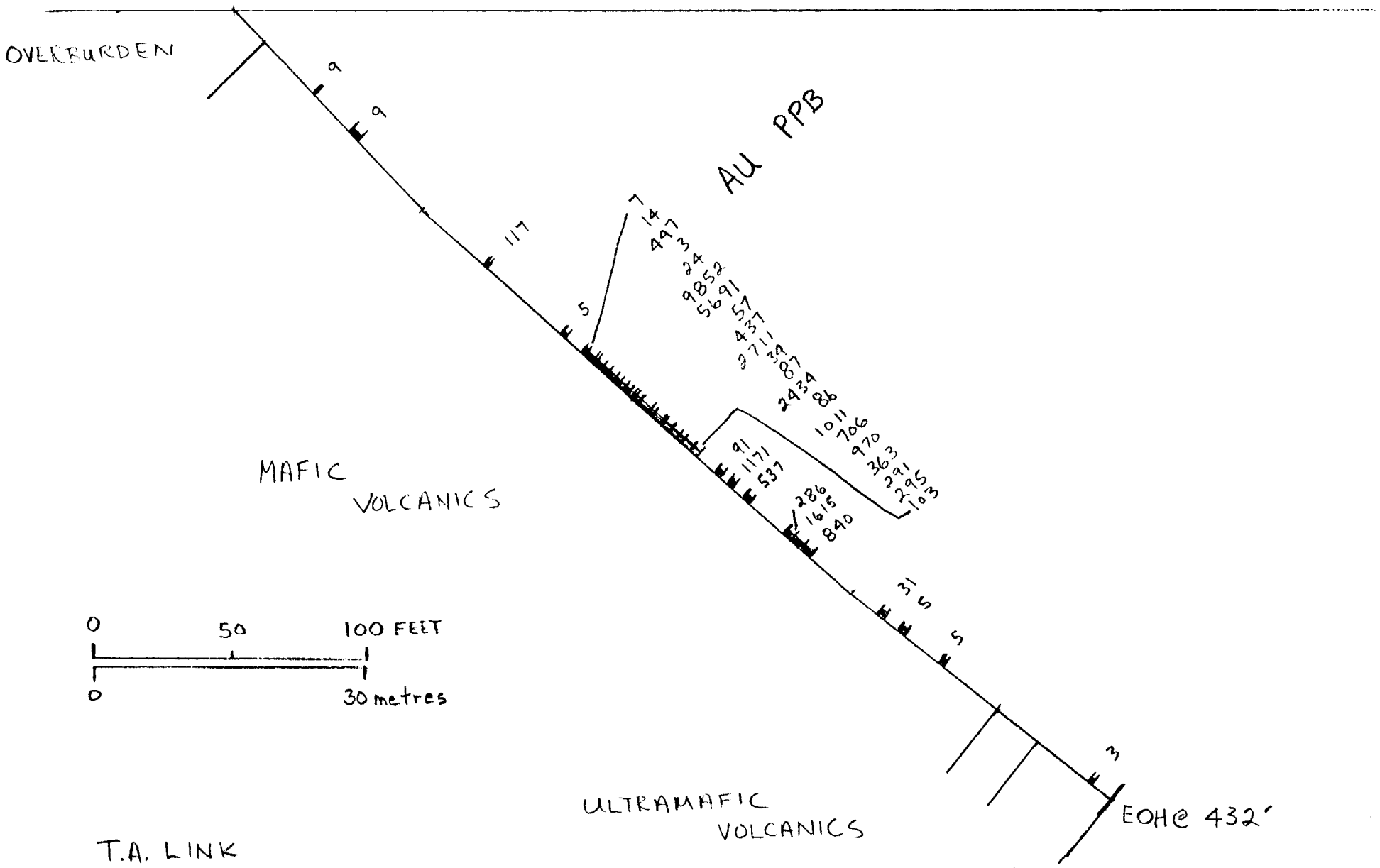
ULTRAMAFIC VOLCANICS

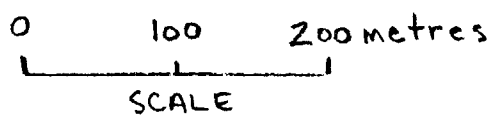
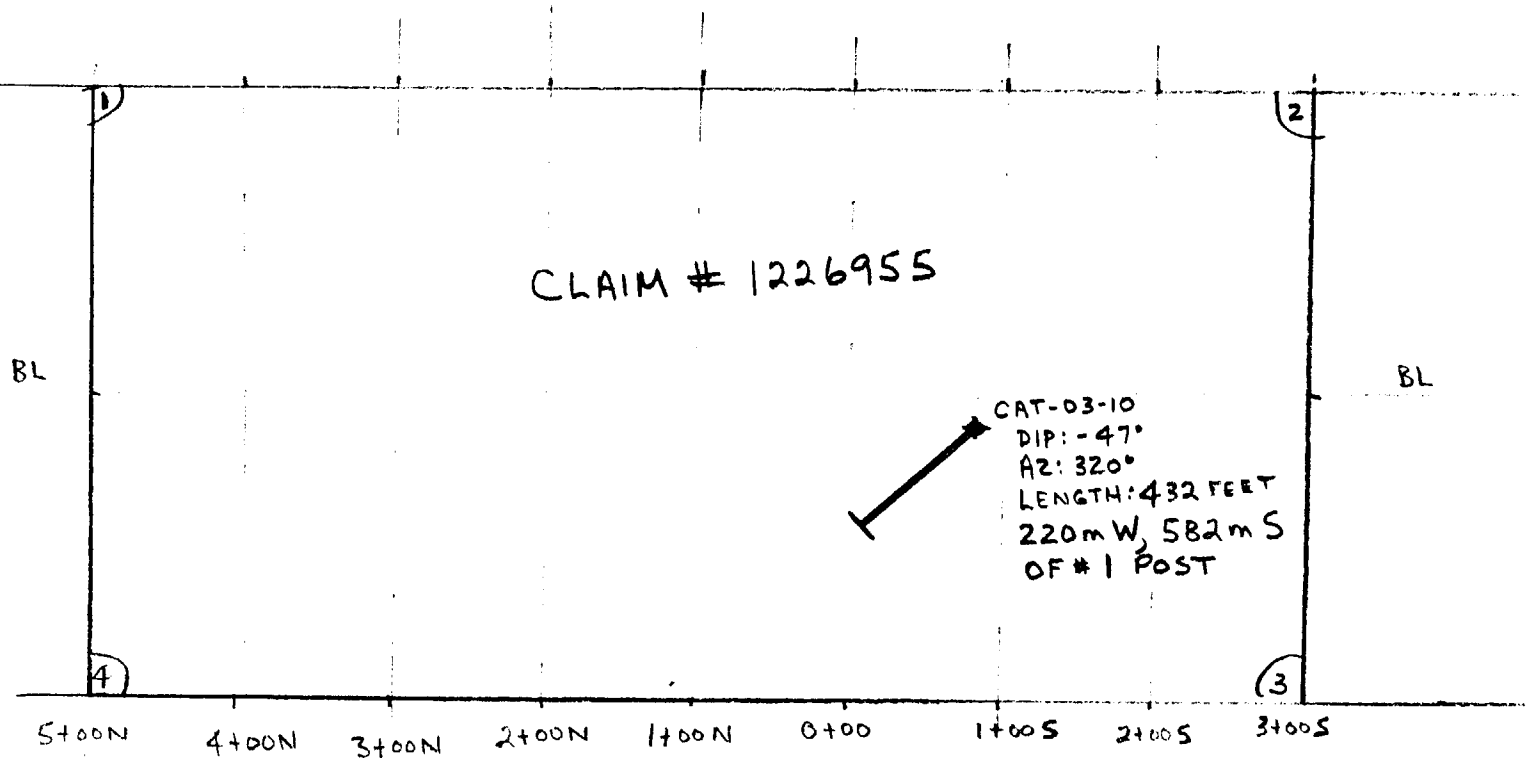
MAFIC VOLCANICS

EOHC 432'



T.A. LINK
 DDH SECTION
 CAT-03-10
 CLAIM # 1226955
 CATHARINE TWP.
 NOVEMBER 2003





T.A. LINK
DDH LOCATION PLAN
CAT-03-10
CLAIM # 122695
CATHARINE TWP.
NOVEMBER 2003



Established 1928

Swastika Laboratories Ltd

Assaying - Consulting - Representation

Page 1 of 2

Geochemical Analysis Certificate

3W-3067-RG1

Company: **T. LINK**


Date: OCT-01-03

Project:

Attn: Terry Link

We hereby certify the following Geochemical Analysis of 35 Core samples submitted SEP-27-03 by .

| Sample Number | Au PPB | Au Check PPB | Au 2nd PPB |
|---------------|-----------|-----------------|---------------|
| 65451 | 9 | - | - |
| 65452 | 9 | - | - |
| 65453 | 117 | - | - |
| 65454 | 5 | - | - |
| 65455 | 7 | - | - |
| 65456 | 14 | - | - |
| 65457 | 447 | - | - |
| 65458 | 3 | - | - |
| 65459 | 24 | - | - |
| 65460 | 9909 | 9737 | 9909 |
| 65461 | 5691 | - | - |
| 65462 | 57 | - | - |
| 65463 | 437 | - | - |
| 65464 | 2637 | 2784 | - |
| 65465 | 34 | - | - |
| 65466 | 87 | - | - |
| 65467 | 2434 | - | - |
| 65468 | 86 | - | - |
| 65469 | 996 | 1025 | - |
| 65470 | 706 | - | - |
| 65471 | 970 | - | - |
| 65472 | 363 | - | - |
| 65473 | 291 | - | - |
| 65474 | 295 | - | - |
| 65475 | 103 | - | - |
| 65476 | 91 | - | - |
| 65477 | 1171 | - | - |
| 65478 | 537 | - | - |
| 65479 | 286 | - | - |
| 65480 | 1584 | 1646 | - |

Certified by 



Established 1928

Swastika Laboratories Ltd

Assaying - Consulting - Representation

Page 2 of 2

Geochemical Analysis Certificate

3W-3067-RG1

Company: **T. LINK**
Project:
Attn: Terry Link

Date: OCT-01-03

We hereby certify the following Geochemical Analysis of 35 Core samples submitted SEP-27-03 by .

| Sample Number | Au PPB | Au Check PPB | Au 2nd PPB |
|---------------|-----------|-----------------|---------------|
| 65481 | 840 | - | - |
| 65482 | 31 | - | - |
| 65483 | 5 | - | - |
| 65484 | 5 | - | - |
| 65485 | 3 | - | - |

Certified by *Dennis Chouteau*

Ministry of
Northern Development
and Mines

Ministère du
Développement du Nord
et des Mines



Date: 2004-JUN-02

GEOSCIENCE ASSESSMENT OFFICE
933 RAMSEY LAKE ROAD, 6th FLOOR
SUDBURY, ONTARIO
P3E 6B5

TERRY ARNOLD LINK
P.O. BOX 561
KIRKLAND LAKE, ONTARIO
P2N 1A2 CANADA

Tel: (888) 415-9845
Fax: (877) 670-1555

Submission Number: 2.27719
Transaction Number(s): W0480.00786

Dear Sir or Madam

Subject: Approval of Assessment Work

We have approved your Assessment Work Submission with the above noted Transaction Number(s). The attached Work Report Summary indicates the results of the approval.

At the discretion of the Ministry, the assessment work performed on the mining lands noted in this work report may be subject to inspection and/or investigation at any time.

If you have any question regarding this correspondence, please contact STEVEN BENETEAU by email at steve.beneteau@ndm.gov.on.ca or by phone at (705) 670-5855.

Yours Sincerely,

A handwritten signature in black ink, appearing to read "Roy Denomme", with a long horizontal flourish extending to the right.

Roy Denomme
Senior Manager(A), Mining Lands Section

Cc: Resident Geologist
Terry Arnold Link
(Claim Holder)

Assessment File Library
Terry Arnold Link
(Assessment Office)

