

Covers

.....

Tray Covers

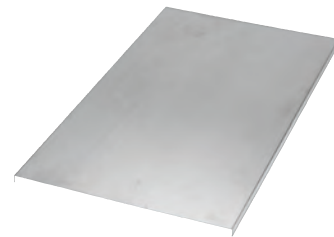
Tray covers are available for all classes of tray. They should be installed where falling objects may damage cables or where a vertical tray run is accessible by pedestrian or vehicular traffic.

Outside cable tray runs should be covered with a peaked flanged cover to protect cable from the elements and excess build up of snow and ice.

Solid Covers

These covers provide maximum mechanical protection for cables with limited heat build up. Solid covers are available with or without flange. Flanged covers have 1/2 in. flange.

Cover mounting hardware must be ordered separately.



Solid Flanged



Solid Non-Flanged

Ventilated Flanged Covers

This design offers excellent mechanical protection while allowing heat produced by cables to dissipate.

Cover mounting hardware must be ordered separately.



Ventilated Flanged

Peaked Flanged Covers

Peaked covers offer mechanical protection plus prevent accumulation of liquid on the cover. Peaked covers have 15° rise at the peak.

Cover mounting hardware must be ordered separately.



Peaked Flanged

Covers

Straight Cover Number Selection

(SPW 12)SNC-3			
Material Prefix	Width	Type	Length
SPW • Pregalvanized SHW • Hot-dipped galvanized* SSW • Stainless steel 316	06 • (6 in.) 09 • (9 in.) 12 • (12 in.) 18 • (18 in.) 24 • (24 in.) 30 • (30 in.) 36 • (36 in.) 42 • (42 in.)	SNC • Solid non-flanged cover SFC • Solid flanged cover VFC • Ventilated flanged cover PFC • Peaked flanged cover **	72 • (72 in.) 3 • (3 m)

* Hot-Dipped Covers only available in 72 in. and 1500 mm lengths.

Fitting Cover Number Selection

(SPW 12)SNCHB9024					
Material Prefix	Width	Cover Type	Fitting Type	Degree*	Nominal Radius
SPW • Pregalvanized SHW • Hot-dipped galvanized SSW • Stainless steel 316	06 • (6 in.) 09 • (9 in.) 12 • (12 in.) 18 • (18 in.) 24 • (24 in.) 30 • (30 in.) 36 • (36 in.) 42 • (42 in.)	SNC • Solid non-flanged cover SFC • Solid flanged cover VFC • Ventilated flanged cover	HB • Horizontal bend VI • Vertical inside bend HT • Horizontal tee HX • Horizontal cross VTU • Vertical tee up HYR • Horizontal wye right HYL • Horizontal wye left	30 • (30°) 45 • (45°) 60 • (60°) 90 • (90°)	12 • (12 in.) 24 • (24 in.) 36 • (36 in.) 48 • (48 in.)

* Required for HB & VI only.

Covers

Fitting Cover Number Selection (cont'd)

(SPW1812)SNCRT12

Material Prefix	Width 1	Width 2	Cover Type	Fitting Type	Radius*
SPW • Pregalvanized SHW • Hot-dipped galvanized SSW • Stainless steel 316	06 • (6 in.) 09 • (9 in.) 12 • (12 in.) 18 • (18 in.) 24 • (24 in.) 30 • (30 in.) 36 • (36 in.) 42 • (42 in.)	06 • (6 in.) 09 • (9 in.) 12 • (12 in.) 18 • (18 in.) 24 • (24 in.) 30 • (30 in.) 36 • (36 in.) 42 • (42 in.)	SNC • Solid non-flanged cover SFC • Solid flanged cover VFC • Ventilated flanged cover	RT • Horizontal reduce tee ET • Horizontal expand tee EX • Horizontal expand tee & reduce cross HSR • Horizontal straight reducer HLR • Horizontal left reducer HRR • Horizontal right reducer	12 • (12 in.) 24 • (24 in.) 36 • (36 in.) 48 • (48 in.)

* Radius not required for HSR, HLR, HRR.

Fitting Cover Number Selection

(SPW412)SNCVO9024

Material Prefix	Side Rail Height	Width	Cover Type	Fitting Type	Degree*	Nominal Radius
SPW • Pregalvanized SHW • Hot-dipped galvanized SSW • Stainless steel 316	3 • (3-5/8 in.) 4 • (4 in.) 5 • (5 in.) 6 • (6 in.) 7 • (7 in.)	06 • (6 in.) 09 • (9 in.) 12 • (12 in.) 18 • (18 in.) 24 • (24 in.) 30 • (30 in.) 36 • (36 in.) 42 • (42 in.)	SNC • Solid non-flanged cover SFC • Solid flanged cover VFC • Ventilated flanged cover	VO • Vertical outside bend VTD • Vertical tee down CS • Cable support fitting	30 • (30°) 45 • (45°) 60 • (60°) 90 • (90°)	12 • (12 in.) 24 • (24 in.) 36 • (36 in.) 48 • (48 in.)

* Required for VO only.

Covers

Peaked Covers

Steel Number Selection

SHW-24-PFC-HB-90-24

Material Prefix	Width	Cover Type	Fitting Type	Degree	Nominal Radius
SHW • Hot-dipped galvanized SSW • Stainless steel 316	06 • (6 in.) 09 • (9 in.) 12 • (12 in.) 18 • (18 in.) 24 • (24 in.) 30 • (30 in.) 36 • (36 in.) 42 • (42 in.)	PFC • Peaked flanged cover PVC • Peaked vented flanged cover	HB • Horizontal bend VI • Vertical inside bend	30 • (30°) 45 • (45°) 60 • (60°) 90 • (90°)	12 • (12 in.) 24 • (24 in.) 36 • (36 in.) 48 • (48 in.)

Note: Pregalvanized not available.

Steel Number Selection

SSW-6-24-PFC-VO-90-24

Material Prefix	Side Rail Height	Width	Cover Type	Fitting Type	Degree	Nominal Radius
SHW • Hot-dipped galvanized SSW • Stainless steel 316	4 • (4 in.) 5 • (5 in.) 6 • (6 in.) 7 • (7 in.)	06 • (6 in.) 09 • (9 in.) 12 • (12 in.) 18 • (18 in.) 24 • (24 in.) 30 • (30 in.) 36 • (36 in.) 42 • (42 in.)	PFC • Peaked flanged cover PVC • Peaked vented flanged cover	VO • Vertical outside bend	30 • (30°) 45 • (45°) 60 • (60°) 90 • (90°)	12 • (12 in.) 24 • (24 in.) 36 • (36 in.) 48 • (48 in.)

Note: Pregalvanized not available.

Steel Number Selection

SHW-24-PFC-HT-24

Material Prefix	Width	Cover Type	Fitting Type	Nominal Radius
SHW • Hot-dipped galvanized SSW • Stainless steel 316	06 • (6 in.) 09 • (9 in.) 12 • (12 in.) 18 • (18 in.) 24 • (24 in.) 30 • (30 in.) 36 • (36 in.) 42 • (42 in.)	PFC • Peaked flanged cover PVC • Peaked vented flanged cover	HT • Horizontal tee	12 • (12 in.) 24 • (24 in.) 36 • (36 in.) 48 • (48 in.)

Note: Pregalvanized not available.

Covers

Peaked Covers

Horizontal Bend / Vertical Inside Bend



Steel Number Selection

SHW-12-PFC-HB-90-24

Material Prefix	Width	Cover Type	Fitting Type	Degree	Radius
SHW SSW	06 • (6 in.) 09 • (9 in.) 12 • (12 in.) 18 • (18 in.) 24 • (24 in.) 30 • (30 in.) 36 • (36 in.) 42 • (42 in.)	PFC • Peaked flanged cover PVC • Peaked ventilated flanged cover	HB • Horizontal bend VI • Vertical inside bend	30 • (30°) 45 • (45°) 60 • (60°) 90 • (90°)	12 • (12 in.) 24 • (24 in.) 36 • (36 in.) 48 • (48 in.)

Note: Pregalvanized not available.

Covers

Peaked Covers

Vertical Outside Bend



Steel Number Selection

SHW-4-12-PFC-VO-90-24

Material Prefix	Side Rail Height*	Width	Cover Type	Fitting Type	Degree	Radius
SHW SSW	4 • (4 in.) 5 • (5 in.) 6 • (6 in.) 7 • (7 in.)	06 • (6 in.) 09 • (9 in.) 12 • (12 in.) 18 • (18 in.) 24 • (24 in.) 30 • (30 in.) 36 • (36 in.) 42 • (42 in.)	PFC • Peaked flanged cover PVC • Peaked ventilated flanged cover	VO • Vertical outside bend VI • Vertical inside bend	30 • (30°) 45 • (45°) 60 • (60°) 90 • (90°)	12 • (12 in.) 24 • (24 in.) 36 • (36 in.) 48 • (48 in.)

* Not required for VI

Covers

Peaked Covers

Horizontal Tee



Steel Number Selection

SHW-12-PFC-HT-24

Material Prefix	Width	Cover Type	Fitting Type	Radius
SHW SSW	06 • (6 in.) 09 • (9 in.) 12 • (12 in.) 18 • (18 in.) 24 • (24 in.) 30 • (30 in.) 36 • (36 in.) 42 • (42 in.)	PFC • Peaked flanged cover PVC • Peaked ventilated flanged cover	HT • Horizontal tee	12 • (12 in.) 24 • (24 in.) 36 • (36 in.) 48 • (48 in.)

Covers

Accessories For Covers

Quantity of Standard Cover Clamps Required

Quantity of Standard Cover Clamps Required	
Straight section (6 ft.)	4 pcs.
Straight section (12 ft./ 3 m)	6 pcs.
Horizontal and vertical bends	4 pcs.
Tees	6 pcs.
Crosses	8 pcs.

Note: When using the Heavy-Duty Cover Clamp, only half the quantity of pieces are required.

Raised Cover Clamp



Designed to raise cover above tray for added ventilation.

Cat. No.	Cover Offset (in.)*	Material Prefix
SPW(*)RCC	1	SPW
	2	SSW

(*) Insert cover offset.

Peaked End Cap



Used for transition between peaked covers to straight covers.

Cat. No.	Width (in.)	Material Prefix
SPW(*)PEC SHW(*)PEC SSW(*)PEC	06	SPW SHW SSW
	09	
	12	
	18	
	24	
	30	
	36	
42		

(*) Insert width

Covers

Accessories For Covers

Cover Clamp



Rigid indoor cover clamp for flat and flanged covers.

Cat. No.	Material Prefix	Side Rail Height (in.)
(Prefix)-3-SCC (Prefix)-4-SCC (Prefix)-5-SCC (Prefix)-6-SCC (Prefix)-7-SCC	SHW SPW SSW	3
		4
		5
		6
		7

Heavy-Duty Cover Clamp



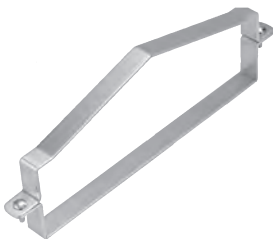
Wrap around design offers added protection for rugged applications and outdoor conditions.

Hardware included.

Cat. No.	Material Prefix	Tray Width (in.)	Side Rail Height (in.)
(Prefix)-3-(*)-HCC (Prefix)-4-(*)-HCC (Prefix)-5-(*)-HCC (Prefix)-6-(*)-HCC (Prefix)-7-(*)-HCC	SPW SHW SSW	06	3 4 5 6 7
		09	
		12	
		18	
		24	
		30	
		36	
		42	

(*) Insert tray width

Heavy-Duty Peaked Cover Clamp



Wrap around design formed to fit peaked cover for outdoor applications.

Hardware included.

Cat. No.	Material Prefix	Tray Width (in.)	Side Rail Height (in.)
(Prefix)-3-(*)-HPC (Prefix)-4-(*)-HPC (Prefix)-5-(*)-HPC (Prefix)-6-(*)-HPC (Prefix)-7-(*)-HPC	SPW SHW SSW	06	3 4 5 6 7
		09	
		12	
		18	
		24	
		30	
		36	
		42	

(*) Insert tray width

Cover Joint Strip



Strip used for joining covers end to end.

Cat. No.	Material	Tray Width (in.)
ABW-(*)-PCS	Plastic	06
		09
		12
		18
		24
		30
		36
42		

(*) Insert tray width