



**New
2008**

PLATING SYSTEM



NEW ENGLAND GAS OVEN



TOYOTA FORKLIFT

SHEARS

- **Accushear** 10' Hyd. Power Shear, .250 Mild Steel Cap., Digital Back Gage, Mod. 625010, S/N 4829 (New 2004) •
- **Pexto** 6' Power Shear, 10 GA., 5 H.P., 3 Ph. w/ Back Gage, Mod. G-372G, S/N M-7738 •
- **Wysong** 4' Hyd. Power Shear, 12 GA., 5 H.P., 3 Ph., •

PRESS BRAKES

- **Toyokoki** 8', Hyd. 85 Ton Cap., 200 MM Stroke, Mod. HYB-8525, S/N 7004615, w/ Merlin 1SB Blankout Digital System, 9-/Axis Back Gage, European Upper Beam Tool Holder, 55mm bottom Die Holder •
 - **Cincinnati** 12' Hyd., 135 Ton Cap, 8" Stroke, S/N 41404, w/ Hurco Autobend IV Digital Back Gage & Shadow VI Safety Light Curtains •
 - **Cincinnati** 10' Hyd., 350 Ton Cap., 16" Stroke, Mod. 350 CBII, S/N 51799w/ Cincinnati Digital Back Gage, & Merlin Beam Blankout System •
 - **Pacific** 8' Hyd., 135 Ton Cap., Mod. J135-8, S/N A685 w/Hurco Autobend 5C Digital Back Gage & Shadow V Blankout System •
 - **Wysong** 6' Hyd. 35 Ton Cap., Mod. 3572, S/N PB59-130, w/Comp-U-Bend Digital Back Gage, & 1SB-PRO Programmable Blankout System •
 - **Di-Acro** 4' Hyd., 17 Ton Cap., Mod. 17T-14-48-2, S/N TP08881092 w/ Autobend Hurco Digital Back Gage & ISO-PRO Programmable Beam Blankout System •
- ★ Large Qty Press Brake Dies & Tooling ★

COMPRESSORS & DRYERS

- **Kaeser** Rotary Screw, 75 H.P., 3 Ph. •
- **Kaeser** TE91 Air Dryer • **Kaeser** Air Dryer, Mod. AS35 •
- Pneumatic Air Dryer, Mod. AD-150 •
- **Speedaire** Vert. Air Compressor, 1 Ph. w/ **Speedaire** Dryer •

IRONWORKER

- **Piranha** Single Head, 3 Ph., S/N P3-288 •

WELDERS

- (2) **Miller** Port 600 Amp Arc Welders, Mod. Dynasty 700 •
- (3) **Miller** 350 Amp AC/DC Digital Welders, Mod. Syncrowave 350 LX •
- **Miller** Port 350 Amp AC/DC Arc Welder, Mod. Millermatic 350P •
- **Lincoln** Port 250 Amp Arc Welder, Mod. Ideal ARC-SP-255 •
- **Lincoln** Port 250 Amp AC/DC Welder, Mod. Power MIG255 •
- **Lincoln** 300 Amp DC Arc Welder, Mod. RS3-325 •
- (2) **Airco** 300 Amp AC/DC Square Wave Arc Welders •
- **Lincoln** Port Ideal Arc SP250 MIG Welder •
- **Lincoln** Squiret Welder, S/N 60648 •
- **Cutlass** Arc 700 Stud Welder •
- (15) Port. Welding Curtains • Ass't Black Welding Curtains •
- 3 Ass't Acorn Tables • Welding Tables • Etc. • Etc. •

SPOT WELDERS

- **Frank Brandt** 150KVA, 480 Volt, 3 Ph. •
- **Frank Brandt** 100KVA, 480 Volt, 3 Ph. •
- **Alphil** 50KVA, 480 Volt, 3 Ph., Mod. AR1 •
- **Alphil** 20KVA, 220 Volt, 3 Ph., Mod. RFTF •
- **Sterling** 40KVA, 220 Volt, 3 Ph., Mod. SP18M •

OVERHEAD CRANE

- **Spinmaster** 38' Single Girder, 3 Ton Cap., w/ Yale 3 Ton Elec. Hoist, Pendant Controls •

INVENTORY

- (50) Sheets S.S. 4 x 10, 4 x 12, & 4 x 8 x Ass't Gauges •
- (60) Sheets Alum. 4 x 10 & 4 x 8 x Ass't Gauges •
- (40) Sheets Galv. 4 x 10 & 5 x 10 x Ass't Gauges •
- (30) Sheets CRS Steel 4 x 10 & 3 x 10 x Ass't Gauges •
- (14) Sheets P & D Steel 4 x 10 & 2 x 6 x Ass't Gauges •
- Lg. Qty. Work-In-Process •
- Ass't Drums of Chromicoat, Crysocoat, Oakite, Aluminum Cleaners • Etc. • Etc. •
- **Lg. Qty. Fasteners Including:**
Nuts, Bolts, Washers, Rivets, Hinges, S.S. Dowel Pins, Etc. • Etc. •



1 OF 2

MILLER DYNASTY 700



1 OF 3

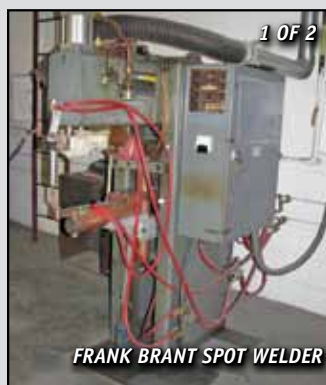
MILLER 350 LX



PIRANHA IRONWORKER



ALPHIL SPOT WELDER



1 OF 2

FRANK BRANT SPOT WELDER



1 OF 7

DEVILBISS PAINT BOOTH

Aaron Posnik

AUCTIONEERS • APPRAISERS

SECURED PARTY SALE BY

PUBLIC AUCTION

PRECISION SHEET METAL FABRICATOR

- METAL FABRICATING MACHINERY •
- CNC TURRET PUNCH PRESSES • PRESS BRAKES • SHEARS •
- INSERTION & PUNCH PRESSES • SAWS • SANDERS •
- MACHINE TOOLS • INSPECTION EQUIPMENT • WELDERS •
- FORKLIFTS • COMPRESSORS • PLATING SYSTEM • STEEL SHEET STOCK •
- INVENTORY • PLANT SUPPORT & OFFICE EQUIPMENT •



COMMERCIAL SHEET METAL CO., INC.
 465 TURNPIKE STREET (RT. 138)
 CANTON, MASSACHUSETTS

TO BE SOLD ON THE PREMISES AND BY LIVE INTERNET BIDDING

THURSDAY, MARCH 24TH AT 10:30 A.M.

SALE PER ORDER OF SECURED PARTY
 THOMAS S. HEMMENDINGER, ESQ.

OF THE FIRM OF BRENNAN, RECUPERO, CASCIONE, SCUNGIO & MCALLISTER, LLP
 362 BROADWAY, PROVIDENCE, RI
 ATTORNEYS FOR SECURED PARTY

TERMS OF SALE: 25% DEPOSIT CASH OR CERTIFIED CHECK
 10% BUYERS PREMIUM APPLIES ON ALL ONSITE PURCHASES
 13% BUYERS PREMIUM APPLIES ON ALL INTERNET PURCHASES
 OTHER TERMS TO BE ANNOUNCED AT TIME OF SALE
INSPECTION: WEDNESDAY, MARCH 23RD - 10:00 A.M. TO 4:00 P.M.
 & MORNING OF SALE - 8:30 A.M TO 10:30 A.M.

Aaron Posnik

AUCTIONEERS • APPRAISERS

MA Auc. Lic. #161
 Est. 1932
 PA Auc. Lic. #AY000241L

Visit our Website @ www.posnik.com

Aaron Posnik & Co., Inc.
 83 State Street • Springfield, MA 01103
 (413) 733-5238 (Fax) 731-5946

Aaron Posnik & Co., Inc.
 83 State Street
 Springfield, MA 01103

Presorted
 First Class Mail
 U.S. POSTAGE
 PAID
 Permit No. 12
 Springfield, MA

RETURN SERVICE REQUESTED

LIVE ONSITE & LIVE INTERNET BIDDING AVAILABLE

Aaron Posnik & Co., Inc.
 P.O. Box 247 • Malvern, (Philadelphia) PA 19003
 (610) 853-6655 (Fax) 583-6633

THURSDAY, MARCH 24TH AT 10:30 A.M. CANTON, MASSACHUSETTS



MURATEC WIEDEMANN VECTRUM CNC TURRET PUNCH PRESS

10% BUYERS PREMIUM APPLIES ON ALL ONSITE PURCHASES
 13% BUYERS PREMIUM APPLIES ON ALL INTERNET BIDDERS

BID FROM THE COMFORT OF YOUR OFFICE!!!

If you can't personally attend the auction sale, you don't have to miss out on the bidding. You can bid on the equipment in the following ways:

- **LIVE PHONE BID:** Call us by **MONDAY, MARCH 21ST** to set up the details.*
- **INTERNET BID:** Visit www.posnik.com or bidspotter.com to register online.*
- **PROXY BID:** Call us and we'll be happy to fax you a proxy bid form. Fill it out, fax it back and we'll bid on your lot for you.*

*We must receive a 25% deposit of all proxy and phone bids before the auction to secure your bid. No credit cards.

To Bid Online: Visit www.posnik.com or www.bidspotter.com

Webcasts Powered by



HARBOUR CAPITAL CORPORATION

LEASE FINANCING

Maximize your bidding power! Get pre-approved for 5 Thousand to 3 Million dollars in lease financing with no financials required for up to 100K.

For more information call David Johnson at Harbour Capital at 866-735-2662.

To apply online go to: www.harbourcapital.com

Aaron Posnik

AUCTIONEERS • APPRAISERS

Aaron Posnik & Co., Inc.
 83 State Street • Springfield, MA 01103
 (413) 733-5238 (Fax) 731-5946

MA Auc. Lic. #161 • Est. 1932 • PA Auc. Lic. #AY000241L

Aaron Posnik & Co., Inc.
 P.O. Box 247 • Malvern, (Philadelphia) PA 19003
 (610) 853-6655 (Fax) 583-6633

PUBLIC AUCTION

PRECISION SHEET METAL FABRICATOR

- METAL FABRICATING MACHINERY •
- CNC TURRET PUNCH PRESSES • PRESS BRAKES • SHEARS •
- INSERTION & PUNCH PRESSES • SAWS • SANDERS •
- MACHINE TOOLS • INSPECTION EQUIPMENT • WELDERS •
- FORKLIFTS • COMPRESSORS • PLATING SYSTEM • STEEL SHEET STOCK •
- INVENTORY • PLANT SUPPORT & OFFICE EQUIPMENT •



COMMERCIAL SHEET METAL CO., INC.
465 TURNPIKE STREET (RT. 138)
CANTON, MASSACHUSETTS

TO BE SOLD ON THE PREMISES AND BY LIVE INTERNET BIDDING

THURSDAY, MARCH 24TH

AT 10:30 A.M.

INSPECTIONS: WEDNESDAY, MARCH 23RD – 10:00 A.M. TO 4:00 P.M. & MORNING OF SALE – 8:30 A.M TO 10:30 A.M.



MURATEC WIEDEMANN VECTRUM CNC TURRET PUNCH PRESS

Aaron Posnik

AUCTIONEERS • APPRAISERS

SECURED PARTY SALE BY
PUBLIC AUCTION



COMMERCIAL SHEET METAL CO., INC.
465 TURNPIKE STREET (RT. 138)
CANTON, MASSACHUSETTS

TO BE SOLD ON THE PREMISES AND BY LIVE INTERNET BIDDING
THURSDAY, MAY 24TH AT 10:30 A.M.

INSPECTIONS: WEDNESDAY, MARCH 23RD - 10:00 A.M. TO 4:00 P.M.
& MORNING OF SALE - 8:30 A.M. TO 10:30 A.M.

AIRPORT:

LOGAN INTERNATIONAL AIRPORT (BOS) - APPROX. 22 MILES TO SITE
122 HARBORSIDE DRIVE, EAST BOSTON, MA 1-617-568-2509

DIRECTIONS:

FROM LOGAN INT'L AIRPORT - TAKE I-90 W/MASSACHUSETTS TURNPIKE/TED WILLIAMS TUNNEL APPROX. 2.5 MILES. TAKE THE I-93 EXIT 25-24, TOWARD SOUTH BOSTON. APPROX. 0.2 MILE. TAKE EXIT 24 ON THE LEFT TOWARD I-93. APPROX. 0.8 MILE. MERGE ONTO I-93 S/US-1 S VIA THE EXIT ON THE LEFT. APPROX. 15.1 MILE. MERGE ONTO RT-138 S VIA EXIT 2A TOWARD STOUGHTON. APPROX. 2.7 MILES. TURNPIKE STREET IS ON THE RIGHT. (WATCH FOR AUCTION SIGNS).

HOTELS:

HOLIDAY INN - 1-617-407-4007

700 MYLES STANDISH BOULEVARD, TAUNTON, MA

COURTYARD BY MARRIOTT - 1-781-297-7000

200 TECHNOLOGY CENTER DRIVE, STOUGHTON, MA

COMFORT INN - 1-877-233-4885

1374 NORTH MAIN STREET, RANDOLPH, MA

HAMPTON INN - 1-781-769-7000

434 BOSTON PROVIDENCE TURNPIKE, NORWOOD, MA

TERMS & CONDITIONS:

EVERYTHING SOLD "AS IS/WHERE IS"

TERMS OF SALE:

25% DEPOSIT AT TIME OF SALE BY CASH, CERTIFIED OR BANK CHECK, OR BANK WIRE TRANSFER. 10% BUYERS PREMIUM APPLIES ON ALL ONSITE PURCHASES. 13% BUYERS PREMIUM APPLIES ON ALL INTERNET PURCHASES. PERSONAL OR COMPANY CHECK ACCEPTED ONLY IF ACCOMPANIED WITH A BANK LETTER GUARANTEEING PAYMENT. EXAMPLE OF BANK LETTER OF GUARANTEE: THIS BANK GUARANTEES PAYMENT TO AARON POSNIK & CO., INC. ON ACCOUNT # _____ UP TO THE AMOUNT OF \$ _____ FOR PURCHASES MADE AT THE COMMERCIAL SHEET METAL CO., INC. AUCTION TO BE HELD ON MARCH 24TH. NO PURCHASE REMOVED UNTIL COMPLETE SETTLEMENT IS MADE. OTHER TERMS TO BE ANNOUNCED AT TIME OF SALE.

SALES TAX:

MASSACHUSETTS SALES TAX LAWS APPLY. DEALERS BRING COPY OF EXEMPT CERTIFICATE.

BID LIVE BY PHONE:

CALL US BY MARCH 21ST TO SET UP THE DETAILS.

BID LIVE BY INTERNET:

VISIT OUR WEBSITE AT WWW.POSNIK.COM OR WWW.BIDSPOTTER.COM FOR INSTRUCTIONS ON BIDDING ONLINE.

BID BY MAIL:

IF YOU CANNOT ATTEND THIS AUCTION IN PERSON WE WILL BE HAPPY TO RECEIVE YOUR BID ON THE ITEMS THAT YOU DESIGNATE (IF YOUR BID IS SENT BY MAIL OR FAX AND RECEIVED BY OUR OFFICE AT LEAST 24 HOURS PRIOR TO THE COMMENCEMENT OF THE SALE). IF YOU WISH TO BID BY MAIL, KINDLY PROVIDE A COMPLETE LIST OF THE ITEMS DESIRED AND ENCLOSE A 25% DEPOSIT BY CERTIFIED CHECK. YOU WILL BE RESPONSIBLE FOR PURCHASES IF YOU ARE THE HIGH BIDDER, UNDER THE TERMS AND CONDITIONS TO BE ANNOUNCED AT TIME OF SALE. IF YOU ARE THE SUCCESSFUL BIDDER, WE WILL NOTIFY YOU WITHIN 24 HOURS OF THE SALE AND YOU MUST MAKE PAYMENT OF THE BALANCE DUE BY WIRE TRANSFER TO OUR BANK WITHIN 24 HOURS OF NOTIFICATION. IF YOU ARE UNSUCCESSFUL IN YOUR BID, YOUR DEPOSIT WILL BE RETURNED TO YOU WITHIN 72 HOURS OF THE SALE.

IMPORTANT NOTICE:

THE INFORMATION DESCRIBED IN THIS BROCHURE IS CORRECT TO THE BEST OF OUR KNOWLEDGE BUT WE CANNOT GUARANTEE SAME. IT IS FOR THIS REASON THAT BUYERS SHOULD AVAIL THEMSELVES OF THE OPPORTUNITY FOR INSPECTION PRIOR TO THE SALE.



TOYOKOKI PRESS BRAKE



CINCINNATI 12' PRESS BRAKE



CINCINNATI 10' PRESS BRAKE



PACIFIC 8' PRESS BRAKE



WYSONG 6' PRESS BRAKE



DI-ARCO 4' PRESS BRAKE



AMADA BANDSAW



New
2007

HAEGER INSERTION PRESS

CNC TURRET PUNCH PRESSES

- Muratec Wiedemann Vectrum - 3046VX-T, S/N 1327S, (54) Station Tool Turret, 30 Ton Cap. w/ 10' x 13' Ball Bearing Table, Muratec CNC Control w/ Turbo Conveyor, Mod. 5298-8054, & Muratec Auto Cell Loader (New 2004) •
- Muratec Wiedemann Vectrum 3046-UX-P37164, S/N 348S, (54) Station Tool Turret, 30 Ton Cap., 10' x 13' Ball Bearing Table, Fanuc 16-P CNC Control, Turbo Chip Conveyor, Muratec Auto Cell Loader, (New 1999) •

★ Lg. Qty. Punch Press Tooling ★

INSERTION PRESSES

- Haeger Fastner Mod. 824-WT-3H, S/N 8WT30930, 8 Ton Cap., Touch Screen Control w/ Tooling (New 2007) •
- Haeger Fastener Mod. 824-WT-2H, S/N 8WT20651, 8 Ton Cap. Modular Auto. Feed Sys. Touch Screen Control, w/ Tooling (New 2004) •
- (2) Pemsertter, Series 4, 6 Ton Cap. w/ Tooling •
- Pemsertter, Mod. Auto. Press, 6 Ton Cap., FMC Magnetic Parts Feeder w/Tooling •

PUNCH PRESSES

- Strippit Single Station, 1/4" Mild Steel Cap. Mod. Super 30/30 •
- Strippit Single Station, 1/4" Mild Steel Cap., Mod. Custom 30/30 •
- (3) Whitney-Jensen Single Head Punch Presses, Ft. Oper •
- Wiedemann Man. Turret Punch Press, Mod. R2, S/N 3316 •

SAWS

- Amada 12" x 22" Horizontal Metal Bandsaw, 3 Ph. Mod. HK-400, S/N 40010013 w/ Clamping System Tilt Head, In & Out Feed Conveyors •
- DoAll 16" Vertical Bandsaw, 3 Ph., Mod. 1612-4 w/ Welding & Grinding Attachments •
- Powermatic 14" Vertical Bandsaw, Mod. 143 •
- Bewo 10" Cold Saw, 3 Ph., w/ Clamping System •
- 12" Compound Mitre Saw • 10" Chop Saw, 3 Ph. •

SANDERS

- Timesavers 36" Belt Sander, Adj. Table, D.R.O., 3 Ph., Mod. 2200 w/ Dust Collector •
- Timesavers 36" Belt Sander, Adj. Table, 3 Ph., Mod. 237-1M w/Dust Collector •
- Timesavers 9" Belt Sander, 5 H.P., 3 Ph, Mod. 948 •
- Samco 8' x 6" Endless Belt Sander, 3 Ph, Mod. LLT •
- Carborundum 4" Stroke Sander Mod. 8vR1-6, S/N 68067, 3 H.P. •
- Poly 4" Single End Sander, 1-1/2 H.P, 3 Ph. •
- Delta 4" Belt/6" Disc Sander, 1 Ph., Mod. 31-460 •
- (3) Continental & Kalamazoo 1" Belt Sanders, 1 Ph. •

MISC. SHEET METAL MACHINERY

- (2) Pexto 36" Slip Rollers, Motorized •
- Roundo 60" Port Slip Roller, Mod. 1P-110/5 •
- Euromax Auto. Notcher, 3 Ph, Mod. AF200/16 •
- DiAcro 12" Man. Shear, Mod. 12 • DiAcro Man. Bender, Mod. 4 •
- Strippit Punch & Die Grinder, Mod. 72150 w/ Stand •
- Whitney Punch • 4" Man. Shear •
- CP Hyd. Circle Punch •

★ Roto-Finish Vibratory Finisher, 3 Ph., Mod. 3350 ★



New
2004

HAEGER INSERTION PRESS



New
1999

MURATEC CNC TURRET PUNCH PRESS



ACCUSHEAR 10' SHEAR



PEXTO 6' SHEAR

Aaron Posnik

AUCTIONEERS • APPRAISERS

STARTING AT 10:30 A.M.



DEBURRING MACHINES



JET TOOLROOM LATHE



PARTIAL VIEW SHEET STOCK

MILLING MACHINES

- Bridgeport Vertical Miller, 9" x 42" Table, Powerfeed, 1 H.P., 3 Ph., S/N 95702
- Bridgeport Vertical Miller, 9" x 42" Table, Powerfeed, 1 H.P., 3Ph., w/2-Axis D.R.O.,

LATHES

- Jet Tool Room Lathe, 13" x 36" B.C., Mod. GH-1340W-3, S/N 101W096W w/ Tail Stock, Cross Slide & Tool Holder
- Southbend Mini Shop Lathe, 10 a" x 16" B.C.

SURFACE GRINDERS

- Reid Hand Feed, Mod. 618V, S/N 12187 w/ 8" x 10" Mag. Chuck
- Covell Hand Feed, S/N 10-1413 w/ 6" x 18" Mag. Chuck

COORDINATE MEASURING MACHINE

- B & S 3-Axis Mod. Reflex 454 w/ D.R.O.

MISC. MACHINERY & TOOLS

- Powermatic 20" H.D Drill Press, 3 H.P., 3 Ph.
- (7) Delta & Rockwell 15" Drill Presses, 1 Ph., Floor Type
- (2) Falls Port. Auto. Deburring Machines, 1 Ph., Mod. 11
- (3) Ass't Haas & Dayton D.E. Bench Grinders
- Empire 24" x 36" Abrasive Blast Cabinet, Mod. PF-2636
 - Custom Pneu. Heli-Coil System
 - Ridgid 300 Tripod Pipe Threader
 - (5) Tapmatic Tapping Heads
- Electric Hand Tools Including: Disc & Palm Sanders; Sander/Grinders; Sabre Saws; Pop Riveters & Etc.

INSPECTION EQUIPMENT

- American Hardness Tester • Height Gages • Micrometers • Pin Gage Sets • Dial Calipers • Indicators • Ring, Tap, Pitch & Radius Gages • Angle Plates • Stamp Sets • Granite Surface Plates & Etc. • Etc.

PLANT SUPPORT EQUIPMENT

- (6) Lee Scissor Lift Tables, 1000# Cap, Mod. XP36-10
- Vestil Lift Attachment, 4,000# Cap. • Coffing 1 Ton Elec. Hoist
 - 20' x 10' Steel Wire Cage Storage Room
 - (12) Hyd. Pallet Jacks • Johnson Bar
- Barrel, Hand & Platform Trucks • Step, Stock & Ext. Ladders
 - (50) Port. Steel Workbenches & Tables
 - (3) Port. Strapping Machines w/ Tools
 - (50) Ass't Sections Steel Pallet Racking
 - (40) Ass't Sections Metal Shelving
 - (7) 8' H.D. Steel Cantilever Racks
 - (12) Pedestal Shop Fans • Storage Cabinets
- Shop Stools • Dollies • Lockers • Drying Racks • Etc. • Etc.

FORKLIFTS

- Toyota Forklift, LPG, 4500# Cap., 189" Lift, Sideshifter, Solid Tires, ROPS, Mod. 7FG0U25
- Yale Docker Elec. Forklift, 3000# Cap., 197" Lift, Solid Tires, ROPS, 497 Hours w/ Hobart Battery-Mate Charger, 24 Volt

VEHICLE

- ★ 2008 Toyota Camry 4 Dr. Sedan, V6, AT, AC, Full Power Cruise Control, AM/FM/CD Stereo, (46,833 Miles) ★

OFFICE MACHINES

- HP DesignJet 430 Plotter
- Konica Bizhub 200 Copier • Sharp AC-800 Copier
- Toshiba DX40 Phone System w/ Handsets
- (10) Dell PC's w/ Flat Screen Monitors
- (6) HP LaserJet Printers 1505N, 2430TN, 5000N, 8000N, 9050N
- Epson FX-880 Printer • HP LaserJet 3050 All-In-One
- HP ScanJet 4100C Scanner • (3) Ass't Paper Shredders
- Calculators • Microwaves • Refrigerators • Etc. • Etc.

OFFICE FURNISHINGS

- 10' Conference Table w/ (8) Arm Chairs
- 42" Diam Conference Table w/ (4) Arm Chairs
- (5) Ass't Modular Office Units
- (10) Ass't Exec. & Sec. Desks & Chairs
- Reception Furnishings: Sofa, Arm Chairs, Tables
- (50) 4D Metal File Cabinets
- (15) 2D Metal File Cabinets • Lateral Files • Storage Cabinets • Bookcases • Tables • Wall Décor • Etc. • Etc.



VIBRATORY FINISHER



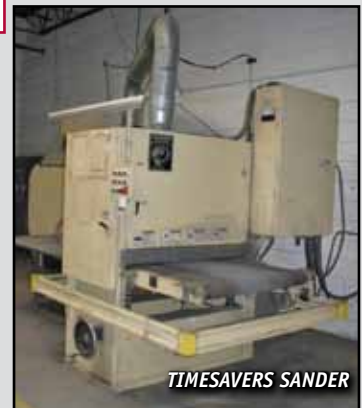
TIMESAVERS SANDER



CARBORUDUM SANDER



SAMCO SANDER



TIMESAVERS SANDER