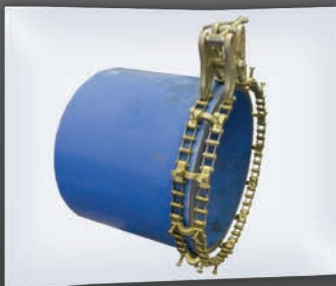
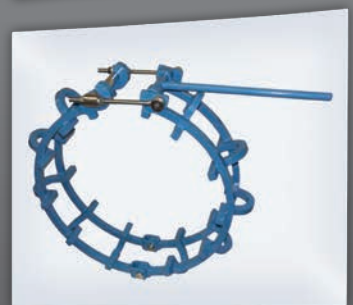
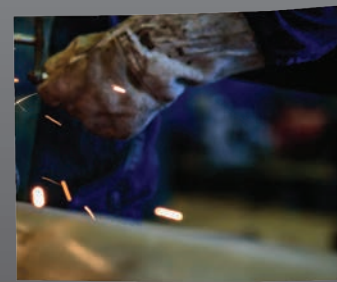




TOOLS FOR PIPE WELDING

CATALOGUE 2018/19



Welcome to DWT

The company DWT is a family owned company, located in the industrial heart of Germany. The headquarters is situated in Bottrop, where production and central stock is located. The company has been set up in the year 1987 as main supplier of the German mining companies. Nowadays we deliver products all over the world to different markets and for many different applications.



Our Business Units are as follows:

- *Sales and Service of products for assembly*
- *Sales and Service of products for industrial maintenance*
- *Production and sales of nitrogen generators for different applications*
- *Production and sales of pipe beveling and cutting equipment*

Ten years ago DWT has taken over the production of pipe beveling machines from the German steam boiler manufacturer „Deutsche Babcock“, who has developed the machines for the need and with the experience of their own people on-site. The advantages were obvious due to very low weight, high degree of flexibility and capacity. The machines are designed for a long lifetime with low spare part need and ergonomic use on-site.

Since 2002 DWT has built up the export business by focusing more on the pipe beveling and cutting market. Nowadays application engineers with sale & service offices are located in Singapore, Indonesia, Middle East, France, Malaysia, India, UAE and Russia, to support our fast growing business all over the world.

Pipe beveling equipment

The only Pipe beveling equipment designed by endusers with on-site „know how“

We created a unique product range for the need of the worldwide pipe related industry, where the materials become more and more sophisticated. Nowadays the wall thickness increases and materials are extremely difficult to machine.

The product range of the pipe beveling equipment for weld edge preparation of pipes is outstanding and very competitive.



Pipe Beveler

Pipe beveler for on-site boiler pipe edge preparation



Pipe Beveling Machines

Pipe beveler for on-site boiler pipe edge preparation



Elbow Beveling Machines

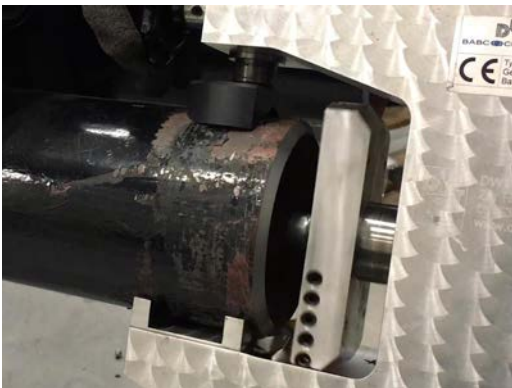
Portable add-on for our pipe beveling machines



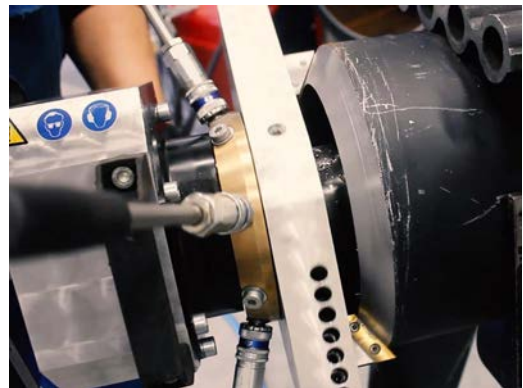
Pipe Chamfering Machine

Pipe chamfering machine for weld edge preparation

Applications:



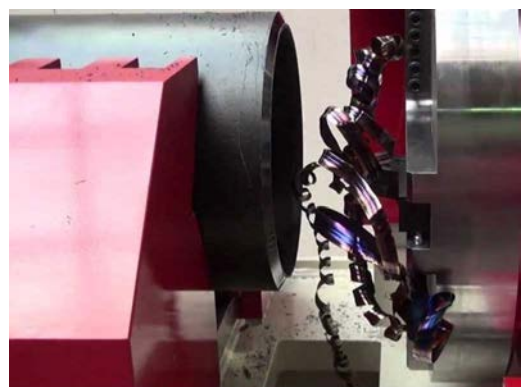
Pipe beveling



Pipe beveling



Elbow beveling

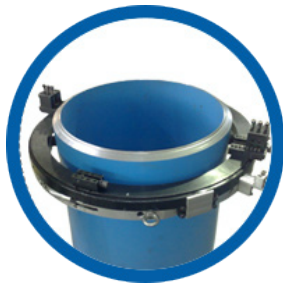


Pipe chamfering

Pipe cutting and beveling

The perfect machines for pipe cutting and beveling of heavy wall pipes

With our huge range of pipe cutting and pipe cutting and beveling machines every kind of pipe can be cut for further pipe edge preparation.



Pipe cold cutting

Pipe cold cutting and beveling machine for heavy duty pipes



Waterwall panel cutting

System for cutting waterwall panels of high pressure boilers



Chain Type Pipe Cutting Machine

Max. wall-thickness: 30 mm
Application: cutting and beveling

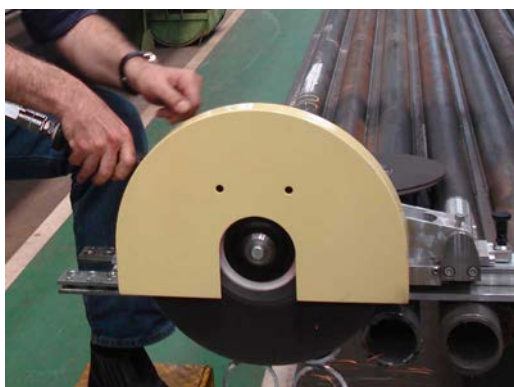
Applications:



Pipe cold cutting



Pipe cutting and beveling



Boiler panel cutting

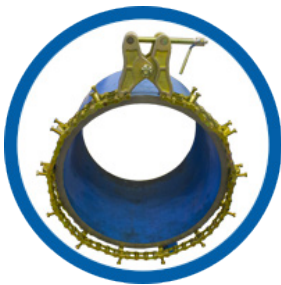


Pipe cutting

Pipe welding tools

Equipment for a perfect pipe weld

Pipe and pipeline welding work is nowadays a sophistic job, which requires the best equipment on-site and in the workshop. In the pipe welding process useful tools like pipe beveling machines, pipe cold cutting machines, pipe welding stands, pipe jacks, pipe alignment clamps, and pipe chain alignment clamps provide a better productivity for welded pipe and a more convenient and safer working environment.



Pipe Welding Alignment

Pipe Welding Clamps, Pipe Chain Clamps, External Pipe Clamps



Pipe Handling

Pipe Jacks and Pipe Carts for professional Pipe Handling



Flange repair equipment

Flange Tools, Marking and Earthing

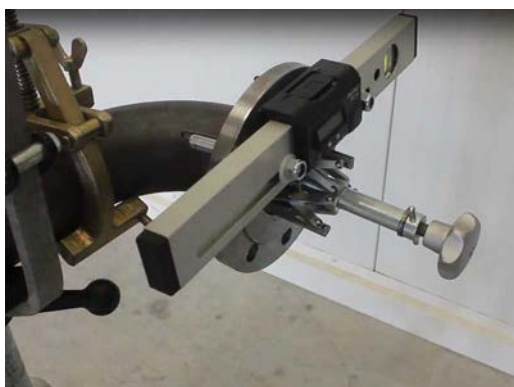
Applications:



Pipe clamping



Pipe alignment



Flange leveling



Pipe handling



1 | Pipe Welding Alignment

DWT Pipe Welding Clamps	8
Single Pipe Chain Clamps	10
Double Pipe Chain Clamps	11
Internal Spider Clamps	12
Hydraulic External Pipe Clamps	13
Mechanical Cage Pipe Clamps	15



2 | Pipe Jack Stands

Pipe Jack Stand (foldable)	18
Mobile Pipe Jack Stand - Maxi Flex	19
Pipe Jack Stand Fat Jack	19
Pipe Jack Stand Pro Roll	20

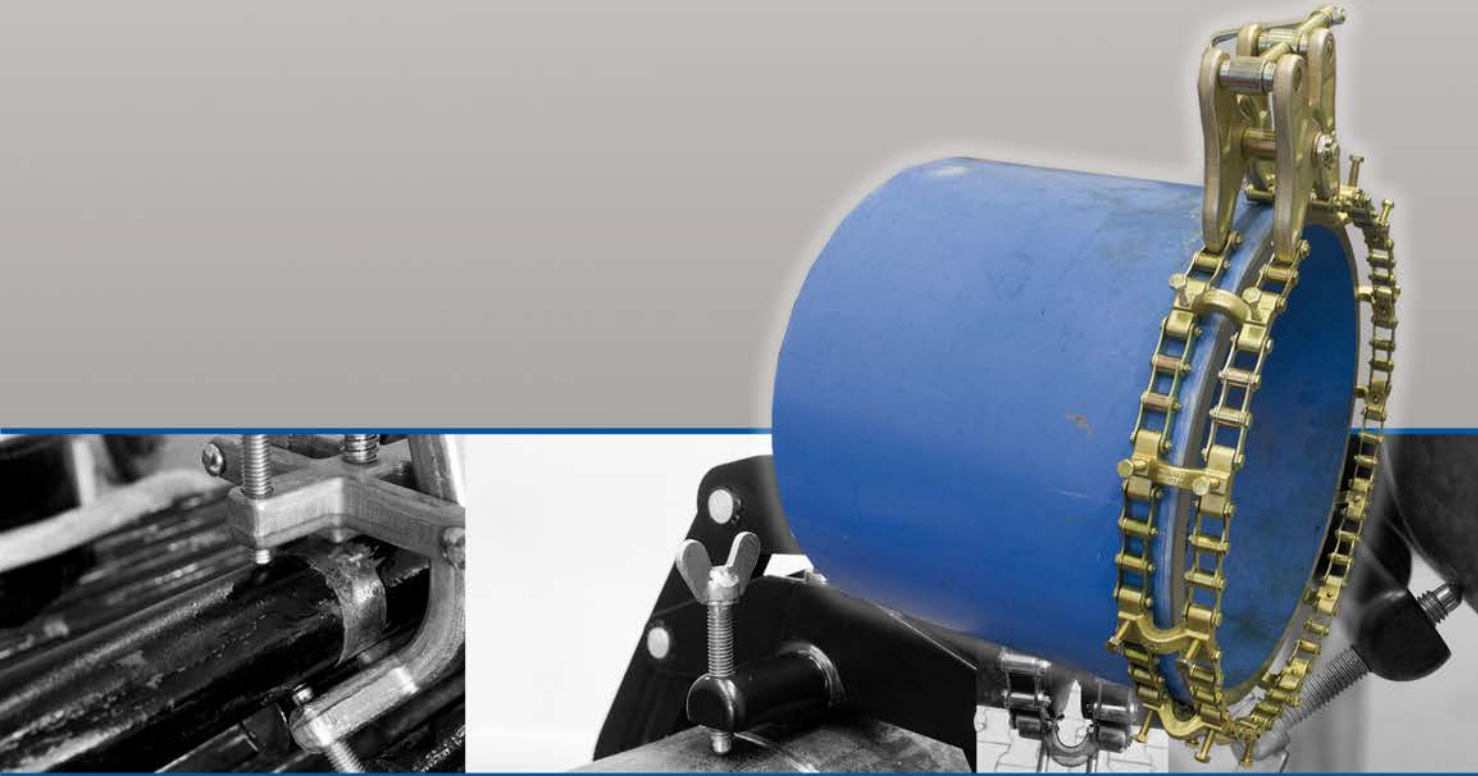


3 | Flange Repair Equipment

Centering Heads	22
Flange Levelers	23
Rotary Ground Clamps	23



Pipe Chain Clamps and several Pipe Alignment Clamp for pipe welding alignment applications.



Due to its unique design, the pipe alignment clamp ensures that the clamping forces are evenly spread around the pipe in welding process, because the distance between clamping points are exactly the same. This is true for all pipe dimensions within the range of the clamp (1 to 14 inches).

The adjusting screws have stainless steel balls at their ends. This eliminates the scratching of the objects to be welded, and no corrosion will occur.

The pipe alignment clamp can be used for the welding of all kinds of materials such as carbon steel, stainless steel, duplex, super duplex and titanium.

Steel Pipe Welding Clamps

Clamping Range: 1 - 14 inch (25 - 355 mm)

- For centering and alignment pipes in welding process
- Easy clamping, adjustment
- Clamping screws with stainless steel ball head



Stainless Steel Pipe Welding Clamps

Clamping Range: 1 - 14 inch (26 - 355 mm)

- For centering and alignment pipes in welding process
- Easy clamping, adjustment
- Stainless steel contact points - avoids corrosion
- Clamping screws with stainless steel ball head

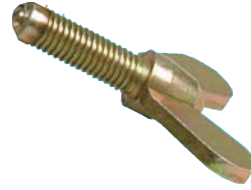


Part.-No.	Description	Range (inch)	Range (mm)	Weight (kg)	Weight (lb)	Material
RG350004	Pipe welding clamp steel DWT SC13	1 - 3	25 - 76	1,5	3.00	Steel
RG350005	Pipe welding clamp steel DWT SC25	2 - 5	51 - 127	3,1	6.83	Steel
RG350006	Pipe welding clamp steel DWT SC47	4 - 7	102 - 177	3,3	7.28	Steel
RG350007	Pipe welding clamp steel DWT SC59	5 - 9	127 - 228	6,9	15.21	Steel
RG350008	Pipe welding clamp steel DWT SC1014	10 - 14	254 - 355	9,0	19.84	Steel
RG350012	Pipe welding clamp for SS pipes DWT SS13	1 - 3	27 - 76	1,0	2.00	Stainless steel
RG350013	Pipe welding clamp for SS pipes DWT SS26	2 - 6	60 - 168	3,5	7.00	Stainless steel
RG350014	Pipe welding clamp for SS pipes DWT SS614	6 - 14	168 - 355	8,0	16.00	Stainless steel

Accessories

Screw for pipe welding clamps

- Replacement screws suitable for pipe welding clamps
- With stainless steel balls at their ends

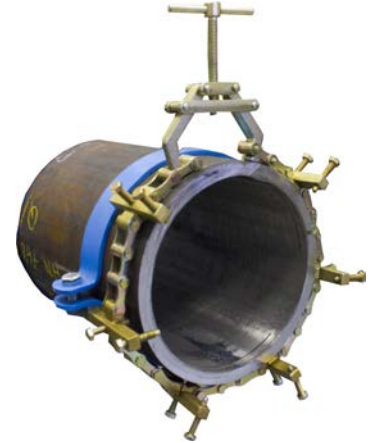


Part.-No.	Description
RG350009	Screw for DWT Steel Clamp SC13
RG350010	Screw for DWT Steel Clamp SC25 & 47
RG350011	Screw for DWT Steel Clamp SC59 & 1014
RG350096	Screw for DWT Stainless Steel Clamp SS13
RG350097	Screw for DWT Stainless Steel Clamp SS26
RG350098	Screw for DWT Stainless Steel Clamp SS614

Single Pipe Chain Clamps

Range: 8 - 60 inch (203 - 1524 mm)

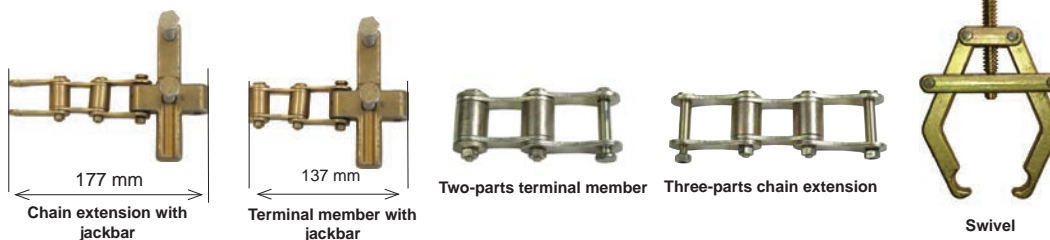
- Clamping range 8 - 60"
- Max. wallthickness: 12,7 mm
- By removing the chain the links und jackbars the chain adjusts to the several pipe diameters



Part.-No.	Description	Range (inch)	No. jackbars
RG350040	Single manual pipe chain clamp	8 - 10"	5
RG350041	Single manual pipe chain clamp	8 - 12"	6
RG350042	Single manual pipe chain clamp	8 - 16"	7
RG350043	Single manual pipe chain clamp	8 - 20"	9
RG350044	Single manual pipe chain clamp	8 - 24"	11
RG350045	Single manual pipe chain clamp	8 - 28"	13
RG350046	Single manual pipe chain clamp	8 - 32"	14
RG350047	Single manual pipe chain clamp	8 - 36"	16
RG350048	Single manual pipe chain clamp	8 - 40"	18
RG350049	Single manual pipe chain clamp	8 - 44"	19
RG350050	Single manual pipe chain clamp	8 - 48"	21
RG350051	Single manual pipe chain clamp	8 - 52"	23
RG350052	Single manual pipe chain clamp	8 - 56"	25
RG350053	Single manual pipe chain clamp	8 - 60"	26

Accessories

Spare parts for single manual pipe chain clamps



Part.-No.	Description
RG350067	Single chain clamp for medium wall, 1275 mm long, without swivel, 7 jackbars
RG350068	Swivel
RG350069	Single jackbar
RG350070	Two-parts Terminal member
RG350071	Three-parts Chain extension
RG350072	Terminal member with jackbar, 137 mm long
RG350073	Chain extension, 177 mm long with jackbar

Double Pipe Chain Clamps

Range: 8 - 60 inch (203 - 1524 mm)

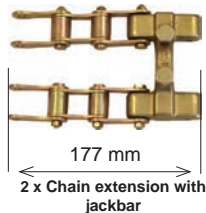
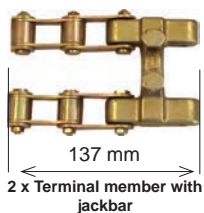
- Clamping range 8 - 60"
- Max. wallthickness: 12,7 mm
- By removing the chain the links und jackbars the chain adjusts to the several pipe diameters



Part.-No.	Description	Range	No. jackbars
RG350054	Double manual pipe chain clamp	8 - 12"	6
RG350055	Double manual pipe chain clamp	8 - 16"	7
RG350056	Double manual pipe chain clamp	8 - 20"	9
RG350057	Double manual pipe chain clamp	8 - 24"	11
RG350058	Double manual pipe chain clamp	8 - 28"	13
RG350059	Double manual pipe chain clamp	8 - 32"	14
RG350060	Double manual pipe chain clamp	8 - 36"	16
RG350061	Double manual pipe chain clamp	8 - 40"	18
RG350062	Double manual pipe chain clamp	8 - 44"	19
RG350063	Double manual pipe chain clamp	8 - 48"	21
RG350064	Double manual pipe chain clamp	8 - 52"	23
RG350065	Double manual pipe chain clamp	8 - 56"	25
RG350066	Double manual pipe chain clamp	8 - 60"	26

Accessories

Spare parts for double manual pipe chain clamps



Part.-No.	Description
RG350074	Double chain clamp for medium wall, 1275 mm long, without swivel, 7 jackbars
RG350075	Swivel
RG350076	Single jackbar
RG350070	Two-parts terminal member
RG350071	Three-parts chain extension
RG350077	2 x terminal member, 137 mm long with jackbar
RG350078	2 x chain extension, 177 mm long with jackbar

Internal Spider Clamp (ISC) for welding flanges to pipes. The clamp has a range from 2.25" (56 mm) and up to 37" (940 mm). The ISC can be used for stainless steel and carbon steel pipes because the contact points of the systems are made of stainless steel.

Internal Pipe Spider Clamps ISC

Pipe sizes: 2,25" - 37"

- The ISC Clamps can be used on all types of materials as only stainless steel comes in contact with the pipe.



Part.-No.	Description	Range I.D.		Weight	
		mm	inch	kg	lb
RG350015	Spider pipe clamp ISC56140	56 - 140	2.5 - 5.5	1,35	2.7
RG350016	Spider pipe clamp ISC85220	85 - 220	3.3 - 8.6	4	8
RG350017	Spider pipe clamp ISC120350	120 - 350	4.7 - 13.8	12	24
RG350018	Spider pipe clamp ISC180520	180 - 520	7 - 20.4	27	54

Internal Spider Elbow Clamp (ISEC) suitable for clamping flanges to bends. Fast and easy tool. The ISEC can be used for stainless steel and carbon steel pipes because the contact points of the systems are made of stainless steel.

Internal Pipe Spider Clamps ISEC

Pipe sizes: 2,25" - 37"

- The IMF Clamps can be used on all types of materials as only stainless steel comes in contact with the pipe.



Part.-No.	Description	Range I.D.		Weight	
		mm	inch	kg	lb
RG350019	Spider elbow pipe clamp ISEC56115	56 - 115	2.2 - 4.5	1	2
RG350020	Spider elbow pipe clamp ISEC85195	85 - 195	3.3 - 7.6	3	6
RG350021	Spider elbow pipe clamp ISEC120315	120 - 315	4.7 - 12.4	10	20
RG350022	Spider elbow pipe clamp ISEC180520	180 - 520	7 - 20.4	24	48

Our Hydraulic External Pipe Clamps have a wide gap, which allows the welding of the root up to 90% before removing the clamp. Edge misalignment can be eliminated by means of jackscrews or a wedge which is placed under the alignment bridge. The air gap can be adjusted by means of chisel. The hydraulic cylinder, which is available as an option, operates in all positions and can be used for all pipe diameters.

The external line-up clamp is available in a medium, heavy and heavy-duty version for pipes from 12-80 inch diameter.

Hydraulic External Pipe Clamps

Medium version; For pipe 12 - 80 inch

- The medium external pipe clamps have a wide gap, allowing welding of the root up to 90% before removing the clamp. Edge misalignment can be eliminated by means of jackscrews or a wedge which is placed under the alignment bridge.



Part.-No.	Size mm/inch	OD Pipe diameter mm
11 001 0323	300 / 12"	323,9
11 001 0355	350 / 14"	355,6
11 001 0406	400 / 16"	4,6,9
11 001 0457	450 / 18"	457,0
11 001 0508	500 / 20"	508,0
11 001 0610	600 / 24"	610,0
11 001 0711	700 / 28"	711,0
11 001 0762	750 / 30"	762,0
11 001 0813	800 / 32"	813,0
11 001 0864	850 / 34"	864,0
11 001 0914	900 / 36"	914,0
11 001 1016	1000 / 40"	1016,0
11 001 1067	1050 / 42"	1067,0
11 001 1118	1100 / 44"	1118,0
11 001 1120	1200 / 48"	1120,0
11 001 1320	1300 / 52"	1320,0
11 001 1420	1400 / 56"	1420,0
11 001 1520	1500 / 60"	1520,0
11 001 1620	1600 / 64"	1620,0
11 001 1720	1700 / 68"	1720,0
11 001 1820	1800 / 72"	1820,0
11 001 2020	2000 / 80"	2020,0

Hydraulic External Pipe Clamp

Heavy/Heavy-duty version; For pipes 16 - 64 inch

- The hydraulic cylinder works in vertical position and can be exchanged easily, if necessary. The alignment bridges have a widegap, allowing to weld the root up to 90% before removing the clamp. Hydraulic jack 10 t. For gas pipelines (fine-grained steel) and for thick-walled pipes made of sturdy flat steel.

Part.-No.	Size mm/inch	OD Pipe diameter mm
11 SK1 0406	400 / 16"	406,9
11 SK1 0457	450 / 18"	457,0
11 SK1 0508	500 / 20"	508,0
11 SK1 0610	600 / 24"	610,0
11 SK1 0711	700 / 28"	711,0
11 SK1 0762	750 / 30"	762,0
11 SK1 0813	800 / 32"	813,0
11 SK1 0864	850 / 34"	864,0
11 SK1 0914	900 / 36"	914,0
11 SK1 1016	1000 / 40"	1016,0
11 SK1 1067	1050 / 42"	1067,0
11 SK1 1118	1100 / 44"	1118,0
11 SK1 1220	1200 / 48"	1220,0
11 SK1 1320	1300 / 52"	1320,0
11 SK1 1420	1400 / 56"	1420,0
11 SK1 1520	1500 / 60"	1520,0
11 SK1 1620	1600 / 64"	1620,0



The hydraulic cylinder for our external pipe clamps works in every position and is suitable for all pipe diameters. The weight of this special cylinder is only 15,3 kg.

Hydraulic Cylinder

Suitable for all diameters



Mechanical Cage Clamp DN 80 - DN 400 with bridges light version. This external line-up clamp is particularly suitable for vertical-up tackwelding by applying autogenous or arc welding techniques. By means of an eccentric, both pipe ends can be aligned by means of the bridges without any hi-lo offset of the pipe edges.

Mechanical Cage Pipe Clamps - light

Pipe Range: 3,5" - 16"

- The mechanical cage pipe clamps - light version are particularly suitable for vertical-up tackwelding by applying autogenous or arc welding techniques. By means of eccentric, both pipe ends can be aligned through the bridges without any offset of the pipe edges.



Part.-No.	Size mm/inch	OD Pipe diameter mm
11 003 0088	80 / 3,5"	88,9
11 003 0114	100 / 4"	114,3
11 003 0125	125 / 5"	139,7
11 003 0168	150 / 6"	168,3
11 003 0219	200 / 8"	219,1
11 003 0273	250 / 10"	273,0
11 003 0323	300 / 12"	323,9
11 003 0355	350 / 14"	355,6
11 0030406	400 / 16"	406,0

Mechanical Cage Pipe Clamps - heavy

Pipe Range: 4" - 20"

- The mechanical cage pipe clamps with bridges and jackscrews allow to align pipes in a way that flush tack-welding is possible without an offset of the pipe edges. Broad bridges allow the production of 80 percents of the root pass without removing the clamp.



Part.-No.	Size mm/inch	OD Pipe diameter mm
11 004 0610	600 / 24"	610,0
11 004 0711	700 / 28"	711,0
11 004 0762	750 / 30"	762,0
11 004 0813	800 / 32"	813,0
11 004 0914	900 / 36"	914,0
11 004 1016	1000 / 40"	1016,0
11 004 1067	1050 / 42"	1067,0
11 004 1118	1100 / 44"	1118,0
11 004 1220	1200 / 48"	1220,0
11 004 1320	1300 / 52"	1320,0
11 004 1420	1400 / 56"	1420,0
11 004 1520	1500 / 60"	1520,0
11 004 1620	1600 / 64"	1620,0

Mechanical Cage Pipe Clamps - heavy duty

Pipe Range: 24" - 64"

- The mechanical cage pipe clamps with bridges and jackscrews allow to align pipes in a way that flush tack-welding is possible without an offset of the pipe edges. Broad bridges allow the production of 80 percents of the root pass without removing the clamp.



Part.-No.	Size mm/inch	OD Pipe diameter mm
11 004 0114	100 / 4"	114,3
11 004 0125	125 / 5"	133,0, 139,7
11 004 0168	150 / 6"	159,0, 168,3
11 004 0219	200 / 8"	219,1
11 004 0273	250 / 10"	273,0
11 004 0323	300 / 12"	323,9
11 004 0355	350 / 14"	355,6
11 004 0406	400 / 16"	406,0
11 004 0457	450 / 18"	457,0
11 004 0508	500 / 20"	508,0



Pipe jack stands for pipe handling.



All pipe stands are delivered with a standard V-head and safety ring to prevent from sudden collaps and from hand injuries. The foldable Type allows easy storage and transportation. The carrying capacity of the Pipe Stand is 1135 kg. Choice of interchangeable head styles. (Roller kits)

Pipe Jack foldable

Pipe stand with foldable legs

- Capacity: 2,500 lb (1,135 kg)
- Min. height: 750 mm
- Max. height: 1.200 mm
- Weight: 11 kg



Part.-No.	Description	Weight		Min. Height		Max. Height	
		kg	lb	cm	inch	cm	inch
RG350000	Pipe stand, foldable legs DWT-FOLD	11	24,3	71	27,9	125	49,2

Accessories

Wheel and ball heads for foldable pipe stand



Stainless steel balls



Polyethelene rollers



Steel rollers

Part.-No.	Description	Capacity		Pipe Size		Weight (1 pc.)	
		kg	lb	mm	inch	kg	lb
RG350001	Stainless steel balls	925	2040	12 - 610	1/2 - 24	1,8	3.9
RG350002	Polyethylene rollers	450	992	12 - 610	1/2 - 24	1,1	2.4
RG350003	Steel rollers	450	992	10- 610	3/8 - 24	1,3	2.8

*two of each piece will be needed.

The versatile Maxi Flex - mobile pipe stand is the ideal fabricator stand. The large 300 mm vee head and heavy duty five-legged design offers the welder a maximum margin of safety on pipe up to 900 mm. With optional accessories, such as the heavy duty casters and Hold-Down Device, pipe weighing 2.000 kg per Maxi Flex can be wheeled with ease from storage rack... to welding bay... and onto the shipping dock. This means the load is lifted only once, resulting in a reduction of 50% or more in handling costs. The Maxi Flex - mobile pipe stand is great for leveling loads for fit-up, or use with a pipe rotator.

Pipe Jack Stand Maxi Flex

Mobile pipe stand

- **Min. height: 775 mm**
- **Max. height: 1.080 mm**
- **Weight: 55 kg**

Part.-No.	Description	Weight	Max. height
RG350090	Pipe stand MAXI FLEX	55	1.080 mm

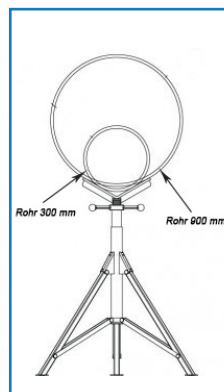


Mobile pipe stands: In the shop or on the job, moving long lengths of pipe is a snap with Maxi Flex Stand!

Pipe Jack Fat Jack

Foldable for storage

- **Capacity: 2.270 kg**
- **Min. height: 810 mm**
- **Max. height: 1.320 mm**
- **Weight: 17,6 kg**

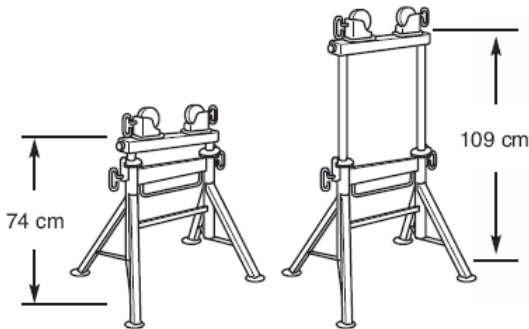


Part.-No.	Description	Weight	Min. height	Max. height	Weight capacity	Max. pipe O.D.
RG350080	Fat Jack with Vee head	17,6 kg	810 mm	1.820 mm	2.270 kg	1.320 mm

Pipe Jack Stand Pro Roll

Pipe stand with adjustable height

- Capacity: 900 kg
- Min. height: 740 mm
- Max. height: 1.090 mm
- Weight: 16,4 kg
- Pipe OD: 12 - 900 mm



Part.-No.	Description	Weight	Min. pipe O.D.	Max. pipe O.D.
RG350085	Pro Roll	16,4 kg	12 mm	900 mm
RG350086	Pro Roll - Tableversion	10,9 kg	12 mm	900 mm

*without Quick Change Rollers

Accessories

Quick change roller housings pro roll

- Capacity: 900 kg (steel-& stainless steel rollers), 550 kg (rubber rollers)
- Weight: 3,6 kg (steel-& stainless steel rollers) 3,2 kg (rubber rollers)



Steel



Rubber



Stainless steel

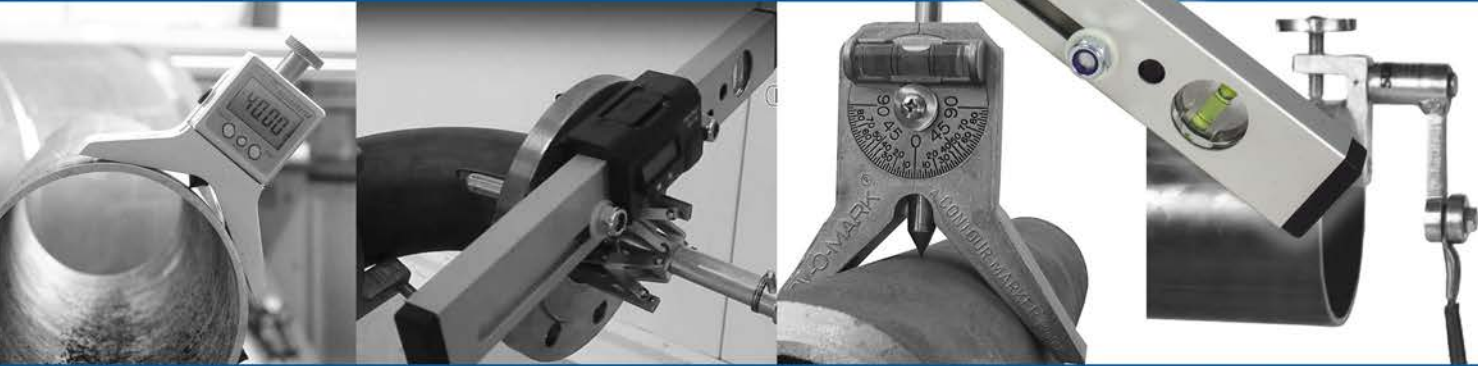


Stainless steel transfer heads

Part.-No.	Description	weight / kg
RG350087	Quick change housing with rubber wheels	3,2
RG350088	Quick change housing with steel wheels	3,6
RG350089	Quick change housing with stainless steel wheels	3,6
RG350091	Quick change housing with stainless steel ball transfer head	3,6



Flange Tools, Marking and Earthing.



Finding the exact position on a pipe has always been a problem. DWT Centering Head solve this problem in an easy manner. It can also be used to find any given points at angles from the top of the pipe. Can be used on all pipes from 1/2" and smaller.

Centering Head

Suitable for pipe diameter 1/2" - 5"

- With graduation and protractor dragonfly for scribing
- Adjustable protractor level with graduation
- Hardened centering pin
- For larger pipe diameters available on request

Part.-No.	Description
RG350032	Centering Head DWT

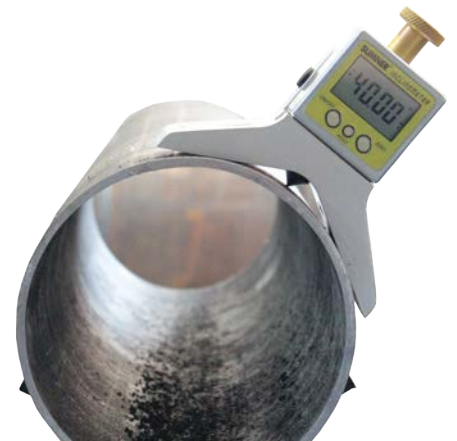


Centering Head Digital

Removable, magnetic tilt sensor

- Easy to read digital display
- Spring-driven firing pin for scribing
- Measurement in real time
- Easy to calibrate

Part.-No.	Description
RG350033	Centering Head DWT, digital



WT Flange Leveler is always a good tool to have. The WT Flange Leveler can be used for flanges with bolt holes from 16 mm and larger. With this design you avoid the chance of misplacing loose parts, and you will have no need of using adjusting tools.

Flange Leveler

Stepless bolt distance: 60 - 260 mm

- Measuring range from 0° - 90°
- Resolution of 0.05° (1,0 mm/M)
- Accuracy of ± 0.05° at 0° & 90°
- Auto-reverse reading of LCD Display
- Bolt length: 75 mm



Part.-No.	Description	Length in cm	Height in cm	Depth in cm	Length of pin in cm
RG350030	Flange Leveler	40	5	2,3	7,5

Flange Leveler Digital

Stepless bolt distance: 60 - 260 mm

- Length: 400 mm
- Height: 50 mm
- Depth: 23 mm
- Bolt length: 75 mm

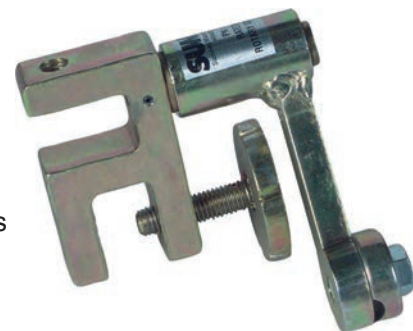


Part.-No.	Description	Length in cm	Height in cm	Depth in cm	Length of pin in cm
RG350031	Digital Flange Leveler	40	5	2,3	7,5

Rotary Ground Clamp

Earth Clamp 400 Amp

- Rotary head turns with the pipe - puts an end to ground lead twist, tangle and wear
- Provides quick, positive ground for roll-out welding of pipe and fittings - eliminates weld pinholes caused by poor grounding
- Attaches and detaches in seconds
- Makes up ground leads three ways - lug - clamp-on and bare cable
- Positive anti-arc bearings take loads up to 400 amps



Part.-No.	Description	AMP	Weight (kg)	Weight (lb)
RG350034	Rotary earth clamp 400 Amp	400	2,3	4,6



Head office:

DWT GmbH

Wilhelm-Tenhagen-Str. 5
 46240 Bottrop
 Tel: +49(0)2041-77144-0
 Fax: +49(0)2041-77144-99
 eMail: info@dwt-gmbh.de

Sales & Service office:

DWT India
 DWT Malaysia
 DWT France
 DWT Russia
 DWT Middle East



The DWT GmbH head office is in the industrial heart of Germany. The machines are produced by a competent team and are delivered in the whole world.

21. Dezember 2017, 4:34 nachm.