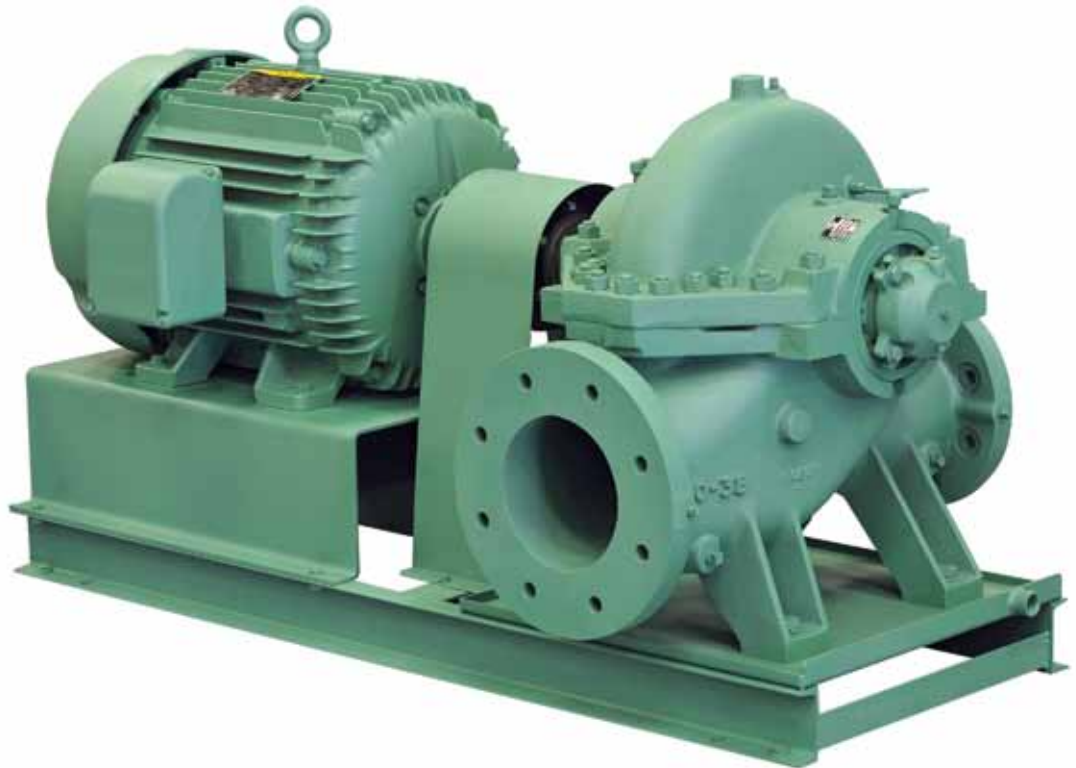


TA Series – Single Stage Double Suction Horizontal Split Case Pump

Taco's TA Series Pumps feature heavy-duty, long lasting quality for a variety of water circulation applications. Proven performance and longevity, balanced double-entry impeller design, and modular components are just a few of the TA Pumps' attributes. As a result, they require minimal maintenance but are easy to service when needed.



Features & Benefits

Six Major Benefits for TA Series Pump Users

- Maximum operating pressure of 300 PSI. The rugged, heavy-duty casing design allows higher working pressures
- Quick access for service and maintenance. The top half of the casing is easily removed to allow service of rotating unit without disturbing piping system.
- Low NPSH requirements and increased efficiency. The impeller is specifically designed to assure minimum NPSH and maximum pump efficiency as well as stable performance throughout the operating range.
- Compact arrangement increases seal and bearing life. The mechanical seal option reduces the shaft length and minimizes shaft deflection, thereby increasing both seal and bearing life.
- Balanced axial loads for maximum bearing life. The double suction design virtually eliminates axial thrust and reduces bearing loading. The bearings are heavy-duty type, grease lubricated.
- No need to replace casing if wear rings require service. The case wear rings are separate from the case itself and are replaceable.

Heavy-Duty Casing For Greater Strength

Extra heavy construction of the pump casing provides greater structural integrity and reduces the risk of distortion. The pump feet are cast integrally with the bottom half of the volute casing and extended to provide support to the inserts which carry the pump bearings.

Maintenance is Easy and Fast

With the top half of the casing removed, the complete pump rotating assembly can be withdrawn without disturbing the piping system. Pump inlet and outlet

flanges are cast in the bottom half casing. Flanges and casing are tapped and plugged for gauge and priming connections. An air release valve and flushing connections are provided in the upper casing. The top and bottom half casings are aligned by dowels, sealed by a gasket and bolted together.

High Efficiency Impeller

The impeller is generally of the double-entry type with Francis vanes, keyed to the shaft and locked in position. The impeller hubs are designed to accommodate impeller wear rings, if required. Impellers are balanced dynamically and hydraulically. Passage ways are smoothed for maximum efficiency.

Over 300 models, ranging from 1/40 HP to 400 HP offer the maximum flexibility to select the optimum pump design for the specific system requirements.

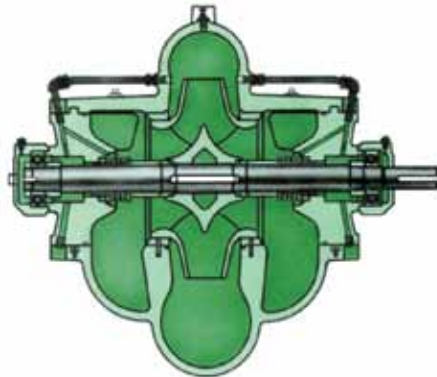
The full range of Taco products is more than pumps. Taco is also your single source company for a wide variety of HVAC and other hydronic specialty components including; multi-purpose valves, suction diffusers, heat transfer equipment, diaphragm tanks and more.

The TA Series Split Case Pump model represents a major advance in pump design. By utilizing a modular construction technique, pump performance from 60 GPM up to 6,000 GPM is available from just three basic bearing and shaft modules.

Modular construction results in:

- Multiple seal and construction options for application flexibility.
- Simplified maintenance
- Design flexibility to accommodate future performance needs.

TA Series Pump Construction & Specifications



Standard Mechanical Seal

MATERIALS OF CONSTRUCTION		
	Standard	Optional
Casing	Cast Iron	---
Impeller	Bronze	Cast Iron
Wear Ring	Bronze	Cast Iron
Shaft	Carbon Steel	Stainless Steel
Insert	Cast Iron	---
Shaft Sleeve	Bronze	Stainless Steel
OPERATING SPECIFICATIONS		
	Standard	Optional
Pressure	300 PSI Maximum Operating Pressure (125 ANSI or 250 ANSI Flanges Standard)	---
Mechanical Seal Temperature	250°F	300°F
Packing Temperature	250°F	300°F
Wear Rings	Case Wear Rings	Impeller Wear Rings
Seal Flushing	Recirculation Line	Filter & Abrasive Separators
Motors	All Standard NEMA Motors (T or TS)	---

Additional Options

- Drip Type Base
- Two Rotation Options
- Packed Stuffing Box
- Balanced Mechanical Seals



**Optional
Packing**

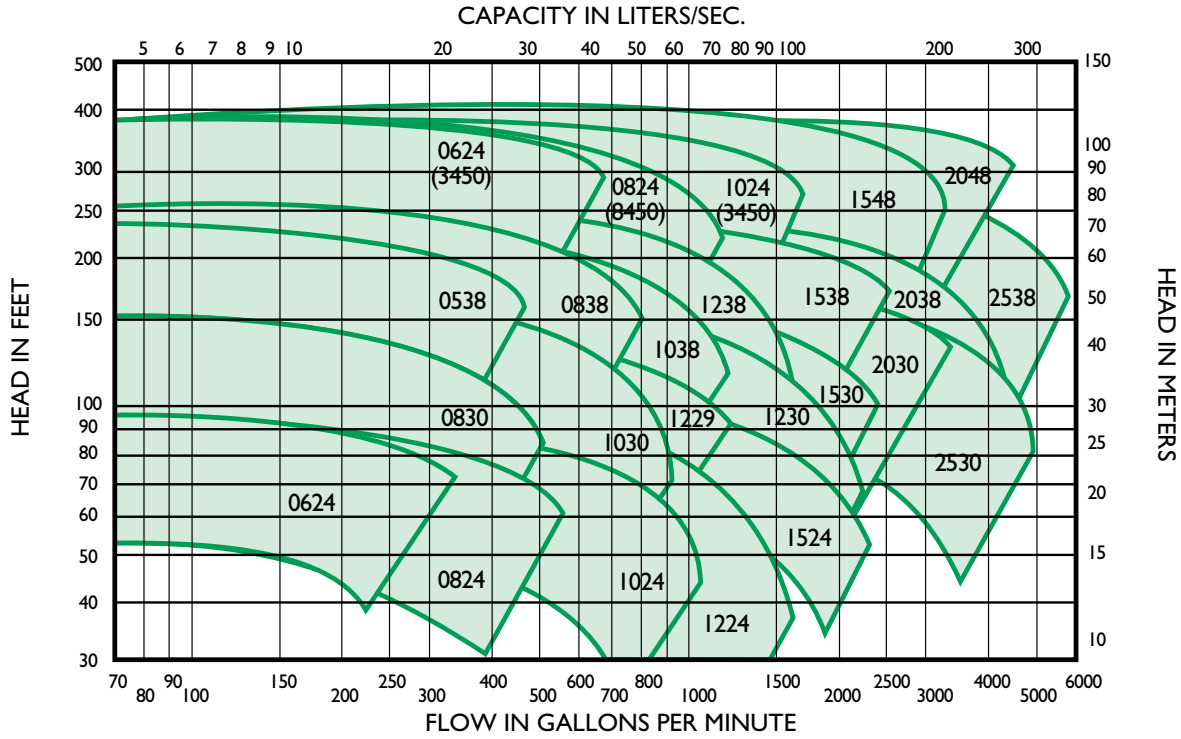


**Optional
Balanced Seal**

Commercial Hydronic Application Information

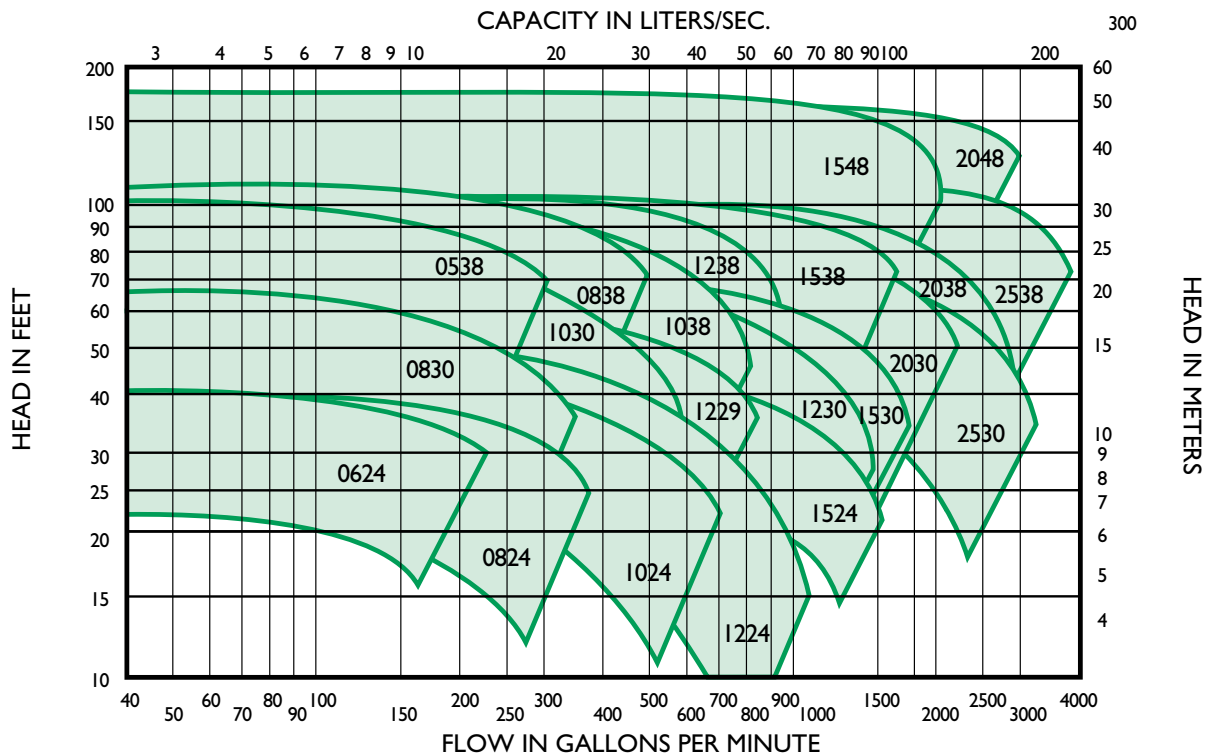
TA Series Performance Field 1750 RPM

Curves also available on TacoNet.

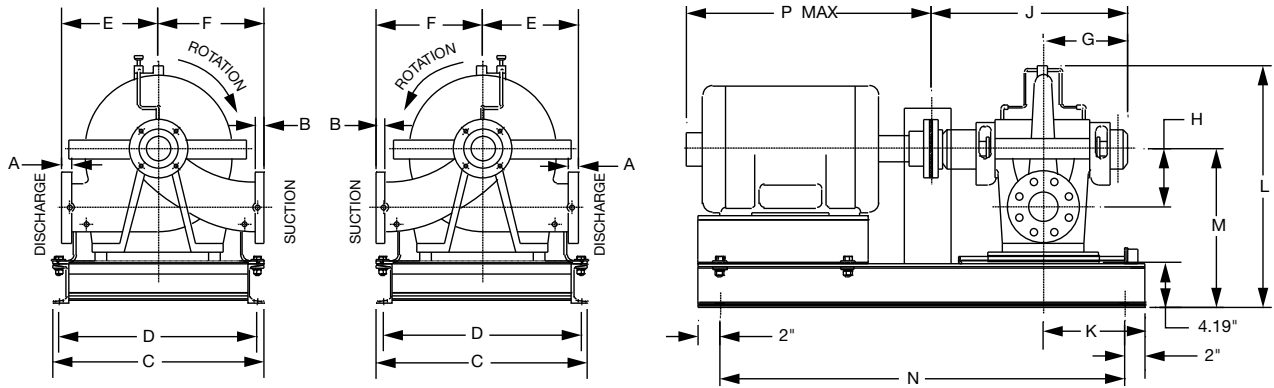


TA Series Performance Field 1150 RPM

Curves also available on TacoNet.



TA Series Dimensions



English dimensions are in inches. Metric dimensions are in millimeters. Metric data is presented in ().
 Dimensions are subject to change without notice. Do not use for construction purposes unless certified.

DIMENSIONS

Motor dimensions are approximate and vary by manufacturer and motor type.

Model No. Flange Size	Motor Frame	A DISCHARGE		B SUCTION		C	D	E	F	G	H	J	K	L	M	N	P
		ANSI Class 125	ANSI Class 250	ANSI Class 125	ANSI Class 250												
0538 3 x 2 (76 x 51)	213T	0.62 (16)	0.88 (22)	0.75 (19)	1.12 (28)	21.17 (538)	19.92 (506)	11.00 (279)	13.98 (355)	9.68 (246)	6.69 (170)	22.19 (564)	9.5 (241)	25.50 (648)	16.00 (406)	38.0 (965)	20.5 (521)
	215T																23.2 (589)
	254T																27.8 (706)
	284T																27.8 (706)
	286T																27.8 (706)
0624 3 x 2.5 (76 x 64)	145T	0.69 (18)	1.00 (25)	0.75 (19)	1.12 (28)	21.17 (538)	19.92 (506)	8.88 (226)	11.02 (280)	9.68 (246)	5.12 (130)	22.19 (564)	9.5 (241)	21.31 (541)	14.00 (356)	38.0 (965)	15.2 (386)
	182T																18.5 (470)
	184T																20.5 (521)
	213T																23.2 (589)
	215T																27.8 (706)
	256T																27.8 (706)
	284TS																30.3 (770)
	286TS																33.4 (848)
	324TS																30.3 (770)
	326TS																33.4 (848)
0824 4 x 3 (102 x 76)	182T	0.75 (19)	1.12 (28)	0.94 (24)	1.25 (32)	21.17 (538)	19.92 (506)	9.06 (230)	10.62 (270)	9.68 (246)	5.12 (130)	22.19 (564)	9.5 (241)	21.31 (541)	15.19 (386)	38.0 (965)	18.5 (470)
	184T																20.5 (521)
	213T																23.2 (589)
	215T																27.8 (706)
	254T																27.8 (706)
	286TS					30.3 (770)											
	324TS					33.4 (848)											
	326TS					30.3 (770)											
	364TS					33.4 (848)											
	365TS					33.4 (848)											
404TS	50.0 (1270)																
405TS	38.3 (973)																
0830 4 x 3 (102 x 76)	184T	0.75 (19)	1.12 (28)	0.94 (24)	1.25 (32)	21.17 (538)	19.92 (506)	10.81 (275)	11.44 (291)	9.68 (246)	5.88 (149)	22.19 (564)	9.5 (241)	23.31 (592)	15.19 (386)	38.0 (965)	18.5 (470)
	213T																20.5 (521)
	215T																23.2 (589)
	254T																27.8 (706)
	254T																27.8 (706)
0838 4 x 3 (102 x 76)	213T	0.75 (19)	1.12 (28)	0.94 (24)	1.25 (32)	21.17 (538)	19.92 (506)	10.81 (275)	11.44 (291)	9.68 (246)	5.88 (149)	22.19 (564)	9.5 (241)	26.87 (682)	16.81 (427)	38.0 (965)	20.5 (521)
	215T																23.2 (589)
	254T																27.8 (706)
	256T																27.8 (706)
	284T																30.3 (770)
	286T																30.3 (770)

TA Series Dimensions, continued

DIMENSIONS

Motor dimensions are approximate and vary by manufacturer and motor type.

Model No. Flange Size	Motor Frame	A DISCHARGE		B SUCTION		C	D	E	F	G	H	J	K	L	M	N	P				
		ANSI Class 125	ANSI Class 250	ANSI Class 125	ANSI Class 250																
1024 6 x 4 (152 x 102)	184T	0.94 (24)	1.25 (32)	1.00 (25)	1.44 (37)	21.17 (538)	19.92 (506)	9.81 (249)	12.19 (310)	11.81 (300)	6.69 (170)	27.75 (705)	9.5 (241)	27.00 (686)	17.57 (446)	40.0 (1016)	18.5 (470)				
	213T																20.5 (521)				
	215T																23.2 (589)				
	254T																50.0 (1270)				
	256T																54.0 (1372)				
	364TS					33.4 (848)															
	365TS					38.3 (973)															
	404TS					44.6 (1133)															
	405TS					64.0 (1626)															
444TS	27.17 (690)	25.92 (658)																			
1030 5 x 4 (127 x 102)	213T	0.94 (24)	1.25 (32)	0.94 (24)	1.38 (35)	21.17 (538)	19.92 (506)	10.80 (274)	12.62 (321)	9.68 (246)	6.69 (170)	22.19 (564)	9.5 (241)	25.87 (657)	16.81 (427)	38.0 (965)	20.5 (521)				
	215T																23.2 (589)				
	254T																48.0 (1219)				
	256T																27.8 (706)				
	284T																30.3 (770)				
	286T																30.3 (770)				
324T	23.2 (589)																				
1038 5 x 4 (127 x 102)	254T	0.94 (24)	1.25 (32)	0.94 (24)	1.38 (35)	21.17 (538)	19.92 (506)	13.75 (349)	13.38 (340)	11.81 (300)	7.50 (191)	27.75 (705)	9.5 (241)	28.50 (724)	17.57 (446)	50.0 (1270)	27.8 (706)				
	256T																30.3 (770)				
	284T																33.4 (848)				
	286T																54.0 (1372)				
	324T																23.2 (589)				
	326T																27.8 (706)				
	364T																30.3 (770)				
365T	33.4 (848)																				
1224 6 x 5 (152 x 127)	213T	0.94 (24)	1.38 (35)	1.00 (25)	1.44 (37)	21.17 (538)	19.92 (506)	9.81 (249)	13.78 (350)	10.94 (278)	7.08 (180)	24.63 (626)	9.5 (241)	26.50 (673)	17.49 (444)	38.0 (965)	20.5 (521)				
	215T																23.2 (589)				
	254T																48.0 (1219)				
	256T																27.8 (706)				
	284T																30.3 (770)				
286T	30.3 (770)																				
1229 6 x 5 (152 x 127)	213T	0.94 (24)	1.38 (35)	1.00 (25)	1.44 (37)	21.17 (538)	19.92 (506)	11.44 (291)	12.19 (310)	9.68 (246)	6.31 (160)	22.19 (564)	9.5 (241)	26.44 (672)	17.57 (446)	38.0 (965)	20.5 (521)				
	215T																23.2 (589)				
	254T																48.0 (1219)				
	256T																27.8 (706)				
	284T																30.3 (770)				
	286T																30.3 (770)				
324T	23.2 (589)																				
1230 6 x 5 (152 x 127)	254T	0.94 (24)	1.38 (35)	1.00 (25)	1.44 (37)	21.17 (538)	19.92 (506)	11.44 (291)	13.19 (335)	10.94 (278)	6.88 (175)	24.63 (626)	9.5 (241)	27.19 (691)	17.57 (446)	48.0 (1219)	23.2 (589)				
	256T																27.8 (706)				
	284T																30.3 (770)				
	286T																30.3 (770)				
	324T																50.0 (1270)				
	326T					33.4 (848)															
	364T					23.17 (589)	21.92 (557)														
1238 6 x 5 (152 x 127)	254T	0.94 (24)	1.38 (35)	1.00 (25)	1.44 (37)	21.17 (538)	19.92 (506)	13.75 (349)	15.75 (400)	11.81 (300)	8.25 (210)	27.75 (705)	9.5 (241)	31.81 (808)	19.57 (497)	50.0 (1270)	23.2 (589)				
	256T																27.8 (706)				
	284T																30.3 (770)				
	286T																33.4 (848)				
	324T																64.0 (1626)				
	326T					27.17 (690)	25.92 (658)														
	364T					27.17 (690)	25.92 (658)														
	365T					27.17 (690)	25.92 (658)														
	404T					27.17 (690)	25.92 (658)														
405T	27.17 (690)	25.92 (658)																			
1524 8 x 6 (203 x 152)	254T	1.00 (25)	1.44 (37)	1.13 (29)	1.62 (41)	21.17 (538)	19.92 (506)	12.19 (310)	14.38 (365)	10.94 (278)	7.50 (191)	24.63 (626)	9.5 (241)	28.81 (732)	19.57 (497)	48.0 (1219)	23.2 (589)				
	256T																27.8 (706)				
	284T																30.3 (770)				
	324T																30.3 (770)				

TA Series Dimensions, continued

DIMENSIONS

Motor dimensions are approximate and vary by manufacturer and motor type.

Model No. Flange Size	Motor Frame	A DISCHARGE		B SUCTION		C	D	E	F	G	H	J	K	L	M	N	P	
		ANSI Class 125	ANSI Class 250	ANSI Class 125	ANSI Class 250													
1530 8 x 6 (203 x 152)	254T	1.00 (25)	1.44 (37)	1.13 (29)	1.62 (41)	23.17 (589)	21.92 (557)	12.38 (314)	14.38 (365)	11.81 (300)	9.25 (235)	27.75 (705)	12.0 (305)	32.94 (837)	21.50 (546)	54.0 (1372)	23.2 (589)	
	256T															57.0 (1448)	30.3 (770)	
	284T																	33.4 (848)
	286T																	
	324T																	
	326T																	
	364T															68.0 (1727)	38.3 (973)	
365T																		
1538 8 x 6 (203 x 152)	284T	1.00 (25)	1.44 (37)	1.13 (29)	1.62 (41)	23.17 (589)	21.92 (557)	13.75 (349)	16.12 (409)	11.81 (300)	8.25 (210)	27.75 (705)	11.85 (301)	33.62 (854)	21.50 (546)	57.0 (1448)	27.8 (706)	
	286T																30.3 (770)	
	324T																	33.4 (848)
	326T																	
	364T					68.0 (1727)	38.3 (973)											
	365T																	
	404T																	
	405T																	
444T	80.0 (2032)	44.6 (1133)																
445T																		
1548 8 x 6 (203 x 152)	324T	1.00 (25)	1.44 (37)	1.13 (29)	1.62 (41)	27.17 (690)	25.92 (658)	17.69 (449)	20.06 (510)	14.50 (368)	10.62 (270)	34.13 (867)	13.52 (343)	43.25 (1099)	25.44 (646)	64.0 (1626)	30.3 (770)	
	326T																33.4 (848)	
	364T																	38.3 (973)
	365T																	
	404T																80.0 (2032)	
	405T																	
	444T																	
	445T																	
	447T																	
449T	53.4 (1356)																	
2030 10 x 8 (254 x 203)		256T	1.13 (29)	1.62 (41)	1.19 (30)	1.88 (48)	23.17 (589)	21.92 (557)	15.19 (386)	17.06 (433)	13.63 (346)	11.25 (286)	31.32 (796)	12.0 (305)	37.75 (959)	25.44 (646)	57.0 (1448)	23.2 (589)
	284T	30.3 (770)																
	286T																	33.4 (848)
	324T																	
	326T	60.0 (1524)					38.3 (973)											
	364T																	
	365T																	
	404T																	
	405T																	
444T	68.0 (1727)	44.6 (1133)																
2038 10 x 8 (254 x 203)			324T	1.13 (29)	1.62 (41)	1.19 (30)	1.88 (48)	27.17 (690)	25.92 (658)	17.69 (449)	18.88 (480)	14.50 (368)	8.88 (226)	34.13 (867)	13.52 (343)	35.69 (907)	22.31 (567)	64.0 (1626)
	326T	33.4 (848)																
	364T		38.3 (973)															
	365T																	
	404T	80.0 (2032)																
	405T																	
	444T																	
	445T																	
447T																		
449T	48.4 (1229)																	
2048 10 x 8 (254 x 203)		365T	1.13 (29)	1.62 (41)	1.19 (30)	1.88 (48)	27.17 (690)	25.92 (658)	17.69 (449)	21.65 (550)	14.50 (368)	10.62 (270)	34.13 (867)	13.52 (343)	42.94 (1091)	25.44 (646)	64.0 (1626)	33.4 (848)
	404T	38.3 (973)																
	405T																	44.6 (1133)
	444T																	
	445T	80.0 (2032)					48.4 (1229)											
	447T																	
	449T																	
	G5010							92.0 (2337)	67.2 (1707)									
2524 10 x 10 (254 x 254)	256T	1.19 (30)	1.88 (48)	1.19 (30)	1.88 (48)	23.17 (589)	21.92 (557)	13.38 (340)	19.31 (490)	13.63 (346)	8.25 (210)	31.44 (799)	12.0 (305)	33.56 (852)	21.50 (546)	57.0 (1448)	23.2 (589)	
	284T																27.8 (706)	
	286T																	30.3 (770)
	324T																	
	326T																33.4 (848)	
	364T																	
	365T																	

TA Series Dimensions, continued

DIMENSIONS

Motor dimensions are approximate and vary by manufacturer and motor type.

Model No. Flange Size	Motor Frame	A DISCHARGE		B SUCTION		C	D	E	F	G	H	J	K	L	M	N	P
		ANSI Class 125	ANSI Class 250	ANSI Class 125	ANSI Class 250												
2530 10 x 10 (254 x 254)	284T	1.19 (30)	1.88 (48)	1.19 (30)	1.88 (48)	23.17 (589)	21.92 (557)	15.75 (400)	16.94 (430)	13.63 (346)	9.81 (249)	31.32 (796)	12.00 (305)	38.06 (967)	25.44 (646)	57.0 (1448)	27.8 (706)
	286T																30.3 (770)
	324T																33.4 (848)
	326T																38.3 (973)
	364T					60.0 (1524)	68.0 (1727)						44.6 (1133)				
	365T															44.6 (1133)	
	404T															44.6 (1133)	
	405T															44.6 (1133)	
444T	80.0 (2032)	48.4 (1229)	53.4 (1356)														
445T				53.4 (1356)													
2538 12 x 10 (305 x 254)	364T	1.19 (30)	1.88 (48)	1.25 (32)	2.00 (51)	27.17 (690)	25.92 (658)	17.69 (449)	23.23 (590)	14.50 (368)	10.40 (264)	34.13 (867)	13.52 (343)	44.00 (1118)	25.44 (646)	80.0 (2032)	33.4 (848)
	365T																38.3 (973)
	404T																44.6 (1133)
	405T																44.6 (1133)
	444T																44.6 (1133)
	445T																44.6 (1133)
	447T																44.6 (1133)
449T	44.6 (1133)																

