



BAY-LYNX ULTRALITE⁺

VOLUMETRIC MIXER

V 1.0



PARTS MANUAL

BAY  LYNX

www.bay-lynx.com
parts@bay-lynx.com
905-304-3900



TABLE OF CONTENTS

MIX AUGER ASSEMBLY

EXPLODED VIEWS _____ 3

BILL OF MATERIALS _____ 6

MIXER DISCHARGE BOWL ASSEMBLY

EXPLODED VIEWS _____ 7

BILL OF MATERIALS _____ 8

OPERATOR PANEL ASSEMBLY

EXPLODED VIEWS _____ 9

BILL OF MATERIALS _____ 10

AGGREGATE HOPPER ASSEMBLY

EXPLODED VIEWS _____ 11

BILLS OF MATERIALS _____ 16

CONVEYOR FRAME

EXPLODED VIEWS _____ 17

BILLS OF MATERIALS _____ 19

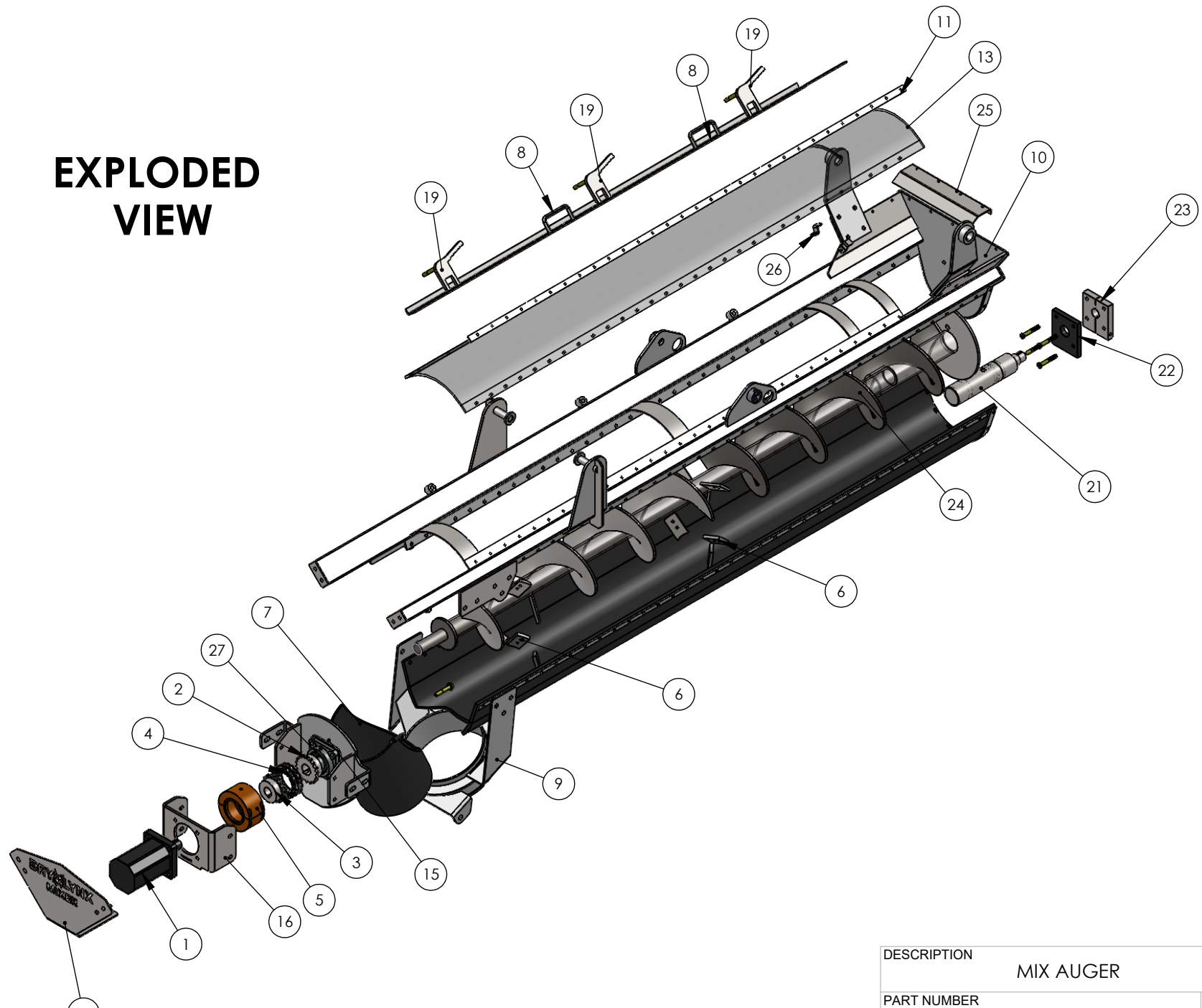
CEMENT HOPPER ASSEMBLY

EXPLODED VIEWS _____ 20

BILL OF MATERIALS _____ 23

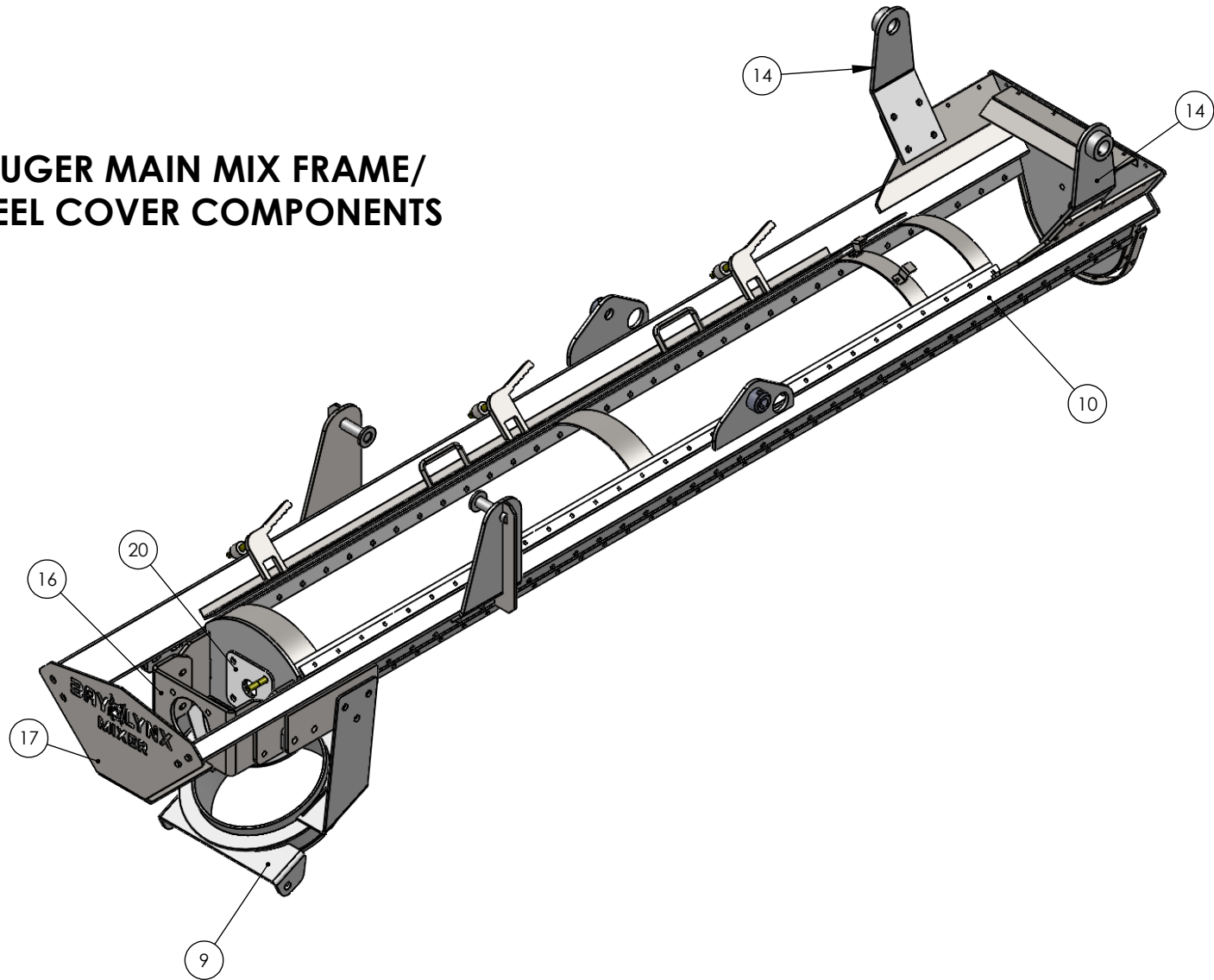


EXPLODED VIEW



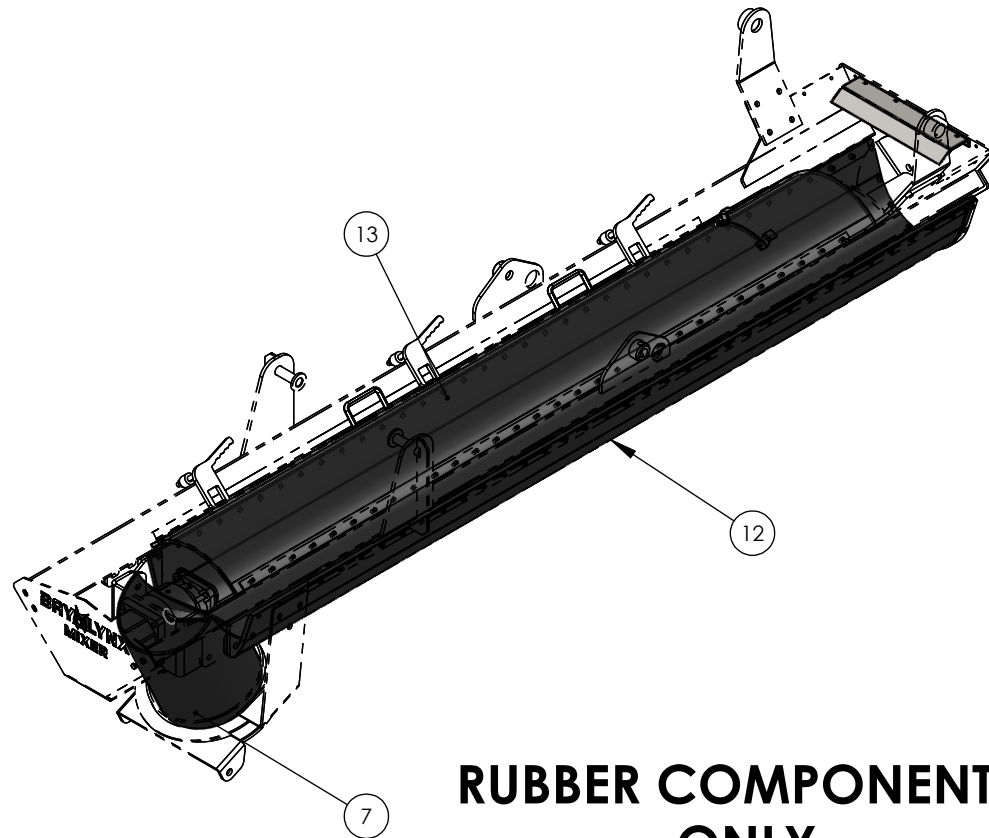
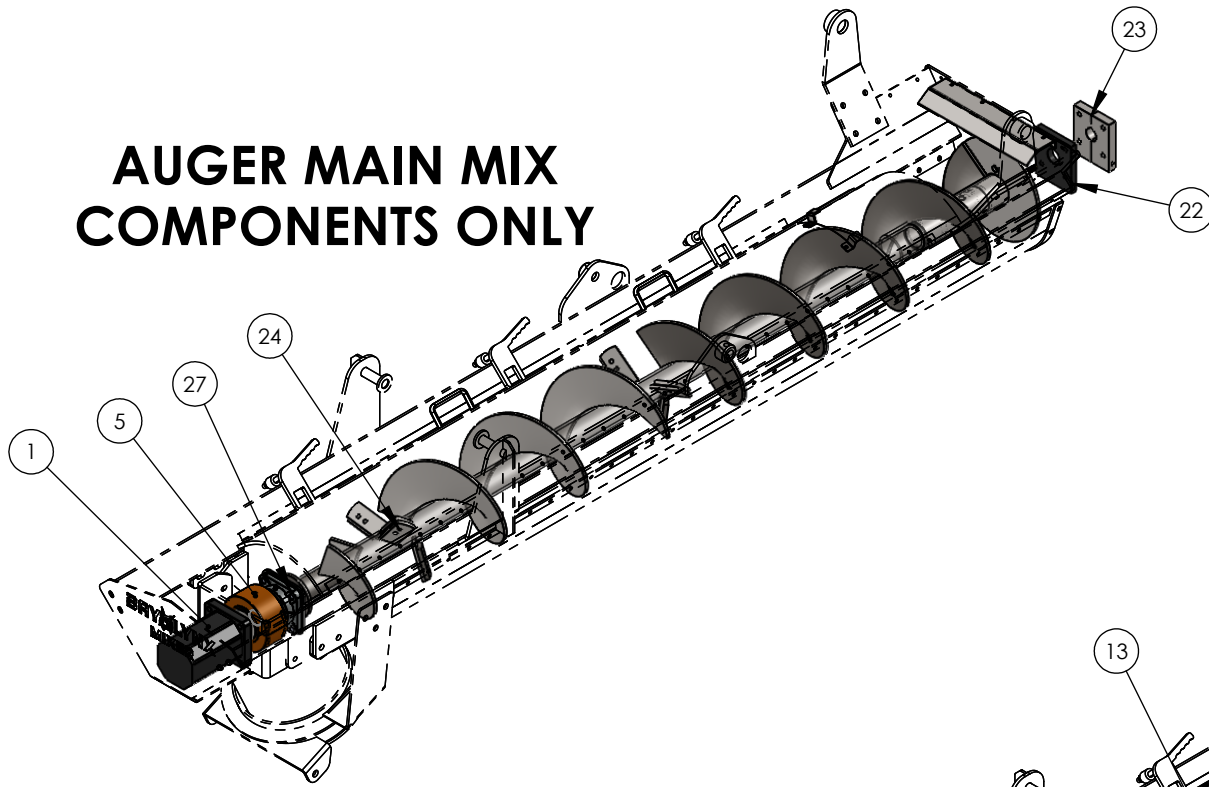
DESCRIPTION	MIX AUGER	
PART NUMBER	AF425-ASM-1	
REV.	SHEET 1 OF 4	

AUGER MAIN MIX FRAME/ STEEL COVER COMPONENTS



DESCRIPTION	MIX AUGER	
PART NUMBER	AF425-ASM-1	REV.
		SHEET
		2 OF 4

AUGER MAIN MIX COMPONENTS ONLY

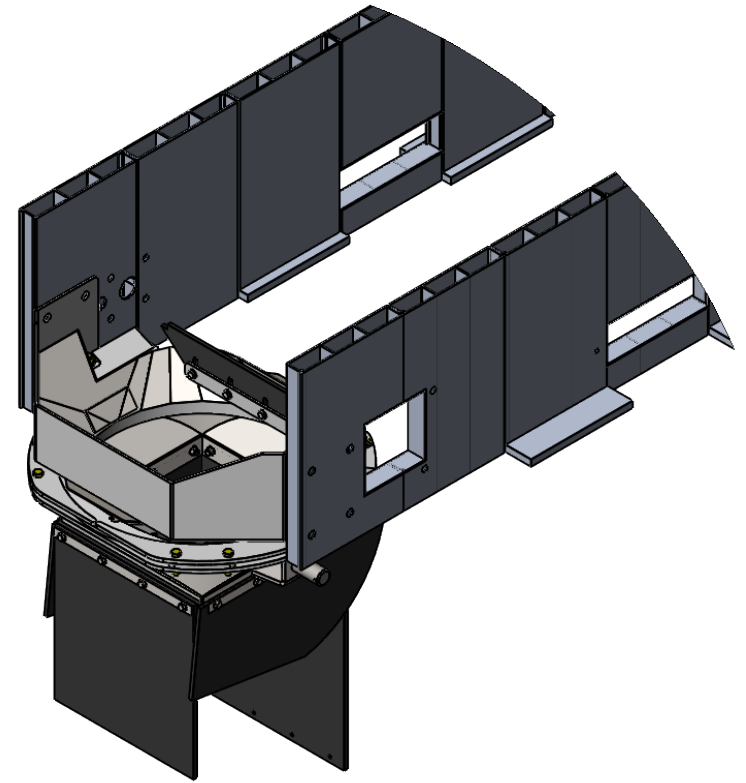
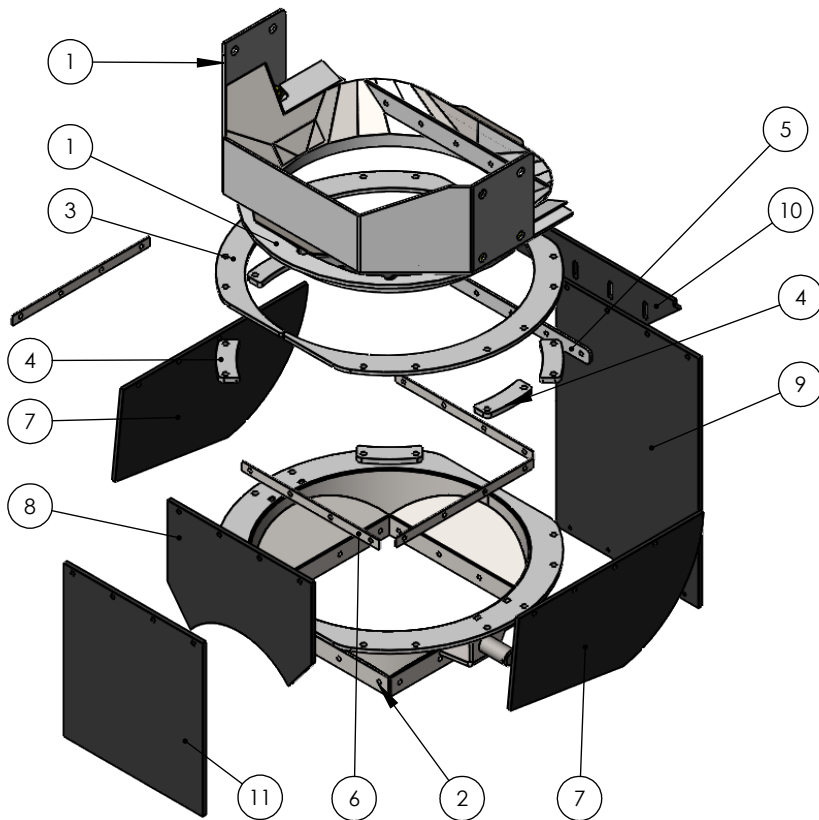


RUBBER COMPONENTS ONLY

DESCRIPTION	MIX AUGER	
PART NUMBER	AF425-ASM-1	
REV.	SHEET 3 OF 4	

**MIX AUGER
AF425-ASM-1**

ITEM NO.	PART NUMBER	DESCRIPTION	QTY.
1	1100390	AUGER MOTOR (112-1067)	1
2	2090305	SPROCKET - 6018 1-3/4	1
3	2090306	SPROCKET - 6018 1-1/2	1
4	2090310	DOUBLE SPROCKET CHAIN - 6018	1
5	2090315	6018 COUPLING COVER	1
6	2120600	WEAR BLADE - 2 HOLE "PADDLE"	6
7	2550310 / AF202-R	RUBBER, SWIVEL	1
8	AF147-S-ASM	AUGER LID (STRIP)	1
9	AF200-ASM	CHUTE WELDMENT (360 Deg)	1
10	AF425-ASM	AUGER FRAME (2018 DESIGN)	1
11	AF431-1	PL, 3/16"	1
12	AF432-R	RUBBER, 3 PLY 330, 1/4 x 1/16 BELTING	1
13	AF434-R	AUGER TOP COVER	1
14	AF443-ASM	DISCHARGE RING BRACKETS	2
15	AF445-ASM	AUGER BEARING MOUNT	1
16	AF447	MOTOR SLIDE PLATE	1
17	AF450	MOTOR GUARD END PLATE	1
18	AF452	SIDE PLATE STRAP (AUGER BOOT)	2
19	AF453-ASM	AUGER LID LOCK	3
20	AF562	UHMW PLATE (BEARING MOTOR MOUNT)	1
21	IBS001-ASM-BL	INTERNAL BEARING SYSTEM	1
22	IBS008	RUBBER SEAL	1
23	IBS009	RETAINING PLATE	1
24	IBS100-ASM	AUGER - IBS BEARING	1
25	MD432	PL, 5 1/2" x 1/8"	1
26	MD435	FB, 3/4" X 1/8"	2
27	UC209-28	Flange-Bearing, UC 209-28	1

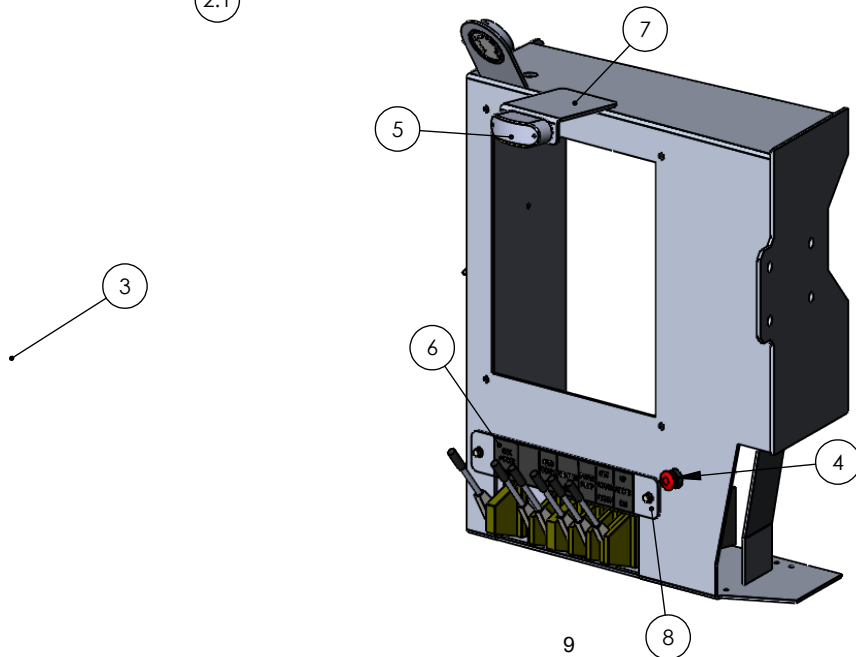
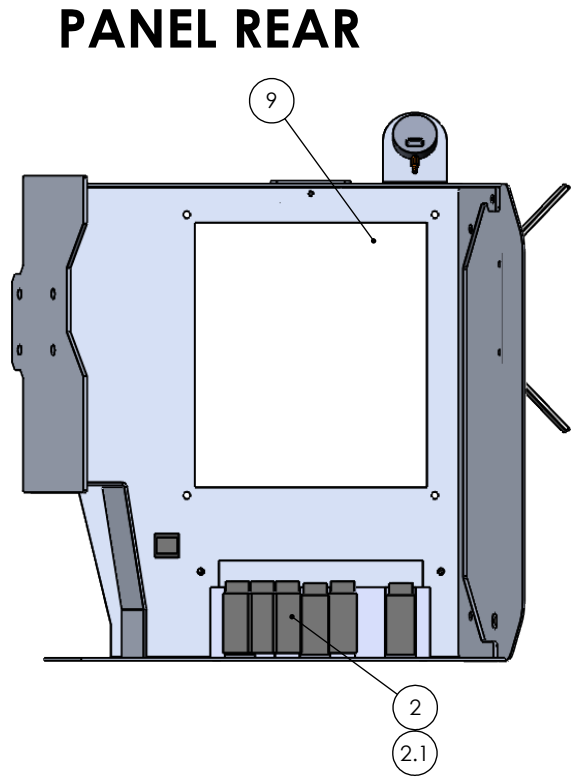
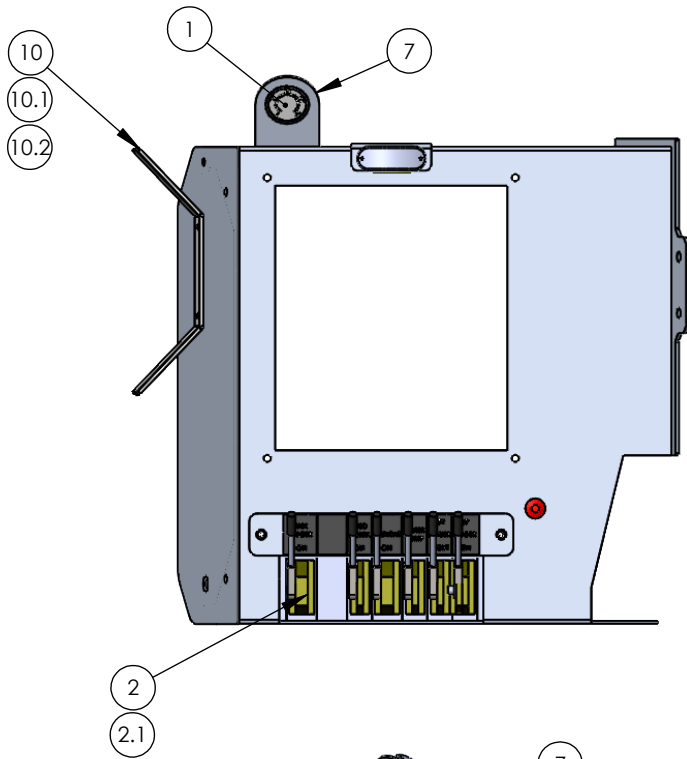


MIXER DISCHARGE
COMPLETE ASSEMBLY
PART# MD425-ASM-1

DESCRIPTION		ULTRALITE+ MIX BOWL
PART NUMBER		MD425-ASM-1
REV. 0	SHEET	1 OF 2

**MIXER DISCHARGE
ASSMEBLY
MD425-ASM-1**

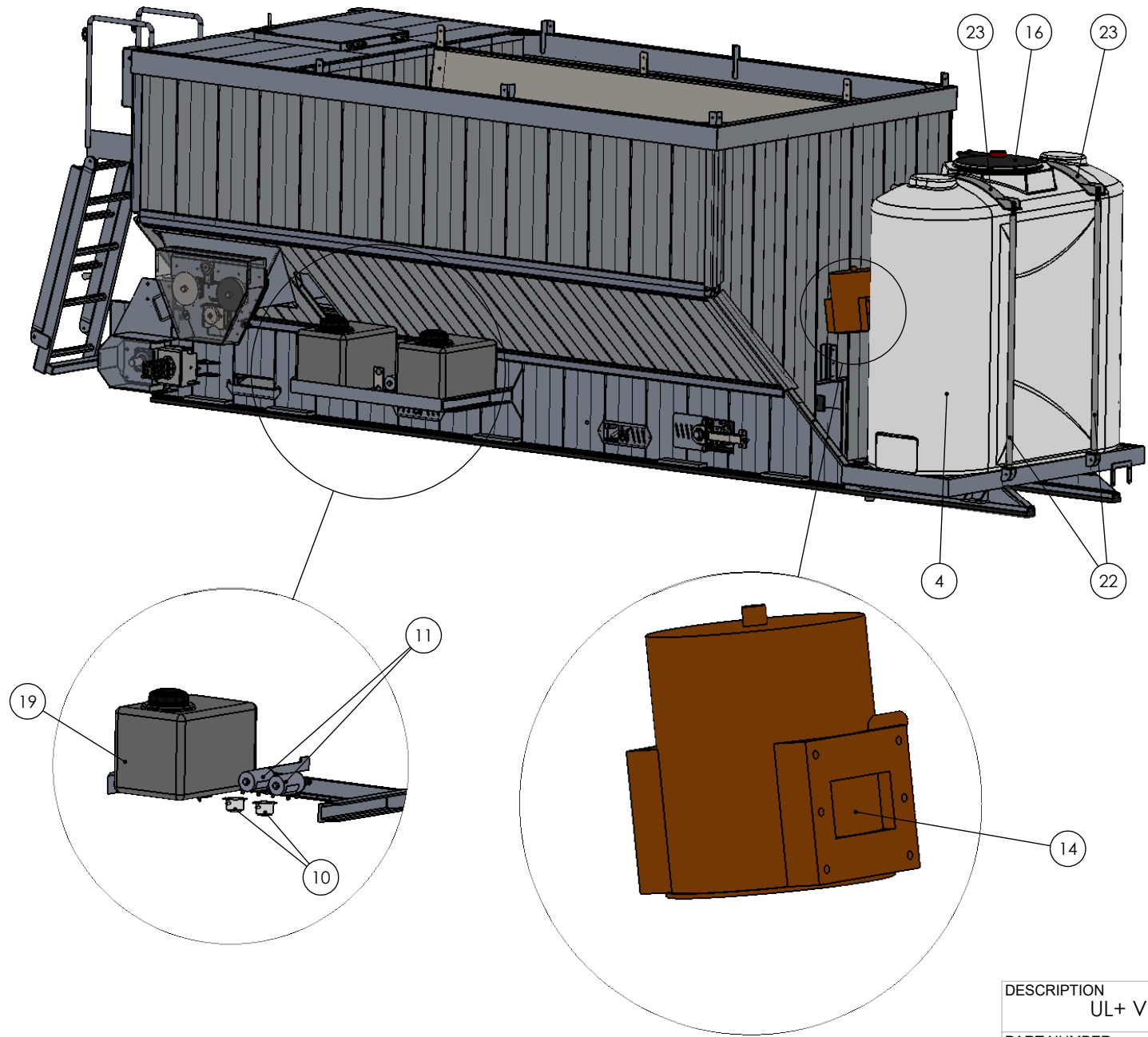
ITEM NO.	PART NUMBER	DESCRIPTION	QTY
1	MD425-ASM	MIXER DISCHARGE BOWL "UPPER" WELDMENT	1
2	MD400-ASM	LOWER BOWL	1
3	MD407	PL, 14 7/16" x 3/8"	2
4	MD413	PL, 1 31/32" x 1/2"	6
5	MD163	BACKING PLATE FOR SCRAPER RUBBER	1
6	MD418	PL, 1" x 11ga x 16 1/4"	4
7	MD414-RUB	RUBBER, 11" x 3/8"	2
8	MD416-RUB	MISC 3" x 3" x 1/4"	1
9	MD415-RUB	MISC 3" x 3" x 1/4"	1
10	2550301	CONVEYOR SCRAPPER RUBBER (MD158-R)	1
11	MD436-RUB	MISC 3" x 3" x 1/4"	1



DESCRIPTION		REV.
UL PLUS ELECTRICAL PANEL		SHEET
PART NUMBER	ELECTRICAL PARTS	1 OF 2

**OPERATOR PANEL
AC560-ASM-1**

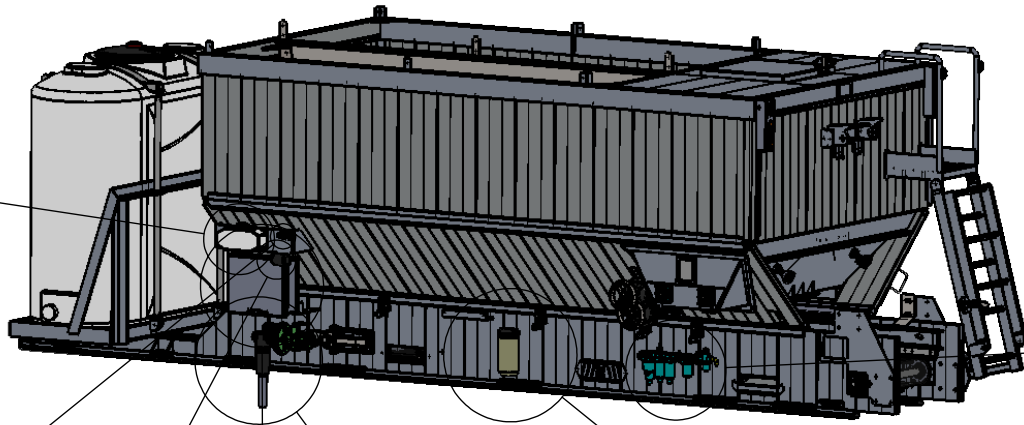
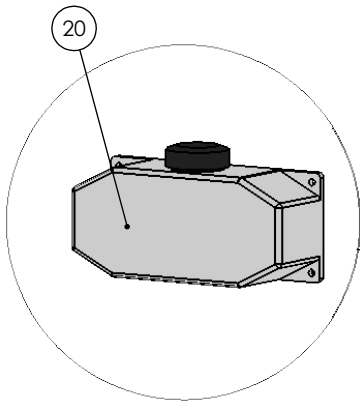
ITEM NO.	PART NUMBER	DESCRIPTION	QTY.
1	1010380	OIL PRESSURE GAUGE	1
2	1010565	MAIN HYDRAULIC VALVE BANK	1
2.1	1120440	HIGH PROPORTIONAL COIL	1
3	1200605	BATCH PRO3 PANEL	1
4	1205005	AIR SWITCH - SECURE HOOK	1
5	1750351	PANEL LIGHT - LED	1
6	4661009	LABEL "HYDRAULIC VALVE"	1
7	AC560-ASM	CONTROL PANEL	1
8	AC565	CONTROL PANEL SIDE MOUNT PLATE	1
9	MISC	BULK HEAD FOR MIXERS PLATE	1
10	EL123	WATER HOSE HOLDER BRACKET	2
10.1	13300005	WATER WASH DOWN HOSE 25'	1
10.2	13300010	SPRAY NOZZLE	1



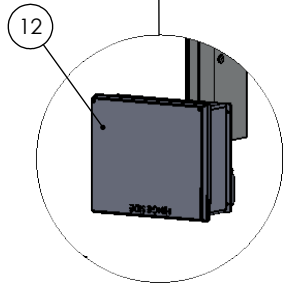
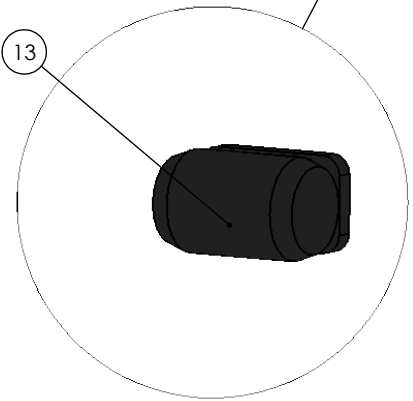
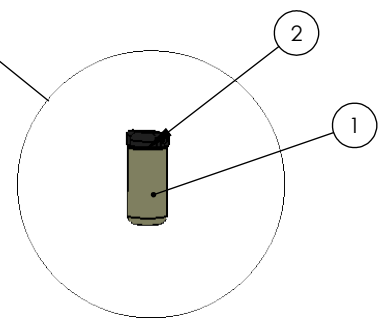
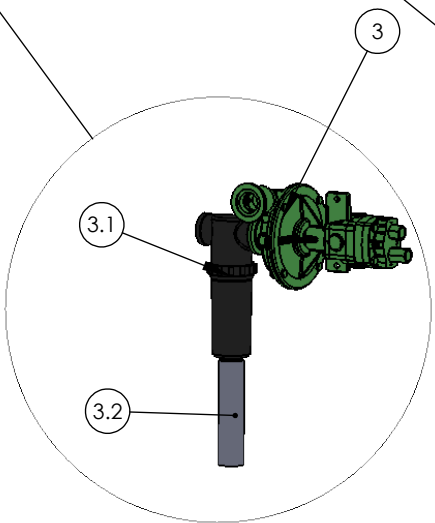
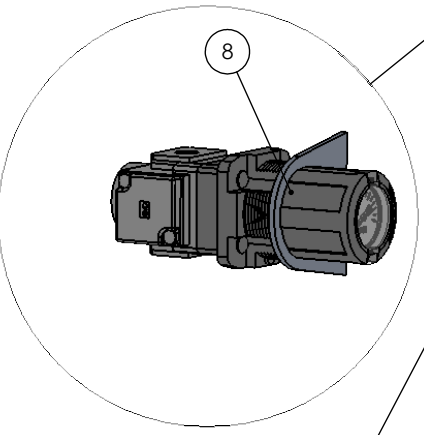
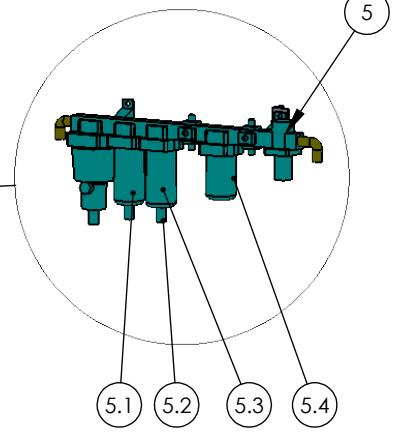
DESCRIPTION
UL+ VOLUMETRIC MIXER

PART NUMBER
AGGREGATE BIN & COMPONENTS

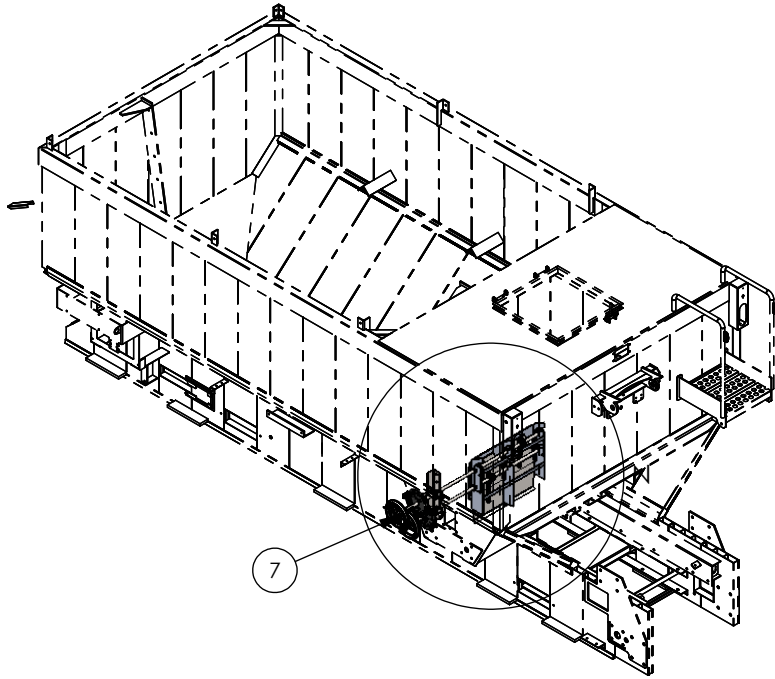
REV.
SHEET
1 OF 6



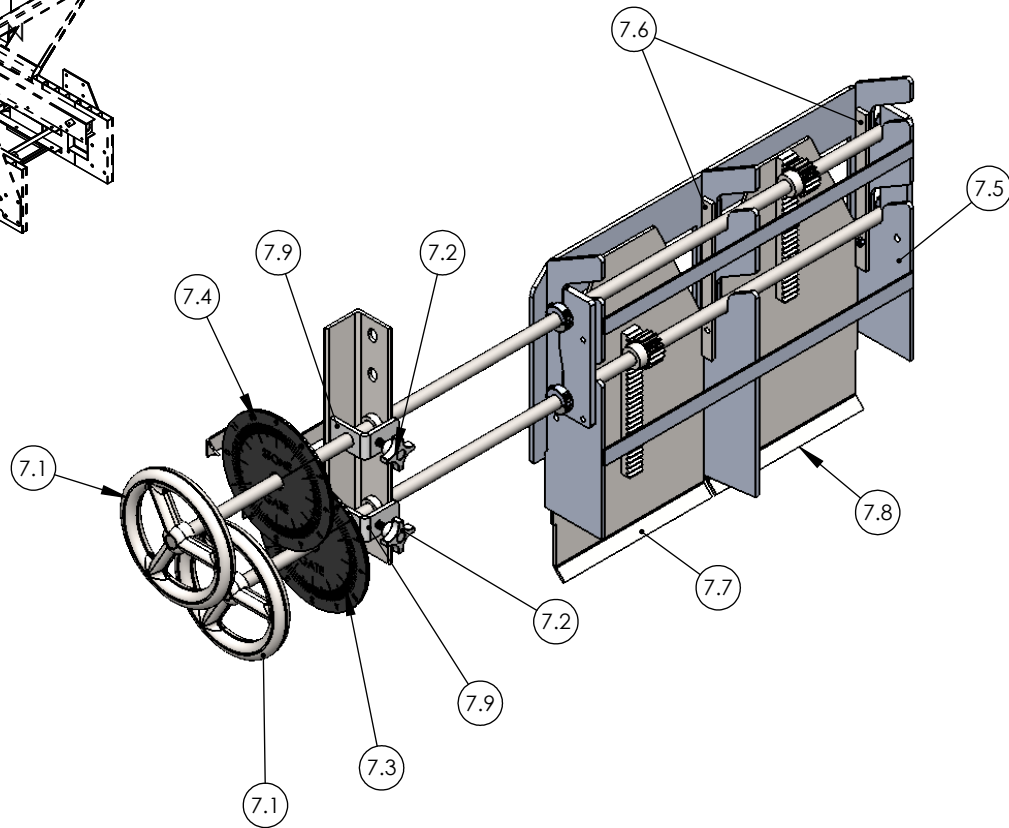
AIR MANIFOLD
(COMPLETE ASSEMBLY)
#1540125



DETAIL R	
DESCRIPTION SCALE 1 : 25 UL+ VOLUMETRIC MIXER	
PART NUMBER	REV.
AGGREGATE BIN & COMPONENTS	SHEET 2 OF 6



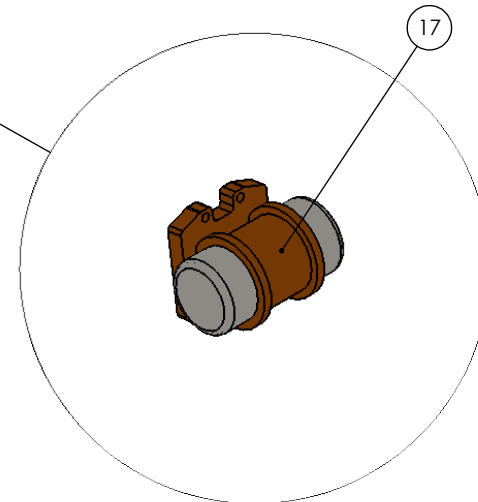
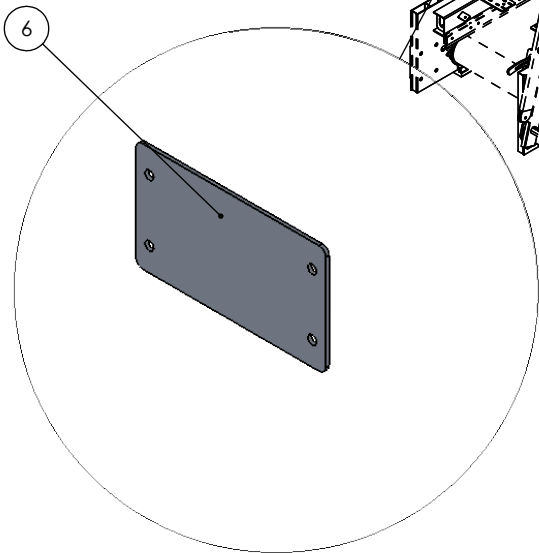
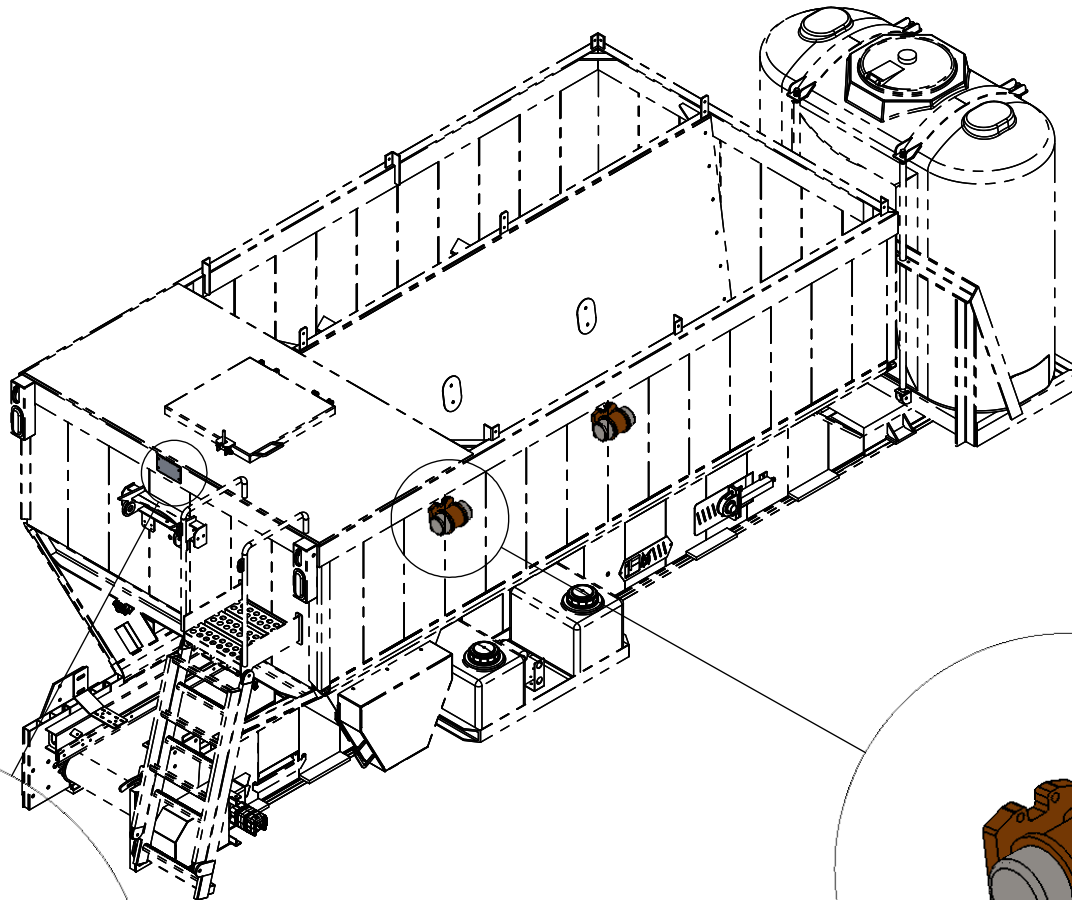
**METERING GATE
COMPLETE ASSEMBLY**
BAY-LYNX PART#
AC674-ASM



DESCRIPTION
ALUM AGG BIN + CONVEYOR

PART NUMBER
AGGREGATE BIN & COMPONENTS

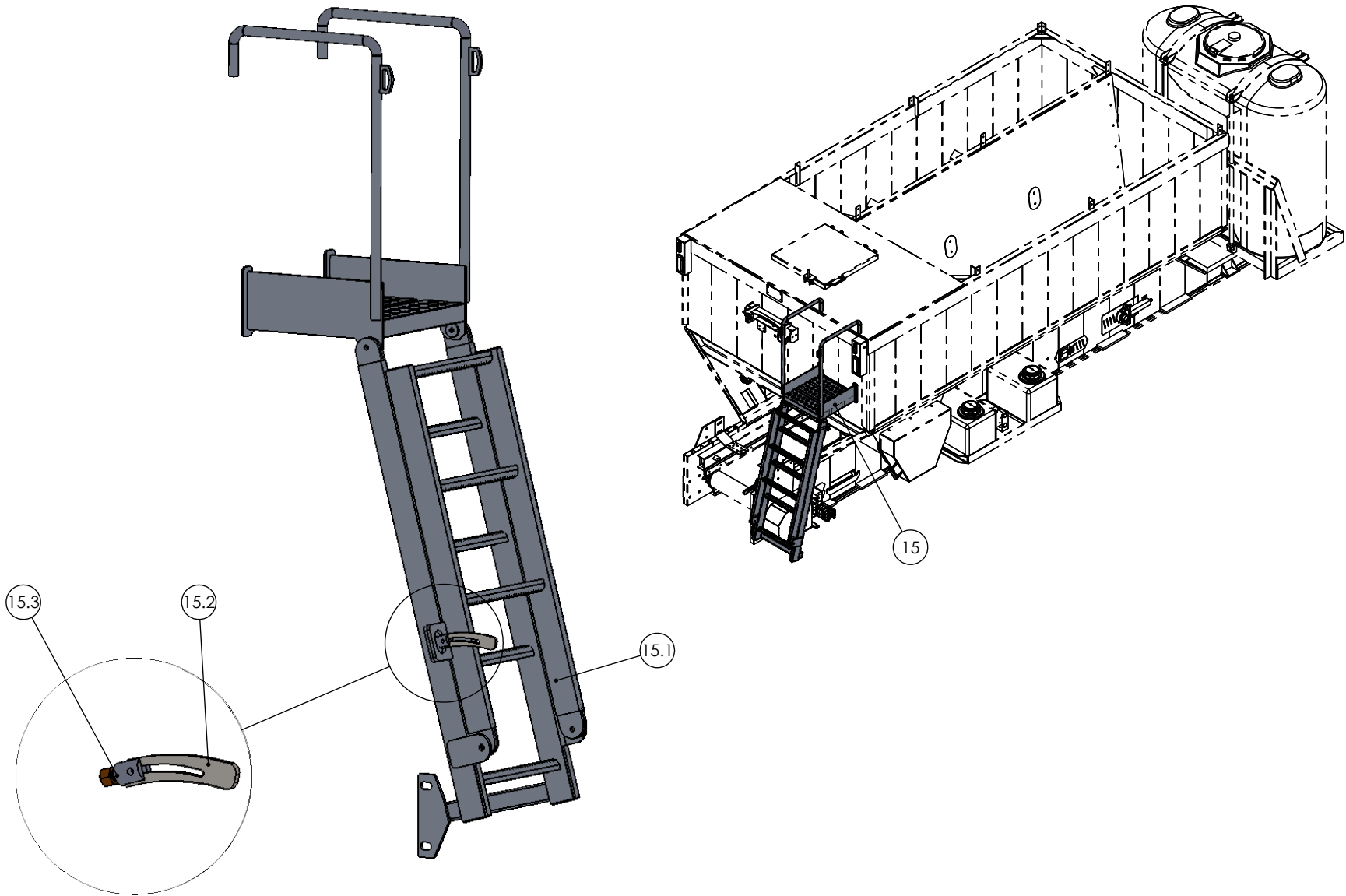
REV. 3
SHEET
3 OF 6



DESCRIPTION
UL+ VOLUMETRIC MIXER

PART NUMBER
AGGREGATE BIN & COMPONENTS

REV.
SHEET
4 OF 6



DESCRIPTION
UL+ VOLUMETRIC MIXER

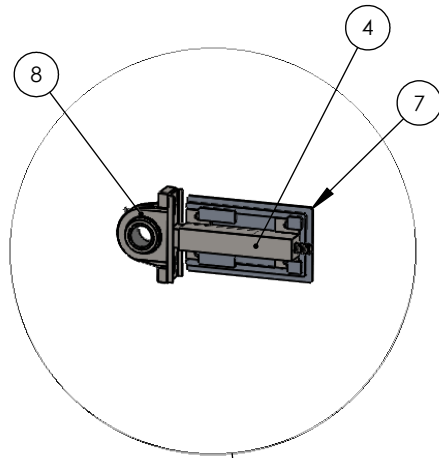
PART NUMBER
AGGREGATE BIN & COMPONENTS

REV.
SHEET
5 OF 6

**AGG BIN &
COMPONENTS
AC600-ASM-1**

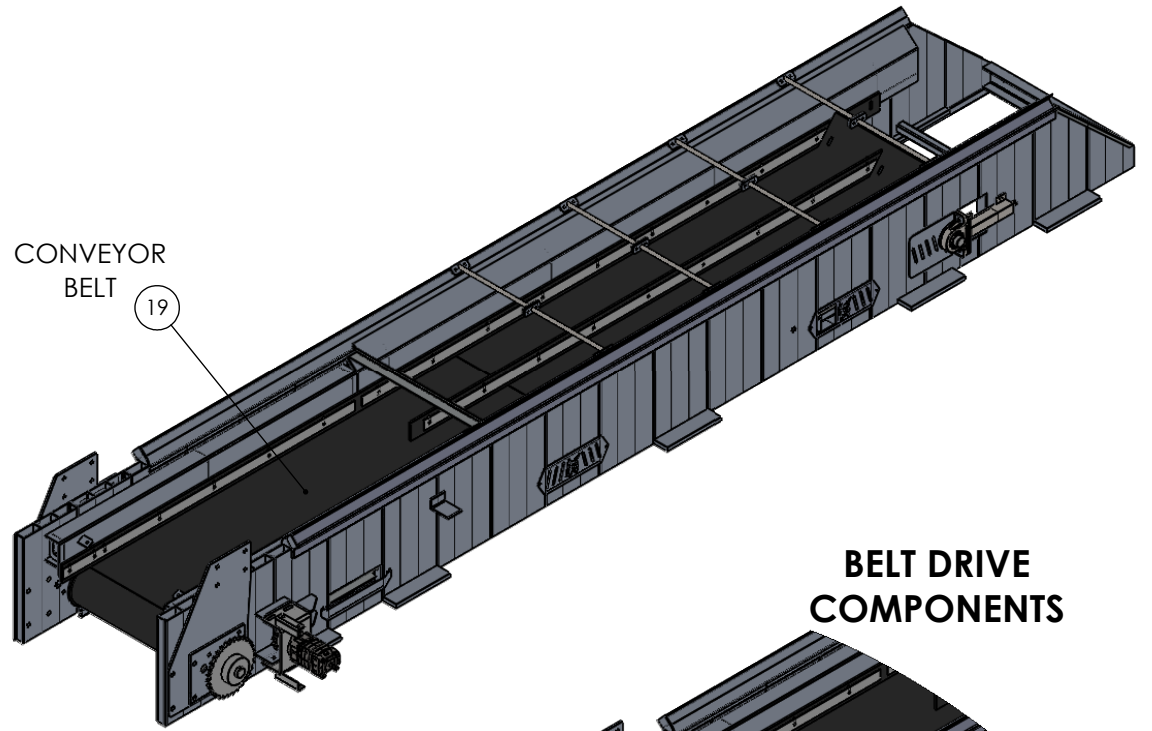
ITEM NO.	PART NUMBER	DESCRIPTION	QTY.
1	1090110	HYDRAULIC FILTER ELEMENT - LARGE (BL6721-04)	1
2	1090175	HYDRAULIC FILTER HEAD (SSF 120-25)	1
3	1110180	WATER PUMP - HYDRAULIC	1
3.1	1310000	WATER STRAINER - 1.5 NPT	1
3.2	131001	WATER STRAINER FILTER SCREEN	1
4	1310100	500G WATER TANK	1
5	1540125	AIR MANIFOLD (COMPLETE ASSEMBLY)	1
5.1	1570020	WATER SEPERATOR ELEMENT	1
5.2	1570022	MIST REMOVER ELEMENT	1
5.3	1570023	MIST REMOVER BOWL	1
5.4	1570024	LUBRICATOR BOWL ASSEMBLY	1
6	AC665	ACCESS PANEL COVER	1
7	AC674-ASM	METERING GATE ASS'Y.	1
7.1	1540190	HAND WHEEL CAST (6025K13)	2
7.2	3090230	PLASTIC KNOB (5993K420)	2
7.3	4661005	DECAL - "SAND" METERING	1
7.4	4661006	DECAL - "STONE" METERING	1
7.5	AC674	METERING GATE FRAME	2
7.6	MG123	DOOR GUIDES	4
7.7	MG603-1-ASM	METERING GATE DOOR - SAND	1
7.8	MG603-ASM	METERING GATE DOOR - STONE	1
7.9	MG124	BRACKY (FOR LOCKING KNOB)	
8	1560300	AIR REGULATOR W/PRESSURE GAUGE	1
10	1310202	IN LINE STRAINER	2
11	1320000	ADMIX PUMP - 24V	2
12	HJ1614HWLG	HOFFMAN ELEC PANEL - HJ1614HWLG	1
13	HUSKEY PUMP	PUMP	1
14	HYD TANK	HYD. TANK - CYCLONE 40GPM	1
15	LD730-ASM	Upper Ladder Platform	1
15.1	LD740-ASM	LOWER FLIP DOWN LADDER	1
15.2	LD633	LATCH / LOCK LEVER	
15.3	LD318	LATCH / LOCK LEVER BOSS	
16	1310101	FLIPLID TOP - 500G WATERTANK	1
17	1140108	ELECTRIC VIBRATOR - MVE 202 DC 24	2
19	1310216	ADD MIX TANK	2
20	4880109	OIL CONTAINER	1
22	WT107-ASM	WATER TANK HOLD-DOWN RODS	4
23	WT111-ASM	WATER TANK TOP CLAMP	2

BELT TENSIONER COMPONENTS

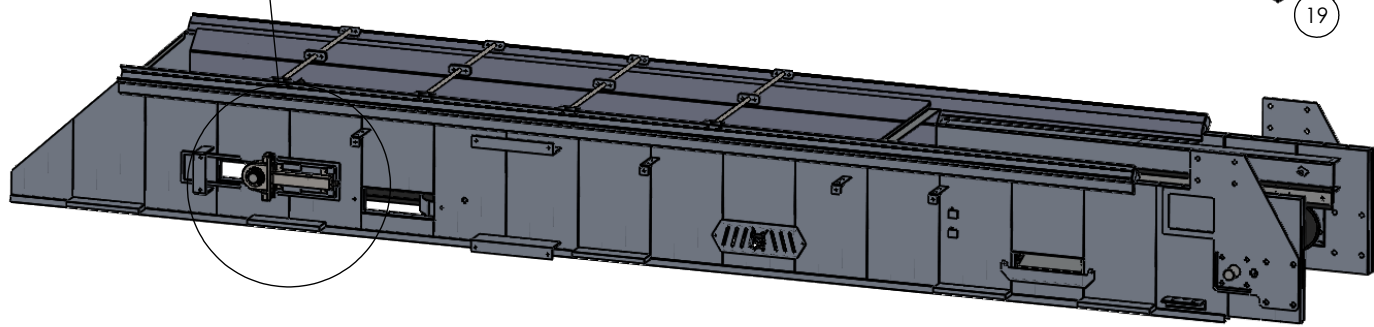
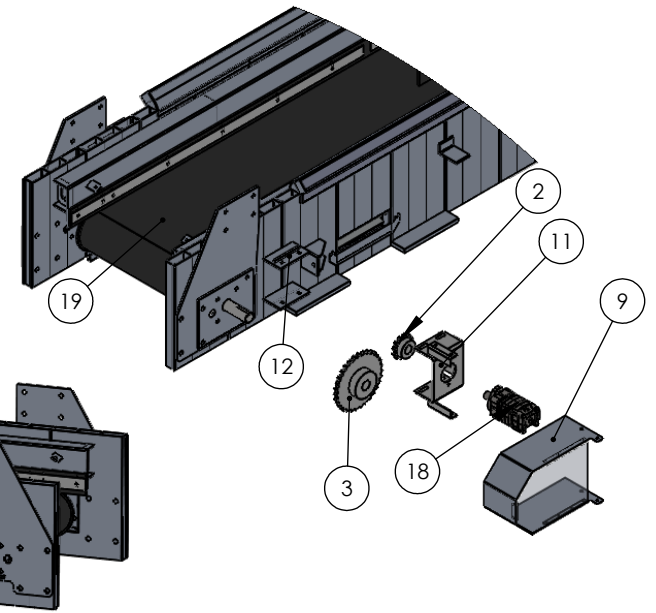


CONVEYOR BELT

19

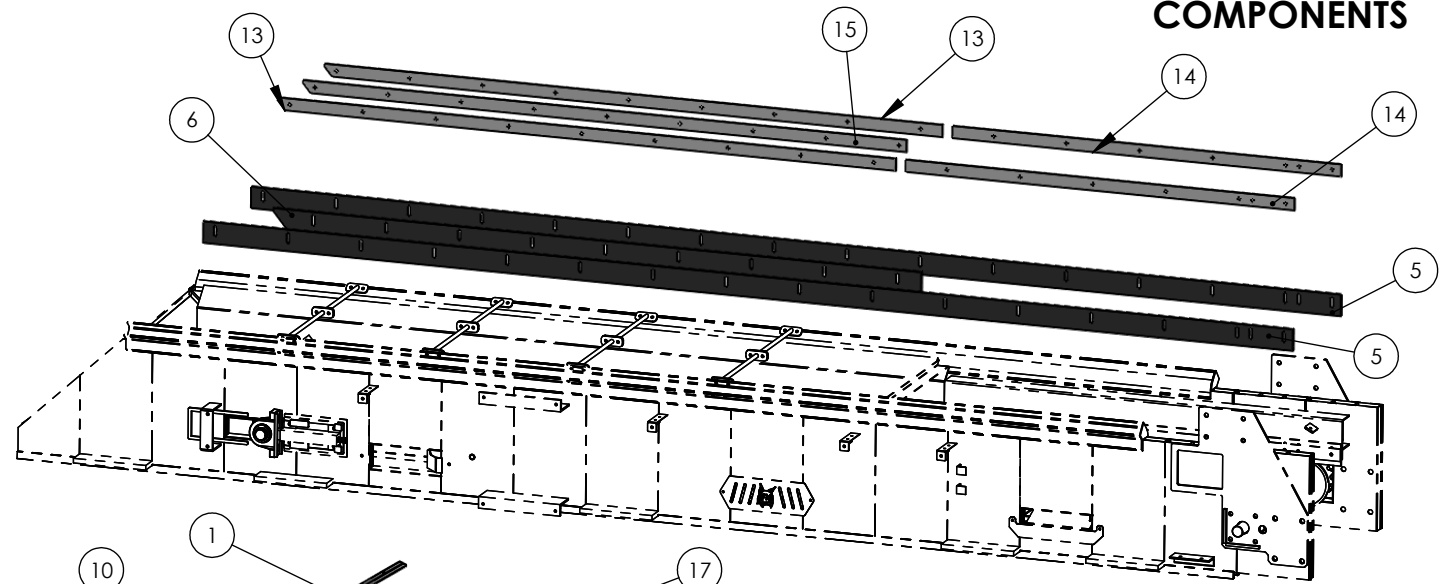


BELT DRIVE COMPONENTS

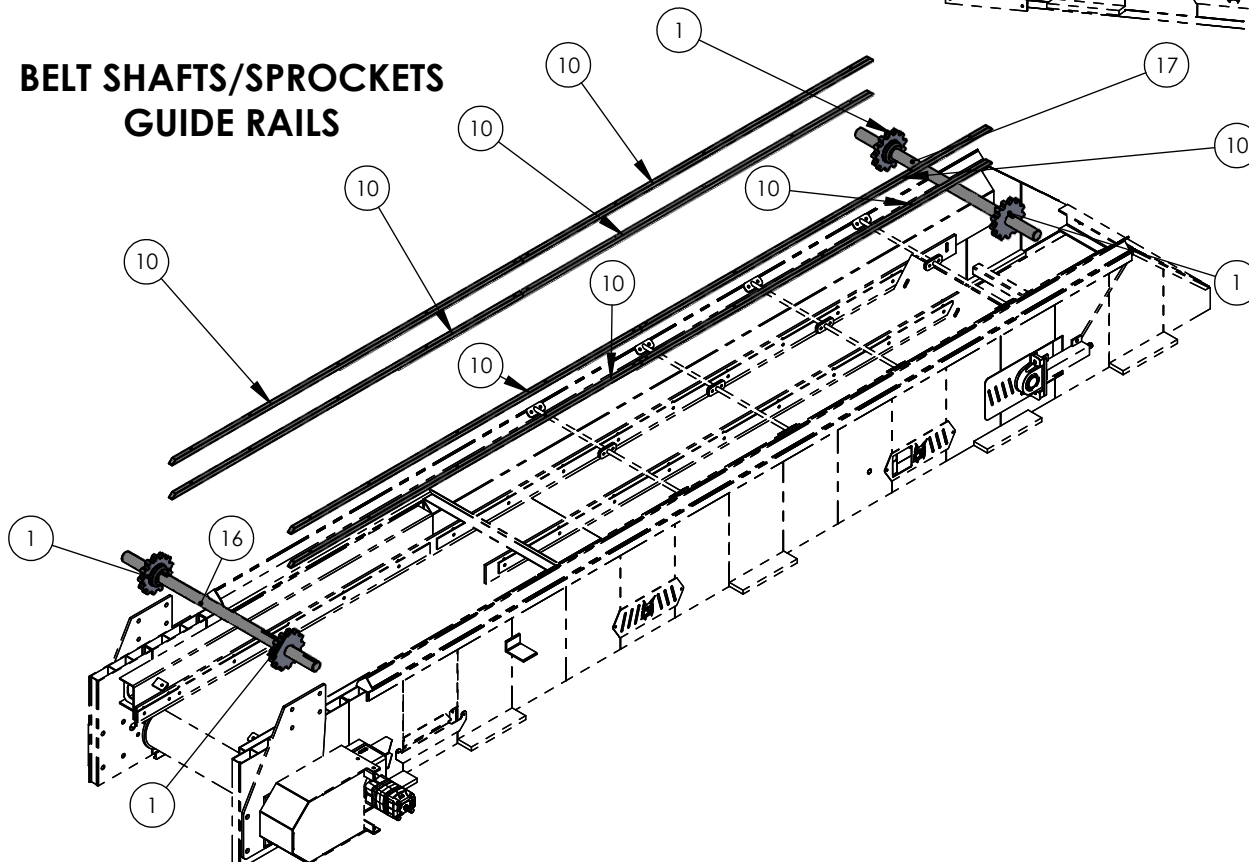


DESCRIPTION		UL+ VOLUMETRIC MIXER
PART NUMBER		CONVEYOR FRAME
REV.	SHEET 1 OF 3	

SKIRTING COMPONENTS



BELT SHAFTS/SPROCKETS GUIDE RAILS



DESCRIPTION
UL+ VOLUMETRIC MIXER

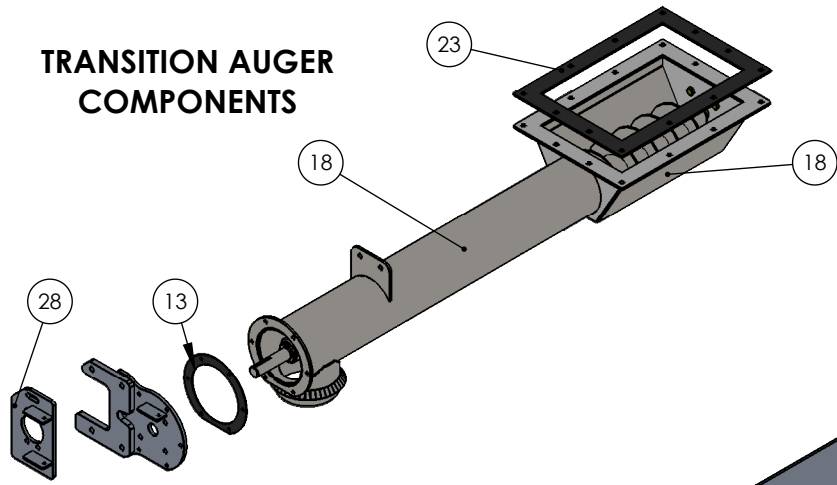
PART NUMBER
CONVEYOR FRAME

REV.
SHEET
2 OF 3

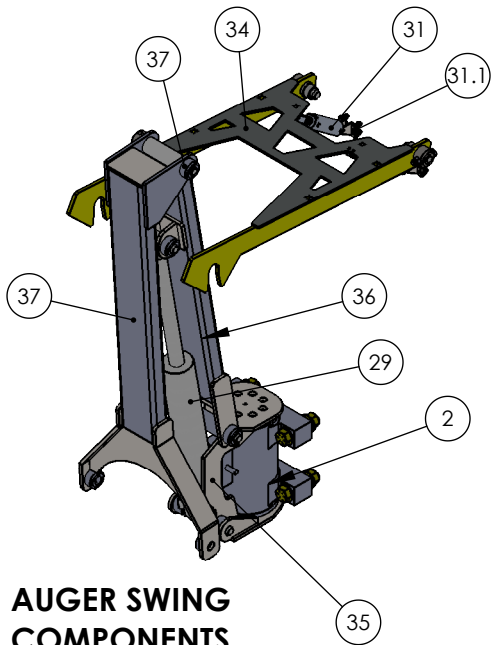
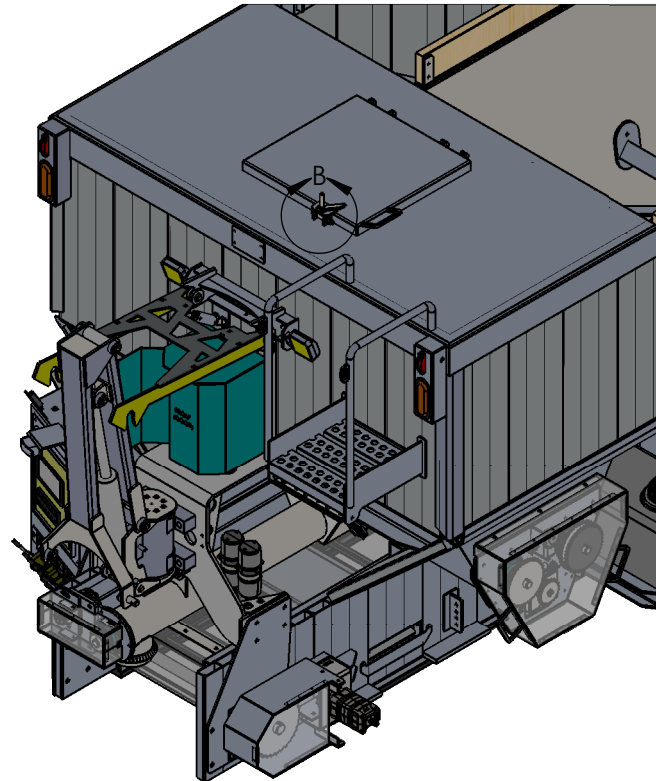
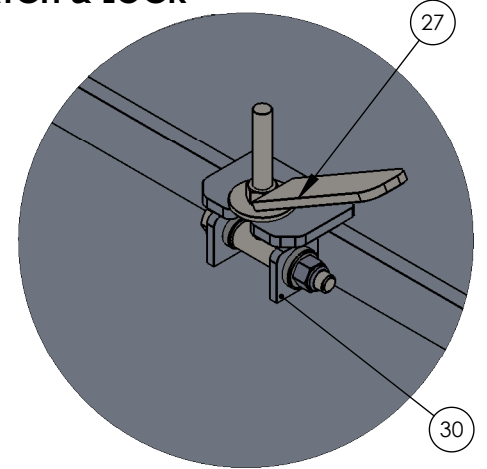
**CONVEYOR FRAME
AC560-ASM-1**

ITEM NO.	PART NUMBER	DESCRIPTION	QTY.
1	2090111-M	SPROCKET, 120B13-1.750	4
2	2090240	SPROCKET, 80B12-1.50	1
3	2090250	SPROCKET, 80B31-1.750	1
4	250-6-MS-SF-BP	Telescope Take-Up, Bryant #250-6-MS-SF-BP	2
5	2550260-R	RUBBER SKIRTING - LONG	2
6	2550261-R	RUBBER SKIRTING - SHORT	1
7	AC550	AL PL 6 1/16"x1/8"x10 3/8"L	1
8	Bearing	Rexnord P3-C228N Block Bearing	2
9	CG145-H-ASM-ALUM	CONV. SPROCKET GUARD - HYDRAULIC OPTION	1
10	CV550	SQ BAR 3/4"x3/4"	7
11	CV860-ASM	CONVEYOR MOTOR MOUNT BRACKET	1
12	CV863-ALUMINUM	AL PL, 3 7/8" x1/4" x 6 1/2"L	1
13	CV893	FRONT SKIRTING BAR (AGG BIN SIDES)	2
14	CV894	REAR SKIRTING BAR (AGG BIN SIDES)	2
15	CV895	SKIRTING BAR (CENTRE DIVIDER)	1
16	CV900	MAIN DRIVE SHAFT 1.750 (UL+)	1
17	CV910-A	IDLER SHAFT, 1.750 (UL+)	1
18	HYD MOTOR	CONVEYOR MOTOR - DANFOSS OMS 250	1
19	UL+ FEED BELT	FEED CONVEYOR	1

TRANSITION AUGER COMPONENTS



TOP LID - LATCH & LOCK



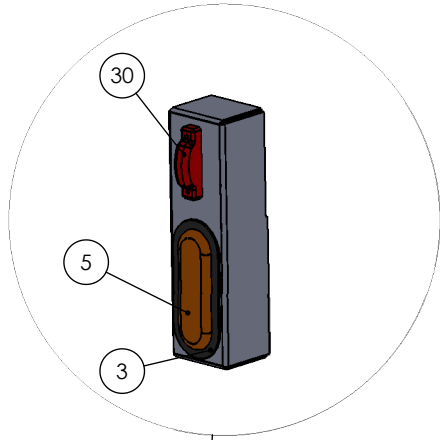
AUGER SWING COMPONENTS

DESCRIPTION
UL+ VOLUMETRIC MIXER

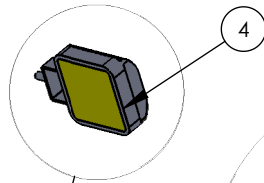
PART NUMBER
CEMENT BIN & COMPONENTS

REV.
SHEET
1 OF 5

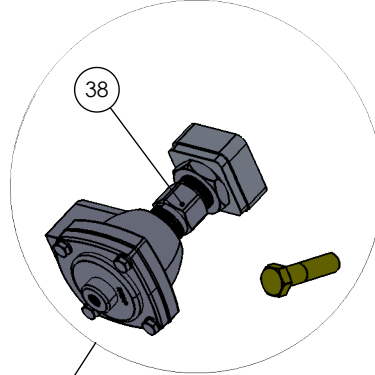
**REAR WARNING/
LED INDICATOR LIGHTS**



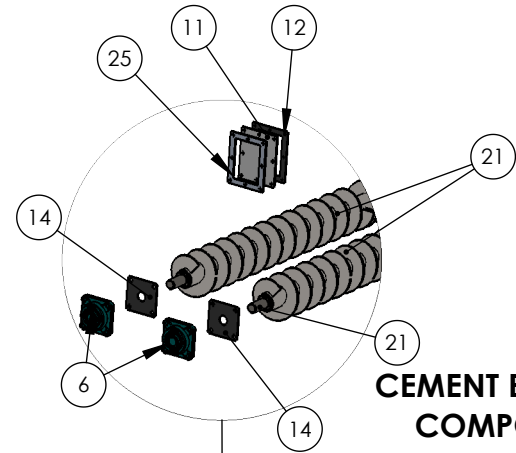
**FLOOD/WORK
LIGHT**



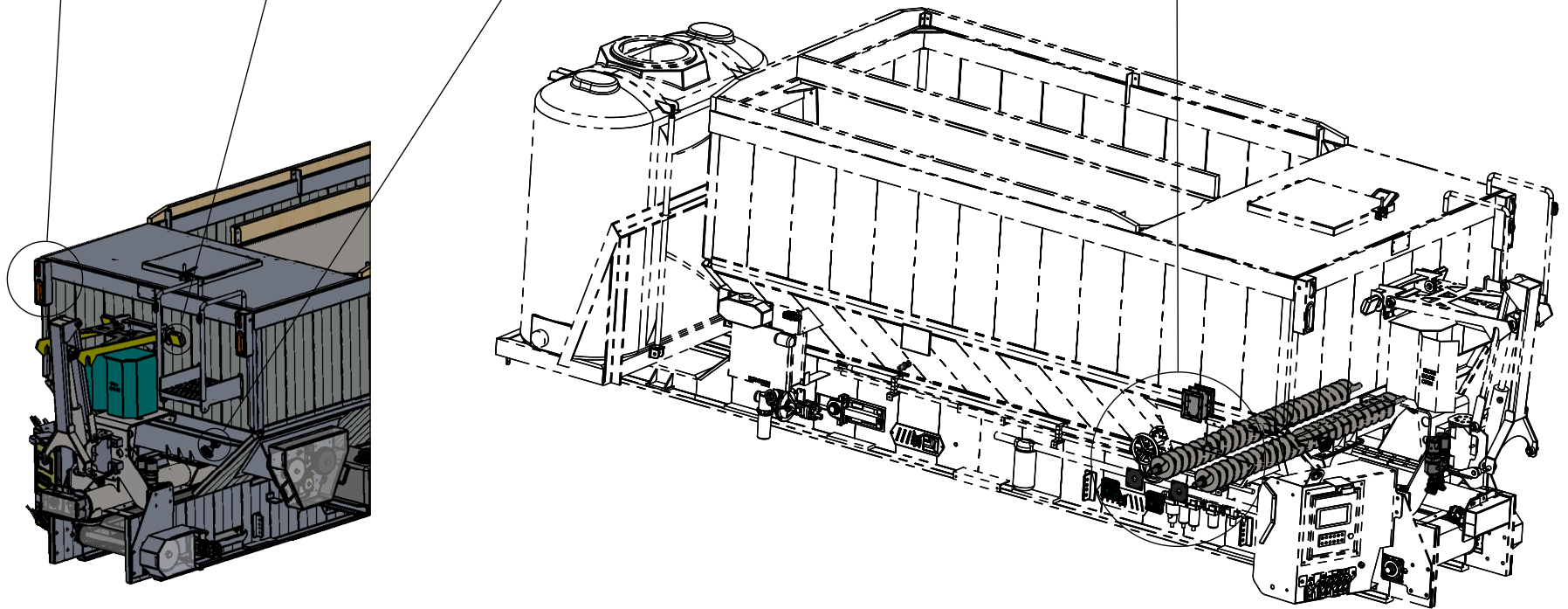
AIR SWEEP



**SIGHT WINDOW
COMPONENTS**



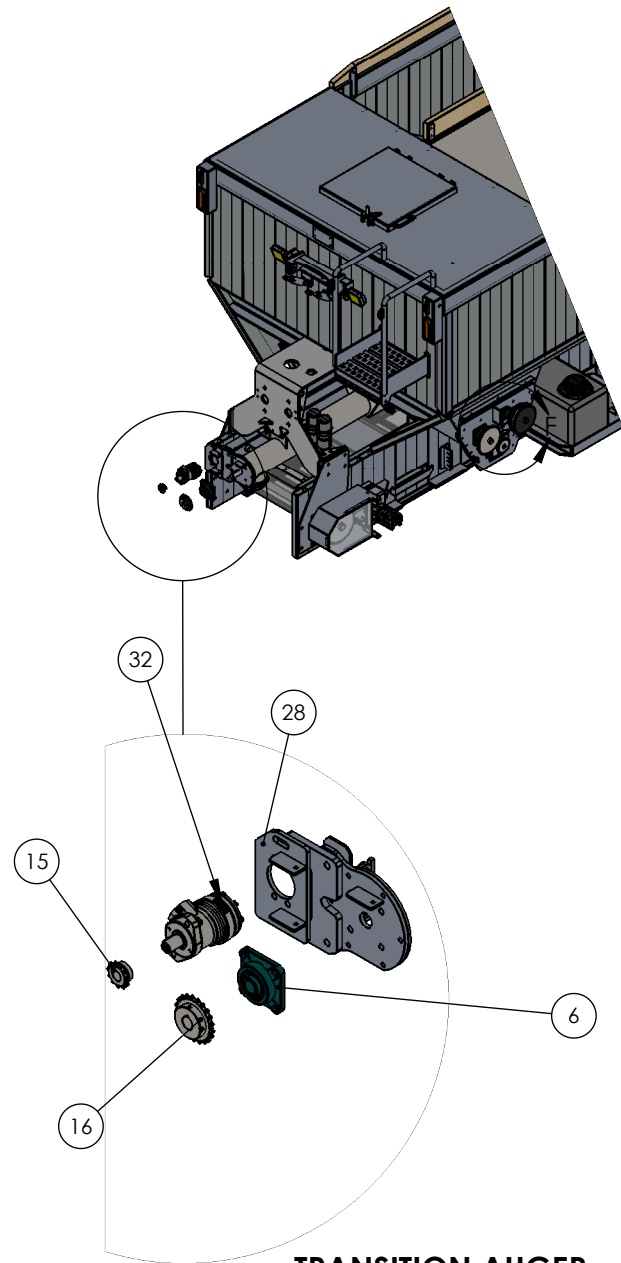
**CEMENT BIN AUGER
COMPONENTS**



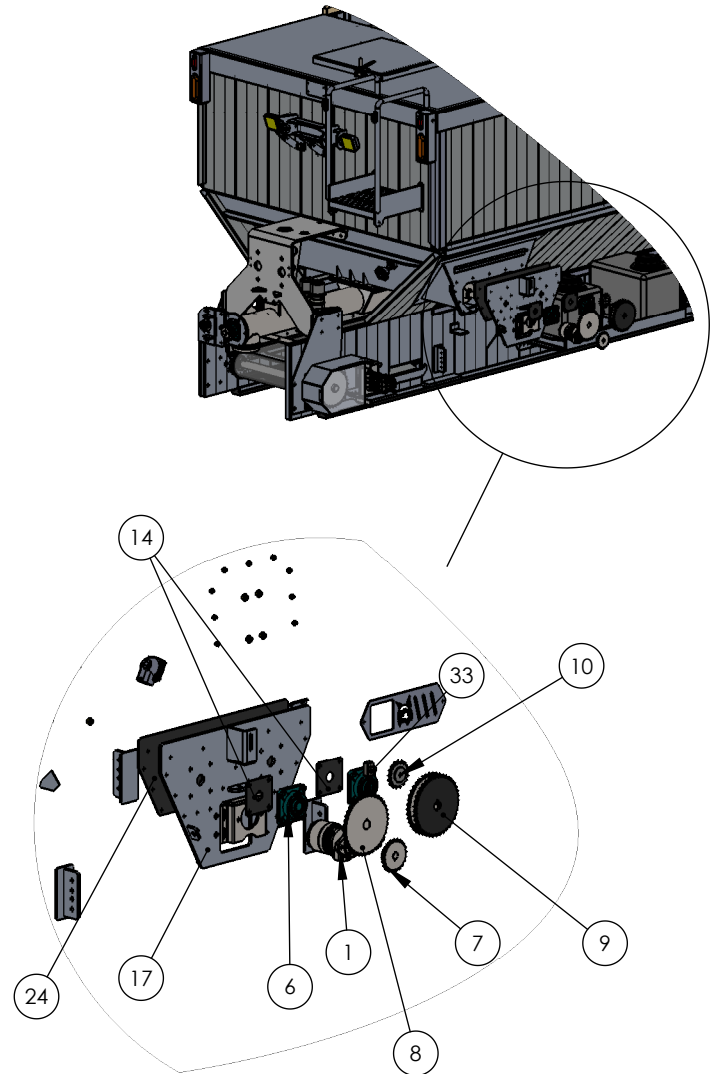
DESCRIPTION
UL+ VOLUMETRIC MIXER

PART NUMBER
CEMENT BIN & COMPONENTS

REV.
SHEET
2 OF 5



**TRANSITION AUGER
DRIVE COMPONENTS**



**CEMENT BIN
AUGER DRIVE**

DESCRIPTION
UL+ VOLUMETRIC MIXER

PART NUMBER
CEMENT BIN & COMPONENTS

REV.
SHEET
3 OF 5

**CEMENT HOPPER
BIN ASSEMBLY
AC600-ASM-1**

ITEM NO.	PART NUMBER	DESCRIPTION	QTY.
1	1100373	DAN FOSS HYDRAULIC MOTOR, OMR 250 EMD (1" Shaft)	1
2	1100400	ROTARY ACTUATOR	1
3	1750260	OVAL GROMMET	2
4	1750350	FLOOD LIGHT - 24V	3
5	1750400	OVAL LED WARNING LAMP	2
6	2010190	FLANGE BEARING / 1.25 / 4 BOLT	6
7	2090012	Sprocket, ANSI 50 Chain, 21 Tooth / Hub for 1.00" Shaft	1
8	2090047	SPROCKET, HUB, 40 Tooth / ANSI 50 Chain / 1.25" BORE	1
9	2090049	CUSTOM DBL SPROCKET, 50B40TH	1
10	2090220	IDLER SPROCKET, #50-17T	1
11	2540201	SIGHT WINDOW LENSE - SMALL	1
12	2550331	RUBBER GASKET - SIGHT WINDOW SMALL (CH111-R)	1
13	2550375	RUBBER GASKET - TX TUBE (CH116-R)	1
14	2550385	RUBBER GASKET - 4 BOLT BEARING (CH165-R)	5
15	2090043	SPROCKET, 50B11H - 1.00" BORE	1
16	2090013	SPROCKET, 50B21H - 1.25" BORE	1
17	AC615-ASM	CEMENT BIN / AUGER COVER	1
18	AC634-ASM	TRANSITION AUGER 6"	1
19	AC665-RUB	RUBBER 4"x1/16"x7"L	1
20	AD505	ADMIX PUMP MOUNT PLATE	1
21	AP190-ASM	6" AUGER - UL+ CEMENT BIN	2
22	AP195-ASM	6" TRANSITION AUGER	1
23	BM015-RUB	RUBBER GASKET, 16" x 3/16"	1
24	BM081-RUB	RUBBER GASKET, 11 5/16" x 27 7/16" x 1/8" Thick	1
25	CH111-ALUM	FRAME - SIGHT WINDOW SMALL	1
26	CH119-ASM-ALUM	LID DOOR - CEMENT HOPPER BIN	1
27	CH183-ASM	Lock - Hopper Bin Door	1
28	CH541-ASM	TX AUGER MOTOR MOUNT TENSIONER	1
29	HBU3016	HBU3016 CYL - ROTATED PORTS	1
30	MISC	RED LED MARKER LIGHT	2
31	1560000	AIR CYL, FOR SECURE HOOKS	2
31.1	1560100	REAR PIVOT BRACKET	1
31.2	1560200	AIR CYL CLEVIS	1
31.3	1560205	AIR CYL. CLEVIS PIN 1560205	
32	1100381	HYDRAULIC MOTOR - TRANSFER AUGER	1
33	SC205-ASM	SPROCKET TENSIONER BLOCK ASSEMBLY	1
34	SH115-ASM	SECURE HOOK WELDMENT	1

**CEMENT HOPPER
BIN ASSEMBLY
AC600-ASM-1**

ITEM NO.	PART NUMBER	DESCRIPTION	QTY.
35	SW150-ASM	ROTARY ACTUATOR WELDMENT	1
36	SW160-ASM	AUGER LIFT - FIRST STAGE	1
37	SW170-ASM	AUGER LIFT SECOND STAGE (HIGH-STOW)	1
38	1570030	AIR SWEEP ASSY, 3/4	4