

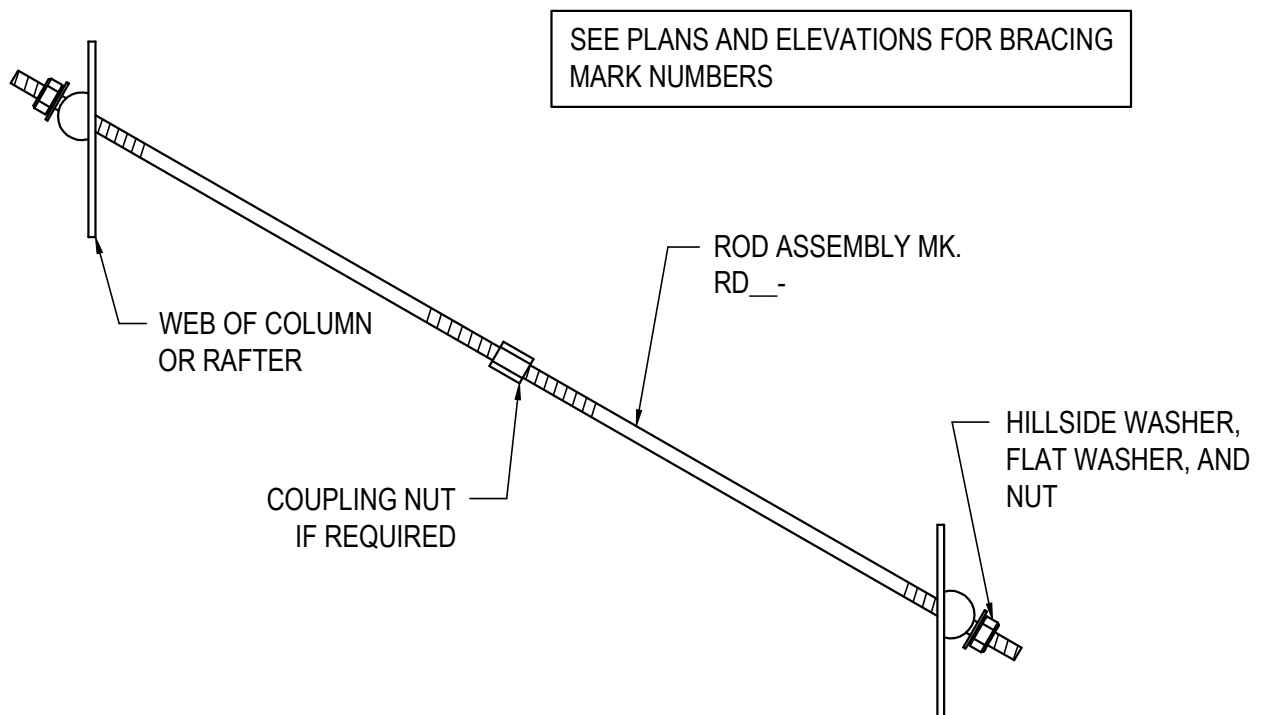
ROD, CABLE, AND SW WIND BRACING

- AF0010 - ROD BRACE DETAIL (WEB TO WEB)
 - AF0011 - PADDLE BRACE TO FLOOR (FLOOR CONNECTION)
 - AF0015 - PADDLE BRACE LOCATION DETAIL (WITH FLUSH OR INSET GIRTS AND LINER PANEL)
 - AF0016 - DOUBLE ROD PADDLE BRACE DETAIL
 - AF0020 - ROD BRACE DETAIL (PADDLE BRACE TO WEB)
 - AF0030 - ROD BRACE DETAIL (PADDLE BRACE TO PADDLE BRACE)
 - AF0040 - ROD BRACE DETAIL (WEB TO FLOOR)
 - AF0050 - ROD BRACE DETAIL (PADDLE BRACE TO FLOOR)
 - AF0071 - PORTAL FRAME TIERED ROD BRACING
 - AF0080 - GUIDELINES FOR FIELD SLOTTING SECONDARY (WEBS AT INSET OR FLUSH CONDITION)
 - AF0710 - CABLE BRACE DETAIL (WEB TO WEB)
 - AF0720 - CABLE BRACE DETAIL (PADDLE BRACE TO WEB)
 - AF0730 - CABLE BRACE DETAIL (PADDLE BRACE TO PADDLE BRACE)
 - AF0810 - WIND COLUMN BRACING DETAIL - LOWSIDE
 - AF0815 - ALTERNATE WIND COLUMN BRACING DETAIL (USED WHEN JOIST ARE BETWEEN WBC03 & WBP01)
 - AF0820 - WIND COLUMN BRACING DETAIL - HIGHSIDE
 - AF0830 - WIND COLUMN BRACING DETAIL - LOWSIDE WITH PURLINS
 - AF0840 - WIND COLUMN BRACING DETAIL - HIGHSIDE WITH PURLINS
-

AF0010 - ROD BRACE DETAIL (WEB TO WEB)

[Download the DWG file by clicking here.](#)

ROD DIAMETER	MARK NUMBER	HILLSIDE WASHERS	FLAT WASHERS	A307/A325 NUTS	COUPLING NUTS
5/8" Ø	RD05-	(2) H0930	(2) H0210	(2) H0310	H0810
3/4" Ø	RD06-	(2) H0930	(2) H0220	(2) H0320	H0820
7/8" Ø	RD07-	(2) H0930	(2) H0230	(2) H0325	H0830
1" Ø	RD08-	(2) H0960	(2) H0240	(2) H0330	H0840
1 1/8" Ø	RD09-	(2) H0960	(2) H0250	(2) H0450	H0850
1 1/4" Ø	RD10-	(2) H0960	(2) H0260	(2) H0340	H0860



ROD BRACE DETAIL

WEB TO WEB

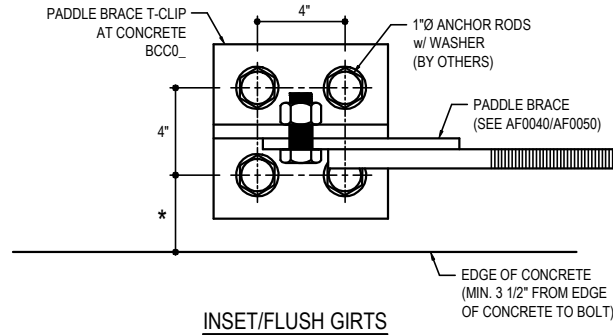
AF0010

Detailer Notes:

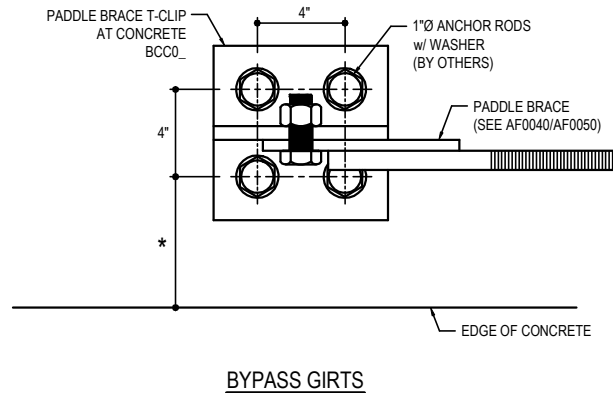
- 1) IF SPLICING TWO RODS TOGETHER COUPLING NUTS ARE REQUIRED. CHECK WITH YOUR SHOP FOR PRODUCTION LIMITATIONS FOR MAXIMUM/MINIMUM ROD LENGTHS.

AF0011 - PADDLE BRACE TO FLOOR (FLOOR CONNECTION)

[Download the DWG file by clicking here.](#)



FLUSH GIRTS		INSET GIRTS	
COL. ANCHOR ROD	* DIMENSION	COL. ANCHOR ROD	* DIMENSION
3/4" Ø	3 1/2"	3/4" Ø	4"
1" Ø	4"	1" Ø	5"
1 1/4" Ø	4 1/2"	1 1/4" Ø	5 1/2"



8" BYPASS GIRTS		9 1/2" BYPASS GIRTS		12" BYPASS GIRTS	
COL. ANCHOR ROD	* DIMENSION	COL. ANCHOR ROD	* DIMENSION	COL. ANCHOR ROD	* DIMENSION
3/4" Ø	11"	3/4" Ø	1'-0 1/2"	3/4" Ø	1'-3"
1" Ø	1'-0"	1" Ø	1'-1 1/2"	1" Ø	1'-4"
1 1/4" Ø	1'-0 1/2"	1 1/4" Ø	1'-2"	1 1/4" Ø	1'-4 1/2"

PADDLE BRACE TO FLOOR
FLOOR CONNECTION

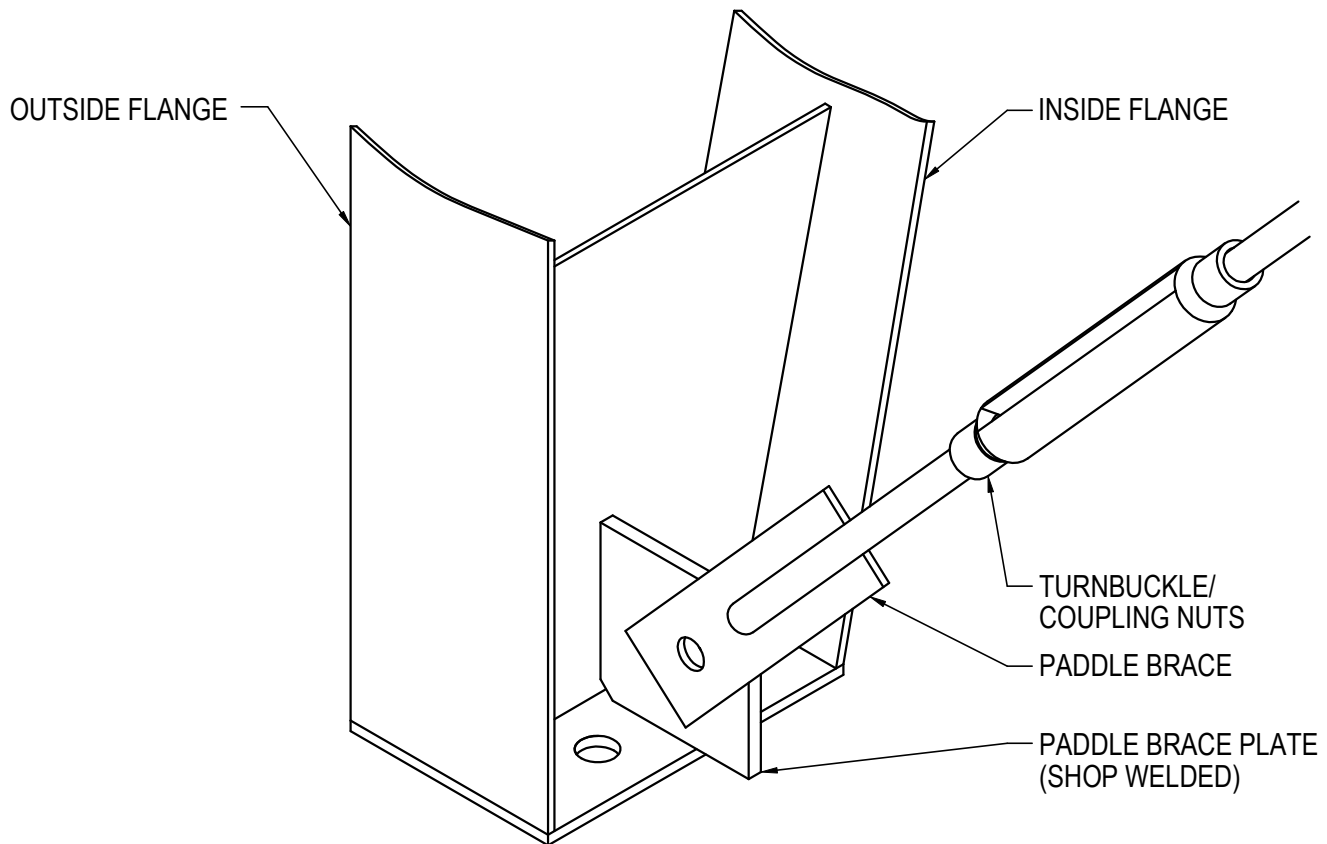
AF0011

Detailer Notes:

- 1) FOR BCC STANDARD PART MARKS AND THEIR LOCATIONS, SEE THE FABRICATED PARTS MANUAL AND THE DETAILING PROCEDURES MANUAL.
- 2) COLUMN ANCHOR ROD IS BASED ON ROD CONNECTION AT COLUMN

AF0015 - PADDLE BRACE LOCATION DETAIL (WITH FLUSH OR INSET GIRTS AND LINER PANEL)

[Download the DWG file by clicking here.](#)



ERECTOR NOTE

THE PADDLE BRACE CAN BE ATTACHED ON EITHER SIDE OF THE PADDLE BRACE PLATE. HOWEVER, IF LINER PANEL IS TO BE INSTALLED, IT WILL NEED TO BE ATTACHED AS SHOWN ABOVE (TOWARD THE COLUMN OUTSIDE FLANGE)

PADDLE BRACE LOCATION DETAIL

WITH FLUSH OR INSET GIRTS AND LINER PANEL

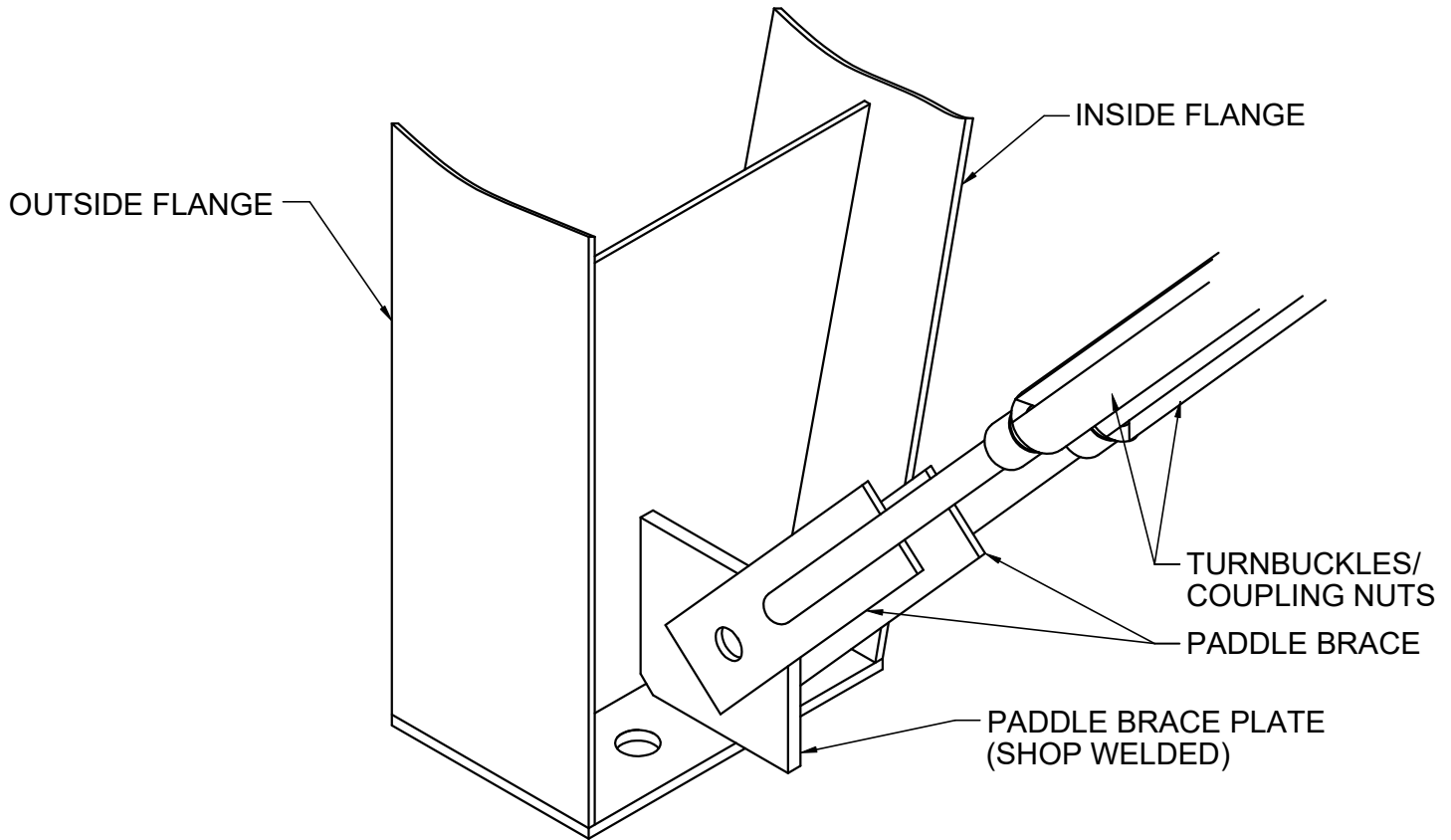
AF0015

Detailer Notes:

- 1) SHOP WELDED PLATE IS A BCP___. FOR STANDARD PART MARKS AND THEIR LOCATIONS, SEE THE FABRICATED PARTS MANUAL AND THE DETAILING PROCEDURES MANUAL.

AF0016 - DOUBLE ROD PADDLE BRACE DETAIL

[Download the DWG file by clicking here.](#)



ERECTOR NOTE

FOR DOUBLE ROD BRACING, THE PADDLE BRACE(S) MUST BE ATTACHED ON BOTH SIDES OF THE 1" SPECIAL PLATE. TOED OPPOSITE ONE ANOTHER, AS SHOWN. RODS NEED TO BE TENSIONED EQUALLY.

DOUBLE ROD PADDLE BRACING DETAIL

AF0016

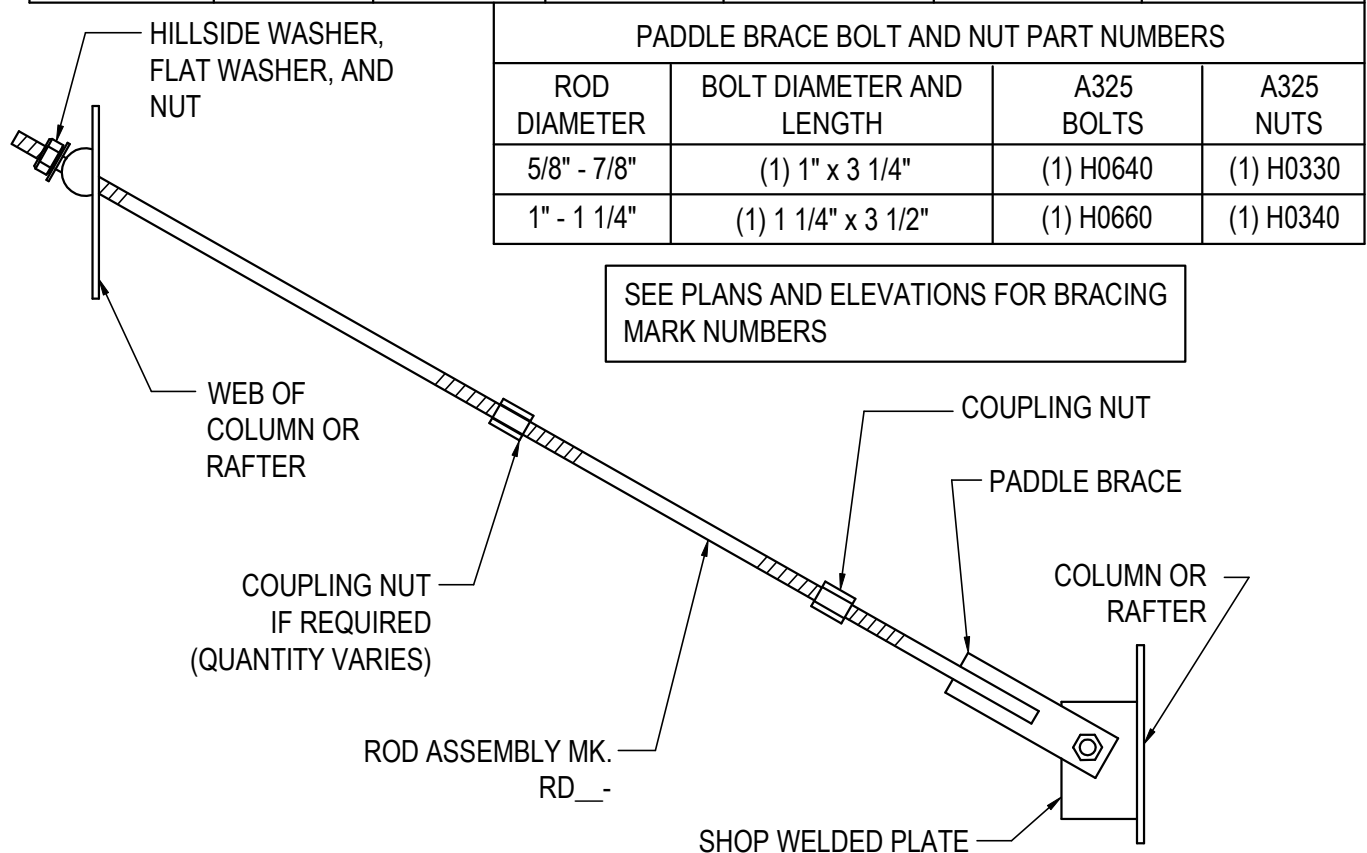
Detailer Notes:

- 1) SHOP WELDED PLATE IS A BCP___. FOR STANDARD PART MARKS AND THEIR LOCATIONS, SEE THE FABRICATED PARTS MANUAL AND THE DETAILING PROCEDURES MANUAL.

AF0020 - ROD BRACE DETAIL (PADDLE BRACE TO WEB)

[Download the DWG file by clicking here.](#)

ROD DIAMETER	MARK NUMBER	HILLSIDE WASHERS	FLAT WASHERS	A307/A325 NUTS	PADDLE BRACE	COUPLING NUTS
5/8" Ø	RD05-	(1) H0930	(1) H0210	(1) H0310	(1) BCS07	(1) H0810
3/4" Ø	RD06-	(1) H0930	(1) H0220	(1) H0320	(1) BCS08	(1) H0820
7/8" Ø	RD07-	(1) H0930	(1) H0230	(1) H0325	(1) BCS09	(1) H0830
1" Ø	RD08-	(1) H0960	(1) H0240	(1) H0330	(1) BCL06	(1) H0840
1 1/8" Ø	RD09-	(1) H0960	(1) H0250	(1) H0450	(1) BCL03	(1) H0850
1 1/4" Ø	RD10-	(1) H0960	(1) H0260	(1) H0340	(1) BCL04	(1) H0860



ROD BRACE DETAIL

PADDLE BRACE TO WEB

AF0020

Detailer Notes:

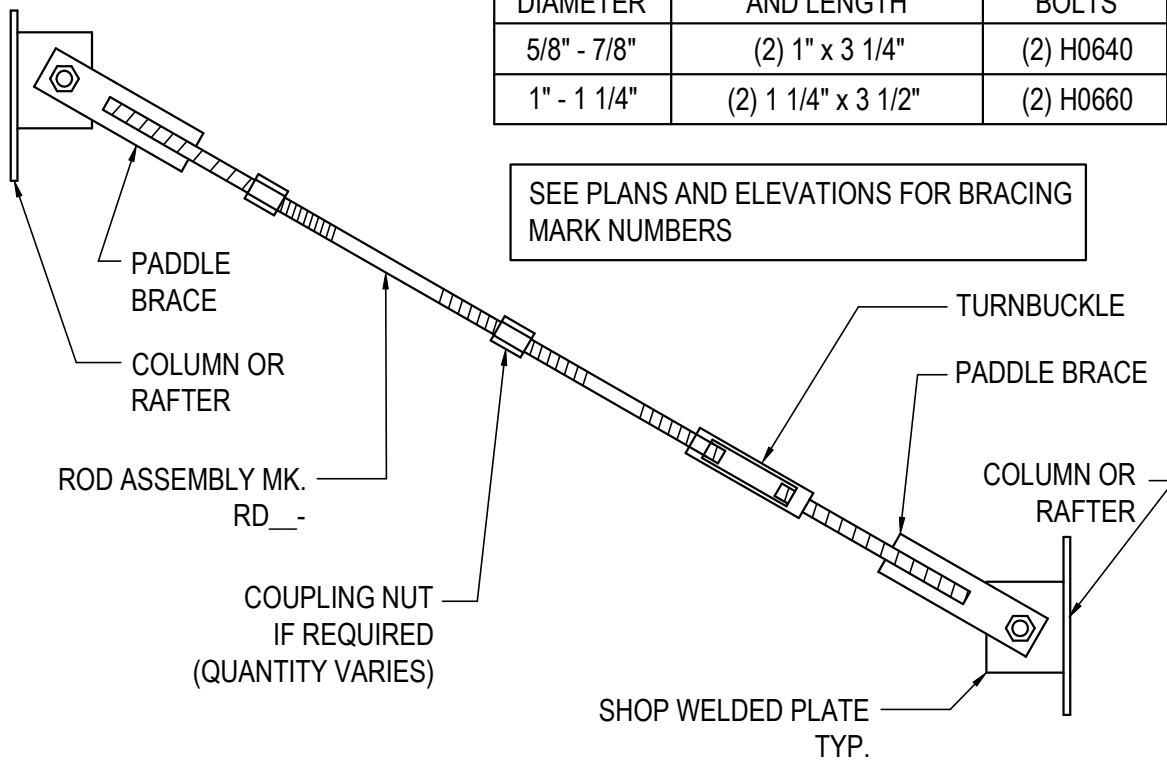
- 1) IF SPLICING TWO RODS TOGETHER COUPLING NUTS ARE REQUIRED. CHECK WITH YOUR SHOP FOR PRODUCTION LIMITATIONS FOR MAXIMUM/MINIMUM ROD LENGTHS.
- 2) FOR BCP AND BCH STANDARD PART MARKS AND THEIR LOCATIONS, SEE THE FABRICATED PARTS MANUAL AND THE DETAILING PROCEDURES MANUAL.

AF0030 - ROD BRACE DETAIL (PADDLE BRACE TO PADDLE BRACE)

[Download the DWG file by clicking here.](#)

ROD DIAMETER	MARK NUMBER	TURNBUCKLES	COUPLING NUTS	PADDLE BRACE (AT TURNBUCKLE)	PADDLE BRACE (AT COUPLING NUT)
5/8" Ø	RD05-	(1) H0715	H0810	(1) BCS02	(1) BCS07
3/4" Ø	RD06-	(1) H0725	H0820	(1) BCS03	(1) BCS08
7/8" Ø	RD07-	(1) H0735	H0830	(1) BCS04	(1) BCS09
1" Ø	RD08-	(1) H0745	H0840	(1) BCL05	(1) BCL06
1 1/8" Ø	RD09-	(1) H0755	H0850	(1) BCL01	(1) BCL03
1 1/4" Ø	RD10-	(1) H0765	H0860	(1) BCL02	(1) BCL04

PADDLE BRACE BOLT AND NUT PART NUMBERS			
ROD DIAMETER	BOLT DIAMETER AND LENGTH	A325 BOLTS	A325 NUTS
5/8" - 7/8"	(2) 1" x 3 1/4"	(2) H0640	(2) H0330
1" - 1 1/4"	(2) 1 1/4" x 3 1/2"	(2) H0660	(2) H0340



ROD BRACE DETAIL

PADDLE BRACE TO PADDLE BRACE

AF0030

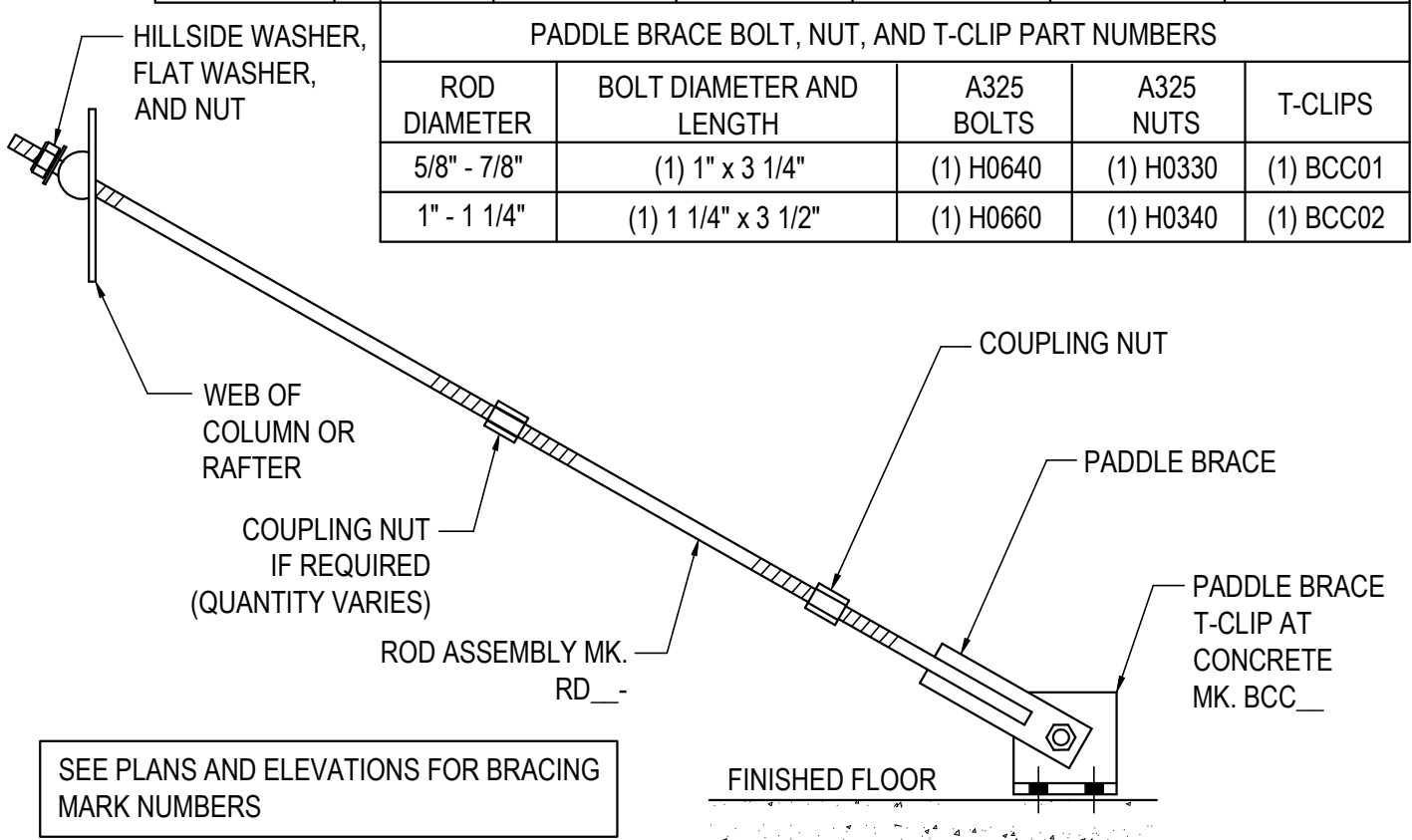
Detailer Notes:

- 1) IF SPLICING TWO RODS TOGETHER COUPLING NUTS ARE REQUIRED. CHECK WITH YOUR SHOP FOR PRODUCTION LIMITATIONS FOR MAXIMUM/MINIMUM ROD LENGTHS.
- 2) FOR BCP AND BCH STANDARD PART MARKS AND THEIR LOCATIONS, SEE THE FABRICATED PARTS MANUAL AND THE DETAILING PROCEDURES MANUAL.

AF0040 - ROD BRACE DETAIL (WEB TO FLOOR)

[Download the DWG file by clicking here.](#)

ROD DIAMETER	MARK NUMBER	HILLSIDE WASHERS	FLAT WASHERS	A307/A325 NUTS	PADDLE BRACE	COUPLING NUTS
5/8" Ø	RD05-	(1) H0930	(1) H0210	(1) H0310	(1) BCS07	(1) H0810
3/4" Ø	RD06-	(1) H0930	(1) H0220	(1) H0320	(1) BCS08	(1) H0820
7/8" Ø	RD07-	(1) H0930	(1) H0230	(1) H0325	(1) BCS09	(1) H0830
1" Ø	RD08-	(1) H0960	(1) H0240	(1) H0330	(1) BCL06	(1) H0840
1 1/8" Ø	RD09-	(1) H0960	(1) H0250	(1) H0450	(1) BCL03	(1) H0850
1 1/4" Ø	RD10-	(1) H0960	(1) H0260	(1) H0340	(1) BCL04	(1) H0860



PADDLE BRACE BOLT, NUT, AND T-CLIP PART NUMBERS				
ROD DIAMETER	BOLT DIAMETER AND LENGTH	A325 BOLTS	A325 NUTS	T-CLIPS
5/8" - 7/8"	(1) 1" x 3 1/4"	(1) H0640	(1) H0330	(1) BCC01
1" - 1 1/4"	(1) 1 1/4" x 3 1/2"	(1) H0660	(1) H0340	(1) BCC02

ROD BRACE DETAIL

WEB TO FLOOR

AF0040

Detailer Notes:

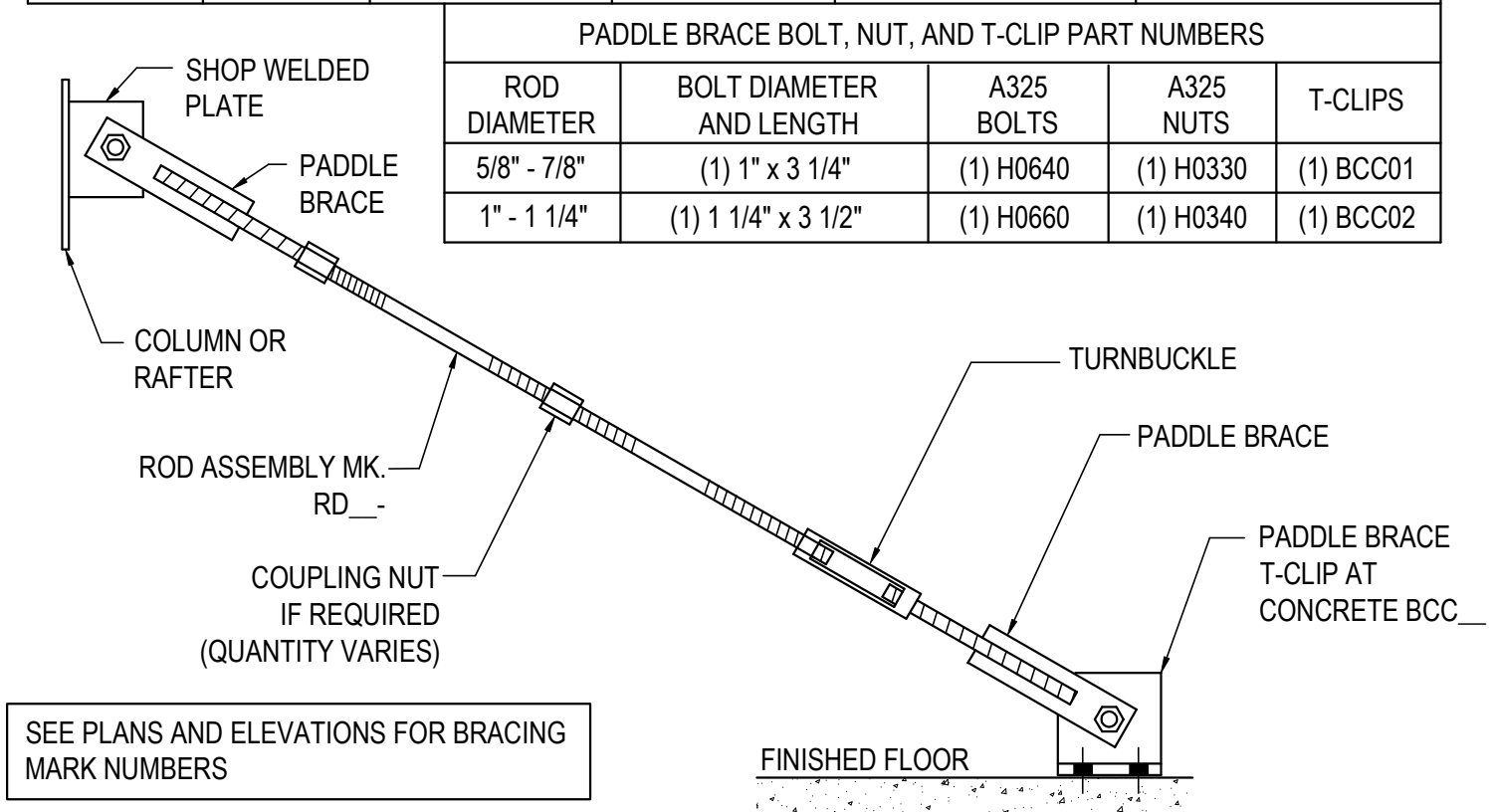
- 1) IF SPLICING TWO RODS TOGETHER COUPLING NUTS ARE REQUIRED. CHECK WITH YOUR SHOP FOR PRODUCTION LIMITATIONS FOR MAXIMUM/MINIMUM ROD LENGTHS.

AF0050 - ROD BRACE DETAIL (PADDLE BRACE TO FLOOR)

[Download the DWG file by clicking here.](#)

ROD DIAMETER	MARK NUMBER	TURNBUCKLES	COUPLING NUTS	PADDLE BRACE (AT TURNBUCKLE)	PADDLE BRACE (AT COUPLING NUT)
5/8" Ø	RD05-	(1) H0715	H0810	(1) BCS02	(1) BCS07
3/4" Ø	RD06-	(1) H0725	H0820	(1) BCS03	(1) BCS08
7/8" Ø	RD07-	(1) H0735	H0830	(1) BCS04	(1) BCS09
1" Ø	RD08-	(1) H0745	H0840	(1) BCL05	(1) BCL06
1 1/8" Ø	RD09-	(1) H0755	H0850	(1) BCL01	(1) BCL03
1 1/4" Ø	RD10-	(1) H0765	H0860	(1) BCL02	(1) BCL04

PADDLE BRACE BOLT, NUT, AND T-CLIP PART NUMBERS				
ROD DIAMETER	BOLT DIAMETER AND LENGTH	A325 BOLTS	A325 NUTS	T-CLIPS
5/8" - 7/8"	(1) 1" x 3 1/4"	(1) H0640	(1) H0330	(1) BCC01
1" - 1 1/4"	(1) 1 1/4" x 3 1/2"	(1) H0660	(1) H0340	(1) BCC02



ROD BRACE DETAIL

PADDLE BRACE TO FLOOR

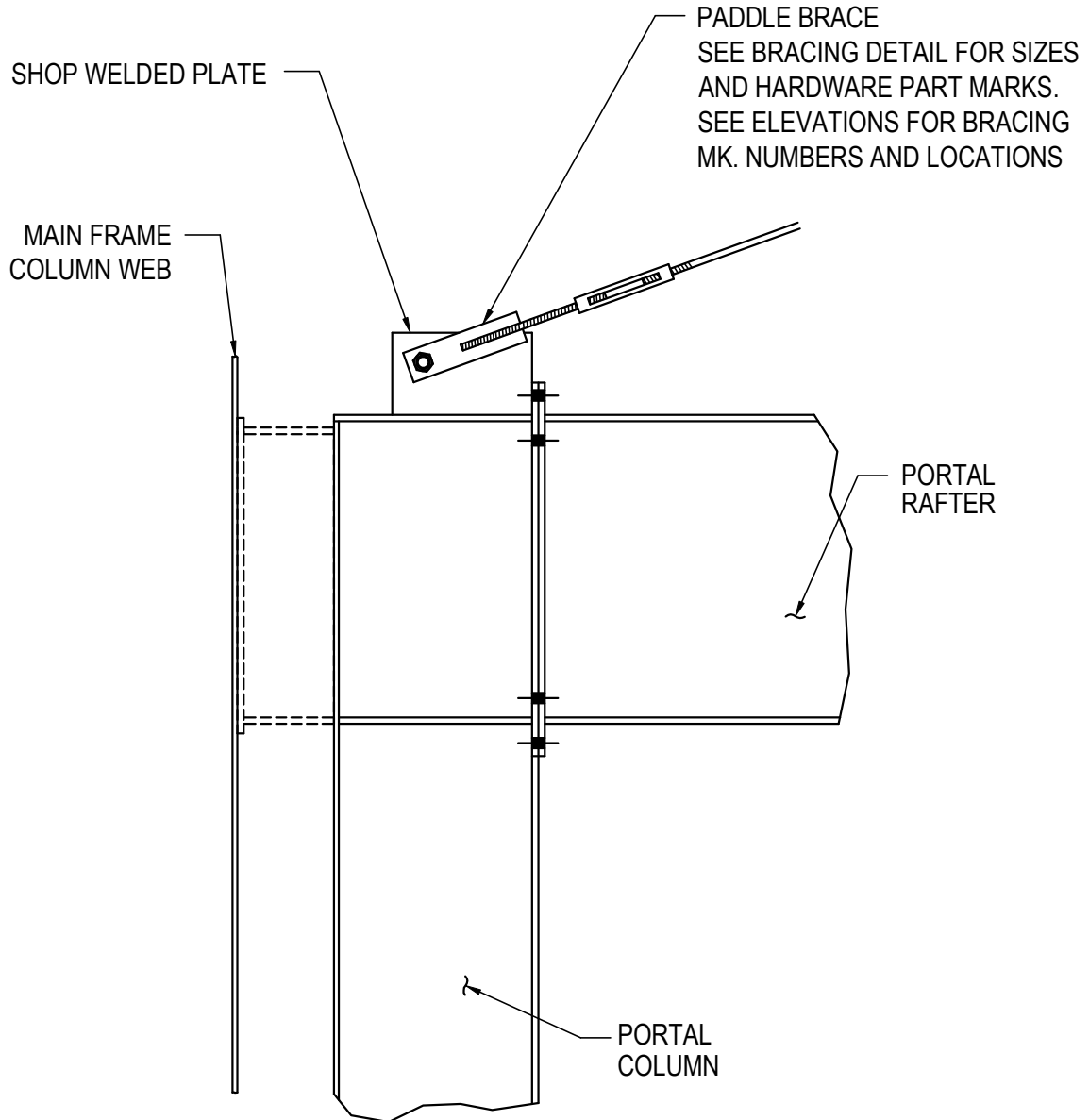
AF0050

Detailer Notes:

- 1) IF SPLICING TWO RODS TOGETHER COUPLING NUTS ARE REQUIRED. CHECK WITH YOUR SHOP FOR PRODUCTION LIMITATIONS FOR MAXIMUM/MINIMUM ROD LENGTHS.

AF0071 - PORTAL FRAME TIERED ROD BRACING

[Download the DWG file by clicking here.](#)



PORTAL FRAME TIERED ROD BRACING

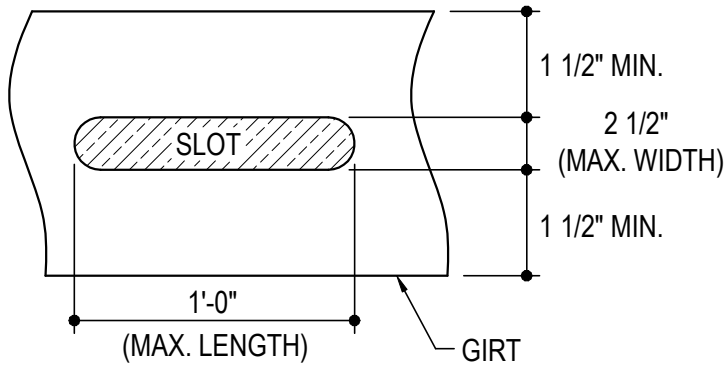
AF0071

Detailer Notes:

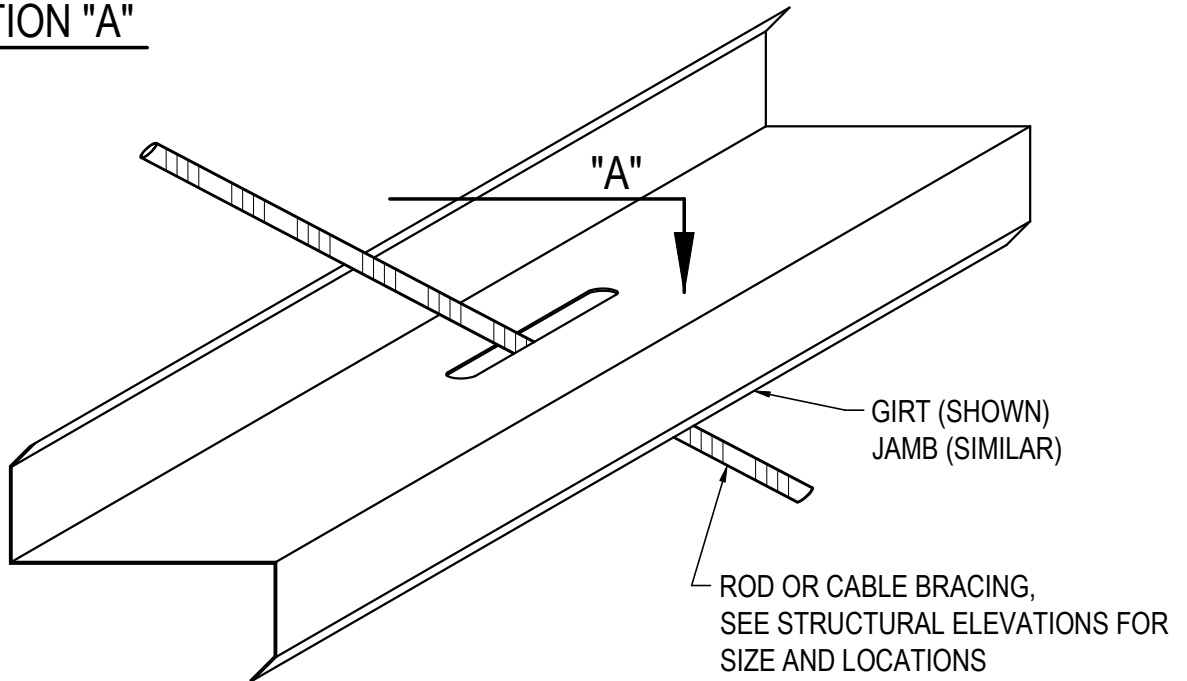
- 1) SHOP WELDED PLATE IS A BCH___. FOR STANDARD PART MARKS AND THEIR LOCATIONS, SEE THE FABRICATED PARTS MANUAL AND THE DETAILING PROCEDURES MANUAL.

AF0080 - GUIDELINES FOR FIELD SLOTTING SECONDARY (WEBS AT INSET OR FLUSH CONDITION)

[Download the DWG file by clicking here.](#)



SECTION "A"



GUIDELINES FOR FIELD SLOTTING SECONDARY

WEBS AT INSET OR FLUSH CONDITION

AF0080

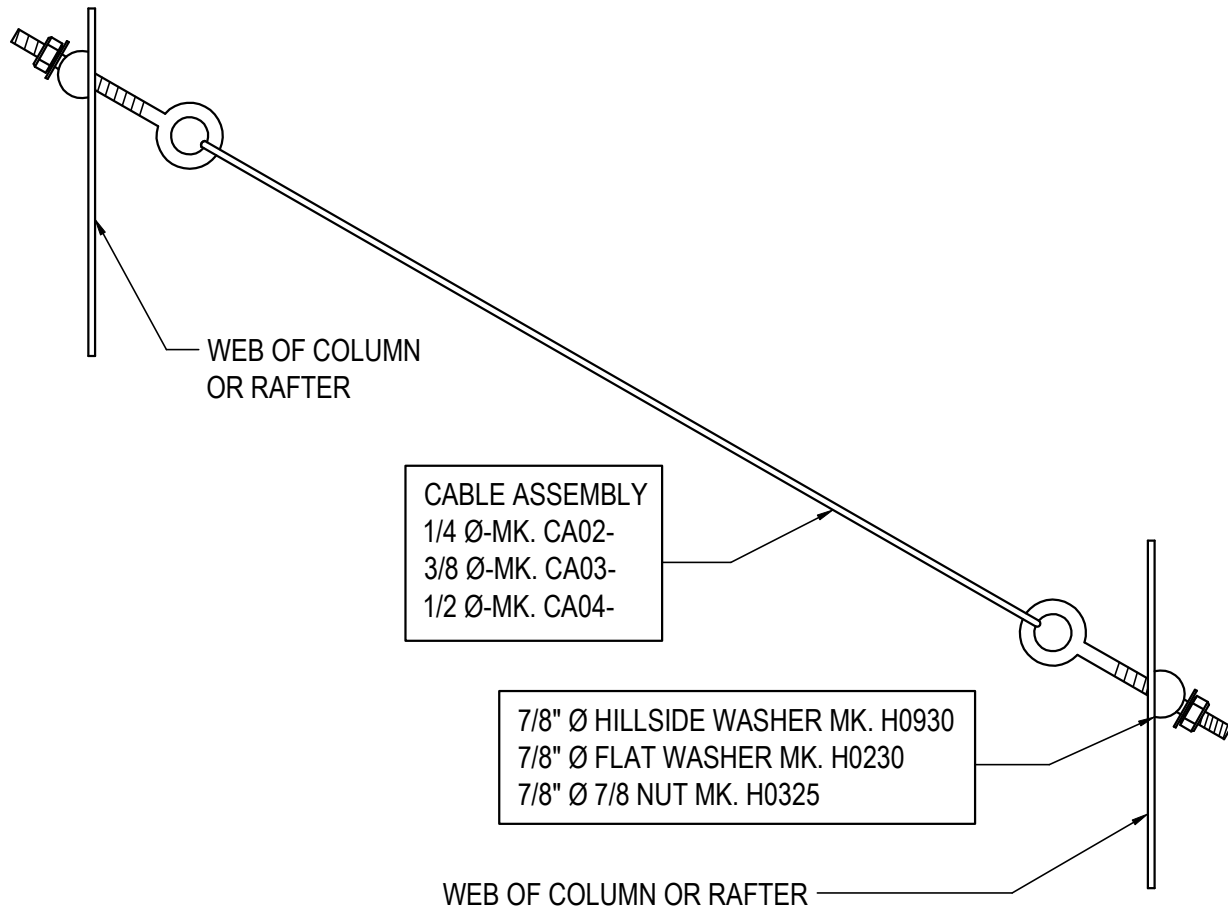
Detailer Notes:

- 1) N/A

AF0710 - CABLE BRACE DETAIL (WEB TO WEB)

[Download the DWG file by clicking here.](#)

SEE PLANS AND ELEVATIONS FOR
BRACING MARK NUMBERS



CABLE BRACE DETAIL

WEB TO WEB

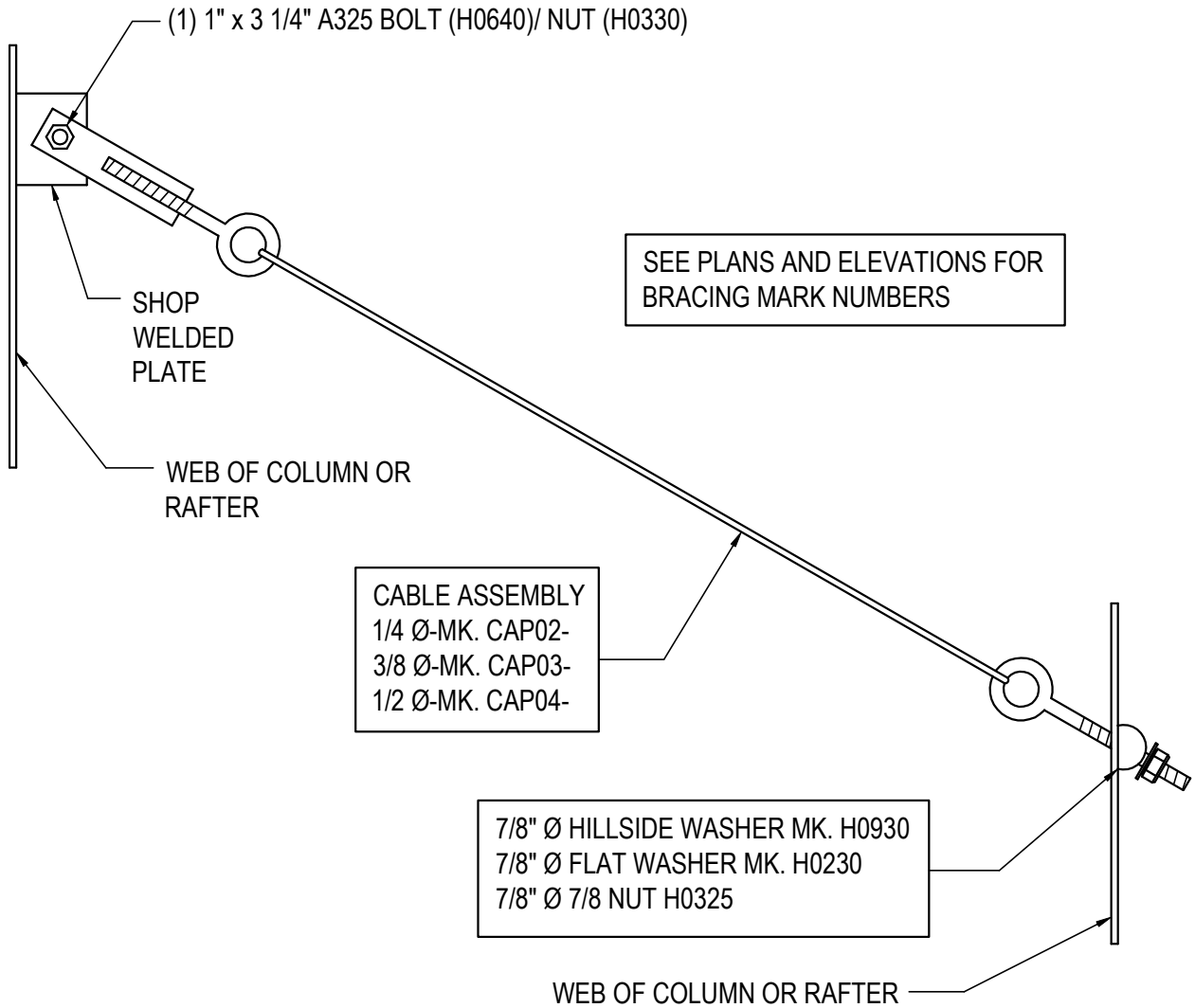
AF0710

Detailer Notes:

- 1) N/A

AF0720 - CABLE BRACE DETAIL (PADDLE BRACE TO WEB)

[Download the DWG file by clicking here.](#)



CABLE BRACE DETAIL

PADDLE BRACE TO WEB

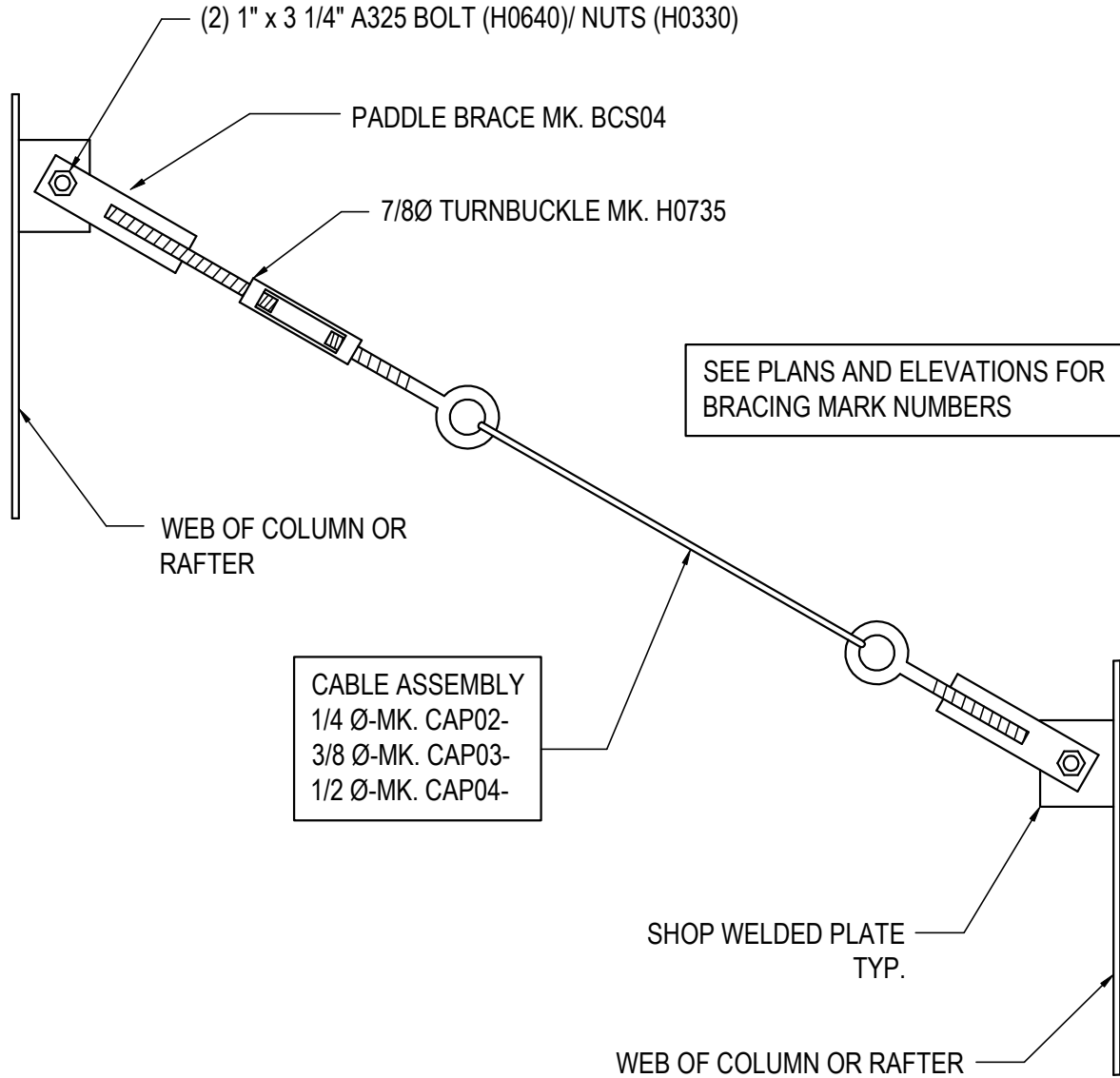
AF0720

Detailer Notes:

1) SHOP WELDED PLATE IS A BCP __. FOR STANDARD PART MARKS AND THEIR LOCATIONS, SEE THE FABRICATED PARTS MANUAL AND THE DETAILING PROCEDURES MANUAL.

AF0730 - CABLE BRACE DETAIL (PADDLE BRACE TO PADDLE BRACE)

[Download the DWG file by clicking here.](#)



CABLE BRACE DETAIL

PADDLE BRACE TO PADDLE BRACE

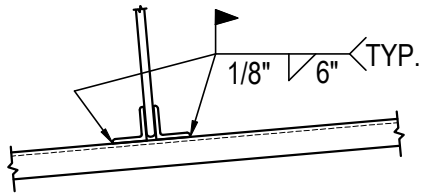
AF0730

Detailer Notes:

- 1) SHOP WELDED CLIP SHOWN IS A BCP01

AF0810 - WIND COLUMN BRACING DETAIL - LOWSIDE

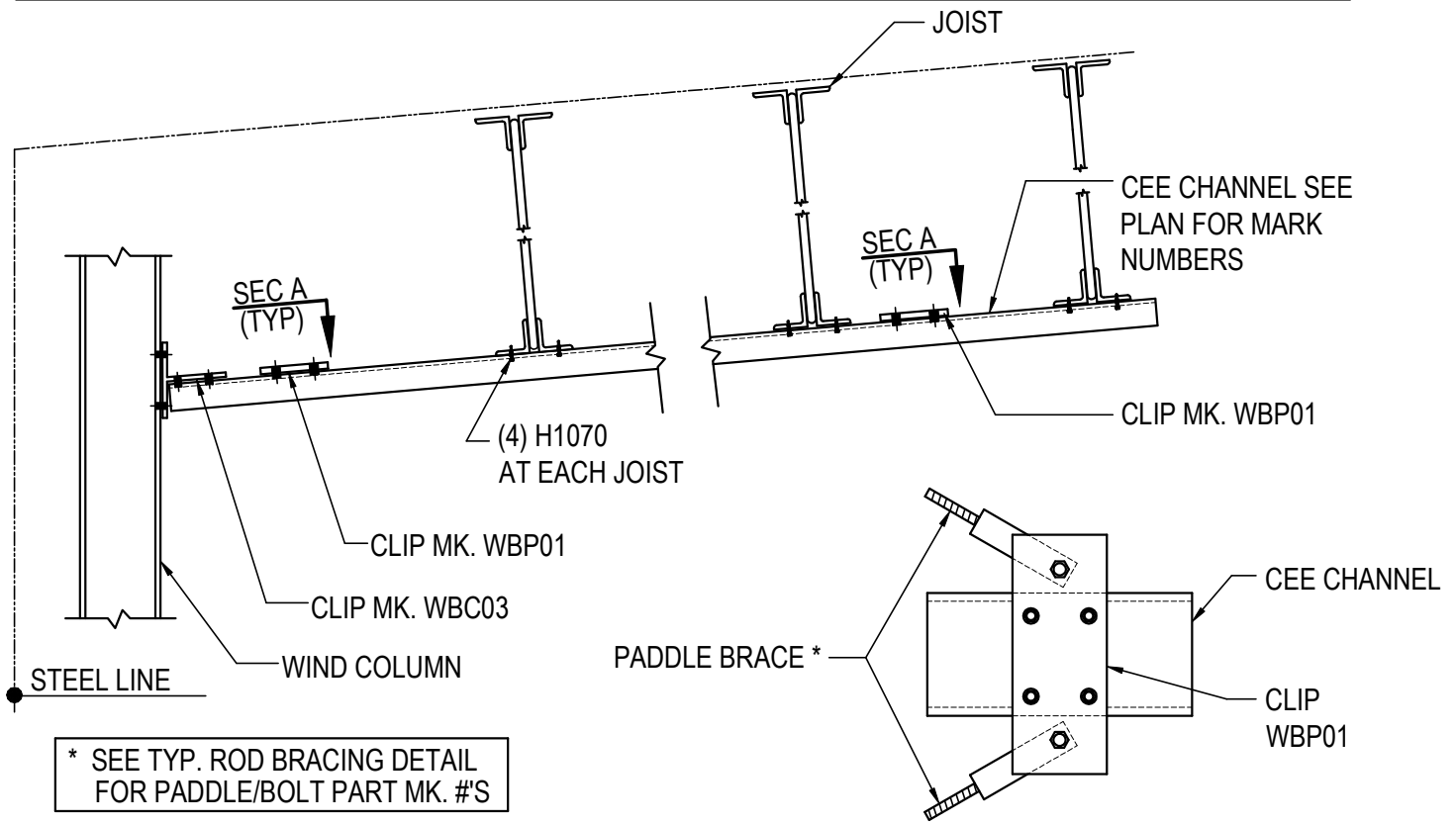
[Download the DWG file by clicking here.](#)



OPTIONAL FIELD WELD

ERECTOR NOTE:

ALL FIELD WELDS ARE TO BE IN ACCORDANCE WITH AWS SPECIFICATIONS AND ARE TO BE WELDED BY A CERTIFIED WELDER QUALIFIED FOR THE GIVEN APPLICATIONS.



* SEE TYP. ROD BRACING DETAIL FOR PADDLE/BOLT PART MK. #'S

NOTE:
USE (16) 1/2" X 2" A325 BOLTS H0603/ NUTS
H0300 AT CEE CHANNEL

SECTION "A"

WIND COLUMN BRACING DETAIL - LOWSIDE

REFERENCE ERECTOR NOTE FOR TYPICAL WASHER REQUIREMENTS

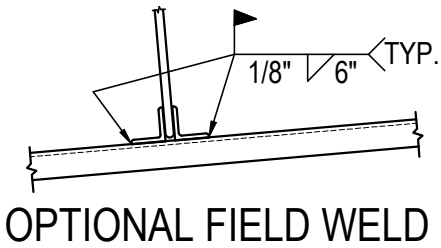
AF0810

Detailer Notes:

- 1) N/A

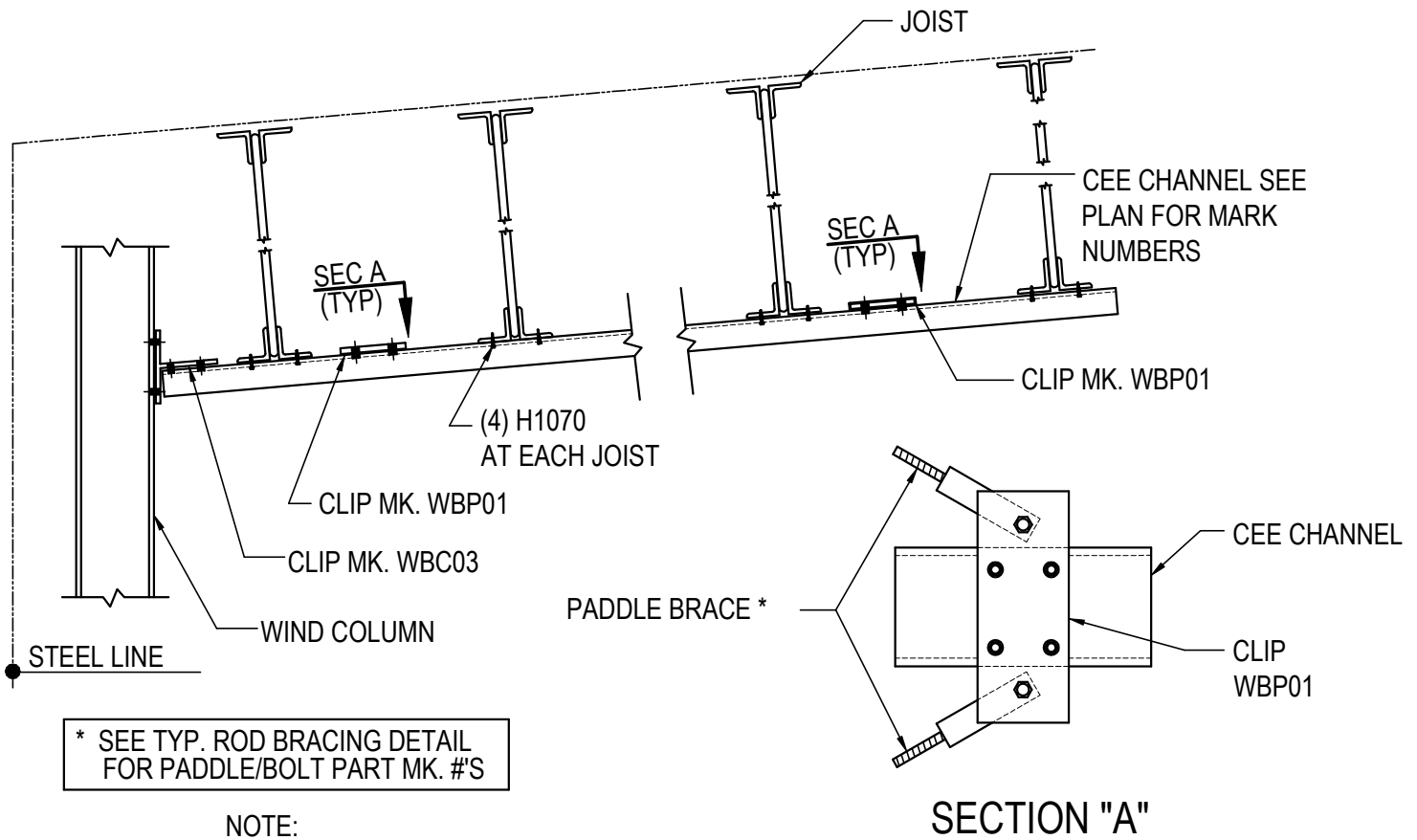
AF0815 - ALTERNATE WIND COLUMN BRACING DETAIL (USED WHEN JOIST ARE BETWEEN WBC03 & WBP01)

[Download the DWG file by clicking here.](#)



ERECTOR NOTE:

ALL FIELD WELDS ARE TO BE IN ACCORDANCE WITH AWS SPECIFICATIONS AND ARE TO BE WELDED BY A CERTIFIED WELDER QUALIFIED FOR THE GIVEN APPLICATIONS.



* SEE TYP. ROD BRACING DETAIL FOR PADDLE/BOLT PART MK. #S

NOTE:
USE (16) 1/2"X 2" A325 BOLTS H0603/ NUTS H0300 AT CEE CHANNEL

ALTERNATE WIND COLUMN BRACING DETAIL

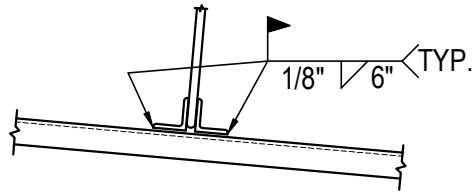
USED WHEN JOIST ARE BETWEEN WBC03 AND WBP01
REFERENCE ERECTOR NOTE FOR TYPICAL WASHER REQUIREMENTS

AF0815

Detailer Notes:
1) N/A

AF0820 - WIND COLUMN BRACING DETAIL - HIGHSIDE

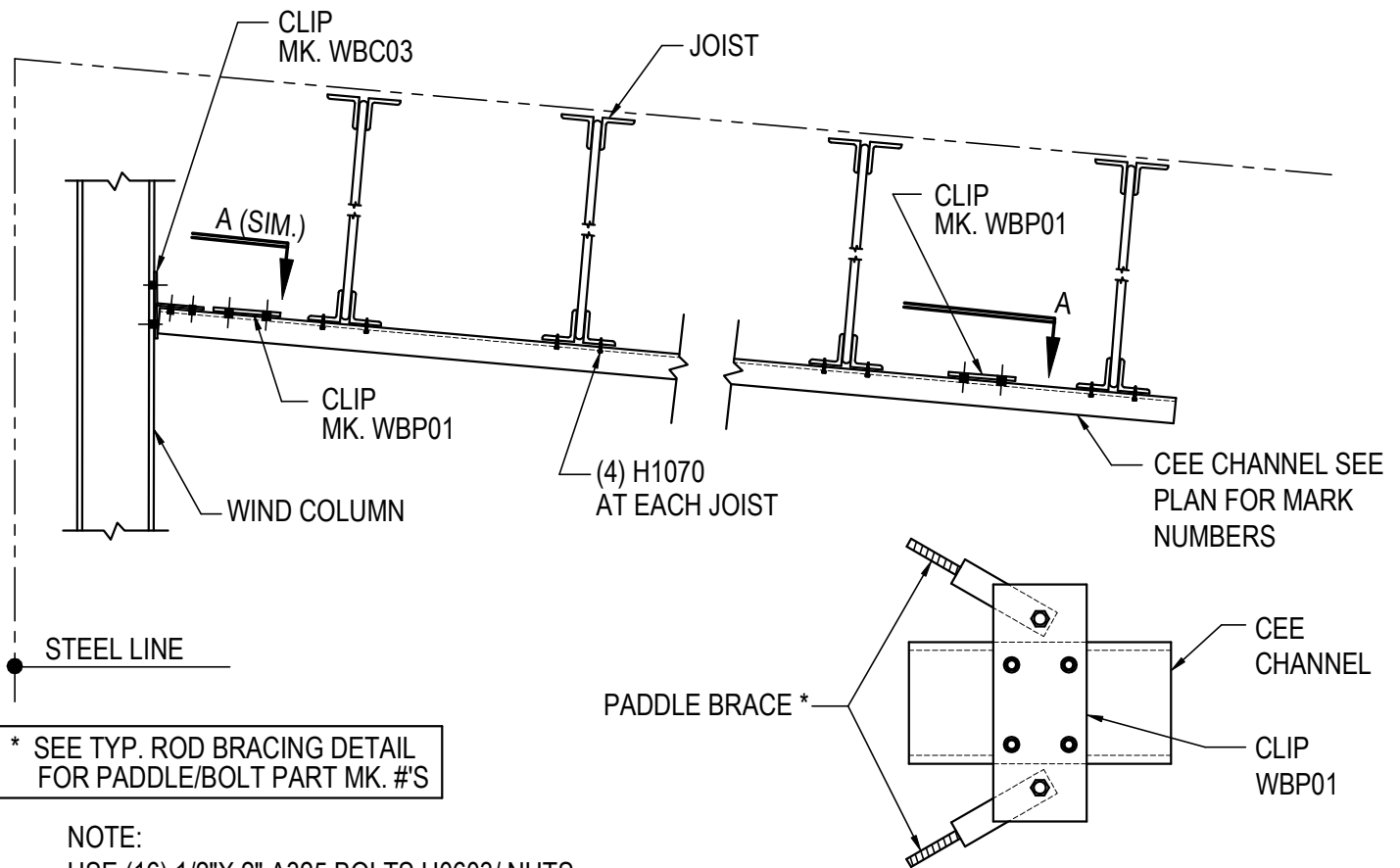
[Download the DWG file by clicking here.](#)



OPTIONAL FIELD WELD

ERECTOR NOTE:

ALL FIELD WELDS ARE TO BE IN ACCORDANCE WITH AWS SPECIFICATIONS AND ARE TO BE WELDED BY A CERTIFIED WELDER QUALIFIED FOR THE GIVEN APPLICATIONS.



* SEE TYP. ROD BRACING DETAIL FOR PADDLE/BOLT PART MK. #'S

NOTE:
USE (16) 1/2" X 2" A325 BOLTS H0603/ NUTS H0300 AT CEE CHANNEL

SECTION "A"

WIND COLUMN BRACING DETAIL - HIGHSIDE

REFERENCE ERECTOR NOTE FOR TYPICAL WASHER REQUIREMENTS

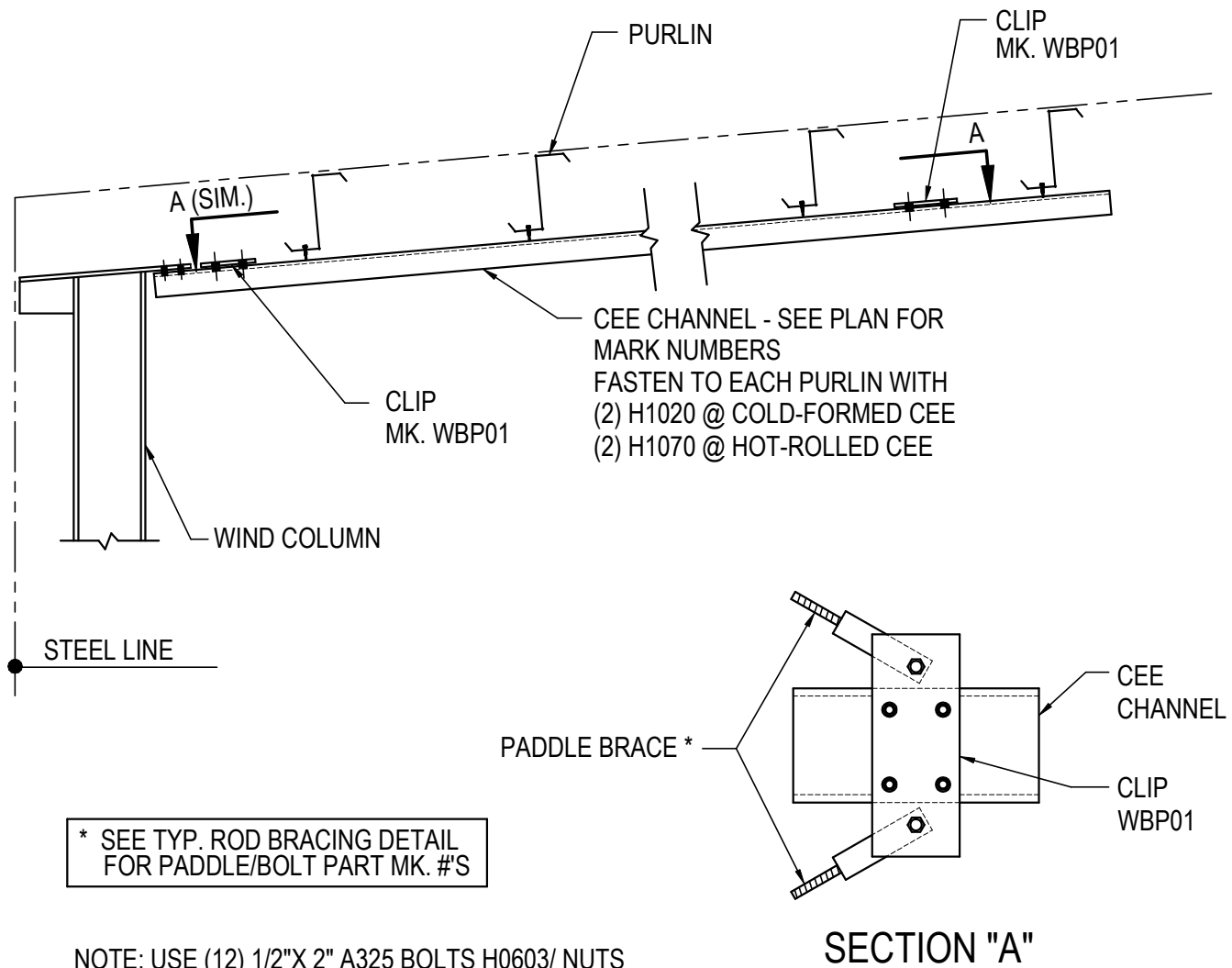
AF0820

Detailer Notes:

- 1) N/A

AF0830 - WIND COLUMN BRACING DETAIL - LOWSIDE WITH PURLINS

[Download the DWG file by clicking here.](#)



* SEE TYP. ROD BRACING DETAIL FOR PADDLE/BOLT PART MK. #'S

NOTE: USE (12) 1/2" X 2" A325 BOLTS H0603/ NUTS H0300 AT CEE CHANNEL

WIND COLUMN BRACING DETAIL - LOWSIDE WITH PURLINS

SEE PLANS & ELEVATIONS FOR MARK NUMBERS AND LOCATIONS
REFERENCE ERECTOR NOTE FOR TYPICAL WASHER REQUIREMENTS

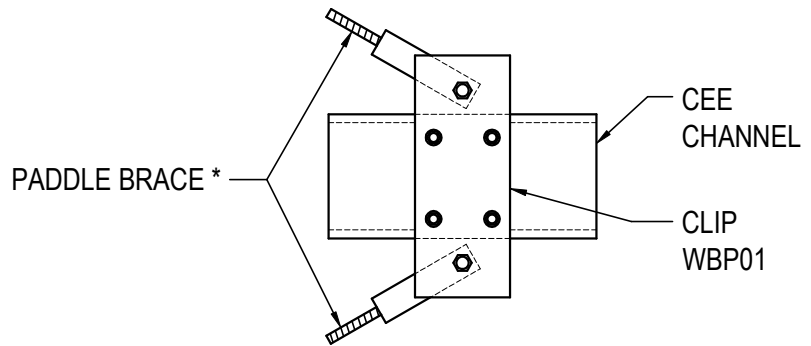
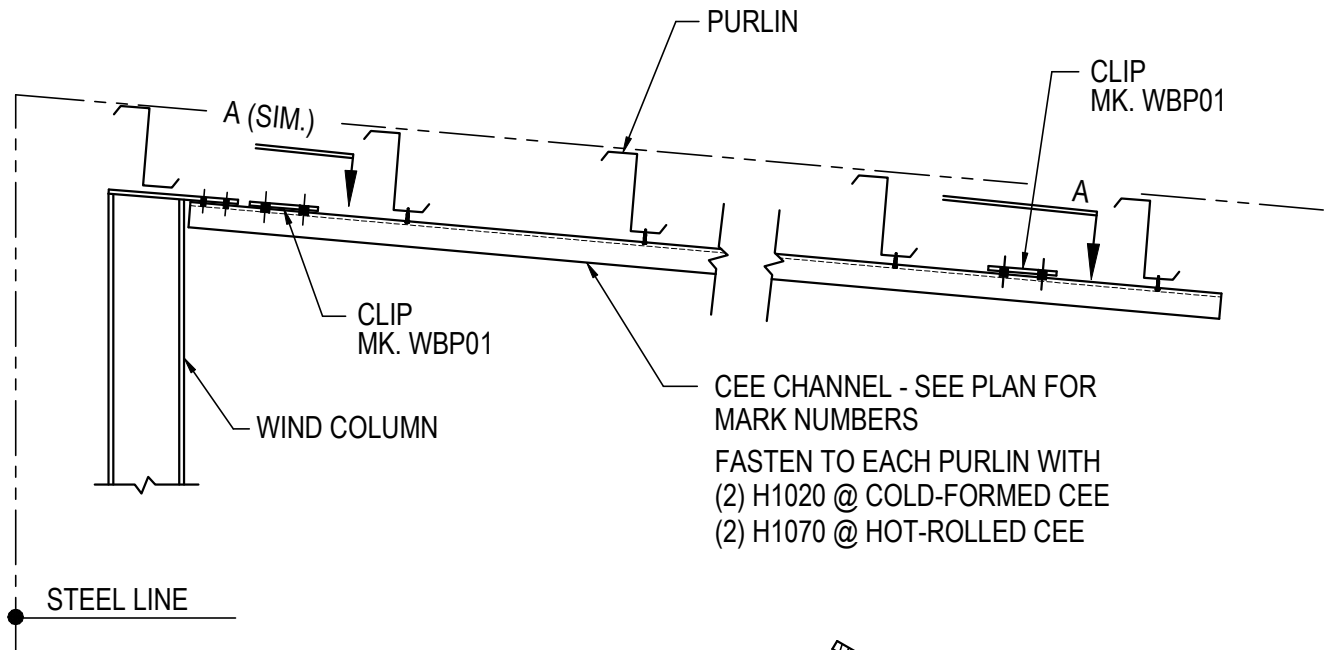
AF0830

Detailer Notes:

- 1) N/A

AF0840 - WIND COLUMN BRACING DETAIL - HIGHSIDE WITH PURLINS

[Download the DWG file by clicking here.](#)



* SEE TYP. ROD BRACING DETAIL FOR PADDLE/BOLT PART MK. #'S

NOTE: USE (12) 1/2" X 2" A325 BOLTS H0603/ NUTS H0300 AT CEE CHANNEL

SECTION "A"

WIND COLUMN BRACING DETAIL - HIGHSIDE WITH PURLINS

SEE PLANS & ELEVATIONS FOR MARK NUMBERS AND LOCATIONS
REFERENCE ERECTOR NOTE FOR TYPICAL WASHER REQUIREMENTS

AF0840

Detailer Notes:

- 1) N/A