

Shelby Williams®

TABLES, BASES AND TOPS

WORKBOOK/PRICE LIST AUGUST 2015



TABLE OF CONTENTS

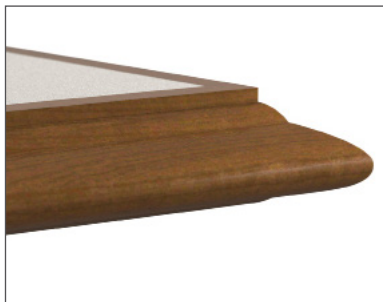
Tables, Bases and Tops	139
The Shelby Williams Advantage	140
Ordering Information	141
Base and Table Finishes.....	142
Base Options	143
Table Top Options	144
Table Top Edge Profiles	145
Tables	148
Stand up Tables.....	174
Occasional Tables	181
Community Tables	185
Folding Banquet Tables.....	188



Solid Cast Iron Base Construction



Steel Bases are Fully Welded and Suitable for Use with Heavy Table Tops



Mortise and Tenon Wood Edges



Conversion Varnish Finish

The Shelby Williams Advantage

CAST IRON BASES: DURABLE AND ENVIRONMENTALLY SOUND

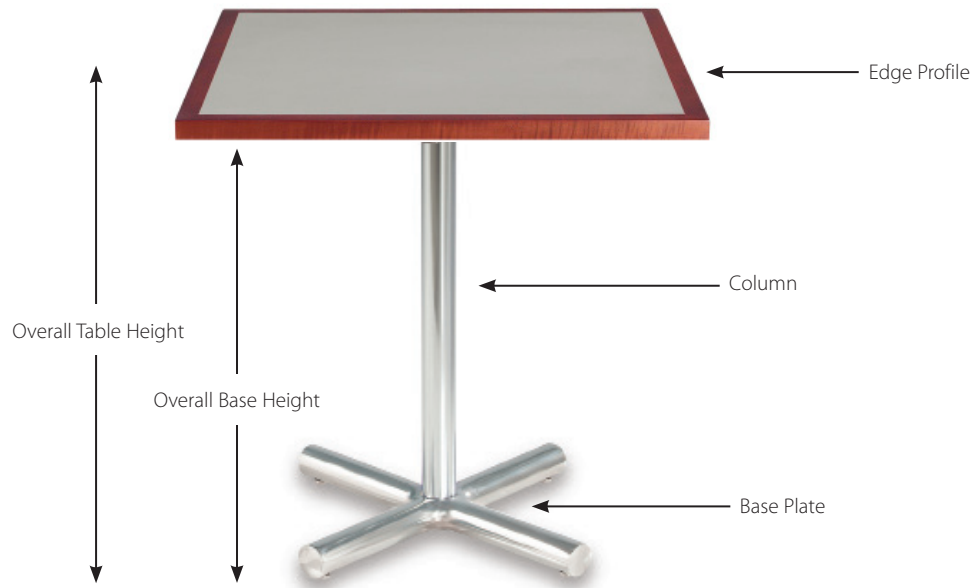
- Made from 98% recycled grey iron.
- Solid cast iron (not hollow), makes the base plates dent proof.
- Multiple glide options designed to meet all flooring requirements.
- Bases are drilled and tapped for glides. We do not use glide inserts which can easily break.
- All steel bases offer fully welded construction; perfect for use in high abuse areas or for extra heavy table tops such as stone.

BASE FINISHES: STRONG, SAFE, AND BEAUTIFUL

- Environmentally responsible, blended epoxy and polyester based Tufcote™.
- Unique phosphate washing system allows Tufcote™ to permanently adhere to base withstanding years of use.
- Heavy nickel undercoat is used before the plating process. This important step creates our high-quality finish..

TABLE TOPS: CRAFTSMANSHIP AND DESIGN

- 45lb high-density recycled engineered core provides durability.
- Use of phenolic backing sheet prevents delamination, warping, and surface deflection.
- Mortise and tenon wood edges are durable, while minimizing dirt grabbing gaps.
- High quality finish, consisting of one sealer and two conversion varnish top coats, creates a beautiful and durable matte finish.
- Turn your vision into reality™. We are able to manufacture any size or shape table with multiple non-standard material options



HOW TO ORDER

1. Specify Quantity

2. Complete Tables -

Select Base Plus Table Top to equal Model Number

B78 series table base with VBN edge
B78 plus table top number = **B78-VBN**

3. Select Table Top Shape and Size

- Standard shapes and sizes are included in each pricing grid
- Use the next largest table price for intermediate table sizes
- Find your starting table price by selecting your edge profile group and your table shape and size.
- The recommended table base size is automatically shipped with your table.
- Some larger table sizes require two or three bases, indicated by +. Larger and heavier tables may require a 15" cast iron spider, indicated by S and included in price.

4. Select Metal Base Finish

- Priced standard in Black Wrinkle
- See available Metal Finishes
- Specify Polished or Unpolished Casting
- See available Wood Finishes
- Custom finishes also available, call for quote.

5. Select Table Top Material

- All prices are Grade 1 Laminate. Optional laminate grades available, call for pricing
- Custom wood finishes also available, call for pricing.
- Veneer inlays are standard as long grain maple. See next page for pricing.
- Long grain oak available. See next page for pricing. Order must specify.

6. Select Edge, Color, or Finish and Species

- Wood Edge - Select wood finish and species.
- Maple species is standard.
- Oak is optional at same price and must be specified on order.
- Other wood species are available. Please call for quote.
- Custom finishes also available.
- Vinyl, Urethane, PVC - Select Color Number and Name.
- See available Edge Colors on next page and inside back cover.

7. Specify Options

- Specify Base Options
- Specify Table Top Options

8. F.O.B. Factory

- Shipped unassembled
- Welded bases shipped setup.

8. Small Order Charge

Orders with a combined Net price under \$1,000 will be subject to a Special Handling Charge of \$125 Net. One charge per order.

EXTENDED WARRANTY

All cast iron table bases carry a 10 year warranty against structural defects in material and workmanship under normal use and service. Cast iron table bases are not recommended for outdoor use. Such use will void applicable warranties. These terms are in addition to the Standard Warranty are available on www.shelbywilliams.com

METAL BASE FINISHES

GRD 1 Black Wrinkle R100

Tufcote™ Colors	Unpolished	Polished
	GRD 2	GRD 3
Almond	CP010S	CP010S
Antique Silvervein	V010	N/A
Architectural Bronze		AB-2
Black Hammertone	H035	N/A
Bronze Metallic		T-58
Bronzestone		CP410
Brown Wrinkle	R200	N/A
Coppervein	T-3	N/A
Fog	CP012S*	CP012S*
Gloss Black	CP011GS*	CP011GS*
Gloss Brown	CP002S	CP002S
Gold Brown Hammertone	T-57	N/A
Gold Dust	T-7	T-7
Goldtone	E-1	E-1
Goldvein	T-1	N/A
Graphite	CP042S	CP042S
Grey Iron†	N351	N/A
Matte Black	CP001MS	CP001MS
Olympic Bronze	T-9	T-9
Sepia Hammertone	H032	N/A
Seville Mocha	E-3	E-3
Silver Hammertone†	H033	N/A
Silvertone		E-2
Statuary†		CP472
Storm	CP023S	CP023S
Sungold	T-55	T-55
White	CP020S	CP020S

Designer Plated Finishes

Polished Chrome

GRD 4

P-3

Designer Plated Finishes

Satin Chrome

GRD 5

P-4

Note: Recessed areas in bases are not polished.

Note: Designer Finishes are not recommended for outdoor use.

***Note:** UV inhibitors may be applied to select Tufcote™ colors for outdoor use. Specify on order.

Contact Sales or Customer Service for pricing.

† Nonstandard Finish, call for quote.

See Metal Base Finishes on inside back cover

WOOD BASE AND TABLE FINISHES

WBF Wood Finishes

Natural	WBF110
Golden	WBF112
Medium Oak	WBF122
Chestnut	WBF124
Medium Brown Mahogany	WBF126
Dark Walnut	WBF128
Light Cherry	WBF131
Amber Cherry	WBF134
Royal Mahogany	WBF136
Black	WBF154

Note: Wood finishes will vary due to inconsistencies in lumber and moisture; therefore we assume no responsibility for matches to exact tones. When matching to laminate patterns containing large variations in color, stain will be matched with harmonizing tone

LAMINATE TABLE FINISHES

Listed below are our most popular laminates, which are available at standard pricing and lead times.

Formica

Solid Color Portfolio (Matte Finish)
Patterns
Formations Collection
Woodgrains

If you would like to see an expanded offering, please visit Formica's web site at formica.com. You may also call Formica at **1-800-FORMICA** for samples.

Should you require additional options, see selections at nevamar.com and wilsonartcontract.com. When you have made your selections, contact sales or customer service for pricing and lead time assistance. If the pricing or lead times are not to your satisfaction, we will be happy to help you reselect.

If your project requires something more unique, we can provide laminate from any manufacturer, including custom laminates. Please contact sales or customer service for assistance with pricing, lead times, and minimum order requirements.

CUSTOM FINISHES

Custom paint, metal, wood, laminate, fiberglass, or acrylic finishes are always welcome. Shelby Williams has the unique ability to custom tailor our products to fit your needs. Our manufacturing process is perfectly suited for custom finishes. Upcharges and additional lead time may apply. Please call 800-873-3252 for details.

GRANITE TABLE COLORS

Standard Colors

Absolute Black
Venetian Gold
Tropic Brown
Uba Tuba

Note: Additional sizes available, call for quote.

SOLID SURFACE

Standard Colors

Abalone	Mojave
Aurora	Moss
Bisque	Platinum
Cameo White	Sand
Canyon	Sandstone
Flint	Sarah
Glacier White	Savannah
Linen	Silt
Maui	Vanilla

Note: Additional sizes and colors available, call for quote.

Quartz Table Top Colors

Bianco River
Gedatsu
Kensho
Tao
Unsui
Zeus Extreme

Krystal Cast Acrylic

Antique Parchment
Dill Pickle
Fruit Punch
Sheer Romance
Super White
Thundercloud

EDGE COLORS

White	949
Almond	10
Dusk	P3
Bark	41
Brown	2
Graphite	42
Cordovan	4
Navy	14
Silver	50
Light Grey	12
Dark Grey	23
Black	1

Note: Not all edge series are available in every color. See Finishes, Edge Colors or Products, Table Tops on shelbywilliams.com for details.

Column Finishes Different from Base Plate

	GRD1	GRD2	GRD3	GRD4	GRD5
ADD	N/A	\$13	\$13	\$34	\$59

Specify on order.

Base Setup

Catalog #	Description	Price
SU	1 Base per Carton	\$26

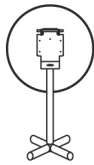
Specify on order.

Column Height Per Base

Catalog #	Description	Add
STU	Stand Up Height (Up to 40.75")	\$45
SF	Stand Up Height with Footring	\$301
W	Wheelchair Height (30")	\$46
C	Cocktail Height (18")	\$18

Only available for steel tube columns.

Specify overall height of base (to top of spider) on order.



Flip Top Mechanism

Catalog #	Description	Add
FTD3	Single Column Flip Top Mechanism	\$179

Please specify table model number and flip top mechanism.
Single column is removable.

Construction: 12 ga. Steel. Twin spring loaded lock down devices.
Available installed only and must be purchased with Falcon tables.

Not available on J11, B55, B57, B53, PL Pin legs, Adjustable Height bases.

Not available on tops larger than 48"R.

Not available on bases with casters.

Not available with butcher block, solid surface, or granite tops.

Adjustable Height Base

Catalog #	Description	Add
NLU-18	For 18" wide top	\$385
NLU-24	For 24" wide top	\$385
NLU-30	For 30" wide top	\$385
NLU-36	For 36" wide top	\$385
NLU-42	For 42" wide top	\$385

Finish: Black Wrinkle R100

Available on 3" steel column, cast iron bases only. Not available on tables with end bases or more than one column. 12" vertical range. Not available on:

B80	B94	B55
B81	B95	B57
B93	B96	Pin Legs
B62	B61	
B78	J11	
B99	B53	



Glides

Cat. #	Description	Upgrd.	Repl.
MPT1	Molded Plastic (all surface)	\$1 ea.	\$2 ea.
RCT2	Metal Base Rubber Cushion (carpet)	\$2 ea.	\$4 ea.
SLG4	Super Leveler (add 5/8" to height) Spring Loaded (all surface)	\$4 ea.	\$10 ea.

Casters

Catalog #	Description	Add
CST22	2 Swivel/ 2 Brake	\$202 set

Available on 200 and 2400 series only.

Angle Iron Bracket

Catalog #	Description	Add
ANGLBRKT	1.5" x 1.5" x 20" x .12"	\$24

Umbrella Base

Catalog #	Description	Add
UMB1	Base conversion to accept umbrella pole	\$158
UmbrellaHole	Specify hole size	\$42 ea.

Can be added to any 3" or 4" steel tube column on a disc base.
3" column can hold up to 1.5" pole. 4" column can hold up to 1.75" pole. Specify pole size.

Handicap Access



Catalog #	Description	Add
HL1	1" Diameter	\$46

REPLACEMENT PARTS

Hardware

Catalog #	Description	Price
7/16" x 27"	Bolt with Nut and Lock Washer	\$10
3"	Fiber Centering Ring	\$2
4"	Fiber Centering Ring	\$4
Table Top Screws	Pan head phillips sheet metal (set of 8)	\$3

Top screws are supplied only when top and bases are ordered together

Cast Iron Spiders

Catalog #	Description	Price
CISP12	Spider with 12" spread	\$31
CISP15	Spider with 15" spread	\$51
CISP17	Spider with 17" spread	\$62
CISP24	Spider with 24" spread	\$97

Replacement Columns

Catalog #	Diam	GRD1	GRD2	GRD3	GRD4	GRD5
2" Column	2"	\$37	\$40	\$40	\$45	\$67
3" Column	3"	\$37	\$40	\$40	\$45	\$67
4" Column	4"	\$49	\$56	\$57	\$62	\$70

Includes bolt assembly, steel columns only. Specify base series.

T Mold



Feature	Benefit
T Mold Edge	Protects the top from incidental damage while being reconfigured or from chairs hitting against top
T Mold Edge	Stretched, pressure fit, and pinned for durability

Urethane



Feature	Benefit
Seamless Construction	Prevents moisture or bacteria from penetrating the edge
Soft Material	Forgiving when bumped against by other furniture items
No Drip Edge	Designed to keep spilled liquids on the top without leaking onto the floor, eliminating slip hazards
Fused Material	Permanently molded into core

Wood



Feature	Benefit
Mortise and Tenon Construction	Insures years of beauty and durability and allows minimum waste
Solid Wood	Insures years of beauty and durability
Conversion Varnish Finish	Low emitting finish that is designed to hold up to the extreme demands of a dining facility
Edge on First Option	Value-priced, highly durable wood edge that is easy to clean

Radius Corner Information

Edge Profiles	STD	Corner Size	Price / Corner
AE VBN VE KPV 41333 44100	Radius	3" Standard	N/A
VFL 41111	Radius	1" Standard	N/A
KPWE VPT	Square	3" Optional	\$6
FE	Square	4" Optional	\$5
16360 16362 16365 17360 17362 17365	Eased Square	3" Optional	\$18
KNPT WE HBWE WEBN CWE SCWE WED HBND WBND OGWE FWE3 WBEWE BEWE VWE	Square	3" Optional	\$89
SWE 40888 1440	Square	N/A	N/A
BNPT	Eased Square	N/A	N/A
Solid surface/granite	Square	3" Optional	Call for quote

Veneer Art

Add \$23 sq ft for Standard Veneer Art

973 Euro Ash	981 Modern Makore
926 Canadian Maple	978 American Walnut
974 Brown Annigre	971 White Ash
913 Honey Annigre	976 Tropical Zebrawood
953 Renaissance Cherry	979 Bubinga
925 American Cherry	982 Architectural Sapele
921 Spanish Mahogany	980 Teak
920 Executive Mahogany	977 Bog Oak

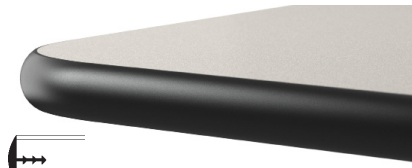
Add \$42 sq ft for Bamboo

- 972 Natural Bamboo
- 975 Amber Bamboo
- Veneer Art provides the beauty of real wood veneer with the durability of laminate.

Table Top Features and Options

- We offer several styles in solid wood, butcher block, solid surface, and 21 ply layered beech plywood.
- Surface materials are standard with Grade 1 plastic laminate, but optional laminate grade veneer, Veneer Art, or Linoleum are also available.
- Table tops produced to .25" tolerance. If an exact size is required, order must specify and upcharge may apply
- Standard wood edge is Maple. Oak is optional at the same price. Other species are available upon request, call for pricing.
- Pre drilled tops are standard. A pattern of punches is located under the top which are used as screw locator for the base.
- Multiple laminate inlays can be ordered on any laminate top. All combinations of laminates specified must be from the same manufacturer to insure consistent thickness. Call for pricing.
- Veneer inlays are standard as long grain maple, add \$35 per sq ft.
- Long grain oak available, add \$35 per square foot, order must specify.
- Additional veneer patterns are available, which include: diamond box, reverse diamond box, and sunburst. Additional species are also available. Call for pricing.
- Solid surface and Granite tops are available in optional sizes and colors or as special quote.
- Veneer Art provides the richness of real wood veneer with the durability of laminate.

Group A



VBN 1.25" solid vinyl T mold bumper edge. High pressure laminate top standard with 3" radius corners. Available in a variety of colors



VFL 1.25" solid vinyl flat T mold edge. High pressure laminate top standard with 1" radius corners. Available in a variety of colors



VE 1.25" fluted vinyl edge. High pressure laminate top standard with 3" radius corners. Available in a variety of colors



VPT 1.25" plastic T mold edge. Polyvinyl foam covered top suitable for tablecloth applications.



FE 1.25" self edge. High pressure laminate top/edge.

1000 1" self edge. High pressure laminate top/edge.



AE 1.25" fluted aluminum edge. High pressure laminate top standard with 3" radius corners

Group A - continued



1440 .125 flat PVC edge band. High pressure laminate. Radius corners not available

1405 1" flat PVC edge band. High pressure laminate. Radius corners not available

Group B



BNPT 1.25" x 1" wood edge on first construction high pressure laminate top surface



SWE 1.25" x .25" wood banded edge high pressure laminate or veneer top surface



KNPT 1.25" x 1" reverse knife wood edge on first construction with Veneer Art top surface

24090 1.25" x 1" reverse knife wood edge on first construction, high pressure laminate top surface.

Group C



KPV 1.25" 21-ply plywood edge .5" vinyl T mold bumper, black high pressure laminate top surface 3" standard radius corners

Group C - continued



KPWE 1.25" 21-ply plywood reverse knife edge high pressure laminate top surface



WE 1.25" x 1.25" square wood edge high pressure laminate, veneer, or Veneer Art top surface



HBWE 1.25" x 1.25" half bullnose wood edge high pressure laminate, veneer, or Veneer Art top surface



WEBN 1.25" x 1.25" full bullnose wood edge high pressure laminate, veneer, or Veneer Art top surface



SCWE 1.25" x 1.25" sculptured wood edge high pressure laminate, veneer, or Veneer Art top surface

Group C - continued



BEWE 1.25" x 1.25" beveled wood edge high pressure laminate, veneer, or Veneer Art top surface

Group D



CWE 1.25" x 1.25" contoured wood edge high pressure laminate, veneer, or Veneer Art top surface



WED 1.75" x 2" squared wood edge high pressure laminate, veneer, or Veneer Art top surface



HBND 1.75" x 2" half bullnose wood edge high pressure laminate, veneer, or Veneer Art top surface



WBND 1.75" X 2" full bullnose wood edge high pressure laminate, veneer, or Veneer Art top surface

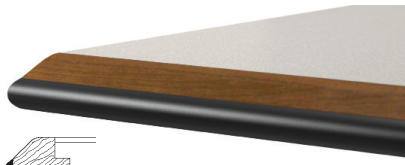
Group D - continued



OGWE 1.25" x 1.5" ogee wood edge high pressure laminate, veneer, or Veneer Art top surface



FWE3 1.75" x .75" fluted wood edge high pressure laminate, veneer, or Veneer Art top surface



VWE 1.25" x 1.25" beveled wood edge ½" vinyl T mold edge, black high pressure laminate, veneer, or Veneer Art top surface



WBEWE 1.25" x 2" beveled wood edge, high pressure laminate, veneer, or Veneer Art top surface

Group E



16360/17360 1.5" eased edge solid butcher block

16460/17460 1.25" eased edge random plank

16360/16460 Ash species

17360/17460 Maple species

Group E - continued



16362/17362 1.5" half bullnose edge solid butcher block

16462/17462 1.25" eased edge random plank

16362/16462 Ash species

17362/17462 Maple species



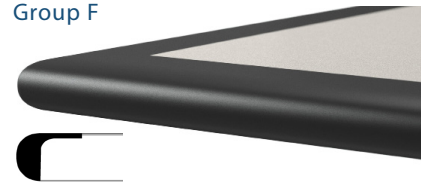
16365/17365 1.5" full bullnose edge solid butcher block

16465/17465 1.25" eased edge random plank

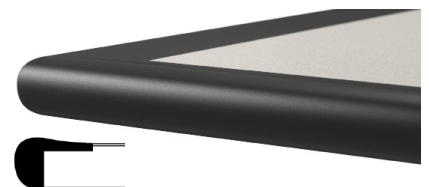
16365/16465 Ash species

17365/17465 Maple species

Group F



41111 1.25" x 1.75" molded urethane fused edge full bullnose edge high pressure laminate top surface several colors available, see finishes



41333 1.25" x 1.75" molded urethane fused edge full bullnose edge with no-drip feature high pressure laminate top surface several colors available, see finishes



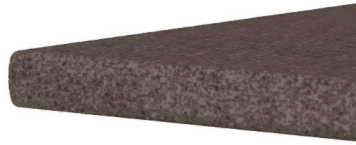
41120 1.25" x .375" molded urethane fused edge, reverse knife, with laminated surface several colors available, see finishes

Group G



40311 1.5" square drop edge, solid surface. Shipped crated.

Group I



40711 1.18" (3 cm) thick square/eased edge quartz. Polished edges. Shipped crated. Appropriate Falcon base series for heavy tops: J11, J91, 1400, 1600, 4900, 69C5

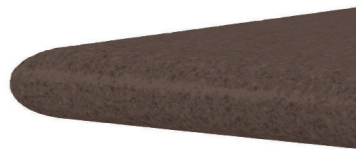
Group J



40620 1.5" reverse knife edge, KrystalCast Acrylic (.25" acrylic/1.25" subtop). Exposed subtop edge colors available in black or white. Shipped crated.



40322 1.5" bullnose drop edge, solid surface. Shipped crated.



40722 1.18" (3 cm) thick bullnose quartz. Polished edges. Shipped crated. Appropriate Falcon base series for heavy tops: J11, J91, 1400, 1600, 4900, 69C5

Group K



16760 1.25" eased edge solid butcher block, Distressed Wood Plank (Ash species)



40333 1.5" reverse knife drop edge, solid surface. Shipped crated.



40733 1.18" (3 cm) thick reverse knife edge, quartz. Polished edges. Shipped crated. Appropriate Shelby Williams base series for heavy tops: J11, J91, 1400, 1600, 4900, 69C5



Shown with **WEBN** Top
29.75" Overall Table Height
30" Overall Table Height,
 Group E Only

Group A

Group B

Group C

Group D

Group E

Ash Maple

Group F

Limited sizes available. See A,B,C next to price.

PC = Polished Chrome SC = Satin Chrome

Top Size (Inches)	Base Size (Inches)	List Price		Aprx WT		List Price		Aprx WT		List Price		Aprx WT		List Price		Aprx WT		Metal Upcharge Grades 2/3/PC/SC			
30 RD	22x22	377	47	476	52	792	52	978	52	1,021	71	421 ^A	53	76	144	241	299				
36 RD	30x30	407	64	689	73	883	73	1,139	73	1,190	100	516 ^{A,B,C}	73	79	168	238	316				
42 RD	30x30 s	482	79	779	90	1,018	90	1,267	90	1,322	127	598 ^{A,B,C}	91	79	168	238	316				
48 RD	36x36	592	114	890	130	1,140	130	1,412	130	1,653	178	687 ^{A,B,C}	130	82	195	334	376				
60 RD	36x36	832	155	1,287	180	1,620	180	1,983	180	2,416	255	921 ^A	180	82	195	334	376				
24 SQ	22x22	342	36	377	40	452	40	537	40	649	52	414 ^{A,C}	40	76	144	241	299				
30 SQ	22x22	366	46	426	52	523	52	627	52	732	71	443 ^{A,C}	53	76	144	241	299				
36 SQ	30x30	395	64	504	73	631	73	734	73	955	100	516 ^{A,B,C}	78	79	168	238	316				
42 SQ	36x36	521	98	623	109	807	109	992	109	1,299	146	639 ^{A,B,C}	110	82	195	334	376				
48 SQ	36x36	575	114	663	130	877	130	1,085	130	1,597	178	712 ^{A,B}	130	82	195	334	376				
24x30	22x22	379	41	401	46	489	46	583	46	668	61	416 ^{A,C}	46	76	144	241	299				
24x42	22x30	408	54	440	61	582	61	659	61	809	82	447 ^A	61	79	161	228	305				
24x48	22x30	424	58	474	66	622	66	749	66	879	90	455 ^A	66	79	161	228	305				
24x60	5x22 +	506	75	600	85	898	85	961	85	1,094	115	N/A	N/A	91	198	288	380				
30x42	22x30	406	62	467	70	606	70	728	70	923	96	458 ^A	71	79	161	228	305				
30x48	5x22 +	497	75	574	85	729	85	863	85	1,082	115	537 ^{A,C}	85	91	198	288	380				
30x60	5x22 +	525	87	640	99	916	99	1,120	99	1,300	136	572 ^A	99	91	198	288	380				
30x72	5x22 + s	650	98	779	113	1,054	113	1,282	113	1,781	158	661 ^A	113	91	198	288	380				
36x48	5x22 +	541	84	729	96	786	96	972	96	1,275	132	N/A	N/A	91	198	288	380				
36x60	22x30 +	678	112	909	126	985	126	1,215	126	1,595	172	N/A	N/A	155	323	456	611				
36x72	22x30 + s	795	125	1,074	143	1,163	143	1,439	143	1,895	197	N/A	N/A	155	323	456	611				

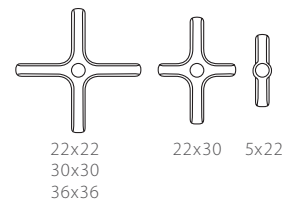
* = Denotes available as Drop Leaf top + = 2 bases per top included s = 15" cast iron spider included **A** = 41111 **B** = 41333 **C** = 41120

DROP LEAF

Top Size (Inches)	Base Size (Inches)	List Price		Aprx WT		List Price		Aprx WT		List Price		Aprx WT		Metal Upcharge Grades 2/3/PC/SC							
36 SQ - 51 RD	36x36	1,075	138	2,243	158	2,771	158	3,180	158	3,144	218	N/A	N/A	82	195	334	376				
42 SQ - 60 RD	36x36	1,231	161	2,510	186	2,887	186	3,326	186	4,221	261	N/A	N/A	82	195	334	376				

HOW TO BUILD YOUR TABLE MODEL NUMBER:

B10 series table base with WEBN edge profile
 B10 plus edge profile number = **B10-WEBN**



NOTES:

- Pricing is for complete table.
- Use the next largest table price for intermediate table sizes.
- All prices are list, FOB factory.
- All prices are Grade 1 Laminate, Black Wrinkle, Maple species, standard wood finishes, and shipped unassembled.
- Maple species is standard. Oak species available for the same price (specify on order). Additional species also available, call for pricing.
- See Edge details in the Tables introduction section *Tables- Edge Profiles*.



Shown with **BNPT** Top
 29.75" Overall Table Height
 30" Overall Table Height,
 Group E Only

Group A

Group B

Group C

Group D

Group E

Butcher Block/
Random Plank

Ash Maple

Group F

Limited sizes available. See A,B,C next to price.

PC = Polished Chrome SC = Satin Chrome

Top Size (Inches)	Base Size (Inches)	List Price	Apprx WT	List Price	Apprx WT	List Price	Apprx WT	List Price	Apprx WT	List Price	Apprx WT	List Price	Apprx WT	Metal Upcharge Grades 2/3/PC/SC			
30 RD	24x24	395	53	493	58	809	58	993	58	1,037	77	437 ^A	59	8	58	131	153
36 RD	32x32	433	74	716	83	908	83	1,164	83	1,216	110	541 ^{A,B,C}	83	10	70	135	159
42 RD	32x32	491	89	788	100	1,028	100	1,276	100	1,331	137	608 ^{A,B,C}	101	10	70	135	159
48 RD	32x32	547	105	844	121	1,096	121	1,366	121	1,607	169	642 ^{A,B,C}	121	10	70	135	159
60 RD	40x40	926	169	1,381	194	1,712	194	2,078	194	2,510	269	1,015 ^A	194	24	88	208	239
24 SQ	18x18	344	36	378	40	453	40	539	40	650	52	414 ^{A,C}	40	4	24	96	115
30 SQ	24x24	380	52	442	58	539	58	643	58	748	77	460 ^{A,C}	59	8	58	131	153
36 SQ	32x32	419	74	530	83	659	83	762	83	982	110	541 ^{A,B,C}	88	10	70	135	159
42 SQ	32x32	475	89	577	100	762	100	947	100	1,253	137	592 ^{A,B,C}	101	10	70	135	159
48 SQ	32x32	529	105	616	121	831	121	1,040	121	1,552	169	668 ^{A,B}	121	10	70	135	159
24x30	24x24	398	47	416	52	505	52	600	52	685	67	432 ^{A,C}	52	8	58	131	153
24x42	22x30	431	62	463	69	606	69	680	69	832	90	468 ^A	69	8	67	126	152
24x48	22x30	447	66	495	74	644	74	773	74	902	98	477 ^A	74	8	67	126	152
24x60	3x24 +	534	83	628	93	927	93	991	93	1,121	123	N/A	N/A	12	52	142	177
30x42	22x30	433	70	495	78	632	78	755	78	951	104	486 ^A	79	8	67	126	152
30x48	3x24+	526	83	604	93	759	93	891	93	1,111	123	565 ^{A,C}	93	12	52	142	177
30x60	3x24 +	554	95	668	107	944	107	1,149	107	1,328	144	600 ^A	107	12	52	142	177
30x72	3x24 +	634	106	763	121	1,038	121	1,267	121	1,766	166	646 ^A	121	12	52	142	177
36x48	32x32	497	87	685	99	743	99	928	99	1,232	135	N/A	N/A	10	70	135	159
36x60	3x24 +	642	106	874	120	948	120	1,179	120	1,559	166	N/A	N/A	12	52	142	177
36x72	3x24 +	727	119	1,005	137	1,096	137	1,369	137	1,827	191	N/A	N/A	12	52	142	177

* = Denotes available as Drop Leaf top + = 2 bases per top included

A = 41111 B = 41333 C = 41120

DROP LEAF

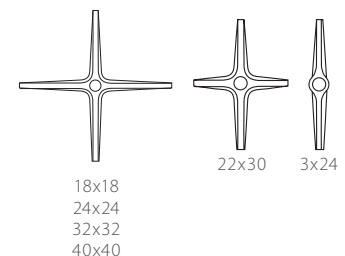
Top Size (Inches)	Base Size (Inches)	List Price	Apprx WT	List Price	Apprx WT	List Price	Apprx WT	List Price	Apprx WT	List Price	Apprx WT	List Price	Apprx WT	Metal Upcharge Grades 2/3/PC/SC			
36 SQ - 51 RD	40x40	1,167	152	2,337	172	2,864	172	3,273	172	3,238	232	N/A	N/A	24	88	208	239
42 SQ - 60 RD	40x40	1,324	175	2,605	200	2,981	200	3,417	200	4,315	275	N/A	N/A	24	88	208	239

HOW TO BUILD YOUR TABLE MODEL NUMBER:

B12 series table base with BNPT edge profile
 B12 plus edge profile number = **B12-BNPT**

NOTES:

- Pricing is for complete table.
- Use the next largest table price for intermediate table sizes.
- All prices are list, FOB factory.
- All prices are Grade 1 Laminate, Black Wrinkle, Maple species, standard wood finishes, and shipped unassembled.
- Maple species is standard. Oak species available for the same price (specify on order). Additional species also available, call for pricing.
- See Edge details in the Tables introduction section *Tables- Edge Profiles*.





Shown with 41111 Top
29.75" Overall Table Height
30" Overall Table Height,
Group E Only

Group A

Group B

Group C

Group D

Group E

Group F

Limited sizes available. See A,B,C next to price.

PC = Polished Chrome SC = Satin Chrome

Top Size (Inches)	Base Size (Inches)	List Price	Apprx WT	List Price	Apprx WT	List Price	Apprx WT	List Price	Apprx WT	List Price	Apprx WT	List Price	Apprx WT	Metal Upcharge Grades 2/3/PC/SC			
30 RD	18 RD	428	61	528	66	844	66	1,027	66	1,072	85	472 ^A	67	22	98	208	272
36 RD	22 RD	489	88	772	97	965	97	1,220	97	1,271	124	597 ^{A,B,C}	97	34	110	247	262
42 RD	30 RD	694	138	991	149	1,232	149	1,479	149	1,534	186	812 ^{A,B,C}	150	39	152	322	377
48 RD	30 RD	750	154	1,047	170	1,298	170	1,569	170	1,810	218	844 ^{A,B,C}	170	39	152	322	377
60 RD	30 RD	989	195	1,445	220	1,776	220	2,141	220	2,574	295	1,078 ^A	220	39	152	322	377
24 SQ	18 RD	394	50	428	54	502	54	588	54	700	66	464 ^{A,C}	54	22	98	208	272
30 SQ	18 RD	415	60	476	66	573	66	678	66	783	85	494 ^{A,C}	67	22	98	208	272
36 SQ	22 RD	484	88	592	97	721	97	824	97	1,044	124	605 ^{A,B,C}	102	34	110	247	262
42 SQ	30 RD	678	138	781	149	964	149	1,150	149	1,456	186	795 ^{A,B,C}	150	39	152	322	377
48 SQ	30 RD	732	154	820	170	1,034	170	1,243	170	1,756	218	870 ^{A,B}	170	39	152	322	377
24x30	18 RD	432	55	452	60	540	60	633	60	720	75	466 ^{A,C}	60	22	98	208	272
24x42	22 RD	502	79	534	86	677	86	751	86	903	107	541 ^A	86	34	110	247	262
24x48	22 RD s	534	83	584	91	732	91	860	91	991	115	565 ^A	91	34	110	247	262
24x60	18 RD +	644	109	737	119	1,036	119	1,100	119	1,231	149	N/A	N/A	43	196	414	543
30x42	22 RD	505	87	569	95	704	95	828	95	1,023	121	559 ^A	96	34	110	247	262
30x48	18 RD +	634	109	712	119	868	119	1,000	119	1,220	149	674 ^{A,C}	119	43	196	414	543
30x60	18 RD +	663	121	778	133	1,053	133	1,258	133	1,438	170	710 ^A	133	43	196	414	543
30x72	18 RD +	745	132	871	147	1,148	147	1,375	147	1,876	192	755 ^A	147	43	196	414	543
36x48	30 RD	700	136	888	148	946	148	1,131	148	1,434	184	N/A	N/A	39	152	322	377
36x60	18 RD +	765	132	997	146	1,073	146	1,302	146	1,682	192	N/A	N/A	43	196	414	543
36x72	22 RD + s	952	175	1,230	193	1,320	193	1,595	193	2,052	247	N/A	N/A	67	220	492	525

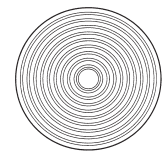
* = Denotes available as Drop Leaf top + = 2 bases per top included s = 15" cast iron spider included A = 41111 B = 41333 C = 41120

DROP LEAF

Top Size (Inches)	Base Size (Inches)	List Price	Apprx WT	List Price	Apprx WT	List Price	Apprx WT	List Price	Apprx WT	List Price	Apprx WT	List Price	Apprx WT	Metal Upcharge Grades 2/3/PC/SC			
36 SQ - 51 RD	30 RD	1,232	178	2,401	198	2,927	198	3,336	198	3,302	258	N/A	N/A	39	152	322	377
42 SQ - 60 RD	30 RD	1,389	201	2,667	226	3,044	226	3,483	226	4,378	301	N/A	N/A	39	152	322	377

HOW TO BUILD YOUR TABLE MODEL NUMBER:

B15 series table base with 41111 edge profile
B15 plus edge profile number = **B15-41111**



18 RD
22 RD
30 RD

NOTES:

- Pricing is for complete table.
- Use the next largest table price for intermediate table sizes.
- All prices are list, FOB factory.
- All prices are Grade 1 Laminate, Black Wrinkle, Maple species, standard wood finishes, and shipped unassembled.
- Maple species is standard. Oak species available for the same price (specify on order). Additional species also available, call for pricing.
- See Edge details in the Tables introduction section *Tables- Edge Profiles*.



Shown with **VBN** Top
29.75" Overall Table Height
30" Overall Table Height, Group E Only

Group A

Group B

Group C

Group D

Group E

Butcher Block/
Random Plank

Ash Maple

Group F

Limited sizes available. See A,B,C next to price.

PC = Polished Chrome SC = Satin Chrome

Top Size (Inches)	Base Size (Inches)	List Price	Apprx WT	List Price	Apprx WT	List Price	Apprx WT	List Price	Apprx WT	List Price	Apprx WT	List Price	Apprx WT	Metal Upcharge Grades 2/3/PC/SC			
30 RD	18 RD	411	57	510	62	827	62	1,011	62	1,054	81	455 A	63	13	103	208	272
36 RD	22 RD	461	82	743	91	937	91	1,192	91	1,243	118	570 A,B,C	91	21	111	247	262
42 RD	30 RD	685	133	982	144	1,221	144	1,470	144	1,525	181	800 A,B,C	145	22	218	322	377
48 RD	30 RD	741	149	1,037	165	1,287	165	1,560	165	1,800	213	834 A,B,C	165	22	218	322	377
60 RD	30 RD	980	190	1,434	215	1,766	215	2,132	215	2,564	290	1,068 A	215	22	218	322	377
24 SQ	18 RD	375	46	411	50	485	50	572	50	684	62	447 A,C	50	13	103	208	272
30 SQ	18 RD	399	56	459	62	556	62	661	62	766	81	478 A,C	63	13	103	208	272
36 SQ	22 RD	455	82	565	91	692	91	795	91	1,017	118	576 A,B,C	96	21	111	247	262
42 SQ	30 RD	668	133	771	144	954	144	1,139	144	1,446	181	785 A,B,C	145	22	218	322	377
48 SQ	30 RD	723	149	809	165	1,024	165	1,234	165	1,744	213	859 A,B	165	22	218	322	377
24x30	18 RD	414	51	434	56	523	56	616	56	701	71	449 A,C	56	13	103	208	272
24x42	22 RD	474	73	506	80	648	80	724	80	876	101	513 A	80	21	111	247	262
24x48	18 RD +	589	92	641	100	788	100	917	100	1,046	124	620 A	100	29	203	385	543
24x60	18 RD +	610	101	702	111	1,001	111	1,065	111	1,196	141	N/A	N/A	29	203	385	543
30x42	22 RD	476	81	540	89	677	89	800	89	994	115	529 A	90	21	111	247	262
30x48	18 RD +	602	101	678	111	833	111	965	111	1,187	141	640 A,C	111	29	203	385	543
30x60	18 RD +	628	113	743	125	1,018	125	1,223	125	1,403	162	675 A	125	29	203	385	543
30x72	18 RD +	711	124	837	139	1,112	139	1,341	139	1,840	184	722 A	139	29	203	385	543
36x48	30 RD	690	131	877	143	936	143	1,120	143	1,425	179	N/A	N/A	22	218	322	377
36x60	30 RD	775	145	1,007	159	1,081	159	1,311	159	1,690	205	N/A	N/A	22	218	322	377
36x72	22 RD + s	928	163	1,206	181	1,297	181	1,570	181	2,027	235	N/A	N/A	41	222	492	525

* = Denotes available as Drop Leaf top + = 2 bases per top included s = 15" cast iron spider included A = 41111 B = 41333 C = 41120

DROP LEAF

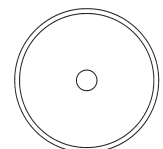
Top Size (Inches)	Base Size (Inches)	List Price	Apprx WT	List Price	Apprx WT	List Price	Apprx WT	List Price	Apprx WT	List Price	Apprx WT	List Price	Apprx WT	Metal Upcharge Grades 2/3/PC/SC			
36 SQ - 51 RD	30 RD	1,221	173	2,390	193	2,918	193	3,327	193	3,292	253	N/A	N/A	22	218	322	377
42 SQ - 60 RD	30 RD	1,378	196	2,658	221	3,035	221	3,472	221	4,369	296	N/A	N/A	22	218	322	377

HOW TO BUILD YOUR TABLE MODEL NUMBER:

B21 series table base with VBN edge profile
 B21 plus edge profile number = **B21-VBN**

NOTES:

- Pricing is for complete table.
- Use the next largest table price for intermediate table sizes.
- All prices are list, FOB factory.
- All prices are Grade 1 Laminate, Black Wrinkle, Maple species, standard wood finishes, and shipped unassembled.
- Maple species is standard. Oak species available for the same price (specify on order). Additional species also available, call for pricing.
- See Edge details in the Tables introduction section *Tables- Edge Profiles*.



18 RD
 22 RD
 30 RD



Shown with **WEBN** Top
29.75" Overall Table Height
30" Overall Table Height,
 Group E Only

Group A

Group B

Group C

Group D

Group E

Group F

Limited sizes available. See A,B,C next to price.

PC = Polished Chrome SC = Satin Chrome

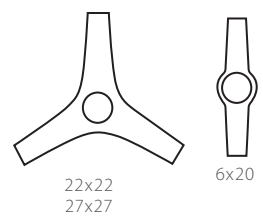
Top Size (Inches)	Base Size (Inches)	List Price	Apprx WT	List Price	Apprx WT	List Price	Apprx WT	List Price	Apprx WT	List Price	Apprx WT	List Price	Apprx WT	Metal Upcharge Grades 2/3/PC/SC			
30 RD	22x22	399	54	498	59	816	59	998	59	1,042	78	442 ^A	60	6	N/A	N/A	N/A
36 RD	27x27	4231	70	712	79	905	79	1,161	79	1,213	106	538 ^{A,B,C}	79	9	N/A	N/A	N/A
42 RD	N/A	N/A	N/A	N/A	N/A	N/A	N/A	N/A	N/A	N/A	N/A	N/A ^{A,B,C}		N/A	N/A	N/A	N/A
48 RD	N/A	N/A	N/A	N/A	N/A	N/A	N/A	N/A	N/A	N/A	N/A	N/A ^{A,B,C}		N/A	N/A	N/A	N/A
60 RD	N/A	N/A	N/A	N/A	N/A	N/A	N/A	N/A	N/A	N/A	N/A	N/A ^A		N/A	N/A	N/A	N/A
24 SQ	22x22	364	43	399	47	473	47	560	47	670	59	434 ^{A,C}	47	6	N/A	N/A	N/A
30 SQ	22x22	386	53	448	59	544	59	648	59	753	78	465 ^{A,C}	60	6	N/A	N/A	N/A
36 SQ	27x27	425	70	535	79	663	79	766	79	987	106	546 ^{A,B,C}	84	9	N/A	N/A	N/A
42 SQ	N/A	N/A	N/A	N/A	N/A	N/A	N/A	N/A	N/A	N/A	N/A	N/A ^{A,B,C}		N/A	N/A	N/A	N/A
48 SQ	N/A	N/A	N/A	N/A	N/A	N/A	N/A	N/A	N/A	N/A	N/A	N/A ^{A,B}		N/A	N/A	N/A	N/A
24x30	22x22	403	48	423	53	510	53	606	53	689	68	437 ^{A,C}	53	6	N/A	N/A	N/A
24x42	6x20 +	473	62	505	69	647	69	723	69	875	90	511 ^A	69	10	N/A	N/A	N/A
24x48	6x20 +	505	66	555	74	702	74	831	74	960	98	536 ^A	74	10	N/A	N/A	N/A
24x60	6x20 +	525	75	618	85	917	85	981	85	1,111	115	N/A	N/A	10	N/A	N/A	N/A
30x42	6x20 +	476	70	539	78	675	78	798	78	993	104	528 ^A	79	10	N/A	N/A	N/A
30x48	6x20 +	516	75	591	85	747	85	880	85	1,101	115	556 ^{A,C}	85	10	N/A	N/A	N/A
30x60	6x20 +	543	87	659	99	934	99	1,139	99	1,317	136	590 ^A	99	10	N/A	N/A	N/A
30x72	6x20 +	625	98	751	113	1,027	113	1,256	113	1,757	158	636 ^A	113	10	N/A	N/A	N/A
36x48	6x20 +	546	84	734	96	791	96	978	96	1,281	132	N/A	N/A	10	N/A	N/A	N/A
36x60	6x20 + s	664	98	896	112	972	112	1,200	112	1,582	158	N/A	N/A	10	N/A	N/A	N/A
36x72	6x20 + s	748	111	1,026	129	1,117	129	1,393	129	1,848	183	N/A	N/A	10	N/A	N/A	N/A

* = Denotes available as Drop Leaf top + = 2 bases per top included s = 15" cast iron spider included **A** = 41111 **B** = 41333 **C** = 41120

DROP LEAF

Top Size (Inches)	Base Size (Inches)	List Price	Apprx WT	List Price	Apprx WT	List Price	Apprx WT	List Price	Apprx WT	List Price	Apprx WT	List Price	Apprx WT	Metal Upcharge Grades 2/3/PC/SC			
36 SQ - 51 RD	N/A	N/A	N/A	N/A	N/A	N/A	N/A	N/A	N/A	N/A	N/A	N/A	N/A	N/A	N/A	N/A	N/A
42 SQ - 60 RD	N/A	N/A	N/A	N/A	N/A	N/A	N/A	N/A	N/A	N/A	N/A	N/A	N/A	N/A	N/A	N/A	N/A

HOW TO BUILD YOUR TABLE MODEL NUMBER:
 B25 series table base with WEBN edge profile
 B25 plus edge profile number = **B25-WEBN**



NOTES:

- Pricing is for complete table.
- Use the next largest table price for intermediate table sizes.
- All prices are list, FOB factory.
- All prices are Grade 1 Laminate, Black Wrinkle, Maple species, standard wood finishes, and shipped unassembled.
- Maple species is standard. Oak species available for the same price (specify on order). Additional species also available, call for pricing.
- See Edge details in the Tables introduction section *Tables- Edge Profiles*.



Shown with 17362 Top
 30.5" Overall Table Height
 30.75" Overall Table Height,
 Group E Only

Group A

Group B

Group C

Group D

Group E

Butcher Block/
Random Plank

Ash Maple

Group F

Limited sizes available. See A,B,C next to price.

PC = Polished Chrome SC = Satin Chrome

Top Size (Inches)	Base Size (Inches)	List Price	Apprx WT	List Price	Apprx WT	List Price	Apprx WT	List Price	Apprx WT	List Price	Apprx WT	List Price	Apprx WT	Metal Upcharge Grades 2/3/PC/SC			
30 RD	17 RD	434	56	533	61	850	61	1,034	61	1,078	80	478 ^A	62	44	86	162	240
36 RD	22 RD	491	83	773	92	966	92	1,222	92	1,273	119	599 ^{A,B,C}	92	53	127	192	259
42 RD	30 RD	740	148	1,037	159	1,277	159	1,525	159	1,582	196	856 ^{A,B,C}	160	54	144	275	328
48 RD	30 RD	796	164	1,094	180	1,344	180	1,615	180	1,856	228	891 ^{A,B,C}	180	54	144	275	328
60 RD	30 RD	1,035	205	1,490	230	1,821	230	2,186	230	2,620	305	1,124 ^A	230	54	144	275	328
24 SQ	17 RD	399	45	434	49	509	49	595	49	706	61	469 ^{A,C}	49	44	86	162	240
30 SQ	22 RD	468	70	529	76	626	76	730	76	836	95	546 ^{A,C}	77	53	127	192	259
36 SQ	22 RD	477	83	588	92	716	92	819	92	1,040	119	599 ^{A,B,C}	97	53	127	192	259
42 SQ	30 RD	724	148	825	159	1,010	159	1,195	159	1,503	196	842 ^{A,B,C}	160	54	144	275	328
48 SQ	30 RD	779	164	866	180	1,079	180	1,288	180	1,800	228	915 ^{A,B}	180	54	144	275	328
24x30	17 RD	437	50	458	55	545	55	641	55	725	70	473 ^{A,C}	55	44	86	162	240
24x42	22 RD	497	74	529	81	671	81	746	81	899	102	536 ^A	81	53	127	192	259
24x48	22 RD	514	78	563	86	711	86	839	86	969	110	543 ^A	86	53	127	192	259
24x60	17 RD +	658	99	749	109	1,048	109	1,112	109	1,243	139	N/A	N/A	88	172	325	480
30x42	22 RD	501	82	563	90	700	90	823	90	1,017	116	554 ^A	91	53	127	192	259
30x48	17 RD +	647	99	725	109	879	109	1,013	109	1,234	139	687 ^{A,C}	109	88	172	325	480
30x60	17 RD +	674	111	789	123	1,065	123	1,270	123	1,450	160	723 ^A	123	88	172	325	480
30x72	17 RD +	756	122	884	137	1,159	137	1,389	137	1,887	182	768 ^A	137	88	172	325	480
36x48	30 RD	746	146	934	158	991	158	1,177	158	1,480	194	N/A	N/A	54	144	275	328
36x60	30 RD	830	160	1,062	174	1,138	174	1,366	174	1,747	220	N/A	N/A	54	144	275	328
36x72	22 RD +	941	165	1,219	183	1,310	183	1,585	183	2,041	237	N/A	N/A	107	256	382	520

* = Denotes available as Drop Leaf top + = 2 bases per top included

A = 41111 B = 41333 C = 41120

DROP LEAF

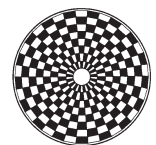
Top Size (Inches)	Base Size (Inches)	List Price	Apprx WT	List Price	Apprx WT	List Price	Apprx WT	List Price	Apprx WT	List Price	Apprx WT	List Price	Apprx WT	Metal Upcharge Grades 2/3/PC/SC			
36 SQ - 51 RD	30 RD	1,277	188	2,447	208	2,974	208	3,383	208	3,348	268	N/A	N/A	54	144	275	328
42 SQ - 60 RD	30 RD	1,433	211	2,713	236	3,091	236	3,529	236	4,425	311	N/A	N/A	54	144	275	328

HOW TO BUILD YOUR TABLE MODEL NUMBER:

B28 series table base with 17362 edge profile
 B28 plus edge profile number = **B28-17362**

NOTES:

- Pricing is for complete table.
- Use the next largest table price for intermediate table sizes.
- All prices are list, FOB factory.
- All prices are Grade 1 Laminate, Black Wrinkle, Maple species, standard wood finishes, and shipped unassembled.
- Maple species is standard. Oak species available for the same price (specify on order). Additional species also available, call for pricing.
- See Edge details in the Tables introduction section *Tables- Edge Profiles*.



17 RD
 22 RD
 30 RD



Shown with **WEBN** Top
31" Overall Table Height
31.25" Overall Table Height,
 Group E Only

Group A

Group B

Group C

Group D

Group E

Group F

Limited sizes available. See A,B,C next to price.

PC = Polished Chrome SC = Satin Chrome

Top Size (Inches)	Base Size (Inches)	List Price	Apprx WT	List Price	Apprx WT	List Price	Apprx WT	List Price	Apprx WT	List Price	Apprx WT	List Price	Apprx WT	Metal Upcharge Grades 2/3/PC/SC			
30 RD	17 RD	432	66	530	71	847	71	1,032	71	1,075	90	476 ^A	72	37	104	195	256
36 RD	22 RD	515	91	796	100	991	100	1,246	100	1,297	127	623 ^{A,B,C}	100	52	109	232	270
42 RD	30 RD	753	143	1,052	154	1,293	154	1,540	154	1,595	191	870 ^{A,B,C}	155	56	163	380	397
48 RD	30 RD	811	159	1,106	175	1,357	175	1,629	175	1,871	223	904 ^{A,B,C}	175	56	163	380	397
60 RD	30 RD	1,050	200	1,506	225	1,836	225	2,201	225	2,633	300	1,139 ^A	225	56	163	380	397
24 SQ	17 RD	397	55	432	59	505	59	590	59	702	71	467 ^{A,C}	59	37	104	195	256
30 SQ	22 RD	492	78	554	84	649	84	753	84	859	103	571 ^{A,C}	85	52	109	232	270
36 SQ	22 RD	502	91	612	100	738	100	843	100	1,063	127	623 ^{A,B,C}	105	52	109	232	270
42 SQ	30 RD	737	143	841	154	1,024	154	1,210	154	1,515	191	855 ^{A,B,C}	155	56	163	380	397
48 SQ	30 RD	791	159	879	175	1,095	175	1,303	175	1,815	223	931 ^{A,B}	175	56	163	380	397
24x30	17 RD	434	60	455	65	543	65	638	65	722	80	469 ^{A,C}	65	37	104	195	256
24x42	22 RD	521	82	554	89	694	89	771	89	923	110	560 ^A	89	52	109	232	270
24x48	17 RD +	631	90	681	98	829	98	956	98	1,087	122	661 ^A	98	73	208	390	513
24x60	17 RD +	650	99	744	109	1,042	109	1,105	109	1,237	139	N/A	N/A	73	208	390	513
30x42	22 RD	524	90	586	98	724	98	846	98	1,041	124	576 ^A	99	52	109	232	270
30x48	17 RD +	642	99	720	109	874	109	1,007	109	1,226	139	681 ^{A,C}	109	73	208	390	513
30x60	17 RD +	668	111	783	123	1,060	123	1,265	123	1,445	160	716 ^A	123	73	208	390	513
30x72	17 RD +	750	122	877	137	1,154	137	1,383	137	1,881	182	763 ^A	137	73	208	390	513
36x48	30 RD	761	141	947	153	1,006	153	1,191	153	1,495	189	N/A	N/A	56	163	380	397
36x60	30 RD	844	155	1,077	169	1,152	169	1,381	169	1,762	215	N/A	N/A	56	163	380	397
36x72	22 RD +	988	181	1,267	199	1,357	199	1,631	199	2,089	253	N/A	N/A	105	216	464	539

* = Denotes available as Drop Leaf top + = 2 bases per top included

A = 41111 B = 41333 C = 41120

DROP LEAF

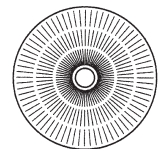
Top Size (Inches)	Base Size (Inches)	List Price	Apprx WT	List Price	Apprx WT	List Price	Apprx WT	List Price	Apprx WT	List Price	Apprx WT	List Price	Apprx WT	Metal Upcharge Grades 2/3/PC/SC			
36 SQ - 51 RD	30 RD	1,293	183	2,461	203	2,987	203	3,396	203	3,361	263	N/A	N/A	56	163	380	397
42 SQ - 60 RD	30 RD	1,448	206	2,728	231	3,104	231	3,542	231	4,438	306	N/A	N/A	56	163	380	397

HOW TO BUILD YOUR TABLE MODEL NUMBER:

B37 series table base with WEBN edge profile
 B37 plus edge profile number = **B37-WEBN**

NOTES:

- Pricing is for complete table.
- Use the next largest table price for intermediate table sizes.
- All prices are list, FOB factory.
- All prices are Grade 1 Laminate, Black Wrinkle, Maple species, standard wood finishes, and shipped unassembled.
- Maple species is standard. Oak species available for the same price (specify on order). Additional species also available, call for pricing.
- See Edge details in the Tables introduction section *Tables- Edge Profiles*.



17 RD
 22 RD
 30 RD



Shown with 41111 Top
29.25" Overall Table Height
29.5" Overall Table Height,
Group E Only

Group A

Group B

Group C

Group D

Group E

Butcher Block/
Random Plank
Ash Maple

Group F

Limited sizes available. See A,B,C next to price.

PC = Polished Chrome SC = Satin Chrome

Top Size (Inches)	Base Size (Inches)	List Price	Apprx WT	List Price	Apprx WT	List Price	Apprx WT	List Price	Apprx WT	List Price	Apprx WT	List Price	Apprx WT	Metal Upcharge Grades 2/3/PC/SC			
30 RD	22 RD	454	71	554	76	869	76	1,053	76	1,097	95	498 ^A	77	38	111	217	273
36 RD	22 RD	464	83	746	92	939	92	1,195	92	1,246	119	572 ^{A,B,C}	92	38	111	217	273
42 RD	22 RD	522	98	819	109	1,060	109	1,307	109	1,363	146	639 ^{A,B,C}	110	38	111	217	273
48 RD	30 RD	707	164	1,003	180	1,254	180	1,526	180	1,767	228	801 ^{A,B,C}	180	44	134	283	331
60 RD	30 RD	946	205	1,401	230	1,732	230	2,097	230	2,530	305	1,035 ^A	230	44	134	283	331
24 SQ	18 RD	373	45	409	49	484	49	570	49	681	61	445 ^{A,C}	49	35	96	181	239
30 SQ	22 RD	441	70	502	76	599	76	702	76	808	95	520 ^{A,C}	77	38	111	217	273
36 SQ	22 RD	451	83	562	92	688	92	790	92	1,013	119	572 ^{A,B,C}	97	38	111	217	273
42 SQ	30 RD	633	148	737	159	921	159	1,105	159	1,412	196	751 ^{A,B,C}	160	44	134	283	331
48 SQ	30 RD	689	164	777	180	991	180	1,199	180	1,711	228	826 ^{A,B}	180	44	134	283	331
24x30	22 RD	457	65	476	70	565	70	660	70	744	85	491 ^{A,C}	70	38	111	217	273
24x42	18 RD +	571	86	604	93	745	93	820	93	974	114	609 ^A	93	69	193	365	478
24x48	18 RD +	586	90	636	98	784	98	911	98	1,042	122	617 ^A	98	69	193	365	478
24x60	18 RD +	607	99	699	109	997	109	1,061	109	1,192	139	N/A	N/A	69	193	365	478
30x42	22 RD	473	82	535	90	672	90	795	90	991	116	525 ^A	91	38	111	217	273
30x48	30 RD	625	137	702	147	858	147	991	147	1,211	177	665 ^{A,C}	147	44	134	283	331
30x60	22 RD +	713	141	828	153	1,104	153	1,309	153	1,487	190	762 ^A	153	74	222	435	547
30x72	22 RD +	795	152	923	167	1,198	167	1,427	167	1,925	212	806 ^A	167	74	222	435	547
36x48	30 RD	658	146	844	158	902	158	1,087	158	1,392	194	N/A	N/A	44	134	283	331
36x60	22 RD +	802	152	1,034	166	1,109	166	1,339	166	1,719	212	N/A	N/A	74	222	435	547
36x72	22 RD +	887	165	1,164	183	1,255	183	1,530	183	1,986	237	N/A	N/A	74	222	435	547

* = Denotes available as Drop Leaf top + = 2 bases per top included

A = 41111 B = 41333 C = 41120

DROP LEAF

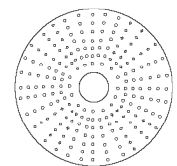
Top Size (Inches)	Base Size (Inches)	List Price	Apprx WT	List Price	Apprx WT	List Price	Apprx WT	List Price	Apprx WT	List Price	Apprx WT	List Price	Apprx WT	Metal Upcharge Grades 2/3/PC/SC			
36 SQ - 51 RD	30 RD	1,189	188	2,356	208	2,883	208	3,293	208	3,257	268	N/A	N/A	44	134	283	331
42 SQ - 60 RD	30 RD	1,345	211	2,624	236	3,001	236	3,439	236	4,335	311	N/A	N/A	44	134	283	331

HOW TO BUILD YOUR TABLE MODEL NUMBER:

B48 series table base with 41111 edge profile
B48 plus edge profile number = **B48-41111**

NOTES:

- Pricing is for complete table.
- Use the next largest table price for intermediate table sizes.
- All prices are list, FOB factory.
- All prices are Grade 1 Laminate, Black Wrinkle, Maple species, standard wood finishes, and shipped unassembled.
- Maple species is standard. Oak species available for the same price (specify on order). Additional species also available, call for pricing.
- See Edge details in the Tables introduction section *Tables- Edge Profiles*.



18 RD
22 RD
30 RD



Shown with **WEBN** Top
29" Overall Table Height
29.25" Overall Table Height,
 Group E Only

Group A

Group B

Group C

Group D

Group E

Ash Maple

Group F

Limited sizes available. See A,B,C next to price.

PC = Polished Chrome SC = Satin Chrome

Top Size (Inches)	Base Size (Inches)	List Price	Apprx WT	List Price	Apprx WT	List Price	Apprx WT	List Price	Apprx WT	List Price	Apprx WT	List Price	Apprx WT	Metal Upcharge Grades 2/3/PC/SC			
30 RD	24 RD	477	73	577	78	895	78	1,078	78	1,121	97	509 ⁵²²	79	32	123	207	255
36 RD	24 RD	488	85	771	94	964	94	1,219	94	1,270	121	582 ⁵⁹⁷	94	32	123	207	255
42 RD	30 RD	669	120	966	131	1,208	131	1,454	131	1,511	168	767 ⁷⁸⁶	132	39	148	331	374
48 RD	30 RD	733	137	1,031	153	1,279	153	1,553	153	1,793	201	807 ⁸²⁷	153	39	148	331	374
60 RD	30 RD	974	178	1,427	203	1,759	203	2,124	203	2,556	278	1035 ^{1,061}	203	39	148	331	374
24 SQ	20 RD	422	59	457	63	530	63	616	63	729	75	480 ⁴⁹²	63	30	104	179	228
30 SQ	24 RD	466	72	527	78	623	78	728	78	833	97	531 ⁵⁴⁴	79	32	123	207	255
36 SQ	24 RD	475	85	585	94	712	94	817	94	1,037	121	582 ⁵⁹⁷	99	32	123	207	255
42 SQ	30 RD	654	121	755	132	939	132	1,125	132	1,431	169	752 ⁷⁷¹	133	39	148	331	374
48 SQ	30 RD	716	137	803	153	1,017	153	1,226	153	1,737	201	832 ⁸⁵³	153	39	148	331	374
24x30	20 RD	459	64	481	69	569	69	663	69	746	84	483 ⁴⁹⁵	69	30	104	331	374
24x42	20 RD	484	74	517	81	659	81	733	81	886	102	509 ⁵²²	81	30	104	179	228
24x48	20 RD	501	78	550	86	698	86	825	86	955	110	517 ⁵³⁰	86	30	104	179	228
24x60	20 RD +	681	125	775	135	1,073	135	1,137	135	1,268	165	N/A	N/A	58	208	359	456
30x42	24 RD	497	84	561	92	697	92	820	92	1,015	118	537 ⁵⁵⁰	93	32	123	207	255
30x48	20 RD +	671	125	748	135	903	135	1,037	135	1,257	165	694 ⁷¹¹	135	58	208	359	456
30x60	20 RD +	699	137	815	149	1,091	149	1,296	149	1,474	186	728 ⁷⁴⁶	149	58	208	359	456
30x72	20 RD +	802	150	929	165	1,204	165	1,432	165	1,933	210	819 ⁸³⁹	165	58	208	359	456
36x48	30 RD	675	118	864	130	921	130	1,105	130	1,410	166	N/A	N/A	39	148	331	374
36x60	30 RD	761	132	992	146	1,067	146	1,297	146	1,678	192	N/A	N/A	39	148	331	374
36x72	24 RD +	936	169	1,214	187	1,305	187	1,579	187	2,036	241	N/A	N/A	64	249	413	510

* = Denotes available as Drop Leaf top + = 2 bases per top included

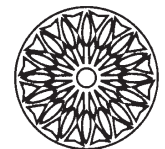
A = 41111 B = 41333 C = 41120

DROP LEAF

Top Size (Inches)	Base Size (Inches)	List Price	Apprx WT	List Price	Apprx WT	List Price	Apprx WT	List Price	Apprx WT	List Price	Apprx WT	List Price	Apprx WT	Metal Upcharge Grades 2/3/PC/SC			
36 SQ - 51 RD	30 RD	1,215	161	2,384	181	2,910	181	3,318	181	3,285	241	N/A	N/A	40	151	337	381
42 SQ - 60 RD	30 RD	1,370	184	2,650	209	3,027	209	3,466	209	4,359	284	N/A	N/A	40	151	337	381

HOW TO BUILD YOUR TABLE MODEL NUMBER:

B50 series table base with WEBN edge profile
 B50 plus edge profile number = **B50-WEBN**



20 RD
 24 RD
 30 RD

NOTES:

- Pricing is for complete table.
- Use the next largest table price for intermediate table sizes.
- All prices are list, FOB factory.
- All prices are Grade 1 Laminate, Black Wrinkle, Maple species, standard wood finishes, and shipped unassembled.
- Maple species is standard. Oak species available for the same price (specify on order). Additional species also available, call for pricing.
- See Edge details in the Tables introduction section *Tables- Edge Profiles*.



Shown with **KPV** Top
28.75" Overall Table Height
29" Overall Table Height,
 Group E Only

Group A

Group B

Group C

Group D

Group E

Butcher Block/
Random Plank

Ash Maple

Group F

Limited sizes available. See A,B,C next to price.

PC = Polished Chrome SC = Satin Chrome

Top Size (Inches)	Base Size (Inches)	List Price	Apprx WT	List Price	Apprx WT	List Price	Apprx WT	List Price	Apprx WT	List Price	Apprx WT	List Price	Apprx WT	Metal Upcharge Grades 2/3/PC/SC			
30 RD	18 RD	684	69	782	74	1,099	74	1,282	74	1,326	93	727 ^A	75	7	17	127	267
36 RD	22 RD	727	86	1,008	95	1,201	95	1,458	95	1,509	122	834 ^{A,B,C}	95	9	19	194	292
42 RD	22 RD	784	101	1,081	112	1,322	112	1,569	112	1,626	149	901 ^{A,B,C}	113	9	19	194	292
48 RD	26 RD	891	122	1,188	138	1,438	138	1,710	138	1,950	186	984 ^{A,B,C}	138	10	22	218	251
60 RD	N/A	N/A	N/A	N/A	N/A	N/A	N/A	N/A	N/A	N/A	N/A	N/A	N/A	N/A	N/A	N/A	N/A
24 SQ	18 RD	647	58	684	62	756	62	843	62	955	74	719 ^{A,C}	62	7	17	127	267
30 SQ	22 RD	697	68	759	74	855	74	958	74	1,065	93	782 ^{A,C}	75	9	19	194	292
36 SQ	22 RD	713	86	824	95	951	95	1,054	95	1,275	122	834 ^{A,B,C}	100	9	19	194	292
42 SQ	22 RD	768	101	870	112	1,054	112	1,240	112	1,547	149	886 ^{A,B,C}	113	9	19	194	292
48 SQ	26 RD	873	122	959	138	1,174	138	1,383	138	1,894	186	1,009 ^{A,B}	138	10	22	218	251
24x30	22 RD	721	68	740	73	828	73	923	73	1,007	88	754 ^{A,C}	73	9	19	194	292
24x42	N/A	N/A	N/A	N/A	N/A	N/A	N/A	N/A	N/A	N/A	N/A	N/A	N/A	N/A	N/A	N/A	N/A
24x48	N/A	N/A	N/A	N/A	N/A	N/A	N/A	N/A	N/A	N/A	N/A	N/A	N/A	N/A	N/A	N/A	N/A
24x60	18 RD +	1,154	125	1,247	135	1,546	135	1,610	135	1,740	165	N/A	N/A	14	36	256	534
30x42	N/A	N/A	N/A	N/A	N/A	N/A	N/A	N/A	N/A	N/A	N/A	N/A	N/A	N/A	N/A	N/A	N/A
30x48	26 RD	808	95	886	105	1,041	105	1,174	105	1,394	135	848 ^{A,C}	105	10	22	218	251
30x60	18 RD +	1,172	137	1,287	149	1,563	149	1,768	149	1,946	186	1,218 ^A	149	14	36	256	534
30x72	18 RD +	1,254	148	1,381	163	1,657	163	1,885	163	2,385	208	1,263 ^A	163	14	36	256	534
36x48	26 RD	841	104	1,027	116	1,085	116	1,270	116	1,574	152	N/A	N/A	10	22	218	251
36x60	22 RD +	1,327	158	1,560	172	1,634	172	1,863	172	2,244	218	N/A	N/A	18	39	385	583
36x72	22 RD +	1,412	171	1,689	189	1,780	189	2,055	189	2,512	243	N/A	N/A	18	39	385	583

* = Denotes available as Drop Leaf top + = 2 bases per top included Welded Steel base, shipped set up **A** = 41111 **B** = 41333 **C** = 41120

DROP LEAF

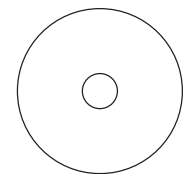
Top Size (Inches)	Base Size (Inches)	List Price	Apprx WT	List Price	Apprx WT	List Price	Apprx WT	List Price	Apprx WT	List Price	Apprx WT	List Price	Apprx WT	Metal Upcharge Grades 2/3/PC/SC			
36 SQ - 51 RD	26 RD	1,371	146	2,542	166	3,068	166	3,477	166	3,443	226	N/A	N/A	N/A	N/A	N/A	N/A
42 SQ - 60 RD	N/A	N/A	N/A	N/A	N/A	N/A	N/A	N/A	N/A	N/A	N/A	N/A	N/A	N/A	N/A	N/A	N/A

HOW TO BUILD YOUR TABLE MODEL NUMBER:

B53 series table base with KPV edge profile
 B53 plus edge profile number = **B53-KPV**

NOTES:

- Pricing is for complete table.
- Use the next largest table price for intermediate table sizes.
- All prices are list, FOB factory.
- All prices are Grade 1 Laminate, Black Wrinkle, Maple species, standard wood finishes, and shipped unassembled.
- Maple species is standard. Oak species available for the same price (specify on order). Additional species also available, call for pricing.
- See Edge details in the Tables introduction section *Tables - Edge Profiles*.



18 RD
 22 RD
 26 RD



Shown with WE Top

28.75" Overall Table Height
29" Overall Table Height,
Group E Only

Group A

Group B

Group C

Group D

Group E

Ash Maple

Group F

Limited sizes available. See A,B,C next to price.

PC = Polished Chrome SC = Satin Chrome

Top Size (Inches)	Base Size (Inches)	List Price	Apprx WT	List Price	Apprx WT	List Price	Apprx WT	List Price	Apprx WT	List Price	Apprx WT	List Price	Apprx WT	Metal Upcharge Grades 2/3/PC/SC			
30 RD	26x26	738	64	838	69	1,155	69	1,339	69	1,383	88	782 ^A	70	7	11	112	199
36 RD	32x32	764	80	1,046	89	1,240	89	1,497	89	1,547	116	872 ^{A,B,C}	89	10	15	111	200
42 RD	32x32	822	95	1,119	106	1,359	106	1,607	106	1,663	143	938 ^{A,B,C}	107	10	15	111	200
48 RD	38x38	1,247	132	1,544	148	1,794	148	2,065	148	2,307	196	1,340 ^{A,B,C}	148	16	22	244	409
60 RD	38x38	1,485	173	1,941	198	2,271	198	2,637	198	3,071	273	1,574 ^A	198	16	22	244	409
24 SQ	18x18	684	50	720	54	791	54	878	54	991	66	753 ^{A,C}	54	3	9	112	199
30 SQ	26x26	727	63	787	69	884	69	988	69	1,095	88	805 ^{A,C}	70	7	11	112	199
36 SQ	32x32	750	80	861	89	988	89	1,093	89	1,313	116	872 ^{A,B,C}	94	10	15	111	200
42 SQ	32x32	806	95	907	106	1,093	106	1,277	106	1,584	143	923 ^{A,B,C}	107	10	15	111	200
48 SQ	38x38	1,229	132	1,315	148	1,530	148	1,739	148	2,251	196	1,365 ^{A,B}	148	16	22	244	409
24x30	18x26	732	56	752	61	842	61	936	61	1,020	76	768 ^{A,C}	61	7	11	112	199
24x42	18x32	756	67	789	74	932	74	1,007	74	1,158	95	795 ^A	74	10	15	111	200
24x48	2x18 +	762	98	811	106	958	106	1,087	106	1,217	130	790 ^A	106	7	11	56	100
24x60	2x18 +	781	107	874	117	1,172	117	1,236	117	1,366	147	N/A	N/A	7	11	56	100
30x42	26x38	821	81	884	89	1,021	89	1,143	89	1,339	115	873 ^A	90	16	22	162	257
30x48	26x38	844	86	921	96	1,077	96	1,210	96	1,429	126	884 ^{A,C}	96	16	22	162	257
30x60	2x24 +	820	123	935	135	1,211	135	1,416	135	1,595	172	868 ^A	135	10	15	110	202
30x72	2x24 +	902	134	1,028	149	1,305	149	1,532	149	2,033	194	911 ^A	149	10	15	110	202
36x48	26x38	876	95	1,063	107	1,121	107	1,306	107	1,610	143	N/A	N/A	16	22	162	257
36x60	2x24 +	907	134	1,140	148	1,216	148	1,445	148	1,826	194	N/A	N/A	10	15	110	202
36x72	2x24 +	993	147	1,271	165	1,361	165	1,636	165	2,093	219	N/A	N/A	10	15	110	202

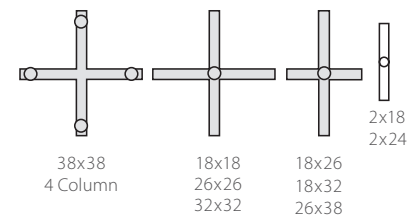
* = Denotes available as Drop Leaf top + = 2 bases per top included Welded Steel base, shipped set up A = 41111 B = 41333 C = 41120

DROP LEAF

Top Size (Inches)	Base Size (Inches)	List Price	Apprx WT	List Price	Apprx WT	List Price	Apprx WT	List Price	Apprx WT	List Price	Apprx WT	List Price	Apprx WT	Metal Upcharge Grades 2/3/PC/SC			
36 SQ - 51 RD	N/A	N/A	N/A	N/A	N/A	N/A	N/A	N/A	N/A	N/A	N/A	N/A	N/A	N/A	N/A	N/A	N/A
42 SQ - 60 RD	N/A	N/A	N/A	N/A	N/A	N/A	N/A	N/A	N/A	N/A	N/A	N/A	N/A	N/A	N/A	N/A	N/A

HOW TO BUILD YOUR TABLE MODEL NUMBER:

B55 series table base with WE edge profile
B55 plus edge profile number = **B55-WE**



NOTES:

- Pricing is for complete table.
- Use the next largest table price for intermediate table sizes.
- All prices are list, FOB factory.
- All prices are Grade 1 Laminate, Black Wrinkle, Maple species, standard wood finishes, and shipped unassembled.
- Maple species is standard. Oak species available for the same price (specify on order). Additional species also available, call for pricing.
- See Edge details in the Tables introduction section *Tables- Edge Profiles*.



Shown with WE Top

29.5" Overall Table Height
29.75" Overall Table Height,
Group E Only

Group A

Group B

Group C

Group D

Group E

Butcher Block/
Random Plank
Ash
Maple

Group F

Limited sizes available. See A,B,C next to price.

PC = Polished Chrome SC = Satin Chrome

Top Size (Inches)	Base Size (Inches)	List Price		Apprx WT		List Price		Apprx WT		List Price		Apprx WT		List Price		Apprx WT		Metal Upcharge Grades 2/3/PC/SC			
30 RD	22x22	457	57	556	62	873	62	1,056	62	1,100	81	501 ^A	63	10	69	84	113				
36 RD	28x28	516	75	798	84	991	84	1,247	84	1,298	111	624 ^{A,B,C}	84	16	83	98	146				
42 RD	28x28	573	90	870	101	1,111	101	1,358	101	1,415	138	690 ^{A,B,C}	102	16	83	98	146				
48 RD	36x36	760	125	1,055	141	1,306	141	1,576	141	1,819	189	853 ^{A,B,C}	141	24	90	121	169				
60 RD	5 Col. 36x36	1,360	177	1,817	202	2,147	202	2,512	202	2,946	277	1,449 ^A	202	34	136	240	333				
24 SQ	22x22	422	46	457	50	530	50	616	50	729	62	492 ^{A,C}	50	10	69	84	113				
30 SQ	22x22	445	56	505	62	603	62	706	62	812	81	523 ^{A,C}	63	10	69	84	113				
36 SQ	28x28	502	75	613	84	740	84	843	84	1,064	111	624 ^{A,B,C}	89	16	83	98	146				
42 SQ	36x36	686	109	788	120	974	120	1,157	120	1,465	157	804 ^{A,B,C}	121	24	90	121	146				
48 SQ	5 Col. 36x36	1,104	136	1,192	152	1,405	152	1,614	152	2,126	200	1,240 ^{A,B}	152	34	136	240	333				
24x30	22x22	459	51	481	56	569	56	663	56	746	71	495 ^{A,C}	56	10	69	84	113				
24x42	22x28	502	65	533	72	675	72	750	72	903	93	540 ^A	72	16	83	103	139				
24x48	22x28	518	69	568	77	716	77	843	77	974	101	549 ^A	77	16	83	103	139				
24x60	2x22 +	562	87	655	97	953	97	1,017	97	1,148	127	N/A	N/A	14	103	114	179				
30x42	22x28	504	73	568	81	703	81	827	81	1,022	107	558 ^A	82	16	83	103	139				
30x48	2x22 +	552	87	629	97	784	97	918	97	1,138	127	590 ^{A,C}	97	14	103	114	179				
30x60	2x22 +	580	99	694	111	970	111	1,175	111	1,355	148	626 ^A	111	14	103	114	179				
30x72	2x22 +	662	110	788	125	1,064	125	1,294	125	1,792	170	672 ^A	125	14	103	114	179				
36x48	2x22 +	583	96	772	108	829	108	1,014	108	1,317	144	N/A	N/A	14	103	114	179				
36x60	2x22 +	668	110	900	124	976	124	1,204	124	1,585	170	N/A	N/A	14	103	114	179				
36x72	2x22 +	752	123	1,032	141	1,121	141	1,396	141	1,853	195	N/A	N/A	14	103	114	179				

* = Denotes available as Drop Leaf top + = 2 bases per top included

A = 41111 B = 41333 C = 41120

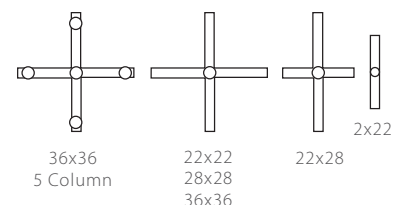
DROP LEAF

Top Size (Inches)	Base Size (Inches)	List Price		Apprx WT		List Price		Apprx WT		List Price		Apprx WT		Metal Upcharge Grades 2/3/PC/SC							
36 SQ - 51 RD	36x36	1,182	149	2,294	169	2,795	169	3,185	169	3,152	229	N/A	N/A	24	90	121	146				
42 SQ - 60 RD	N/A	N/A	N/A	N/A	N/A	N/A	N/A	N/A	N/A	N/A	N/A	N/A	N/A	N/A	N/A	N/A	N/A				

HOW TO BUILD YOUR TABLE MODEL NUMBER:

B56 series table base with WE edge profile

B56 plus edge profile number = **B56-WE**



NOTES:

- Pricing is for complete table.
- Use the next largest table price for intermediate table sizes.
- All prices are list, FOB factory.
- All prices are Grade 1 Laminate, Black Wrinkle, Maple species, standard wood finishes, and shipped unassembled.
- Maple species is standard. Oak species available for the same price (specify on order). Additional species also available, call for pricing.
- See Edge details in the Tables introduction section *Tables- Edge Profiles*.



Shown with **BEWE** Top
28.75" Overall Table Height
29" Overall Table Height,
 Group E Only

Group A

Group B

Group C

Group D

Group E

Group F

Limited sizes available. See A,B,C next to price.

PC = Polished Chrome SC = Satin Chrome

Top Size (Inches)	Base Size (Inches)	List Price	Apprx WT	List Price	Apprx WT	List Price	Apprx WT	List Price	Apprx WT	List Price	Apprx WT	List Price	Apprx WT	Metal Upcharge Grades 2/3/PC/SC			
30 RD	22x22	457	54	556	59	873	59	1,056	59	1,100	78	501 ^A	60	7	60	138	168
36 RD	30x30	490	69	773	78	965	78	1,221	78	1,272	105	598 ^{A,B,C}	78	10	82	212	251
42 RD	30x30	547	84	845	95	1,085	95	1,334	95	1,390	132	665 ^{A,B,C}	96	10	82	212	251
48 RD	30x30	606	100	901	116	1,152	116	1,424	116	1,664	164	698 ^{A,B,C}	116	10	82	212	251
60 RD	40x40	1,219	186	1,675	211	2,005	211	2,371	211	2,805	286	1,309 ^A	211	28	170	482	535
24 SQ	22x22	422	43	457	47	530	47	616	47	729	59	492 ^{A,C}	47	7	60	138	168
30 SQ	22x22	445	53	505	59	603	59	706	59	812	78	523 ^{A,C}	60	7	60	138	168
36 SQ	30x30	476	69	587	78	714	78	818	78	1,039	105	598 ^{A,B,C}	83	10	82	212	251
42 SQ	30x30	531	84	633	95	818	95	1,003	95	1,310	132	649 ^{A,B,C}	96	10	82	212	251
48 SQ	40x40	962	145	1,051	161	1,265	161	1,473	161	1,984	209	1,100 ^{A,B}	161	28	170	482	535
24x30	22x22	459	48	481	53	569	53	663	53	746	68	495 ^{A,C}	53	7	60	138	168
24x42	22x30	560	67	590	74	733	74	808	74	960	95	597 ^A	74	10	82	212	251
24x48	22x30	575	71	625	79	773	79	901	79	1,032	103	606 ^A	79	10	82	212	251
24x60	3x22 +	616	83	709	93	1,008	93	1,072	93	1,201	123	N/A	N/A	14	66	133	206
30x42	22x30	563	75	625	83	763	83	886	83	1,079	109	615 ^A	84	10	82	212	251
30x48	3x22 +	607	83	685	93	839	93	974	93	1,192	123	646 ^{A,C}	93	14	67	133	206
30x60	3x22 +	633	95	748	107	1,025	107	1,230	107	1,409	144	682 ^A	107	14	67	133	206
30x72	3x22 +	718	106	843	121	1,119	121	1,348	121	1,846	166	727 ^A	121	14	67	133	206
36x48	30x30	555	82	742	94	800	94	984	94	1,288	130	N/A	N/A	10	82	212	251
36x60	3x22 +	723	106	955	120	1,031	120	1,259	120	1,640	166	N/A	N/A	14	66	133	206
36x72	22x22 +	873	131	1,151	149	1,241	149	1,515	149	1,973	203	N/A	N/A	14	119	276	335

* = Denotes available as Drop Leaf top + = 2 bases per top included

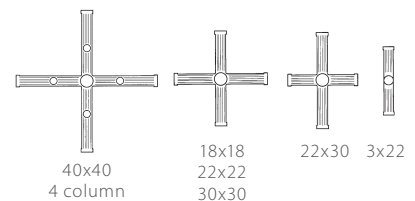
A = 41111 B = 41333 C = 41120

DROP LEAF

Top Size (Inches)	Base Size (Inches)	List Price	Apprx WT	List Price	Apprx WT	List Price	Apprx WT	List Price	Apprx WT	List Price	Apprx WT	List Price	Apprx WT	Metal Upcharge Grades 2/3/PC/SC			
36 SQ - 51 RD	30x30	1,085	124	2,255	144	2,781	144	3,190	144	3,155	204	N/A	N/A	10	82	212	251
42 SQ - 60 RD	N/A	N/A	N/A	N/A	N/A	N/A	N/A	N/A	N/A	N/A	N/A	N/A	N/A	N/A	N/A	N/A	N/A

HOW TO BUILD YOUR TABLE MODEL NUMBER:

B62 series table base with BEWE edge profile
 B62 plus edge profile number = **B62-BEWE**



NOTES:

- Pricing is for complete table.
- Use the next largest table price for intermediate table sizes.
- All prices are list, FOB factory.
- All prices are Grade 1 Laminate, Black Wrinkle, Maple species, standard wood finishes, and shipped unassembled.
- Maple species is standard. Oak species available for the same price (specify on order). Additional species also available, call for pricing.
- See Edge details in the Tables introduction section *Tables- Edge Profiles*.



Shown with WE Top

30.25" Overall Table Height
30.5" Overall Table Height,
Group E Only

Group A

Group B

Group C

Group D

Group E

Butcher Block/
Random Plank

Ash

Butcher Block/
Random Plank

Maple

Group F

Limited sizes available. See A,B,C next to price.

PC = Polished Chrome SC = Satin Chrome

Top Size (Inches)	Base Size (Inches)	List Price	Apprx WT	List Price	Apprx WT	List Price	Apprx WT	List Price	Apprx WT	List Price	Apprx WT	List Price	Apprx WT	Metal Upcharge Grades 2/3/PC/SC			
30 RD	22x22	573	59	672	64	989	64	1,173	64	1,217	83	617 ^A	65	25	N/A	N/A	N/A
36 RD	28x28	619	77	901	86	1,096	86	1,351	86	1,401	113	727 ^{A,B,C}	86	35	N/A	N/A	N/A
42 RD	28x28	677	92	975	103	1,215	103	1,462	103	1,517	140	793 ^{A,B,C}	104	35	N/A	N/A	N/A
48 RD	32x32	775	116	1,070	132	1,321	132	1,593	132	1,834	180	868 ^{A,B,C}	132	48	N/A	N/A	N/A
60 RD	6x22 ++ s	1,645	185	2,100	210	2,432	210	2,798	210	3,231	285	1,685 ^A	210	56	N/A	N/A	N/A
24 SQ	22x22	537	48	573	52	647	52	733	52	845	64	609 ^{A,C}	52	25	N/A	N/A	N/A
30 SQ	22x22	562	58	622	64	720	64	823	64	929	83	640 ^{A,C}	65	25	N/A	N/A	N/A
36 SQ	28x28	607	77	718	86	843	86	947	86	1,167	113	727 ^{A,B,C}	91	35	N/A	N/A	N/A
42 SQ	32x32	701	100	804	111	987	111	1,173	111	1,479	148	819 ^{A,B,C}	112	48	N/A	N/A	N/A
48 SQ	32x32	755	116	843	132	1,057	132	1,267	132	1,777	180	894 ^{A,B}	132	48	N/A	N/A	N/A
24x30	22x22	576	53	597	58	685	58	780	58	864	73	612 ^{A,C}	58	25	N/A	N/A	N/A
24x42	22x32	641	69	672	76	816	76	890	76	1,042	97	679 ^A	76	48	N/A	N/A	N/A
24x48	22x32	658	73	706	81	854	81	982	81	1,112	105	687 ^A	81	48	N/A	N/A	N/A
24x60	6x22 +	777	93	869	103	1,167	103	1,232	103	1,363	133	N/A	N/A	38	N/A	N/A	N/A
30x42	22x32	643	77	706	85	843	85	965	85	1,160	111	695 ^A	86	48	N/A	N/A	N/A
30x48	6x22 +	767	93	844	103	999	103	1,133	103	1,353	133	806 ^{A,C}	103	38	N/A	N/A	N/A
30x60	6x22 +	794	105	908	117	1,185	117	1,391	117	1,569	154	842 ^A	117	38	N/A	N/A	N/A
30x72	6x22 + s	877	116	1,003	131	1,278	131	1,508	131	2,006	176	888 ^A	131	38	N/A	N/A	N/A
36x48	6x22 +	798	102	986	114	1,043	114	1,229	114	1,532	150	N/A	N/A	38	N/A	N/A	N/A
36x60	6x22 + s	947	116	1,181	130	1,255	130	1,484	130	1,864	176	N/A	N/A	38	N/A	N/A	N/A
36x72	28 + s	1,197	153	1,475	171	1,566	171	1,840	171	2,297	225	N/A	N/A	50	N/A	N/A	N/A

* = Denotes available as Drop Leaf top + = 2 bases per top included ++ = 3 bases per top included A = 41111 B = 41333 C = 41120

DROP LEAF

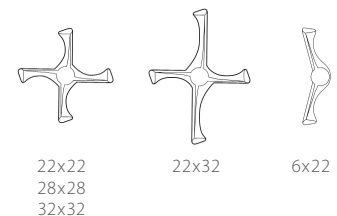
Top Size (Inches)	Base Size (Inches)	List Price	Apprx WT	List Price	Apprx WT	List Price	Apprx WT	List Price	Apprx WT	List Price	Apprx WT	List Price	Apprx WT	Metal Upcharge Grades 2/3/PC/SC			
36 SQ - 51 RD	32x32	1,157	140	2,327	160	2,854	160	3,262	160	3,228	220	N/A	N/A	48	N/A	N/A	N/A
42 SQ - 60 RD	N/A	N/A	N/A	N/A	N/A	N/A	N/A	N/A	N/A	N/A	N/A	N/A	N/A	N/A	N/A	N/A	N/A

HOW TO BUILD YOUR TABLE MODEL NUMBER:

B76 series table base with WE edge profile
B76 plus edge profile number = **B76-WE**

NOTES:

- Pricing is for complete table.
- Use the next largest table price for intermediate table sizes.
- All prices are list, FOB factory.
- All prices are Grade 1 Laminate, Black Wrinkle, Maple species, standard wood finishes, and shipped unassembled.
- Maple species is standard. Oak species available for the same price (specify on order). Additional species also available, call for pricing.
- See Edge details in the Tables introduction section *Tables- Edge Profiles*.





Shown with **41111** Top
30" Overall Table Height
30.25" Overall Table Height,
 Group E Only

Group A

Group B

Group C

Group D

Group E

Group F

Limited sizes available. See A,B,C next to price.

PC = Polished Chrome SC = Satin Chrome

Top Size (Inches)	Base Size (Inches)	List Price	Apprx WT	List Price	Apprx WT	List Price	Apprx WT	List Price	Apprx WT	List Price	Apprx WT	List Price	Apprx WT	Metal Upcharge Grades 2/3/PC/SC			
30 RD	22x22	526	73	625	78	941	78	1,125	78	1,169	97	570 ^A	79	9	90	237	252
36 RD	26x26	572	88	853	97	1,047	97	1,303	97	1,354	124	680 ^{A,B,C}	97	10	98	260	279
42 RD	32x32	670	121	968	132	1,208	132	1,456	132	1,512	169	787 ^{A,B,C}	133	15	122	360	378
48 RD	32x32	728	137	1,024	153	1,274	153	1,547	153	1,787	201	821 ^{A,B,C}	153	15	122	360	378
60 RD	32x32	965	178	1,422	203	1,752	203	2,118	203	2,551	278	1,055 ^A	203	15	122	360	378
24 SQ	22x22	490	62	526	66	600	66	686	66	798	78	562 ^{A,C}	66	9	90	237	252
30 SQ	22x22	514	72	574	78	670	78	776	78	880	97	591 ^{A,C}	79	9	90	237	252
36 SQ	32x32	600	106	711	115	837	115	940	115	1,161	142	721 ^{A,B,C}	120	15	122	360	378
42 SQ	32x32	655	121	756	132	940	132	1,126	132	1,432	169	772 ^{A,B,C}	133	15	122	360	378
48 SQ	32x32	709	137	796	153	1,011	153	1,219	153	1,731	201	847 ^{A,B}	153	15	122	360	378
24x30	22x22	528	67	549	72	638	72	731	72	817	87	564 ^{A,C}	72	9	90	237	252
24x42	N/A	N/A	N/A	N/A	N/A	N/A	N/A	N/A	N/A	N/A	N/A	N/A	N/A	N/A	N/A	N/A	N/A
24x48	N/A	N/A	N/A	N/A	N/A	N/A	N/A	N/A	N/A	N/A	N/A	N/A	N/A	N/A	N/A	N/A	N/A
24x60	22x22 +	839	133	933	143	1,231	143	1,296	143	1,426	173	N/A	N/A	18	180	473	505
30x42	32x32	622	105	685	113	822	113	945	113	1,139	139	674 ^A	114	15	122	360	378
30x48	32x32	645	110	723	120	877	120	1,011	120	1,231	150	685 ^{A,C}	120	15	122	360	378
30x60	22x22 +	858	145	974	157	1,248	157	1,453	157	1,632	194	904 ^A	157	18	180	473	505
30x72	22x22 +	939	156	1,066	171	1,342	171	1,570	171	2,071	216	949 ^A	171	18	180	473	505
36x48	32x32	677	119	865	131	923	131	1,106	131	1,411	167	N/A	N/A	15	122	360	378
36x60	22x22 +	946	156	1,179	170	1,253	170	1,482	170	1,863	216	N/A	N/A	18	180	473	505
36x72	22x22 +	1,032	169	1,309	187	1,399	187	1,674	187	2,132	241	N/A	N/A	18	180	473	505

* = Denotes available as Drop Leaf top + = 2 bases per top included

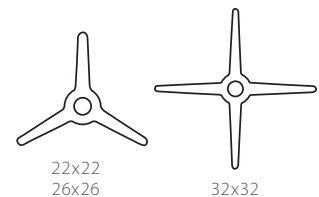
A = 41111 B = 41333 C = 41120

DROP LEAF

Top Size (Inches)	Base Size (Inches)	List Price	Apprx WT	List Price	Apprx WT	List Price	Apprx WT	List Price	Apprx WT	List Price	Apprx WT	List Price	Apprx WT	Metal Upcharge Grades 2/3/PC/SC			
36 SQ - 51 RD	32x32	1,208	161	2,377	181	2,904	181	3,312	181	3,278	241	N/A	N/A	15	122	360	378
42 SQ - 60 RD	32x32	1,365	184	2,645	209	3,022	209	3,458	209	4,354	284	N/A	N/A	15	122	360	378

HOW TO BUILD YOUR TABLE MODEL NUMBER:

B78 series table base with 41111 edge profile
 B78 plus edge profile number = **B78-41111**



NOTES:

- Pricing is for complete table.
- Use the next largest table price for intermediate table sizes.
- All prices are list, FOB factory.
- All prices are Grade 1 Laminate, Black Wrinkle, Maple species, standard wood finishes, and shipped unassembled.
- Maple species is standard. Oak species available for the same price (specify on order). Additional species also available, call for pricing.
- See Edge details in the Tables introduction section *Tables- Edge Profiles*.



Shown with **VBN** Top
 29.75" Overall Table Height
 30" Overall Table Height,
 Group E Only

Group A

Group B

Group C

Group D

Group E

Butcher Block/
Random Plank

Ash Maple

Group F

Limited sizes available. See A,B,C next to price.

PC = Polished Chrome SC = Satin Chrome

Top Size (Inches)	Base Size (Inches)	List Price	Apprx WT	List Price	Apprx WT	List Price	Apprx WT	List Price	Apprx WT	List Price	Apprx WT	List Price	Apprx WT	Metal Upcharge Grades 2/3/PC/SC			
30 RD	16 RD	526	72	611	77	918	77	1,098	77	1,141	96	570 ^A	78	10	108	288	305
36 RD	24 RD	650	111	933	120	1,126	120	1,383	120	1,432	147	760 ^{A,B,C}	120	18	259	387	413
42 RD	24 RD	708	126	1,006	137	1,246	137	1,494	137	1,550	174	825 ^{A,B,C}	138	18	259	387	413
48 RD	24 RD	765	142	1,061	158	1,312	158	1,584	158	1,825	206	858 ^{A,B,C}	158	18	157	387	413
60 RD	16 RD ++	1,412	199	1,868	224	2,199	224	2,564	224	2,997	299	1,502 ^A	224	34	322	863	916
24 SQ	16 RD	490	61	526	65	600	65	686	65	798	77	562 ^{A,C}	65	10	108	288	305
30 SQ	16 RD	514	71	574	77	670	77	776	77	880	96	591 ^{A,C}	78	10	108	288	305
36 SQ	24 RD	638	111	747	120	875	120	979	120	1,199	147	760 ^{A,B,C}	125	18	157	387	413
42 SQ	24 RD	692	126	794	137	979	137	1,163	137	1,471	174	809 ^{A,B,C}	138	18	157	387	413
48 SQ	24 RD	746	142	834	158	1,048	158	1,257	158	1,768	206	885 ^{A,B}	158	18	157	387	413
24x30	16 RD	528	66	549	71	638	71	731	71	817	86	564 ^{A,C}	71	10	108	288	305
24x42	16 RD +	804	118	836	125	979	125	1,053	125	1,206	146	842 ^A	125	23	215	575	611
24x48	16 RD +	820	122	869	130	1,017	130	1,146	130	1,275	154	850 ^A	130	23	215	575	611
24x60	16 RD +	839	131	933	141	1,231	141	1,296	141	1,426	171	N/A	N/A	23	215	575	611
30x42	24 RD	660	110	723	118	859	118	982	118	1,178	144	712 ^A	119	18	157	387	413
30x48	16 RD +	830	131	906	141	1,062	141	1,195	141	1,416	171	869 ^{A,C}	141	23	215	575	611
30x60	16 RD +	858	143	974	155	1,248	155	1,453	155	1,632	192	904 ^A	155	23	215	575	611
30x72	16 RD +	939	154	1,066	169	1,342	169	1,570	169	2,071	214	949 ^A	169	23	215	575	611
36x48	16 RD +	861	140	1,050	152	1,106	152	1,293	152	1,596	188	N/A	N/A	23	215	575	611
36x60	16 RD +	946	154	1,179	168	1,253	168	1,482	168	1,863	214	N/A	N/A	23	215	575	611
36x72	16 RD +	1,032	167	1,309	185	1,399	185	1,674	185	2,132	239	N/A	N/A	23	215	575	611

* = Denotes available as Drop Leaf top + = 2 bases per top included ++ = 3 bases per top included A = 41111 B = 41333 C = 41120

DROP LEAF

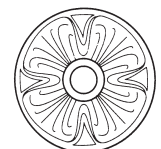
Top Size (Inches)	Base Size (Inches)	List Price	Apprx WT	List Price	Apprx WT	List Price	Apprx WT	List Price	Apprx WT	List Price	Apprx WT	List Price	Apprx WT	Metal Upcharge Grades 2/3/PC/SC			
36 SQ - 51 RD	24 RD	1,246	166	2,414	186	2,941	186	3,351	186	3,315	246	N/A	N/A	18	157	387	413
42 SQ - 60 RD	N/A	N/A	N/A	N/A	N/A	N/A	N/A	N/A	N/A	N/A	N/A	N/A	N/A	N/A	N/A	N/A	N/A

HOW TO BUILD YOUR TABLE MODEL NUMBER:

B80 series table base with VBN edge profile
 B80 plus edge profile number = **B80-VBN**

NOTES:

- Pricing is for complete table.
- Use the next largest table price for intermediate table sizes.
- All prices are list, FOB factory.
- All prices are Grade 1 Laminate, Black Wrinkle, Maple species, standard wood finishes, and shipped unassembled.
- Maple species is standard. Oak species available for the same price (specify on order). Additional species also available, call for pricing.
- See Edge details in the Tables introduction section *Tables- Edge Profiles*.



16 RD
24 RD



Shown with WE Top
 30" Overall Table Height
 30.25" Overall Table Height,
 Group E Only

Group A

Group B

Group C

Group D

Group E

Group F

Limited sizes available. See A,B,C next to price.

PC = Polished Chrome SC = Satin Chrome

Top Size (Inches)	Base Size (Inches)	List Price	Apprx WT	List Price	Apprx WT	List Price	Apprx WT	List Price	Apprx WT	List Price	Apprx WT	List Price	Apprx WT	Metal Upcharge Grades 2/3/PC/SC			
30 RD	24x24	606	86	703	91	1,021	91	1,204	91	1,248	110	648 ^A	92	9	60	237	252
36 RD	24x24	615	98	897	107	1,092	107	1,347	107	1,397	134	724 ^{A,B,C}	107	9	60	237	252
42 RD	24x24	672	113	970	124	1,211	124	1,458	124	1,514	161	790 ^{A,B,C}	125	9	60	237	252
48 RD	24x24	729	129	1,026	145	1,276	145	1,549	145	1,789	193	824 ^{A,B,C}	145	9	60	237	252
60 RD	N/A	N/A	N/A	N/A	N/A	N/A	N/A	N/A	N/A	N/A	N/A	N/A	N/A	N/A	N/A	N/A	N/A
24 SQ	24x24	570	75	606	79	679	79	765	79	877	91	640 ^{A,C}	79	9	60	237	252
30 SQ	24x24	591	85	654	91	749	91	854	91	959	110	671 ^{A,C}	92	9	60	237	252
36 SQ	24x24	603	98	712	107	839	107	943	107	1,163	134	724 ^{A,B,C}	112	9	60	237	252
42 SQ	24x24	658	113	760	124	943	124	1,130	124	1,434	161	774 ^{A,B,C}	125	9	60	237	252
48 SQ	24x24	711	129	798	145	1,013	145	1,221	145	1,732	193	849 ^{A,B}	145	9	60	237	252
24x30	24x24	608	80	628	85	718	85	811	85	895	100	643 ^{A,C}	85	9	60	237	252
24x42	24x24	621	89	654	96	795	96	870	96	1,023	117	659 ^A	96	9	60	237	252
24x48	24x24	638	93	687	101	835	101	962	101	1,094	125	668 ^A	101	9	60	237	252
24x60	24x24 +	997	159	1,092	169	1,390	169	1,453	169	1,584	199	N/A	N/A	18	119	473	505
30x42	24x24	624	97	687	105	824	105	947	105	1,141	131	677 ^A	106	9	60	237	252
30x48	24x24	647	102	725	112	879	112	1,013	112	1,234	142	687 ^{A,C}	112	9	60	237	252
30x60	24x24+	1,016	171	1,131	183	1,407	183	1,611	183	1,791	220	1,062 ^A	183	18	119	473	505
30x72	24x24 +	1,098	182	1,224	197	1,502	197	1,729	197	2,229	242	1,108 ^A	197	18	119	473	505
36x48	24x24	679	111	867	123	925	123	1,109	123	1,413	159	N/A	N/A	9	60	237	252
36x60	24x24 +	1,104	182	1,337	196	1,411	196	1,641	196	2,021	242	N/A	N/A	18	119	473	505
36x72	24x24 +	1,190	195	1,468	213	1,558	213	1,832	213	2,290	267	N/A	N/A	18	119	473	505

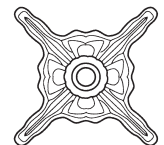
* = Denotes available as Drop Leaf top + = 2 bases per top included Cast iron column **A** = 41111 **B** = 41333 **C** = 41120

DROP LEAF

Top Size (Inches)	Base Size (Inches)	List Price	Apprx WT	List Price	Apprx WT	List Price	Apprx WT	List Price	Apprx WT	List Price	Apprx WT	List Price	Apprx WT	Metal Upcharge Grades 2/3/PC/SC			
36 SQ - 51 RD	24x24	1,211	153	2,379	173	2,906	173	3,314	173	3,280	233	N/A	N/A	9	60	237	252
42 SQ - 60 RD	N/A	N/A	N/A	N/A	N/A	N/A	N/A	N/A	N/A	N/A	N/A	N/A	N/A	N/A	N/A	N/A	N/A

HOW TO BUILD YOUR TABLE MODEL NUMBER:

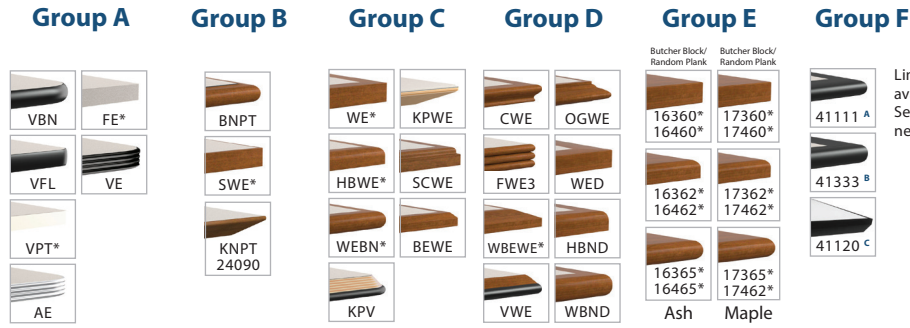
B81 series table base with WE edge profile
 B81 plus edge profile number = **B81-WE**



24x24

NOTES:

- Pricing is for complete table.
- Use the next largest table price for intermediate table sizes.
- All prices are list, FOB factory.
- All prices are Grade 1 Laminate, Black Wrinkle, Maple species, standard wood finishes, and shipped unassembled.
- Maple species is standard. Oak species available for the same price (specify on order). Additional species also available, call for pricing.
- See Edge details in the Tables introduction section *Tables- Edge Profiles*.



Limited sizes available. See A,B,C next to price.

PC = Polished Chrome SC = Satin Chrome

Top Size (Inches)	Base Size (Inches)	List Price	Apprx WT	List Price	Apprx WT	List Price	Apprx WT	List Price	Apprx WT	List Price	Apprx WT	List Price	Apprx WT	Metal Upcharge Grades 2/3/PC/SC				
30 RD	N/A	N/A	N/A	N/A	N/A	N/A	N/A	N/A	N/A	N/A	N/A	N/A	N/A	N/A	N/A	N/A	N/A	N/A
36 RD	CS	1,155	83	1,436	92	1,630	92	1,886	92	1,937	119	1,262 ^{A,B,C}	92	N/A	N/A	N/A	N/A	
42 RD	CS	1,213	98	1,510	109	1,750	109	1,998	109	2,054	146	1,328 ^{A,B,C}	110	10	10	195	N/A	
48 RD	SS/CS	1,270	114	1,566	130	1,817	130	2,089	130	2,329	178	1,362 ^{A,B,C}	130	10	10	195	N/A	
60 RD	SS/CS	1,508	155	1,964	180	2,294	180	2,660	180	3,093	255	1,596 ^A	180	10	10	195	N/A	
24 SQ	N/A	N/A	N/A	N/A	N/A	N/A	N/A	N/A	N/A	N/A	N/A	N/A	N/A	10	10	195	N/A	
30 SQ	CS	1,133	70	1,193	76	1,289	76	1,394	76	1,501	95	1,210 ^{A,C}	77	N/A	N/A	N/A	N/A	
36 SQ	SS/CS	1,141	83	1,253	92	1,379	92	1,482	92	1,705	119	1,262 ^{A,B,C}	97	10	10	195	N/A	
42 SQ	SS/CS	1,196	98	1,299	109	1,482	109	1,669	109	1,975	146	1,313 ^{A,B,C}	110	10	10	195	N/A	
48 SQ	SS/CS	1,252	114	1,339	130	1,553	130	1,762	130	2,272	178	1,388 ^{A,B}	130	10	10	195	N/A	
24x30	N/A	N/A	N/A	N/A	N/A	N/A	N/A	N/A	N/A	N/A	N/A	N/A	N/A	10	10	195	N/A	
24x42	N/A	N/A	N/A	N/A	N/A	N/A	N/A	N/A	N/A	N/A	N/A	N/A	N/A	N/A	N/A	N/A	N/A	
24x48	N/A	N/A	N/A	N/A	N/A	N/A	N/A	N/A	N/A	N/A	N/A	N/A	N/A	N/A	N/A	N/A	N/A	
24x60	N/A	N/A	N/A	N/A	N/A	N/A	N/A	N/A	N/A	N/A	N/A	N/A	N/A	N/A	N/A	N/A	N/A	
30x42	CS	1,163	82	1,226	90	1,364	90	1,486	90	1,681	116	1,215 ^A	91	N/A	N/A	N/A	N/A	
30x48	CS	1,188	87	1,265	97	1,419	97	1,553	97	1,772	127	1,226 ^{A,C}	97	10	10	195	N/A	
30x60	CS	1,215	99	1,329	111	1,605	111	1,810	111	1,991	148	1,261 ^A	111	10	10	195	N/A	
30x72	CS	1,297	110	1,424	125	1,700	125	1,928	125	2,427	170	1,306 ^A	125	10	10	195	N/A	
36x48	SS/CS	1,218	96	1,407	108	1,465	108	1,649	108	1,953	144	N/A	N/A	10	10	195	N/A	
36x60	SS/CS	1,303	110	1,534	124	1,610	124	1,839	124	2,220	170	N/A	N/A	10	10	195	N/A	
36x72	SS/CS	1,389	123	1,666	141	1,758	141	2,032	141	2,489	195	N/A	N/A	10	10	195	N/A	

* = Denotes available as Drop Leaf top SS = Standard Spider CS = Corner Spider 4 bases per top included A = 41111 B = 41333 C = 41120

DROP LEAF

Top Size (Inches)	Base Size (Inches)	List Price	Apprx WT	List Price	Apprx WT	List Price	Apprx WT	List Price	Apprx WT	List Price	Apprx WT	List Price	Apprx WT	Metal Upcharge Grades 2/3/PC/SC				
36 SQ - 51 RD	N/A	N/A	N/A	N/A	N/A	N/A	N/A	N/A	N/A	N/A	N/A	N/A	N/A	N/A	N/A	N/A	N/A	N/A
42 SQ - 60 RD	N/A	N/A	N/A	N/A	N/A	N/A	N/A	N/A	N/A	N/A	N/A	N/A	N/A	N/A	N/A	N/A	N/A	N/A

HOW TO BUILD YOUR TABLE MODEL NUMBER:

PL67 series table base with 13000 table top
 PL67 plus edge profile number = **PL67-13000**
 Specify **SS (standard spider)** or **CS (corner spider)** when optional



PL67 5"

NOTES:

- Pricing is for complete table.
- Use the next largest table price for intermediate table sizes.
- All prices are list, FOB factory.
- All prices are Grade 1 Laminate, Black Wrinkle, Maple species, standard wood finishes, and shipped unassembled.
- Maple species is standard. Oak species available for the same price (specify on order). Additional species also available, call for pricing.
- See Edge details in the Tables introduction section *Tables- Edge Profiles*.



Shown with **WEBN** Top
30.25" Overall Table Height
30.5" Overall Table Height,
 Group E Only

Group A

Group B

Group C

Group D

Group E

Butcher Block/Random Plank

Ash Maple

Group F

Limited sizes available. See A,B,C next to price.

PC = Polished Chrome SC = Satin Chrome

Top Size (Inches)	Base Size (Inches)	List Price	Apprx WT	List Price	Apprx WT	List Price	Apprx WT	List Price	Apprx WT	List Price	Apprx WT	List Price	Apprx WT	Metal Upcharge Grades 2/3/PC/SC			
30 RD	16 RD	442	60	542	65	859	65	1,042	65	1,085	84	486 ^A	66	39	86	N/A	N/A
36 RD	22 RD	514	85	795	94	989	94	1,245	94	1,297	121	622 ^{A,B,C}	94	42	127	N/A	N/A
42 RD	30 RD	777	141	1,074	152	1,313	152	1,562	152	1,618	189	893 ^{A,B,C}	153	48	144	N/A	N/A
48 RD	30 RD	833	157	1,131	173	1,380	173	1,652	173	1,892	221	928 ^{A,B,C}	173	48	144	N/A	N/A
60 RD	30 RD	1,072	198	1,527	223	1,858	223	2,223	223	2,658	298	1,160 ^A	223	48	144	N/A	N/A
24 SQ	16 RD	407	49	442	53	517	53	604	53	714	65	478 ^{A,C}	53	38	84	N/A	N/A
30 SQ	22 RD	491	72	552	78	648	78	752	78	859	97	570 ^{A,C}	79	42	127	N/A	N/A
36 SQ	22 RD	501	85	611	94	737	94	842	94	1,062	121	622 ^{A,B,C}	99	42	127	N/A	N/A
42 SQ	30 RD	761	141	863	152	1,046	152	1,232	152	1,538	189	877 ^{A,B,C}	153	48	144	N/A	N/A
48 SQ	30 RD	816	157	902	173	1,116	173	1,325	173	1,837	221	951 ^{A,B}	173	48	144	N/A	N/A
24x30	16 RD	446	54	466	59	555	59	648	59	732	74	481 ^{A,C}	59	39	86	N/A	N/A
24x42	5x22 +	602	78	632	85	776	85	850	85	1,002	106	639 ^A	85	79	189	N/A	N/A
24x48	5x22 +	616	82	667	90	816	90	943	90	1,073	114	647 ^A	90	79	189	N/A	N/A
24x60	5x22 +	636	91	729	101	1,027	101	1,093	101	1,222	131	N/A	N/A	79	189	N/A	N/A
30x42	5x22 +	605	86	667	94	804	94	927	94	1,121	120	656 ^A	95	79	189	N/A	N/A
30x48	5x22 +	627	91	703	101	859	101	992	101	1,213	131	667 ^{A,C}	101	79	189	N/A	N/A
30x60	5x22 +	655	103	770	115	1,044	115	1,251	115	1,429	152	702 ^A	115	79	189	N/A	N/A
30x72	5x22 +	737	114	864	129	1,139	129	1,367	129	1,867	174	746 ^A	129	79	189	N/A	N/A
36x48	5x22 +	659	100	846	112	903	112	1,090	112	1,393	148	N/A	N/A	79	189	N/A	N/A
36x60	5x22 +	743	114	976	128	1,051	128	1,278	128	1,661	174	N/A	N/A	79	189	N/A	N/A
36x72	5x22 +	828	127	1,105	145	1,196	145	1,471	145	1,928	199	N/A	N/A	79	189	N/A	N/A

* = Denotes available as Drop Leaf top + = 2 bases per top included

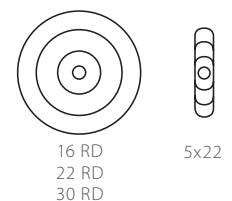
A = 41111 B = 41333 C = 41120

DROP LEAF

Top Size (Inches)	Base Size (Inches)	List Price	Apprx WT	List Price	Apprx WT	List Price	Apprx WT	List Price	Apprx WT	List Price	Apprx WT	List Price	Apprx WT	Metal Upcharge Grades 2/3/PC/SC			
36 SQ - 51 RD	30 RD	1,313	181	2,484	201	3,010	201	3,417	201	3,385	261	N/A	N/A	9	60	237	252
42 SQ - 60 RD	30 RD	1,471	204	2,750	229	3,128	229	3,565	229	4,461	304	N/A	N/A	N/A	N/A	N/A	N/A

HOW TO BUILD YOUR TABLE MODEL NUMBER:

B85 series table base with WEBN edge profile
 B85 plus edge profile number = **B85-WEBN**



NOTES:

- Pricing is for complete table.
- Use the next largest table price for intermediate table sizes.
- All prices are list, FOB factory.
- All prices are Grade 1 Laminate, Black Wrinkle, Maple species, standard wood finishes, and shipped unassembled.
- Maple species is standard. Oak species available for the same price (specify on order). Additional species also available, call for pricing.
- See Edge details in the Tables introduction section *Tables—Edge Profiles*.



Shown with **VBN** Top
28.75" Overall Table Height
29" Overall Table Height,
 Group E Only

Group A

Group B

Group C

Group D

Group E

Group F

Limited sizes available. See A,B,C next to price.

PC = Polished Chrome SC = Satin Chrome

Top Size (Inches)	Base Size (Inches)	List Price	Apprx WT	List Price	Apprx WT	List Price	Apprx WT	List Price	Apprx WT	List Price	Apprx WT	List Price	Apprx WT	Metal Upcharge Grades 2/3/PC/SC			
30 RD	24x24	469	53	570	58	886	58	1,069	58	1,112	77	514 ^A	59	5	39	92	152
36 RD	32x32	535	71	818	80	1,012	80	1,268	80	1,317	107	644 ^{A,B,C}	80	7	66	101	195
42 RD	32x32	592	86	891	97	1,132	97	1,379	97	1,434	134	711 ^{A,B,C}	98	7	66	101	195
48 RD	32x32	650	102	947	118	1,197	118	1,470	118	1,710	166	744 ^{A,B,C}	118	7	66	101	195
60 RD	2x18 [^]	1,236	149	1,690	174	2,022	174	2,387	174	2,821	249	1,323 ^A	174	7	168	231	414
24 SQ	18x18	390	33	426	37	501	37	586	37	698	49	462 ^{A,C}	37	3	33	64	123
30 SQ	24x24	458	52	519	58	615	58	721	58	825	77	536 ^{A,C}	59	5	39	92	152
36 SQ	32x32	523	71	632	80	761	80	864	80	1,084	107	644 ^{A,B,C}	85	7	66	101	195
42 SQ	32x32	577	86	680	97	864	97	1,050	97	1,356	134	694 ^{A,B,C}	98	7	55	101	195
48 SQ	N/A	N/A	N/A	N/A	N/A	N/A	N/A	N/A	N/A	N/A	N/A	N/A	N/A	N/A	N/A	N/A	N/A
24x30	24x24	473	47	493	52	581	52	675	52	761	67	508 ^{A,C}	52	5	39	92	152
24x42	2x22 ⁺	556	62	588	69	730	69	806	69	957	90	595 ^A	69	3	84	119	215
24x48	2x22 ⁺	572	66	622	74	771	74	898	74	1,027	98	603 ^A	74	3	84	119	215
24x60	2x22 ⁺	590	75	685	85	983	85	1,047	85	1,179	115	N/A	N/A	3	84	119	215
30x42	2x28 ⁺	644	84	707	92	844	92	966	92	1,161	118	696 ^A	93	5	109	146	241
30x48	2x28 ⁺	668	89	745	99	900	99	1,034	99	1,253	129	708 ^{A,C}	99	5	109	146	241
30x60	2x28 ⁺	694	101	809	113	1,085	113	1,292	113	1,471	150	742 ^A	113	5	109	146	241
30x72	2x28 ⁺	778	112	903	127	1,181	127	1,409	127	1,907	172	787 ^A	127	5	109	146	241
36x48	2x28 ⁺	699	98	887	110	945	110	1,131	110	1,433	146	N/A	N/A	5	109	146	241
36x60	2x28 ⁺	783	112	1,016	126	1,092	126	1,320	126	1,702	172	N/A	N/A	5	109	146	241
36x72	2x28 ⁺	869	125	1,148	143	1,237	143	1,512	143	1,969	197	N/A	N/A	5	109	146	241

* = Denotes available as Drop Leaf top + = 2 bases per top included ^ = 4 bases per top included A = 41111 B = 41333 C = 41120

s = 15" cast iron spider included

DROP LEAF

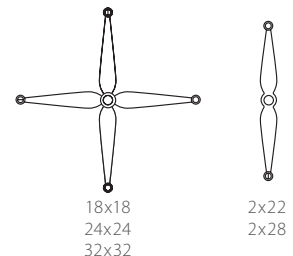
Top Size (Inches)	Base Size (Inches)	List Price	Apprx WT	List Price	Apprx WT	List Price	Apprx WT	List Price	Apprx WT	List Price	Apprx WT	List Price	Apprx WT	Metal Upcharge Grades 2/3/PC/SC			
36 SQ - 51 RD	N/A	N/A	N/A	N/A	N/A	N/A	N/A	N/A	N/A	N/A	N/A	N/A	N/A	N/A	N/A	N/A	N/A
42 SQ - 60 RD	N/A	N/A	N/A	N/A	N/A	N/A	N/A	N/A	N/A	N/A	N/A	N/A	N/A	N/A	N/A	N/A	N/A

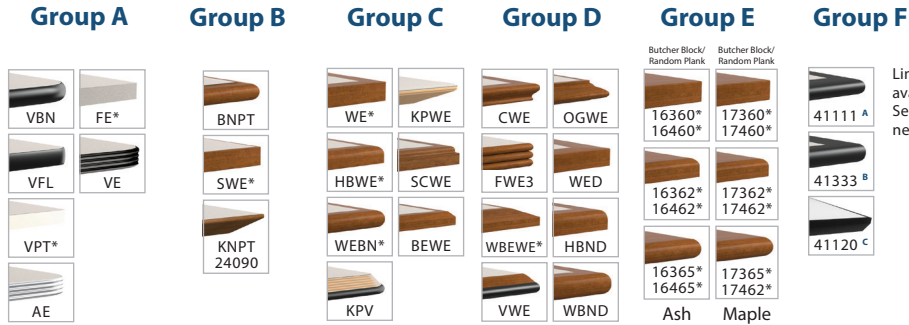
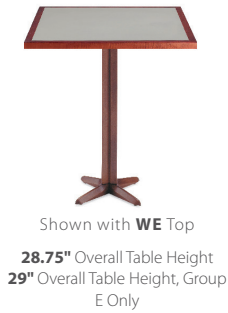
HOW TO BUILD YOUR TABLE MODEL NUMBER:

B90 series table base with VBN edge profile
 B90 plus edge profile number = **B90-VBN**

NOTES:

- Pricing is for complete table.
- Use the next largest table price for intermediate table sizes.
- All prices are list, FOB factory.
- All prices are Grade 1 Laminate, Black Wrinkle, Maple species, standard wood finishes, and shipped unassembled.
- Maple species is standard. Oak species available for the same price (specify on order). Additional species also available, call for pricing.
- See Edge details in the Tables introduction section *Tables - Edge Profiles*.





Limited sizes available. See A,B,C next to price.

PC = Polished Chrome SC = Satin Chrome

Top Size (Inches)	Base Size (Inches)	List Price	Apprx WT	List Price	Apprx WT	List Price	Apprx WT	List Price	Apprx WT	List Price	Apprx WT	List Price	Apprx WT	Metal Upcharge Grades 2/3/PC/SC			
30 RD	22x22	954	55	1,053	60	1,369	60	1,554	60	1,597	79	997 ^A	61	N/A	N/A	N/A	N/A
36 RD	26x26	997	69	1,278	78	1,473	78	1,729	78	1,779	105	1,105 ^{A,B,C}	78	N/A	N/A	N/A	N/A
42 RD	30x30	1,085	85	1,383	96	1,624	96	1,872	96	1,926	133	1,201 ^{A,B,C}	97	N/A	N/A	N/A	N/A
48 RD	30x30	1,142	101	1,439	117	1,688	117	1,962	117	2,202	165	1,235 ^{A,B,C}	117	N/A	N/A	N/A	N/A
60 RD	40x40	1,591	159	2,047	184	2,377	184	2,743	184	3,176	259	1,680 ^A	184	N/A	N/A	N/A	N/A
24 SQ	18x18	691	41	727	45	801	45	887	45	998	57	763 ^{A,C}	45	N/A	N/A	N/A	N/A
30 SQ	22x22	941	54	1,002	60	1,099	60	1,203	60	1,309	79	1,020 ^{A,C}	61	N/A	N/A	N/A	N/A
36 SQ	26x26	984	69	1,096	78	1,221	78	1,325	78	1,547	105	1,105 ^{A,B,C}	83	N/A	N/A	N/A	N/A
42 SQ	30x30	1,069	85	1,172	96	1,356	96	1,541	96	1,847	133	1,187 ^{A,B,C}	97	N/A	N/A	N/A	N/A
48 SQ	30x30	1,124	101	1,212	117	1,426	117	1,634	117	2,145	165	1,261 ^{A,B}	117	N/A	N/A	N/A	N/A
24x30	22x22	956	49	978	54	1,065	54	1,159	54	1,244	69	991 ^{A,C}	54	N/A	N/A	N/A	N/A
24x42	22x30	987	60	1,020	67	1,161	67	1,237	67	1,390	88	1,025 ^A	67	N/A	N/A	N/A	N/A
24x48	22x30	1,003	64	1,053	72	1,200	72	1,329	72	1,459	96	1,033 ^A	72	N/A	N/A	N/A	N/A
24x60	18x18 +	1,241	91	1,335	101	1,632	101	1,697	101	1,828	131	N/A	N/A	N/A	N/A	N/A	N/A
30x42	22x30	991	68	1,053	76	1,191	76	1,313	76	1,508	102	1,042 ^A	77	N/A	N/A	N/A	N/A
30x48	22x30	1,014	73	1,092	83	1,246	83	1,379	83	1,600	113	1,053 ^{A,C}	83	N/A	N/A	N/A	N/A
30x60	22x22 +	1,714	109	1,829	121	2,104	121	2,309	121	2,490	158	1,760 ^A	121	N/A	N/A	N/A	N/A
30x72	22x22 +	1,796	120	1,923	135	2,199	135	2,427	135	2,926	180	1,805 ^A	135	N/A	N/A	N/A	N/A
36x48	30x30	1,093	83	1,278	95	1,338	95	1,523	95	1,827	131	N/A	N/A	N/A	N/A	N/A	N/A
36x60	26x26 +	1,869	124	2,100	138	2,177	138	2,406	138	2,786	184	N/A	N/A	N/A	N/A	N/A	N/A
36x72	26x26 +	1,954	137	2,232	155	2,322	155	2,598	155	3,053	209	N/A	N/A	N/A	N/A	N/A	N/A

* = Denotes available as Drop Leaf top + = 2 bases per top included

A = 41111 B = 41333 C = 41120

DROP LEAF

Wood column and base. Specify Maple or Oak species

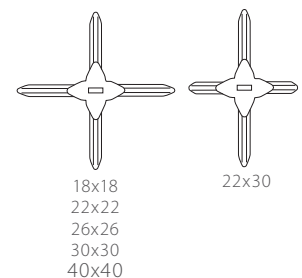
Top Size (Inches)	Base Size (Inches)	List Price	Apprx WT	List Price	Apprx WT	List Price	Apprx WT	List Price	Apprx WT	List Price	Apprx WT	List Price	Apprx WT	Metal Upcharge Grades 2/3/PC/SC			
36 SQ - 51 RD	40x40	1,834	142	3,002	162	3,530	162	3,938	162	3,904	222	N/A	N/A	N/A	N/A	N/A	N/A
42 SQ - 60 RD	40x40	1,991	165	3,270	190	3,647	190	4,084	190	4,979	265	N/A	N/A	N/A	N/A	N/A	N/A

HOW TO BUILD YOUR TABLE MODEL NUMBER:

B93 series table base with WE edge profile
 B93 plus edge profile number = **B93-WE**

NOTES:

- Pricing is for complete table.
- Use the next largest table price for intermediate table sizes.
- All prices are list, FOB factory.
- All prices are Grade 1 Laminated, Black Wrinkle, Maple species, standard wood finishes, and shipped unassembled.
- Maple species is standard. Oak species available for the same price (specify on order). Additional species also available, call for pricing.
- See Edge details in the Tables introduction section *Tables—Edge Profiles*.





Shown with 41111 Top
29.5" Overall Table Height
29.75" Overall Table Height,
Group E Only

Group A

Group B

Group C

Group D

Group E

Ash Maple

Group F

Limited sizes available. See A,B,C next to price.

PC = Polished Chrome SC = Satin Chrome

Top Size (Inches)	Base Size (Inches)	List Price	Apprx WT	List Price	Apprx WT	List Price	Apprx WT	List Price	Apprx WT	List Price	Apprx WT	List Price	Apprx WT	Metal Upcharge Grades 2/3/PC/SC			
30 RD	18 RD	545	56	645	61	961	61	1,146	61	1,190	80	589 ^A	62	12	N/A	N/A	N/A
36 RD	22 RD	582	78	865	87	1,059	87	1,313	87	1,365	114	690 ^{A,B,C}	87	17	N/A	N/A	N/A
42 RD	28 RD	791	113	1,091	124	1,330	124	1,576	124	1,633	161	908 ^{A,B,C}	125	27	N/A	N/A	N/A
48 RD	28 RD	849	129	1,146	145	1,396	145	1,669	145	1,909	193	943 ^{A,B,C}	145	27	N/A	N/A	N/A
60 RD	28 RD	1,089	170	1,544	195	1,875	195	2,239	195	2,672	270	1,177 ^A	195	27	N/A	N/A	N/A
24 SQ	18 RD	510	45	545	49	620	49	706	49	818	61	581 ^{A,C}	49	12	N/A	N/A	N/A
30 SQ	18 RD	533	55	595	61	691	61	795	61	901	80	612 ^{A,C}	62	12	N/A	N/A	N/A
36 SQ	22 RD	570	78	680	87	807	87	909	87	1,132	114	690 ^{A,B,C}	92	17	N/A	N/A	N/A
42 SQ	28 RD	777	113	878	124	1,062	124	1,248	124	1,555	161	894 ^{A,B,C}	125	27	N/A	N/A	N/A
48 SQ	28 RD	831	129	919	145	1,133	145	1,341	145	1,853	193	969 ^{A,B}	145	27	N/A	N/A	N/A
24x30	18 RD	549	50	570	55	659	55	751	55	836	70	584 ^{A,C}	55	12	N/A	N/A	N/A
24x42	22 RD	588	69	621	76	764	76	838	76	991	97	627 ^A	76	17	N/A	N/A	N/A
24x48	18 RD +	860	90	909	98	1,059	98	1,187	98	1,315	122	891 ^A	98	27	N/A	N/A	N/A
24x60	18 RD +	879	99	974	109	1,271	109	1,336	109	1,467	139	N/A	N/A	27	N/A	N/A	N/A
30x42	22 RD	590	77	655	85	790	85	915	85	1,109	111	644 ^A	86	17	N/A	N/A	N/A
30x48	18 RD +	870	99	947	109	1,103	109	1,236	109	1,456	139	909 ^{A,C}	109	27	N/A	N/A	N/A
30x60	18 RD +	898	111	1,013	123	1,288	123	1,494	123	1,673	160	945 ^A	123	27	N/A	N/A	N/A
30x72	18 RD +	981	122	1,106	137	1,383	137	1,611	137	2,110	182	990 ^A	137	27	N/A	N/A	N/A
36x48	28 RD	798	111	986	123	1,043	123	1,229	123	1,532	159	N/A	N/A	27	N/A	N/A	N/A
36x60	22 RD +	1,039	122	1,271	136	1,347	136	1,575	136	1,956	182	N/A	N/A	52	N/A	N/A	N/A
36x72	22 RD +	1,124	135	1,402	153	1,492	153	1,768	153	2,224	207	N/A	N/A	52	N/A	N/A	N/A

* = Denotes available as Drop Leaf top + = 2 bases per top included

A = 41111 B = 41333 C = 41120

DROP LEAF

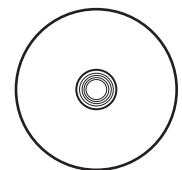
Top Size (Inches)	Base Size (Inches)	List Price	Apprx WT	List Price	Apprx WT	List Price	Apprx WT	List Price	Apprx WT	List Price	Apprx WT	List Price	Apprx WT	Metal Upcharge Grades 2/3/PC/SC			
36 SQ - 51 RD	28 RD	1,330	153	2,499	173	3,025	173	3,435	173	3,400	233	N/A	N/A	27	N/A	N/A	N/A
42 SQ - 60 RD	28 RD	1,486	176	2,765	201	3,143	201	3,582	201	4,476	276	N/A	N/A	27	N/A	N/A	N/A

HOW TO BUILD YOUR TABLE MODEL NUMBER:

B95 series table base with 41111 edge profile
B95 plus edge profile number = **B95-41111**

NOTES:

- Pricing is for complete table.
- Use the next largest table price for intermediate table sizes.
- All prices are list, FOB factory.
- All prices are Grade 1 Laminate, Black Wrinkle, Maple species, standard wood finishes, and shipped unassembled.
- Maple species is standard. Oak species available for the same price (specify on order). Additional species also available, call for pricing.
- See Edge details in the Tables introduction section *Tables- Edge Profiles*.



18 RD
22 RD
28 RD



Shown with **WBEWE** Top
29" Overall Table Height
29.25" Overall Table Height,
 Group E Only

Group A

Group B

Group C

Group D

Group E

Butcher Block/
Random Plank

Ash Maple

Group F

Limited sizes available. See A,B,C next to price.

PC = Polished Chrome SC = Satin Chrome

Top Size (Inches)	Base Size (Inches)	List Price	Apprx WT	List Price	Apprx WT	List Price	Apprx WT	List Price	Apprx WT	List Price	Apprx WT	List Price	Apprx WT	Metal Upcharge Grades 2/3/PC/SC			
30 RD	18 RD	866	59	965	64	1,281	64	1,466	64	1,509	83	908 ^A	65	12	N/A	N/A	N/A
36 RD	22 RD	939	81	1,221	90	1,416	90	1,672	90	1,722	117	1,047 ^{A,B,C}	90	18	N/A	N/A	N/A
42 RD	28 RD	1,160	116	1,458	127	1,699	127	1,945	127	2,002	164	1,276 ^{A,B,C}	128	21	N/A	N/A	N/A
48 RD	28 RD	1,218	132	1,514	148	1,765	148	2,037	148	2,278	196	1,311 ^{A,B,C}	148	21	N/A	N/A	N/A
60 RD	N/A	N/A	N/A	N/A	N/A	N/A	N/A	N/A	N/A	N/A	N/A	N/A ^A	N/A	N/A	N/A	N/A	N/A
24 SQ	18 RD	830	48	866	52	939	52	1,026	52	1,138	64	900 ^{A,C}	52	12	N/A	N/A	N/A
30 SQ	18 RD	853	58	915	64	1,011	64	1,114	64	1,220	83	931 ^{A,C}	65	12	N/A	N/A	N/A
36 SQ	22 RD	927	81	1,037	90	1,163	90	1,268	90	1,487	117	1,047 ^{A,B,C}	95	18	N/A	N/A	N/A
42 SQ	28 RD	1,144	116	1,247	127	1,430	127	1,616	127	1,923	164	1,261 ^{A,B,C}	128	21	N/A	N/A	N/A
48 SQ	28 RD	1,199	132	1,287	148	1,502	148	1,710	148	2,222	196	1,337 ^{A,B}	148	21	N/A	N/A	N/A
24x30	18 RD	869	53	889	58	978	58	1,072	58	1,156	73	903 ^{A,C}	58	12	N/A	N/A	N/A
24x42	22 RD	946	72	979	79	1,120	79	1,195	79	1,348	100	984 ^A	79	18	N/A	N/A	N/A
24x48	18 RD +	1,501	96	1,550	104	1,697	104	1,826	104	1,955	128	1,528 ^A	104	27	N/A	N/A	N/A
24x60	18 RD +	1,518	105	1,612	115	1,911	115	1,975	115	2,105	145	N/A	N/A	27	N/A	N/A	N/A
30x42	22 RD	948	120	1,012	128	1,149	128	1,271	128	1,467	154	1,000 ^A	129	18	N/A	N/A	N/A
30x48	28 RD	1,136	105	1,213	115	1,367	115	1,502	115	1,721	145	1,173 ^{A,C}	115	21	N/A	N/A	N/A
30x60	18 RD +	1,536	117	1,652	129	1,928	129	2,134	129	2,312	166	1,583 ^A	129	27	N/A	N/A	N/A
30x72	18 RD +	1,620	128	1,746	143	2,022	143	2,251	143	2,750	188	1,629 ^A	143	27	N/A	N/A	N/A
36x48	28 RD	1,166	114	1,355	126	1,412	126	1,597	126	1,901	162	N/A	N/A	21	N/A	N/A	N/A
36x60	22 RD +	1,753	228	1,985	242	2,060	242	2,291	242	2,670	288	N/A	N/A	38	N/A	N/A	N/A
36x72	22 RD +	1,838	241	2,118	259	2,207	259	2,484	259	2,938	313	N/A	N/A	38	N/A	N/A	N/A

* = Denotes available as Drop Leaf top + = 2 bases per top included Wood column **A** = 41111 **B** = 41333 **C** = 41120

DROP LEAF

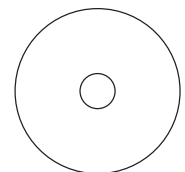
Top Size (Inches)	Base Size (Inches)	List Price	Apprx WT	List Price	Apprx WT	List Price	Apprx WT	List Price	Apprx WT	List Price	Apprx WT	List Price	Apprx WT	Metal Upcharge Grades 2/3/PC/SC			
36 SQ - 51 RD	N/A	N/A	N/A	N/A	N/A	N/A	N/A	N/A	N/A	N/A	N/A	N/A	N/A	N/A	N/A	N/A	N/A
42 SQ - 60 RD	N/A	N/A	N/A	N/A	N/A	N/A	N/A	N/A	N/A	N/A	N/A	N/A	N/A	N/A	N/A	N/A	N/A

HOW TO BUILD YOUR TABLE MODEL NUMBER:

69A5 series table base with WBEWE table top
 69A plus edge profile number = **69A-WBEWE**

NOTES:

- Pricing is for complete table.
- Use the next largest table price for intermediate table sizes.
- All prices are list, FOB factory.
- All prices are Grade 1 Laminated, Black Wrinkle, Maple species, standard wood finishes, and shipped unassembled.
- Maple species is standard. Oak species available for the same price (specify on order). Additional species also available, call for pricing.
- See Edge details in the Tables introduction section *Tables—Edge Profiles*.



18 RD
 22 RD
 28 RD



Shown with **KPWE** Top
 29" Overall Table Height
 29.25" Overall Table Height,
 Group E Only

Group A

Group B

Group C

Group D

Group E

Butcher Block/
Random Plank

Ash Maple

Group F

Limited sizes available. See A,B,C next to price.

PC = Polished Chrome SC = Satin Chrome

Top Size (Inches)	Base Size (Inches)	List Price	Apprx WT	List Price	Apprx WT	List Price	Apprx WT	List Price	Apprx WT	List Price	Apprx WT	List Price	Apprx WT	Metal Upcharge Grades 2/3/PC/SC			
30 RD	18 RD	798	59	897	64	1,214	64	1,397	64	1,442	83	842 ^A	65	12	N/A	N/A	N/A
36 RD	22 RD	871	81	1,154	90	1,348	90	1,603	90	1,654	117	980 ^{A,B,C}	90	18	N/A	N/A	N/A
42 RD	28 RD	1,090	116	1,387	127	1,627	127	1,875	127	1,930	164	1,204 ^{A,B,C}	128	21	N/A	N/A	N/A
48 RD	28 RD	1,146	132	1,443	148	1,691	148	1,965	148	2,204	196	1,239 ^{A,B,C}	148	21	N/A	N/A	N/A
60 RD	N/A	N/A	N/A	N/A	N/A	N/A	N/A	N/A	N/A	N/A	N/A	N/A	N/A	N/A	N/A	N/A	N/A
24 SQ	18 RD	763	48	798	52	871	52	957	52	1,069	64	833 ^{A,C}	52	12	N/A	N/A	N/A
30 SQ	18 RD	785	58	846	64	943	64	1,047	64	1,153	83	864 ^{A,C}	65	12	N/A	N/A	N/A
36 SQ	22 RD	859	81	969	90	1,096	90	1,199	90	1,420	117	980 ^{A,B,C}	95	18	N/A	N/A	N/A
42 SQ	28 RD	1,073	116	1,175	127	1,358	127	1,545	127	1,850	164	1,190 ^{A,B,C}	128	21	N/A	N/A	N/A
48 SQ	28 RD	1,129	132	1,215	148	1,428	148	1,637	148	2,149	196	1,263 ^{A,B}	148	21	N/A	N/A	N/A
24x30	18 RD	801	53	821	58	908	58	1,003	58	1,089	73	834 ^{A,C}	58	12	N/A	N/A	N/A
24x42	22 RD	877	72	909	79	1,052	79	1,129	79	1,278	100	915 ^A	79	18	N/A	N/A	N/A
24x48	18 RD +	1,364	96	1,413	104	1,562	104	1,688	104	1,820	128	1,394 ^A	104	27	N/A	N/A	N/A
24x60	18 RD +	1,383	105	1,476	115	1,775	115	1,838	115	1,969	145	N/A	N/A	27	N/A	N/A	N/A
30x42	22 RD	880	120	944	128	1,080	128	1,203	128	1,398	154	933 ^A	129	18	N/A	N/A	N/A
30x48	28 RD	1,063	105	1,140	115	1,297	115	1,428	115	1,649	145	1,102 ^{A,C}	115	21	N/A	N/A	N/A
30x60	18 RD +	1,401	117	1,515	129	1,792	129	1,997	129	2,177	166	1,448 ^A	129	27	N/A	N/A	N/A
30x72	18 RD +	1,483	128	1,610	143	1,886	143	2,115	143	2,614	188	1,493 ^A	143	27	N/A	N/A	N/A
36x48	28 RD	1,096	114	1,282	126	1,340	126	1,525	126	1,829	162	N/A	N/A	21	N/A	N/A	N/A
36x60	22 RD +	1,618	228	1,849	242	1,925	242	2,154	242	2,534	288	N/A	N/A	38	N/A	N/A	N/A
36x72	22 RD +	1,704	241	1,980	259	2,072	259	2,346	259	2,803	313	N/A	N/A	38	N/A	N/A	N/A

* = Denotes available as Drop Leaf top + = 2 bases per top included Wood column A = 41111 B = 41333 C = 41120

DROP LEAF

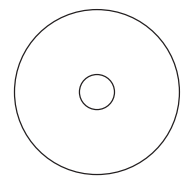
Top Size (Inches)	Base Size (Inches)	List Price	Apprx WT	List Price	Apprx WT	List Price	Apprx WT	List Price	Apprx WT	List Price	Apprx WT	List Price	Apprx WT	Metal Upcharge Grades 2/3/PC/SC			
36 SQ - 51 RD	N/A	N/A	N/A	N/A	N/A	N/A	N/A	N/A	N/A	N/A	N/A	N/A	N/A	N/A	N/A	N/A	N/A
42 SQ - 60 RD	N/A	N/A	N/A	N/A	N/A	N/A	N/A	N/A	N/A	N/A	N/A	N/A	N/A	N/A	N/A	N/A	N/A

HOW TO BUILD YOUR TABLE MODEL NUMBER:

69B5 series table base with KPWE table top
 69B plus edge profile number = **69B-KPWE**

NOTES:

- Pricing is for complete table.
- Use the next largest table price for intermediate table sizes.
- All prices are list, FOB factory.
- All prices are Grade 1 Laminate, Black Wrinkle, Maple species, standard wood finishes, and shipped unassembled.
- Maple species is standard. Oak species available for the same price (specify on order). Additional species also available, call for pricing.
- See Edge details in the Tables introduction section *Tables- Edge Profiles*.



18 RD
 22 RD
 28 RD



Shown with **KPWE** Top
29" Overall Table Height
29.25" Overall Table Height,
 Group E Only

Group A

Group B

Group C

Group D

Group E

Butcher Block/
Random Plank

Ash Maple

Group F

Limited sizes available. See A,B,C next to price.

PC = Polished Chrome SC = Satin Chrome

Top Size (Inches)	Base Size (Inches)	List Price	Apprx WT	List Price	Apprx WT	List Price	Apprx WT	List Price	Apprx WT	List Price	Apprx WT	List Price	Apprx WT	Metal Upcharge Grades 2/3/PC/SC			
30 RD	18 RD	567	64	666	69	982	69	1,165	69	1,210	88	610 ^A	70	16	N/A	N/A	N/A
36 RD	22 RD	641	86	923	95	1,116	95	1,371	95	1,423	122	747 ^{A,B,C}	95	24	N/A	N/A	N/A
42 RD	28 RD	859	111	1,156	122	1,397	122	1,645	122	1,702	159	977 ^{A,B,C}	123	33	N/A	N/A	N/A
48 RD	28 RD	917	127	1,213	143	1,463	143	1,735	143	1,976	191	1,009 ^{A,B,C}	143	33	N/A	N/A	N/A
60 RD	N/A	N/A	N/A	N/A	N/A	N/A	N/A	N/A	N/A	N/A	N/A	N/A	N/A	N/A	N/A	N/A	N/A
24 SQ	18 RD	530	53	567	57	641	57	727	57	838	69	602 ^{A,C}	57	16	N/A	N/A	N/A
30 SQ	18 RD	555	63	615	69	711	69	817	69	921	88	632 ^{A,C}	70	16	N/A	N/A	N/A
36 SQ	22 RD	627	86	737	95	865	95	968	95	1,190	122	747 ^{A,B,C}	100	24	N/A	N/A	N/A
42 SQ	28 RD	843	111	946	122	1,131	122	1,314	122	1,622	159	959 ^{A,B,C}	123	33	N/A	N/A	N/A
48 SQ	28 RD	898	127	985	143	1,199	143	1,409	143	1,920	191	1,035 ^{A,B}	143	33	N/A	N/A	N/A
24x30	18 RD	570	58	589	63	678	63	773	63	857	78	605 ^{A,C}	63	16	N/A	N/A	N/A
24x42	22 RD	646	77	679	84	821	84	896	84	1,048	105	685 ^A	84	24	N/A	N/A	N/A
24x48	18 RD +	901	106	951	114	1,099	114	1,226	114	1,357	138	932 ^A	114	34	N/A	N/A	N/A
24x60	18 RD +	921	115	1,014	125	1,312	125	1,375	125	1,507	155	N/A	N/A	34	N/A	N/A	N/A
30x42	22 RD	649	85	712	93	849	93	974	93	1,166	119	701 ^A	94	24	N/A	N/A	N/A
30x48	28 RD	834	100	910	110	1,066	110	1,199	110	1,419	140	873 ^{A,C}	110	33	N/A	N/A	N/A
30x60	18 RD +	938	127	1,053	139	1,329	139	1,533	139	1,714	176	986 ^A	139	34	N/A	N/A	N/A
30x72	18 RD +	1,021	138	1,148	153	1,424	153	1,652	153	2,151	198	1,031 ^A	153	34	N/A	N/A	N/A
36x48	28 RD	866	109	1,053	121	1,111	121	1,297	121	1,601	157	N/A	N/A	33	N/A	N/A	N/A
36x60	22 RD +	1,155	158	1,388	172	1,462	172	1,690	172	2,073	218	N/A	N/A	46	N/A	N/A	N/A
36x72	22 RD +	1,240	171	1,517	189	1,608	189	1,883	189	2,340	243	N/A	N/A	46	N/A	N/A	N/A

* = Denotes available as Drop Leaf top + = 2 bases per top included Cast iron column A = 41111 B = 41333 C = 41120

DROP LEAF

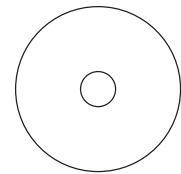
Top Size (Inches)	Base Size (Inches)	List Price	Apprx WT	List Price	Apprx WT	List Price	Apprx WT	List Price	Apprx WT	List Price	Apprx WT	List Price	Apprx WT	Metal Upcharge Grades 2/3/PC/SC			
36 SQ - 51 RD	N/A	N/A	N/A	N/A	N/A	N/A	N/A	N/A	N/A	N/A	N/A	N/A	N/A	N/A	N/A	N/A	N/A
42 SQ - 60 RD	N/A	N/A	N/A	N/A	N/A	N/A	N/A	N/A	N/A	N/A	N/A	N/A	N/A	N/A	N/A	N/A	N/A

HOW TO BUILD YOUR TABLE MODEL NUMBER:

69C5 series table base with KPWE table top
 69C plus edge profile number = **69C-KPWE**

NOTES:

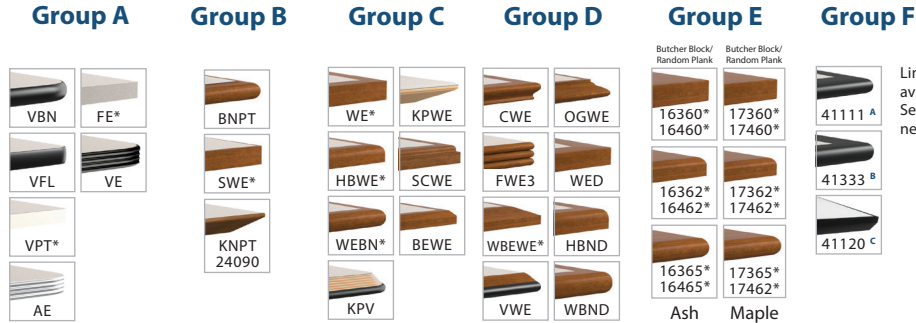
- Pricing is for complete table.
- Use the next largest table price for intermediate table sizes.
- All prices are list, FOB factory.
- All prices are Grade 1 Laminate, Black Wrinkle, Maple species, standard wood finishes, and shipped unassembled.
- Maple species is standard. Oak species available for the same price (specify on order). Additional species also available, call for pricing.
- See Edge details in the Tables introduction section *Tables- Edge Profiles*.



18 RD
 22 RD
 28 RD



Shown with **VBN** Top
28.75" Overall Table Height
29" Overall Table Height,
 Group E Only



Limited sizes available. See A,B,C next to price.

PC = Polished Chrome SC = Satin Chrome

Top Size (Inches)	Base Size (Inches)	List Price	Apprx WT	List Price	Apprx WT	List Price	Apprx WT	List Price	Apprx WT	List Price	Apprx WT	List Price	Apprx WT	Metal Upcharge Grades 2/3/PC/SC			
30 RD	18 RD	684	69	782	74	1,099	74	1,282	74	1,326	93	727 ^A	75	7	17	127	267
36 RD	22 RD	727	86	1,008	95	1,201	95	1,458	95	1,509	122	834 ^{A,B,C}	95	9	19	194	292
42 RD	22 RD	784	101	1,081	112	1,322	112	1,569	112	1,626	149	901 ^{A,B,C}	113	9	19	194	292
48 RD	26 RD	891	122	1,188	138	1,438	138	1,710	138	1,950	186	984 ^{A,B,C}	138	10	22	218	251
60 RD	N/A	N/A	N/A	N/A	N/A	N/A	N/A	N/A	N/A	N/A	N/A	N/A	N/A	N/A	N/A	N/A	N/A
24 SQ	18 RD	647	58	684	62	756	62	843	62	955	74	719 ^{A,C}	62	7	17	127	267
30 SQ	22 RD	697	68	759	74	855	74	958	74	1,065	93	782 ^{A,C}	75	9	19	194	292
36 SQ	22 RD	713	86	824	95	951	95	1,054	95	1,275	122	834 ^{A,B,C}	100	9	19	194	292
42 SQ	22 RD	768	101	870	112	1,054	112	1,240	112	1,547	149	886 ^{A,B,C}	113	9	19	194	292
48 SQ	26 RD	873	122	959	138	1,174	138	1,383	138	1,894	186	1,009 ^{A,B}	138	10	22	218	251
24x30	22 RD	721	68	740	73	828	73	923	73	1,007	88	754 ^{A,C}	73	9	19	194	292
24x42	N/A	N/A	N/A	N/A	N/A	N/A	N/A	N/A	N/A	N/A	N/A	N/A	N/A	N/A	N/A	N/A	N/A
24x48	N/A	N/A	N/A	N/A	N/A	N/A	N/A	N/A	N/A	N/A	N/A	N/A	N/A	N/A	N/A	N/A	N/A
24x60	18 RD +	1,154	125	1,247	135	1,546	135	1,610	135	1,740	165	N/A	N/A	14	36	256	534
30x42	N/A	N/A	N/A	N/A	N/A	N/A	N/A	N/A	N/A	N/A	N/A	N/A	N/A	N/A	N/A	N/A	N/A
30x48	26 RD	808	95	886	105	1,041	105	1,174	105	1,394	135	848 ^{A,C}	105	10	22	218	251
30x60	18 RD +	1,172	137	1,287	149	1,563	149	1,768	149	1,946	186	1,218 ^A	149	14	36	256	534
30x72	18 RD +	1,254	148	1,381	163	1,657	163	1,885	163	2,385	208	1,263 ^A	163	14	36	256	534
36x48	26 RD	841	104	1,027	116	1,085	116	1,270	116	1,574	152	N/A	N/A	10	22	218	251
36x60	22 RD +	1,327	158	1,560	172	1,634	172	1,863	172	2,244	218	N/A	N/A	18	39	385	583
36x72	22 RD +	1,412	171	1,689	189	1,780	189	2,055	189	2,512	243	N/A	N/A	18	39	385	583

* = Denotes available as Drop Leaf top + = 2 bases per top included Welded Steel base, shipped set up A = 41111 B = 41333 C = 41120

DROP LEAF

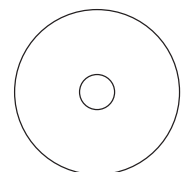
Top Size (Inches)	Base Size (Inches)	List Price	Apprx WT	List Price	Apprx WT	List Price	Apprx WT	List Price	Apprx WT	List Price	Apprx WT	List Price	Apprx WT	Metal Upcharge Grades 2/3/PC/SC			
36 SQ - 51 RD	26 RD	1,371	146	2,542	166	3,068	166	3,477	166	3,443	226	N/A	N/A	N/A	N/A	N/A	N/A
42 SQ - 60 RD	N/A	N/A	N/A	N/A	N/A	N/A	N/A	N/A	N/A	N/A	N/A	N/A	N/A	N/A	N/A	N/A	N/A

HOW TO BUILD YOUR TABLE MODEL NUMBER:

J11 series table base with VBN edge profile
 J11 plus edge profile number = **J11-VBN**

NOTES:

- Pricing is for complete table.
- Use the next largest table price for intermediate table sizes.
- All prices are list, FOB factory.
- All prices are Grade 1 Laminate, Black Wrinkle, Maple species, standard wood finishes, and shipped unassembled.
- Maple species is standard. Oak species available for the same price (specify on order). Additional species also available, call for pricing.
- See Edge details in the Tables introduction section *Tables- Edge Profiles*.



18 RD
 22 RD
 26 RD



Shown with **WEBN** Top
41.75" Overall Table Height
42" Overall Table Height, Group E Only
 E Only

Group A

Group B

Group C

Group D

Group E

Group F

Limited sizes available. See A,B,C next to price.

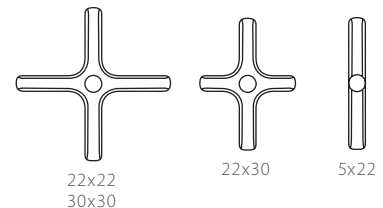
PC = Polished Chrome SC = Satin Chrome

Top Size (Inches)	Base Size (Inches)	Group A		Group B		Group C		Group D		Group E		Group F		Metal Upcharge Grades 2/3/PC/SC			
		List Price	Apprx WT	List Price	Apprx WT	List Price	Apprx WT	List Price	Apprx WT	List Price	Apprx WT	List Price	Apprx WT				
24 RD	22x22 o	395	39	454	43	773	43	924	43	960	55	429 ^A	43	76	144	212	299
30 RD	22x22 o	417	50	518	55	834	55	1,017	55	1,061	74	461 ^A	56	76	144	212	299
36 RD	30x30 o	448	67	729	76	924	76	1,180	76	1,230	103	556 ^{A,B,C}	76	79	168	238	316
24 SQ	22x22 o	382	39	417	43	492	43	579	43	690	55	453 ^{A,C}	43	76	144	212	299
30 SQ	22x22 o	406	49	467	55	563	55	668	55	773	74	483 ^{A,C}	56	76	144	212	299
36 SQ	30x30 o	434	67	545	76	671	76	776	76	996	103	556 ^{A,B,C}	81	79	168	238	316
24x30	22x22 o	422	44	441	49	529	49	624	49	708	64	456 ^{A,C}	49	76	144	212	299
30x48	5x22 +	579	78	656	88	811	88	944	88	1,163	118	615 ^{A,C}	88	91	198	288	380
30x60	5x22 +	607	90	721	102	996	102	1,200	102	1,381	139	651 ^A	102	91	198	288	380
30x72	5x22 + s	732	101	859	116	1,136	116	1,364	116	1,863	161	740 ^A	116	91	198	288	380
36x48	5x22 +	622	87	809	99	868	99	1,052	99	1,357	135	N/A	N/A	91	198	288	380
36x60	22x30 +	760	115	991	129	1,066	129	1,297	129	1,677	175	N/A	N/A	155	323	456	611
36x72	22x30 + s	877	128	1,155	146	1,245	146	1,520	146	1,977	200	N/A	N/A	155	323	456	611

+ = 2 bases per top included s = 15" cast iron spider included o = Footring available. Add \$223

HOW TO BUILD YOUR TABLE MODEL NUMBER:

B10 series table base with WEBN table top
 B10 plus edge profile number = **STUB10-WEBN**
 With footring = **SFB10-WEBN**



NOTES:

- Pricing is for complete table.
- Use the next largest table price for intermediate table sizes.
- All prices are list, FOB factory
- All prices are Grade 1 Laminate, Black Wrinkle, Maple species, standard wood finishes, and shipped unassembled.
- Maple species is standard. Oak species available for the same price (specify on order). Additional species also available, call for pricing.
- See Edge details in the Tables introduction section *Tables- Edge Profiles*.



Shown with **VBN** Top
41.75" Overall Table Height
42" Overall Table Height,
 Group E Only

Group A

Group B

Group C

Group D

Group E

Ash Maple

Group F

Limited sizes available. See A,B,C next to price.

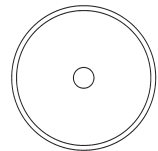
PC = Polished Chrome SC = Satin Chrome

Top Size (Inches)	Base Size (Inches)	List Price		Apprx WT		List Price		Apprx WT		List Price		Apprx WT		List Price		Apprx WT		Metal Upcharge Grades 2/3/PC/SC			
24 RD	18 RD ○	427	49	487	53	806	53	956	53	994	65	463 ^A	53	13	103	208	272				
30 RD	18 RD ○	452	60	551	65	868	65	1,052	65	1,096	84	494 ^A	66	13	103	208	272				
36 RD	22 RD ○	502	85	783	94	978	94	1,234	94	1,283	121	609 ^{A,B,C}	94	22	111	247	262				
24 SQ	18 RD ○	415	49	452	53	526	53	612	53	724	65	486 ^{A,C}	53	13	103	208	272				
30 SQ	18 RD ○	439	59	501	65	597	65	701	65	807	84	518 ^{A,C}	66	13	103	208	272				
36 SQ	22 RD ○	494	85	607	94	732	94	836	94	1,057	121	615 ^{A,B,C}	99	22	111	247	262				
24x30	18 RD ○	455	54	475	59	563	59	659	59	742	74	488 ^{A,C}	59	13	103	208	272				
30x48	18 RD +	683	104	760	114	915	114	1,047	114	1,268	144	720 ^{A,C}	114	29	203	414	543				
30x60	18 RD +	709	116	824	128	1,100	128	1,305	128	1,484	165	755 ^A	128	29	203	414	543				
30x72	18 RD + s	790	127	919	142	1,194	142	1,423	142	1,922	187	801 ^A	142	29	203	414	543				
36x48	30 RD ○	730	134	919	146	977	146	1,160	146	1,466	182	N/A	N/A	22	218	322	377				
36x60	30 RD ○	816	148	1,047	162	1,121	162	1,352	162	1,732	208	N/A	N/A	22	218	350	377				
36x72	22 RD + s	1,008	166	1,287	184	1,376	184	1,652	184	2,108	238	N/A	N/A	41	222	492	525				

+ = 2 bases per top included s = 15" cast iron spider included ○ = Footring available. Add \$223

HOW TO BUILD YOUR TABLE MODEL NUMBER:

B21 series table base with VBN table top
 B21 plus edge profile number = **STUB21-VBN**
 With footring = **SFB21-VBN**



18 RD
 22 RD
 30 RD

NOTES:

- Pricing is for complete table.
- Use the next largest table price for intermediate table sizes.
- All prices are list, FOB factory
- All prices are Grade 1 Laminate, Black Wrinkle, Maple species, standard wood finishes, and shipped unassembled.
- Maple species is standard. Oak species available for the same price (specify on order). Additional species also available, call for pricing.
- See Edge details in the Tables introduction section *Tables- Edge Profiles*.



Shown with 17362 Top and Optional Footring

42.75" Overall Table Height
43" Overall Table Height,
Group E Only

Group A

Group B

Group C

Group D

Group E

Butcher Block/
Random Plank

Ash Maple

Group F

Limited sizes available. See A,B,C next to price.

PC = Polished Chrome SC = Satin Chrome

Top Size (Inches)	Base Size (Inches)	List Price	Apprx WT	List Price	Apprx WT	List Price	Apprx WT	List Price	Apprx WT	List Price	Apprx WT	List Price	Apprx WT	Metal Upcharge Grades 2/3/PC/SC			
24 RD	17 RD ○	451	48	510	52	829	52	981	52	1,017	64	486 ^A	52	44	86	162	240
30 RD	17 RD ○	475	59	574	64	891	64	1,075	64	1,118	83	518 ^A	65	44	86	162	240
36 RD	22 RD ○	531	86	815	95	1,008	95	1,263	95	1,313	122	639 ^{A,B,C}	95	53	127	192	259
24 SQ	17 RD ○	439	48	475	52	549	52	634	52	746	64	509 ^{A,C}	52	44	86	162	240
30 SQ	22 RD ○	510	73	571	79	667	79	772	79	877	98	587 ^{A,C}	80	53	127	192	259
36 SQ	22 RD ○	519	86	629	95	755	95	859	95	1,080	122	639 ^{A,B,C}	100	53	127	192	259
24x30	17 RD ○	477	53	498	58	586	58	681	58	765	73	513 ^{A,C}	58	44	86	162	240
30x48	17 RD +	729	102	806	112	960	112	1,095	112	1,313	142	766 ^{A,C}	112	88	172	325	480
30x60	17 RD +	755	114	870	126	1,148	126	1,352	126	1,531	163	802 ^A	126	88	172	325	480
30x72	17 RD +	838	125	965	140	1,241	140	1,470	140	1,969	185	847 ^A	140	88	172	325	480
36x48	30 RD ○	786	149	975	161	1,033	161	1,217	161	1,521	197	N/A	N/A	54	144	247	328
36x60	30 RD ○	870	163	1,103	177	1,179	177	1,408	177	1,788	223	N/A	N/A	54	144	247	328
36x72	22 RD +	1,023	168	1,301	186	1,392	186	1,666	186	2,123	240	N/A	N/A	107	256	382	520

+ = 2 bases per top included

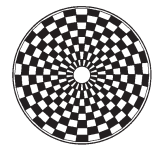
○ = Footring available. Add \$223

HOW TO BUILD YOUR TABLE MODEL NUMBER:

B28 series table base with 17362 table top

B28 plus edge profile number = **STUB28-17362**

With footring = **SFB28-17362** (as shown)



17 RD
22 RD
30 RD

NOTES:

- Pricing is for complete table.
- Use the next largest table price for intermediate table sizes.
- All prices are list, FOB factory
- All prices are Grade 1 Laminate, Black Wrinkle, Maple species, standard wood finishes, and shipped unassembled.
- Maple species is standard. Oak species available for the same price (specify on order). Additional species also available, call for pricing.
- See Edge details in the Tables introduction section *Tables- Edge Profiles*.



Shown with **WEBN** Top
 42" Overall Table Height
 42.25" Overall Table Height, Group E Only

Group A

Group B

Group C

Group D

Group E

Group F

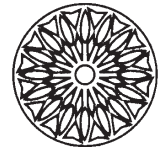
Limited sizes available. See A,B,C next to price.

PC = Polished Chrome SC = Satin Chrome

Top Size (Inches)	Base Size (Inches)	List Price	Apprx WT	List Price	Apprx WT	List Price	Apprx WT	List Price	Apprx WT	List Price	Apprx WT	List Price	Apprx WT	Metal Upcharge Grades 2/3/PC/SC			
														30	104	179	228
24 RD	20 RD o	473	62	532	66	851	66	1,002	66	1,040	78	509 ^A	66	30	104	179	228
30 RD	24 RD o	519	76	618	81	935	81	1,118	81	1,161	100	563 ^A	82	32	123	207	255
36 RD	24 RD o	528	88	811	97	1,005	97	1,260	97	1,311	124	636 ^{A,B,C}	97	32	123	207	255
24 SQ	20 RD o	462	62	497	66	572	66	659	66	770	78	531 ^{A,C}	66	30	104	179	228
30 SQ	24 RD o	506	75	568	81	664	81	768	81	874	100	584 ^{A,C}	82	32	123	207	255
36 SQ	24 RD o	516	88	626	97	752	97	857	97	1,078	124	636 ^{A,B,C}	102	32	123	207	255
24x30	20 RD o	501	67	521	72	609	72	702	72	787	87	534 ^{A,C}	72	30	104	179	228
30x48	20 RD +	752	128	830	138	985	138	1,118	138	1,339	168	789 ^{A,C}	138	58	208	359	456
30x60	20 RD +	781	140	895	152	1,171	152	1,375	152	1,556	189	825 ^A	152	58	208	359	456
30x72	20 RD + s	883	153	1,010	168	1,286	168	1,514	168	2,013	213	870 ^A	168	58	208	359	456
36x48	30 RD o	718	121	903	133	961	133	1,148	133	1,451	169	N/A	N/A	39	148	331	374
36x60	30 RD o	801	135	1,034	149	1,108	149	1,338	149	1,718	195	N/A	N/A	39	148	331	374
36x72	24 RD +	1,017	172	1,296	190	1,386	190	1,661	190	2,118	244	N/A	N/A	64	249	413	510

+ = 2 bases per top included s = 15" cast iron spider included o = Footring available. Add \$223

HOW TO BUILD YOUR TABLE MODEL NUMBER:
 B50 series table base with WEBN table top
 B50 plus edge profile number = **STUB50-WEBN**
 With footring = **SFB50-WEBN**



20 RD
 24 RD
 30 RD

NOTES:

- Pricing is for complete table.
- Use the next largest table price for intermediate table sizes.
- All prices are list, FOB factory
- All prices are Grade 1 Laminate, Black Wrinkle, Maple species, standard wood finishes, and shipped unassembled.
- Maple species is standard. Oak species available for the same price (specify on order). Additional species also available, call for pricing.
- See Edge details in the Tables introduction section *Tables—Edge Profiles*.



Shown with **WE** Top
42" Overall Table Height
42.25" Overall Table Height,
 Group E Only

Group A

Group B

Group C

Group D

Group E

Group F

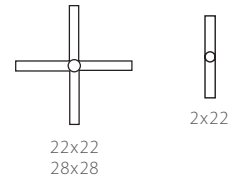
Limited sizes available. See A,B,C next to price.

PC = Polished Chrome SC = Satin Chrome

Top Size (Inches)	Base Size (Inches)	Group A		Group B		Group C		Group D		Group E		Group F		Metal Upcharge Grades 2/3/PC/SC			
		List Price	Apprx WT	List Price	Apprx WT	List Price	Apprx WT	List Price	Apprx WT	List Price	Apprx WT	List Price	Apprx WT				
24 RD	22x22 o	473	49	532	53	851	53	1,002	53	1,040	65	509 ^A	53	10	69	84	113
30 RD	22x22 o	497	60	597	65	913	65	1,097	65	1,140	84	540 ^A	66	10	69	84	113
36 RD	28x28 o	556	78	838	87	1,033	87	1,287	87	1,339	114	664 ^{A,B,C}	87	16	83	98	146
24 SQ	22x22 o	462	49	497	53	572	53	659	53	770	65	531 ^{A,C}	53	10	69	84	113
30 SQ	22x22 o	485	59	545	65	642	65	746	65	851	84	563 ^{A,C}	66	10	69	84	113
36 SQ	28x28 o	543	78	654	87	781	87	884	87	1,104	114	664 ^{A,B,C}	92	16	83	98	146
24x30	22x22 o	501	54	521	59	609	59	702	59	787	74	534 ^{A,C}	59	10	69	84	113
30x48	2x22 +	632	90	711	100	866	100	998	100	1,218	130	670 ^{A,C}	100	14	103	114	179
30x60	2x22 +	661	102	776	114	1,052	114	1,256	114	1,435	151	704 ^A	114	14	103	114	179
30x72	2x22 +	743	113	869	128	1,146	128	1,374	128	1,874	173	751 ^A	128	14	103	114	179
36x48	2x22 +	665	99	851	111	909	111	1,096	111	1,399	147	N/A	N/A	14	103	114	179
36x60	2x22 +	748	113	982	127	1,056	127	1,286	127	1,666	173	N/A	N/A	14	103	114	179
36x72	2x22 +	834	126	1,112	144	1,201	144	1,477	144	1,934	198	N/A	N/A	14	103	114	179

+ = 2 bases per top included o = Footring available. Add \$223

HOW TO BUILD YOUR TABLE MODEL NUMBER:
 B56 series table base with WE table top
 B56 plus edge profile number = **STUB56-WE**
 With footring = **SFB56-WE**



NOTES:

- Pricing is for complete table.
- Use the next largest table price for intermediate table sizes.
- All prices are list, FOB factory
- All prices are Grade 1 Laminate, Black Wrinkle, Maple species, standard wood finishes, and shipped unassembled.
- Maple species is standard. Oak species available for the same price (specify on order). Additional species also available, call for pricing.
- See Edge details in the Tables introduction section *Tables- Edge Profiles*.

STAND UP TABLES | B85 SERIES

Shelby Williams®



Shown with **WEBN** Top
42.5" Overall Table Height
42.75" Overall Table Height,
 Group E Only

Group A

Group B

Group C

Group D

Group E

Butcher Block/
Random Plank

Ash Maple

Group F

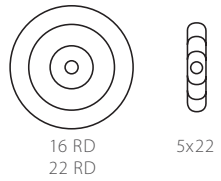
Limited sizes available. See A,B,C next to price.

PC = Polished Chrome SC = Satin Chrome

Top Size (Inches)	Base Size (Inches)	List Price	Apprx WT	List Price	Apprx WT	List Price	Apprx WT	List Price	Apprx WT	List Price	Apprx WT	List Price	Apprx WT	Metal Upcharge Grades 2/3/PC/SC			
24 RD	16 RD ○	458	52	519	56	837	56	988	56	1,026	68	495 ^A	56	39	86	N/A	N/A
30 RD	16 RD ○	484	63	582	68	899	68	1,082	68	1,126	87	527 ^A	69	39	86	N/A	N/A
36 RD	22 RD ○	555	88	836	97	1,031	97	1,286	97	1,337	124	661 ^{A,B,C}	97	42	127	N/A	N/A
24 SQ	16 RD ○	448	52	484	56	557	56	643	56	754	68	518 ^{A,C}	56	39	86	N/A	N/A
30 SQ	22 RD ○	531	75	591	81	689	81	792	81	899	100	610 ^{A,C}	82	42	127	N/A	N/A
36 SQ	22 RD ○	541	88	650	97	779	97	882	97	1,103	124	661 ^{A,B,C}	102	42	127	N/A	N/A
24x30	16 RD ○	486	57	506	62	595	62	689	62	773	77	520 ^{A,C}	62	39	86	N/A	N/A
30x48	5x22 +	708	94	785	104	940	104	1,074	104	1,295	134	744 ^{A,C}	104	79	189	N/A	N/A
30x60	5x22 +	736	106	850	118	1,126	118	1,330	118	1,511	155	781 ^A	118	79	189	N/A	N/A
30x72	5x22 +	818	117	945	132	1,220	132	1,449	132	1,948	177	826 ^A	132	79	189	N/A	N/A
36x48	5x22 +	740	103	928	115	985	115	1,170	115	1,474	151	N/A	N/A	79	189	N/A	N/A
36x60	5x22 +	824	117	1,056	131	1,132	131	1,360	131	1,741	177	N/A	N/A	79	189	N/A	N/A
36x72	5x22 +	908	130	1,188	148	1,277	148	1,553	148	2,008	202	N/A	N/A	79	189	N/A	N/A

+ = 2 bases per top included ○ = Footring available. Add \$223

HOW TO BUILD YOUR TABLE MODEL NUMBER:
 B85 series table base with WEBN table top
 B85 plus edge profile number = **STUB85-WEBN**
 With footring = **SFB85-WEBN**



NOTES:

- Pricing is for complete table.
- Use the next largest table price for intermediate table sizes.
- All prices are list, FOB factory
- All prices are Grade 1 Laminate, Black Wrinkle, Maple species, standard wood finishes, and shipped unassembled.
- Maple species is standard. Oak species available for the same price (specify on order). Additional species also available, call for pricing.
- See Edge details in the Tables introduction section *Tables- Edge Profiles*.



Shown with **WBEWE** Top
43.25" Overall Table Height
43.5" Overall Table Height,
 Group E Only

Group A



Group B



Group C



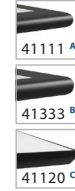
Group D



Group E



Group F



Limited sizes available. See A,B,C next to price.

PC = Polished Chrome SC = Satin Chrome

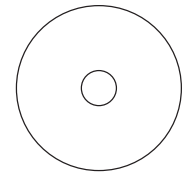
Top Size (Inches)	Base Size (Inches)	List Price	Apprx WT	List Price	Apprx WT	List Price	Apprx WT	List Price	Apprx WT	List Price	Apprx WT	List Price	Apprx WT	Metal Upcharge Grades 2/3/PC/SC			
24 RD	18 RD	987	51	1,047	55	1,366	55	1,516	55	1,555	67	998 ^A	55	12	N/A	N/A	N/A
30 RD	18 RD	1,012	62	1,111	67	1,427	67	1,611	67	1,654	86	1,030 ^A	68	12	N/A	N/A	N/A
36 RD	22 RD	1,085	84	1,367	93	1,562	93	1,818	93	1,868	120	1,172 ^{A,B,C}	93	18	N/A	N/A	N/A
24 SQ	18 RD	977	51	1,012	55	1,085	55	1,172	55	1,283	67	1,023 ^{A,C}	55	12	N/A	N/A	N/A
30 SQ	18 RD	999	61	1,060	67	1,156	67	1,261	67	1,366	86	1,054 ^{A,C}	68	12	N/A	N/A	N/A
36 SQ	22 RD	1,073	84	1,183	93	1,310	93	1,413	93	1,634	120	1,172 ^{A,B,C}	98	18	N/A	N/A	N/A
24x30	18 RD	1,015	56	1,035	61	1,122	61	1,218	61	1,302	76	1,025 ^{A,C}	61	12	N/A	N/A	N/A
30x48	28 RD	1,281	108	1,358	118	1,514	118	1,647	118	1,867	148	1,298 ^{A,C}	118	21	N/A	N/A	N/A
30x60	18 RD +	1,829	120	1,943	132	2,220	132	2,425	132	2,606	169	1,827 ^A	132	27	N/A	N/A	N/A
30x72	18 RD +	1,913	131	2,038	146	2,314	146	2,544	146	3,041	191	1,873 ^A	146	27	N/A	N/A	N/A
36x48	28 RD	1,313	117	1,502	129	1,559	129	1,743	129	2,047	165	N/A	N/A	21	N/A	N/A	N/A
36x60	22 RD +	2,046	231	2,279	245	2,352	245	2,582	245	2,963	291	N/A	N/A	38	N/A	N/A	N/A
36x72	22 RD +	2,132	244	2,409	262	2,499	262	2,775	262	3,231	316	N/A	N/A	38	N/A	N/A	N/A

+ = 2 bases per top included

Wood column

HOW TO BUILD YOUR TABLE MODEL NUMBER:

69A5 series table base with WBEWE table top
 69A plus edge profile number = **STU69A-WBEWE**



18 RD
 22 RD
 28 RD

NOTES:

- Pricing is for complete table.
- Use the next largest table price for intermediate table sizes.
- All prices are list delivered to Zone 1. Add 4% for Zone 2.
- All prices are Grade 1 Laminate, Black Wrinkle, Maple species, standard wood finishes, and shipped unassembled.
- Maple species is standard. Oak species available for the same price (specify on order). Additional species also available, call for pricing.
- See Edge details in the Tables introduction section *Tables- Edge Profiles*.

OCCASIONAL TABLES

Shelby Williams®

1091



1091-26 Occasional Table



1091-18 End Table

NOTES:

- All prices are list, FOB factory.
- All prices are Grade 1 and shipped unassembled. Current brand or laminate available. Call for quote.
- Tables are constructed of a 3/8" wide solid maple, with top and bottom 1/4 bevels, attached to a base of solid maple apron and legs.
- Custom sizes available upon request.
- For quantities less than 5, add 30%.
- See Edge details in the Tables introduction section *Tables-Edge Profiles*.

CAT #	DESCRIPTION	DIMENSIONS	ADDITIONAL DIMENSIONS	APPRX WT	COM/LIST	METAL UPCHARGE GRADES 2/3/PC/SC
1091-18	24R Top, (1) 18 Disc Base	24RX 18H	add \$44 for 24H or 30H		971	12/17/126/232
1091-18	30R Top, (1) 18 Disc Base	30RX 18H	add \$44 for 24H or 30H		1000	12/17/126/232
1091-22	36R Top, (1) 22 Disc Base	36RX 18H	add \$44 for 24H or 30H		1059	10/23/161/298
1091-22	42R Top, (1) 22 Disc Base	42RX 18H	add \$44 for 24H or 30H		1125	10/23/161/298
1091-26	48R Top, (1) 26 Disc Base	48RX 18H	add \$44 for 24H or 30H		1342	12/26/195/360
1091-18	24 x 24 Top, (1) 18 Disc Base	24X24 X 18H	add \$44 for 24H or 30H		960	12/17/126/232
1091-18	30 x 30 Top, (1) 18 Disc Base	30X30 X 18H	add \$44 for 24H or 30H		987	12/17/126/232
1091-22	36 x 36 Top, (1) 22 Disc Base	36X36 X 18H	add \$44 for 24H or 30H		1042	10/23/161/298
1091-22	42 x 42 Top, (1) 22 Disc Base	42X42X18H	add \$44 for 24H or 30H		1106	10/23/161/298
1091-26	48 x 48 Top, (1) 26 Disc Base	48X48X18H	add \$44 for 24H or 30H		1323	12/26/195/360
1091-26	30 x 42 Top, (1) 26 Disc Base	30X42X18H	add \$44 for 24H or 30H		1294	12/26/195/360
1091-26	30 x 48 Top, (1) 26 Disc Base	30X48X18H	add \$44 for 24H or 30H		1336	12/26/195/360

OCCASIONAL TABLES | BWE/FWE SERIES

BWE Series



BWE-L-3020



BWE-V-222820



BWE-RD-202016

NOTES:

- All prices are list, FOB factory.
- All prices are Grade 1 and shipped unassembled. Current brand or laminate available. Call for quote.
- Tables are constructed of a 3/8" wide solid maple, with top and bottom 1/4 bevels, attached to a base of solid maple apron and legs.
- Custom sizes available upon request.
- For quantities less than 5, add 30%.
- See Edge details in the Tables introduction section *Tables-Edge Profiles*.

Laminate

Long Grain Maple Veneer

Reversed Diamond Veneer

Dimensions	Apprx WT	Catalog Number	List Price	Catalog Number	List Price	Catalog Number	List Price
20W x 20D x 16H	80	BWE-L-202016	684	BWE-V-202016	776	BWE-RD-202016	1,005
20W x 34D x 16H	112	BWE-L-203416	798	BWE-V-203416	937	BWE-RD-203416	1,194
20W x 42D x 16H	126	BWE-L-204216	857	BWE-V-204216	1,042	BWE-RD-204216	1,327
22W x 28D x 20H	85	BWE-L-222820	750	BWE-V-222820	865	BWE-RD-222820	1,108
24 Diameter, 16H	92	BWE-L-2416	901	BWE-V-2416	1,087	BWE-RD-2416	1,316
24 Diameter, 20H	98	BWE-L-2420	920	BWE-V-2420	1,105	BWE-RD-2420	1,336
24 Diameter, 24H	104	BWE-L-2424	939	BWE-V-2424	1,124	BWE-RD-2424	1,354
24W x 24D x 20H	89	BWE-L-242420	698	BWE-V-242420	790	BWE-RD-242420	1,022
24W x 24D x 24H	90	BWE-L-242424	703	BWE-V-242424	798	BWE-RD-242424	1,027
28W x 28D x 20H	92	BWE-L-282820	795	BWE-V-282820	939	BWE-RD-282820	1,198
30 Diameter, 16H	108	BWE-L-3016	1,087	BWE-V-3016	1,378	BWE-RD-3016	1,636
30 Diameter, 20H	114	BWE-L-3020	1,104	BWE-V-3020	1,392	BWE-RD-3020	1,655
30 Diameter, 24H	116	BWE-L-3024	1,122	BWE-V-3024	1,411	BWE-RD-3024	1,673

Shelby Williams®

BWE/FWE SERIES | OCCASIONAL TABLES

FWE Series



FWE-L-242420



FWE-V-203416



FWE-RD-202016

NOTES:

NOTES: All prices are list, FOB factory.

- All prices are Grade 1 and shipped unassembled. Current brand or laminate available. Call for quote.
- Tables are constructed of a 3/8" wide solid maple, with top and bottom 1/4 bevels, attached to a base of solid maple apron and legs.
- Custom sizes available upon request.
- For quantities less than 5, add 30%.
- See Edge details in the Tables introduction section *Tables- Edge Profiles*.

Laminate

Long Grain Maple Veneer

Reversed Diamond Veneer

Dimensions	Apprx WT	Catalog Number	List Price	Catalog Number	List Price	Catalog Number	List Price
20W x 20D x 16H	80	FWE-L-202016	806	FWE-V-202016	900	FWE-RD-202016	1,129
20W x 34D x 16H	112	FWE-L-203416	982	FWE-V-203416	1,121	FWE-RD-203416	1,380
20W x 42D x 16H	126	FWE-L-204216	1,076	FWE-V-204216	1,262	FWE-RD-204216	1,548
22W x 28D x 20H	85	FWE-L-222820	903	FWE-V-222820	1,020	FWE-RD-222820	1,263
24 Diameter, 16H	92	FWE-L-2416	995	FWE-V-2416	1,181	FWE-RD-2416	1,409
24 Diameter, 20H	98	FWE-L-2420	1,014	FWE-V-2420	1,198	FWE-RD-2420	1,427
24 Diameter, 24H	104	FWE-L-2424	1,032	FWE-V-2424	1,218	FWE-RD-2424	1,447
24W x 24D x 20H	89	FWE-L-242420	822	FWE-V-242420	916	FWE-RD-242420	1,144
24W x 24D x 24H	90	FWE-L-242424	828	FWE-V-242424	920	FWE-RD-242424	1,149
28W x 28D x 20H	92	FWE-L-282820	995	FWE-V-282820	1,140	FWE-RD-282820	1,401
30 Diameter, 16H	108	FWE-L-3016	1,234	FWE-V-3016	1,523	FWE-RD-3016	1,784
30 Diameter, 20H	114	FWE-L-3020	1,249	FWE-V-3020	1,539	FWE-RD-3020	1,799
30 Diameter, 24H	116	FWE-L-3024	1,268	FWE-V-3024	1,558	FWE-RD-3024	1,818

OGE/WBE SERIES

OGE Series



OGE-L-203416



OGE-V-242420



BWE-RD-2424

NOTES:

- All prices are list, FOB factory.
- All prices are Grade 1 and shipped unassembled. Current brand or laminate available. Call for quote.
- Tables are constructed of a 3/8" wide solid maple, with top and bottom 1/4 bevels, attached to a base of solid maple apron and legs.
- Custom sizes available upon request.
- For quantities less than 5, add 30%.
- See Edge details in the Tables introduction section *Tables- Edge Profiles*.

Laminate

Long Grain Maple Veneer

Reversed Diamond Veneer

Dimensions	Apprx WT	Catalog Number	List Price	Catalog Number	List Price	Catalog Number	List Price
20W x 20D x 16H	80	OGE-L-202016	755	OGE-V-202016	848	OGE-RD-202016	1,077
20W x 34D x 16H	112	OGE-L-203416	905	OGE-V-203416	1,043	OGE-RD-203416	1,303
20W x 42D x 16H	126	OGE-L-204216	982	OGE-V-204216	1,167	OGE-RD-204216	1,454
22W x 28D x 20H	85	OGE-L-222820	841	OGE-V-222820	954	OGE-RD-222820	1,195
24 Diameter, 16H	92	OGE-L-2416	942	OGE-V-2416	1,125	OGE-RD-2416	1,355
24 Diameter, 20H	98	OGE-L-2420	956	OGE-V-2420	1,144	OGE-RD-2420	1,371
24 Diameter, 24H	104	OGE-L-2424	978	OGE-V-2424	1,161	OGE-RD-2424	1,391
24W x 24D x 20H	89	OGE-L-242420	770	OGE-V-242420	864	OGE-RD-242420	1,094
24W x 24D x 24H	90	OGE-L-242424	776	OGE-V-242424	858	OGE-RD-242424	1,098
28W x 28D x 20H	92	OGE-L-282820	915	OGE-V-282820	1,060	OGE-RD-282820	1,318
30 Diameter, 16H	108	OGE-L-3016	1,148	OGE-V-3016	1,436	OGE-RD-3016	1,699
30 Diameter, 20H	114	OGE-L-3020	1,164	OGE-V-3020	1,453	OGE-RD-3020	1,714
30 Diameter, 24H	116	OGE-L-3024	1,184	OGE-V-3024	1,471	OGE-RD-3024	1,731

WBE Series



WBE-L-3024



WBE-V-204216



FWE-RD-242420

NOTES:

- All prices are list, FOB factory.
- All prices are Grade 1 and shipped unassembled. Current brand or laminate available. Call for quote.
- Tables are constructed of a 3/8" wide solid maple, with top and bottom 1/4 bevels, attached to a base of solid maple apron and legs.
- Custom sizes available upon request.
- For quantities less than 5, add 30%.
- See Edge details in the Tables introduction section *Tables- Edge Profiles*.

Laminate

Long Grain Maple Veneer

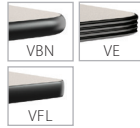
Reversed Diamond Veneer

Dimensions	Apprx WT	Catalog Number	List Price	Catalog Number	List Price	Catalog Number	List Price
20W x 20D x 16H	80	WBE-L-202016	769	WBE-V-202016	861	WBE-RD-202016	1,091
20W x 34D x 16H	112	WBE-L-203416	927	WBE-V-203416	1,066	WBE-RD-203416	1,321
20W x 42D x 16H	126	WBE-L-204216	1,008	WBE-V-204216	1,193	WBE-RD-204216	1,477
22W x 28D x 20H	85	WBE-L-222820	857	WBE-V-222820	973	WBE-RD-222820	1,215
24 Diameter, 16H	92	WBE-L-2416	953	WBE-V-2416	1,140	WBE-RD-2416	1,367
24 Diameter, 20H	98	WBE-L-2420	973	WBE-V-2420	1,158	WBE-RD-2420	1,388
24 Diameter, 24H	104	WBE-L-2424	990	WBE-V-2424	1,175	WBE-RD-2424	1,406
24W x 24D x 20H	89	WBE-L-242420	784	WBE-V-242420	875	WBE-RD-242420	1,105
24W x 24D x 24H	90	WBE-L-242424	790	WBE-V-242424	883	WBE-RD-242424	1,112
28W x 28D x 20H	92	WBE-L-282820	935	WBE-V-282820	1,080	WBE-RD-282820	1,340
30 Diameter, 16H	108	WBE-L-3016	1,167	WBE-V-3016	1,459	WBE-RD-3016	1,719
30 Diameter, 20H	114	WBE-L-3020	1,187	WBE-V-3020	1,475	WBE-RD-3020	1,734
30 Diameter, 24H	116	WBE-L-3024	1,203	WBE-V-3024	1,493	WBE-RD-3024	1,754

CBRS CYBER SMALL TABLE



Laminate Group A



Laminate Group B



Top Size (Inches)	List Price	Apprx WT	List Price	Apprx WT
24 RD	600	56	1,069	60
42 RD	1,042	139	1,575	150
24 SQ	581	48	792	52
30 SQ	817	71	920	77

HOW TO BUILD YOUR TABLE MODEL NUMBER:

CBRS series table base with VBN table top
 CBRS plus edge profile number = **CBRS-VBN**

STANDARD:

- B85 series cast iron base
- Overall heights available: 12", 18", and 24". Specify on order.
- Grade 3 Tufcote™
- Glides: 5 RCT2 rubber cushion
- Tables are standard with PS1 or PS2 Power Sphere and Right Angle Plug. Specify Black or Silver.
- Deduct \$233 if ordered without Power Sphere.

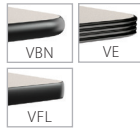
NOTE:

- Optional 6900 disc base available, same pricing
- Specify base style on order
- Also available in Dining Height. Call for pricing.

CBRT CYBER TALL TABLE



Laminate Group A



Laminate Group B



Top Size (Inches)	List Price	Apprx WT	List Price	Apprx WT
30 RD	911	66	1,394	71
36 RD	974	91	1,482	100

HOW TO BUILD YOUR TABLE MODEL NUMBER:

CBRT series table base with VBN table top
 CBRT plus edge profile number = **CBRT-VBN**

STANDARD:

- 42" to top of table
- 69 series cast iron disc base
- Grade 3 Tufcote™
- Glides: 5 RCT2 rubber cushion
- Tables are standard with PS1 or PS2 Power Sphere and Right Angle Plug. Specify Black or Silver. Deduct \$233 if ordered without Power Sphere.
- Standard with shelf

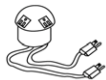
OPTIONS:

Footring: Add SF to prefix. Only available on CBRT
 Example: SFCBRT-VBN Add \$223
 Purse Hook: Add Suffix - PH. Only available on CBRT
 Example: 60CBRT-VBN-PH Add \$52

NOTE

- Optional B853 base available, same pricing
- Specify base style on order
- Also available in Dining Height. Call for pricing.

PS1



Includes: 4 Simplexes, 15 amp, 2 @ 6' cords. Grommet will be centered. Color: Black or Silver

PS2



Includes: 2 Simplexes, 15 amp, 6' cord, 2 spaces (customer's own communication). Size: 3.5" diameter. Color: Black or Silver. Grommet Will be centered

NOTES:

- Pricing is for complete table.
- All prices are Grade 1 Laminate, Grade 3 Powdercoat, Maple species, standard wood finishes, and shipped unassembled.
- Optional species available, call for pricing
- Additional Shapes and top sizes available, call for pricing
- All prices are list, FOB factory

Electrical Options for CV with Wireway series only:

- Specify color or finish if applicable.
- GLB-65: Select 2 Simplexes or one Simplex and one Data

79ST & 80ST SERIES | COMMUNITY TABLES

79ST SERIES



FEATURES

- 1" square 16 gage tubing.
- Welded frame
- Available in GD 3 Tufcote™ only
- Order must specify table height



Top Size (Inches)	Table Height (Inches)	List Price	List Price	List Price	List Price	List Price
24x24	18 or 24	794	830	1,111	1,196	2,543
24x30	18 or 24	833	855	1,129	1,280	2,642
30x30	18 or 24	819	881	1,198	1,373	2,606
36x36	18 or 24	828	941	1,408	1,708	2,628
24x42	18 or 24	847	881	1,262	1,504	2,675
24x48	29, 36, or 42	955	1,006	1,425	1,720	3,038
24x60	29, 36, or 42	974	1,071	1,580	2,179	3,085
24x72	29, 36, or 42	1,062	1,178	1,789	2,459	3,326
30x48	29, 36, or 42	965	1,045	1,569	1,905	3,063
30x60	29, 36, or 42	994	1,112	1,793	2,278	3,135
30x72	29, 36, or 42	1,100	1,232	2,267	2,793	3,423
36x48	29, 36, or 42	998	1,191	1,756	2,148	3,144
36x60	29, 36, or 42	1,084	1,325	2,031	2,153	3,360
36x72	29, 36, or 42	1,196	1,483	2,330	3,156	3,661

HOW TO BUILD YOUR TABLE MODEL NUMBER:

79ST series table base with FE table top and table height of 42"

79ST + edge profile number + table height = **79ST-FE-42**

Note: - 1440 flat PVC edge

80ST SERIES



FEATURES

- 2" square 16 gage tubing.
- Welded frame
- Available in GD 3 Tufcote™ only
- Standard Overall Table Height 42"
- Order must specify table height



Top Size (Inches)	List Price	List Price	List Price	List Price	List Price
24x48	1,096	1,141	1,513	1,775	3,564
24x60	1,113	1,198	1,651	2,184	3,606
24x72	1,170	1,273	1,817	2,413	3,750
30x48	1,105	1,176	1,641	1,940	3,586
30x60	1,130	1,235	1,841	2,271	3,650
30x72	1,225	1,341	2,261	2,729	3,906
36x48	1,133	1,305	1,807	2,156	3,658
36x60	1,210	1,425	2,052	2,161	3,850
36x72	1,309	1,565	2,317	3,052	4,118

HOW TO BUILD YOUR TABLE MODEL NUMBER:

80ST series table base with FE table top and table height of 42"

80ST + edge profile number + table height = **80ST-FE-42**

Note: - 1440 flat PVC edge

74PT EXCHANGE COMMUNITY TABLE



FORMICA/WILSONART
GRADE 1 LAMINATE

Table Height (Inches)	Standard Height	Counter Height	Bar Height
30x72	2,630	2,809	3,159
30x84	2,937	3,154	3,560
30x96	2,965	3,182	3,588
36x72	2,786	2,956	3,324
36x84	3,107	3,315	3,740
36x96	3,135	3,343	3,768
42x72	3,074	3,215	3,622
42x84	3,422	3,669	4,084
42x96	3,470	3,697	4,122
48x72	3,088	3,230	3,636
48x84	3,456	3,683	4,098
48x96	3,485	3,711	4,127

FEATURES

- Grade 1 Standard Laminate- Formica or Wilson Art only
- Also available in Venner-Art and ColorCore (see below)

POWER OPTIONS

- Axel Z \$ 680
- Glenbeigh \$ 512
- EXP2(MHO) \$ 803

WHEN ORDERING PRODUCT NUMBER

- 74PT3096SH -Standard height
- 79PT3096CH- Counter height
- 70PT3096BH - Bar Height

FORMICA COLORCORE

Table Height (Inches)	Standard Height	Counter Height	Bar Height
30x72	8,235	8,433	8,811
30x84	8,580	8,807	10,048
30x96	9,387	9,614	10,077
36x72	8,396	8,585	8,991
36x84	8,764	8,981	10,252
36x96	9,572	9,789	10,280
42x72	8,712	8,882	9,326
42x84	9,907	10,152	10,634
42x96	9,935	10,181	10,672
48x72	9,505	9,675	10,119
48x84	9,921	10,167	11,427
48x96	10,728	10,974	11,456

LAMINART VENEER-ART

Table Height (Inches)	Standard Height	Counter Height	Bar Height
30x72	16,527	16,726	17,103
30x84	16,872	17,099	19,521
30x96	18,860	19,087	19,550
36x72	16,688	16,887	17,283
36x84	17,056	17,273	19,724
36x96	19,044	19,262	19,753
42x72	17,004	17,174	17,618
42x84	19,380	19,625	20,107
42x96	19,408	19,653	20,145
48x72	18,978	19,148	19,592
48x84	19,394	19,639	22,085
48x96	21,387	21,632	22,114

NOTES:

- Pricing is for complete table.
- Use the next largest table price for intermediate table sizes.
- All prices are list delivered to Zone 1. Add 4% for Zone 2.
- All prices are Grade 1 Laminate, Black Wrinkle, Maple species, standard wood finishes, and shipped unassembled.
- Maple species is standard. Oak species available for the same price (specify on order). Additional species also available, call for pricing.
- See Edge details in the Tables introduction section *Tables- Edge Profiles*.

COMMUNITY TABLES |

CV COMMUNITY TABLE 29.5" Standard or 42"

Stand Up Overall Table Height



CV-TD Tear Drop 30" x 39"
L Left 36" x 61"
R Right 36" x 61"



LB21 Left w/B21 Series Base
36" x 61"
RB21 Right w/B21 Series Base
36" x 61"

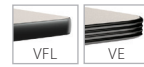


WA Wave 36" x 58"

DESCRIPTION:

- Choice of Grade 1 Laminate
- Standard overall height of 29.5"
- Choice of Grade 3 Tufcote™
- Tear Drop has 3" dia column with "X" base spread of 24 x 24, with casters
- Left and Right with Disk Base: 1 each B213-18 base, 2 each PL23 pin leg, 3" columns with SLG4 Self Leveling Glides. Gd 3 Tufcote™ only
- Left, Right and Wave with Pin Leg: 4 each PL23 pin leg, 3" columns with SLG4 Self Leveling Glides
- Add \$153 upcharge if ordered with P-3 Polish Chrome Finish. Not available on LB21 and RB21

Group A



Group C

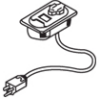
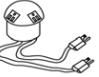





	List Price	Apprx WT	List Price	Apprx WT
TD Tear Drop	645 742 H	68	1072 1232 H	96
L Left R Right	944 1085 H	85	1252 1440 H	97
LB21 Left RB21 Right w/600 base	1142 1283 H	99	1450 1639 H	111
WA Wave	884 1047 H	96	1047 1205 H	110

HOW TO BUILD YOUR TABLE MODEL NUMBER:

CV series tear drop with KPWE table top
CV plus edge profile number = **CV-KPWE**
Plus shape: **TD** (Tear Drop), **L** (Left), **R** (Right),
WA (Wave), Plus **H** (Wireway option),
Plus **B21** (Disk Base Option) = **65CV-KPWEWAHB21**

ELECTRICAL OPTIONS

GRM8		Includes: grommet and 1 simplex installed. Grommet will be centered. Size: 2" x 4"	89
PS1		Includes: 4 Simplexes, 15 amp, 2 ea. 6' cords, installed Grommet will be centered Size: 3.5" diameter, Color: Black or Silver	267
PS2		Includes: 2 Simplexes, 15 amp, 6' cord, 2 spaces (customer's own communication), installed Grommet will be centered Color: Black or Silver	232
MIPT2		2 simplexes 6 feet, 15 amp cord 2 Voice/Data ports Color: Black	215
GLB-65		Constructed of die-cast zinc Select 2 Simplexes or one Simplex and one Data 6 feet, 15 amp cord Plated Finish: Satin Nickel Powdercoat Finish Colors: Midnight, Parchment, Metallic Silver	330 239

NOTES:

- Pricing is for complete table.
- Optional standup height of 42" - add \$213 per table
- All prices are Grade 1 Laminate, Grade 3 Powdercoat, Maple species, standard wood finishes, and shipped unassembled.
- Optional species available, call for pricing

- Additional Shapes and top sizes available, call for pricing
- All prices are list, FOB factory

Electrical Options for CV with Wireway series only:

- Specify color or finish if applicable.
- GLB-65: Select 2 Simplexes or one Simplex and one Data

Classic Laminate Series



FEATURES:

- Wilsonart® High-Pressure Laminate Surface
- Black Vinyl "T" Mold Edge
- 30" Table Height
- Full Length Unitized Steel Chassis
- 1.5" Square Folding Legs with Black Epoxy Tufcote™ Finish
- Minimum 6 Each by Size, Color, and Options

OPTIONS:

- Available in Standard Laminate Finish: Montana Walnut (MWN), Wild Cherry (WDC), Black (BL), Blackstar Granite (BGN), Graphite Nebula (GNB), and Gray Glace (GG)
- Table Dolly
- For Additional Wilsonart® Laminates, Call for Pricing, Minimum Order Requirement, and Lead Time
- Custom Sizes by Special Quote Only

Style	Catalog Number	Apprx WT	List Price
Banquet 30W x 72L x 30H	VTD-3072B-LS	51	956
30W x 96L x 30H	VTD-3096B-LS	64	1,021
Training 18W x 60L x 30H	VTD-1860B-LS	45	831
18W x 72L x 30H	VTD-1872B-LS	48	863
18W x 96L x 30H	VTD-1896B-LS	50	895
24W x 60L x 30H	VTD-2460B-LS	53	909
Round 30 diameter, 30H	VTD-30DIB-LS	27	801
36 diameter, 30H	VTD-36DIB-LS	31	879
48 diameter, 30H	VTD-48DIB-LS	42	1,114
60 diameter, 30H	VTD-60DIB-LS	65	1,365
Square 30W x 30L x 30H	VTD-30SQ-LS	30	831
36W x 36L x 30H	VTD-36SQ-LS	37	942
42W x 42L x 30H	VTD-42SQ-LS	45	1,052
48W x 48L x 30H	VTD-48SQ-LS	48	1,130
60W x 60L x 30H	VTD-60SQ-LS	65	1,365
Serpentine 30W x 48L x 30H	VTD-3X8B-LS	49	1,067
30W x 54L x 30H	VTD-4X9B-LS	54	1,146
30W x 60L x 30H	VTD-5X10B-LS	58	1,365

Multi-Purpose Laminate Series



FEATURES:

- Solid Plywood Core
- Wilsonart® High-Pressure Laminate Surface
- Heavy-Duty Steel "Gravity-Lock" Legs with Black Powdercoat
- Black Vinyl "T" Mold Edge
- Minimum 6 Each by Size, Color, and Options

OPTIONS:

- Available in Standard Laminate Finish: Montana Walnut (MWN), Wild Cherry (WDC), Black (BL), Blackstar Granite (BGN), Graphite Nebula (GNB), and Gray Glace (GG)
- Table Dolly
- For Additional Wilsonart® Laminates, Call for Pricing, Minimum Order Requirement, and Lead Time
- Custom Sizes by Special Quote Only

Style	Catalog Number	Apprx WT	List Price
Banquet 30W x 72L x 30H	VTC303072	59	879
30W x 96L x 30H	VTC303096	72	942
Training 18W x 72L x 30H	VTC301872	39	784
18W x 96L x 30H	VTC301896	49	831
24W x 72L x 30H	VTC302472	51	863
24W x 96L x 30H	VTC302496	60	909
Round 60 diameter, 30H	VTC3060RD	68	1,146
24 diameter, 30H	VTC3024RD	17	486
24 diameter, 42H	VTC4224RD	18	526
24 diameter, adj	VTCADJ24RD	19	581
30 diameter, 30H	VTC3030RD	22	503
30 diameter, 42H	VTC4230RD	23	541
30 diameter, adj	VTCADJ30RD	24	596
36 diameter, 30H	VTC3036RD	30	494
36 diameter, 42H	VTC4236RD	31	572
36 diameter, adj	VTCADJ36RD	32	628
Pedestal Square ("Knock-Down") 24W x 24L x 30H	VTC302424SQ	19	503
24W x 24L x 42H	VTC422424SQ	20	541
24W x 24L x adj	VTCADJ2424SQ	21	596
30W x 30L x 30H	VTC303030SQ	25	518
30W x 30L x 42H	VTC423030SQ	27	558
30W x 30L x adj	VTCADJ3030SQ	28	612
36W x 36L x 30H	VTC303636SQ	35	550
36W x 36L x 42H	VTC423636SQ	36	588
36W x 36L x adj	VTCADJ3636SQ	37	643

Multi-Purpose Plywood Series



FEATURES:

- 30" Standard Table Height .75" Plywood top
- UV polyurethane protective finish on both sides
- Steel legs
- Hardwood table runners
- 100% bolt thru construction
- Black vinyl edge

OPTIONS:

- Table Dolly
 - \$447 Dolly for 48" x 60"R
 - \$483 Dolly for 66" to 72"R
 - \$543 Dolly for 6' Banquet Table

Style	Catalog Number	Apprx WT	List Price
Rectangular 24 x 60	PLYWSHFLD-2460	46	312
24 x 72	PLYWSHFLD-2472	51	374
30 x 72	PLYWSHFLD-3072	59	359
36 x 60	PLYWSHFLD-3660	70	409
36 x 72	PLYWSHFLD-3672	64	438
Round 60 diameter	PLYWSHFLD-60RD	68	463
72 diameter	PLYWSHFLD-72RD	80	617

Classic Plywood Series



FEATURES:

- 30" Table Height
- 5/8" Plywood Top
- Ultraviolet Light Cured Polyurethane Coating on Plywood Top
- Walnut Sealer Stain Finish
- Full Length Unitized Steel Chassis
- 1.5" Square Folding Legs with Black Epoxy Tufcote™ Finish
- C-Channel Wrapped Aluminum Edge Molding
- Minimum 6 Each by Size, Color, and Options

Style	Catalog Number	Apprx WT	List Price
Banquet 30W x 72L x 30H	VTD-3072A-PL	50	628
30W x 96L x 30H	VTD-3096A-PL	63	659
36W x 72L x 30H	VTD-3672A-PL	58	770
36W x 96L x 30H	VTD-3696A-PL	64	816
Training 18W x 72L x 30H	VTD-1872A-PL	47	565
18W x 96L x 30H	VTD-1896A-PL	49	581
24W x 72L x 30H	VTD-2472A-PL	55	596
24W x 96L x 30H	VTD-2496A-PL	57	643
Round 30 diameter, 30H	VTD-30DIA-PL	26	486
36 diameter, 30H	VTD-36DIA-PL	30	533
48 diameter, 30H	VTD-48DIA-PL	41	737
60 diameter, 30H	VTD-60DIA-PL	64	801
66 diameter, 30H	VTD-66DIA-PL	69	1,035
72 diameter, 30H	VTD-72DIA-PL	75	1,052
Square 30W x 30L x 30H	VTD-3030A-PL	29	581
36W x 36L x 30H	VTD-3636A-PL	36	706
42W x 42L x 30H	VTD-4242A-PL	44	784
48W x 48L x 30H	VTD-4848A-PL	47	895
60W x 60L x 30H	VTD-6060A-PL	72	1,035
72W x 72L x 30H	VTD-7272A-PL	88	1,146
Half-Round 30W x 60L x 30H	VTD-60SCA-PL	43	723
36W x 72L x 30H	VTD-72SCA-PL	50	737
Quarter-Round 30W x 30L x 30H	VTD-30QTA-PL	29	550
36W x 36L x 30H	VTD-36QTA-PL	32	581
Serpentine 30W x 48L x 30H	VTD-3X8A-PL	48	675
30W x 54L x 30H	VTD-4X9A-PL	53	801
30W x 60L x 30H	VTD-5X10A-PL	57	956
30W x 72L x 30H	VTD-7X12A-PL	71	1,114
30W x 90L x 30H	VTD-10X15A-PL	83	1,287

Classic Padded Top Series



FEATURES:

- 30" Standard Table Height
- 5/8" Plywood Top
- White Padded Vinyl Top
- Full Length Unitized Steel Chassis
- 1.5" Square Folding Legs with Black Epoxy Tufcote™ Finish
- C-Channel Wrapped Aluminum Edge Molding
- Minimum 6 Each by Size, Color, and Options

Style	Catalog Number	Apprx WT	List Price
Banquet 30W x 72L x 30H	VTD-3072A-PAD	50	801
30W x 96L x 30H	VTD-3096A-PAD	63	831
36W x 72L x 30H	VTD-3672A-PAD	58	942
36W x 96L x 30H	VTD-3696A-PAD	64	989
Training 18W x 72L x 30H	VTD-1872A-PAD	47	706
18W x 96L x 30H	VTD-1896A-PAD	49	723
24W x 72L x 30H	VTD-2472A-PAD	55	737
24W x 96L x 30H	VTD-2496A-PAD	57	784
Round 30 diameter, 30H	VTD-30DIA-PAD	26	581
36 diameter, 30H	VTD-36DIA-PAD	30	628
48 diameter, 30H	VTD-48DIA-PAD	41	879
60 diameter, 30H	VTD-60DIA-PAD	64	989
66 diameter, 30H	VTD-66DIA-PAD	69	1,302
72 diameter, 30H	VTD-72DIA-PAD	75	1,318
Square 30W x 30L x 30H	VTD-3030A-PAD	29	675
36W x 36L x 30H	VTD-3636A-PAD	36	801
42W x 42L x 30H	VTD-4242A-PAD	44	927
48W x 48L x 30H	VTD-4848A-PAD	47	1,035
60W x 60L x 30H	VTD-6060A-PAD	72	1,224
72W x 72L x 30H	VTD-7272A-PAD	88	1,412
Half-Round 30W x 60L x 30H	VTD-60SCA-PAD	43	895
36W x 72L x 30H	VTD-72SCA-PAD	50	909
Quarter-Round 30W x 30L x 30H	VTD-30QTA-PAD	29	643
36W x 36L x 30H	VTD-36QTA-PAD	32	675
Serpentine 30W x 48L x 30H	VTD-3X8A-PAD	48	848
30W x 54L x 30H	VTD-4X9A-PAD	53	974
30W x 60L x 30H	VTD-5X10A-PAD	57	1,130
30W x 72L x 30H	VTD-7X12A-PAD	71	1,287
30W x 90L x 30H	VTD-10X15A-PAD	83	1,460