

Tamil Indic Input 2 – User Guide

Contents

WHAT IS TAMIL INDIC INPUT 2?	2
SYSTEM REQUIREMENTS.....	2
TO INSTALL TAMIL INDIC INPUT 2	2
TO USE TAMIL INDIC INPUT 2	3
SUPPORTED KEYBOARDS	4
TAMIL TRANSLITERATION.....	4
<i>Keyboard Rules</i>	4
TAMIL INSCRIPT.....	5
ANJAL TRANSLITERATION.....	6
<i>Keyboard Rules</i>	6
ROMANISED TRANSLITERATION	7
<i>Keyboard Rules</i>	7
TAMIL TYPEWRITER	8
TAMIL 99	9
TOOL SETTING OPTIONS	10
ON-THE-FLY HELP.....	10
SHOW KEYBOARD	11
SWITCH TO ENGLISH/TAMIL	11
HELP	12
TROUBLESHOOTING	12
TO UNINSTALL TAMIL INDIC INPUT 2	13

What is Tamil Indic Input 2?

Tamil Indic Input 2 provides a very convenient way of entering text in Tamil Language using the English QWERTY keyboard in any editing application (Office Application/WordPad /Notepad) that supports Text Services. Tamil Indic Input 2 tool will be packaged as a setup and running the setup will invoke the services. The tool supports all popular keyboard layouts.

System Requirements

Windows Vista

Windows 7

*Tool is compatible with equivalent 64-bit Operating Systems mentioned above.

To Install Tamil Indic Input 2

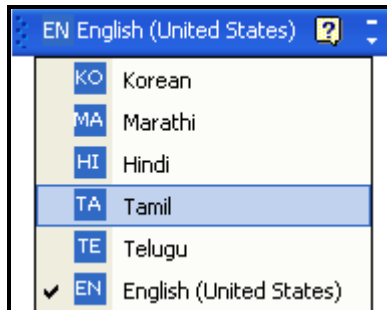
Installation of the Tamil Indic Input 2 is a very easy process that takes less than two minute to complete.

Run or double click **Tamil Indic Input 2 Setup**. The setup wizard will guide you through the installation process. Once the installation process is complete, **Tamil Indic Input 2 has been successfully installed** will be displayed.

Note: On Windows Vista and Windows 7, if your user login does not have administrative privileges or is not included in the user group of administrators right click the "Setup.exe" icon and select "Run as Administrator".

To Use Tamil Indic Input 2

1. Start any Office application, including WordPad or Notepad.
2. Click the Language Indicator located in the System Tray on the right side of the Windows taskbar or on Language bar as shown below and select **TA-Tamil**.



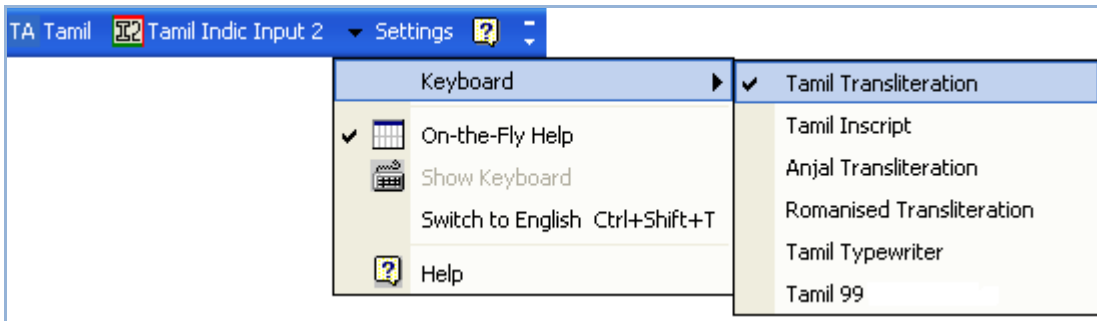
3. Select **Tamil Indic Input 2** from the shortcut menu that appears. The PC is now ready to start typing in Tamil.



Note: If you are unable to view Language bar on your PC [Click Here](#).

Supported Keyboards

Tamil Indic Input 2 supports various types of Keyboards. Click **Settings** Icon and select **Keyboard**. Choose keyboard layout of your choice from list of available keyboards.



Tamil Transliteration

User can type his message in Roman using the Standard English keyboard, which is transliterated on-the-fly to Tamil. It works on the logic of phonetics and is most effective when user write the word the way it is spoken.

Keyboard Rules

Vyanjan (Consonants)									
க	ka, kha, ga, gha, qa	ங்	Nga	ச	cha, chha, ca, sa	ஜ	ja, jha	ஞ	Nja
ட	Ta, Da, ta, da	ண	Na	த	Tha, Dha, tha, dha	ந்	na	ன	n_a
ப	pa, pha, ba, bha, fa	ம	ma	ய	ya	ர	ra	ற	Ra
ல	la	ள	La	ழ	zha, za	வ	va, wa	ஷ	sha
ஸ	Sa	ஹ	ha	க்ஷ	Xa, xa, kSha	ஸ்ரீ	sree		

Swar (Vowels)									
அ	a	ஆ	aa	இ	i	ஈ	ee,ii,I	உ	u
ஊ	oo,uu,U	எ	e	ஏ	E	ஐ	ai,ei	ஓ	o
ஔ	O	ஔ	au,ou	அஃ	aH				

Examples	
Input	Output
aachiyaa	ஆசியா
vilaiyaachi	விலைவாசி
auvai	ஔவை

Matras

ா	aa	ி	i	ீ	ee,ii,l	ு	u	ூ	oo,uu,U	ீ	R
ெ	e	ே	E	ை	ai,ei	ொ	o	ோ	O	ெள	au,ou

Examples

Input	Output
paaTTu	பாட்டு
kOvai	கோவை
echu	ஏசு
viiNai	வீணை

Visarga

ஃ	H
---	---

Examples

Input	Output
aHdhu	அஃது
paHkruli	பஃறுளி

Conjuncts

ஸ்ரீ	sree	க்ஷ	kSha
------	------	-----	------

Examples

Input	Output
lakShmi	லக்ஷ்மி
sreemaan	ஸ்ரீமான்

Tamil Inscript

Special Combinations	
consoA + halant(d) + consoB = conjunct	க + ஂ + ற = க்ற
consoA + halant(d) + Ctrl+Shift+1 + consoB = disjoint conjunct	க + ஂ + CtrlShift 1+ ற = க்ஷ
consoA + halant(d) + Ctrl+Shift+2 + consoB = disjoint conjunct	க + ஂ + CtrlShift 2 + ற = க்ஷ
To type Roman Numerals (Numbers), use the Numpad Keys of the Keyboard with Caps Lock Key ON.	1, 2, 3,...9, 0.
To type Lingual Numerals (Numbers), use the Numpad Keys of the Keyboard with Caps Lock Key OFF.	க உ ன ச ற கூ எ அ கூ

Anjal Transliteration

Keyboard Rules

Vyanjan (Consonants)											
க	ka ,kha, ga, gha, ca	ங	Nga, nga	ச	cha, chha, sa	ஜ	ja, jha	ஞ	Nja, nja	ட	Ta, ta, da, Da
த	Tha, tha, dha, Dha	ண	Na	ந	n-a,wa	ன	na	ப	pa, pha, ba, bha, fa	ம	ma
ய	ya	ர	ra	ற	Ra	ல	la	ள	La	ழ	zha, za
வ	va	ஷ	sha, Sha	ஸ	Sa	ஹ	ha	க்ஷ	Xa, xa, kSha		

Swar (Vowels)							
அ	a	ஆ	aa	இ	i	ஈ	ii, I
உ	u	ஊ	uu, U	எ	e	ஏ	ee, E
ஐ	ai, ei	ஓ	o	ஔ	oo, O	ஔள	au, ou

Matras							
ா	aa	ி	i	ீ	ii, I	ு	u
ௌ	uu, U	ெ	e	ே	ee, E	ை	ai, ei
ொ	o	ோ	oo, O	ௌ	au, ou		

Conjuncts	
kSha, xa, Xa	க்ஷ
sr	ஸ்ரீ

Gy	ஜஞ
----	----

Visarga	
ஃ	q/H
அஃ	aH

Special Combinations	
To type Roman Numerals (Numbers), use the Numpad Keys of the Keyboard with Caps Lock Key ON.	1, 2, 3,...9, 0.
To type Lingual Numerals (Numbers), use the Numpad Keys of the Keyboard with Caps Lock Key OFF.	க உ ந ச ற கூ எ அ கூ
'n' typed at the beginning of a word creates ந், else it creates ன்.	n + a + p + i = ந்பி p + a + n + i = பனி

Romanised Transliteration

Keyboard Rules

Vyanjan (Consonants)											
க	ka ,kha, ga, gha, ca	ங	Nga, nga	ச	cha, chha	ஜ	ja, jha	ஞ	Nja, nja	ட	Ta, Tha, Da, Dha
த	ta, tha, da, dha	ண	Na	ந	n-a,wa	ன	na	ப	pa, pha, ba, bha, fa	ம	ma
ய	ya	ர	ra	ற	Ra	ல	la	ள	La	ழ	zha, za
வ	va	ஷ	sha, Sha	ஸ	Sa, sa	ஹ	ha	க்ஷ	xa, Xa, kSha		

Swar (Vowels)							
அ	a	ஆ	aa	இ	i	ஈ	ii, I
உ	u	ஊ	uu, U	எ	e	ஏ	ee, E
ஐ	ai, ei	ஓ	o	ஔ	O, oo	ஔள்	au, ou

Matras							
ா	aa	ி	i	ீ	ii, I	ு	u
ை	uu, U	ெ	e	ே	ee, E	ை	ai, ei
ொ	o	ோ	O, oo	ௌ	au, ou		

Conjuncts	
kSha, xa, Xa	கஷ
sr	ஸ்ரீ
Gy	ஜீ

Visarga	
ஃ	Q/H
அஃ	aH

Special Combinations	
To type Roman Numerals (Numbers), use the Numpad Keys of the Keyboard with Caps Lock Key ON.	1,2,3,...9,0.
To type Lingual Numerals (Numbers), use the Numpad Keys of the Keyboard with Caps Lock Key OFF.	க உ ந ச ற கூ எ அ க
'n' typed at the beginning of a word creates ந, else it creates ன.	n + a + p + i = நபி p + a + n + i = பனி

Tamil Typewriter



Special Combinations	
Halant is typed before a consonant, to obtain half consonants.	஁ + க = க்
'i' matra is typed before a consonant, to obtain 'i' matra form of the consonant.	ி + க = கி
'ee' matra is typed before a consonant, to obtain 'ee' matra form of the consonant.	ிீ + ம = மீ
'oo' matra is typed before pa, va, Nga, Nja, ya consonants to obtain their 'oo' matra combinations. For all other consonants, 'oo' matra is following the consonant.	று + ப = பூ க + று = கூ
'u' matra is typed before pa, va, Nga, Nja, ya consonants to obtain their 'u' matra combinations. For all other consonants, 'u' matra is following the consonant.	று + ப = பு க + று = கு
'oo' matra combinations for ட, ற, ள, ட, ழ consonants can also be obtained by typing 'oo' matra followed by respective 'u' matra combinations.	று + டு = டூ று + ரு = ரூ று + ளு = ளூ று + மு = மூ று + ழு = ழூ
'oo' matra combinations for ண, ற, ற, ல, ன consonants can also be obtained by typing respective 'u' matra combinations followed by 'oo' matra.	று + று = றூ று + று = றூ று + று = றூ று + று = றூ
To type Roman Numerals (Numbers), use the Numpad Keys of the Keyboard with Caps Lock Key ON.	1, 2, 3, ..., 9, 0.
To type Lingual Numerals (Numbers), use the Numpad Keys of the Keyboard with Caps Lock Key OFF.	க உ ன ச று கூ ஏ அ கை

Tamil 99



Special Combinations	
To type Roman Numerals (Numbers), use the Numpad Keys of the Keyboard with Caps Lock Key ON.	1, 2, 3,...9, 0.
To type Lingual Numerals (Numbers), use the Numpad Keys of the Keyboard with Caps Lock Key OFF.	க உ ந ச ற கூ எ அ கூ
1) Caret '^' followed by 'c' creates the copyright symbol '©'. b) Caret '^' followed by '7' or '8' creates apostrophe '\'. c) Caret '^' followed by '9' created double quotes '\"'.	^ + c = © ^ + 7 = ^ + 8 = ' ^ + 9 = ^ + 0 = "
Consonant followed by same consonant makes first consonant half.	k + k = க + க = க்
A soft consonant followed by the corresponding hard consonant symbol, makes first consonant half.	ங + க = க் ஞ + ச = க் ண + ட = ண் ந + த = த் ம + ப = ம் ன + ற = ன்

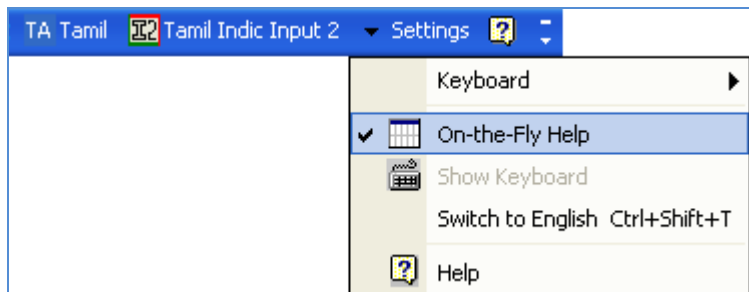
Tool Setting Options

On-the-fly Help

Tool provides the simplest way to type text by using on-the-fly Help. As the user starts typing using any transliteration keyboard, he can see the respective letters in selected Indian Language with various matra combinations.

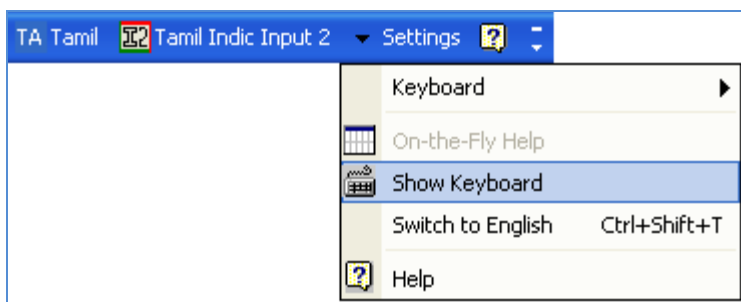
To activate this feature select **On-the-Fly Help** from **Settings** Menu.

p: ப ph: ப																	
p	pa	paa	pi	pil	pu	puu	pe	pE	pai	po	pO	pau	pH	pee	pI	poo	pra
ப	ப	பா	பி	பீ	பு	பூ	பெ	பே	பை	பொ	போ	பெள	பஃ	பீ	பீ	பூ	ப்ர



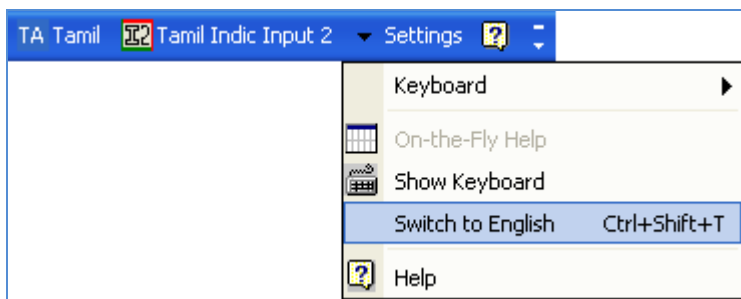
Show Keyboard

To view any keyboard (except Phonetic) select **Show Keyboard** option from **Settings** Menu

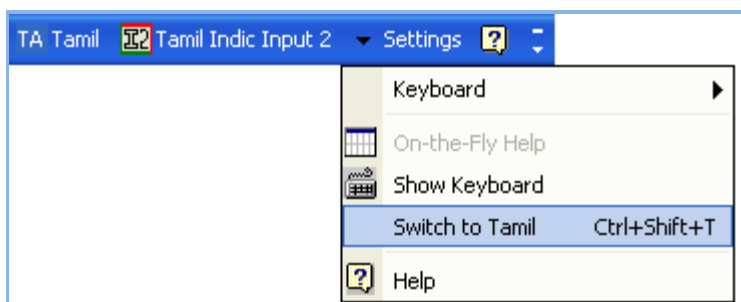


Switch to English/Tamil

To switch to English Language, select **Switch to English** option from **Settings** Menu or use shortcut key Ctrl+Shift+T.

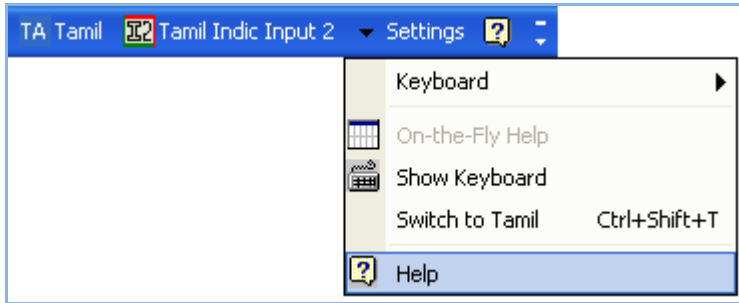


To switch to Tamil Language again, select **Switch to Tamil** option from **Settings** Menu or use shortcut key Ctrl+Shift+T.



Help

To view help on Tamil Indic Input 2 tool, select **Help** from **Settings** Menu.



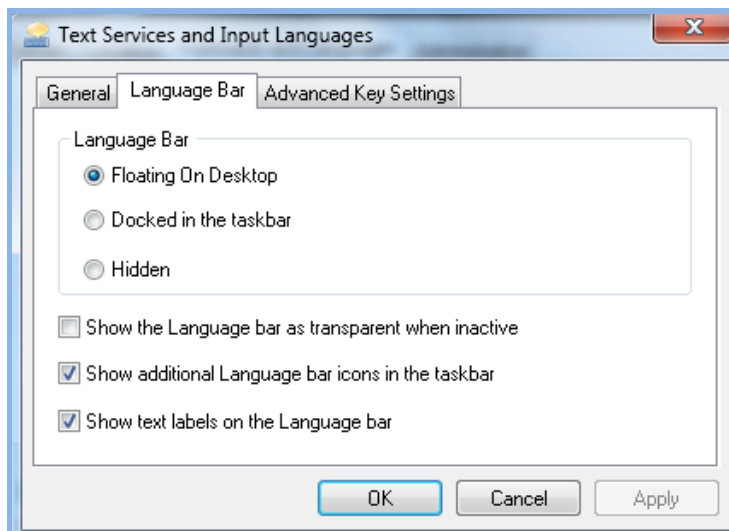
Troubleshooting

1. How can I make Language bar visible on my PC?

Right-click your Desktop taskbar, and point to **Toolbars**. See is **Language bar** selected, if not click on it to select. If Language bar is no longer listed in the toolbar menu try below steps:

VISTA/WINDOWS 7

- Go to **Control Panel > Regional and Language Options > Keyboards and Languages (tab) > Change Keyboards > Language Bar**
- Select radio button **Floating on Desktop** or **Docked in the taskbar**.
- Click **OK**.

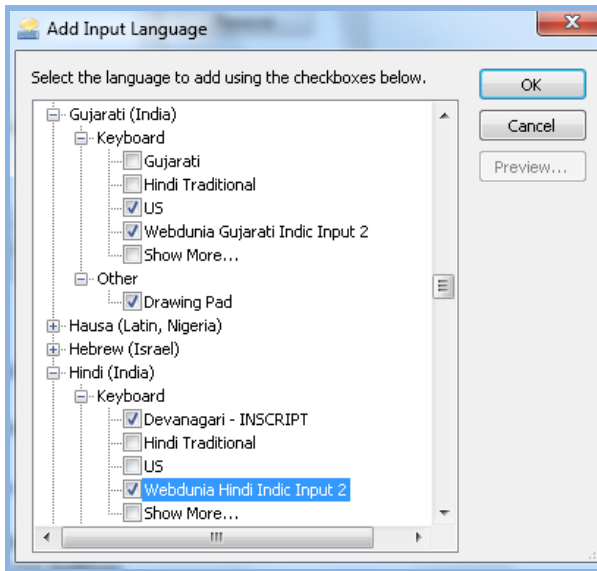


2. How can I add Tamil Indic Input 2 on my Language bar?

VISTA/WINDOWS 7

- Go to **Control Panel > Regional and Language Options > Keyboards and Languages (tab) > Change Keyboards > General**.

- Click **Add** button, Select the Language (Tamil) and under Keyboard section check the box titled **Tamil Indic Input 2**.
- Click **OK**.



3. I do not want Tamil Indic Input 2 as the default input method for my PC. What can be done?

VISTA/WINDOWS 7

- Go to **Control Panel > Regional and Language Options > Keyboards and Languages (tab) > Change Keyboards > General**

Check both:

- ✓ You have not selected Tamil as your **Default Input Language**.
- ✓ You have not selected Tamil Indic Input 2 as an input method in Language bar.

To Uninstall Tamil Indic Input 2

Follow the steps below to uninstall the tool.

1. Open **Control Panel** → **Add/Remove Programs** to remove the program(s).
2. Select **Tamil Indic Input 2** and click **Remove** button.
3. You will be prompted by a confirmatory message. Select **Yes** to remove the tool completely.

Note: It is recommended to close all running applications before uninstalling the Tamil Indic Input 2 Tool.